

4-2016

# Statewide Collaboration to Improve ASD Initiatives in Montana

Martin E. Blair

*University of Montana, Missoula*

Ann N. Garfinkle

*University of Montana - Missoula*

University of Montana Rural Institute

ScholarWorks-Reports@mso.umt.edu

Follow this and additional works at: [http://scholarworks.umt.edu/ruralinst\\_early\\_childhood](http://scholarworks.umt.edu/ruralinst_early_childhood)



Part of the [Developmental Psychology Commons](#)

---

## Recommended Citation

Blair, M. & Garfinkle, A. (April 2016). Statewide Collaboration to Improve ASD Initiatives in Montana. Poster presented at the Association of Maternal Child Health Programs Annual Meeting, Washington, D.C.

This Poster is brought to you for free and open access by the Rural Institute for Inclusive Communities at ScholarWorks at University of Montana. It has been accepted for inclusion in Early Childhood by an authorized administrator of ScholarWorks at University of Montana. For more information, please contact [scholarworks@mail.lib.umt.edu](mailto:scholarworks@mail.lib.umt.edu).

# Statewide Collaboration to Improve ASD Initiatives in Montana

- Family Outreach (Helena) uses “Milestone” booklets as a discussion guide for each home visit.
- The Part C agency renamed itself “Montana Milestones Part C Intervention” to capitalize on the LTSAE milestones concept.
- UCEDD and Ambassador meet bimonthly to plan and implement training and develop resources.
- Social media and Facebook are a great way to share information and build community.
- Churches, bowling alleys and bars are good points of contact in rural and remote areas.
- Local newsletters and Chamber of Commerce/community websites are good avenues for building resource awareness.



**The Montana Autism Center provides practical assistance, demonstrates proven techniques, and trains direct service staff.**

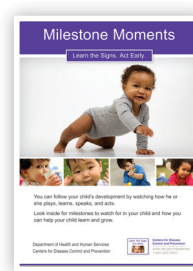
## Fast Facts:

- In 8 years, preschool-age referrals are up 100%. For school age, referrals are up 150%, mostly in western MT.
- One Part C provider currently serves 125 families, 38% screen positive for ASD.
- First-ever collaborative State ASD plan developed in 2015. Partnership grew from 22 to 56 in the 20 month process.
- “Youth Engagement Through Intervention” for school-age children grew from 8 to 17 children in one year. “MOSSAIC” grew from 4 to 7 young adults.
- The largest youth/adult provider in central Montana has 100 open Direct Service Provider positions.
- Training to 38 “very satisfied” Early Head Start providers across Montana. Six of 10 Early Head Start programs were represented.
- UC Davis and a Montana team to implement the Early Start Denver Model project. Research sites include several Part C providers.
- M-CHAT adoption (at entrance and ~30 months) by half of Part C providers.



## MT Autism Center

- 2,316 unique visitors with 9,082 page views in 9 months (no advertising).
- The center is about “function,” not “place.”
- Center resources available “on demand.”



## “Act Early” Resources

- CDC LTSAE customized brochure (trifold) 4,600.
- CDC LTSAE customized booklet (48 page) 800.

