

University of Montana

ScholarWorks at University of Montana

Lady Griz Basketball Programs, 1979-1988

Intercollegiate Athletics

9-1-1979

Lady Griz Basketball Program, 1979-1980

University of Montana (Missoula, Mont. : 1965-1994). Athletics Department

Follow this and additional works at: https://scholarworks.umt.edu/ladygrizbasketball_programs

Let us know how access to this document benefits you.

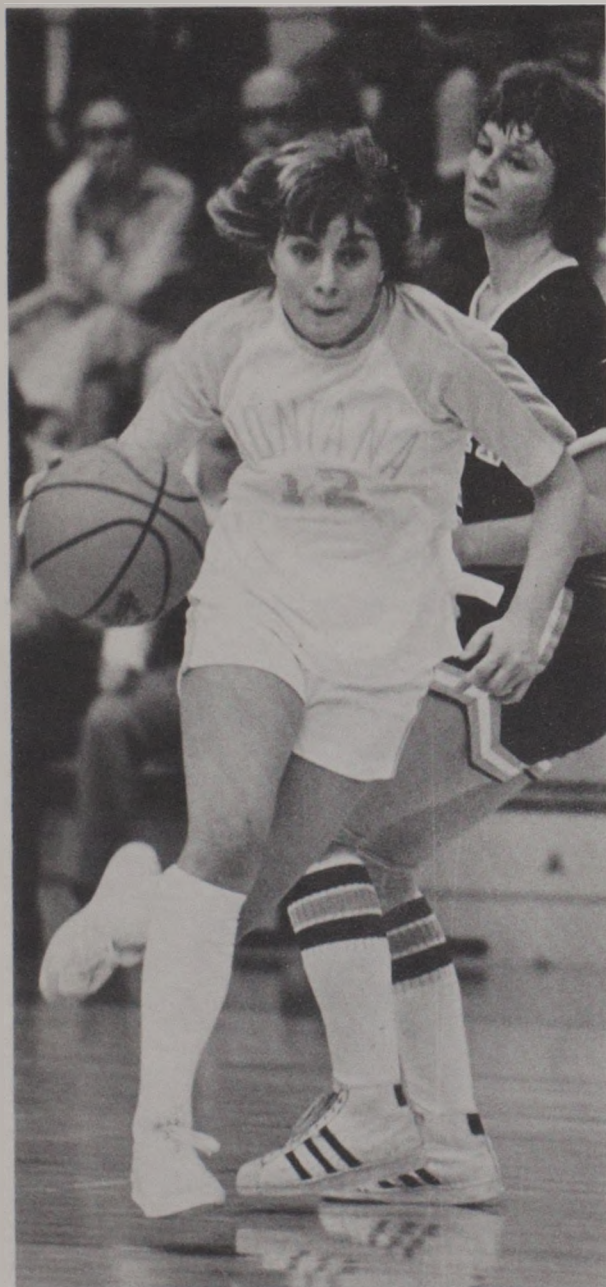
Recommended Citation

University of Montana (Missoula, Mont. : 1965-1994). Athletics Department, "Lady Griz Basketball Program, 1979-1980" (1979). *Lady Griz Basketball Programs, 1979-1988*. 1.

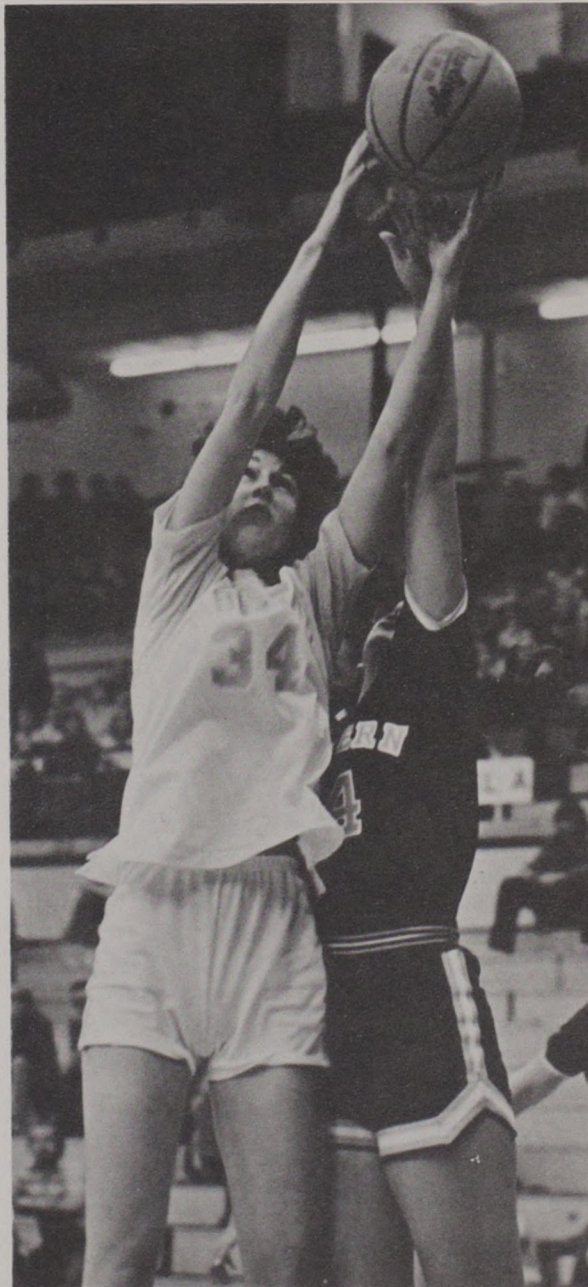
https://scholarworks.umt.edu/ladygrizbasketball_programs/1

This Program is brought to you for free and open access by the Intercollegiate Athletics at ScholarWorks at University of Montana. It has been accepted for inclusion in Lady Griz Basketball Programs, 1979-1988 by an authorized administrator of ScholarWorks at University of Montana. For more information, please contact scholarworks@mso.umt.edu.

University of Montana 1979-80



Co-Captain Annette Whitaker



1978-79 High Scorer Linda Smith

WOMEN'S BASKETBALL

Player Profiles

LINDI ASH . . . 5-5 . . . senior . . . guard . . . Hamilton, Mt. High School . . . all-Conference 1975 and 1976 . . . UM's best free throw shooter last season . . .

SHERI CAMERON . . . 5-6 . . . senior . . . guard . . . Lathrop High, Fairbanks, AL . . . all-State 1975 and 1976 . . . captained state champions in 1976 . . . good ballhandler . . .

LINDA DEDEN SMITH . . . 6-1 . . . senior . . . center-forward . . . Sentinel High, Missoula, MT . . . all-Stater . . . Grizzlies' leading scorer and rebounder in 1978-79 . . .

CANDIE STEVENS . . . 5-11 . . . senior . . . forward-center . . . Great Falls, Mt. High School . . . excellent rebounder . . . led team in win over Washington State with 21 points . . .

SANDY SELVIG . . . 6-0 . . . junior . . . center-forward . . . Outlook, Mt. High School . . . all-State 1975-77 . . . second in 78-79 in rebounding and scoring . . .

JILL GREENFIELD . . . 6-1 . . . junior . . . forward-center . . . Hanford High, Richland, WA . . . averaged 17 points a game at Wenatchee Valley College last season . . . all-League . . .

ANNETTE WHITAKER . . . 5-4 . . . junior . . . guard . . . Cashmere High, WA . . . also from Wenatchee Valley . . . captain and all-Tournament last year . . . very quick and breaks the press well . . .

ALISON ROBB . . . 5-8 . . . junior . . . forward . . . Park High, Livingston, MT . . . all-Conference . . . defense and rebounding strength . . . led UM in scoring against Portland State . . .

LISA FISHER . . . 5-10 . . . junior . . . forward . . . Upland, Ca. High School . . . 4 sport letter winner . . . good rebounder . . . high scorer against Flathead Valley C.C. last year . . .

BARB JOHANNSEN . . . 5-4 . . . junior . . . guard . . . North Toole County High, Sunburst, MT . . . all-Conference 1975-77 . . . all-State in 1976 . . .

PEG HAVLOVICK . . . 5-7 . . . sophomore . . . guard . . . Polson, Mt. High School . . . all-Conference 1976-78 . . . all-State in 1978 . . . best shooting percentage (.525) on the '79 Grizzlies . . .

JULI ECKMANN . . . 5-10 . . . freshman . . . guard . . . Magic City High, Minot, N.D. . . . 1979 State Female Athlete of the Year . . . Converse all-American . . . all-State . . . good skills . . .

JANET RUETTEN . . . 5-9 . . . freshman . . . guard . . . Patrick Henry High, San Diego, CA . . . Eastern League player of the year . . . good shooter . . . goes to the basket well . . .

CATHY ST. JOHN . . . 5-8 . . . freshman . . . guard . . . Opheim, Mt. High School . . . MVP 1977-79 . . . all-Conference 1977-79 . . . excellent in anticipating ball movement . . .

SHARI KAPPEL . . . 5-6 . . . freshman . . . guard . . . Billings West High School . . . all-State in 1979 . . . all-Conference 1977-79 . . . adds the quickness needed for the fast break . . .

1979-80 Grizzly Women's Roster

No.	Player	Pos.	Ht.	Yr.	Hometown
11	Candie Stevens**	C-F	5-11	Sr.	Great Falls, MT
12	Annette Whitaker	G	5-4	Jr.	Cashmere, WA
14	Lindi Ash*	G	5-5	Sr.	Hamilton, MT
15	Barb Johannsen*	G	5-4	Jr.	Sunburst, MT
21	Alison Robb*	F	5-8	Jr.	Livingston, MT
22	Cathy St. John	G	5-8	Fr.	Opheim, MT
23	Juli Eckmann	G	5-10	Fr.	Minot, ND
24	Sheri Cameron**	G	5-6	Sr.	Juneau, AK
25	Sandy Selvig*	C-F	6-0	Jr.	Outlook, MT
31	Lisa Fisher*	F	5-10	Jr.	Upland, CA
32	Shari Kappel	G	5-6	Fr.	Billings, MT
33	Janet Ruetten	G	5-10	Fr.	San Diego, CA
34	Linda Smith**	C-F	6-1	Sr.	Missoula, MT
35	Jill Greenfield	C-F	6-2	Jr.	Richland, WA
41	Peg Havlovick*	G	5-8	So.	Polson, MT

*Letters Earned

Head Coach: Robin Selvig

Assistant Coach: Sara Novak

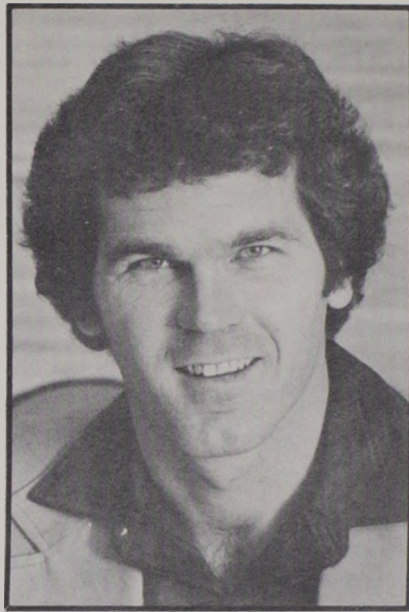
Trainer: Pat Archer

Manager: Leslie Ness



1979-80 Grizzly Women's Basketball Team

Left to right: Assistant coach Sara Novak, Sue Habbe, Barb Johannsen, Lindi Ash, Sheri Cameron, Peg Havlovick, Lisa Fisher, Candie Stevens, Linda Smith, Jill Greenfield, Sandy Selvig, Juli Eckmann, Janet Ruetten, Alison Robb, Cathy St. John, Annette Whitaker, Shari Kappel, Leslie Ness, manager; Head coach Robin Selvig.



Robin Selvig

Robin Selvig, in his second year as head coach, guided the Grizzlies to a second place finish in their division and to their best overall record in the team's young history last season.

Selvig designed the defense that led the Northwest Women's Basketball League in fewest points allowed per game (57.2).

He was the head coach of the girl's basketball team at Plentywood High School from 1975 to 1978.

Selvig graduated from the University of Montana in 1974, playing four years for the Grizzlies. As a senior he was a second-team All-Big Sky Conference selection and won the university's top athletic award, the Grizzly Cup. He was named the best defensive player on the UM team that year.



Sara Novak

Sara Novak joins the women's basketball team this year as an assistant varsity coach and head coach of the junior varsity program.

She received her B.S. degree from Baylor University in 1978. During the 1977-78 season she was an assistant coach to Olga Fallon who headed the Baylor women's basketball program for 16 years.

Sarah coached high school basketball and track at Park City, Montana in 1978-79. In 1977 she qualified for the A.I.A.W. National Track Championship in the javelin and played on the Baylor basketball team which placed fifth in the national tournament that year.



**First National
Montana Bank of Missoula**

Front and Higgins, Missoula, Montana 59801



**First Bank-
Western Montana Missoula**

248 North Higgins • 721-2020

Member F.D.I.C.

**Working together,
getting things done.**



**First Bank
Southside Missoula**

Member First Bank System

Member F.D.I.C.

Working together, getting things done.