

University of Montana

ScholarWorks at University of Montana

Lady Griz Basketball Media Guides, 1978-2009

Intercollegiate Athletics

9-1-1982

Lady Griz Basketball Media Guide, 1982-1983

University of Montana (Missoula, Mont. : 1965-1994). Athletics Department

Follow this and additional works at: https://scholarworks.umt.edu/ladygrizbasketball_mediaguides

Let us know how access to this document benefits you.

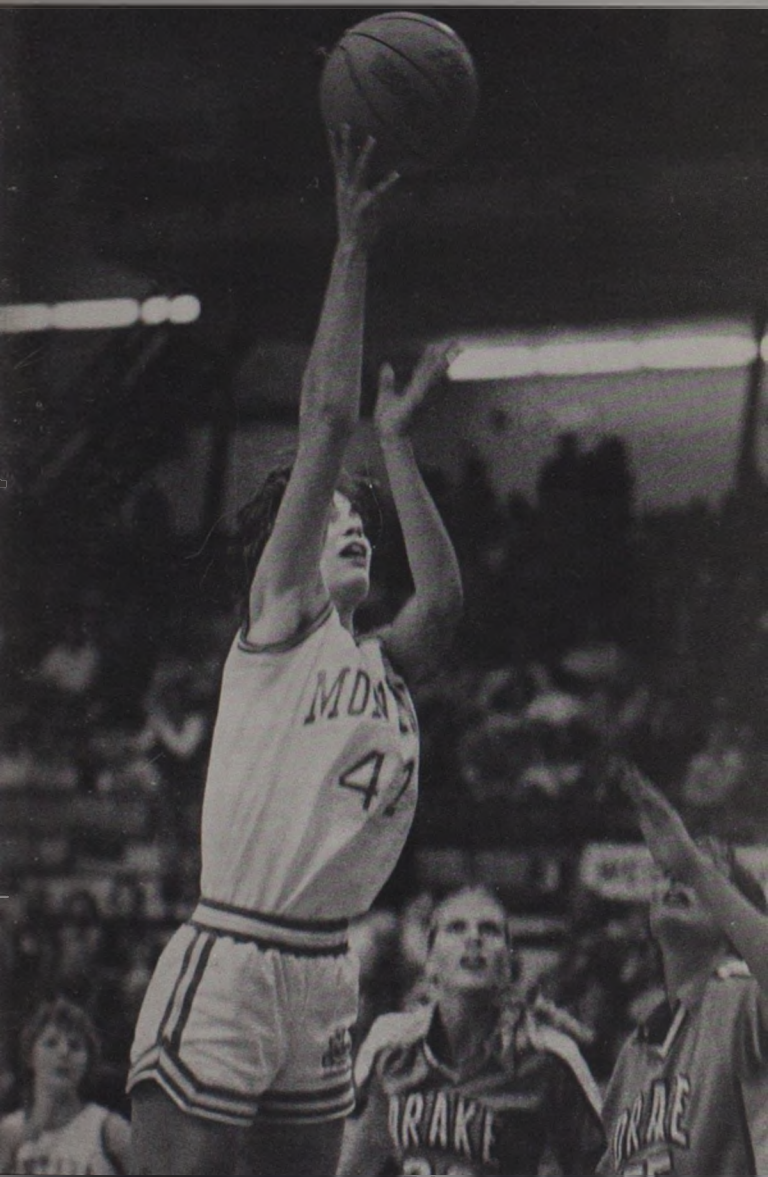
Recommended Citation

University of Montana (Missoula, Mont. : 1965-1994). Athletics Department, "Lady Griz Basketball Media Guide, 1982-1983" (1982). *Lady Griz Basketball Media Guides, 1978-2009*. 5.

https://scholarworks.umt.edu/ladygrizbasketball_mediaguides/5

This Guide is brought to you for free and open access by the Intercollegiate Athletics at ScholarWorks at University of Montana. It has been accepted for inclusion in Lady Griz Basketball Media Guides, 1978-2009 by an authorized administrator of ScholarWorks at University of Montana. For more information, please contact scholarworks@mso.umt.edu.

MONTANA



**Women's Basketball
1982-83 Media Guide**

University of Montana

Women's Basketball Quick Facts

Location	Missoula, Montana
Chartered.....	February 17, 1893
Enrollment	8,800
Nickname	Lady Griz
Colors.....	Copper, Silver & Gold
Home Court	Dahlberg Arena (9,329)
Conference	Mountain West
National Affiliation	NCAA
President	Dr. Neil Bucklew
Athletic Director	Harley Lewis
Associate Athletic Director	Barbara Hollmann
Women's Basketball Sports Info. Dir.....	Linda Reaves (406) 243-6899 (work) (406) 728-6365 (home)
Athletic Trainer	Pat Archer
Head Coach	Robin Selvig
Coach's Record at Montana.....	76-36 (four years)
Coach's Collegiate Record	76-36 (four years)
Assistant Coach	Annette Whitaker
Basketball Office Phone	(406) 243-5334
1981-82 Overall Record	22-5
1981-82 Conference Record (NWBL-AIAW Division)	12-0
National Finish	First Round AIAW
1981-82 Offensive Average	66.7 points
1981-82 Defensive Average	53.5 points (led the nation)
Returning Letterwinners	10
Returning Starters	6
Mailing Address:	
	Department of Intercollegiate Athletics
	University of Montana
	Adams Field House
	Missoula, Montana 59812

On the Cover: Junior Center Doris Deden. On the opposite page:
Sophomore Forward-Center Anita Novak.

This brochure was written and edited by UM Assistant Sports Information Director Linda Reaves. Photography by Geoffrey Sutton.

1982-83

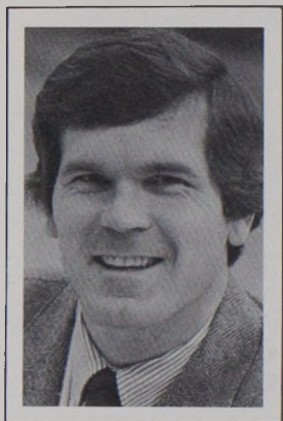
Lady Griz Basketball



Table of Contents

Coaches	2
Outlook	3-5
Returnees	7-11
Newcomers	13
Roster	14-15
1981-82 Statistics	16-17
1981-82 Results	18-19
Record Book	20
Opponents	22-26
Media Outlets	28
University of Montana	Inside Back Cover

Head Coach Robin Selvig



Robin Selvig
Head Coach

Selvig is in his fifth year as head coach of the University of Montana's women's basketball team. He has compiled an impressive 76-36 record in that time and his winning percentage (.679) is the best of any UM basketball coach (men's or women's).

Last season's record of 22-5 is the best in the program's history and Selvig was selected as the NWBL (Northwest Women's Basketball League) Coach of the Year.

The emphasis is on defense on Selvig's teams. The Lady Griz led the nation in scoring defense last season, allowing just 53.5 points a game. UM also led the NWBL in scoring defense each of the last four seasons.

Defense was also important to Selvig when he played guard for the University of Montana in the early 70's. In 1974, as a senior, he was named the team's Outstanding Defensive Player. He was also an All-Big Sky Conference second-team selection and won the University's top athletic award, the Grizzly Cup.

Before taking over the Lady Griz basketball program, Selvig was the head coach of the girls' basketball team at Plentywood High School from 1975 to 1978.

Assistant Coach Annette Whitaker



Annette Whitaker
Assistant Coach

Whitaker is in her second season as an assistant women's basketball coach at UM. She serves as the head coach of the JV program and led the squad to a 7-3 record in 1981-82. She also assists Selvig with the varsity coaching duties.

Prior to joining the coaching ranks, Whitaker was a two-year starter at the guard position for the Lady Griz.

She received her bachelor's degree in Health and Physical Education from UM in 1982. She is currently working on her master's degree in HPE.

The Outlook



**Senior Guard
Cathy St. John**

High expectations surround the 1982-83 University of Montana women's basketball team. All ten letterwinners are back from the 1981-82 squad which finished the season with a 22-5 record and made its first appearance in the AIAW National Tournament. Three top high school prospects have joined the team, adding speed, quickness and depth.

"Naturally, with everyone back and three top newcomers, we're expecting to have another good season," said fifth-year coach Robin Selvig, who sports a 76-36 record. "We should be much improved from the experience standpoint. We were young last season and that cost us sometimes, but I hope we learned

from our mistakes. We run a lot of things that are hard to catch onto right away so I think we'll be able to polish our skills this year."

"The experience of being in a national tournament is irreplaceable," he continued. "We just have to use that to our advantage and make sure that we don't make the same mistakes again if we go back to nationals. We had a chance to win the game (57-52 loss to Wayland Baptist), but we just didn't have that killer instinct."

The returnees include six players who started at least 17 games last season.

Leading the way are juniors Doris Deden and Cheri Bratt and senior Juli Eckmann.

Deden, a 6-1 center from Missoula, led the Lady Griz in scoring and rebounding, averaging 13.9 points and 7.1 rebounds. She was selected as the team MVP and was a second-team All-NWBL (Northwest Women's Basketball League) pick.

Bratt, a 5-10½ guard from Kalispell, averaged 10.2 points, 6.5 rebounds and 4 assists last season. She was named the Outstanding Defensive Player on the team and was a second-team All-NWBL choice.

Eckmann, a 5-11 guard-forward from Minot, N.D., averaged 9.3 points and 3.2 rebounds last year. Her clutch outside shooting led the Lady Griz to several victories.

The other returning starters are sophomore Barb Kavanagh and juniors Shari Thesenvitz and Siobhan Hathhorn.

Kavanagh, a 5-9½ guard from Fort Collins, Colo., won a starting spot in the fourth game of the season. She averaged 8.5 points, 2.4 rebounds and 3.7 assists from the lead guard position.

Thesenvitz and Hathhorn alternated at the starting strong forward position. Thesenvitz, a 6-footer from Richland, Wash., averaged 6.5 points and 6.5 rebounds. Hathhorn, a 6-footer from Anchorage, Alaska, chipped in 5.9 points and 5.9 rebounds a game.

Other returning letterwinners include sophomore Anita Novak and seniors Cathy St. John, Sue Habbe and Ruth Fugleberg.

Novak, a 6-2½ forward-center from Minot, N.D., was UM's top reserve last season. She averaged 6.9 points and 5.1 rebounds. She led

the team in scoring three times and rebounding five times, sparking several come-from-behind victories.

St. John, a 5-8 guard from Opheim, averaged 2.7 points and 1.4 rebounds last season. Habbe, a 5-8 guard from Missoula, averaged 2.1 points and 1.4 rebounds in 20 games. Fugleberg missed all but nine games because of injuries. She averaged 2 points and 2.4 rebounds.

All three recruits should be able to help the team right away, according to Selvig. The newcomers are Sharla Muralt, a 6-1 center from Missoula, Jami Dickerson, a 5-9½ guard from Great Falls and Margaret Williams, a 5-8 guard from Olympia, Wash.

"I'm very pleased with our recruiting year," Selvig said. "We got the players we wanted and improved our weak areas. We greatly improved our speed and quickness with Jami and Margaret. And Sharla has the potential to be an outstanding Division I post player."

Muralt averaged 16 points and 12 rebounds in leading Sentinel High to a second-place finish in the state "AA" tournament. She was a Converse High School All-American as a senior.

Dickerson, from two-time undefeated state "AA" champion Great Falls High, averaged 9 points and 9.5 rebounds last season. She was the



Senior Guard Sue Habbe

MVP of the state tournament and an honorable-mention Converse High School All-American her senior year.

Williams averaged 17.9 points and 5.7 rebounds, 4.5 assists and 5.5 steals as a senior at Olympia High. She was the Player of the Year in the Black Hills League as a senior.

Defense has been a key to UM's success in the last few years and this season should be no exception. The Lady Griz led the nation (Division I) in scoring defense last season, allowing just 53.5 points a game. However, Selvig sees room for improvement.

"We're very proud of leading the nation in defense, but that doesn't mean we won't be looking for improvement this year," he said. "We were very young last season and we made some defensive mistakes. Every player on the team has room for improvement and that means we have miles to go as a team. The added speed and quickness will allow us to do some new things on defense so that should make us even stronger."

UM's other main strength will be depth, according to Selvig.

"This is definitely the deepest team we've had here," Selvig said. "I

expect some intense battles for playing time. We'll have a lot of people playing and contributing in different ways."

The Lady Griz set a school record for scoring average (66.7 ppg) last season and Selvig looks for even more improvement in that area.

"Our offense has gotten a little better each of the last four seasons and I think we'll make another positive stride in that area this year," he added. "Our offense was very good at times last season, but we made too many turnovers. We need to improve our consistency and the added experience should help there. This is another area where the speed and quickness will make us better. We'll have a lot more options on offense than we did last year."

All the ingredients for an outstanding season are there but 27 roadblocks stand in the way. The Lady Griz will face "as tough of a schedule as we've ever played," according to Selvig.

"We are definitely going to have to improve to have the kind of season we had last year," said Selvig. "We start out the year with a tough opponent in Washington State and it doesn't get any easier as we go along. We have two big tournaments (Lady Griz Insurance Classic and Cal Invitational) and some tough non-conference opponents.

In addition to Washington State, UM will meet non-conference foes such as Washington and Brigham Young University.

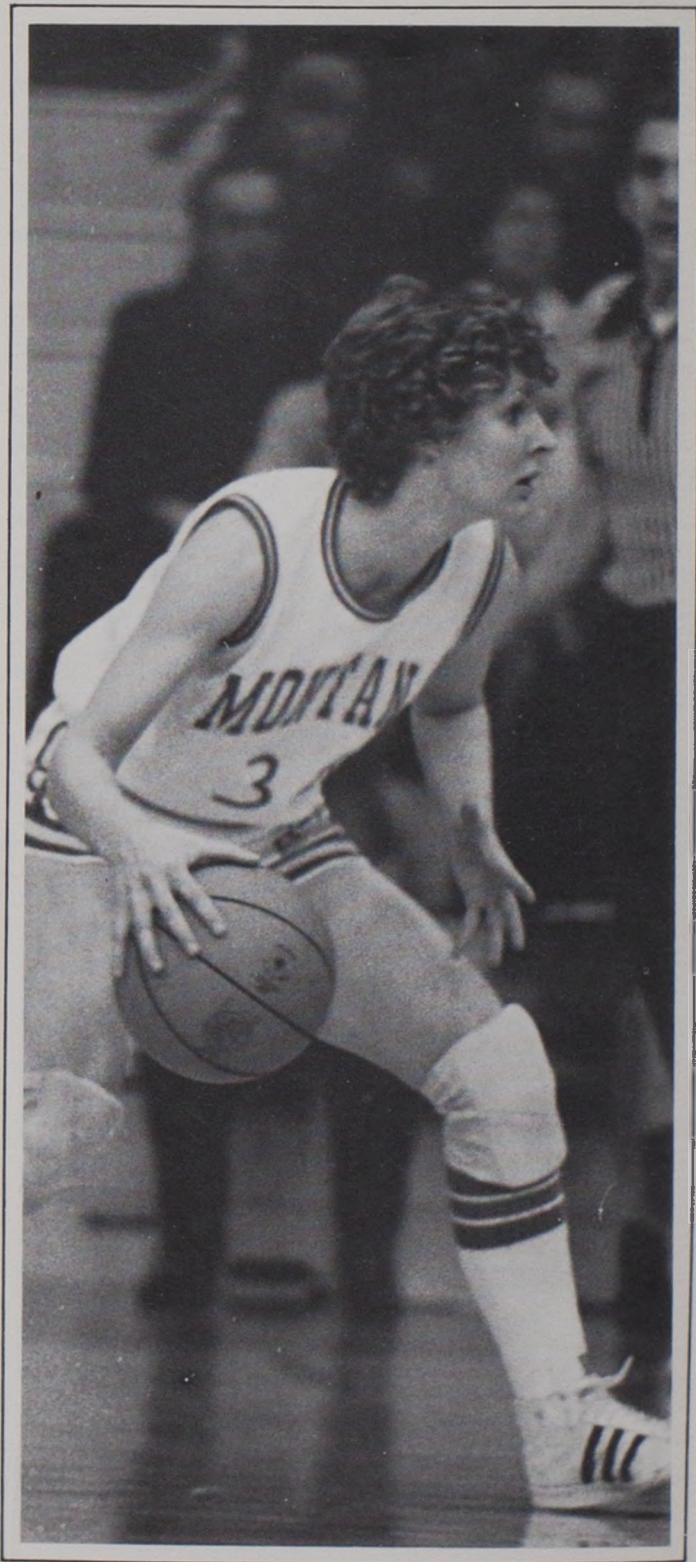
Other participants in the Lady Griz Insurance Classic, to be held Jan. 4-5 in Missoula, are Cal State-Fullerton, Wyoming and Utah State. Arkansas and California join Montana in the Cal Invitational.

The Lady Griz also begin to play in the newly-formed Mountain West Athletic Conference this season. Other conference members are Boise State, Eastern Washington, Idaho, Idaho State, Montana State, Portland State and Weber State.

"I think the league race will be very close," Selvig said. "There are no really weak teams and I think everyone has a chance to qualify for the playoffs (top four teams advance to the conference tourney)."



Junior Forward Siobhan Hathorn



THE RETURNEES

Juli Eckmann



Guard-Forward . . . 5-11 . . . Senior . . . Magic City Campus . . . Minot, N.D. . . . Juli Eckmann has played an important role in the development of UM's women's basketball program over the past three seasons. She was a key reserve her first two years and started all 27 games in 1981-82. Juli averaged 9.3 points and 3.1 rebounds last season.

"Juli is a great team player. She always seems to come up with the clutch play when we need it," Selvig said. "She improved her entire game last season and she was a big factor in our success."

Eckmann came to UM after being named North Dakota Girl Athlete of the Year as a senior at Magic City Campus. Juli was also named to the Converse High School All-America Basketball team her senior year.

Juli is a Clothing and Textiles and Education major. Her parents are Wally and Iris Eckmann of Minot, N.D. Birthdate: 11-9-60.

Statistically:

Year	Games	FG-FGA-PCT	FT-FTA-PCT	Pts.	Ave.	Rebs.	Ave.
1979-80	28	42-103-.408	32-47-.681	116	4.1	66	2.4
1980-81	30	54-129-.419	39-52-.750	147	4.9	59	2.0
1981-82	27	103-247-.417	44-57-.772	250	9.3	83	3.1
Career	85	199-479-.415	115-156-.737	513	6.0	190	2.2

Ruth Fugleberg

Forward . . . 5-8 . . . Senior . . . Polson High . . . Polson, Mont. . . After transferring from Boise State, Ruth Fugleberg suffered through an injury-plagued season in 1981-82. She missed all but nine games because of a broken hand and a bone chip on her ankle. She averaged 2 points and 2.4 rebounds a game.

"Ruth never really got a chance to prove herself last season because of all the injuries," Selvig said. "She's a tremendous rebounder for her size and also has a nice shooting touch. She will definitely be vying for playing time this season."



Fugleberg was a second-team all-conference pick as a sophomore at Boise State. She was also all-conference and all-state at Polson High.

Ruth is a Speech Pathology major. Her parents are Paul and Mary Lou Fugleberg of Polson, Mont. Birthdate: 1-29-60.

Statistically:

Year	Games	FG-FGA-PCT	FT-FTA-PCT	Pts.	Ave.	Rebs.	Ave.
1981-82	9	8-24-.333	2-6-.333	18	2.0	22	2.4

On the opposite page: Junior Guard Cheri Bratt

Sue Habbe



Guard . . . 5-8 . . . Senior . . . Hellgate High . . . Missoula, Mont. . . . Sue Habbe has improved her play every season she has played for the Lady Griz. She won the first-annual Shannon Green Inspirational Award last season. Sue averaged 1.9 points and 1.3 rebound in 1981-82.

"Sue makes a very positive contribution to our program," said Selvig. "She is probably the hardest worker I've ever seen and she has improved her guard skills every year she's been in the program."

Habbe won a spot on the varsity after spending her freshman season on the JV's. She was a four-year letterwinner in basketball and a two-year letterwinner in golf at Hellgate High.

Sue is a Health and Physical Education major. Her parents are Don and Doosy Habbe of Missoula, Mont. Birthdate: 10-19-61.

Statistically:

Year	Games	FG-FGA-PCT	FT-FTA-PCT	Pts.	Ave.	Rebs.	Ave.
1980-81	12	9-24 .375	2-10 .200	20	1.7	14	1.2
1981-82	20	15-31 .484	11-21 .524	41	2.1	28	1.4
Career	32	24-55 .436	13-31 .419	61	1.9	42	1.3

Cathy St. John

Guard . . . 5-8 . . . Senior . . . Opheim High . . . Opheim, Mont. . . . Cathy St. John has a good shooting touch and has ignited several rallies for the Lady Griz from off the bench. She averaged 2.7 points and 1.4 rebounds last season despite a slow recovery from a broken leg.

"Cathy played very well late last season," Selvig said. "She has good offensive skills and is very steady on defense. I have a great deal of confidence in Cathy in any situation."

St. John was an all-conference selection at Opheim High.

Cathy is majoring in Elementary Education. Her parents are Myron and Mary St. John of Opheim, Mont. Birthdate: 10-16-60.



Statistically:

Year	Games	FG-FGA-PCT	FT-FTA-PCT	Pts.	Ave.	Rebs.	Ave.
1979-80	24	23-81 .284	29-54 .537	60	2.5	61	2.5
1980-81	29	41-96 .427	26-44 .591	108	3.7	40	1.4
1981-82	26	23-53 .434	24-37 .649	70	2.7	36	1.4
Career	79	87-230 .378	79-135 .585	238	3.0	137	1.7

Cheri Bratt

Guard . . . 5-10½ . . . Junior . . . Flathead High . . . Kalispell, Mont. . . A starter since her freshman season, Cheri Bratt is UM's most complete player. She averaged 10.2 points, 6.5 rebounds and four assists last season. She also led the team with 59 steals.

Bratt was chosen as the Outstanding Defensive Player last year. Cheri was also a first-team CoSIDA (College Sports Information Directors of America) District 7 all-academic selection and a second-team all-conference pick.

"Cheri excels in all phases of the game so we depend on her in a lot of different situations," Selvig said. "She had some great games last year so we'll just be looking for a little more consistency from her this season."

Bratt holds the UM single-season record for assists (128) and steals (94). She also ranks ninth in career scoring with 493 points and sixth in career rebounding with 320 boards.

Cheri was one of the top players in the state when she played for Flathead High. She was named to the "AA" state tournament team all four years and was named to the all-conference and all-state teams her last three years.

Cheri is a Pre-Med major. Her parents are Glee and Karen Bratt of Kalispell, Mont. Birthdate: 2-23-62.



Statistically:

Year	Games	FG-FGA-PCT	FT-FTA-PCT	Pts.	Ave.	Rebs.	Ave.
1980-81	30	114-272-.419	30-59-.509	258	8.6	170	5.7
1981-82	23	101-211-.479	33-49-.673	235	10.2	150	6.5
Career	53	215-483-.445	63-98-.642	493	9.3	320	6.0

Doris Deden



Center . . . 6-1 . . . Junior . . . Sentinel High . . . Missoula, Mont. . . Doris Deden has already firmly established her place in the UM record book. She is currently the third-leading career scorer with 667 points and fifth-leading career rebounder with 402 boards. She also holds the school single season records for field goal percentage (.534) and blocked shots (36).

Deden was the Lady Griz' 1981-82 MVP as she led the team in scoring and rebounding, averaging 13.9 points and 7.1 rebounds. She was a first-team CoSIDA District 7 all-academic pick and a second-team all-conference choice.

"Doris is coming off a very good season and she worked hard in the off-season so we're looking for good things from her this year," Selvig said. "She's an excellent scorer. She just needs to improve her rebounding and cut down on turnovers this year."

Deden led the Sentinel Spartans to the state "AA" championship her senior year. She was named to the all-tournament team each of her last three-years and was an all-state selection her last two seasons.

Doris is a Math major. Her parents are Richard and Nancy Deden of Missoula, Mont. Birthdate: 5-26-62.

Statistically:

Year	Games	FG-FGA-PCT	FT-FTA-PCT	Pts.	Ave.	Rebs.	Ave.
1980-81	30	111-208-.534	71-110-.645	293	9.8	210	7.0
1981-82	27	137-275-.498	100-144-.694	374	13.9	192	7.1
Career	57	248-483-.513	171-254-.673	667	11.7	402	7.1

Siobhan Hathhorn



Forward . . . 6-0 . . . Junior . . . Diamond High . . . Anchorage, Alaska . . . Siobhan Hathhorn came to UM last year after spending her freshman season at Stanford and started 17 games for the Lady Griz. She averaged 5.9 points and 5.9 rebounds in 1981-82.

"Siobhan was one of our best defensive players last season and was consistent offensively," said Selvig. "She has a good shot and should continue to improve offensively as she adjusts to our system."

Hathhorn was a three-time all-state selection at Diamond High. She also excelled in volleyball and was a Carnation All-American in that sport.

Siobhan is majoring in Geography. Her parents are Marvin and Kay Hathhorn of Anchorage, Alaska. Birthdate: 1-14-62.

Statistically:

Year	Games	FG-FGA-PCT	FT-FTA-PCT	Pts.	Ave.	Rebs.	Ave.
1981-82	27	70-140-.500	20-36-.556	160	5.9	159	5.9

Shari Thesenvitz

Forward . . . 6-0 . . . Junior . . . Hanford High . . . Richland, Wash. . . . Shari Thesenvitz started 17 games at the strong forward position for UM last season. She averaged 6.5 points and 6.5 rebounds in 1981-82.

"Shari is an outstanding defensive player and her offensive potential is unlimited," said Selvig. "It's just a case where she needs to gain confidence. She had some good offensive games last season, but she wasn't as consistent as we'd like."

Shari was a first-team all-conference selection and a second-team all-state pick as a senior at Hanford High. Her team finished second in the state "AA" tournament her senior year.

Shari is a General Studies major. Her parents are Glenn and Sharleen Thesenvitz of Richland, Wash. Birthdate: 9-4-62.



Statistically:

Year	Games	FG-FGA-PCT	FT-FTA-PCT	Pts.	Ave.	Rebs.	Ave.
1980-81	22	18-55-.327	13-27-.481	49	2.2	54	2.5
1981-82	27	69-179-.385	37-67-.552	175	6.5	175	6.5
Career	49	87-234-.372	50-94-.532	224	4.6	229	4.7

Barb Kavanagh

Guard . . . 5-9½ . . . Sophomore . . . Rocky Mountain High . . . Fort Collins, Colo. . . .

Barb Kavanagh won a starting spot in the fourth game last season and did an excellent job of running the offense. She averaged 8.5 points, 2.4 rebounds and 3.7 assists from the lead guard position.

"Barb showed more poise than I've ever seen before in a freshman," Selvig said. "She learned a lot as the season went on and played well under pressure. She's an outstanding shooter and I think she'll continue to improve her whole game this season."

Kavanagh was a two-time all-conference and all-state pick at Rocky Mountain High. She was the MVP of the conference tournament her senior year. Barb played her sophomore year at Hellgate High in Missoula.

Barb is majoring in Math. Her mother is Georgianna Taylor of Fort Collins, Colo. Her father is John Kavanagh of Shelby, Mont. Birthdate: 9-30-63.



Statistically:

Year	Games	FG-FGA-PCT	FT-FTA-PCT	Pts.	Ave.	Rebs.	Ave.
1981-82	27	95-215-.442	40-51-.784	230	8.5	64	2.4

Anita Novak



Forward-Center . . . 6-2½ . . . Magic City Campus . . . Minot, N.D. . . .

Anita Novak showed promise at both center and strong forward last season. She averaged 6.9 points and 5.1 rebounds as UM's top reserve in 1981-82.

Novak led the Lady Griz in scoring three times and in rebounding five times, sparking several comebacks.

"Anita's potential is completely unlimited," Selvig said. "She improved her jumping and strength in the off-season and she already had all the tools to be an outstanding forward or

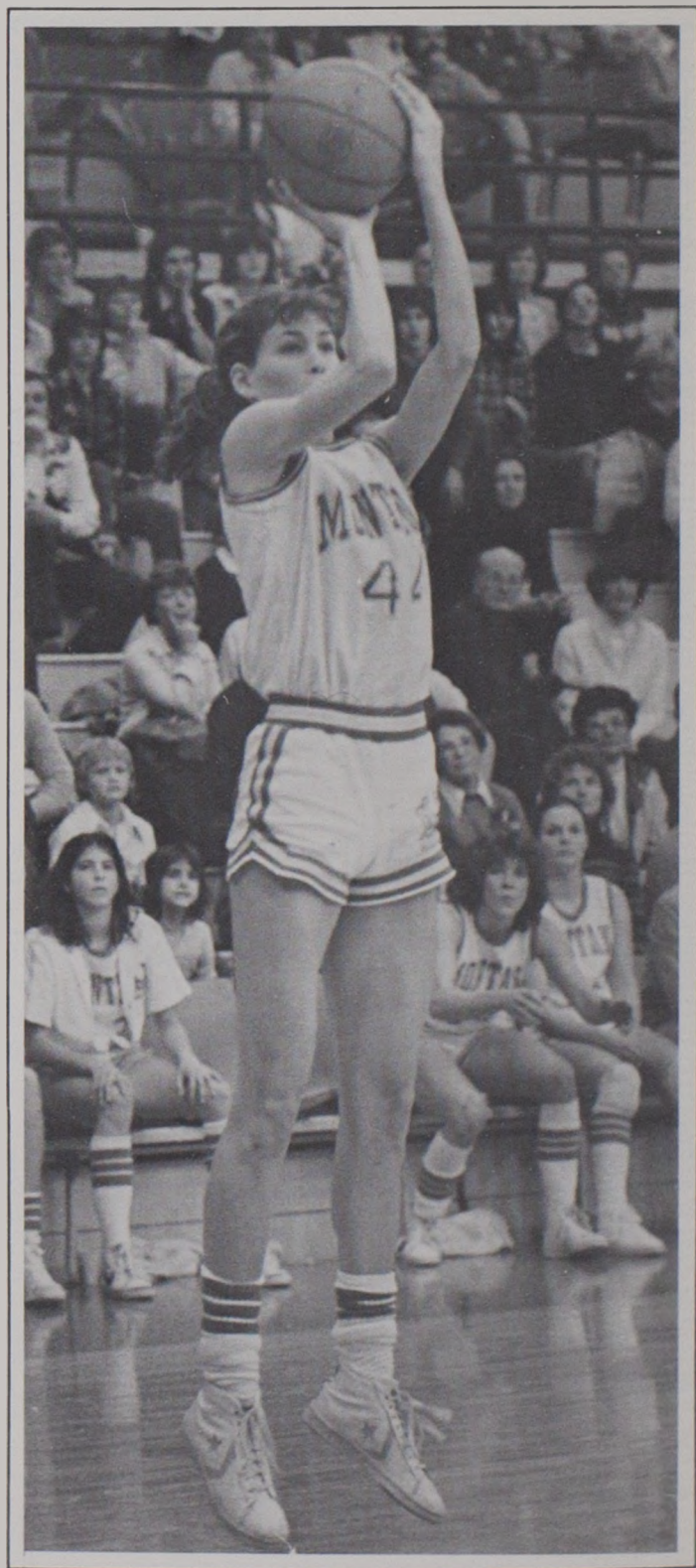
center. She's going to be very hard to keep out of the starting lineup this season."

One of the most highly recruited athletes in North Dakota history, Novak was contacted by more than 75 schools before deciding on UM. She was a two-time all-conference and all-state selection and was named to the Converse High School All-America team as a senior at Magic City Campus.

Anita is a General Studies major. Her parents are Donald and Shirley Novak, Sr. of Minot, N.D. Birthdate: 12-26-62.

Statistically:

Year	Games	FG-FGA-PCT	FT-FTA-PCT	Pts.	Ave.	Rebs.	Ave.
1981-82	27	76-183-.415	35-61-.574	187	6.9	139	5.1



THE NEWCOMERS

Jami Dickerson

Guard . . . 5-9½ . . . Freshman . . . Great Falls High . . . Great Falls, Mont. . . . An all-stater from two-time undefeated state "AA" champion Great Falls High, Jami Dickerson brings outstanding speed and quickness to the UM lineup.

Dickerson averaged 9 points and 9.5 rebounds her senior season. Jami was the MVP of the 1982 state tournament and an honorable-mention Converse High School All-American in 1981-82.

"Jami is a tenacious player and I think she'll be an excellent defensive player for a freshman," said Selvig. "She comes from an outstanding program and is a winner in every sense of the word. She will add a lot to our program."

Jami is a Computer Science major. Her parents are Tom and Peg Dickerson of Great Falls, Mont. Birthdate: 1-25-64.



Sharla Muralt



Center . . . 6-1 . . . Freshman . . . Sentinel High . . . Missoula, Mont. . . . A top-notch post player in high school, Sharla Muralt should see a lot of action at center for the Lady Griz.

Muralt averaged 16 points and 12 rebounds in leading Sentinel High to a second-place finish in the state "AA" tournament her senior year. She was a two-time all-state and all-conference pick and was the MVP of the divisional tournament as a senior. Sharla was also a Converse High School All-American as a senior.

"Sharla has the potential to be an outstanding Division I post player," Selvig said. "She has excellent mobility and deceptively good speed for her size."

Sharla is majoring in Computer Science. Her parents are Gary and Susan Muralt of Missoula, Mont. Birthdate: 12-10-63.

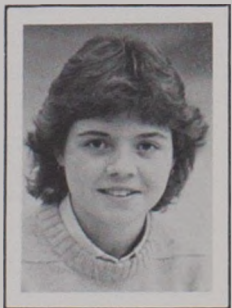
Margaret Williams

Guard . . . 5-8 . . . Freshman . . . Olympia High . . . Olympia, Wash. . . . Margaret Williams has the speed and quickness to add a whole new dimension to the Lady Griz.

Williams averaged 17.9 points, 5.7 rebounds, 4.5 assists and 5.5 steals as a senior at Olympia High. She was the Player of the Year in the Black Hills League as a senior. Margaret was also team MVP her junior and senior years.

"Margaret is probably the fastest, quickest player we've ever had in our program," Selvig said. "She has excellent lead guard skills and is a good shooter. She will definitely have a chance to play right away."

Margaret is majoring in Political Science. Her parents are Bill and Ruth Williams of Olympia, Wash. Birthdate: 5-15-64.



On the opposite page: Junior Forward Shari Thesenvitz

1982-83 LADY GRIZ

Lt.	Dk.	Name
10	11	Ruth Fugleberg*
12	13	Margaret Williams
14	15	Sue Habbe**
20	21	Barb Kavanagh*
22	23	Juli Eckmann***
24	25	Cathy St. John***
30	31	Siobhan Hathhorn*
32	33	Jami Dickerson
34	35	Cheri Bratt**
40	41	Anita Novak*
42	43	Doris Deden**
44	45	Shari Thesenvitz**
50	51	Sharla Muralt

*Letters Won



Front Row (L-R): Cheri Bratt, Sue Habbe, Margaret Williams, Cathy St. John, Barb Kavanagh, Jami Dickerson, Ruth Fugleberg, Assistant Coach Annette Whitaker.

NUMERICAL ROSTER

Pos.	Ht.	Cl.	Hometown
F	5-8	Sr.	Polson, Mont.
G	5-8	Fr.	Olympia, Wash.
G	5-8	Sr.	Missoula, Mont.
G	5-9½	So.	Fort Collins, Colo.
G-F	5-11	Sr.	Minot, N.D.
G	5-8	Sr.	Opheim, Mont.
F	6-0	Jr.	Anchorage, Alaska
G	5-9½	Fr.	Great Falls, Mont.
G	5-10½	Jr.	Kalispell, Mont.
F-C	6-2½	So.	Minot, N.D.
C	6-1½	Jr.	Missoula, Mont.
F	6-0	Jr.	Richland, Wash.
C	6-1	Fr.	Missoula, Mont.



Back Row (L-R): Athletic Trainer Pat Archer, Shari Thesenvitz, Doris Deden, Anita Novak, Sharla Muralt, Siobhan Hathhorn, Juli Eckmann, Head Coach Robin Selvig.

1981-82

Player	G-S	FG-FGA-Pct.	FT-FTA-Pct.
Doris Deden	27-27	137-275-.498	100-144-.694
Cheri Bratt	23-22	101-211-.479	33- 49-.673
Juli Eckmann	27-27	103-247-.417	44- 57-.772
Barb Kavanagh	27-24	95-215-.442	40- 51-.784
Anita Novak	27- 0	76-183-.415	35- 61-.574
Shari Thesenvitz	27-17	69-179-.385	37- 67.552
Siobhan Hathhorn	27-17	70-140-.500	20- 36-.556
Janet Ruetten	10- 0	12- 48-.250	13- 17-.767
Cathy St. John	26- 1	23- 53-.434	24- 37-.649
Sheri Henry	9- 0	8- 14-.571	4- 7-.571
Sue Habbe	20- 0	15- 31-.484	11- 21-.524
Ruth Fugleberg	9- 0	8- 24-.333	2- 6-.333
Mary Koehler	6- 0	2- 12-.182	0- 0-.000

UM TEAM REBOUNDS: 94

MONTANA	27	719-1632-.441	363-553-.656
OPPONENTS	27	563-1520-.370	318-501-.635

Turnovers (516): Bratt 100, Deden 83, Kavanagh 83, Eckmann 55, Hathhorn 47, Thesenvitz 42, Novak 30, St. John 27, Habbe 26, Fugleberg 9, Ruetten 8, Henry 4, Koehler 2. Opponent Turnovers: 562.

Steals (292): Bratt 59, Eckmann 49, Kavanagh 38, Hathhorn 31, Thesenvitz 25, Deden 23, St. John 21, Novak 14, Ruetten 10, Habbe 10, Fugleberg 6, Koehler 4, Henry 2. Opponent Steals: 268.

Blocked Shots (94): Deden 36, Thesenvitz 15, Novak 11, Eckmann 11, Bratt 9, St. John 4, Hathhorn 2, Ruetten 2, Kavanagh 1, Habbe 1, Koehler 1, Henry 1. Opponent Blocked Shots: 67.

Deadball Rebounds: Montana 58, Opponents 50.

*Rebound Total Includes Team Rebounds.

FINAL STATISTICS

Reb-Avg.	PF-D	A-Avg.	Pts-Avg.	High
192-7.1	95-6	18-0.7	374-13.9	30
150-6.5	76-5	93-4.0	235-10.2	19
83-3.1	47-2	65-2.4	250- 9.3	18
64-2.4	32-0	99-3.7	230- 8.5	18
139-5.1	58-2	20-0.7	187- 6.9	19
175-6.5	48-3	28-1.0	175- 6.5	13
159-5.9	60-4	33-1.2	160- 5.9	16
21-2.1	10-0	6-0.6	37- 3.7	9
36-1.4	18-0	11-0.4	70- 2.7	12
8-0.9	5-0	1-0.1	20- 2.2	6
28-1.4	14-0	13-0.7	41- 2.1	12
22-2.4	14-0	3-0.3	18- 2.0	6
3-0.5	2-0	4-0.7	4- 0.7	2

OPPONENT TEAM REBOUNDS: 104

1174-43.5*	479-22	394-14.6	1801-66.7	90
961-35.6*	517-20	324-12.0	1444-53.5	76



Senior Forward Ruth Fugleberg

1981-82

(22-5 Overall;

W-L	Opponent
1-0	College of Great Falls
2-0	Carroll College
3-0	Alaska-Anchorage†
4-0	Alaska-Anchorage†
5-0	Western Montana
6-0	Montana Tech
7-0	Weber State
8-0	Utah
8-1	Brigham Young
9-1	Carroll College
10-1	Stanford‡
10-2	Drake‡
11-2	Montana State†
12-2	Washington
13-2	Eastern Washington†
14-2	Washington State†
15-2	Boise State†
16-2	Portland State†
17-2	Gonzaga
18-2	Montana State†
19-2	Boise State†
20-2	Washington State†
21-2	Eastern Washington†
22-2	Portland State†
22-3	Oregon State
22-4	Oregon
22-5	Wayland Baptist§

‡Lady Griz Insurance Classic II

†Conference Game

§AIAW Tournament at Berkeley, Calif.

Results

12-0 Conference)

UM-Opp High Scorer(s)/Rebounder(s)

77-36	Eckmann 16/Fugelberg 10
90-57	Deden 30/Deden 12
70-47	Novak 19/Thesenvitz 10
69-46	Deden 19/Novak 8
57-47	Kavanagh 14/Thesenvitz 8
82-53	Kavanagh 18/Novak 14
72-61	Deden 19/Hathhorn 12
58-48	Deden 12/Bratt 9
66-76	Bratt, Kavanagh 15/Deden 11
68-35	Deden 11/Bratt, Novak 8
65-52	Deden 20/Hathhorn 11
65-71	Bratt 19/Bratt 10
88-60	Novak 14/Deden 8
67-62	Eckmann 18/Deden 8
67-57	Deden 19/Three with 10
57-52	Bratt 19/Bratt 10
60-42	Deden, Thesenvitz 13/Thesenvitz 11
80-47	Deden 15/Bratt 10
70-45	Novak 17/Novak 16
60-48	Deden, Thesenvitz 11/Bratt 9
59-50	Deden 20/Bratt 8
56-46	Bratt 15/Deden 10
52-50	Deden 15/Deden 9
73-57	Hathhorn 16/Novak 9
65-72	Eckmann 12/Three with 6
56-70	Eckmann 14/Deden 13
52-57	Deden 17/Hathhorn 10

THE RECORD BOOK

Team Records

Season:

Most Wins—22, 1980-81 and 1981-82

Scoring Average—66.7, 1981-82

Field Goals—792, 1980-81

Field Goal Attempts—1874, 1980-81

Field Goal Percentage—44.1%, 1981-82

Free Throws—389, 1980-81

Free Throw Attempts—629, 1980-81

Free Throw Percentage—65.6%, 1981-82

Rebounds—1381, 1980-81

Rebounding Average—46.7, 1979-80

Assists—437, 1980-81

Steals—337, 1980-81

Blocked Shots—125, 1980-81

Defensive Scoring Average—53.5, 1981-82

Winning Percentage—81.5%, 1981-82

Single Game:

Most Points—90 vs. Carroll College, 1981-82

Most Points Allowed—89 vs. Oregon, 1980-81

Most Rebounds—66 vs. Montana State, 1980-81

Individual Records

Career:

Most Points—933, Jill Greenfield, 1979-81

Most Rebounds—626, Linda Deden Smith, 1976-80

Season:

Most Points—484, Jill Greenfield, 1980-81

Highest Scoring Average—16.1, Jill Greenfield, 1980-81

Most Field Goals—191, Jill Greenfield, 1980-81

Most Field Goal Attempts—395, Jill Greenfield, 1980-81

Most Free Throws—102, Jill Greenfield, 1980-81

Most Free Throw Attempts—150, Jill Greenfield, 1980-81

Field Goal Percentage—53.4%, Doris Deden, 1980-81

Free Throw Percentage—85.2%, Janet Ruetten, 1979-80

Most Rebounds—318, Jill Greenfield, 1980-81

Highest Rebounding Average—10.6, Jill Greenfield, 1980-81

Most Assists—128, Cheri Bratt, 1980-81

Most Steals—94, Cheri Bratt, 1980-81

Most Blocked Shots—36, Doris Deden, 1981-82

Single Game:

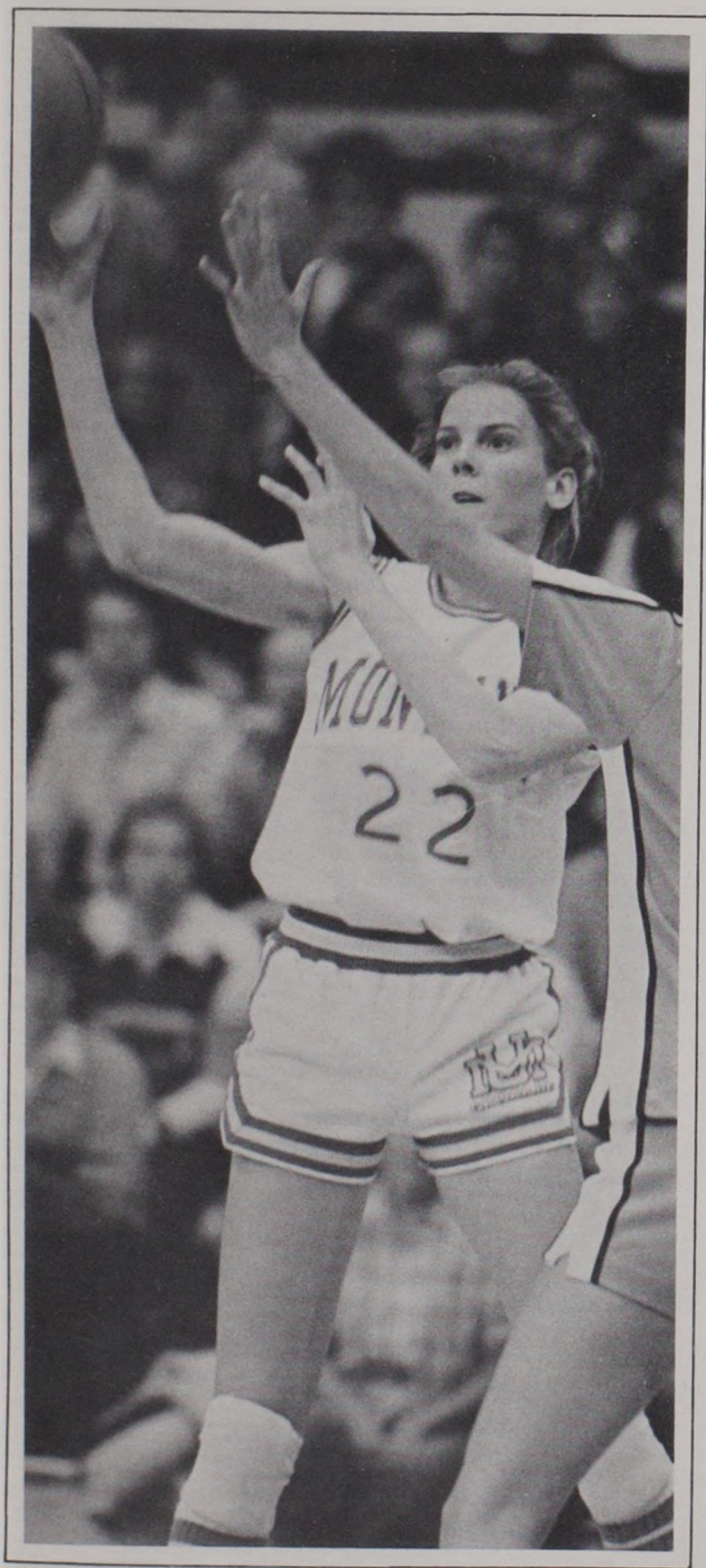
Most Points—32, Jill Greenfield vs. Boise State, Feb. 9, 1980

Most Rebounds—19, Sandy Selvig vs. Flathead Valley
Community College, Dec. 29, 1978

Attendance

1,730, vs. Montana State, January 14, 1982

On the opposite page: Senior Guard-Forward Juli Eckmann



THE OPPONENTS

WASHINGTON STATE—Games 1 and 10
Nov. 20 in Dahlberg Arena 7:30 p.m.;
Dec. 17 in Pullman

Location: Pullman, Wash.; Enrollment: 17,000; Nickname: Cougars; Colors: Crimson & Gray; Conference: NorPac (first year in conf.); Athletic Director: Sam Jankovich; SID: Roy Neese (509) 335-7758/4501; Head Coach: Harold Rhodes; 1981-82 Record: 15-14; Returning Letterwinners: 10; Returning Starters: 6; Top Returnees: Cassandra Overby (F-C, 6-1, Jr., 12.0 ppg, 6.9 rpg), Karen Brown (F-C, 6-1, Sr., 8.8 ppg, 8.3 rpg), Holly Bertus (C, 6-4, So., 8.1 ppg, 5.4 rpg), Linda Fisher (G, 5-8, So., 4.3 ppg, 2.3 rpg), Shelley Patterson (G, 5-4, Sr., 3.4 ppg, 2.6 rpg), JoBe Smith (F, 5-11, Sr., 5.1 ppg, 3.0 rpg); Top Newcomers: Nancy Tate (G, 5-8, Fr., Almira, Wash.), Marcia Miles (F, 5-11, Fr., Portland, Ore.), Cheryl Mariani (G, 5-6, Jr., Portland, Ore.), Laurie Kipp (G-F, 5-11, Fr., Havre, Mont.), Kirsten Fulton (F, 6-1, Fr., Vashon, Wash.) Series: Washington State leads 8-6.

CARROLL COLLEGE—Game 2
Nov. 22 in Dahlberg Arena at 7:30 p.m.

Location: Helena, Mont.; Enrollment: 1,250; Nickname: Lady Saints; Colors: Purple, Gold & White; Conference: Frontier (10-8, second); Athletic Director: Bob Petrino; SID: Kay Satre (406) 442-3450 ext. 210; Head Coach: Tom Kelly; 1981-82 Record: 15-13; Returning Letterwinners: 7; Returning Starters: 3; Top Returnees: Wendy Sears (F, 6-0, Sr., 15.8 ppg, 6.5 rpg), Lynn Patterson (F, 5-8, Sr., 6.3 ppg, 5.4 rpg), Carol Wirtz (F, 5-9, Sr., 7.1 ppg, 4.8 rpg); Top Newcomers: Maureen McCormack (G, 5-5, Fr., Idaho Falls, Idaho); Sue Petaja (F, 5-9, Fr., Big Timber, Mont.), Lori Phillips (F, 5-8, Fr., St. Ignatius, Mont.), Paula Roos (G, 5-7, Fr., Helena, Mont.); Series: UM leads 9-1

COLLEGE OF GREAT FALLS—Game 3
Nov. 23 in Dahlberg Arena 7:30 p.m.

Location: Great Falls, Mont.; Enrollment: 1,200; Nickname: Lady Argos; Colors: Blue & Gold; Conference: Frontier (9-5, third); Athletic Director: Steve Aggers; SID: Kevin O'Connor (406) 761-8210 Ext. 407; Head Coach: Don Cramer; 1981-82 Record: 17-9; Returning Letterwinners: 4; Returning Starters: 3; Top Returnees: Karen Caldwell (F-C, 6-0, Jr., 14.5 ppg, 10.6 rpg), Kathy Conroy (G, 5-5, So., 11.2 ppg, 1.3 rpg), Kari Bergquist (G, 5-7, So., 4.2 ppg, 2.8 rpg); Top Newcomers: Marjie Connors (G, 5-6, Fr., Glasgow, Mont.), Kathjie Nordrum (F-C, 5-10, Fr., Simms, Mont.), Debbie Silk (F-C, 6-0, Fr., Butte, Mont.), Judy Van Atta (F, 6-1, Jr., Kalispell, Mont.); Series: UM leads 4-0.

EASTERN MONTANA—Game 4
Nov. 29, in Dahlberg Arena 5:05 p.m.

Location: Billings, Mont.; Enrollment: 4,000; Nickname: Lady Yellow-jackets; Colors: Black & Gold; Conference: Independent; Athletic Director: Woody Hahn; SID: Farrell Stewart (406) 657-2268; Head Coach: Ted Anderson; 1981-82 Record: 14-13; Returning Letterwinners: 8; Returning Starters: 4; Top Returnees: Theresa O'Donnell (C, 6-0, Jr., 14.5 ppg, 10.6 rpg), Lori Fries (F, 5-10, Jr., 8.1 ppg, 5.6 rpg), Bonnie James (F-C, 5-10, Sr., 5.2 ppg, 5.4 rpg); Top Newcomers: Jackie Fleet (G-F, 5-10, Jr., Wellpinit, Wash.), Sandi Schwertfeger (F, 5-11, Fr., Helena, Mont.), Kelli Kenyon (G, 5-8, Fr., Meridan, Idaho); Series: Eastern Montana leads 3-2.

MONTANA TECH—Game 5
Nov. 30 in Butte

Location: Butte, Mont.; Enrollment: 2,400; Nickname: Orediggers; Colors: Green & Copper; Conference: Frontier (13-5, first); Athletic Director: Forrest Wilson; SID: Alan Willse (406) 496-4299; Head Coach: Jo Buysse; 1981-82 Record: 21-7; Returning Letterwinners: 11; Returning Starters: 5; Top Returnees: Connie Froke (F, 5-9, Jr., 17.4 ppg, 9.7 rpg), Kristi Hoklin (G, 5-8, Sr., 9.5 ppg, 5.7 rpg), Julie Hoklin (G, 5-8, Sr., 17.3 ppg, 5.5 rpg); Top Newcomers: Michelle Smith (F, 5-8, Fr., Redondo Beach Calif.), Mary Quade (G, 5-6, Jr., Duluth, Minn.), Toni Taylor (F, 5-8, Fr., Stevensville, Mont.); Series: UM leads 6-0.

Opponents (continued)

CAL INVITATIONAL—Games 6 & 7

Dec. 3-5 in Berkeley

Dec. 3—UM vs. Arkansas

Dec. 4—UM vs. California

Dec. 5—California vs. Arkansas

ARKANSAS

Location: Fayetteville, Ark.; Enrollment: 15,000; Nickname: Lady Razorbacks; Colors: Cardinal & White; Conference: Southwest (first year in conf.); Women's Athletic Director: Ruth Cohoon; SID: Charlie Fiss (501) 575-3707; Head Coach: Matilda Willis; 1981-82 Record: 26-10; Returning Letterwinners: 10; Returning Starters: 5; Top Returnees: Bettye Fiscus (F, 5-11, So., 18.7 ppg, 8.1 rpg), Kim Bunge (C, 6-2, Sr., 12.6 ppg, 6.5 rpg), Cheryl Orcholski (G, 5-7, Jr., 9.5 ppg, 2.6 rpg), Amanda Holley (F, 6-2, So., 8.6 ppg, 6.7 rpg), Connie Fitzgerald (G, 5-8, Sr., 5.6 ppg, 2.9 rpg); Top Newcomers: Sherri Boeller (G, 5-11, Fr., Cape Girardeau, Mo.), Anne Luostarinen (C, 6-2, Fr., Defiance, Ohio), Debra Williams (G, 5-8, Fr., Eudora, Ark.); Series: First Meeting.

CALIFORNIA

Location: Berkeley, Calif.; Enrollment: 30,100; Nickname: Golden Bears; Colors: Blue & Gold; Conference: NorPac (first year in conf.); Women's Athletic Director: Luella J. Lilly; SID: Chris Dawson (415) 642-9448; Head Coach: Gooch Foster; 1981-82 Record: 23-10; Returning Letterwinners: 9; Returning Starters: 5; Top Returnees: Cynthia Cooke (F, 5-10, So., 13.5 ppg, 8.1 rpg), Chris Sellin (F, 6-2, Sr., 11.7 ppg, 7.3 rpg), Karen Smith (G, 5-5, Jr., 11.5 ppg, 1.9 rpg), Stephanie Guinn (G, 5-7, Jr., 7.5 ppg, 3.2 rpg); Top Newcomers: Charlotte Lusschen (C, 6-7, Fr., Castro Valley, Calif.), Heli Toikka (F, 6-4, Fr., Kotka, Finland), Cynthia Stehouwer (F, 5-10, Fr., Honolulu, Hawaii); Series: First Meeting.

PACIFIC—Game 8

Dec. 6 in Stockton

Location: Stockton, Calif.; Enrollment: 4,000; Nickname: Lady Tigers; Colors: Orange & Black; Conference: NorPac (first year in conf.); Athletic Director: Elkin "Ike" Isaac; SID: Jan Williams (209) 946-2472; Head Coach: Mark French; 1981-82 Record: 15-16; Returning Letterwinners: 9; Returning Starters: 4; Top Returnees: Sheri Bates (G, 5-8, Jr., 10.3 ppg, 3.3 rpg), Joy Dana (C, 6-3, Jr., 13.0 ppg, 9.2 rpg), Sandy Kline (G, 5-9, So., 10.5 ppg, 4.0 rpg), Karen Jacobsen (F, 5-10, Sr., 7.7 ppg, 4.6 rpg), Jane Romberg (F, 6-3, So., 15.9 ppg, 8.2 rpg); Top Newcomers: Janet Otto (F, 6-1, Fr., Combined Locks, Wisc.), Janet Whitney (F, 6-1, Fr., Fresno, Calif.), Shellie Linden (G, 5-6, Fr., Grass Valley, Calif.); Series: First Meeting.

BRIGHAM YOUNG—Game 9

Dec. 11 in Dahlberg Arena 7:30 p.m.

Location: Provo, Utah; Enrollment: 26,000; Nickname: Cougars; Colors: Royal Blue & White; Conference: High Country (first year in conf.); Women's Athletic Director: Lu Wallace; SID Ellen Larsen (801) 378-6252; Head Coach: Dr. Courtney Leishman; 1981-82 Record: 24-13; Returning Letterwinners: 9; Returning Starters: 4; Top Returnees: Lori Vreeken (C, 6-2, Jr., 14.9 ppg, 5.9 rpg), Valerie Cravens (G, 5-7, Jr., 10.8 ppg, 7.4 rpg), Cindy Battistone (F, 5-10, So., 6.8 ppg, 6.3 rpg), Kathy Denton (G, 5-5, So., 4.5 ppg, 2.6 rpg); Top Newcomers: Denise Anderson (G, 5-7, Fr., Bayfield, Wisc.), Karen Hancock (F, 6-0, Fr., Tigard, Ore.); Series: BYU leads 1-0.

LADY GRIZ INSURANCE CLASSIC III—Games 11 & 12

Jan. 4-5 in Dahlberg Arena 6:30 & 8:30 p.m.

Jan. 4—First Round Games at 6:30 & 8:30 p.m.

Jan. 5—Consolation at 6:30 p.m.; Championship at 8:30 p.m.

Opponents (continued)

UTAH STATE

Location: Logan, Utah; Enrollment: 10,500; Nickname: Aggies; Colors: Navy Blue & White; Conference: Independent; Women's Athletic Director: Dr. E. Kaye Hart; SID: Tim Monsell (801) 750-2060; Head Coach: Karen Logan; 1981-82 Record: 12-20; Returning Letterwinners: 6; Returning Starters: 4; Top Returnees: Sharon Epps (F, 5-11, Sr., 15.9 ppg, 9.9 rpg), Lena Walker (F, 5-10, Sr., 10.3 ppg, 5.0 rpg), Margaret Johns (F, 6-1, Sr., 8.8 ppg, 5.9 rpg), Corrina Poto (G, 5-6, So., 5.2 ppg, 1.5 rpg); Top Newcomers: Dena Barnes (F, 6-0, Fr., Arco, Idaho), Jackie Jensen (F-C, 6-0, Fr., Roberts, Idaho), Series: Utah State leads 2-1.

WYOMING

Location: Laramie, Wyo.; Enrollment: 9,600; Nickname: Cowgirls; Colors: Brown & Yellow; Conference: High Country (first year in conf.); Athletic Director: Gary Cunningham; SID: Doug Skipper (307) 766-2256; Head Coach: Margie McDonald; 1981-82 Record: 17-12; Returning Letterwinners: 9; Returning Starters: 5; Top Returnees: Lori Kline (C, 6-3, Sr., 15.6 ppg, 9.0 rpg), Rita Makovicka (F, 6-0, Sr., 13.7 ppg, 9.8 rpg), Kristi Bennett (G, 5-6, So., 8.9 ppg, 2.4 rpg), Lisa Hynes (F, 6-0, Sr., 7.1 ppg, 5.0 rpg), Robin D'Haillecourt (G, 5-6, So., 8.0 ppg, 2.9 rpg); Top Newcomers: Sandy Floyd (F, 5-11, Fr., Colorado Springs, Colo.), Sharon Harp (C, 6-3, Fr., Portage, Wisc.), Nancy Saul (G, 5-6, Fr., Northglen, Colo.), Jackie Riley (F, Fr., 6-1, San Bernadino, Calif.); Series: First Meeting.

CAL STATE-FULLERTON

Location: Fullerton, Calif.; Enrollment: 24,500; Nickname: Titans; Colors: Blue, Orange & White; Conference: West Coast (first year in conf.); Women's Athletic Director: Leanne Grotke; SID: Janet Donovan (714) 773-3970; Head Coach: Chris Gobrecht; 1981-82 Record: 18-12; Returning Letterwinners: 8; Returning Starters: 4; Top Returnees: Nancy Ratliff (F, 5-10, Jr., 23.7 ppg, 7.7 rpg), Marlene Kline (G-F, 5-9, Sr., 12.9 ppg, 5.1 rpg), Meg Gallagher (G-F, 5-11, So, 8.3 ppg, 6.0 rpg), Terri Withers (C, 6-3, So., 5.9 ppg, 5.9 rpg); Top Newcomers: Robin Holmes (G, 5-8, Fr., El Toro, Calif.), Sonja Carter (F, 6-0, Fr., Sunnymead, Calif.), Cheryl Campbell (F-C, 6-4, Jr., Palm Desert, Calif.), Terry Mitroff (F, 6-2, So., Whittier, Calif.); Series: First Meeting.

WASHINGTON—Game 13

Jan. 8 in Seattle

Location: Seattle, Wash.; Enrollment: 35,250; Nickname: Huskies; Colors: Purple & Gold; Conference: NorPac (first year in conf.); Athletic Director: Mike Lude; SID: Mike Wilson (206) 543-2230; Head Coach: Sue Kruszewski; 1981-82 Record: 16-10; Returning Letterwinners: 8; Returning Starters: 4; Top Returnees: Karen Murray (G-F, 5-10, Jr., 15.5 ppg, 5.2 rpg), Leteia Hughley (G, 5-9, So., 14.1 ppg, 5.8 rpg), Liz Chicane (C, 6-3, Sr., 12.6 ppg, 7.2 rpg), Pat Adams (G, 5-4, Sr., 9.5 ppg, 2.3 rpg), Renee Avelino (F, 5-11, So., 7.6 ppg, 5.4 rpg); Top Newcomers: Debbie Barner (C, 6-2, Fr., Vallejo, Calif.), Nancy Howe (G, 5-10, Fr., Auburn, Wash.), Becky Wood (C, 6-3, Fr., Anderson, Ind.); Series: Washington leads 7-4.

WEBER STATE—Games 14 & 20

Jan. 14 in Ogden; Feb. 11 in Dahlberg Arena 7:30 p.m.

Location: Ogden, Utah; Enrollment: 10,500; Nickname: Lady Wildcats; Colors: Purple & White; Conference: Mountain West (first year in conf.); Women's Athletic Director: Jane Miner; SID: Nan Holyoak (801) 626-6588; Head Coach: Jane Miner; 1981-82 Record: 18-13; Returning Letterwinners: 9; Returning Starters: 5; Top Returnees: Cindy Stumph (F-C, 6-4, Sr., 23.9 ppg, 10.3 rpg), Sue Crowell (F-C, 6-1, Sr., 17.4 ppg, 7.6 rpg), Karleen Peart (G-F, 5-9, Jr., 9.6 ppg, 3.3 rpg), Carla Taylor (G-F, Jr., 5-11, 7.0 ppg 3.1 rpg), Becky Ingle (F-C, 6-0, Jr., 6.7 ppg, 8.2 rpg); Top Newcomers: Michelle Kelsey (F-C, 6-4, Fr., Clearfield, Utah), Shelley Roberts (G-F, Fr., 5-6, Orem, Utah), Blenda Henrie (G-F, 5-11, Fr., Richfield, Utah); Series: UM leads 3-2.

Opponents (continued)

IDAHO STATE—Games 15 & 22

Jan. 15 in Pocatello; Feb. 12 in Dahlberg Arena 7:30

Location: Pocatello, Idaho; Enrollment: 10,700; Nickname: Bengals; Colors: Orange & Black; Conference: Mountain West (first year in conf.); Women's Athletic Director: Kathy Hildreth; SID: Tim Ostrout (208) 236-3152; Head Coach: Beth Bricker; 1981-82 Record: 11-21; Returning Letterwinners: 12; Returning Starters: 4; Top Returnees: Renee Webster (F-C, 6-0, Sr., 13.4 ppg, 8.4 rpg), Nancy Espeseth (G, 5-7, Jr., 10.8 ppg, 2.6 rpg), Shelley Hand (F, 5-11, So., 8.4 ppg, 6.8 rpg), Darcey Williams (G, 5-9, Jr., 5.0 ppg, 5.2 rpg); Top Newcomers: Melissa Barter (G, 5-7, Jr., Twin Falls, Idaho), Pam Rahfledt (C, 6-3, Fr., Portage, Ind.), Jennifer Hadden (F, 6-0, Fr., Klamath Falls, Ore.), Lori Serbousek (F, 5-11, Fr., Spokane, Wash.), Lynn Henderson (F-C, 6-1, Fr., Burning, Ore.); Series: UM leads 3-1.

MONTANA STATE—Games 16 & 23

Jan. 21 in Bozeman; Feb. 18 in Dahlberg Arena, 7:30 p.m.

Location: Bozeman, Mont.; Enrollment: 11,187; Nickname: Bobcats; Colors: Blue & Gold; Conference: Mountain West (first year in conf.); Women's Athletic Director: Dr. Ginny Hunt; SID: Diane Milnor (406) 994-2721; Head Coach: Jane Henman; 1981-82 Record: 10-18; Returning Letterwinners: 9; Returning Starters: 5; Top Returnees: Vicki Heebner (G, 5-8, Jr., 16.5 ppg, 4.4 rpg), Kathie Roos (G-F, 5-8, Jr., 10.4 ppg, 6.0 rpg), Jane McDaniel (G-F, 5-9, Sr., 7.5 ppg, 7.5 rpg), Bobbi Hainline (G, 5-8, Jr., 11.2 ppg, 2.5 rpg), Evelyn Baldrige (C, 6-2, So., 4.6 ppg, 4.3 rpg); Top Newcomers: Kathleen McLaughlin (F, 6-0, Fr., Seattle, Wash.), Kelly Sax (F, 5-10½, Fr., Missoula, Mont.), Kathy Bignell (F, 5-10, Fr., Deer Lodge, Mont.), Sheri Henry (F, 6-0, So., Missoula, Mont.); Series: UM leads 12-5.

IDAHO—Games 17 & 24

Jan. 28 in Dahlberg Arena, 7:30 p.m.; Feb. 24 in Moscow

Location: Moscow, Idaho; Enrollment: 8,500; Nickname: Vandals; Colors: Silver & Gold; Conference: Mountain West (first year in conf.); Women's Athletic Director: Kathy Clark; SID: Ann Rice (208) 885-0200; Head Coach: Pat Dobratz; 1981-82 Record: 27-5; Returning Letterwinners: 7; Returning Starters: 3; Top Returnees: Denise Brose (C, 6-0, Sr., 18.4 ppg, 8.0 rpg), Dana Fish (F, 5-11, Jr., 13.8 ppg, 7.8 rpg), Leslie McIntosh (F, 6-0, So., 7.9 ppg, 7.2 rpg), Renee Brown (G, 5-7, Sr., 3.6 ppg, 1.9 rpg); Top Newcomers: Mary Raese (C, 6-3, Fr., Wenatchee, Wash.), Mary Westerwelle (C, 6-4, Fr., Crown Point, Ind.), Robin Behrens (G, 5-6, Fr., Yorkville, Ill.), Netra McGrew (G, 5-7, Fr., Tacoma, Wash.); Series: UM leads 2-1.

BOISE STATE—Games 18 & 25

Jan. 29 in Dahlberg Arena 5:05 p.m.; Feb. 26 in Boise

Location: Boise, Idaho; Enrollment: 10,000; Nickname: Broncos; Colors: Blue & Orange; Conference: Mountain West (first year in conf.); Women's Athletic Director: Carol Ladwig; SID: Darlene Bailey (208) 385-1656; Head Coach: Connie Thorngren; 1981-82 Record: 15-13; Returning Letterwinners: 9; Returning Starters: 4; Top Returnees: Cheron Moyle (G, 5-6, Jr., 7.6 ppg, 1.6 rpg), Connie Sandland (F, 5-10, Jr., 11.7 ppg, 5.5 rpg), Marla Curtis (F, 6-0, So., 8.5 ppg, 7.7 rpg), Tami Stuart (C, 6-0, So., 8.7 ppg, 5.2 rpg); Top Newcomers: Cindy McArthur (G, 5-10, Fr., Seattle, Wash.), Kris Reydal (C, 6-1, Fr., Everett, Wash.), Teresa Rea (F, 5-10, Jr., Huntington Beach, Calif.); Series: 6-6.

EASTERN WASHINGTON—Games 19 & 27

Feb. 3 in Cheney; Mar. 6 in Dahlberg Arena 2:00 p.m.

Location: Cheney, Wash.; Enrollment: 8,500; Nickname: Eagles; Colors: Red & White; Conference: Mountain West (first year in conf.); Women's Athletic Director: Mary Rubright; SID: Jim Price (509) 359-6334; Head Coach: Bill Smithpeters; 1981-82 Record: 19-9; Returning Letterwinners: 7; Returning Starters: 2; Top Returnees: Lori Clarke (F, 6-0, So., 9.3 ppg, 5.4 rpg), Lisa Comstock (G, 5-6, So., 6.6 ppg, 1.0 rpg),

Opponents (continued)

Fay Zwarych (F, 6-0, Jr., 4.1 ppg, 1.6 rpg), Sue Karstetter (C, 6-0, Sr., 5.2 ppg, 4.3 rpg), Monica Van Riper (F, 5-9, So., 7.4 ppg, 2.7 rpg); Top Newcomers: Kathy Taylor (C, 6-1, Fr., Tacoma, Wash.), Heather Hughes (G-F, 5-10, Fr., Vancouver, Wash.), Christy Cochran (C, 6-1, Fr., Castle Rock, Wash.), Karen Butterfield (F, 5-10, Fr., Joseph, Ore.); Series: UM leads 7-6.

PORTLAND STATE—Games 20 & 26

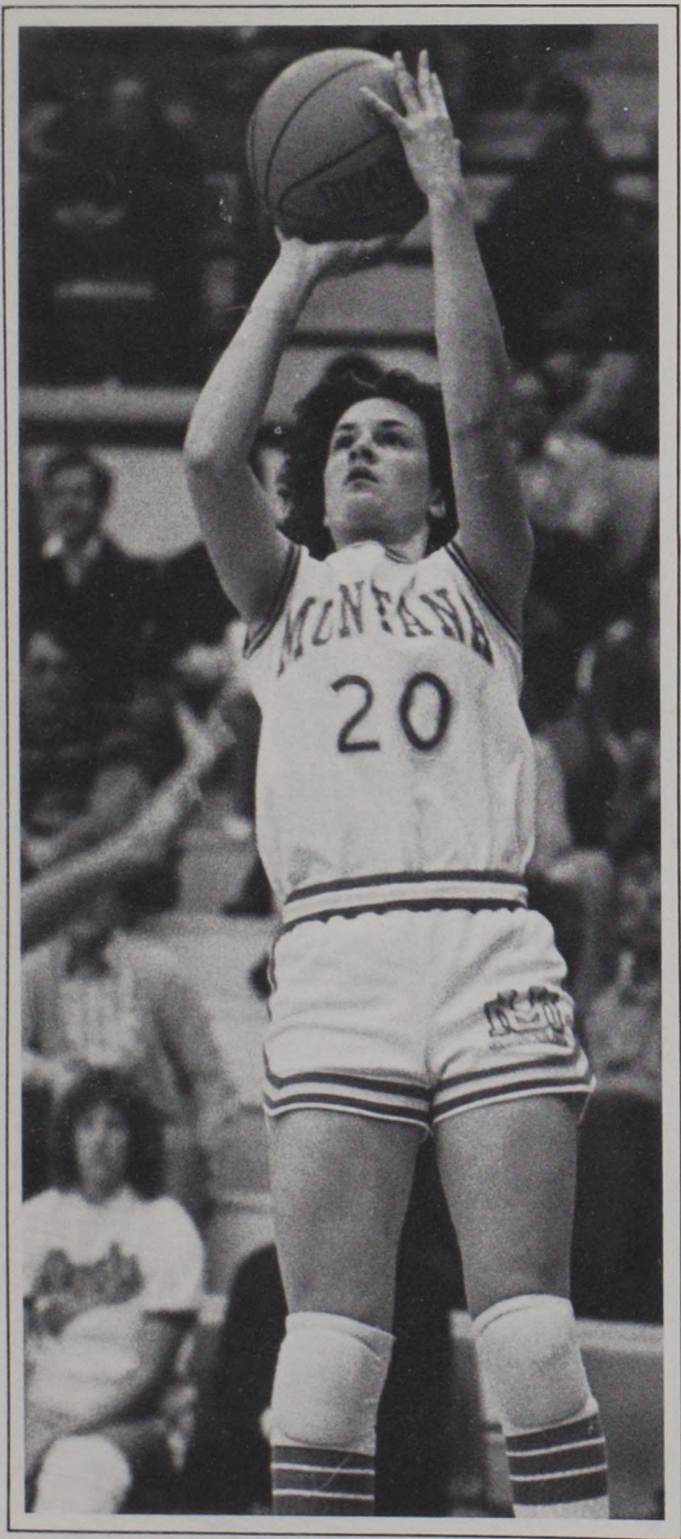
Feb. 5 in Portland; Mar. 4 in Dahlberg Arena 8:00 p.m.

Location: Portland, Ore.; Enrollment: 15,000; Nickname: Vikings; Colors: Green & White; Conference: Mountain West (first year in conf.); Athletic Director: Roy Love; SID: Larry Sellers (503) 229-4400; Head Coach: Bev Bland; 1981-82 Record: 6-23; Returning Letterwinners: 5; Returning Starters: 3; Top Returnees: Sheri VanLoo (F, 6-0, Jr., 19.4 ppg, 8.4 rpg), Karen Johnson (C, 6-1, Jr., 14.8 ppg, 8.8 rpg), Laurie Jenkins (G, 5-8, Sr., 10.0 ppg, 2.8 rpg), C. J. Sealey (1981-82 Redshirt); Top Newcomers: Alicia Hall (G-F, 5-8, So., Wenatchee, Wash.), Cindy Christensen (F, 6-0, Jr., Longview, Wash.), Carrie Czyzewski (F, 5-9, Fr., Mulwaukie, Ore.); Series: UM leads 4-3.



Future Lady Griz? UM has enjoyed constantly improving attendance in the last few seasons. Several games drew more than 1,000 fans last year.

On the opposite page: Sophomore Guard Barb Kavanagh

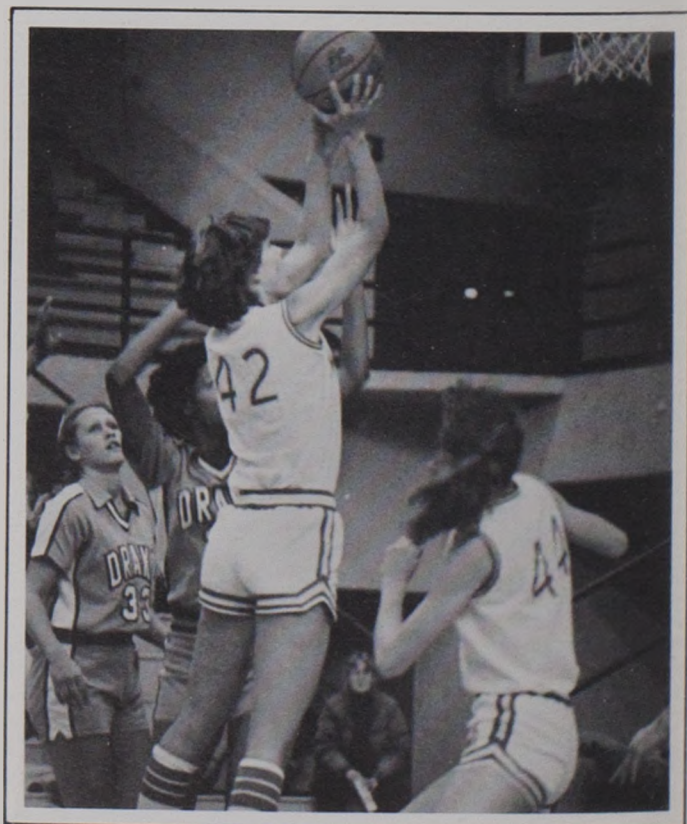


MEDIA OUTLETS

Missoulian, 502 N. Higgins, Missoula MT 59801
Great Falls Tribune, Tribune Building, Great Falls, MT 59401
Montana Standard, 25 W. Granite, Butte, MT 59701
Daily Interlake, 300 First Ave. W., Kalispell, MT 59901
Independent Record, 317 Allen, Helena, MT 59601
Ravalli Republican, 232 Main, Hamilton, MT 59804
Montana Kaimin, University of Montana, Missoula, MT 59812
KECI-TV, Drawer M, Missoula, MT 59806
KPAX-TV, P.O. Box 4827, Missoula, MT 59806
KYLT-Radio, Fairway Center, Missoula, MT 59801
KGVO-Radio, KGVO Plaza, Missoula, MT 59801
KYSS-Radio, 400 Ryman, Missoula, MT 59801
KGRZ-Radio, P.O. Box 4106, Missoula, MT 59806
KDXT-Radio, P.O. Box 4106, Missoula, MT 59806
KUFM-Radio, University of Montana, Missoula, MT 59812
Associated Press, 317 Allen, Helena, MT 59601
United Press International, P.O. Box 4595, Helena, MT 59601

LADY GRIZ ON RADIO

All Lady Griz games will be broadcast live by KYSS-Radio (95 FM) in Missoula. Sports Director Kerry O'Brien will do the play-by-play for home games.



Junior Center Doris Deden

University of Montana

The University of Montana boasts a proud tradition of academic excellence in teaching, research and service. Located in Missoula on 201 acres at the base of Mount Sentinel, UM was chartered February 17, 1893. Since then, it has grown from 50 students and seven faculty members to a present enrollment of 8,800 and about 450 full time state supported faculty positions.

Bachelor's degrees are available in 58 fields, and associate of arts degrees may be obtained in two areas. UM offers master's degrees in 54 programs and doctoral degrees in 13.

The College of Arts and Sciences is the core of the University. It includes a full range of programs and courses in the life sciences, physical sciences, social sciences and humanities.

Seven professional schools complete the academic program—Business Administration, Fine Arts, Journalism, Education, Forestry, Law and Pharmacy and Allied Health Sciences.

Missoula is in the midst of an area noted for its spectacular scenery and recreational opportunities. It is within easy driving distance of four wilderness areas and Glacier and Yellowstone National Parks. The natural surroundings offer excellent opportunities for hunting, fishing, backpacking, river floating, camping and other recreational pursuits. Two excellent winter ski areas are within minutes of the University, and several others are only a couple of hours away by car. UM owns and operates a golf course near the campus.

Downtown Missoula is within blocks of the University and is easily accessible to UM students. Other parts of the city can be reached by using Mountain Line, the city's mass transit system.



1982-83 LADY GRIZ BASKETBALL SCHEDULE

Date	Opponent	Time
November		
20	WASHINGTON STATE	7:30
22	CARROLL COLLEGE	7:30
23	COLLEGE OF GREAT FALLS	7:30
29	EASTERN MONTANA	5:05
30	Montana Tech	7:30
December		
3-5	Cal Invitational (California, University of Arkansas, UM)	8:30
6	University of Pacific	8:30
11	BRIGHAM YOUNG UNIVERSITY	7:30
17	Washington State	8:30
January		
4-5	LADY GRIZ INSURANCE CLASSIC III (Utah State, Wyoming, Cal State- Fullerton, UM)	6:30 & 8:30
8	University of Washington	8:30
14	Weber St.*	7:30
15	Idaho State*	5:15
21	Montana State*	7:30
28	UNIVERSITY OF IDAHO*	7:30
29	BOISE STATE*	5:05
February		
3	Eastern Washington*	8:30
5	Portland State*	8:30
11	WEBER STATE*	7:30
12	IDAHO STATE*	7:30
18	MONTANA STATE*	7:30
24	University of Idaho*	8:30
24	Boise State*	7:30
March		
4	PORTLAND STATE*	8:00
6	EASTERN WASHINGTON*	2:00
11-12	Mountain West Tournament (at Conference Champion)	TBA

HOME GAMES IN BOLD

* Mountain West Conference Game

All Times Mountain Standard