

University of Montana

## ScholarWorks at University of Montana

---

Grizzly Basketball Yearbook, 1955-1992

University of Montana Publications

---

1-1-1971

### Grizzly Basketball Yearbook, 1971-1972

University of Montana (Missoula, Mont. : 1965-1994). Athletics Department

Follow this and additional works at: [https://scholarworks.umt.edu/grizzlybasketball\\_yearbooks\\_asc](https://scholarworks.umt.edu/grizzlybasketball_yearbooks_asc)

**Let us know how access to this document benefits you.**

---

#### Recommended Citation

University of Montana (Missoula, Mont. : 1965-1994). Athletics Department, "Grizzly Basketball Yearbook, 1971-1972" (1971). *Grizzly Basketball Yearbook, 1955-1992*. 6.

[https://scholarworks.umt.edu/grizzlybasketball\\_yearbooks\\_asc/6](https://scholarworks.umt.edu/grizzlybasketball_yearbooks_asc/6)

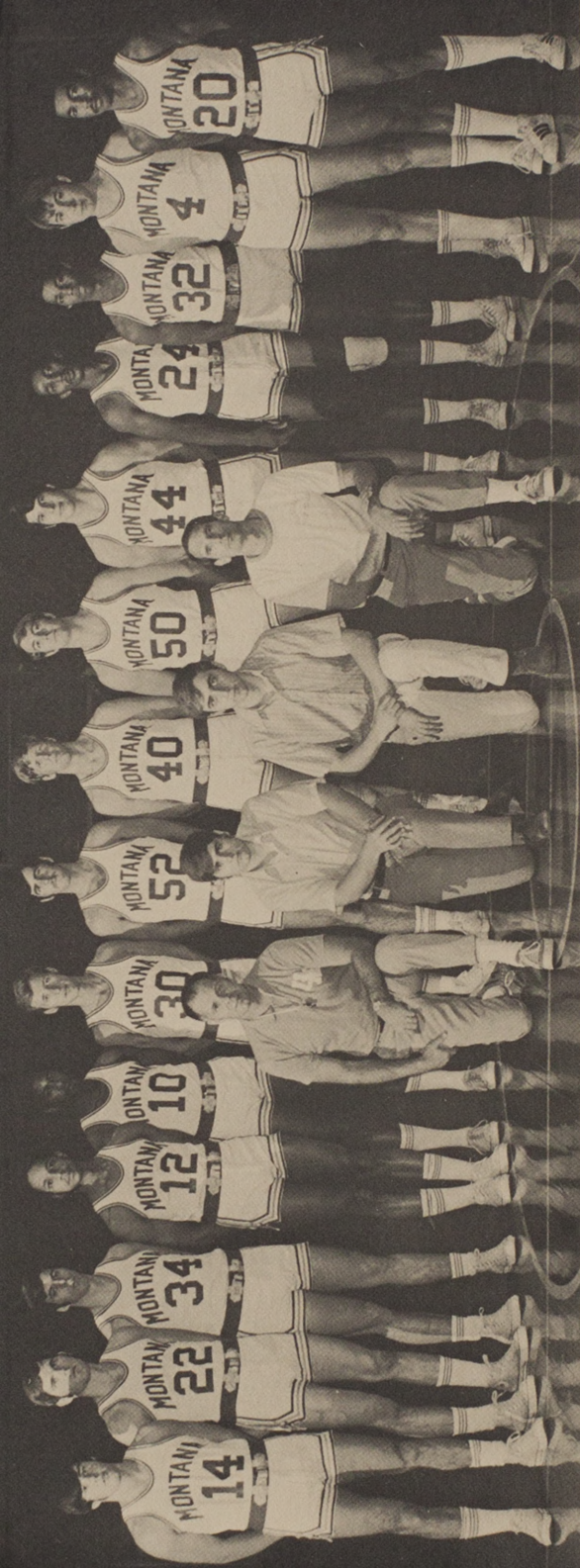
This Yearbook is brought to you for free and open access by the University of Montana Publications at ScholarWorks at University of Montana. It has been accepted for inclusion in Grizzly Basketball Yearbook, 1955-1992 by an authorized administrator of ScholarWorks at University of Montana. For more information, please contact [scholarworks@mso.umt.edu](mailto:scholarworks@mso.umt.edu).

University  
of Montana  
1971-72

BASKETBALL  
GRIZZLY



Missoula, Montana



## 1971-72 Grizzlies

Number	Name	Ht.	Wt.	Pos.	Experience	Hometown	High School
W 53	Chris Anderson	6-6½	212	C	Frosh	Olympia, Washington	Olympia H.S.
52	William Bascus	6-4½	205	G-F	2 V	Brawley, Calif.	Union H.S.
10 11	Scott Hollenbeck	6-5½	209	F	Frosh	Spokane, Washington	Mead H.S.
44 45	Ray Howard	6-7½	230	C	2 V	Great Falls, Mont.	Great Falls Public
40 41	Michael Hubbard	6-2	202	G-F	Frosh	Seattle, Washington	Shoreline H.S.
34 35	Blake Lyman	6-2	183	G-F	Frosh	Missoula, Mont.	Sentinel H.S.
4 5	Michael Murray	5-11	170	G	J.C.	Seattle, Washington	*Highline CC.
20 21	Dale Parker	6-5	195	F	J.C.	Galeton, Colo.	*Grays Harbor CC
14 15	Kevin Rocheleau	5-9½	172	G	Frosh	Missoula, Mont.	Sentinel H.S.
22 23	Robin Selvig	6-1	173	G	Frosh	Outlook, Mont.	Outlook H.S.
50 51	Earl Tye	6-6½	218	F	1 V	Central Point, Oregon	Crater H.S.
24 25	Michael Vernon	6-4	190	G-F	1 V	Oakland, Calif.	Oakland Tech
32 33	Casey Walker	6-3	171	F	Squad	Calipatria, Calif.	Calipatria H.S.
12 13	Virgil Owens	6-3	180	F-G	J.C.	Seattle, Washington	Garfield H.S.

HEAD COACH:

Jud Heathcote

ASSISTANT COACH: Jim Brandenburg

MANAGERS: Don Ryan

Dennis Murphy

\*Community College

# The Year of the Running Grizzly

New University of Montana basketball coach Jud Heathcote has been coaching fast break basketball since he began his career 21 years ago and this year will be no exception. The 1971-72 Grizzlies will run and run and run some more to try to improve on last year's 8-16 record.

Three starters and an alternate from last year's team and two community college transfers form the nucleus for this year's team.

Ray Howard, a senior 6-8 center from Great Falls, is a strong man both defensively and offensively. He led the Grizzlies in scoring (13.8), field goal percentage (.683) and rebounding (11.2),

and played his best ball toward the end of the season.

Joining him from last year's starting five will be guard Mike Vernon and forward Willie Bascus. Vernon's 12.9 point-per-game average last year left him tied for second with Don Wetzel, who graduated.

Also lost to graduation were 6-8 center Lonzo Lewis, 6-6 forward Howard Clark and 5-10 guard Mike Heroux.

A sometime starter last year, 6-7 junior center Earl Tye, will give the Grizzlies added strength in the middle.

Heathcote has imported two community college athletes from Washington who, judging from their past performances, should provide some scoring punch for the Grizzlies. Dale Parker, a 6-5 forward from Grays Harbor, led the Washington community college circuit in scoring last year with 26 points a game.

Not far behind him, with a 21 point average, was Mike Murray from Highline Community College in Seattle.

Adding veteran strength will be 6-3 junior forward Casey Walker, a squad member last year.

Up from last year's 11-7 freshman team are six talented sophomores led by 6-2½ guard Robin Selvig, 6-6 forward Scott Hollenbeck and 5-10 guard Kevin Rocheleau. Selvig hit 17.9 points per game last year, Rocheleau 17.8 and Hollenbeck 13.6.

## Athletic Telephone Directory

### Office\*

JACK SWARTHOUT, Athletic Director, Head Football Coach	243-5331
EARL MARTELL, Athletic Business Manager	243-4051
GARY HUGHES, Ticket Manager	243-4051
HAL MATHEW, Sports Information Director	243-2522
CELA BURHAM, Head Secretary	243-5331
JUD HEATHCOTE, Head Basketball Coach	243-5331
JIM BRANDENBURG, Assistant Basketball Coach	243-5331
JACK ELWAY, First Assistant, Football	243-5331
BILL BETCHER, Assistant, Football	243-5331
RON NORD, Assistant, Football; Golf Coach	243-5331
CHARLEY ARMEY, Assistant Football Coach	243-5331
BOB BEERS, Freshman Football, Baseball Coach	243-5331
HARLEY LEWIS, Track Coach	243-5331
FRED STETSON, Swim Coach	243-2763
LARRY MILLER, Wrestling Coach	243-5331
RUSTY LYONS, Ski Coach	243-5331
JERRY DOWNEY, Assistant Track Coach	243-5331
NASE RHINEHART, Head Trainer	243-2652
DR. ROBERT CURRY, Team Physician	243-2122
RUPERT HOLLAND, Equipment Manager	243-4351
BUTLER EITEL, Director of Bands	243-4843

\*Area Code for Missoula is 406.

## Press Outlets

Jeff Herman, Sports Editor, The Missoulian  
Sports Editor, the Montana Kaimin, UM  
Sports Director, KGVO Radio-TV  
Sports Director, KYLT Radio  
John T. Campbell, Sports Director, KYSS Radio  
Sports Director, KGMV Radio  
Sports Director, KUFM Radio, UM  
Sports Editor The Anaconda Standard, 59711  
Sports Editor, The Billings Gazette, 59101  
Sports Editor, The Bozeman Daily Chronicle, 59715  
Sports Editor, The Butte Montana Standard, 59701  
Sports Editor, The Great Falls Tribune, 59401  
Sports Editor, The Helena Independent-Record, 59601  
Sports Editor, The Kalispell Daily Inter Lake, 59901  
Sports Editor, The Livingston Enterprise, 59047

# Basketball Staff

## Head Coach Jud Heathcote

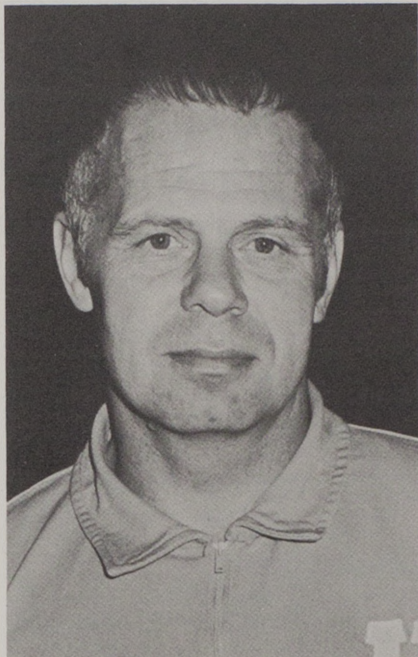
Jud Heathcote comes to the University of Montana from Washington State University where he was coordinator of the freshman-varsity basketball program the past two years. Prior to that he spent five years coaching the WSU freshmen to an enviable 99 wins against nine losses, six of which came in the same season.

Heathcote played basketball at WSU from 1946-49 and was an assistant at WSU during the 1949-50 season. He then went to West Valley High School in Spokane as head basketball coach in the fall of 1950. From that year until returning to Washington State in 1964 he won five league championships.

Heathcote has coached fast break basketball throughout his career and will implement this exciting brand of ball at UM this year. He inherits three starters from the 1970-71 team that tied for fourth in the Big Sky Conference. Heathcote also has two junior college transfers and two high scoring guards from last year's freshman team.

Heathcote recruited a strong freshman team that will enable Montana to establish a first rate basketball program in the coming years.

He is a native of Port Orchard, Wash., He and his wife Beverly have three children, Carla, Jerry and Barbie.



## Assistant Coach Jim Brandenburg

Last year Jim Brandenburg served as assistant varsity basketball coach and coordinator of the varsity-frosh program at UM. During the 1971-72 season he will coach the freshman squad and serve as assistant to new head coach Jud Heathcote. Brandenburg guided Flathead Valley Community College to a 23-4 season in 1969-70 and had a 171-46 record while coaching at Luther Burbank High School in Texas.

Brandenburg received a Master's degree in Education from Colorado State University in 1966. His wife's name is Jan and they have three children.



# Administration

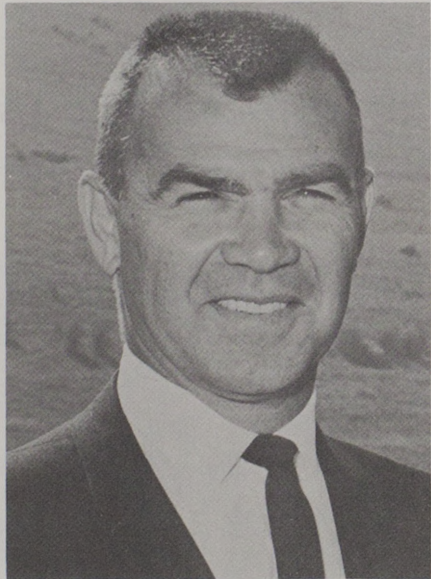
## President Robert T. Pantzer

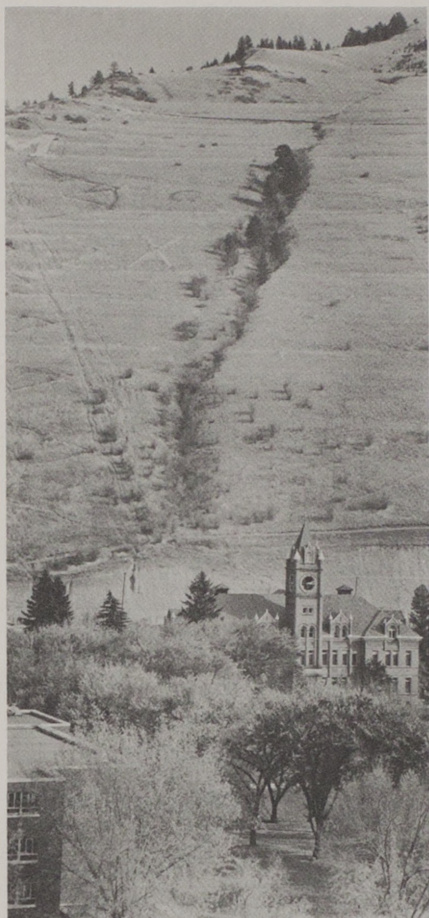
Robert T. Pantzer was appointed President of the University of Montana on December 16, 1966 after serving five months as acting president. He was financial vice-president under President Robert Johns and is a professor of business administration. Pantzer has been with the University since 1957. He received his B.A. in business administration from the University of Montana in 1940 and served 42 months overseas during World War II. Pantzer was discharged as a United States Army Major and was awarded the bronze star for meritorious service in the East Indies. Pantzer returned to his alma mater and graduated from the University of Montana Law School in 1947. He served as a county attorney in Chester, Montana from 1947-50 and practiced law in Livingston before returning to the Missoula University. One of the first important steps Pantzer took as president was to revitalize the athletic program. He appointed Jack Swarthout as head football coach and athletic director only a few short weeks after assuming his duties as president. President Pantzer and his wife Ann have three children.



## Athletic Director Jack Swarthout

Jack Swarthout became the University of Montana athletic director and head football coach in 1967 and already has achieved something no other coach has achieved in the 73-year history of the sport at this school. He is the first man to guide a UM grid team to more than seven wins in a season; first to coach an undefeated Montana football team and conference championship squad; first to take a Grizzly team to a bowl game and first man to coach a Montana team to a national ranking. Swarthout's record prior to this season was 29-11. Swarthout was born in Prosser, Wash., on February 23, 1920 and was a football, basketball and baseball letterman in high school. He attended the University of Montana and competed for the Grizzly athletic teams. Swarthout was a student of U.S. Senate Majority Leader Mike Mansfield and received his B.A. degree in political science in 1942. He served four years in the armed services as a lieutenant in the airborne infantry. The UM mentor coached at Hoquiam High School in Washington and then served three years as an assistant coach to Darrell Royal at the universities of Washington and Texas. Swarthout coached at Olympia High School and compiled a 50-14-2 record in seven seasons. He is married and has four children.





**Mt. Sentinel and Main Hall**

# University of Montana

**Location**—Western Montana, 100 miles from the western border and 120 miles north of southern state border; 100 miles south of Glacier National Park.

**On U.S. Highway 10 and Interstate 91.**

**Enrollment**, 8,700 (fall estimate)

**President**—Robert T. Pantzer

**School Colors**—Copper, Silver and Gold

**Nickname**—Grizzlies, Tips, Freshman

**Cubs**

**Athletic Facilities**—Dornblaser Stadium (11,500) and Harry Adams Field House (6,500)

**Conference**—Big Sky Athletic Conference

**College of Arts and Sciences** plus seven professional schools (business administration, education, fine arts, forestry, journalism, law and pharmacy)

**Chartered**—Feb. 17, 1893 by Third Legislative Assembly of Montana

**Faculty**—More than 400 full-time instructional staff members (better than 50 per cent Ph.D.'s)

**Campus**—201-acre main campus located at base of Mt. Sentinel with more than 40 buildings; 154-acre family housing complex and nine-hole golf course south of campus; 296 acres of research facilities at Fort Missoula south and west of main campus; 624 acres on Mt. Sentinel; 27,000-acre experimental forest 35 miles east of main campus; an 168-acre biological experiment station on Flathead Lake 90 miles north of campus.

**Transportation Services**—Northwest and Frontier Airlines; Burlington Northern Railway and Greyhound and Intermountain Bus Lines.

**For further information about the University of Montana, write:**

Information Services  
University of Montana



**Science Complex**

# 1970-71 University of Montana Basketball Statistics

## ALL GAMES 8-16

G	Player	FG-FGA	Pct.	FT-FTA	Pct.	Sh.M	Reb.	Avg.	Pf.	A	Pts.	Avg.
24	Howard	123-263	.468	84-123	.683	179	268	11.2	91	20	332	13.8
23	Vernon	122-312	.391	50-75	.666	215	88	3.8	34	25	298	12.9
24	Wetzel	129-305	.423	52-80	.650	204	61	2.5	71	20	310	12.9
24	Lewis	103-239	.431	84-134	.627	186	172	7.2	93	12	290	12.1
18	Bascus	60-153	.392	29-56	.518	119	120	6.7	56	13	143	7.9
22	Clark	40-106	.377	52-83	.627	97	134	6.1	65	11	142	6.6
24	Tye	58-129	.450	24-42	.571	89	95	4.0	43	13	140	5.8
13	Johnson	11-20	.550	15-25	.600	19	12	.9	10	4	37	2.8
5	Judd	6-23	.261	2-2	1.000	17	1	.20	3	1	14	2.8
16	Nord	15-59	.254	12-30	.400	62	16	1.0	11	8	42	2.6
13	Heroux	11-32	.344	9-14	.643	26	6	.43	14	6	30	2.3
7	Chapman	3-7	.429	6-7	.857	5	10	1.3	5	1	12	1.6
4	Walker	2-6	.333	0-1	.000	5	6	1.5	2	0	4	1.0
<b>UM Totals</b>		<b>690-1653</b>	<b>.417</b>	<b>416-667</b>	<b>.624</b>	<b>1214</b>	<b>1181</b>	<b>49.2</b>	<b>500</b>	<b>147</b>	<b>1798</b>	<b>74.9</b>
<b>Opp. Totals</b>		<b>766-1719</b>	<b>.456</b>	<b>463-678</b>	<b>.683</b>	<b>1168</b>	<b>1144</b>	<b>47.7</b>	<b>493</b>	<b>187</b>	<b>2012</b>	<b>83.8</b>

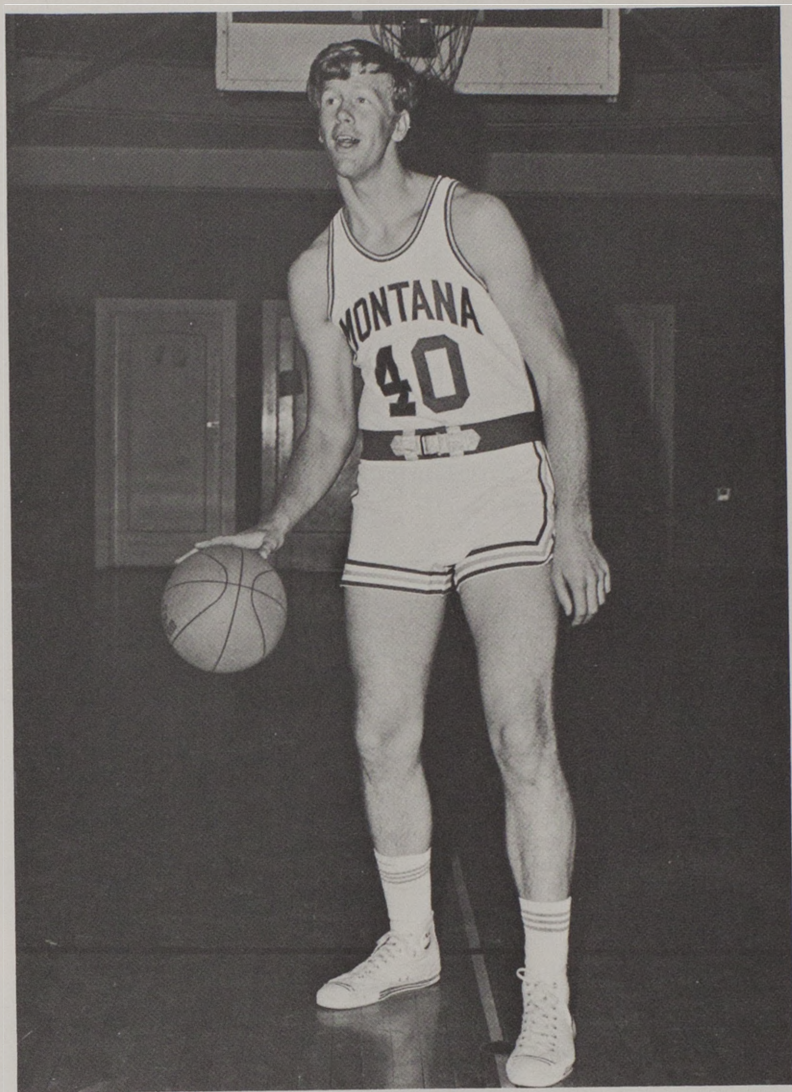
## CONFERENCE 6-8

14	Howard	79-156	.506	55-75	.733	79	165	11.8	54	11	213	15.2
14	Vernon	83-200	.415	39-53	.736	131	106	7.6	21	12	205	14.6
14	Lewis	68-142	.479	45-74	.608	74	100	7.1	50	7	181	12.9
14	Wetzel	64-161	.398	37-51	.726	111	36	2.6	38	12	165	11.8
14	Bascus	44-108	.407	22-38	.579	80	68	4.9	45	9	101	7.2
12	Clark	29-63	.460	34-55	.618	53	72	6.0	36	7	83	6.9
14	Tye	30-68	.441	8-18	.444	48	45	3.2	17	8	68	4.9
7	Johnson	7-10	.700	9-16	.563	10	6	.9	7	3	25	3.6
2	Judd	5-15	.333	2-2	1.000	17	1	.3	3	1	14	2.8
9	Nord	7-28	.250	10-21	.476	32	8	.9	3	3	24	2.7
4	Chapman	2-5	.400	6-7	.857	4	7	1.7	5	1	10	2.5
6	Heroux	3-8	.375	1-1	1.000	5	1	.2	6	2	7	1.7
4	Walker	2-6	.333	0-1	.000	5	6	1.5	2	0	4	1.0
<b>UM Totals</b>		<b>422-903</b>	<b>.467</b>	<b>267-415</b>	<b>.643</b>	<b>629</b>	<b>726</b>	<b>51.9</b>	<b>297</b>	<b>78</b>	<b>1111</b>	<b>79.4</b>
<b>Opp. Totals</b>		<b>443-1003</b>	<b>.442</b>	<b>268-409</b>	<b>.655</b>	<b>701</b>	<b>707</b>	<b>50.5</b>	<b>321</b>	<b>99</b>	<b>1151</b>	<b>82.2</b>

## SCORES

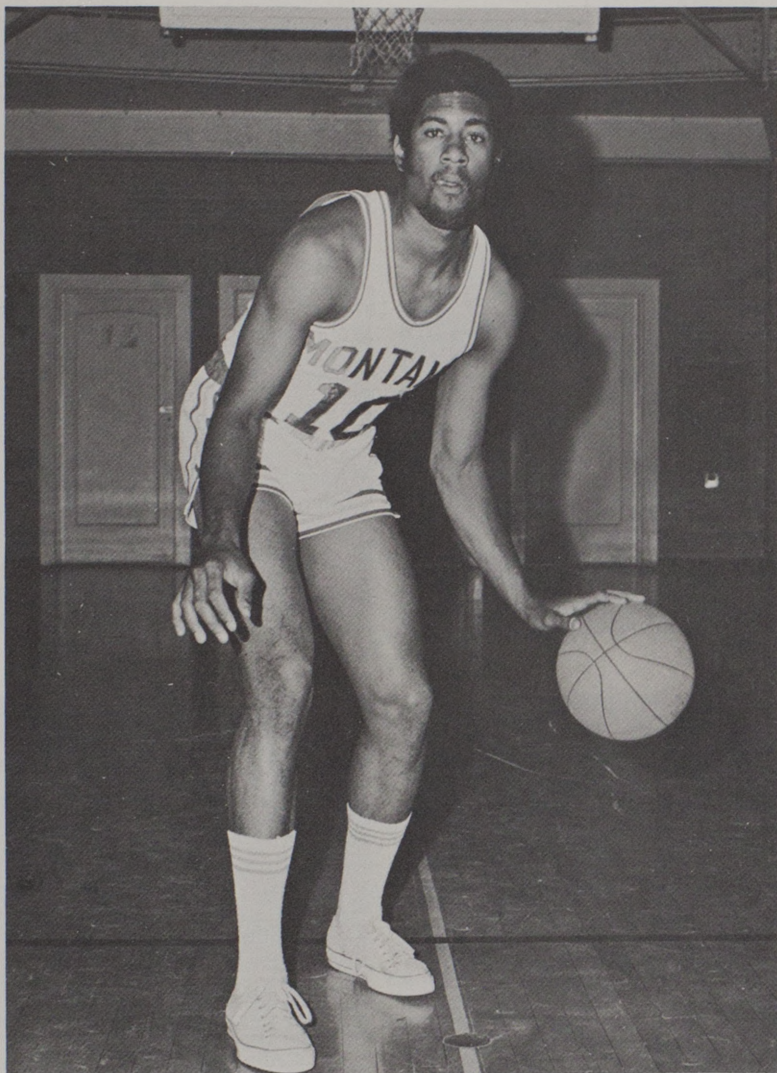
UM	Opponent	Opp.	Where	Top UM Scorer	Top UM Rebounder
68	Augustana	82	Sioux Falls	Wetzel 16	Howard 16
69	South Dakota	65	Vermillion	Wetzel/Vernon 14	Clark 12
63	Washington State	80	Pullman	Wetzel 13	Tye 11
67	Washington	86	Seattle	Wetzel 17	Howard 12
69	Washington State	81	Missoula	Wetzel 15	Howard 10
72	Northern Colorado	63	Missoula	Wetzel 18	Howard 13
64	Weber	85	Ogden	Lewis 19	Lewis 9
72	Northern Colorado	63	Flagstaff	Lewis 16	Howard 20
82	Montana State	85	Missoula	Wetzel 21	Howard 19
71	Puget Sound		Missoula	Wetzel 21	Howard 17
71	Gonzaga	81	Spokane	Vernon 22	Lewis 12
60	Idaho	82	Moscow	Lewis 13	Bascus 9
78	Athletes in Action*	85	Missoula	Wetzel 25	Howard 10
74	Montana State	69	Bozeman	Vernon 26	Tye 11
79	Oral Roberts	111	Missoula	Lewis 20	Bascus 11
50	Puget Sound	89	Tacoma	Vernon 14	Tye 8
79	Portland State	93	Portland	Wetzel 19	Howard 12
82	Gonzaga	71	Missoula	Tye 15	Lewis 11
98	Idaho	66	Missoula	Howard 25	Howard 10
74	Boise State	98	Boise	Howard 13	Howard 15
77	Idaho State	109	Pocatello	Bascus 14	Howard 11
104	Boise State	85	Missoula	Wetzel 28	Howard 15
85	Idaho State	64	Missoula	Vernon 31	Lewis 16
57	Weber State	82	Missoula	Howard 23	Howard/Clark 8
109	Northern Arizona	92	Missoula	Howard 27	Howard 21

\*Exhibition game and does not go in stats or win-loss column.



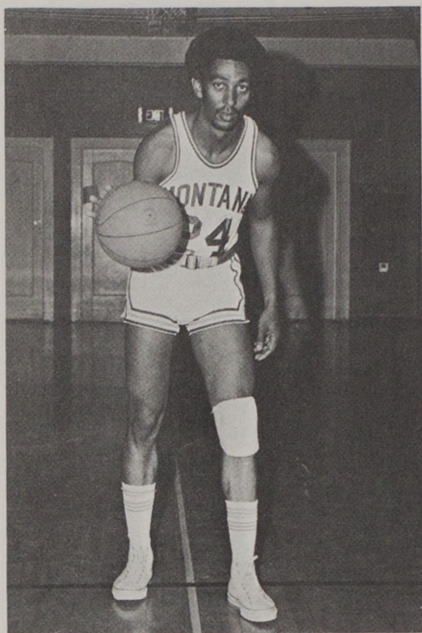
## Ray Howard

Montana's high scorer and top rebounder of the 1970-71 season, he returns to solidify the post position for the 1971-72 Grizzlies. Splitting the nets with 47% accuracy, he averaged 13.8 points per game. Howard also took down 11.2 rebounds per contest. He came on very strong at the end of the season and was the top rebounder in six of the last seven games. He also was high scorer in four of these. He is a Montana native and played his high school ball for Great Falls High.



## Willie Bascus

Bascus is in his third season at UM. The native of Brawley, Calif. is known for his remarkable jumping ability, as witnessed by his being the third high rebounder on the 1970-71 team despite standing only 6-4. He scored 143 points and had 120 rebounds last season.

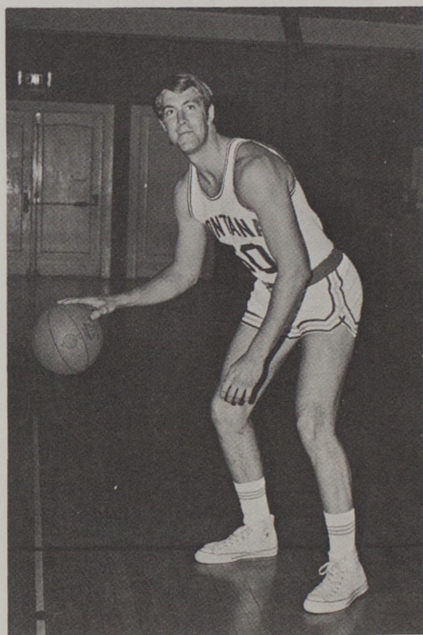


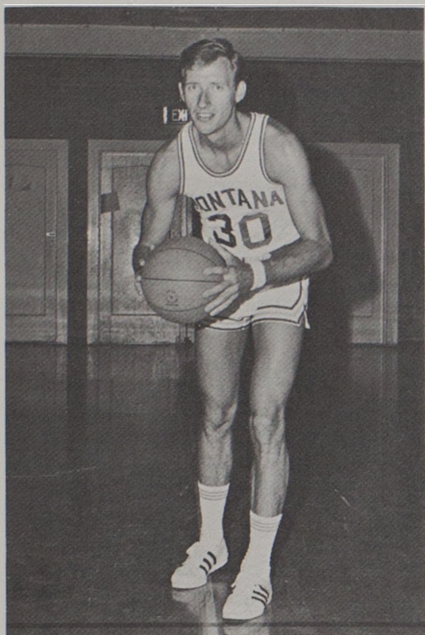
### Mike Vernon

Vernon is expected to be a valuable asset to this year's Grizzly basketball team. Last season as a junior he was Montana's second leading scorer with just under 13 points per game. He came to UM following a very successful season at Flathead Valley Community College where he started on their team that won 23 and lost 4.

### Earl Tye

Tye was a spot starter at forward for Montana throughout the 1970-71 season. He played in all 24 games averaging nearly six points a game and he pulled down 95 rebounds. He was Montana's top rebounder in three games. He is from Central Point, Ore.





**Dale Parker**

Parker transferred to UM from Grays Harbor Community College where he averaged 26 points and led the conference in scoring. As a 6-5 forward he will play an important role in the fast break offense Montana will employ. Parker is from Galeton, Colorado.

**Mike Murray**

Murray moves into a starting berth at UM after transferring from Highline Community College in Seattle. At Highline he averaged over 21 points a game. At 5-11 he is the quickest man on the Montana roster. He is a native of Seattle, Wash.



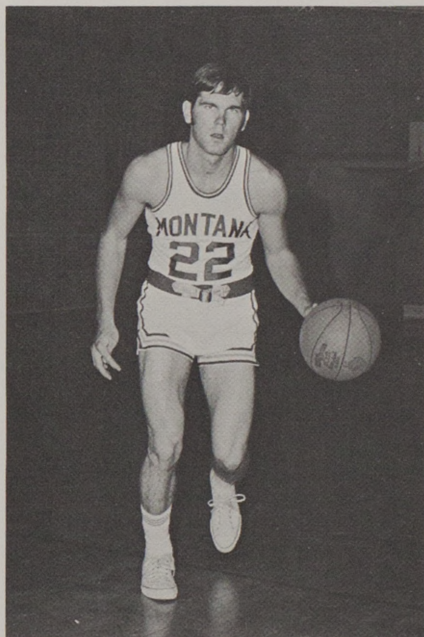


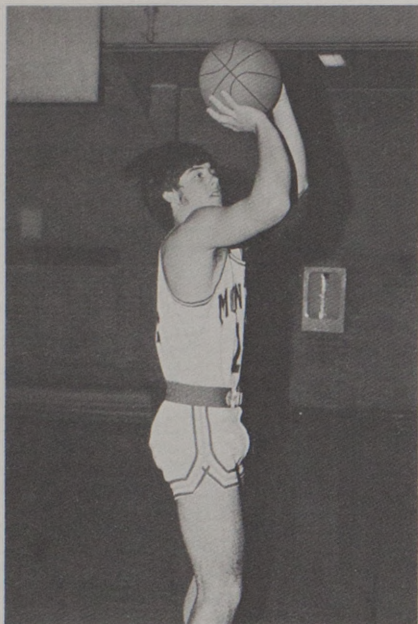
### Blake Lyman

In high school Lyman combined with Rocheleau to make Missoula Sentinel a real power. Last season on the freshman squad he scored 13.2 per game and gathered in 90 rebounds. His career ambition is to coach.

### Robin Selvig

Selvig was a high school all-stater at Outlook, Mont. Last season he was the leading scorer on the high-scoring freshman squad. He pumped in 49% of his shots from the field from his guard slot and averaged 17.9 points. He holds the frosh single game scoring record of 45 points.



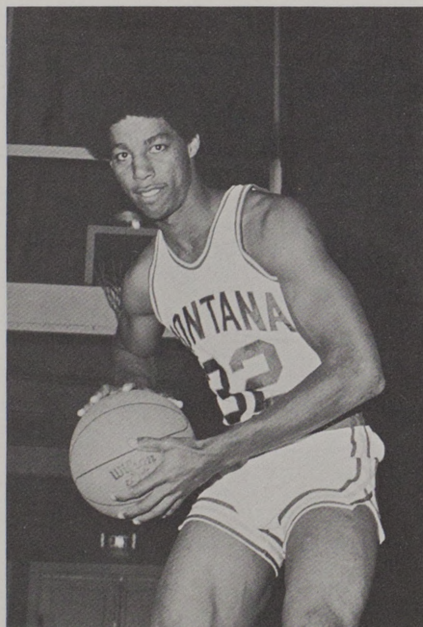


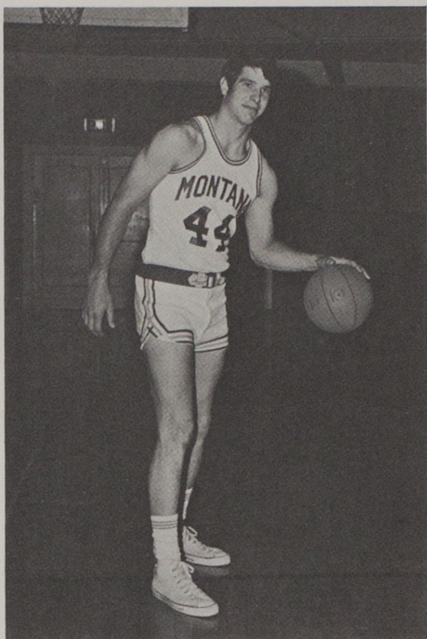
### Kevin Rocheleau

Rocheleau, a quick, small guard, was second leading scorer on the freshman squad last season with an average of 17.8 points per game. He was an all-stater in Montana AA basketball circles as a prep star for Missoula Sentinel High School.

### Casey Walker

Walker, a sophomore, was red-shirted last year after playing on the Grizzly freshman team during the 1969-70 season. He is a forward on this year's team. He was high school All-American at Calipat High School in Calipatria, Calif., where he also participated in football and track.



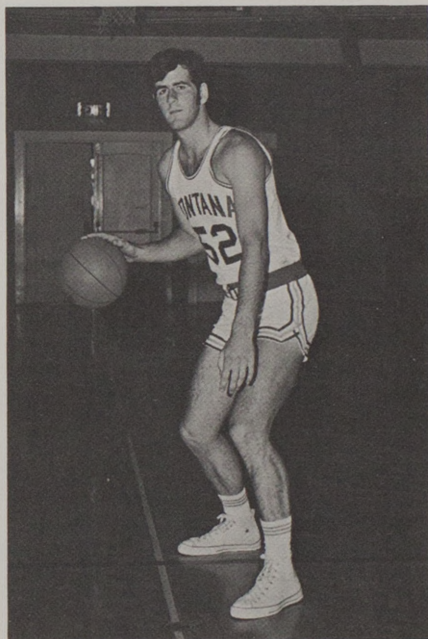


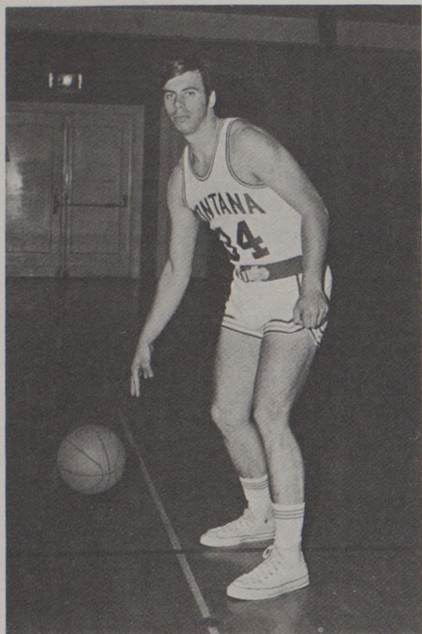
### Scott Hollenbeck

Hollenbeck is one of six of last year's freshman recruits that is on the 1971-72 roster. He played his high school ball in Spokane, Wash. As a freshman he averaged 13.6 points per game and tied for the rebound leadership with 220 take-downs.

### Chris Anderson

Anderson is another of the frosh 1970-71 basketballers on the current varsity. The 6-7 center averaged 15.6 points and tied with Hollenbeck as leading rebounder on the frosh team. He was high point man five times. His home town is Olympia, Wash.



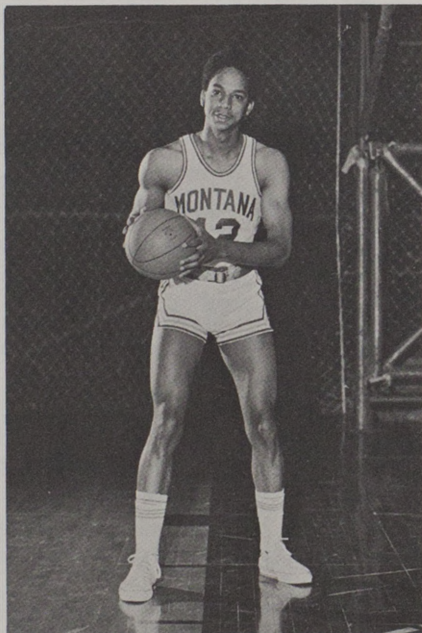


### Mike Hubbard

Hubbard is the sixth member from the 1970-71 freshman squad to move up to the varsity for the 1971-72 season. As a freshman he averaged in double figures connecting on 56% of his shots from the field. He is from Seattle, Wash.

### Virgil Owens

Owens transferred to the University of Montana from Highline Community College in Washington where he played on that school's basketball team as did Mike Murray. Owens tried out for the Grizzly squad under his own initiative. The walk-on from Seattle made good in his bid to make the Montana roster. The forward-guard is an art major.



# 1971-72 Opponents

## Oregon

**Wednesday, Dec. 1 at Eugene's McArthur Court (10,000).**

Ducks (Webfoots); Lemon Yellow and Emerald Green. Pacific 8 Conference. 15,000 students. Eugene, Oregon. Athletic director Norv Ritchey. Publicity, Hal Cowan.

Coach Dick Harter, won 104, lost 53.

1970-71 record—won 17, lost 9. Series record against Montana—UM 3, UO 14.

Lettermen returning: Rusty Blair, Doug Little, Ken Strand, Clyde Crawford. Lettermen lost: Stan Love, Larry Holliday, Lenny Jackson, Bill Drozdiak, Rick Brosterhouse, Al Carlson, Steve Shaw, Rod Wulff.

## Washington State

**Friday, Dec. 3 at Pullman's Bohler Gym (5,000).**

Cougars; Crimson and Gray. Pacific 8 Conference. 14,500 students. Pullman, Washington. Athletic director Ray Nagel. Publicity, Mike Wilson.

Coach Bob Greenwood, first year.

1970-71 record—won 12, lost 14. Series record against Montana—UM 22, WSU 68.

Lettermen returning: Dan Steward, Mike Dolven, Jim Nielsen. Lettermen lost: Jim Meredith, Dennis Hogg, Mike Gomez, Jim Smiley.

## Wyoming

**Tuesday, Dec. 7 at Laramie's Memorial Fieldhouse (11,000).**

Cowboys; Brown and Yellow. Western Athletic Conference. 8,400 students. Laramie, Wyoming. Athletic Director Glenn J. Jacoby. Publicity, Bill Young.

Coach Bill Strannigan, won 158, lost 156.

1970-71 record—won 10, lost 15. Series record against Montana—UM 11, UW 17.

Lettermen returning: Franklin Irvin, Rod Penner, Ted Roney. Lettermen lost: Roy Wilson, Willie Roberson, Steve Mountjoy, Brad Smith, Jerry Brucks.

## Midwestern

**Monday, Dec. 13 at Missoula.**

Indians; Maroon and Gold. District Eight Conference. 4,181 students. Wichita Falls, Texas. Athletic Director Gerald Stockton. Publicity, D. L. Ligon.

Coach Gerald Stockton, won 12, lost 16.

1970-71 record—won 12, lost 16. No previous games against Montana.

Lettermen returning: Bill Mohon, Jon Bennet, Frank Farnsworth, David Hanebutt, Jimmy Burg. Lettermen lost: Kenny Bryant, Herbert Johnson, Russell Tautenhahn.

## Daffodil Classic

**Friday, Dec. 10, and Saturday, Dec. 11 at Tacoma's Memorial Field-house (6,000). UM plays LA State in the first round.**

**Los Angeles State**—Diablos; Black and Gold. Los Angeles, California. Athletic director Homer Beatty. Publicity, Frank Candida.

**St. Mary's**—Gaels; Red and Blue. St. Mary's, California. Athletic director Larry Albus. Publicity, Hec Hancock.

**Puget Sound**—Loggers; Green, Gold and Blue. Tacoma, Washington. Athletic director Doug McArthur. Publicity, Roger Peterson.

## South Dakota

**Friday, Dec. 17 at Missoula.**

Coyotes; Vermillion and White. North Central Conference. 5,600 students. Vermillion, South Dakota. Athletic director Carl Miller. Publicity, Bud Brown.

Coach Bob Mulcahy, won 52, lost 50.

1970-71 record—won 11, lost 14. Series record against Montana—UM 1, USD 0.

Lettermen returning: Dick Authier, Mike Bird, Rollie Borth, Charles Cutler, Brent Fahnestock, Chuck Iverson, Doug Moody, Steve Moses, Tom Resner, Bill Utecht, Mark Wiedenfeld, Tom Zimmerman. Lettermen lost: Chuck Schmidt.

## California, Santa Barbara

**Wednesday, Dec. 22 at Missoula**

Gauchos; Blue and Gold. Pacific Coast Athletic Association. 13,600 students. Santa Barbara, California. Athletic director Jack C. Curtice. Publicity, Donn R. Bernstein.

Coach Ralph Barkey, won 68, lost 62.

1970-71 record—won 20, lost 6. Series record against Montana—UM 0, UC 1.

Lettermen returning: Ron Allen, Jim Edmond, Earl Frazier, Steve Haskett, Dennis Rector, Steve Rockhold, Bob Schacter, Keith Shumaker, John Tschogl. Lettermen lost: Mike McGory, Doug Rex.

## Portland State

**Thursday, Dec. 30 at Missoula.**

Vikings; Green and White. Independent. 12,000 students. Portland, Oregon. Athletic director J. Neil "Skip" Stahley. Publicity, Larry Sellers.

Coach Marion Pericin, won 81, lost 77.

1970-71 record—won 18, lost 8. Series record against Montana—UM 3, PSU 4.

Lettermen returning: Charles Stoudamire, Jerry Stephens, Willie Stoudamire, Rick Korte, Leo Franz, Myron Larson. Lettermen lost: Moses Taylor, Rich Grady, Bruce Salisbury, Craig West, Chris Turner, John Oreskovich.

## Idaho State

**Friday, Jan. 7 at Missoula and Friday, Feb. 25 at Pocatello's Asisu Minidome (12,000).**

Bengals; Orange and Black. Big Sky Conference. 8,500 students. Pocatello, Idaho. Athletic director Dubby Holt. Publicity, Glenn Alford. Coach Jim Killingsworth, first year.

1970-71 record—won 9, lost 15. Series record against Montana—UM 33, ISU 17.

## Boise State

**Saturday, Jan. 8 at Missoula and Saturday, Feb. 26 at Boise's Bronco Gymnasium (3,600).**

Broncs; Blue and Orange. Big Sky Conference. 8,400 students. Boise, Idaho. Athletic director Lyle Smith. Publicity, Jim Faucher.

Coach Murray Satterfield, won 49, lost 32.

1970-71 record—won 10, lost 16. Series record against Montana—UM 1, BS 2.

Lettermen returning: Bill Barnes, Greg Bunn, Steve Larson, Ron Maxwell, Steve Wallace. Lettermen lost: Ron Austin, Marty Morin.

## Montana State

**Saturday, Jan. 15 at Bozeman's Fieldhouse (10,000), and Monday, Jan. 24 at Missoula.**

Bobcats; Blue and Gold. Big Sky Conference. 8,400 students. Bozeman, Montana. Athletic director Tom Parac. Publicity, Ken Nicholson.

Coach Gary Hulst, won 17, lost 35.

1970-71 record—won 13, lost 13. Series record against Montana—UM 80, MSU 110.

Lettermen returning: Willie Weeks, Scott Koelzer, Mark Beckwith, Bill Lewis, Virgil Taueg. Lettermen lost: Nick Fullerton, Bill Brickhouse.

## Puget Sound

**Monday, Jan. 17 at Missoula and Monday, Feb. 7 at Tacoma's Memorial Fieldhouse (6,000).**

Loggers; Green, Gold and Blue. Independent. 2,700 students. Tacoma, Washington. Athletic director Doug McArthur. Publicity, Rodger Peterson.

Coach Don Zech, won 72, lost 12.

1970-71 record—won 24, lost 5. Series record against Montana—UM 1, UPS 1.

Lettermen returning: Dan Bogrand, Rick Brown, Jan Jewett, Jerry Sparks. Lettermen lost: Charles Lowery, Ed Houston, Mike Jordan, Tom Delaney, Dave Beba.

## Air Force Academy

**Saturday, Jan. 22 at Missoula.**

Falcons; Silver and Blue. Independent. 4,200 students. U.S. Air Force Academy, Colorado. Athletic director Col. Frank Merritt. Publicity, Hal Bateman.

Coach Major Hank Egan (in his first season).

1970-71 record—won 12, lost 14. Series record against Montana—UM 0, AF 2.

Lettermen returning: Tom Blase, Dave Kapaska, Steve Gast, Steve Gulasey. Lettermen lost: Four starters (names not available).

## Idaho

**Friday, Jan. 28 at Missoula, and Friday, Feb. 4 at Moscow's Memorial Gymnasium (3,581).**

Vandals; Silver and Gold. Big Sky Conference. 7,200 students. Moscow, Idaho. Athletic director Ed Knecht. Publicity, Bob Maker.

Coach Wayne Anderson, won 64, lost 64.

1970-71 record—won 14, lost 12. Series record against Montana—UM 1, UI 1.

Lettermen returning: Don Beane, Paul Hardt, Doug Hansen, Adrian Wegner. Lettermen lost: Malcolm Taylor, John Nelson, Adrian Prince, Marv Williams, Tim Cummings, Gary Koethe.

## Gonzaga

**Saturday, Jan. 29 at Missoula, and Saturday, Feb. 5 at Spokane's Kennedy Pavilion (4,000).**

Bulldogs (Zags); Columbia Blue and White. Big Sky Conference. 2,900 students. Spokane, Washington. Athletic director T. H. "Hank" Anderson. Publicity, Paul Schafer.

Coach T. H. "Hank" Anderson, won 276, lost 258.

1970-71 record—won 13, lost 13. Series record against Montana—UM 76, GU 47.

Lettermen returning: Larry Carter, Chris Nikola, Greg Sten. Lettermen lost: Bill Quigg, Howard Burford.

## Northern Arizona

**Friday, Feb. 11 at Missoula, and Thursday, Feb. 17 at Flagstaff's Lumberjack Gymnasium (3,500).**

Lumberjacks; Blue and Gold. Big Sky Conference. 9,350 students. Flagstaff, Arizona. Athletic director Norman B. Johansen. Publicity, Norm Borg.

Coach Herb Gregg, won 268, lost 236.

1970-71 record—won 6, lost 19. Series record against Montana—UM 1, NAU 1.

Lettermen returning: Walt Monnon, Mark Champagne, Floyd Mathew, Gerald Jeffery, Major Smith.

# Weber State

Saturday, Feb. 12 at Missoula, and Saturday, Feb. 19 at Ogden's Wild-cat Gymnasium (5,000).

Wildcats; Purple and White. Big Sky Conference. 10,000 students. Ogden, Utah. Athletic director Dale L. Gardner. Publicity, Don Spainhower.

Coach Gene Visscher, first year.

1970-71 record—won 21, lost 6. Series record against Montana—UM 5, WSC 16.

Lettermen returning: Bob Davis, Brady Small, Richard Cooper, Jonnie Knoble, Greg Soter. Lettermen lost: Kent Ross, Bill Orr, Dave Sakowitz, Curt Nations, Willie Sojourner, Jim Sivulich.

## Freshmen

### 1970-71 Freshman Scores

UM	Opponent	Opp.	High Scorer
88	Wissiston	102	Anderson—25
89	Mary's College (SD)	96	Anderson—20
69	Carroll JV	89	Anderson—20
74	North Idaho	95	Anderson—17
102	Montana State	65	Rocheleau—23
64	North Idaho	83	Hollenbeck—16
74	Big Bend JC	86	
79	Gonzaga	72	Hollenbeck—20
97	Montana State	102	Lyman, Selvig, Hollenbeck—18
93	Carroll JV	82	Selvig—30
101	Eastern Washington JV	87	Lyman, Anderson, Selvig—18
88	Whitworth JV	78	Selvig—23
89	Eastern Washington JV	87	Anderson—24
114	Malmstrom AFB	67	Rocheleau—44
108	Malmstrom AFB	70	Hollenbeck—27
99	Gonzaga	87 (OT)	Rocheleau—26
124	Big Bend JC	85	Selvig—45

### Freshman Schedule 1971-72

Day	Date	School	Time	Place
Saturday	Dec. 4	Eastern Washington JV	6:00	Cheney
Thursday	Dec. 9	Big Bend College	8:00	Moses Lake
Monday	Dec. 13	Columbia Basin CC	5:55	Missoula
Friday	Dec. 17	Carroll College JV	5:55	Missoula
Friday	Jan. 7	Whitworth JV	5:55	Missoula
Saturday	Jan. 8	Big Bend College	5:55	Missoula
Saturday	Jan. 15	Montana State Frosh	6:00	Bozeman
Monday	Jan. 17	Eastern Washington JV	5:55	Missoula
Saturday	Jan. 22	North Idaho JC	5:55	Missoula
Monday	Jan. 24	Montana State Frosh	5:55	Missoula
Friday	Jan. 28	University of Montana	5:55	Missoula
		Intramural All Stars		
Saturday	Jan. 29	Gonzaga U Frosh	5:55	Missoula
Friday	Feb. 4	Idaho U Frosh	5:55	Moscow
Saturday	Feb. 5	Gonzaga U Frosh	6:00	Spokane
Friday	Feb. 11	Carroll College JV	5:55	Missoula
Saturday	Feb. 12	College of Great Falls JV	5:55	Missoula
Saturday	Feb. 19	North Idaho JC	8:00	Coeur d'Alene
Saturday	Feb. 26	Whitworth	6:00	Spokane
Tuesday	Feb. 29	Carroll College JV	6:00	Helena



1971-72 Freshman Roster

Number	Name	Ht.	Wt.	Hometown	High School
W					
20	Bailey, Ruben	5-10	175	East Chicago, Ind.	Washington
12	Campbell, Edward	6-2	175	Dillon, Mont.	Beaverhead County
50	Charlton, James	6-4½	200	Helena, Mont.	Helena
32	Darby, James	6-10	180	North Vancouver, B.C.	North Vancouver
33	Goehry, Mark	5-9	155	Brewster, Wash.	Brewster
10	Honkala, Eric	6-4	180	Yankton, South Dakota	Yankton
22	McGinnis, Rick	6-3½	185	Missoula, Mont.	Sentinel
44	McKenzie, Kenneth	6-8½	225	Port Coquitlam, B.C.	Sentinel
42	Nord, Mark	6-0	180	Missoula, Mont.	Sentinel
30	Peck, Thomas	5-10	165	Libby, Mont.	Libby
4	Robinson, William	6-4	185	Great Falls, Mont.	Falls Public
14	Sieckman, Richard	5-11	175	Great Falls, Mont.	Great Falls Public
24	Smedley, Larry	6-6½	185	Vancouver, Wash.	Columbia River
34	Stambaugh, Tim	6-7	195	Portland, Oregon	Grant
52	Schmasow, Glenn	6-1	180	Great Falls, Mont.	Great Falls Public
	Svennugsen, Rock	6-2	185	Shelby, Mont.	Shelby
	Walker, Duane	6-3	200	Malta, Mont.	Malta
	HEAD COACH: Jud Heathcote				
	FROSH COACH: Jim Brandenburg				
	ASSISTANT FROSH COACH: Don Wetzel				

# Basketball Records

## TEAM, SINGLE GAME

- Highest winning score**  
111-84 vs. Idaho State, 1966
- Highest score by Montana team**  
111 vs. Idaho State, 1966
- Highest score by opponents**  
124 by Idaho State, 1969
- Most field goals made**  
39, vs. Illinois State, 1966, and  
Wisconsin (Milwaukee), 1965
- Most free throws made**  
34, vs. Wyoming, 1953, and Gonzaga,  
1968
- Best field goal percentage**  
.717, vs. Washington State, 1968  
(33-46)

## TEAM, SINGLE SEASON

- Most points**  
2,400, 1949-50 (31 games)
- Highest scoring average**  
83.6, 1965-66 (24 games, 2,006 points)
- Best field goal percentage**  
.451, 1965-66 (758-1,680)
- Best free throw percentage**  
.710, 1959-60 (389-548)
- Most rebounds**  
1,250, 1964-65 (26 games)
- Most consecutive wins**  
13, in 1942

## FIELD HOUSE RECORDS

- Most points scored by individual**  
42, by Wayne Estes, Utah State, 1964
- Most points by UM player**  
37, by John (Doc) Holliday, 1965
- Most points scored by any team**  
111, by Montana vs. Idaho State, 1966
- Most points scored by Montana team**  
111, vs. Idaho State, 1966
- Most free throws made**  
452, Bob Cope, 1947-50 (four seasons)  
399, Bob Cope, 1948-50 (three seasons)
- Best field goal percentage**  
.490, Steve Lowry, 1960-63
- Best free throw percentage**  
.801, Tim Aldrich, 1961-64
- Most rebounds**  
788, Russ Sheriff, 1955-58

## INDIVIDUAL SINGLE GAME

- Most points**  
40, Bob Cope vs. Gonzaga, 1948  
(Old Gym)
- 37, John (Doc) Holliday vs. Chico  
State, 1965 (Field House)
- Most field goals made**  
14, Dan Balko vs. Denver, 1959, and  
Wyoming, 1960; Tim Aldrich vs.  
Gonzaga, 1963 and 1964
- Most free throws made**  
20, Ron Moore vs. Gonzaga, 1968
- Most rebounds**  
26, Russ Sheriff vs. Gonzaga, 1955

## INDIVIDUAL, SINGLE SEASON

- Most points**  
701, Bob Cope, 1949-50
- Best scoring average**  
22.6, Bob Cope, 1949-50 (31 games)
- Most field goals made**  
276, Bob Cope, 1949-50
- Best field goal percentage**  
(min. 100 scored)  
.577, John Quist, 1965-66 (112-194)
- Most free throws made**  
159, Chuck Davis, 1952-53
- Best free throw percentage**  
(min. 50 made)  
.837, Tim Aldrich, 1963-64 (87-104)
- Most rebounds**  
393, Ray Howard, 1954-55

## INDIVIDUAL, CAREER

- Most points**  
1,808, Bob Cope, 1947-50  
(four seasons)
- 1,633, Bob Cope, 1948-50  
(three seasons)

## C. R. DRAGSTEDT AWARD

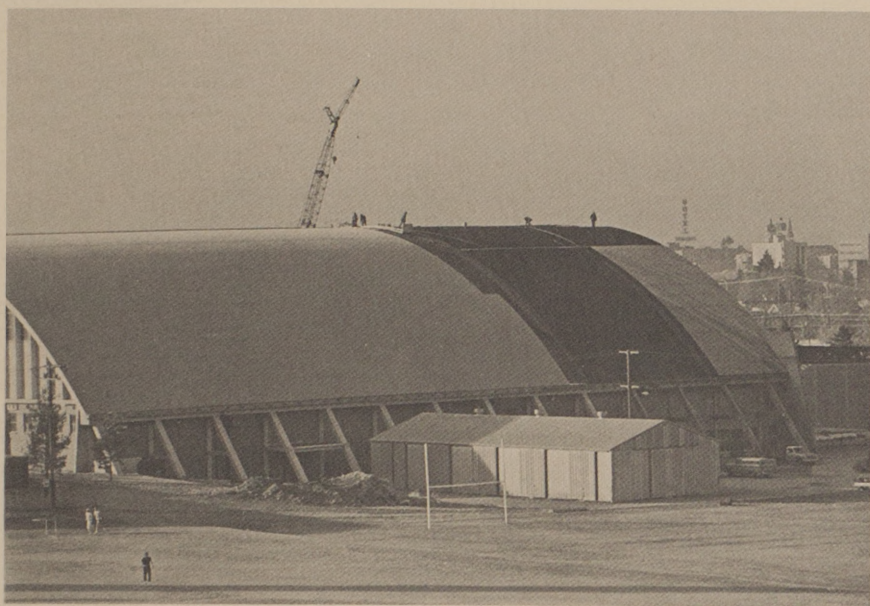
### Most Valuable Player (preferably senior)

- 1953—Chuck Davis
- 1954—Ed Anderson
- 1955—Ed Argenbright
- 1956—Ed Argenbright
- 1957—Zip Rhoades
- 1958—Russ Sheriff
- 1959—Dan Balko
- 1960—Dan Balko
- 1961—Bob O'Billovich
- 1962—Dan Sullivan
- 1963—Ray Lucien
- 1964—Tim Aldrich
- 1965—Ed Samelton
- 1966—Gary Peck
- 1967—Dennis Biletznikoff
- 1968—Don Parsons
- 1969—Ron Moore
- 1970—Dave Gustafson
- 1971—Don Wetzel

## JOHN EAHEART MEMORIAL AWARD

### Outstanding Defensive Player

- 1961—Kay Roberts
- 1962—Bob O'Billovich
- 1963—Tim Aldrich
- 1964—Harold Fullerton
- 1965—Gary Meggellin
- 1966—Greg Hanson,  
Norm Clark
- 1967—Greg Hanson
- 1968—Rick Johnston
- 1969—Dave Gustafson
- 1970—Howard Clark
- 1971—Mike Vernon



## Fieldhouse Construction Continues

The University of Montana basketball Grizzlies will have a bigger and better home next year, for as the 1971-72 season gets underway, construction continues on the addition to the Harry Adams Field House. With 60 per cent of the work done to date, completion of the project is scheduled for December of 1972, resulting in a larger, more modern field house able to seat 9,500 fans.

Apart from size, the major change in the arena will be in the layout of the court. At present, the playing floor runs from east to west, parallel with the arch in the ceiling, but next year it will run from north to south, thus freeing the space formerly taken up in court length for seats. The new Tartan floor will be sunk 12 feet, providing room for bleachers as well as better viewing. In addition to changes in floor design, there will be some remodeling of varsity dressing

rooms, a separate weight room and a new wrestling room. The north end of the building will contain several PE activity rooms, including two small gyms, eight handball courts and dressing rooms.

For this season, the arena will look much the same as in previous seasons, with the exceptions of the new, lowered ceiling and the replacement of the former balcony seating with permanent plank seats. The temporary press box will be removed at the end of basketball season, at which time a new one will be permanently installed. At a final cost of \$2.64 million, the "new" Harry Adams Field House will do more than provide a pleasant environment for basketball fans, it will serve a vital function as a center for several phases of athletics at the University of Montana.

**Jane Mackey, Sports Assistant**

# University of Montana

## Varsity Basketball

### 1971-72

Games at Missoula in Bold Face

Date	Opponent
Dec. 1	University of Oregon
Dec. 3	Washington State University
Dec. 7	Wyoming University
Dec. 10-11	Daffodil Classic—Tacoma, Wash.
Dec. 13	<b>Midwestern University</b>
Dec. 17	<b>University of South Dakota</b>
Dec. 22	<b>University of Calif., Santa Barbara</b>
Dec. 30	<b>Portland State University</b>
Jan. 7	<b>Idaho State University</b>
Jan. 8	<b>Boise State College</b>
Jan. 15	Montana State University
Jan. 17	<b>Puget Sound University</b>
Jan. 22	<b>Air Force Academy</b>
Jan. 24	<b>Montana State University</b>
Jan. 28	<b>University of Idaho</b>
Jan. 29	<b>Gonzaga University</b>
Feb. 4	University of Idaho
Feb. 5	Gonzaga University
Feb. 7	Puget Sound University
Feb. 11	<b>Northern Arizona</b>
Feb. 12	<b>Weber State College</b>
Feb. 17	Northern Arizona
Feb. 19	Weber State College
Feb. 25	Idaho State University
Feb. 26	Boise State College

Home games begin at 8 p.m. MST