

9-1-1952

1952 Grizzly Football Yearbook

University of Montana—Missoula. Athletics Department

Let us know how access to this document benefits you.

Follow this and additional works at: https://scholarworks.umt.edu/grizzlyfootball_yearbooks

Recommended Citation

University of Montana—Missoula. Athletics Department, "1952 Grizzly Football Yearbook" (1952). *Grizzly Football Yearbook, 1939-2018*. 6.

https://scholarworks.umt.edu/grizzlyfootball_yearbooks/6

This Yearbook is brought to you for free and open access by the Intercollegiate Athletics at ScholarWorks at University of Montana. It has been accepted for inclusion in Grizzly Football Yearbook, 1939-2018 by an authorized administrator of ScholarWorks at University of Montana. For more information, please contact scholarworks@mso.umt.edu.

Montana University

1952

GRIZZLIES

MISSOULA, MONTANA

PRESS-RADIO
TELEVISION
INFORMATION
BOOKLET

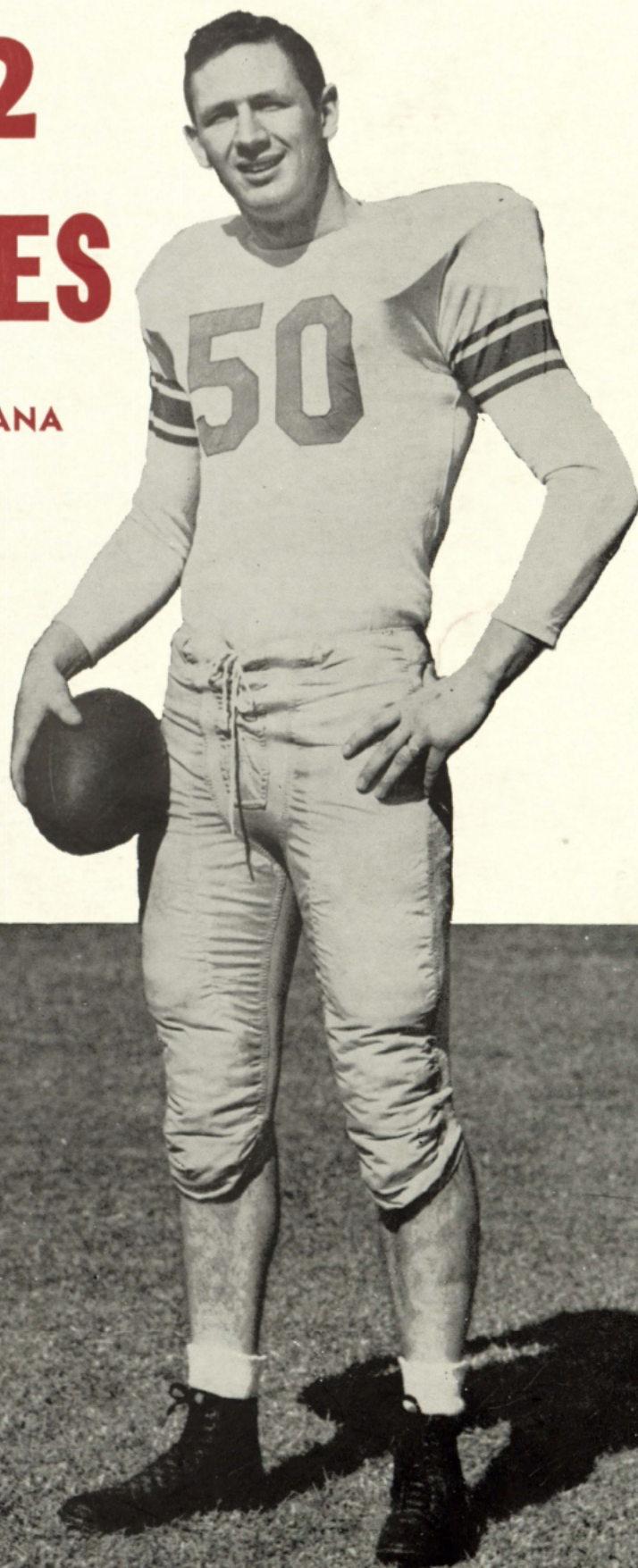


TABLE OF CONTENTS

Press and Radio Information 1

Mountain States Conference Schedule 2

1952 Schedule, 1951 Results, All-Time Record. 3

General Information on Montana University 4

The 1952 Grizzly Coaching Staff 5

1952 Outlook 8

1952 Football Roster 9

Thumbnail Sketches of Players 11

Experience Breakdown 17

Miscellaneous 18

Derivation of Grizzlies and Traditions 19

Montana All-Time Football Record 20

Results for Past Ten Years 22

1951 Game Statistics 23

1951 Individual Statistics. 24

Montana's All-Time All-Star Teams 25

Grizzlies 1952 Opponents 26

Memorandum 33

Cover: Harold Maus, 1952 Captain.

A 6'4", 200 pound End from Hamilton, Montana.

MONTANA UNIVERSITY RADIO AND PRESS BOOKLET

FOOTBALL 1952

This brochure is prepared for the convenience of Sportwriters and Sportcasters in following Montana University's Grizzlies during the 1952 Football campaign. For additional information, special stories, photographs or Press Tickets, please address:

Fred C. Cunningham
Athletic Publicity Director
Montana University
Missoula, Montana

Press and Radio Information

Members of the Working Press of all Legitimate Newspapers or wire services desiring to cover Grizzly games are entitled to one seat in Montana's Press Box. Please write for tickets well in advance of game to be covered. The tickets will be held in the Athletic Publicity Director's Office and can be picked up any time before the starting of the game.

Radio Booth facilities are available to broadcasting companies. No charge is made for broadcasting rights. Write the Publicity Director for permission so provisions can be arranged for your broadcast. Competent Spotters will be supplied if you so desire.

Telephone facilities are available and direct Western Union wires may be ordered in. Western Union boys will be on hand to carry all dispatches to the downtown Western Union office at the end of each period. An official statistician will supply press and radio information including half-time and final statistics, lineup and substitution summaries. Transportation will be available for visiting writers to down-town hotels

(WOMEN OR CHILDREN NOT ALLOWED IN PRESS BOX)

Publicity Directors

Please send your brochure and future Press releases to the following Missoula, Montana addresses:

Fred C. Cunningham, Athletic Publicity Director, Montana University
Ray T. Rocene, Sports Editor, Daily Missoulian
John T. Campbell, Radio Station KXLL
Cy Noe, Radio Station KGVO
Frank Norberg, Sports Editor, Kaimin, Montana University

1952 MOUNTAIN STATES CONFERENCE FOOTBALL SCHEDULE

DATE	MONTANA	UTAH STATE	WYOMING	B. Y. U.	DENVER	COLO. A&M	NEW MEXICO	UTAH UN.
SEPT. 20	UTAH STATE (NITE) MISSOULA	MONTANA MISSOULA			COLO. COLLEGE 9/19 DENVER	COLO. MINES GOLDEN		OREGON STATE SALT LAKE CITY
SEPT. 27	WYOMING	COL. OF PACIFIC	MONTANA	NEW MEXICO	LOWRY FIELD 9/26 DENVER	ARIZONA STATE	B. Y. U.	IDAHO BOISE
OCT. 4	LARAMIE B. Y. U.	OGDEN WYOMING	LARAMIE UTAH STATE	PROVO MONTANA	COLO. A&M	TEMPE DENVER	PROVO N. MEX. AGG.	ARIZONA U.
OCT. 11	MISSOULA DENVER	LOGAN IDAHO	LOGAN COLO. A&M	MISSOULA UTAH U.	DENVER MONTANA	DENVER WYOMING	ALBUQUERQUE	SALT LAKE CITY B. Y. U.
OCT. 18	DENVER	LOGAN	LARAMIE	SALT LAKE CITY	DENVER	LARAMIE	OPEN	SALT LAKE CITY
OCT. 18	COLO. A&M	FRESNO STATE	NEW MEXICO	OPEN	UTAH U.	MONTANA	WYOMING	DENVER
OCT. 25	FORT COLLINS OREGON U.	FRESNO COLO. A&M	LARAMIE UTAH U.	DENVER	DENVER B. Y. U.	FORT COLLINS UTAH STATE	LARAMIE TEXAS WESTERN	DENVER WYOMING
NOV. 1 NOV 1.	EUGENE MONT. STATE	LOGAN U. OF WICHITA	LARAMIE B. Y. U.	PROVO WYOMING	PROVO DRAKE U.	LOGAN	EL PASO ARIZONA U.	LARAMIE COLORADO U.
	MISSOULA	WICHITA	PROVO	PROVO	DES MOINES	OPEN	ALBUQUERQUE	SALT LAKE CITY
NOV 8	IDAHO MOSCOW	OPEN	KANSAS STATE MANHATTAN	SAN JOSE STATE SAN JOSE	NEW MEXICO DENVER	UTAH U. FORT COLLINS	DENVER	COLO. A&M FORT COLLINS
NOV. 15	OPEN	B. Y. U. LOGAN	ARIZONA STATE TEMPE	UTAH STATE LOGAN	OPEN	NEW MEXICO ALBUQUERQUE	COLO. A&M ALBUQUERQUE	SANTA CLARA SACRAMENTO
NOV. 22	NEW MEXICO ALBUQUERQUE	DENVER 11/21 LOGAN	OPEN	COLO. A&M FORT COLLINS	UTAH STATE 11/21 LOGAN	B. Y. U. FORT COLLINS	MONTANA ALBUQUERQUE	OPEN
NOV. 29		UTAH U. 11/27 SALT LAKE CITY	DENVER 11/27 DENVER	ARIZONA STATE TEMPE	WYOMING 11/27 DENVER	COLO. U. BOULDER	OPEN	UTAH STATE 11/27 SALT LAKE CITY
DEC. 6		NEW MEXICO ALBUQUERQUE					UTAH STATE ALBUQUERQUE	

1952 Schedule1951 Results

<u>Date</u>	<u>Place</u>	<u>Opponents</u>	<u>Mont. Score</u>	<u>Opponents</u>
Sept. 20	*MISSOULA	Utah State College	7	Washington University 58
Sept. 27	*Laramie	Wyoming University	25	New Mexico University 7
Oct. 4 #	*MISSOULA	Brigham Young U.	0	Denver University 55
Oct. 11	*Denver	Denver University	9	Idaho University 12
Oct. 18	*Fort Collins	Colorado A&M	38	Montana State College 0
Oct. 25	Eugene	Oregon University	6	Utah State College 19
Nov. 1	MISSOULA	Montana State College	7	Wyoming University 34
Nov. 8	Moscow	Idaho University	6	Colorado A&M 34
Nov. 22	*Albuquerque	New Mexico University	10	Wash. State College 47

* Conference
Homecoming

Won 2 -- Lost 7 -- Tied 0

Montana University was admitted in July 1950 as a member of the Mountain States Athletic Conference. The Grizzlies started their first new Conference affiliation competition with swimming, winter quarter 1951, and have competed in the full conference sports program since that time. In Football each member institution must play at least five Conference games to qualify for the Championship.

MONTANA UNIVERSITY ALL-TIME RECORD

52 years of Football

Won 159	Lost 184	Tied 24	Pct. .470
Montana's Total Points - 4,838	Opponents Total Points - 5,202		

General Information on Montana University

Location: Missoula, Montana
Chartered: February 17, 1893
President: Dr. Carl McFarland
Faculty Athletic Representative: Dr. Earl Lory
Enrollment: More than 2,000 men and women.
Colors: Copper, Silver, Gold.
Team Nicknames: Grizzlies, Silvertips.
Home Stadium: Dornblaser Field, Capacity 10,000. Named after Paul Dornblaser, Grizzly hero of a great 1914 team, who was killed in action during World War I.
Conference: Mountain States (Members are: Denver U., Wyoming U., New Mexico U., Utah U., Brigham Young U., Utah State, Colorado A&M, Montana U.)

GRIZZLY ATHLETIC STAFF

Director of Athletics: Clyde W. "Cac" Hubbard 520 Daly Ave. Phone 4729	Oregon State	1921
Head Football Coach: Eddie Chinske 233 Keith. Phone 9-1725	Montana	1930
Line Coach: Joe John Zeger 105 Mary	University of Wash.	1949
Assistant Coach, Baseball Coach: Frank Milburn 204 Beverly. Phone 8118	West Point	1914
Assistant Coach, Track Coach, Head Scout: Harry Adams 204 Beverly. Phone 8118	Montana	1921
Basketball Coach: George P. "Jiggs" Dahlberg 517 University. Phone 7268	Montana	1925
Trainer: Naseby Rhinehart 1914 S. 5th West. Phone 6916	Montana	1935
Publicity Director: Fred C. Cunningham 435 McLeod. Phone 3018	Montana	1949 1949

MONTANA ATHLETIC STAFF

CLYDE W. "CAC" HUBBARD, athletic director, is in his 30th year as an executive of Intercollegiate Athletics. Before graduating from Oregon State College in 1921, Cac won 9 varsity letters by participating in Football, Basketball and Baseball. He was All-Pacific Coast Conference in Football and Basketball and was offered a Professional contract in Baseball which he turned down to go into Collegiate Coaching. Starting his Coaching career at Oregon State in 1921 as an Assistant, Cac moved to the College of Puget Sound in 1927 as Head Football Coach and Director of Athletics. From 1929 to 1932 saw Hubbard Directing the Physical Education Department and Heading the Coaching staff at the San Francisco Olympic Club. Professor Hubbard took over Denver University's Basketball Fortunes in 1932 where he also served as assistant Football Coach. In the next 17 years at D.U. Cac coached all of the sports at one time or the other, winning many Baseball, Basketball and Golf championships. As head Football Coach and Director of Athletics, in 1945 he won Denver's first Football Conference title in 37 years and took the pioneer eleven to play in the Sun Bowl. The years from 1942 to 1944 saw Lt. Col. Hubbard serving with the United States Air Force as a Physical Education and Director of Training Officer. Returning to Denver University after the War, Cac coached Football and was Director of Athletics until 1949 when he moved to Missoula and took over the Directorship of Montana University's Athletic Department. The past three years he has been masterminding the administrative side of Athletics at the U. and making unbelievable gains in strengthening and developing the Athletic program. The Grizzlies entrance into the Skyline "8" in 1950 is one example. This gave Montana the first opportunity in her history to play a full Conference schedule and also to be on a more equal footing in competition. Cac is married and has two children, Dick, a halfback on the Grizzly Football team, and Nan, a sophomore at Montana University.

EDDIE CHINSKE, head football coach, is starting his first year as Head Football mentor of a Collegiate Team. Eddie was elevated from assistant Coach to the top position last spring when Ted Shipkey resigned to enter private business. Chinske joined the Grizzly Athletic Staff in 1946 as Assistant Football, Basketball, and Head Baseball Coach. The new Grizzly coach came to Montana University for the first time as a student back in 1926 as a Junior College Transfer from Winona Normal in Minnesota. He played as halfback and quarterback for three grid seasons, was elected Captain of the 1928 Silvertip Eleven. Eddie also lettered thrice in Basketball and was awarded two letters in Baseball and one in Golf while attending the University. He is still a par Golpher. The new mentor's first coaching assignment was handling the Grizzly Cubs in 1929, which lost only one game that season. In 1930 he moved to Miles City as head coach of all sports. The season of 1936 saw Chinske move to Missoula County High School where he remained until inking the University contract in 1946. In the 16 years that Eddie coached High School he chalked up more State Championship Titles in Football and Basketball than any Coach in the history of the State. Coach Chinske closed his high school coaching career with 22 straight victories. As Freshman coach at the U. the cub team under his guidance won 13 and lost 3 games. Born in Michigan City, Ind., one of nine sons. Married to the former Margaret Johnson of Paradise, also a University graduate, and they have four children, Edward 17; Mary Margaret 13; John 11; and Lewis 9.

JOHN ZEGER, Line coach, is starting his first year at Montana University this fall. Zeger comes to the University from Olympic Junior College where he has been Head Football Coach and instructor in Health and Physical Education since 1949. His teams there won the Washington-Oregon Junior College conference championships three years in a row. He is a native of Chicago, born February 6, 1919 and attended Harrison Tech High School in Chicago. He entered the University of Washington in 1939 and played football under Jim Phelan in 1940 and 1941. During the war he was in the Air Force and played on the Fourth Air Force football team. John returned to Washington University in 1946 where he made all Pacific Coast Conference that season and also had the honor of captaining the '46 Huskies. After one season of playing professional football with the New York Giants he returned to Washington as an Assistant Coach. In 1948, during the illness of Coach Howie O'Dell, Zeger held down the Head Line Coach duties. Young and hard-working, John will make Coach Chinske a top-notch assistant.

GEORGE P. "JIGGS" DAHLBERG -- HEAD BASKETBALL COACH, AND ASSISTANT
It FOOTBALL COACH.

It would take all day to name the many attributes of hard-working, dependable Coach Dahlberg. "Jiggs", as he is known to his public, assists in football until early October, when it's time to trot his basketball squad out on the hardwood, and from then on it's a lot of Basketball for the ever hustling Dahlberg. "Jiggs" not only continues to run his basketball teams in high gear and assists in football, but handles the freshman baseball team when spring rolls around and is also the Athletic Department's top proselytor. His friendly humorous nature makes him a natural in meeting the public

Dahlberg graduated from Montana in 1925 not only with athletic honors but with scholastic honors as well. After graduation, Jiggs went to Miles City for four years during which time he chalked up two state championships. Hoquaim, Washington prep school was second stop on Dahlberg's tour and here he piloted the Hoquaim lads to 10 victories in 11 games for two seasons, and captured the South-west Washington title in basketball. Jiggs moved to Anaconda for a year, then went back to Puyallup for four years. Just before coming back to his alma mater in 1937, Dahlberg was at Chehallis, Washington, for a season. Jiggs was basketball mentor and assisted with football until 1942, when he was called into the Army. He coached Fort Lawton baseball teams in Washington State to a semi-pro championship along with putting out some fine basketball teams. He returned to Montana in 1945 and in 1949 developed the Grizzly's greatest basketball squad; they broke 12 of the 20 existing University records that season. Jiggs is married and has two young children.

GENERAL FRANK MILBURN, assistant coach, has returned to Montana University this summer after an absence of 21 years. General Milburn, who graduated from West Point in 1914, coached the Grizzly Football and Baseball teams from 1926 to 1931, when he commanded the R.O.T.C. Department at the University. Retiring from the Army after 33 years of active service, the Lt. General has rejoined the Faculty of Montana to assume both coaching and administrative duties. He will take charge of the Grizzly baseball squad and will, of course, be of great service in helping his 1928 Captain, Eddie Chinske, in running the football program. The General, whose war record runs from the Iron Curtain in Europe around the world to Korea, is one of the most highly decorated Generals in the nation. Thru the years he has stayed contemporary with progressive athletics. A great follower and participant in all sports. The very youthful-looking Milburn will be a great addition in both ability and prestige to the Grizzly coaching staff. Though with other administrative duties, Coach Milburn will devote most of his time in the fall and spring tutoring Montana athletes. He is married and has two children.

HARRY ADAMS, backfield coach and head scout, is starting his 31st year as a member of Montana University's Athletic Staff. A graduate of Montana in 1921, Harry was signed as Assistant Football, Basketball, and Track Coach that year and has remained loyal to the Grizzlies since. His main duties as Head Track Coach and Assistant Athletic Director have not kept him from participating wholeheartedly in the football program. One of the top scouts in the west, it is Coach Adams who travels the long scouting circuit for the valuable data needed for next-week's strategy.

As an undergraduate for Montana, Harry starred in Football, Basketball and Track. He was a member of the Track mile relay foursome which at one time held the world's record. Beyond a doubt, Coach Adams is one of the Grizzly's Greatest of Old. He served in the last World War as a Colonel, under General Frank Milburn, who has recently retired and returned to the Montana University Faculty. Noted for his fine track squads, Coach Adams has never lost a State Track Championship. Some of his products are Jack Emigh and Ole Ueland in the sprints and middle distances; Al Eiselein and James Saylor in the hurdles and jumps, and most recent is Dick Doyle, Discus, who is a member of the All-American Track Team of 1950.

He is married and has three children.

GRIZZLIES 1952 OUTLOOK

It is a long climb from the bottom of the Skyline "8" Conference Football standings to the top, but Head Coach Eddie Chinske believes that the Grizzlies will start in that direction this fall and shall keep climbing until they reach it in the not too distant future. The new Montana mentor will be making the initial bid come football time with a club of 20 lettermen, most of them seeing better seasons with the Grizzlies than last year.

The picture at the Montana camp looks something like this: The strength of the football squad will rest in the line; the weakness of the machine in the backfield. The forward wall has 14 veterans returning who are capable of playing inspired ball. It will be a heavy platoon with the only visible weakness being the lack of good replacements. Two-year lettermen like Captain Harold Maus, End; Bob Lamley, Jim Murray, and Gordon Jones at Tackle; Mel Ingram and Bob Antonick filling in the guard slots. First-year lettermen returning, who have great potential are: Ed Anderson and Frank Nickel, Ends; Bob Stewart, tackle; and Jimmy Burke, guard. All can and will prove to be tough opposition. The headache facing the coaching staff is if the sophomores coming up, plus some Junior College transfers can fill the bill as to adequate reserves. That question will remain unanswered until fall practice gets well underway.

In the backfield, the halfback positions are and will remain weak until late in the season. Only one returning letterman is on deck, that being Bobby Yurko. Coach Chinske will be using mostly Sophomores who have plenty of speed but need experience. Sophomore candidates like Don Brant, Dean Brott, Bob Dantic, and Billy Gue may develop fast enough to strengthen the Silvertip's running game early in the season.

The biggest blow to the halfback caliber was the loss of veteran Bob Graves, who has been benched indefinitely from a head injury received last season.

In the quarterback station are Dick Shadoan, senior, and Murdo Campbell, sophomore, 1951 letter winners who are capable of turning in better-than-average performances. Good passing arms plus intelligent signal calling mark them as likely season standouts. Backing them up are Johnny Allen, a junior college transfer, and Dick Heath, a fine prospect from the 1950 cub squad. The fullback position has three old-timers back in - Gene Carlson, Bo Laird, and Fred Mirchoff. This position should cause Coach Chinske little worry.

While the outlook at Missoula this year isn't so bright as it has been in other seasons, the picture isn't altogether black. Coach Chinske will be doing his most to develop inexperienced men at top speed and injecting drive and spirit into a somewhat disappointing group from last year. With the reputation of tutoring inspired ball and a long string of victories to prove it, Eddie could field an outfit that will be tough for any foe.

1952 FOOTBALL ROSTER

<u>ENDS:</u>	Age	Height	Weight	Class	Exp.	Home Town
*Anderson, Ed	19	6'2"	200	Junior	1V	Missoula, Mont.
**Gerlinger, Don	21	6'	200	Senior	2V	Chicago, Ill.
**Maus, Harold (capt.)	21	6'4"	200	Senior	2V	Hamilton, Mont.
*Nickel, Frank	19	6'3"	180	Soph.	1V	Billings, Mont.
Olsen, Nels	19	6'1"	185	Soph.	JC	Bellvue, Wash.
**Rothwell, Jack	22	6'2"	195	Senior	2V	Billings, Mont.
Samuelson, George	19	6'4"	190	Soph.	1V	Glendive, Mont.

TACKLES:

Bartsch, Dan	19	6'1"	190	Junior	1V	Butte, Montana
Deuchler, Owen	19	6'	220	Soph.	JC	Seattle, Wash.
**Jones, Gordon	21	6'	205	Senior	2V	Butte, Montana
**Lamley, Bob	24	6'2"	205	Senior 2	2V	Kenton, Ohio
**Murray, Jim	21	6'2"	200	Senior	2V	Anaconda, Mont.
*Stewart, Bob	20	6'	195	Junior	1V	Billings, Mont.
Trippet, Ed	19	6'4"	210	Soph.	JV	Kalispell, Mont.

GUARDS:

**Antonick, Bob	21	6'	205	Senior	2V	Butte, Montana
Burke, Howard	19	6'	180	Soph.	JV	Livingston, Mont.
*Burke, Jim	21	5'11"	175	Junior	1V	Livingston, Mont.
Deluca, Joe	19	6'1"	195	Soph.	JC	Weed, Calif.
**Ingram, Mel	21	5'10"	185	Senior	2V	Billings, Mont.
**Little, Don	18	6'	195	Soph.	JV	Missoula, Mont.
Swerdfeger, Del	19	5'10"	200	Soph.	JV	Ft. Benton, Mont.

CENTERS:

Crumley, Bob	18	5'11"	185	Soph.	JV	Cut Bank, Mont.
Husband, Marlyn	20	6'	185	Junior	JV	Billings, Mont.
*Linsey, Dick	19	6'1"	190	Soph.	1V	Missoula, Mont.

<u>CENTERS (Cont.):</u>	Age	Height	Weight	Class	Exp.	Home Town
*Roberts, Joe	21	6'	185	Junior	1V	Butte, Mont.
Robb, Byron	20	5'11"	185	Soph.	JV	Livingston, Mont.

QUARTERBACKS:

Allen, John	22	5'10"	150	Junior	JC	Seattle, Wash.
*Campbell, Murdo	19	5'11"	170	Soph.	1V	Great Falls, Mont.
Heath, Dick	20	5'9"	180	Soph.	JV	Miles City, Mont.
*Shadoan, Dick	20	5'11"	165	Senior	2V	Billings, Mont.

FULLBACKS:

**Carlson, Gene	20	5'11"	185	Senior	2V	Great Falls, Mont
**Laird, Bo	20	5'11"	200	Senior	2V	Miles City, Mont.
*Mirchoff, Fred	24	5'11"	180	Senior	1V	Long Beach, Calif
Westcamp, Paul	20	5'11"	190	Soph.	JV	Ronan, Montana

HALFBACKS:

Bellis, Harold	21	6'2"	170	Senior	0	Helena, Mont.
Brant, Don	18	5'10"	165	Soph.	JV	Glendive, Mont.
Brott, Dean	19	6'	170	Soph.	JC	Bremerton, Wash.
Dantic, Bob	18	5'9"	165	Soph.	JV	Laurel, Mont.
Gue, Billy	18	5'9"	160	Soph	JV	Great Falls, Mont
Hubbard, Dick	22	5'9"	180	Senior	1V	Missoula, Mont.
Smith, Lee	19	5'9"	175	Soph.	JV	Polson, Mont.
Stocking, Ed	19	5'10"	175	Soph.	JV	Whitefish, Mont.
**Yurko, Bob	21	5'9"	170	Senior	1V	Great Falls, Mont

* Indicates Letters Won.

THUMBNAIL SKETCHES OF 1952 GRIZZLIES

*Denotes Letters.

ENDS:

*ED ANDERSON--Junior, Missoula, 6'2", 200 pounds, age 19. A starting offensive end last season as a sophomore. Will lead the Grizzly end brigade again this fall. A three-sport man earning letters and being a first stringer on the Football, Basketball, and Baseball squads. A great competitor who is destined to be a top all-around player this year. Plays Guard in Basketball and is a top-flight catcher and first baseman on the diamond. Major: Physical Education.

**DON GERLINGER--Senior, Chicago, 6', 200 pounds, age 21. Don is the kicking specialist on the Silvertip Eleven. Because of his value in this department he is seldom used in play. Broke Montana's P.A.T. record in 1950 when he converted 26 times in 32 tries. Previous record was held by Bill Frueninger set at 25 in 1947. Gerlinger also handles the kick-off assignments. Major: Physical Education.

**HAROLD MAUS--Senior, Hamilton, 6'4", 200 pounds, age 21. Captain Hal is one of the brightest parts of the Grizzly Grid machine this fall. His huge, hulking frame with the famed 50 on the back will spend most of the 60 minutes of each game on the field. Outstanding both on offense and defense, should have a banner season. Was the most outstanding defensive man on the Montana squad as a sophomore. Played both platoons last fall. Will be the main target of the passing eyes. Major: Physical Education.

*FRANK NICKEL--Sophomore, Billings, 6'3", 180 pounds, age 19. Frank starred on the defensive squad last year as a freshman. A hard-working up and coming star. Has been picked by the majority of sports writers in the State as a future All-American candidate. Will be starting defensively this year and will probably play plenty of offensive ball. Also lettered in basketball. Made All-State in both football and basketball when he played at Billings Senior High School. A definite player to watch. Major: Physical Education.

NELS OLSEN --Sophomore, Bellvue, Wash., 6'1", 185 pounds, age 19. A Junior College transfer from Olympic. Considered as a possible starter by the Coaching staff after turning in fine performances in spring drill. Major: Fine Arts.

**JACK ROTHWELL--Senior, Billings, 6'2", 195 pounds, age 22. Will play mostly reserve defensive end. A shoulder injury has kept Jack benched most of his college playing career. Married and has a newly-born baby boy. Can be seen tossing the javelin on Harry Adams' track squad each spring. Major: Business Administration.

GEORGE SAMUELSON--Sophomore, Glendive, 6'4", 190 pounds, age 19. Played some on last-year's varsity. Needs more experience, which he will receive this fall, before developing into a top-flight end. Major: Business Administration.

TACKLES:

DAN BARTSCH--Junior, Butte, 6'1", 190 pounds, age 19. A reserve tackle who is in need of more experience. With the lack of good tackles, will undoubtedly gain it this year. Rated by Coach Chinske as a good looking prospect. Was a standout on the Butte High School squad 3 years ago. Major: Physical Education.

OWEN DEUCHLER--Sophomore, Seattle, Washington, 6', 220 pounds, age 19. A transfer from Olympic Junior College. Line Coach, John Zeger expects to use Owen plenty, both Offensively and on the Defense. Made All-American Junior College tackle last year for Olympic. Is fast and uses his 220 pounds to great advantage in smashing line plays. Major: Education.

**GORDON JONES--Senior, Butte, 6', 205 pounds, age 21. The other half of the terrible twin combination of Antonick-Jones. Starred at the other guard spot with his colleague for the past two seasons. Will be used at Tackle this fall. Another great Professional Football candidate. Major: Business Administration.

**BOB LAMLEY--Senior, Kenton, Ohio, 6'2", 205 pounds, age 24. A proven veteran in the Grizzly line of two years. Hard-hitting Bob plays mostly offense. A Navy veteran of 2 years, Lamley transferred to Montana from Ohio State University in 1949. Big, tough, and loves to play hard. An excellent Professional Football candidate. Major: Forestry.

**JIM MURRAY--Senior, Anaconda, 6'2", 200 pounds, age 21. Versatile Jim plays Tackle, Center, Linebacker with the same great ability that makes him an All-American candidate this year. Was named by both AP and UP on their All-State High School team in 1948. Should have his greatest season now. Was chosen the lineman of the year for the Grizzlies in the 1951 campaign. Major: Physical Education.

*BOB STEWART--Senior, Billings, 6', 195 pounds, age 20. Another good reserve player who should see much action. Looked much improved over last year in spring drill. Will play mostly defensive. A good competitor who is strong and rough. Originally hails from Forsyth. Major: Business Administration.

ED TRIPPET--Sophomore, Kalispell, 6'4", 210 pounds, age 19. One of the best sophomore prospects coming up. Turned out for the varsity last year but a knee injury kept him out of action. Will see plenty of action. Major: Journalism.

GUARDS:

**BOB ANTONICK--Senior, Butte, 6', 205 pounds, age 21. A definite All-Conference Candidate and All-American caliber player. Has been playing first-string since his sophomore year. A hard-hitting, aggressive player who has been rated by the coaching staff as one of the best guards to every play at the University. Another great Professional Football candidate. Major: Physical Education.

HOWARD BURKE--Sophomore, Livingston, 6', 180 pounds, age 19. Played on the Cub squad last year. Has a fine chance of seeing lots of action as a sophomore. Younger brother of the up-and-coming fine guard, Jim. Needs experience. Major: Business Administration.

GUARDS: (cont.)

*JIM BURKE--Junior, Livingston, 5'11", 175 pounds, age 21. A small, scrappy guard who played good defensive football for Montana a year ago. He graduated from Livingston High School. Picked in his senior year on the first string. All-Eastern Division Team. Will be a main cog in the Grizzly's guard strength this year. Major: Business Administration.

JOE DELUCA--Sophomore, Weed, Calif., 6'1", 195 pounds, age 19. Another Olympic Junior College transfer who followed Coach John Zeger. John expects to use Joe a great deal both as a guard and as a linebacker. Made All-Junior College in the Washington-Oregon League last year. A top prospect. Major: Education.

**MEL INGRAM--Senior, Billings, 5'10", 185 pounds, age 21. Small, scrappy guard who plays great defensive ball. Out of many games last year with a bad knee injury. With the operation healing fast, Mel expects to be ready for the opening kick-off, Sept. 20th. Most uncanny in solving offensive plays. Will be a major boost to Montana's guard positions. Major: Physical Education.

DON LITTLE--Sophomore, Missoula, 6', 195 pounds, age 18. Don is a prospect up from the Junior Varsity last season. Coach Chinske expects to use him a great deal in a reserve roll. Still needs that experience of top competition. Major: Business Administration.

DEL SWERDFEGER--Sophomore, Cut Bank, 5'10", 200 pounds, age 19. A good line prospect for the future Grizzly teams. Needs experience. Played on the Junior Varsity last fall and made excellent progress during the season. Major: Business Administration.

CENTERS:

BOB CRUMLEY--Sophomore, Shelby, 5'11", 185 pounds, age 18. Played on the Junior Varsity last year as first string center. Will need much grooming before developing into a top flight varsity man. Coach Chinske believes that Bob will be a fine player in the next year. Major: Business Administration.

MARLYN HUSBAND--Junior, Billings, 6', 185 pounds, age 20. Played some varsity ball last season. Will serve in a good reserve capacity this year. Needs more varsity experience. Major: Journalism.

*DICK LINSEY--Sophomore, Missoula, 6'1", 190 pounds, age 19. Though slight, Dick proved himself as one of the best defensive men that Montana has had in many days. He was outstanding in backing up the line last year, and only a Freshman. He will be playing first string defensive ball again this fall. A stand-out on the Spartan High School team two seasons ago. A lad to be watched in the games to come. Major: Forestry.

*JOE ROBERTS--Junior, Butte, 6', 185 pounds, age 21. Was second string offensive center last year. Is the top candidate for the starting offensive honors this season. Stayed out during the 1950 campaign. Was switched from end last fall and turned into a natural center. Major: Education.

CENTERS: (cont.)

BYRON ROBB--Sophomore, Livingston, 5'11", 185 pounds, age 20. Returning to the Grizzly camp after two years with the Army. Robby is a great addition to Montana's line. Played freshman ball in 1949 as first string center. Has the makings of a leading center before the season of 1952 is over. Major: Physical Education.

QUARTERBACKS:

JOHN ALLEN--Sophomore, Seattle, Wash., 5'10", 150 pounds, age 22. Another Olympic Junior College transfer. Though small in size John is an up-and-coming QB. Will be vying for starting honors this fall. An intelligent signal caller with a better-than-average passing arm, makes him a natural. Major: Physical Education.

*MURDO CAMPBELL--Sophomore, Great Falls, 5'11", 170 pounds, age 19. The last of the many Campbell brothers who have played for the Grizzlies. Could develop into the best. As a freshman last year, saw plenty of varsity action until a shoulder injury benched him for the season. A cool, clever signal caller with an excellent arm that needs little developing, will definitely be a top-flight QB in the future. Was outstanding in high school on the Great Falls Bison team. Major: Journalism.

DICK HEATH--Sophomore, Miles City, 5'9", 180 pounds, age 20. Dick played first string on the 1950 Frosh squad. Stayed out and worked during the 1951 Football season. He is back and will be a great help to the Quarterback potential for 1952. Married. Major: Physical Education.

*DICK SHADOAN--Senior, Billings, 5'11", 165 pounds, age 20. The probable season starter. Was second in line during the 1951 season. An honor roll student who puts his ability to use on the gridiron. An intelligent and clever field general. Good passing arm and will develop even better when he acquires more confidence. Major: Business Administration.

FULLBACKS:

**GENE CARLSON--Senior, Great Falls, 5'11", 185 pounds, age 20. A hard-running back who is fast and hard to bring down. Played first string last season. A stand-out from the Great Falls Bison team who lettered in Football, Basketball, and Baseball. Is Montana's No. 1 hurler on the diamond. Major: Business Administration.

**BO LAIRD--Senior, Miles City, 5'11", 200 pounds, age 20. The powerful line-plunging type of back. Plays both offense and as a line-backer on the defense. Lacking only in great running speed which he makes up for in will and determination. An honor roll student. Major: Economics.

*FRED MIRCHOFF--Senior, Long Beach, Calif., 5'11", 180 pounds, age 24. Fred transferred from Santa Ana Junior College a year ago where he made All-Junior College League in the California area. Was starting fullback last fall until injuries benched him for part of the season. Fast and hard-charging, Fred should have a banner season. A lad to watch. Major: Sociology and Anthropology.

FULLBACKS (cont.)

PAUL WESTCAMP--Sophomore, Ronan, 5'11", 190 pounds, age 20. Back with the Grizzlies after a year in the Army, Paul will add much depth to the Fullback position. Needs more experience. Played fullback on the Grizzly Frosh team in 1950. Major: Physical Education.

HALFBACKS:

HAROLD BELLIS--Senior, Helena, 6'2", 170 pounds, age 21. This will be Bud's first season on the Grizzly Grid team. Will be used almost entirely for punting. Played on Coach Jiggs Dahlberg's Basketball squad last year. Major: Law.

DON BRANT--Sophomore, Glendive, 5'10", 165 pounds, age 18. One of six Sophomores who will be trying for a first string berth. A fast back who raced the century and 220 for the Grizzly track team. Needs experience. Played for the Junior varsity last fall. Major: Physical Education.

DEAN BROTT--Sophomore, Bremerton, Wash., 6', 170 pounds, age 19. A transfer from Olympic Junior College. A bright prospect for the Silvertip backfield. Will be hard to keep out of a starting berth. Plays both offense and defense. Major: Business Administration.

BOB DANTIG --Sophomore, Laurel, 5'9", 165 pounds, age 18. A fast, hard-running back who will also be vying for a starting position. Was a stand-out on the Junior Varsity last year. Needs more experience. Will be a good back in the seasons to come. Major: Business Administration.

BILLY GUE--Sophomore, Great Falls, 5'9", 160 pounds, age 18. Another Soph. who has a bright Football future at Montana. Fast, quick and hard-running, Billy was one of the top men on the Junior Varsity last season. Worked up to play on the Varsity at the end of the season. Also plays Basketball and made the Varsity Track squad. A boy to watch for the future. Major: Business Administration.

DICK HUBBARD--Senior, Missoula, 5'9", 180 pounds, age 22. Will be one of the top men in the Grizzly backfield. Transferred to Montana in 1949 from Oregon State College. Stayed out two seasons and played last fall. Captained the Golf squad for the past two seasons. Major: Business Administration.

LEE SMITH--Sophomore, Polson, 5'9", 175 pounds, age 19. Another good-looking candidate up from the Junior Varsity. Coach Chinske has high hopes that Lee will develop into an excellent back before the 1952 season is completed. Hard-running, with good deception. Major: Pharmacy.

ED STOCKING--Sophomore, Whitefish, 5'10", 175 pounds, age 19. A sophomore who showed great improvement in spring practice. He is fast, with a lot of drive. Should be another candidate for starting honors at one of the halfback positions. Major: Business Administration.

**BOB YURKO--Senior, Great Falls, 5'9", 170 pounds, age 21. The only letterman returning to the Grizzly halfback position. Bob played alternate first string last year in the Left Half slot. Bob is fast, hard-running and being small is a difficult target for would-be tacklers. Major: Pharmacy.

Montana will use the following position numbering system this year to aid player identification by spectators. Positions will be numbered in the following series:

Ends - 50 - 59 Tackles - 40 - 49 Centers - 20 - 29
Quarterbacks - 60 - 69 Left Halfbacks - 70 - 79 Right Halfbacks - 90 - 99
Guards - 30 - 39 Fullbacks - 80 - 89

GAME UNIFORMS

Home Games

Jerseys: White
Pants: Silver
Helmets: Red
Numerals: Red

Road Games

Jerseys: Red
Pants: Silver
Helmets: Red
Numerals: White

Experience Breakdown of Montana Squad

Lettermen Returning from 1951 Team

(20 including total of 14 regulars from Offensive and Defensive platoons)

Ends: Ed Anderson, Don Gerlinger, Harold Maus, Jack Rothwell, Frank Nickel.

Tackles: Bob Lamley, Jim Murray, Gordon Jones, Bob Stewart.

Guards: Bob Antonick, Jim Burke, Mel Ingram.

Centers: Dick Linsay, Joe Roberts.

Quarterbacks: Murdo Campbell, Dick Shadoan.

Halfbacks: Bob Yurko

Fullbacks: Gene Carlson, Bo Laird. Fred Mirchoff.

Lettermen Not Returning from 1951 Team

(11 including total of 8 regulars from Offensive and Defensive platoons)

Ends: Dick MooMaw, graduation.

Tackles: Bob Leonard, grad., Earl Merrill, grad., Dave Miller, grad., Dick Reed, grad.

Halfbacks: Bob Byrne, grad., Harold Sherbeck, grad., Lloyd Thomas., grad., Paul Wold, grad., Bob Graves, injuries.

Fullbacks: Carol Mayte, graduation.

Transfers and New Material

Ends: Nels Olson.

Tackles: Owen Deuchler.

Guards: Joe Deluca.

Centers: Byron Robb

Quarterbacks: John Allen, Dick Heath.

Halfbacks: Dean Brott, Harold Bellis.

Fullbacks: Paul Westcamp.

1951 Squad Members Non-Lettering

Ends: George Samuelson.

Tackles: Dan Fartsch.

Centers: Marlyn Husband.

Halfbacks: Dick Hubbard.

Candidates from 1951 Freshman Team

Tackles: Del Swerdfeger, Ed Trippet.

Guards: Howard Burke.

Centers: Bob Crumley.

Halfbacks: Don Brant, Bob Dantic, Billy Gue, Ed Stocking.

Fullbacks: Lee Smith.

MISCELLANEOUS INFORMATION

System of play -- T-formation.

Punters - Gene Carlson, Harold Bellis.

Extra points and kickoffs - Don Gerlinger.

Promising Sophomores - Ed Trippet, Tackle; Don Brant, Bob Dantic, Billy Gue,
Ed Stocking, Halfbacks.

Outstanding Linemen - Harold Maus, End; Bob Lamley, Jim Murray, Tackles:
Bob Antonick, Guard; Gordon Jones, Tackle.

1952 Captain - Harold Maus, Hamilton. A 6'4", 200-pound End.

Possible Starters

<u>Offensive</u>			<u>Defensive</u>	
Harold Maus	(200)	LE	Harold Maus	(200)
Bob Lamley	(205)	LT	Gordon Jones	(205)
Bob Antonick	(205)	LG	Bob Antonick	(205)
Joe Roberts	(185)	C-LB	Dick Linsey	(190)
Gordon Jones	(205)	RG	Mel Ingram	(185)
Jim Murray	(200)	RT	Bob Stewart	(195)
Ed Anderson	(200)	RE	Frank Nickel	(180)
Dick Shadoan	(165)	QB-LB	Bo Laird	(200)
Bob Yurko	(170)	LH	Dean Brott	(170)
Billy Gue	(160)	RH	Dick Hubbard	(180)
Fred Mirchoff	(180)	FB-LB	Joe Deluca	(195)

DERIVATION OF "GRIZZLIES" AND "TRADITIONS"

(By John T. Campbell, an old Montana hand, who is Director of Sports and Ace Sports caster for Radio Station K X L L)

Montana's first football team was organized in 1897 and the sideliners appropriately dubbed the pioneer eleven the "varsity." This was the name of Montana grid teams for more than ten years. Somebody liked the name "Bruins" so it was tacked on in 1909, but it was brief-lived. When Montana played Utah University on October 31, 1912, a sports writer called the marauding Montanans the "Grizzlies." Since then until the time Montana entered the Pacific Coast conference, Montana football teams bore the names Bruins, Grizzlies or Bears, -- it didn't make any difference. However, it made a difference to two California schools, as the University of California and University of California at Los Angeles, also carrying portions of the bear phylum, demanded that the situation be cleared. California was, therefore, given the title "Bears" which it later changed to "Golden Bears", UCLA adopted "Bruins" and Montana was plenty satisfied with "Grizzlies." Of the three types, the Grizzly is the most ferocious, strongest and smartest -- according to a man named Webster.

"THE LITTLE BROWN STEIN"

It has come to be a sacred, coveted thing, something cherished by the school holding it, for it represents superiority in football between two intense rivals for at least one year. Where Montana and Idaho grid players struggled for glory in the past, they now battle each other for the handsome wooden-shaped trophy, shaped like a large brew container which symbolizes prestige and honor for their school. Idaho captured the traditional Stein the first year in 1938. It has changed hands many times since then, the most recent being when the Idaho Vandals carried it back home last fall after winning the Home Coming game in Missoula 12-9.. The Stein will go on the block again November 8, when the Grizzlies enter the Vandal Camp at Moscow.

MONTANA ALL-TIME FOOTBALL RECORD
(52 years of football with Coaches and Captains)

<u>YEAR</u>	<u>Won</u>	<u>Lost</u>	<u>Tied</u>	<u>PCT.</u>	<u>MSU</u>	<u>OPP</u>	<u>COACH</u>	<u>CAPTAIN</u>
1897	1	2	3	.333	32	52	Fred Smith	George Kennett
1898	2	2	0	.500	27	24	Sgt. B. Searight	Sid Ward
1899	1	2	0	.333	12	48	Guy Cleveland	Larry Heckler
1900	0	1	0	.000	11	12	Frank Bean	Claude Marceyes
1901	2	3	0	.400	26	31	Frank Bean	Charles Allard
1902	0	3	1	.000	5	64	Dewett Peck	Frank Latimer
1903	2	5	0	.285	49	117	H. B. Conibear	W. O. Craig
1904	3	2	0	.600	99	23	H. B. Conibear	Leo Greenough
1905	2	3	0	.400	117	75	F. W. Shule	John MacLeod
1906	2	4	0	.333	49	78	F. W. Shule	Bill Harriman
1907	4	1	1	.800	114	38	Albion Findlay	A. Morgan
1908	1	2	1	.333	12	15	R. A. White	A. F. Bishop
1909	6	0	1	1.000	169	5	R. A. White	A. F. Bishop
1910	3	2	1	.600	29	22	Robt. Cary	H. D. MacLay
1911	2	1	0	.666	40	14	Robt. Cary	Ed Winstanley
1912	4	3	0	.561	104	66	Lieut. W. Philoon	Paul Dornblaser
1913	2	4	0	.333	50	94	A. G. Heilman	Burton Smead
1914	7	0	1	1.000	201	9	A. G. Heilman	Merrit Owsley
1915	2	2	2	.500	95	56	Jerry Nissen	Leonard Daems
1916	4	1	1	.800	74	46	Jerry Nissen	"Click" Clark
1917	1	4	0	.250	21	84	Jerry Nissen	Chris Bentz
1918	-	-	-	----	--	--		
1919	2	3	2	.400	80	121	Bernie Bierman	George Scherck
1920	4	3	0	.561	227	78	Bernie Bierman	Harry Dahlberg
1921	3	3	1	.500	66	90	Bernie Bierman	Steve Sullivan
1922	3	4	0	.428	65	133	J. W. Stewart	"Jelly" Elliot
1923	4	4	0	.500	108	117	J. W. Stewart	Ted Plummer
1924	4	4	0	.500	264	173	"Click" Clark	Grant Silvernale
1925	3	4	1	.428	121	128	"Click" Clark	Ted Illman
1926	3	5	0	.375	129	126	Frank Milburn	Bill Kelly
1927	3	4	1	.428	52	142	Frank Milburn	Lou Veerhus
1928	4	5	1	.444	71	147	Frank Milburn	Eddie Chinske
1929	3	5	1	.375	118	121	Frank Milburn	Ray Lewis
1930	5	3	0	.625	122	175	Frank Milburn	Clyde Carpenter
1931	1	6	0	.166	56	155	Bernard Oakes	No Season Captain
1932	2	7	0	.285	84	226	Bernard Oakes	" " "
1933	3	4	0	.425	91	85	Bernard Oakes	" " "
1934	2	5	1	.285	90	82	Bernard Oakes	" " "
1935	1	5	2	.166	48	108	Doug Fessenden	John Sullivan
1936	6	3	0	.666	138	89	Doug Fessenden	Carl Swanson
1937	7	1	0	.875	143	28	Doug Fessenden	Milt Popovich
1938	5	3	1	.625	82	51	Doug Fessenden	Co-Capts. John Dolan Bill Lazetich
1939	3	6	0	.333	40	84	Doug Fessenden	Co-Capts. E. Tabaracci R. Thornally
1940	4	4	1	.500	95	149	Doug Fessenden	Tom O'Donnell

Montana All-Time Football Record, Cont'd.

<u>YEAR</u>	<u>Won</u>	<u>Lost</u>	<u>Tied</u>	<u>PCT.</u>	<u>MSU</u>	<u>OPP</u>	<u>COACH</u>	<u>CAPTAIN</u>
1941	6	3	0	.666	119	94	Doug Fessenden	-----
1942	0	8	0	.000	35	229	Clyde Carpenter	-----
1945	1	4	0	.200	75	135	Jiggs Dahlberg	-----
1946	4	4	0	.500	103	156	Doug Fessenden - Co-Capt.	Joe Thiebes Ed Rossmiller
1947	7	4	0	.636	199	171	Doug Fessenden - Co-Capt.	Ben Tyvand Sam Leeper
1948	3	7	0	.300	143	223	Doug Fessenden	Jack O'Loughlin
1949	5	4	0	.555	181	200	Ted Shipkey - Co-Capt.	Ray Bauer Frank Semansky
1950	5	5	0	.500	227	147	Ted Shipkey	Ken Campbell
1951	2	7	0	.222	108	266	Ted Shipkey - Co-Capt.	Bob Byrne Paul Wold
1952				---	---	---	Eddie Chinske	Harold Maus

Totals 159 184 24 .470 4,838 5,202

RESULTS FOR PAST TEN YEARS

1938

M-27 Cheney - - - - - 0
M- 0 San Francisco - 0
M- 7 De Paul - - - - - 6
M-13 Texas Tech - - -19
M- 0 North Dakota - - 7
M- 6 Idaho - - - - -19
M- 9 Gonzaga - - - - - 0
M-13 Montana State - 0
M- 7 Arizona - - - - - 0

Won 5 Lost 3 Tied 1

1941

M-20 Brigham Young - 7
M-27 N.Dak. State - - 0
M- 7 UCLA - - - - -14
M-13 Gonzaga - - - - - 6
M-23 Mont. State - -13
M- 0 Washington - - -21
M-13 N. Dak. Univ. - - 6
M-16 Idaho - - - - - 0
M- 0 Oregon State - -27

Won 6 Lost 3 Tied 0

1948

M- 7 Eastern Wash. -12
M- 7 Utah State C. - 18
M-27 Pacific Univ. - 0
M- 0 Wash. State - - 48
M-14 Mont. College - 0
M- 0 Univ. Idaho - - 39
M-20 Brigham Young - 26
M-14 Col. of Pac. - -32
M- 7 Stanford U. - - 39
M-47 No. Dak. U. - - 7

Won 3 Lost 7 Tied 0

1951

M- 7 Wash. Univ. - - 58
M-25 New Mexico - - - 7
M- 0 Denver Univ. - -55
M- 9 Idaho Univ. - - 12
M-38 Mont. State - - 6
M- 6 Utah State - -19
M- 7 Wycming - - - - 34
M- 6 Colorado A&M - -34
M-10 Wash. State - - 47

Won 2 Lost 7 Tied 0

1939

M- 9 Portland - - - - 0
M- 7 San Francisco -12
M- 6 Montana State - 0
M- 6 UCLA - - - - -20
M-13 Idaho - - - - - 0
M- 0 Washington - - - 9
M- 0 Gonzaga - - - - 23
M- 0 Texas - - - - -13
M- 0 Arizona - - - - 6

Won 3 Lost 6 Tied 0

1946

M-26 Colorado A&M - - 0
M-31 Eastern Wash. - - 7
M- 0 Oregon - - - - -34
M-20 Montana State - 7
M- 7 Utah State - -27
M-19 Idaho - - - - - 0
M- 7 UCLA - - - - -61
M- 0 Washington - - -21

Won 4 Lost 4 Tied 0

1949

M-33 S. Dakota U. - -13
M- 7 Wash. State - - 13
M-18 Utah State - -13
M-12 Colorado A&M - -27
M-14 Oregon State - -63
M-19 Idaho U. - - - -47
M-34 Montana State - 12
M-19 Eastern Wash. - 6
M-25 Brigham Young - 6

Won 5 Lost 4 Tied 0

1940

M- 9 Eastern Wash. 0
M- 0 Wash. State - 13
M-19 Texas Tech. - 32
M- 6 Montana State 0
M-13 Gonzaga - - - 10
M- 0 Oregon - - - -38
M-28 Idaho - - - - 18
M-20 San Diego - - 38
M- 0 Portland - - 0

Won 5 Lost 4 Tied 0

1947

M-21 Eastern Wash. 0
M-21 Portland Univ. 0
M- 7 Arizona - - - 40
M- 7 Utah State - -13
M-12 Montana State-13
M-21 Idaho - - - - 0
M-13 Wash. State - 12
M-14 California - -60
M-41 Colorado A&M- 7
M-14 U. of Hawaii -12
M-26 Hawaii (All Star)14

Won 7 Lost 4 Tied 0

1950

M-52 Eastern Wash. 0
M-28 Idaho U. - - -27
M-13 Oregon U. - - 21
M- 7 Wash. State - 14
M-33 Montana State 0
M- 0 Oregon State -20
M-35 Col. of Pug.
Sound - 7
M-14 Nevada U. - - 19
M-38 Utah State - - 7
M- 7 San Jose St. -32

Won 5 Lost 5 Tied 0

Montana University

Game by Game Summary 1951

Teams	Score	First Downs	NT. yds. Rush	NT. Yds. Pass	Total Offense	Passes Att.	Passes Comp.	Hod. Int.	Int. Ret.	Punt Avg.	Punt Avg. Return	Yds. Pen.	Fumbles
Montana	7	3	33	9	42	16	1	3	58	38.0	0	10	1
Washington U.	58	29	278	256	534	35	20	4	4	29.5	12.3	45	3
Montana	25	20	240	200	440	15	9	2	1	37.5	4	50	2
New Mexico U.	7	10	133	52	185	11	3	3	0	29.5	5.5	0	4
Montana	0	2	-17	28	11	13	3	4	-2	34.1	0	0	4
Denver U.	55	21	289	140	429	17	11	2	44	0	16.4	49	3
Montana	9	14	214	146	360	22	9	0	40	25.8	4	15	2
Idaho U.	12	11	237	86	323	11	2	3	0	38.1	6.5	55	3
Montana	38	15	267	82	349	8	5	0	100	44.3	9	55	4
Mont. State College	0	7	6	70	76	14	6	2	0	32.0	7	10	3
Montana	6	6	70	100	170	20	10	1	21	36.8	0	10	1
Utah State	19	20	291	68	359	16	5	2	44	28.0	16	65	2
Montana	7	14	172	30	202	16	5	3	15	42.8	0	10	8
Wyoming U.	34	10	90	113	203	17	7	3	6	45.7	15.6	40	2
Montana	6	13	104	83	187	26	11	2	0	34.7	3.7	25	1
Colorado A&M	34	16	186	199	385	21	11	0	19	29.1	10	25	3
Montana	10	11	119	70	189	23	8	0	22	39.5	0	61	0
Wash State College	47	26	251	234	485	32	15	2	0	0	20	72	0
Montana	108	98	1242	748	1990	159	61	16	236	36.7	5.6	236	23
Opponents	266	150	1791	1218	3009	174	80	22	109	31.8	13.2	361	23

Individual Statistics

<u>Rushing</u>		1951				
<u>Name</u>	<u>Pos.</u>	<u>TCB</u>	<u>YG</u>	<u>YL</u>	<u>NYG</u>	<u>AVG</u>
Bob Byrne (Grad.)	RHB	138	749	56	693	5.0
Bob Yurko	LHB	41	241	24	217	5.3
Fred Mirchoff	FB	32	108	7	101	3.2
Bo Laird	FB	27	85	7	78	2.9
Gene Carlson	FB	22	67	9	58	2.6
Bob Graves (out-injuries)	HB	8	22	5	17	2.1
Paul Wold (Grad.)	LHB	28	80	22	58	2.0
Billy Gue	HB	4	17	0	17	4.2
George Vucurovich	QB	42	163	130	33	.8
Hal Sherbeck (Grad.)	HB	5	8	6	2	.4
Doug Andreason (Mil.)	HB	3	1	0	1	.3
Murdo Campbell	QB	5	14	34	-20	--
Dick Shadoan	QB	12	1	63	-62	--
Totals		332	1595	353	1242	3.7

<u>Scoring</u>		<u>TD</u>	<u>PAT.</u>	<u>FG</u>	<u>TP</u>	<u>Note:</u>
Bob Byrne (Grad.)		6	0	0	36	
Fred Mirchoff		2	0	0	12	10 TD's rushing
Bob Yurko		1	0	0	6	4 TD's passing
Paul Wold (Grad.)		2	0	0	12	1 TD pass in- terception
Bo Laird		1	0	0	6	
Ed Anderson		1	0	0	6	1 TD Blocked punt
Frank Nickel		1	0	0	6	
Dave Miller (Grad.)		1	0	0	6	
Don Gerlinger		0	7	1	10	
Lloyd Thomas (Grad.)		1	0	0	6	
Gordon Jones		0	0	0	2	
Totals		16	7	1	108	

<u>Passing</u>							<u>Scoring</u>
<u>Name</u>	<u>Pos.</u>	<u>Att.</u>	<u>Comp.</u>	<u>Had Int.</u>	<u>Yds.</u>	<u>Pct.</u>	<u>Passes</u>
George Vucurovich	QB	77	30	10	465	39%	2
Dick Shadoan	QB	55	21	2	183	36.4%	2
Bob Byrne (Grad.)	RHB	27	10	1	100	37%	0
Murdo Campbell	QB	4	0	0	0	---	0
Totals		159	61	14	748	38.3%	4

<u>Receiving</u>		<u>Pos.</u>	<u>Received</u>	<u>Yards</u>	<u>Scoring</u>
Bob Byrne (Grad.)		RHB	10	182	1
Harold Maus		E	11	136	0
Bob Yurko		LHB	7	101	0
Ed Anderson		E	8	95	1
Paul Wold (Grad.)		LHB	8	82	1
Frank Nickel		E	3	46	1
Bo Laird		FB	3	29	0
Hal Sherbeck (Grad.)		HB	2	23	0
George Samuelson		E	1	20	0
Lloyd Thomas (Grad.)		HB	2	17	0
George Vucurovich		QB	1	8	0
Bob Graves		HB	2	6	0
Billy Gue		HB	2	3	0
Dick Moomaw		E	1	0	0
Totals			61	748	4

MONTANA'S ALL-TIME ALL-STAR FOOTBALL TEAMS
(By Ray T. Rocene, Dean of Montana Sport Editors)

From 1897 to 1930			From 1931 to 1950	
<u>Year</u>	<u>Flayers</u>	<u>Position</u>	<u>Flayers</u>	<u>Year</u>
1920	Paul Freeman	Center	George Saylor	1934
1921	Harry Dahlberg	Guard	Aldo Forte	1938
1917	Sam Cook	Guard	William Hawke	1934
1917	Christian Bentz	Tackle	Leonard Noyes	1937
1913	Paul Dornblaser	Tackle	Henry Ford	1949
1916	Earl "Click" Clark	End	Naseby Rhinehart	1934
1921	Fred "Cub" Daylis	End	Ray Beuer	1950
1926	Bill Kelly	Quarterback	Tom Kingsford	1950
1921	Steve Sullivan	Back	Milt Popovich	1937
1925	Ted "Chief" Illman	Back	Eso Neranche	1941
1915	Cecil Vance	Back	Jack O'Loughlin	1949
1915	Alfred "Ribs" Robertson	Back	Robert Stansberry	1933

(Editor's Note: The fall of 1951 brought a new era in football to Montana State University. The kick-off to New Mexico on September 29 marked the Grizzlies' debut in the Skyline "8" Conference. With the start of Skyline Competition for Montana, Mr. Ray T. Rocene, Sports Editor of the Daily Missoulian, will start picking his third All-Time All-Star Grizzly Team. In his close to 40 years as Sports Editor, Ray has closely analyzed the abilities of over 1600 players who have vied for his selection. These are the boys who were tops end made the All-Time teams. The following has been extracted from Ray's letter as he picked the first member to make the third era group.)

"First name the equal of any of the backs previously named on the All-Star cast:

ROBERT LEE BYRNE, the Billings Blockbuster, grand competitor, fast, shifty, enduring, never hurt, a team man at all times. He can run, kick, pass, catch passes, tackle, block, do everything on the gridiron. The fans will never know how good he was until they miss him this fall and future falls."

UTAH STATE COLLEGE

September 20 (8:00 p.m.) at Missoula, Montana

Location:	Logan, Utah	Conference:	Mountain States
Enrollment:	3,000	Athletic Director:	Joe E. Whitesides
Colors:	Navy Blue and White	Head Coach:	John Roning
Nickname:	Aggies	School & Year:	Minnesota-1935
Stadium:	Aggie Stadium	Publicity Director:	Andy Hayes
Capacity:	10,000	Offensive System:	Single Wing

1951 Results

1952 Schedule

Utah S. Opponents

27	Arizona State	33
21	Wichita Univ.	7
0	Wyoming Univ.	37
20	Colorado A & M	20
19	Montana Univ.	7
20	Utah Univ.	28
27	Brigham Young	28
14	Denver Univ.	7
13	New Mexico	17

Sept. 20	Montana University at Missoula
Sept. 27	Col. of the Pacific at Ogden
Oct. 4	Wyoming University at Logan
Oct. 11	Idaho University at Logan
Oct. 18	Fresno State at Fresno
Nov. 1	Wichita University at Wichita
Nov. 15	Brigham Young at Logan
Nov. 21	Denver University at Logan
Nov. 27	Utah University at Salt Lake
Dec. 6	New Mexico University at Albuquerque

Won 3 Lost 5 Tied 0

RESULTS OF PAST UTAH STATE-MONTANA U. GAMES

1904	M.U.	5-0	1919	USC	47-0
1905	M.U.	23-0	1933	M.U.	26-0
1906	USC	17-6	1945	USC	44-13
1910	USC	5-3	1946	USC	26-0
1911	USC	8-0	1947	USC	13-7
1912	USC	17-0	1948	USC	18-7
1913	USC	9-7	1949	M.U.	18-13
1914	M.U.	32-0	1950	M.U.	38-7
1917	USC	21-6	1951	USC	19-6

No. Games Played: 18

Utah State Won: 12

Montana U. Won: 6

Points Scored U.S.C.: 264

Points Scored M.U. : 197

WYOMING UNIVERSITY

September 27 (1:30 p.m.) at Laramie, Wyoming

Location:	Laramie, Wyoming	Conference:	Mountain States
Colors:	Brown and Gold	Athletic Director:	Glenn J. Jacoby
Nickname:	Cowboys	Head Coach:	Bowden Wyatt
Stadium:	War Memorial	School & Year:	Tenn. 1939
Capacity:	18,000	Publicity Director:	Wiles Hallock
Enrollment:	2,200	Offensive System:	Single Wing

1951 Results

<u>Wyo.</u>	<u>Opponents</u>	
0	Florida Univ.	13
28	Idaho Univ.	0
20	Denver Univ.	14
37	Utah State	0
7	Colorado A & M	14
20	Brigham Young	20
13	Utah Univ.	0
34	Montana Univ.	7
41	New Mexico Univ.	7
20	Arizona State	7

1952 Schedule

Sept. 27	Montana Univ. at Laramie
Oct. 4	Utah State at Logan
Oct. 11	Colorado A & M at Laramie
Oct. 18	New Mexico University at Laramie
Oct. 25	Utah University at Laramie
Nov. 1	Brigham Young at Provo
Nov. 8	Kansas State at Manhattan
Nov. 15	Arizona State at Tempe
Nov. 27	Denver University at Denver
Dec. 6	Houston University at Houston

Won 7 Lost 2 Tied 1

Previous Games Played

1951 Wyoming 34 Montana 7

#####

#####

#####

BRIGHAM YOUNG UNIVERSITY

October 4 (2:00 p.m.) at Missoula, Montana (Homecoming)

Location:	Provo, Utah	Conference:	Mountain States
Enrollment:	5,600	Athletic Director:	Edwin R. Kimball
Colors:	Royal Blue and White	Head Coach:	Charles Atkinson
Nickname:	Cougars	School & Year:	Idaho Univ. 1938
Stadium:	BYU Stadium	Publicity Director:	Dave Schulthess
Capacity:	10,000	Offensive System:	Modified T.

1951 Results

<u>BYU</u>	<u>Opponents</u>	
27	Idaho State	7
67	Western State	7
20	Hawaii Univ.	7
6	Utah Univ.	7
20	Wyoming Univ.	20
6	Denver Univ.	56
21	Colorado A & M	19
28	Utah State	27
0	New Mexico Univ.	34
20	Pepperdine College	0

1952 Schedule

Sept. 27	New Mexico Univ. at Provo
Oct. 4	Montana University at Missoula
Oct. 11	Utah University at Salt Lake City
Oct. 25	Denver University at Provo
Nov. 1	Wyoming University at Provo
Nov. 8	San Jose State at San Jose
Nov. 15	Utah State at Logan
Nov. 22	Colorado A & M at Fort Collins
Nov. 29	Arizona State at Tempe

Won 6 Lost 3 Tied 1

Results of Past Brigham Young-Montana U. Games

1941 MU 20-7; 1942 BYU 12-6; 1948 BYU 26-20; 1949 MU 25-6

No. Games Played	4	Points scored BYU	51
BYU won	2	Points scored MU	71
MU won	2		

DENVER UNIVERSITY
October 11, (2:00 P.M.) at Denver, Colorado

Location: Denver, Colorado
Enrollment: 8,500
Colors: Crimson and Gold
Nickname: Pioneers, Hilltoppers
Stadium: Denver U. Stadium
Capacity: 27,500

Conference: Mountain States
Athletic Director: E. E. "Tad" Weiman
Head Coach: John Baker
School & Year: USC-1932
Publicity Director: Roger Rambeaux
Offensive: Single-Wing

1951 Results

D. U.-Opponents

41	Colorado College	0
7	Drake University	20
14	Wyoming University	20
55	Montana University	0
33	New Mexico University	17
14	Utah University	17
56	Brigham Young	6
35	Col. of Pacific	33
7	Utah State	14
21	Colorado A&M	6

1952 Schedule

Sept. 19	Colorado College at Denver
Sept. 26	Lowry Air Force Base at Denver
Oct. 4	Colorado A&M at Denver
Oct. 11	Montana Univ. at Denver
Oct. 18	Utah Univ. at Denver
Oct. 25	Brigham Young at Provo
Nov. 1	Drake Univ. at Des Moines
Nov. 8	New Mexico Univ. at Denver
Nov. 21	Utah State at Logan
Nov. 27	Wyoming Univ. at Denver

Won 6 Lost 4 Tied 0

Results of Previous Games Played
1951 - Denver Univ. 55 Montana Univ. 0

#

COLORADO A&M

October 18, (1:30 P.M.) at Fort Collins, Colorado

Location: Fort Collins, Colorado
Enrollment: 3,500
Colors: Green and Orange
Nickname: Aggies, Rams
Stadium: Colorado Field
Capacity: 13,000

Conference: Mountain States
Athletic Director: Harry W. Hughes
Head Coach: Robert L. Davis
School & Year: Utah U. - 1930
Publicity Director: Carly E. Davis
Offensive System: T-Formation

1951 Results

1952 Schedule

<u>Colo.</u>	<u>Opponents</u>		<u>1952 Schedule</u>
13	Colorado University	28	Sept. 20 Colorado Mines at Golden
41	Colorado Mines	0	Sept. 27 Arizona State at Tempe
54	Colorado College	13	Oct. 4 Denver Univ. at Denver
14	Wyoming Univ.	7	Oct. 11 Wyoming Univ. at Laramie
20	Utah State	20	Oct. 18 Montana Univ. at Fort Collins
20	New Mexico Univ.	15	Oct. 25 Utah State at Logan
19	Brigham Young	21	Nov. 8 Utah Univ. at Fort Collins
34	Montana Univ.	6	Nov. 15 New Mexico Univ. at Albuquerque
21	Utah Univ.	27	Nov. 22 Brigham Young at Fort Collins
6	Denver Univ.	21	Nov. 29 Colorado Univ. at Boulder

Won 5 Lost 4 Tied 1

RESULTS OF PAST COLO. A&M - MONT. U. GAMES

1946 M.U. 26-0; 1947 M.U. 41-7; 1949 Colo. A&M - 27-12; 1951 Colo. A&M 34-6;

No. Games Played: 4
Mont. U. won: 2
Colo. A&M won: 2
Points Scored M.U. 85
Points Scored Colo. 68

OREGON UNIVERSITY

October 25, (2:00 P.M.) at Eugene, Oregon

Location:	Eugene, Oregon	Conference:	Pacific Coast
Enrollment:	4,500	Athletic Director:	Leo A. Harris
Colors:	Green & Lemon Yellow	Head Coach:	Len Casanova
Nickname:	Ducks, Webfoots	School & Year:	Santa Clara - 1927
Stadium:	Hayward Field	Publicity Director:	Art Litchman
Capacity:	23,500	Offensive System:	T-Formation

1951 Results

1952 Schedule

<u>Oregon</u>	<u>Opponents</u>
20	Stanford Univ.
39	Arizona Univ.
6	Col. of Pacific
6	Washington Univ.
0	U.C.L.A.
6	Washington State
14	Idaho Univ.
6	Boston Univ.
26	California Univ.
7	Oregon State

Sept. 20	U.C.L.A. at Los Angeles
Sept. 27	Nebraska Univ. at Portland
Oct. 4	Idaho Univ. at Moscow
Oct. 11	California Univ. at Portland
Oct. 18	Washington Univ. at Seattle
Oct. 25	Montana Univ. at Eugene
Nov. 1	Col. of Pacific at Eugene
Nov. 8	Washington State at Eugene
Nov. 15	Stanford Univ. at Palo Alto
Nov. 22	Oregon State at Portland

Won 2 Lost 8 Tied 0

RESULTS OF PAST OREGON U. - MONT. U. GAMES

1928 Oregon U. 31- 6
 1934 Oregon U. 13- 0
 1940 Oregon U. 38- 0
 1946 Oregon U. 34- 0
 1950 Oregon U. 21-13

No. Games Played 5

Oregon U. won 5
 Mont. U. won 0

Points Scored Oregon U. 137
 Points Scored Mont. U. 19

MONTANA STATE COLLEGE

November 1, (1:30 P.M.) at Missoula, Montana (Dad's Day)

Location: Bozeman, Montana
 Enrollment: 1700
 Colors: Blue and Gold
 Nickname: Bobcats
 Stadium: Gatton Field
 Capacity: 5,000

Conference: Rocky Mountain
 Athletic Director: John Breeden
 Head Coach: Tony Storti
 School & Year: Delaware - 1948
 Publicity Director: Max Davidson
 Offensive System: Winged-T

1951 Results

1952 Schedule

MSC	Opponents				
6	Utah Univ.	55	Oct. 4	East. Wash. at Bozeman	
13	East. Wash College	19	Oct. 11	Colorado State at Greeley	
13	Colorado College	40	Oct. 18	Colorado College at Bozeman	
6	Idaho State College	19	Oct. 25	Western State at Bozeman	
0	Colorado State	24	Nov. 1	Montana Univ. at Missoula	
0	Montana Univ.	38	Nov. 8	Idaho State at Pocatello	
0	Western State	26	Nov. 22	Colorado Mines at Golden	
Won 0	Lost 7	Tied 0			

RESULTS OF PAST MONT. STATE - MONTANA U. GAMES

1897 M.U.	18-6	1913 M.U.	7-0	1932 Mont. S.	19-7
1898 M.U.	6-0	1914 M.U.	20-0	1933 M.U.	32-0
1899 Mont. S.	38-0	1916 Tie	6-6	1934 M.U.	25-0
Mont. S.	5-0	1917 M.U.	9-7	1935 M.U.	20-0
1900 Mont. S.	12-11	1919 Tie	6-6	1936 M.U.	27-0
1901 Mont. S.	31-0	1920 M.U.	28-0	1937 M.U.	19-0
1902 Mont. S.	38-0	1921 M.U.	14-7	1938 M.U.	13-0
1903 Mont. S.	13-6	1922 M.U.	7-6	1939 M.U.	6-0
1904 M.U.	79-0	1923 M.U.	24-13	1940 M.U.	6-0
1908 Tie	0-0	1925 M.U.	28-7	1941 M.U.	23-13
Mont. S.	5-0	1926 M.U.	27-0	1946 M.U.	20-7
1909 M.U.	3-0	1927 M.U.	6-0	1947 Mont. S.	13-12
M.U.	15-5	1928 Tie	0-0	1948 M.U.	14-0
1910 Tie	0-0	1928 Mont. S.	14-12	1949 M.U.	34-12
M.U.	10-0	1930 M.U.	13-6	1950 M.U.	33-0
1912 M.U.	7-0	1931 M.U.	37-6	1951 M.U.	38-0
M.U.	39-3				

No. Games Played: 50

Montana State won: 10

Montana Univ. won: 35

Tied: 5

Points Scored Mont. S. 307

Points Scored Mont. U. 793

IDAHO UNIVERSITY

November 8, (2:00 P.M.) at Moscow, Idaho

Location: Moscow, Idaho
 Enrollment: 3,000
 Colors: Silver and Gold
 Nickname: Vandals
 Stadium: Neale Stadium
 Capacity: 17,500

Conference: Pacific Coast
 Athletic Director: Gale L. Mix
 Head Coach: Babe Curfman
 School & Year: Texas Tech. - 1939
 Publicity Director: Ken Hunter
 Offensive System: Split-T

1951 Results

Idaho	Opponents	
0	Wyoming Univ.	28
7	San Francisco	28
6	Oregon State	34
12	Montana Univ.	9
40	San Jose State	7
13	Oregon Univ.	14
6	Wash. State	9
6	Arizona Univ.	13
19	Utah Univ.	40

Won 2 Lost 7 Tied 0

1952 Schedule

Sept. 20	Washington Univ. at Seattle
Sept. 27	Utah Univ. at Boise
Oct. 4	Oregon Univ. at Moscow
Oct. 11	Utah State at Logan
Oct. 18	North Dakota State at Moscow
Oct. 24	Santa Clara at San Francisco
Nov. 1	Washington State at Pullman
Nov. 8	Montana Univ. at Moscow
Nov. 15	Oregon State at Corvallis

RESULTS OF PAST IDAHO U. & MONT. U. GAMES

1903	Idaho	28-0	1926	Idaho	27-12	1938	Idaho	19-6
1914	Tie	0-0	1927	Idaho	42-6	1939	M.U.	13-0
1915	M.U.	15-13	1928	Idaho	21-6	1940	M.U.	28-18
1916	M.U.	20-13	1929	Idaho	19-0	1941	M.U.	16-0
1917	Idaho	14-13	1930	M. U.	12-6	1942	Idaho	21-0
1919	Idaho	7-0	1931	Idaho	21-19	1945	Idaho	46-0
1920	Idaho	20-7	1932	Idaho	19-6	1946	M.U.	19-0
1921	Idaho	25-7	1933	Idaho	12-6	1947	M.U.	21-0
1922	Idaho	39-0	1934	Idaho	13-6	1948	Idaho	39-0
1923	Idaho	40-0	1935	Idaho	14-7	1949	Idaho	47-19
1924	Idaho	41-13	1936	M.U.	16-0	1950	M.U.	28-27
1925	M.U.	20-14	1937	Idaho	6-0	1951	Idaho	12-9

No. Games Played: 36
 Idaho University won: 24
 Montana University won: 11
 Tied: 1

Points Scored Idaho: 683
 Points Scored Montana: 330

NEW MEXICO UNIVERSITY

November 22 (1:30 p.m.) at Albuquerque, New Mexico

Location:	Albuquerque, New Mexico	Conference:	Mountain States
Enrollment:	4,500	Athletic Director	
Colors:	Cherry and Silver	Head Coach:	Dr. Dudley DeGroot
Nickname:	Lobos, Wolfpack	School and Year:	Stanford, 1924
Stadium:	Zimmerman Field	Publicity Director:	George McFaddin
Capacity:	14,000	Offensive System:	Single-Wing

1951 Results

<u>N.M.</u>	<u>Opponents</u>	
34	Brigham Young	0
20	New Mexico A & M	0
7	Wyoming Univ.	41
7	Texas Western	32
20	Arizona Univ.	32
17	Denver Univ.	33
15	Colorado A & M	20
7	Montana Univ.	25
17	Utah State	13

1952 Schedule

Sept. 27	Brigham Young at Provo
Oct. 4	New Mexico A & M at Albuquerque
Oct. 18	Wyoming Univ. at Laramie
Oct. 25	Texas Western at El Paso
Nov. 1	Arizona University at Albuquerque
Nov. 8	Denver University at Denver
Nov. 15	Colorado A & M at Albuquerque
Nov. 22	Montana University at Albuquerque
Dec. 6	Utah State at Albuquerque

Won 3 Lost 6 Tied 0

Results of Past New Mexico-Montana University Games

1951 Montana University 25

New Mexico 7

#

MEMORANDUM PAGE

MEMORANDUM PAGE

