

University of Montana

ScholarWorks at University of Montana

Lady Griz Basketball Media Guides, 1978-2009

Intercollegiate Athletics

9-1-1987

Lady Griz Basketball Media Guide, 1987-1988

University of Montana (Missoula, Mont. : 1965-1994). Athletics Department

Follow this and additional works at: https://scholarworks.umt.edu/ladygrizbasketball_mediaguides

Let us know how access to this document benefits you.

Recommended Citation

University of Montana (Missoula, Mont. : 1965-1994). Athletics Department, "Lady Griz Basketball Media Guide, 1987-1988" (1987). *Lady Griz Basketball Media Guides, 1978-2009*. 11.

https://scholarworks.umt.edu/ladygrizbasketball_mediaguides/11

This Guide is brought to you for free and open access by the Intercollegiate Athletics at ScholarWorks at University of Montana. It has been accepted for inclusion in Lady Griz Basketball Media Guides, 1978-2009 by an authorized administrator of ScholarWorks at University of Montana. For more information, please contact scholarworks@mso.umt.edu.

Lady Griz Basketball...

...On Top of the Mountain
(West Conference)



University of Montana
1987-88
yearbook

Quick Facts

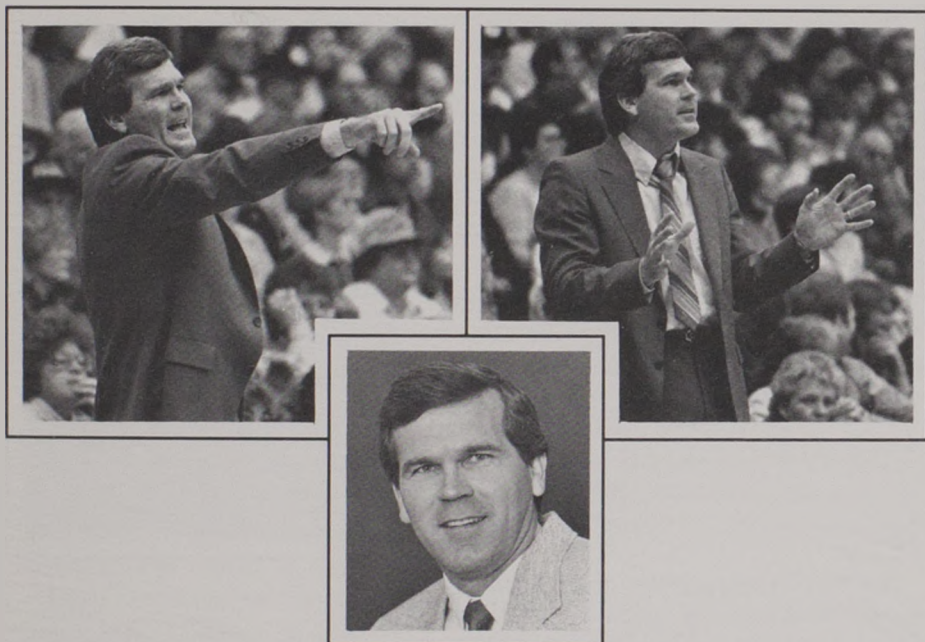
Location	Missoula, Montana
Chartered	February 17, 1893
Enrollment	8,500
Nickname	Lady Griz
Colors	Copper, Silver & Gold
Home Court	Dahlberg Arena (9,029)
Conference	Mountain West
Athletic Director	Harley Lewis
Associate Athletic Director	Kathy Noble
Women's Basketball	
Sports Information Director	Chris Walterskirchen
406-243-6899 (work)	406-721-9379 (home)
Athletic Trainer	Mary McElwain
Head Coach	Robin Selvig
Coach's Record at Montana	203-63 (9 yrs.)
Coach's Collegiate Record	203-63 (9 yrs.)
Assistant Coach	Annette Whitaker
Basketball Office Phone	406-243-5334
1986-87 Overall Record	26-5
1986-87 Conference Record	13-1
National Finish	W.N.I.T.
1986-87 Offensive Average	69.5
1986-87 Defensive Average	55.8
Returning Letterwinners	8
Returning Starters	3

Mailing Address: Department of Intercollegiate Athletics
University of Montana
Adams Field House
Missoula, MT 59812
406-243-5331

Table of Contents

1.....	Head Coach Robin Selvig
2.....	Assistant Coach
3.....	1987-88 Outlook
4.....	1987-88 Roster
5-11.....	Profiles
12.....	1986-87 Results
13.....	1986-87 Stats
14-15.....	Series Records
16.....	The Record Book
17.....	Career Leaders
18-21.....	Opponents
Back Cover.....	1987-88 Schedule

Head Coach Robin Selvig—(Montana, 1974)



With seven 20-win seasons in-a-row University of Montana Lady Griz basketball fans are wondering what Robin "Bo" Selvig the second-winningest basketball coach (men and women) in school history will do this season. He trails only Jiggs Dahlberg (222 wins).

The 14th winningest active Division 1 basketball coach with 76.3 winning percentage (please see bottom of page 2), Selvig averages 22.6 victories a season and 24.4 wins the past seven years.

Selvig, 35, has been the Conference Coach of the Year five of the last six seasons and W.B.C.A. District VII Coach of the Year in 1984 and 1985.

Along with another 20-win season last year came a bid to the Women's National Invitational Tournament in Amarillo, Texas. It was the Lady Griz' second visit to the W.N.I.T. and their seventh consecutive postseason appearance.

Selvig has always emphasized defense and once again his team figured into the national rankings. The Lady Griz were fourth in the nation in scoring defense, allowing 56.6 points a game. The Lady Griz led the nation in scoring defense in 1983, 1985 and 1986.

Selvig came to UM from Plentywood High School near his hometown of Outlook, Montana. He coached there from 1975-78, compiling a record of 38-24.

He had an outstanding career at his alma mater, Montana, and was inducted into the Grizzly Basketball Hall of Fame in 1983. He lettered at UM in 1971-72-73-74. He was an All-Big Sky Conference pick as a senior and awarded the Grizzly Cup given annually to Montana's outstanding student-athlete in 1975. He also earned the John Eaheart Award (Outstanding Defensive Player) as a senior.

Selvig earned his bachelor's degree in Health and Physical Education at UM in 1974.

His brother, Doug, was a four-year letterman for the Grizzlies in the early 80's as was his sister, Sandy (Sullivan).

Robin and his wife, Janie, have two sons, Jeff 6, and Dan 3.

Selvig's Year-by-Year Records

1978-79	13-13	1983-84	27- 4
1979-80	19-10	1984-85	22-10
1980-81	22- 8	1985-86	27- 4
1981-82	22- 5	1986-87	26- 5
1982-83	26- 4		

Totals (9 Seasons)

203-63

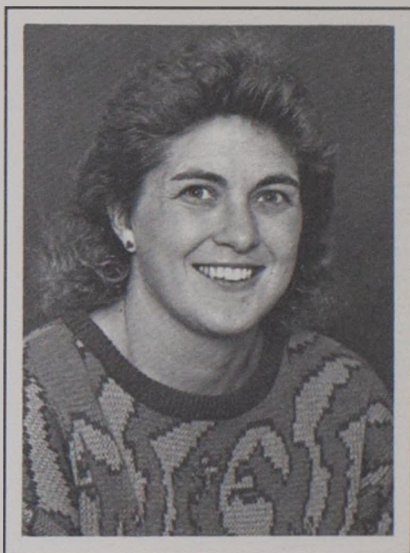
Assistant Coach Annette Whitaker

Annette Whitaker begins her seventh season as the assistant coach of the Lady Griz basketball program. She was the Montana junior varsity coach for each of her first two seasons with the program and now assists head coach Robin Selvig in all coaching duties. Those duties include game strategy, recruiting, conditioning and scouting.

As a collegian, she was a two-year starter at point guard for the Lady Griz and is among the top 20 all-time career scorers with 322 points.

Prior to her career at the University of Montana, Whitaker was a basketball standout at Cashmere High School in Washington, and Wenatchee Valley College.

She is a 1982 graduate of the University of Montana and holds a bachelor's degree in Health and Physical Education.



WINNINGEST ACTIVE DIVISION I WOMEN'S COACHES BY PERCENTAGE

(Minimum five years as major-college head coach; includes record at four-year colleges only.)

Coach, Institution	Yrs.	Won	Lost	Pct.
1. *Leon Barmore, Louisiana Tech	5	147	17	.896
2. Joan Bonvicini, Long Beach St.	8	218	43	.835
3. Marianne Stanley, Pennsylvania	10	269	59	.820
4. Vivian Stringer, Iowa	15	336	81	.806
5. Jody Conradt, Texas	18	470	114	.805
6. Andy Landers, Georgia	8	207	53	.796
7. William Simon, South Carolina St.	13	291	78	.789
8. #Jim Bolla, Nevada-Las Vegas	5	117	34	.775
9. Paul Sanderford, Western Kentucky	5	127	37	.774
10. Joe Ciampi, Auburn	10	229	67	.774
11. Theresa Grentz, Rutgers	13	285	85	.770
12. Alvin Wyatt, Bethune-Cookman	9	163	49	.769
13. Van Chancellor, Mississippi	9	223	68	.766
14. Robin Selvig, Montana	9	203	63	.763
15. Linda Sharp, Southern California	10	237	75	.760

*Co-head coach with Sonja Hogg for 1983-85

#Co-head coach with Sheila Strike-Bolla for 1982-87

Lady Griz 1987-88: Is An Encore Possible?

It seems like the past few seasons, followers of University of Montana Lady Griz basketball keep asking the same question—what will head coach Robin Selvig team do **this** year?

Last year the Lady Griz almost encored their previous season (27 wins) by winning 26 of 31 games, going 12-0 in the Mountain West Conference regular season and winning 24 of their first 26 contests. (The losses were at Washington and Creighton).

Those 26 victories a year ago were notable for two reasons. It was the Lady Griz' seventh 20-win season in-a-row. And win No. 22 (63-48 over Boise State at home) gave Selvig his 200th career win—in just nine seasons as head coach.

Along with another outstanding season came a bid to the Women's National Invitational Tournament in Amarillo, Texas. It was Montana's 7th straight post-season appearance and second in the WNIT.

Nationally the Lady Griz once again figured into the defensive rankings. UM was 4th in scoring defense (56.5) and tied for 21st in field goal percentage defense (40.1). Montana also was ranked in scoring margin (22nd, + 12.9) and won-lost percentage (tie, 12th, .839).

UM's returnees include junior center Lisa McLeod (6-1½), and senior forwards Marti Leibenguth and Dawn Silliker (6-0). However, gone are all-time assists leader Margaret Williams at point guard and backcourt mate Natalie Chamberlain. Williams was a second team all-leaguer and 24th (tie) in the nation in assists with 6.7 a game.

The departure of the talented Williams was eased by the return of 5-11 junior Cheryl Brandell a starter two seasons ago.

Three other key returnees include senior guard Kris Moede, fellow senior guard Karyn Ridgeway and junior forward Jean McNulty, who will redshirt this year.

Letterwinner Kris Haasl, a 6-3 sophomore center should provide good backup, and sophomore Linda Mendel, at 6-1½ could also help there.

Newcomers include frosh Marietta Bahnmler (6-0, F) from Big Sandy, red-shirt Marti Kinzler (6-0, G-F), Colleen McNally (5-5, G) from Seeley Lake High in Montana, redshirt Shelli Sniffin (5-6, G) and Terre Tracy (6-0, F) from C.M. Russell High in Great Falls.

"I don't see any game we don't have a chance to win," Selvig said. "I think we have good returnees and Cheryl coming back really helps."

"Last year we had the best running team we've ever had and next year could be as good or better," Selvig continued. "Our centers and forwards run the floor well, as does Cheryl. We have good scorers at every position and are extremely well-balanced."

"Lisa was a big key to our success last year Selvig said. "and Marti, what can you say about her. She is a great athlete and a real competitor. Our inside game looks to be very strong."

He said that the Lady Griz, Eastern Washington and Montana State, "should all have contending teams for the league championship this season."

University of Montana Women's Basketball

1987-88 Numerical Roster

No.	Name	Pos.	Ht.	Yr.	Exp.	Hometown/High School
11	Shelli Sniffin	G	5-6	Fr.	RS	Lander, WY/Lander HS
13	Colleen McNally	G	5-5	Fr.	HS	Ovando, MT/Seeley Swan HS
15	Marti Leibenguth	F	6-2	Sr.	3V	Missoula, MT/Big Sky HS
21	Karyn Ridgeway	G	6-0	Sr.	2V	Missoula, MT/Hellgate HS
31	Lisa McLeod	C	6-1	Jr.	2V	Great Falls, MT/C.M. Russell HS
33	Marti Kinzler	G-F	5-11	Fr.	RS	Fairview, MT/Fairview HS
35	Linda Mendel	C	6-1	So.	1V/RS	Malta, MT/Malta HS
41	Kris Moede	G	5-9	Sr.	3V	Missoula, MT/Big Sky HS
43	Dawn Silliker	F	6-0	Sr.	3V	Whitefish, MT/Whitefish HS
51	Terre Tracy	F	5-11	Fr.	HS	Great Falls, MT/C.M. Russell HS
53	Kris Haasl	C	6-3	So.	1V	Florence, MT/Florence HS
55	Cheryl Brandell	G-F	6-0	Jr.	2V/RS	Olympia, WA/Olympia HS

V—Varsity Letters Won; HS—High School; RS—Redshirt

Head Coach: Robin Selvig

Assistant Coach: Annette Whitaker

Pronunciation Guide

BrandellBRAN-dell
 HaaslHOZZ-Ull
 LeibenguthLIE-Bin-Gooth

McLeodMcCloud
 MendelMEN-dul
 MoedeMOW-Dee



THE 1987-88 LADY GRIZ: Top row from left: head coach Robin Selvig, former assistant coach Sharla Muralt, Jean McNulty, Dawn Silliker, Marietta Bahnmillier, Kris Haasl, Linda Mendel, Lisa McLeod, Marti Leibenguth, Karyn Ridgeway, athletic trainer Mary McElwain, assistant coach Annette Whitaker. Front row. L to R: Terre Tracy, Cheryl Brandell, Kris Moede, Vicki Austin, Colleen McNally, Shelli Sniffin, Marti Kinzler.

— Seniors —



15 Marti Leibenguth, 3V **6-2, Forward from Missoula, MT**

One of the most consistent performers in Lady Griz history, Marti is currently the No. 7 all-time scorer with 861 points and 8th in rebounding with 511 . . . 1987 Coaches Award . . . Second leading scorer (11.4) and led in rebounding (7.1 rpg) and field goal percentage (53.0%) last season . . . First team all-league a year ago . . . Lady Griz team MVP as a sophomore . . . Career-high 25 points at Idaho in 1986-87 and 13 rebounds at Montana State . . . A lofty 51.9 career field goal percentage . . . Has started last 62 straight contests . . . Montana school record in the javelin at 160-1 . . . As a prep all-state performer at Big Sky High School in basketball and track. . .

Mathematics major.

She is the daughter of Martin and Virginia Leibenguth of Missoula

Birthdate: October 13, 1966.

STATISTICALLY:

Year	G-S	FG-FGA-PCT	FT-FTA-PCT	Pts	Avg	Rebs	Avg
1984-85	32- 1	54-137-.397	32- 53-.604	140	4.4	112	3.5
1985-86	31-31	154-269-.572	59- 85-.694	367	11.8	178	5.7
1986-87	31-31	142-268-.530	70- 88-.795	354	11.4	221	7.1
CAREER	94-63	350-674-.519	161-226-.712	861	9.2	511	5.4



41 Kris Moede, 3V

5-9½, Guard from Missoula, MT

When you talk about instant offense you are talking about Kris, the best pure shooter for the Lady Griz . . . A possible starter this year, she averaged 7.4 ppg and 2.1 rpg . . . Led the team to a W.N.I.T. victory over DePaul, scoring team-high 16 points . . . Scored a career-high 18 points in a home win over Carroll College last year . . . Has played in 85 career games . . . Voted Most Improved Player (Grace Geil Award) as a frosh . . . Another product of local Big Sky High, where she was a two-time all-stater and four times all-conference . . .

Health & Physical Education major.

Kris' parents are Tom and Arlene Moede of Missoula.

Birthdate: September 8, 1966.

STATISTICALLY:

Year	G-S	FG-FGA-PCT	FT-FTA-PCT	Pts	Avg	Rebs	Avg
1984-85	24-0	40- 79-.506	17- 27-.630	97	4.0	32	1.3
1985-86	30-0	61-132-.462	29- 45-.644	151	5.0	72	2.4
1986-87	31-1	97-215-.451	34- 47-.639	229	7.4	66	2.1
CAREER	85-1	198-426-.465	80-119-.672	477	5.6	170	2.0

— Seniors —

21 Karyn Ridgeway, 2V

6-0, Guard from Missoula, Montana

Dramatic improvement in all phases of her game best describes the progress Karyn has made since she walked on at Montana two years ago . . . She was recruited by several schools out of local Hellgate High School and decided to return to UM after spending two years in the music program at Northern Colorado . . . Scored career-high 19 points at Weber State last year . . . Third leading assists person last season with 74 . . . Will battle for starting job with fellow senior Kris Moede . . . All-State and all-conference as a prep and team MVP as a junior and senior . . .

Biology major.

She is the daughter of Clark and Donna Ridgeway of Missoula.

Birthdate: November 20, 1964.



STATISTICALLY:

Year	G-S	FG-FGA-PCT	FT-FTA-PCT	Pts	Avg	Rebs	Avg
1985-86	23-0	12- 33-.364	7-12-.583	31	1.3	14	0.6
1986-87	31-0	53-115-.461	29-44-.659	135	4.4	58	1.9
CAREER	54-0	65-148-.439	36-56-.643	166	3.1	72	1.3

42 Dawn Silliker, 3V

6-0, Forward from Whitefish, Montana

A three-year starter for the Lady Griz, Dawn is among the all-time Lady Griz scorers and rebounders with 814 points (8th) and 489 rebounds (9th) . . . Scored a career-high 21 points at Idaho as a freshman . . . As a sophomore she was MVP of the Lady Griz Insurance Classic and was all-tournament at the Santa Clara Holiday Classic that year . . . Has started 91 of her 93 career games . . . Started all 31 games last season (along with Marti Leibenguth, Margaret Williams and Lisa McLeod) . . . Converse All-American as a senior at Whitefish High . . . All-State and three times all-conference as a prep in basketball . . . Owns distinction of being only female athlete to have her number retired after setting 12 school records at Whitefish High . . .

Dawn is an Elementary Education major.

Her parents are Jack and Shirley Silliker of Whitefish.

Birthdate: July 19, 1966.



STATISTICALLY:

Year	G-S	FG-FGA-PCT	FT-FTA-PCT	Pts	Avg	Rebs	Avg
1984-85	31-31	108-265-.407	67- 95-.705	283	9.1	166	5.4
1985-86	31-29	112-257-.436	48- 69-.696	272	8.8	163	5.3
1986-87	31-31	108-257-.420	43- 75-.573	259	8.4	160	5.2
CAREER	93-91	328-779-.421	158-239-.661	814	8.8	489	5.3

— Juniors —

23 Vicki Austin, TR

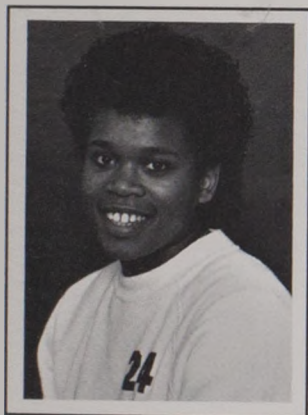
5-7, Guard from E. Moline, IL

A transfer from national powerhouse Long Beach State, Vicki will redshirt this season because of the NCAA's transfer rule . . . At United Township High School was All-State, all-conference and team MVP as a senior . . . Western Big 6 Conference team champions senior year . . . Earned four letters in basketball and was team captain . . . Coached by Mike Dergo . . .

A Criminal Justice major.

Vicki's mother is Iesther Austin of East Moline.

Birthdate: June 27, 1967.



55 Cheryl Brandell, 2V

6-0, Guard/Forward from Olympia, WA

If you see Lady Griz coach Robin Selvig with a smile on his face recently, one of the reasons for that smile might be the return of Cheryl, who returns after a one-year hiatus . . . As a sophomore she was a second team all-leaguer and started in 30 of 31 games . . . In the 1985-86 season (UM was 27-4) she was the team's third leading scorer (9.7 ppg) and led in assists with 150 . . . She also led in steals with 51 . . . As a freshman she started in 14 games and played very well in the W.N.I.T. . . . Selvig calls her, "one of the most versatile players we've ever had at the University." Many compare her to former Lady Griz great Cheri Bratt from Kalispell . . . At Olympia High she was league MVP as a junior and missed her senior season with a knee injury. . . .

Elementary Education major.

Cheryl's parents are John and Helen Brandell of Olympia.

Birthdate: June 18, 1966.



STATISTICALLY:

Year	G-S	FG-FGA-PCT	FT-FTA-PCT	Pts	Avg	Rebs	Avg
1984-85	32-14	72-181-.398	44-60-.733	188	5.6	129	4.0
1985-86	31-30	129-262-.492	42-66-.636	300	9.7	146	4.7
CAREER	63-44	201-443-.454	86-126-.683	488	7.7	275	4.4

— Juniors —

31 Lisa McLeod, 2V

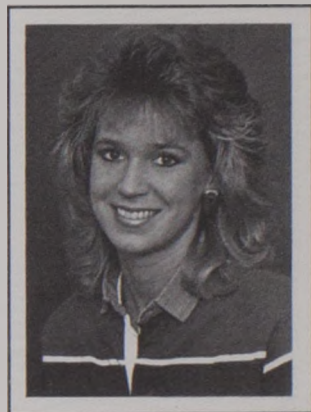
6-1, Center from Great Falls, Montana

A first team All-Mountain West Conference pick last season, Lisa was also the Lady Griz MVP in 1986-87 . . . Only a junior, she is already the No. 12 rebounder and scorer in Lady Griz history, with 360 rebounds and 635 points . . . Named to the W.N.I.T. all-tournament team last year . . . Montana's leading returning scorer at 14.5 ppg . . . Scored a career-high 29 points in a home win over Idaho State . . . Led the team in scoring in 14 of 31 games . . . Last year set a single season record with 62 blocks and has 109 career blocks . . . Set a school record for blocks as a frosh with 47 . . . All-Region VII first teamer . . . Started all 31 games last year . . . At C. M. Russell High she was first team all-state as a junior and senior and a Converse All-American . . . Played for the West in the Montana All-Star series . . .

General Studies major.

Lisa's parents are Robert and Irene McLeod of Cody, Wyoming.

Birthdate: February 28, 1967.



STATISTICALLY:

Year	G-S	FG-FGA-PCT	FT-FTA-PCT	Pts	Avg	Rebs	Avg
1985-86	31- 3	70-162-.432	47- 66-.712	187	7.0	151	4.9
1986-87	31-31	182-358-.508	84-144-.583	448	14.5	209	6.7
CAREER	62-34	252-520-.485	131-210-.624	635	10.2	360	5.8

Jean McNulty, 2V

6-0, Forward from Whitehall, Montana

Instant offense and outstanding rebounding ability best characterize Lisa, who will redshirt this season after undergoing a shoulder operation in early October . . . She was third in scoring with 9.1 ppg and third in rebounding at 5.4 rpg . . . Played in 31 games and was named the winner of the Grace Geil Award (Most Improved) . . . Scored a career-high 24 points in a home win over Western Montana . . . Led the team in scoring in five games and in rebounding six times . . . Had a career-high 13 boards vs. Western . . . At Whitehall High she scored 1,762 points—second most in Montana High School history . . . Converse All-American as a prep and honorable mention by *USA Today* . . . Also a track letter winner at Montana (high jump) . . . As a prep three times all-state in track and the national AAU heptathlon champion in 1983 . . . Also all-state in hoops . . .

Physical Therapy and Athletic Training major.

Jean's parents are Bill and Peggy McNulty of Whitehall.

Birthdate: January 27, 1967.



STATISTICALLY:

Year	G-S	FG-FGA-PCT	FT-FTA-PCT	Pts	Avg	Rebs	Avg
1985-86	20-0	9- 30-.300	11- 16-.688	29	1.5	35	1.8
1986-87	31-0	110-243-.436	61- 93-.656	281	9.1	166	5.4
CAREER	51-0	119-273-.436	72-109-.661	310	6.1	201	3.9

— SOPHOMORES —



53 Kris Haas, 1V/RS

6-3, Center from Florence, MT

With more experience Kris will be another outstanding center in the Lady Griz program . . . Played in 22 games last season after redshirting the previous year . . . Will be solid backup for Lisa McLeod . . . At Florence High she was twice All-State and three times all-league . . . Team MVP as a senior . . . Alternate in the East-West All-Star game . . . Four letters in basketball and two in track . . .

Nursing major.

Kris is the daughter of Ken and Jan Weber of Florence.

Birthdate: August 15, 1967.

STATISTICALLY:

Year	G-S	FG-FGA-PCT	FT-FTA-PCT	Reb-Avg.	PF-D	PTS-Avg.	HI
1986-87	22-0	9-35-.257	8-20-.400	41-1.9	30-0	26-1.2	4



34, Linda Mendel 1V/RS

6-1, Center from Malta, MT

Linda lettered in the 1985-86 seasons, playing in 20 games . . . She redshirted last season . . . A two-time All-State player at Malta High School . . . Led her team to a 24-3 record in 1984 averaging 16.2 points and 14.0 rebounds a game . . . Played for the East in the annual all-star classic in Montana . . . Versatile athlete who won the state Class "B" 100-meter hurdles champion as a senior . . .

Linda is a general studies major.

Her parents are Eugene and Elaine Mendel of Malta.

Birthdate: August 26, 1967.

STATISTICALLY:

Year	G-S	FG-FGA-PCT	FT-FTA-PCT	Reb-Avg.	PF-D	PTS-Avg.	HI
1985-86	20-0	6-18-.333	5-12-.417	22-1.1	8-0	17-0.9	4

— FRESHMEN —

45 Marietta Bahnmitter, HS

6-0, Forward from Big Sandy, MT

Marietta will redshirt this season, gaining needed experience and strength . . . Three-time All-State player as a center (she will play forward for the Lady Griz) and averaged 24.0 points and 14.0 rebounds a game as a senior . . . Her senior season her team was the only undefeated team at any level in the state, compiling a 27-0 record in route to the Class "C" championship . . . During her career at Big Sandy her teams compiled a record of 102-6, winning 24 or more games all four years . . . Shot 59 percent from the field and 63 percent from the line and set the Class "C" record with 58 points in a game against Rocky Boy . . . Roy Lackner-coached teams were undefeated in league play, going 80-0 . . . Team MVP three times and team captain as a junior and senior . . . Also lettered in track and volleyball . . .

Business Administration major.

Her parents are Paul and Jewell Bahnmitter of Big Sandy.

Birthdate: December 16, 1968.



33 Marti Kinzler, HS/RS

5-11, Guard/Forward from Fairview, MT

A versatile player who can shoot from outside and work hard inside for rebounds, Marti redshirted last season . . . Will see plenty of action as a backup at both positions . . . At Fairview High she averaged 26 points and 13 rebounds a game for her 21-0 team . . . Three-time All-State and all-conference and 1984 Class "B" State MVP . . .

She is majoring in Health & Physical Education

Marti's parents are Gordon and Luella Kinzler of Fairview.

Birthdate: August 22, 1968.



Join Mick Holien, the "Voice of the Lady Griz," on KGVO Radio—1290 AM.

— FRESHMEN —



13 Colleen McNally, HS **5-5, Guard from Ovando, MT**

Colleen was a two-time All-State player at Seeley Swan High School . . . USA Today All-American as a senior . . . West representative in annual All-Star series . . . A four-time all-conference player for coach Les Gordon . . . Team captain in basketball and junior and senior . . . Lettered three times in track on a team which won three conference championships . . .

A Health & Physical Education major.

Colleen's parents are Wayne and Eloise McNally of Ovando.
Birthdate: December 16, 1968.



11 Shelli Sniffin, HS/RS **5-6, Guard from Lander, WY**

Redshirt last season . . . Excellent quickness and defensive ability . . . Recovering from knee injury suffered in the preseason last year . . . At Lander High School she was a three-time all-conference selection and an All-Stater as a junior . . . As a senior averaged 15 points, 5 assists and 4.5 steals a game . . .

She is a Psychology major.

Shelli is the daughter of Bill and Nancy Sniffin of Lander.
Birthdate: June 29, 1968.



51 Terre Tracy, HS **5-11, Forward from Great Falls, MT**

A two-year A-Stater at C.M. Russell High School, Terre's 1986 Rustler squad won the state championship and the Eastern Conference title . . . Her school's Most Valuable Player in both basketball and volleyball as a senior . . . Twice all-league and Eastern Conference MVP in '86 . . . Three letters in basketball and two in volleyball . . . Team captain in basketball and volleyball . . .

Terre is a General Studies major.

Her parents are Patrick and Patricia Tracy of Great Falls.
Birthdate: November 9, 1968.

1986-87 Results

Record	Opponent	UM-Opp	Attend	UM High Scorer(s)/Rebounder(s)
0-All MWC				
1-0	Cal-Berkeley	67-62	1,169	McLeod 17/Leibenguth 7
2-0	Eastern Montana	71-45	2,575	McLeod 16/8
3-0	Western Montana	89-46	401	McNulty 24/13
4-0	St. Mary's +	80-44	770	McLeod 17/McNulty, McLeod 9
	Calgary +	87-72	823	Leibenguth 19/10
5-0	Carroll College	72-50	1,500	Moede 18/McLeod 7
6-0	@ Nebraska	55-52	342	McNulty 12/Silliker 7
6-1	@ Creighton	47-70	421	McLeod 17/McLeod 8
7-1	Cal-Irvine	70-62	1,200	Silliker 13/McNulty 8
8-1	@ Nevada Reno	67-40	90	McLeod 19/McNulty 9
8-2	Washington %	56-68	1,476	McNulty 14/Leibenguth 9
9-2	Notre Dame %	50-48	1,386	McLeod 11/14
10-2	Colorado State	70-46	569	McNulty, Leibenguth 12/Silliker 5
11-2, 1-0	@ E. Washington*	76-71	480	McLeod 21/McLeod 14
12-2	@ Gonzaga	61-43	208	McNulty 12/McNulty 10
13-2, 2-0	Weber State*	65-48	858	Leibenguth 16/Leibenguth 6
14-2, 3-0	Idaho State*	85-61	950	McLeod 29/Leibenguth 8
15-2, 4-0	@ Idaho*	65-60	300	Leibenguth 25/Three with 6
16-2, 5-0	@ Boise State*	66-38	100	Moede 16/McNulty 13
17-2, 6-0	@ Montana State*	59-53	2,500	McLeod 18/Leibenguth 13
18-2, 7-0	Eastern Washington*	80-64	5,927	Leibenguth 18/McNulty 14
19-2	Gonzaga	69-54	908	Leibenguth 20/11
20-2, 8-0	@ Idaho State*	77-57	200	Williams 15/Leibenguth 12
21-2, 9-0	@ Weber State*	87-52	400	Ridgeway 19/Leibenguth 7
22-2, 10-0	Boise State*	63-48	1,062	McLeod 18/Silliker 9
23-2, 11-0	Idaho*	96-53	809	Moede 16/Strube 10
24-2, 12-0	Montana State*	58-41	6,500	McLeod, McNulty 14/Silliker 11
25-2	Montana State#	64-56	1,429	Leibenguth 17/McLeod 10
25-3	Eastern Washington #	74-77	1,947	McLeod 22/10
25-4	Arkansas \$	74-92	600	McLeod, McNulty 14, Leibenguth 11
26-4	DePaul \$	75-73	600	Moede 16/Leibenguth 10
26-5	Stephen F. Austin \$	68-78	600	McLeod 24/Leibenguth 12

+ Domino's Pizza Classic—Hosted by Montana% Seattle Times Classic# MWAC Tournament in Missoula, MT
\$ WNIT in Amarillo, TX

*Mountain West Conference Game

Final 1986-87 Lady Griz Statistics

Season Record: 26-5 (15-1 home; 9-2 away; 2-2 Neutral)

Player	G-S	Min-Avg.	FG-FGA-Pct.	FT-FTA-Pct.	REB-Avg.	PF-D	A-Avg.	TO	Blk	St	PTS-Avg.	High
Lisa McLeod	31-31	766.5-24.7	182-358-.508	84-144-.583	209-6.7	109-8	22-0.7	48	62	28	448-14.5	29
Marti Leibenguth	31-31	851.5-27.5	142-268-. 530	70-88- .795	221-7.1	80-2	86-2.8	68	22	65	354-11.4	25
Jean McNulty	31-0	638.0-20.6	110-243-.453	61-93-.656	166-5.4	66-1	13-0.4	32	28	32	281- 9.1	24
Dawn Silliker	31-31	777.0-25.1	108-257-.420	43-75-.573	160-5.2	96-4	71-2.3	79	9	31	259- 8.4	16
Kris Moede	31-1	624.5-20.1	97-215-.451	34-47-.723	66-2.1	30-0	43-1.4	64	2	34	229- 7.4	18
Margaret Williams	31-31	1019.0-32.9	85-187-.455	36-57-.632	65-2.1	46-2	209-6.7	105	3	68	207- 6.7	15
Natalie Chamberlain	30-30	708.0-23.6	78-205-.380	26-40-.650	52-1.7	28-0	46-1.5	36	1	36	184- 6.6	13
Karyn Ridgeway	31-0	512.0-16.5	53-115-.461	29-44-.659	58-1.9	43-0	74-2.4	51	7	25	135- 4.4	19
Laurie Strube	20-0	140.0- 7.0	14- 34-.412	5- 9-.556	33-1.7	10-0	1-0.1	8	4	4	33- 1.7	10
Kris Haasl	22-0	186.5- 8.5	9- 35-.257	8-20-.400	41-1.9	30-0	2-0.1	15	5	4	26- 1.2	4

UM TEAM REBOUNDS: 141

OPPONENT TEAM REBOUNDS: 144

UM Team Totals	31	6225	878-1921-.457	396-617-.642	1212-39.1	538-17	567-18.3	505	143	327	2156-69.5	
Opponent Totals	31	6225	662-1651-.397	400-586-.683	1081-34.9	571-17	386-12.5	573	64	233	1751-55.8	

Deadball Rebounds: UM 71, Opponents 75

3-Point Shots: UM 4 x 14 (.286) — Chamberlain 2 x 8, Moede 1 x 5,

Williams 1 x 1)

Opp: 27 x 80 (.338)

Women's Basketball Series Records

School	W	L	Series Began
Alaska-Anchorage.....	5	1	1977-78
Arkansas.....	0	2	1982-83
Boise State.....	16	6	1975-76
Brigham Young.....	1	2	1981-82
Calgary.....	2	0	1983-84
California.....	2	1	1982-83
Cal-Irvine.....	1	0	1986-87
Cal State-Fullerton.....	1	0	1982-83
Carroll College.....	11	1	1974-75
Central Washington.....	0	4	1974-75
Chapman.....	1	0	1985-86
Colorado.....	1	1	1978-79
Colorado State.....	3	1	1979-80
Creighton.....	0	1	1986-87
DePaul.....	1	0	1986-87
Drake.....	0	1	1981-82
Eastern Montana.....	6	3	1975-76
Eastern Oregon.....	0	1	1974-75
Eastern Washington.....	18	9	1974-75
Flathead Valley CC.....	5	7	1974-75
Florida.....	0	1	1984-85
Gonzaga.....	4	0	1980-81
College of Great Falls.....	7	0	1978-79
Idaho.....	9	5	1975-76
Idaho State.....	13	1	1978-79
Iowa.....	1	0	1980-81
Kansas State.....	0	1	1983-84
LaSalle.....	1	0	1985-86
Lethbridge.....	1	0	1975-76
Minnesota.....	1	0	1984-85
Montana State.....	25	5	1974-75
Montana Tech.....	7	0	1977-78
Nebraska.....	1	0	1986-87
Nevada-Reno.....	3	0	1983-84
North Dakota.....	1	1	1977-78
North Dakota State.....	1	0	1977-78
North Idaho.....	1	0	1974-75
Northeast Louisiana.....	0	1	1982-83
Northern Montana.....	6	0	1975-76
Notre Dame.....	1	0	1986-87
Oregon.....	0	7	1977-78
Oregon College of Education.....	0	2	1977-78
Oregon State.....	1	7	1976-77
Pacific.....	1	1	1982-83
Pacific Lutheran.....	0	1	1975-76
Penn State.....	0	1	1983-84
Pepperdine.....	1	0	1985-86
Portland State.....	12	3	1975-76
Puget Sound.....	1	0	1984-85
Rocky Mountain.....	3	0	1974-75
St. Mary's (Calif.).....	3	0	1980-81
San Francisco.....	1	1	1980-81
San Jose St.....	0	1	1985-86
Santa Clara.....	1	0	1984-85

Women's Basketball Series Records (cont.)

School	W	L	Series Began
Seattle University.....	3	2	1978-79
Seattle-Pacific.....	0	2	1975-76
Southern California.....	0	2	1983-84
Stanford.....	2	0	1980-81
Stephen F. Austin.....	0	1	1986-87
Utah.....	3	0	1982-83
Utah State.....	3	2	1978-79
Washington.....	7	9	1974-75
Washington State.....	12	8	1974-75
Wayland Baptist.....	0	1	1981-82
Weber State.....	14	2	1977-78
West Texas State.....	0	1	1984-85
West Virginia.....	0	1	1984-85
Western Montana.....	5	0	1974-75
Whitworth.....	1	0	1975-76
Wyoming.....	2	0	1983-84



Robin Selvig

Year-by-Year Records

Season	Coach	Record
1974-75	Diane Westbrook.....	11- 8
1975-76	Barbara Eisenbarth	10-13
1976-77	Eddye McClure.....	4-14
1977-78	Eddye McClure.....	7-13
1978-79	Robin Selvig.....	13-13
1979-80	Robin Selvig.....	19-10
1980-81	Robin Selvig.....	22- 8
1981-82	Robin Selvig.....	22- 5
1982-83	Robin Selvig.....	26- 4
1983-84	Robin Selvig.....	27- 4
1984-85	Robin Selvig.....	22-10
1985-86	Robin Selvig.....	27-4
1986-87	Robin Selvig.....	26-5
Totals.....		236-111

The Record Book

TEAM RECORDS

Season:

Most Wins—27, 1983-84, 1985-86
Scoring Average—70.8, 1984-85
Field Goals—878, 1986-87
Field Goal Attempts—1,957, 1984-85
Field Goal Percentage—.473, 1985-86
Free Throws—524, 1984-85
Free Throw Attempts—750, 1984-85
Free Throw Percentage—.699, 1984-85
Rebounds—1,381, 1980-81
Rebounding Average—46.7, 1979-80
Assists—567, 1986-87
Steals—337, 1980-81
Blocked Shots—143, 1986-87
Defensive Scoring Average—53.5, 1981-82
Winning Percentage—.871, (27-4), 1983-84

Single Game:

Most Points—96 vs. Idaho, Feb. 22, 1987
Fewest Points Allowed—28 vs. Carroll College, Nov. 22, 1982
Most Rebounds—66 vs. Montana State, Feb. 12, 1981 and vs. Utah State, Jan. 4, 1982

INDIVIDUAL RECORDS

Career:

Most Points—1,248, Doris Deden Hasquet, 1980-84
Most Rebounds—856, Doris Deden Hasquet, 1980-84
Most Assists—488, Cheri Bratt, 1980-84
Most Steals—301, Cheri Bratt, 1980-84
Most Blocked Shots—133, Doris Deden Hasquet, 1980-84

Season:

Most Points—484, Jill Greenfield, 1980-81
Highest Scoring Average—16.1, Jill Greenfield, 1980-81
Most Field Goals—191, Jill Greenfield, 1980-81
Most Field Goal Attempts—395, Jill Greenfield, 1980-81
Highest Field Goal Percentage—.572, Marti Leibenguth, 1985-86
Most Free Throws—117, Sharla Muralt, 1984-85
Most Free Throw Attempts—166, Sharla Muralt, 1984-85
Highest Free Throw Percentage—.852, Janet Ruetten, 1979-80
Most Rebounds—318, Jill Greenfield, 1980-81
Highest Rebounding Average—10.6, Jill Greenfield, 1980-81
Most Assists—209, Margaret Williams, 1986-87
Most Steals—94, Cheri Bratt, 1980-81
Most Blocked Shots—62, Lisa McLeod, 1986-87

Single Game:

Most Points—32, Jill Greenfield vs. Boise State, Feb. 9, 1980
Most Rebounds—19, Three different players
Most Assists—11, Margaret Williams vs. Montana
11, Karyn Ridgeway vs. W. Montana, Dec. 1, 1986

ATTENDANCE

6,112 vs. Eastern Washington, Jan. 10, 1986

Career Leaders

SCORING:

1. Doris Deden Hasquet.....	1980-84	1,248
2. Cheri Bratt	1980-84	1,196
3. Anita Novak	1981-85	1,158
4. Sharla Muralt.....	1982-86	1,157
5. Barb Kavanagh.....	1981-85	1,013
6. Jill Greenfield.....	1979-81	933
7. MARTI LEIBENGUTH	1984-	861
8. DAWN SILLIKER	1984-	814
9. Linda Deden Smith	1976-80	813
10. Juli Eckmann	1979-83	799
11. Margaret Williams.....	1982-87	713
12. LISA MCLEOD	1985-	635
13. Sandy Selvig.....	1978-81	615
14. Cheryl Sandbak.....	1975-79	591
15. Janet Ruetten.....	1979-81	571
16. Sheila Sullivan.....	1975-79	531

REBOUNDED:

1. Doris Deden Hasquet.....	1980-84	856
2. Anita Novak	1981-85	791
3. Sharla Muralt.....	1982-86	729
4. Cheri Bratt.....	1980-84	657
5. Linda Deden Smith	1976-80	626
6. Jill Greenfield.....	1979-81	570
7. Sandy Selvig.....	1978-81	515
8. MARTI LEIBENGUTH	1984-	511
9. DAWN SILLIKER	1984-	489
10. Candie Stevens	1976-80	474
11. Shari Thesenvitz	1980-83	439
12. LISA MCLEOD	1985-	360
13. Juli Eckmann.....	1979-83	295
14. Sheila Sullivan.....	1975-79	283
15. CHERYL BRANDELL	1984-	275
16. Barb Kavanagh.....	1981-85	249

ASSISTS:

1. Margaret Williams.....	1982-87	511
2. Cheri Bratt	1980-84	488
3. Barb Kavanagh.....	1981-85	378
4. CHERYL BRANDELL.....	1984-	213
5. Juli Eckmann.....	197-83	208

Bold face indicates current player.

THE OPPONENTS

EASTERN MONTANA COLLEGE

Nov. 28th in Missoula

Location: Billings, MT
Nickname: Lady Yellowjackets
Conference: Continental Divide
Athletic Director: Woody Hahn
SID: News Media Services
SID Phone: 406-657-2268
1986-87 Record: 18-11
Series Record: 5-3, Montana

Head Coach: Tom Mahon
Coaches' Record: 1st year
Ret. Starters: 3
Key Returnee(s): Evonne Goroski, 5-9, F, Sr., 15.6ppg, 5.6rpg; Mary Anderson, 5-10, F., Sr., 9.3ppg, 5.4rpg; Becky Mateja, 5-7, G, Jr., 6.4 ppg.

LAMAR UNIVERSITY—Domino's Pizza Classic

Dec. 4-5 in Missoula

Location: Beaumont, TX
Nickname: Lady Cardinals
Conference: American South Athletic
Athletic Director: Pat Foster
SID: Kathy J. Portie
SID Phone: 409-880-2323
1986-87 Record: 2-24

Head Coach: Al Barbre
Coaches' Record: 2-24, 1 yr.
Ret. Starters: 4
Key Returnee(s): Teresa Hornsby, 5-5, G, 8.8ppg; Tammy Winsmann, 5-8, F, Sr., 16.8ppg, 7.5rpg.

(The Lady Griz will play either Oral Roberts or Oregon, depending on first night results)

CAL-IRVINE

Dec. 12th in Irvine, CA

Location: Irvine, CA
Nickname: Anteaters
Conference: Pacific Coast Athletic
Athletic Director: Dr. John E. Caine
SID: Bob Olson
SID Phone: 714-856-5814
1986-87 Record: 14-15

Head Coach: Dean Andrea
Coaches' Record: 132-119, 9 yrs.
Ret. Starters: 5
Key Returnee(s): Natalie Crawford, 6-6, C, Sr., 11.4ppg, 7.9rpg; Zalina Walton, 5-10, F, Sr., 11.2ppg, 3.4rpg; Cheryl Hoffman, 5-7, G, Sr., 10.1ppg, 3.5rpg.

U.S. INTERNATIONAL

Dec. 14th in San Diego, CA

Location: San Diego, CA
Nickname: Lady Gulls
Conference: Independent
Athletic Director: Al J. Palmiotto
SID: Blair Swain
SID Phone: 619-693-4737
1986-87 Record: 16-10

Head Coach: Cassie Macias
Coaches' Record: 16-10, 1 yr.
Ret. Starters: 4
Key Returnee(s): Sonya Carter, 5-10, G, Jr.; Fiona Murray, 5-4, C, Sr.; Amanda Spry, 6-2, G-F, Sr.

WASHINGTON STATE

Dec. 19th in Missoula

Location: Pullman, WA
Nickname: Cougars
Conference: Pacific-10
Athletic Director: Jim Livengood
SID: Scott Hill
SID Phone: 509-335-0270
1986-87 Record: 10-18
Series Record: 16-12, Montana

Head Coaches: Harold Rhodes
Coaches' Record: 49-92, 5 yrs.
Ret. Starters: 4
Key Returnee(s): Penny Bowden, 5-5, G, Sr., 13.6ppg, 6.3rpg; Cathy Gonzales, 5-10, G, Jr., 12.6ppg; Jonni Gray, 6-0, F, Jr., 12.9ppg, 6.1rpg.

THE OPPONENTS

CREIGHTON UNIVERSITY

Dec. 22nd in Missoula

Location: Omaha, NE
Nickname: Lady Jays
Conference: High Country Athletic
Athletic Director: Don Ledy
SID: Mike Reasoner
SID Phone: 402-280-2720
1986-87 Record: 23-7
Series Record: 1-0, Creighton

Head Coach: Bruce Rasmussen
Coaches' Record: 115-85, 7 yrs.
Ret. Starters: 4
Key Returnee(s): Pam Gradoville, 6-0, F, Sr., 22.0ppg, 8.4rpg; Tanya Warren, 5-5, G, Sr., 18.7ppg, 3.8rpg; Gayle Hiemstra, 5-10, F, Sr., 9.6ppg, 4.6rpg.

UNIVERSITY OF WASHINGTON

Dec. 28th in Missoula

Location: Seattle, WA
Nickname: Huskies
Conference: Pacific-10
Athletic Director: Mike Lude
SID: Jeanne Grainger
SID Phone: 206-543-2230
1986-87 Record: 24-6
Series Record: 9-7, Washington

Head Coach: Chris Gobrecht
Coaches' Record: 109-98, 7 yrs.
Ret. Starters: 4
Key Returnee(s): Yvette Cole, 6-1/2, G-F, So., 11.2ppg, 5.0rpg; Lisa Raschkow, 5-7 1/2, G, Sr., 12.2ppg; Aileen McManus, 5-9 1/2, G, Jr., 11.8ppg.

UNIVERSITY OF WYOMING

Jan. 2 in Missoula

Location: Laramie, WY
Nickname: Cowgirls
Conference: High Country Athletic
Athletic Director: Paul Roach
SID: Doug Skipper
SID Phone: 307-766-2256
1986-87 Record: 15-12
Series Record: 2-0, Montana

Head Coach: Chad Levin
Coaches' Record: 97-44, 5 yrs.
Ret. Starters: 4
Key Returnee(s): Christine Fairless, 5-11, G, Jr., 18.9ppg, 1.7rpg; Kim Buston, 5-10, F, So., 10.9ppg, 5.3rpg.

GONZAGA UNIVERSITY

Jan. 4th in Spokane

Location: Spokane, WA
Nickname: Bulldogs
Conference: West Coast Athletic
Athletic Director: Dan Fitzgerald
SID: Dale Goodwin
SID Phone: 509-328-4220
1986-87 Record: 11-16
Series Record: 4-0, Montana

Head Coach: Mike Petersen
Coaches' Record: 32-36, 3 yrs.
Ret. Starters: 4
Key Returnee(s): Tammy Tibbles, 5-9, G, Sr., 22.1ppg, 4.2rpg; Carla Curfman, 5-10, F, Jr., 12.1ppg, 6.7rpg.

Twelve of the 15 Lady Griz players are from Montana (there is one each from Illinois, Washington and Wyoming). Squad breakdown: 4 seniors, 4 juniors, two sophomores, five freshman.

THE OPPONENTS

UNIVERSITY OF UTAH

Jan. 9th in Salt Lake, UT

Location: Salt Lake, UT
Nickname: Lady Utes
Conference: High Country Athletic
Athletic Director: Jim Copeland
SID: Liz Abel
SID Phone: 801-581-3511
1986-87 Record: 20-7
Series Record: 3-0, Montana

Head Coach: Elaine Elliott
Coaches' Record: 76-39, 5 yrs.
Ret. Starters: 3
Key Returnee(s): Donna Holzworth, 6-4, C, Sr., 11.5ppg, 7.1rpg; Tiffany Rogers, 6-2, F, Sr., 8.8ppg, 5.8rpg.

UNIVERSITY OF NEVADA-RENO

Jan. 14th in Reno/Feb. 12th in Missoula

Location: Reno, NV
Nickname: Wolf Pack
Conference: Mountain West
Athletic Director: Chris Ault
SID: Paul Stuart
SID Phone: 702-784-4567
1986-87 Record: 9-19
Series Record: 3-0, Montana

Head Coach: Anne Hope
Coaches' Record: 135-86, 8 yrs.
Ret. Starters: 2
Key Returnee(s): Dawn Pitman, 6-0, F, So., 11.5ppg, 8.4rpg; Denis Harris, 5-6, G, Sr., 7.3ppg, 4.6rpg.

NORTHERN ARIZONA UNIVERSITY

Jan. 16th in Flagstaff/Feb. 13th in Missoula

Location: Flagstaff, AZ
Nickname: Lady Lumberjacks
Conference: Mountain West
Athletic Directors: David C. Brown/
Tom Jurich
SID: Vicki Uthe
SID Phone: 602-523-6330
1986-87 Record: 9-18
Series Record: First Meeting

Head Coach: Dave Brown
Coaches' Record: 73-58, 5 yrs.
Ret. Starters: 3
Key Returnee(s): Dana Brickhouse, 6-2, C, Sr., 10.6ppg, 6.2rpg.

EASTERN WASHINGTON UNIVERSITY

Jan. 22nd in Missoula/Feb. 21st in Cheney

Location: Cheney, WA
Nickname: Eagles
Conference: Mountain West
Athletic Director: Sunya Herold
SID: Jim Price
SID Phone: 509-359-6334
1986-87 Record: 18-12
Series Record: 18-9, Montana

Head Coach: Bill Smithpeters
Coaches' Record: 215-115, 11 yrs.
Ret. Starters: 4
Key Returnee(s): Sony Gauginger, 5-8, G, Sr., 5.2ppg, 4.8rpg; Lisa Danner, 6-1, F, Jr., 12.4ppg, 7.3rpg; Susan Smith, 5-8, F, So., 12.0ppg.

UNIVERSITY OF IDAHO

Jan. 23rd in Missoula/Feb. 19th in Moscow

Location: Moscow, ID
Nickname: Lady Vandals
Conference: Mountain West
Athletic Director: Kathy Clark
SID: Chris Schulte
SID Phone: 208-885-0200
1986-87 Record: 8-19
Series Record: 9-5, Montana

Head Coach: Laurie Turner
Coaches' Record: 85-52, 5 yrs.
Ret. Starters: 4
Key Returnee(s): Sheri Lehmer, 6-2, C, Jr., 11.5ppg, 5.4rpg; Christy Van Pelt, 5-11, F, Jr., 8.1ppg, 7.3rpg.

THE OPPONENTS

BOISE STATE UNIVERSITY

Jan. 29th in Boise/Feb. 27th in Missoula

Location: Boise, ID
Nickname: Broncos
Conference: Mountain West
Athletic Director: Carol Ladwig
SID: Lori Orr Hays
SID Phone: 208-385-3438
1986-87 Record: 10-17
Series Record: 16-6, Montana

Head Coach: Tony Oddo
Coaches' Record: 36-44, 3 yrs.
Ret. Starters: 4
Key Returnee(s): Ann Jensvold, 6-1, F, So., 10.0ppg, 5.4rpg; Missy Dallas, 5-4, G, Sr., 9.8ppg.

IDAHO STATE UNIVERSITY

Jan. 30 in Pocatello/Feb. 29th in Missoula

Location: Pocatello, ID
Nickname: Bengals
Conference: Mountain West
Athletic Director: Tom Jewell
SID: Dave Geringer
SID Phone: 208-236-2621
1986-87 Record: 10-15
Series Record: 13-1, Montana

Head Coach: Ted Anderson
Coaches' Record: 102-57, 6 yrs.
Ret. Starters: 5
Key Returnee(s): Alison Verona, 5-11, F, Sr., 17.6ppg, 9.2rpg; Coryna Truitt, 6-1, F, Jr., 11.7ppg, 6.1rpg.

WEBER STATE COLLEGE

Feb. 1st in Ogden/Feb. 26th in Missoula

Location: Ogden, UT
Nickname: Lady Wildcats
Conference: Mountain West
Athletic Director: Gary Crompton
SID: Nan Holyoak
SID Phone: 801-626-6012
1986-87 Record: 11-16
Series Record: 14-2, Montana

Head Coach: Joan Campbell
Coaches' Record: 11-16, 1 yr.
Ret. Starters: 1
Key Returnee(s): Katie Weyenberg, 6-2, C, Jr., 15.7ppg, 7.3rpg.

MONTANA STATE UNIVERSITY

Feb. 6th in Missoula/March 5th in Bozeman

Location: Bozeman, MT
Nickname: Lady Bobcats
Conference: Mountain West
Athletic Director: Ginny Hunt
SID: Mike Regli
SID Phone: 406-994-5133
1986-87 Record: 16-12
Series Record: 25-5, Montana

Head Coach: Gary Schwartz
Coaches' Record: 91-46, 5 yrs.
Ret. Starters: 2
Key Returnee(s): Lynne Andrew, 6-0, F, Sr., 15.4ppg, 9.0rpg; Liz Holz 5-5, G, Sr., 10.7ppg, 2.0rpg.

Dahlberg Arena
Press Box Phone:
406-243-4281

1987-1988 Schedule

Nov. 28	Eastern Montana	Home	7:30 p.m.
Dec. 4 & 5	Domino's Pizza Classic (Oregon, Oral Roberts, Lamar)	Home	7-9:00 p.m.
Dec. 12	California—Irvine	Irvine	8:30 p.m.
Dec. 14	U.S. International	San Diego	8:30 p.m.
Dec. 19	Washington State	Home	6:00 p.m.
Dec. 22	Creighton	Home	7:30 p.m.
Dec. 28	Washington	Home	7:30 p.m.
Jan. 2	Wyoming	Home	2:00 p.m.
Jan. 4	Gonzaga	Spokane	8:30 p.m.
Jan. 9	Utah	Salt Lake	5:15 p.m.
Jan. 14	Nevada-Reno*	Reno	4:00 p.m.
Jan. 16	Northern Arizona*	Flagstaff	4:00 p.m.
Jan. 22	Eastern Washington	Home	7:30 p.m.
Jan. 23	Idaho*	Home	6:00 p.m.
Jan. 29	Boise State*	Boise	7:30 p.m.
Jan. 30	Idaho State*	Pocatello	7:30 p.m.
Feb. 1	Weber State*	Ogden	7:30 p.m.
Feb. 6	Montana State*	Home	7:30 p.m.
Feb. 11	Nevada-Reno*	Home	6:00 p.m.
Feb. 13	Northern Arizona*	Home	6:00 p.m.
Feb. 19	Idaho*	Moscow	7:30 p.m.
Feb. 21	Eastern Washington*	Cheney	2:00 p.m.
Feb. 26	Weber State*	Home	7:30 p.m.
Feb. 27	Boise State*	Home	6:00 p.m.
Feb. 29	Idaho State*	Home	7:30 p.m.
March 5	Montana State*	Bozeman	7:30 p.m.
March 11-12	MOUNTAIN WEST TOURN.	TBA	TBA

*Mountain West Conference Game — All times are local



Dawn Silliker



Kris Moede

CREDITS—

This brochure was written and edited by Sports Information Director Dave Guffey.
Photography by Howard Skaggs. Cover photo by Mark Bryant.