

Spring 2-1-2019

ANTY 210N.01: Intro to Physical Anthropology

Kirsten Green

University of Montana, Missoula

Let us know how access to this document benefits you.

Follow this and additional works at: <https://scholarworks.umt.edu/syllabi>

Recommended Citation

Green, Kirsten, "ANTY 210N.01: Intro to Physical Anthropology" (2019). *Syllabi*. 9201.
<https://scholarworks.umt.edu/syllabi/9201>

This Syllabus is brought to you for free and open access by the Course Syllabi at ScholarWorks at University of Montana. It has been accepted for inclusion in Syllabi by an authorized administrator of ScholarWorks at University of Montana. For more information, please contact scholarworks@mso.umt.edu.

ANTHROPOLOGY 210N

Introduction to Physical Anthropology
Spring 2019

Dr. Kirsten Green

Email: kirsten.green@umontana.edu

Office: SS 217

Office Hours:

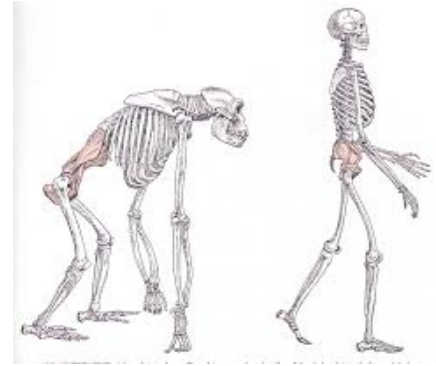
Wednesday 11:00-12:00, 1:00-2:00, or by appointment

TA: Sammy Ramey

Email: Samantha.ramey@umontana.edu

Office: SS 250

Office Hours: Monday 2:00-4:00, Friday 10:00-11:00, or by appointment



COURSE DESCRIPTION

This course is designed to introduce students to the main subfields of Physical Anthropology.

The course is organized into four sections:

1. We will review the processes of evolution and natural selection, including discussion of evolutionary fitness, adaptation, basic inheritance, and population genetics.
2. We will discuss the diversity, evolution, ecology and behavior of non-human primates, and consider how insights from the study of non-human primates can enrich our understanding of humans.
3. We will trace the morphological and technological evolution of humans from the earliest bipedal woodland apes through Neanderthals and modern humans.
4. We will consider how an evolutionary framework can enrich our understanding of modern human genetic, phenotypic, and cultural diversity and behavior.

By the end of the course, students should understand the broad principles and patterns characterizing social, behavioral, and morphological aspects of human evolution.

GENERAL INFORMATION

Lectures are on Monday, Wednesday, and Friday from 9:00-9:50am in LA 308.

If you have questions, I encourage you to contact your instructor via email, which is the fastest and best way to get in touch. Please take into account that your instructor should be treated politely in your correspondence.

TEXTBOOK

How Humans Evolved. 8th Edition (2018) Robert Boyd and Joan Silk. New York: W. W. Norton and Company.

Please read the assigned chapters in the textbook **prior** to attending each lecture. Note that while lecture topics will reference readings, some topics and examples presented in lecture are not included in the textbook, and vice versa.

Earlier editions of the text, published before 2018, are available and can be used by students, but please note that the readings outlined for each class are based on the 2018 edition and modifications may need to be made. Any material not included in earlier editions is fair game for exams.

GRADES

The final grades for the course **will be curved** as will individual exams if necessary. Grading includes the +/- grading system (i.e. A, A-, B+, B, B-, etc...). Grades will be calculated as followed:

- Genetics Handout: 10%
- Midterm Exam #1: 20%
- Midterm Exam #2: 20%
- Midterm Exam #3: 20%
- Final Exam (cumulative): 30%

Email versus Paper: While I appreciate saving paper, I DO NOT accept emailed assignments. Please print off assignments and hand them in during the class period they are due. Emailed assignments will be considered late and not accepted.

Make-up or missed exams: Exams will **not** be re-administered unless approval is obtained at least 24 hours prior to the exam, with a legitimate excuse (such as health reasons, with a doctor's confirmation). If you miss an exam you must contact your professor within 24 hours, with a documented excuse, in order to obtain permission to take the exam. If you know you will miss an exam ahead of time you must make an appointment at least **two weeks** in advance to take it early.

Late assignments: Will not be accepted, unless you have a documented, legitimate excuse and have contacted your instructor within **24 hours** of the due date. Please contact your instructor well in advance if you know there will be a problem submitting your assignment. Email submissions will **not** be accepted.

MULTIMEDIA INFORMATION

Course website: There is a Moodle webpage for this course to which all enrolled students have access. You can log onto this website at <http://umonline.umt.edu>. Students are advised to check the website regularly (at least once a week) for announcements, supplemental information, grades, and related links.

Lecture slides: Files containing pdf's of the lecture slides will be available on the course website at the beginning of each week and will remain on the course website for the duration of the semester. It is **highly recommended that students print or bring electronic copies of the slides to lecture** to take notes on.

Warning: Lecture slides will be posted in the hope they will provide a convenient resource for you to review sections that you may wish to see again, or to view lectures you may have missed due to unavoidable (and rare) absences from lecture. Please be aware that there is always a

chance that technical problems may interfere with the website and lecture slides. Do not wait until the night before an exam to log on in search of materials.

HOW TO SUCCEED IN CLASS

- 1) Attend every lecture and take notes on the material.
- 2) Ask questions when confused about a topic or concept, either in class or during office hours, well before an exam.
- 3) Complete readings before class, annotating or taking notes while reading.
- 4) Participate in discussions of the material, either in class or with the TA and instructor.
- 5) Maintain a positive, self-motivated attitude.

CODE OF ACADEMIC CONDUCT

With regard to academic dishonesty, this class has a zero-tolerance policy and will promptly deal with any acts of academic dishonesty (cheating, plagiarism, or unauthorized help on assignments, etc.) according to university policy. For further information on what falls into these categories see: http://life.umt.edu/vpsa/student_conduct.php. If you have questions or concerns, please feel free to contact your professor.

STUDENTS WITH DISSABILITIES

Students with disabilities may request reasonable modifications by contacting your instructor. The University of Montana assures equal access to instruction through collaboration between students with disabilities, instructors, and Disability Services for Students (DSS). “Reasonable” means the University permits no fundamental alterations of academic standards or retroactive modifications. (For other options see <http://www.umt.edu/disability>).

ANTHROPOLOGY 210			
Week	Date	Topic	Reading/assignments
1	1/11	Introduction & Overview	Course syllabus
2	1/14	Introduction to Evolution	Chapter 1
	1/16	Definition of a species & EEA	Chapter 4
	1/18	Natural Selection & Adaptation	
3	1/21	NO CLASS – MLK Jr. Day	
	1/23	Altruism & Inclusive Fitness	Pgs. 169-170
	1/25	Mendel's Pea Plants	Chapter 2
4	1/28	DNA & what it does	
	1/30	Population Genetics (Hardy-Weinberg)	Chapter 3
	2/1	Forces of Evolution	Genetics Handout Due
5	2/4	Anthropological Genetics	
	2/6	Review Jeopardy	
	2/8	MIDTERM EXAM #1	On Moodle
6	2/11	Intro to Primates & Geologic Perspective	Pgs 108-116
	2/13	Primate Origins	Chapter 9
	2/15	Of Guts and Teeth	Pgs 116-118
7	2/18	NO CLASS – President's Day	
	2/20	Jarman-Bell & Fallback foods	Pgs 125-135
	2/22	Life History & Sexual Selection	Chapter 8
8	2/25	Mating Systems	Chapter 6
	2/27	Apes	Pgs 223-230
	3/1	Fossil Dating	Pgs 211-214
9	3/4	Review Jeopardy	
	3/6	MIDTERM EXAM #2	On Moodle
	3/8	Bipedal Apes	Chapter 10
10	3/11	Australopithecines	
	3/13	Hominin Diversification	
	3/15	Origins of Homo	Chapter 12
11	3/18	Neanderthals	
	3/20	Early modern humans	Chapter 13
	3/22	Hominin tool use	Chapter 11

12	3/25- 3/29	NO CLASS – SPRING BREAK	
13	4/1	Review Jeopardy	
	4/3	MIDTERM EXAM #3	On Moodle
	4/5	History of the concept of race	
14	4/8	Craniology & Eugenics	
	4/10	Phenotypic Traits I	Chapter 14
	4/12	Phenotypic Traits II	Chapter 14
15	4/15	Cultural Evolution	Chapter 15
	4/17	Evolution & Modern Human Behavior & Human Fairness	Chapter 16
	4/19	Human Mate Choice	
16	4/22	Human Parenting & Demographic Trans.	
	4/24	Forensic Anthropology I	
	4/26	Final Review Jeopardy	
16	4/29- 5/3	FINAL – On Moodle	

*Small changes in the above calendar and syllabus are at the discretion of the course instructor and will be announced during class.