

University of Montana

## ScholarWorks at University of Montana

---

Lady Griz Volleyball Media Guides, 1979-2008

Intercollegiate Athletics

---

1992

### Lady Griz Volleyball Media Guide, 1992

University of Montana (Missoula, Mont. : 1965-1994). Athletics Department

Follow this and additional works at: [https://scholarworks.umt.edu/ladygrizvolleyball\\_mediaguides](https://scholarworks.umt.edu/ladygrizvolleyball_mediaguides)

**Let us know how access to this document benefits you.**

---

#### Recommended Citation

University of Montana (Missoula, Mont. : 1965-1994). Athletics Department, "Lady Griz Volleyball Media Guide, 1992" (1992). *Lady Griz Volleyball Media Guides, 1979-2008*. 12.  
[https://scholarworks.umt.edu/ladygrizvolleyball\\_mediaguides/12](https://scholarworks.umt.edu/ladygrizvolleyball_mediaguides/12)

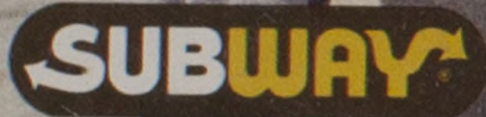
This Guide is brought to you for free and open access by the Intercollegiate Athletics at ScholarWorks at University of Montana. It has been accepted for inclusion in Lady Griz Volleyball Media Guides, 1979-2008 by an authorized administrator of ScholarWorks at University of Montana. For more information, please contact [scholarworks@mso.umt.edu](mailto:scholarworks@mso.umt.edu).





The University of  
**Montana**

1991  
Big Sky Conference  
Champions



OFFICIAL SPONSOR

*The stuff  
that dreams  
are made of!*

1992 Lady Griz Volleyball  
Media Guide



# THE UNIVERSITY OF MONTANA QUICK FACTS

LOCATION .....	Missoula, Montana
CHARTERED .....	February 17, 1893
ENROLLMENT .....	10,000
PRESIDENT .....	Dr. George Dennison
ATHLETIC DIRECTOR .....	Bill Moos (406) 243-5331
ASSOCIATE ATHLETIC DIRECTOR .....	Kathy Noble (406) 243-5331
NCAA FACULTY REPRESENTATIVE .....	Dr. Robert Lindsay
SID .....	Linda McCarthy (406) 243-5414 or Home (406) 728-4054
SPORTS INFORMATION FAX NUMBER .....	(406) 243-6859
PRESS ROW PHONE NUMBER .....	(406) 243-4281
NICKNAME .....	Lady Griz
COLORS .....	Copper, Silver & Gold
HOME COURT .....	Dahlberg Arena (9,057)
CONFERENCE .....	Big Sky
1991 CONFERENCE RECORD & FINISH .....	16-0/1st
1991 OVERALL RECORD & FINISH .....	26-4/NCAA First Round
HEAD COACH .....	Dick Scott (Montana State, 1965)
RECORD AT MONTANA .....	294-208 (14 Years)
COLLEGIATE RECORD .....	<del>404</del> 405-228 (19 Years)
ASSISTANT COACH .....	Donna Finney (Washington State, 1989)
GRADUATE ASSISTANT .....	Ann Schwenke (Montana, 1992)
VOLLEYBALL OFFICE PHONE .....	(406) 243-5411
RETURNING LETTER WINNERS & STARTERS .....	6 & 2
MAILING ADDRESS	Department of Intercollegiate Athletics Harry Adams Field House The University of Montana Missoula, Montana 59812

## TABLE OF CONTENTS

Page		
1	The University of Montana	
2	UM Administration	
3-4	Athletic Personnel	
5	Head Coach Dick Scott	
6	Assistant Coaches	
7	1991 Results & Year-by-Year Records	
8	1992 Schedule	
9	1992 Lady Griz Outlook	
10-12	Lady Griz Record Book	
13	UM Volleyball Series Records	
14	Understanding Volleyball	
15	1992 Lady Griz Team Photo & Roster	
16	Linde Eidenberg & Karen Goff	
17	Gypsy Hoover & Sarah Hurlburt	
18	Kira Kneitel & Trish Lake	
19	Andrea McHugh & Jennifer Moran	
20	Yuki Morita & Jennifer Patera	
21	Michelle Peterson & Inga Swanson	
22	Sheri Vinion & Heidi Williams	
23-24	Former UM Volleyball Greats	
25-28	Lady Griz Opponents	

This media guide was written and edited by Assistant SID Linda McCarthy. Photos by Todd Goodrich and Howard Skaggs. Cover art by Neal Wiegert.



# THE UNIVERSITY OF MONTANA

## *Chartered February 17, 1893*



The University of Montana in Missoula is located in a mountain forest setting in beautiful Western Montana. It is halfway between Glacier and Yellowstone national parks.

Four wilderness areas are located near Missoula. The natural surroundings offer excellent opportunities for hunting, fishing, backpacking, river floating, camping and other outdoor recreational pursuits. Two excellent winter ski areas are located within minutes of the university. Several other ski areas are only a couple of hours away by car. UM owns and operates its own golf course adjacent to campus.

Chartered February 17, 1893, The University of Montana is one of the West's pioneers in education. The school opened in Sep-

tember 1895 with 50 students enrolling the first day. Located on 201 acres at the base of Mount Sentinel, UM has grown from 50 students and seven faculty members to a present enrollment of 10,000 and approximately 450 full-time faculty positions.

Through its history, The University of Montana has sustained a high standard of academic excellence in teaching, research and service.

UM offers associate of arts degrees in two areas and bachelor's in 58 fields. It offers master's degrees in 54 programs and doctoral degrees in 13.

The College of Arts and Sciences, which is the core of the university, includes a full range of programs and courses in the life sciences, physical sciences, social sciences and humanities. The college also offers curricula in interdisciplinary fields, ranging from ethnic studies to interdepartmental studies.

Seven professional schools complete the academic program - Business Administration, Fine Arts, Journalism, Education, Forestry, Law, and Pharmacy and Allied Health Sciences.

The aim of the university is to provide its students with relaxing and meaningful learning experiences with the best facilities possible. The administration, faculty and staff strive for this goal.



## — ADMINISTRATION —



**GEORGE DENNISON**  
*President*

George Dennison became the 16th president of The University of Montana on August 15, 1990. Before coming to UM, Dennison was provost and vice president for academic affairs at Western Michigan University in Kalamazoo, a post he had held since 1987. He is a former resident of Kalispell and a UM alumnus. A history professor, he earned two degrees in that field at UM: a master's in 1963 and a bachelor's with highest honors in 1962. In 1967, he completed a doctorate in history at the University of Washington. Before joining Western Michigan's administration, he held a number of positions at Colorado State University between 1969 and 1987. They include history professor, admissions and records director, associate academic vice president, graduate school associate dean and associate dean of the college of the arts, humanities and social sciences. Dennison and his wife, Jane, also from Kalispell, have two children.



**KATHY NOBLE**  
*Associate Athletic Director*

Kathy has been the associate athletic director at Montana the past five years. In 1989 she served as interim athletic director, overseeing two I-AA football playoff games, as well as the Big Sky Conference women's basketball tournament, and an NCAA first-round game in women's basketball. She was instrumental in UM's bid for a Women's West Regional Basketball Tournament in March of 1993. Most recently Noble was the Assistant Director of the Department of Parks, Recreation and Public Facilities in Miami, Florida. She has 17 years of experience in college administration. She was the Associate Athletic Director at the University of Miami from 1983-86. Prior to that she was an Academic Counselor in athletics at Boise State (1982-83) and the Residence Hall Director at Washington State (1976-82). Noble earned her B.A. degree in Social Sciences at Central Washington University in 1971. She received a Master's Degree in Counseling at Washington State in 1979 and is currently a Ph.D. candidate in Counseling at WSU.



**GARY HUGHES**  
*Manager of Athletic Services*

Gary is the veteran of Montana's athletic department, and is starting his 27th year at UM. He became athletic ticket manager in 1966, and was appointed Manager of Athletics Facilities and Revenue in 1978. He manages all scheduling in Adams Field House, Washington-Grizzly Stadium and Dornblaser Track and Field in addition to overseeing the TIC-IT-E-Z Ticketing System, all athletic revenue, concessions operations, event staffing, and various other duties. He is a native of Ronan, Montana and graduated in accounting from Missoula Business College in 1962. He gained experience in accounting and auditing before assuming his responsibilities at Montana. Gary and his wife, Judy, have six children: Christian Ann, Dustin, Lance, Christopher, Sara and Cary.

George Dennison became the 16th president of The University of Montana on August 15, 1990. Before coming to UM, Dennison was provost and vice president for academic affairs at Western Michigan University in Kalamazoo, a post he had held since 1987. He is a former resident of Kalispell and a UM alumnus. A history professor, he earned two degrees in that field at UM: a master's in 1963 and a bachelor's with highest honors in 1962. In 1967, he completed

Kathy has been the associate athletic director at Montana the past five years. In 1989 she served as interim athletic director, overseeing two I-AA football playoff games, as well as the Big Sky Conference women's basketball tournament, and an NCAA first-round game in women's basketball. She was instrumental in UM's bid for a Women's West Regional Basketball Tournament in March of 1993. Most recently Noble was the Assistant Director of the Department of Parks, Recreation and Public Facilities in Miami,

Gary is the veteran of Montana's athletic department, and is starting his 27th year at UM. He became athletic ticket manager in 1966, and was appointed Manager of Athletics Facilities and Revenue in 1978. He manages all scheduling in Adams Field House, Washington-Grizzly Stadium and Dornblaser Track and Field in addition to overseeing the TIC-IT-E-Z Ticketing System, all athletic revenue, concessions operations, event staffing, and various other duties. He is a native of Ronan, Montana and graduated in ac-

Bill Moos is beginning his third year as athletic director at The University of Montana. During his first two years at UM, Moos has overseen a program that has produced five Big Sky Championships and six teams that have qualified for NCAA postseason play. Moos has been instrumental in generating revenue for Grizzly athletics by incorporating the Grizzly Athletic Association into the department and by creating a new position that concentrates on corporate sponsorships. He has twice served as Director of the Big Sky Coors Light Men's Basketball Tournament and recently was named to the NCAA Division I-AA Football Advisory Committee for the West Region. Moos came to UM from his alma mater, Washington State, where he was an associate athletic director since 1982. He graduated from WSU in 1973 with a degree in History. As a Cougar athlete he was an all-Pac 10 and all-Pacific Coast selection in football. He capped his college career by playing in the 1972 East-West Shrine Game. Bill, and his wife, Kendra, have three children: Christa, 12, Brittany, 8, and Bo, 3.



**BILL MOOS**  
*Athletic Director*

Al is beginning his 15th year as Executive Director of the Grizzly Athletic Association, formerly known as the Century Club. In 1977 Century Club raised approximately \$70,000 for intercollegiate athletics. Last year the G.A.A. generated over \$550,000 in private support with emphasis primarily on athletic scholarships, but the G.A.A. assists in all phases of athletic department operations. He came to UM from California Lutheran University, where he had served as the Director of Alumni/Parent Relations from 1971 to 1977. He served in the U.S. Army from 1968-71 and in Vietnam from 1969-70, receiving many commendations. He is an alumnus of C.L.U., where he was a three-sport letterman and voted the Outstanding Senior Athlete in 1967. Al has three children: Kim, 22, Matthew, 20, and David, 18.



**AL KEMPFERT**  
*Executive Director  
Grizzly Athletic Association*

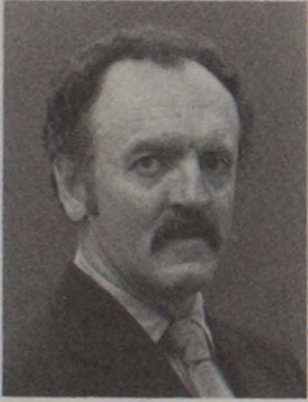
Bob is beginning his fifth year as UM's faculty representative to the National College Athletic Association. Dr. Lindsay has been a faculty member at UM since 1967. He is a professor of History and served as the department chairman from 1975-78. His specialty is Early Modern European History. Lindsay won the Distinguished Teacher Award at UM in 1985. He has taught overseas for UM in France in 1970-71 and 1981. He previously taught at Ohio University. He earned a Ph.D. and M.A. at the University of Oregon and an M.A. at the University of Minnesota. He received his B.A. at Nevada-Reno in 1953. As the NCAA Representative, he determines eligibility for UM athletes, makes NCAA rulings at the institutional level and is UM's representative to the NCAA. Bob and his wife, Joyce, have four children.



**ROBERT LINDSAY**  
*Faculty Representative*



## — ATHLETIC PERSONNEL —



**Steve Hackney**  
*Equipment Manager*

Steve is beginning his 12th season as the Grizzly equipment manager. He is a native of Hamilton, Montana. He graduated from The University of Montana in 1972 with a B.S. degree in Health and Physical Education, with an emphasis in Athletic Training and Physical Therapy. He received his master's degree in 1974 at Indiana State in HPE. He served three years in the Navy from 1962-65 and was a Spanish linguist. Steve and his wife, Larae, have a son Tyler, 9, and a daughter, Meghan, 6.

Dennis T. Murphy begins his 11th year as head athletic trainer at UM. Murphy graduated from Montana in 1975 with a B.S. degree in Health and Physical Education with a specialization in Athletic Training and Adaptive Physical Education. In June of 1975 he was certified by the National Athletic Trainers Association. In August of 1978 he was named assistant athletic trainer and lecturer at the Department of Athletics at the University of Arizona. In September of 1980 he accepted the position of Visiting Assistant Professor at UM. Murphy who has been a certified trainer for 16 years, has taught numerous training-related classes, has been a guest speaker at several sports clinics and written articles for training publications. He is single.



**Dennis Murphy**  
*Athletic Trainer*



**Bruce Wallwork**  
*Strength Coach*

Bruce has been the strength coach at Montana for the past five years, and oversees weight training and conditioning for all athletic programs. He designs and develops weight training programs in all of the throwing events. A Grizzly football letterman (1960-63), Bruce earned his B.A. degree at UM in 1967 in Health and Physical Education. He earned a master's degree at Montana in School Administration in 1975. He is the owner and operator of

Wallwork's Health and Strength Gym in Missoula. He is also a certified Montana Officials Association (MOA) official for basketball and volleyball, and officiates volleyball in the Big Sky Conference. He taught at local Loyola High School from 1973-1984, where he was head football coach for three years and head track coach for six seasons. Bruce and his wife, Susan, have two daughters, Kaipolani and Keala. Kaipolani was a letter winner at UM in track.

Dave is in his 15th season as UM's sports information director. His responsibilities include publications, press releases and promotions, game and cumulative statistics and research. He has won 17 district and national awards for his football and basketball media guides and programs. His 1989 UM football yearbook cover was selected the best in the nation. He served as media coordinator for the Montana Special Olympics in 1979 and 1980. He was the media director for the United States Association for Blind Athletes 7th Annual National Championships in 1983. He is a member of the College Sports Information Directors of America (Co-SIDA). He is a 1975 graduate of Fresno State and received a B.A. in Journalism. Dave and his wife, Mea Andrews, have a nine-year-old son, Patrick, and a six-year-old son, Matthew.



**Dave Guffey**  
*Sports Information Director*



**Bill Schwanke**  
*Director of Marketing and Media Relations*

Bill Schwanke was named Director of Marketing and Media Relations for athletics in December of 1991 after serving as interim director for six months. His responsibilities include securing corporate sponsors, television and radio marketing, directing the annual men's invitational basketball tournament, and overseeing department promotional activities. Schwanke also will serve his 20th year as radio voice of Grizzly football and men's basketball. Prior to assuming his new position in

July, 1990, Schwanke served three years as assistant director of the Grizzly Athletic Association. The 1967 graduate of The University of Montana is a former UM sports information director, sports editor of The Missoulian newspaper, and news/sports director for Missoula radio station KYLT. He is a six-time Montana Sportscaster of the Year. Bill and his wife, Lynn, have four children: Amber, 18 (a UM student), Myka, 15, Corbin, 14, and Genna, 11.

Chuck joined the Grizzly athletic department in June of 1988. As assistant to the athletic director, he oversees all business affairs of The University of Montana athletic department. He also makes all departmental supply orders, manages the budget and gives budget approval. He is a 1985 graduate of UM with a B.A. degree in Business Administration, graduating with degrees in Accounting and Management. He came to work at Montana immediately after graduation from his alma mater as an accountant. In that capacity he was responsible for financial transactions in Intercollegiate Athletics and the Plant Fund accounting per state and local policies. He graduated from Anaconda High School in 1978 and was a track letterman as a prep. His wife's name is Brenda.



**Chuck Maes**  
*Assistant to the Athletic Director, Business Affairs*



— ATHLETIC PERSONNEL —



**Linda McCarthy**  
*Assistant Sports  
Information Director*



**Cathy Grothe**  
*Assistant Promotions  
Director*



**Chris Fry**  
*Assistant  
Athletic Trainer*



**Loren Flynn**  
*Assistant Manager,  
Athletic Services*



**Cindy Hodgman**  
*Sports Information  
Secretary*



**Jane Felstet**  
*Administrative  
Secretary*



**Marie Hibbard**  
*Academic Advisor*



**Debbie Eviason**  
*Volleyball Manager*



**Patty Dwight**  
*Administrative Asst.  
Business Office*



**Rob Stack**  
*Assistant Equipment  
Manager*



**Rae Proctor**  
*Administrative  
Assistant*



**Ray Ekness**  
*Director/Producer  
Sportsweek*



## HEAD COACH DICK SCOTT

294-208, 14 Years

Dick Scott will start his 15th year as head coach of The University of Montana Lady Griz volleyball team. After 14 years at UM, he has posted a 294-208 record and eleven 20-win seasons. Scott's 19-year overall record is 405-228.

Last year Scott led the Lady Griz to a best-ever 26-4 record and a second consecutive appearance in the NCAA Championships. He was named the Big Sky Conference Coach of the Year, and he was also tabbed co-Coach of the Year in the Northwest Region by the American Volleyball Coaches' Association.



The Lady Griz are the only Big Sky team to advance to the conference playoffs each of the past 10 seasons. Last year Montana became the only Big Sky team to go undefeated in the league at 16-0. Montana won the regular season title and the tournament title after beating Idaho State and Boise State in Missoula.

Before coming to Montana in 1978, Scott coached in California. From 1971 to 1978, he coached at Santa Monica Junior College. With 52 wins and only one loss in league play, his overall record there was 110-20. While coaching at Santa Monica J.C., Scott was also a graduate assistant for the UCLA Bruins from 1970 to 1978. He earned his master's degree in Health and Physical Education there. In addition, Scott taught physical education and general science at John Adams Junior High from 1970 to 1978.

While in Los Angeles, Scott led the Maccabi Volleyball Club to two national open championships. In 1976, his team won the USVBA national championships and took second in the AAU nationals, and in 1977 his team won the AAU national championships and took second in the USVBA nationals.

Scott has had a vast amount of international experience.

Between 1977 and 1979 Scott was the head coach for the U.S.A. Junior National team. In 1977, his team placed third at the Pacific Rim International tournament, and in 1978 and 1979, Scott's teams won the Pacific Rim championships. It was the first time the United States had won a gold medal in volleyball since the Pan-American Games in 1967.

In 1976, Scott was an assistant coach for the U.S.A. Junior National Team for the NORCECA Tournament. His team qualified for the World Junior Championships the following year.

Scott served as an assistant coach for the United States Olympic men's volleyball team when it participated in the U.S.A. Championship Series in 1985.

He also served as an assistant coach for the Men's National Team in the 1981 World University Games in Rumania and the U.S.A. Cup in 1985. In the fall of 1976, Scott was the assistant coach of the U.S.A. National Team which defeated the Suntory Club from Japan, the first time an American team defeated a team from Japan.

A native of Denton, Mont., the 49-year-old graduated with a bachelor's degree in Physical Education in 1965 from Montana State University, where he lettered in basketball and track. Scott served in the Air Force from 1965 to 1969.

Two years ago Scott became a published author, after writing a chapter in "Volleyball's Cadre Collection--Volume II," an accumulation of coaching techniques written by some of the most prestigious coaches in volleyball.

Three years ago, Scott was named the Outstanding Official for the state of Montana for his officiating of high school volleyball matches.

Dick has three children. Jean (21) plays volleyball for the Northwest Community College Trappers in Powell, Wyo. Patty (17) plays volleyball for Hellgate High School in Missoula, and Jack is 10.



## **Assistant Coach DONNA FINNEY**

Donna Finney starts her second year as assistant coach under Dick Scott. Her duties include assisting in all volleyball activities, encompassing recruiting, player counseling, fitness and health guidelines, budgeting and scheduling. She also assists in the development and direction of summer volleyball clinics and camps.

Before coming to UM, Finney was a graduate assistant coach at Southern Illinois University in Carbondale for two years. In 1990 the Salukis went 12-16. At SIUC, Finney was also the Saluki camp director and co-director of the Carbondale Junior Sports Program.

Finney was a starter and four-year letter winner at Washington State from 1984 to 1989. She earned a B.A. degree in Child and Family Studies at WSU in 1989, and last spring she received her M.A. degree in Preschool Administration from Southern Illinois.

A native of Santa Monica, Calif., Finney attended Calabasas High School in Agoura, Calif., where she lettered in volleyball and basketball. As a junior, Finney's USVBA team placed eighth at nationals.

She is single.



## **Graduate Assistant ANN SCHWENKE**

Montana's all-time leading setter with 4,650 career sets, Ann Schwenke returns to the court this season as Scott's graduate assistant. She will assist in all aspects of the game, including recruiting, scouting, conditioning and game strategy.

Schwenke was a two-time Lady Griz MVP, and last season she was named the Big Sky's regular season and tournament MVP after leading UM to a best-ever 26-4 record and a second straight appearance in the NCAA tournament.

A two-time All-Northwest Regional selection, Schwenke earned UM's Outstanding Setter award three consecutive years. She started 422 matches in her collegiate career, and during both her junior and senior seasons, she was ranked in the top 20 nationally in assists.

Schwenke was also a three-time Big Sky all-academic selection and a member of the UM Student Athletic Advisory Committee. She graduated last June with a bachelor's degree in Accounting and plans to pursue a master's degree in the same field.

She is single.



## 1991 LADY GRIZ RESULTS

Date	Opponent	Result	Score	Attn.	Record
8-30	Baylor &	W	3-0	400	1-0
8-30	Colorado &	L	0-3	400	1-1
8-31	Oregon &	L	0-3	250	1-2
8-31	Portland &	W	3-2	250	2-2
9-6	Wyoming %	W	3-2	50	3-2
9-6	Arizona %	W	3-1	380	4-2
9-7	Cal State-Bakersfield %	L	2-3	50	4-3
9-11	@ Gonzaga	W	3-1	757	5-3
9-12	Montana Tech	W	3-1	290	6-3
9-19	@ Idaho State*	W	3-1	900	7-3
9-21	@ Boise State*	W	3-2	300	8-3
9-27	Nevada*	W	3-0	542	9-3
9-28	Northern Arizona*	W	3-2	708	10-3
10-4	@ Utah	W	3-1	356	11-3
10-5	@ Weber State*	W	3-0	250	12-3
10-11	@ Eastern Washington*	W	3-1	508	13-3
10-12	@ Idaho*	W	3-0	313	14-3
10-14	Gonzaga	W	3-2	533	15-3
10-18	@ Montana State*	W	3-1	823	16-3
10-25	Boise State*	W	3-1	774	17-3
10-26	Weber State*	W	3-0	612	18-3
10-31	@ Northern Arizona*	W	3-0	922	19-3
11-2	@ Nevada*	W	3-0	343	20-3
11-8	Idaho*	W	3-0	2084	21-3
11-9	Eastern Washington*	W	3-0	1149	22-3
11-12	Montana State*	W	3-0	1349	23-3
11-15	Idaho State*	W	3-0	1211	24-3
11-23	Idaho State#	W	3-0	1265	25-3
11-24	Boise State#	W	3-1	1525	26-3
12-6	@ Pacific\$	L	0-3	994	26-4

&--Portland Invitational; %--Arizona Invitational; \*--Big Sky Conference Game; #--Big Sky Championships; \$--NCAA Championships.

Montana averaged 676 fans per game and 1,004 fans per home game in 1991.

## YEAR-BY-YEAR RECORDS

Since 1980

YEAR	OVERALL	LEAGUE	COACH
1991	26-4	16-0, 1st	Dick Scott
1990	24-7	13-3, 2nd	Dick Scott
1989	21-10	12-4, 3rd	Dick Scott
1988	16-10	12-4, 3rd	Dick Scott
1987	23-10	11-5, 2nd	Dick Scott
1986	21-11	8-4, 2nd	Dick Scott
1985	22-15	8-6, 2nd	Dick Scott
1984	14-22	7-7, 4th	Dick Scott
1983	25-10	10-4, 2nd	Dick Scott
1982	21-18	10-4, 2nd	Dick Scott
1981	24-17	6-4	Dick Scott
1980	22-22	3-9	Dick Scott
1979	21-25-2		Dick Scott
1978	14-27		Dick Scott



# THE UNIVERSITY OF MONTANA

## Lady Griz Volleyball

### 1992 Schedule

DATE	OPPONENT	TIME (MST)
<b>Fri., Sept. 4-</b>	<b>Montana Invitational</b>	
<b>Sat., Sept. 5</b>	Friday, the 5th	
	Oregon State vs. Gonzaga	10:00 a.m.
	Gonzaga vs. SW Missouri State	3:00 p.m.
	Montana State vs. Oregon State	5:00 p.m.
	<b>Montana vs. SW Missouri State</b>	<b>7:30 p.m.</b>
	Saturday, the 6th	
	Montana State vs. Gonzaga	11:00 a.m.
	SW Missouri State vs. Oregon State	1:00 p.m.
	<b>Montana vs. Gonzaga</b>	<b>3:00 p.m.</b>
	SW Missouri State vs. Montana State	5:00 p.m.
	<b>Montana vs. Oregon State</b>	<b>7:30 p.m.</b>
<b>Tues., Sept. 8</b>	<b>Cal Poly-San Luis Obispo</b>	<b>7:30 p.m.</b>
<b>Fri., Sept. 11-</b>	@ JMN Tournament, hosted by UCSB	TBA
<b>Sat., Sept. 12</b>	Santa Barbara, Montana, Michigan, San Diego, Colorado State, Santa Clara, Nevada, San Jose State, CSU-Northridge, Morehead State, Loyola Marymount, Georgia Tech	
<b>Fri., Sept. 18-</b>	@ Mortar Board Purdue Premier	
<b>Sat., Sept. 19</b>	Friday, the 18th	
	Montana vs. Purdue	10:30 a.m.
	Montana vs. Florida	8:00 p.m.
	Saturday, the 19th	
	Montana vs. Notre Dame	4:30 p.m.
<b>Fri., Sept. 25</b>	@ Idaho*	8:30 p.m.
<b>Sat., Sept. 26</b>	@ Eastern Washington*	8:00 p.m.
<b>Thurs., Oct. 1</b>	<b>Weber State*</b>	<b>7:30 p.m.</b>
<b>Sat., Oct. 3</b>	<b>Northern Arizona*</b>	<b>7:30 p.m.</b>
<b>Fri., Oct. 9</b>	@ Idaho State*	7:30 p.m.
<b>Sat., Oct. 10</b>	@ Boise State*	7:00 p.m.
<b>Fri., Oct. 16</b>	<b>Montana State*</b>	<b>7:30 p.m.</b>
<b>Sat., Oct. 24</b>	Portland (in Spokane, Wash.)	1:00 p.m.
	@ Gonzaga	8:00 p.m.
<b>Fri., Oct. 30</b>	<b>Eastern Washington*</b>	<b>7:30 p.m.</b>
<b>Sat., Oct. 31</b>	<b>Idaho*</b>	<b>7:30 p.m.</b>
<b>Thurs., Nov. 5</b>	@ Northern Arizona*	7:00 p.m.
<b>Sat., Nov. 7</b>	@ Weber State*	7:00 p.m.
<b>Fri., Nov. 13</b>	<b>Boise State*</b>	<b>7:30 p.m.</b>
<b>Sat., Nov. 14</b>	<b>Idaho State*</b>	<b>7:30 p.m.</b>
<b>Wed., Nov. 18</b>	@ Montana State*	7:30 p.m.
<b>Nov. 27-28</b>	Big Sky Championships (held at site of regular season champion)	TBA
<b>Dec. 3-5</b>	NCAA First Rounds (sites TBA)	TBA
<b>Dec. 17-19</b>	NCAA Finals (University of New Mexico)	TBA

\*---Big Sky Conference match    **Home matches in Bold**



## 1992 LADY GRIZ OUTLOOK

For the first time in the history of the program, the Montana Lady Griz will enter the 1992 season as the defending Big Sky Conference champions!

A perfect 16-0 league mark, a 22-match winning streak, a 26-4 season record, and a second consecutive appearance in the NCAA tournament are milestones the returnees have to motivate them for the 1992 season. But the loss of four senior all-conference starters, three of which were all-Northwest selections, leaves head coach Dick Scott feeling somewhat anxious.

Montana lost the services of Angie Bellinger, Colleen Jantz, Big Sky MVP Ann Schwenke and Kathy Young, but six returnees, three redshirts and five newcomers are the elements Scott

needs to mold together to maintain Montana's winning tradition. And he will do so without reservations.

"There's always a little apprehension when you begin a season with such a young team," said the 1991 Big Sky and Northwest Coach of the Year. "But we've had a lot of success, and being young is fun. It's a challenge every year, and it's fun to see how far you can go."

As always, Scott hopes to go all the way. Last year Montana finally won the Big Sky title in its 10th appearance in the postseason tournament, and Scott would most certainly like to repeat.

"Our goals are always high," he said. "We have the attitude that we proved who we are last year. This year is a brand new year, but we'll be the team people will shoot for."

Experience will be the key for the Lady Griz in 1992. Montana has only two returning starters on a squad that features 12 underclassmen, two juniors and no seniors. But seven members have redshirt years under their belts, and seven have postseason experience.

"We may be young, but we have had kids in the program longer than what it looks on paper," Scott said. "Almost every one of our players has an extra year, so there are more repetitions than what is indicated."

The fate of the Lady Griz will be determined by how well Scott's underclassmen will integrate into the program. One certain thing, however, is that Scott is happy to return two starters and one starter who redshirted last season.

Juniors Trish Lake and Jennifer Moran will be UM's starting hitters and on-court leaders. Lake is one of the returning starters from last season, who played every game at right side. Moran, who was a 1990 all-Northwest selection, is coming off a redshirt year and will be ready to resume her starting role at left side.

Montana's other returning starter is sophomore middle blocker Heidi Williams, who will also be looked to for leadership. Williams was Montana's Most Improved player last season.

Also highlighting Montana's returnees is sophomore setter Linde Eidenberg. Eidenberg had one year to work with Ann Schwenke, Montana's all-time leading setter, and now she is ready to assume the role of starting setter. One plus for Eidenberg is that Schwenke will be Montana's graduate assistant coach this year.

Montana's other returnees include sophomores Sarah Hurlburt, Karen Goff and Michelle Peterson, and Sheri Vinion and Andrea McHugh return as redshirt freshman.

Montana's newcomers include setter Jennifer Patera from Havre, Mont., middle blockers Inga Swanson from Choteau, Mont., and Kira Kneitel from El Toro, Calif., and two walk-ons. Gypsy Hoover is a sophomore outside hitter from Missoula, who transferred from Metro State College in Denver, and Yuki Morita is a sophomore setter and back row specialist from Kobe, Japan.

"We have a great class of freshman this season," Scott said, "and we're very lucky to have a couple of walk-ons to help fill out the roster. All our newcomers can be called upon to help us out."

Scott may have to call on those rookies early on, as a grueling 1992 preseason schedule will test the team from the outset.

The Lady Griz open the season September 4-5 with the Montana Invitational, the first preseason tournament Montana has hosted since the Glacier Invitational in 1983. The tournament field features Southwest Missouri State, Gonzaga, Oregon State and Montana State.

After a home match-up against a typically strong team in Cal Poly-San Luis Obispo, the Lady Griz will compete in one of the toughest preseason tournaments year in and year out—the JMN tournament hosted by UC-Santa Barbara. Teams competing include Santa Barbara, Michigan, San Diego, Colorado State, Santa Clara, Nevada, San Jose State, Cal State-Northridge, Morehead State, Loyola Marymount and Georgia Tech.

"The field is almost frightening," Scott said, "but it will be a real test for us early on. It's a situation where we want to be tested on the road."

Following the JMN tournament, Montana will travel to Indiana to compete in the Purdue Tournament, along with Notre Dame and Florida, a 1991 NCAA tournament participant.

Montana will embark on the 1992 Big Sky schedule in late September. With the loss of Nevada to the Big West Conference, the league schedule will consist of only 14 games this year.

In late October, the Lady Griz will take a break from the Big Sky and meet up with Portland and Gonzaga, both in Spokane.

"I'm really pleased with our schedule, and I think we've got some great tournaments in the preseason," Scott said. "But as always, the Big Sky schedule is the most important, and this year is going to be very tough."

"Northern Arizona came on like gang busters last year, but they still need to be tested. Idaho is frightening; they're like a bomb ready to explode. They could have a season like we had last year because they have the talent. Idaho State is always there, and I think Jon (Potter) had a good recruiting year. Eastern Washington is scary, especially if they get that Brazilian girl eligible, and Weber State also had a good recruiting year. Boise State always comes on strong at the end of the season, and Montana State is a question mark."

"It's really going to be a race," he said. "I'd hate to call the winner this year, but if I had to, I think Boise State probably has the edge."





# LADY GRIZ RECORD BOOK

## TEAM

### Single Match

Kills	110 vs. Weber State, 11-14-89
Kill Attempts	326 vs. New Mexico State, 9-28-86
Hitting Percentage	.500 vs. Washington State, 10-19-80
Service Aces	18 vs. Gonzaga, 1979
Assists	99 vs. Weber State, 10-14-89
Digs	143 vs. Portland, 8-31-91
Solo Blocks	16 vs. Eastern Washington, 11-7-86
Block Assists	31 vs. Eastern Washington, 11-8-85
Total Blocks	38 vs. Idaho, 10-25-85
Passing Percentage	.930 vs. Washington State, 10-31-81

### Season

Kills	1,823, 1987
Kill Average	15.57, 1991
Kill Attempts	5,030, 1985
Hitting Percentage	.240, 1986 & 1991
Service Aces	399, 1979
Service Ace Average	2.01, 1988
Assists	1,616, 1985
Assist Average	13.33, 1991
Digs	2,307, 1991
Dig Average	20.78, 1991
Solo Blocks	220, 1983
Block Assists	476, 1985
Total Blocks	720, 1985
Block Average	3.08, 1991
Passing Percentage	.691, 1991



Allison Yarnell of Spokane, Wash. played for Montana from 1984 - 87.

## INDIVIDUAL

### Single Match

Kills	40, Jennifer Moran vs. Weber State, 10-14-89
Kill Attempts	84, Cindy Pitzinger & Allison Yarnell vs. New Mexico State, 9-28-86
Hitting Percentage	.875 (7-0-8) Ann Schwenke vs. Weber State, 10-26-91
Service Aces	8, Several Players, Most recent, Debbie Carter vs. Gonzaga, 9-12-86
Assists	98, Ann Schwenke vs. Weber State, 10-14-89
Digs	43, Kathy Young vs. Gonzaga, 10-14-91
Solo Blocks	11, Cindy Pitzinger vs. New Mexico State, 9-28-86
Block Assists	11, Colleen Jantz vs. Northern Arizona, 9-28-91
Total Blocks	15, Trish Lake vs. San Francisco, 11-10-89
Passing Percentage	.938, Wendy Ninteman vs. Washington, 1979

### Season

Kills	489, Allison Yarnell, 1987
Kill Average	4.35, Angie Bellinger, 1991
Kill Attempts	1,272, Allison Yarnell, 1987
Best Hitting Percentage	.300, Mary Klueber, 1981, Jennifer Pinkerton, 1989 & 1990
Service Aces	84, Jean Cavanaugh, 1979
Service Ace Average	.48, Man Brown, 1988
Assists	1,359, Wendy Hoyt, 1982
Assist Average	12.13, Ann Schwenke, 1991
Digs	554, Kathy Young, 1991
Dig Average	5.04, Kathy Young, 1991
Solo Blocks	73, Cindy Pitzinger, 1985
Block Assists	112, Nan Kuenzel, 1985
Total Blocks	206, Cindy Pitzinger, 1985
Block Average	1.54, Cindy Pitzinger, 1986
Best Passing Percentage	.730, Jean Cavanaugh, 1981



# —RECORD BOOK CONT'D —

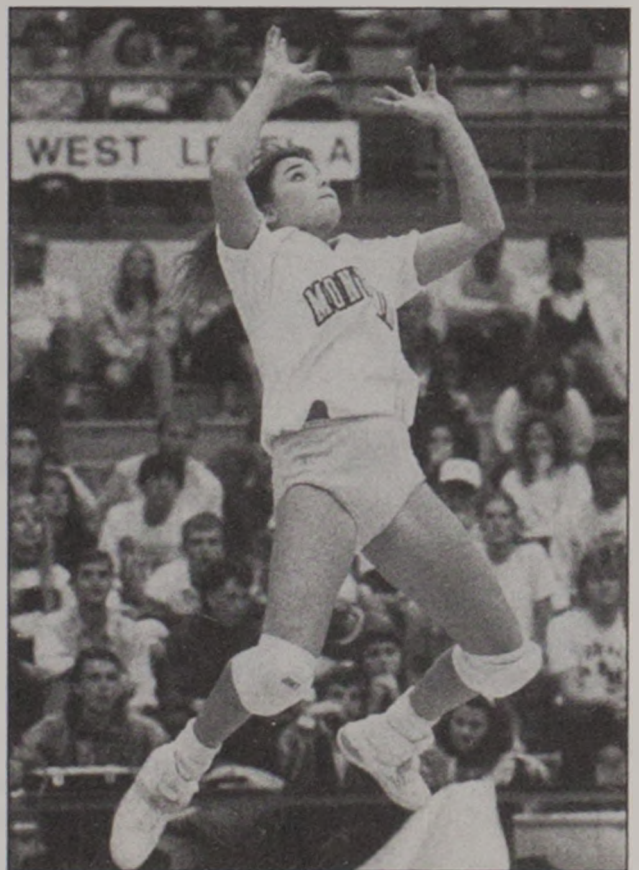
## CAREER LEADERS

### Kills

	Name	Years	Kills
1.	Allison Yarnell	1984-87	1552
2.	Cindy Pitzinger	1984-87	1343
3.	Angie Bellinger	1988-91	1296
4.	Mary Beth Dungan	1981-84	1254
5.	Mary Klueber	1980-83	1108
6.	Pat Benson	1979-82	1033
7.	Kara Price	1981-83	969
8.	Jennifer Pinkerton	1987-90	904
9.	Wendy Ninteman	1979-80	887
10.	Brenda Gilbertson	1980-83	828

### Blocks

	Name	Years	Blocks
1.	Cindy Pitzinger	1984-87	578
2.	Mary Klueber	1980-83	412
3.	Jennifer Pinkerton	1987-90	397
4.	Pat Benson	1979-82	383
5.	Laura Slanec	1982-85	372
6.	Nan Kuenzel	1982-85	354
7.	Colleen Jantz	1988-91	295
8.	Anne Tarleton	1987-90	281
9.	Kara Price	1981-83	248
10.	Brenda Gilbertson	1980-83	218



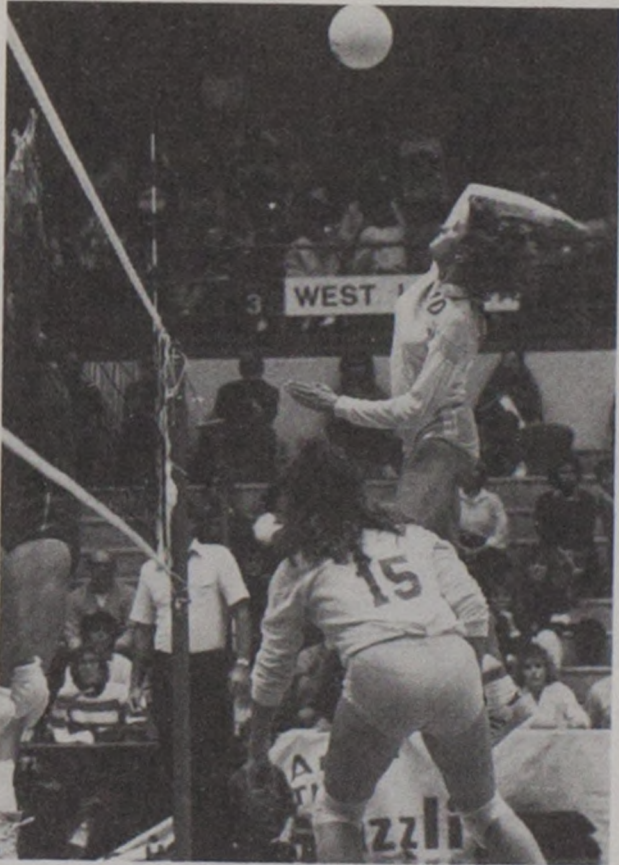
Montana's all-time leading setter Ann Schwenke, from Coeur d'Alene, Idaho, played from 1988-91. This year, she is a graduate assistant coach.

### Hitting Percentage

	Name	Years	Kills	Errors	Attempts	Pct.
1.	Cindy Pitzinger	1984-87	1343	529	3092	.263
2.	Allison Yarnell	1984-87	1552	544	3997	.253
3.	Mary Klueber	1980-83	1108	441	2722	.245
4.	Jennifer Pinkerton	1987-90	904	358	2237	.244
5.	Angie Bellinger	1988-91	1296	503	3359	.236
6.	Anne Tarleton	1987-90	607	239	1578	.233
7.	Pat Benson	1979-82	1033	454	2578	.225
8.	Mary Beth Dungan	1981-84	1254	497	3380	.224
9.	<b>Jennifer Moran</b>	<b>1989 —</b>	<b>737</b>	<b>330</b>	<b>1908</b>	<b>.213</b>
10.	Kara Price	1981-83	969	424	2565	.212

Note: Minimum of 1,500 attempts.





**Cindy Pitzinger, a native pf Puyallup, Washington, played for Montana from 1984 - 87.**

### Service Aces

	Name	Years	Aces
1.	Jean Cavanaugh	1978-81	252
2.	Pat Benson	1979-82	168
3.	Mary Klueber	1980-83	156
4.	Mari Brown	1986-89	151
5.	Mary Beth Dungan	1981-84	141
6.	Ann Schwenke	1988-91	134
7.	Wendy Ninteman	1978-80	133
8.	Kara Price	1981-83	126
9.	Cheryl Hanson	1984-87	113
10.	Cindy Pitzinger	1984-87	111

### Assists

	Name	Years	Assists
1.	Ann Schwenke	1988-91	4650
2.	Mary Pederson	1983-84	2348
3.	Wendy Hoyt	1980-82	2336
4.	Michele Hall	1985-86	1697
5.	Mari Brown	1986-89	1355
6.	Diana Bandel	1980-81	1052
7.	Jan Dempsey	1984-86	1006
8.	Erin Parks	1987-90	395
9.	Karen McClendon	1982-83	261
10.	Moiria Fagan	1980-81	164

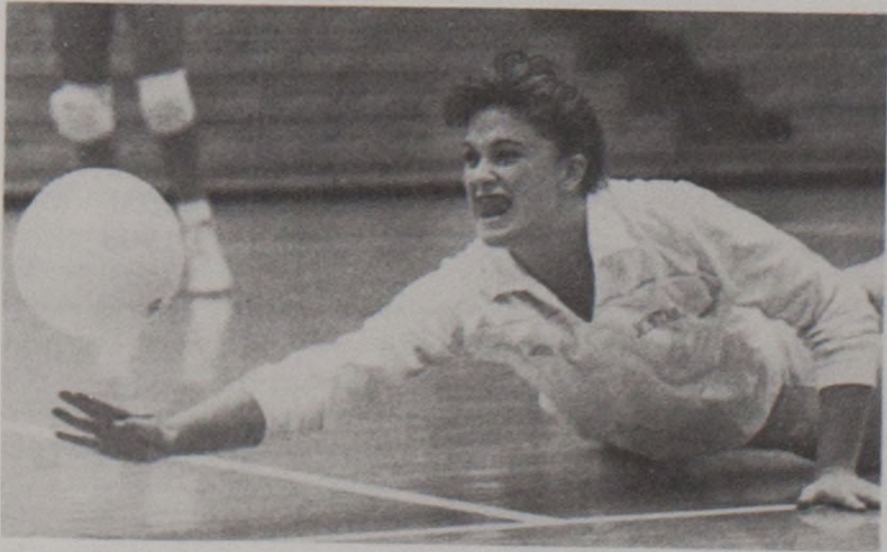
Note: Assists not kept prior to 1980 season.

### Digs

	Name	Years	Digs
1.	Angie Bellinger	1988-91	1280
2.	Mari Brown	1986-89	1249
3.	Allison Yarnell	1984-87	1177
4.	Kathy Young	1988-91	1040
5.	Cindy Pitzinger	1984-87	1024
6.	Ann Schwenke	1988-91	910
7.	Cheryl Hanson	1984-87	857
8.	Cyndee Jones	1987-90	602
9.	Jennifer Pinkerton	1987-90	594
10.	<b>Jennifer Moran</b>	<b>1989-</b>	<b>578</b>

Note: Digs not kept prior to 1984 season.

No stats available before 1978. Current players in Bold.



**Angie Bellinger, a native of Spokane, Wash., played for Montana from 1988-91.**



# LADY GRIZ VOLLEYBALL SERIES RECORDS

Since 1980 Only

SCHOOL	WON	LOST	SERIES BEGAN	SCHOOL	WON	LOST	SERIES BEGAN
Air Force	2	0	1983	Northern Arizona	11	0	1980
Alabama-				Northern Montana	1	0	1986
Birmingham	1	0	1986	Northwest Community			
Alaska	1	0	1980	College	1	0	1980
Alberta	1	0	1981	Northwestern	0	1	1982
Arizona	1	0	1991	Notre Dame	1	1	1989
Baylor	1	0	1991	Ohio State	1	0	1985
Boise State	13	12	1981	Oregon	2	6	1980
Brigham Young	0	7	1980	Oregon College			
British Columbia	0	1	1980	of Education	1	0	1980
Cal-Berkeley	2	3	1981	Oregon State	2	2	1980
Cal-Irvine	1	1	1982	Pacific	0	2	1990
Cal-Riverside	1	0	1987	Penn State	0	1	1983
Cal State-				Portland	2	1	1987
Bakersfield	0	1	1991	Portland State	2	17	1980
Cal State-				San Diego State	0	1	1984
Long Beach	1	2	1981	San Francisco	1	0	1989
Calgary	3	2	1980	San Jose State	0	1	1982
Carroll College	5	0	1980	Santa Clara	1	1	1984
Chapman	1	0	1986	Simon Fraser	2	0	1980
Colorado	0	1	1990	Southern California	0	1	1988
Colorado State	1	2	1982	Southern Illinois	0	1	1981
Eastern Montana	4	0	1985	Southwest			
Eastern				Missouri State	1	0	1984
Washington	24	3	1980	Southwest			
Gonzaga	13	2	1981	Texas State	1	0	1989
Houston	3	0	1982	St. Mary's College	1	0	1989
Idaho	15	5	1983	Texas	0	1	1989
Idaho State	12	11	1983	Texas A&M	0	1	1986
Illinois	2	0	1982	Texas Tech	1	1	1980
Illinois State	0	1	1985	Texas-Arlington	0	2	1981
Lamar	1	0	1989	Texas-El Paso	1	0	1983
Lewis & Clark	2	0	1981	Texas-San Antonio	1	0	1989
Long Beach State	0	1	1988	U.S. International	1	1	1985
Louisiana State	1	1	1985	Utah	7	7	1980
Memphis State	1	0	1987	Utah State	7	5	1982
Minnesota	1	0	1986	Utah Tech	1	0	1982
Mississippi	1	0	1990	Victoria	0	1	1980
Missouri	1	0	1985	Washington	0	7	1980
Montana State	23	16	1980	Washington State	11	3	1980
Montana Tech	7	0	1984	Weber State	20	9	1980
Nebraska	0	2	1982	Western			
Nevada-Reno	10	2	1980	Washington	1	0	1980
New Mexico	0	2	1983	Whitworth	1	0	1981
New Mexico State	0	3	1983	Wyoming	3	2	1980



# Understanding Volleyball



**Spike:** An aggressive attack by the hitter, swinging the arm directly over the shoulder and contracting the heel of the hand and aggressively snapping the wrist over the top of the ball. The tipping motion, soft contact of the ball, is also considered a spike.



**Pass:** This is normally the first contact after the ball passes the net on an opponent's serve. The object is to get the ball to the setter in order to set one of the hitters. The ideal position is to have a stable platform with the forearms together. The ball should recoil off the platform, hitting both arms simultaneously. A dig is similar in form to a pass, but is usually the return of a spiked ball.



**Block:** The first line of defense in volleyball. Blocking is an attempt to intercept a spiked ball on the opponent's side of the net. The blocker is allowed to reach as far over the net as possible without touching the net. The block must occur after the spiker has contacted the ball.

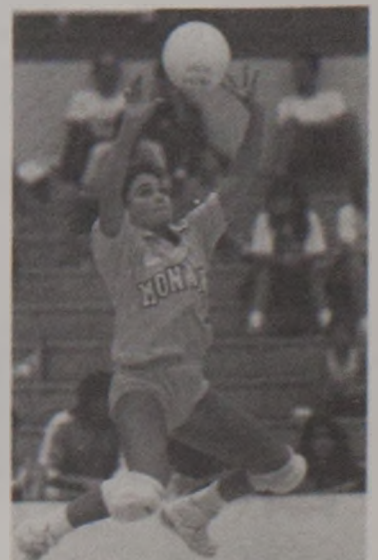


**Roll:** One of the recovery skills. This is basically a gymnastics maneuver to save the body after the ball has been contacted. The players extend onto their arm and roll over the opposite shoulder coming back to their feet. The roll is used in emergency situations when the player can't get the ball up from the normal platform stance.

**Serve:** The method with which the ball is put into play. The team can only score after it has served the ball so this is a crucial offensive weapon. The most common serve in power volleyball is the knuckleball. The ball moves in an unpredictable path, making it hard to receive and pass to the setter. The ideal motion is to toss the ball high in front of the contacting shoulder and contact the ball with the heel of the hand and recoil off the ball. It is important not to snap the wrist on the serve.



**Set:** An overhead pass which is put above the net for the spiker to attack. The ball is set simultaneously from the finger pads of both hands. The ball can never rest on the palms and the follow-through is directly towards the area where the ball was set.





# MONTANA LADY GRIZ VOLLEYBALL

## 1992 Roster



Front Row L-R: Michelle Peterson, Jennifer Patera, Linde Eidenberg, Yuki Morita.  
 2nd Row L-R: Inga Swanson, Kira Kneitel, Andrea McHugh, Karen Goff, Heidi Williams, Sheri Vinion, Gypsy Hoover, Sarah Hurlburt.  
 3rd Row L-R: Head Coach Dick Scott, Graduate Assistant Coach Ann Schwenke, Tricia Lake, Jennifer Moran, Assistant Coach Donna Finney.

<u>NO</u>	<u>PLAYER</u>	<u>POS</u>	<u>HT</u>	<u>YR</u>	<u>EXP</u>	<u>HOMETOWN/SCHOOL</u>
1	Michelle Peterson	BR	5-5	SO	1V	Missoula, Mont./Big Sky HS
2	Sarah Hurlburt	OH	5-8	SO	1V	Billings, Mont./Billings West HS
3	Yuki Morita	S/BR	5-0	SO	HS	Kobe, Japan/Maiko Senior HS
4	Linde Eidenberg	S	5-8	SO	1V	Boring, Ore./Sam Barlow HS
5	Heidi Williams	MB	5-11	SO	1V	Missoula, Mont./Big Sky HS
6	Sheri Vinion	OH	6-0	FR	RS	Missoula, Mont./Big Sky HS
7	Gypsy Hoover	OH	5-9	SO	TR	Missoula, Mont./Metro State/Big Sky HS
9	Jennifer Moran	OH	6-0	JR	2V/RS	Spokane, Wash./Shadle Park HS
10	Karen Goff	MB	5-11	SO	1V	Puyallup, Wash./Puyallup HS
11	Andrea McHugh	OH/MB	6-0	FR	RS	Butte, Mont./Butte HS
12	Jennifer Patera	S	5-6	FR	HS	Havre, Mont./Havre HS
14	Trish Lake	OH	6-1	JR	2V/RS	Oak Harbor, Wash./Oak Harbor HS
15	Inga Swanson	MB	6-0	FR	HS	Choteau, Mont./Choteau HS
16	Kira Kneitel	MB	5-11	FR	HS	El Toro, Calif./El Toro HS

HEAD COACH: Dick Scott (15th Year)/(Montana State, 1965)

ASSISTANT COACH: Donna Finney (Second Year)/(Washington State, 1989)

GRADUATE ASSISTANT COACH: Ann Schwenke (First Year)/(Montana, 1992)

ASSOCIATE ATHLETIC DIRECTOR: Kathy Noble

HEAD ATHLETIC TRAINER: Chris Fry

ASSISTANT ATHLETIC TRAINER: Kellie Wasik

SPORTS INFORMATION DIRECTOR: Linda McCarthy

MANAGER: Debbie Eviason



— LADY GRIZ PROFILES —



**LINDE EIDENBERG**  
**5-8 Sophomore**  
**Setter**  
**Boring, Oregon**

4

A rare left-handed setter, Linde Eidenberg (I-Den-Berg) was Montana's Outstanding Rookie last season as a true freshman. She played in 63 games last year, and with the loss of all-time setter Ann Schwenke, Linde will most likely be UM's starting setter this season. Playing primarily back row last season, Eidenberg averaged 1.51 digs and 1.03 sets per game.

At Sam Barlow High School in Boring, Oregon, Eidenberg led her team to a 25-8 record and a fourth-place finish at the state championships. Her team was one of the top twenty high school teams in the nation in 1990. Linde earned all-conference, all-state and all-tournament honors in the Mount Hood Conference.

Eidenberg also played for the Portland USVBA Volleyball Club, earning all-regional honors three years in-a-row.

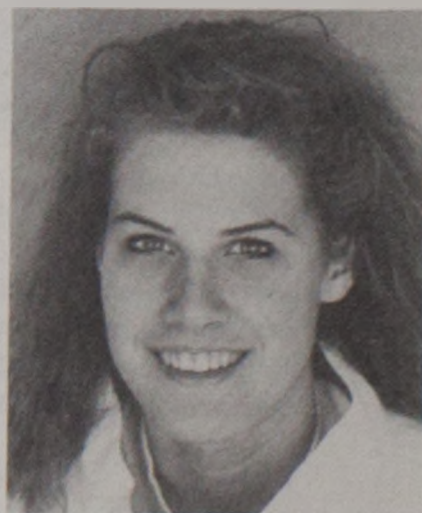
"Linde is the first left-handed setter that we've ever had," Scott said. "She is one of our better athletes, and she has really been coming on strong. Linde has so much volleyball experience, and she is a very intense competitor and natural leader. We're very excited about that."

Born on March 20, 1973 to Pete and Linde Eidenberg of Boring, Linde is studying business administration.

SEASON	GP	KILLS	ERR	TA	PCT.	KPG	ASS	SA	SE	RE	DIGS	DPG	BS	BA	BPG
1991	63	14	9	54	.093	0.17	65	12	18	5	95	1.51	0	7	0.11
TOTALS	63	14	9	54	.093	0.17	65	12	18	5	95	1.51	0	7	0.11

**KAREN GOFF**  
**5-11 Sophomore**  
**Middle Blocker**  
**Puyallup, Washington**

10



One of only two players who played as a true freshman, Karen Goff averaged 1.43 kills, 2.00 digs and .85 blocks per game last season in 47 games. With the loss of all-conference player Colleen Jantz, Goff will vie with Heidi Williams for starting time.

Goff averaged nine kills and four blocks as a senior at Puyallup High School. The Vikings went 12-2 and finished fifth in the Washington state tournament. Goff was named team MVP, Bethal Tournament MVP and MVP of the South Puget Sound League (SPSL). She was also an all-league and all-state selection and her team's Most Inspirational player.

Goff also played for the Tacoma-Pierce Volleyball Club, one of the top USVBA club teams in the state of Washington. She is from the same hometown as UM volleyball great Cindy Pitzinger.

Goff was a three-sport standout as a prep player, lettering in basketball and softball. She was the hoop club's MVP her senior year and a two-time all-SPSL selection. She also competed in soccer and track.

"Karen has really improved in blocking and maintaining her intensity level," Scott said. "She had an excellent spring season, and she has taken some really positive steps. Karen is just a tremendous athlete."

The daughter of Terry and Leigh Goff of Puyallup, Karen was born on November 17, 1972. She is a sociology major, minoring in criminology.

SEASON	GP	KILLS	ERR	TA	PCT.	KPG	ASS	SA	SE	RE	DIGS	DPG	BS	BA	BPG
1991	47	67	30	193	.192	1.43	4	16	17	7	94	2.00	10	30	0.85
TOTALS	47	67	30	193	.192	1.43	4	16	17	7	94	2.00	10	30	0.85





**GYPSY HOOVER**  
**5-9 Sophomore**  
**Outside Hitter**  
**Missoula, Montana**

7

A transfer from Metro State College in Denver, Colo., Gypsy Hoover is a native of Missoula's Big Sky High School. Only a two-year letterwinner for the Eagles under prep coach Wendy Rigoni, Hoover guided her squad to the state championship in 1989 and 1990. She was named the most inspirational and most improved player, and she earned all-state honors in 1990.

At Metro State under head coach Rhonda McMullen, Hoover redshirted her first season with the Roadrunners. As a freshman she contributed 1.11 kills and .94 digs per game in 36 games last season. She helped lead MSC to a 31-16 record and an appearance in the Division II regionals. She was also the most inspirational player for the Roadrunners.

Hoover also competed in cross country and track and field at Big Sky High.

"Gypsy is a very adequate hitter, who will do a good job of filling one of the back-up positions at left side," Scott said. "She has a couple of years of Division II experience under her belt, and that could help her in the long run."

The daughter of Dynah Giessal and Bob Koss, Gypsy is studying business at UM. She was born on January 7, 1972 in Missoula.

**SARAH HURLBURT**  
**5-8 Sophomore**  
**Outside Hitter**  
**Billings, Montana**

2



Although she only played in four games last season as a redshirt freshman, Sarah Hurlburt will definitely see more playing time this year. In those four games, she averaged 2.85 digs per game.

With the loss of all-conference outside hitters Angie Bellinger and Kathy Young, Hurlburt may possibly start this season. She has an unsuspecting swing that is packed with power.

Hurlburt was one of five redshirts in 1990, and one of only two in-state scholarship winners.

As a prep player, Hurlburt was the only unanimous pick for the "AA" All-State volleyball game, leading the East to the title.

She averaged 3.7 kills, 1.6 digs and 1.0 block per game for Billings West High. She led the Bears to a 25-7 record and was the team MVP. Hurlburt was a first team all-state selection and her team's Outstanding Offensive Player two years in-a-row. She was also the Bears' Most Inspirational player as a senior.

"Sarah had a great spring season, and she is one of our top two left side hitters," Scott said. "She struggled early on, but I told her the ball was in her court, and by the end of the spring she was doing some great things. I really like what I saw in her."

The daughter of David and Marcia Hurlburt of Billings, she is a business administration major. She was born on May 21, 1972.

SEASON	GP	KILLS	ERR	TA	PCT.	KPG	ASS	SA	SE	RE	DIGS	DPG	BS	BA	BPG
1991	4	1	5	13	-.308	0.25	0	0	3	2	9	2.25	1	0	0.25
TOTALS	4	1	5	13	-.308	0.25	0	0	3	2	9	2.25	1	0	0.25



**KIRA KNEITEL**  
**5-11 Freshman**  
**Middle Blocker**  
**Lake Forest, California**

16



One of only two out-of-state recruits for the Lady Griz, Kira (KEER-Uh) Kneitel (Ni-TEL) was an all-state and all-league selection at El Toro High School in El Toro, Calif.

Kneitel was a three-year letter winner for her prep team that won the state championship title in 1992. She led her team in blocks (1.98 per game) and averaged 2.83 kills per game. She was also named the 1992 Most Improved Player.

Four other players on Kneitel's high school team are playing volleyball for Division I schools this year.

Kneitel also played for the Mission Valley Volleyball Club.

"Kira is a multi-talented player," Scott said. "She has good blocking skills, a great serve and a tremendous arm swing. She is a real strong athlete that has had a lot of success in her volleyball career. We're very excited to have her on board."

The daughter of Judy and Mike Curry, Kira is interested in studying wildlife biology. She was born on August 26, 1974.



**TRISH LAKE**  
**6-1 Junior**  
**Outside Hitter**  
**Oak Harbor, Washington**

14

One of only two returning starters, Trish Lake plays right side for the Lady Griz. She is one of only two southpaws on the team. Last year she started all 101 games, averaging 2.72 kills, 2.18 digs and 1.06 blocks per game. She was 10th in the Big Sky Conference in blocking. Last year Lake was the recipient of the Outstanding Player versus the Bobcats award.

Lake redshirted in 1990 after a car accident which left her weak and inactive for almost five months.

As a freshman, Lake was the only Lady Griz to attend the Olympic Festival tryouts in 1990. She averaged 1.6 kills per game and led the team in blocking with 1.13 per game. She holds the school record for most blocks in a single match with 15 against San Francisco as a freshman.

Lake was an all-state, all-area and all-conference pick, as well as conference MVP, as a senior. She led Oak Harbor High to a fifth-place finish in the state Class "3A" tournament.

"Trish became an incredible force for us last year," Scott said. "She does a great job of stopping the opponents' left-side attack, and she does an excellent job of putting balls away. She has made some great strides since last year, and we plan to use her a lot."

The daughter of Lloyd and Nancy Lake of Oak Harbor, Trish was born on April 15, 1971. She is a communication studies major.

SEASON	GP	KILLS	ERR	TA	PCT.	KPG	ASS	SA	SE	RE	DIGS	DPG	BS	BA	BPG
1989	46	73	39	223	.152	1.59	2	7	14	6	45	.98	18	34	1.13
1991	111	302	111	818	.233	2.72	40	21	30	7	242	2.18	28	90	1.06
TOTALS	157	375	150	1041	.216	2.38	42	28	44	13	287	1.83	46	124	1.08





**ANDREA McHUGH**  
**6-0 Freshman**  
**Middle Blocker/Outside Hitter**  
**Butte, Montana**

**11**

After redshirting last season, Andrea McHugh will see some court time at either middle blocker or outside hitter.

McHugh was a three-sport standout for Butte High School, where she led the Bulldogs to a first-place finish in the Western "AA" conference. She was a two-time all-state selection and an all-tournament selection in 1991. "Andi" was also selected to play in the 1991 Montana All-Star game. She was Butte's Outstanding Volleyball Player and Outstanding Female Athlete of the Year as

a senior.

McHugh also lettered in basketball and tennis. She captained her hoop team and was named the Outstanding Basketball Player in 1989. She was also named the Outstanding Tennis Player as a senior.

"Andi will surely be a back-up for Trish at right side," Scott said. "We may even look at the possibility of her doing some left side play also. Andi is very valuable because she can play three different positions."

The daughter of Marilyn McHugh of Butte, Andi is a psychology major. She was born on February 3, 1973.

**JENNIFER MORAN**  
**6-0 Junior**  
**Outside Hitter**  
**Spokane, Washington**

**9**



Jennifer Moran returns to the court this season after redshirting last year. She will most likely return to the starting lineup at left side.

As a sophomore in 1990, Moran was an All-Northwest Regional team selection and was named to the Big Sky all-conference team and the league's all-tournament team. She also earned all-tournament honors at both the Washington State and Utah invitionals. She led the team in kills that season, averaging almost four per game, and she was second in digs, averaging 3.11 per game.

Moran was the 1989 Big Sky co-Outstanding Freshman and an all-conference selection. That season she was named the team's Outstanding Rookie and the Most Inspirational player.

Moran owns the record for most kills in a single match with 40 against Weber State as a freshman. She is ninth on UM's all-time list for digs (578) and hitting percentage (.213).

As a prep player, Moran led Shadle Park High to two straight Class 3A state championships. She was a three-time all-league selection and was an all-state pick and the Greater Spokane League MVP as a senior.

"Jen has a lot of experience and has worked hard to get herself into shape this past spring," Scott said. "Hopefully, she will get everything taken care of academically, because she is just doing a lot of super things out on the court."

A social work major, Moran is the daughter of Michael and Dianne Moran and Bob and JoAnne Sletner, all of Spokane. She was born March 21, 1971. Last July, she married Brad Heuer.

SEASON	GP	KILLS	ERR	TA	PCT.	KPG	ASS	SA	SE	RE	DIGS	DPG	BS	BA	BPG
1989	94	315	135	842	.214	3.35	11	20	33	45	242	2.57	6	41	.50
1990	108	422	195	1066	.213	3.91	9	33	28	64	336	3.11	8	27	.32
TOTALS	202	737	330	1908	.213	3.65	20	53	61	109	578	2.86	14	68	.41



**YUKI MORITA**  
**5-0 Sophomore**  
**Setter/Back Row Specialist**  
**Kobe, Japan**

3



Yuki (YOU-Key) Morita (More-EE-Ta) is a walk-on from Kobe, Japan, who is a quick setter and a tenacious back-row player. At 5-0 in height, she is the shortest player on the team.

Yuki was a six-year team captain for her volleyball team from seventh grade on. At Maiko Senior High School in Hyogo, Japan, Yuki led her 1989 team to the state playoffs.

After graduating from Maiko High in 1990, Morita attended Seattle University for one year before transferring to Montana. While in Seattle, Morita played for a USVBA club team at SU. At Seattle University, Morita was the 1991 Outstanding International Student award winner.

"We are really delighted to have Yuki on our team," Scott said. "She has a great attitude, and she makes people laugh. I think it's good for our team to have some international diversity. Yuki is a great addition to our program. She can play the back-up setter position, but I think we'll use her mostly in the back court. She can dig anything."

The daughter of Tsuneo and Miho Morita, Yuki was born on March 25, 1972. She is studying health and human performance.



**JENNIFER PATERA**  
**5-5 Freshman**  
**Setter**  
**Havre, Montana**

12

Havre's two-time MVP Jennifer Patera will compete with Linde Eidenberg for the starting setter position.

Patera was a three-time all-conference and all-state player for the Blue Ponies. She was also an all-tournament selection in 1991 and 1992. In addition, she was Havre's all-time leading setter with nearly 1,400 career sets.

As a senior, Patera led the Blue Ponies to a 43-5 overall record and the state championship trophy. Two of her volleyball teammates, Brenda Naber and April Sather, are also competing in for the UM Lady Griz. Naber is a high jumper, and Sather is a forward on the Lady Griz hoop team.

Patera earned four letters in track and field and three letters in basketball. A long jumper and sprinter, she was inducted into Havre High's Hall of Fame. She was the Most Improved Player on the Ponies' basketball team.

The daughter of Robert and Lela Patera, Jennifer left Havre High with a 3.9 GPA and is interested in studying sports medicine. She was born on June 10, 1974.





**MICHELLE PETERSON**  
**5-5 Sophomore**  
**Back Row Specialist**  
**Missoula, Montana**

1

Michelle Peterson redshirted her first season with the Lady Griz after walking on. Although "Petey" is listed as a setter, she plays primarily back row. Last year as a freshman she played in 35 games, contributing 23 digs on the season.

A three-sport standout at Big Sky High School in Missoula, Peterson led the Eagles to two consecutive state volleyball titles under former Lady Griz setter Wendy (Hoyt) Rigoni. Averaging 19.6 assists, 3.1 digs and four blocks per game, Peterson was a three-time all-state selection. Team captain as a senior, she was voted her team's Outstanding Setter, Outstanding Server and MVP that year.

Peterson also captained her basketball team that won back-to-back state titles in 1988 and 1989.

She was also team captain and an all-state selection in softball. She was chosen her team's Outstanding Outfielder and Outstanding Offensive Player in 1990.

"We feel really good about having Petey in the back court," Scott said. "She's not afraid to go to the floor, and she really loves the game of volleyball. Michelle has a great work ethic that any coach would love to have in a player."

A health and physical education major, she is the daughter of Jake and Debbie Peterson of Missoula. She was born June 20, 1972.

SEASON	GP	KILLS	ERR	TA	PCT.	KPG	ASS	SA	SE	RE	DIGS	DPG	BS	BA	BPG
1991	35	0	0	0	.000	0.00	1	2	7	5	23	0.66	0	0	0.00
TOTALS	35	0	0	0	.000	0.00	1	2	7	5	23	0.66	0	0	0.00

**INGA SWANSON**  
**6-0 Freshman**  
**Middle Blocker**  
**Pendroy, Montana**

15



Montana's first-ever state class "B" recruit, Inga Swanson comes to UM from Choteau High School. The Bulldogs were conference, district, divisional and state champions in 1989, 1990, 1991 and 1992.

Although she didn't play volleyball as a freshman, Swanson was a three-time all-conference and all-state selection and the 1992 team MVP. She captained her team as a junior and a senior, and she earned the Most Improved Player award as a sophomore.

"Inga had an outstanding high school career," Scott said. "One of the top prep players in the state of Montana, Inga could potentially contribute right away as a back-up middle blocker behind Heidi (Williams) and Karen (Goff). We're excited to have Inga with us."

The daughter of Larry and Bev Swanson of Pendroy, Inga was born on December 26, 1973. She has not declared a major yet.



**SHERI VINION**  
**6-0 Freshman**  
**Outside Hitter**  
**Missoula, Montana**

6



One of two players who redshirted last season, Sheri Vinion is ready to contribute at outside hitter for the Lady Griz this year.

A three-sport standout at Big Sky High School in Missoula, Vinion was a middle blocker/hitter under former Lady Griz coaches Wendy (Hoyt) Rigoni and Mari Brown. Averaging 11 kills and five blocks per game, Vinion helped lead the Eagles to two consecutive state titles. She garnered MVP honors as a senior and was a two-time all-state selection. Team captain as a senior, Vinion was named Best Hitter and Best Defender as a senior.

A four-year letter winner in track, Vinion was voted the Most Valuable Freshman in 1988. She was an all-division and all-state jumper with some of the top marks in the state. Her team won the state championship in 1990.

Vinion captained her basketball team as a senior and was named the Most Valuable Player that year. Her team won the 1988 state championship. She was a two-time all-conference and all-state selection and was named the Best Defender in 1989.

"Sheri is yet to be tested because she has not had the opportunity to compete," Scott said. "However, she has made some great improvements throughout last season as a redshirt and during the spring season. Sheri will really enjoy getting out there and playing after redshirting."

The daughter of Marvin and Betty Vinion of Missoula, she studies accounting at UM. She was born on December 26, 1972.



**HEIDI WILLIAMS**  
**5-11 Sophomore**  
**Middle Blocker**  
**Missoula, Montana**

5

Heidi Williams is one of only two returning starters this season. The favored to start at middle blocker, she and Karen Goff will vie for playing time.

Last season Williams was named UM's Most Improved Player as a redshirt freshman. She played in 82 games, contributing 1.43 kills, 1.89 digs and 1.05 blocks per game. She was 10th in the Big Sky Conference in digs, and she leads the returnees in aces with 21 last season.

Williams also jumps for the Lady Griz track and field team. Last spring she jumped a personal best of 5-7 in the high jump at the UM Invitational, qualifying for the Big Sky Championships.

At Big Sky High School, she was a standout in volleyball, basketball and track. As a senior she averaged 4.43 digs, 1.43 assists, 2.71 aces and 5.29 blocks per game for the Eagles. She was the Eagle MVP, Outstanding Hitter and Outstanding Blocker, and she was a first team all-state selection.

She earned all-state honors in volleyball as a junior and was an all-conference selection in basketball in 1987. She was chosen the track and field team MVP in 1988 and was considered one of the top triple jumpers in the state.

"Heidi has more experience than any of our other sophomores," Scott said. "So we're looking to her for some leadership. I think she had a very good spring, and she works very hard to get stronger and to get quality repetitions."

The daughter of Frank Williams and Margaret Williams of Missoula, she is a journalism major. She was born on January 8, 1972.

SEASON	GP	KILLS	ERR	TA	PCT.	KPG	ASS	SA	SE	RE	DIGS	DPG	BS	BA	BPG
1991	82	117	54	331	.190	1.43	10	21	37	24	155	1.89	17	66	1.01
TOTALS	82	117	54	331	.190	1.43	10	21	37	24	155	1.89	17	66	1.01



## FORMER LADY GRIZ GREATS



*Mari Brown, a native of Spokane, Wash., was a Lady Griz from 1986 - 89.*

Angie Bellinger

1990 & 1991 AVCA Northwest  
All-Region team  
1990 & 1991 All-Big Sky selection  
1991 Big Sky All-Tournament team

Pat Benson

1982 All-Mountain West selection

Mari Brown

1988 & 1989 All-Big Sky selection

Mary Beth Dungan

1983 USVBA Northwest All-Region team  
1983 USVBA Regional All-Tournament team  
1986 All-Mountain West selection  
1986 Academic All-Conference selection

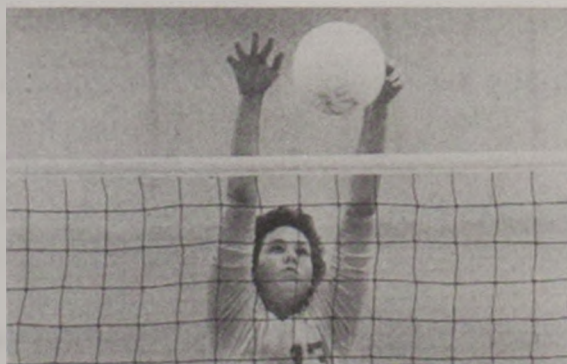
Michelle Hall

Wendy Hoyt-Rigoni

1982 All-Mountain West  
selection

Colleen Jantz

1991 AVCA Northwest All-  
Region team  
1991 All-Big Sky selection  
1991 Big Sky All-Tournament  
team



*Laura Slanec played for Montana from 1982-85. She is a native from North Riverside, Illinois.*



*Mary Beth Dungan (1981-84) is a native of Kent, Wash.*

Mary Klueber

1982 National Sports Festival West team  
1982 All-Mountain West selection  
Hall of Fame inductee

Nan Kuenzel

1985 All-Big Sky selection  
1986 Academic All-American

Mary Pederson

1983 All-Mountain West selection





Ann Schwenke

1988, 1990, 1991 All-Big Sky selection  
 1989, 1990, 1991 Academic All-Big Sky selection  
 1990 & 1991 AVCA Northwest All-Region team  
 1991 Big Sky MVP  
 1990 & 1991 Big Sky All-Tournament team  
 1991 Big Sky All-Tournament MVP  
 1991 GTE District 7 Academic All-American

Laura Slanec

1983 All-Mountain West selection

*Nan Kuenzel, a native of Missoula, played for the Lady Griz from 1982-85.*

Anne Tarleton

1988 All-Big Sky selection

Allison Yarnell

1985, 1986, 1987 All-Mountain West selection  
 1986, 1987, 1988 Academic All-Conference selection

Kathy Young

1989 Academic All-Conference selection  
 1991 All-Big Sky selection  
 1991 Big Sky All-Tournament team

Jennifer Pinkerton

1988 Academic All-Conference selection  
 1990 All-Big Sky selection



*Pat Benson played for the Lady Griz from 1979-82. She is a native of Kent, Wash.*

Cindy Pitzinger

1985, 1986, 1987 All-Mountain West selection  
 1987 All-American candidate  
 1988 United States National Team trials

Kara Price

1982 All-Mountain West selection



*Wendy Hoyt Rigoni (1980-82) is a native of West Lynn, Oregon. She was also an assistant coach for the Lady Griz.*



*Mary Klueber (1980-83) is a native of Anchorage, Alaska. She is the only volleyball player to be inducted into the UM Hall of Fame.*



# — 1992 Lady Griz Opponents —



Location: Corvallis, Ore.  
Enrollment: 16,000  
1991 Overall Record: 14-18  
1991 League Record & Finish: 5-13, 8th  
Athletic Director: Dutch Baughman  
SID: Hal Cowan, Becky Yahn  
SID FAX Number: (503) 737-3072

## Oregon State

Nickname: Beavers  
School Colors: Orange & Black  
Conference: Pac-10  
Head Coach: David Gantt  
Coach's Record @ OSU: 14-18, 1 Yr.  
Phone: (503) 737-2370  
Facility: Gill Coliseum (10,400)



Location: Spokane, Wash.  
Enrollment: 4,200  
1991 Overall Record: 12-16  
1991 League Record & Finish: 7-7, 4th  
Athletic Director: Dan Fitzgerald  
SID: Oliver Pierce  
SID FAX Number: (509) 484-2830

## Gonzaga

Nickname: Bulldogs, Zags  
School Colors: Red, White & Blue  
Conference: West Coast  
Head Coach: Sean Madden  
Coach's Record @ GU: 82-75, 5 Yrs.  
SID Phone: (509) 328-4220, Ext. 6373  
Facility: Martin Centre (4,000)

## Southwest Missouri State



Location: Springfield, Mo.  
Enrollment: 20,672  
1991 Overall Record: 17-13  
1991 League Record & Finish: 8-1, 1st  
Athletic Director: Dr. Mary Jo Wynn  
SID: Jon Ripperger  
SID FAX Number: (417) 836-4868

Nickname: Lady Bears  
School Colors: Maroon & White  
Conference\*\*: Missouri Valley  
Head Coach: Linda Dollar  
Coach's Record @ SWMS: 684-219-21, 20 Yrs.  
SID Phone: (417) 836-5402  
Facility: Hammons Student Center (8,858)

\*\*--Southwest Missouri State belonged to the Gateway Conference last season.

## Cal Poly-San Luis Obispo



Location: San Luis Obispo, Calif.  
Enrollment: 17,000  
1991 Overall Record: 17-16  
1991 League Record & Finish: --  
Athletic Director: Catherine Milligan  
SID: TBA  
SID FAX Number: (805) 756-2650

Nickname: Mustangs  
School Colors: Green & Gold  
Conference: Independent  
Head Coach: Craig Cummings  
Coach's Record @ Poly: 30-39, 2 Yrs.  
SID Phone: (805) 756-6531  
Facility: Mott Gym (3,500)

## UC-Santa Barbara



Location: Santa Barbara, Calif.  
Enrollment: 18,700  
1991 Overall Record: 22-10  
1991 League Record & Finish: 13-5, 4th  
Athletic Director: Jim Romeo  
SID: Kirk Reynolds  
SID FAX Number: (805) 893-4537

Nickname: Gauchos  
School Colors: Blue & Gold  
Conference: Big West  
Head Coach: Kathy Gregory  
Coach's Record @ UCSB: 411-216, 17 Yrs.  
SID Phone: (805) 893-8603  
Facility: Events Center (6,000)

## Michigan



Location: Ann Arbor, Mich.  
Enrollment: 36,306  
1991 Overall Record: 19-12  
1991 League Record & Finish: 10-10, 6th  
Athletic Director: Peggy Bradley-Doppes  
SID: Bruce Madej, Amy Carlton  
SID FAX Number: (313) 747-1188

Nickname: Wolverines  
School Colors: Maize & Blue  
Conference: Big Ten  
Head Coach: Greg Giovanazzi  
Coach's Record @ UM: First Year  
SID Phone: (313) 763-4423  
Facility: Cliff Keen Arena (1,800)

## UC-San Diego



Location: San Diego, Calif.  
Enrollment: 6,000  
1991 Overall Record: 18-14  
1991 League Record & Finish: 7-7, 4th  
Athletic Director: Regina Sullivan  
SID: John Rollo  
SID FAX Number: (619) 292-0388

Nickname: Toreras  
School Colors: Columbia Blue, Navy & White  
Conference: West Coast  
Head Coach: Sue Snyder  
Coach's Record @ UCSD: 33-30, 2 Yrs.  
SID Phone: (619) 260-4745  
Facility: USD Sports Center (2,500)



## — 1992 Lady Griz Opponents —



Location: Fort Collins, Colo.  
Enrollment: 20,600  
1991 Overall Record: 19-12  
1991 League Record & Finish: 4-8, 5th  
Athletic Director: Corey Johnson  
SID: Jim Miller  
SID FAX Number: (303) 491-1348

### Colorado State

Nickname: Rams  
Colors: Green & Gold  
Conference: Western Athletic  
Head Coach: Rich Fuller  
Coach's Record @ CSU: 205-104, 9 Yrs.  
SID Phone: (303) 491-5067  
Facility: Moby (9,001)



Location: Santa Clara, Calif.  
Enrollment: 7,800  
1991 Overall Record: 26-11  
1991 League Record & Finish: 10-4, 2nd  
Athletic Director: Tom O'Connor  
SID: Jim Young  
SID FAX Number: (408) 554-6942

### Santa Clara

Nickname: Broncos  
School Colors: Red & White  
Conference: West Coast  
Head Coach: Laurie Corbelli  
Coach's Record @ SCU: 40-24, 2 Yrs.  
SID Phone: (408) 554-4661  
Facility: Toso Pavilion (5,000)



Location: Reno, Nev.  
Enrollment: 11,800  
1991 Overall Record: 8-18  
1991 League Record & Finish: 3-13, 9th  
Athletic Director: Angie Taylor  
SID: Dean Watson  
SID FAX Number: (702) 784-4386

### Nevada

Nickname: Lady Pack  
School Colors: Silver & Blue  
Conference\*\*: Big West  
Head Coach: Paul Lenae  
Coach's Record @ UN: 8-18, 1 Yr.  
SID Phone: (702) 784-4600  
Facility: Old Gym (264)

\*\*--Nevada belonged to the Big Sky Conference last season.



Location: San Jose, Calif.  
Enrollment: 29,000  
1991 Overall Record: 12-14  
1991 League Record & Finish: 7-11, 6th  
Athletic Director: Tom Brennan  
SID: Karen Rosenzweig  
SID FAX Number: (408) 924-1291

### San Jose State

Nickname: Spartans  
School Colors: Gold, White & Blue  
Conference: Big West  
Head Coach: John Corbelli  
Coach's Record @ SJS: 33-19, 2 Yrs.  
SID Phone: (408) 924-1216  
Facility: The Event Center (4,600)



Location: Northridge, Calif.  
Enrollment: 31,000  
1991 Overall Record: 16-18  
1991 League Record & Finish: ---  
Athletic Director: Robert J. Hiebert  
SID: Barry Smith  
SID FAX Number: (818) 885-4762

### Cal State-Northridge

Nickname: Matadors  
School Colors: Red, White & Black  
Conference: Independent  
Head Coach: Walt Ker  
Coach's Record @ CSN: 371-133, 13 Yrs.  
SID Phone: (818) 885-3243  
Facility: Matador Gym (3,000)



Location: Morehead, Ky.  
Enrollment: 8,812  
1991 Overall Record: 17-11  
1991 League Record & Finish: 9-5, 3rd  
Athletic Director: Steve Hamilton  
SID: Randy Stacy  
SID FAX Number: (606) 783-2550

### Morehead State

Nickname: Lady Eagles  
School Colors: Blue & Gold  
Conference: Ohio Valley  
Head Coach: Mike Welch  
Coach's Record @ MSU: 17-11, 1 Yr.  
SID Phone: (606) 783-2500  
Facility: Wetherby Gym (5,000)



Location: Los Angeles, Calif.  
Enrollment: 3,900  
1991 Overall Record: 17-12  
1991 League Record & Finish: 8-6, 3rd  
Athletic Director: Brian Quinn  
SID: Ross Vitale  
SID FAX Number: (310) 338-2703

### Loyola Marymount

Nickname: Lions  
School Colors: Crimson, Gray & Blue  
Conference: West Coast  
Head Coach: Steve Stratos  
Coach's Record @ LM: 38-28, 2 Yrs.  
SID Phone: (310) 338-7638  
Facility: Gersten Pavilion (4,156)



## — 1992 Lady Griz Opponents —



Location: Atlanta, Ga.  
Enrollment: 12,000  
1991 Overall Record: 27-9  
1991 League Record & Finish: 3-4, 4th  
Athletic Director: Bernadette McGlade  
SID: Teri Washington  
SID FAX Number: (404) 873-4440

### Georgia Tech

Nickname: Yellow Jackets  
School Colors: Old Gold & White  
Conference: Atlantic Coast  
Head Coach: Shelton Collier  
Coach's Record @ GT: 27-9, 1 Yr.  
SID Phone: (404) 853-2674  
Facility: Heisman Gym (2,000)



Location: West Lafayette, Ind.  
Enrollment: 36,163  
1991 Overall Record: 13-16  
1991 League Record & Finish: 10-10, 6th  
Athletic Director: John W. Hicks  
SID: Tom Schott  
SID FAX Number: (317) 494-5447

### Purdue

Nickname: Boilermakers  
School Colors: Old Gold & Black  
Conference: Big Ten  
Head Coach: Carol Dewey  
Coach's Record @ PU: 431-206, 17 Yrs.  
SID Phone: (317) 494-3200  
Facility: Athletic Facility (1,650)



Location: Notre Dame, Ind.  
Enrollment: 10,037  
1991 Overall Record: 26-10  
1991 League Record & Finish: 5-0, 1st  
Athletic Director: Richard Rosenthal  
SID: Rose Pietrzak  
SID FAX Number: (219) 271-1660

### Notre Dame

Nickname: Fighting Irish  
School Colors: Gold & Blue  
Conference: Midwest Collegiate  
Head Coach: Debbie Brown  
Coach's Record @ ND: 26-10, 1 Yr.  
SID Phone: (219) 239-7516  
Facility: Joyce Convocation Center (11,418)



Location: Gainesville, Fla.  
Enrollment: 34,500  
1991 Overall Record: 35-5  
1991 League Record & Finish: 15-2, 1st  
Athletic Director: Ann Marie Lawler  
SID: TBA  
SID FAX Number: (904) 375-4809

### Florida

Nickname: Gators  
School Colors: Orange & Blue  
Conference: Southeastern  
Head Coach: Mary Wise  
Coach's Record @ UF: 35-5, 1 Yr.  
SID Phone: (904) 375-4683, Ext. 6120  
Facility: O'Connell Center (12,000)



Location: Portland, Ore.  
Enrollment: 2,400  
1991 Overall Record: 16-16  
1991 League Record & Finish: 7-7, 4th  
Athletic Director: Joe Etzel  
SID: Steve Walker  
SID FAX Number: (503) 283-7242

### Portland

Nickname: Pilots  
School Colors: Purple & White  
Conference: West Coast  
Head Coach: Carl Neuburger  
Coach's Record @ UP: 144-130, 8 Yrs.  
SID Phone: (503) 283-7117  
Facility: Chiles Center (5,000)



Location: Boise, Idaho  
Enrollment: 13,500  
1991 Overall Record: 16-13  
1991 League Record & Finish: 9-7, 4th  
Athletic Director: Carol Ladwig  
SID: Lori Orr Hays  
SID FAX Number: (208) 385-3361

### Boise State

Nickname: Broncos  
School Colors: Blue & Orange  
Conference: Big Sky  
Head Coach: Darlene Bailey Pharmed  
Coach's Record @ BSU: 264-152, 13 Yrs.  
SID Phone (208) 385-3438  
Facility: Bronco Gym (1,300)



Location: Cheney, Wash.  
Enrollment: 8,000  
1991 Overall Record: 13-16  
1991 League Record & Finish: 4-12, 7th  
Athletic Director: Dick Zornes  
SID: Dave Cook  
SID FAX Number: (509) 359-2828

### Eastern Washington

Nickname: Eagles  
School Colors: Red & White  
Conference: Big Sky  
Head Coach: Pam Parks  
Coach's Record @ EWU: 161-143, 10 Yrs.  
SID Phone: (509) 359-6334  
Facility: Reese Court (5,000)



## — 1992 Lady Griz Opponents —



Location: Moscow, Idaho  
Enrollment: 14,202  
1991 Overall Record: 13-16  
1991 League Record & Finish: 8-8, 6th  
Athletic Director: Gary Hunter  
SID: Roger McAfee  
SID FAX Number: (208) 885-0255

### Idaho

Nickname: Vandals  
School Colors: Silver & Gold  
Conference: Big Sky  
Head Coach: Tom Hilbert  
Coach's Record @ UI: 42-45, 3 yrs.  
SID Phone: (208) 885-0245  
Facility: Memorial Gym (3,000)



Location: Pocatello, Idaho  
Enrollment: 10,238  
1991 Overall Record: 18-17  
1991 League Record & Finish: 9-7, 4th  
Athletic Director: Randy Hoffman  
SID: Dave Geringer  
SID FAX Number: (208) 236-3659

### Idaho State

Nickname: Bengals  
School Colors: Black & Orange  
Conference: Big Sky  
Head Coach: Jon Potter  
Coach's Record @ ISU: 79-52, 4 Yrs.  
SID Phone: (208) 236-2621  
Facility: Reed Gym (3,600)



Location: Bozeman, Mont.  
Enrollment: 10,100  
1991 Overall Record: 6-19  
1991 League Record & Finish: 3-13, 8th  
Athletic Director: Dr. Ginny Hunt  
SID: Tom Schulz  
SID FAX Number: (406) 994-4102

### Montana State

Nickname: Bobcats  
School Colors: Blue & Gold  
Conference: Big Sky  
Head Coach: Carl Weissman  
Coach's Record @ MSU: First Year  
SID Phone: (406) 994-5130  
Facility: Shroyer Gym (1,600)



Location: Flagstaff, Ariz.  
Enrollment: 17,698  
1991 Overall Record: 26-8  
1991 League Record & Finish: 12-4, 2nd  
Athletic Director: Kelly Patton  
SID: Pat Rowe  
SID FAX Number: (602) 523-6793

### Northern Arizona

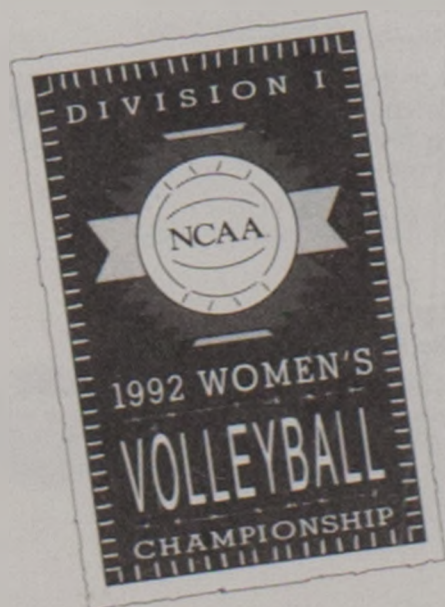
Nickname: Lady Jacks  
School Colors: Blue & Gold  
Conference: Big Sky  
Head Coach: Kim Hudson  
Coach's Record @ NAU: 26-8, 1 Yr.  
SID Phone: (602) 523-6330  
Facility: Rolle Activity Center (2,500)



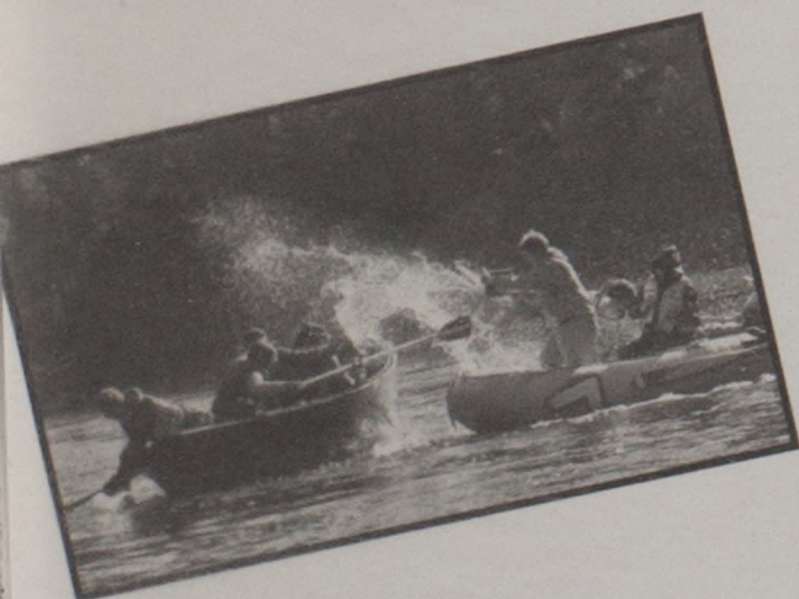
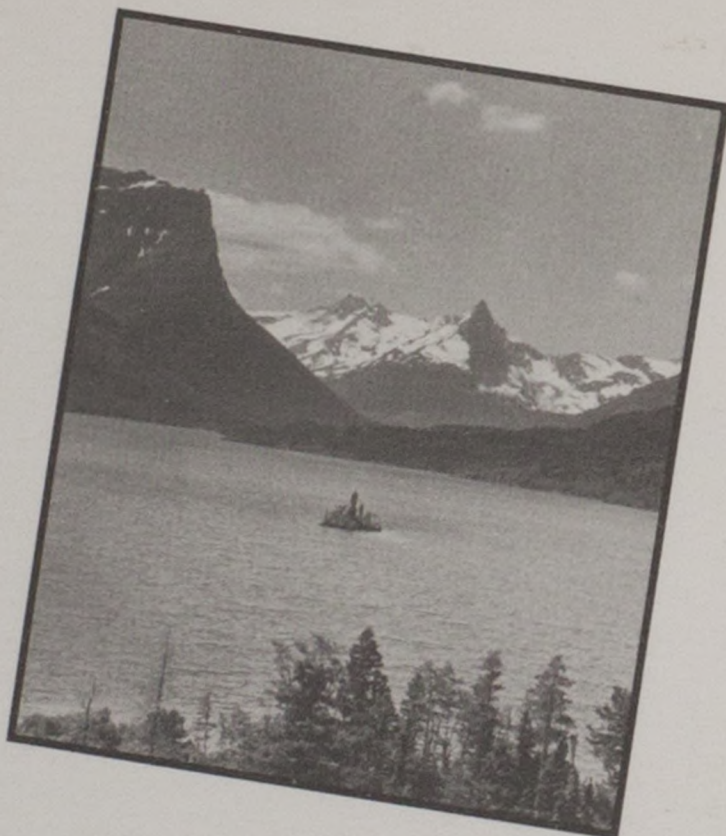
Location: Ogden, Utah  
Enrollment: 14,500  
1991 Overall Record: 13-20  
1991 League Record & Finish: 8-8, 5th  
Athletic Director: TBA  
SID: Nan Holyoak  
SID FAX Number: (801) 626-6490

### Weber State

Nickname: Wildcats  
School Colors: Purple & White  
Conference: Big Sky  
Head Coach: Lesa Moore  
Coach's Record @ WSU: 33-66, 3 Yrs.  
SID Phone: (801) 626-6012  
Facility: Dee Events Center (11,500)







MAKE TRACKS TO THE  
UNIVERSITY CENTER!



**UNIVERSITY  
CENTER** The University  
of Montana



