

University of Montana

ScholarWorks at University of Montana

Montana Masquers Event Programs, 1913-1978

University of Montana Publications

5-3-1921

Her Husband's Wife, 1921

State University of Montana (Missoula, Mont.). Montana Masquers (Theater group)

Follow this and additional works at: <https://scholarworks.umt.edu/montanamasquersprograms>

Let us know how access to this document benefits you.

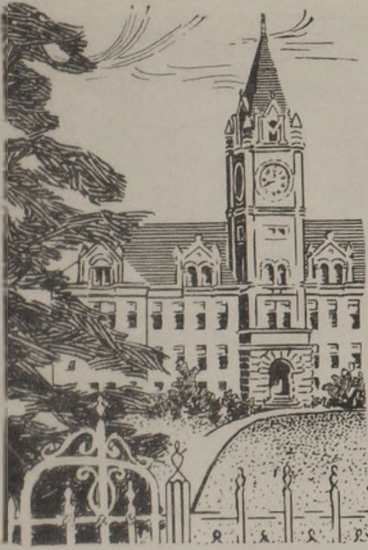
Recommended Citation

State University of Montana (Missoula, Mont.). Montana Masquers (Theater group), "Her Husband's Wife, 1921" (1921). *Montana Masquers Event Programs, 1913-1978*. 12.

<https://scholarworks.umt.edu/montanamasquersprograms/12>

This Program is brought to you for free and open access by the University of Montana Publications at ScholarWorks at University of Montana. It has been accepted for inclusion in Montana Masquers Event Programs, 1913-1978 by an authorized administrator of ScholarWorks at University of Montana. For more information, please contact scholarworks@mso.umt.edu.

archives



STATE UNIVERSITY OF MONTANA

MISSOULA

University Masquers

UNDER THE DIRECTION OF

ALEXANDER DEAN

Of the Department of English

PRESENT

A. E. Thomas' Farce Comedy

“Her Husband’s Wife”

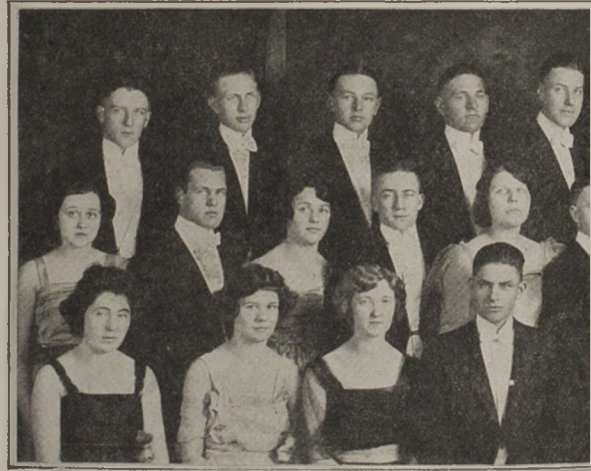
ITINERARY

Deer Lodge	May 3	Hardin	May 11
Helena	May 4	Bozeman	May 12
Townsend	May 5	Boulder	May 13
Livingston	May 6	Butte	May 14
Big Timber	May 7	Galen	May 16
Red Lodge	May 9	Milltown	May 31
Laurel	May 10	Stevensville	June 1
Missoula	June 3		



THE PLAYERS

Maurice Angland.....	Great Falls
Malcolm Boucher	Missoula
Matthew Brown	Great Falls
Olaf Bue	Kalispell
Fay Collins	Anaconda
Roger Deeney	Butte
Mary Elizabeth Doerr.....	Butte
Kathryn Donohue	Missoula
Carl Dragstedt	Missoula
Carl Drews	Missoula
James Farmer	Missoula
Robert Fuller	Helena
Jack Fogle	Billings
Harold Garrett	Baker
Sam Goza, Jr.	Helena
Helen Gregory	Billings
Herbert Graybeal	Cascade
Anne Hall	Missoula
Eugene Harpole	Billings
John Harvey	Livingston
Elizabeth Hathorn	Billings
Alice Hershey	Missoula
Clara Hoar	Butte
A. Erwin Hobart.....	Missoula
Rachel Jordan.....	Columbia Falls
LeRoy Kershner	Billings
Lahman Lambert	Kalispell
Wallace Lebkicher.....	Miles City
Helen A. Little.....	Butte
Gayle Martin	Glendive
Azlyn Mascotte	Missoula



HER HUSBAND

CAST OF CHARACTERS

Stuart Randolph
Richard Belden
John Belden
Irene Randolph
Emily Ladew
Marie

All three acts take place in the living room of the season at Saratoga.

EXECUTIVE STAFF

Director
Coach
Producer
Stage Director
Property Manager
Costumer
Press Agent
Art Director
Business Manager
Treasurer
Advertising Manager
Make Up



THE PLAYERS

AND'S WIFE

CHARACTERS

..... Theodore Ramsey
 Russell Niles
 Raymond Nagle
 Mary Elizabeth Doerr
 Florence Sanden
 Hazel Watters
 Summer home at the Randolph's during the racing

E BOARD

..... Mr. Dean
 Lillian Scott
 Helena Hutchens
 Verne Needham
 Bonna Pearsall
 Frances Carson
 Gladys Robinson
 William Hughes
 William Jameson
 Virgil Wilson
 Arthur Redding
 Miss Leyda

Arthur Mattson Butte
 Cresap McCracken Livingston
 Gertrude Moody Missoula
 Norine Murphy Helena
 Raymond Murphy Anaconda
 Raymond Nagle Helena
 Russell Niles Livingston
 Alvin Olsen Havre
 Bonna Pearsall Thompson Falls
 Theodore Ramsey Lewistown
 Arthur Redding Helena
 Gordon Reynolds Stevensville
 Harold Reynolds Butte
 Charles Roberts Missoula
 Florence Sanden Helena
 Lillian Sappington Butte
 Lillian Scott Helena
 Karl Scharf Warm Springs
 Mattie Sharp Stevensville
 Paul Smith Helena
 Maribel Spelman Anaconda
 Irma Stark Livingston
 Russell Stark Livingston
 Eloise Storey Hardin
 Helene Symons Butte
 Salome Torrance Butte
 Lloyd Thompson Butte
 Hazel Watters Missoula
 Margaret Wickes Missoula
 Virgil Wilson Billings
 Ruth Winans Livingston
 Virginia Yegen Billings



THE PLAYS

COMEDY

FOUR-FLUSHERS

Cleves Kincaid

THE LOST SILK HAT

Dunsany

FARCE

HER HUSBAND'S WIFE

A. E. Thomas

SEVEN KEYS TO BALDPATE

George M. Cohan

HISTORICAL

ABRAHAM LINCOLN

John Drinkwater

SOCIAL DRAMA

MRS. DANE'S DEFENSE

Henry Arthur Jones

THE THIEF

Henri Bernstein

TRIFLES

Susan Glaspell

TRAGEDY

RIDERS TO THE SEA

John M. Synge

THE TRAGEDY OF NAN

John Masefield

MELODRAMA

THE RAT TRAP

English 70

FANTASY

THE SIX WHO PASS WHILE THE LENTILS BOIL

Stuart Walker

PERFORMANCES

Missoula 22, Stevensville 3, Ronan 2, Polson 3, Dixon, Hamilton, Orchard Homes, Wallace, Idaho; Kellogg, Idaho; Deer Lodge 2, Helena, Red Lodge, Livingston, Big Timber, Butte, Townsend, Boulder, Bozeman, Galen, Laurel, Hardin, Milltown, Kalispell, St. Ignatius, Mullan, Idaho. Total 52.