

University of Montana

ScholarWorks at University of Montana

Lady Griz Basketball Media Guides, 1978-2009

Intercollegiate Athletics

9-1-1989

Lady Griz Basketball Media Guide, 1989-1990

University of Montana (Missoula, Mont. : 1965-1994). Athletics Department

Follow this and additional works at: https://scholarworks.umt.edu/ladygrizbasketball_mediaguides

Let us know how access to this document benefits you.

Recommended Citation

University of Montana (Missoula, Mont. : 1965-1994). Athletics Department, "Lady Griz Basketball Media Guide, 1989-1990" (1989). *Lady Griz Basketball Media Guides, 1978-2009*. 13.

https://scholarworks.umt.edu/ladygrizbasketball_mediaguides/13

This Guide is brought to you for free and open access by the Intercollegiate Athletics at ScholarWorks at University of Montana. It has been accepted for inclusion in Lady Griz Basketball Media Guides, 1978-2009 by an authorized administrator of ScholarWorks at University of Montana. For more information, please contact scholarworks@mso.umt.edu.

The Way the West Was Won



THE UNIVERSITY OF MONTANA . . . AMERICA'S MOST BEAUTIFUL CAMPUS!

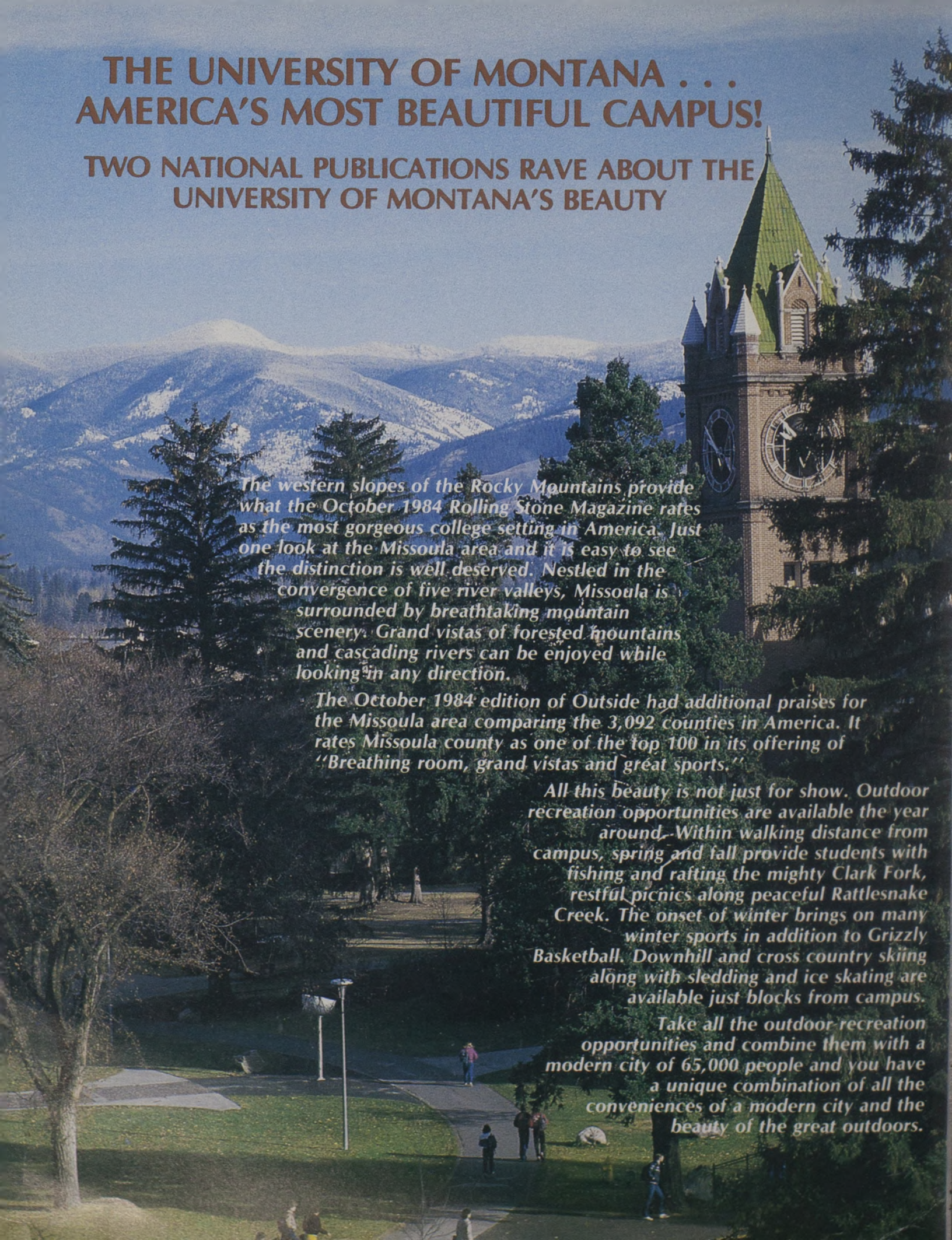
TWO NATIONAL PUBLICATIONS RAVE ABOUT THE UNIVERSITY OF MONTANA'S BEAUTY

The western slopes of the Rocky Mountains provide what the October 1984 Rolling Stone Magazine rates as the most gorgeous college setting in America. Just one look at the Missoula area and it is easy to see the distinction is well deserved. Nestled in the convergence of five river valleys, Missoula is surrounded by breathtaking mountain scenery. Grand vistas of forested mountains and cascading rivers can be enjoyed while looking in any direction.

The October 1984 edition of Outside had additional praises for the Missoula area comparing the 3,092 counties in America. It rates Missoula county as one of the top 100 in its offering of "Breathing room, grand vistas and great sports."

All this beauty is not just for show. Outdoor recreation opportunities are available the year around. Within walking distance from campus, spring and fall provide students with fishing and rafting the mighty Clark Fork, restful picnics along peaceful Rattlesnake Creek. The onset of winter brings on many winter sports in addition to Grizzly Basketball. Downhill and cross country skiing along with sledding and ice skating are available just blocks from campus.

Take all the outdoor recreation opportunities and combine them with a modern city of 65,000 people and you have a unique combination of all the conveniences of a modern city and the beauty of the great outdoors.



1989-90 LADY GRIZ BASKETBALL YEARBOOK

QUICK FACTS

Location Missoula, Montana
 Chartered February 17, 1893
 Enrollment 9,679
 Nickname Lady Griz
 Colors Copper, Silver & Gold
 Home Court Dahlberg Arena (9,057)
 Conference Big Sky
 Acting Athletic Director Kathy Noble
 Assistant SID Linda K. McCarthy
 (406) 243-6899
 Athletic Trainer Mary McElwain

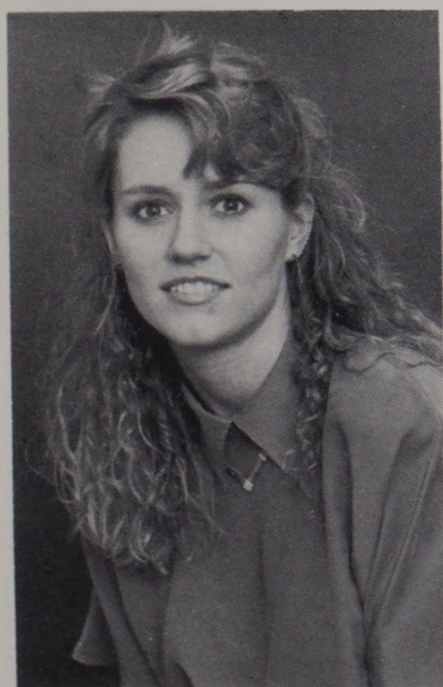
Head Coach Robin Selvig
 Coach's Record at Montana 259-69 (11 yrs.)
 Coach's Collegiate Record 259-69 (11 yrs.)
 Assistant Coach Annette Whitaker-Rotheleau
 Basketball Office Phone (406) 243-5334
 1988-89 Overall Record 27-4
 1988-89 Conference Record 16-0
 National Finish 2nd Round NCAA
 1988-89 Offensive Average 71.3
 1988-89 Defensive Average 41.8
 Returning Letterwinners 11
 Returning Starters 3

Mailing Address: Department of Intercollegiate Athletics
 University of Montana
 Adams Field House
 Missoula, MT 59812
 (406) 243-5331

TABLE OF CONTENTS

2	University of Montana
3	1989-90 Schedule/Trivia
4	Lady Griz Outlook
5	Team Photo and Roster
6	Head Coach Robin Selvig
7	Assistant Coaches
8-17	Lady Griz Profiles
17	Final 1988-89 Lady Griz Stats
18	1988-89 Results/Season Highs/Lows
19-21	The Record Book
22-24	The Opponents

This media guide was written and edited by Linda McCarthy. "Lady Griz Outlook" courtesy of Linda Reaves. Team photo and back cover by Geoffrey Sutton. Cover photo by Mark Bryant. All other photo's courtesy of Howard Skaggs. "Lady Griz Trivia" courtesy of Chris Walterskirshen.



After working as a student assistant in Sports Information for three years, Linda McCarthy begins her first year as Assistant Sports Information Director. Her responsibilities include publications, press releases and promotions, game and cumulative statistics and research for women's sports at UM. She will graduate in June with a B.A. in Interpersonal Communications with an emphasis in Journalism. Linda, 23, is single.

For further information concerning women's sports at UM, contact Assistant SID Linda McCarthy at (406) 243-5414.

UNIVERSITY OF MONTANA



The University of Montana in Missoula is located in a mountain forest setting in beautiful Western Montana. It is halfway between Glacier and Yellowstone national parks.

Four wilderness areas are located near Missoula. The natural surroundings offer excellent opportunities for hunting, fishing, backpacking, river floating, camping and other outdoor recreational pursuits. Two excellent winter ski areas are located within minutes of the University. Several other ski areas are only a couple of hours away by car. UM owns and operates its own golf course adjacent to campus.

The University of Montana is one of the West's pioneers in education and was chartered February 17, 1893. The school opened in September 1895, with 50 students enrolling the first day. Located on 201 acres at the base of Mount Sentinel, UM has grown from 50 students and seven faculty members to a present enrollment of 9,679 and approximately 450 full-time faculty positions.

Through its history, the University of Montana has sus-

tained a high standard of academic excellence in teaching, research and service.

UM offers associate of arts degrees in two areas and bachelors degrees in 58 fields. It offers master's degrees in 54 programs and doctoral degrees in 13.

The College of Arts and Sciences, which is the core of the University, includes a full range of programs and courses in the life sciences, physical sciences, social sciences and humanities. The College also offers curricula in interdisciplinary fields ranging from ethnic studies to interdepartmental studies.

Seven professional schools complete the academic program — Business Administration, Fine Arts, Journalism, Education, Forestry, Law, and Pharmacy and Allied Health Sciences.

The aim of the University is to provide its students with relaxing and meaningful learning experience with the best facilities possible. The administration, faculty and staff strive for this goal.

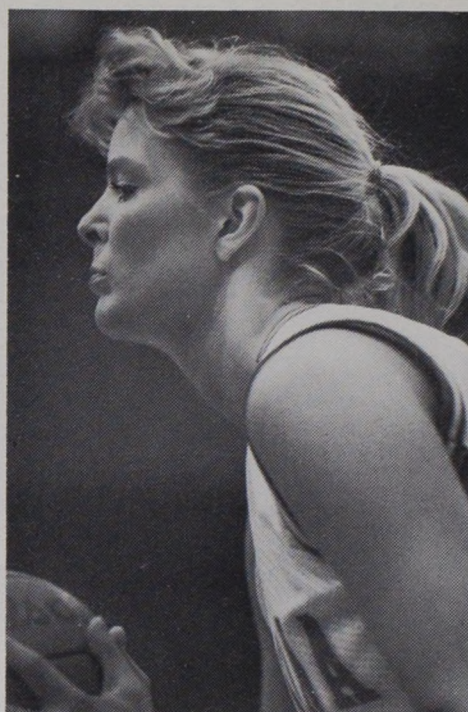
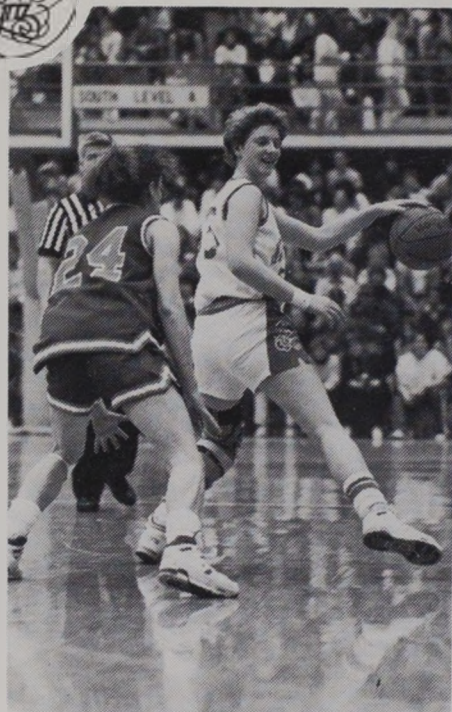
1989-90 SCHEDULE

November 26	Washington	Missoula	2:00
December 1-2	Domino's Pizza Classic (Bowling Green, Kansas State, Portland)	Missoula	7:00 9:00
December 8	Brigham Young	Provo, UT	5:00
December 9	Utah	Salt Lake City	5:15
December 11	Southern Utah State	Cedar City, UT	7:30
December 17	Gonzaga	Spokane, WA	7:30
December 20-21	Golden Bear Classic (California, San Francisco, Texas Christian)	Berkeley, CA	6:00 8:00
December 30	Washington State	Missoula	2:00
December 31	Portland State	Missoula	2:00
January 5	Boise State	Missoula	7:30
January 6	Weber State	Missoula	7:30
January 11	Northern Arizona	Flagstaff, AZ	7:00
January 13	Nevada-Reno	Reno, NV	7:00
January 19	Idaho	Missoula	7:30
January 20	Eastern Washington	Missoula	7:30
January 26	Idaho State	Missoula	7:30
January 28	Montana State	Bozeman	1:30
February 1	Boise State	Boise, ID	5:30
February 3	Weber State	Ogden, UT	7:30
February 9	Nevada-Reno	Missoula	7:30
February 10	Northern Arizona	Missoula	7:30
February 15	Idaho State	Pocatello, ID	7:30
February 23	Eastern Washington	Cheney, WA	7:30
February 24	Idaho	Moscow, ID	7:30
March 3	Montana State	Missoula	7:30
March 9-10	Big Sky Conference Championship	TBA	TBA

LADY GRIZ TRIVIA

- The University of Montana's first intercollegiate women's basketball team began play during the 1974-75 season.
- Robin Selvig's first win as Montana's head coach was a 69-68 victory over Montana Tech in Butte on Dec. 6, 1978.
- The Lady Griz had their first 20-win season in 1980-81 with a record of 22-5.
- Montana's women's basketball team was known as the Grizzlies until the 1982-83 season when the nickname Lady Griz was adopted.
- Since joining their current conference alignment in 1982, the Lady Griz have a 106-8 record against conference members.
- The Lady Griz have won 20 straight games against league members.
- Since he took over the Lady Griz program, Robin Selvig has signed more players from Missoula's Big Sky High School than any other school. Those players include Marti Leibenguth, Kris Moede, Patricia Olson and Ann Lake.
- The out-of-state high school that has sent the Lady Griz the most players is Magic City High School of Minot, North Dakota. Players from there include Juli Eckman, Anita Novak and Laurie Strube.
- The Lady Griz have not lost two regular season games in-a-row since January of 1985 when they lost to Eastern Washington and Idaho on the road.
- The Lady Griz have not lost a regular season home game since February of 1985 when they lost to Idaho.
- While Jill Greenfield (1979-81) holds the Lady Griz single game scoring record of 32, Sharla Murali (1982-85) holds the home scoring record with 31 against Montana State in 1984.

LADY GRIZ OUTLOOK



"Success is a Tradition"

Lady Griz basketball fans have come to expect success and head coach Robin Selvig's teams have delivered. Over the past four seasons, UM has posted records of 27-4, 26-5, 28-2 and 27-4. UM has advanced to the NCAA second round two years in-a-row.

The 1989-90 squad will feature three starters and seven other letterwinners from last season's Big Sky Conference championship team. Five high school standouts join the returnees.

There will be big shoes to fill as all-time leading scorer Lisa McLeod and three-year starter Cheryl Brandell have both graduated. But Selvig is pleased with the team's experience.

"We have good experience returning, not just the starters but also the reserves," he said. "We have players who have played very well in reserve roles."

The three returning starters are seniors Jean McNulty and Vicki Austin and sophomore Shannon Cate.

McNulty, a 6-0 forward from Whitehall, was a first team all-conference selection last season. She averaged 13.7 points and 5.8 rebounds and is the leading returnee in both categories. She ranked second in the conference in field goal percentage, hitting 52.9 percent of her shots.

Austin, a 5-7 point guard from East Moline, Illinois, averaged 10.6 points, 2.5 rebounds and 3.8 assists. She was a second team all-conference selection and the Big Sky's Outstanding Newcomer.

Cate, a 6-1/2 forward from Billings, averaged 10.1 points, 4.8 rebounds and 3.3 assists. She is the highest-scoring freshman in UM basketball history and shared the conference's Freshman of the Year award last season. Shannon also set a school record with 37 three-point field goals. She was an honorable mention all-conference pick.

The other returning letterwinners are senior centers Kris Haas and Linda Mendel, junior guard/forward Marti Kinzler, junior forward Terre Tracy, junior guard Colleen McNally, sophomore forward Marietta Bahnmiller and sophomore guard Julie Epperly.

Kinzler is the projected starter at the off guard and is also expected to see action at the small forward. She averaged 4 points and 3.6 rebounds as the team's "sixth man" last season.

Haas and Mendel are expected to battle for the starting center job vacated by McLeod. Haas, a 6-3 Florence native, averaged 3.1 points and 3.7 rebounds. She was among the league leaders in blocked shots, averaging 1.4 per game. Mendel averaged 1.5 points and 2.7 rebounds.

The newcomers are forwards Ann Lake and Patricia Olson,

guards Kristin Omlid and Joy Anderson and center Kim Venik.

Lake and Olson both hail from Missoula's Big Sky High. Lake averaged 16 points and 10 rebounds and earned all-state honors last season. Olson averaged 12 points and 5.5 rebounds and led the team with 56 blocked shots. She was a second team all-state choice. Big Sky was the state Class "AA" champion in 1987 and 1988.

Omlid averaged 15 points, 5 rebounds and 3 assists as a junior at Stevensville High. She missed her senior year because of a knee injury. She was a two-time all-state selection.

Anderson comes to UM from Hutchinson, Minnesota. At Hutchinson High she averaged 18 points, 8 rebounds and 7 assists last season. She holds the school single-season records for points, assists and steals. She was an all-state pick and played in the Minnesota all-star game as a senior.

Venik averaged 12 points and 9.5 rebounds at Doherty High in Colorado Springs last year. At 6-4, she is the tallest player ever to sign with the Lady Griz.

"I think we had a nice recruiting year," Selvig said. "We'll have to wait and see how much they play right away."

UM will be tested early as it opens the season against the University of Washington Nov. 26 in Missoula. Washington was in the Top 20 much of last season and advanced to the second round of the NCAA tournament.

Other top non-conference opponents include Utah, BYU, Gonzaga and Washington State.

The Lady Griz are also playing in two tournaments. UM hosts Bowling Green, Kansas State and Portland State in the Domino's Pizza Classic Dec. 1-2 in Missoula. Bowling Green was an NCAA Tournament participant last year. Montana is also playing in the Golden Bear Classic Dec. 21-22 in Berkeley, California. The other participating teams are California, San Francisco and Texas Christian.

"I think we have a good schedule. We open with a great game. Washington should be one of the favorites in the Pac 10," said Selvig. "Our tournament should be really good with Bowling Green playing in the NCAA's and Kansas State finishing third in the Big Eight."

UM should be among the favorites for the Big Sky title. The Lady Griz have seven of the last eight regular season conference titles.

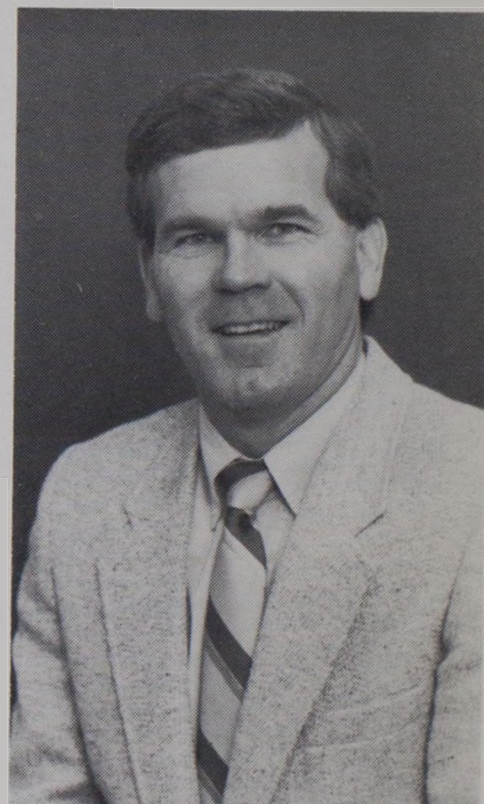
Selvig said he expects Montana State and Northern Arizona to be among the top challengers for the conference championship, but that "lots of other teams could be in the hunt."



UNIVERSITY OF MONTANA

1989-90 LADY GRIZ NUMERICAL ROSTER

NO.	NAME	POS.	HT.	YR.	EXP.	HOMETOWN/SCHOOL
10	Kristin Omlid	G	5-9	FR	HS	Stevensville, MT/Stevensville HS
11	Colleen McNally	G	5-6	SO	1V	Ovando, MT/Seeley-Swan HS
12	Joy Anderson	G	5-10	FR	HS	Hutchinson, MN/Hutchinson HS
15	Julie Epperly	G	5-6	SO	1V	Kalispell, MT/Flathead HS
21	Shannon Cate	F	6-½	SO	1V	Billings, MT/Central HS
23	Vicki Austin	G	5-7	SR	1V	E. Moline, IL/Long Beach State
25	Jean McNulty	F	6-0	SR	3V	Whitehall, MT/Whitehall HS
31	Patricia Olson	F	6-1	FR	HS	Missoula, MT/Big Sky HS
33	Marti Kinzler	G-F	5-11	JR	2V	Fairview, MT/Fairview HS
35	Linda Mendel	C	6-1	SR	3V	Malta, MT/Malta HS
41	Terre Tracy	F	6-0	JR	2V	Great Falls, MT/C.M. Russell HS
43	Ann Lake	F	6-0	FR	HS	Missoula, MT/Big Sky HS
45	Marietta Bahnmler	F	6-0	SO	1V	Big Sandy, MT/Big Sandy HS
53	Kris Haasl	C	6-3	SR	3V	Florence, MT/Florence HS
55	Kim Venik	C	6-4	FR	HS	Colorado Springs, CO/Doherty HS



HEAD COACH

Robin Selvig
(Montana, 1974)

With nine 20-win seasons in-a-row, University of Montana Lady Griz head basketball coach Robin Selvig is the winningest basketball coach in Montana history. His 259-69 win-loss record makes him one of the 15 winningest active Division I women's basketball coaches. Selvig has been named the Big Sky Conference Coach of the Year six times (1983, 84, 86, 87, 88, 89) and has accumulated a 79.8 winning percentage in his 11 years at Montana.

Success at Montana came quickly for Selvig as he led his team to 13 wins in his first season at the helm (a school record). In his third season, the Lady Griz won 22 games, and the string of 20-plus wins each year has now reached nine in-a-row. During his tenure, UM has averaged 23 wins per season.

Selvig has been noted as a defensive-oriented coach in the past, but his squad averaged 71.3 points per game in offense last season. This balanced approach has made him one of the more successful coaches in the country. The Lady Griz have led the nation in scoring defense four times (1982, 84, 86, 88) and have been nationally ranked

in defense all eight seasons that the NCAA has kept women's basketball statistics.

Defense was also important to Selvig when he played guard for UM from 1971 to 1974. He was an All-Big Sky Conference pick as a senior and was selected the winner of the John Eaheart Award for the most outstanding defensive player. That same year he was awarded the school's top athletic award, the Grizzly Cup. In 1983 Selvig was inducted into the Grizzly Basketball Hall of Fame.

He earned his bachelor's degree in Health and Physical Education at UM in 1974.

Selvig came to UM from Plentywood High School near his hometown of Outlook, Montana. After graduating from college, he returned home to coach girl's basketball from 1975 to 1978 where he compiled a record of 38-24.

His brother, Doug Selvig, was a four-year letterman for the Grizzly basketball team in the early 80's as was his sister Sandy (Sullivan).

Robin and his wife, Janie have two sons, Jeff 8, and Dan 5.

Assistant Coach Annette Whitaker-Rocheleau

Annette Whitaker-Rocheleau starts her ninth season as an assistant coach with the Lady Griz basketball program. She was the Montana junior varsity coach for each of her first two seasons with the program and now assists head coach Robin Selvig in all coaching duties. Those duties include game strategy, recruiting, conditioning and scouting.

Prior to joining the coaching ranks, Whitaker-Rocheleau was a two-year starter at point guard for the Lady Griz and is among the top 20 all-time career scorers with 322 points.

She was a basketball standout at Cashmere High School in Cashmere, Washington from 1974 to 1977. In addition to basketball, she also earned four varsity letters in tennis.

Whitaker-Rocheleau transferred to UM from Wenatchee Valley College in Wenatchee, Washington where she was captain of her team in 1978-79.

She graduated from UM in 1982 with a bachelor's degree in Health and Physical Education.

Prior to her appointment as assistant coach, she was a graduate assistant to Selvig for two years.

In June of 1989, Annette married Kevin Rocheleau.



Student Assistant Coach Marti Leibenguth



After playing professional basketball for a year in Roquebrune Cap Martin, France, Marti Leibenguth (Lie-Ben-Gooth) returns home to start her first season as student coach for the Lady Griz.

One of the most consistent performers in Lady Griz history, Leibenguth holds four season records at Montana. She holds the records of most points (499), the highest scoring average (16.6), and most field goals (198), all accomplished in 1987-88. In 1985-86 she set a school record for the highest field goal percentage at 57.2 percent.

Leibenguth is also second on the all-time scoring list with 1,360 points. In addition, she is third in rebounding with 795 rebounds.

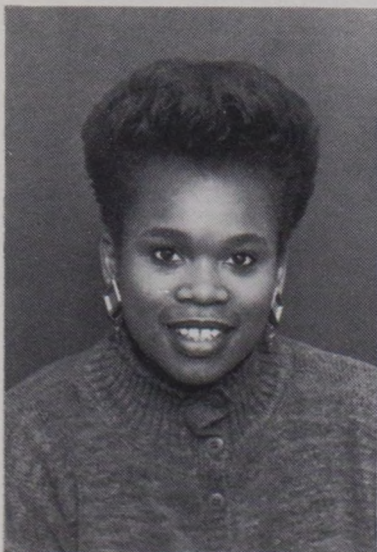
Leibenguth was named Lady Griz MVP as a sophomore and a senior. She received the Grace Geil/Most Improved Player Award as a sophomore. As a junior she received the Theresa Rhoads Coaches' Award, and was named the Domino's Pizza Woman Athlete of the Year.

She also competed in track and field for three years at UM, and holds the javelin record (160-1) which she set in 1985.

She was recruited by UM from UM Missoula's Big Sky High School.

Leibenguth will graduate this spring with a degree in math education.

Seniors



23 VICKI AUSTIN
5-7 Guard
East Moline, Illinois

A 5-7 senior transfer from national powerhouse Long Beach State, Vicki Austin started all 31 games last season averaging 28.0 minutes per game. At point guard she was the team's No. 2 scorer last season with an average of 10.6 points per game. She made 140 field goals of 271 attempts for a field goal percentage of 51.7 percent.

At United Township High School in East Moline, Austin was all-state, all-conference, honorable mention All-American and team MVP as a senior. Her high school team won the Western Big 6 Conference title her senior year.

Last season she was second team all-conference selection and the Big Sky Tournament MVP. Austin was once chosen as the Big Sky Conference Player of the Week, a member of the McCall Pattern Classic All-Tournament Team (held at Kansas State University), and a member of the Domino's Pizza Classic All-Tournament Team.

She was the winner of the Grace Geil/Most Improved Player Award and was named the league's Top Newcomer.

Austin transferred to UM at the suggestion of Long Beach State head coach Joan Bonvicini. At Long Beach, Austin saw little playing time due to the elite teammates who played for Long Beach.

"I think Vicki was one of the keys to us having such a good season last year," said Selvig. "She's a very smart point guard and she scored well. I feel good about our leadership with Vicki back at the point."

FAVORITES

Favorite Food: Chili
Favorite Movie: Invitation of Love
Favorite Actor: Eddie Murphy
Favorite Actress: Sigourney Weaver
Favorite Male Singer: Michael Jackson
Favorite Female Singer: Aretha Franklin
Favorite Music: Rand B
Favorite Song: Playing to Win
Favorite Athlete: Michael Jordan
Favorite NBA Team: Chicago Bulls
Birthdate: 6-27-67
Birthplace: Moline, IL
Hobbies: Basketball
Major: Sociology
Parents: Iesther Austin

		—TOTAL—		—3 PT—						OFF	DEF	TOT							
Year	G/GS	FG/FGA	FG%	FG/FGA	FG%	FT/FTA	FT%	PTS	AVG	REB	REB	REB	AVG	PF/D	AST	TO	BLK	STL	MIN
1988-89	31/31	140/271	.517	0/0	.000	48/68	.706	328	10.6	12	65	77	2.5	43/1	119	74	10	46	869
Totals	31/31	140/271	.517	0/0	.000	48/68	.706	328	10.6	12	65	77	2.5	43/1	119	74	10	46	869

Seniors



53 KRIS HAASL
6-3 Center
Florence, Montana

Kris Haasl (Haw-Sull) has been one of the team's top reserves for the past two seasons. Both Haasl and fellow senior Linda Mendel provide strong backup at the center position.

Haasl averaged 3.4 points per game last season along with 3.7 rebounds per game. She finished 3rd in the conference in blocked shots with 1.4 per game despite only averaging 12.7 minutes.

Against Nevada-Reno last season, Haasl had a career high of 10 rebounds. She also had a career high of 12 points against Rocky Mountain College.

At Florence High School Haasl lettered four years in basketball and two years in track. She was a three-time all-conference selection and a two-time all-state selection. As a senior, she was an all-star selection and team MVP.

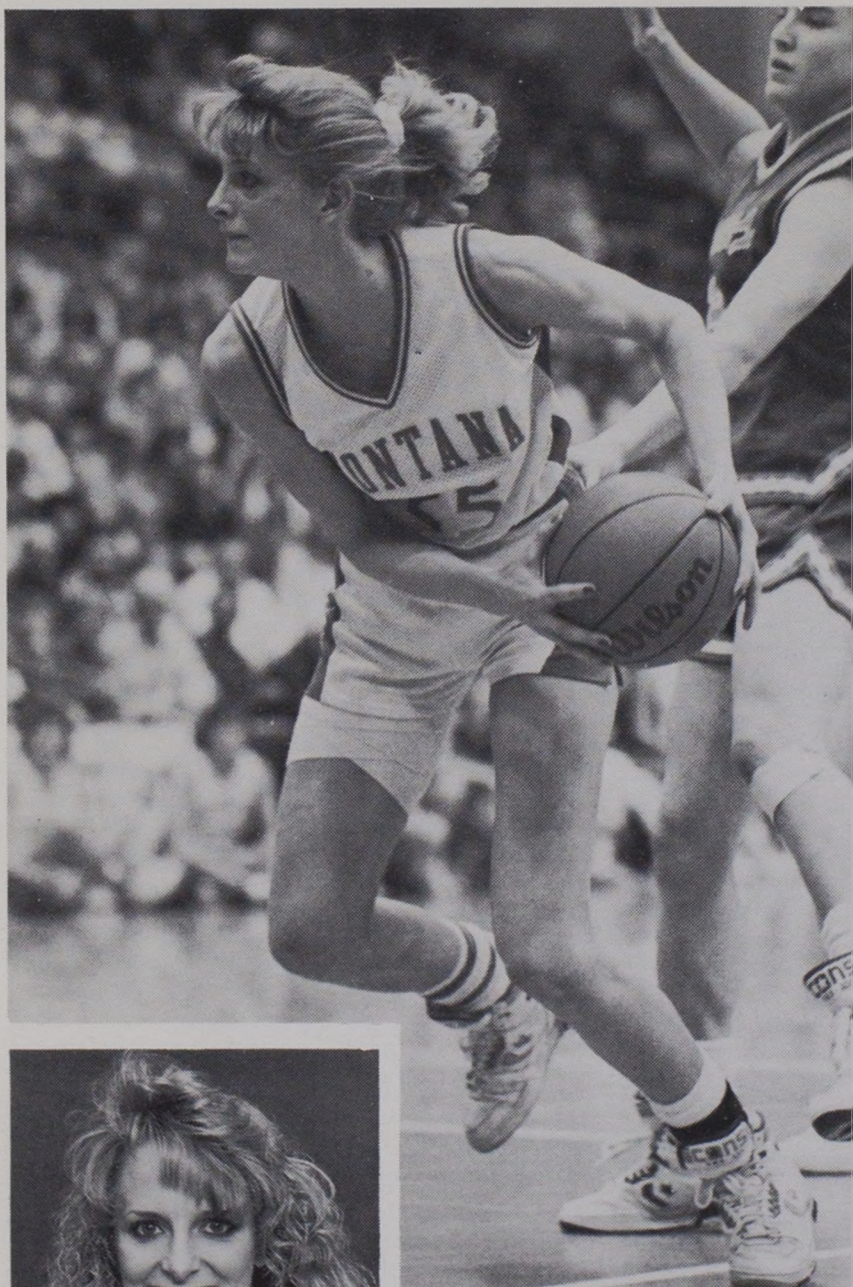
"Kris has done a good job in a reserve role and she'll be looking at a lot more playing time this season," said Selvig. "She's a good defender and rebounder and we'll be looking for increased scoring from Kris."

FAVORITES

Favorite Food: Hoagieville Fries
Favorite Movie: Robocop
Favorite Actor: Mel Gibson
Favorite Actress: Bette Midler
Favorite Male Singer: Randy Travis
Favorite Female Singer: Cher
Favorite Music: Rock, Country
Favorite Song: Wind Beneath My Wings
Favorite Athlete: Michael Jordan
Favorite NBA Team: Chicago Bulls
Birthdate: 8-15-67
Birthplace: Waukesha, WI
Hobbies: Photography, Sewing, Cooking
Major: Pre-Nursing
Parents: Ken & Jan Weber

	—TOTAL—			—3 PT—			OFF DEF TOT												
Year	G/GS	FG/FGA	FG%	FG/FGA	FG%	FT/FTA	FT%	PTS	AVG	REB	REB	REB	AVG	PF/D	AST	TO	BLK	STL	MIN
1986-87	22/0	9/35	.257	0/0	.000	8/20	.400	26	1.2	0	41	41	1.9	30/0	2	15	5	4	187
1987-88	27/0	24/58	.414	0/0	.000	15/34	.441	63	2.3	35	42	77	2.9	46/0	6	23	19	10	263
1988-89	29/0	32/83	.386	0/0	.000	25/42	.595	89	3.1	38	69	107	3.7	56/1	11	34	40	11	369
Totals	78/0	65/176	.369	0/0	.000	48/96	.500	178	2.3	73	152	225	2.9	132/1	19	72	64	25	819

Seniors



25 JEAN McNULTY
6-0 Forward
Whitehall, Montana

Favorite Food: Hoagieville
Favorite Movie: Fletch
Favorite Actor: Chevy Chase
Favorite Actress: Kelly McGillis
Favorite Male Singer: Elton John

An explosive scorer and strong rebounder, Jean McNulty started every game last season. A first team all-conference selection, McNulty is UM's leading returning scorer and rebounder.

Last season McNulty averaged 13.7 points and 5.8 rebounds per game. She shot 52.9 percent from the field and 73.7 percent from the free throw line. She had a career high of 28 points against Montana State in Bozeman last season and 13 rebounds against Weber State in Ogden, Utah.

McNulty is currently 13th in career scoring at UM with 736 points, and 14th in career rebounding with 380 rebounds.

As a junior McNulty received the Theresa Rhoads award which is given to a player who is chosen by her teammates as the player who best exemplifies Lady Griz basketball. She was named to the GTE District VII all-academic team maintaining a 3.23 grade point average in pre-med/zoology.

In her sophomore year McNulty received the Grace Geil/Most Improved Player Award. Also that year she received KPAX-TV's Golden Grizzly Award for her outstanding performance in the Domino's Pizza Classic.

In high school McNulty lettered in basketball and track. She was an all-conference selection for four years, an all-state selection for three years, and team MVP as a sophomore. She scored 1,762 points in her prep career—the second highest total in Montana high school history (behind Lady Griz teammate Marti Kinzler). She was an all-state track selection for three years and the state champion in the high jump three times.

McNulty is also a member of the Lady Griz track team and a co-holder of the school record in the high jump (5-8).

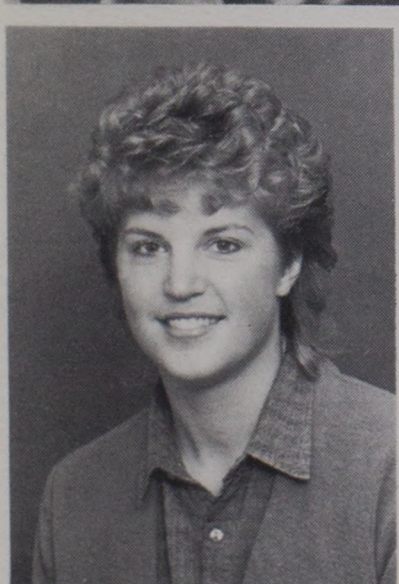
"Jean had a great junior year," said Selvig. "She shot for a great percentage. She's our most experienced inside player and we'll be looking for a lot of leadership from her."

FAVORITES

Favorite Female Singer: Melissa Ethridge/Cher
Favorite Music: Mellow Rock
Favorite Song: Your Song by Elton John
Favorite Athlete: Larry Bird/Bo Jackson
Favorite NBA Team: Boston Celtics
Birthdate: 1-27-67
Birthplace: Missoula, MT
Hobbies: Sports, Art, Music
Major: Biology/Pre-Med
Parents: Bill & Peggy McNulty

Year	—TOTAL—			—3 PT—						OFF DEF TOT									MIN
	G/GS	FG/FGA	FG%	FG/FGA	FG%	FT/FTA	FT%	PTS	AVG	REB	REB	REB	AVG	PF/D	AST	TO	BLK	STL	
1985-86	20/0	9/30	.300	0/0	.000	11/16	.688	29	1.5	0	35	35	1.8	14/0	4	12	3	1	120
1986-87	31/0	110/243	.453	0/0	.000	61/93	.656	281	9.1	0	166	166	5.4	66/1	13	32	28	32	281
1988-89	31/31	176/333	.529	4/12	.333	70/95	.737	426	13.7	72	107	179	5.8	68/1	36	41	20	47	841
Totals	82/31	295/606	.487	4/12	.333	142/204	.696	738	9.0	72	308	380	4.6	148/2	53	85	51	80	1242

Seniors



35 LINDA MENDEL
6-1 Center
Malta, Montana

Linda Mendel (Men-Dell) has shared the back-up center duties with Kris Haasl for the past two seasons and will be battling for a starting spot this year. She averaged 1.5 points and 2.7 rebounds in 1988-89.

In her second year at UM Mendel was red-shirted.

Mendel was a three-time first team all-conference pick and a two-time first team all-state choice. She averaged 16.2 points and 14 rebounds in leading Malta High to a 24-3 record and a third place finish in the state Class "B" ranks her senior year.

She was also a track star in high school earning the MVP of the girls' track team her senior year.

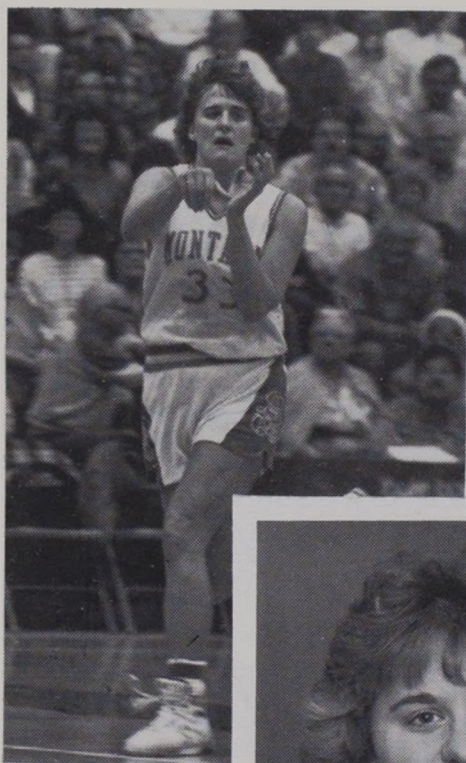
"Linda has done a nice job as a backup and she should see a lot more playing time this year," said Selvig. "She's a good defender and with increased playing time, I think she'll improve her offensive abilities."

FAVORITES

Favorite Food: German Chocolate Cake
Favorite Movie: Somewhere In Time
Favorite Actor: Tom Hanks
Favorite Actress: No real favorite
Favorite Male Singer: Lee Greenwood
Favorite Female Singer: Whitney Houston
Favorite Music: Soft Rock, Country
Favorite Song: No real favorite
Favorite Athlete: Florence Griffith Joyner
Favorite NBA Team: L.A. Lakers
Birthdate: 8-26-67
Birthplace: Malta, MT
Hobbies: Cross-stitching, Sewing, Cooking
Major: HPE, Athletic Training
Parents: Eugene & Elaine Mendel

Year	—TOTAL—			—3 PT—			FT/FTA	FT%	PTS	AVG	OFF DEF TOT			PF/D	AST	TO	BLK	STL	MIN
	G/GS	FG/FGA	FG%	FG/FGA	FG%						REB	REB	REB						
1985-86	20/0	6/18	.333	0/0	.000	5/12	.417	17	.9	0	22	22	1.1	8/0	2	6	1	1	90
1987-88	28/0	26/52	.500	0/0	.000	14/23	.609	66	2.4	21	39	60	2.1	23/0	3	18	8	1	245
1988-89	30/0	19/61	.312	0/0	.000	7/20	.350	45	1.5	30	51	81	2.7	32/0	5	25	13	7	319
Totals	78/0	51/131	.389	0/0	.000	26/55	.473	128	1.6	51	112	163	2.1	63/0	10	49	22	9	654

Juniors



33 MARTI KINZLER

5-11 Guard/Forward
Fairview, Montana

The first player off the bench last season, Marti Kinzler is the projected starter at off guard. Playing in all 31 games last season, she averaged 4.0 points, 3.6 rebounds, and 2.0 assists, and had a game high six rebounds against Gonzaga.

She is a strong rebounder, especially on the offensive boards with 51 of her 110 rebounds coming on the offensive end. She is a versatile player who can also play small forward.

Kinzler was a redshirt her first year at UM in 1986-87.

At Fairview High School Kinzler was an all-conference and all-state selection for four years. She was the MVP of the Class "B" State Tournament in 1984 and 1985. She led her team to a state championship her junior year and a second place finish her senior year. She was a Converse All-American honorable mention in 1985-86.

Kinzler holds the Montana state career scoring record with 2,053 points. In 1986 Kinzler's jersey number (42) at Fairview High was retired.

"Marti has done a good job as a reserve the past two years and she's our projected starter at the 'two' guard," said Selvig. "She will also see time at the 'three'. I think she was our best guard defender at guard last year. She is also a good scorer and I think she'll have more of a scoring role in the future."



FAVORITES

Favorite Food: Chinese
Favorite Movie: Rain Man
Favorite Actor: Kevin Costner
Favorite Actress: Debra Winger
Favorite Athlete: Michael Jordan
Favorite NBA Team: Chicago Bulls
Birthdate: 8-22-68
Parents: Gordon & Luella Kinzler

Favorite Male Singer: Bob Seger
Favorite Female Singer: K.T. Oslin
Favorite Music: Country, Rock
Favorite Song: Old Time Rock n' Roll
Hobbies: Hunting, Fishing, Biking, Hiking
Major: Social Work
Birthplace: Sidney, MT

41 TERRE TRACY

6-0 Forward
Great Falls, Montana

Terre Tracy will be contending for playing time at small forward. She played in 25 games last season.

She led the team in scoring and rebounding with 15 points and 10 rebounds against Nevada-Reno last season. She had a season total of 47 rebounds averaging 1.9 rebounds per game.

Tracy lettered in basketball for three years at C.M. Russell High School in Great Falls. She was twice an all-conference selection and a two-time all-state selection. She led her team to the state Class "AA" championship her senior year and was named MVP that year.

She represented the East in the All-Star game and was chosen the MVP when the Eastern Division won the championship. She was CMR's defensive player of the year in 1985 and was the team's leading scorer and rebounder in 1986.

Tracy also lettered two years in volleyball and was chosen the MVP her senior year in that sport.

"Terre will be in the battle for playing time," said Selvig. "She's a good defender and she had some good moments in terms of scoring and rebounding."

FAVORITES

Favorite Food: Tacos
Favorite Movie: Dirty Dancing
Favorite Actor: Mel Gibson
Favorite Actress: Kathleen Turner
Favorite Athlete: Michael Jordan
Favorite NBA Team: Chicago Bulls
Birthdate: 11-9-68
Parents: Pat & Patti Tracy

Favorite Male Singer: Richard Marx
Favorite Female Singer: Tiffany
Favorite Music: Rock
Favorite Song: You've Got the Look
Hobbies: Skiing, Golf
Major: Physical Therapy
Birthplace: Great Falls, MT



Sophomores

45 MARIETTA BAHNMILLER

6-0 Forward
Big Sandy, Montana

Marietta BahnMiller will be in the battle for the backup power forward position this season. As a freshman she averaged 1.6 points and 1.3 rebounds per game.

BahnMiller redshirted her first season with the Lady Griz.

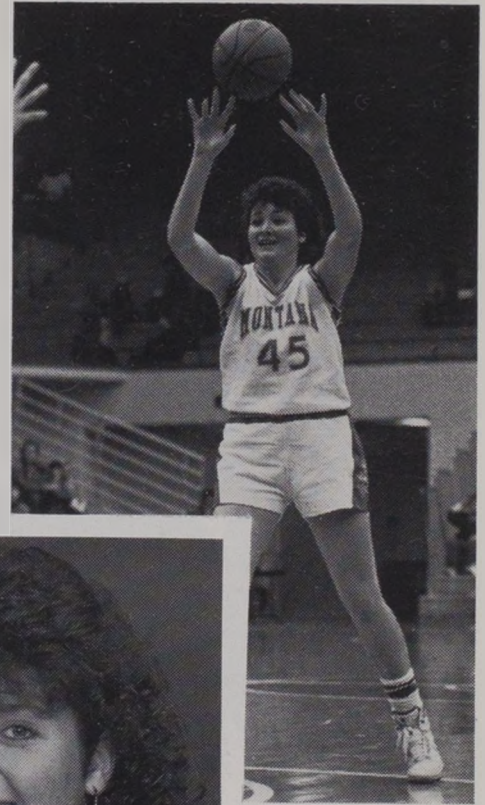
At Big Sandy High School she averaged 24 points and 14 rebounds a game as a senior on the only undefeated team in the state of Montana that year. Her senior year she led Big Sandy to a 27-0 record and the state Class "C" title.

BahnMiller set a Class "C" record as a senior, scoring 58 points in three quarters against Rocky Boy. She was a four-time all-conference selection, a three-time all-state selection, and an honorable mention Converse High School All-American her senior year. She was chosen her team's MVP for three consecutive seasons.

Among some of the awards BahnMiller received in high school were: Most Inspirational award, best free throw percentage, and most rebounds.

She also lettered three years in track and was named Most Improved. Twice in volleyball she was chosen MVP.

"Marietta has good offensive abilities," said Selvig. "She has the ability to score away from the basket, as well as underneath."



FAVORITES

Favorite Food: Ham & Cheese Sand
Favorite Movie: Man from Snowy
River I & II
Favorite Actor: Dustin Hoffman
Favorite Actress: Bette Midler
Favorite Athlete: Michael Jordan
Favorite NBA Team: L.A. Lakers
Parents: Paul & Jewell BahnMiller

Favorite Male Singer: Bob Seger
Favorite Female Singer: Stevie Nicks
Favorite Music: Country, Rock
Favorite Song: Wind Beneath My Wings
Hobbies: Hiking, Biking
Major: Business Education
Birthplace: Fort Benton, MT
Birthdate: 12-16-68



21 SHANNON CATE

6-½ Guard/Forward
Billings, Montana

The highest scoring freshman in UM history, Shannon Cate averaged 10.1 points, 4.8 rebounds and 3.3 assists last season. She started 29 of 31 games and had a game high of 23 points against Gonzaga University.

Cate was the Big Sky Conference co-Outstanding Freshman of the Year, and set a school record by hitting 37 three-pointers. Her season total of 312 points and her career high of 23 points are both UM freshman records. Cate was also an honorable mention all-conference selection.

Cate was selected to the 12-member "West" squad for the 1989 U.S. Olympic Festival held in July in Oklahoma City, Oklahoma.

At Billings Central High School Cate led her team to three straight Class "A" state titles and was the MVP of the state tournament all three years.

Cate was four-times an all-conference and all-state pick. She was selected a Converse and Street & Smith All-American and was chosen as both the Gatorade and USA Today Girls' Basketball Player of the Year in Montana.

"Shannon had a really nice freshman year," said Selvig. "She scored well and improved steadily in terms of rebounding and defense. With the experience she's gained, I am expecting a solid and consistent year from her."

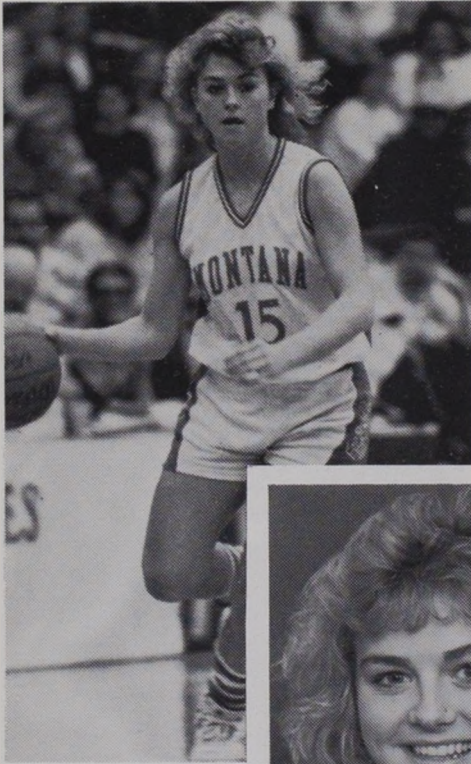
FAVORITES

Favorite Food: Pizza
Favorite Movie: No Way Out
Favorite Actor: Kevin Costner
Favorite Actress: Meryl Streep
Favorite Athlete: Michael Jordan
Favorite NBA Team: Chicago Bulls
Birthdate: 8-3-70
Parents: Jerome & Mary Kay Cate

Favorite Male Singer: Elton John
Favorite Female Singer: Paula Abdul
Favorite Music: Rhythm & Blues
Favorite Song: Hotel California
Hobbies: Volleyball, Music, Rafting
Major: General Studies
Birthplace: Billings, MT



Sophomores



**15 JULIE
EPPERLY**

**5-6 Guard
Kalispell, Montana**

Julie Epperly will be vying for time at the point guard position this season. She played in 26 of 31 games last season and averaged 2.1 points a game and had 101 assists.

Epperly was a three-sport standout at Flathead High School in Kalispell. She was a two-time all-conference selection in basketball. In 1987-88 (her senior year) she was an all-state pick and team MVP, averaging 17.5 points per game.

In addition to basketball, Epperly lettered in track for four years and volleyball for two. She was an all-state selection in track and in volleyball. She was the volleyball team MVP both years she played that sport.

"Julie is going to be in the thick of the race for the backup guard spot," said Selvig. "She did a good job in a limited role last season and she proved that she can play at this level."



FAVORITES

Favorite Food: Pizza
Favorite Movie: Lethal Weapon II
Favorite Actor: Kevin Costner
Favorite Actress: Bette Midler
Favorite Athlete: Michael Jordan
Favorite NBA Team: L.A. Lakers
Birthdate: 12-31-69
Parents: Bill & Kay Epperly

Favorite Male Singer: Steve Perry
Favorite Female Singer: Whitney Houston
Favorite Music: Country, Soft Rock
Favorite Song: Faithfully
Hobbies: Biking, Running, Fishing,
Reading, Playing Cards
Major: Physical Therapy
Birthplace: Kalispell, MT

**11 COLLEEN
McNALLY**

**5-5 Guard
Ovando, Montana**

Last season Colleen McNally played 11 games and was then sidelined with a knee injury. Midway through the season in a home game against Montana State McNally twisted her right knee and eventually had complete reconstructive surgery to repair her anterior ligaments. She spent eight weeks in a brace and on crutches, and underwent six months of therapy. This season her health will be in question since she has only been playing basketball since the end of August.

In 11 games last season, McNally had 123 Points, 3.6 rebounds, and 63 assists per game.

In her sophomore year she made 75 percent (15 of 20) from the free throw line and was one for one in three pointers.

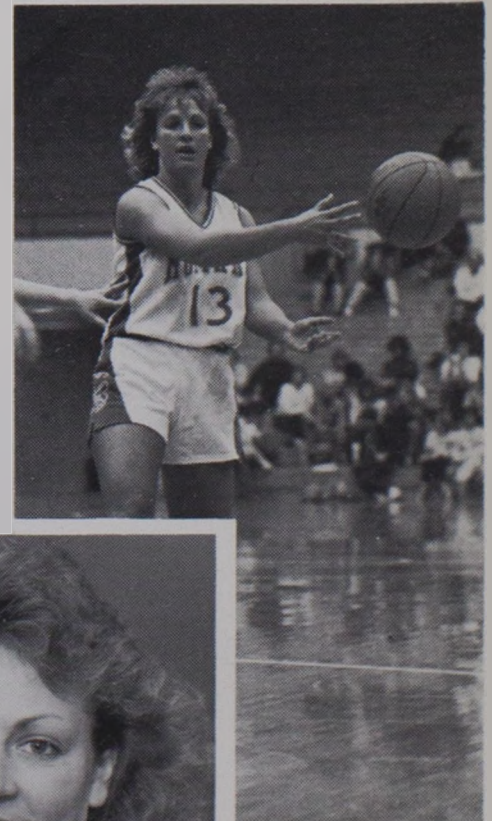
At Seeley-Swan High School near Ovando, McNally was a four-year starter in basketball. She was a four-time all-conference selection and a two-time all-state selection. She was a West representative in the annual All-Star Series and a USA Today All-American as a senior. She also lettered three years on track teams that won three conference championships.

"The question with Colleen is how she'll come back from the knee surgery," said Selvig. "She's a good playmaker and ballhandler and should be in the battle for playing time at point guard."

FAVORITES

Favorite Food: Hoagieville's
Super Chick
Favorite Movie: Big
Favorite Actor: Tom Hanks
Favorite Actress: Kelly McGillis
Favorite Athlete: Magic Johnson
Favorite NBA Team: L.A. Lakers
Parents: Wayne & Eloise McNally

Favorite Male Singer: Bon Jovi
Favorite Female Singer: Cher
Favorite Music: Rock
Favorite Song: Turn Back Time by Cher
Hobbies: Sports, 4 Wheelin'
Major: HPE
Birthdate: 12-16-68
Birthplace: Missoula, MT



Freshmen

12 JOY ANDERSON

5-11 Guard
Hutchinson, Minnesota

Joy Anderson will play the guard position for the Lady Griz this season.

As a senior at Hutchinson High School she averaged 18 points, 8 rebounds and 7 assists per game. She shot 45 percent from the field.

Anderson was an all-conference and all-state selection her senior year, and played in the Minnesota All-Star game.

She holds her school's single-season record for points with 440, assists with 216, and steals with 190. During her prep career she had 1,113 points, 523 steals, and 505 assists in four years.

Her team took 3rd place in the state "AA" tournament with a record of 27-2.

Anderson played AAU basketball and her team won the state tournament in 1988.

"Joy has good lead guard skills, can shoot the ball and has good athletic ability," said Selvig. "She has good size for a point guard. She passes well and has good court vision. She has all the ingredients to be an outstanding guard at this level, and she will be in the hunt for playing time."



FAVORITES

Favorite Food: Pizza
Favorite Movie: Beaches
Favorite Actor: Robert Redford
Favorite Actress: Barbara Hershey
Favorite Athlete: Michael Jordan
Favorite NBA Team: Minnesota Timberwolves
Parents: Mark & Heather Anderson

Favorite Male Singer: U2
Favorite Female Singer: Belinda Carlisle
Favorite Music: Rock
Favorite Song: Dream Attack
Hobbies: Many
Major: Undecided
Birthplace: Minneapolis, MN
Birthdate: 11-6-70

43 ANN LAKE

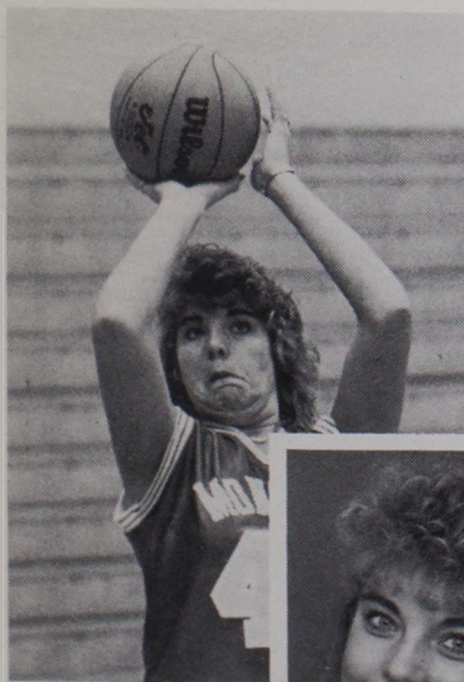
6-0 Forward
Missoula, Montana

Ann Lake is a hometown product from Big Sky High School. As a senior she averaged 16 points and 10 rebounds a game as she and fellow Lady Griz freshman Patricia Olson led Big Sky High to its second-straight Class "AA" championship.

She was a first team all-state and all-tournament selection, and a nominee for Converse All-American. She was named the Montana Naismith Girls' Player of the Year, as well as the Gatorade Girls' Basketball Player of the Year.

As a junior Lake was a first team all-stater and MVP of the state tournament. She was a second team all-state selection as a sophomore.

"Besides having outstanding athletic ability, Ann is an extremely aggressive player," Selvig said. "She is strong and has good quickness and her greatest strength is probably her rebounding ability. She is a kid who gives 100 percent all of the time. As a coach, you have to love that."

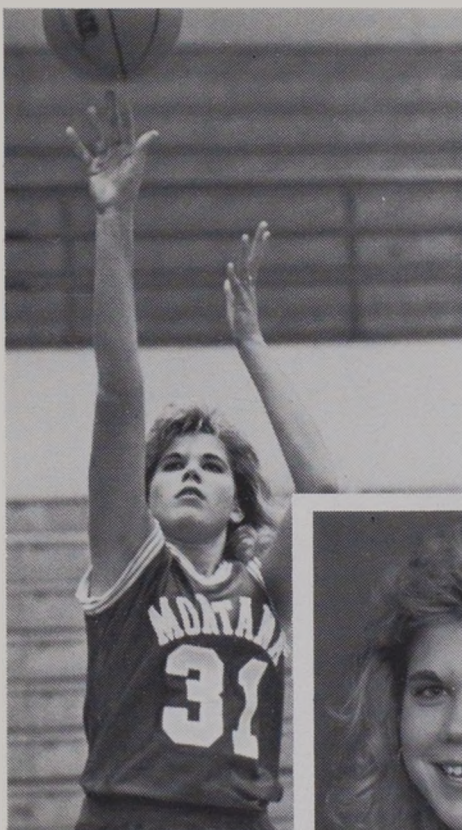


FAVORITES

Favorite Food: Pizza, Tacos
Favorite Movie: Top Gun
Favorite Actor: Tom Cruise
Favorite Actress: Kelly McGillis
Favorite Athlete: Larry Bird
Favorite NBA Team: Boston Celtics
Birthdate: 2-18-71
Parents: George & Joy Lake

Favorite Male Singer: Dan Seals
Favorite Female Singer: Joan Jett
Favorite Music: Country, Rock
Favorite Song: Heaven
Hobbies: Snow/water skiing, Horseback riding
Major: Business Management
Birthplace: Missoula, MT

Freshmen



31 PATRICIA
OLSON

6-1 Forward
Missoula, Montana

Another Big Sky High School product, Patricia Olson will play forward for the Lady Griz. In high school she averaged 12 points and 5.5 rebounds per game her senior year.

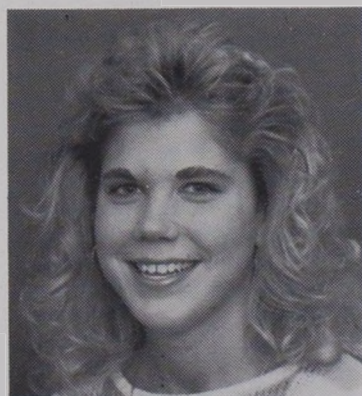
Olson helped lead Big Sky High to its second straight Class "AA" state title in 1988-89. She scored 19 points in the championship game against Flathead High School in Kalispell.

She led the team in blocked shots with 56.

Olson was an all-conference and second team all-state selection.

She also earned all-state honors in volleyball.

"Pat has tremendous potential," said Selvig. "We know her very well from camps and are excited about her future as a Lady Griz. She's good around the basket and has pretty good perimeter skills. She is an outstanding student and will be a tremendous addition to the school, both academically and athletically."



FAVORITES

Favorite Food: Pizza
Favorite Movie: Lethal Weapon II
Favorite Actor: Mel Gibson
Favorite Actress: Cher
Favorite Athlete: Michael Jordan
Favorite NBA Team: Chicago Bulls
Birthdate: 5-8-71
Parents: Margaret & Harvey Olson

Favorite Male Singer: Journey
Favorite Female Singer: Whitney Houston
Favorite Music: Rock
Favorite Song: One Moment in Time
Hobbies: Snow/water skiing, biking
Major: General Studies
Birthplace: Miles City, MT

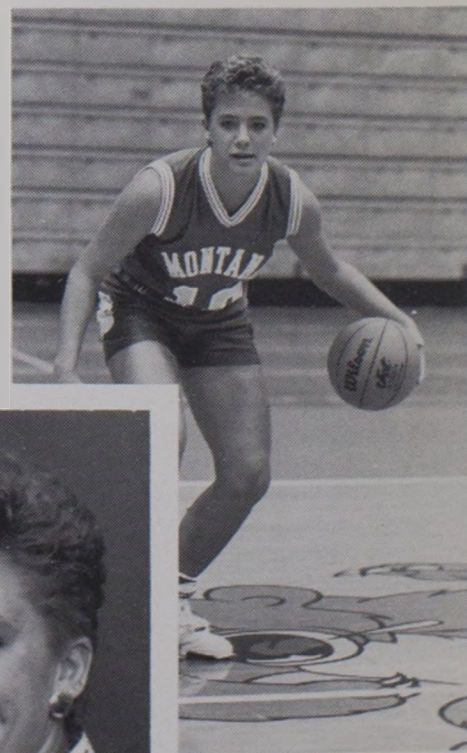
10 KRISTIN
OMLID

5-9 Guard
Stevensville, Montana

As a junior at Stevensville High School Kristin Omlid averaged 15.3 points, 5.0 rebounds and 3.0 assists per game. Omlid was sidelined her senior year as a result of torn ligaments in her left knee. She had total reconstructive surgery that left her in a brace for six weeks and has been in therapy ever since.

She was twice an all-conference and an all-state selection in both basketball and volleyball, and she was the team's MVP in basketball her junior year. She was also the MVP of volleyball and track her senior year.

"Kristin is another girl we know very well from camps," Selvig said. "She is a very athletic guard and a good shooter with outstanding athletic ability. We'll have to see how she comes back from the knee injury, but so far she seems to be doing really well."



FAVORITES

Favorite Food: Chicken sandwiches
Favorite Movie: Trains, Planes & Automobiles
Favorite Actor: Danny Devito
Favorite Actress: Bette Midler
Favorite Athlete: Larry Bird
Favorite NBA Team: Boston Celtics
Parents: Orlin & Carol Omlid

Favorite Male Singer: Billy Squire
Favorite Female Singer: Joan Jett
Favorite Music: Rock
Favorite Song: Old Time Rock 'N' Roll
Hobbies: Listening to music, Biking
Major: Physical Therapy
Birthplace: Great Falls, MT
Birthdate: 1-29-71

Freshmen

55 KIM VENIK

6-4 Center
Colorado Springs, Colorado

UM's only out-of-state recruit, Kim Venik is the tallest player ever to play for the Lady Griz.

At Doherty High School in Colorado Springs, Venik averaged 14.3 points and 9.7 rebounds per game. She shot 53 percent from the field and 78 percent from the free throw line.

She led her team to the final four of the State "4-A" Tournament, but they lost to the eventual state champion in the semifinals. She earned all-city and all-conference honors as a junior and senior.

"Kim is very good around the basket and has a good shooting touch," said Selvig. "She has good hands, is a hard worker and a good student. I am excited about the kind of player she could develop into. I can't wait to get her into the program — I think she has lots of potential."



FAVORITES

Favorite Food: McDonald's Food
Favorite Movie: One Flew Over the Cuckoo's Nest
Favorite Actor: William Hurt
Favorite Actress: Kelly McGillis
Favorite Athlete: Tom Chambers
Favorite NBA Team: Denver Nuggets
Parents: Harry & Sharon Venik

Favorite Male Singer: Van Halen
Favorite Female Singer: None
Favorite Music: Reggae
Favorite Song: I Need You to Turn To
Hobbies: Reading, Music
Major: Pre-Law
Birthplace: Cedar Falls, IA
Birthdate: 10-17-71

FINAL

Basketball Statistics — Montana Lady Griz 1988-89 (Includes 31 Games)

Player	G/GS	—TOTAL—		—3 PT—		FT/FTA	FT%	PTS	AVG	OFF	DEF	TOT	AVG	PF/D	AST	TO	BLK	STL	MIN
		FG/FGA	FG%	FG/FGA	FG%					REB	REB	REB							
Lisa McLeod	31/31	175/358	.489	0/0	.000	92/138	.667	442	14.3	95	153	248	8.0	81/5	58	77	63	79	812
Jean McNulty	31/31	176/333	.529	4/12	.333	70/95	.737	426	13.7	72	107	179	5.8	68/1	36	41	20	47	841
Vicki Austin	31/31	140/271	.517	0/0	.000	48/68	.706	328	10.6	12	65	77	2.5	43/1	119	74	10	46	869
Shannon Cate	31/29	118/274	.431	37/85	.435	39/50	.780	312	10.1	35	114	149	4.8	51/0	101	59	23	32	830
Cheryl Brandell	31/31	116/257	.451	1/8	.125	48/63	.762	281	9.1	26	65	91	2.9	46/0	127	69	17	54	910
Marti Kinzler	31/2	50/110	.455	0/4	.000	23/36	.639	123	4.0	51	59	110	3.6	47/0	63	55	7	24	601
Kris Haasl	29/0	32/83	.386	0/0	.000	25/42	.595	89	3.1	38	69	107	3.7	56/1	11	34	40	11	369
Julie Epperly	26/0	17/53	.321	1/6	.167	20/9	.690	55	2.1	6	9	15	.6	18/0	9	24	0	5	186
Terre Tracy	25/0	23/69	.333	0/4	.000	6/15	.400	52	2.1	19	28	47	1.9	16/0	7	16	0	9	195
Marietta Bahnmler	22/0	15/46	.326	0/0	.000	4/10	.450	34	1.6	13	16	29	1.3	18/0	6	11	1	1	126
Linda Mendel	30/0	19/61	.312	0/0	.000	7/20	.350	45	1.5	30	51	81	2.7	32/0	5	25	13	7	319
Shelli Sniffin	20/0	5/27	.185	1/4	.250	6/11	.546	17	.9	3	6	9	.5	6/0	10	17	0	1	78
Colleen McNally	11/0	2/7	.286	0/0	.000	3/4	.750	7	.6	3	6	9	.8	5/0	13	10	0	0	64
Team Rebounds												144							
Lady Griz Team Rebounds	31/31	888/1949	.456	44/123	.358	391/581	.673	2211	71.3	403	748	1295	41.8	487/8	565	512	194	316	654
Opponent Totals	31/31	633/1765	.359	66/191	.346	394/560	.704	1726	55.7	331	648	1135	36.6	557/17	406	673	68	213	

1988-89 RESULTS

Game	Opponent	Score	Alt.	Loc.	High Scorer	High Rebounder	Opp. High Scorer	Opp. High Rebounder
1	Eastern Illinois	70-64W	300	N	Cate-18	Cate, McLeod-9	Perkes-27	Mull-13
2	Kansas State	65-66L	796	A	McLeod-18	McNulty-11	Hazle-17	Bahner-8
3	§Pacific	82-49W	1912	H	Cate-15	McLeod, McNulty-6	Szukalski-12	Peterson-7
4	§Nebraska	79-61W	3227	H	McLeod-23	McLeod-16	Stephens-22	Halsne-10
5	Washington	47-80L	2015	A	McLeod-9	McLeod-9	Mickelson-20	Deden-10
6	Portland State	68-58W	160	A	McLeod-15	Mendel-8	Kuntz-18	3 Players-5
7	Portland	70-53W	203	A	Austin, McLeod-14	McLeod-7	Sheldon-11	Young-8
8	Washington State	60-62L	125	A	McLeod-20	McLeod-9	Gray-18	Allinger-8
9	Rocky Mountain	82-23W	1903	H	McNulty, Haasl-12	McNulty-8	Patton-8	Barry-8
10	Utah	69-60W	1856	H	Cate-19	McLeod-7	Smith-20	B. Alcorn-7
11	Gonzaga	74-54W	1362	H	Cate-23	McLeod, Kinzler-6	Curiman, Smith-12	Koppelman-11
12	†Northern Arizona	69-51W	100	A	McNulty-23	McNulty-5	Brungard-14	Kirby-7
13	§Nevada-Reno	69-53W	35	A	Brandell-22	Haasl-10	Pitman, Davidson-11	Davidson-9
14	†Idaho	71-54W	3547	H	McLeod-18	McLeod, Brandell-6	Van Pelt-21	Van Pelt-10
15	†Eastern Wash.	81-47W	2157	H	Austin, McNulty-15	McLeod, Haasl-5	Rupe-14	Chubb, Taucher-8
16	§Boise State	63-59W	1000	A	McLeod-20	3 Players-4	Pfeifer-12	Sullivan, Sievers-8
17	†Weber State	77-66W	284	A	McNulty-25	McNulty-13	Lawler, Weyenb.-16	Weyenberg-14
18	†Idaho State	77-47W	1619	H	McNulty-16	McLeod-12	Iahoff-13	Palmer-10
19	†Montana State	75-47W	4482	H	Brandell-21	McLeod-9	Reno-12	Holz, Neiss-6
20	†Montana State	84-58W	2772	A	McNulty-28	McLeod-7	Holz-29	Holz-8
21	†Eastern Wash.	75-52W	359	A	McNulty, Austin-14	McLeod-11	Jones-10	Hovde-6
22	†Idaho	60-41W	390	A	Cate-13	McLeod-12	Van Pelt-10	Dial-10
23	†Nevada-Reno	81-49W	1477	H	Tracy-15	Tracy-10	Pitman-21	Ensley, Davidson-7
24	†Northern Arizona	74-58W	1591	H	McLeod-20	McLeod-10	Preter-18	Preter-11
25	†Boise State	82-66W	4701	H	McLeod-22	McLeod-11	Pfeifer, Ecklund-12	Heagy, Ward-7
26	†Weber State	72-46W	2648	H	McLeod-16	McLeod-7	Weyenberg-16	Weyenberg-9
27	†Idaho State	60-44W	500	A	Cate-14	Cate-10	Iahoff-11	Palmer-10
28	†Weber State	76-59W	2275	H	McLeod-22	McLeod-11	Knott-10	Alex-8
29	†Idaho	63-49W	3773	H	Austin-18	McLeod-9	Doherty-22	Elkins, Doherty-7
30	°Cal State-Fullerton	82-67W	6074	H	McNulty-22	McNulty-8	Benson-19	Miller-8
31	°Texas	54-83L	9108	A	McNulty-14	McLeod-10	Hall-21	Bayer-10

§ Domino's Pizza Classic

† Big Sky Conference

† Big Sky Tournament

° NCAA Tournament

SEASON HIGHS/LOWS

		Montana Lady Griz	Opponent
Points 1st Half:	High	50 vs Montana State	34 by Northern Arizona
	Low	17 vs Washington	10 by Rocky Mountain
Points 2nd Half:	High	44 vs Cal State-Fullerton	50 by Texas
	Low	22 vs Idaho State	13 by Rocky Mountain
Total Points:	High	84 vs Montana State	83 by Texas
	Low	47 vs Washington	23 by Rocky Mountain
Total Field Goals Made:	High	36 vs Rocky Mountain	32 by Texas
	Low	17 vs Washington	10 by Rocky Mountain
Total Field Goals Attempted:	High	81 vs Rocky Mountain	70 by Cal State-Fullerton
	Low	47 vs Boise State	42 by Idaho
Total FG Percentage:	High	.553 vs Boise State	.542 by Texas
	Low	.304 vs Washington	.233 by Rocky Mountain
3-Pt. Field Goals:	High	5 vs Gonzaga	5 by Cal State-Fullerton
	Low	0 vs Texas	0 by Idaho State
3-Pt. FG Attempted:	High	12 vs Pacific	13 by Cal State-Fullerton
	Low	0 vs Cal State-Fullerton	1 by Idaho State
3-Pt. FG Percentage:	High	1.000 vs Idaho	1.000 by Boise State
	Low	.000 vs Texas	.000 by Idaho State
Free Throws:	High	23 vs Boise State	24 by Eastern Illinois
	Low	4 vs Idaho State	3 by Rocky Mountain
Free Throws Attempted:	High	34 vs Boise State	33 by Nevada-Reno
	Low	5 vs Idaho State	6 by Washington State
Free Throw Percentage:	High	.900 vs Rocky Mountain	1.000 by Washington State
	Low	.435 vs Northern Arizona	.429 by Rocky Mountain
Offensive Rebounds:	High	22 vs Nevada-Reno	24 by Nevada-Reno
	Low	3 vs Boise State	5 by Montana State
Defensive Rebounds:	High	37 vs Idaho State	32 by Idaho State
	Low	11 vs Utah	13 by Eastern Washington
Total Rebounds:	High	59 vs Nevada-Reno	57 by Nevada-Reno
	Low	21 vs Boise State	23 by Washington State
Assists:	High	28 vs Montana State	23 by Washington
	Low	5 vs Northern Arizona	1 by Northern Arizona
Blocked Shots:	High	12 vs Idaho	7 by Gonzaga
	Low	3 vs Boise State	0 by Cal State-Fullerton
Steals:	High	22 vs Rocky Mountain	15 by Kansas State
	Low	4 vs Weber State	2 by Weber State
Turnovers:	High	24 vs Kansas State	36 by Rocky Mountain
	Low	10 vs Northern Arizona	13 by Cal State-Fullerton
Personal Fouls:	High	25 vs Nevada-Reno	27 by Northern Arizona
	Low	8 vs Rocky Mountain	11 by Texas

UNIVERSITY OF MONTANA WOMEN'S BASKETBALL CAREER LEADERS

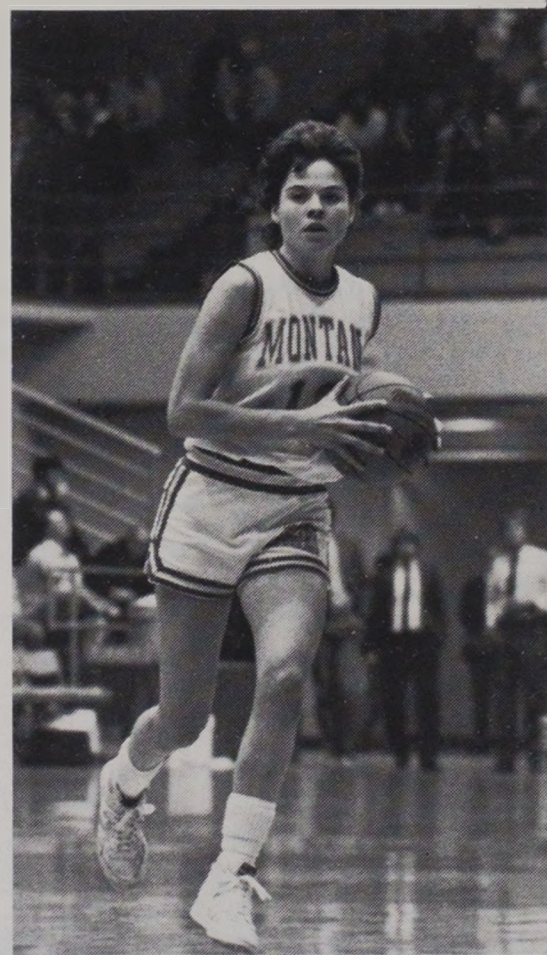
SCORING:

1. Lisa McLeod	1985-89	1470	11. Linda Deden Smith	1976-80	813
2. Marti Leibenguth	1984-88	1360	12. Juli Eckman	1979-83	799
3. Doris Deden Hasquet	1980-84	1248	13. Jean McNulty	1985-	736
4. Cheri Bratt	1980-84	1196	14. Margaret Williams	1982-87	713
5. Anita Novak	1981-85	1158	15. Kris Moede	1984-88	709
6. Sharla Muralt	1982-86	1157	16. Natalie Chamberlain	1983-87	676
7. Dawn Silliker	1984-88	1088	17. Sandy Selvig	1978-81	615
8. Barb Kavanagh	1981-85	1013	18. Cheryl Sandbak	1975-79	591
9. Cheryl Brandell	1984-89	980	19. Janet Ruetten	1979-81	571
10. Jill Greenfield	1979-81	933	20. Sheila Sullivan	1975-79	531

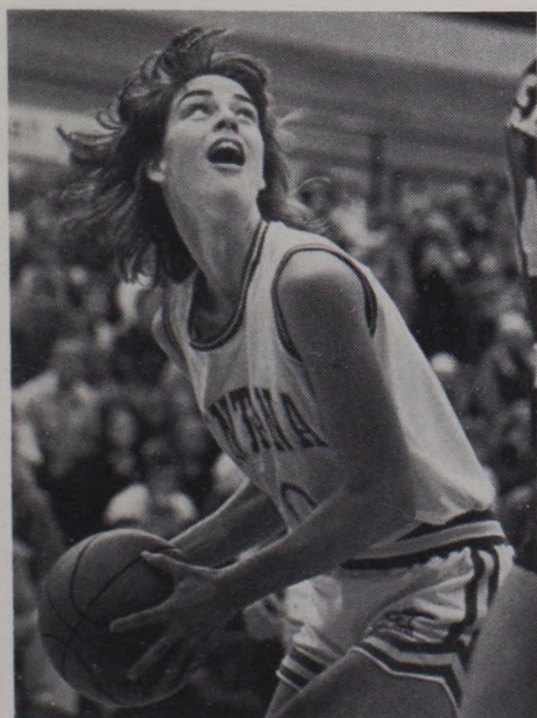
Bold Face indicates current players



Marti Leibenguth receiving the game ball from Interim Athletic Director Kathy Noble when she broke the all-time scoring record in 1987-88. Lisa McLeod now holds the record.



Margaret Williams . . . Career leader in assists (1982-1987).



Doris Deden Hasquet . . . career leader in rebounding (1980-1984).

REBOUNDING:

1. Doris Deden Hasquet	1980-84	856	11. Candie Stevens	1976-80	474
2. Lisa McLeod	1985-89	830	12. Shari Thesenvitz	1980-83	439
3. Marti Leibenguth	1984-88	795	13. Cheryl Brandell	1984-89	432
4. Anita Novak	1981-85	791	14. Jean McNulty	1985-	380
5. Sharla Muralt	1982-85	729	15. Juli Eckmann	1979-83	295
6. Dawn Silliker	1984-88	667	16. Sheila Sullivan	1975-79	283
7. Cheri Bratt	1980-84	657	17. Kris Moede	1984-88	261
8. Linda Deden Smith	1976-80	626	18. Barb Kavanagh	1981-85	249
9. Jill Greenfield	1979-81	570	19. Janet Ruetten	1979-81	245
10. Sandy Selvig	1978-81	515	20. Cheryl Sandbak	1975-79	241

ASSISTS:

1. Margaret Williams	1982-87	511	4. Barb Kavanagh	1982-85	378
2. Cheri Bratt	1980-84	488	5. Dawn Silliker	1984-88	287
3. Cheryl Brandell	1984-89	424			

Bold Face indicates current player.

UNIVERSITY OF MONTANA WOMEN'S BASKETBALL RECORDS

TEAM RECORDS

SEASON:

Most Wins — 28, 1987-88
Scoring Averages — 71.3, 1988-89
Field Goals — 888, 1988-89
Field Goal Attempts — 1957, 1984-85
Field Goal Percentage — .476, 1987-88
Three-Point Field Goals — 44, 1988-89
Three-Point Field Goal Attempts — 123, 1988-89
Three-Point Field Goal Percentage — .381, 1987-88
Free Throws — 524, 1984-85
Free Throw Attempts — 750, 1984-85
Free Throw Percentage — .699, 1984-85
Rebounds — 1381, 1980-81
Rebounding Average — 46.7, 1979-80
Assists — 567, 1986-87
Steals — 337, 1980-81
Blocked Shots — 194, 1988-89
Defensive Scoring Average — 53.5, 1981-82
Winning Percentage — 933, 1987-88

SINGLE GAME:

Most Points — 96 vs. Idaho, Feb. 22, 1987
Fewest Points Allowed — 23 vs. Rocky Mountain College, Dec. 27, 1988
Most Rebounds — 66 vs. Montana State, Feb. 12, 1981 and vs. Utah State, Jan. 4, 1982



INDIVIDUAL RECORDS

CAREER:

Most Points — 1,470, Lisa McLeod, 1985-89
Most Rebounds — 856, Doris Deden Hasquet, 1980-84
Most Assists — 511, Margaret Williams, 1982-87
Most Steals — 301, Cheri Bratt, 1980-84
Most Blocked Shots — 237, Lisa McLeod, 1985-89

SEASON:

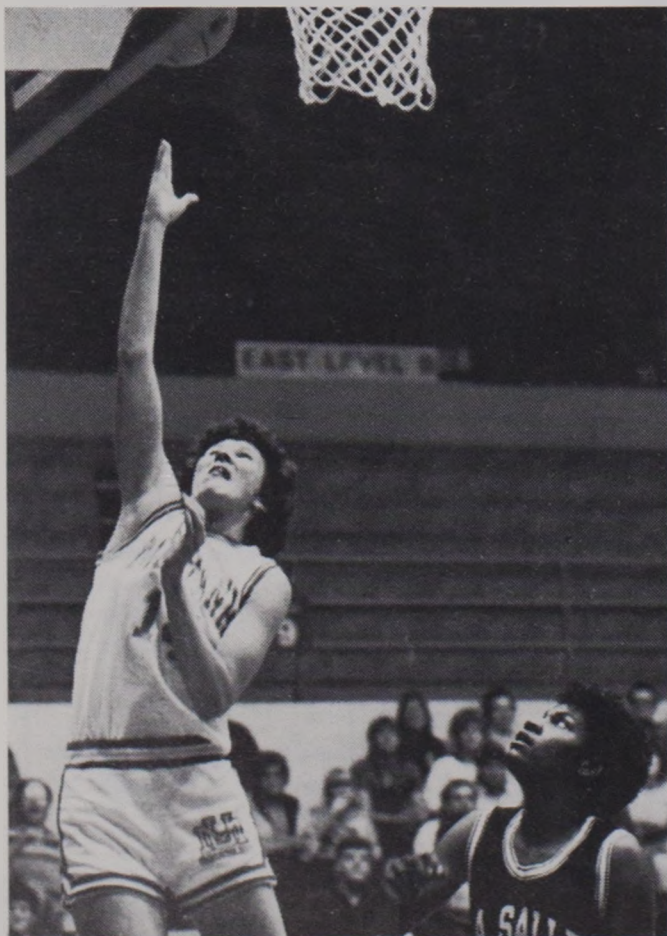
Most Points — 499, Marti Leibenguth, 1987-88
Highest Scoring Average — 16.6, Marti Leibenguth, 1987-88
Most Field Goals — 198, Marti Leibenguth, 1987-88
Most Field Goal Attempts — 395, Jill Greenfield, 1980-81
Highest Field Goal Percentage — .572, Marti Leibenguth, 1985-86
Most Three-Point Field Goals — 37, Shannon Cate, 1988-89
Most Three-Point Field Goal Attempts — 85, Shannon Cate, 1988-89
Highest Three-Point Field Goal Percentage — .435, Shannon Cate, 1988-89
Most Free Throws — 117, Sharla Muralt, 1984-85
Most Free Throw Attempts — 166, Sharla Muralt, 1984-85
Highest Free Throw Percentage — .852, Janet Ruetten, 1979-80
Most Rebounds — 318, Jill Greenfield, 1980-81
Highest Rebounding Average — 10.6, Jill Greenfield, 1980-81
Most Assists — 209, Margaret Williams, 1986-87
Most Steals — 94, Cheri Bratt, 1980-81
Most Blocked Shots — 65, Lisa McLeod, 1987-88

SINGLE GAME:

Most Points — 32, Jill Greenfield vs. Boise State, Feb. 9, 1980
Most Rebounds — 19, Three different players
Most Assists — 11, Margaret Williams — 3 times
Karyn Ridgeway vs. W. Montana, Dec. 1, 1986

ATTENDANCE:

Single Game — 9,258 vs. Montana State, Feb. 6, 1988
Season Average — 3,119, 1987-88



UNIVERSITY OF MONTANA WOMEN'S BASKETBALL SERIES RECORDS

School	W	L	Series Began
Alaska-Anchorage	5	1	1977-78
Arkansas	0	2	1982-83
Boise State	21	6	1975-76
Brigham Young	1	2	1981-82
Cal State-Fullerton	2	0	1982-83
California-Irvine	2	0	1986-87
Calgary	2	0	1983-84
California	2	1	1982-83
Carroll College	11	1	1974-75
Central Washington	0	4	1974-75
Chapman College	1	0	1985-86
Colorado	1	1	1978-79
Colorado State	3	1	1979-80
Creighton	1	1	1986-87
DePaul	1	0	1986-87
Drake	0	1	1981-82
Eastern Illinois	1	0	1988-89
Eastern Montana	7	3	1975-76
Eastern Oregon	0	1	1974-75
Eastern Washington	23	9	1974-75
Flathead Valley CC	5	7	1974-75
Florida	0	1	1984-85
Gonzaga	6	0	1980-81
College of Great Falls	7	0	1978-79
Idaho	14	5	1975-76
Idaho State	17	1	1978-79
Iowa	1	0	1980-81
Kansas State	0	2	1983-84
Lamar	1	0	1987-88
LaSalle	1	0	1985-86
Lethbridge	1	0	1975-76
Minnesota	1	0	1984-85
Montana State	28	6	1974-75
Montana Tech	7	0	1977-78
Nebraska	2	0	1986-87
Nevada-Reno	7	0	1983-84
North Dakota	1	1	1977-78
North Dakota State	1	0	1977-78
North Idaho	1	0	1974-75
Northeast Louisiana	0	1	1982-83
Northern Arizona	4	0	1987-88
Northern Montana	6	0	1975-76
Notre Dame	1	0	1986-87
Oregon	1	7	1977-78
Oregon College of Ed.	0	2	1977-78
Oregon State	1	7	1976-77
Pacific	2	1	1982-83
Pacific Lutheran	0	1	1975-76
Penn State	0	1	1983-84

School	W	L	Series Began
Pepperdine	1	0	1985-86
Portland	1	0	1988-89
Portland State	13	3	1976-77
Puget Sound	1	0	1984-85
Rocky Mountain	4	0	1974-75
St. Mary's (Calif.)	3	0	1980-81
San Francisco	1	1	1980-81
San Jose State	0	1	1985-86
Santa Clara	1	0	1984-85
Southern California	0	2	1983-84
Stanford	2	1	1980-81
Stephen F. Austin	0	1	1986-87
Texas	0	1	1988-89
U.S. International	1	0	1981-82
Utah	5	0	1981-82
Utah State	3	2	1978-79
Washington	8	10	1974-75
Washington State	13	9	1974-75
Wayland Baptist	0	1	1981-82
Weber State	19	2	1977-78
West Texas State	0	1	1984-85
West Virginia	0	1	1984-85
Western Montana	5	0	1974-75
Whitworth	1	0	1975-76
Wyoming	3	0	1983-84

YEAR-BY-YEAR RESULTS

Season	Coach	Record
1974-75	Diana Westbrook	11-8
1975-76	Barbara Eisenbarth	10-13
1976-77	Eddye McClure	4-14
1977-78	Eddye McClure	8-13
1978-79	Robin Selvig	13-13
1979-80	Robin Selvig	19-10
1980-81	Robin Selvig	22-8
1981-82	Robin Selvig	22-5
1982-83	Robin Selvig	26-4
1983-84	Robin Selvig	27-4
1984-85	Robin Selvig	22-10
1985-86	Robin Selvig	27-4
1986-87	Robin Selvig	26-5
1987-88	Robin Selvig	28-2
1988-89	Robin Selvig	27-4
Totals		292-117

THE OPPONENTS



UNIVERSITY OF WASHINGTON

Location: Seattle, WA
Nickname: Huskies
Conference: Pacific-10
Athletic Director: Mike Lund
SID: Cindy Fester (206) 543-2230
1988-89 Record: 23-10

Series Record: 8-8
Head Coach: Chris Gobrecht (USC '77)
Coach's Record at UW: 95-28, 4 years
Coach's Collegiate Record: 180-120, 10 years
Returning Letterwinners & Starters: 10-4



BOWLING GREEN STATE UNIVERSITY

Location: Bowling Green, OH
Nickname: Falcons
Conference: Mid-American
Athletic Director: Jack Gregory
SID: Chris Sherk (419) 372-7076
1988-89 Record: 27-4

Series Record: First Meeting
Head Coach: Fran Voll (BGSU '68)
Coach's Record at BGSU: 108-36, 5 years
Coach's Collegiate Record: 108-36, 5 years
Returning Letterwinners & Starters: 8-2



KANSAS STATE UNIVERSITY

Location: Manhattan, KS
Nickname: Lady Cats
Conference: Big Eight
Athletic Director: Steve Miller
SID: Ben Boyle (913) 532-6735
1988-89 Record: 18-11

Series Record: KSU leads 2-0
Head Coach: Matilda Mossman (Western KY '79)
Coach's Record at KSU: 80-66, 6 years
Coach's Collegiate Record: 80-66, 6 years
Returning Letterwinners & Starters: 10-5



UNIVERSITY OF PORTLAND

Location: Portland, OR
Nickname: Pilots
Conference: West Coast
Athletic Director: Joe Etzel
SID: David Cohen (503) 283-7117
1988-89 Record: 7-21

Series Record: UM leads 1-0
Head Coach: Jim Sollars (Seattle Pacific '66)
Coach's Record at UP: 35-49, 3 years
Coach's Collegiate Record: 58-106, 6 years
Returning Letterwinners & Starters: 7-3



BRIGHAM YOUNG UNIVERSITY

Location: Provo, UT
Nickname: Cougars
Conference: High Country Athletic
Athletic Director: Lu Wallace
SID: Patricia Knoell (801) 378-4908
1988-89 Record: 8-19

Series Record: BYU leads 2-1
Head Coach: Jeanie C. Wilson (BYU '74)
Coach's Record at BYU: 0-0, 1st year
Coach's Collegiate Record: 0-0, 1st year
Returning Letterwinners & Starters: 6-2



UNIVERSITY OF UTAH

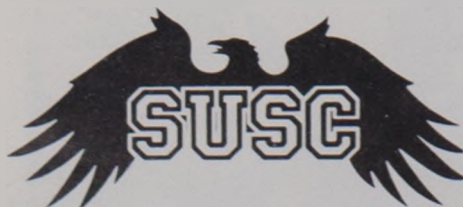
Location: Salt Lake City, UT
Nickname: Lady Utes
Conference: High Country
Athletic Director: Dr. Chris Hull
SID: Liz Abel (801) 581-3511
1988-89 Record: 24-6

Series Record: UM leads 5-0
Head Coach: Elaine Elliott (Boise '77)
Coach's Record at UU: 119-54, 6 years
Coach's Collegiate Record: 119-54, 6 years
Returning Letterwinners & Starters: 8-2

SOUTHERN UTAH STATE

Location: Cedar City, UT
Nickname: Thunderbirds
Conference: Independent
Athletic Director: Jack Bishop
SID: Jim Robinson (801) 586-7752
1988-89 Record: 7-19

Series Record: First Meeting
Head Coach: Clay Anderson (BYU '84)
Coach's Record at SUS: 26-26, 2 years
Coach's Collegiate Record: 26-26, 2 years
Returning Letterwinners & Starters: 8-1





WEBER STATE COLLEGE

Location: Ogden, UT
 Nickname: Lady Wildcats
 Conference: Big Sky
 Athletic Director: Dr. Richard Ordyna
 SID: Nan Holyoak (801) 626-6012
 1988-89 Record: 17-9

Series Record: UM leads 19-2
 Head Coach: Carla Taylor (WSC '84)
 Coach's Record at WSC: 17-9, 1 year
 Coach's Collegiate Record: 17-9, 1 year
 Returning Letterwinners & Starters: 10-2



NORTHERN ARIZONA UNIVERSITY

Location: Flagstaff, AZ
 Nickname: Lady Lumberjacks
 Conference: Big Sky
 Athletic Director: Tom Jurich
 SID: Mary Norby (602) 523-6330
 1988-89 Record: 12-14

Series Record: UM leads 4-0
 Head Coach: Dave Brown (New Mexico State '63)
 Coach's Record at NAU: 74-82, 5 years
 Coach's Collegiate Record: 350-215, 18 years
 Returning Letterwinners & Starters: 8-2



UNIVERSITY OF NEVADA

Location: Reno, NV
 Nickname: Wolf Pack Women
 Conference: Big Sky
 Athletic Director: Anne Hope
 SID: Angie Taylor (702) 784-4567
 1988-89 Record: 2-25

Series Record: UM leads 4-0
 Head Coach: Charlotte "Chickie" Mason (Wayland Baptist '69)
 Coach's Record at UNR: 2-23
 Coach's Collegiate Record: 21-61
 Returning Letterwinners & Starters: 8-4



UNIVERSITY OF IDAHO

Location: Moscow, ID
 Nickname: Lady Vandals
 Conference: Big Sky
 Athletic Director: Gary Hunter
 SID: Roger McAfee (208) 885-0211
 1988-89 Record: 18-11

Series Record: UM leads 14-5
 Head Coach: Laurie Turner
 Coach's Record at UI: 33-50, 4 years
 Coach's Collegiate Record: 110-83, 7 years
 Returning Letterwinners & Starters: 6-3



EASTERN WASHINGTON UNIVERSITY

Location: Cheney, WA
 Nickname: Eagles
 Conference: Big Sky
 Assoc. Athletic Dir.: Darlene Bailey
 SID: Kory Boatman (509) 359-6334
 1988-89 Record: 10-16

Series Record: UM leads 23-9
 Head Coach: Bill Smithpeters (Otterbein '57)
 Coach's Record at EWU: 242-141, 13 years
 Coach's Collegiate Record: 242-141, 13 years
 Returning Letterwinners & Starters: 8-5



IDAHO STATE UNIVERSITY

Location: Pocatello, ID
 Nickname: Bengals
 Conference: Big Sky
 Athletic Director: Tom Jewell
 SID: Dave Geringer (208) 236-2621
 1988-89 Record: 7-19

Series Record: UM leads 7-1
 Head Coach: Ted Anderson (Western Montana '66)
 Coach's Record at ISU: 16-35, 2 years
 Coach's Collegiate Record: 118-93, 8 years
 Returning Letterwinners & Starters: 7-2



MONTANA STATE UNIVERSITY

Location: Bozeman, MT
 Nickname: Bobcats
 Conference: Big Sky
 Athletic Director: Dr. Virginia Hunt
 SID: Tom Schulz (406) 994-5130
 1988-89 Record: 16-11

Series Record: UM leads 28-6
 Head Coach: Judy Spoelstra (Oregon State '83)
 Coach's Record at MSU: 0-0, 1st year
 Coach's Collegiate Record: 0-0, 1st Year
 Returning Letterwinners & Starters: 4-2



GONZAGA UNIVERSITY

Location: Spokane, WA
 Nickname: Bulldogs
 Conference: West Coast
 Athletic Director: Dan Fitzgerald
 SID: Oliver Pierce (509) 328-4203
 1988-89 Record: 15-13

Series Record: UM leads 6-0
 Head Coach: Julie Sullivan (Stephen F. Austin '79)
 Coach's Record at GU: 0-0, 1st year
 Coach's Collegiate Record: 73-118, 7 years
 Returning Letterwinners & Starters: 7-3



UNIVERSITY OF CALIFORNIA

Location: Berkeley, CA
 Nickname: Golden Bears
 Conference: Pacific-10
 Athletic Director: Dr. Luella Lilly
 SID: Chris Dawson (415) 643-7244
 1988-89 Record: 13-15

Series Record: UM leads 2-1
 Head Coach: Gooch Foster (George Peabody '63)
 Coach's Record at UC: 184-10, 10 years
 Coach's Collegiate Record: 268-160, 16 years
 Returning Letterwinners & Starters: 11-4



UNIVERSITY OF SAN FRANCISCO

Location: San Francisco, CA
 Nickname: Lady Dons
 Conference: West Coast
 Athletic Director: Fr. Robert A. Sunderland, S.J.
 SID: Barbie Larimore (415) 666-6161
 1988-89 Record: 8-19

Series Record: USF leads 1-0
 Head Coaches: Bill Nephel (Cortland State '74) Mary Hile-Nephel (USF '81)
 Coaches' Records at USF: 17-36, 2 years
 Coaches' Collegiate Records: B. Nephel 70-71, 5 yrs., M. Hile-Nephel 17-36, 2 yrs.
 Returning Letterwinners & Starters: 10-4



TEXAS CHRISTIAN UNIVERSITY

Location: Fort Worth, TX
 Nickname: Lady Frogs
 Conference: Southwest
 Athletic Director: Frank Windegger
 SID: David Nelson (817) 370-1439
 1988-89 Record: 9-16

Series Record: First Meeting
 Head Coach: Fran Garmon (Mary-Hardin Baylor '61)
 Coach's Record at TCU: 48-113, 6 years
 Coach's Collegiate Record: 507-362, 25 years
 Returning Letterwinners & Starters: 8-2



WASHINGTON STATE UNIVERSITY

Location: Pullman, WA
 Nickname: Cougars
 Conference: Pacific-10
 Athletic Director: Jim Livengood
 SID: Scott Hill (509) 335-0276
 1988-89 Record: 13-15

Series Record: UM leads 13-9
 Head Coach: Harold Rhodes (WSU '77)
 Coach's Record at WSU: 66-124, 6 years
 Coach's Collegiate Record: 66-124, 6 years
 Returning Letterwinners & Starters: 8-4



PORTLAND STATE UNIVERSITY

Location: Portland, OR
 Nickname: Vikings
 Conference: Independent
 Athletic Director: Roy Love
 SID: Mike Lund (503) 464-4000
 1988-89 Record: 14-13

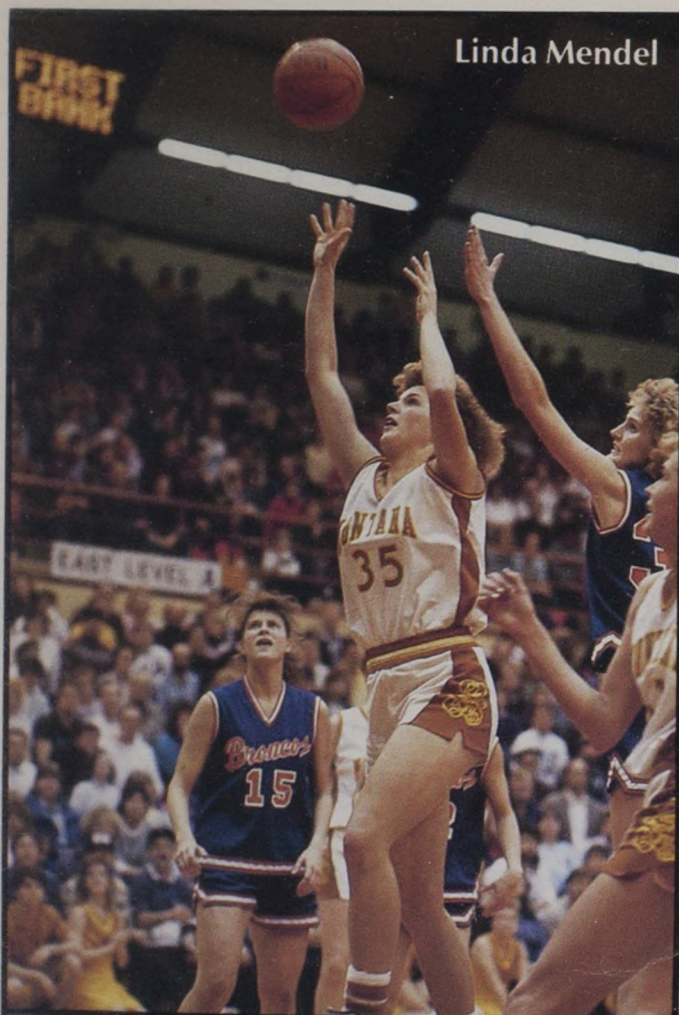
Series Record: UM leads 14-2
 Head Coach: Greg Bruce (Purdue '72)
 Coach's Record at PSU: 34-46, 3 years
 Coach's Collegiate Record: 34-46, 3 years
 Returning Letterwinners & Starters: 8-4



BOISE STATE UNIVERSITY


Location: Boise, ID
 Nickname: Broncos
 Conference: Big Sky
 Athletic Director: Gene Bleymaier
 SID: Lori Orr Hays (208) 385-3438
 1988-89 Record: 18-10


Series Record: UM leads 21-10
 Head Coach: June Daugherty (Ohio State '78)
 Coach's Record at BSU: 0-0, 1st year
 Coach's Collegiate Record: 0-0, 1st year
 Returning Letterwinners & Starters: 10-2





A Crowd Pleaser


. . . Lady Griz Basketball

 **Ranking** The University of Montana Lady Griz were ranked as high as **13th in the Associated Press Poll** during the 1987-88 season. UM received votes in both the AP and the *USA Today* throughout the 1988-89 season.

 **Postseason** The Lady Griz have participated in postseason tournaments the last 11 seasons in-a-row, including **five NCAA tournaments**. In 1988-89, UM defeated Cal State-Fullerton in the opening round and advanced to play national power Texas in the NCAA Tournament.

 **Attendance** Montana has been ranked 7th nationally in attendance two years in-a-row. The Lady Griz averaged 2,788 fans in 1988-89 after setting a school record with an average of 3,161 the year before. UM had one of the biggest crowds in the nation with 9,251 at an intra-state battle against Montana State in 1988.

 **20-Win Seasons** The Lady Griz have one of the **Top 5** winningest programs in the nation over the past nine seasons. UM has won at least 20 games each of those nine seasons and has a record of 225-46 during that time span.

 **Head Coach Robin Selvig** The **seventh winningest** active Division I coach, former Grizzly standout Robin Selvig has a school record 259 victories. His overall record is 259-69 for a winning percentage of 78.3%. His teams have won regular season conference titles seven of the past eight seasons. Selvig has been named conference Coach of the Year seven times and has received district honors four times.

SELVIG'S YEAR-BY-YEAR RECORDS

1978-79	... 13-13	... Conference Tournament
1979-80	... 19-10	... Conference Tournament
1980-81	... 22-8	... Conference Tournament
1981-82	... 22-5	... AIAW National Tournament
1982-83	... 26-4	... NCAA Tournament
1983-84	... 27-4	... NCAA Tournament (Sweet 16)
1984-85	... 22-10	... Women's NIT
1985-86	... 27-4	... NCAA Tournament (2nd Round)
1986-87	... 26-5	... Women's NIT
1987-88	... 28-2	... NCAA Tournament (2nd Round)
1988-89	... 27-4	... NCAA Tournament (2nd Round)

THE PHOTO ABOVE is the Lady Griz—Stanford 1988 2nd round NCAA game played in front of a sold out crowd in Missoula. The Lady Griz lost 74-72 in overtime with UM's Marti Leibenguth (with ball) scoring a career-high 27 points.

(Photo by Geoffrey Sutton)