

University of Montana

ScholarWorks at University of Montana

Lady Griz Volleyball Media Guides, 1979-2008

Intercollegiate Athletics

1993

Lady Griz Volleyball Media Guide, 1993

University of Montana (Missoula, Mont. : 1965-1994). Athletics Department

Follow this and additional works at: https://scholarworks.umt.edu/ladygrizvolleyball_mediaguides

Let us know how access to this document benefits you.

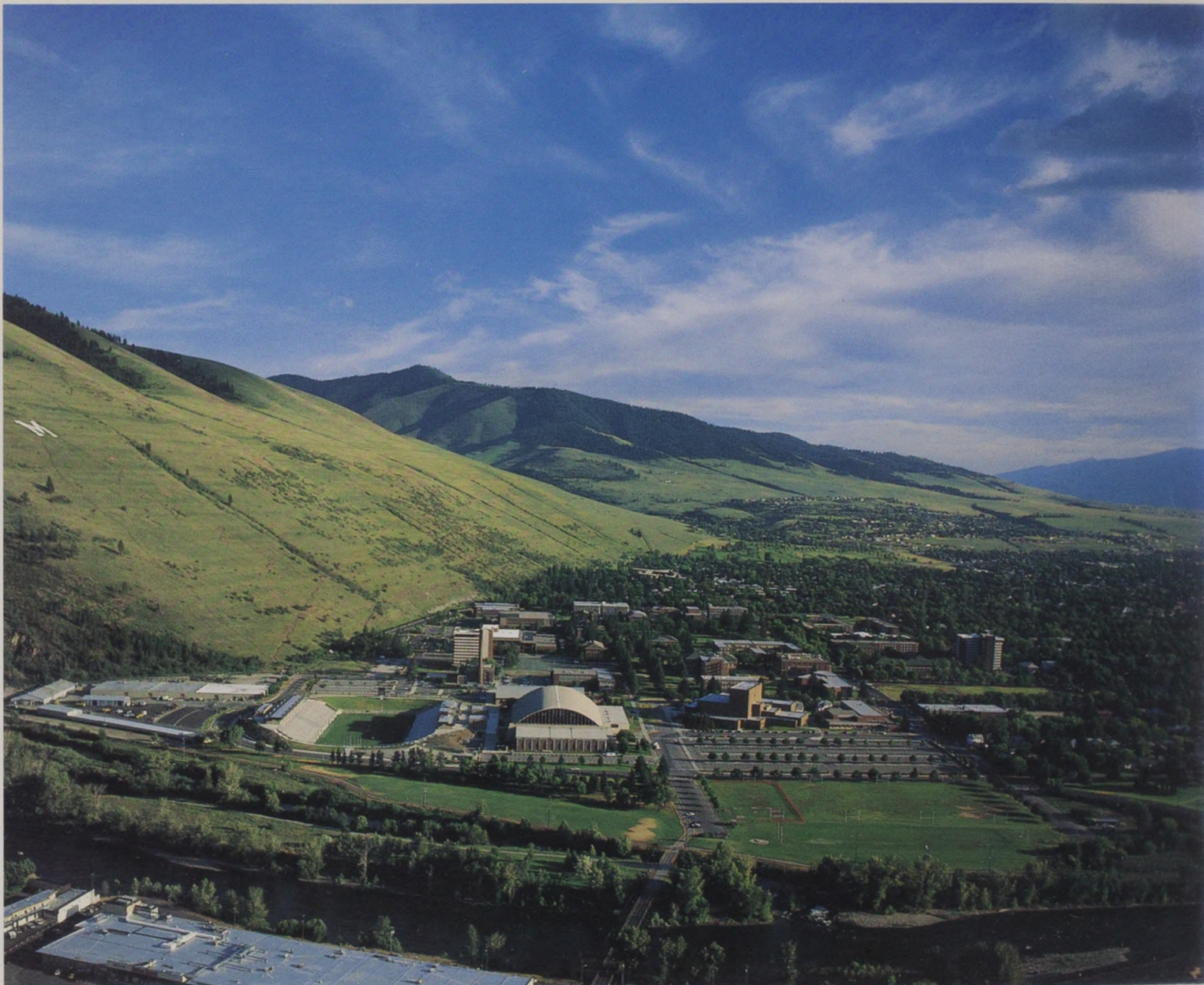
Recommended Citation

University of Montana (Missoula, Mont. : 1965-1994). Athletics Department, "Lady Griz Volleyball Media Guide, 1993" (1993). *Lady Griz Volleyball Media Guides, 1979-2008*. 13.
https://scholarworks.umt.edu/ladygrizvolleyball_mediaguides/13

This Guide is brought to you for free and open access by the Intercollegiate Athletics at ScholarWorks at University of Montana. It has been accepted for inclusion in Lady Griz Volleyball Media Guides, 1979-2008 by an authorized administrator of ScholarWorks at University of Montana. For more information, please contact scholarworks@mso.umt.edu.

DEALING





LADY GRIZ VOLLEYBALL

sponsored by



The University of Montana Quick Facts

L A D Y G R I Z V O L L E Y B A L L

Location	Missoula, Montana
Chartered	February 17, 1893
Enrollment	10,600
President	Dr. George Dennison
Athletic Director	Bill Moos (406)243-5331
Associate Athletic Director	Kathy Noble (406)243-5331
NCAA Faculty Representative.....	Dr. Robert Lindsay
Sports Information Director	Linda McCarthy
SID's Office Phone Number	(406)243-5414
SID's Home Phone Number	(406)728-4054
Sports Information FAX Number	(406)243-6859
Press Row Phone Number	(406)243-4281
Nickname	Lady Griz
Colors	Copper, Silver & Gold
Home Court	Dahlberg Arena (9,057)
Conference.....	Big Sky Conference
1992 Conference Record & Finish	13-1/1st
1992 Overall Record & Finish	19-13/2nd-Big Sky Tournament
Returning Letter Winners & Starters.....	9 & 5
Head Coach	Dick Scott
Alma Mater	Montana State, 1965
Record at Montana	313-221 (15 Years)
Collegiate Record	424-241 (20 Years)
Assistant Coach	Donna Finney (Washington State, 1989)
Graduate Assistant	Teri Johnson (Colorado College, 1991)
Volleyball Office Phone Number	(406)243-5411
Mailing Address	Department of Intercollegiate Athletics Harry Adams Field House The University of Montana Missoula, Montana 59812

Table of Contents

Page 1.....	Quick Facts/Table of Contents
2	The University of Montana
3	UM Administration
4	Athletic Personnel
5	Head Coach Dick Scott
6	Assistant Coaches
7	1993 Season Outlook
8	Roster at a Glance
9	1993 Lady Griz Roster & Team Photo
10	Dana Bennish, Stacy Conway, Linde Eidenberg
11	Karen Goff, Sarah Hurlburt, Andrea McHugh
12	Jennifer Moran, Hiromi Oguchi, Jennifer Patera
13	Michelle Peterson, Inga Swanson, Sheri Vinion
14	Heidi Williams
15	Series Record
16	1992 Stats & Results
17-19.....	Lady Griz Record Book
20	Understanding Volleyball
21	All-Time Letter Winners
22-25.....	All-Time Results
26-28.....	Lady Griz Opponents

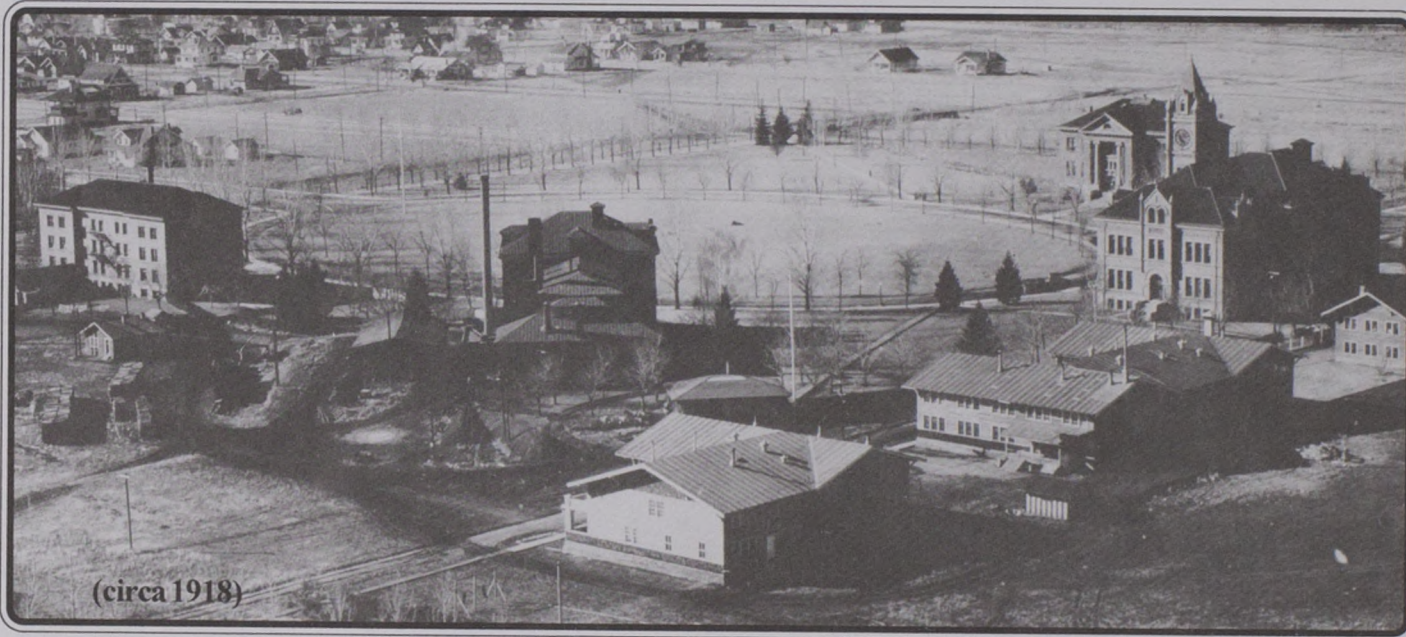


Montana's Main Hall

ON THE COVER: Coach Dick Scott will be "dealing aces" in UM's Centennial year with returning all-Northwest players Karen Goff, Jennifer Moran and Linde Eidenberg.

*Written by: Linda McCarthy, Assistant SID
 Edited by: Cindy Hodgman and Linda McCarthy
 Photography by: Todd Goodrich
 Cover by: Mark Bryant
 Printed by: UM Printing Services*

The University of Montana



The University of Montana in Missoula is located in a mountain forest setting in beautiful western Montana. It is halfway between Glacier and Yellowstone national parks.

Four wilderness areas are located near Missoula. The natural surroundings offer excellent opportunities for hunting, fishing, backpacking, river floating, camping and other outdoor recreational pursuits. Two excellent winter ski areas are within minutes of the University. Several other ski areas are only a couple of hours away by car. UM owns and operates its own golf course near the campus.

The University of Montana is one of the West's pioneers in education and is celebrating its Centennial this year, as it was chartered February 17, 1893. The school opened in September 1895, with 50 students enrolled the first day. Located on 207 acres at the base of Mount Sentinel, UM has grown from 50 students and seven faculty members to a present enrollment of about 10,000 with approximately 450 full-time faculty positions.

Throughout its history, the University of Montana has sustained a high standard of academic excellence in teaching, research and service.

UM offers a general associate of arts degree and bachelor's degrees in 50 fields. It offers master's degrees in 45 programs and doctoral degrees in nine.

The College of Arts and Sciences, which is the core of the University, includes a full range of programs and courses in the life sciences, physical sciences, social sciences and humanities. The college also offers curricula in interdisciplinary fields such as ethnic studies and liberal studies.

The University also has schools of business administration, fine arts, journalism, education, forestry, law, and pharmacy and allied health sciences.

The University aims to provide its students a humane and productive learning experience with the best facilities possible. The administration, faculty and staff strive for this goal.



President George Dennison

George Dennison became the 16th president of The University of Montana on August 15, 1990.

Before coming to UM Dennison was provost and vice president for academic affairs at Western Michigan University in Kalamazoo, a post he had held since 1987.

He is a former resident of Kalispell, and a UM alumnus. A history professor, he earned two degrees in that field at UM: a master's in 1963 and a bachelor's with highest honors in 1962. In 1967, he completed a doctorate in history at the University of Washington.

Before joining Western Michigan's administration, he held a number of positions at Colorado State University between 1969 and 1987. They include history professor, admissions and records director, associate academic vice president, graduate school associate dean and associate dean of the college of the arts, humanities and social sciences.

Dennison and his wife, Jane, also from Kalispell, have two children.

Administration

Bill Moos is in his fourth year as Athletic Director at The University of Montana. During his first three years at UM, Moos has overseen a program that has produced seven Big Sky Championships and six teams that have qualified for NCAA postseason play.

Moos has been instrumental in generating revenue for Grizzly athletics by incorporating the Grizzly Athletic Association into the department and by creating a new position that concentrates on corporate sponsorships.

He has twice served as Director of the Big Sky Coors Light Men's Basketball Tournament and is a member of the NCAA Division I-AA Football Committee.

Moos came to UM from his alma mater, Washington State, where had been an associate athletic director since 1982.

He graduated from WSU in 1973 with a degree in History. As a Cougar athlete he was an all-Pac 10 and all-Pacific Coast selection in football. He played in the East-West Shrine Game in 1972.

Bill, and his wife, Kendra, have three children: Christa, 13, Brittany, 9, and Bo, 4.

Bill is starting his third year as the Director of Marketing and Media Relations. His duties include the identification and solicitation of potential corporate sponsors; evaluation and development of radio and television rights contracts; and committee chairman of UM's annual men's basketball tournament.

He was formerly the assistant director of the Grizzly Athletic Association at Montana, from 1988 to July of 1991.

"Grizzly Bill" was the "Voice" of Montana football and men's basketball for the past 20 years, before retiring from those duties this past spring. He has been named Montana's Sportscaster of the Year six times.

He served as sports information director at UM (1967-69) and was the sports editor at *The Missoulian* (1969-71).

Schwanke is a 1967 graduate of Montana, earning a B.A. degree in Journalism. He received Montana's Alumni Award on Centennial Charter Day, Feb. 18, 1993.

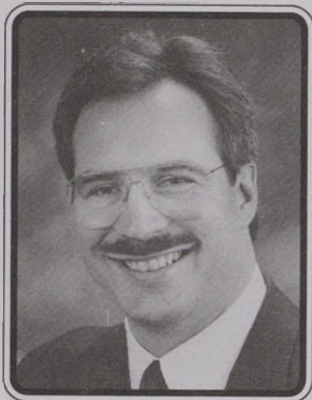
Bill and his wife, Lynn, have four children: Amber, 19, Myka, 16, Corbin, 14, and Genna, 12.

Al is beginning his 16th year as Executive Director of the Grizzly Athletic Association, formerly known as the Century Club.

In 1977 Century Club raised approximately \$70,000 for intercollegiate athletics. Last year the G.A.A. generated over \$600,000 in private support with emphasis primarily on athletic scholarships, but the G.A.A. assists in all phases of athletic department operations.

Kempfert came to UM from California Lutheran University, where he had served as the Director of Alumni/Parent Relations from 1971 to 1977. He served in the U.S. Army from 1968-71 and in Vietnam from 1969-70, receiving many commendations. He is an alumnus of C.L.U., where he was a three-sport letterman and voted the Outstanding Senior Athlete in 1967.

Al has three children: Kim, 24, Matthew, 21, and David, 19.



Bill Moos

Athletic Director



Kathy Noble

*Associate
Athletic Director*



Bill Schwanke

*Director of Marketing
and Media Relations*



Gary Hughes

*Manager of Athletic
Services*



Al Kempfert

*Executive Director
Athletic Development*



Robert Lindsay

Faculty Representative

Kathy has been the Associate Athletic Director at Montana the past six years. In 1989 she served as interim Athletic Director, overseeing two I-AA football playoff games, as well as the Big Sky Conference women's basketball tournament, and an NCAA first-round game in women's basketball.

She was instrumental in UM's successful hosting of the 1993 Division I Women's Basketball West Regional Championship held in Dahlberg Arena in March.

Prior to her arrival at UM, Noble was the Assistant Director of the Department of Parks, Recreation and Public Facilities in Miami, Florida.

She has 18 years of experience in college administration. She was the Associate Athletic Director at the University of Miami from 1983-86. Prior to that she was the Academic Counselor in athletics at Boise State (1982-83) and a Residence Hall Director at Washington State (1976-82).

Noble earned her B.A. degree in Social Sciences at Central Washington University in 1971. She received a Master's Degree in Counseling at Washington State in 1979 and is currently a Ph.D. candidate in Counseling at WSU.

Gary is the veteran of Montana's athletic department, and is starting his 28th year at UM. He became Athletic Ticket Manager in 1966, and was appointed Manager of Athletics Facilities and Revenue in 1978.

He manages all scheduling in Adams Field House, Washington-Grizzly Stadium and Domblaser Track and Field, in addition to overseeing the TIC-IT-E-Z Ticketing System, all athletic revenue, concessions operations, event staffing, and various other duties.

He is a native of Ronan, Montana and graduated in accounting from Missoula Business College in 1962. He gained experience in accounting and auditing before assuming his responsibilities at Montana.

Gary and his wife, Judy, have six children: Christian Ann, Dustin, Lance, Christopher, Sara and Cary.

Bob is in his sixth year as UM's Faculty Representative to the National College Athletic Association.

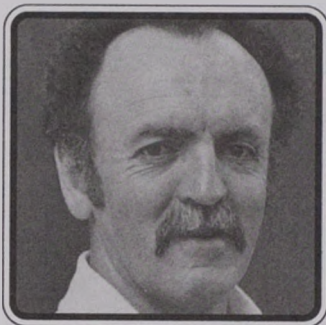
Dr. Lindsay has been a faculty member at UM since 1967. He is a professor of History and served as the department chairman from 1975-78. His specialty is Early Modern European History. Lindsay won the Distinguished Teacher Award at UM in 1985. He has taught overseas for UM in France in 1970-71 and 1981.

He previously taught at Ohio University. He earned a Ph.D. and M.A. at the University of Oregon and an M.A. at the University of Minnesota. He received his B.A. at Nevada-Reno in 1953.

As the NCAA Representative, he determines eligibility for UM athletes, makes NCAA rulings at the institutional level and is UM's representative to the NCAA. He has served on UM's University Athletic Committee for numerous years and has been chairman of the committee as well.

Bob and his wife, Joyce, have four children.

Athletic Personnel



Steve Hackney
Equipment Manager



Rob Stack
*Assistant Equipment
Manager*



Dennis Murphy
Athletic Trainer



Chris Fry
*Assistant Athletic
Trainer*



Dave Guffey
*Sports Information
Director*



Linda McCarthy
*Assistant Sports
Information Director*



Cindy Hodgman
*Sports Information
Secretary*



Cathy Grothe
*Director of Marketing
and Promotions*



Chuck Maes
*Assistant to the Athletic
Director, Business Affairs*



Patty Dwight
*Administrative Assistant,
Business Office*



Loren Flynn
*Assistant Manager,
Athletic Services*



Rae Proctor
*Administrative
Assistant*



Mike Marlow
*Assistant Director,
Athletic Development*



Marie Hibbard
*Coordinator of Athletic
Academic Services*



Jane Felstet
Administrative Secretary



Debbie Eviason
Volleyball Manager

Head Coach

Dick Scott

313-221, 15 Years at Montana

424-241, 20 Years Overall

Dick Scott will start his 16th year as head coach of The University of Montana Lady Griz volleyball team. After 15 years at UM, he has posted a 313-221 record and eleven 20-win seasons. Scott's 20-year overall record is 424-241.

Last year Scott led Montana to a 19-13 overall record and its second consecutive Big Sky regular-season title (13-1). Scott earned co-Coach of the Year honors in the Northwest Region after leading his team to the National Invitational Volleyball Championships.

In 1991 Scott led the Lady Griz to a best-ever 26-4 record and a second consecutive appearance in the NCAA Championships. He was named the Big Sky Conference Coach of the Year, and he earned his first co-Coach of the Year award.

The Lady Griz are the only Big Sky team to advance to the conference playoffs each of the past 11 seasons. In 1991 Montana became the only Big Sky team to go undefeated in the league at 16-0. Montana hosted its second Big Sky Volleyball Championship in 1992.

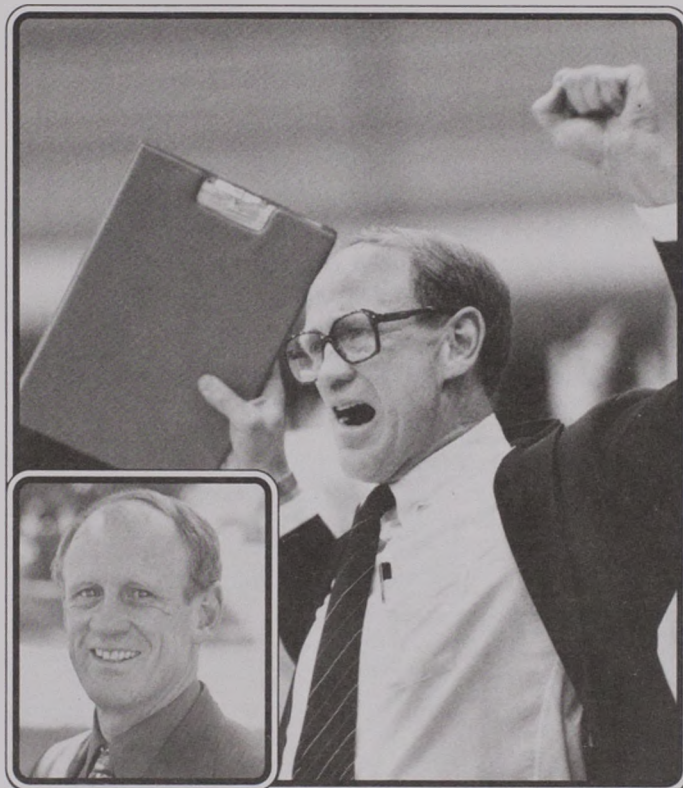
Before coming to Montana in 1978, Scott coached in California. From 1971 to 1978, he coached at Santa Monica Junior College. With 52 wins and only one loss in league play, his overall record there was 110-20. While coaching at Santa Monica J.C., Scott was also a graduate assistant for the UCLA Bruins from 1970 to 1978. He earned his master's degree in Health and Physical Education there. In addition, Scott taught physical education and general science at John Adams Junior High from 1970 to 1978.

While in Los Angeles, Scott led the Maccabi Volleyball Club to two national open championships. In 1976, his team won the USVBA national championships and took second in the AAU nationals, and in 1977 his team won the AAU national championships and took second in the USVBA nationals.

Scott has had a vast amount of international experience.

Between 1977 and 1979 Scott was the head coach for the U.S.A. Junior National team. In 1977, his team placed third at the Pacific Rim International tournament, and in 1978 and 1979, Scott's teams won the Pacific Rim championships. It was the first time the United States had won a gold medal in volleyball since the Pan-American Games in 1967.

In 1976, Scott was an assistant coach for the U.S.A. Junior National Team for the NORCECA Tournament. His team qualified for the World Junior Championships the following year.



Scott served as an assistant coach for the United States Olympic men's volleyball team when it participated in the U.S.A. Championship Series in 1985.

He also served as an assistant coach for the Men's National Team in the 1981 World University Games in Rumania and the U.S.A. Cup in 1985. In the fall of 1976, Scott was the assistant coach of the U.S.A. National Team which defeated the Suntory Club from Japan, the first time an American team defeated a team from Japan.

A native of Denton, Mont., Scott graduated with a bachelor's degree in Physical Education in 1965 from Montana State University, where he lettered in basketball and track. He served in the Air Force from 1965 to 1969.

Last spring, Scott was named the recipient of the Ed Chinske award, given annually by the Missoula Athletic Council to the outstanding professional in the field of sports.

In 1990 he became a published author, writing a chapter in "Volleyball's Cadre Collection--Volume II," an accumulation of coaching techniques written by some of the most prestigious coaches in volleyball.

In 1989, Scott was named the Outstanding Official for the State of Montana for his officiating of high school volleyball matches.

Dick has three children. Jean (21) played volleyball for Northwest Community College in Powell, Wyo. and Eastern Montana College in Billings. Patty (17) plays volleyball for Hellgate High School in Missoula, and Jack is 10.

Assistant Coaches

Donna Finney *Assistant Coach*

Donna Finney begins her third season as the assistant coach under Dick Scott. Her duties include assisting in all volleyball activities, encompassing recruiting, player counseling, fitness and health guidelines, budgeting and scheduling. She also assists in the development and direction of summer volleyball clinics and camps.

Before coming to Montana, Finney was a graduate assistant coach at Southern Illinois University in Carbondale for two years. In 1990 the Salukis went 12-16. At SIUC, Finney was also the Saluki camp director and co-director of the Carbondale Junior Sports Program.

Finney was a starter and four-year letter winner at Washington State from 1984 to 1989. She earned a B.A. degree in Child and Family Studies at WSU in 1989, and last spring she received her M.A. degree in Preschool Administration from Southern Illinois.

A native of Santa Monica, Calif., Finney attended Calabasas High School in Agoura, Calif., where she lettered in volleyball and basketball. As a junior, Finney's USVBA team placed eighth at nationals.



Teri Johnson *Graduate Assistant*

Teri Johnson begins her first season with the Lady Griz as the graduate assistant coach. Johnson will assist Scott and Finney in all coaching duties, including recruiting, scouting, conditioning and game management. She replaces Ann Schwenke.

Johnson graduated from Colorado College (Colorado Springs) in May 1991 with a B.A. in Biology. She is pursuing a Master of Arts degree in kinesiology and biomechanics. She came to Montana via Cal State-Northridge, where she began her graduate studies.

Johnson was an assistant volleyball coach at Colorado College in 1991, where she was responsible for recruiting, game management, fund-raising and conditioning. She also coached the Channel Islands Volleyball Club in California for girls 16 and under.

Johnson was a four-year letter winner at Colorado College, where she led the Tigers to a 74-37 record in four years. As a senior in 1990, she was an NCAA Division III All-American and team MVP, leading the Tigers to a 13-12 record and a West Regional playoff bid. Colorado College advanced to the NCAA Division III regional playoffs all four years Johnson played.

Johnson, who played right side hitter, led the Tigers in hitting percentage (.194) and had 250 kills, 238 digs and 167 blocks in 95 games her senior season. She had 504 kills in her career. As a freshman in 1987, she had seven errorless matches and helped lead the Tigers to a 26-8 record that season.

Last year Johnson played for the Ventura Slammers Professional volleyball team in California.

In addition to her volleyball expertise, Johnson is also a certified Emergency Medical Technician.

A native of Ojai, Calif., Johnson is the first volleyball graduate assistant coach hired from outside the Montana program.



Season Outlook

With a corp of healthy and experienced returning letter winners, UM head volleyball coach Dick Scott is in good position to win his third consecutive Big Sky Conference title in 1993. Scott returns nine players, including five starters, from last year's 13-1 Big Sky regular-season championship team.

"I feel really good about this year's team," said Scott. "My athletes understand what it takes to win, and this team has a great work ethic. I think we have things in perspective, and we have the tools necessary to win the conference title again."

Last season Montana went 19-11 and advanced to the National Invitational Volleyball Championships in Kansas City. It was the third national tournament appearance for the Lady Griz and their first visit to the NIVC.

This season Montana will improve upon that postseason experience with hopes of a third conference title and the Big Sky tournament hosting rights.

Leading the Lady Griz again this season is junior setter Linde Eidenberg. Montana's MVP as a sophomore, Eidenberg was an AVCA All-Northwest selection, averaging 11.63 assists per game. Linda's natural leadership ability and her continued improvement give the Lady Griz proficiency and confidence.

Backing up Eidenberg this season will be freshman Jennifer Patera, who redshirted for the Lady Griz last season.

Senior Jennifer Moran enters her final season of an excellent career at Montana to lead the outside hitting corps. The two-time All-Northwest selection will play another valuable role this season as one of UM's smartest hitters. Last year Moran led the Lady Griz in kills and digs after redshirting in 1991.

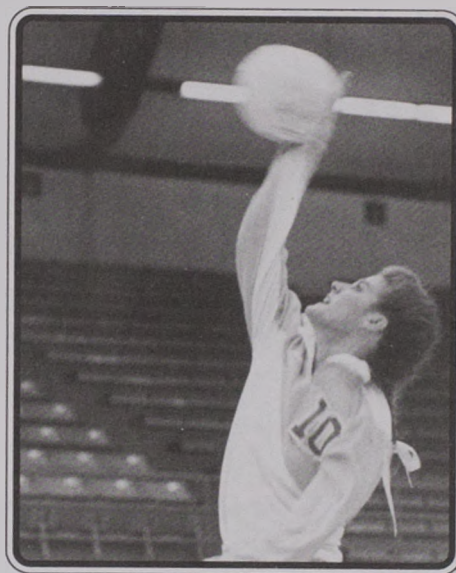
Joining Moran at the outside positions are junior Sarah Hurlburt, a returning starter, and sophomore Sheri Vinion. Lost is right-side hitter Trish Lake, a two-year starter who left

UM at the end of last semester. Sophomore Andi McHugh, who played mostly middle in high school, played a little right side last season. Coach Scott may also look to use three middle blockers in his offense.

"Our sudden change at right side makes me a little nervous," Scott said, "but Andi has come on and if she develops some consistency, then we're going to be fine there. Last spring we also experimented with playing some of our middles at right side. We will be strong there if Andi is tuned in mentally because she can pound the ball well and she is a disciplined blocker."

Incoming freshman Stacy Conway will inevitably add quality depth to the hitting crew, however a knee injury during last year's state volleyball tournament may give Conway the opportunity to redshirt her first season with the Lady Griz.

Montana's middle blocking duo from last



Junior Karen Goff

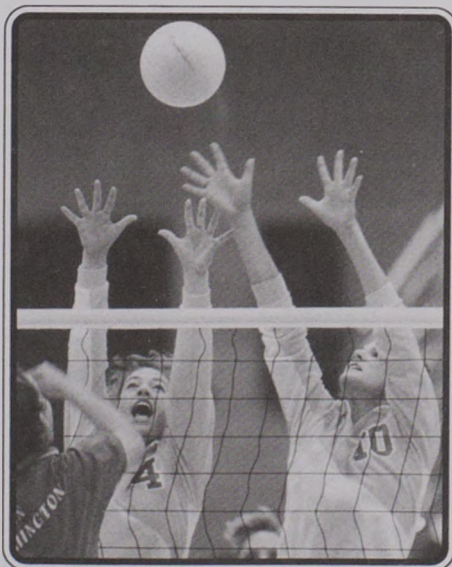
among its players make the Lady Griz a definite contender for the Big Sky title, but a tough preseason schedule on the road must be tackled early on.

The Lady Griz begin the season September 1 with a home match against Gonzaga. The rest of September's competition will be on the road. Montana will compete in tournaments at Montana State (Sept. 3-4), Oregon State (Sept. 10-11) and Texas Tech (Sept. 17-18). In Bozeman, Montana will pick up matches against Portland, Utah State, New Mexico State and Utah. In Corvallis, Montana will play Oregon State, Georgia and Baylor. In Lubbock the Lady Griz meet Texas Tech, Kentucky and Pepperdine.

"These tournaments will give us some quality competition in the early part of the season," Scott said. "We're in tournaments with other teams that have tremendous tradition and success at the national level. Georgia, Kentucky and Texas Tech are always in the postseason, and Pepperdine has never missed the NCAA playoffs until last year. The preseason is going to really test us."

Big Sky Conference action begins at home on September 24 & 25 when Montana hosts Eastern Washington and Idaho. The Vandals, who won the Big Sky tournament last year, lost only a couple of starters and return with a collection of good players. The Lady Griz will take a break from conference action in the middle of October to play Wyoming, Cal State-Northridge and Cal Poly-San Luis Obispo. The conference tournament is slated for Thanksgiving weekend (Nov. 26-27), and will be held at the site of the regular-season champion.

"It's definitely going to be a challenging year," Scott said, "but this team is looking forward to it. If we get a few breaks here and there and just keep focused, we've got a good chance to win our third Big Sky title. This team has the potential to be very, very good."



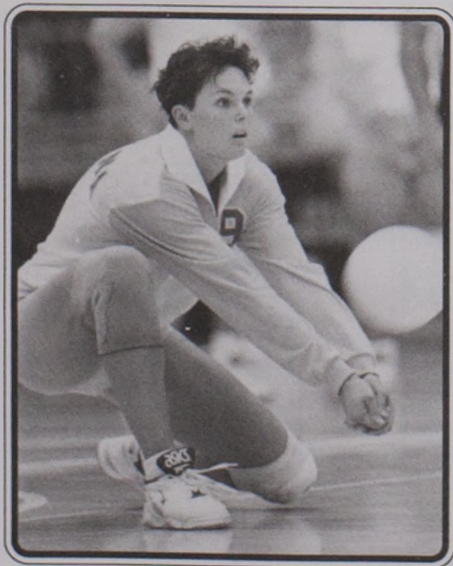
Juniors Linde Eidenberg & Karen Goff

season, juniors Karen Goff and Heidi Williams, will continue to dominate the net this year. Last year Goff was among the nation's top 20 blockers in Division I, even though she broke her arm in the Big Sky tournament and missed the NIVC. Williams has "made progress in leaps and bounds," according to Scott.

Joining Williams and Goff in the middle is sophomore Inga Swanson, the 1992 Rookie of the Year, and freshman Dana Bennish, a top-ranked California product.

Montana's tenacious back-row players are juniors Michelle Peterson and Hiromi Oguchi. Peterson, a veteran of the program, was Montana's co-Outstanding Backcourt Player last season. Oguchi replaces fellow Japanese Yuki Morita, and she will provide Montana with that Japanese discipline and work ethic.

Montana's experience and determination



Senior Jennifer Moran

Lady Griz At A Glance



#1 Michelle Peterson
5-5 Jr. Def. Specialist
Missoula, Montana



#2 Sarah Hurlburt
5-8 Jr. Outside Hitter
Billings, Montana



#3 Hiromi Oguchi
5-0 Jr. Def. Specialist
Tokyo, Japan



#4 Linde Eidenberg
5-8 Jr. Setter
Boring, Oregon



#5 Heidi Williams
5-11 Jr. Middle Blocker
Missoula, Montana



#6 Sheri Vinion
6-0 So. Outside Hitter
Missoula, Montana



#9 Jennifer Moran
6-0 Sr. Outside Hitter
Spokane, Washington



#10 Karen Goff
5-11 Jr. Middle Blocker
Puyallup, Washington



#11 Andrea McHugh
6-0 So. Outside Hitter
Butte, Montana



#12 Jennifer Patera
5-6 Fr. Setter
Havre, Montana



#13 Stacy Conway
5-11 Fr. Outside Hitter
Billings, Montana



#14 Dana Bennish
5-11 Fr. Middle Blocker
Tarzana, California



#15 Inga Swanson
6-0 So. Middle Blocker
Pendroy, Montana



Dick Scott
Head Coach



Donna Finney
Assistant Coach



Teri Johnson
Graduate Assistant
Coach

Lady Griz Roster



Front Row L-R: Graduate Assistant Coach Teri Johnson, Assistant Coach Donna Finney, Stacy Conway, Jennifer Patera, Inga Swanson, Heidi Williams, Karen Goff, Dana Bennish, Manager Debbie Eviason, Head Coach Dick Scott. **Second Row L-R:** Jennifer Moran, Sarah Hurlburt, Sheri Vinion, Linde Eidenberg, Hiromi Oguchi. **Third Row L-R:** Andi McHugh, Michelle Peterson.

NO	PLAYER	POS	HT	YR	EXP	HOMETOWN/SCHOOL
1	Michelle Peterson	DS	5-5	JR	2V/RS	Missoula, Mont./Big Sky HS
2	Sarah Hurlburt	OH	5-8	JR	2V/RS	Billings, Mont./West HS
3	Hiromi Oguchi	DS	5-0	JR	TR	Tokyo, Japan/Skagit Valley CC
4	Linde Eidenberg	S	5-8	JR	2V	Boring, Ore./Sam Barlow HS
5	Heidi Williams	MB	5-11	JR	2V/RS	Missoula, Mont./Big Sky HS
6	Sheri Vinion	OH	6-0	SO	1V/RS	Missoula, Mont./Big Sky HS
9	Jennifer Moran	OH	6-0	SR	3V/RS	Spokane, Wash./Shadle Park HS
10	Karen Goff	MB	5-11	JR	2V	Puyallup, Wash./Puyallup HS
11	Andrea McHugh	OH/MB	6-0	SO	1V/RS	Butte, Mont./Butte HS
12	Jennifer Patera	S	5-6	FR	RS	Havre, Mont./Havre HS
13	Stacy Conway	S/OH	5-11	FR	HS	Billings, Mont./Billings West HS
14	Dana Bennish	MB	5-11	FR	HS	Tarzana, Calif./Montclair Prep HS
15	Inga Swanson	MB	6-0	SO	1V	Choteau, Mont./Choteau HS

Head Coach	Dick Scott (16th Year)/(Montana State, 1965)
Assistant Coach	Donna Finney (Third Year)/(Washington State, 1989)
Graduate Assistant Coach	Teri Johnson (First Year)/(Colorado College, 1991)
Associate Athletic Director	Kathy Noble
Associate Athletic Trainer	Chris Fry
Sports Information Director	Linda McCarthy
Manager	Debbie Eviason

ALPHABETICAL ROSTER

Bennish, Dana - #14	Oguchi, Hiromi - #3
Conway, Stacy - #13	Patera, Jennifer - #12
Eidenberg, Linde - #4	Peterson, Michelle - #1
Goff, Karen - #10	Swanson, Inga - #15
Hurlburt, Sarah - #2	Vinion, Sheri - #6
McHugh, Andrea - #11	Williams, Heidi - #5
Moran, Jennifer - #9	

ROSTER BY YEAR

Senior(1):	Jennifer Moran	Sophomores (3):	Andrea McHugh
Juniors (6):	Linde Eidenberg		Sheri Vinion
	Karen Goff		Inga Swanson
	Sarah Hurlburt	Freshmen (3):	Dana Bennish
	Hiromi Oguchi		Stacy Conway
	Michelle Peterson		Jennifer Patera
	Heidi Williams		

Lady Griz Profiles



14 **DANA BENNISH**
5-11 Freshman
Middle Blocker
Tarzana, California

A highly-recruited athlete from Southern California, Dana Bennish is one of only two incoming freshmen for the Lady Griz this season. She is an ambidextrous middle blocker, who will add quality depth at the middle position.

A native of Tarzana, Calif., she was a three-sport standout at Montclair Prep High School in Van Nuys. She led the Mounties' volleyball team to a 14-3 record and the third round of the CIF Southern Section playoffs as a senior. She averaged 9.5 kills and 5.1 blocks per game. A two-time Most Valuable Player and the Outstanding Blocker last year, Bennish left Montclair owning several volleyball records.

She also played volleyball for the Valley Thunder Club last year, her club team winning tournaments in both San Diego and Santa Barbara.

In addition to her volleyball accolades, Bennish has won many awards and honors in both basketball and softball. She was a two-time MVP in both sports, and she was the Rookie of the Year in softball in 1989-90.

"I think we snuck Dana into our program," Scott said. "She is an excellent athlete and a potentially outstanding player. Dana has a high work ethic, and she definitely wants to be here. I am really excited about her. She will improve our depth at the middle position and give us more flexibility there. Although Dana played middle in high school, I think she may be a little more of a right side player. She is a blessing in disguise, and

she is going to end up having a real good career here."

The daughter of Corky and Betty Bennish of Tarzana, Calif., Dana was born on December 27, 1975. Montclair's Scholar Athlete of the Year as a junior and a four-year member of the California Scholarship Federation, Bennish is interested in studying Accounting at UM.

13 **STACY CONWAY**
5-11 Freshman
Outside Hitter
Billings, Montana



Stacy Conway comes to UM from Billings, where she earned 11 varsity letters in volleyball, basketball, track and field and softball. A rare left-handed hitter, Conway will probably redshirt her first season with the Lady Griz, as she tore her knee in the state championship volleyball tournament in March of last year.

Conway led her volleyball team to two consecutive conference titles in 1992 and 1993. She was a three-time MVP for the Bears and she left West as the number-one career leader in kills (1,127), service aces (273) and blocks (327). A three-time all-conference and all-state player, Conway is also among the top five all-time leaders in assists and digs, and she owns four season records.

Conway was a three-time MVP in basketball and a two-time all-state thrower for her track and field team. She also played in both the Montana All-Star games for basketball and volleyball.

"I know Stacy's rehab is going well," Scott said. "It was a real blow when she went down, but it may be a blessing, as I think we would have looked seriously at redshirting her anyway. It's almost a given now. I think that she may need that extra year, as she is still maturing and getting stronger. Stacy is going to have a real fine career here. In the long run, redshirting her will help both Stacy and the Lady Griz volleyball program."

The daughter of Pete and Darcy Conway of Billings, Stacy was born on August 27, 1975. She is interested in studying Business at UM.



4 **LINDE EIDENBERG**
5-8 Junior
Setter
Boring, Oregon

Montana's Most Valuable Player in 1992 returns to lead a more experienced team this season. Linde Eidenberg didn't miss a game last year as a sophomore, and this season the rare left-handed setter will be looking for even more success.

Eidenberg was a member of the 1992 AVCA All-Northwest Region team. She was also a 1992 Big Sky all-conference selection and the recipient of Montana's Outstanding Setter award. Eidenberg averaged 11.63 assists per game, the second-best in the Big Sky last season. She also led Montana in service aces (.47 per game). She earned Big Sky Player of the Week honors on October 5 after road wins over Northern Arizona and Weber State. After two seasons with Montana, Eidenberg is currently fifth on the all-time assist list with 1,379 career sets.

Eidenberg was Montana's 1991 Outstanding Rookie as a true freshman, playing in 63 games as primarily a back row player.

At Sam Barlow High School in Gresham, Ore., she led her team to a 25-8 record and a fourth-place finish at the Oregon State Championships. Her team was one of the Top 20 high school teams in the nation in 1990. Eidenberg was an all-conference, all-state and all-tournament selection in the Mount Hood Conference. She also played club ball for the Portland USVBA Volleyball Club, earning all-regional honors three times.

"I would like to see continued leadership from Linde," Scott said. "She is a natural for that area. I think Linde has done some great things physically, and she continues to improve every year. We expect a lot from Linde, and I really look forward to her having a great season."

A 1992 Big Sky all-academic selection, Eidenberg maintains a 3.5 grade-point average in Business Administration. She is the daughter of Pete and Linde Eidenberg of Boring, and she was born on March 20, 1973.

SEASON	GP	KILLS	ERR	TA	PCT	KPG	ASS	SA	SE	RE	DIGS	DPG	BS	BA	BPG
1991	63	14	9	54	.093	0.22	65	12	18	5	95	1.51	0	7	0.11
1992	113	134	56	346	.225	1.19	1314	53	73	1	345	3.05	8	45	0.47
TOTALS	176	148	65	400	.208	0.84	1379	65	91	6	440	2.50	8	52	0.34

Lady Griz Profiles

10

KAREN GOFF
5-11 Junior
Middle Blocker
Puyallup, Washington



Karen Goff's sophomore year ended in the postseason, as she broke her arm in the first game of the 1992 Big Sky Conference tournament and missed the National Invitational Volleyball Championships.

However, Goff earned several accolades last season. She was named to the 1992 AVCA All-Northwest team, as well as the 1992 Big Sky all-conference team. She led the Big Sky in blocks throughout the season (1.53), and was among the Top 20 blockers in Division I. Goff led UM in hitting percentage (.302) and was second in kills (2.82). She earned Big Sky Player of the Week honors after home wins over Boise and Idaho State. Goff started all 93 games she played in. For her efforts, Goff was named Montana's Outstanding Blocker and Outstanding Spiker.

Goff was one of only two true freshmen who played in 1991, and averaged 1.43 kills and 2.00 digs in 47 games.

As a prep player at Puyallup High School, Goff led the Vikings to a 12-2 record and a fifth-place finish at the Washington State Championships. Goff was named her team's MVP, the Bethal Tournament MVP and the MVP of the South Puget Sound League. She also earned all-league and all-state honors. Goff played for the Tacoma-Pierce Volleyball Club, one of the top USVBA club teams in the Northwest.

Goff lettered in basketball and softball, and was her hoop team's MVP and a two-time all-league selection. She also competed in soccer and track. "Right now our middle blocking is our team strength," Scott said. "Karen's arm seems to have healed very well. Last spring she had some pain, but I didn't see any alternation in arm swing. She was having the same power and ability to do things that I had seen in the past. Karen is a very strong force for us. She was one of the national leaders in blocking. When Karen was a freshman, she wasn't a very good blocker, but she went to work and now she is an outstanding blocker. I am really pleased with her."

Born on November 17, 1972, Karen is the daughter of Terry and Leigh Goff of Puyallup. She is a Sociology major, minoring in Criminology.

SEASON	GP	KILLS	ERR	TA	PCT.	KPG	ASS	SA	SE	RE	DIGS	DPG	BS	BA	BPG
1991	47	67	30	193	.192	1.43	4	16	17	7	94	2.00	10	30	0.85
1992	93	262	82	597	.302	2.82	10	26	51	30	184	1.98	30	112	1.53
TOTALS	140	329	112	790	.275	2.35	14	42	68	37	278	1.99	40	142	1.30



2

SARAH HURLBURT
5-8 Junior
Outside Hitter
Billings, Montana

UM's Most Improved Player in 1992, Sarah Hurlburt returns to the court for her fourth season as a Lady Griz. Hurlburt started for Montana throughout most of last season, averaging 2.08 kills and 2.11 digs per game.

As a redshirt freshman in 1991, Hurlburt played in only four games. She was one of five redshirts in 1990.

Hurlburt was the only unanimous pick for the 1989 Montana "AA" All-Star team. She averaged almost four kills per game for Billings West High School, and led the Bears to a 25-7 record as a senior. She was her team's MVP and Most Inspirational Player that season and was twice named Outstanding Offensive Player. Hurlburt was also a two-time all-state selection.

"Sarah is a very explosive hitter," Scott said. "Her strength is natural blocking instincts. She is our best blocking left side, as she had middle blocking experience in high school that has helped her a lot. Sarah can jump up and crush the ball, and has made tremendous improvements in her serve reception and defensive skills. She is able to read better, staying on her feet and running balls down. Sarah has made real improvements. She is learning how to hit different shots and to deal with the block better, and has the ability to really stuff some balls."

Born on May 21, 1972, Sarah, an Accounting major, is the daughter of David and Marcia Hurlburt of Billings.

SEASON	GP	KILLS	ERR	TA	PCT.	KPG	ASS	SA	SE	RE	DIGS	DPG	BS	BA	BPG
1991	4	1	5	13	.308	0.25	0	0	3	2	9	2.25	1	0	0.25
1992	84	175	105	616	.114	2.08	6	17	28	22	177	2.11	9	38	0.56
TOTALS	88	176	110	629	.105	2.00	6	17	31	24	186	2.11	10	30	0.55

11

ANDREA McHUGH
6-0 Sophomore
Outside Hitter
Butte, Montana



After playing in 17 games last season as a redshirt freshman, "Andi" McHugh will most likely fill the right side starting position left vacant by departing Trish Lake. McHugh was originally recruited to Montana as a middle blocker, but her flexibility makes her a valuable asset to the Lady Griz program. She redshirted for UM in 1991.

McHugh averaged 1.88 kills, 1.29 digs and .82 blocks last season. Her best match came against Eastern Washington on the road, when she had seven kills and only two errors on 13 attempts for a hitting percentage of .385. She also had nine digs, four aces and three blocks in that match.

She was a three-sport standout at Butte High School, leading the Bulldog volleyball team to a first-place finish in the Western "AA" conference. A two-time all-conference and all-state player, McHugh was a member of the 1991 Montana All-Star team, and she was named Butte's Outstanding Female Athlete of the Year as a senior. She was also a standout basketball and tennis player, earning many honors in both sports.

"Andi has come on and really done some things for us," Scott said. "She has had flashes of playing really well and just needs to develop consistency. If she does that, we're going to be just fine at the right side, our biggest question mark. When Andi is tuned in mentally, she can pound the ball well and is a pretty good blocker. Andi still needs to work on her back row skills, but she has improved quite a bit."

The Psychology major is the daughter of Marilyn McHugh of Butte. She was born on February 3, 1973.

SEASON	GP	KILLS	ERR	TA	PCT.	KPG	ASS	SA	SE	RE	DIGS	DPG	BS	BA	BPG
1991	17	32	17	79	.190	1.88	4	4	6	1	22	1.29	3	11	0.82

Lady Griz Profiles



9 **JENNIFER MORAN**
6-0 Senior
Outside Hitter
Spokane, Washington

Montana's lone senior this year, Jennifer Moran is one of UM's most prolific players. She is in her fourth season as a starting outside hitter for the Lady Griz.

Moran is a two-time AVCA All-Northwest selection (1990 & 1992), a three-time Big Sky all-conference selection (1989, 1990, 1992) and a two-time Big Sky all-tournament pick (1990 & 1992). She has twice been selected as Montana's Most Inspirational Player (1989 & 1992), and last season she was the Outstanding Player in the Postseason. Moran led the Lady Griz in both kills (3.38 per game) and digs (3.25 per game) in 1992, and she missed only one game. Moran was named Big Sky Athlete of the Week on October 12 after road wins over Idaho State and Boise State.

She holds the school record for kills in a single match (40 vs. Weber State, 1989), and after three years with Montana, she is fifth on UM's all-time kill list with 1,115 career kills and sixth on the dig list with 942 career digs.

Moran, who redshirted during the 1991 season, earned all-tournament honors as a sophomore at both the Washington State and Utah tournaments. She was the 1989 Big Sky co-Outstanding Freshman and Montana's Outstanding Rookie that same year.

At Shadle Park High School in Spokane, Moran led her team to two straight "3A" state titles. She was a three-time all-league selection and an all-state pick. She was also the Greater Spokane League MVP as a senior.

"Jen has a proven track record," Scott said. "She has proven herself over the years, and has received just accolade after accolade. She has earned it. She is a very intense player, and she can hit the ball very hard. She is a smart player when it comes to hitting. She can move the ball around at the right time and in off speed. She is a strong, aggressive server. She has a good jump serve as well as a good float serve. Jen understands what it takes to win. She plays very smart, and she has earned all the recognition she has received."

The Social Work major is the daughter of Michael and Dianne Moran and Bob and JoAnne Sletner, all of Spokane. She was born March 21, 1971.

SEASON	GP	KILLS	ERR	TA	PCT.	KPG	ASS	SA	SE	RE	DIGS	DPG	BS	BA	BPG
1989	94	315	135	842	.214	3.35	11	20	33	45	242	2.57	6	41	0.50
1990	108	422	195	1066	.213	3.91	9	33	28	64	336	3.11	8	27	0.32
1992	112	378	154	1004	.223	3.38	17	41	42	44	364	3.25	16	42	0.52
TOTALS	314	1115	484	2912	.217	3.55	37	94	103	153	942	3.00	30	110	0.35

3 **HIROMI OGUCHI**
5-0 Junior
Defensive Specialist
Tokyo, Japan

Hiromi (Here-O-Me) Oguchi (O-Gucci) is the second Japanese athlete to compete for the Lady Griz. She replaces Yuki Morita, who left the team to concentrate on her studies. Oguchi walked on the team last spring and is expected to make contributions this season.

Oguchi comes to Missoula via Skagit Valley College in Mt. Vernon, Wash., where she played with the Lady Cards in 1990. She helped lead her team to a 19-7 overall record and a second-place finish in the Northwest Region of the NWAACC (Northwest Athletic Association of Community Colleges). Oguchi, who played primarily back row for the Lady Cards, came to the University of Montana to study athletic training.

Oguchi played three years of volleyball at Edogawa High School in Tokyo and was team captain her senior year. She completed her high school education in 1988.

"Hiromi is a plus for us," Scott said. "She is a little more disciplined than Yuki (Morita) was. She is older and more mature, and she understands what needs to be done. I like that a lot. She has a lifestyle that is more disciplined, and she has a real high work ethic. Hiromi was a pleasant surprise for us, and it's really nice to have solid back row players."

The daughter of Hiroshi and Kiyoko Oguchi of Tokyo, Hiromi is currently studying Health & Human Performance. She was born on June 20, 1969 in Tokyo.



12 **JENNIFER PATERA**
5-6 Freshman
Setter
Havre, Montana

With a redshirt season under her belt, Jennifer Patera is ready to play the back-up setter position to junior Linde Eidenberg.

Patera was a two-time Most Valuable Player for the Havre High Blue Ponies in 1991 and 1992. She was a three-time all-conference and all-state selection, and she was named to both the 1991 and 1992 state class "A" all-tournament teams. She was Havre's all-time leading setter with nearly 1,400 career sets.

As a senior, Patera led the Blue Ponies to a 43-5 overall record and the state championship title. Two of her volleyball teammates, Brenda Naber and April Sather, are also Lady Griz. Naber is a high jumper on the UM track & field team, and Sather is a forward for the Lady Griz hoop club.

Patera earned four letters in high school in track and field and three letters in basketball. A long jumper and sprinter, she was inducted into Havre High's Hall of Fame.

"I think Jennifer will be adequate in the back-up setter's role," Scott said. "She had a year to learn the system as a redshirt, and we feel quite confident that she'll be able to back up Linde. If called upon for duty, Jennifer will be able to fill the role sufficiently."

Patera maintains a 3.8 grade-point average in Pre-Physical Therapy. The daughter of Robert and Lela Patera of Havre, she was born on June 10, 1974.

Lady Griz Profiles

1

MICHELLE PETERSON
5-5 Junior
Defensive Specialist
Missoula, Montana



One of Montana's most tenacious players, Michelle Peterson may be best known for the #1 she wears in her hair. One of two Outstanding Backcourt Players last year, "Petey" begins her fourth season with the Lady Griz. She walked on and redshirted her first season in 1990. As a freshman, she contributed 23 digs in 35 games. Last year she saw a lot more playing time, contributing 83 digs in 66 games for an average of 1.26 per game.

Peterson excelled in three sports at Big Sky High School in Missoula. She led the Eagles to two consecutive state "AA" volleyball titles as a setter, averaging 19.6 assists per game. She was a three-time all-state selection, and as a senior she was team captain, Outstanding Setter, Outstanding Server and the Most Valuable Player.

She also captained her basketball team that won back-to-back state titles in 1988 and 1989. In softball, she was the team captain and an all-state selection. In 1990, she was her team's Outstanding Outfielder and Outstanding Offensive Player.

"Petey" coached the Missoula Volleyball Club for girls ages 18 and under last year, and she is an umpire for the Missoula Amateur Softball Association (ASA). She has been umpiring softball for three years.

"Petey is our number-one back row player," Scott said. "She is the type of player you just love having in your program, because she hates to lose. She'll do anything to help the team win. When Petey first came in, she really wanted to be in the setting position, but she saw that was not where she was going to help the team the most. She was determined to do whatever she had to, and she was determined to stay here. She wanted to play Division I volleyball. So she's here, and she's just a tough nut."

The daughter of Jake and Debbie Peterson of Missoula, she was born June 20, 1972. She is a Health and Human Performance major.

SEASON	GP	KILLS	ERR	TA	PCT.	KPG	ASS	SA	SE	RE	DIGS	DPG	BS	BA	BPG
1991	35	0	0	0	.000	0.00	1	2	7	5	23	0.66	0	0	0.00
1992	66	1	0	2	.500	0.02	5	2	9	11	83	1.26	0	0	0.00
TOTALS	101	1	0	2	.500	0.00	6	4	16	16	106	1.05	0	0	0.00



15

INGA SWANSON
6-0 Sophomore
Middle Blocker
Pendroy, Montana

Montana's Outstanding Rookie last season as a true freshman, Inga Swanson came on strong in the end to fill in for the injured Karen Goff, who went down with a broken arm in the first game of the championship match of the Big Sky tournament. At the National Invitational Volleyball Championships, Swanson had 26 kills and 21 blocks, while hitting .229. She averaged 1.64 kills and 1.24 blocks in 42 games last season.

Swanson, Montana's first-ever state class "B" recruit, led her Choteau High School Bulldogs to four consecutive state titles. She was a three-time all-conference and all-state selection and the 1992 team MVP. She captained her team as a junior and a senior, and she earned the Most Improved Player award as a sophomore.

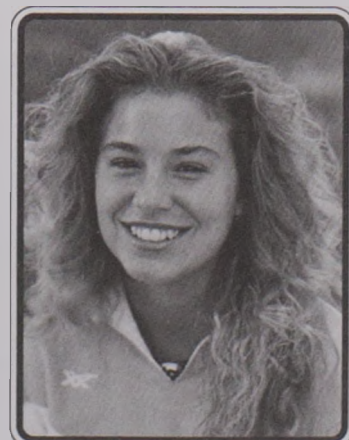
"I am really pleased with Inga's progress," Scott said. "She is a very intelligent young lady. She is a 4.0 student, and she just has a real high work ethic. She wants to be on the court. She wants to help the team win. She has had a tremendous winning tradition throughout her career, and it shows. Right now our middle blockers are our strength. We put a lot of pressure on our opponents last year by making them aware of our middle blockers, and Inga fits in real well there."

Born on December 26, 1973, Inga is the daughter of Larry and Bev Swanson of Pendroy. She had a perfect 4.0 grade-point average in general studies last year.

SEASON	GP	KILLS	ERR	TA	PCT.	KPG	ASS	SA	SE	RE	DIGS	DPG	BS	BA	BPG
1992	42	69	34	238	.147	1.64	1	9	13	8	39	0.93	11	41	1.24

6

SHERI VINION
6-0 Sophomore
Outside Hitter
Missoula, Montana



As a redshirt freshman last year, Sheri Vinion saw action in 34 games and averaged 1.88 kills and 1.18 digs per game. A back-up hitter behind Jennifer Moran and Sarah Hurlburt, Vinion is expected to contribute even more this season.

Vinion was a three-sport standout at Big Sky High School in Missoula. She played middle blocker/hitter under former Lady Griz coaches Wendy (Hoyt) Rigoni and Mari Brown. She averaged 11 kills and five blocks per game and helped lead the Eagles to two consecutive state "AA" titles. She garnered MVP honors as a senior and was a two-time all-state selection.

A four-year letter winner in track and field, Vinion was her team's Most Valuable Freshman in 1988. She was an all-division and all-state jumper with some of the top marks in the state. Her team won the state "AA" championship in 1990.

Vinion earned Most Valuable Player honors in basketball as a senior, when her team won the 1988 state championship title. She was a two-time all-conference and all-state selection and was the Best Defender in 1989.

"If you tested her, Sheri is probably the best pure athlete on the team," Scott said. "She is physically very strong and very explosive. She just needs to put that together with volleyball skills, and she's doing that. I think she has improved a lot in hitting, and she has a natural instinct to hit the ball down the line. She has some good blocking instincts, and she has long arms. Sheri may not stuff as many balls as Sarah might, but she is going to touch a lot of balls. She has improved in defense, serving and serve reception. Sheri came on like gang busters last spring with a higher work ethic and more maturity. She understands what it takes to play at this level."

Born on December 26, 1972, Sheri is the daughter of Marvin and Betty Vinion of Missoula. She is studying Accounting.

SEASON	GP	KILLS	ERR	TA	PCT.	KPG	ASS	SA	SE	RE	DIGS	DPG	BS	BA	BPG
1992	34	64	40	213	.113	1.88	0	1	12	10	40	1.18	1	10	0.32

Lady Griz Profiles

5

HEIDI WILLIAMS
5-11 Junior
Middle Blocker
Missoula, Montana



One of Montana's two starting middle blockers last season, Heidi Williams returns to give the Lady Griz more leadership at the net. She averaged 2.25 kills, 1.92 digs and 1.18 blocks per game in 106 games, and she was fourth in the Big Sky Conference in blocks. She was the recipient of the Outstanding Player vs. the Bobcats award, after contributing 19 kills, 10 digs and 11 blocks and hitting .531 in UM's two matches against Montana State.

Williams was the 1991 Most Improved Player for Montana after redshirting in 1990. A high jumper on the UM track and field team, she finished fifth in that event at the 1993 Big Sky Outdoor Track & Field Championships.

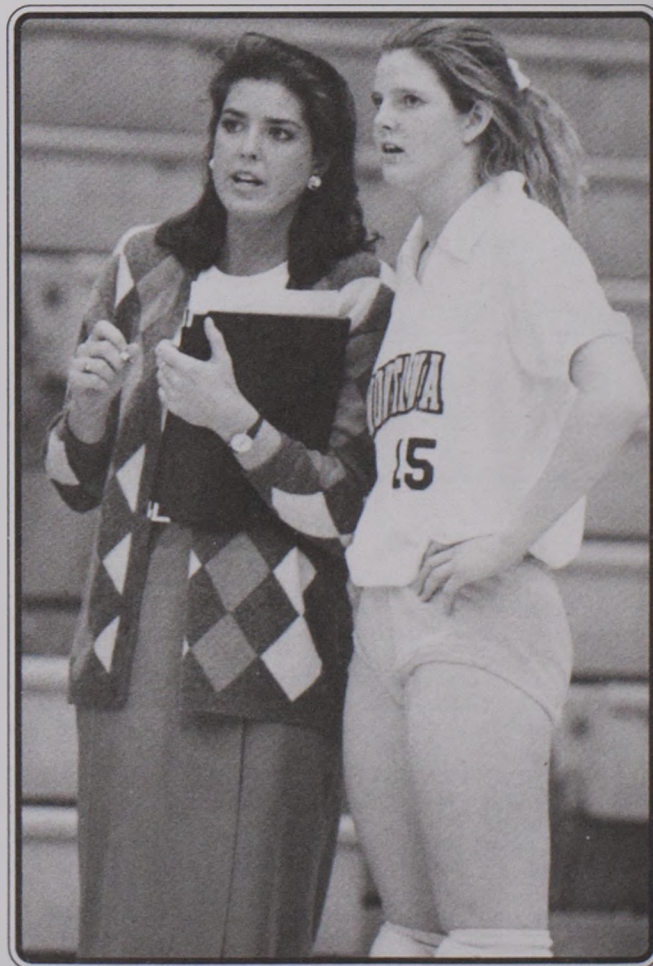
Williams was a three-sport standout at Big Sky High School in Missoula. As a senior in 1989, she was the Eagle MVP, Outstanding Hitter and Outstanding Blocker, in addition to earning all-state honors.

In 1988, she was the track team's MVP, and in 1987, she was an all-conference selection in basketball.

"Heidi has made progress in leaps and bounds from her redshirt year on through, and as last season went on, she got better and better," Scott said. "I think Heidi is starting to figure out how tough it is out there mentally, and she is doing things to make that a positive experience. She is part of that middle blocking strength of ours, and I am just really pleased with her growth."

Williams, a 1992 Big Sky all-academic selection, is a Journalism student at UM. She is the daughter of Frank Williams and Margaret Williams of Missoula. She was born on January 8, 1972.

SEASON	GP	KILLS	ERR	TA	PCT.	KPG	ASS	SA	SE	RE	DIGS	DPG	BS	BA	BPG
1991	82	117	54	331	.190	1.43	10	21	37	24	155	1.89	17	66	1.01
1992	106	238	95	596	.240	2.25	11	33	40	39	203	1.92	22	103	1.18
TOTALS	188	355	149	927	.222	1.89	21	54	77	63	358	1.90	39	169	1.11



Series Record

SCHOOL	WON	LOST	YEAR
Air Force	2	0	1983
Alabama-Birmingham	1	1	1986
Alaska	1	0	1980
Alberta	1	0	1981
Arizona	1	0	1991
Baylor	1	0	1991
Boise State	16	12	1978
Brigham Young	0	8	1978
British Columbia	0	1	1980
Cal-Berkeley	2	3	1981
Cal-Irvine	1	1	1982
Cal-Riverside	1	0	1987
Cal Poly-San Luis Obispo	0	1	1992
Cal State-Bakersfield	0	1	1991
Cal State-Long Beach	1	2	1981
Cal State-Northridge	0	1	1992
Calgary	3	3	1979
Carroll College	6	0	1979
Chapman	1	0	1986
Colorado	0	1	1990
Colorado College	1	0	1978
Colorado State	1	2	1982
Cornell	1	0	1992
Eastern Montana	4	0	1985
Eastern Washington	29	3	1978
Flathead Valley CC	4	0	1978
Florida	0	1	1992
Georgia Tech	1	0	1992
Gonzaga	15	5	1979
Houston	3	0	1982
Idaho	17	9	1978
Idaho State	15	12	1978
Illinois	2	0	1982
Illinois State	0	1	1985
Iowa State	1	0	1992
Lamar	1	0	1989
Lewis & Clark	3	0	1979
Long Beach State	0	1	1988
Louisiana State	1	1	1985
Loyola Marymount	1	0	1992
Medicine Hat	2	0	1978
Memphis State	1	0	1987
Michigan	1	0	1992
Minnesota	1	0	1986
Mississippi	1	0	1990
Missouri	1	0	1985
Montana State	27	25	1978

SCHOOL	WON	LOST	YEAR
Montana Tech	9	0	1978
Nebraska	0	2	1982
Nevada-Reno	11	2	1979
New Mexico	0	2	1983
New Mexico State	0	3	1983
Northern Arizona	14	0	1980
Northern Montana	2	2	1978
Northwest CC	1	0	1980
Northwestern	0	1	1982
Notre Dame	1	2	1989
Ohio State	1	0	1985
Oregon	3	10	1978
Oregon College of Education	1	0	1980
Oregon State	3	8	1978
Pacific	0	2	1990
Penn State	0	1	1983
Portland	2	1	1987
Portland State	2	23	1978
Purdue	0	1	1992
San Diego State	0	1	1984
San Francisco	1	0	1989
San Jose State	0	1	1982
Santa Clara	1	1	1984
Simon Fraser	2	0	1980
Southern California	0	1	1988
Southern Illinois	0	1	1981
Southwest Missouri State	1	2	1979
Southwest Texas State	1	0	1989
Spokane Falls CC	2	0	1979
St. Mary's College	1	0	1989
Texas-Arlington	0	2	1981
Texas-Austin	0	1	1989
Texas A&M	0	1	1986
Texas-El Paso	1	0	1983
Texas-San Antonio	1	0	1989
Texas Tech	1	1	1980
U.S. International	1	1	1985
Utah	7	7	1980
Utah State	7	6	1979
Utah Tech	1	0	1982
Victoria	0	2	1979
Washington	0	13	1978
Washington State	16	9	1978
Weber State	21	10	1980
Western Washington	3	5	1978
Whitworth	3	0	1978
Wyoming	3	2	1980

1992 Stats & Results

Date	Opponent	Result	Score	Attn.	Record
9-4	#SW Missouri State	L	2-3	435	0-1
9-5	#Gonzaga	L	1-3	350	0-2
9-5	#Oregon State	L	0-3	400	0-3
9-8	Cal Poly San Luis Obispo	L	2-3	413	0-4
9-11	&Georgia Tech	W	3-0	50	1-4
9-11	&Cal-Northridge	L	0-3	50	1-5
9-12	&Michigan	W	3-1	50	2-5
9-12	&Loyola Marymount	W	3-0	50	3-5
9-18	\$Purdue	L	0-3	532	3-6
9-18	\$Florida (#13)	L	0-3	300	3-7
9-19	\$Notre Dame (#22)	L	0-3	144	3-8
9-25	@ Idaho*	L	1-3	691	3-9
9-26	@ Eastern Washington*	W	3-1	924	4-9
10-1	Weber State*	W	3-3	382	5-9
10-3	Northern Arizona*	W	3-0	428	6-9
10-9	@ Idaho State*	W	3-0	800	7-9
10-10	@ Boise State*	W	3-1	650	8-9
10-16	Montana State*	W	3-0	1325	9-9
10-24	@ Gonzaga	L	0-3	284	9-10
10-30	Eastern Washington*	W	3-0	463	10-10
10-31	Idaho*	W	3-2	482	11-10
11-5	@ Northern Arizona*	W	3-1	1112	12-10
11-7	@ Weber State*	W	3-1	178	13-10
11-13	Boise State*	W	3-0	1215	14-10
11-14	Idaho State*	W	3-1	876	15-10
11-18	@ Montana State*	W	3-0	1442	16-10
11-27	%Northern Arizona	W	3-1	1067	17-10
11-28	%Idaho	L	0-3	1355	17-11
12-4	!!Cornell	W	3-0	150	18-11
12-4	!!Washington State	L	0-3	150	18-12
12-5	!!Iowa State	W	3-2	150	19-12
12-5	!!Alabama-Birmingham	L	0-3	150	19-13

—Subway Volleyball Classic (Hosted by Montana)

& —JMN Tournament (Hosted by Santa Barbara)

\$ —Mortar Board Purdue Premier (Hosted by Purdue)

% —Big Sky Championships (Hosted by Montana)

!! —National Invitational Volleyball Championships

Total Attendance=17,048

Home Attendance=9,191

Average Home=707

Average Total=533

1992 INDIVIDUAL STATISTICS

NAME	MP	GP	K	E	TA	ATK%	A	SA	SE	RE	BS	BA	DIGS
Michelle Peterson	30	66	1	0	2	.500	5	2	9	11	0	0	83
Sarah Hurlburt	28	84	175	105	616	.114	6	17	28	22	9	38	177
Yuki Morita	28	67	0	0	0	.000	2	2	5	14	0	0	82
Linde Eidenberg	32	113	134	56	346	.225	1314	53	73	1	8	45	345
Heidi Williams	31	106	238	95	596	.240	11	33	40	39	22	103	203
Sheri Vinion	14	34	64	40	213	.113	0	1	12	10	1	10	40
Jennifer Moran	32	112	378	154	1004	.223	17	41	42	44	16	42	364
Karen Goff	27	93	262	82	597	.302	10	26	51	30	30	112	184
Andi McHugh	8	17	32	17	79	.190	4	4	6	1	3	11	22
Trish Lake	32	104	336	145	896	.213	32	22	30	41	30	93	273
Inga Swanson	17	42	69	34	238	.147	1	9	13	8	11	41	39
TEAM TOTALS	32	113	1689	728	4587	.210	1402	210	309	221	130	495	1812

Key

MP	Matches Played
GP	Games Played
K	Kills
E	Errors
TA	Total Kill Attempts
ATK%	Attack Percentage
A	Assists
SA	Service Aces
SE	Service Errors
RE	Reception Errors
BS	Block Solos
BA	Block Assists
DIGS	Digs



Linde Eidenberg and Karen Goff
block Angel Leuth of Northern
Arizona.

Lady Griz Record Book

TEAM RECORDS

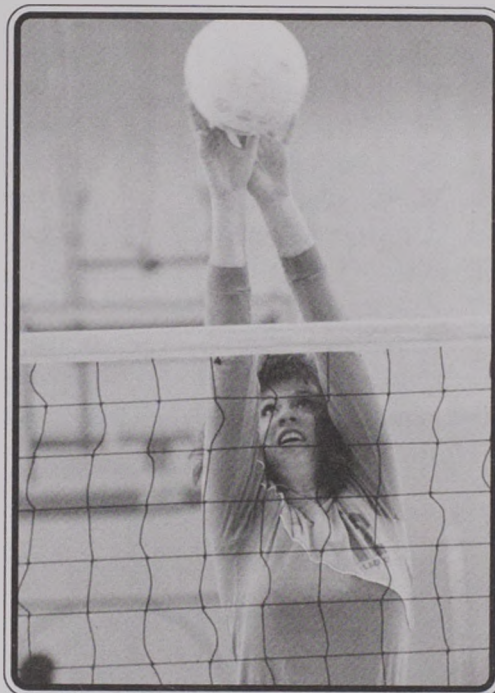
Single Match

Kills	110 vs. Weber State, 11-14-89
Kill Attempts	326 vs. New Mexico State, 9-28-86
Hitting Percentage500 vs. Washington State, 10-19-80
Passing Percentage930 vs. Washington State, 10-31-81
Service Aces	18 vs. Gonzaga, 10-10-79
Assists	99 vs. Weber State, 10-14-89
Digs	143 vs. Portland, 8-31-91
Solo Blocks	16 vs. Eastern Washington, 11-7-86
Block Assists	31 vs. Eastern Washington, 11-8-85
Total Blocks	38 vs. Gonzaga, 9-5-92 & vs. Idaho, 10-25-85

Season

Kills	1,823, 1987
Kill Average	15.57, 1991
Kill Attempts	5,030, 1985
Hitting Percentage240, 1986 & 1991
Passing Percentage691, 1991
Service Aces	399, 1979
Service Ace Average	2.01, 1988
Assists	1,616, 1985
Assist Average	13.33, 1991
Digs	2,307, 1991
Dig Average	20.78, 1991
Solo Blocks	220, 1983
Block Assists	495, 1992
Total Blocks	720, 1985
Block Average	3.34, 1992

Note: Boldface indicates a record set last season.



Colleen Jantz (1988-92) is seventh on Montana's all-time blocking list.

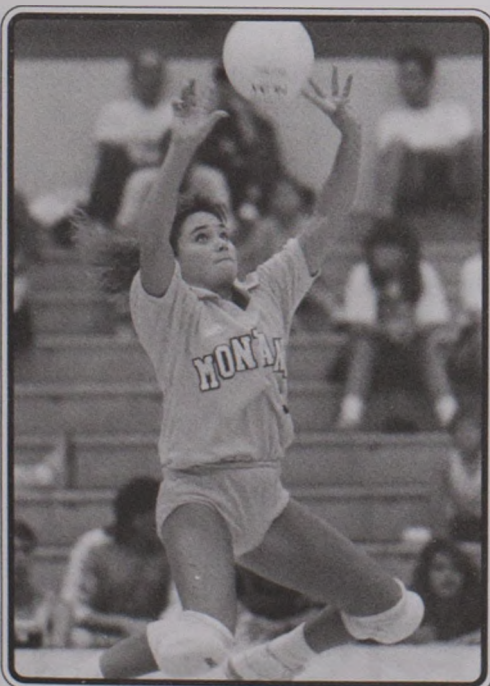
INDIVIDUAL RECORDS

Single Match

Kills	40, Jennifer Moran vs. Weber State, 10-14-89
Kill Attempts	84, Cindy Pitzinger & Allison Yarnell vs. New Mexico State, 9-28-86
Hitting Percentage ..	.826 (19-0-23) Karen Goff vs. Montana State 10-16-92
Passing Percentage ..	.941 Trish Lake vs. Southwest Missouri State 9-4-92
Service Aces	8, Several Players
Assists	98, Ann Schwenke vs. Weber State, 10-14-89
Digs	43, Kathy Young vs. Gonzaga, 10-14-91
Solo Blocks	11, Cindy Pitzinger vs. New Mexico State, 9-28-86
Block Assists	11, Colleen Jantz vs. Northern Arizona, 9-28-91
Total Blocks	15, Trish Lake vs. San Francisco, 11-10-89

Season

Kills	489, Allison Yarnell, 1987
Kill Average	4.35, Angie Bellinger, 1991
Kill Attempts	1,272, Allison Yarnell, 1987
Hitting Percentage302, Karen Goff, 1992
Passing Percentage730, Jean Cavanaugh, 1981 & Karen Goff, 1992
Service Aces	84, Jean Cavanaugh, 1979
Service Ace Average	48, Mari Brown, 1988
Assists	1,359, Wendy Hoyt, 1982
Assist Average	12.13, Ann Schwenke, 1991
Digs	554, Kathy Young, 1991
Dig Average	5.04, Kathy Young, 1991
Solo Blocks	73, Cindy Pitzinger, 1985
Block Assists	112, Nan Kuenzel, 1985 & Karen Goff, 1992
Total Blocks	206, Cindy Pitzinger, 1985
Block Average	1.54, Cindy Pitzinger, 1986



Ann Schwenke (1988-91) is Montana's all-time leading setter.

Record Book (cont'd)

CAREER LEADERS

KILLS

Name	Years	Kills
1. Allison Yarnell	1984-87	1552
2. Cindy Pitzinger	1984-87	1343
3. Angie Bellinger	1988-91	1296
4. Mary Beth Dungan	1981-84	1254
5. Jennifer Moran	1989-	1115
6. Mary Klueber	1980-83	1108
7. Pat Benson	1979-82	1033
8. Kara Price	1981-83	969
9. Jennifer Pinkerton	1987-90	904
10. Wendy Ninteman	1979-80	887

BLOCKS

Name	Years	Blocks
1. Cindy Pitzinger	1984-87	578
2. Mary Klueber	1980-83	412
3. Jennifer Pinkerton	1987-90	397
4. Pat Benson	1979-82	383
5. Laura Slanec	1982-85	372
6. Nan Kuenzel	1982-85	354
7. Colleen Jantz	1988-91	295
8. Trish Lake	1989-	293
9. Anne Tarleton	1987-90	281
10. Kara Price	1981-83	248

HITTING PERCENTAGE

Name	Years	Kills	Errors	Attempts	Pct.
1. Cindy Pitzinger	1984-87	1343	529	3092	.263
2. Allison Yarnell	1984-87	1552	544	3997	.253
3. Mary Klueber	1980-83	1108	441	2722	.245
4. Jennifer Pinkerton	1987-90	904	358	2237	.244
5. Angie Bellinger	1988-91	1296	503	3359	.236
6. Anne Tarleton	1987-90	607	239	1578	.233
7. Pat Benson	1979-82	1033	454	2578	.225
8. Mary Beth Dungan	1981-84	1254	497	3380	.224
9. Jennifer Moran	1989-	1115	484	2912	.217
10. Trish Lake	1989-	711	295	1937	.215

Note: Minimum of 1,500 attempts.

SERVICE ACES

Name	Years	Aces
1. Jean Cavanaugh	1978-81	252
2. Pat Benson	1979-82	168
3. Mary Klueber	1980-83	156
4. Mari Brown	1986-89	151
5. Mary Beth Dungan	1981-84	141
6. Ann Schwenke	1988-91	134
7. Wendy Ninteman	1978-80	133
8. Kara Price	1981-83	126
9. Cheryl Hanson	1984-87	113
10. Cindy Pitzinger	1984-87	111

> Pictured left are several of Montana's record holders:
Front Row L-R: #14 Mary McManigal, #10 Cindy Pitzinger,
 #8 Julie Hoffman. **Back Row L-R:** #13 Anne Tarleton, #12
 Allison Yarnell, #11 Mari Brown, #2 Cheryl Hanson.



Record Book (cont'd)

CAREER LEADERS (cont'd)

ASSISTS

Name	Years	Assists
1. Ann Schwenke	1988-91	4650
2. Mary Pederson	1983-84	2348
3. Wendy Hoyt	1980-82	2336
4. Michele Hall	1985-86	1697
5. Linde Eidenberg	1991-	1379
6. Mari Brown	1986-89	1355
7. Diana Bandel	1980-81	1052
8. Jan Dempsey	1984-86	1006
9. Erin Parks	1987-90	395
10. Karen McClendon	1982-83	261

Note: Assists not kept prior to 1980 season.

DIGS

Name	Years	Digs
1. Angie Bellinger	1988-91	1280
2. Mari Brown	1986-89	1249
3. Allison Yarnell	1984-87	1177
4. Kathy Young	1988-91	1040
5. Cindy Pitzinger	1984-87	1024
6. Jennifer Moran	1989-	942
7. Ann Schwenke	1988-91	910
8. Cheryl Hanson	1984-87	857
9. Cyndee Jones	1987-90	602
10. Jennifer Pinkerton	1987-90	594

Note: Digs not kept prior to 1984 season. Current players in Bold.

BIG SKY CONFERENCE AWARD WINNERS

Big Sky All-Conference Selections

1982	Pat Benson Wendy Hoyt Mary Klueber Kara Price
1983	Mary Klueber (First Team) Mary Pederson (Second Team) Laura Slanec (Honorable Mention)
1984	Mary Beth Dungan (First Team) Mary Pederson (Honorable Mention)
1985	Cindy Pitzinger (First Team) Allison Yarnell (Second Team) Nan Kuenzel (Honorable Mention)
1986	Cindy Pitzinger (First Team) Allison Yarnell (Second Team) Michelle Hall (Honorable Mention)
1987	Cindy Pitzinger (First Team) Allison Yarnell (First Team)
1988	Mari Brown (First Team) Ann Schwenke (Honorable Mention) Anne Tarleton (Honorable Mention)
1989	Mari Brown (First Team) Jennifer Moran (Honorable Mention)
1990	Jennifer Moran (First Team) Ann Schwenke (First Team) Jennifer Pinkerton (Second Team) Angie Bellinger (Honorable Mention)
1991	Ann Schwenke (First Team) Angie Bellinger (First Team) Colleen Jantz (First Team) Kathy Young (Montana)
1992	Karen Goff (First Team) Linde Eidenberg (Second Team) Jennifer Moran (Second Team)

AVCA Northwest All-Region Selections

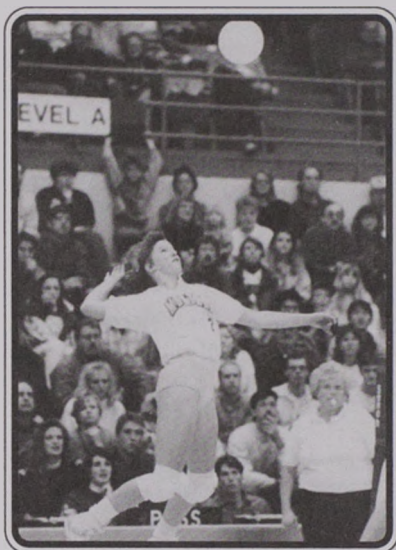
1990	Angie Bellinger (Second Team) Jennifer Moran (Second Team) Ann Schwenke (Second Team)
1991	Angie Bellinger (First Team) Colleen Jantz (Second Team) Ann Schwenke (Second Team)
1992	Linde Eidenberg (Second Team) Karen Goff (Second Team) Jennifer Moran (Second Team)

Athletes of the Week

1982	Mary Klueber Kara Price	1988	Ann Schwenke
1983	Mary Klueber Kara Price	1989	Mari Brown
1984	Mary Pederson	1990	Jennifer Pinkerton Anne Tarleton
1985	Allison Yarnell Nan Kuenzel	1991	Colleen Jantz (2) Angie Bellinger Ann Schwenke
1986	No Selections	1992	Linde Eidenberg Jennifer Moran Karen Goff
1987	Cindy Pitzinger Cheryl Hanson		

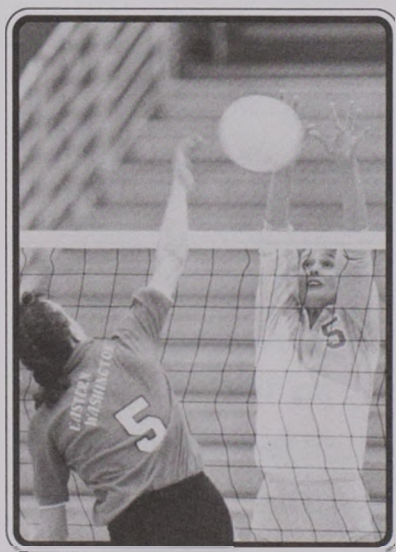


Understanding Volleyball



< Spike: An aggressive attack by the hitter, swinging the arm directly over the shoulder and contracting the heel of the hand and aggressively snapping the wrist over the top of the ball. The tipping motion, soft contact of the ball, is also considered a spike.

> Pass: This is normally the first contact after the ball passes the net on an opponent's serve. The object is to get the ball to the setter in order to set one of the hitters. The ideal position is to have a stable platform with the forearms together. The ball should recoil off the platform, hitting both arms simultaneously. A dig is similar in form to a pass, but is usually the return of a spiked ball.

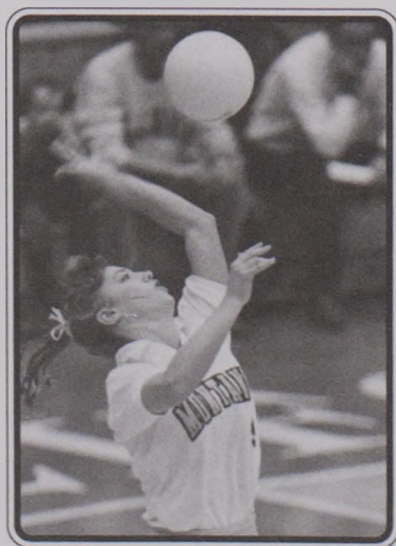


< Block: The first line of defense in volleyball. Blocking is an attempt to intercept a spiked ball on the opponent's side of the net. The blocker is allowed to reach as far over the net as possible without touching the net. The block must occur after the spiker has contacted the ball.



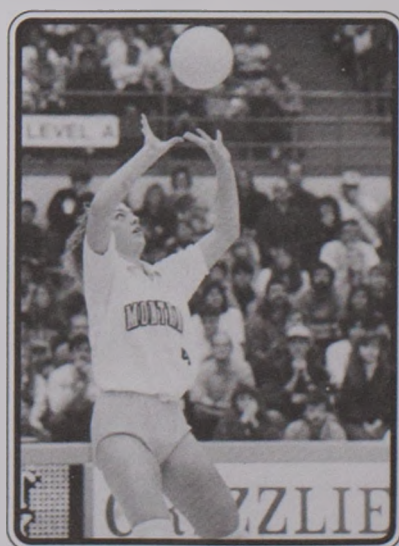
> Roll: One of the recovery skills.

This is basically a gymnastics maneuver to save the body after the ball has been contacted. The players extend onto their arm and roll over the opposited shoulder coming back to their feet. The roll is used in emergency situations when the player can't get the ball up from the normal platform stance.



< Serve: The method with which the ball is put into play. The team can only score after it has served the ball so this is a crucial offensive weapon. The most common serve in power volleyball is the knuckleball. The ball moves in an unpredictable path, making it hard to receive and pass to the setter. The ideal motion is to toss the ball high in front of the contacting shoulder and contact the ball with the heel of the hand and recoil off the ball. It is important not to snap the wrist on the serve.

> Set: An overhead pass which is put above the net for the spiker to attack. The ball is set simultaneously from the finger pads of both hands. The ball can never rest on the palms and the follow-through is directly toward the area where the ball was set.



All-Time Letter Winners

A

Aiken, Nancy (1979) Missoula, Mont.
Allred, Mindy (1985) Safford, Arizona

B

Bandel, Diana (1980-81) Corona Del Mar, Calif.
Bauer, Sheri (1985-86) Puyallup, Wash.
Bellingier, Angie (1988-89-90-91) Spokane, Wash.
Benson, Pat (1979-80-81-82) Kent, Wash.
Bjorklund, Dawn (1988-89) Electric City, Wash.
Bock, Cathy (1978-79-80) St. Joseph, Mich.
Boyster, Brenda (1979-80) Junction City, Ore.
Brink, Micki (1978) Elm Heights, NY
Brown, Mari (1986-87-88-89) Spokane, Wash.

C

Camel, Renee (1979) Ronan, Mont.
Carter, Debbie (1984-85-86) Missoula, Mont.
Cavanaugh, Jean (1978-79-80-81) Butte, Mont.
Coffee, Patty (1978) Whitefish, Mont.

D

Dempsey, Jan (1984-85-86) Spanaway, Wash.
Dungan, Mary Beth (1981-82-83-84) Kent, Wash.

E

Eidenberg, Linde (1991-92) Boring, Ore.

F

Fagan, Moira (1980-81) Westchester, Calif.
Faha, Kate (1989-90-91) Spokane, Wash.
Fitzsimmons, Val (1978) Garrison, N Dak.

G

Gilbertson, Brenda (1980-81-82-83) Milwaukie, Ore.
Goff, Karen (1991-92) Puyallup, Wash.

H

Hall, Michelle (1985-86) San Diego, Calif.
Hanson, Cheryl (1984-85-86-87) Spokane, Wash.
Hazlett, Sandy (1978) Portland, Ore.
Hoffman, Julie (1986-87-88) Missoula, Mont.
Hoover-Ray, Gypsy (1992) Missoula, Mont.
Hoyt, Wendy (1980-81-82) West Linn, Ore.
Hurlburt, Sarah (1991-92) Billings, Mont.

J

Jantz, Colleen (1988-89-90-91) Coeur d'Alene, Idaho
Johnson, Stephanie (1991) Whitefish, Mont.
Jones, Cyndee (1986-87-88-90) Boring, Ore.

K

Klueber, Mary (1980-81-82-83) Anchorage, Alaska
Kuenzel, Nan (1982-83-84-85) Missoula, Mont.
Kyle, Jodene (1982-83-84) Missoula, Mont.

L

Lake, Trish (1989-91-92) Oak Harbor, Wash.

M

MacDonald, Barbara (1982) Oregon City, Ore.
McClendon, Karen (1982-83) Pendleton, Ore.
McDonald, Terry (1978) Ronan, Mont.
McHugh, Andrea (1992) Butte, Mont.
McManigal, Mary (1985-86-87) Yakima, Wash.
Montgomery, Dede (1979) Portland, Ore.
Moran, Jennifer (1989-90-92) Spokane, Wash.
Morita, Yuki (1992) Kobe, Japan

N

Ninteman, Wendy (1978-79-80) La Jolla, Calif.

O

Opstad, Vicki (1984-85) San Luis Obispo, Calif.

P

Parks, Erin (1986-88-89-90) Missoula, Mont.
Pederson, Mary (1983-84) Medical Lake, Wash.
Peterson, Hester (1978-79) Sacramento, Ore.
Peterson, Michelle (1991-92) Missoula, Mont.
Pinkerton, Jennifer (1987-88-89-90) Canyon Country, Calif.
Pitzinger, Cindy (1984-85-86-87) Puyallup, Wash.
Price, Kara (1981-82) Richland, Wash.
Price, Kelly (1984) Missoula, Mont.
Pruim, Nicole (1988) Castle Rock, Colo.

R

Rais, Angie (1986) Anchorage, Alaska
Ruud, Kris (1978-79) Fremont, Nebr.

S

Schwenke, Ann (1988-89-90-91) Coeur d'Alene, Idaho
Shockley, Libby (1979-80-81) Richland, Wash.
Slanec, Laura (1982-83-84-85) North Riverside, Ill.
Stewart, Janet (1983) Kent, Wash.
Swanson, Inga (1992) Pendroy, Mont.
Swisher, Anne (1978-79) La Jolla, Calif.

T

Tarleton, Anne (1987-88-89-90) Littleton, Colo.

V

Vinion, Sheri (1992) Missoula, Mont.

W

Williams, Heidi (1991-92) Missoula, Mont.

Y

Yarnell, Allison (1984-85-86-87) Spokane, Wash.
Young, Kathy (1988-89-90-91) Missoula, Mont.

Z

Ziemba, Carol (1983-84) Ashland, Ore.

All-Time Results

1978

Head Coach: Dick Scott
Overall Record: 14-27

DATE	OPPONENT	RESULTS
10-6	#Northern Montana	L 0-3
10-6	#Flathead Valley CC	W 3-0
10-7	#Medicine Hat College	W 3-0
10-7	#Medicine Hat College	W 3-1
10-7	#Northern Montana	L 1-3
10-10	Flathead Valley CC	W 3-0
10-11	Montana Tech	W 3-0
10-20	\$Washington State	L 0-2
10-20	\$Portland State	L 0-2
10-20	\$Washington	L 0-2
10-20	\$Oregon State	L 0-2
10-21	\$Montana State	L 1-2
10-21	\$Oregon	L 0-2
10-21	\$Western Washington	L 1-2
10-27	%Boise State	W 2-1
10-27	%Idaho State	L 0-2
10-28	%Brigham Young J.V.	L 0-2
10-28	%Colorado College	W 2-1
10-28	%Flathead Valley CC	W 2-0
11-3	& Washington State J.V.	W 2-0
11-3	& Whitworth #B	W 2-0
11-3	& Montana State	L 0-2
11-4	& Idaho	L 0-2
11-4	& Eastern Washington	W 2-1
11-10	*Montana State	L 0-2
11-10	*Oregon	L 1-2
11-10	*Washington State	L 0-2
11-11	*Oregon State	L 1-2
11-11	*Western Washington	L 1-2
11-11	*Washington	L 0-2
11-11	*Portland State	L 0-2
11-17	@ Western Washington	L 1-3
11-18	+Edmonds CC	W 3-1
11-18	+Western Washington	W 3-0
11-18	+Has Beens Club Team	W 3-1
11-18	+Western Washington	L 2-3
11-24	!Washington State	L 0-2
11-24	!Western Washington	L 0-2
11-24	!Portland State	L 0-2
11-24	!Oregon State	L 0-2
11-24	!Montana State	L 1-2

#--Northern Montana Invitational
\$--ALAW Division I Tournament
(Hosted by Montana State)
%--Idaho State Invitational
&--Eastern Area Tournament
(Hosted by Washington State)
*--ALAW Division I Tournament
(Hosted by Washington)
+--Western Washington Invitational
!--NCWSD Region 9 Play
(Hosted by Oregon State)

1979

Head Coach: Dick Scott
Overall Record: 21-25-2

DATE	OPPONENT	RESULTS
9-21	#Lewis & Clark	W 2-0
9-21	#Idaho State	W 2-1
9-22	#Idaho	L 0-2
9-22	#Spokane Falls CC	W 2-0
9-28	\$Gonzaga	L 1-2
9-28	\$Whitworth	W 2-0
9-29	\$Western Washington	W 2-0
9-29	\$Spokane Falls CC	W 2-1
9-29	\$Eastern Washington	W 2-1
10-5	%Flathead Valley CC	W 2-0
10-5	%Carroll College	W 2-0
10-5	%Montana Tech	W 2-0
10-5	%Northern Montana	L 1-2
10-6	%Northern Montana	W 2-0
10-6	%Montana State	L 0-2
10-6	%Washington State	W 2-1
10-10	@ Gonzaga	W 3-1
10-12	& Oregon State	T 1-1
10-12	& Simon Fraser	T 1-1
10-12	& Victoria	L 0-2
10-13	& Washington	L 0-2
10-13	& Idaho	W 2-0
10-13	& Eastern Washington	W 2-0
10-13	& Nevada-Reno	W 2-0
10-17	@ Montana State	L 0-3
10-19	*Washington State	L 1-3
10-19	*Washington	L 2-3
10-19	*Oregon	W 3-0
10-20	*Oregon State	L 0-3
10-20	*Portland State	L 0-3
10-24	Montana State	L 0-3
11-2	+Calgary	L 0-2
11-2	+Southwest Missouri St.	L 0-2
11-3	+Portland State	L 0-2
11-3	+Utah State	L 1-3
11-3	+Washington	L 2-3
11-8	Washington State	W 3-1
11-9	!Portland State	L 0-3
11-9	!Oregon	L 0-3
11-10	!Montana State	L 0-3
11-11	!Oregon State	L 1-3
11-12	!Washington	L 0-3
11-12	!Washington State	W 3-2
11-16	##Washington State	W 3-1
11-17	##Montana State	L 1-3
11-22	\$\$Montana State	L 2-3
11-22	\$\$Washington State	W 3-0
11-23	\$\$Oregon	L 0-3

#--Idaho Invitational
\$--Whitworth Invitational
%--Montana Invitational
&--Portland State Invitational
*--Division I East-West Tournament
(Hosted by Washington)
+--Montana State Invitational
!--Division I East-West Matches
(Hosted by Montana)
##--Division I East Triangular
(Hosted by Montana)

\$\$--ALAW Regional Championships
(Hosted by Oregon)

1980

Head Coach: Dick Scott
Overall Record: 22-22
ALAW Region 9 Record: 3-9, 5th

DATE	OPPONENT	RESULTS
9-18	Weber State	W 3-1
9-19	#Northwest CC	W 3-0
9-20	#Montana State Gold	W 3-0
9-20	#Eastern Washington	W 3-1
9-20	#Montana State	L 0-3
9-25	\$Texas Tech	W 3-0
9-25	\$Brigham Young	L 0-3
9-26	\$Northern Arizona	W 3-0
9-26	\$Weber State	L 0-3
9-26	\$Idaho State	W 3-1
9-27	\$Utah	L 1-3
10-1	Carroll College	W 3-0
10-8	@ Eastern Washington	W 3-1
10-10	%Portland State	L 0-3
10-10	%Western Washington	W 3-0
10-10	%Washington State	W 3-0
10-11	%Arizona	W 3-0
10-11	%Oregon State	W 3-0
10-11	%Oregon	L 0-3
10-16	Washington State*	W 3-0
10-17	Washington*	L 1-3
10-17	Portland State*	L 2-3
10-18	@ Oregon*	L 1-3
10-19	@ Oregon State*	W 3-1
10-25	& British Columbia	L 0-3
10-26	& Nevada	W 3-0
10-26	& Oregon...Education	W 3-0
10-26	& Victoria	L 0-3
10-26	& Portland State*	L 0-3
10-26	& San Francisco	W 3-0
10-30	Montana State*	L 0-3
10-31	+Utah	L 1-3
11-1	+Wyoming	W 3-2
11-1	+Montana State*	L 0-3
11-1	+Calgary	W 3-2
11-7	@ Oregon*	L 2-3
11-7	@ Oregon State*	W 3-0
11-8	@ Washington	L 0-3
11-8	@ Portland State	L 0-3
11-12	Eastern Washington	W 3-1
11-14	Washington State*	L 2-3
11-15	Montana State*	L 0-3
11-21	!!Oregon	L 1-3
11-22	!!Montana State	L 1-3

#--Montana State Invitational
\$--Brigham Young Invitational
%--Portland State Invitational
*--ALAW Region 9 Match
&--Portland State Invitational II
&--Portland Tournament
+--Calgary Tournament
!--ALAW Region 9 Championships

All-Time Results (cont'd)

1981

Head Coach: Dick Scott
Overall Record: 24-17
AIAW Region 9 Record: 4-2, 2nd

DATE	OPPONENT	RESULTS
9-18	#Lewis & Clark State	W 2-0
9-18	#Whitworth	W 2-0
9-18	#Whitman	W 2-0
9-18	#Gonzaga	W 2-0
9-19	Carroll College	W 2-0
9-19	Idaho	W 2-1
9-19	Washington State	L 1-2
9-24	\$Texas-Arlington	L 1-2
9-24	\$Weber State	W 2-0
9-24	\$Cal State-Long Beach	L 0-2
9-25	\$Southern Illinois	L 0-3
9-25	\$Brigham Young II	W 3-0
10-1	Washington State*	W 3-0
10-2	%Idaho	W 3-0
10-2	%Weber State	W 3-0
10-3	%Calgary	L 1-3
10-3	%Idaho	W 3-0
10-8	Oregon State	L 1-3
10-9	Portland State*	L 0-3
10-15	Oregon	W 3-2
10-16	Washington	L 1-3
10-22	@ Montana State*	W 3-2
10-23	& Montana State	L 1-2
10-23	& California	W 2-0
10-23	& Alberta	W 2-0
10-24	& California	W 3-1
10-24	& Montana State	L 1-3
10-24	& California	L 1-3
10-28	Montana State*	W 3-0
10-30	@Eastern Washington	W 3-1
10-31	@Washington State*	W 3-0
11-4	Carroll College	W 3-0
11-5	Eastern Washington	W 3-0
11-11	@ Oregon	L 2-3
11-12	@ Oregon State	L 0-3
11-13	@ Portland State*	L 1-3
11-14	@ Washington	L 2-3
11-20	!!Montana State	L 0-3
11-20	!!Washington State	W 3-0
11-21	!!Montana State	W 3-1
11-21	!!Portland State	L 0-3

#--Idaho Invitational
\$--Brigham Young Invitational
%--Glacier Invitational
(Hosted by Montana)
*--AIAW Region 9 Match
&--Invitational University Cup
(Hosted by Montana State)
!---AIAW Region 9 Division I Championships
(Hosted by Portland State)

1982

Head Coach: Dick Scott
Overall Record: 21-18
Mountain West Record: 10-4, 2nd

DATE	OPPONENT	RESULTS
9-10	#Illinois	W 2-1

9-10	#Nebraska	L 0-2
9-10	#Montana State	W 3-0
9-11	#Wyoming	L 0-3
9-11	#Illinois	W 3-0
9-17	@ San Jose State	L 1-3
9-18	\$California	L 1-3
9-19	\$Northwestern	L 0-3
9-21	@ Utah	L 0-3
9-22	@ Utah State	L 0-3
9-23	%California-Irvine	W 2-1
9-23	%Colorado State	W 2-1
9-23	%Houston	W 2-0
9-24	%Utah Tech	W 2-0
9-24	%Brigham Young	L 1-2
9-25	%Utah State	W 3-0
9-25	%California	L 2-3
9-25	%Portland State	L 0-3
9-30	Idaho*	W 3-0
10-2	Eastern Washington*	W 3-0
10-7	@ Boise State*	W 3-0
10-9	@ Portland*	L 0-3
10-15	@ Weber State*	L 1-3
10-16	@ Idaho State*	W 3-2
10-21	Montana State*	W 3-1
10-22	@ Idaho*	W 3-2
10-23	@ Eastern Washington*	W 3-0
10-29	Boise State*	L 0-3
10-30	Portland State*	L 1-3
11-4	Utah State	L 1-3
11-5	Eastern Washington*	W 3-1
11-5	Utah	L 2-3
11-5	& Utah State	W 3-2
11-5	& Utah	L 2-3
11-12	Idaho State*	W 3-0
11-13	Weber State*	W 3-0
11-20	Montana State*	W 3-1
11-26	+Weber State	W 3-1
11-27	+Portland State	L 0-3

#--Wyoming Classic
\$--California Classic
(Hosted by Cal-Berkeley)
%--Brigham Young Preview Invitational
*--Mountain West Conference Match
&--Glacier Invitational
(Hosted by Montana)
+--Mountain West Championships
(Hosted by Portland State)

1983

Head Coach: Dick Scott
Overall Record: 25-10
Mountain West Record: 10-4, 2nd

DATE	OPPONENT	RESULTS
9-16	#New Mexico State	L 2-3
9-16	#Air Force	W 3-2
9-17	#Texas-El Paso	W 3-0
9-17	#New Mexico	L 0-3
9-17	#Air Force	W 3-2
9-22	\$Utah	L 1-2
9-22	\$Cal State-Long Beach	W 2-1
9-23	\$Penn State	L 0-2
9-23	\$Houston	W 2-1
9-24	\$Wyoming	W 2-1

9-24	\$Oregon	W 2-0
9-24	\$Cal-Irvine	L 0-2
9-29	@ Utah State	W 3-1
9-30	@ Idaho State*	W 3-1
10-1	@ Weber State*	W 3-1
10-6	@ Gonzaga	W 3-0
10-7	@ Eastern Washington*	W 3-1
10-8	@ Idaho*	W 3-2
10-12	@ Montana State*	W 3-2
10-14	Portland State*	W 3-2
10-15	Boise State*	W 3-2
10-20	Calgary	W 3-1
10-21	%Calgary	W 3-0
10-21	%Montana State	W 3-0
10-22	%Montana State All-Stars	W 3-1
10-22	%Montana State	W 3-1
10-28	Weber State*	W 3-1
10-29	Idaho State*	W 3-0
11-3	@ Portland State*	L 1-3
11-5	@ Boise State*	L 1-3
11-9	Montana State*	L 2-3
11-11	Eastern Washington*	W 3-1
11-12	Idaho*	L 1-3
11-18	!!Montana State	L 2-3
11-18	!!Boise State	W 3-0

#--Lobo Invitational
(Hosted by New Mexico State)
\$--Brigham Young Preview Invitational
*--Mountain West Conference Match
%--Glacier Invitational
(Hosted by Montana)
!---Mountain West Championships
(Hosted by Portland State)

1984

Head Coach: Dick Scott
Overall Record: 14-22
Mountain West Record: 7-7, 4th

DATE	OPPONENT	RESULTS
9-7	#Washington	L 2-3
9-7	#Montana State	W 3-0
9-8	#Utah	L 1-3
9-8	#Montana State	L 2-3
9-13	\$Brigham Young	L 0-3
9-13	\$San Diego State	L 0-3
9-14	\$California	L 0-3
9-14	\$Utah	W 3-2
9-15	\$New Mexico	L 1-3
9-20	%Washington	L 1-2
9-20	%Southwest Missouri St.	W 0-2
9-21	%Utah	L 1-2
9-21	%Idaho	L 1-2
9-22	%Washington State	W 2-0
9-22	%Utah	L 0-2
9-28	Idaho*	L 1-3
9-29	Eastern Washington*	W 3-0
10-4	@ Boise State*	L 0-3
10-6	@ Portland State*	L 1-3
10-12	@ Idaho State*	L 1-3
10-13	@ Weber State*	W 3-2
10-16	Montana State*	W 3-1
10-19	& Calgary	L 0-3
10-19	& Santa Clara	L 0-3

All-Time Results (cont'd)

10-20	& Montana Tech	W 3-1
10-20	& Montana Tech	W 3-0
10-26	Portland State*	L 0-3
10-27	Boise State*	W 3-2
10-30	@ Montana State*	L 0-3
11-2	@ Eastern Washington*	W 0-3
11-3	@ Idaho*	L 0-3
11-4	@ Washington State	W 3-2
11-9	Weber State*	W 3-2
11-10	Idaho State*	W 3-2
11-16	!!Portland State	L 0-3
11-17	!!Montana State	L 0-3

#--Domino's Pizza Invitational
(Hosted by Montana State)

\$--San Diego State Invitational

%--Brigham Young Preview Invitational

*--Mountain West Conference Match

&--Glacier Invitational

(Hosted by Montana)

!!--Mountain West Championships

(Hosted by Portland State)

1985

Head Coach: Dick Scott

Overall Record: 22-15

Mountain West Record: 8-6, 2nd

DATE	OPPONENT	RESULTS
9-11	@ Eastern Montana	W 3-0
9-13	#U.S.International	W 3-2
9-13	#Cal State-Long Beach	L 0-3
9-14	#Idaho	W 3-1
9-14	#Nebraska	L 0-3
9-14	#Wyoming	L 1-3
9-15	@ Colorado State	L 1-3
9-17	@ Utah State	W 3-0
9-19	\$Washington State	W 3-1
9-19	\$Nevada	W 3-0
9-19	\$Brigham Young	L 0-3
9-20	\$Ohio State	W 3-2
9-20	\$Illinois State	L 0-3
9-21	\$New Mexico State	L 1-3
9-21	\$Weber State	L 1-3
9-27	%Missouri	W 3-1
9-27	%Houston	W 3-0
9-28	%Eastern Washington	W 3-0
9-28	%Louisiana State	W 3-2
10-4	@ Montana State*	W 3-0
10-5	Montana Tech	W 3-0
10-8	Gonzaga	W 3-0
10-11	Portland State*	W 3-2
10-12	Boise State*	W 3-1
10-18	Weber State*	W 3-1
10-19	Idaho State*	W 3-1
10-25	@ Idaho*	W 3-2
10-26	@ Eastern Washington*	W 3-2
11-1	@ Idaho State*	L 2-3
11-2	@ Weber State*	L 2-3
11-6	Montana State*	L 2-3
11-8	Eastern Washington*	W 3-2
11-9	Idaho*	L 2-3
11-14	@ Boise State*	L 0-3
11-16	@ Portland State*	L 0-3
11-22	!!Idaho State	W 3-0

11-23	!!Portland State	L 1-3
-------	------------------	-------

#--Wyoming Invitational

\$--Brigham Young-Pepsi Invitational

%--Houston Invitational

*--Mountain West Conference Match

!!--Mountain West Championships

(Hosted by Portland State)

1986

Head Coach: Dick Scott

Overall Record: 21-11

Mountain West Record: 8-4, 2nd

DATE	OPPONENT	RESULTS
9-8	Northern Montana	W 3-0
9-10	@ Washington State	W 3-0
9-11	@ Lewis-Clark State	W 3-1
9-12	@ Gonzaga	W 3-2
9-18	#Utah State	L 0-3
9-18	#Minnesota	W 3-2
9-19	#Chapman	W 3-0
9-19	#Brigham Young	L 0-3
9-20	#Utah	W 3-2
9-24	Carroll College	W 3-1
9-26	\$Utah	W 3-0
9-27	\$Alabama-Birmingham	W 3-0
9-27	\$New Mexico State	L 1-3
10-3	%Louisiana State	L 1-3
10-3	%Colorado State	L 0-3
10-4	%Texas A&M	L 0-3
10-7	Montana Tech	W 3-0
10-10	Idaho State*	L 1-3
10-11	Weber State*	W 3-0
10-16	Gonzaga	W 3-1
10-18	@ Boise State*	W 3-2
10-21	Montana State*	W 3-1
10-24	Idaho*	W 3-0
10-25	Eastern Washington*	W 3-1
10-31	@ Weber State*	W 3-0
11-1	@ Idaho State*	L 0-3
11-7	@ Eastern Washington*	L 1-3
11-8	@ Idaho*	W 3-0
11-12	@ Montana State*	W 1-3
11-14	Boise State*	L 1-3
11-21	!!Boise State	W 3-0
11-22	!!Idaho State	L 1-3

#--Brigham Young Invitational

\$--New Mexico State Tournament

%--Colorado State Invitational

*--Mountain West Conference Match

!!--Mountain West Championships

(Hosted by Idaho State)

1987

Head Coach: Dick Scott

Overall Record: 23-10

Mountain West Record: 11-5, 2nd

DATE	OPPONENT	RESULTS
9-4	#Portland	W 3-1
9-4	#U.S.International	L 2-3
9-5	#Utah	W 3-0

9-5	#Gonzaga	W 3-0
9-9	Carroll College	W 3-0
9-12	@ Gonzaga	W 3-1
9-16	@ Utah State	L 2-3
9-17	\$Memphis State	W 3-1
9-17	\$Weber State	W 3-1
9-18	\$Washington State	L 0-3
9-18	\$Texas-Arlington	L 2-3
9-19	\$California-Riverside	W 3-0
9-19	\$Eastern Washington	W 3-1
9-21	Eastern Montana	W 3-1
9-24	@ Nevada*	W 3-2
9-26	@ Northern Arizona*	W 3-2
10-2	Idaho*	W 3-1
10-3	Eastern Washington*	W 3-1
10-9	@ Boise State*	L 0-3
10-10	@ Idaho State*	L 2-3
10-12	@ Weber State*	L 0-3
10-14	Montana Tech	W 3-0
10-17	Montana State*	W 3-0
10-23	Nevada*	W 3-1
10-24	Northern Arizona*	W 3-0
10-30	@ Idaho*	W 3-1
10-31	@ Eastern Washington*	W 3-1
11-6	Weber State*	W 3-1
11-7	Boise State*	W 3-1
11-9	Idaho State*	L 2-3
11-14	@ Montana State*	L 2-3
11-19	!!Weber State	W 3-0
11-20	!!Idaho State	L 1-3

#--Idaho State Invitational

\$--Brigham Young Invitational

*--Mountain West Conference Match

!!--Mountain West Championships

(Hosted by Idaho State)

1988

Head Coach: Dick Scott

Overall Record: 16-10

Big Sky Record: 12-4, 3rd

DATE	OPPONENT	RESULTS
9-2	#Washington	L 0-3
9-3	#Portland State	L 1-3
9-3	#Gonzaga	W 3-1
9-9	\$Utah	W 3-1
9-9	\$Southern California	L 0-3
9-10	\$Texas Tech	L 1-3
9-10	\$Long Beach State	L 1-3
9-13	Gonzaga	W 3-2
9-15	@ Northern Arizona*	W 3-2
9-17	@ Nevada*	W 3-0
9-19	Eastern Montana	W 3-0
9-23	Idaho*	W 3-2
9-24	Eastern Washington*	W 3-1
9-29	@ Boise State*	L 0-3
10-1	@ Weber State*	L 0-3
10-6	Idaho State*	W 3-0
10-8	@ Montana State*	W 3-2
10-15	Montana State*	W 3-1
10-21	@ Eastern Washington*	W 3-2
10-22	@ Idaho*	W 3-2
10-28	Nevada*	W 3-2
10-29	Northern Arizona*	W 3-2

All-Time Results (cont'd)

11-4	Weber State*	L 2-3
11-5	Boise State*	L 0-3
11-12	@ Idaho State*	W 3-2
11-18	!!Weber State	L 0-3

#--Gonzaga Invitational

\$--Long Beach State Invitational

*--Big Sky Conference Match

!!--Big Sky Championships

(Hosted by Boise State)

1989

Head Coach: Dick Scott

Overall Record: 21-10

Big Sky Record: 12-4, 3rd

DATE	OPPONENT	RESULTS
9-1	\$Southwest Texas State	W 0-3
9-2	\$Lamar	W 3-1
9-2	\$Texas	L 0-3
9-3	\$Texas-San Antonio	W 3-0
9-6	Montana Tech	W 3-1
9-8	#Notre Dame	L 0-3
9-9	#Gonzaga	L 1-3
9-9	#Portland	L 0-3
9-13	Gonzaga	W 3-2
9-15	Boise State*	L 1-3
9-16	Weber State*	W 3-0
9-21	@ Northern Arizona*	W 3-2
9-23	@ Nevada*	W 3-1
9-29	Idaho*	W 3-0
9-30	Eastern Washington*	L 2-3
10-6	Idaho State*	W 3-0
10-7	Montana State*	W 3-0
10-12	@ Boise State*	L 0-3
10-13	@ Brigham Young	L 0-3
10-14	@ Weber State*	W 3-2
10-20	Nevada*	W 3-2
10-21	Northern Arizona*	W 3-0
10-26	@ Idaho State*	W 3-2
10-27	@ Utah State*	W 3-0
11-3	Eastern Washington*	L 1-3
11-4	@ Idaho*	W 3-2
11-7	@ Montana State*	W 3-0
11-10	@ San Francisco	W 3-1
11-11	St. Mary's College	W 3-1
11-13	Simon Fraser	W 3-0
11-17	!!Boise State	L 0-3

&--Southwest Texas State Invitational

#--Gonzaga Invitational

*--Big Sky Conference Match

!!--Big Sky Championships

(Hosted by Eastern Washington)

1990

Head Coach: Dick Scott

Overall Record: 24-7

Big Sky Record: 13-3, 2nd

DATE	OPPONENT	RESULTS
8-31	&Notre Dame	W 3-1
9-1	&Mississippi	W 3-1
9-1	&Washington State	W 3-2

9-7	\$Utah State	W 3-2
9-7	\$Santa Clara	W 3-0
9-8	\$Utah State	W 3-0
9-8	\$Washington State	W 3-0
9-11	@ Gonzaga	W 3-1
9-14	Eastern Washington*	W 3-0
9-15	Idaho*	W 3-0
9-18	Gonzaga	L 2-3
9-20	@ Idaho State*	L 1-3
9-21	@ Boise State*	L 0-3
9-27	@ Nevada*	W 3-0
9-29	@ Northern Arizona*	W 3-0
10-4	Montana State*	W 3-1
10-5	Idaho State*	L 1-3
10-9	Eastern Washington*	W 3-0
10-13	Utah	W 3-1
10-19	Weber State*	W 3-0
10-20	Boise State*	W 3-1
10-26	@ Idaho*	W 3-1
10-27	@ Eastern Washington*	W 3-0
11-2	@ Brigham Young	L 0-3
11-3	@ Weber State*	W 3-0
11-6	@ Montana State*	W 3-2
11-9	Northern Arizona*	W 3-0
11-10	Nevada*	W 3-0
11-16	# Boise State*	W 3-2
11-17	# Idaho State*	L 2-3
11-30	!!Pacific	L 0-3

&--Washington State Invitational

\$--Utah Invitational

*--Big Sky Conference Match

#--Big Sky Championships

(Hosted by Idaho State)

!!--NCAA First Round Match

(Hosted by Pacific)

1991

Head Coach: Dick Scott

Overall Record: 26-4

Big Sky Record: 16-0, 1st

DATE	OPPONENT	RESULTS
8-30	&Baylor	W 3-0
8-30	&Colorado	L 2-3
8-31	&Oregon	L 0-3
8-31	&Portland	W 3-2
9-6	%Wyoming	W 3-2
9-6	%Arizona	W 3-1
9-7	%Cal State-Bakersfield	L 1-4
9-11	@ Gonzaga	W 3-1
9-12	Montana Tech	W 3-1
9-19	@ Idaho State*	W 3-1
9-21	@ Boise State*	W 3-2
9-27	Nevada*	W 3-0
9-28	Northern Arizona*	W 3-2
10-4	@ Utah	W 3-1
10-5	@ Weber State*	W 3-0
10-11	@ Eastern Washington*	W 3-1
10-12	@ Idaho*	W 3-0
10-14	Gonzaga	W 3-2
10-18	@ Montana State*	W 3-1
10-25	Boise State*	W 3-1
10-26	Weber State*	W 3-0
10-31	@ Northern Arizona*	W 3-0

11-2	@ Nevada*	W 3-0
11-8	Idaho*	W 3-0
11-9	Eastern Washington*	W 3-0
11-12	Montana State*	W 3-0
11-15	Idaho State*	W 3-0
11-23	#Idaho State	W 3-0
11-24	#Boise State	W 3-1
12-6	!!Pacific	L 0-3

&--Portland Invitational

%--Arizona Invitational

*--Big Sky Conference Match

#--Big Sky Championships

(Hosted by Montana)

!!--NCAA First Round Match

(Hosted by Pacific)

1992

Head Coach: Dick Scott

Overall Record: 19-13

Big Sky Record: 13-1, 1st

DATE	OPPONENT	RESULTS
9-4	#SW Missouri State	L 2-3
9-5	#Gonzaga	L 1-3
9-5	#Oregon State	L 0-3
9-8	Cal Poly-SLO	L 2-3
9-11	&Georgia Tech	W 3-0
9-11	&Cal-Northridge	L 0-3
9-12	&Michigan	W 3-1
9-12	&Loyola Marymount	W 3-0
9-18	\$Purdue	L 0-3
9-18	\$Florida	L 0-3
9-19	\$Notre Dame	L 0-3
9-25	@ Idaho*	L 1-3
9-26	@ Eastern Washington*	W 3-1
10-1	Weber State*	W 3-0
10-3	Northern Arizona*	W 3-0
10-9	@ Idaho State*	W 3-0
10-10	@ Boise State*	W 3-1
10-16	Montana State*	W 3-0
10-24	@ Gonzaga	L 0-3
10-30	Eastern Washington*	W 3-0
10-31	Idaho*	W 3-2
11-5	@ Northern Arizona*	W 3-1
11-7	@ Weber State*	W 3-1
11-13	Boise State*	W 3-0
11-14	Idaho State*	W 3-1
11-18	@ Montana State*	W 3-0
11-27	%Northern Arizona	W 3-1
11-29	%Idaho	L 0-3
12-4	!!Cornell	W 3-0
12-4	!!Washington State	L 0-3
12-5	!!Iowa State	W 3-2
12-5	!!Alabama-Birmingham	L 0-3

#--Subway Volleyball Classic

(Hosted by Montana)

&--JMN Tournament

(Hosted by Santa Barbara)

\$--Mortar Board Purdue Premier

(Hosted by Purdue)

%--Big Sky Championships

(Hosted by Montana)

!!--National Invitational Volleyball

Championships (Kansas City, Mo.)

Lady Griz Opponents



GONZAGA — September 1

Location: Spokane, Washington
 Nickname: Bulldogs, Zags
 Facility: Charlotte Y. Martin Centre (4,000)
 Head Coach: Sean Madden
 Overall Record: 98-89, 6 Years
 Conference: West Coast
 1992 Conference Finish: 8-6, T4th
 Sports Information Director: Oliver Pierce
 SID FAX Phone: (509) 484-2830

Enrollment: 5,000
 School Colors: Blue, White & Red
 Athletic Director: Dan Fitzgerald
 Alma Mater: Pacific Lutheran, 1979
 Record at School: 98-89, 6 Years
 1992 Overall Record: 16-14
 Letter Winners/Starters Returning: 8/5
 SID Work Phone: (509) 328-4220, Ext. 6373
 SID Home Phone: n/a



PORTLAND — September 3 — Sandsnake Volleyball Classic

Location: Portland, Oregon
 Nickname: Pilots
 Facility: Chiles Center (5,000)
 Head Coach: Carl Neuburger
 Overall Record: 157-151, 9 Years
 Conference: West Coast
 1992 Conference Finish: 1-13, 8th
 Sports Information Director: Loren Wohlgemuth
 SID FAX Phone: (503) 283-7242

Enrollment: 2,600
 School Colors: Purple & White
 Athletic Director: Joe Etzel
 Alma Mater: Portland State, 1972
 Record at School: 157-151, 9 Years
 1992 Overall Record: 13-21
 Letter Winners/Starters Returning: 10/5
 SID Work Phone: (503) 283-7117
 SID Home Phone: (503) 289-9291



UTAH STATE — September 3 — Sandsnake Volleyball Classic

Location: Logan, Utah
 Nickname: Aggies
 Facility: Dee Glenn Smith Spectrum (10,270)
 Head Coach: Marlon Sano
 Overall Record: 4-27, 1 Year
 Conference: Big West
 1992 Conference Finish: 1-17, 9th
 Sports Information Director: Tim Monsell
 SID FAX Phone: (801) 750-2615

Enrollment: 16,779
 School Colors: Navy & White
 Athletic Director: Dr. E. Kaye Hart
 Alma Mater: Cal Poly-San Luis Obispo, 1979
 Record at School: 4-27, 1 Year
 1992 Overall Record: 4-27
 Letter Winners/Starters Returning: 7/3
 SID Work Phone: (801) 750-2066
 SID Home Phone: (801) 753-1987



NEW MEXICO STATE — September 4 — Sandsnake Volleyball Classic

Location: Las Cruces, New Mexico
 Nickname: Roadrunners
 Facility: Pan American Center (13,007)
 Head Coach: Gweyn Leabo
 Overall Record: First Year
 Conference: Big West
 1992 Conference Finish: 6-12, T7th
 Sports Information Director: Brian McCann
 SID FAX Phone: (505) 646-2425

Enrollment: 15,494
 School Colors: Crimson & White
 Athletic Director: Al Gonzales
 Alma Mater: New Mexico State, 1986
 Record at School: First Year
 1992 Overall Record: 14-15
 Letter Winners/Starters Returning: 5/4
 SID Work Phone: (505) 646-3929
 SID Home Phone: (505) 527-2599



UTAH — September 4 — Sandsnake Volleyball Classic

Location: Salt Lake City, Utah
 Nickname: Lady Utes
 Facility: HPER E-101 (700)
 Head Coach: Beth Launiere
 Overall Record: 40-56, 3 Years
 Conference: Western Athletic
 1992 Conference Finish: 3-11, 7th
 Sports Information Director: TBA
 SID FAX Phone: (801) 581-4358

Enrollment: 26,600
 School Colors: Crimson & White
 Athletic Director: Dr. Chris Hill
 Alma Mater: Aquinas, 1985
 Record at School: 40-56, 3 Years
 1992 Overall Record: 18-15
 Letter Winners/Starters Returning: 7/4
 SID Work Phone: (801) 581-3510
 SID Home Phone: TBA



OREGON STATE — September 10 — NIKE Collegiate Tournament

Location: Corvallis, Oregon
 Nickname: Beavers
 Facility: Gill Coliseum (10,400)
 Head Coach: Jeff Mozzochi
 Overall Record: 287-75, 9 Years
 Conference: Pacific-10
 1992 Conference Finish: 2-16, T9th
 Sports Information Director: Becky Yahn
 SID FAX Phone: (503) 737-3072

Enrollment: 14,000
 School Colors: Orange & Black
 Athletic Director: Dutch Baughman
 Alma Mater: California, 1980
 Record at School: First Year
 1992 Overall Record: 15-18
 Letter Winners/Starters Returning: 6/4
 SID Work Phone: (503) 737-3720
 SID Home Phone: (503) 758-3812



GEORGIA — September 11 — NIKE Collegiate Tournament

Location: Athens, Georgia
 Nickname: Lady Bulldogs
 Facility: PE Gym (1,500)
 Head Coach: Jim Iams
 Overall Record: 146-68, 6 Years
 Conference: Southeastern
 1992 Conference Finish: 10-4, T3rd
 Sports Information Director: Theresa Kelly
 SID FAX Phone: (706) 542-9339

Enrollment: 28,395
 School Colors: Red & Black
 Athletic Director: Elizabeth Murphey
 Alma Mater: Stanford, 1974
 Record at School: 105-43, 4 years
 1992 Overall Record: 24-9
 Letter Winners/Starters Returning: 10/6
 SID Work Phone: (706) 542-1621
 SID Home Phone: (706) 353-3142

Lady Griz Opponents



BAYLOR — September 11 — *NIKE Collegiate Tournament*

Location: Waco, Texas
 Nickname: Bears
 Facility: Ferrell Center (10,084)
 Head Coach: Tom Sonnichsen
 Overall Record: 74-125, 6 Years
 Conference: Southwest
 1992 Conference Finish: 3-7, T4th
 Sports Information Director: Julie Bennett
 SID FAX Phone: (817) 755-1369

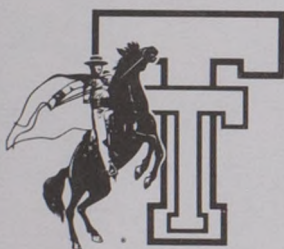
Enrollment: 12,000
 School Colors: Green & Gold
 Athletic Director: Grant Teaff
 Alma Mater: Oregon State, 1974
 Record at School: 56-83, 4 Years
 1992 Overall Record: 21-15
 Letter Winners/Starters Returning: 9/4
 SID Work Phone: (817) 755-2743
 SID Home Phone: TBA



KENTUCKY — September 17 — *Red Raider Classic*

Location: Lexington, Kentucky
 Nickname: Wildcats
 Facility: Memorial Coliseum (8,700)
 Head Coach: Fran Ralston-Flory
 Overall Record: 316-161, 13 Years
 Conference: Southeastern
 1992 Conference Finish: 10-4, 3rd
 Sports Information Director: Butch Cope
 SID FAX Phone: (606) 258-4310

Enrollment: 24,200
 School Colors: Blue & White
 Athletic Director: C.M. Newton
 Alma Mater: Michigan State, 1978
 Record at School: 209-97, 9 Years
 1992 Overall Record: 25-9
 Letter Winners/Starters Returning: 10/4
 SID Work Phone: (606) 257-3838
 SID Home Phone: (606) 253-4729



TEXAS TECH — September 18 — *Red Raider Classic*

Location: Lubbock, Texas
 Nickname: Red Raiders
 Facility: Municipal Coliseum (8,174)
 Head Coach: Mike Jones
 Overall Record: 99-31, 4 Years
 Conference: Southwest
 1992 Conference Finish: 7-3, 3rd
 Sports Information Director: Walt McAlexander
 SID FAX Phone: (806) 742-1970

Enrollment: 24,285
 School Colors: Scarlet & Black
 Athletic Director: Jeannine McHaney
 Alma Mater: Texas Tech, 1977
 Record at School: 99-31, 4 Years
 1992 Overall Record: 23-10
 Letter Winners/Starters Returning: 8/3
 SID Work Phone: (806) 742-2770
 SID Home Phone: (806) 799-8649



PEPPERDINE — September 18 — *Red Raider Classic*

Location: Malibu, California
 Nickname: Waves
 Facility: Firestone Fieldhouse (3,104)
 Head Coach: Nina Matthies
 Overall Record: 186-139, 10 Years
 Conference: West Coast
 1992 Conference Finish: 9-5, 3rd
 Sports Information Director: Michael Zapolski
 SID FAX Phone: (310) 456-4322

Enrollment: 6,800
 School Colors: Blue, Orange & White
 Athletic Director: Wayne Wright
 Alma Mater: UCLA, 1975
 Record at School: 186-139, 10 Years
 1992 Overall Record: 14-16
 Letter Winners/Starters Returning: 7/4
 SID Work Phone: (310) 456-4333
 SID Home Phone: (310) 457-4103



EASTERN WASHINGTON — September 24 & October 30

Location: Cheney, Washington
 Nickname: Eagles
 Facility: Reese Court (5,000)
 Head Coach: Pam Parks
 Overall Record: 189-188, 12 Years
 Conference: Big Sky
 1992 Conference Finish: 3-11, 7th
 Sports Information Director: Dave Cook
 SID FAX Phone: (509) 359-2828

Enrollment: 8,000
 School Colors: Red & White
 Athletic Director: John Johnson
 Alma Mater: Eastern Washington, 1974
 Record at School: 170-174, 11 Years
 1992 Overall Record: 9-21
 Letter Winners/Starters Returning: 8/4
 SID Work Phone: (509) 359-6334
 SID Home Phone: (509) 235-4672



IDAHO — September 25 & October 29

Location: Moscow, Idaho
 Nickname: Vandals
 Facility: Memorial Gym (3,000)
 Head Coach: Tom Hilbert
 Overall Record: 66-52, 4 Years
 Conference: Big Sky
 1992 Conference Finish: 11-3, 2nd
 Sports Information Director: Mike Garrity
 SID FAX Phone: (208) 885-0255

Enrollment: 14,202
 School Colors: Silver & Gold
 Athletic Director: Kathy Clark
 Alma Mater: Oklahoma, 1984
 Record at School: 66-52, 4 Years
 1992 Overall Record: 24-7
 Letter Winners/Starters Returning: 8/4
 SID Work Phone: (208) 885-0245
 SID Home Phone: (208) 883-3310



NORTHERN ARIZONA — September 30 & November 6

Location: Flagstaff, Arizona
 Nickname: Lady Jacks
 Facility: Rolle Activity Center (2,000)
 Head Coach: Kelley Silva
 Overall Record: First Year
 Conference: Big Sky
 1992 Conference Finish: 8-6, 4th
 Sports Information Director: Kim Tompkins
 SID FAX Phone: (602) 523-6793

Enrollment: 18,500
 School Colors: Blue & Gold
 Athletic Director: Kelly Patton-Woodward
 Alma Mater: Arizona, 1985
 Record at School: First Year
 1992 Overall Record: 17-11
 Letter Winners/Starters Returning: 7/3
 SID Work Phone: (602) 523-6330
 SID Home Phone: (602) 527-1380

Lady Griz Opponents



WEBER STATE — October 2 & November 4

Location: Ogden, Utah
 Nickname: Lady Wildcats
 Facility: Dee Events Center (11,500)
 Head Coach: Al Givens
 Overall Record: 150-137, 8 Years
 Conference: Big Sky
 1992 Conference Finish: 5-9, 5th
 Sports Information Director: Nan Holyoak
 SID FAX Phone: (801) 626-6490

Enrollment: 14,500
 School Colors: Purple & White
 Athletic Director: Tom Stewart
 Alma Mater: William Jennings Bryan, 1975
 Record at School: First Year
 1992 Overall Record: 6-21
 Letter Winners/Starters Returning: 7/3
 SID Work Phone: (801) 626-6012
 SID Home Phone: (801) 479-0687



BOISE STATE — October 8 & November 13

Location: Boise, Idaho
 Nickname: Broncos
 Facility: BSU Pavillion (12,500)
 Head Coach: Darlene Bailey Pharmed
 Overall Record: 278-165, 14 Years
 Conference: Big Sky
 1992 Conference Finish: 9-5, 3rd
 Sports Information Director: Lori Orr Hays
 SID FAX Phone: (208) 385-3361

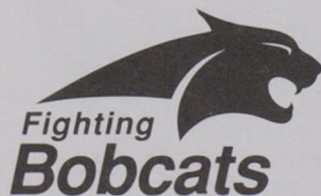
Enrollment: 13,500
 School Colors: Blue & Orange
 Athletic Director: Carol Ladwig
 Alma Mater: Cal-Irvine, 1971
 Record at School: 278-165, 14 Years
 1992 Overall Record: 14-13
 Letter Winners/Starters Returning: 4/3
 SID Work Phone: (208) 385-3438
 SID Home Phone: (208) 343-8104



IDAHO STATE — October 9 & November 12

Location: Pocatello, Idaho
 Nickname: Bengals
 Facility: Reed Gym (3,600)
 Head Coach: Alice Heberlein
 Overall Record: First Year
 Conference: Big Sky
 1992 Conference Finish: 3-11, 8th
 Sports Information Director: Dave Geringer
 SID FAX Phone: (208) 236-3659

Enrollment: 10,755
 School Colors: Black & Orange
 Athletic Director: Randy Hoffman
 Alma Mater: Idaho State, 1985
 Record at School: First Year
 1992 Overall Record: 7-21
 Letter Winners/Starters Returning: 6/2
 SID Work Phone: (208) 236-2621
 SID Home Phone: (208) 232-5336



MONTANA STATE — October 14 & November 19

Location: Bozeman, Montana
 Nickname: Bobcats
 Facility: Shroyer Gym (1,600)
 Head Coach: Carl Weissman
 Overall Record: 12-17, 1 Year
 Conference: Big Sky
 1992 Conference Finish: 4-10, 6th
 Sports Information Director: Tom Schulz
 SID FAX Phone: (406) 994-4102

Enrollment: 10,540
 School Colors: Blue & Gold
 Athletic Director: Doug Fullerton
 Alma Mater: Carlton College, 1985
 Record at School: 12-17, 1 Year
 1992 Overall Record: 12-17
 Letter Winners/Starters Returning: 6/4
 SID Work Phone: (406) 994-5130
 SID Home Phone: (406) 586-4973



WYOMING — October 15

Location: Laramie, Wyoming
 Nickname: Cowgirls
 Facility: Multi-Purpose Gym (1,000)
 Head Coach: Mike English
 Overall Record: 240-147, 11 Years
 Conference: Western Athletic
 1992 Conference Finish: 7-7, T4th
 Sports Information Director: Tim Harkins
 SID FAX Phone: (307) 766-2346

Enrollment: 11,000
 School Colors: Brown & Yellow
 Athletic Director: Paul Roach
 Alma Mater: Western Illinois, 1975
 Record at School: 111-72, 5 Years
 1992 Overall Record: 17-12
 Letter Winners/Starters Returning: 9/4
 SID Work Phone: (307) 766-2321
 SID Home Phone: (307) 742-6309



CAL-STATE NORTHRIDGE — October 22

Location: Northridge, California
 Nickname: Matadors
 Facility: The "Matadome" (3,000)
 Head Coach: John Price, Interim
 Overall Record: First Year
 Conference: Independent
 1992 Conference Finish: n/a
 Sports Information Director: Barry Smith
 SID FAX Phone: (818) 885-4762

Enrollment: 30,000
 School Colors: Red, White & Black
 Athletic Director: Robert J. Hiebert
 Alma Mater: Cal State-Northridge, 1983
 Record at School: First Year
 1992 Overall Record: 27-8
 Letter Winners/Starters Returning: 5/2
 SID Work Phone: (818) 885-3243
 SID Home Phone: (818) 990-1207



CAL POLY-SAN LUIS OBISPO — October 23

Location: San Luis Obispo, California
 Nickname: Mustangs
 Facility: Robert A. Mott Gymnasium (3,500)
 Head Coach: Craig Cummings
 Overall Record: 72-54, 4 Years
 Conference: Independent
 1992 Conference Finish: n/a
 Sports Information Director: Eric McDowell
 SID FAX Phone: (805) 756-2650

Enrollment: 14,000
 School Colors: Green & Gold
 Athletic Director: John A. McCutcheon
 Alma Mater: Cal Poly-S.L.O., 1981
 Record at School: 52-50, 3 Years
 1992 Overall Record: 22-11
 Letter Winners/Starters Returning: 6/5
 SID Work Phone: (805) 756-6531
 SID Home Phone: (805) 543-2424



1993 LADY GRIZ VOLLEYBALL SCHEDULE

Date	Opponent	Time (MST)	Date	Opponent	Time (MST)
SEPT. 1	GONZAGA	7:30 P.M.	Sept. 30	@ Northern Arizona*	8:30 p.m.
Sept. 3-4	@ Sandsnake Tourn. (Bozeman, Mont.)		Oct. 2	@ Weber State*	3:00 p.m.
	9-3 vs. Portland	2:30 p.m.	OCT. 8	BOISE STATE*	7:30 P.M.
	9-3 vs. Utah State	6:00 p.m.	OCT. 9	IDAHO STATE*	7:30 P.M.
	9-4 vs. New Mexico State	12:00 noon	Oct. 14	@ Montana State*	7:30 p.m.
	9-4 vs. Utah	6:00 p.m.	Oct. 15	Wyoming (in Bozeman)	7:30 p.m.
Sept. 10-11	@ NIKE Collegiate Tourn. (Corvallis, Ore.)		Oct. 22	@ Cal State-Northridge	8:00 p.m.
	9-10 vs. Oregon State	8:30 p.m.	Oct. 23	@ Cal Poly-San Luis Obispo	8:30 p.m.
	9-11 vs. Georgia	12:00 noon	Oct. 29	@ Idaho*	8:30 p.m.
	9-11 vs. Baylor	6:00 p.m.	Oct. 30	@ Eastern Washington*	8:00 p.m.
Sept. 17-18	@ Red Raider Classic (Lubbock, Texas)		NOV. 4	WEBER STATE*	7:30 P.M.
	9-17 vs. Kentucky	4:00 p.m.	NOV. 6	NORTHERN ARIZONA*	7:30 P.M.
	9-18 vs. Texas Tech	11:30 a.m.	Nov. 12	@ Idaho State*	7:00 p.m.
	9-18 vs. Pepperdine	4:00 p.m.	Nov. 13	@ Boise State*	7:00 p.m.
SEPT. 24	EASTERN WASHINGTON*	7:30 P.M.	NOV. 19	MONTANA STATE*	8:00 P.M.
SEPT. 25	IDAHO*	7:30 P.M.	Nov. 26-27—Big Sky Conference Championships		

*—Indicates Big Sky Conference match / HOME MATCHES IN CAPS

