

University of Montana

ScholarWorks at University of Montana

Associated Women Students Handbooks,
1919-1963

University of Montana Publications

1-1-1955

Associated Women Students Handbook, 1955-1956

Montana State University (Missoula, Mont.). Associated Women Students

Follow this and additional works at: https://scholarworks.umt.edu/aws_handbook

Let us know how access to this document benefits you.

Recommended Citation

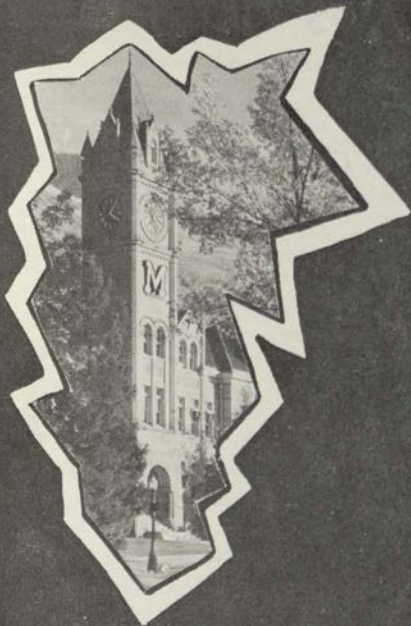
Montana State University (Missoula, Mont.). Associated Women Students, "Associated Women Students Handbook, 1955-1956" (1955). *Associated Women Students Handbooks, 1919-1963*. 15.
https://scholarworks.umt.edu/aws_handbook/15

This Handbook is brought to you for free and open access by the University of Montana Publications at ScholarWorks at University of Montana. It has been accepted for inclusion in Associated Women Students Handbooks, 1919-1963 by an authorized administrator of ScholarWorks at University of Montana. For more information, please contact scholarworks@mso.umt.edu.



**A
W
S**

**TIME-
TABLE**



Hi!

AWS TIME-TABLE

A College Handbook for College Women

EDITORS

JOAN HOFF

NORMA BEATTY

STAFF

Kathleen Harris

Kay Lund

Roberta Dixon

Sharon O'Neill

Judy Weaver

Published by

THE ASSOCIATED WOMEN STUDENTS OF
Montana State University in Missoula, Montana
1955-56

AWS Is You . . .

AWS—those three letters stand for a great part of Montana State University life. **Associated Women Students** is an organization that every woman automatically belongs to when she registers. Its purposes are many, and each one is a benefit to the members.

'Way back in 1914, the "Women's League" was formed by the women students on campus and since then the group has grown up, changed, and developed into a governing body "of the women, by the women, and for the women." To-day, the Executive Board (composed of representa-

tives from every women's living group on campus) meets every week to regulate all matters which do not fall under the jurisdiction of the faculty.

Throughout the year AWS carries out a program designed to unify women attending MSU, give more leadership opportunities for women,

to work for better living conditions for women, and to foster a living school spirit. AWS is a member of the Intercollegiate Association of Women Students, and by attending national meetings it is possible for MSU women to keep track of what other college women are doing and to exchange ideas for to better AWS and campus improvements.

But remember . . . **you are AWS**. You are its sole justification for existence and its only means of functioning beneficially. Take part in making **your** club even better.





Welcome to Montana State University and to membership in AWS. We are looking forward with much pleasure to sharing with you our university opportunities and especially our women's activities. AWS has prepared this booklet as a guide for you in your life on the campus. We wish for you a stimulating and inspirational year and shall be happy to assist you at any time.

Maurine Clow

Associate Dean of Students

University life is a new experience and one to which I am sure you are looking forward. I am pleased to have the opportunity of joining with Dr. Maurine Clow and the Associated Women Students in greeting you and wishing you success and happiness at MSU.

Harriet Miller

Acting Associate Dean of Students



Left to right: Joan Hoff, vice president; Betty Millhouse, treasurer; Darlene Forzley, president; and Luanna Page, secretary.

Hi —

On behalf of the Associated Women Students of Montana State University, it is my privilege to extend to you a most hearty and warm welcome.

We're glad that you have chosen our University and hope you will enjoy your stay here. Part of your enjoyment will stem from participation in some of the many organizations and activities offered at MSU.

But before beginning to take an active part in campus life you probably have many questions concerning the University, classes, dorm-life, and things in general that need to be answered. We hope that this handbook contains most of the answers to your questions and a few little additional tips besides.

See you this fall!

DAR FORZLEY, President,
ASSOCIATED WOMEN STUDENTS

Additional Finances

Need some money?

The **AWS Loan Fund**, instituted in 1923 at MSU, was established to provide financial aid to women students. Any girl may borrow from the fund. The loan is approved by the AWS president and the associate dean of students. There is over \$2000 in this fund and any amount up to \$200 may be borrowed at 2% interest. The rate at which this money is paid back, i.e., monthly, quarterly, etc., depends upon the individual case.

Every woman student who feels that she lacks the money to continue her college education should consider applying for this fund. It can provide the necessary stepping stone toward that ultimate goal of a sheepskin.

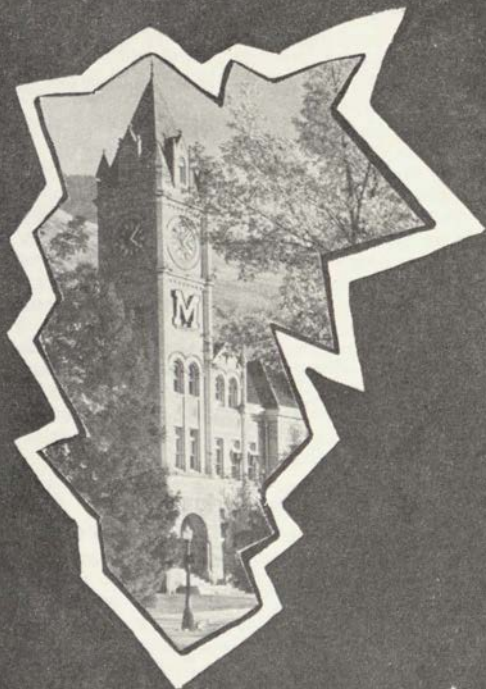
What about a scholarship?

A new scholarship just established in 1955 is the **AWS Cheadle-McKinley Memorial Scholarship**. This \$50 was awarded for the first time spring quarter '55.

Any sophomore woman student at MSU can apply; the winner is chosen by the associate dean of students, a faculty member, president of AWS and a member of the AWS Executive Board.

This new scholarship is presented by AWS in memory of Jane Cheadle and Marlene McKinley, outstanding MSU students, each of whom has died in the last five years. AWS plans to make this an annually awarded scholarship.





Time to Get
Acquainted

Why did you come to a university?

(1) To have the opportunity to make something of yourself?

(2) To obtain a career that will support you in the years to come?

(3) Because you realize that education is of high value for you now and in future years?

(4) Because you believe an education helps a woman to be a better homemaker and mother?

(5) Because you know that at a university such as MSU you will be associated with people possessing ideas, personalities, and cultures that may prove worthwhile to you?

(6) Or perhaps you came just to find a man and settle down . . .

Whatever your reason or reasons, no matter how they may change in the course of your stay here, only you will ever know if your reasons for coming were, in the end, fulfilled. It is left entirely up to you to gain and profit from what is offered at Montana State University.

Let's meet a few buildings . . .

Main Hall is the heart of MSU. From behind its sturdy walls, built in 1897, radiate channels to all parts of the campus, the city, and the state.

Inside this building you will find various offices and departmental divisions such as the Dean of Students Office, the Business Office, the Registrar, the Public Service Division, and the Counseling Center.

Of special importance to both the old and new students are: (1) The Dean of Students office where the **Associate Dean of Students** (more commonly called the Dean of Women) can be found. Her office is always open to university students and she is ready to aid and offer guidance concerning campus life, both social and academic.

(2) The **Counseling Center** helps you to de-

cide about your major field and for what courses of study you are best adapted.

In addition to this counseling service, an **adviser**, usually a professor in your field of study, will be assigned to you before registration. For as long as you attend the "U" this adviser will be on hand to aid you in the selection and planning of your courses.

The rosy cheek department . . .

The **University Health Service** is maintained on campus in order to safeguard the health of the students and to furnish medical service and nursing care to those who become ill or injured during the school term. Required fees, paid at the time of registration each quarter, entitle you to the privileges of the Health Service.

Work on a new Health Center has begun, with the new construction scheduled to have four wards and three isolation rooms.

Remember, good health results not only in better grades, but also more fun.

The place to hit those books . . .

The **library** is probably your best friend on campus, whether you realize it or not. It is the ideal place for most of your studying and research work; and construction for the enlargement of the present building is underway to provide even more room to cram for those exams. It's a little confusing at first to learn just how the library "works," but able librarians and student assistants are always on hand to direct you to the book ("I just have to have or I flunk").

For fun and food . . .

The new **Lodge** has just been completed, and serves the dual role as a **Student Union** and **Food Center**. In its function as a Student Union, it

serves as a recreational and meeting center for all campus students and activities. The Grill, located in the basement, takes care of those between class snacks. The offices and council rooms for meetings are situated on the second floor. Dances can be held in the larger rooms, and a game room is located off the Grill. The rooms in the Lodge are named after some of the counties in Montana.

Meals for all residents of the dorms are served in the **Food Center**, with the exception that women students eat breakfast in the North Hall dining room. Definite schedules of meal hours are posted in all dorms. Meals, as well as "those in-betweens," may be bought in the Grill.

The churches welcome you . . .

During Orientation Week all **churches** will present an open house at the University for new students. There you can meet the church pastor, find out about your church services and the University clubs your church contacts; and besides, they will enable you to make new and interesting friends inside your church.



So, as an up-and-coming Grizzly, try to start the first Sunday here with a church service. Addresses are listed in the classified section of the telephone directory, and a map of Missoula is on the back cover. Away from home doesn't necessarily mean away from church.

On campus, students representing all religious groups and living centers participate in the **Student Christian Association**, which is open to all students. Later in the fall SCA will sponsor **Religious Emphasis Week**, at which time speakers from various denominations visit the campus and

talk to the different living groups and classes. The various church organizations include **Canterbury Club, Christian Science Organization, Lutheran Students Association, Newman Club, University Congregational Fellowship, Wesley Foundation, and Westminster Foundation.**

Courses for credit in religion are also offered in the M.S.U. curricula under the direction of the Dean of Religion.

Now here's where you stay . . .

Housing facilities for on-campus women include three residence halls: **North** and **Corbin** for freshmen, and **New Hall** for upperclass women.

These dorms are under the supervision of head residents. In the freshmen dorms, besides the house mothers, there are junior sponsors (junior women students) ready to help at any time. The sponsors give pointers on such things as the government of the dorm, study habits, social life, and other general information about living at MSU.



If you prefer to live in a co-op, the **Synadelphic House** is open to all women students whether freshmen or upperclassmen. Here expenses and housework are shared, as well as all the fun.

Sororities are open to upperclass women who choose to live in one of the six houses located off campus. Freshmen "pledges" are required to live in the dorms during their first year at MSU.

Wherever you decide to live while attending the University you will find yourself a part of an organized social unit. This process of group living which comes as a new experience in your life will not only prove profitable in later years, but be a lot of fun right now too.

The city itself . . .

Missoula, "The Garden City," is the hub of a busy and thriving community. It is the center of five great valleys and the crossroad of Western Montana. Its name is taken from the Flathead Indian term meaning "near the cold, chilling waters."



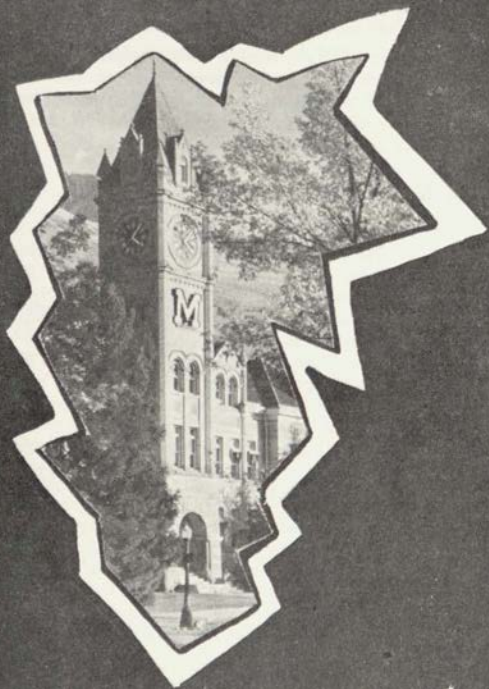
You'll find also an abundance of things to do in and around Missoula. There are many recreation and vacation

facilities. City parks, tennis courts, picnic areas, horseback riding, six theaters, two bowling alleys, and a roller skating rink offer off-campus activity. Nearby ski hills offer winter fun, while the year-round Glacier ice rink on campus can be enjoyed minus freezing temperature.

Missoula's major industries include lumber mills, construction companies, meat-packing plants, and a sugar beet factory. The regional headquarters of the U.S. and State Forest Services are also located here.

Hey Frosh!

Freshmen will be introduced officially to MSU, her buildings, facilities, fraternities and sororities, clubs, church affiliations and rules during **Orientation Week**. This starts on Sunday, a week before classes begin. It's a hectic week, with tests thrown in on top of everything else. But it is here that as a freshman you meet students from all over the state, many of whom will become your friends for more than the years spent at the University. There's an old saying, "If you can make it through Orientation Week, you can take anything." It's an important week in your life—make the most of it.



Time-Bound

Thru the years . . .

MSU has many customs and annual happenings—she calls them **traditions**—that endear her to her students. These events, proudly observed by all true Grizzlies, give college life the spice that make you remember the fun!

Just for the Cub . . .

The first tradition an incoming Grizzly cub meets is **Orientation Week**—a time of making friends, having fun, getting acquainted with the campus, and incidentally, taking tests. AWS, to which every woman on campus belongs, helps cubs tremendously in this baffling week of transition. On one of the first nights at the "U", AWS puts on a get-acquainted party for big and little sisters, who have been writing to one another all summer. Campus organization prexies and representatives tell all about life on campus and the frosh get informed about honoraries and places to use their talent at school.

On **Sob Sunday**, the second Sunday away from home, AWS, in conjunction with Spur and Mortar Board, plans a tea to give homesick cubs a chance to get away from all those thoughts of home. AWS big sisters take their little sisters and help them meet the other frosh and upperclasswomen.

AWS sponsors many activities throughout the year—one at Easter time—an egg hunt for the faculty children, and another called **Women's Day**, with a luncheon and festivities honoring the women on campus. Any more mature grizzly will tell a cub that AWS and its committees help make life at MSU fun and worthwhile, and that it is the organization to depend on for help in solving the mysteries of life on campus!

All frosh scramble up Mt. Sentinel some afternoon of the week and partake in **Painting the "M"**. Many, many buckets of white wash cover the "M", and somehow manage to cover the coeds and fellas too. Spurs and Bear Paws are on hand to guide the activity and give out refreshments to the hard-working frosh when it is all done. All during the week freshmen will be identified by their **Frosh Beanies** which they wear at **all** times.



Every fall the freshmen paint the **Victory Bell** so that it will be in proper condition for every Grizzly victory. It is the responsibility of the Freshmen to see that the glad tidings ring out after every MSU triumph.

Everybody pitches in . . .

Homecoming, the weekend honoring alums, boasts a football game, a homecoming queen, and a big parade with floats sponsored by all the houses and dorms. A **Bonfire** (freshman sponsored) on Friday night climaxes a big Grizzly pep rally.

On Fridays before big MSU events, **Convocations** are usually held. Student Outside Entertainment is featured, and the whole university gathers for a worthwhile fun hour.

The Grizzly-Bobcat game, (usually won by MSU) is played in Bozeman and Missoula on alternate years, and is the high spot for rivalry between MSU and MSC. A traveling trophy is presented to the captain of the winning school's team.

All dads are honored at a football game on

Dad's Day. The dad coming the furthest for the occasion and the oldest dad are given awards.



Hello Walk is the sidewalk dedicated to friendship, where traditionally everybody greets everybody else with a friendly hello or "hi." It is the section of sidewalk from the Student Arts and Craft building to the west

entrance of the Liberal Arts building.

Annual affairs . . .

Some of the important social traditions on campus are the **Foresters Ball**, given by the woodsmen in Paul Bunyan's honor; the **Barristers Ball** where the lawyers fete J. Learned Brow; the **Nite Club Dance**, presented by the music school in a nite clubish atmosphere with a good floor show; the **Military Ball**, sponsored by the ROTC unit; and **Sadie Hawkins**, the dance the Spurs give so that every Daisy Mae on campus can catch her Lil' Abner.

We gather at Main Hall . . .



At SOS, a beloved tradition of Singing On the Steps of Main Hall, the songs of MSU led by Spurs and Bear Paws are perfected and honoraries tap their successors. SOS starts promptly at 7:30 p.m. and when the clock begins to strike eight, everyone is silent until the eighth gong is heard. Then the assembled students sing "Old College Chums," and walk away humming it, feeling happy and friendly, as the Main Hall

tower, the night, and the singing mingle to create the spirit of MSU.


And in the spring . . .

Professor William (Daddy) Aber used to have a day dedicated to him. It was a day when all MSU gathered to make the campus beautiful, partake of a barbeque, and follow the proceedings of High Court, but modern **Aber Day** got to be too much for us, and **Spring Vacation** has been substituted.

Interscholastic is the weekend when Montana high school students gather at MSU to compete in athletic events, speech, dramatics and journalism. Everyone tries to show them a good time and give them a taste of university life. Mortar Board, Spurs, and Silent Sentinel tap their new members, and an all-school song festival is held.

Mighty Seniors only . . .

And when a Grizzly gets to be a senior (and only then), he is entitled to sit on **Senior Bench**, a bench donated by the class of 1910, and located just inside the right of the entrance to the oval.



On the Saturday before **Commencement**, upper-classwomen honor the graduating seniors by the **Lantern Parade**, another AWS sponsored project. The co-eds march around the oval carrying lighted lanterns while the seniors in caps and gowns, form an M in the center. "Montana My Montana" is sung from the tower of Main Hall, and MSU women respond with "Old College Chums."

Teeney, but important . . .

These then, are the traditions of MSU—these and lesser one like walking around the oval, not across it, the lawyers stealing Bertha, who is the

Foresters' prized stuffed moosehead, the band marching on the clover bowl day after day, and twirp season (The Woman is Requested to Pay). They all enrich the days spent at MSU creating memories that will live on as do the traditions themselves in the hearts of past and present students.

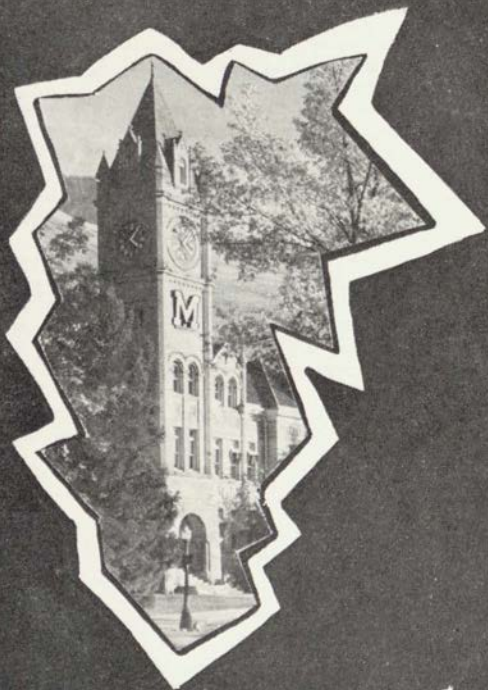
ACTIVITIES BALANCE

In the next few pages, this AWS handbook will be promoting the many activities, honoraries, and offices open to women students of MSU. But AWS would also like very much to see the women who enter as freshmen, as graduating seniors in about four years. And so, at some point extracurricular participation must be regulated, not only to keep those grade averages up, but also to ward off a severe case of ulcers or "activity fatigue."

In view of this, the Executive Board of AWS has approved the following schedule. This is a list of what are termed, "PERMANENT A" activities, and **no more than one of these positions can be held at the same time** by any woman student attending MSU. A university woman can, however, hold a "PERMANENT A" and at the same time hold any number of other student offices, committee assignments, club memberships, and various campus positions not listed here.

PERMANENT A

- President of AWS
- President of ASMSU
- Editor of Kaimin
- Business Manager of Kaimin
- Editor of Sentinel
- Business Manager of Sentinel
- Secretary of ASMSU
- Business Manager of ASMSU
- Vice President of ASMSU
- President of Spur
- All Living Group Presidents



Time Out for
Dates

Eek!—Nothing to wear . . .

What to wear? The following chart should assist you in choosing your apparel for almost every occasion that will arise.

Just a few hints first though. If you're planning to buy many new clothes before you come to MSU, remember—plan your wardrobe so that it revolves around two or three basic colors. This makes for a more stylish you and cuts down upon your expenses for matching accessories. Don't buy too much—wait until you're in the know.

If you aren't quite sure—stick to the conservative side. A plain coat can go anywhere, even for evening; so can a smart simple suit. A basic dress can be changed by scarves and beads. Plain pumps are always smart and never out of style. A raincoat and galoshes are needed. Jeans are worn only for picnics or intramural sports—NEVER downtown, which is considered across the bridge. They are correct too, at barn dances and the Foresters' Ball.

U-mm, those men . . .

Dating will be an important part of your life at MSU, and with a little common sense and a few sensible rules to follow, you can't go very wrong. Just in case you might be a little hazy on some points, here are a few hints that might come in handy.

It's not good public relations to:

1. Break a date with one man to go out with another one. The first one will certainly not appreciate it, and the second one will probably end up mistrusting you, too.

2. How about blind dates? Well, you're not taking any more of a chance than he is. Just be sure of who arranges the date, and chances are you'll be O.K.

3. When you are asked on a coke date, don't

order a banana split. What if he's only got a dime? Besides, consider your figure.

4. Be a little bit lazy. Hand him your coat, and hesitate before doors. He'll catch on, and he'll probably like it.

5. Try not to rattle on and on about the other men in your life. Your date, being reasonably normal, would probably prefer other subjects, and especially appreciate it if he could get a few words in now and then.

6. And while we're on the subject, young love will probably blossom, as young love has a habit of doing, but nothing is gained by demonstrating the fact all over campus especially on the steps of the dorms at about 1:01 a.m. Remember, you'll see him tomorrow, and anyway, the housemother would like to get a little "shut eye."

People, people, everywhere . . .

You've been meeting people all your life, and during your stay in college, you'll meet just that many more.

It's up to you to be the kind of person they want to know better, and your first impression will play a big part in this. Here are a few pointers that go a long way toward making a favorable impression on people.



What about your appearance? Extreme clothes or overdone make-up can be fatal. It's better to be on the retiring side than to attract too much of the wrong kind of attention to an out-of-place dress. Stringy, unkept hair has never been known to do anyone much good, especially socially. A girdle can do wonders for poor posture.

How do you sound? A pleasing voice and good grammar can do a lot toward making a good impression, and the language you use will help considerable, too. Profanity and slang have never been known to make many friends. It has been said that gossiping has its place, but as of yet nobody has found the right one.

Your general, well-mannered self is the most important factor in your personality. No matter how nicely you look or well you talk, you won't keep the friends you make very long unless you show them the consideration they have the right to expect.

Say it with the right words . . .

But even though you may possess all these qualities and the looks of Venus besides, you're lost if you just don't know what to say when you first meet someone. At college you'll be forever in the process of introducing "so and so" to "so and so." The most gracious form to use is, "May I present . . ." but more simply you can say, "Do you know . . ." or "I'd like you to meet . . ." or simpler still, you may just mention the two names. **Try to give some information about the people you are introducing so that the conversation will start rolling.** Nobody likes to stand like a bump on a log in utter silence.

Which name comes first?—the woman's if you are introducing members of the opposite sex, the older person's if they are of the same sex; the married woman's first if introducing her to an unmarried woman; the most important person first if he is really distinguished.

Examples:

"Miss Fair-sex, may I present Mr. Tall and Handsome."

"Mrs. Gray-hair, Miss Feather-cut."

"Dr. Forbes—do you know Miss Feather-brain?"

If you are being introduced be sure to smile and say, "How do you do?" Shaking hands seems to present a problem so here's the formula. Two women may or may not shake hands. You



usually don't offer to shake hands with a man unless you are the hostess; and your handshake should be a happy medium between a dead fish and an Amazonian strangle hold. Never refuse an extended hand.

When parting Mr. Gentleman may say, "I'm glad to have met you." If he does you may reply, "Thank you," or on special occasions, "It's been a pleasure," (if it has). However, play it cool and never express your elation first.

To Keep You in the Know

| Event | Dress | Hat | Shoes | Purse and Gloves | Coat |
|----------------------------|--|--|------------------------|---|-----------------------------------|
| Classes | Skirts, sweaters, blouses, simple wool or cotton dresses | Scarf, if needed | Loafers Sandals | Purse, if desired mittens or gloves | Seasonal coat or jacket, raincoat |
| Athletic Event | School clothes or sporty dress ups | Scarf, if needed | Flats, school shoes | Purse, if desired, mittens or gloves | Yes |
| Concerts and Plays | Suit, tailored or dressy dresses | No | Heels or dressy flats | Purse, gloves | Not a sport one |
| Shows | Suit, school clothes, tailored wool | No | Low or heels | Purse if desired mittens or gloves | School coat |
| Teas-Receptions | Dressy date dress, suit | Yes | Dressy heels | Yes | Dressy |
| Banquets | Long dinner dress Short dressy one | Find out beforehand from the Chairman. They vary a great deal. | | | |
| Firesides Exchange Dinners | Tailored dress Dressy dress | No | Heels or dressy flats | Probably not | If needed |
| Mixers | School clothes Suit, tailored dress | No | School shoes flats | No purse | School or sport |
| Formal Dances | Long and sleeveless | No | Dressy heels or flats | Yes | Dressy |
| Semi-Formal | Long but not so bare | No | Dressy | Yes | Dressy |
| Informal | Dressy street length | Occasionally | Heels or dressy flats | Yes | Plain coat |

Traditional Songs . . .



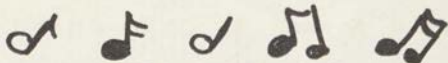
UP WITH MONTANA

Up with Montana, boys, down with the foe,
Old Montana's out for a victory;
She'll shoot her backs around the foeman's line;
A hot time is coming now, oh brother mine.
Up with Montana, boys, down with the foe,
Good old Grizzly'll triumph today;
And the squeal of the pig will float on the air,
From the tummy of the Grizzly Bear.



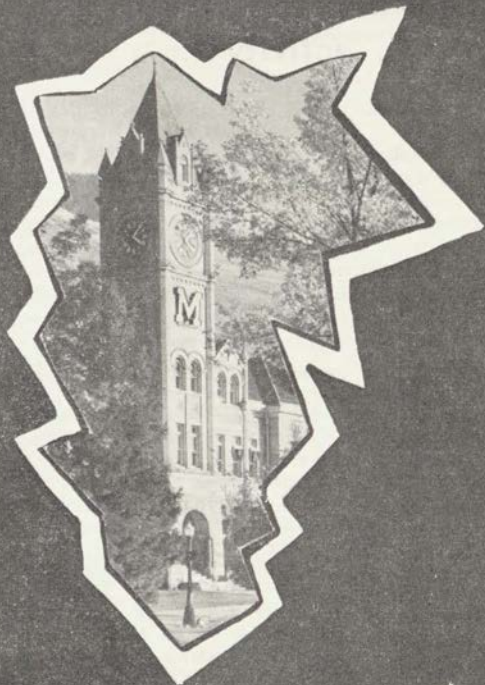
HAIL COPPER, SILVER, GOLD

Hail copper, silver, gold borne by our warriors
bold
It's the flag of the Grizzly Bear.
See those Bruins tearing their way down the field,
We know they never will yield, Montana,
On they go and trample down the foe.
Let's go Montana, we love the fray,
The Grizzly fight, fight, fight will bring victory
Let's go Montana, we'll win today.



OLD COLLEGE CHUMS

Old college chums, dear college chums,
The days may come, the days may go;
But still my heart to mem'ries cling,
To those college days of long ago.
Thru youth, thru prime, and when the days
Of harvest time to us shall come,
Thru all we'll bear the mem'ries dear,
Of those college days of long ago.



Time On Your
Hands

Nothin' to do?—try an activity . . .

So you like music! Do you realize that M.S.U. has the best school of music in the Northwest? The **symphony orchestra** gives quarterly concerts and plays on special occasions, such as Commencement. The **concert band** has two formal concerts plus several small concerts and an occasional trip. Football season finds the **marching band** and **twirlers** performing on the field. The **A Cappella Choir**, the **University Chorus**, **Jubileers**, and other choral groups unite each spring and Christmas time to present special programs.

If you are interested in publications you will have an opportunity to work on the **Venture**, the **Sentinel** or the **Kaimin**. Venture is an all-school magazine edited by students, which presents short stories, sketches, editorials, essays, and poetry by campus writers. The Kaimin is published by students of the journalism school every Tuesday, Wednesday, Thursday, and Friday. It is distributed to the dormitories and buildings on campus before eight o'clock classes, and is free to all students. After you're well acquainted with college life and are anxious to have in permanent form a concentrated capsule of your school year, you can pick up your Sentinel. This year-book contains your complete year, your friends, profs, classes, traditions, and dances. The Sentinel staff members are chosen spring quarter from the interested students who apply for work in the many divisions—typing, advertising, makeup, etc.



If you like drama, you can drop in on the tryouts held each quarter for **Masquer productions**. Individual effort will give you the part you desire. Besides acting, people are needed to paint flats, put grease paint on play characters, make costumes, and participate in the business end of the play which includes house management, publicity, and ticket sales. If you have a golden voice, **Radio Guild** offers many opportunities.

Like sports? The **Women's Recreational Association**, through its intramural board, sponsors many activities that will give you the opportunity to meet lots of wonderful gals and exercise your muscles. The intramural board is composed of outstanding gals who have been selected to manage sports in which they excel. WRA sponsors social affairs and play day for high schools of the district, and participates in the annual college play day. Every university woman is automatically an associate member of WRA. After earning your first P.C. (participation credit earned for each hour of intramural sports) you are entitled to active membership which entitles you to voting privileges and the right to participate in the social affairs of the organization. Each active member who earns six P. C.'s is awarded an "M" pin, and ten P. C.'s earn her a gold block "M" and membership in the women's M club.



If soothing little arguments settle your nerves, you'll like the **Debate Team**. Any student is eligible to try out for a place on this team, which meets other collegiate groups in hot debate. Individual members successfully enter state oratorical and extemporaneous contests.

There are numerous clubs associated with the different schools on campus. For instance, the

Homearts Club for home-ec. majors, that sponsors a style show each year, where members model their own creations.

Press Club, the official club for the journalists, sponsors a big fall feed at the Press Club Party and a spring picnic.

Interest in mathematics is a requirement for membership in the **Math Club**—whose activities include discussions of the mathematical field by faculty members, an annual party at Dr. Merrill's home, and a picnic with the **Chemistry Club**.

The American Pharmaceutical Association has a branch on the campus known as the **Pharmacy Club**. They sponsor the annual Pharmacy Ball and promote interest and professional ethics in pharmacy.

The **Ski Club** comes to life after the first snow fall. An annual week-end ski trip to Big Mountain or some other ski run is the highlight of the year's activities.

More in the social line of activities are the **Royaleers**—a square dancing group, the **Bridge Club**, and **South American** dancing classes.

Each year twenty-five freshmen girls are chosen to march with the ROTC boys. These girls along with the older members form what is known as **ROTC Sponsor Corps**.

These are the organized activities on campus open to women, aside from religious groups, student government affairs, and living group participation. Nothing else can be said, except—whew!

Now for the honoraries . . .

Alpha Lambda Delta

Freshman women who have maintained a grade point index of 3.2 ("B" plus) average fall and winter quarters are elected to Alpha Lambda Delta, national honorary which was founded here by the local chapter of the senior scholastic honorary, Mortar Board. The active members encourage high scholarship among freshman women, and at a ceremony in the dorms, fall and winter quarters, present roses to women having a 3.2 average.

Spur

Tanan-of-Spur is an honorary for sophomore women. Each spring twenty-five Spurs are chosen on a basis of dependability, a 2.3 grade average for two quarters, school spirit, neatness, willingness to work, pep, personality, and activities. Activities include dramatics, athletics, music, debate, publications, clubs, and religious groups. An important requirement for eligibility in Spur is that a girl drink only soft drinks during her freshman year. This is also true of her sophomore year, when she is an active Spur.

Mortar Board

This is one of the highest honors a woman can earn on the campus. Members are chosen during their junior year by a unanimous vote of the active chapter and are tapped at an SOS during track week. They are active during their senior year.

Mortar Board members are definitely above average in scholarship, leadership, and service. Sponsoring a training workshop for all campus officers, giving the "Smarty Party," and sponsoring the local Alpha Lambda Delta organization are included in their activities.

Phi Kappa Phi

Phi Kappa Phi, national scholastic honorary which recognizes students and faculty with superior scholarship in all fields of study, was newly installed on campus last fall. It has replaced Kappa Tau, local scholarship fraternity. Membership in the organization includes the top 5 per cent of the junior class, the top 10 per cent of the graduating senior class and outstanding faculty members. The group publishes a student-faculty directory, the "Grizzly Guide" and offers a scholarship to an outstanding junior.

Eta Epsilon

Eta Epsilon, women's home economics honorary, promotes home economics on the campus. A member must be of junior standing, have taken at least 24 credits and have maintained a 2.7 grade index in this department. She must have the university average for her entire school career, have no F's on her record, and be active in the Homearts club.

Phi Chi Theta

Phi Chi Theta, women's business honorary, works with Alpha Kappa Psi, men's business honorary, on Bank Nite and the annual job clinic. They also give a \$20 scholarship to the junior girl having the highest scholarship in business administration, and award a key to the outstanding senior girl majoring in business administration. A

2.5 grade index in bus. ad. is required for membership.



Mu Phi

Mu Phi, women's music honorary, promotes musical interest on the campus, presents a musical convocation to the student body each year, handles the publicity for recitals given by women music students and assists with music meets. Members must have a 3.5 average in music and an over-all university average of 3.0. They are chosen on the basis of scholarship, music participation, campus activities, and character.

Theta Sigma Phi

Theta Sigma Phi, women's journalism honorary, takes an active part in the activities of campus life. Members must maintain a "B" average in the School of Journalism and an all-over average of "C". Each year they sponsor the annual Matrix Table dinner which honors an outstanding co-ed from each class and brings to Missoula noted women journalists.

Masquers

Masquers, drama honorary for men and women, pledges hard-working students with 200 hours (20 points) in two fields of endeavor. With 100 points you reap the highest title—Masquer Royale. The year's program includes variety reviews, an all-school musical and a spring operetta with the music school, and the Little Theatre Festival during Interscholastic.

Aquamajds

Aquamajds is a women's swimming honorary whose members are chosen on the basis of a standard swimming test and interest in the organization. They present an annual water pageant in winter quarter, sponsor intramural and inter-collegiate women's meets and help with high school play day.

Women's "M" Club

The basic requirements for membership in the Women's "M" club include a junior class standing, a "C" scholastic average and ten participation credits, earned in three team sports, three individual sports, and four elective sports of which not more than two may be interseasonal activities. Girls thus eligible must also meet certain character and leadership requirements set by the "M" club. The club works in co-operation with WRA, sponsoring several social affairs, play days, to which all women students are invited. At their annual "Sno-Party" new members are tapped.

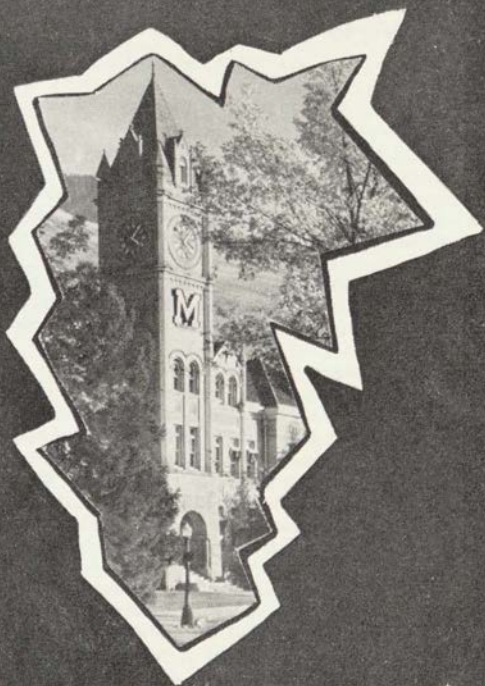
Opps! What about the studying?

If you plan a study schedule and stick to it, besides studying and belonging to some of these



organizations, you as a grizzly will be able to get good grades and still have extra time for pleasure. Remember both **activities** and **grades** are important for membership in the various honoraries. The two are complimentary, and time must be allotted to each according to individual capacity.

The important thing isn't to "keep up" with anyone else, but just to do your best in both courses and in whatever extracurricular activities you participate.



Time to Govern

Your rules—made by you, changed by you, obeyed by you . . .

As a woman student of Montana State University, you are subjected to certain rules and regulations concerning hours, trips, and housing.

Hours . . .

Freshmen women students shall be in their homes by 10:30 p.m. Sunday, Monday, Tuesday, Wednesday, and Thursday. Upperclassmen shall have the same hours, with the exception of 11:00 p.m. Sunday. On each Friday, Saturday, and on Thursday night of final week, and nights preceeding all University holidays, (Thanksgiving, Memorial Day, and Trackmeet), hours are extended to 1:00 a.m.

Concert Hours are given to students who attend concerts, ball games, plays, etc., on school nights. This means that they may stay out after the regular hour if the affair lasts longer, but must return immediately to their houses after it is over.

Late Per is another special type of hour regulation. It is granted, under special circumstances involving departmental work, by the Associate Dean of Students. This gives women the privilege of staying out past the regular hours.

Senior Privileges, which are 11:30 p.m. hours on week nights, are extended to senior women who have a "C" average with 135 credits. Use of the privilege to the extent of two week nights, excluding Monday night, will not be considered an abuse in ordinary circumstances. As a point of honor, women will inform their housemother before 6:00 p.m. of the night they expect to use their privilege.

Ouch! A campus . . .

A Campus is the usual penalty for an infringement of the above laws. This means that

the girl is restricted to her housing center from 6:00 p.m. to 6:00 a.m., during which time she may have no guests. Campuses can be taken on Friday and Saturday nights only.

Violations for which campuses are given are one late totaling 15 minutes or over, two lates totaling 15 minutes in any one quarter, or three lates whether they total 15 minutes or not in one quarter. The penalty for a broken campus is two consecutive weekends of campus.

A **Deferred Campus** may be obtained by calling the president of AWS, or if she is absent, the vice president. For each night deferred, an extra night of campus will be added. For reasons such as a house or dorm function, University authorized trips, etc., a campus may be deferred with no added penalty.

The penalty for three or more appearances before the board during the school year will be left to the discretion of the board.

Men are not allowed in women's residences before 4:00 p.m., Monday, Tuesday, Wednesday, and Thursday; 12 noon on Friday and Saturday; and 9:30 a.m. Sunday. On Monday, Tuesday, Wednesday, and Thursday, they are not allowed in women's living groups between 7:30 and 9:30 p.m. College women may not visit the residences of men without approved chaperonage.

Shh-h—it's quiet hours . . .

In order to live in closer harmony with your neighbor in your living group, certain house regulations have been made. Quiet hours are the rule from 8:00 a.m. to 12 noon; 1:00 p.m. to 4:00 p.m.; 7:30 p.m. to 9:30 p.m.; and 11:00 p.m. to 7:00 a.m. Radios and typewriters should not be heard in adjoining rooms.



Goin' home?

As a freshman you are allowed only three weekends a quarter for going home or on other trips. If you earn a 2.4 fall quarter grade average you are exempt from this rule the following quarter. A 2:00 grade average winter quarter exempts you from this rule spring quarter.

When going home, you are required to report back to your respective living group according to University hour regulations. If you are unable to return by the specified time, you are required to notify your housemother.

Register before visiting . . .

Any time you wish to visit friends or relatives living out of Missoula, **upon receipt of a written invitation**, you must complete an out-of-residence form with your housemother. This permission will be given on weekends only. Any time you leave the campus for more than two hours, you are required to sign out.

If you wish to leave on days other than Friday and Saturday to go on authorized University trips such as debates, musical tours, plays, etc.; ski trips, fraternity weekend parties, visit friends and relatives living in Missoula, or to remain in town during vacation, you must receive permission from the Associate Dean of Students.

The case of any girl failing to sign out or signing out under false pretenses will be brought before the AWS Judicial Board. Failing to sign out for a weekend will result in a campus.

When making trips, you may receive special travel permission from your housemother not more than three times per quarter to return on or before midnight in case of a late bus or train. This permission will be granted only for travel by public conveyance and if a request is made before departure.

Policies . . .

Unless requested for consideration, lates will not be discussed singly until they total a campus.

If a girl calls in or notifies her housemother when she is unable to return to her residence by the specified time, this will be taken into consideration when a campus results.



A rate of 35 miles per hour should be allowed for traveling time and for any emergencies which might arise when a woman student is returning to her

residence. In giving campuses, this rate will be considered when a girl returns late to her residence.

The above rules are applicable to regularly enrolled undergraduate women students during the regular academic year and Missoula women who come under University jurisdiction. All exceptions to the above rules will be left to the discretion of the AWS Executive Board and the Standards Committee with the approval of the Associate Dean of Students.



The set up . . .

Associated Women Students—your student government—is composed of an Executive Board, Judicial Board and six committees.

Executive Board is composed of the officers of AWS and a representative from each women's living group on campus. This board meets every Tuesday afternoon at 4 p.m. to plan activities for you and to serve as your representative student government.

Judicial Board considers all infractions of hour regulations and is composed of the AWS officers and two roving representatives from women's living groups. It meets on Mondays at 4 p.m.

Publicity Committee makes all the posters and signs for AWS sponsored events.

Hospitality Committee acts as the official hostess for campus visitors. Members greet callers, show them the campus and strive to make their stay here a pleasant one.

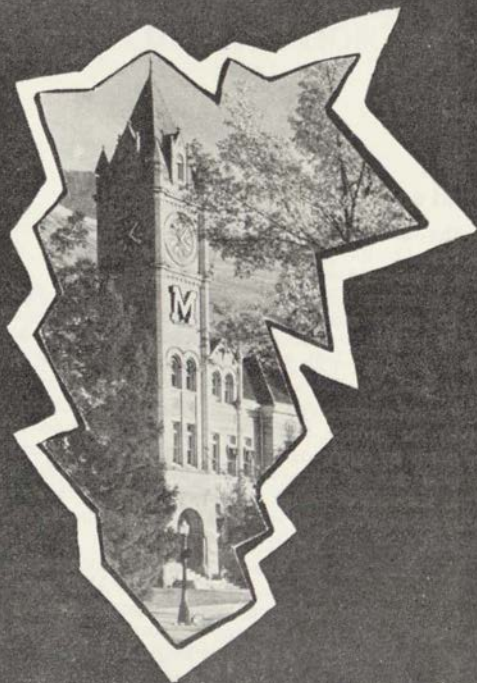
Counsellor-Counsellée Committee sponsors the big-little sister program which includes the party in the fall. Its job is a big one as it helps all new students feel a part of campus life.

Faculty Committee sponsors the Easter egg hunt on the oval for the faculty children. It also plans informal teas which enable faculty and students to become better acquainted.

Charm and Beauty Committee keeps girls in the know with the current styles.

Lantern Parade Committee sponsors the annual Lantern Parade in the spring which honors all graduating senior women.

Applications for these committees are distributed every fall. The AWS officers have extended a cordial invitation to you to attend the AWS Executive Board meetings .



Time to Begin

And so . . .

The time to begin is now—whether you find yourself in the position of the unsure freshman or the wise-cracking upperclass woman.

It is never too late to take in a meeting of that club you've always had it in the back of your mind to join. Choose your activities as you do your clothes—with taste and forethought—as to how well you both suit one another.

It's not necessary to be an expert in the activity, sport, or project that your club is organized to perform or carry out. It is much more important to you and of more value to the organization, if you, instead of being an expert, have a sincere interest in what you are doing and the time to do it well.

The clubs, the various activities and honoraries, and the elective offices are all here at MSU waiting for you, in addition to the opportunities for learning and for obtaining a career. If you haven't all ready, the time to begin is now.

ASSOCIATED WOMEN STUDENTS CONSTITUTION



Preamble

We, the women students of Montana State University, acting under authority granted by the administration, in order to assume individual and community responsibility in the life and conduct of women students and believing that there is honor and dignity in student government, do ordain and establish this Constitution of the Associated Women Students of Montana State University.

Article I

Name

The name of this organization shall be the "Associated Women Students of Montana State University."

Article II

National Affiliation

This organization is affiliated with the Intercollegiate Association of Women Students.

Article III

Membership

Section 1:

All women students of Montana State University shall be ipso facto members of this organization and shall be governed by the constitution.

Section 2:

The Associate Dean of Students shall act as adviser to this organization.

Article IV

Organization

Section 1: Executive Board

- a. The Executive Board shall be composed of the four elected officers; one representative from each sorority and Synadelphic; two representatives from each women's dormitory; one repre-

sentative each from WRA, Mortar Board, Tanan-of Spur, Panhellenic, and the off-campus women.

- b. The Executive Board shall have executive, legislative and judicial powers.
 1. The Executive Board shall have the authority to make rules and regulations, and other pertinent legislation pertaining to women students. It shall have the power to interpret and enforce such legislation.
 2. The Executive Board shall have the authority to take action regarding infringement of legislation. This action shall be taken by the Executive Board itself or by the Judicial Board.
 3. The Executive Board shall foster specific activities which contribute to high academic standards, and shall promote activities which create opportunities for experience in self-government.
- c. Qualifications and duties of representatives:
 1. All representatives shall have at least sophomore standing at the time of the regular election of officers, with the exception of representatives from the freshmen dormitories.
 2. All representatives are obliged to submit reports of any AWS rule violations to the Judicial or Executive Board. Deliberate failure to do this shall constitute grounds for removal from office by the Executive Board.
 3. A representative shall send a substitute if she is unable to attend a meeting. The substitute will have the power to vote. A representative absent without a substitute obligates the organization she represents to a 25¢ fine, payable to the secretary.
 4. All Board members shall attend the first two meetings in spring quarter in an advisory capacity.

Section 2: Executive Council

- a. The Executive Council shall consist of the four officers of the Associated Women Students and the Associate Dean of Students.
- b. The Executive Council shall meet regularly to discuss policies affecting all women students and to hear all cases of discipline not delegated to other authorities.

Section 3: Judicial Board

- a. The Judicial Board shall be composed of the four officers and two representatives from the Executive Board appointed each week by the

vice-president. The Judicial Board shall conduct preliminary hearings of AWS violations and make recommendations to the Executive Board. The vice-president shall preside over the Judicial Board.

- b. Each member of the Judicial Board shall have one vote.

Article V

Officers

Section 1:

The officers of this organization shall be a president, vice-president, secretary, and a treasurer. All executive authority shall be vested in the president. In case of absence of this officer, such authority shall devolve upon the vice president, the secretary, or the treasurer in that order named.

Section 2:

The officers shall assume their duties at the first meeting in the spring quarter, but shall attend meetings from the time of election until they take over their duties. The president shall remain on the Board spring quarter in an advisory capacity.

Section 3: Qualifications and duties of officers

a. President

1. The president of Associated Women Students shall be of junior standing at the time of the regular election and shall served as a voting member of the Board one year previously. She shall have a scholastic average of at least a C.
2. The president shall preside over all meetings of the Associated Women Students, the Executive Board, and the Executive Council.
3. The president shall appoint chairmen of committees, appointments subject to approval by the Executive Board. The Counselor-Counselee chairman and the Handbook chairman are elected by the Executive Board from the candidates submitted by the women's living groups.

b. Vice-President

1. The vice-president shall be of at least sophomore standing at the time of the regular election and shall have a scholastic average of at least a C.
2. The vice-president shall officiate in the absence of the president, and shall succeed to the office of president in the event that office is vacated.
3. The vice-president shall be chairman of the Judicial Board.

c. Secretary

1. The secretary shall be of at least sophomore standing at the time of the regular election and shall have a scholastic average of at least a C.
2. The secretary shall keep a record of the proceedings of AWS, of the Executive Board, and of the Executive Council.
3. The secretary shall take care of all correspondence of AWS.

d. Treasurer

1. The Treasurer shall be of at least sophomore standing at the time of the regular election and shall have a scholastic average of at least a C.
2. The treasurer shall make monthly reports to the Executive Board of all funds received and expended and all debts and balances as submitted to her by the auditor of the student organizations and in accordance with her own books.
3. The treasurer must sign all requisitions, contracts, and payments after they have been approved by the Board. Loans from the students' loan fund will be made by the president upon recommendation of the Associate Dean of Students and the Business Manager of the University.
4. The treasurer shall be in charge of primary and general elections.

Article VI

Meetings

Section 1:

Meetings of the association shall be held at the discretion of the president or at the request of twenty-five members of the association.

Section 2:

Regular weekly meetings of the Executive Board shall be held at a time convenient to the majority of the Board, and additional meetings may be held upon the request of the President.

Section 3:

Meetings shall be conducted in accordance with Roberts' Rules of Order.

Section 4:

Meetings shall be considered properly advertised if notices of such meetings appear in the Kaimin and are posted on the bulletin board one day before the meeting.

Article VII
Elections

Section 1: Primary Election

- a. Primary election shall be held one week before the general election.
- b. All candidates for office must present a petition bearing ten signatures to the secretary of AWS not later than one week preceding the scheduled primary election.
- c. The two candidates for each office receiving the highest number of votes in the primary election shall become candidates for office in the general election.
- d. The primary election shall be eliminated if there are only two petitions filed for each office.

Section 2: General Election

- a. The officers shall be elected for a period of one year at a regular general election the first week of March.
- b. A majority vote shall be required for election.

Section 3:

In the event of a vacancy in the offices of vice president, secretary, or treasurer, the office shall be filled by a member of the Executive Board elected by a majority vote of the Board.

Article VIII
Finances

The finances of the association shall be supplied from an amount appropriated by Central Board according to its budget.

Article IX
Amendments

Section 1:

The Constitution may be amended by a majority vote of all members. This vote may be taken at a mass meeting of the Association or by polling the living groups.

Section 2:

Proposed amendments to the Constitution shall be posted at least five days before a mass meeting or shall be read to each living group one week prior to the voting.

God's Minute

I have only just a minute
Only 60 seconds in it
Forced upon me, can't refuse it
Didn't seek it, didn't choose it
But it's up to me to use it
I must suffer if I lose it
Give account if I abuse it
Just a tiny little minute
But eternity is in it.

