

University of Montana

ScholarWorks at University of Montana

Associated Women Students Handbooks,
1919-1963

University of Montana Publications

1-1-1956

Associated Women Students Handbook, 1956-1957

Montana State University (Missoula, Mont.). Associated Women Students

Follow this and additional works at: https://scholarworks.umt.edu/aws_handbook

Let us know how access to this document benefits you.

Recommended Citation

Montana State University (Missoula, Mont.). Associated Women Students, "Associated Women Students Handbook, 1956-1957" (1956). *Associated Women Students Handbooks, 1919-1963*. 16.
https://scholarworks.umt.edu/aws_handbook/16

This Handbook is brought to you for free and open access by the University of Montana Publications at ScholarWorks at University of Montana. It has been accepted for inclusion in Associated Women Students Handbooks, 1919-1963 by an authorized administrator of ScholarWorks at University of Montana. For more information, please contact scholarworks@mso.umt.edu.



AWS and Your MSU Future

A College Handbook for College Women

EDITORS

KONNI FEIG

KAY LUND

STAFF

Carla Ingebo

Thelma Stubblefield

Liz Astle

Katy Lou Johnson

Kay Fallon

Sue Beckwith

Division Pages by Carole Lee

Published by

**THE ASSOCIATED WOMEN STUDENTS OF
Montana State University in Missoula, Montana**

1956-57

AWS -- Your Guide

Every woman who enters MSU becomes a member of Associated Women Students—the organization that guides her through her college days. It enriches MSU life with activities, traditions, and gives every woman the opportunity to have a voice in governing herself and other women—and **you** are no exception. AWS invites you to be an active member.

If you look back via the crystal ball, you will see that AWS has grown up from the "Women's League," as it was known when it originated in 1914, and through the years has carried on the tradition



of a governing body "of the women, by the women, and for the women." And now and in the future (use this crystal), you can see AWS as a big part of your college life. With a program designed to unify women attending MSU, to give leader-

ship opportunities, and to foster school spirit, there is a place for you—and more than that, a need for you. So follow the activities of Associated Women Students, visit Executive Board meetings, lend your help, energy, and ideas, and know you can look to a rosy future with AWS—for with **your** participation in **your** government, the crystal is bound to reveal a glowing picture of MSU life.



Welcome to Montana State University and to membership in AWS. We are looking forward with much pleasure to sharing with you our university opportunities and especially our women's activities. AWS has prepared this booklet as a guide for you in your life on the campus. We wish for you a stimulating and inspirational year and shall be happy to assist you at any time.

Maurine Clow
Associate Dean of
Students

University life is a new experience and one to which I am sure you are looking forward. I am pleased to have the opportunity of joining with Dr. Maurine Clow and the Associated Women Students in greeting you and wishing you success and happiness at MSU.

Harriet Miller
Associate Dean of
Students



Left to right: Nancy Perry, Pat Gestner, Marcia Smith, Joan Hoff

Hi —

Now that you're getting ready to attend MSU, you probably have a million questions to ask about university life, both scholastically and socially. It is the hope of the other AWS officers and myself that this handbook will answer most of your most pertinent questions.

We realize of course that no amount of printed material about the University will ever take the place of the actual experience of attending school here; therefore, we are looking forward to seeing you on campus this fall, in anticipation that your years here will prove to be as rewarding and as much fun as ours have been.

Please don't hesitate to call on anyone of us for additional information about AWS or the University, especially during Orientation and those first few weeks of fall quarter. Good luck,

JOAN HOFF, President
ASSOCIATED WOMEN STUDENTS

Associated Women Students—your student government—is composed of an executive board, a judicial board and six committees.

Executive Board is composed of the officers of AWS and a representative from each women's living group on campus. This board meets every Monday afternoon at 4 p.m. to plan activities and to serve as your representative student government.

Judicial Board considers all infractions of hour regulations and is composed of the AWS officers and two roving representatives from women's living groups. The group meets at 3:30 p.m. on Monday with the vice president presiding.

Publicity Committee makes all the posters and signs for AWS sponsored events, and lets the campus know about AWS activities.

Faculty Relations Committee sponsors an annual student faculty party and plans informal teas which enable faculty and students to become better acquainted.

Counselor-Counselee Committee plans the big-little sister program, including the big-little sister party during orientation week. Its job is big, and helps all new students feel a part of MSU campus life.

Charm and Beauty Committee sponsors two style shows during the year—one in the spring and one in the fall.

Lantern Parade Committee plans the annual Commencement week Lantern Parade which honors all graduating senior women, and installs the incoming AWS officers.

Applications for these committees are distributed every fall, and provide a good way to enter into AWS activities.

IAWS

Montana State University AWS belongs to IAWS—Intercollegiate Association of Women Students, an organization composed of AWS groups from colleges and universities all over the United States. It holds National and Regional conventions on alternate years, and at these meets ideas about different phases of college life and AWS are exchanged.

The goals of IAWS are to better women's governing groups and to consider problems relating to the role and responsibilities of women students in local, national, and international areas of concern.



AWS Loan Fund

For women students who need financial aid to go to school, AWS established a loan fund in 1923. There is now over \$2,000 in the fund, and any amount up to \$200 may be borrowed at 2% interest. Any girl may borrow from the fund with the approval of the AWS President and the Associate Dean of Students. The interval of payments—quarterly or monthly—is determined individually for each loan.

AWS SCHOLARSHIP

The AWS Cheadle-McKinley Memorial Scholarship of \$50 is presented each year to a sophomore woman at MSU. Any sophomore woman can apply, and the winner is chosen by the Associate Dean of Students, a faculty member, the president of AWS, and a member of the AWS executive board.

This scholarship was first presented in the spring of 1955, and is named in memory of Jane Cheadle and Marlene McKinley, outstanding MSU students who have died within the last ten years.

ACTIVITIES BALANCE

In the next few pages, this AWS handbook will present the many activities, honoraries, and offices open to women students of MSU. AWS would like very much to see the women who enter as freshmen, as graduating seniors in four years. And so, at some point extracurricular participation must be regulated, not only to keep grade averages up, but also to ward off a severe case of ulcers or "activity fatigue."

In view of this, the Executive Board of AWS has approved the following schedule. This is a list of what are termed, "PERMANENT A" activities, and **no more than one of these positions can be held at the same time** by any woman student attending MSU. A university woman can, however, hold a "PERMANENT A" and at the same time hold any number of other student offices, committee assignments, club memberships, and various campus positions not listed here.

PERMANENT A

- President of AWS
- President of ASMSU
- Editor of Kaimin
- Business Manager of Kaimin
- Editor of Sentinel
- Business Manager of Sentinel
- Secretary of ASMSU
- Business Manager of ASMSU
- Vice President of ASMSU
- President of Spur
- All Living Group Presidents

About the Campus

Whether you came to MSU to begin a career or to find that "certain man" you will want to make the most of your stay, so untangle all the names and find your bearings right away.

The campus at MSU is a mixture of new and old—Main hall, built in 1897, is the center of the administration. The President, Dean of Students, Associate Dean, Comptroller, and the Registrar all have offices there and all are available to students.

Brand new on campus is the health center, first occupied in the spring of 1956, which has enough beds and space to accommodate an epidemic of ailing students. Medical services and nursing care is provided from fees paid at registration time. Excuses for illness are issued here, but if you are wise—you will eat that apple a day!

Your advisor, who is assigned to you during registration, will be a professor from your major field of study. During your stay you will always have an advisor to help you plan ahead with credits and courses.



Study time at MSU will be best spent at the library. With the addition of the annex, open stacks are available, and with librarians and student assistants on hand to direct you, you'll be able to find "that" book.

The new Lodge serves meals to all dorm residents in the Food Center, which is called the Cascade room, with the exception of breakfast for women students which is served each morning in the Brantly hall dining room. The grill, in the basement of the Lodge, caters to the coffee hour and snack crowd. Meals can also be bought here. Upstairs are com-

mittee and conference rooms for meetings, large rooms for banquets and dances, and in the future—an AWS lounge is planned. Residence hall offices are also located here. Rooms in the Lodge are named after counties in Montana.

During your first year at MSU you will live in Brantly or Corbin hall. As a frosh you will find junior sponsors in the dorms to help, befriend, and give you the newest information about MSU. If you prefer to live in a co-op, Synadelphic house is open to all women students but the six sorority houses and Turner Hall house upper class women only. Ex-



cept for Missoula girls, freshman "pledges" are required to live in the dorms. You will find living in a group to be a lot of fun. The process of getting acquainted may seem long but the experience gained will prove useful in the years ahead. Those bull sessions are a lot of fun even though they aren't listed on your transcript!

Missoula—your home away from home for the next four years (we hope) is well equipped to handle the job. It is on the main thoroughfares of western Montana and is the center of traffic between Montana and Idaho. It is located in Missoula County with a 1950 population of 22,485. The river which divides the city is called the Missoula, if you leave on Highway 93 you will call it the Bitterroot, towards Bonner the name is the Blackfoot, and at Superior and at Drummond it's the Clark's Fork.



During fall and spring quarters you will easily see why Missoula is called the "Garden City." Rain comes

down with sudden notice but sunny skies always follow.

The busy downtown shopping district attracts many coeds and many of you will be found taking the hike across Higgins Street bridge every Saturday afternoon.

A variety of dating activities is available in Missoula, one of the nicest being a special invitation out to dinner at the Chateau, Florence, or one of the other good Missoula restaurants. There are also five theaters, plus two drive-ins, a roller rink, two bowling alleys, horseback riding and picnic areas for off-campus entertainment. With fraternity functions and Saturday and Sunday outings you will soon become acquainted with the names and locations of Missoula's city parks—Greenough, Kiwanis, and Montana Power. The campus offers a bowling alley, located in the women's center, and Glacier ice-skating rink, which operates all year round. You will find it fun to skate on a sunny fall afternoon! Winter quarter finds many ski enthusiasts heading for nearby Diamond, Marshall, TV Mountain, and Lost Trail ski areas. Two ski weekends are planned annually by the active MSU ski club for student skiers. Warm spring days will guide cars to Lolo, Sleeping Child, or Gallogly, the three hot springs located near Missoula, for a day of swimming. Hikers will find that a walk up Mount Sentinel to the M will occupy an afternoon. Bicyclists have many opportunities for exploring and exercise.

The Community Concert Association holds a series of concerts on campus for Missoulians and students each year and the music school offers the Little Concert Series, so bring your ticket money and you will enjoy music all year.

The churches of Missoula welcome you and issue an open invitation for you to visit them at any time,

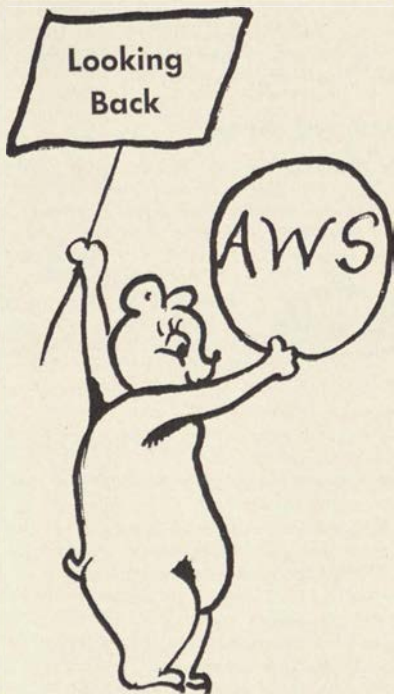
especially Sunday morning. A variety of activities is planned for you throughout the year and your



participation in them is their wish. During Orientation Week all churches will have an open house for new students where you can meet the pastor and find out about the services and club activities for university students. Try to start the first Sunday here

with a church service. Find a church and stick with it all year. Away from home doesn't necessarily mean away from church.

The Missoula Chamber of Commerce is always ready to help with an answer to all questions. You will find it an easy task to obtain comfortable lodgings for your parents when they come to visit and if you are mystified by all these foreign words you hear—Pattee canyon, Hellgate canyon, the Rattlesnake, Mounts Jumbo and Sentinel—just look to the nearest upperclassman for translation and directions!



Thru the Years at MSU

Looking into the crystal ball back through the the years, we see that MSU has developed many customs and annual happenings—traditions we call them—that make college life dear to all students. All true Grizzlies observe these traditions as an important part of college life.

Crystallized Firsts

The first tradition that we see in the crystal ball is Orientation Week, a hectic time that is filled with making new friends, getting settled in the dorms, becoming acquainted with the campus, and just for entertainment, taking tests!



When you move into the dorms, the first day the Spurs and the Bearpaws sell you a Frosh beanie, your constant companion through this week. On one of your first nights, AWS sponsors a big and little sister party, so that you can get acquainted with your big sister. At this party, campus organization prexies and representatives explain campus activities and honoraries—and recruit interested volunteers who wish to put their special talent to use here at MSU.

Some afternoon during the week, all of the frosh don their jeans and climb Mount Sentinel to paint the "M" (or is it to paint each other? More seems to end up on the fellows and gals than on the "M"). Spurs and Bearpaws encourage frosh along the way and serve refreshments at the end of the trek.

Another activity of the week is the picnic late Sunday afternoon which is sponsored by student religious groups. Here you play games, eat lots of good food, and meet the leaders of the student denominational and nondenominational groups.

On Sob Sunday, the second Sunday away from home, AWS, Spur, and Mortar Board give a tea for the homesick cubs. Your AWS big sister escorts you to this and sees that many of the upperclass women have the opportunity to meet you.

Other AWS activities will come throughout the year—a party with the faculty or their children, style shows, and Sno Week End. Any of the older grizzlies will tell you that AWS brightens many a day at MSU! Working on an AWS committee is even more fun than just sharing in the parties and ideas, for you feel that you have created a part of the new traditions which grow each year.



Every fall the Grizzly Growlers, an organization made up entirely of freshmen, paint the victory bell so that it will be in top condition to appear at every Grizzly football game. It is the responsibility of the freshmen to see that this bell is wheeled around the football field and rung after every victory.

Everyone Pitches in

The first really big thing after Orientation Week is Homecoming. This weekend sponsors a football game, a parade with floats made by all of the living groups, a pep rally and convo on Friday morning, and a bonfire and noise parade Friday night. Saturday, following the parade, the game, and the dinner, is a big all-university dance.

Before important events, convocations are held, featuring student or outside entertainment. One of the special ones is the Foresters' Convo, the Friday before the Foresters' Ball. Another is held before the Bobcat-Grizzly game to spark spirit. As a result MSU usually wins the game and the travelling

trophy which goes to the winning team. This game is played at the different schools on the alternate years, and is the cause of mass migration from one school to the other.

All dads are honored at a football game on Dad's day. The oldest father and the dad coming the farthest distance are presented with awards. All MSU students' fathers are invited to the game.

Another of the wonderful traditions which you will

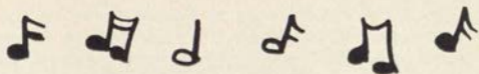
immediately share is Hello Walk, dedicated to friendship, where traditionally everyone greets everyone else with a big smile and an enthusiastic "Hi." It is the section of sidewalk running from the front of the Liberal Arts building to the Arts and Crafts building.



Annual Affairs

Some of the more social traditions are the annual Foresters' Ball, sponsored by the Foresters in a magnificent fashion; the Barristers Ball where the lawyers fete J. Learned Brow; the Nite Club dance sponsored by the Music School in a night clubbish atmosphere, the Military Ball given by the ROTC department, at which time the coed colonel is announced; and the Sadie Hawkins dance preceded by twirp week so that every gal can catch her dream man, Lil' Abner.

Traditionally at Main Hall



Singing on the Steps, or SOS, is one of the most beloved of all MSU traditions. The songs, led by the Spurs and Bear Paws, are perfected and they form the background for many events, one of them the tapping of members for honoraries. SOS starts promptly at 7:30 p.m. and at the striking of eight everyone is silent—at the end of the eighth gong the students begin to sing softly the song "Old College Chums" and walk away humming it—leaving a happy and friendly note hovering around the spires of Main Hall, the heart of MSU traditions.

Come Spring

On All-"U" day, classes are dismissed at three, and all of MSU's faculty and students gather together for a picnic. This is followed by a mixer.

Greek Aber Day is sponsored by all the of sororities and fraternities and includes a picnic and a dance.

Interscholastic is a main event in the spring when all of the Montana high school students arrive at MSU for competition in athletics, speech, dramatics, and journalism. Mortar Board, Spurs, and Silent Sentinel tap their new members during a big picnic dinner on the oval, and an all school song fest with every living group competing is held.

And at the annual Sig Alph Olympics every women's living group gets a chance to prove skills in events such as pie eating, egg throwing, and three-legged racing.

For Seniors Only

When the cub becomes a Grizzly senior he can appreciate the long wait and privilege of sitting on the hallowed Senior Bench, donated by the Class of 1910. Saturday night before commencement, AWS

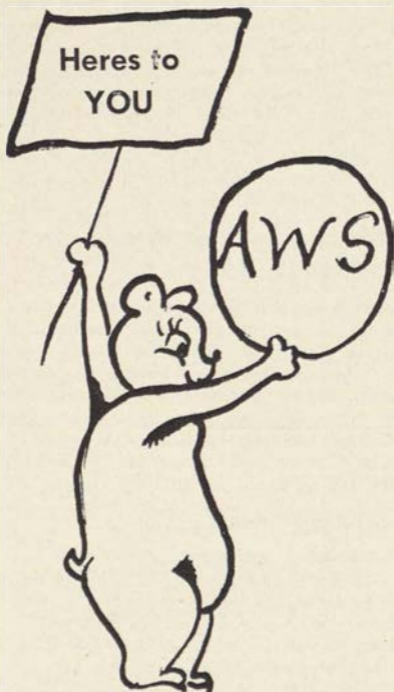


officers are installed and underclass women honor the graduating senior women with a Lantern Parade. The coeds march around the oval carrying lighted lanterns while the seniors in caps and gowns form an M in the

center of the oval. "Montana, My Montana," is sung from the tower of Main Hall and the MSU women respond with "College Chums."

Small but Necessary

All of these are the traditions at MSU, and there are many more that you will discover for yourself when you arrive—such as walking around the oval, the band marching and practising on the Clover Bowl day after day, the ROTC units on the oval on Monday evenings, coffee in the lodge every afternoon, and Charter Day. These traditions enrich the days and years at MSU, creating memories that will remain a precious part of your life, living on in the hearts of the past, present, and future students of MSU.



Make New Friends—Keep the Old

As long as you have the powers of this Crystal Ball working for you, why not check on some of the people you'll be meeting at MSU? Look deep into the ball's dark, mysterious depths. Do you see a tall, dark, darling guy? Hummmmmm—funny, how most girls interpret the word "people," isn't it? But seriously, you will be meeting many people. It'll be your job to be the kind of person they will want to know better. Your first impression may be what makes up their mind for them. Here are a few clues that will make that first impression a good one.

Something your best friends won't tell you?

Too much make-up won't make the best impression. Remember it's you they're meeting, not Max Factor. Don't lose your head clothes-wise either. It's better to be Plain Jane than Fancy Nancy. People can get the wrong impression from the wrong dress. Stringy unkept hair has never been known to receive the compliments. Remember, scrub in time and you'll look fine.

Music to their ears?

The first thing people notice when they meet you will be your voice. A pleasing voice and good grammar will do a lot toward making that good first impression. If they have to translate your "cool" high school lingo, or rearrange your misplaced modifiers, they may not have time to talk to you. Profanity can be dropped without being missed. And while you are tossing things out, get rid of the gossiping too. There may be a time and a place for everything, but for these two, there is neither.

Lovely to look at. Delightful to know?

Although you may have all these qualities and also be as beautiful as Miss Universe, you still may not know what to say when you first meet someone.



When you are at college, you will always be introducing "so an' so" to "so an' so." The Emily Post form is, "May I present" but more simply you'll be saying, "This is . . ." or "Have you met . . ." Try to mention something about each person you introduce to give the conversation a

start. They can't talk about the weather all the time. It isn't that interesting.

Which name comes first?—the woman's if you're introducing members of the opposite sex; the older person's if they are the same sex; the married woman's first if introducing her to an unmarried woman; the most important person first if he is really important.

Examples:

"Miss Jane College, this is Mr. Joe University."

"Mrs. Gray-hair, Miss Frances Frosh."

"Dr. Pains, have you met Miss Poodlecut?"

If someone is introducing you, smile and say, "How do you do?" Should you shake hands? Here's the formula. Two women may or may not shake hands. You usually won't offer to shake hands with a man unless you are the hostess. If you do shake hands, make the handshake a good firm one. Don't use a wrestlers hold, or the dead fish type, and never refuse an extended hand.

What about when you leave? Well, Mr. Gentleman may say, "I'm glad to have met you." At least let's hope he does. If he says this, you should say, "Thank you," or "It's been a pleasure," (if it has). But be smart and don't gush all over him. Let him make the first comment.

Tall, dark and darling

Glance in your crystal ball again and check on your favorite friend. Is he still tall, dark and

darling? Dates will be a big part of your college life. But remember, you have to treat the guys gently, that is if you want some dates, and not just a date. But, if you use your head and follow a few simple rules, you won't go wrong.



1. Will you accept blind dates? Sure you will! Don't forget, he's taking chances too.

Just check with whoever arranges the date, and no doubt you will have a good time.

2. But—don't break one date to take another! Your popularity will be short-lived if Date One finds out, and Date Two won't be too happy about it either.

3. When the guy says, "Do you want a **coke**?"—he means "coke," not hamburger, malt, french fries. Maybe he's only got a dime. Anyway, you'd better be calorie counting! Nobody loves a fat girl!

4. Make like the helpless female. Hand him your coat; hesitate before doors. He'll get the idea, and probably like it.

5. Don't bore the poor guy with a running commentary about your many loves. Remember he's not interviewing you, and maybe he'd like to get a few words in. At least give him the chance!

6. Rumor has it that "Love is a many-splendored thing." That's all very sweet, but you needn't be a smooching proof of this for the whole campus, or for the Housemother. You'll see him tomorrow, so see if you can un-twine yourselves on the dorm steps before 1:00 a.m. Housemothers sleep too, you know.

What should I wear?

This is the universal question among women when there are places to go or things to do. The chart should assist you in choosing your apparel for most occasions. But, before you check it over, a few hints. If you plan to buy many new clothes before coming to MSU, try to plan your wardrobe to revolve around two or three basic colors. This will cut down on accessories and make for a more stylish you. But don't buy the town out, 'till you're sure what you want. To be sure, be conservative. You can wear a plain coat anywhere; the same with a plain, simple suit. A basic dress is smart too because it can easily be changed with scarves or beads. And for heels that always do the job, get plain pumps. You might need a raincoat and when the snow flies you'll need galoshes or snow boots for that cold trip to class. Jeans are worn for picnics and intramural sports, and are in the vogue at barn dances or the Foresters' Ball but NEVER wear jeans downtown.



To Keep You in the Know

Event	Dress	Hat	Shoes	Purse and Gloves	Coat
Classes	Skirts, sweaters, blouses, simple wool or cotton dresses	Scarf, if needed	White bucks, Loafers, flats, and boots for winter, snow	Purse, mittens or gloves	Warm for winter, jacket, raincoat for spring
Athletic Event	School clothes or sporty dress ups	Scarf, if needed	Flats, school shoes, for football, snow boots	Purse, mittens or gloves	Yes, warm
Concerts and Plays	Suit, tailored or dressy dress	No	Heels or dressy flats	Purse, gloves	Not a sport one
Shows	Tailored wool Suit, school clothes,	No	Low or heels	Purse, mittens or gloves	School coat
Teas-Receptions	Dressy dress, suit	Yes	Heels	Yes, both	Dressy
Formal Banquets	Short or formal, with stole or jacket	Find out beforehand from the Chairman. They vary a great deal.			
Firesides, Exchange Dinners	Tailored dress, Dressy dress	No	Heels or dressy flats	Probably not	When necessary
Mixers	School clothes, simple wool	No	School shoes flats	No purse	School or sport
Formal Dances	Short or long formal	No	Dressy heels or flats	Yes	Dressy
Semi-Formal	Short or long but not too bare	No	Dressy	Yes	Dressy
Informal	Dressy street length	Sometimes	Heels or dressy flats	Yes	Plain Coat
Big-Name Band	Dressy dress, dressy skirt and jeweled sweater	No	Heels	Gloves	Dressy

Now and Thens

Don't get discouraged and close the book after that stiff, formal chart of clothes; there's more. There are some outfits that you won't be wearing every day, or even once a week, but they'll be just the thing now and then. If you're not afraid of an occasional wondering look, bring your Bermuda shorts—socks and all. They're the favorites in the early part of fall quarter and during spring quarter.

For you more conservative girls, pedel pushers and tapered pants are "en vogue" for picnics or just casual wear..

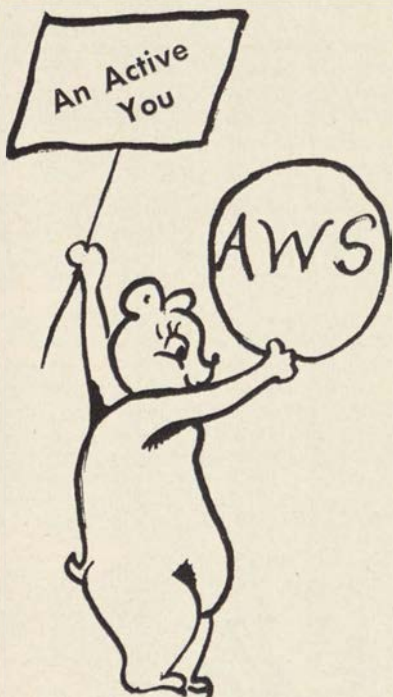
Sunshine Suzies, if you're searching for that first tan, don't forget your swimming suits. Granted you won't use it much during winter quarter, but come spring and the sun, you'll be glad you brought it.

Skiers—speaking of winter quarter, don't forget your ski togs. Big Mountain is perfect for those ski weekends.

Tennis anyone? Shorts and blouses are tennis court garb and a racket might come in handy.

One last hint: many of the frat functions you'll no doubt be going to will be costume parties. Sigma Alpha Epsilon has a harem party; Sigma Nu, a gangster party; Phi Delta Theta a Hawaiian party; etc., etc. Not to mention the Sadie Hawkins Dance sponsored by the Spurs. All these parties can be the greatest, if you don't go crazy trying to think of something to wear. So if you've got a costume, or costumes, bring them with you. You'll never regret having them.

Now, don't go out and lose your head buying out the sport shops and costume shops in your immediate area. Save your money. Wait to see what you want, then buy it. Spend wisely, the money you save may be your parents.



Nothin' to do?—Try an Activity

We see in the crystal ball, activities for one and all, just pick your field. Whether your past is brimming with experience or whether interest is your main asset, try a club intertwined with your studies. You meet people and gain experience at the same time that you are being of service.

There are variety and spirit in the interesting activities here at the University. **Montana Forum** is the faculty-student discussion group meeting at a weekly luncheon. A great variety of subjects are viewed from many angles.

The **Debate organization**, not limited to English or speech majors, welcomes beginners and old hands alike. This group sponsors the debates at Inter-scholastic and enters teams in various debate tournaments.

Then, too, there's that enthusiastic freshman pep club, **Grizzly Growlers** which boosts school spirit.

In the lighter vein **Kams and Dregs** is an organization of clowns, extroverts, and cutups. Members are tapped during their junior or senior year. Kams and Dregs entertain at games dressed in appropriate costumes, waving signs and singing spirited songs.

Seriously now, the **Student Christian Association** is a non-denominational Christian fellowship. During the year it has faculty firesides and sponsors Inter-church Council.



The **Ski Club** is open to any skiers. Main activities include the annual trip to Big Mountain, a Ski Carnival, and ski weekends.

Say, "junior bird-girls" if you're in-

terested, there is a **Flying Club** on the campus, that owns its own plane. Anyone over 15 years may belong.

Like to dance? **Royaleers** is the square dance organization and anyone may try out. Their program includes tours and exhibitions in the spring.

In the line of music there are **symphony orchestra**, **concert band**, **marching band**, **twirlers**, **A Capella Choir**, **wind ensemble**, **brass choir**, **clarinet choir**, **freshman sextette** and **university chorus**. If you're talented, come ahead.

Enjoy journalism or publication work? Unlimited opportunities are available on the **Sentinel**, the university annual; the **Kaimin**, the university paper with issues Tuesday through Friday every week; and the **Venture**, a quarterly publication containing exceptional student literary compositions. Just because you can't write, don't despair—you can sell ads, read copy, and report news or hold numerous other jobs.

Masquers productions bid for your interest, too. Everyone interested in dramatics, not just acting, but staging, costuming, or producing, is invited to help. For one hundred participating hours in this field, you may be a member of **Masquers**. **Radio Guild** beckons to you radio-minded individuals.

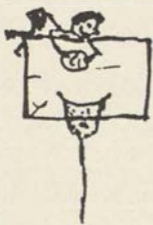
A good way to meet people with ideas similar to yours is to join the religious group of your preference. These club include **Lutheran Student Association**; **Wesleyan—Methodist**; **Newman Club—Catholic**; **Westminster—Presbyterian**; **Christian Science Organization**; **Roger Williams Fellowship—Baptist**; **Canterbury Club—Episcopalian**; **Deseret Club—Mormon**. They all extend the cordial hand of welcome to you.

Nearly every school on campus has at least one organization. Among the clubs for "majors" are the **Liberal Arts Club**, the **Future Teachers of America**, the **Math Club**, the **History Club**, the **Chemistry Club**,

the Home Arts Club, the Pharmacy Club, the Bacteriology Club, the Press Club and the Wildlife Club.

Each year twenty-five freshmen girls are chosen to march with the ROTC boys. These girls along with the older members form what is known as ROTC Sponsor Corps.

Like sports? The **Women's Recreational Association**, through its intramural board, sponsors many activities



that will give you the opportunity to meet lots of wonderful gals and exercise your muscles. The intramural board is composed of outstanding girls who have been selected to manage sports in which they excel. WRA sponsors social affairs and play day for high schools of the district, and participates in the annual college play day. Every university woman

is automatically an associate member of WRA. After earning your first P.C. (participation credit earned for each hour of intramural sports) you are entitled to active membership which entitles you to voting privileges and the right to participate in the social affairs of the organization.

If you're interested in politics try the Republican or the Democrat club. The **Independents** beckon to you non-frat students. This group meets for sociability and sponsors exchange dinners and firesides. If you are foreign-minded, visit the **International Relations Club**.

These are the organized activities on campus open to women, plus student government affairs, and living group participation. Nothing else can be said except—whew!

Opps! What about the studying?

If you plan a study schedule and stick to it, besides studying and belonging to some of these organizations, you as a grizzly will be able to get good grades and still have extra time for pleasure. Remember both **activities** and **grades** are important for membership in the various honoraries. The two are complimentary, and time must be allotted to each according to individual capacity.



The important thing isn't to "keep up" with anyone else, but just to do your best in both courses and in whatever extracurricular activities you participate.

HONORARIES

Looking into the crystal ball we see HONORS for YOU! . . .

Alpha Lambda Delta

Freshmen women who have maintained a grade point index of 3.5 average fall and winter quarters are elected to Alpha Lambda Delta, national honorary which was founded here by the local chapter of the senior scholastic honorary, Mortar Board. The active members encourage high scholarship among freshman women, and at a ceremony in the dorms, fall and winter quarters, present roses to those women having a 3.5 average.

Mortar Board

The active members of this honorary are seniors who are chosen during their junior year by a

unanimous vote of the active chapter on the basis of above-average scholarship, leadership and service. They are tapped at the SOS during Inter-scholastic. Some of their activities include sponsoring



a training workshop for all campus officers, giving the "Smarty Party" and sponsoring the local Alpha Lambda Delta organization. Being chosen as a member of Mortar Board is definitely one of the highest honors which can be earned by a University woman!

Spur

Dependability, spirit, neatness, willingness to work, pep, personality, cooperation and participation in activities, plus a 2.3 grade point average for 2 quarters are the main qualifications by which girls are chosen to be members of Tanan-of-Spur, sophomore women's honorary. Activities include dramatics, athletics, music, debate, publications, clubs, and religious groups. The MSU chapter of Spur has a "no drinking" rule for active Spurs, and as one of the qualifications on which girls are chosen to become active Spurs.

Phi Kappa Phi

Phi Kappa Phi is a national scholastic honorary which recognizes students and faculty with superior scholarship in all fields of study. Membership in the organization includes the top 5% of the junior class, the top 10% of the senior class and outstanding faculty members. The group publishes a student-faculty directory, the "Grizzly Guide" and offers a scholarship to an outstanding junior each year.

Phi Chi Theta

Phi Chi Theta, women's business honorary, works with Alpha Kappa Psi, men's business honorary, on Bank Nite and the annual job clinic. A 2.5 grade index in business administration is required for membership in this honorary, which gives a \$20 scholarship to the girl with the highest scholarship in business administration and awards a key to the outstanding senior girl majoring in business administration.

Beta Gamma Sigma

This is an honorary based completely on scholarship. Those chosen must be in the upper 10% of all senior business students and the upper 3% of all junior business students. Members are initiated before the annual Business Administration banquet.

Eta Epsilon

Women of junior standing with 24 credits, a 2.7 grade index in the department of Home Economics, the university average for her entire school career, no F's on her record and an active interest in the Home-Arts Club are eligible to belong to Eta Epsilon, which promotes home economics on the campus.

Theta Sigma Phi

This is a women's journalistic honorary which takes an active part in J-School activities. Every year this group sponsors the Matrix Table dinner which honors an outstanding coed from each class and brings noted women journalists to Missoula. A "B" average in journalism and a "C" over-all average must be maintained for membership in this honorary.

Mu Phi

Women with a 3.5 average in music and an over-

all university average of 3.0 are eligible to be members of Mu Phi, music honorary. Their activities include presenting a musical convocation to the student body, handling the publicity for recitals given by women music students and assisting with music meets. Members are chosen on the basis of scholarship, music participation, campus activities and character.

Masquers

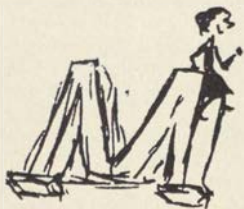
Masquers is a drama honorary for men and women which pledges students who have put in 200 hours (20 points) in 2 fields of endeavor. Masquer Royale is the highest title, given to students who have 100 points. Various activities participated in by Masquers are variety reviews, the Little Theatre Festival during Interscholastic, and an all-school musical and spring operetta with the music school.

Aquamaids

Aquamaids is a swimming honorary for women who are outstanding swimmers. They present an annual water pageant and sponsor intramural and inter-collegiate women's meets.

Women's "M" Club

Junior women having a "C" scholastic average and ten participation credits, earned in three team sports, three individual sports, and four elective sports of which not more than two may be interseasonal sports, are eligible to become members of the "M" Club, providing they meet the character



and leadership standards set by the club. The "M" Club works with WRA, sponsoring several social affairs and play days. New members are tapped at the annual "Santa-Party."

Jubileers

Jubileers is a singing group composed of twenty of the best singers in the A Cappella Choir. These vocalists not only have singing talent, but a tremendous amount of poise, personality, and stage character. This group furnishes entertainment for various campus events, besides making an annual tour throughout the state.





Your rules—made by you, changed by you, obeyed by you

Looking into the crystal ball, we see that as a woman student at Montana State University, you will have certain rules and regulations to observe.

First, the hours

Sunday, Monday, Tuesday, Wednesday, and Thursday of each week, freshmen women shall be in their homes by 10:30 p.m. Upperclassmen observe the same hours with the exception of 11:00 p.m. on Sunday. Hours are extended to 1:00 a.m. on each Friday and Saturday, and on the Thursday of final week. Nights preceding all University holidays, Thanksgiving, Memorial Day, and Trackmeet, also have 1:00 a.m. hours.

Concert hours are given to those attending concerts, ball games, plays, etc., on school nights and mean that you may stay out after the regular hour if the affair lasts longer. However, you must return immediately to your house when the affair is over.

Late per is another type of special hour regulation. It is granted under special circumstances involving departmental work, by the Associate Dean of Students, and gives women the privilege of staying out past the regular hours.

Serenade hours are given to all women students the night of their serenade and allows them to stay out until 12:00 p.m.

Senior privileges extend the hours of senior women who have "C" average with 135 credits plus 6 p.e. credits, from 10:30 until 11:30 p.m., two nights a week excluding Monday night. Out of respect to their housemother, women will inform her before 6.00 p.m. on the night they expect to use their privilege.

Ouch! A Campus

The crystal ball also foresees a penalty for infringement of the rules and regulations above, namely a **campus**. A campus is taken on Friday and Saturday nights only and means that the girl is restricted to her house from 7:00 p.m. until 6:00 a.m. during which time she may have no guests. Campuses are given for one late of 15 minutes or more, two lates totalling 15 minutes in any one quarter, or three lates whether they total 15 minutes or not in any one quarter.

The penalty for a **broken campus** is two consecutive weekends of campuses. A **deferred campus** may be obtained from the president of AWS, or if she is absent, the vice president. For each night deferred, however, an extra night of campus will be added. For no other reasons than house or dorm functions, or University authorized trips, will a campus be deferred with no added penalty .

The penalty for three campuses during a quarter will be left to the discretion of the executive board.

Shh-h . . . it's quiet hours

The crystal ball shows certain house regulations which add to harmony with other women students. Quiet hours are the rule from 8:00 a.m. to 12 noon; 1:00 p.m. to 4:00 p.m.; 7:30 to 9:30 p.m., and 11:00 p.m. to 7:00 a.m. Radios and typewriters should not be heard in adjoining rooms.



Men are not allowed in women's residences before 4:00 p.m., Monday, Tuesday, Wednesday, and Thursday; 12 noon Friday and Saturday; and 9:30 Sunday. On Monday, Tuesday, Wednesday and

Thursday, they are not allowed in women's living groups between 7:30 and 9:30 p.m., except to wait in the foyer for their dates. College women may not visit the residences of men without approved chaperonage.

For your protection—University Legislation

"The possession or consumption of intoxicating liquor in the following circumstances or places is contrary to University standards: by University students, visitors, or guests (1) when they are under 21 years of age, or (2) with or in the company of such persons of such age, or (3) with drunkenness, disorderly conduct, or the appearance thereof; and by anyone (1) on the campus or University property, except that University family dwellings are governed by separate rules, or (2) at University affairs including athletic events, or (3) at the quarters or gatherings of students.

Permitting or inviting a violation of the foregoing is itself a violation of these standards; and, at the places at which the possession or consumption of liquor is forbidden, all persons under its influence, possessing it, or evidencing disorderly conduct must be excluded."

Going Home?

As a freshman you are allowed only three weekends a quarter for going home or on other trips.

If you earn a 2.4 grade average fall quarter, you are exempt from this rule the following quarter. A 2.00 grade average winter quarter exempts you from this rule spring quarter.

When going home, you



are required to report back to your respective living group according to University hour regulations. If you are unable to return by the specified time, you are required to notify your housemother.

Sign out before visiting

Any time you wish to visit friends or relatives living out of Missoula, **upon receipt of a written invitation**, you must fill out an out-of-residence form with your housemother. This permission will be given on weekends only.

If you wish to leave on days other than Friday and Saturday to go on authorized University trips such as debates, musical tours, plays, ski trips, fraternity weekend parties, visit friends and relatives living in Missoula, or to remain in town during vacation, you must receive permission from the Associate Dean of Students.

The case of any girl failing to sign out or signing out under false pretenses will be brought before the AWS Judicial Board. Failing to sign out for a weekend will result in a campus.

When making trips, you may receive special travel permission from your housemother not more than three times a quarter to return on or before midnight in case of a late bus or train. This permission will be granted only for travel by public conveyance and if a request is made before departure.

Any time you leave the campus for more than two hours, you are required to sign out.

POLICIES

Unless requested for consideration, lates will not be discussed singly until they total a campus.

If a girl calls in or notifies her housemother when she is unable to return to her residence by the specified time, this will be taken into consideration when a campus results.

At least one extra hour of travel time should be allowed for any emergencies which might arise when a woman student is returning to her residence. In giving campuses, each case will be considered individually when a girl returns late to her residence.

The above rules are applicable to regularly enrolled undergraduate women students during the regular academic year and Missoula women who come under University jurisdiction. All exception to the above rules will be left to the discretion of the AWS Executive Board and with the approval of the Associate Dean of Students.

THE RELATIONSHIP OF JUDICIAL COUNCIL TO AWS

In cases involving violations of AWS rules exclusively, such as extreme hour violations, AWS has complete jurisdiction. In cases involving violations of university standards related to drinking, exclusively, judicial council has complete jurisdiction. However, in cases where there are violations of both AWS rules and university drinking standards, a combined board selected from the officers of AWS and the women's board of judicial council will function.

In some cases either the AWS officers or women's board may ask a representative from the other organization to help in handling a particular case. This person would probably be the president of AWS or the chairman of women's board.

Since both of the organizations handle each case individually, the kind of board selected to handle the case will depend on the nature and extent of the matter involved.

And so that you can know just how AWS functions, here is its constitution.

ASSOCIATED WOMEN STUDENTS CONSTITUTION



Preamble

We, the women students of Montana State University, acting under authority granted by the administration, in order to assume individual and community responsibility in the life and conduct of women students and believing that there is honor and dignity in student government, do ordain and establish this Constitution of the Associated Women Students of Montana State University.

Article I

Name

The name of this organization shall be the "Associated Women Students of Montana State University."

Article II

National Affiliation

This organization is affiliated with the Intercollegiate Association of Women Students.

Article III

Membership

Section I:

All women students of Montana State University shall be ipso facto members of this organization and shall be governed by the constitution.

Section 2:

The Associate Dean of Students shall act as adviser to this organization.

Article IV Organization

Section 1: Executive Board.

- a. The Executive Board shall be composed of the four elected officers; one representative from each sorority and Synadelphic; two representatives from each women's dormitory; one representative from Panhellenic.
- b. The Executive Board shall have executive, legislative and judicial powers.
 1. The Executive Board shall have the authority to make rules and regulations, and other pertinent legislation pertaining to women students. It shall have the power to interpret and enforce such legislation.
 2. The Executive Board shall have the authority to take action regarding infringement of legislation. This action shall be taken by the Executive Board itself or by the Judicial Board.
 3. The Executive Board shall foster specific activities which contribute to high academic standards, and shall promote activities which create opportunities for experience in self-government.
- c. Qualifications and duties of representatives:
 1. All representatives shall have at least sophomore standing at the time of the regular election of officers, with the exception of representatives from the freshmen dormitories.
 2. All representatives are obliged to submit

reports of any AWS rule violation to the Judicial or Executive Board. Deliberate failure to do this shall constitute grounds for removal from office by the Executive Board.

3. A representative shall send a substitute if she is unable to attend a meeting. The substitute will have the power to vote. A representative absent without a substitute obligates the organization she represents to a 25c fine, payable to the treasurer.
4. All Board members shall attend the first two meetings in spring quarter in an advisory capacity.

Section 2: Executive Council.

- a. The Executive Council shall consist of the four officers of the Associated Women Students and the Associate Dean of Women.
- b. The Executive Council shall meet regularly to discuss policies affecting all women students and to hear all cases of discipline not delegated to other authorities.

Section 3: Judicial Board

- a. The Judicial Board shall be composed of the four officers and two representatives from the Executive Board appointed each week by the vice-president. The Judicial Board shall conduct preliminary hearings of AWS violations and make recommendations to the Executive Board. The vice-president shall preside over the Judicial Board.
- b. Each member of the Judicial Board shall have one vote.

Article V

Officers

Section 1:

The officers of this organization shall be a president, vice-president, secretary, and a treasurer. All

executive authority shall be vested in the president. In case of absence of this officer, such authority shall devolve upon the vice-president, the secretary, or the treasurer in that order named.

Section 2:

The officers shall assume their duties at the first meeting of the spring quarter, but shall attend meetings from the time of election until they take over their duties. The president shall remain on the Board spring quarter in an advisory capacity.

Section 3: Qualifications and duties of officers.

a. President

1. The president of Associated Women Students shall be of junior standing at the time of the regular election and shall have served as a voting member of the Board one year previously. She shall have a scholastic average of at least a C.
2. The president shall preside over all meetings of the Associated Women Students, the Executive Board, and the Executive Council.
3. The president shall appoint chairmen of committees, appointments subject to approval by the Executive Board. The Counselor-Counselee chairman and the Handbook chairman are elected by the Executive Board from the candidates submitted by the women's living groups.
4. The president shall represent AWS at Judicial Council when called upon.

b. Vice-President

1. The vice-president shall be of at least sophomore standing at the time of the regular election and shall have a scholastic average of at least a C.
2. The vice-president shall officiate in the ab-

sence of the president, and shall succeed to the office of president in the event that office is vacated.

3. The vice-president shall be chairman of the Judicial Board.

c. Secretary

1. The secretary shall be of at least sophomore standing at the time of the regular election and shall have a scholastic average of at least a C.
2. The secretary shall keep a record of the proceedings of AWS, of the Executive Board, and of the Executive Council.
3. The Secretary shall take care of all correspondence of AWS, including IAWS correspondence.

d. Treasurer

1. The Treasurer shall be of at least sophomore standing at the time of the regular election and shall have a scholastic average of at least a C.
2. The treasurer shall make monthly reports to the Executive Board of all funds received and expended and all debts and balances as submitted to her by the auditor of the student organizations and in accordance with her own books.
3. The treasurer must sign all requisitions, contracts, and payments after they have been approved by the Board. Loans from the students' loan fund will be made by the president upon recommendation of the Associate Dean of Students and the Business Manager of the University.
4. The treasurer shall be in charge of primary and general elections.

Article VI

Meetings

Section 1:

Meetings of the association shall be held at the discretion of the president or at the request of twenty-five members of the association.

Section 2:

Regular weekly meetings of the Executive Board shall be held at a time convenient to the majority of the Board, and additional meetings may be held upon the request of the President.

Section 3:

Meetings shall be conducted in accordance with Roberts' Rules of Order.

Section 4:

Meetings shall be considered properly advertised if notices of such meetings appear in the Kaimin and are posted on the bulletin board one day before the meeting.

Article VII

Elections

Section 1: Primary Election.

- a. Primary election shall be held one week before the general election.
- b. All candidates for office must present a petition bearing ten signatures to the secretary of AWS not later than one week preceding the scheduled primary election.
- c. The two candidates for each office receiving the highest number of votes in the primary election shall become candidates for office in the general election.
- d. The primary election shall be eliminated if there are only two petitions filed for each office.

Section 2: General Election

- a. The officers shall be elected for a period of one year at a regular general election the first week of March.
- b. A majority vote shall be required for election.

Section 3:

In the event of a vacancy in the offices of vice-president, secretary, or treasurer, the office shall be filled by a member of the Executive Board elected by a majority vote of the Board.

Article VIII

Finances

The finances of the association shall be supplied from an amount appropriated by Central Board according to its budget.

Article IX

Amendments

Section 1:

The Constitution may be amended by a majority vote of all members. This vote may be taken at a mass meeting of the Association or by polling the living groups.

Section 2:

Proposed amendments to the Constitution shall be posted at least five days before a mass meeting or shall be read to each living group one week prior to the voting.

Traditional MSU Songs



UP WITH MONTANA

Up with Montana, boys, down with the foe,
Old Montana's out for a victory;
She'll shoot her backs around the faeman's line,
A hot time is coming now, oh brother mine,
Up with Montana, boys, down with the foe,
Good old Grizzly'll triumph today;
And the squeal of the pig will float on the air,
From the tummy of the Grizzly Bear.



HAIL, COPPER, SILVER, GOLD

Hail copper, silver, gold borne by our warriors bold
It's the flag of the Grizzly Bear,
See those Bruins tearing their way down the field,
We know they never will yield, Montana,
On they go and trample down the foe,
Let's go, Montana, we love the fray,
The Grizzly fight, fight, fight will bring victory
Let's go Montana, we'll win today.



OLD COLLEGE CHUMS

Old college chums, dear college chums,
The days may come, the days may go,
But still my heart to memories cling,
To those college days of long ago,
Thru youth, thru prime, and when the days
Of harvest time to us shall come,
Thru all we'll bear the memories dear,
Of those college days of long ago.