

University of Montana

ScholarWorks at University of Montana

Lady Griz Basketball Media Guides, 1978-2009

Intercollegiate Athletics

9-1-1992

Lady Griz Basketball Media Guide, 1992-1993

University of Montana (Missoula, Mont. : 1965-1994). Athletics Department

Follow this and additional works at: https://scholarworks.umt.edu/ladygrizbasketball_mediaguides

Let us know how access to this document benefits you.

Recommended Citation

University of Montana (Missoula, Mont. : 1965-1994). Athletics Department, "Lady Griz Basketball Media Guide, 1992-1993" (1992). *Lady Griz Basketball Media Guides, 1978-2009*. 17.

https://scholarworks.umt.edu/ladygrizbasketball_mediaguides/17

This Guide is brought to you for free and open access by the Intercollegiate Athletics at ScholarWorks at University of Montana. It has been accepted for inclusion in Lady Griz Basketball Media Guides, 1978-2009 by an authorized administrator of ScholarWorks at University of Montana. For more information, please contact scholarworks@mso.umt.edu.

LADY GRIZ BASKETBALL

...We've Come A Long Way!

1992-93 Media Guide

Conference Titles

1991 1986
1990 1984
1989 1983
1988 1982

NCAA Appearances

1992 1988
1991 1986
1990 1984
1989 1983



The University of
Montana

THE UNIVERSITY OF MONTANA . . . AMERICA'S MOST BEAUTIFUL CAMPUS!

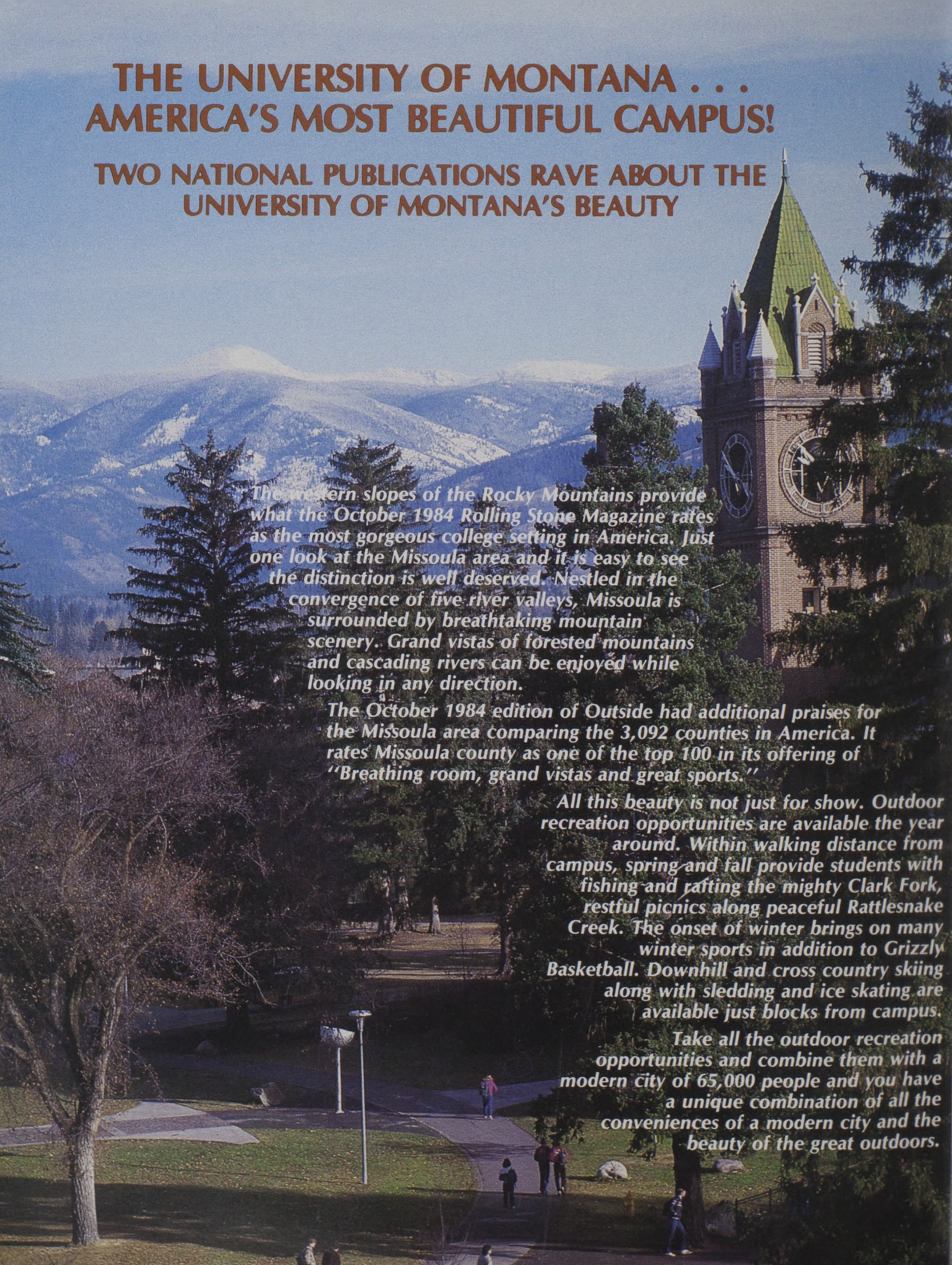
TWO NATIONAL PUBLICATIONS RAVE ABOUT THE UNIVERSITY OF MONTANA'S BEAUTY

The western slopes of the Rocky Mountains provide what the October 1984 Rolling Stone Magazine rates as the most gorgeous college setting in America. Just one look at the Missoula area and it is easy to see the distinction is well deserved. Nestled in the convergence of five river valleys, Missoula is surrounded by breathtaking mountain scenery. Grand vistas of forested mountains and cascading rivers can be enjoyed while looking in any direction.

The October 1984 edition of Outside had additional praises for the Missoula area comparing the 3,092 counties in America. It rates Missoula county as one of the top 100 in its offering of "Breathing room, grand vistas and great sports."

All this beauty is not just for show. Outdoor recreation opportunities are available the year around. Within walking distance from campus, spring and fall provide students with fishing and rafting the mighty Clark Fork, restful picnics along peaceful Rattlesnake Creek. The onset of winter brings on many winter sports in addition to Grizzly Basketball. Downhill and cross country skiing along with sledding and ice skating are available just blocks from campus.

Take all the outdoor recreation opportunities and combine them with a modern city of 65,000 people and you have a unique combination of all the conveniences of a modern city and the beauty of the great outdoors.





1992-93 Lady Griz Basketball Yearbook



Quick Facts

Location Missoula, Montana
Chartered February 17, 1893
Enrollment 10,615
Nickname Lady Griz
Colors Copper, Silver & Gold
Home Court Dahlberg Arena (9,057)
Conference Big Sky
Associate Athletic Director Kathy Noble
Assistant SID Linda K. McCarthy (406) 243-5414
Athletic Trainer Christine Fry

Head Coach Robin Selvig
Coach's Record at Montana 335-83 (14 yrs.)
Coach's Collegiate Record 335-83 (14 yrs.)
Assistant Coach Annette Whitaker-Rocheleau
Student Assistants Cheryl Brandell,
 Julie Epperly-Arledge and Shannon Cate
Basketball Office Phone (406) 243-5334
1991-92 Overall Record 23-7
1991-92 Conference Record 13-3/second
National Finish 2nd Round-NCAA

Mailing Address—Department of Intercollegiate Athletics
 The University of Montana
 Harry Adams Field House
 Missoula, MT 59812
 (406) 243-5331

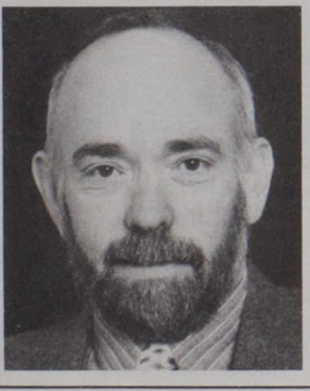
This media guide was written and edited by Linda McCarthy, UM's Assistant Sports Information Director. Cover photo by Mark Bryant. Team photo and Shannon Cate photo by Geoffrey Sutton. All other photos by Howard Skaggs, Liz Hahn, Todd Goodrich, and Chuck Scheer.

Table of Contents

2	1993 West Regional Information	15	Sherri Brooks & Jill Frohlich
3	The University of Montana	16	Jodi Hinrichs & Malia Kipp
4	UM Administration	17	Greta Koss & Ann Lake
5-6	Athletic Department Personnel	18	Kristy Langton & Lora Morast
7	1992-93 Schedule & 1991-92 Results	19	Trish Olson & Kristin Omlid
8	1991-92 Season Review	20	Kelly Pilcher & April Sather
9	1992-93 Season Outlook	21	Dawn Sievers & Lady Griz Series Records
10	Head Coach Robin Selvig	22-26	Lady Griz Record Book
11	Assistant Coaches	27	Final 1991-92 Statistics
12	1992-93 Team Photo & Roster	28-29	Big Sky Conference Information
13	Lady Griz at a Glance	30-32	Opponents Section
14	Joy Anderson & Carla Beattie		

Mick Holien

"Voice of the Lady Griz"



Mick Holien begins his eighth season as the play-by-play announcer for Lady Griz basketball. This year marks the eighth year in which KGVO Radio in Missoula has served as the official Lady Griz station.

Holien, a reporter for the Missoulian, is the former managing editor of KGVO News. In 1988, 1990 and 1991, he was named the Montana Sportscaster of the Year. He has been honored for his sports contributions by the Montana Associated Press three times (1988, 1989, 1990), and he was the AP News Broadcaster of the Year in 1987.

Holien's Lady Griz programs have finished among the best three times (1987, 1988, 1991) as finalists for the Montana Broadcasters Association Program of the Year.

In 1989, Holien was named the recipient of the Silver Gavel Award by the Montana Bar Association. The award is emblematic of educating the public about law.

A native of Spokane, Wash., Holien is married to Diane, and they have two children: their son Chris, 20, is a UM student, and their daughter Stephanie, 16, attends Big Sky High School.

Media Outlets

Mick Holien/Denny Bedard
 KGVO-AM Radio
 P.O. Box 5013
 Missoula, MT 59801
 (406) 721-1290

Bob Meseroll, Sports Editor
 Missoulian Newspaper
 P.O. Box 8029
 Missoula, MT 59802
 (406) 523-5266

George Geise, Sports Editor
 Great Falls Tribune
 Tribune Building
 Great Falls, MT 59401
 (406) 761-6666

Allen Kessler
 KYLT-AM Radio
 2701 Reserve
 Missoula, MT 59806
 (406) 728-5000

Dave Tester
 KPAX-TV
 P.O. Box 4827
 Missoula, MT 59806
 (406) 543-7109

Warren Rogers, Sports Editor
 Billings Gazette
 401 N. Broadway
 Billings, MT 59101
 (406) 245-3078

Mike Lockrem, Sports Editor
 Montana Kaimin
 The University of Montana
 Missoula, MT 59812
 (406) 243-6541

Larry Frost
 KECI-TV
 Drawer M
 Missoula, MT 59806
 (406) 721-5642

Hud Willse, Sports Editor
 Montana Standard
 25 W. Granite
 Butte, MT 59701
 (406) 782-8301

NCAA Championships



Get ready for the biggest basketball event to ever be held in the State of Montana! The NCAA Championships are coming to Missoula.

For the first time ever, the NCAA Division I Women's Basketball West Regional tournament is coming to The University of Montana's Dahlberg Arena. Montana is one of four nationwide hosts of the prestigious tournament, whose champion advances to the 1993 NCAA Women's Final Four in Atlanta, Georgia.

Montana hosts the three-game tournament March 25 and 27, 1993. Regional semifinal games will be played on Thursday, March 25, while the

Regional champion will be crowned Saturday, March 27.

Past winners of the NCAA West Regional include Stanford in 1990, '91 and '92, Maryland in 1989, Long Beach State in 1987 and '88, Southern Cal in 1984 and '86 and Georgia in 1985.

Tickets are available at The University of Montana Field House Ticket Office. Tournament packages (three games) can be purchased for \$18 for choice reserved seats and \$16 for regular reserved seats. Student packages can be bought for \$14 and \$12.

Individual game tickets will go on sale March 25 for \$10 and \$9 for adults and \$8 and \$7 for students. All seats are reserved and prices vary according to seating. Season ticket holders have the option to purchase tournament tickets with the 1992-93 Lady Griz season ticket package.

For more information concerning tickets for the 1993 NCAA West Regional tournament, please call 1-800-526-3400 or (406) 243-4051.

Members of accredited media outlets may request credentials by contacting Linda McCarthy at the UM Sports Information Office at (406) 243-5414.

The State of Montana, the City of Missoula, and The University of Montana extend a warm welcome and friendly invitation to all of the participating teams and basketball fans. Come out and support The University of Montana by attending the 1993 NCAA Division I Women's Basketball West Regional tournament.



Dahlberg Arena - Host of the 1993 NCAA Division I Women's Basketball West Regional.

West Regional Sites and Participants

1993-Montana

??
??
??
??

1992-Washington

Stanford
Southern Cal
Texas Tech
Stephen F. Austin

1991-UNLV

Stanford
Washington
Long Beach State
Georgia

1990-Stanford

Stanford
Arkansas
Mississippi
S.F. Austin

1989-Texas

Maryland
Texas
UNLV
S.F. Austin

1988-Long Beach State

Long Beach State
Iowa
Southern Cal
Washington

1987-UCLA

Long Beach State
Ohio State
Southern Cal
Mississippi

1986-Long Beach State

Southern Cal
Louisiana Tech
Long Beach State
North Carolina

1985-UCLA

Georgia
UCLA
Long Beach State
Southern Cal

1984-USC

Southern Cal
Long Beach State
San Diego State
Montana

The University of Montana



The University of Montana in Missoula is located in a mountain forest setting in beautiful Western Montana. It is halfway between Glacier and Yellowstone national parks.

Four wilderness areas are located near Missoula. The natural surroundings offer excellent opportunities for hunting, fishing, backpacking, river floating, camping and other outdoor recreational pursuits. Two excellent winter ski areas are located within minutes of the university. Several other ski areas are only a couple of hours away by car. UM owns and operates its own golf course adjacent to campus.

Chartered February 17, 1893, The University of Montana is one of the West's pioneers in education. The school opened in September 1895 with 50 students enrolling the first day. Located on 201 acres at the base of Mount Sentinel, UM has grown from 50 students and seven faculty members to a present enrollment of 10,615 and approximately 450 full-time faculty positions.

Through its history, The University of Montana has sus-

tained a high standard of academic excellence in teaching, research and service.

UM offers associate of arts degrees in two areas and bachelors in 58 fields. It offers master's degrees in 54 programs and doctoral degrees in 13.

The College of Arts and Sciences, which is the core of the university, includes a full range of programs and courses in the life sciences, physical sciences, social sciences and humanities. The college also offers curricula in interdisciplinary fields ranging from ethnic studies to interdepartmental studies.

Seven professional schools complete the academic program—Business Administration, Fine Arts, Journalism, Education, Forestry, Law, and Pharmacy and Allied Health Sciences.

The aim of the university is to provide its students with relaxing and meaningful learning experience with the best facilities possible. The administration, faculty and staff strive for this goal.

Administration

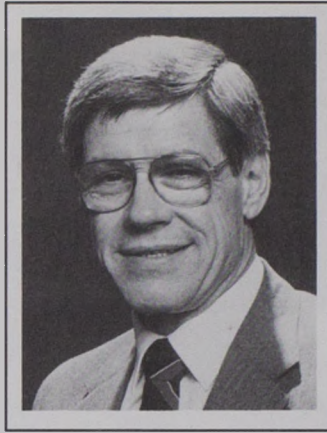
George Dennison became the 16th president of The University of Montana on August 15, 1990.

Before coming to UM Dennison was provost and vice president for academic affairs at Western Michigan University in Kalamazoo, a post he had held since 1987.

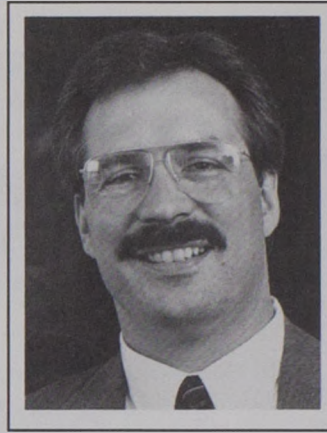
He is a former resident of Kalispell, and a UM alumnus. A history professor, he earned two degrees in that field at UM: a master's in 1963 and a bachelor's with highest honors in 1962. In 1967, he completed a doctorate in history at the University of Washington.

Before joining Western Michigan's administration, he held a number of positions at Colorado State University between 1969 and 1987. They include history professor, admissions and records director, associate academic vice president, graduate school associate dean and associate dean of the college of the arts, humanities and social sciences.

Dennison and his wife, Jane, also from Kalispell, have two children.



George Dennison
President



Bill Moos
Athletic Director

Bill Moos is in his third year as athletic director at The University of Montana. During his first two years at UM, Moos has overseen a program that has produced five Big Sky Championships and six teams that have qualified for NCAA postseason play.

Moos has been instrumental in generating revenue for Grizzly athletics by incorporating the Grizzly Athletic Association into the department and by creating a new position that concentrates on corporate sponsorships. He also established an Academic Coordinator position that began with the 1992-93 academic year.

He has twice served as Director of the Big Sky Coors Light Men's Basketball Tournament and recently was named to the NCAA Division I-AA Football Advisory Committee for the West Region.

Moos came to UM from his alma mater, Washington State, where he was an associate athletic director since 1982.

He graduated from WSU in 1973 with a degree in History. As a Cougar athlete he was an all-Pac 10 and all-Pacific Coast selection in football. He capped his college career by playing in the 1972 East-West Shrine Game.

Bill, and wife, Kendra, have three children: Christa, 12, Brittany, 8, and Bo, 3.

Kathy has been the associate athletic director at Montana the past five years. In 1989 she served as interim athletic director, overseeing two I-AA football playoff games, as well as the Big Sky Conference women's basketball tournament, and an NCAA first-round game in women's basketball.

She was instrumental in UM's bid for a Women's Western Regional Basketball Tournament, recently granted to Montana in March of 1993.

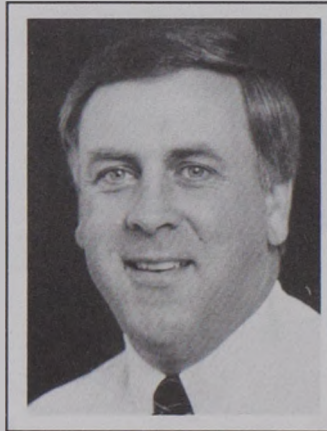
Most recently Noble was the Assistant Director of the Department of Parks, Recreation and Public Facilities in Miami, Florida.

She has 17 years of experience in college administration. She was the Associate Athletic Director at the University of Miami from 1983-86. Prior to that she was an Academic Counselor in athletics at Boise State (1982-83) and the Residence Hall Director at Washington State (1976-82).

Noble earned her B.A. degree in Social Sciences at Central Washington University in 1971. She received a Master's Degree in Counseling at Washington State in 1979 and is currently a Ph.D. candidate in Counseling at WSU.



Kathy Noble
Associate Athletic Director



Al Kempfert
*Executive Director,
Grizzly Athletic
Association*

Al is in his 15th year as Executive Director of the Grizzly Athletic Association, formerly known as the Century Club.

In 1977 Century Club raised approximately \$70,000 for intercollegiate athletics. Last year the G.A.A. generated over \$550,000 in private support with emphasis primarily on athletic scholarships, but the G.A.A. assists in all phases of athletic department operations.

He came to UM from California Lutheran University, where he had served as the Director of Alumni/Parent Relations from 1971 to 1977. He served in the U.S. Army from 1968-71 and in Vietnam from 1969-70, receiving many commendations. He is an alumnus of C.L.U., where he was a three-sport letterman and voted the Outstanding Senior Athlete in 1967.

Al has three children, Kim, 23, Matthew, 20, and David, 18.

Gary is the veteran of Montana's athletic department, and is in his 27th year at UM. He became athletic ticket manager in 1966, and was appointed Manager of Athletics Facilities and Revenue in 1978.

He manages all scheduling in Adams Field House, Washington-Grizzly Stadium and Dornblaser Track and Field in addition to overseeing the TIC-IT-E-Z Ticketing System, all athletic revenue, concessions operations, event staffing, and various other duties.

He is a native of Ronan, Montana and graduated in accounting from Missoula Business College in 1962. He gained experience in accounting and auditing before assuming his responsibilities at Montana.

Gary and his wife, Judy, have six children: Christian Ann, Dustin, Lance, Christopher, Sara and Cary.



Gary Hughes
*Manager of Athletic
Services*



Robert Lindsay
Faculty Representative

Bob is in his fifth year as UM's faculty representative to the National Collegiate Athletic Association.

Dr. Lindsay has been a faculty member at UM since 1967. He is a professor of History and served as the department chairman from 1975-78. His specialty is Early Modern European History. Lindsay won the Distinguished Teacher Award at UM in 1985. He has taught overseas for UM in France in 1970-71 and 1981.

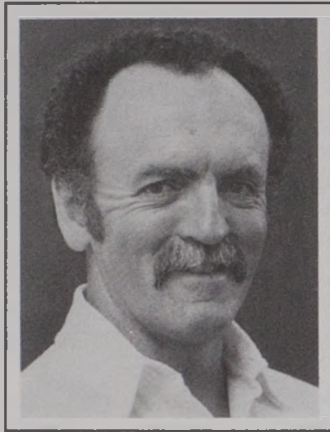
He previously taught at Ohio University. He earned a Ph.D. and M.A. at the University of Oregon and an M.A. at the University of Minnesota. He received his B.A. at Nevada-Reno in 1953.

As the NCAA Representative, he determines eligibility for UM athletes, makes NCAA rulings at the institutional level and is UM's representative to the NCAA. He has served on UM's University Athletic Committee for numerous years and was once chairman of the committee as well.

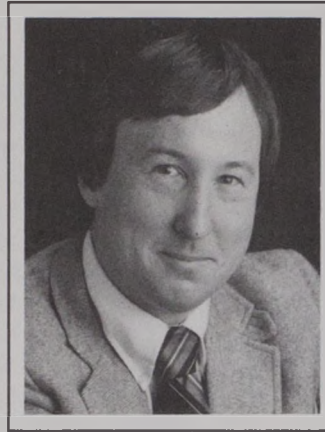
Bob and his wife, Joyce, have four children.

Athletic Personnel

Steve is beginning his 12th season as the Grizzly equipment manager. He is a native of Hamilton, Montana. He graduated from The University of Montana in 1972 with a B.S. degree in Health and Physical Education, with an emphasis in Athletic Training and Physical Therapy. He received his master's degree in 1974 at Indiana State in HPE. He served three years in the Navy from 1962-65 and was a Spanish linguist. Steve and his wife, Larae, have a son Tyler, 10, and a daughter, Meghan, 7.



Steve Hackney
Equipment Manager



Dave Guffey
Sports Information Director

Dave is in his 15th season as sports information director. His responsibilities include publications, press releases and promotions, game and cumulative statistics and research. He has won 17 district and national awards for his football and basketball media guides and programs. His 1989 UM football year-book cover was selected the best in the nation. He served as media coordinator for the Montana Special Olympics in 1979 and 1980. He was the media director for the United States Association for Blind Athletes 7th Annual National Championships in 1983. He is a member of the College Sports Information Directors of America (CO-SIDA). He is a 1975 graduate of Fresno State and received a B.A. in Journalism. Dave and his wife, Mea Andrews, have a 10-year-old son, Patrick, and a seven-year-old son, Matthew.

Dennis T. Murphy begins his 11th year as head athletic trainer at UM. Murphy graduated from Montana in 1975 with a B.S. degree in Health and Physical Education with a specialization in Athletic Training and Adaptive Physical Education. In June of 1975 he was certified by the National Athletic Trainers Association. In August of 1978 he was named assistant athletic trainer and lecturer in the Department of Athletics at the University of Arizona. In September of 1980 he accepted the position of Visiting Assistant Professor at UM. Murphy, who has been a certified trainer for 16 years, has taught numerous training-related classes, has been a guest speaker at several sports clinics and written articles for training publications. He is single.



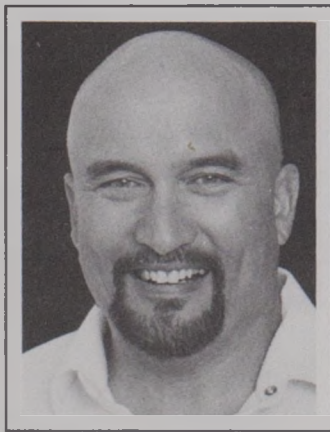
Dennis Murphy
Athletic Trainer



Bill Schwanke
*Director of
Corporate Marketing
and Media Relations*

Bill Schwanke is in his second year as the Director of Corporate Marketing and Media Relations. Some of his responsibilities include securing corporate sponsors, TV and radio marketing, and tournament director of the KYLT/Coca-Cola Classic. "Grizzly" Bill is also in his 20th year as the play-by-play announcer for UM football and men's basketball. He was the assistant director of the Grizzly Athletic Association from 1988 to 1991, and prior to that, he was the sports director at KYLT Radio (1971-88). Bill is also a former Missoulian sports editor (1969-71) and a former UM sports information director (1967-69). Bill is a 1967 graduate of UM. He and his wife, Lynn, have four children: Amber, 18, Myka, 15, Corbin, 14 and Genna, 12.

Bruce has been the strength coach at Montana for the past five years, and oversees weight training and conditioning for all athletic programs. He designs and develops weight training programs in all of the throwing events. A Grizzly football letterman (1960-63), Bruce earned his B.A. degree at UM in 1967 in Health and Physical Education. He earned a master's degree at Montana in School Administration in 1975. He is the owner and operator of Wallwork's Health and Strength Gym in Missoula. He is also a certified Montana Officials Association (MOA) official for basketball and volleyball, and officiates volleyball in the Big Sky Conference. He taught at local Loyola High School from 1973-1984, and was head football coach for three years and head track coach for six seasons. Bruce and his wife, Susan, have two daughters, Kaipolani, and Keala. Kaipolani was a letter winner at UM in track.



Bruce Wallwork
Strength Coach



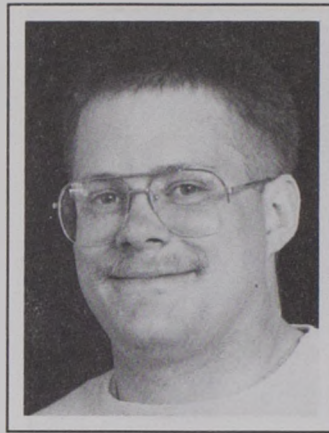
Chuck Maes
*Assistant to the Athletic
Director, Business Affairs*

Chuck joined the Grizzly athletic department in June of 1988. As assistant to the athletic director, he oversees all business affairs of The University of Montana athletic department. He also makes all departmental supply orders, manages the budget and gives budget approval. He is a 1985 graduate of UM with a B.A. degree in Business Administration, graduating with degrees in Accounting and Management. He came to work at Montana immediately after graduation from his alma mater as an accountant. In that capacity he was responsible for financial transactions in Intercollegiate Athletics and the Plant Fund accounting per state and local policies. He graduated from Anaconda High School in 1978 and was a track letterman as a prep. His wife's name is Brenda.

Athletic Personnel



Linda McCarthy
*Assistant Sports
Information Director*



Rob Stack
*Assistant Equipment
Manager*



Chris Fry
*Assistant Athletic
Trainer*



Loren Flynn
*Assistant Manager,
Athletic Services*



Cathy Tvedt
Basketball Secretary



Jane Felstet
Administrative Secretary



Rae Proctor
*Administrative
Assistant*



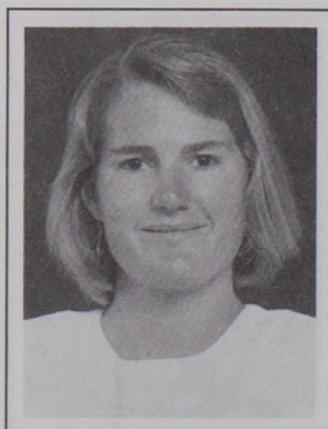
Cindy Hodgman
*Sports Information
Secretary*



Patty Dwight
*Administrative Asst.,
Business Office*



Cathy Grothe
Promotions Director



Marie Hibbard
Academic Advisor



Ray Ekness
*Director/Producer,
Sportsweek*



1991-92 Lady Griz Results



Overall Record	Big Sky Record	Opponent	UM-Opp.	Attend.	UM High Scorer/Rebounder
1-0		\$ Providence	95-94 OT	500	Lake 21/Cate 12
1-1		\$ Hawaii	62-64	427	Cate 25/Hinrichs 13
1-2		\$ Louisiana Tech	66-70	486	Cate 30/Cate, Lake 8
2-2		# Texas Southern	66-45	3057	Cate, Hinrichs 12/Hinrichs 8
3-2		# Cal-Berkeley	69-53	3858	Cate 38/Lake 8
4-2		@ Gonzaga	76-55	426	Cate 36/Hinrichs 11
5-2		Oregon (22nd)	101-69	3032	Cate 29/Cate 11
6-2		@ Southern Utah State	84-54	189	Hinrichs 21/Hinrichs 11
7-2		@ Brigham Young	61-53	256	Lake 23/Hinrichs 15
7-3		@ Utah	76-78 2OT	871	Lake 19/Hinrichs 14
8-3	1-0	@ Weber State*	62-55	145	Hinrichs 17/Hinrichs 13
9-3	2-0	@ Idaho State*	71-52	400	Hinrichs 13/Hinrichs 12
10-3	3-0	Eastern Washington*	82-69	6059	Lake 18/Lake, Hinrichs 8
11-3	4-0	Montana State*	74-31	5184	Beattie 16/Hinrichs 11
12-3	5-0	@ Idaho*	78-59	371	Cate 19/Frohlich 9
13-3	6-0	@ Boise State*	64-47	9556	Lake 14/Lake 15
14-3	7-0	Northern Arizona*	72-34	2526	Lake, Beattie 14/Four with 6
15-3	8-0	Nevada*	77-52	3874	Cate 23/Hinrichs 15
16-3	9-0	Idaho State*	81-55	2686	Cate 20/Hinrichs 9
17-3	10-0	Weber State*	69-55	3720	Cate 15/Three with 6
18-3	11-0	@ Eastern Washington*	70-56	906	Hinrichs 18/Lake 12
18-4	11-1	@ Montana State*	71-74	3854	Cate 17/Hinrichs 8
18-5	11-2	Boise State*	77-81	4686	Cate 34/Lake 11
19-5	12-2	Idaho*	76-60	3121	Cate 21/Lake 16
19-6	12-3	@ Nevada*	73-80	237	Cate 23/Cate 7
20-6	13-3	@ Northern Arizona*	76-58	102	Cate 22/Lake 13
21-6		& Montana State	73-69	3337	Cate 39/Cate 8
22-6		& Boise State	82-67	4404	Cate 36/Hinrichs 10
23-6		% Wisconsin (First Round)	85-74	8353	Cate 34/Cate 11
23-7		% USC (Second Round)	59-71	1059	Cate 26/Lake 7

\$--Rainbow Wahine Classic (Honolulu, Hawaii)

#--Domino's Pizza Classic (Missoula, Mont.)

*--Big Sky Conference Game

&--Big Sky Championships (Boise, Idaho)

%--NCAA Championships (Madison, Wisc. & Los Angeles, Calif.)

1992-93 Lady Griz Schedule

DATE	OPPONENT	TIME (MST)	Date	OPPONENT	TIME(MST)
Fri., Nov. 20	Portland AAU (Exhibition)	7:30 p.m.	Mon., Feb. 1	Southern Utah	7:30 p.m.
Mon., Nov. 23	Australians (Exhibition)	7:30 p.m.	Sat., Feb. 6	Montana State* (TV)	7:35 p.m.
Thurs., Dec. 3	Brigham Young	7:30 p.m.	Fri., Feb. 12	@ Eastern Washington*	8:00 p.m.
Sat., Dec. 5-	@ Providence Tournament	12 & 2 Sat.	Sat., Feb. 13	@ Idaho*	8:00 p.m.
Sun., Dec. 6	Montana, Siena, George Mason	10 & 12 Sun.	Thurs., Feb. 18	Northern Arizona*	7:30 p.m.
Fri., Dec. 11	@ Southwest Missouri State	6:05 p.m.	Sat., Feb. 20	Weber State*	7:30 p.m.
Sun., Dec. 20	Gonzaga	2:00 p.m.	Thurs., Feb. 25	@ Boise State*	7:30 p.m.
Mon., Dec. 21	Washington State	7:30 p.m.	Sat., Feb. 27	@ Idaho State*	7:30 p.m.
Tues., Dec. 29-	Western States Showdown	6:30 & 9:00 p.m.	Fri., March 5	@ Montana State* (TV)	7:30 p.m.
Wed., Dec. 30	12-29 UM vs. Western Carolina; Niagara vs. Rhode Island		Fri., March 12-	Big Sky Conference Tournament	TBA
	12-30 Tuesday's Losers at 6:30; Winners at 9:00		Sat., March 13	hosted by regular-season champion	
Sun., Jan 3	@ Drake	3:00 p.m.	Wed., March 17	NCAA First Round Games	TBA
Wed., Jan 6	@ Iowa State	6:00 p.m.	March 20 or 21	NCAA Second Round Games	TBA
Sun., Jan. 10	Portland	2:00 p.m.	Thurs., March 25	NCAA West Regional Tournament	
Fri., Jan. 15	Idaho*	7:30 p.m.	& Sat., March 27		TBA
Sat., Jan. 16	Eastern Washington*	7:30 p.m.	Sat., April 3 &	NCAA Final Four (The Omni)	TBA
Thurs., Jan. 21	@ Weber State*	7:00 p.m.	Sun., April 4	Atlanta, Georgia	
Sat., Jan. 23	@ Northern Arizona*	7:00 p.m.			
Fri., Jan. 29	Boise State* (TV)	7:05 p.m.			
Sat., Jan. 30	Idaho State*	7:30 p.m.			

*--Big Sky Conference Game

Home Games in Bold

It was a season of intense ups and downs for the Montana Lady Griz.

The season began in the tropics of Hawaii, where Montana opened with a 1-2 record at the Rainbow Wahini Tournament. The Lady Griz beat Providence by one point in overtime, then lost to Hawaii and Louisiana Tech. Senior Shannon Cate was the only Montana player named to the all-tournament team. Montana lost sophomore forward Trish Olson in that tournament with a broken bone in her foot. UM applied for a medical redshirt for Olson.

Then the Lady Griz returned home to host the final Domino's Pizza Classic Tournament. Montana defeated Texas Southern and Cal-Berkeley for its 10th consecutive tournament title. Both Cate and sophomore Jodi Hinrichs were named to the all-tournament team, and Cate earned the MVP honors for the second time in her career.

After a road win over Gonzaga and a home win over 22nd-ranked Oregon, Montana hit the road for a Utah swing, and trouble began. The Lady Griz picked up a 30-point win over Southern Utah State, then the next day during practice at BYU, Cate dislocated her shoulder, an incident that was to occur seven times during the season.

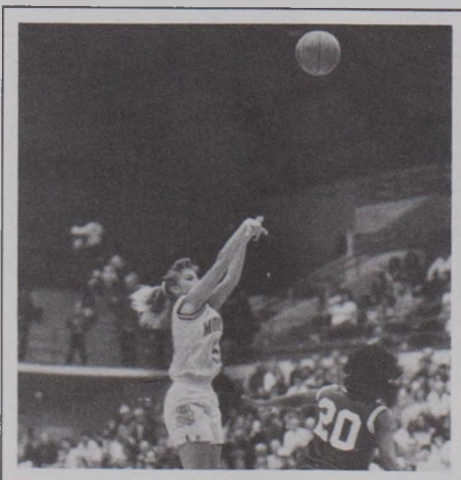
That Lady Griz went on to defeat BYU by seven points without Cate, then lost to Utah 78-76 in a double overtime game. It was the first time Utah beat Montana in eight tries.

The Lady Griz opened the Big Sky season without Cate, and handily defeated Weber State and Idaho State at home. Hinrichs controlled both games leading all scorers and rebounders.

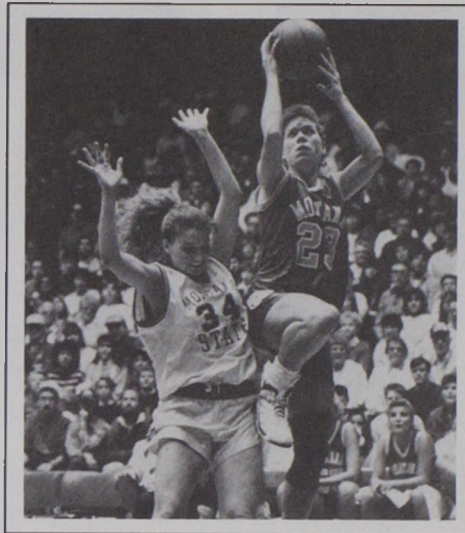
Cate then returned after a four-game hiatus, the only time she had ever missed a game in her career. Montana downed three league opponents, then headed to Boise, Idaho, where a Big Sky record crowd of 9,556 fans awaited the Lady Griz.

Cate dislocated her shoulder again, and Montana rose to the challenge, winning 64-47.

Montana then went on to win four more



Julie Epperly ran the offense for Montana for three years.



Kristy Langton going up against Montana State's Mindy Casagranda in Bozeman.

conference games before Cate dislocated her shoulder again against Eastern Washington. This time she returned to the game.

Then the Lady Griz traveled to Bozeman, Mont., with a 67-game conference winning streak dating back to 1988. It was the longest current winning streak in Division I women's basketball. With five minutes to go in the game, Cate dislocated her shoulder again. She returned at the 30-second mark, but couldn't score another bucket. Montana returned home with a 74-71 loss to the Bobcats and the loss of senior point guard Julie Epperly, who broke her wrist in the second half.

But, Epperly came back to action with a soft cast on her wrist, and Montana lost to Boise State 81-77 at home. Then the Lady Griz lost to Nevada 80-73 on the road. It was the first time ever that Montana had lost to Nevada in 13 meetings.

In the last game of the regular season, Cate scored 22 points in a 76-58 win over Northern Arizona in Flagstaff. In that game, Cate became the Big Sky's all-time leading scorer among both men and women. She became the only female player in the league to score more than 2,000 career points.

For the first time since 1985, Montana had to travel to the Big Sky Conference Championships. Boise State earned the hosting rights to the tournament, as Montana lost three league games to MSU, Boise State and Nevada.

The Lady Griz downed Montana State 73-69 in the first game, and Cate led all scorers with 39 points. Then Montana beat Boise State 82-67 in the championship game behind Cate's 34 points. Cate again dislocated her shoulder in that game, but pushed it back into place without leaving the court.

Cate was unanimously named tournament MVP for the third straight year after breaking the single-game and two-game scoring records, plus six other tournament

records. Epperly also earned all-tournament honors, even with a broken wrist.

In addition to all-tournament accolades, Cate and Epperly were named to the Big Sky all-conference team. Sophomore forward Ann Lake was also named to the all-conference team.

For the fifth straight year and the eighth overall, Montana advanced to the NCAA playoffs. Ironically, it was the first time since the 1982-83 season that Montana had to travel for the first round.

Madison, Wisconsin was the site of the first-round match-up between Montana and the 20-8 Lady Badgers of Wisconsin. It was UW's first appearance in the NCAA women's basketball tournament. Montana dominated the game, winning 85-74 in front of an NCAA first-round record-crowd of 8,353 fans. Cate scored 34 points, the highest individual performance among all 16 first-round games.

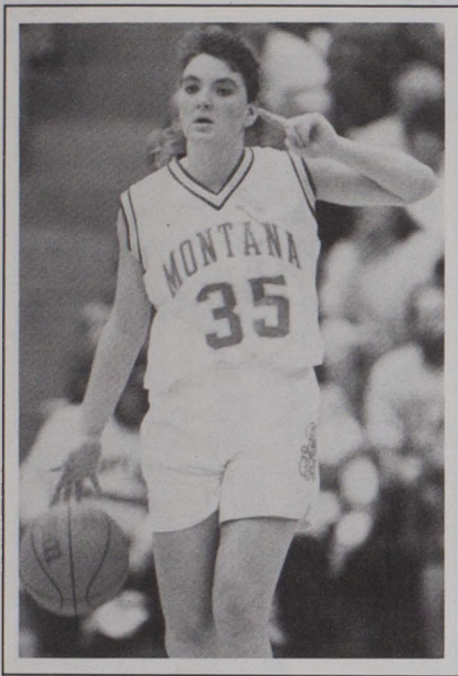
Then Montana traveled to Los Angeles to take on 21-7 Southern Cal. Montana led 30-28 at the half, but USC's Tammy Story poured in 23 second-half points to lead the Lady Trojans to a 71-59 win over Montana. Cate dislocated her shoulder for the seventh time, but returned to the game after missing only one minute.

Montana head coach Robin Selvig was named District 7 Coach of the Year and Big Sky Conference Coach of the Year. It was his seventh district award and his ninth conference award.

Closing out the remarkable season was the naming of Cate to the 12-member Kodak All-American team, the most prestigious award in women's basketball. Cate became the first Big Sky player and only the second District 7 player to be named a Kodak All-American. A three-time team MVP and two-time Big Sky MVP, Cate left Montana with 14 school records, including the all-time scoring and rebounding records. Probably the best player in the Lady Griz history, Cate will be remembered by her determination and fortitude and her ability to make a shot from nearly anywhere on the court.



Shannon Cate cut down the nets after leading Montana to the Big Sky title in Boise.



Junior point guard Kelly Pilcher returns to run the offense for the Lady Griz.

As The University of Montana approaches its 100th birthday in February, this year will be another stepping stone for the Lady Griz. For the first time ever, Montana will host the 1993 Division I Women's Basketball West Regional tournament, the biggest basketball event to ever come to the State of Montana. If Montana advances to the regional, it would be only the second time in the history of the program.

Although Montana lost two seniors to graduation last year, the Lady Griz return an extremely balanced and competitive team to carry on the tradition of years past.

Returning for head coach Robin Selvig, who is in his 15th year with the Lady Griz, are one senior, six juniors, four sophomores and four freshman. Tremendous talent and an abundance of energy can be found in this year's team, and Selvig is excited about his team's symmetry.

"We are very lucky this year because we have an extremely balanced team and a lot of talent," he said. "There are going to be a lot of battles for position because all of our players are qualified. It's going to be interesting to see how this team emerges."

Depth is the key for Selvig and the Lady Griz, as the roster lists six guards, six forwards and three centers. In addition, Selvig's players are versatile and able to switch positions if necessary.

Guards: Montana's guards include senior Joy Anderson, juniors Kelly Pilcher and Kristin Omlid, sophomores Carla Beattie and Dawn Sievers and freshman Sherri Brooks.

Pilcher will start at point guard, as she played a significant back-up role to Julie Epperly last season, and Anderson, Montana's only senior, will most likely resume her starting role at the two guard position.

Selvig can look to any of his guards to fill either of the guard positions.

Beattie or Sievers will probably fill this year's back-up role at the point. Beattie shoots the ball extremely well and will pull up quick for the three-pointer. Sievers is yet to be tested as she redshirted last season after transferring from

Idaho, but her quick, aggressive play and excellent defense will help her in position.

Possible back-ups at the two guard position will be Omlid and Brooks. Omlid is one of Montana's best shooters and most experienced players. Brooks is Selvig's quickest player and could also play the point guard position.

"We have a lot of talented guards this season," Selvig said. "We're quicker, we play smarter on the perimeter, and I think we'll have a better running game this season."

Forwards: Montana will have to replace Kodak All-American Shannon Cate, but Selvig is happy to return all-Big Sky player Ann Lake and junior Trish Olson, who was forced to redshirt last season due to an injury. Selvig also returns sophomores Kristy Langton and Lora Morast and two newcomers: freshmen Greta Koss and April Sather.

Langton, who started five games at the three forward last year, may fill the starting role left vacant by Cate, and Lake will most likely keep her starting role at the four forward. However, Olson will have a significant impact at either of those positions, and Morast has improved dramatically. Both Koss and Sather have the ability to contribute also.

"Greta has great hands and instincts and April is very athletic and has tremendous potential," Selvig said. "Both of them could have an impact on this team early on."

"We are very solid at the forward positions also," he said. "We have three veterans from last year, and we have excellent depth. I think we will be able to do some things this year that maybe we couldn't before. Since we have a lot of depth, we'll be able to do a lot of substituting, which will keep us fresh and allow us to run more."

Centers: Selvig is excited about his center position, as two veterans return to battle for playing time. Juniors Jodi Hinrichs and Jill Frohlich dominated in blocking and rebounding last year, and this year they will be joined by freshman Malia Kipp.

Hinrichs, who suffered a broken nose in the preseason, will be challenged by Frohlich for the starting role.

"We will be very deep at the center position again this year," Selvig said. "Jodi keeps improving and has an excellent work ethic, and Jill has gotten herself into great physical condition. She is faster, quicker and in much better shape. Malia has good basketball savvy, and I think we could fit her in at either the five or the four. However, because of our depth, I think it may be difficult for the freshmen to step up right away."

"Although we only have one senior on the team this year," Selvig said. "We've got more experience than what may appear. Seven of our fifteen players have a redshirt year to their advantage, and I think that really helps us."

Schedule: Another exciting schedule will challenge the Lady Griz this season. Seven teams on the schedule are teams Montana has not met before.

The highlight of this year's schedule is a road game in early December with Southwest Missouri State, a 1992 NCAA Final Four participant which is expected to be good again this year. Montana will make two other exciting trips in the pre-conference season. The Lady Griz will travel to Providence, Rhode Island for the Clearly Canadian Classic, in which Providence, Siena and George Mason will also participate. Then in early January, Montana will travel to Iowa to take on Drake and Iowa State.

This year's Western States Showdown features three teams unknown to Montana and the West. Niagara, Rhode Island and Western Carolina will travel to Missoula for the annual event to be held on December 29 and 30 this year.

"We've got a lot of quality teams on our schedule this season," Selvig said. "We have not played on the East Coast before, and we certainly have never played in the Northeast."

Montana's home opener is December 3 against Brigham Young. After the Providence tournament, Montana will host Gonzaga and Washington State followed by the Western States Showdown. After the Iowa trip, the Lady Griz will return home to host Portland before opening the Big Sky season on January 15.

"Once again, we have a strong schedule," Selvig said, "and we will be well-tested going into conference action. BYU won 20 games last year and has been picked to win its league, and Gonzaga, Washington State and Portland will be much improved over last year."

With the loss of Nevada to the Big West Conference, Big Sky action will consist of only 14 games.

Big Sky: With the return of its two Bulgarians, Boise State is expected to make another strong showing. Montana State lost Sarah Flock, but Anna Wherry returns at the point guard and Cass Bauer returns at center. Idaho lost Krista Smith and Kelly Moeller, but Brenda Kuelthau and Jennifer Clary return for the Vandals. Eastern Washington returns Freshman of the Year Keri Schwenke, and Northern Arizona returns four starters. Both Idaho State and Weber State return with 10 new players this season.

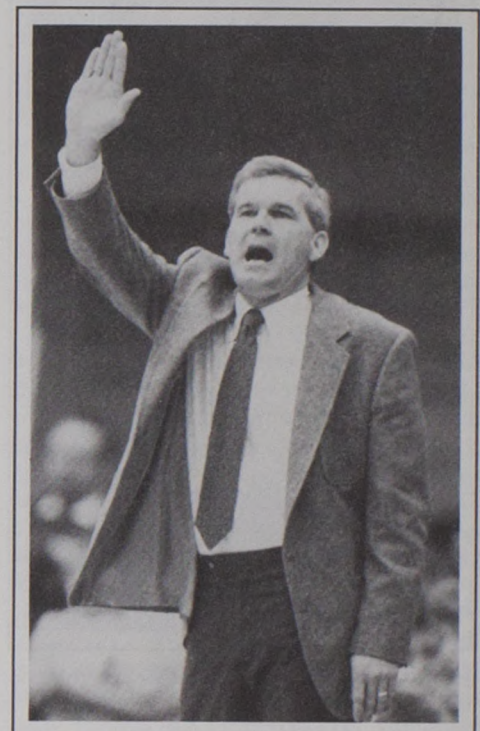
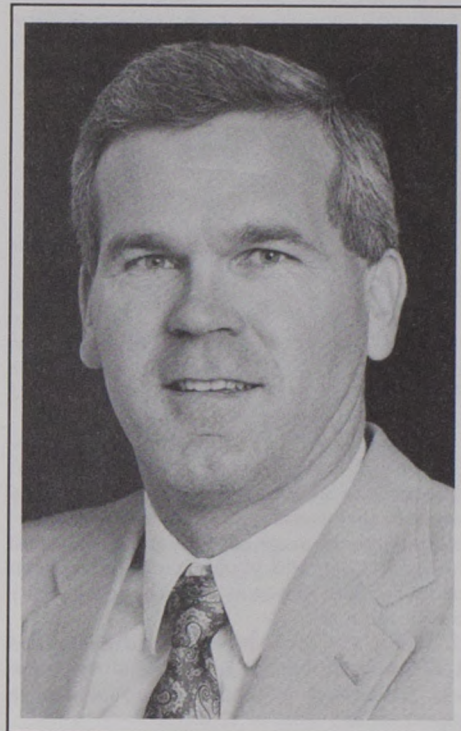
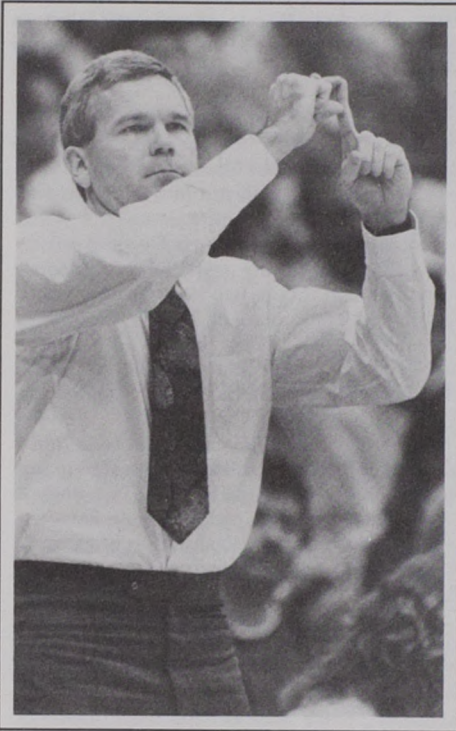
"Boise State is definitely the front-runner this year," Selvig said. "They were very strong last year, and they return both Varbanova and Torrolova. They've got a good team, and you've got to beat them to win the title."

"The Bobcats will still be good even though they lost Flock," he said. "They've got everyone else back. After that, there's a lot of new faces out there. Idaho lost Moeller and Smith, and that's a lot to lose. Idaho State had a good recruiting year, and NAU is going to be a lot better. I think the competition will be pretty even this year."

Montana caps the 1992-93 season, hosting the West Regional tournament on March 25 and 27.



Junior forward Ann Lake is Montana's only returning Big Sky all-conference player.



335-83, 14 Years

Robin Selvig begins his 15th year as head coach of a very successful program, one that he built from the bottom up. When Selvig began coaching at UM in 1978, women's basketball was not well known. Today, the Lady Griz are a nationally prominent team due to Selvig's talent and work ethic.

Known as "one of the best kept secrets in the country," according to Street & Smith's basketball magazine, Selvig is the winningest basketball coach in Montana history. Seventh in NCAA Division I women's basketball win-loss percentage (.801), he follows Leon Barmore (Louisiana Tech), Joan Bonvicini (Long Beach State), Vivian Stringer (Iowa), Jody Conrard (Texas), Gary Blair (S.F. Austin) and Joe Ciampi (Auburn).

Since Selvig took over the helm in 1978, he has been named the league Coach of the Year nine times (1983, 84, 86, 87, 88, 89, 90, 91, 92) and the District VII Coach of the Year seven times (84, 85, 88, 89, 90, 91, 92). In 1991 he was one of three finalists for the national Coach of the Year award.

Selvig has guided the Lady Griz to 139 wins and only nine losses against conference foes since the Mountain West Conference was formed in 1982, and he has led them to 12 20-win seasons in-a-row. His teams have won conference titles in eight of the last 10 seasons.

Two years ago Selvig broke the 300-win barrier against Northern Arizona in January, and he is the winningest women's coach in the Big Sky Conference with a winning percentage of .939 (139-9) in league games.

Selvig and the Lady Griz are a Missoula favorite, averaging 3,800 fans per home game in 1991-92, a new record attendance for Montana. Last year Montana was seventh in the nation among Division I schools in attendance. When Selvig began coaching at UM in 1978, the Lady Griz averaged just a little over 200 fans per game.

Selvig's success is evident in that his teams have advanced to post-season action the last 11 consecutive years, including four NCAA second-round games and a regional appearance.

Selvig recently concluded a two-year stint as the director of the Montana Special Olympics.

Selvig played the guard position for Montana from 1971 to 1974. He was an all-conference pick as a senior and was selected the winner of the John Eaheart Award, given annually to the most outstanding defensive player. That same year he was awarded the school's top athletic award, the Grizzly Cup. In 1983 Selvig was inducted into the Grizzly Basketball Hall of Fame.

He earned his bachelor's degree in health and physical education at UM in 1974.

Selvig came to UM from Plentywood High School near his hometown of Outlook, Mont. After graduating from college, he returned home to coach girls' basketball at Plentywood High from 1975 to 1978, where he compiled a record of 38-24.

His brother, Doug Selvig, was a four-year letterman for the Grizzly basketball team in the early 80s, as was his sister Sandy (Sullivan).

Selvig is married to Janie, and they have two sons, Jeff 12, and Dan 9.

Selvig's Year-By-Year Records

1978-79	13-13
1979-80	19-10
1980-81	22- 8
1981-82	22- 5
1982-83	26- 4
1983-84	27- 4
1984-85	22-10
1985-86	27- 4
1986-87	26- 5
1987-88	28- 2
1988-89	27- 4
1989-90	27- 3
1990-91	26- 4
1991-92	23- 7

TOTALS 335-83



Assistant Coach Annette Whitaker-Rocheleau



Annette Whitaker-Rocheleau is in her 12th season as an assistant basketball coach at Montana under Robin Selvig. She, too, has been instrumental in bringing the Lady Griz program into national prominence. She was Montana's junior varsity coach her first two years, and now she assists Selvig with all coaching duties including recruiting, game strategy, conditioning and scouting. Her recruiting has been very valuable to the state of Montana as 14 of UM's 15 players are from Montana.

Before she was appointed assistant coach, Whitaker-Rocheleau was a graduate assistant to Selvig for two years.

Prior to joining the coaching ranks, Whitaker-Rocheleau was a two-year starter at point guard for the Lady Griz in 1979 and 1980. Team captain during both years, she was selected UM's Most Inspirational as a senior.

She was also a basketball standout at Wenatchee Valley Junior College, where she led her teams to two state junior college championships. She was

also captain of her team as a sophomore.

Whitaker-Rocheleau played basketball at Cashmere High School in Cashmere, WA from 1974 to 1977, where she also earned four letters in tennis in high school.

A native of Wenatchee, Wash., Whitaker-Rocheleau received her bachelor's degree from UM in health and physical education in 1982.

She served as the assistant director of the Montana Special Olympics for the last two years in-a-row.

Annette is married to Kevin Rocheleau, a former Grizzly basketball player who played with Lady Griz coach Robin Selvig.



Cheryl Brandell-Student Assistant



Another former Lady Griz player, Cheryl Brandell begins her third season as a student assistant coach under Robin Selvig and Annette Whitaker-Rocheleau. She assists with all coaching duties, both on and off the court.

Brandell came to Montana from Olympia, Wash., in 1984 and was a four-year starting point guard for Coach Selvig. She was a two-time recipient of the Shannon Green Most Inspirational award and a three-time all-Big Sky selection. Brandell missed the last ten games of her junior year due to a knee injury. She left UM as the ninth leading scorer with 980 career points and is third in assists with 424.

Brandell was the league MVP as a junior at Olympia High School but missed her senior year because of her first knee injury.

Cheryl played European basketball for a team in Ireland for five months in 1990, but returned to the United States because of a knee injury. While she was in Ireland, Brandell coached a girls' high school club team and gave coaching lessons to children from ages seven to 18 at a community center.

Brandell coached the girls' sophomore team at Hellgate High School in Missoula in the fall of 1991.

She will graduate with a B.A. degree in Special Education.

Shannon Cate - Student Assistant



Montana's most successful basketball player returns to the court as a member of Robin Selvig's coaching staff. Cate will assist in all coaching aspects and will be a prime recruiter for the Lady Griz.

Cate was the Big Sky Conference's first-ever Kodak All-American, after leading Montana to a 103-18 overall record and a 61-3 league mark from 1988-92. She was a three-time District 7 Kodak All-American, a two-time Big Sky MVP, a three-time Big Sky tournament MVP, and a three-time Lady Griz MVP. She was also a two-time Big Sky all-academic pick.

Over the course of her four-year career, Cate averaged 18.7 points, 7.6 rebounds and 3.6 assists per game. She left the court as the Big Sky's all-time leading scorer among both men and women with 2,172 career points.

She owns 14 school records and nine league records, and was consistently ranked among the top Division I players in the country in scoring, field goal percentage and free throw percentage.

Cate was a three-time state tournament MVP for her Billings Central prep team. A native of Billings, she was also a Montana USA Today Player of the Year.

Cate recently returned from a short stint with a Spanish national basketball team due to a nagging shoulder injury. Cate dislocated her right shoulder and had surgery in April of 1991, then she re-dislocated it seven times during her senior season before she had her second surgery in April of 1992.

Cate will graduate this year in Business Administration.

Julie Epperly-Arledge - Student Assistant



A two-time Big Sky all-conference and all-tournament point guard, Julie Epperly-Arledge returns to the court this season as one of Selvig's student assistant coaches. She will help facilitate the film exchange, in addition to helping with game strategy, travel arrangements and recruiting.

Epperly-Arledge ran the offense for Montana for three years, starting 90 consecutive games dating back to the fall of 1989. As a junior she was Montana's Outstanding Defensive Player, and as a senior she was the recipient of the Shannon Green Most Inspirational Award.

Originally a walk-on, Epperly-Arledge was a very consistent player who averaged 25 minutes per game last season. She averaged 5.3 points and 4.0 assists per game last year as a senior. She made her mark in the record book, as she is second on the all-time assist list with 488 career passes. Epperly-Arledge was a three-sport standout at Flathead High School in Kalispell. She was the Braves' team MVP in basketball as a senior, was a two-time team MVP in volleyball and an all-state selection in volleyball, track and basketball.

Epperly-Arledge is pursuing a degree in athletic training and physical education. She married Aaron Arledge in August of 1991.



Back Row L-R: Athletic Trainer Chris Fry, Lora Morast, Ann Lake, Malia Kipp, April Sather, Trish Olson, Jodi Hinrichs, Jill Frohlich, Greta Koss, Kristy Langton, Joy Anderson, Head Coach Robin Selvig, Assistant Coach Annette Whitaker Rocheleau. Front Row L-R: Kristin Omlid, Kelly Pilcher, Carla Beattie, Sherri Brooks and Dawn Sievers.

THE UNIVERSITY OF MONTANA

1992-93 Lady Griz Roster

No	Name	Pos.	Ht.	Yr.	Exp.	Hometown/Previous School
10	Kristin Omlid	G	5-10	JR	2V/RS	Stevensville, Mont./Stevensville HS
11	Carla Beattie	G	5-7	SO	1V	Philipsburg, Mont./Granite HS
12	Joy Anderson	G	5-10	SR	3V	Hutchinson, Minn./Hutchinson HS
15	Greta Koss	F	6-0	FR	HS	Malta, Mont./Malta HS
22	Sherri Brooks	G	5-9	FR	RS	Livingston, Mont./Park County HS
23	Kristy Langton	G-F	5-11	SO	1V/RS	Stevensville, Mont./Stevensville HS
25	Lora Morast	F	5-11	SO	1V/RS	Kalispell, Mont./Flathead HS
31	Trish Olson	F	6-2	JR	2V/RS	Missoula, Mont./Big Sky HS
33	Dawn Sievers	G	5-7	SO	TR/RS	Miles City, Mont./University of Idaho
35	Kelly Pilcher	G	5-7	JR	2V	Missoula, Mont./Big Sky HS
41	April Sather	F	6-1	FR	HS	Havre, Mont./Havre HS
43	Ann Lake	F	6-0	JR	2V/RS	Missoula, Mont./Big Sky HS
45	Jodi Hinrichs	C	6-3	JR	2V	Fairfield, Mont./Fairfield HS
53	Malia Kipp	F-C	6-1	FR	HS	Browning, Mont./Browning HS
55	Jill Frohlich	C	6-3	JR	1V	Missoula, Mont./Hellgate HS

Head Coach: Robin Selvig (Montana, 1974)/(335-83, 14 Seasons)

Assistant Coach: Annette Whitaker-Rocheleau (Montana, 1982)/(11th Season)

Student Assistants: Cheryl Brandell, Shannon Cate & Julie Epperly-Arledge

Associate Athletic Director: Kathy Noble

Sports Information Director: Linda McCarthy

Athletic Trainers: Chris Fry & Linda Mendel

Alphabetical Roster:

Anderson, Joy
 Beattie, Carla
 Brooks, Sherri
 Frohlich, Jill
 Hinrichs, Jodi
 Kipp, Malia
 Koss, Greta
 Lake, Ann
 Langton, Kristy
 Morast, Lora
 Olson, Trish
 Omlid, Kristin
 Pilcher, Kelly
 Sather, April
 Sievers, Dawn

Roster by Year:

Senior (1) Joy Anderson
 Juniors (6) Jill Frohlich
 Jodi Hinrichs
 Ann Lake
 Trish Olson
 Kristin Omlid
 Kelly Pilcher
 Sophomores (4) Carla Beattie
 Kristy Langton
 Lora Morast
 Dawn Sievers
 Freshmen (4) Sherri Brooks
 Malia Kipp
 Greta Koss
 April Sather

Pronunciation Guide:

(FRO-Lick)
 (HINE-Ricks)
 (OM-Lid)
 (BEE-Dee)
 (MORE-Ast)
 (SEA-Vers)
 (Ma-LEE-A)
 (SAY-Ther)



#10 Kristin Omlid
5-10 Jr. Guard
Stevensville, Montana



#11 Carla Beattie
5-7 So. Guard
Philipsburg, Montana



#12 Joy Anderson
5-10 Sr. Guard
Hutchinson, Minnesota



#15 Greta Koss
6-0 Fr. Forward
Malta, Montana



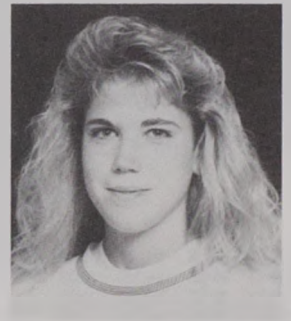
#22 Sherri Brooks
5-9 Fr. Guard
Livingston, Montana



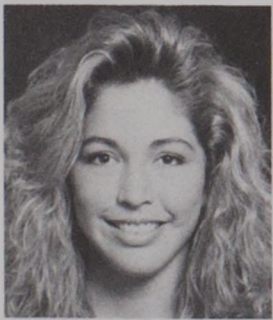
#23 Kristy Langton
5-10 So. Forward
Stevensville, Montana



#25 Lora Morast
5-11 So. Forward
Kalispell, Montana



#31 Trish Olson
6-2 Jr. Forward
Missoula, Montana



#33 Dawn Sievers
5-7 So. Guard
Miles City, Montana



#35 Kelly Pilcher
5-7 Jr. Guard
Missoula, Montana



#41 April Sather
6-1 Fr. Forward
Havre, Montana



#43 Ann Lake
6-0 Jr. Forward
Missoula, Montana



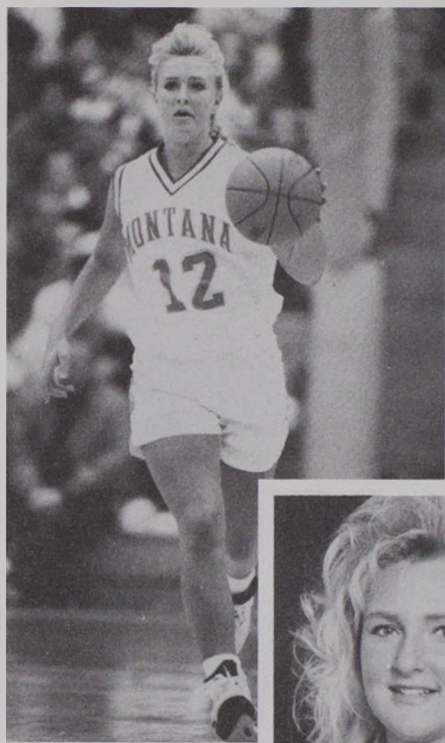
#45 Jodi Hinrichs
6-3 Jr. Center
Fairfield, Montana



#53 Malia Kipp
6-1 Fr. Center
Browning, Montana



#55 Jill Frohlich
6-3 Jr. Center
Missoula, Montana



12 JOY ANDERSON

5-10 Senior, Guard Hutchinson, Minnesota

Montana's lone senior this season, Joy Anderson will be looked to for leadership and consistency. One of Montana's most unique players, Anderson is the only out-of-state Lady Griz and the only left-handed athlete on the team. This will be her second year as Montana's starting two guard.

As a junior last season, Anderson averaged 4.9 points and 2.6 assists in 24 minutes per game. She scored a career high of 17 points against Eastern Washington on January 11 in Missoula.

As a sophomore, Anderson was a consistent back-up at both the point guard and two guard positions. She played in 28 games, averaging 20 minutes per game and also started five games. She dished out a career high of nine assists against Nevada in January 1991.

As a freshman at UM, Anderson played in all 30 games. She attended the U.S. Olympic Festival Trials in both 1990 and 1991.

Anderson holds single-season records for points (440), assists (216) and steals (190) at Hutchinson High School, where she played for her father, Mark Anderson. During her prep career she had 1,113 points, 523 steals and 505 assists in four years. She played in the Minnesota All-Star game and led her AAU team to a third-place finish at the state "AA" tournament with a record of 27-2.

"Joy played very solid at the end of last season," Selvig said. "Obviously since she is the lone senior, we're looking to her for leadership and consistency. We need Joy to be a steady influence on this team."

Joy's parents are Mark and Heather Anderson of Hutchinson. She was born on November 7, 1970.



The Anderson Profile:	
Name: Joy DeBuhr Anderson	Vikings fan
Birthplace: Minneapolis, Minn.	Most Prestigious Award Received: High School Homecoming Queen
Siblings: Kenje (19)	Pregame Preparation: Slimfast Shakes
Major: Biology	Favorite Movie: Patriot Games
Future Plans: To graduate soon and successfully own my own flower shop	Favorite Book: The Bible
Favorite Quote: "Be All That You Can Be."	Favorite Music Artist: Eric Clapton, U2
Favorite Athlete & Why: Just a die-hard Minnesota	Dream Vacation: Two weeks at Club Med

Year	- Total -				- 3PT -				PTS	AVG	OFF REB	DEF REB	TOT REB	AVG	PF/D	AST	TO	BLK	STL	MIN
	G/GS	FG/FGA	FG%	FT/FTA	FT%	FG/FGA	FG%	FT/FTA												
1989-90	30/30	56/150	.373	3/10	.300	33/42	.786	148	4.9	6	42	48	1.6	60/1	157	102	2	44	810	
1990-91	30/30	93/212	.439	9/26	.346	53/70	.757	248	8.3	3	42	45	1.5	54/0	111	104	1	51	889	
1991-92	30/30	62/180	.345	11/38	.290	12/16	.750	147	4.9	15	49	64	2.1	38/1	78	62	0	38	723	
Totals	90/90	211/542	.389	23/74	.311	98/128	.766	543	6.0	24	133	157	1.7	152/2	346	268	3	133	2422	

11 CARLA BEATTIE

5-7 Sophomore, Guard Philipsburg, Montana

After a very successful freshman stint, Carla Beattie (BEE-Dee) will be expected to improve on that success and contribute more perimeter scoring this season.

As a true freshman last year, Beattie received votes for Big Sky Freshman of the Year and was Dick Vitale's preseason pick as the ninth best recruit in the nation.

She averaged 5.3 points last season and was UM's fourth leading scorer. Beattie came off the bench in all 30 games and averaged 14 minutes per game. She scored a career high of 16 points against Montana State in January. Beattie was also successful in the classroom, earning 1992 Big Sky all-academic honors.

Beattie is the highest scoring girls' basketball player in the state of Montana with 2,508 points in four years at Granite High School. That record was previously held by Marti Kinzler, who played for the Lady Griz from 1987-91.

She was a three-time MVP for Granite High, and she won the free throw award four times. As a senior, she averaged 33.9 points, 6.2 rebounds and 5.9 assists per game for the Prospectors, who went 23-3 in 1990-91. Beattie was a three-year all-state and four-year all-conference player, and she led her team to the conference title three years in-a-row. She scored a career high of 50 points in one game.

A multi-sport standout, Beattie earned one letter in volleyball and four letters in track and field. As a junior she placed third in the javelin at the state meet. She was also active in AAU basketball.

Maintaining a 3.8 GPA throughout high school, Beattie was a four-time state all-academic selection.

"I really like the way Carla finished last season," Selvig said. "She shot the ball extremely well in big games and she played with more confidence. I think that should be a springboard for this year."

The daughter of Jim and Eileen Beattie, Carla and her twin sister Crista, were born on May 9, 1973. Her brothers, Ken and Steve, both played basketball for Montana Tech in Butte.



The Beattie Profile:	
Name: Carla Ann Beattie	Most Prestigious Award Received: Montana High School Career Scoring Record
Birthplace: Anaconda, Mont.	Pregame Preparation: Rest, visualize the game, and listen to music
Siblings: Ken (23), Steve (21) & Crista (19)	Favorite Movie: A League of Their Own
Major: Elementary Education	Favorite Book: Playing the Knight
Future Plans: To play in the NCAA tournament this year	Favorite Music Artist: Amy Grant
Favorite Quote: "With God Behind You, You Can Face Whatever is Ahead of You."	Dream Vacation: Bigfork, Montana
Favorite Athlete & Why: Chris Mullin--He can shoot the ball!!	

Year	- Total -				- 3PT -				PTS	AVG	OFF REB	DEF REB	TOT REB	AVG	PF/D	AST	TO	BLK	STL	MIN
	G/GS	FG/FGA	FG%	FT/FTA	FT%	FG/FGA	FG%	FT/FTA												
1991-92	30/0	50/138	.362	28/82	.342	30/42	.714	158	5.3	22	36	58	1.9	29/0	30	46	0	13	423	
Totals	30/0	50/138	.362	28/82	.342	30/42	.714	158	5.3	22	36	58	1.9	29/0	30	46	0	13	423	

22 SHERRI BROOKS

5-9 Freshman, Guard
Livingston, Montana

After redshirting last year, Sherri Brooks gets back into action and is expected to be one of Montana's quickest and fastest scoring guards this season.

Brooks is most likely going to play the back-up two guard position, however, she could also contribute some time at small forward.

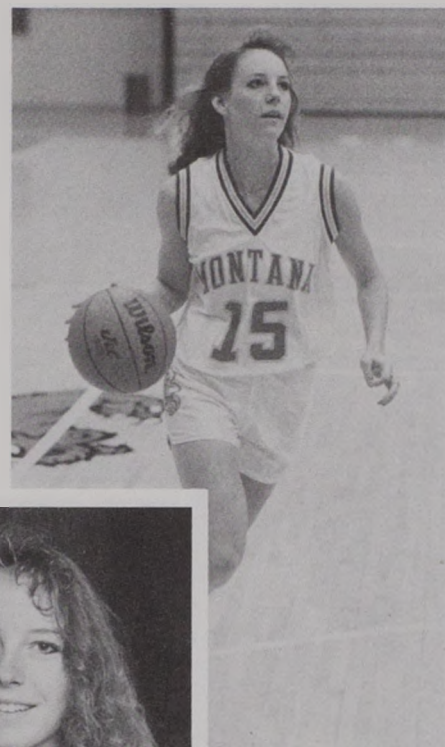
She was a three-time all-conference and all-state selection at Park County High School. She was a two-time team MVP, and she led the Park County Rangers to a second-place state "A" finish three years in-a-row and averaged 25 points, seven rebounds and five steals per game as a senior.

Brooks was also a standout in volleyball, track and tennis. Her volleyball team advanced to divisionals three times and was the state "A" champions in 1989 and 1990. Her track team also won the state "A" championship in 1988 and 1989.

Brooks was the Gatorade girls' player of the year in 1990.

"Sherri is a very talented player," Selvig said. "She is our fastest and quickest player, and we look for good things from Sherri. We definitely look for her to be in the picture as a redshirt freshman. She is pretty versatile, and I can see using her anywhere from point guard to small forward. She's a good jumper, and she has the ability to rebound."

Born on May 3, 1973, Sherri's guardians are Helen and Bob Wilson.



The Brooks Profile:

Name: Sherri Lynn Brooks
Birthplace: Livingston, Mont.
Siblings: Sami (25), Mike (24) & Sean (14)
Major: General Studies
Future Plans: To graduate from college
Favorite Quote: "Never give up. Never, never give up."
Favorite Athlete: Joe Montana

Most Prestigious Award Received: Gatorade Player of the Year
Pregame Preparation: Eating
Favorite Movie: Dirty Dancing
Favorite Book: Stephen King books
Favorite Music Artist: Def Leppard
Dream Vacation: Bahamas



55 JILL FROHLICH

6-3 Junior, Center
Missoula, Montana

Jill Frohlich (FRO-Lick) contributed a lot last year as Montana's back-up center, and this season she is expected to make even greater strides in her playing ability.

As a sophomore, Frohlich contributed 3.1 points, 3.5 rebounds and 1.1 blocks per game for the Lady Griz. She scored a career high of 14 points against Southern Utah State in December of 1991, pulled down a career high of seven rebounds twice, and had a career high of six blocks against Northern Arizona in January 1992. Frohlich attended the U.S. Sports Festival trials in California in the spring of 1991.

As a senior at Hellgate High School in Missoula, Frohlich led her team to the 1990 state "AA" championship game and scored 30 points in that game to lead the Knights to a 53-52 victory over intra-city rival Big Sky High. Late in the game, however, she sustained a knee injury that required major reconstructive surgery.

A Converse All-American and the 1990 winner of the Naismith award, Frohlich averaged 16 points, 12 rebounds, four blocks and 2.3 assists per game as a senior and was named the Knights MVP. She left Hellgate as the school's all-time leading rebounder with 614 career boards, and she was Hellgate's second-leading single-season scorer with 436 points in 1989. She was a two-time all-conference and all-state selection, and she played in the Montana All-Star Classic game. Frohlich also earned all-state honors in volleyball.

"The exciting thing about Jill is that she has gotten herself into great physical condition," Selvig said. "She has worked very hard over the summer. She will be faster, quicker and in much better shape. That will allow her to improve from the get go."

The daughter of James and Beverly Frohlich, Jill was born on April 10, 1972.

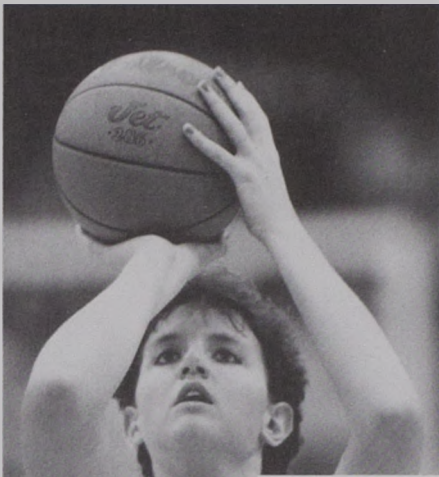


The Frohlich Profile:

Full Name: Jill Margret Frohlich
Birthplace: Helena, Mont.
Siblings: Shannon (26), Mark (22), Paul (19) & Jo (17)
Major: Social Work
Future Plans: To have a prosperous academic and athletic year.
Favorite Quote: "We make a living by what we give, but we make a life by what we are."
Favorite Athlete & Why: Karl Malone. He has great

work ethic and drive to be the best.
Most Prestigious Award Ever Received: Converse All-American and Naismith Award
Pregame Preparation: Eat, sleep and visualize the game.
Favorite Movie: What About Bob?
Favorite Book: A Time to Kill
Favorite Music Artist: Boyz II Men
Dream Vacation: Fiji Islands

Year	- Total -			- 3PT -				PTS	AVG	OFF REB	DEF REB	TOT REB	AVG	PF/D	AST	TO	BLK	STL	MIN
	G/GS	FG FGA	FG%	FG FGA	FG%	FT FTA	FT%												
1991-92	29/0	43/113	.381	0/0	.000	3/15	.200	89	3.1	33	68	101	3.5	51/0	3	22	33	9	368
Totals	29/0	43/113	.381	0/0	.000	3/15	.200	89	3.1	33	68	101	3.5	51/0	3	22	33	9	368



45 JODI HINRICHS

6-3 Junior, Center
Fairfield, Montana

Montana's leading rebounder (9.1 rpg) and second-leading scorer (11.1 ppg), Jodi Hinrichs (HINE-Ricks) started all 30 games last season. She led the Lady Griz in rebounding 16 times, including a career high 15 rebounds twice (BYU and Nevada). She is also an outstanding blocker, who averaged 1.7 blocks per game last season.

Hinrichs was the 1992 recipient of the Theresa Roads Award, given annually to the player who best exemplifies Lady Griz basketball. It is one of UM's most prestigious awards. She was also named to the Domino's Classic all-tournament team, and she earned Big Sky Player of the Week honors after scoring a career high of 21 points against Southern Utah State. Hinrichs ended the season second in the Big Sky in both rebounding and blocks.

After two successful seasons with the Lady Griz, Hinrichs begins her junior year as UM's 15th leading rebounder with 458 career boards.

Hinrichs was the 1991 Big Sky Conference Outstanding Freshman and a Big Sky all-tournament pick, after averaging 7.6 points, 6.2 rebounds and 1.1 blocks per game. Hinrichs was one of several players who attended the U.S. Sports Festival trials at Stanford in 1991.

As a senior at Fairfield High, Hinrichs averaged 21 points, 12 rebounds and five blocks per game. She was a two-time team MVP and a three-time all-conference and all-state selection for the Eagles. As a junior, she was the state class "B" MVP, and she earned MVP honors in track as a sophomore. During her freshman year, she was the top rebounder and high scorer for Power High School.

"We will be very deep at the center position again this year," Selvig said. "Jodi is improving, and she is a quality player. She is someone who keeps improving, and she has an excellent work ethic. I think she was a very, very good player last year, but I look for her to be better this year. We will be very solid at that position."

Jodi is the daughter of Bill and Cheryl Hinrichs of Fairfield. She was born on August 26, 1972.

The Hinrichs Profile:

Name: Jodi Jayne Hinrichs	Most Prestigious Award Received: Theresa Rhoads Coaches Award
Birthplace: Bozeman, Mont.	Pregame Preparation: Listen to music, being alone
Siblings: Josh (22)	Favorite Movie: Man From Snowy River, The Return
Major: Elementary Education	Favorite Book: Playing for Knight
Future Plans: To advance to the West Regional tournament	Favorite Music Artist: Garth Brooks
Favorite Quote: "I can do all things through Christ, which strengthens me." Philippians 4:13	Dream Vacation: Go on a cruise anywhere around the world
Favorite Athlete: Josh Hinrichs	

Year	G/GS	- Total -			- 3PT -			PTS	AVG	OFF REB	DEF REB	TOT REB	AVG	PF/D	AST	TO	BLK	STL	MIN
		FG/FGA	FG%	FT/FTA	FT%	FG/FGA	FG%												
1990-91	30/1	89/169	.527	0/0	.000	47/84	.560	225	7.5	66	120	186	6.2	59/0	4	26	34	30	562
1991-92	30/30	141/261	.540	0/0	.000	50/97	.516	332	11.1	108	164	272	9.1	92/3	11	48	52	28	793
Totals	60/31	230/430	.535	0/0	.000	97/181	.536	557	9.3	174	284	458	7.6	151/3	15	74	86	58	1355

53 MALIA KIPP

6-1 Freshman, Forward-Center
Browning, Montana

Malia (Ma-LEE-A) Kipp is Montana's first signee from Browning. A very solid and multi-talented player, Kipp will probably play back-up roles for both the four and the five positions.

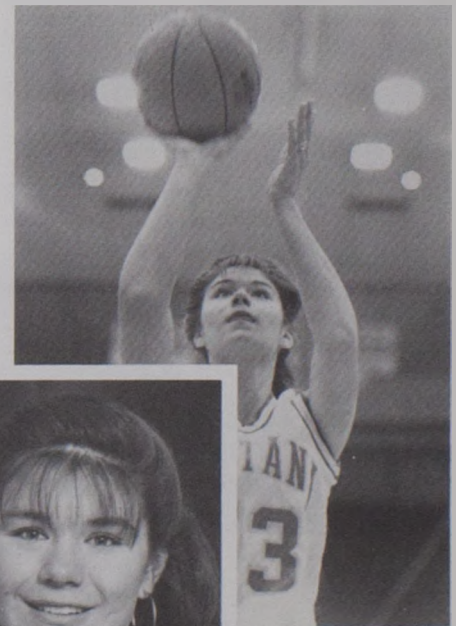
Kipp was named Browning's Most Valuable Player four times. She led the Indians to an 18-4 record as a senior, averaging 18 points and 13 rebounds per game. Her team won the Northern "A" Conference title in both 1990 and 1991, and Kipp was a four-time all-conference player. A three-time all-state player, Kipp scored 1,435 career points and pulled down 1,044 career rebounds at Browning.

Kipp was also a four-year letter winner in both volleyball and track and field. In volleyball, she was an all-conference selection as a junior and an all-state selection as a senior. She competed in the state "A" track meet as a triple jumper three times.

Kipp was also a member of the Honor Roll, maintaining a 3.7 GPA.

"We look at Malia as both a four and a five with great potential at both of those positions," Selvig said. "Malia has good basketball savvy. She can shoot well and pass well. Adjusting to this level of the game will take some time, but Malia has good basketball sense."

Born on June 30, 1974, she is the daughter of Carl and Dee Ann Kipp. Her father, Carl, played basketball for Northern Montana College.



The Kipp Profile:

Name: Barbara Malia Kipp	Favorite Athlete: Charles Barkley--He is simply awesome!
Birthplace: Browning, Mont.	Most Prestigious Award Received: Being selected to the all-state team three times
Siblings: Carly (16), Jennifer (13) and Logan (9)	Pregame Preparation: Listen to music
Major: General Studies	Favorite Movie: The Burbs
Future Plans: To get a 3.0 GPA or better this year and to eventually have a well-paying job	Favorite Book: Misery
Favorite Quote: "Losing is only temporary, unless you quit."	Favorite Music Artist: Dwight Yoakum
	Dream Vacation: A cruise through the Bahamas

15 GRETA KOSS

6-0 Freshman, Forward
Malta, Montana

Greta Koss comes to The University of Montana from Malta, home of former Lady Griz Linda Mendel (1985-90). Koss, like Montana's other two newcomers, will play a significant back-up role, probably at the three or four position.

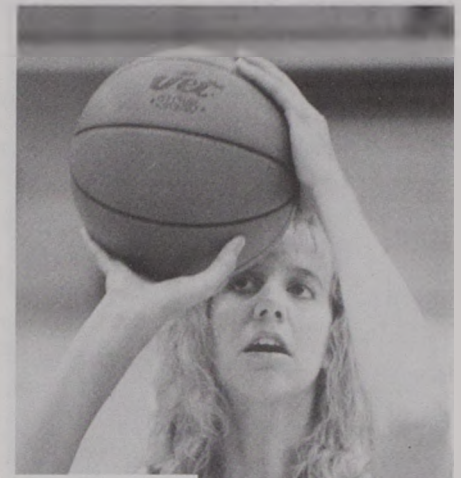
As a senior last year, Koss led the Malta Mustangs to a 24-3 record and the state class "B" title, averaging 14.3 points and 7.3 rebounds per game. She shot 57 percent from the field, and she participated in the Montana Girls' All-Star game.

She was a Converse All-American, a two-time team MVP, and a two-time all-state selection. She also earned all-conference honors three times and was named the 1991 state "B" tournament MVP.

Koss was also a three-time all-conference and two-time all-state selection in volleyball. She earned three letters in both volleyball and basketball.

"We look for great things out of Greta in this program," Selvig said. "Greta reminds me a lot of Marti Leibenguth. She's got great hands and great instincts. She is a very, very good athlete. She has the highest vertical jump of any player we've ever had, and she's very versatile. She has the ability to do a lot of different things for us in our program."

The daughter of Paul and Donna Koss of Malta, she was born on June 12, 1974.



The Koss Profile:

Name: Greta Velyn Koss
Birthplace: Malta, Mont.
Siblings: Kerry (16)
Major: General Studies
Future Plans: Get through college, get a job in the field I choose and have a family
Favorite Quote: "The race is not always to the swift, but to the one who keeps running."
Favorite Athlete: Michael Jordan--He's an incredible

basketball player
Most Prestigious Award Received: Converse All-American
Pregame Preparation: Stretch, pray and listen to music
Favorite Movie: My Girl
Favorite Book: East of Eden
Favorite Music Artist: Bryan Adams
Dream Vacation: A trip to Australia

43 ANN LAKE

6-0 Junior, Forward
Missoula, Montana

Montana's leading scorer (11.3 ppg) and second-leading rebounder (7.4 rpg), Ann Lake is a two-year starter for the Lady Griz. Lake started 29 of 30 games last season and all 30 games in 1990-91.

Montana's Outstanding Defensive Player last season, Lake was also a Big Sky all-conference selection. In addition, she earned Big Sky Player of the Week honors after leading UM to a 64-47 win over Boise State in front of a Big Sky record crowd of 9,556 in Boise, Idaho.

Lake had career highs of 23 points against BYU and 16 rebounds against Idaho last season, and she led Montana in scoring five times and in rebounding 11 times. She ended the season 13th in Big Sky scoring and eighth in rebounding. Lake is currently 18th on Montana's all-time rebounding list with 402 career boards.

As a redshirt freshman in 1990-91, Lake was named to the Domino's Pizza Classic all-tournament team. She averaged 7.6 points and 6.0 rebounds per game.

Redshirting her first season with Montana, Ann competed in the Olympic Festival trials in 1990 and the U.S. Sports Festival trials in 1991.

As a senior at Big Sky High, Lake averaged 16 points and 10 rebounds per game. She helped lead the Eagles to the 1988 and 1989 class "AA" championships titles. She was a first team all-state and all-tournament selection as a senior and earned MVP honors at the state tournament her junior year. A Converse All-American, Lake won the Montana Naismith and Gatorade girls' player of the year awards.

"Ann had an awful good season last year," Selvig said. "She is a fine athlete, who has the strength, speed, quickness and intensity to be an outstanding player at this level. I was very impressed with Ann's improved defense last year. She became a very good defensive player, which was a key to us winning a lot of ball games last year. I will look for Ann to keep improving. She does all the things you need to do athletically to be a competitive player."

Born on February 18, 1971, Ann is the daughter of George and Joy Lake of Missoula.



TheLake Profile:

Name: Ann Lorraine Lake
Birthplace: Missoula, Montana
Siblings: George II (24), Holly (15), Heidi (14) and Scott (10)
Major: Business Administration, Management, Marketing
Future Plans: Graduate, get a Master's Degree in Phoenix and manage an international human resources business
Favorite Quote: "Tired is temporary. Victory is forever."

Favorite Athlete: Michael Jordan--He has determination and style
Most Prestigious Award Received: Converse High School All-American
Pregame Preparation: Listen to music/Shopping (if allowed)
Favorite Movie: Hand That Rocks the Cradle
Favorite Book: Tisha
Favorite Music Artist: Garth Brooks, Reba Mcintyre
Dream Vacation: A trip to London and Paris

Year	- TOTAL -			- 3PT -			PTS	AVG	OFF REB	DEF REB	TOT REB	AVG	PF/D	AST	TO	BLK	STL	MIN		
	G	GS	FG/FGA	FC%	FG FGA	FG%													FT/FTA	FT%
1990-91	30	30	76/164	46%	0/0	.000	75/126	.595	227	7.6	54	127	181	6.0	67/2	29	47	6	30	651
1991-92	30	29	137/273	.502	1/2	.500	71/152	.467	346	11.5	91	130	221	7.4	73/3	30	63	3	30	816
Totals	60	59	213/437	.487	1/2	.500	146/278	.525	573	9.6	145	257	402	6.7	140/5	59	110	9	60	1467



23 KRISTY LANGTON

5-11 Sophomore, Forward
Stevensville, Montana

Kristy Langton is a good prospect to start at the small forward position this season. As a redshirt freshman last year, Langton started five games in place of All-American Shannon Cate, who missed those games due to a shoulder injury.

A talented and flexible player, Langton could also see some time at the two guard spot. She averaged five points and 3.1 rebounds in 29 games, and she played an average of 14.8 minutes per game. She scored a career high of 15 points against Utah in December, and twice she has pulled down a career high of six rebounds. Langton was also the recipient of the 1992 Grace Geil Most Improved Player award.

Langton is a two-time all-state and all-conference pick in basketball and volleyball at Stevensville High. She was selected the Most Valuable Player of the hoop team, leaving SHS as the all-time leading scorer and rebounder with 1,002 points and 696 rebounds in only three years as a Yellowjacket. She led her team in scoring (19.3 ppg), rebounding (12.5 rpg) and free throw shooting (.620). She participated in the Montana All-Star Classic in 1990, along with another Lady Griz, Jill Frohlich.

"Kristy is another great athlete we have this year," Selvig said. "She had some big games last year, and her potential is still untapped. Kristy has the ability to be a great player, if she keeps working hard, and she will. She always works hard."

The daughter of Brian and Karen Langton, Kristy was born on July 22, 1972. Kristy's mother played both basketball and volleyball at Montana State.



The Langton Profile:

Name: Kristy Lee Langton
Birthplace: Hamilton, Mont.
Siblings: Gretchen (23) and Jill (16)
Major: Elementary Education
Future Plans: Teach a primary grade and coach basketball
Favorite Quote: "Every good and perfect gift is from above." James 1:17
Favorite Athlete: Kevin Johnson---He has awesome

athletic ability and strong faith.
Most Prestigious Award Received: Grace Geil Most Improved Player Award; State volleyball tournament MVP
Pregame Preparation: Relax and pray
Favorite Movie: Father of the Bride
Favorite Book: "Where's Waldo?" books
Favorite Music Artist: Joni Gibson & Steven Curtis Chapman
Dream Vacation: A cruise through the Caribbean Islands

Year	G/GS	- TOTAL -		- 3PT -		FT/FTA	FT%	PTS	AVG	OFF REB	DEF REB	TOT REB	AVG	PF/D	AST	TO	BLK	STL	MIN
		FG/FGA	FG%	FG/FGA	FG%														
1991-92	29/5	45/117	.385	15/48	.313	40/62	.645	145	5.0	29	62	91	3.1	39/0	38	35	10	22	430
Totals	29/5	45/117	.385	15/48	.313	40/62	.645	145	5.0	29	62	91	3.1	39/0	38	35	10	22	430

25 LORA MORAST

5-11 Sophomore, Forward
Kalispell, Montana

Lora Morast (MORE-Ast) saw limited action last season as a redshirt freshman, averaging 2.8 points and 2.6 rebounds per game. She played in 25 games, averaging 10.1 minutes per game.

With a little added experience, Morast is expected to see more court time this season. She will potentially play both the three and four positions, although Selvig would like to integrate her into the small forward position.

Morast had career highs of eight points against Northern Arizona and eight rebounds against Southern Utah State last season.

Up until last season, Morast had not played in a real game situation since early in her senior year at Flathead High School. Only four games into her senior season, she injured her knee, which kept her off the court for the rest of the season.

In those four games as a senior at Flathead High, Morast averaged 23.7 points, 8.5 rebounds and 2.3 steals per game, and she shot .590 from the field and .640 from the line. She also missed the volleyball and track seasons during her senior year because of the knee injury.

As a junior, she was an all-conference and all-state "AA" tournament team selection.

"Lora had some good moments last year," Selvig said. "Had Trish not gotten hurt last season, Lora may not have seen as much court time as she did. Lora impressed us last year; she really played well. Lora could possibly play three as well as four this season, which is an adjustment. She also has returned in good shape. Lora does some things the other players don't. She has a quick step to the basket, but she needs to improve defensively."

Lora was born to Duane and Nancy Morast on July 20, 1972. Lora's father played basketball at Miles City Community College, and her brother, Lonnie, played both basketball and baseball at Concordia College in Portland, Oregon.

The Morast Profile:

Name: Lora Morast
Birthplace: Missoula, Mont.
Siblings: Lonnie (26) and Londa Morast-Grame (22)
Major: Elementary Education
Future Plans: Advance to the 1993 West Regional Tournament, and teach children after college
Favorite Quote: "Sports is the toy department of life."

Favorite Athlete: A.C. Green--He has a lot of dedication
Pregame Preparation: Listen to music
Favorite Movie: Witness
Favorite Book: Anything authored by Janette Oake
Favorite Music Artist: Amy Grant
Dream Vacation: Disney World



Year	G/GS	- TOTAL -		- 3PT -		FT/FTA	FT%	PTS	AVG	OFF REB	DEF REB	TOT REB	AVG	PF/D	AST	TO	BLK	STL	MIN
		FG/FGA	FG%	FG/FGA	FG%														
1991-92	25/0	30/74	.405	0/0	.000	11/24	.458	71	2.8	23	43	66	2.6	32/1	12	11	4	10	252
Totals	25/0	30/74	.405	0/0	.000	11/24	.458	71	2.8	23	43	66	2.6	32/1	12	11	4	10	252

31 TRISH OLSON

6-1 Junior, Forward Missoula, Montana

While competing in the Rainbow Wahini Classic in Honolulu, Hawaii last year, Trish Olson broke a bone in her right foot and was unable to compete for the rest of the season. Montana was granted a medical hardship for Olson. In three games last season, she averaged 11.7 points and 3.7 rebounds, while shooting .630 from the field. After a year of sitting out and getting healthy, Olson is expected to contribute considerably this season.

As a sophomore, Olson was Montana's leading blocker (1.2 per game) and UM's starting center. She started all 29 games she played in, but she missed the Gonzaga game with a sprained ankle.

Montana's third leading returnee, Olson averaged eight points and 4.6 rebounds per game during 1990-91. She was selected to the Big Sky Conference all-tournament team, after scoring a career high of 17 points against Montana State in the championship game. Her other career highs include nine rebounds, four assists and four blocks. She also attended the U.S. Sports Festival trials in Stanford, Calif., in April of 1991.

Olson is a two-time Big Sky All-Academic selection, maintaining above a 3.6 GPA in mathematics.

As a freshman, she played in 28 of 30 games and averaged almost 10 minutes per game. She attended the U.S. Olympic Festival trials in 1990.

Olson led Big Sky High to two state "AA" titles, averaging 12 points and 5.5 rebounds per game as a senior. She was an all-conference and all-state selection as a senior and led her team in blocked shots with 56 on the season. She also earned all-state honors in volleyball.

"It's really nice to have Trish back," Selvig said. "She gives us a dimension that we don't have inside. Trish is a good shooter, particularly on the perimeter. Her post offensive skills will continue to get better. She is a good defender and can intimidate a little, in terms of changing her shot. We're obviously happy to have her back."

Trish was born to Harvey and Margaret Olson on May 8, 1971.



The Olson Profile:

Name: Patricia Ann Olson
Birthplace: Miles City, Mont.
Siblings: Jim (38), Kaye (37) & Jean (33)
Major: Mathematics
Future Plans: Make a lot of money and have a big family
Favorite Quote: "Winning isn't everything. It's the only thing."
Favorite Athlete: Michael Jordan

Most Prestigious Award Received: 1991 Big Sky Conference all-tournament team
Pregame Preparation: Listen to music
Favorite Movie: A River Runs Through It
Favorite Book: To Kill a Mockingbird
Favorite Music Artist: Elton John
Dream Vacation: Relaxing on a hot, white, sandy beach, drinking tropical fruit drinks after winning the Final Four.

Year	- TOTAL -			- 3PT -			PTS	AVG	OFF REB	DEF REB	TOT REB	AVG	PF/D	AST	TO	BLK	STL	MIN	
	G/GS	FG/FGA	FG%	FG/FGA	FG%	FT/FTA													FT%
1989-90	30/0	31/92	.337	1/5	.200	18/39	462	81	2.7	30	43	73	2.4	42/1	33	28	5	26	436
1990-91	29/29	100/206	.485	4/5	.800	28/50	560	232	8.0	47	86	133	4.6	71/3	25	40	35	23	746
1991-92	3/1	17/27	.630	1/1	1.000	0/1	.000	35	11.7	6	5	11	3.7	7/0	3	3	2	4	87
Totals	62/30	148/325	.455	6/11	.546	46/90	.511	348	5.6	83	134	217	3.5	120/4	61	71	42	53	1269

10 KRISTIN OMLID

5-10 Junior, Guard Stevensville, Montana

Kristin Omlid (OM-Lid) returns for her fourth year as a Lady Griz, but the ambidextrous is only a junior on the court, as she redshirted her first season at Montana. Omlid is expected to play both the off guard and the small forward position.

Last year as a sophomore, Omlid played in 26 games, averaging 7.7 minutes per game. She was good for 1.3 points and 1.1 rebounds per game, and was the second highest free-throw shooter on the team, hitting .790 from the line (15-of-19). Omlid has posted career highs of six points and six rebounds.

As a freshman redshirt in 1990-91, Omlid played in 21 games, averaging almost 11 minutes per game. She contributed 2.2 points and 1.7 rebounds per game.

At 5-10, she is one of the tallest guards listed on the roster, and she has a solid shot from the outside. Omlid attended the U.S. Sports Festival trials in Stanford, Calif., in the spring of 1991.

Omlid was unable to compete in basketball during her senior year at Stevensville High School due to a knee injury that required total reconstructive surgery. As a junior for the Yellowjackets, she averaged 15.3 points, five rebounds and three assists per game. She was a two-time all-conference and all-state selection in both basketball and volleyball. She was also the team MVP in basketball, volleyball and track in 1987-88.

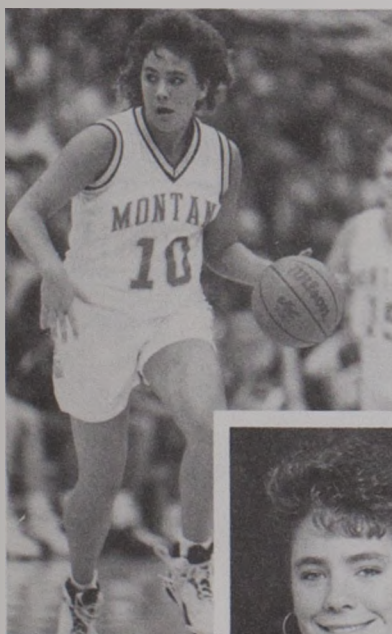
"Kristin has an excellent shot," Selvig said. "She is one of our best shooters, and she is also one of our more experienced players. We are looking to play her at both the two and the three position, which will be a little different. She has been in the program for four years, and her experience will help her."

The daughter of Orlin and Carol Omlid, Kristin was born on January 29, 1971.

The Omlid Profile:

Name: Kristin Renee Omlid
Birthplace: Missoula, Mont.
Siblings: Donna (26), Cody (24), Lukas (19) and Aaron (13)
Major: Social Work
Future Plans: To be a positive asset on this team, then graduate and go into law enforcement
Favorite Quote: "Stars shine, but teams win."
Favorite Athlete: Andre Agassi-I like the way he expresses himself and doesn't care what others think.

Most Prestigious Award Received: High School Homecoming Queen
Pregame Preparation: Rockin' out to my favorite music.
Favorite Movie: Prince of Tides
Favorite Book: Any book by John Saul
Favorite Music Artist: John Cougar, the Black Crowes, The Judds, Elton John & Rod Stewart
Dream Vacation: A week with the natives in the Amazon Forest



Year	- TOTAL -			- 3PT -			PTS	AVG	OFF REB	DEF REB	TOT REB	AVG	PF/D	AST	TO	BLK	STL	MIN	
	G/GS	FG/FGA	FG%	FG/FGA	FG%	FT/FTA													FT%
1990-91	21/0	18/54	.333	3/16	.188	7/12	583	46	2.2	6	30	36	1.7	21/0	14	15	0	5	224
1991-92	26/0	9/31	.290	1/6	.167	15/19	.790	34	1.3	8	21	29	1.1	11/0	10	11	1	13	201
Totals	47/0	27/85	.318	4/22	.182	22/31	.710	80	1.7	14	51	65	1.4	32/0	24	26	1	18	425



36 KELLY PILCHER

5-7 Junior, Guard
Missoula, Montana

A back-up point guard for the Lady Griz last season behind Julie Epperly, Kelly Pilcher is expected to start at the point this season. Pilcher is a confident guard with great court vision and passing skills.

Last year as a sophomore, Pilcher averaged 16 minutes per game in all 30 games, and she contributed 4.3 points, 1.6 rebounds and 2.9 assists for Montana. She posted career highs of 15 points, five rebounds, and six assists.

As a freshman, Pilcher averaged 2.2 points, one rebound and 1.9 assists per game. She also attended the U.S. Olympic Festival trials in Stanford, Calif., in the spring of 1991.

At Big Sky High, Pilcher was a two-time state "AA" tournament MVP, averaging 15.4 points, 4.5 assists and 3.6 steals per game. She helped lead the Eagles to two state championship titles, nitting a jump shot in overtime to win both games. She was the USA Today Montana High School Athlete of the Year, and a nominee for the Sullivan Award.

Pilcher was also a determined athlete in volleyball and track, earning all-state honors in both and placing at the state "AA" track meet in every field event except the triple jump.

"I feel real good about having Kelly at the point," Selvig said. "The fact that we had both Julie (Epperly) and Kelly last year made us very strong at that position. Kelly is a good, open court player. She is a good creator; she makes things happen out there. Kelly has become a much more steady player. She does not turn it over like she did earlier in her career. She can also shoot the ball well. We think our point guard position is in great hands with Kelly."

Kelly is the daughter of Russ and Barbara Pilcher and was born on June 11, 1972. Her father played football for Carroll College, and her cousin, Linda Raunig, played basketball for Denver University.



The Pilcher Profile:

Name: Kelly Suzanne Pilcher
Birthplace: Missoula, Mont.
Siblings: Kaycee (14)
Major: Social Work
Future Plans: Finish school and get a job in social work
Favorite Quote: "Concentrate on finding your goal, then concentrate on reaching it."
Favorite Athlete: Clyde Drexler--He always plays hard no

matter how the game is going.
Most Prestigious Award Received: 1989 & 1990 State "AA" Tournament MVP
Pregame Preparation: Listen to music
Favorite Movie: Prince of Tides
Favorite Book: Flowers in the Attic, by V.C. Andrews
Favorite Music Artist: Billy Joel
Dream Vacation: Paris

Year	- TOTAL -			- 3PT -			PTS	AVG	OFF REB	DEF REB	TOT REB	AVG	PF/D	AST	TO	BLK	STL	MIN	
	G/GS	FG/FGA	FG%	FG/FGA	FG%	FT/FTA													FT%
1990-91	25/0	19/56	.339	2/13	.154	15/28	536	55	2.2	4	21	25	1.0	20/0	47	35	0	18	263
1991-92	30/0	40/100	.400	3/21	.143	47/72	653	130	4.3	3	45	48	1.6	58/2	87	72	1	38	480
Totals	55/0	59/156	.378	5/34	.147	62/100	.620	185	3.4	7	66	73	1.3	78/2	134	107	1	56	743

41 APRIL SATHER

Freshman, Forward
Havre, Montana

April Sather (SAY-Ther) comes from an excellent class, that dominated athletically in girls' high school sports last year. Two of Sather's classmates, Jennifer Patera and Brenda Naber, signed letters of intent to compete for the University of Montana in volleyball and track and field, respectively.

Sather led the Blue Ponies' hoop team to a 16-8 record and a second-place finish at the state "A" tournament. She was an all-state selection as a senior and a two-time all-conference pick as well. She averaged 15 points and nine rebounds per game, and hit 55 percent from the field.

Sather also led her volleyball team to a second-place state finish and a 22-2 record. She was a three-time all-conference and a two-time all-state player, and she was the 1991 team MVP.

In track and field, Sather helped lead her team to both the conference and state title as a senior. She placed in the high jump, the triple jump and the shot put in both her junior and senior seasons. She was also the state champion in the discus as a senior.

Sather was an academic all-state selection in all three sports, and she was Havre's Female Athlete of the Year in 1991-92.

"April is very athletic and has tremendous potential," Selvig said. "She will play either the three or the four. April is very good in every sport she competes in. It will be interesting to see where our new athletes fit in. I think there are going to be some very competitive practices this year."

The daughter of Terry and Kathy Sather of Havre, she was born on May 5, 1973. Her cousin, Tyler Edwards from Chinook, Mont., is a hurdler for the UM track team.



The Sather Profile:

Name: April Kathleen Sather
Birthplace: Glasgow, Mont.
Siblings: Amber (17) & Ben (13)
Major: General Studies
Future Plans: Find a major and finish college
Favorite Quote: "Winning is not a life or death matter. It's much more important than that."
Favorite Athlete: Larry Bird--He plays smart and never lets the ball go out of bounds

Most Prestigious Award Received: Havre High Female Athlete of the Year
Pregame Preparation: Listening to country music
Favorite Movie: Gonna Get You Sucka
Favorite Book: Presumed Innocent
Favorite Music Artist: The Cure
Dream Vacation: Spending a week camping at Big Mountain in Whitfish, Mont.

33 Dawn Sievers

5-7 Sophomore, Guard
Miles City, Montana

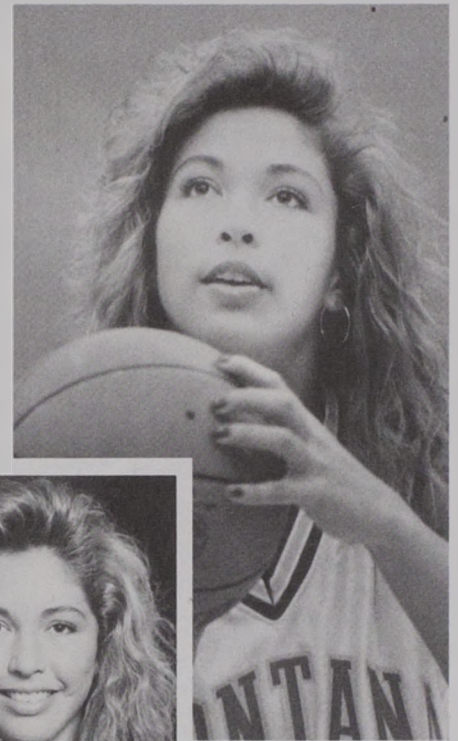
Dawn Sievers (SEA-Vers) redshirted last season after transferring to Montana from the University of Idaho, where she played the back-up two guard position. She will play the two guard position and possibly the point guard.

As a freshman at Idaho, Sievers played almost 17 minutes per game for the Vandals, averaging 5.9 points, 2.6 rebounds and 1.3 assists per game. She tied the Vandal school record for most free throw attempts per game, when she went 12-of-14 against Boise State in Moscow. Her 18 points in that game was a career high, and she also has career highs of five rebounds and four assists. Sievers also tied the Vandal record for most consecutive free throws, making 16 in-a-row. Five times Sievers scored in double figures for Idaho.

At Custer County High in Miles City, Sievers led the Cowgirls to the class "A" state championship title in 1988 and 1989. She averaged 19 points, four rebounds and three steals per game as a senior, and was a four-time all-state and all-conference pick. She was the regular season and tournament MVP in 1989, and she also lettered in volleyball and track.

"Dawn did a good job last year," Selvig said. "Dawn is quick, aggressive and plays very good defense. That's something we think is important here. Dawn's natural position is at the two guard, but we have looked at working her at the point. She is also strong and could play the three, but she is undersized there. She has good athletic ability, and she is an intelligent player. She's in the thick of the battle also."

The daughter of Dr. R.E. and Charlotte Sievers, Dawn was born on May 24, 1972. Dawn and her sister, Heather, are twins, as are Dawn's brother and sister, Mike and Missy.

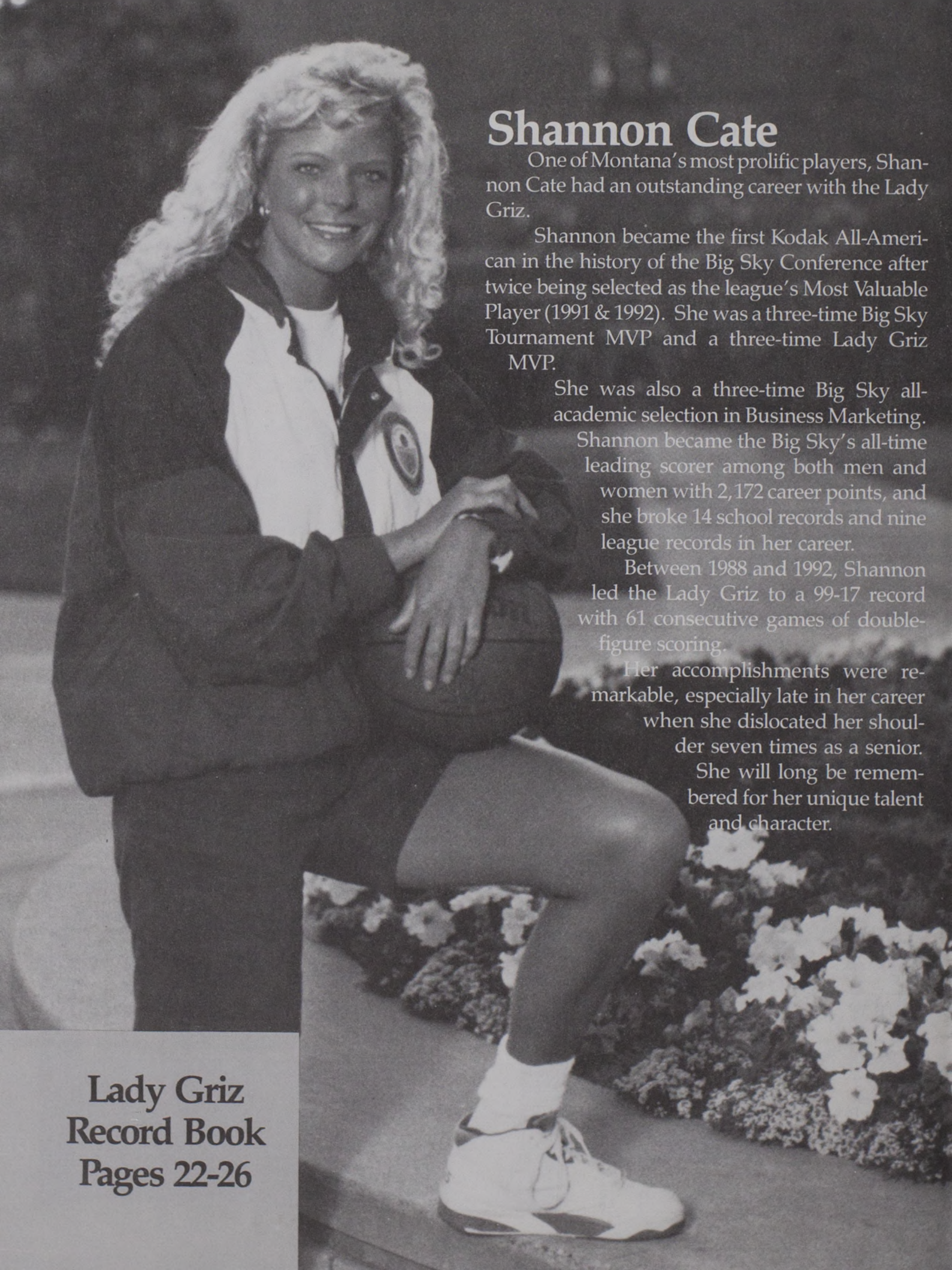


The Sievers Profile:

Name: Dawn Rachelle Sievers	Favorite Athlete: Jimmy Connors
Birthplace: Iowa City, Iowa	Most Prestigious Award Received: Will be my acceptance into Pharmacy school
Siblings: Mike & Missy (23), Heather (20), Kristi (17)	Pregame Preparation: Eat, sleep and pray
Major: Pre-Pharmacy	Favorite Movie: Grease
Future Plans: To get accepted into the Pharmacy program	Favorite Book: Roots by Alex Haley
Favorite Quote: "Anything worth having is worth working for."	Favorite Music Artist: Def Leppard, Aerosmith, Steve Miller Band
	Dream Vacation: Just Monty and I in Australia!

THE UNIVERSITY OF MONTANA Lady Griz Series Records

SCHOOL	WIN	LOST	SERIES BEGAN	SCHOOL	WIN	LOST	SERIES BEGAN
Alaska-Anchorhage	5	1	1977-78	North Texas	1	0	1990-91
Arkansas	0	2	1982-83	Northeast Louisiana	0	1	1982-83
Auburn	0	1	1990-91	Northern Arizona	10	0	1987-88
Boise State	27	7	1975-76	Northern Montana	6	0	1975-76
Brigham Young	4	2	1981-82	Notre Dame	1	0	1986-87
Cal State-Fullerton	3	0	1982-83	Oregon	2	8	1977-78
Cal-Irvine	2	0	1986-87	Oregon College of Education	0	2	1977-78
Calgary	2	0	1983-84	Oregon State	1	7	1976-77
California	3	1	1982-83	Pacific	2	1	1982-83
Carroll College	11	1	1974-75	Pacific Lutheran	0	1	1975-76
Central Washington	0	4	1974-75	Penn State	0	1	1983-84
Chapman College	1	0	1985-86	Pepperdine	1	0	1985-86
Colorado	1	1	1978-79	Portland	2	0	1988-89
Colorado State	3	1	1979-80	Portland State	14	3	1976-77
Creighton	1	1	1986-87	Providence	1	0	1991-92
DePaul	1	1	1986-87	Puget Sound	1	0	1984-85
Drake	0	1	1981-82	Rocky Mountain	4	0	1974-75
Eastern Illinois	1	0	1988-89	St. John's	1	0	1990-91
Eastern Montana	7	3	1975-76	St. Mary's (California)	3	0	1988-89
Eastern Oregon	0	1	1974-75	San Francisco	1	2	1980-81
Eastern Washington	30	9	1974-75	San Jose State	0	1	1985-86
Flathead Valley CC	5	7	1974-75	Santa Clara	1	0	1984-85
Florida	0	1	1984-85	Southern California	0	3	1983-84
Gonzaga	9	0	1980-81	Southern Utah State	3	0	1989-90
College of Great Falls	7	0	1978-79	Stanford	2	1	1980-81
Hawaii	0	2	1989-90	Stephen F. Austin	0	1	1986-87
Idaho	21	5	1975-76	Texas	0	1	1988-89
Idaho State	24	1	1978-79	Texas Christian	1	0	1989-90
Iowa	1	1	1980-81	Texas Southern	1	0	1991-92
Kansas State	1	2	1983-84	U.S. International	1	0	1987-88
Lamar	1	0	1987-88	Utah	7	1	1981-82
LaSalle	1	0	1985-86	Utah State	3	2	1978-79
Lethbridge	1	0	1975-76	Washington	8	11	1974-75
Louisiana Tech	0	1	1991-92	Washington State	15	9	1974-75
Minnesota	1	0	1984-85	Wayland Baptist	0	1	1981-82
Montana State	35	7	1974-75	Weber State	25	2	1977-78
Montana Tech	7	0	1977-78	West Texas State	0	1	1984-85
Nebraska	2	0	1986-87	West Virginia	0	1	1984-85
Nevada	12	1	1983-84	Western Montana	5	0	1974-75
North Dakota	1	1	1977-78	Whitworth	1	0	1975-76
North Dakota State	1	0	1977-78	Wisconsin	1	0	1991-92
North Idaho	1	0	1974-75	Wyoming	3	0	1983-84



Shannon Cate

One of Montana's most prolific players, Shannon Cate had an outstanding career with the Lady Griz.

Shannon became the first Kodak All-American in the history of the Big Sky Conference after twice being selected as the league's Most Valuable Player (1991 & 1992). She was a three-time Big Sky Tournament MVP and a three-time Lady Griz MVP.

She was also a three-time Big Sky all-academic selection in Business Marketing. Shannon became the Big Sky's all-time leading scorer among both men and women with 2,172 career points, and she broke 14 school records and nine league records in her career.

Between 1988 and 1992, Shannon led the Lady Griz to a 99-17 record with 61 consecutive games of double-figure scoring.

Her accomplishments were remarkable, especially late in her career when she dislocated her shoulder seven times as a senior.

She will long be remembered for her unique talent and character.

Lady Griz
Record Book
Pages 22-26



The Lady Griz Record Book



Career Leaders

SCORING

Player	Years	Points
1. Shannon Cate	1988-92	2172
2. Lisa McLeod	1985-89	1470
3. Marti Leibenguth	1984-88	1360
4. Jean McNulty	1985-90	1327
5. Doris Deden Hasquet	1980-84	1248
6. Cheri Bratt	1980-84	1196
7. Anita Novak	1981-85	1158
8. Sharla Muralt	1982-86	1157
9. Dawn Silliker	1984-88	1088
10. Barb Kavanagh	1981-85	1013
11. Cheryl Brandell	1984-89	980
12. Jill Greenfield	1979-81	933
13. Julie Epperly	1988-92	866
14. Linda Deden Smith	1976-80	813
15. Juli Eckmann	1979-83	799
16. Margaret Williams	1982-87	713
17. Kris Moede	1984-88	709
18. Marti Kinzler	1987-91	694
19. Natalie Chamberlain	1983-87	676
20. Sandy Selvig	1978-81	615

REBOUNDING

Player	Years	Rebounds
1. Shannon Cate	1988-92	878
2. Doris Deden Hasquet	1980-84	856
3. Lisa McLeod	1985-89	830
4. Marti Leibenguth	1984-88	795
5. Anita Novak	1981-85	791
6. Sharla Muralt	1982-85	729
7. Dawn Silliker	1984-88	667
8. Cheri Bratt	1980-84	657
9. Linda Deden Smith	1976-80	626
10. Jean McNulty	1985-90	581
11. Jill Greenfield	1979-81	570
12. Sandy Selvig	1978-81	515
13. Candie Stevens	1976-80	474
14. Marti Kinzler	1987-91	473
15. Jodi Hinrichs	1990-	458
16. Shari Thesenvitz	1980-83	439
17. Cheryl Brandell	1984-89	432
18. Ann Lake	1990-	402
19. Kris Haasl	1986-90	400
20. Juli Eckmann	1979-83	295

Lady Griz Individual Scoring Performances

Points	Name	Game	Year
41	Shannon Cate	Weber State	1991 (Overtime)
39	Shannon Cate	Montana State	1992 (Big Sky Semifinal)
39	Shannon Cate	Idaho	1991
38	Shannon Cate	Cal-Berkeley	1991
36	Shannon Cate	Boise State	1992 (Big Sky Final)
36	Shannon Cate	Gonzaga	1991
36	Shannon Cate	Iowa	1991 (NCAA 1st Round)
35	Shannon Cate	Eastern Washington	1991
35	Jean McNulty	Nevada	1990
34	Shannon Cate	Wisconsin	1991 (NCAA 1st Round)
34	Shannon Cate	Boise State	1992
32	Jill Greenfield	Boise State	1980
32	Shannon Cate	Eastern Washington	1990 (Big Sky Final)
31	Sharla Muralt	Montana State	1984 (MWAC Semifinals)
30	Shannon Cate	Louisiana Tech	1991
30	Shannon Cate	Montana State	1991
30	Jean McNulty	Washington	1989
30	Jean McNulty	Portland State	1989
30	Jean McNulty	Hawaii	1990 (NCAA 1st Round)
30	Shannon Cate	Washington State	1989
30	Jill Greenfield	Eastern Washington	1981
30	Doris Deden	Carroll College	1982
29	Shannon Cate	Oregon	1991
29	Shannon Cate	Montana State	1991
29	Shannon Cate	Northern Arizona	1991
29	Shannon Cate	Boise State	1990
29	Jean McNulty	Brigham Young	1989
29	Lisa McLeod	Idaho State	1987
29	Jill Greenfield	Weber State	1981
27	Jean McNulty	Northern Arizona	1990
27	Doris Deden	Eastern Washington	1984
27	Marti Leibenguth	Stanford	1988 (NCAA 2nd Round)
26	Shannon Cate	Southern California	1992 (NCAA 2nd Round)
26	Shannon Cate	Oregon	1991
26	Shannon Cate	Kansas State	1989
26	Shannon Cate	San Francisco	1989
26	Jean McNulty	Montana State	1990
26	Jill Greenfield	Washington	1981
26	Marti Leibenguth	Idaho State	1988



Montana had a record-breaking attendance average of 3,800 fans per home game last season.

Assists

Player	Years	Assists
1. Margaret Williams	1982-87	511
2. Cheri Bratt	1980-84	488
Julie Epperly	1988-92	488
4. Cheryl Brandell	1984-89	424
5. Shannon Cate	1988-92	421

Lady Griz Top Rebounding Performances

Rebounds	Name	Game	Year
19	Shannon Cate	Utah	1991
19	Sandy Selvig	Flathead Valley CC	1979
19	Doris Deden	Weber State	1983
19	Sharla Muralt	Coll. of Great Falls	1985
18	Jill Greenfield	Idaho	1981
17	Jill Greenfield	Coll. of Great Falls	1981
17	Sharla Muralt	Brigham Young	1982
17	Marti Leibenguth	Boise State	1988
16	Ann Lake	Idaho	1992
16	Marti Kinzler	St. John's	1991
16	Jill Greenfield	Eastern Washington	1981
16	Anita Novak	Gonzaga	1982
16	Marti Leibenguth	Eastern Washington	1988



Lady Griz Basketball Awards



Most Valuable Player Award

- 1992—Shannon Cate
- 1991—Shannon Cate
- 1990—Shannon Cate
- 1989—Lisa McLeod
- 1988—Marti Leibenguth
- 1987—Lisa McLeod
- 1986—Marti Leibenguth
- 1985—Barb Kavanagh
- 1984—Cheri Bratt
- 1983—Cheri Bratt
- 1982—Doris Deden Hasquet
- 1981—Jill Greenfield
- 1980—Jill Greenfield

Shannon Green Most Inspirational Award

(Began in 1982)

- 1992—Julie Epperly
- 1991—Marti Kinzler
- 1990—Vicki Austin
- 1989—Cheryl Brandell
- 1988—Cheryl Brandell
- 1987—Laurie Strube
- 1986—Margaret Williams
- 1985—Barb Kavanagh
- 1984—Barb Kavanagh
- 1983—Barb Kavanagh
- 1982—Sue Habbe

Grace Geil Most Improved Player Award

(Began in 1985)

- 1992—Kristy Langton
- 1991—Jodi Hinrichs
- 1990—Marti Kinzler
- 1989—Vicki Austin
- 1988—Karyn Ridgeway
- 1987—Jean McNulty
- 1986—Marti Leibenguth
- 1985—Kris Moede

Theresa Rhoads Award

(Given to the player who best exemplifies Lady Griz basketball)

- 1992—Jodi Hinrichs
- 1991—Terre Tracy
- 1990—Jean McNulty
- 1989—Jean McNulty
- 1988—Dawn Silliker
- 1987—Marti Leibenguth
- 1986—Natalie Streeter
- 1985—Sharla Muralt
- 1984—Doris Deden Hasquet
- 1983—Juli Eckmann

Outstanding Defensive Player Award

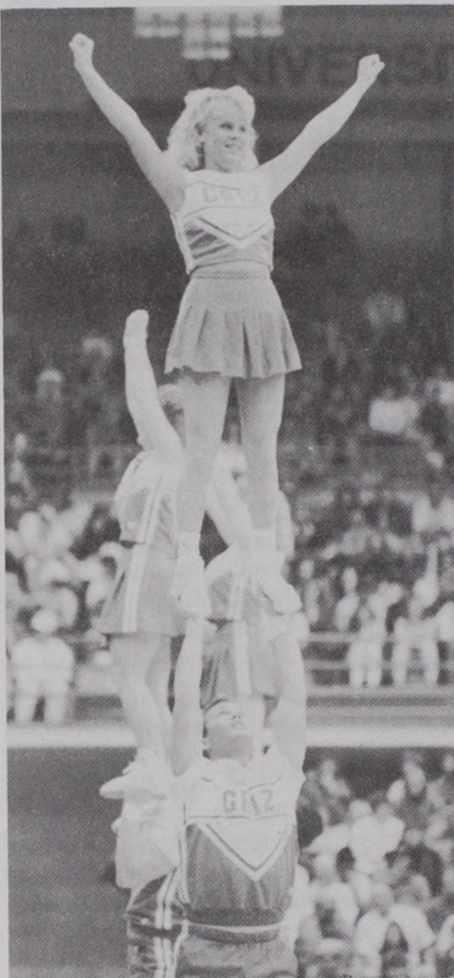
- 1992—Ann Lake
- 1991—Julie Epperly
- Terre Tracy
- 1990—Kris Haasl
- 1989—Lisa McLeod
- 1988—Lisa McLeod
- 1987—Margaret Williams
- 1986—Margaret Williams
- 1985—Anita Novak
- 1984—Anita Novak
- 1983—Shari Thesenvitz
- 1982—Cheri Bratt
- 1981—Sandy Selvig

All-Big Sky Selections

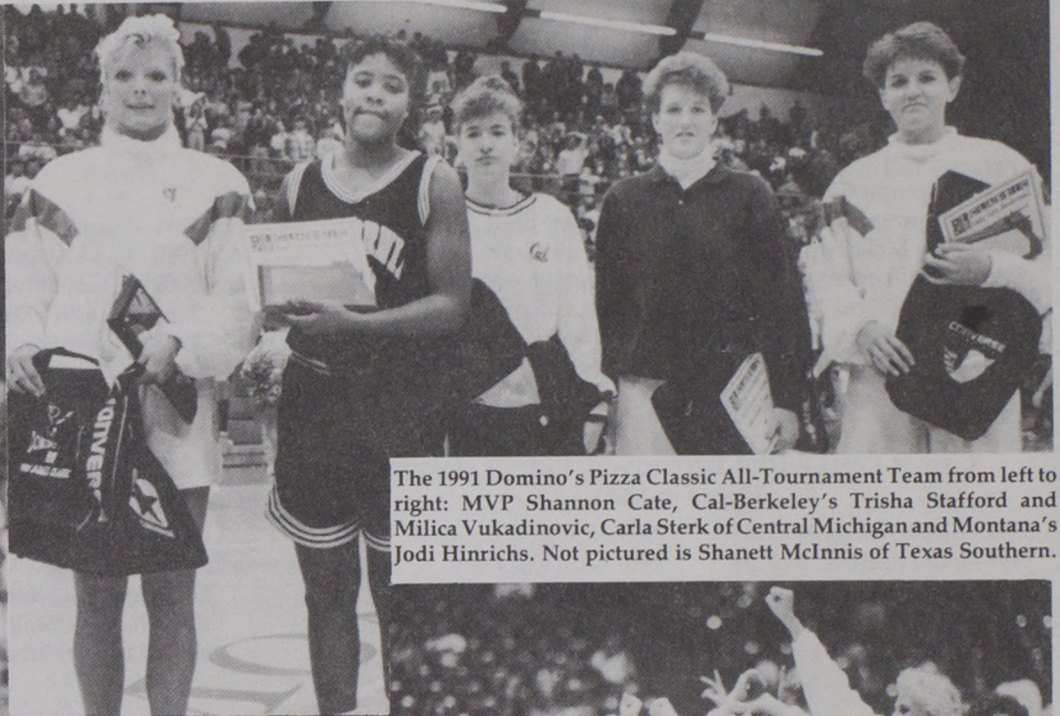
1991-1992	1990-91	1989-90	1988-89	1987-88
Shannon Cate	Shannon Cate	Jean McNulty	Lisa McLeod	Marti Leibenguth
Julie Epperly	Julie Epperly	Shannon Cate	Cheryl Brandell	Cheryl Brandell
Ann Lake	Marti Kinzler	Marti Kinzler	Vicki Austin	Marti Kinzler

LADY GRIZ POSTSEASON ACTION

- 1991-92: NCAA First Round: Defeated Wisconsin 85-74 away (8,353 Attendance)
Second Round: Lost to Southern Cal 71-59 away (1,059)
- 1990-91: NCAA First Round: Lost to Iowa 64-53 at home (8,575)
- 1989-90: NCAA First Round: Lost to Hawaii 83-78 at home (8,407)
- 1988-89: NCAA First Round: Defeated Cal State-Fullerton 82-67 at home (6,074)
Second Round: Lost to Texas 83-54 away (9,108)
- 1987-88: NCAA Second Round: Lost to Stanford 74-72 in overtime at home (8,709)
- 1986-87: WNIT: Lost to Arkansas 92-74 (600)
Defeated DePaul 75-73 (600)
Lost to Stephen F. Austin 78-68 (600)
- 1985-86: NCAA First Round: Defeated Utah 58-46 at home (2,267)
Second Round: Lost to Southern Cal 81-50 away (857)
- 1984-85: WNIT: Lost to Florida 70-49 (300)
Lost to West Texas State 71-66 (350)
Lost to West Virginia 62-60 (100)
- 1983-84: NCAA First Round: Defeated Oregon State 56-47 at home (4,030)
Second Round: Lost to Southern Cal 76-51 away (3,718)
- 1982-83: NCAA First Round: Lost to Northeast Louisiana 72-53 away (2,761)
- 1981-82: AIAW: Lost to Wayland Baptist 57-52 (Attendance unknown)
- 1980-81: AIAW: Lost to Oregon State 72-54 (Attendance unknown)
Defeated Washington 56-45 (Attendance unknown)



The Montana Cheer squad won five trophies at the 1992 UCA spirit camp.



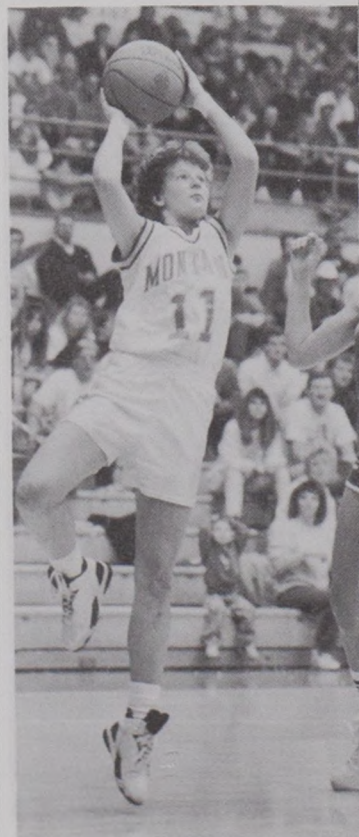
The 1991 Domino's Pizza Classic All-Tournament Team from left to right: MVP Shannon Cate, Cal-Berkeley's Trisha Stafford and Milica Vukadinovic, Carla Sterk of Central Michigan and Montana's Jodi Hinrichs. Not pictured is Shanett McInnis of Texas Southern.



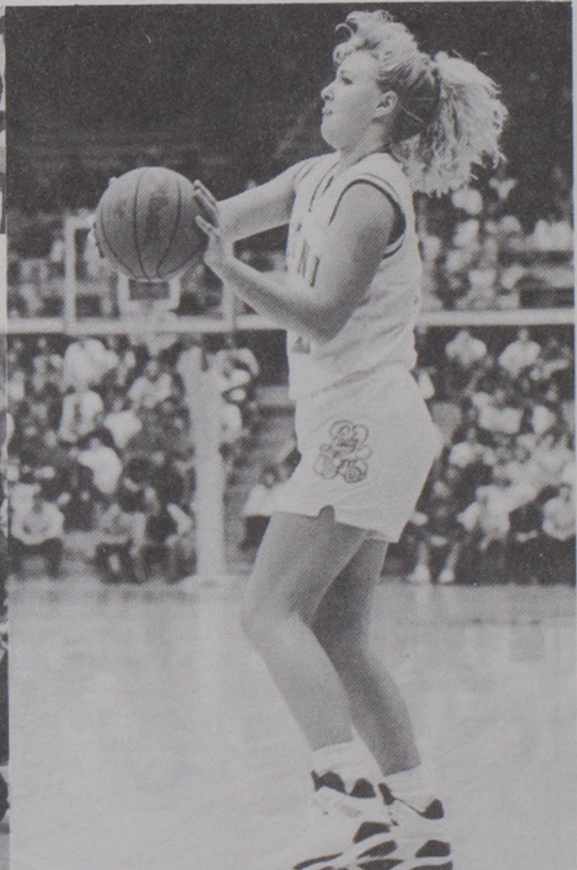
Montana's seniors Shannon Cate and Julie Epperly celebrate winning the 1992 Big Sky Championship in Boise, Idaho.



Winning the tournament in Boise, Idaho was something to celebrate.



Freshman Carla Beattie received votes last season for Big Sky Freshman of the Year.



Left, Concern is in the eyes of Robin Selvig and Annette Whitaker Rocheleau. Above, Montana's lone senior Joy Anderson returns to lead the Lady Griz this season.



Final 1991-92 Statistics



30 Games

Player	/.....TOTAL...../			/.....3 POINT.../			OFF DEF TOT													
	G/GS	FG/FGA	FG%	FG/FGA	FG%	FT/FTA	FT%	PTS	AVG	REB	REB	REB	AVG	PF/D	AST	TO	BLK	STL	MIN	
Shannon Cate	25/25	208/377	.552	41/84	.488	126/149	.846	583	23.3	48	141	189	7.6	49/1	82	74	23	45	755	
Trish Olson	3/1	17/27	.630	1/1	1.00	0/1	.000	35	11.7	6	5	11	3.7	7/0	3	3	2	4	87	
Ann Lake	30/29	137/273	.502	1/2	.500	71/152	.467	346	11.5	91	130	221	7.4	73/3	30	63	3	30	816	
Jodi Hinrichs	30/30	141/261	.540	0/0	.000	50/97	.516	332	11.1	108	164	272	9.1	92/3	11	48	52	28	793	
Carla Beattie	30/0	50/138	.362	28/82	.342	30/42	.714	158	5.3	22	36	58	1.9	29/0	30	46	0	13	423	
Julie Epperly	30/30	55/160	.344	13/39	.333	35/57	.614	158	5.3	8	42	50	1.7	57/1	119	86	3	32	747	
Kristy Langton	29/5	45/117	.385	15/48	.313	40/62	.645	145	5.0	29	62	91	3.1	39/0	38	35	10	22	430	
Joy Anderson	30/30	62/180	.345	11/38	.290	12/16	.750	147	4.9	15	49	64	2.1	38/1	78	62	0	38	723	
Kelly Pilcher	30/0	40/100	.400	3/21	.143	47/72	.653	130	4.3	3	45	48	1.6	58/2	87	72	1	38	480	
Jill Frohlich	29/0	43/113	.381	0/0	.000	3/15	.200	89	3.1	33	68	101	3.5	51/0	3	22	33	9	368	
Lora Morast	25/0	30/74	.405	0/0	.000	11/24	.458	71	2.8	23	43	66	2.6	32/1	12	11	4	10	252	
Kristin Omlid	26/0	9/31	.290	1/6	.167	15/19	.790	34	1.3	8	21	29	1.1	11/0	10	11	1	13	201	
Team Rebounds																				110
Montana																				
Lady Griz	30/30	837/1851	.452	114/321	.355	440/706	.623	2228	74.3	394	806	1310	43.7	536/12	503	533	132	282	---	
Opponent Team Rebounds																				128
Opponent Totals	30/30	666/1858	.359	129/410	.315	373/534	.699	1834	61.1	369	673	1170	39.0	627/22	448	604	83	239	---	

Per-Game Averages

Player	/.....TOTAL...../		/.....3 POINT.../		FT	FTA	PTS	REB	AST	TO	BLK	STL	MIN
	FG	FGA	FG	FGA									
Shannon Cate	8.3	15.1	1.6	3.4	5.0	6.0	23.3	7.6	3.3	3.0	.9	1.8	30.2
Trish Olson	5.7	9.0	.3	.3	.0	.3	11.7	3.7	1.0	1.0	.7	1.3	29.0
Ann Lake	4.6	9.1	.0	.1	2.4	5.1	11.5	7.4	1.0	2.1	.1	1.0	27.2
Jodi Hinrichs	4.7	8.7	.0	.0	1.7	3.2	11.1	9.1	.4	1.6	1.7	.9	26.4
Carla Beattie	1.7	4.6	.9	2.7	1.0	1.4	5.3	1.9	1.0	1.5	.0	.4	14.1
Julie Epperly	1.8	5.3	.4	1.3	1.2	1.9	5.3	1.7	4.0	2.9	.1	1.1	24.9
Kristy Langton	1.6	4.0	.5	1.7	1.4	2.1	5.0	3.1	1.3	1.2	.4	.8	14.8
Joy Anderson	2.1	6.0	.4	1.3	.4	.5	4.9	2.1	2.6	2.1	.0	1.3	24.1
Kelly Pilcher	1.3	3.3	.1	.7	1.6	2.4	4.3	1.6	2.9	2.4	.0	1.3	16.0
Jill Frohlich	1.5	3.9	.0	.0	.1	.5	3.1	3.5	.1	.8	1.1	.3	12.7
Lora Morast	1.2	3.0	.0	.0	.4	1.0	2.8	2.6	.5	.4	.2	.4	10.1
Kristin Omlid	.4	1.2	.0	.2	.6	.7	1.3	1.1	.4	.4	.0	.5	7.7
Lady Griz Totals	27.9	61.7	3.8	10.7	14.7	23.5	74.3	43.7	16.8	17.8	4.4	9.4	---
Opponent Totals	22.2	61.9	4.3	13.7	12.4	17.8	61.1	39.0	14.9	20.1	2.8	8.0	---

Score By Period	1	2	OT	OT	Total	Deadball Rebounds
Montana Lady Griz	1067	1131	21	9	2228	96
Opponent Totals	810	993	20	11	1834	57

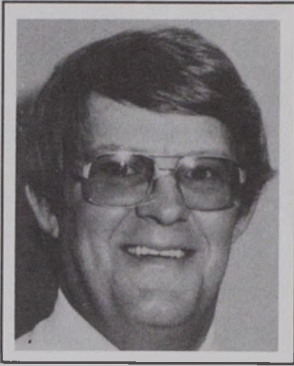
TOTAL AVERAGE ATTENDANCE	2589
HOME AVERAGE	3800
AWAY AVERAGE	1888
CUMULATIVE ATTENDANCE	77682
HOME	41803
AWAY	35879

Overall Team Record	23-7
Big Sky Conference	13-3
Rainbow Wahine Classic	1-2
Domino's Pizza Classic	2-0
Big Sky Championships	2-0
NCAA Championships	1-1

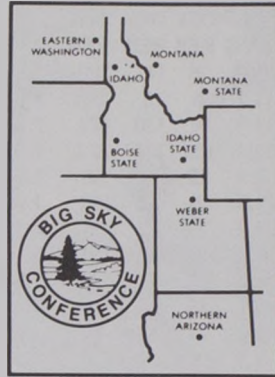


Montana hosted and won both the men's and women's Big Sky Conference Tournaments in 1991.

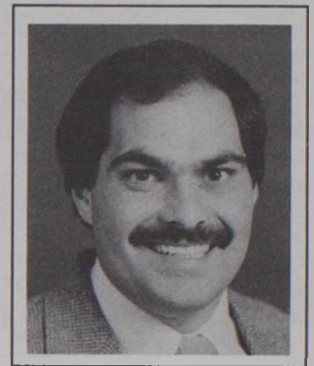
The Big Sky Athletic Conference



Ron Stephenson
Commissioner



Dr. Sharon Holmberg
Commissioner/Compliance



Arnie Sgalio
Commissioner/Information

The Big Sky Athletic Conference is currently in its 30th season and fourth decade of operation with championships being conducted in 12 sports, including men's and women's basketball, cross country, tennis, indoor and outdoor track and field, women's volleyball and football. The Big Sky has eight member institutions and is affiliated as NCAA Division I in all sports except football, which is classified as Division I-AA.

The 1992-93 athletic season in the Big Sky Conference is the fifth in which the league will sponsor championship competition in women's sports. On July 1, 1988, the Mountain West Athletic Conference located in Cheney, Wash., merged with the Big Sky, moving and combining office staffs in Boise, Idaho. The Mountain West Conference had been in existence since 1982.

The Big Sky Conference consists of Boise State University, Eastern Washington University, the University of Idaho, Idaho State University, The University of Montana, Montana State University, Northern Arizona University and Weber State University. Formed in 1963, the Big Sky consisted of charter members Idaho, Idaho State, Gonzaga University, Montana, Montana State and Weber State.

Boise State and Northern Arizona joined the league July 1, 1970 in the Big Sky's first expansion. Nevada was admitted to the league July 1, 1979, replacing former charter member Gonzaga. Nevada left the Big Sky on July 1, 1992. On July 1, 1987, Eastern Washington became a Big Sky member, the ninth in the league at that time. When all members of the Mountain West Conference and Big Sky Conference were parallel, the way was paved to merge the two leagues.

The Big Sky Conference has member institutions in five states and covers more than 220,000 square miles. The Big Sky is one

of two major conferences located in the Rocky Mountain region.

The name BIG SKY originated in a novel authored in 1947, by A. B. Guthrie of Great Falls, Mont., entitled *The Big Sky*. Jack Hollowell, former Montana Advertising Director, promoted the Big Sky theme for the Treasure State. Harry Missildine, of the Spokane Spokesman-Review, called for the conference to be named "the Big Sky Conference" in his column of February 20, 1963. On February 25, 1963, the Conference name was adopted by presidents of the newly formed league during a meeting in Spokane, Wash.

Ron Stephenson is the current Conference Commissioner, taking over the post July 1, 1981 from Steve Belko, who had served since 1977. John Robing was the league's second Commissioner, serving from 1971 until 1977. Jack Friel was the Big Sky's first Commissioner, serving from 1963 to 1971.

Dr. Sharon Holmberg currently serves as the Assistant Commissioner/Compliance Services of the Big Sky after guiding the Mountain West from its beginning in 1982 until its recent merger with the Big Sky.

Arnie Sgalio serves as the Big Sky's Assistant Commissioner/Information Services, beginning his 14th year in that position, while Stephanie Grimes is in her first year as the Assistant Information Director, coming to the Big Sky from Iowa State University.

Art Mendini is in his fifth year with the Big Sky as the league's first full-time Supervisor of Officials while Kay Johnson is the Big Sky's Administrative Assistant, in her sixth year at that post.

Also joining the Big Sky staff this season is Tamra Mander, the Big Sky's intern and a former University of Wyoming student.

Lady Griz & the Conference Playoffs

- 1991-92: Won the Big Sky Tournament, defeating Boise State 82-67
- 1990-91: Won the Big Sky Tournament, defeating Montana State 77-49
- 1989-90: Won the Big Sky Tournament, defeating Idaho 64-69
- 1988-89: Won the Big Sky Tournament, defeating Idaho 63-49
- 1987-88: Won the Mountain West Tournament, defeating Eastern Washington 79-53
- 1986-87: Placed second, losing to Eastern Washington 77-74
- 1985-86: Won the Mountain West Tournament, defeating Eastern Washington 65-39
- 1984-85: Placed second, losing to Idaho 80-57
- 1983-84: Won the Mountain West Tournament, defeating Eastern Washington 77-62
- 1982-83: Won the Mountain West Tournament, defeating Weber State 66-63
- 1981-82: Placed first in the Northwest Women's Basketball League (12-0)
- 1980-81: Placed third in the Northwest Women's Basketball League (9-3)
- 1979-80: Placed fourth in the Northwest Women's Basketball League (7-6)
- 1978-79: Placed fourth in the Northwest Women's Basketball League (5-6)

Big Sky Conference Final Standings

	League	Overall
1991-92: 1. Montana	13-3	23-7
2. Boise State	14-2	22-7
3. Montana State	11-5	14-13
4. Idaho	9-7	16-13
5. Idaho State	8-8	12-15
6. Weber State	7-9	12-15
7. Eastern Washington	5-11	11-18
8. Nevada	5-11	8-18
9. Northern Arizona	0-16	7-20

	League	Overall
1990-91: 1. Montana	16-0	26-4
2. Montana State	11-5	19-10
3. Weber State	10-6	14-14
4. Idaho State	9-7	15-14
5. Boise State	8-8	11-16
6. Eastern Washington	7-9	9-18
7. Idaho	7-9	13-14
8. Nevada	3-13	5-22
9. Northern Arizona	1-15	1-26

	League	Overall
1989-90: 1. Montana	16-0	27-3
2. Idaho	11-5	20-9
3. Boise State	11-5	19-12
4. Eastern Washington	7-9	11-17
5. Montana State	7-9	12-15
6. Idaho State	6-10	13-14
7. Northern Arizona	6-10	11-17
8. Weber State	6-10	10-18
9. Nevada	2-14	6-21

	League	Overall
1988-89: 1. Montana	16-0	27-4
2. Idaho	11-5	18-11
3. Boise State	10-6	18-10
4. Weber State	10-6	17-9
5. Montana State	10-6	16-11
6. Eastern Washington	6-10	10-16
7. Northern Arizona	6-10	12-14
8. Idaho State	3-13	7-19
9. Nevada	0-16	2-25

	League	Overall
1987-88: 1. Montana	15-1	28-2
2. Eastern Washington	11-5	17-10
3. Montana State	14-2	24-6
4. Boise State	10-6	18-10
5. Northern Arizona	8-8	14-5
6. Idaho	4-12	7-20
7. Idaho State	4-12	9-16
8. Weber State	4-12	8-19
9. Nevada	2-14	9-18

	League	Overall
1986-87: 1. Eastern Washington	10-2	18-11
2. Montana	12-0	25-3
3. Montana State	7-5	16-12
4. Weber State	7-5	11-16
5. Idaho State	3-9	10-15
6. Idaho	3-9	8-19
7. Boise State	2-10	10-17

	League	Overall
1985-86: 1. Montana	13-1	27-4
2. Idaho	11-3	26-5
3. Eastern Washington	9-5	15-12
4. Montana State	7-7	13-12
5. Boise State	5-9	13-13
6. Weber State	5-9	11-15
7. Portland State	4-10	8-17
8. Idaho State	2-12	5-21

	League	Overall
1984-85: 1. Idaho	13-1	28-2
2. Montana	11-3	22-7
3. Eastern Washington	11-3	20-7
4. Weber State	5-9	8-20
5. Boise State	5-9	13-14
6. Portland State	4-10	11-16
7. Idaho State	4-10	10-16
8. Montana State	3-11	17-19

	League	Overall
1983-84: 1. Montana	14-0	23-3
2. Eastern Washington	12-2	20-6
3. Idaho	9-5	21-9
4. Montana State	8-6	16-8
5. Weber State	6-8	12-15
6. Boise State	4-10	11-16
7. Portland State	2-12	4-23
8. Idaho State	1-13	7-19

	League	Overall
1982-83: 1. Montana	13-1	24-3
2. Weber State	11-3	22-10
3. Idaho	8-6	18-10
4. Montana State	6-8	11-14
5. Portland State	6-8	12-15
6. Eastern Washington	5-9	11-16
7. Boise State	4-10	10-16
8. Idaho State	3-11	18-18



Julie Epperly and Shannon Cate with Montana's eighth Big Sky Championship trophy.

Past Big Sky / Mountain West Championship Results

1992—Boise State University—Boise, Idaho

First Round: Boise State over Idaho 69-60

Montana over Montana State 73-69

Championship: Montana over Boise State 82-67

MVP: Shannon Cate, Montana

1991—University of Montana—Missoula, Mont.

First Round: Montana over Idaho State 91-49

Montana State over Weber State 60-56

Championship: Montana over Montana State 77-48

MVP: Shannon Cate, Montana

1990—University of Montana—Missoula, Mont.

First Round: Montana over Eastern Washington 72-61

Idaho over Boise State 91-72

Championship: Montana over Idaho 64-49

MVP: Shannon Cate, Montana

1989—University of Montana—Missoula, Mont.

First Round: Montana over Weber State 76-59

Idaho over Boise State 56-52

Championship: Montana over Idaho 63-49

MVP: Vicki Austin, Montana

1988—University of Montana—Missoula, Mont.

First Round: Montana over Boise State 73-54

Eastern Washington over Montana State 81-65

Championship: Montana over Eastern Washington 79-53

MVP: Marti Leibenguth, Montana

1987—University of Montana—Missoula, Mont.

First Round: Montana over Montana State 64-56

Eastern Washington over Weber State 71-65

Championship: Eastern Washington over Montana 77-74

MVP: Brenda Souther, Eastern Washington

1986—University of Montana—Missoula, Mont.

First Round: Montana over Montana State 63-59

Eastern Washington over Idaho 62-60

Championship: Montana over Eastern Washington 65-39

1985—University of Idaho—Moscow, Idaho

First Round: Montana over Eastern Washington 66-65

Idaho over Weber State 94-68

Championship: Idaho over Montana 80-57

1984—University of Montana—Missoula, Mont.

First Round: Montana over Montana State 84-66

Eastern Washington over Idaho 82-71

Championship: Montana over Eastern Washington 77-62

1983—University of Montana—Missoula, Mont.

First Round: Montana over Montana State 75-57

Weber State over Idaho 88-66

Championship: Montana over Weber State 66-63

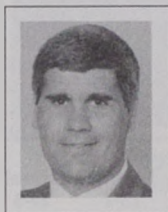
1992-93 Lady Griz Opponents



Jeanie Wilson
Head Coach



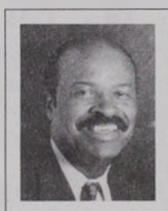
Debbie Dimond



Bob Foley
Head Coach



Jennifer Mead



Jim Lewis
Head Coach



Nickie Hilton



Gina Castelli
Head Coach



Liz Lops



Cheryl Burnett
Head Coach



Secelia Winkfield



Julie Holt
Head Coach



Ivy Safranski



Harold Rhodes
Head Coach



Camille Thompson

BRIGHAM YOUNG-December 3

Location: Provo, Utah
Conference: Western Athletic
Nickname: Cougars
Colors: Royal Blue and White
Enrollment: 26,900
Letter Winners/Starters Returning: 8/3
Athletic Director: Lu Wallace
SID: Patricia Knoell
FAX Phone: (801) 378-3520

Head Coach: Jeanie Wilson
Alma Mater: BYU, 1974
Record @ BYU: 39-46, 4 Yrs.
Overall Record: Same
1991-92 Record: 21-8
Conference Record/Finish: 12-2/2nd
Home Court: Marriott Center (22,700)
SID Phone: (801) 378-4908
Press Row Phone: (801) 378-3675

PROVIDENCE—December 5-6—Clearly Canadian Classic

Location: Providence
Conference: Big East
Nickname: Lady Friars
Colors: Black & White
Enrollment: 3,800
Letter Winners/Starters Returning: 7/3
Athletic Director: John Marinatto
SID: Gregg Burke
FAX Phone: (401) 865-2583

Head Coach: Bob Foley
Alma Mater: Villanova, 1974
Record @ PC: 156-61, 7 Yrs.
Overall Record: Same
1991-92 Record: 21-9
Conference Record/Finish: 13-5, T2nd
Home Court: Alumni Hall, (3,800)
SID Phone: (401) 865-865-2272
Press Row Phone: (401) 865-2272

GEORGE MASON—December 5-6—Clearly Canadian Classic

Location: Fairfax, Virginia
Conference: Colonial Athletic Association
Nickname: Lady Patriots
Colors: Green & Gold
Enrollment: 20,308
Letter Winners/Starters Returning: 8/3
Athletic Director: Jack Kvanecz
SID: Luann Peterson
FAX Phone: (703) 993-3259

Head Coach: Jim Lewis
Alma Mater: West Virginia, 1968
Record @ GMU: 118-111, 8 Yrs.
Overall Record: Same
1991-92 Record: 15-13
Conference Record/Finish: 7-7/5th
Home Court: Patriot Center (10,000)
SID Phone: (703) 993-3260
Press Row Phone: (703) 993-3044

SIENA COLLEGE—December 5-6—Clearly Canadian Classic

Location: Loudonville, New York
Conference: Metro Atlantic Athletic
Nickname: Saints
Colors: Green & Gold
Enrollment: 2,700
Letter Winners/Starters Returning: 8/3
Athletic Director: John D'Argenio
SID: Meg Culhane
FAX Phone: (518) 783-2992

Head Coach: Gina Castelli
Alma Mater: Canisius, 1986
Record @ SC: 32-24, 3 Yrs.
Overall Record: Same
1991-92 Record: 11-17
Conference Record/Finish: 7-9, 6th
Home Court: Alumni Rec Center (4,000)
SID Phone: (518) 783-2411
Press Row Phone: (518) 783-2411

SOUTHWEST MISSOURI STATE—December 11

Location: Springfield, Missouri
Conference: Missouri Valley
Nickname: Lady Bears
Colors: Maroon & White
Enrollment: 20,672
Letter Winners/Starters Returning: 5/3
Athletic Director: Bill Rowe
SID: Jon Ripperger
FAX Phone: (417) 836-4868

Head Coach: Cheryl Burnett
Alma Mater: Kansas, 1981
Record @ SMSU: 92-53, 5 Yrs.
Overall Record: Same
1991-92 Record: 31-3
Conference Record/Finish*: 17-1, 1st
Home Court: Hammons Center (8,858)
SID Phone: (417) 846-5402
Press Row Phone: (417) 846-4150

*—Southwest Missouri State competed in the Gateway Conference in 1991-92.

GONZAGA—December 20

Location: Spokane, Washington
Conference: West Coast
Nickname: Bulldogs, Zags
Colors: Blue, White & Red
Enrollment: 4,200
Letter Winners/Starters Returning: 8/5
Athletic Director: Dan Fitzgerald
SID: Oliver Pierce
FAX Phone: (509) 484-2830

Head Coach: Julie Holt
Alma Mater: Stephen F. Austin, 1979
Record @ GU: 31-51, 3 Yrs.
Overall Record: 104-169, 10 Yrs.
1991-92 Record: 8-19
Conference Record/Finish: 5-9, 6th
Home Court: Martin Centre (4,000)
SID Phone: (509) 328-4220 Ext. 6373
Press Row Phone: (509) 328-4220 Ext. 4224

WASHINGTON STATE-December 21

Location: Pullman, Washington
Conference: Pac-10
Nickname: Cougars
Colors: Crimson & Gray
Enrollment: 17,500
Letter Winners/Starters Returning: 9/3
Athletic Director: Jim Livengood
SID: Rod Commons
FAX Phone: (509) 335-0267

Head Coach: Harold Rhodes
Alma Mater: Washington State, 1977
Record @ WSU: 113-161, 10 Yrs.
Overall Record: Same
1991-92 Record: 12-15
Conference Record/Finish: 5-13, 8th
Home Court: Bohler Gym (3,500)
SID Phone: (509) 335-0270
Press Row Phone: (509) 335-0270

1992-93 Lady Griz Opponents



Janet Cone
Head Coach



Lori Lyons



Linda Ziemke
Head Coach



Becca Bright



Bill Agronin
Head Coach



Kim Kuhn



Lisa Bluder
Head Coach



Kristi Kinne



Theresa Becker
Head Coach



Shanda Fitzgerald



Jim Sollars
Head Coach



Tina Geis



Larry Shurtliff
Head Coach



Apryl Brainard

WESTERN CAROLINA—Dec. 29-30—Western States Showdown

Location: Cullowhee, North Carolina
Conference: Southern Conference
Nickname: Lady Catamounts
Colors: Purple & Gold
Enrollment: 6,500
Letter Winners/Starters Returning: 8/3
Athletic Director: Larry Travis
SID: Steve White
FAX Phone: (704) 227-7688

Head Coach: Janet Cone
Alma Mater: Furman, 1978
Record @ WCU: 10-45, 2 Yrs.
Overall Record: 63-101, 6 Yrs.
1991-92 Record: 6-22
Conference Record/Finish: 1-9, 6th
Home Court: Ramsey Center (7,826)
SID Phone: (704) 227- 7171
Press Row Phone: (704) 227-7171

RHODE ISLAND—Dec. 29-30—Western States Showdown

Location: Kingston, Rhode Island
Conference: Atlantic 10
Nickname: WRams
Colors: Keaney Blue & White
Enrollment: 12,500
Letter Winners/Starters Returning: 8/4
Athletic Director: Rob Petro
SID: Dawn Wright
FAX Phone: (401) 792-5354

Head Coach: Linda Ziemke
Alma Mater: West Chester State, 1973
Record @ URI: 20-65, 3 Yrs.
Overall Record: 150-184, 13 Yrs.
1991-92 Record: 8-20
Conference Record/Finish: 4-12, 7th
Home Court: Keaney Gym (5,000)
SID Phone: (401) 792- 2409
Press Row Phone: (401) 792-5359

NIAGARA - December 29-30 - Western States Showdown

Location: Lewiston, New York
Conference: Metro Atlantic Athletic
Nickname: Lady Eagles
Colors: Purple, White & Gold
Enrollment: 2,400
Letter Winners/Starters Returning: 7/4
Athletic Director: Mike Jankowski
SID: Jim Mauro
FAX Phone: (716) 286-8581

Head Coach: Bill Agronin
Alma Mater: Jacksonville, 1970
Record @ NU: First Season
Overall Record: First Season
1991-92 Record: 10-18
Conference Record/Finish: 6-10, 7th
Home Court: Gallagher Center (3,200)
SID Phone: (716) 286- 8588
Press Row Phone: (716) 286-8588

DRAKE - January 3

Location: Des Moines, Iowa
Conference: Missouri Valley
Nickname: Bulldogs
Colors: Blue & White
Enrollment: 8,096
Letter Winners/Starters Returning: 7/2
Athletic Director: Lynn King
SID: Mike Mahon
FAX Phone: (515) 271-3015

Head Coach: Lisa Bluder
Alma Mater: Northern Iowa, 1983
Record @ DU: 24-32, 2 Yrs.
Overall Record: 193-67, 8 Yrs.
1991-92 Record: 11-15
Conference Record/Finish: 7-11, 16th
Home Court: Drake Arena (7,000)
SID Phone: (515) 271- 3012
Press Row Phone: (515) 271-4878

IOWA STATE - January 6

Location: Ames, Iowa
Conference: Big Eight
Nickname: Cyclones
Colors: Cardinal & Gold
Enrollment: 24,589
Letter Winners/Starters Returning: 8/3
Athletic Director: Max Urick
SID: Beth Haag
FAX Phone: (515) 294-0558

Head Coach: Theresa Becker
Alma Mater: Southeast Missouri State, 1981
Record @ ISU: First Year
Overall Record: First Year
1991-92 Record: 4-23
Conference Record/Finish: 2-12, 8th
Home Court: Hilton Coliseum (14,020)
SID Phone: (515) 294-3372
Press Row Phone: (515) 294-6178

PORTLAND - January 10

Location: Portland, Oregon
Conference: West Coast Conference
Nickname: Pilots
Colors: Purple & White
Enrollment: 2,400
Letter Winners/Starters Returning: 9/3
Athletic Director: Joe Etzel
SID: Steve Walker
FAX Phone: (503) 283-7242

Head Coach: Jim Sollars
Alma Mater: Seattle Pacific, 1966
Record @ UP: 65-102, 6 Yrs.
Overall Record: 88-159, 9 Yrs.
1991-92 Record: 14-14
Conference Record/Finish: 10-4, 11st
Home Court: Chiles Center (5,000)
SID Phone: (503) 283- 7117
Press Row Phone: (503) 283-7527

SOUTHERN UTAH STATE - February 1

Location: Cedar City, Utah
Conference: Independent
Nickname: Thunderbirds
Colors: Scarlet, Royal Blue & White
Enrollment: 4,500
Letter Winners/Starters Returning: 4/4
Athletic Director: Jack Bishop
SID: Jim Robinson
FAX Phone: (801) 865-8077

Head Coach: Larry Shurtliff
Alma Mater: Utah State, 1964
Record @ SUSU: 6-21, 1 Yr.
Overall Record: 6- 21, 1 Yr.
1991-92 Record: 6-21
Conference Record/Finish: NA
Home Court: Centrum (5,300)
SID Phone: (801) 586- 7752
Press Row Phone: (801) 586-7858

1992-93 Lady Griz Opponents



June Daugherty
Head Coach

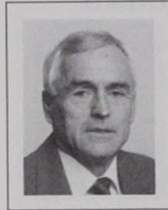


April Cline

BOISE STATE - January 29 & February 25

Location: Boise, Idaho
Conference: Big Sky
Nickname: Broncos
Colors: Blue & Orange
Enrollment: 14,500
Letter Winners/Starters Returning: 8/4
Athletic Director: Carol Ladwig
SID: Lori Orr Hays
FAX Phone: (208) 385-3361

Head Coach: June Daugherty
Alma Mater: Ohio State, 1978
Record @ BSU: 52-35, 3 Yrs.
Overall Record: Same
1991-92 Record: 22-7
Conference Record/Finish: 14-2, 1st
Home Court: BSU Pavilion (12,200)
SID Phone: (208) 385-3438
Press Row Phone: (208) 385-1503



Bill Smithpeters
Head Coach



Heather Vogler

EASTERN WASHINGTON - January 16 & February 12

Location: Cheney, Washington
Conference: Big Sky
Nickname: Eagles
Colors: Red & White
Enrollment: 8,000
Letter Winners/Starters Returning: 8/2
Athletic Director: Dick Zornes
SID: Dave Cook
FAX Phone: (509) 359-2828

Head Coach: Bill Smithpeters
Alma Mater: Otterbein, 1957
Record @ EWU: 273-193, 16 Yrs.
Overall Record: Same
1991-92 Record: 11-18
Conference Record/Finish: 5-11, 7th
Home Court: Reese Court (5,000)
SID Phone: (509) 359-6334
Press Row Phone: (509) 359-6334



Laurie Turner
Head Coach



Brenda Kuehlthau

IDAHO - January 15 & February 13

Location: Moscow, Idaho
Conference: Big Sky
Nickname: Vandals
Colors: Silver & Gold
Enrollment: 14,202
Letter Winners/Starters Returning: 8/3
Athletic Director: Pete Liske
SID: Beth Myatt
FAX Phone: (208) 885-0255

Head Coach: Laurie Turner
Alma Mater: Washington State, 1979
Record @ UI: 82-86, 6 Yrs.
Overall Record: 159-119, 10 Yrs.
1991-92 Record: 16-13
Conference Record/Finish: 9-7, 4th
Home Court: Memorial Gym (3,000)
SID Phone: (208) 885-0245
Press Row Phone: (208) 885-0211



Ted Anderson
Head Coach



Sherlyn Steele

IDAHO STATE - January 30 & February 27

Location: Pocatello, Idaho
Conference: Big Sky
Nickname: Bengals
Colors: Orange & Black
Enrollment: 11,037
Letter Winners/Starters Returning: 5/2
Athletic Director: Randy Hoffman
SID: Dave Geringer
FAX Phone: (208) 236-3659

Head Coach: Ted Anderson
Alma Mater: Western Montana, 1966
Record @ ISU: 56-78, 5 Yrs.
Overall Record: 158-136, 11 Yrs.
1991-92 Record: 12-15
Conference Record/Finish: 8-8, 5th
Home Court: Reed Gym (3,600)
SID Phone: (208) 236-2621
Press Row Phone: (208) 236-2952



Judy Spoelstra
Head Coach



Anna Wherry

MONTANA STATE - February 6 & March 5

Location: Bozeman, Montana
Conference: Big Sky
Nickname: Bobcats
Colors: Blue & Gold
Enrollment: 10,700
Letter Winners/Starters Returning: 10/4
Athletic Director: Ginny Hunt
SID: Tom Schulz
FAX Phone: (406) 994-4102

Head Coach: Judy Spoelstra
Alma Mater: Oregon State, 1983
Record @ MSU: 45-38, 3 Yrs.
Overall Record: Same
1991-92 Record: 14-13
Conference Record/Finish: 11-5 3rd
Home Court: Worthington Arena (7,842)
SID Phone: (406) 994-5130
Press Row Phone: (406) 994-3210



Linda Bruns
Head Coach



Cristina Willis

NORTHERN ARIZONA - January 23 & February 18

Location: Flagstaff, Arizona
Conference: Big Sky
Nickname: Lady Jacks
Colors: Blue & Gold
Enrollment: 17,636
Letter Winners/Starters Returning: 10/4
Athletic Director: Tom Jurich
SID: Kim Tomkins, Tom Stark
FAX Phone: (602) 523-6793

Head Coach: Linda Bruns
Alma Mater: Montana, 1964
Record @ NAU: 8-46, 2 Yrs.
Overall Record: 183-192, 13 Yrs.
1991-92 Record: 7-20
Conference Record/Finish: 0-16, 9th
Home Court: Walkup Skydome (9,500)
SID Phone: (602) 523-6330
Press Row Phone: (602) 523-7724 or 7725



Carla Taylor
Head Coach

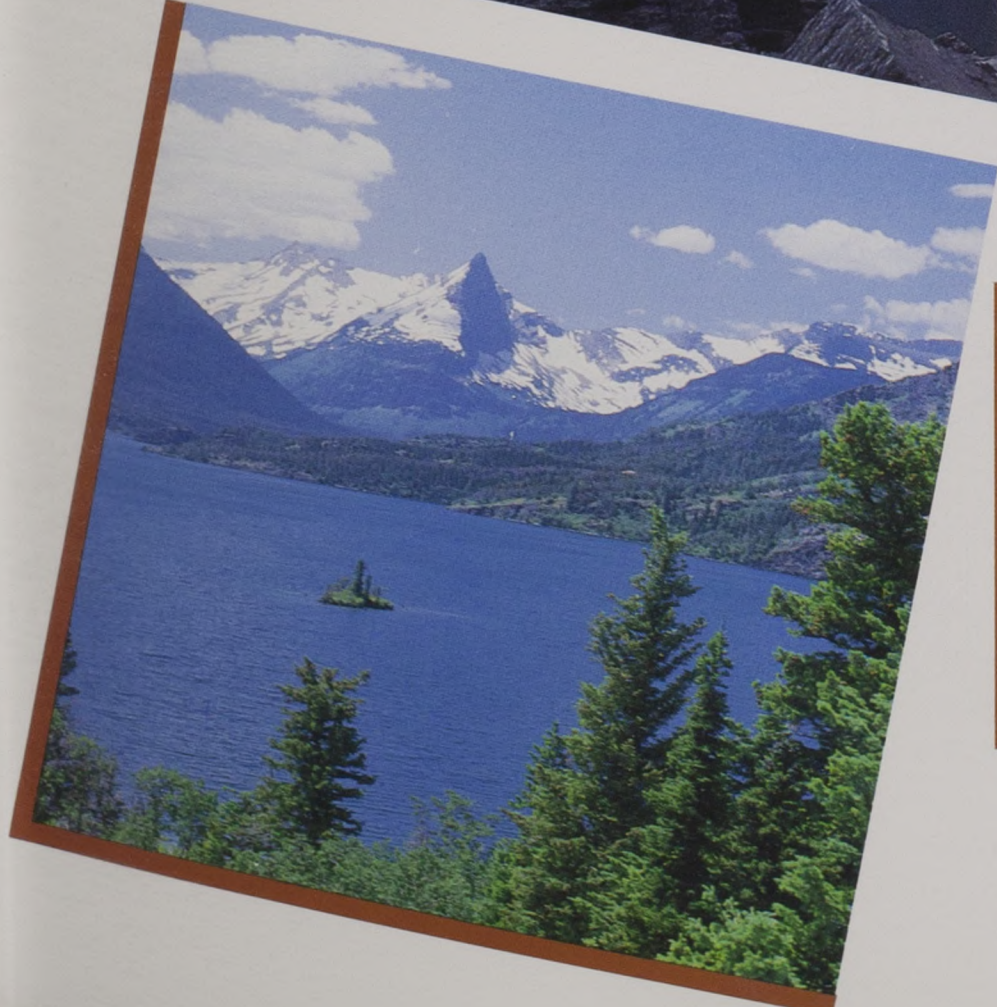


Jodi Ferre

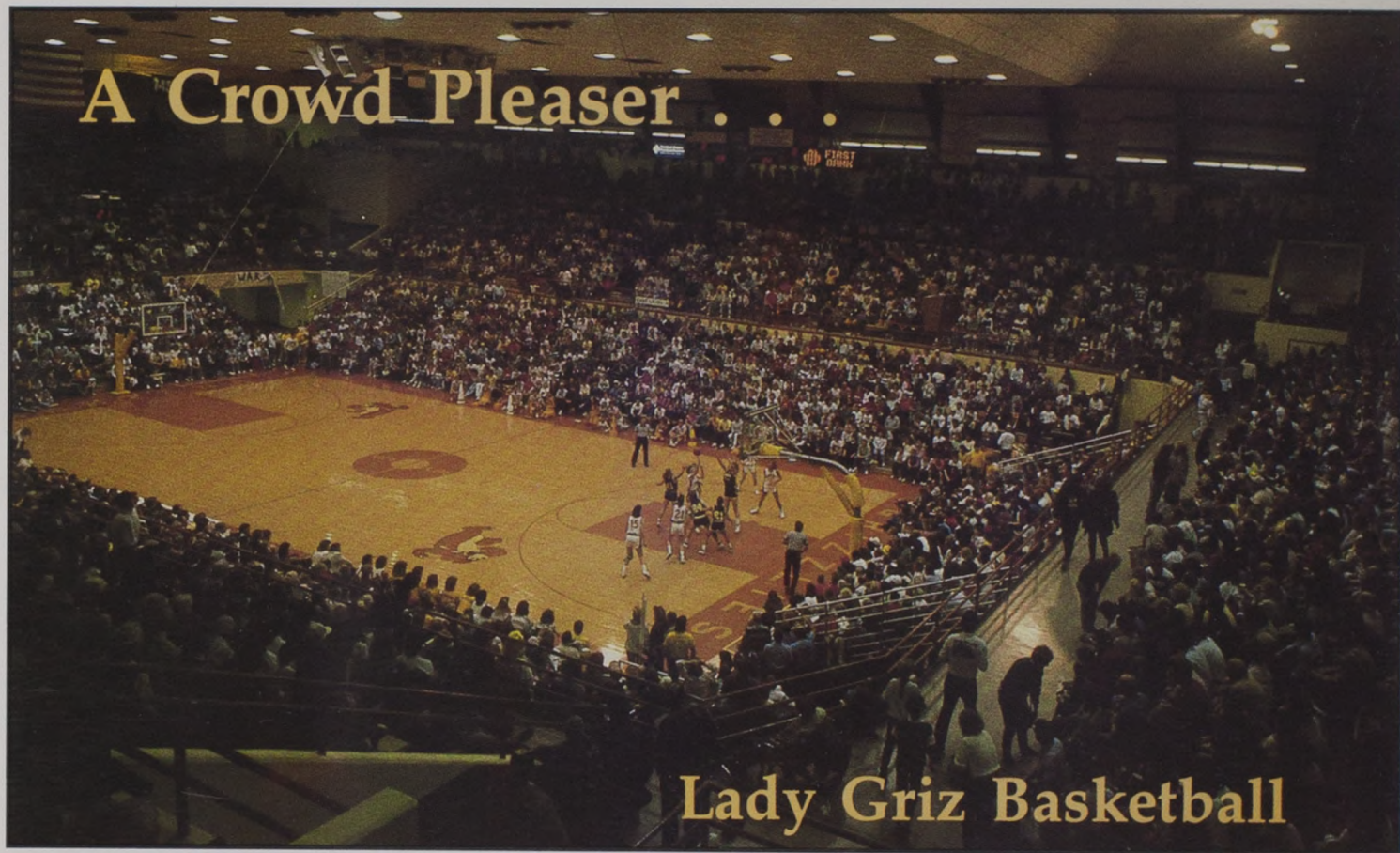
WEBER STATE - January 21 & February 20

Location: Ogden, Utah
Conference: Big Sky
Nickname: Lady Wildcats
Colors: Purple & White
Enrollment: 14,500
Letter Winners/Starters Returning: 3/1
Athletic Director: Tom Stewart
SID: Nan Holyoak
FAX Phone: (801) 626-6490

Head Coach: Carla Taylor
Alma Mater: Weber State, 1984
Record @ WSU: 53-56, 4 Yrs.
Overall Record: Same
1991-92 Record: 12-15
Conference Record/Finish: 7-9, 6th
Home Court: Dee Events Center (11,500)
SID Phone: (801) 626-6012
Press Row Phone: (801) 626-6588



A Crowd Pleaser . . .



Lady Griz Basketball

THE PHOTO ABOVE is the Montana-Montana State game in February of 1988 when a record high of 9,258 fans came to watch the intra-state rivalry in Dahlberg Arena. The Lady Griz won that game 67-59 as Lisa McLeod scored 18 points. Dahlberg Arena is the site of the 1993 NCAA Division I Women's Basketball West Regional tournament. This photo was provided by Geoffrey Sutton.



Ranking

The University of Montana Lady Griz were ranked as high as **13th in the Associated Press Poll** during the 1987-88 season. UM received votes in both the AP and the USA Today polls throughout the 1991-92 season.



Postseason

The Lady Griz have participated in postseason tournaments the last 14 seasons in-a-row, including **eight NCAA tournaments**. In 1991-92, UM defeated Wisconsin in Madison, then lost to Southern Cal in the second round.



Attendance

For the last four years in-a-row, the Lady Griz have been ranked in the **top ten in attendance among Division I schools**. Last season Montana was seventh, averaging 3,800 fans per home game, a figure which set a new school record. UM had one of the biggest crowds in the nation with 9,258 at an intra-state battle against Montana State in 1988 (see photo above).



20-Win Seasons

The Lady Griz have one of the **Top 5 winningest programs in the nation** over the past decade. Montana has won at least 20 games each of the last 12 seasons and has a record of 254-49 during the 1980s.



Head Coach Robin Selvig

The **seventh winningest active Division I coach**, former

Grizzly standout Robin Selvig has a school record of 335 victories. His overall record is 335-83 for a winning percentage of 80 percent. His teams have won regular season titles nine of the past 11 seasons. Selvig has earned 13 Coach of the Year awards from the conference and the district.

SELVIG'S YEAR-BY-YEAR RECORDS

1978-79	13-13	Conference Tournament
1979-80	19-10	Conference Tournament
1980-81	22-8	Conference Tournament
1981-82	22-5	AIAW National Tournament
1982-83	26-4	NCAA Tournament
1983-84	27-4	NCAA Tournament (Sweet 16)
1984-85	22-10	Women's NIT
1985-86	27-4	NCAA Tournament (2nd Round)
1986-87	26-5	Women's NIT
1987-88	28-2	NCAA Tournament (2nd Round)
1988-89	27-4	NCAA Tournament (2nd Round)
1989-90	27-3	NCAA Tournament (1st Round)
1990-91	26-4	NCAA Tournament (1st Round)
1991-92	23-7	NCAA Tournament (2nd Round)