

9-1-1970

1970 Grizzly Football Yearbook

University of Montana—Missoula. Athletics Department

Let us know how access to this document benefits you.

Follow this and additional works at: https://scholarworks.umt.edu/grizzlyfootball_yearbooks

Recommended Citation

University of Montana—Missoula. Athletics Department, "1970 Grizzly Football Yearbook" (1970). *Grizzly Football Yearbook, 1939-2018*. 18.

https://scholarworks.umt.edu/grizzlyfootball_yearbooks/18

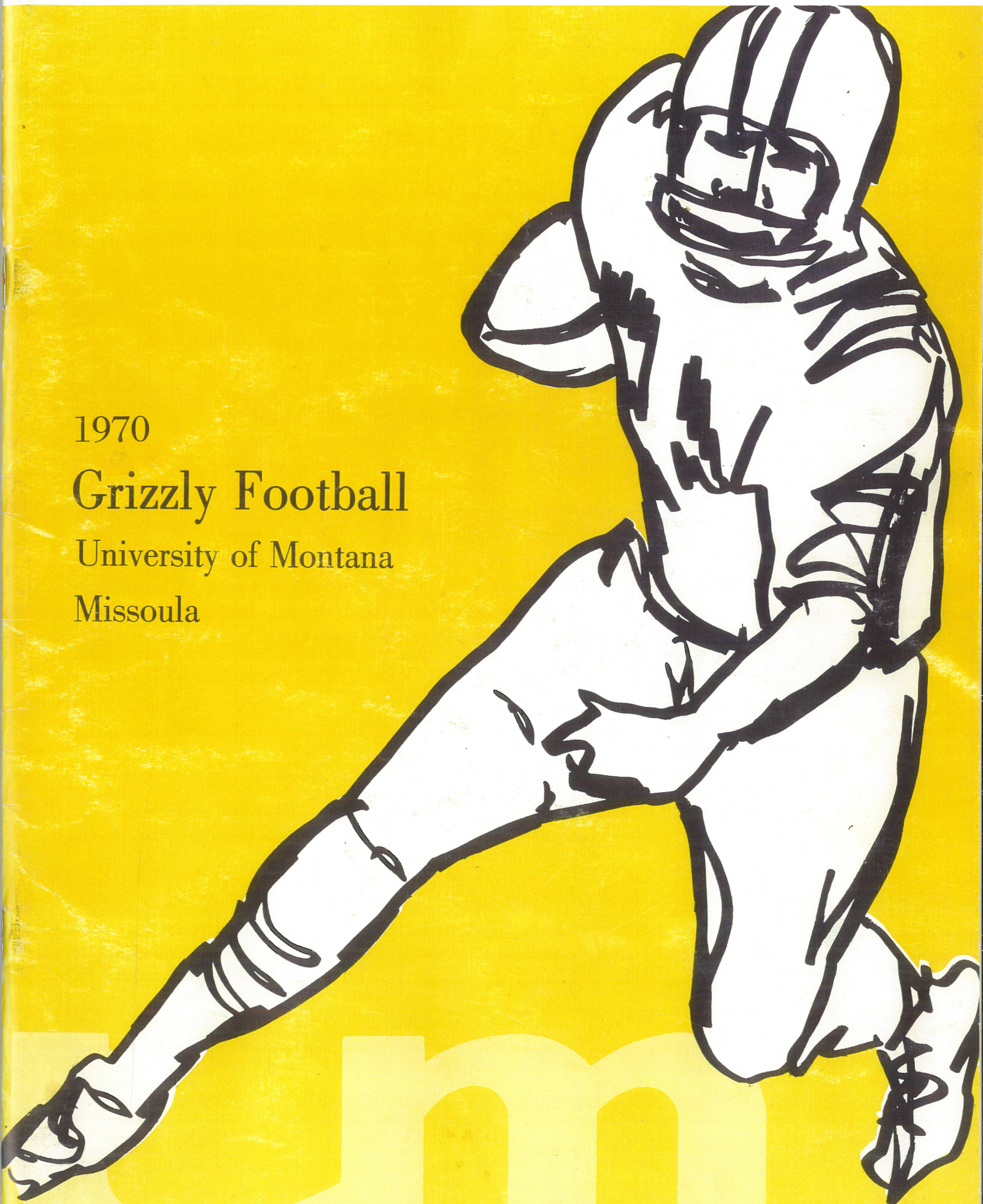
This Yearbook is brought to you for free and open access by the Intercollegiate Athletics at ScholarWorks at University of Montana. It has been accepted for inclusion in Grizzly Football Yearbook, 1939-2018 by an authorized administrator of ScholarWorks at University of Montana. For more information, please contact scholarworks@mso.umt.edu.

1970

Grizzly Football

University of Montana

Missoula



1970 Schedule

Sept. 12	North Dakota	Billings	8:00 MDT
Sept. 19	Northern Illinois	Dekalb	7:30 CDT
Sept. 26	Northern Arizona	Flagstaff	1:30 MDT
Oct. 3	Weber State	Missoula	1:30 MDT
Oct. 10	Idaho	Pullman	1:30 PDT
Oct. 17	Idaho State	Pocatello	8:00 MDT
Oct. 24	South Dakota	Vermillion	1:30 CDT
Oct. 31	Portland State (Homecoming)	Missoula	2:15 MST
Nov. 7	Montana State	Missoula	1:30 MST
Nov. 14	South Dakota State	Brookings	1:30 CST

1969 Results

(10-0)

Undefeated Big Sky Champions—Camellia Bowl

UM	Opponent	Opp. Score	Where
24	North Dakota	10	Grand Forks
31	South Dakota	20	Great Falls
52	Northern Arizona	7	Missoula
20	Weber State	17	Ogden
34	Idaho	9	Missoula
46	Idaho State	36	Missoula
49	Portland State	14	Portland
7	Montana State	6	Bozeman
14	Cal Poly-San Luis Obispo	0	Missoula
58	South Dakota State	0	Missoula

1970 Football Brochure

University of Montana, Missoula

Editor Don Brunell

Contents

University of Montana, Missoula	2
President Robert T. Pantzer	3
Coaches	4
1970 Grizzly Outlook	6
10-0 It Happened Like This	7
The Tip Lineup	10
Player Profiles	11
'69 Grizzly Greats	14
1970 Schedule	16
Cubs to Watch	18
1969 Montana Statistics	19
1969 Big Sky Statistics	20
Ten-Year Game Results	21
Records	22
Fighting Grizzly Marching Band	25
1970 Cheerleaders	25
1969 Big Sky Cross Country Champs	26
Grizzly Basketball	27
Sports Complex	28
Press Information	inside back cover

Personnel

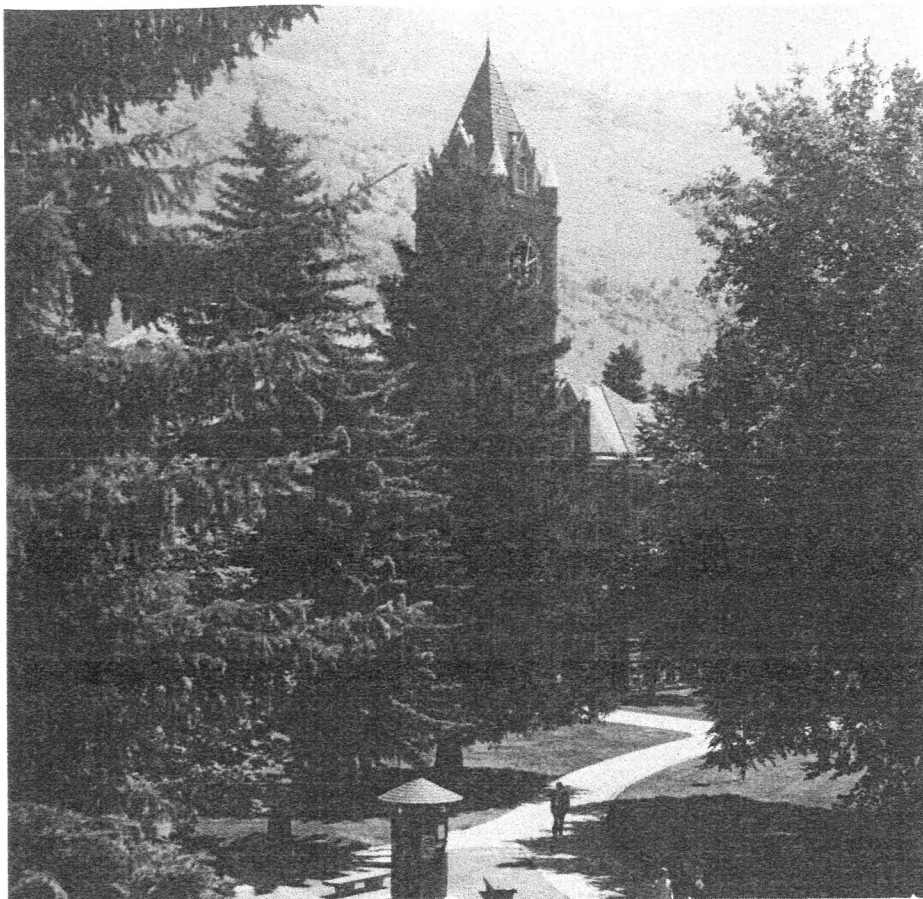
FOOTBALL COACHES

Head Coach	Jack Swarthout (Ext. 5331)
1st Assistant (Defensive Secondary)	Jack Elway, (5331)
Assistant (Defensive Interior Line)	Charley Armey (5331)
Assistant (Offensive Interior Line)	Bill Betcher (5331)
Assistant (Ends, Linebackers)	Ron Nord (5331)

OTHER ATHLETIC PERSONNEL

Athletic Director	Jack Swarthout (5331)
Faculty Representative	Dr. Earl Lory (4022)
Business Manager	Earl Martell (4051)
Ticket Manager	Gary Hughes (4051)
Team Physician	Dr. Robert Curry (2122)
Athletic Trainer	Naseby Rhinehart (2652)
Equipment Manager	Rupert Holland (4351)
Athletic Secretary	Mrs. Cela Burham (5331)
Track, Cross Country Coach	Harley Lewis (5331)
Head Basketball Coach	Lou Rocheleau (5331)
Assistant Basketball Coach	Jim Brandenburg (5331)
Swimming Coach	Fred Stetson (5331 or 2763)
Golf Coach	Ron Nord (5331)
Sports Information Director	Don Brunell (2522)

Main Hall



University of Montana, Missoula

Location—Western Montana 100 miles from western border and 200 miles east of Spokane, Wash. 115 miles west of Butte, Mont. and 120 miles north of southern state border. 100 miles south of Glacier National Park. On U.S. Highway 10 and Interstate 91.

Enrollment—8,700 (fall estimate)

President—Robert T. Pantzer

School Colors—Copper, Silver and Gold

Nickname—Grizzlies, Tips, Freshmen Cubs

Athletic Facilities—Dornblaser Stadium (11,500) and Harry Adams Field House (6,500)

Conference—Big Sky Athletic Conference

College of Arts and Sciences plus seven professional schools (business administration, education, fine arts, forestry, journalism, law and pharmacy).

Chartered—Feb. 17, 1893 by Third Legislative Assembly of Montana

Faculty—More than 400 full-time instructional staff members (better than 50 per cent Ph.D.'s)

Campus—201-acre main campus located at base of Mt. Sentinel with more than 40 buildings; 154-acre family housing complex and nine-hole golf course south of campus; 296 acres of research facilities at Fort Missoula south and west of main campus; 624 acres on Mt. Sentinel; 27,000-acre experimental forest 35 miles east of main campus and 168-acre biological experiment station on Flathead Lake 90 miles north of campus.

Transportation Services—Northwest and Frontier Airlines; Burlington-Northern Railway and Greyhound and Intermountain Bus Lines.

For further information about the University of Montana, Missoula, write:

Information Services
University of Montana
Missoula, Montana 59801



President Pantzer greeting Camellia Bowl hostess committee at Sacramento Airport.

President Robert T. Pantzer

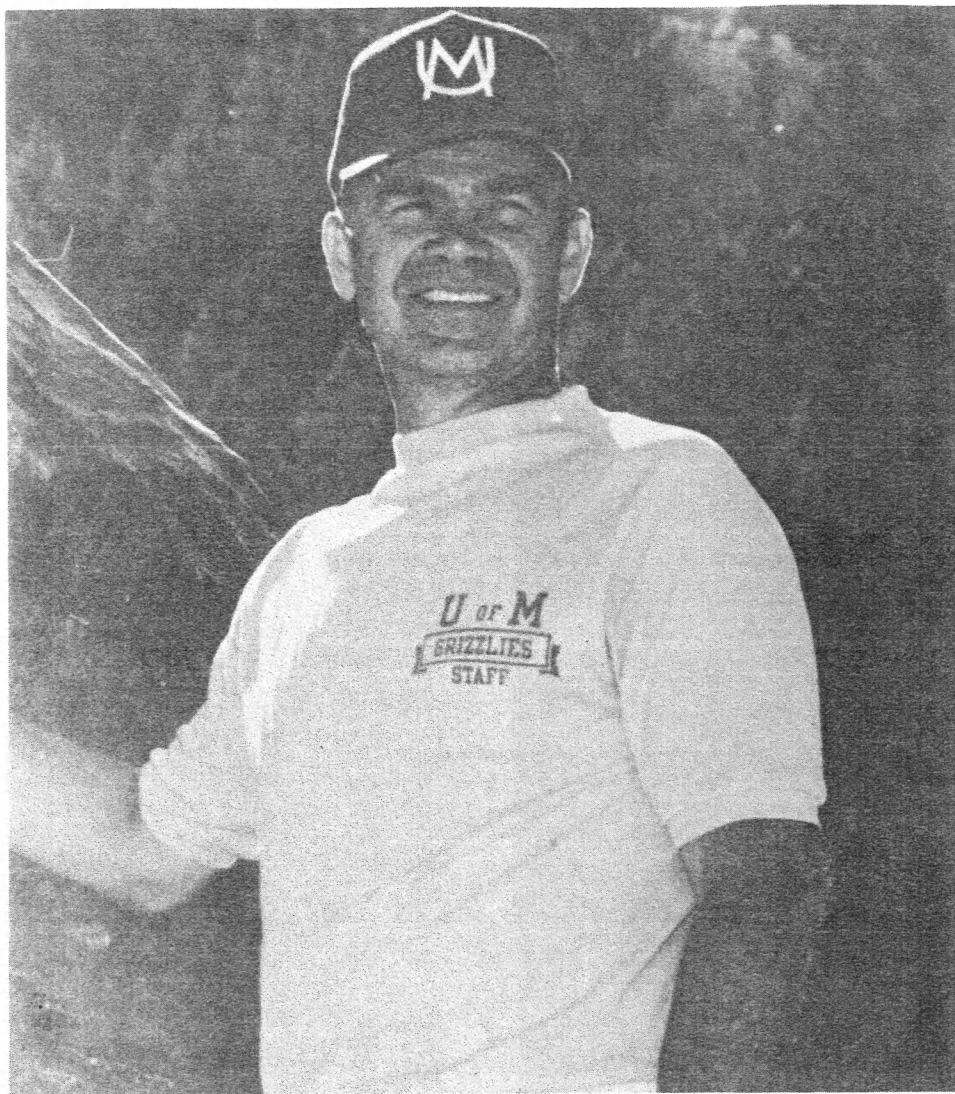
Robert T. Pantzer was appointed President of the University of Montana on December 16, 1966 after serving five months as UM acting president. He was the financial vice-president under President Robert Johns and is a professor of business administration. Pantzer has been with the University since 1957.

He received his B.A. in business administration from the University of Montana in 1940 and served 42 months overseas during World War II. Pantzer was discharged as a United States Army Major and was awarded the bronze star for meritorious service in the East Indies.

Pantzer returned to his alma mater and graduated from the University of Montana Law School in 1947. He served as county attorney at Chester, Montana from 1947-50 and practiced law in Livingston before returning to the Missoula university.

One of the first important steps Pantzer took as president was to revitalize the UM athletic program. He appointed Jack Swarhout as head football coach and athletic director only a few short weeks after assuming his duties as president.

President Pantzer and his wife Ann have three children.



Big Sky Coach of the Year

Jack Swarthout became the University of Montana athletic director and head football coach in 1967 and already has achieved something no other coach has achieved in the 73-year history of the sport at this school. He is the first man to guide a UM grid team to more than seven wins in a season; the first man to coach an undefeated Montana football team and conference championship squad; the first man to take a Grizzly team to a bowl game and the first man to coach a Montana team to a national ranking—Number 2 in AP and UPI College Division Polls (final). For this Swarthout was awarded the 1969 AP and UPI Big Sky Coach of the Year and received the 1969 Ray Rocene Award presented to the outstanding Missoula sportsman each year. The UM coach was also a finalist in the Inland Empire Coach of the Year and Montana Sportswriters' Sportsman of the Year Awards. In 1967 Swarthout received the Big Sky Coach of the Year Award from United Press International. Swarthout's three-year record at Montana is 19-10.

Swarthout was born in Prosser, Washington on February 23, 1920 and was a football, basketball and baseball letterman in high school. He attended the University of Montana and competed for the Grizzly athletic teams. Swarthout was a student of U.S. Senate Majority Leader Mike Mansfield and received his B.A. degree in political science in 1942. He served four years in the armed services as a lieutenant in the airborne infantry.

The UM mentor coached at Hoquiam High School in Washington and then served three years as an assistant coach to Darrell Royal at the universities of Washington and Texas. Swarthout coached at Olympia High School and compiled a 50-14-2 record in seven seasons.

He is married and has four children.



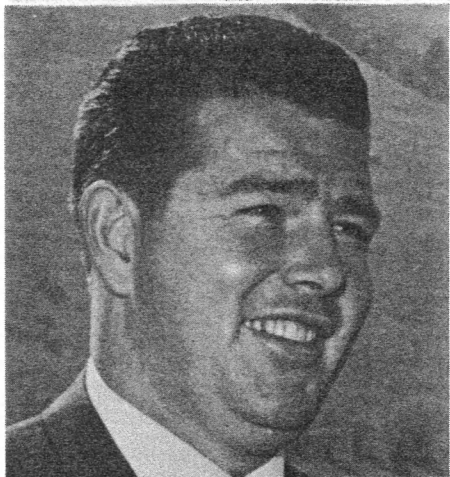
COACH JACK ELWAY

Jack Elway came to the University of Montana in February 1967 as Coach Swarthout's first assistant. He was head coach at Grays Harbor College in Aberdeen, Wash. where he compiled a 32-17-2 record over a six-year span. Prior to coaching football at GHC, Elway was head football coach at Port Angeles High School in western Washington. His record at Port Angeles was 39-12. He also was a prep basketball and baseball mentor.

Elway was born in Hoquiam, Wash., in 1931 and earned six letters in that city's high school. He attended Washington State University, Pullman, and graduated in 1953 with a B.S. in physical education. In 1965 he earned his M.S. in physical education from WSU. His collegiate athletic career was halted after his freshman year by injuries.

He is married and the father of three children.

Elway also coaches the defensive secondary.



COACH BILL BETCHER

Bill Betcher joined the UM football staff as offensive interior line coach in July 1967 after four years as line coach for Central Washington State College, Ellensburg. He was also the head grid mentor at Castle Rock High School in southwestern Washington for four years and chalked up a 22-5 record.

Betcher was born in Woodland, Wash., and lettered in football, basketball, baseball and track at Washougal High School in Washington. He lettered in freshman football at the University of Oregon, Eugene, and transferred to Central Washington State College. At CWSC Betcher lettered twice in football and was selected to the Little All-American team in 1961.

He is married and the father of four children.



COACH RON NORD

Ron Nord joined the UM football staff in March 1968 after six years as Grizzly head basketball coach. He is the end and linebacker coach. Nord also coached football at Beaver Dam and Oshkosh high schools in Wisconsin. He was a scout and recruiter while serving three years as assistant basketball coach at the University of Wisconsin, Madison.

Nord was born in Minneapolis, Minn., in 1926 and lettered in football, basketball and baseball at South High School in Minneapolis. He lettered in basketball and baseball at the University of Wisconsin and graduated from UW in 1950 with a physical education degree. He served in the U.S. Air Force from 1944-46 and worked on the atomic bomb project.

He is married and the father of five children. His son Jeff is a UM honors student and member of the UM varsity basketball squad.



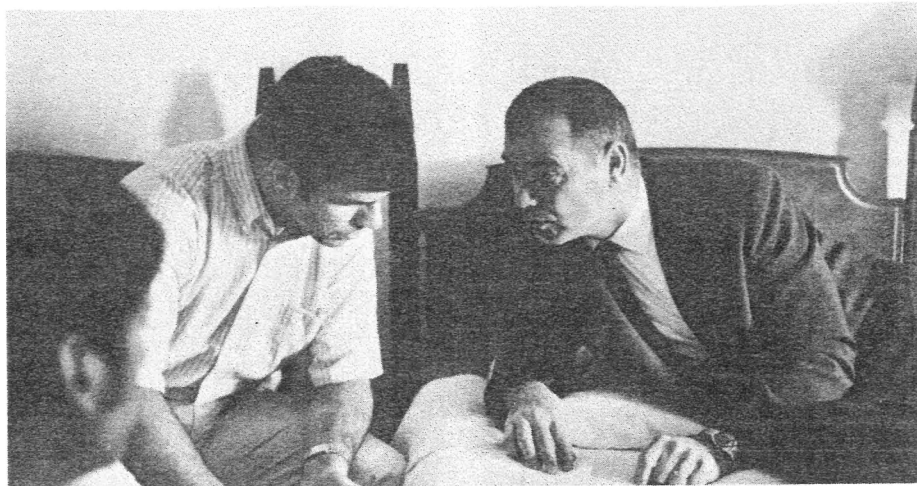
COACH CHARLEY ARMEY

Charley Arme joined the Grizzly football staff in February 1970 after an outstanding one-year college coaching record at Montana Tech, (4-3-1). Arme was also an assistant coach at North Dakota State University, Fargo. He coached football at Graceville and Breckenridge high schools in Minnesota and compiled an 11-5-2 marking. He is the defensive line coach.

Arme was born in Cando, N.D., in 1939 and lettered in football, basketball and baseball at that city's high school. He attended Valley City State College, Valley City, N.D., and lettered three years in football. Arme graduated from VCSC in 1966 and earned his M.S. from North Dakota State University in 1969. He served four years in the U.S. Navy.

He is married and the father of two children.

Coach Swarthout discusses the game plan with his quarterbacks Ray Brum and Steve Caputo.



1970 Grizzly Outlook

The University of Montana must replace seven key starters in 1970 to have a successful season. Gone from the 1969 undefeated team are starters Doug Bain, split receiver; Ray Brum, quarterback; Tuufuli Uperesa, tackle; Bill Gutman, tackle; John Stedham, guard; Roy Robinson, cornerback and John Talalotu, defensive end. Uperesa was twice an All-Big Sky and All-American candidate and Brum made the All-American team last season. Robinson, Stedham and Gutman also were All-Big Sky choices.

The strong point for the Grizzlies this fall should be the defense. Nine of the eleven starters are back including five All-Big Sky first teamers (Jim Nordstrom, end; Larry Miller and Larry Stranahan, tackles; Tim Gallagher, linebacker and Karl Stein, free safety). Stein and Miller were All-Americans. Other returning starters are linebackers Bill Hickerson, Marty Frustaci and Bill Sterns and defensive backs Pat Schruth and John Waxham.

Montana has some added strength on defense with transfers Greg Maloney, end; linebackers Bruce Spencer and Bob Serowik, and defensive backs Lonzie Jackson and Dean Dempsey. The Grizzlies will get added strength from the 1969 frosh team in defensive end Dennis Falk; linebackers Curt Henningsen, Terry Pugh and Jim Richter and defensive backs Yasuo Yorita and David Leigh.

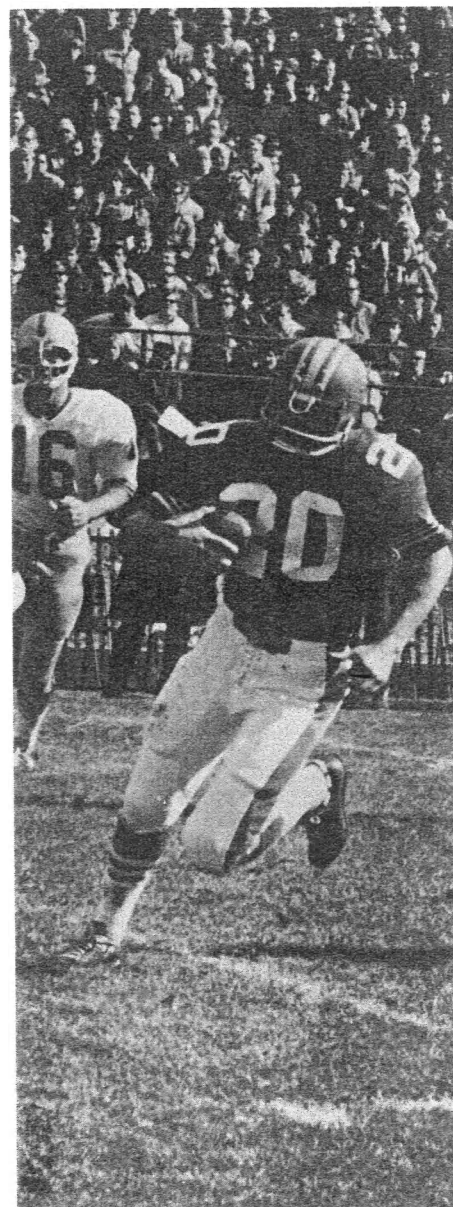
One of the several big questions in 1970 is the quarterback spot. Montana has transfer Gary Berding, who guided Central Iowa to the Wool Bowl victory last fall, sophomore Elroy Chong and junior Steve Caputo vying for the starting berth. Ray Brum graduated and will not be easy to replace.

Another big question for Montana is the offensive line. Only two Grizzly starters are back this fall, guard Willie Postler and center Ray Stachnik. Swarthout has 1969 utility lineman Len Johnson; transfers Greg Semple, John Lugviel, Barry Darrow and Steve Okoniewski, and frosh stars Ron Richards and Jim Leid to fill the gaps.

The Tip backfield should be as strong as it was last fall. All-Big Sky halfback Arnie Blancas, All-American fullback Les Kent and 1969 starter halfback Casey Reilly are back. Transfer Wally Gaskins, veteran Jim Schillinger and sophomores Monte Sever and Sparky Kottke add depth to pack the mail.

Montana has a host of fine receivers in split ends Tom McMahon and Glen Welch and tight ends Jim DeBord, Tom Bodwell and Dean Hovdey. DeBord was a starter last fall and McMahon shared starting time with Doug Bain.

The Grizzly kicking combination is back. Kicker Dan Worrell has his holder Bob Guptill back this year. Guptill started as a defensive halfback in 1968 and left school last fall. Guptill could also earn his starting role back in the secondary but is a sure bet to hold for Worrell, Montana's All-American kicker.



Mike Buzzard (20) on his way for six . . .

Victory celebration after 58-0, UM vs. South Dakota State.



by Bill Schwanke
Missoulian Sports Editor

10-0—It Happened Like This

1-0

MONTANA-NORTH DAKOTA

GRAND FORKS, N.D. (Sept. 14)—The Montana Grizzlies scored consecutive touchdowns in the last 20 minutes of play Saturday to pick up a 24-10 season-opening win over the North Dakota Sioux.

North Dakota's Frank Gelling gave his team a 3-0 first quarter lead with a 47-yard field goal, but Montana's Dan Worrell knotted the score at the half with a 35-yarder with 24 seconds left.

Montana took the lead for the first time in the third quarter with a three-yard right end sweep by halfback Arnie Blancas that followed a North Dakota fumble on the second play of the quarter.

The Sioux tied it 10-10 with a 21-yard pass from Mike Connors to Don Sessions, but the Grizzlies came back four minutes later on a one-yard plunge by quarterback Ray Brum, the game's Most Valuable Player.

Halfback Mike Buzzard gave the Grizzlies their final tally on a five-yard run with 10:41 left in the contest. Montana penetrated to the Sioux 20 late in the game, but couldn't score.

Blancas led Grizzly rushing with 75 yards, followed by Kent with 74, fullback Jeff Hoffmann with 67 and Brum with 62. Brum hit four of 10 passes. Interceptions were by Karl Stein, Tim Gallagher and Robin Peters.

Score by quarters:

NORTH DAKOTA	3	0	7	0-10
MONTANA	0	3	14	7-24

	UM	ND
First downs	20	10
Rushing yardage	345	35
Passing yardage	51	111
Return yardage	30	44
Passes	4-10-1	11-34-3
Punts	6-37.8	7-40.6
Fumbles lost	5	1
Yards penalized	93	23

2-0

MONTANA-SOUTH DAKOTA

GREAT FALLS (Sept. 21)—Quarterback Ray Brum tossed touchdown passes of 26 and 71 yards and ran 65 yards for another as the Montana Grizzlies bounced the University of South Dakota 31-20 and avenged the humiliating 21-0 defeat of 1968 at the hands of the Coyotes.

Brum's 26-yarder to Doug Bain gave Montana a 7-0 lead late in the first period, but South Dakota's Jim Foster hit fullback Bob Pelot for 34 yards to tie the tilt in the second quarter.

Montana took a lead it never lost when Dan Worrell booted a 37-yard field goal and Brum broke for his long TD run on a quarterback sneak. Trailing 17-7, Foster hit Pelot with a seven-yard aerial to bring the halftime score to 17-14.

Brum hooked up with end Jim DeBord with the 71-yarder early in the fourth quarter after a scoreless third stanza. Dan Hankins' one-yard plunge brought the Coyotes back to trail only 24-20.

Casey Reilly's two-yard end run gave the Grizzlies their final touchdown.

Grizzly rushing was led by Arnie Blancas with 98 yards and Brum with 84. Brum hit four of 11 passes for 138 yards, with DeBord catching 2 for 75 yards. Karl Stein got his second interception of the season, and Pat Schruth got his first.

Score by quarters:

SOUTH DAKOTA	0	14	0	6-20
MONTANA	7	10	0	14-31

	UM	SD
First downs	21	10
Rushing yardage	337	91
Passing yardage	138	125
Passes	4-13-1	11-29-2
Punts	7-36.3	10-39.9
Fumbles lost	1	2
Yards penalized	90	70

Montana's All-American fullback, Les Kent (40) is hard to bring down.

Offensive co-captains Tuufuli Uperesa and Ray Brum accept Centennial Game Award from Bill McKenzie of the Missoula Mavericks.



3-0

MONTANA-NORTHERN ARIZONA

MISSOULA (Sept. 28) — Montana's crashing front four combined with safety Karl Stein, who intercepted three passes, and an explosive offense to smash surprised Northern Arizona University 52-7 in the Grizzlies' home opener.

With less than two minutes left in the first period, the Grizzlies scored on a Ray Brum to Casey Reilly pass for 23 yards that broke things open for the rest of the afternoon.

UM tallied three more times in the second quarter on a seven-yard run by Reilly, a 47-yard pass from Brum to Mike Buzzard and a 35-yard field goal by Dan Worrell.

In the third quarter, Buzzard zipped 12 yards and Reilly swept one for two more UM touchdowns. Fullback Les Kent rambled 58 yards for six and reserve fullback Steve Caputo went 24 for another score in the fourth quarter. NAU scored on an 87-yard pass from Bill Beckenhauer to Bob Brown.

Kent topped the century mark for the first time, picking up 142 yards on 14 carries. Brum hit 7 of 14 passes for 181 yards, with Doug Bain catching 3 for 88 yards.

Score by quarters:

NORTHERN ARIZONA	0	0	0	7-7
MONTANA	7	17	14	14-52

	UM	NA
First downs	21	14
Rushing yardage	287	33
Passing yardage	224	231
Passes	9-17-0	19-35-3
Punts	6-49.2	8-31.2
Fumbles lost	2	2
Yards penalized	85	53

4-0

MONTANA-WEBER STATE

OGDEN, Utah (Oct. 4)—Dan Worrell's two field goals saved the day as the Montana Grizzlies built a 17-3 halftime lead and fought off a desperate Weber State rally to nip the Wildcats 20-17 for their fourth win without a loss and first league win of 1969 Saturday night.

Worrell's 30-yarder less than three minutes into the game gave Montana a 3-0 lead after a Wildcat fumble at the Weber 20. With just more than three minutes left, Les Kent capped a 38-yard drive with a two-yard plunge for six points.

Montana went ahead 17-0 on a nine-yard pass from Ray Brum to Jim DeBord early in the second quarter. Weber State tallied on a 28-yard field goal by Jamie Nunez.

Weber State trailed by only seven after Sam Gipson ran 26 yards to paydirt. Worrell's second field goal, a 30-yarder that gave Montana its victory margin, came with 23 seconds on the clock in the third quarter.

Quarterback Bob Quarry hit end Luther White with a five-yard touchdown pass to make the score 20-17, Montana. Nunez missed a 53-yard field goal on the last play of the game for the Wildcats.

Kent led Montana rushing with 111 yards, followed by Arnie Blancas with 78. Brum hit 7 of 17 passes for 79 yards, with DeBord grabbing three and Blancas and Casey Reilly two each.

Score by quarters:

MONTANA	10	7	3	0-20
WEBER STATE	0	3	7	7-17

	UM	WS
First downs	17	16
Rushing yardage	270	184
Passing yardage	79	77
Passes	7-17-0	8-15-0
Punts	7-38.7	8-42.8
Fumbles lost	1	2
Yards penalized	139	121

5-0

MONTANA-IDAHO

MISSOULA (Oct. 11)—Montana's offense rolled for 557 total yards, 443 on the ground, while the defense held Idaho to 334 and intercepted four passes as the Grizzlies won their fifth game without a loss by beating the Vandals 34-9 Saturday.

Idaho never crossed the goal line, relying on three field goals of 31, 38 and 27 yards by Rich Castillo. His 31-yarder gave the Vandals their only lead in the second quarter with 9:35 left. Mike Buzzard's 14-yard scamper capped a four-play drive of 71 yards less than two minutes later and Montana led 7-3. Castillo connected again moments later, but Montana roared back to score on a three-yard run by Buzzard for a 13-6 lead at the half.

After a scoreless third period, the Vandals got their final field goal with nine minutes left in the game. Montana blitzed with a 13-yard pass from Ray Brum to Tom McMahon, a six-yard run by Brum, and a 22-yard pass from reserve Bob Fisher to McMahon.

Montana got fine rushing performances from Brum with 95 yards, Les Kent with 89, Casey Reilly with 79, Arnie Blancas with 72 and Buzzard with 52. Brum's passing was 8 for 18 for 102 yards, with Doug Bain catching four for 60 yards. Karl Stein and Pat Schrueth got two interceptions apiece.

Score by quarters:

MONTANA	0	13	0	21-34
IDAHO	0	6	0	3-9

	UM	UI
First downs	29	21
Rushing yardage	433	127
Passing yardage	124	207
Passes	9-19-0	20-46-4
Punts	4-24.5	5-38.8
Fumbles lost	4	0
Yards penalized	125	90

6-0

MONTANA-IDAHO STATE

MISSOULA (Oct. 18)—The University of Montana overcame a 478-yard effort by Idaho State quarterback Jerry Dunne and had two players, Les Kent and Arnie Blancas, run for more than 100 yards apiece Saturday as the Grizzlies beat the Bengals 46-36 and clinched at least a tie for the Big Sky Conference title.

In the first quarter, Montana took a 7-0 lead on a 72-yard run by Blancas only to have a Dunne to Ed Bell pass for 28 yards knot the score. The Grizzlies tallied on a 10-yard run by Ray Brum to lead 14-7 at the first quarter gun.

Touchdowns in the second quarter by Tyrone Watley on a two-yard run and Bell on a six-yard pass from Dunne gave the Bengals a 22-14 lead. Les Kent brought Montana within two at 22-20 with a 26-yard run, punter John Ochoa faked and passed to Jim DeBord for a 54-yard scoring play, and reserve Bob Fisher, subbing for the injured Brum, hit Blancas for 59 yards to put Montana ahead 36-22 at the half.

Both teams scored in the third, Montana on a 49-yard pass from Fisher to Doug Bain and ISU on a one-yard run by Joe Clark to make it 43-30 with one period remaining.

Dan Worrell booted a 31-yard field goal for Montana and Dunne went around left end for 11 yards and six points in the fourth quarter.

Blancas wound up with 152 yards rushing and Kent 127, while Fisher hit 4 of 8 passes for 115 yards. Bain and Blancas caught two passes apiece, and

Pre-game words of inspiration . . .



Karl Stein got his eighth interception of the season for a school record.
Score by quarters:

IDAHO STATE	7	15	8	6-36
MONTANA	14	22	7	3-46
				UM IS
First downs		22		30
Rushing yardage		342		156
Passing yardage		207		385
Passes	6-12-1		30-61-1	
Punts	6-36.6		7-41.7	
Fumbles lost		3		0
Yards penalized		149		57

7-0

MONTANA-PORTLAND STATE

PORTLAND, Ore. (Oct. 25) — The Montana Grizzlies, led by Les Kent's school record 227 yards rushing accumulated in only three quarters, clouted the Portland State Vikings 49-14 on artificial turf Saturday afternoon.

Montana opened first-period scoring with a 15-yard touchdown pass from Ray Brum to Doug Bain, followed by a one-yard touchdown run by Portland State's Rich Lewis.

In the second quarter, Portland State stunned the Grizzlies by taking a 14-7 lead on a 9-yard touchdown pass from Tim Von Dulm to Randy Nelson. But Montana burst forth with three second-quarter touchdowns on a 5-yard run by Casey Reilly, a 6-yard sweep by Mike Buzzard, and a 3-yard run by Buzzard. An interception and a PSU fumble set up the last two TD's of the second quarter, which ended 28-14.

Montana got two more late in the third period on a 21-yard end sweep by Buzzard and a 7-yard pass from Brum to Bain. In the final quarter, reserve fullback Jeff Hoffmann busted one yard for a touchdown.

Kent got rushing help from Buzzard, who got 93 yards. Brum connected on 5 of 12 passes for 53 yards, and Karl Stein, Tim Gallagher, Tony Bozzo and Roy Robinson picked off one pass apiece during Von Dulm's 61-pass barrage.

Score by quarters:

PORTLAND STATE	7	7	0	0-14
MONTANA	7	21	14	7-49
				UM PS
First downs		22		17
Rushing yardage		408		3
Passing yardage		53		226
Passes	5-15-2		23-61-4	
Punts	7-37.2		8-38.5	
Fumbles lost		0		2
Yards penalized		118		16

8-0

MONTANA-MONTANA STATE

BOZEMAN (Nov. 1)—Montana State's Bobcats missed a big chance to upset the Montana applecart Saturday when Frank Kalfoss went wide right with a 42-yard field goal attempt with seconds left and the Grizzlies held on for a 7-6 victory and undisputed first place in the Big Sky Conference.

Montana got a taste of things to come when Arnie Blancas raced 42 yards on the Grizzlies' second play only to lose a fumble at the Bobcat 15. Momentum went to Montana State, which took a 3-0 first period lead on a 39-yard field goal by Kalfoss.

The Grizzlies came back for a 7-3 halftime edge when Ray Brum scrambled from Bobcat pursuit and hit Blancas with a 49-yard pass play. Dan Worrell added the ever-important PAT kick.

Kalfoss got Montana State's final points with 11:49 left in the third quarter. That set the stage for the final try which failed. Montana State lost one sure touchdown when fullback Gary Hughes fumbled going into the end zone.

Score by quarters:

MONTANA	0	7	0	0-7
MONTANA STATE	3	0	3	0-6
				UM MS
First downs		10		15
Rushing yardage		167		229
Passing yardage		82		39
Passes	5-10-1		4-15-1	
Punts	7-37.0		6-37.0	
Fumbles lost		1		1
Yards penalized		70		30

9-0

MONTANA-CAL POLY, SLO

MISSOULA (Nov. 8)—The Montana Grizzlies, still showing some of the offensive letdown they had against Montana State last week, relied on tough defense to beat previously high scoring Cal Poly-San Luis Obispo 14-0 Saturday for their ninth win without a loss this season.

All of Montana's points came in the final four minutes of the second quarter. Fullback Jeff Hoffmann, the game's leading rusher, went over from the Cal Poly four with 3:48 left in the half, and Ray Brum connected with end Tom McMahon for a 51-yard scoring pass with 29 seconds left.

Score by quarters:

CAL POLY	0	0	0	0-0
MONTANA	0	14	0	0-14
				UM CP
First downs		18		16
Rushing yardage		251		133
Passing yardage		124		150
Passes	5-16-1		11-24-1	
Punts	8-37.3		6-37.2	
Fumbles lost		0		0
Yards penalized		76		57

10-0

MONTANA-SOUTH DAKOTA STATE

MISSOULA (Nov. 15) — Montana's keyed up offense overcame a two-week case of the blahs and combined with the ever-ready Grizzly defense to give the Silvertips a 58-0 win over South Dakota State for a 10-0 record, the school's first perfect season in history.

Scoring opened on the fifth play of the game when Ray Brum kept for 24 yards, then pitched to Arnie Blancas who went the final 42 for the score. The Grizzlies followed that up with a 75-yard pass from Brum to Doug Bain.

Two field goals by Dan Worrell, one of 26 yards and the other of a record-breaking 50, and touchdowns by Casey Reilly on an 11-yard run and Jeff Hoffmann on a 12-yard ramble, gave Montana a 34-0 halftime lead.

In the third quarter, Montana raced to a 51-0 margin with Reilly sweeping eight for a TD, Hoffmann bulling seven for a score, and Worrell kicking a record third field goal of 47 yards.

Montana's final TD, in the fourth quarter, came when Les Kent, who set several individual rushing records, broke loose for a 35-yard touchdown scamper.

Hoffmann again led Montana rushing with 105 yards, aided by Kent with 72, Arnie Blancas with 66 before he was injured in the second quarter, and reserve John Ochoa with 65. Karl Stein's 11th interception set a new conference record.

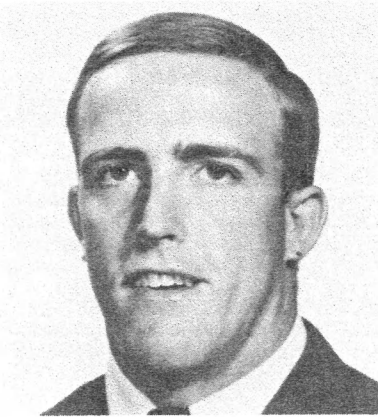
Score by quarters:

SOUTH DAKOTA STATE	0	0	0	0-0
MONTANA	14	20	17	7-58
				UM SDS
First downs		25		12
Rushing yardage		460		144
Passing yardage		151		134
Passes	7-19-1		15-40-4	
Punts	3-31.7		9-34.1	
Fumbles lost		1		3
Yards penalized		92		96

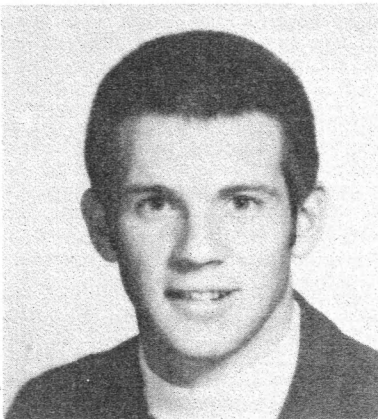
The Tip Lineup

Name	Pos.	Ht.	Wt.	Class	Hometown
Antonovich, Andy	DE	6-2	235	Soph.	Butte, Mont.
Barrett, Randy	C	6-2	215	Soph.	Elm Grove, Wisc.
*Blancas, Arnie	HB	6-0	210	Sr.	Sumner, Wash.
Berding, Gary	QB	5-10	180	Jr.	Cincinnati, Ohio
Bodwell, Tom	TE	6-4	210	Jr.	Ocosta, Wash.
*Bozzo, Tony	LB	6-0	210	Sr.	Salinas, Calif.
*Caputo, Steve	QB	6-1	195	Jr.	Seattle, Wash.
Chong, Elroy	QB	6-0	185	Soph.	Honolulu, Haw.
Darrow, Barry	OG	6-5	250	Soph.	Great Falls, Mont.
*DeBord, Jim	TE	6-2	200	Sr.	Pasco, Wash.
Dempsey, Dean	DB	5-10	170	Jr.	Norwalk, Calif.
*Dennehy, Mick	FS	5-10	175	Jr.	Butte, Mont.
*Dolan, Pat	DB	5-10	175	Sr.	Great Falls, Mont.
Falk, Dennis	DE	6-3	190	Soph.	Hamilton, Mont.
Fraser, Steve	LB	6-0	190	Soph.	Aberdeen, Wash.
*Frustaci, Marty	OG	5-11	210	Sr.	Los Angeles, Calif.
Gaskins, Wally	FB	5-9	215	Jr.	Spokane, Wash.
*Gallagher, Tim	LB	6-2	220	Sr.	Kalispell, Mont.
*Guptill, Bob	DB	5-11	180	Jr.	Great Falls, Mont.
Henningsen, Curt	LB	6-1	210	Soph.	Renton, Wash.
*Hickerson, Bill	LB	6-1	230	Sr.	San Francisco, Calif.
Hovdey, Dean	TE	6-2	205	Soph.	Missoula, Mont.
Jackson, Lonzie	DB	5-11	180	Jr.	Oakland, Calif.
*Johnson, Len	OT	6-0	215	Sr.	Sacramento, Calif.
*Kent, Les	FB	5-10	200	Sr.	Honolulu, Haw.
Kottke, Warren	HB	5-8	180	Soph.	Great Falls, Mont.
Kouzmanoff, Marc	DE	6-1	205	Soph.	Glen Ellyn, Ill.
Leid, Jim	OG	6-0	225	Soph.	Waitsburg, Wash.
Leigh, David	DB	5-11	180	Soph.	Seattle, Wash.
Lewis, Lonzo	DT	6-6	240	Jr.	Rockford, Ill.
Lugviel, John	OG	6-3	240	Jr.	Longview, Wash.
Maloney, Greg	DE	6-3	240	Jr.	Macon, Mo.
*McMahon, Tom	SE	6-0	180	Sr.	Tustin, Calif.
*Miller, Larry	DT	5-9	240	Sr.	Martinez, Calif.
*Nordstrom, Jim	DE	6-2	220	Sr.	Vancouver, Wash.
Okoniewski, Steve	OT	6-3	235	Jr.	Bremerton, Wash.
*Peters, Robin	DB	6-0	180	Jr.	Cleveland, Ohio
*Postler, Willie	OG	6-5	230	Jr.	Vancouver, B.C.
Pugh, Terry	LB	6-0	200	Soph.	Kalispell, Mont.
*Reilly, Casey	HB	5-10	190	Jr.	Anaconda, Mont.
Richards, Ron	OG	6-3	230	Soph.	Butte, Mont.
Richter, Jim	LB	5-11	210	Soph.	Newport, Wash.
*Schillinger, Jim	HB	6-2	180	Jr.	Vida, Mont.
*Schruth, Pat	DB	6-0	185	Sr.	Billings, Mont.
Semple, Greg	C	6-2	220	Jr.	Seattle, Wash.
Serowik, Bob	LB	6-1	200	Jr.	Huntington Beach, Calif.
Sever, Monte	FB	6-0	220	Soph.	Butte, Mont.
Spencer, Bruce	LB	6-1	210	Jr.	Hoquiam, Wash.
*Stachnik, Ray	C	6-3	235	Jr.	Chicago, Illinois
*Stein, Karl	FS	6-0	180	Sr.	San Anselma, Calif.
*Sterns, Bill	LB	6-0	205	Jr.	Stevenson, Wash.
*Stranahan, Larry	DT	6-0	220	Sr.	Missoula, Mont.
*Waxham, John	LB-DB	6-0	190	Sr.	Seattle, Wash.
Welch, Glen	SE	5-10	175	Soph.	Butte, Mont.
*Worrell, Dan	K	5-11	180	Sr.	Great Falls, Mont.
Yorita, Yasuo	SE-DB	5-10	170	Soph.	Honolulu, Haw.
*Lettermen					

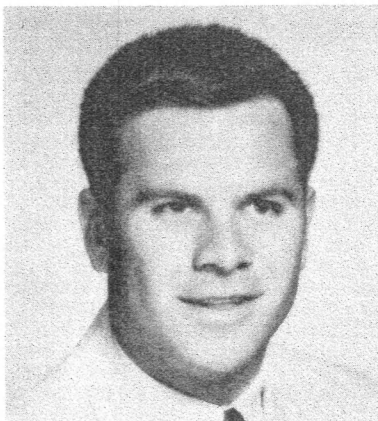
Player Profiles



Jim DeBord



Tom McMahon



Len Johnson

ANTONOVICH, Andy 6-2 225 lbs. Soph. Butte, Mont.—Redshirt last fall and moved to defensive end. Good size for position and speed. All-Central Division Class A Butte Central. East-West Shrine game. **EDUCATION MAJOR.**

BODWELL, Tom 6-4 210 lbs. Jr. Ocosta, Wash.—Standout basketball and football player at Grays Harbor J.C., Aberdeen, Wash. Honors student—better than a 3.0 average. Had a fine spring practice and is vying for starting berth. **EDUCATION MAJOR.**

DeBORD, Jim 6-2 205 lbs. Sr. Pasco, Wash.—1969 starter at tight end. Second leading receiver—11 for 268 yds.—24.4-yard average per catch—3 TDs. Longest TD reception record holder (UM record 76 yds. 1968). Good blocker, hustle and great desire. All-conference at Pasco High School. **BUSINESS MAJOR.**

FALK, Dennis 6-3 190 lbs. Soph. Hamilton, Mont.—One of the biggest surprises on the freshman team. A real hitter and could earn a starting spot in the future. Great desire and attitude. **GENERAL MAJOR.**

HOVDEY, Dean 6-2 205 lbs. Soph. Missoula, Mont.—All Class AA 1968 at Sentinel High School. Surprised UM coaching staff with ruggedness and hard work. Could develop into a good one and add to the passing game. Good hands. **GENERAL MAJOR.**

KOUZMANOFF, Marc 6-1 205 lbs. Soph. Glen Ellyn, Ill.—Had an unusual spring. Started at tight end and then switched to defensive end. Coming on strong. **WILDLIFE MAJOR.**

MALONEY, Greg 6-3 240 lbs. Jr. Macon, Mo.—A transfer from Grays Harbor J.C. All the attributes of a great lineman. Can play either defensive tackle or end. Had a great spring. Hard to keep out of the starting lineup. Honors student. **BUSINESS MAJOR.**

McMAHON, Tom 6-0 190 lbs. Sr. Tustin, Calif.—Transferred from Golden West J.C. in spring of 1969 and shared the split end spot with Doug Bain last season. Great attitude and ability. Caught 8 for 147 yds. and 18.3 yard per catch average. Hauled in three TD passes. Should start in 1970. **PHYSICAL EDUCATION MAJOR.**

NORDSTROM, Jim 6-3 215 lbs. Sr. Vancouver, Wash.—1969 All-Big Sky first team. Transferred from University of Washington and Columbia Basin J.C., Pasco, Wash. Outstanding performer—tough, quick and dependable. Knocked down nine passes in crucial games four through six. **BUSINESS MAJOR.**

WELCH, Glen 5-10 175 lbs. Soph. Butte, Mont.—Three time all-stater at Butte Public. Great speed (better than 9.9 in the 100) and a tough player. Could develop into one of the top punt and kickoff return specialists in the Northwest. Great quickness. **GENERAL MAJOR.**

YORITA, Yasuo 5-10 170 lbs. Soph. Honolulu, Hawaii—Could start as defensive back or split receiver—might go both ways. Smart player with all the attributes. **PHYSICAL EDUCATION MAJOR.**

JOHNSON, Len 6-0 215 lbs. Sr. Sacramento, Calif.—Transferred from American Rivers J.C., California, and became Mr. Utilityman for the Tips. Can play any lineman's position. Great speed and hitting ability. Hard to keep out of starting role. **PHYSICAL EDUCATION MAJOR.**

LEWIS, Lonzo 6-6 240 lbs. Jr. Rockford, Ill.—Basketballer that decided to give football a try. Could be a great one. Good speed and range and great on pass defense. Real willingness to work. Strong. **EDUCATION MAJOR.**

MILLER, Larry 5-11 240 lbs. Sr. Martinez, Calif.—1969 All-American third team. All-Big Sky first team. Big Sky heavyweight wrestling champion pinning 10 of 12 opponents. Great all-around player—quick, smart, fast and an excellent hitter. Grays Harbor Athlete of the Year 1968, National A.A.U. heavyweight wrestling champ as prep senior. Grays Harbor student body vice-president. Transferred in 1969. **PHYSICAL EDUCATION MAJOR.**

OKONIEWSKI, Steve 6-3 235 lbs. Jr. Bremerton, Wash.—Transferred from Everett J.C., Everett, Wash. Fastest interior lineman on the offensive team. Fine knowledge of football with all the qualities to be an All-American. Honors student. **BUSINESS ADMINISTRATION MAJOR.**



Robin Peters



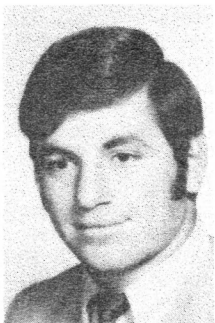
Casey Reilly



Pat Dolan



Mick Dennehy

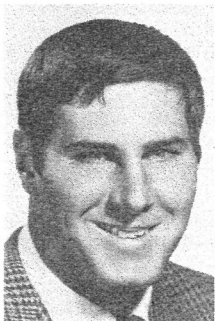


Marty Frustaci

STRANAHAN, Larry 6-0 230 lbs. Jr. Missoula, Mont.—All-Big Sky defensive tackle in 1969. Cinderella player. Solid ballplayer with a great winning attitude. ZOOLOGY MAJOR.

DARROW, Barry 6-5 250 lbs. Soph. Great Falls, Mont.—Big surprise to Grizzly staff. Transferred from Western Montana and came out for spring practice. Excellent chance to start and will be tough. ENGLISH MAJOR.

FRUSTACI, Marty 5-11 210 lbs. Sr. Los Angeles, Calif. Transferred from Santa Monica City College, Calif., and saw considerable action at middle linebacker last fall. All-Conference J.C. PHYSICAL EDUCATION MAJOR.



Willie Postler

LEID, Jim 6-0 225 lbs. Soph. Waitsburg, Wash.—Started at offensive guard as a freshman and can play guard or defensive tackle. Solid performer that could develop into a great football player. MATHEMATICS MAJOR.

LUGVIEL, John 6-3 240 lbs. Jr. Longview, Wash.—Transferred from Grays Harbor. Can play either guard or tackle. Great blocker and rugged player. PHYSICAL EDUCATION MAJOR.



Ray Stachnik

POSTLER, Willie 6-5 230 lbs. Jr. Vancouver, B.C.—Redshirted one year and came on to start as an offensive guard last fall. Big, strong, quick and fast. Gets tougher with experience. ANTHROPOLOGY MAJOR.

RICHARDS, Ron 6-3 230 lbs. Soph. Butte, Mont.—Fine young Butte player. Tough and has all the attributes of a great lineman. Already earned a starting berth and was an All-Stater at Butte Public. BUSINESS ADMINISTRATION MAJOR.



Bob Guptill

BARRETT, Randy 6-2 215 lbs. Soph. Elm Grove, Wis.—Starter on offense and defense for last year's Cubs. Demonstrated great agility and quickness. PHYSICAL EDUCATION MAJOR.

SEMPLE, Greg 6-2 220 lbs. Jr. Seattle, Wash.—Transferred from Grays Harbor and is a strong candidate to start at center. Has the ability and desire to be a good one. PHYSICAL EDUCATION MAJOR.

STACHNIK, Ray 6-3 230 lbs. Jr. Chicago, Ill.—Was the 1969 starting center and has tremendous speed and blocking ability. All-City and All-Illinois as a prep athlete. Will be hard to beat—solid performer. HISTORY AND POLITICAL SCIENCE MAJOR.

BERDING, Gary 5-10 180 lbs. Jr. Cincinnati, Ohio — Transferred from Central Iowa J.C. where he led his team to a Wool Bowl victory last season. Good drop back and rollout passer with impressive statistics. Excellent execution and quick release. Strong runner. Strong starting contender. HISTORY AND POLITICAL SCIENCE MAJOR.

CHONG, Elroy 6-0 185 lbs. Soph. Honolulu, Hawaii—Youngest quarterback on the Tip squad. Started on the freshman Cub squad and is a great passer. Has great potential. PHYSICAL THERAPY MAJOR.

CAPUTO, Steve 6-1 195 lbs. Seattle, Wash.—Saw action as a quarterback and halfback last season. Rushed for 167 yards last season and is a powerful passer. Excellent chance to start. RADIO AND TV MAJOR.

BLANCAS, Arnie 6-0 195 lbs. Sr. Sumner, Wash.—1969 All-Big Sky first team. Scored 32 points and was the second leading rusher—765 yards for 6.3 average. Third leading receiver on 1969 unit—7 for 136 yards—19.4 yards per reception and two TDs. Great performer. PHYSICAL EDUCATION MAJOR.

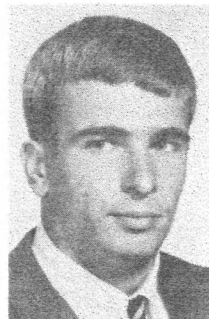
DEMPSEY, Dean 5-10 170 lbs. Jr. Norwalk, Calif.—Citrus J.C., Calif. transfer. Great knowledge of the game with attributes of a great player. Strong candidate to fill post vacated by Roy Robinson. PHYSICAL EDUCATION MAJOR.

GUPTILL, Bob 5-11 180 lbs. Jr. Great Falls, Mont.—Started as a sophomore and did not return to school last fall. Back on the team and a strong contender for a starting berth. Excellent player. Holder for Worrell. PHYSICAL EDUCATION MAJOR.

JACKSON, Lonzie 5-11 180 lbs. Jr. Oakland, Calif.—Transferred from Merritt J.C. in Southern California. Great speed and quickness. Strong contender to start. SOCIAL WELFARE MAJOR.



Pat Schruth



Bill Sterns



Bill Hickerson



Steve Caputo

KOTTKE, Warren 5-8 180 lbs. Soph. Great Falls, Mont.—Starter on frosh team. Leading high school rusher in 1968 for Russell High School, Great Falls. Strong and tough to stop. Will see a lot of action next fall. **BUSINESS MAJOR.**

LEIGH, David 5-11 180 lbs. Soph. Seattle, Wash.—Also a surprise to coaches. Always gets the job done. Solid performer. **PRE-MED MAJOR.**

PETERS, Robin 6-1 185 lbs. Jr. Cleveland, Ohio—Surprised the coaches as a sophomore and keeps improving. Saw a lot of action in 1969 and will be a starter in 1970. **HISTORY MAJOR.**

REILLY, Casey 5-10 190 lbs. Jr. Anaconda, Mont.—Started as a sophomore at halfback and will start again. A great hardhitting competitor with tremendous desire. Gained 345 yards in 1969 and averaged 3.9 per carry. Scored 42 points last season and runs for pay-dirt. **HISTORY MAJOR.**

SCHILLINGER, Jim 6-2 190 lbs. Jr. Vida, Mont.—A veteran from 1969 and a consistent performer who always improves. Saw considerable action on offense and defense last season and should see more action this year. **BUSINESS ADMINISTRATION MAJOR.**

SCHRUTH, Pat 6-0 185 lbs. Sr. Billings, Mont.—Second leading pass interceptor in 1969—(4). Hard hitter. Will have to battle to retain starting role. Tough and smart ballplayer. Persistent. **SOCIOLOGY MAJOR.**

DENNEHY, Mick 5-10 180 lbs. Jr. Butte, Mont.—Veteran from 1969 who saw considerable action at free safety and returning kickoffs and punts. Had an excellent spring and will push All-American Karl Stein for starting role. **PHYSICAL EDUCATION MAJOR.**

DOLAN, Pat 5-10 175 lbs. Sr. Great Falls, Mont.—Started last season at strong safety along with John Waxham. Hardhitting and tough ballplayer. Will see as much action this year. **RECREATION MAJOR.**

STEIN, Karl 6-0 185 lbs. Sr. San Anselmo, Calif.—All-American in every respect. Elected to two All-American

teams, the NCAA All-District 6 team and a unanimous choice as All-Big Sky. Set conference and school interception record of 11. Leading UM punt and kickoff return specialist. Will have to work for position. **ART MAJOR.**

WAXHAM, John 6-0 190 lbs. Sr. Seattle, Wash.—Most versatile defensive player on the team. Started consistently at strong safety toward end of 1969 season. Also plays middle linebacker. Great competitor with a fantastic attitude. Will start. **PHYSICAL EDUCATION MAJOR.**

GASKINS, Wally 5-9 215 lbs. Jr. Spokane, Wash.—Returns to football after four years in the military. All-American at Columbia Basin as a full-back and is getting old form back. Will see heavy action in 1970. **PHYSICAL EDUCATION MAJOR.**

KENT, Les 5-10 200 lbs. Sr. Honolulu, Hawaii—All-American second team in 1969 and a great back. All-Big Sky first team. UM leading rusher with 976 yards and a 6.5 average. Lost only four yards last season and scored four TDs. League's second leading rusher and first in the league for average yards per carry. **PHYSICAL EDUCATION MAJOR.**

SEVER, Monte 6-0 215 lbs. Soph. Butte, Mont.—Had a great freshman year and a great spring. Needs experience, otherwise a great one. 1968 Montana Player of the Year and All-State twice on the Butte Public championship teams. Excellent blocker and receiver. **GENERAL MAJOR.**

BOZZO, Tony 6-0 210 lbs. Sr. Salinas, Calif.—Came on strong as an outside linebacker last season. Hardhitter and will see considerable action. **PHARMACY MAJOR.**

FRASER, Steve 6-0 190 Soph. Aberdeen, Wash.—Developed consistently as a freshman and through spring practice. Has attitude and ability to be an excellent middle linebacker. **PHYSICAL EDUCATION MAJOR.**

GALLAGHER, Tim 6-2 220 lbs. Sr. Kalispell, Mont.—Has developed into a great outside linebacker. All-Big Sky

first team in 1969 and has a lot of pro scouts looking at him. A great solid ballplayer with all the credentials. **PHYSICAL EDUCATION MAJOR.**

HENNINGSEN, Curt 6-1 210 lbs. Soph. Renton, Wash.—Very good prospect. Reads the plays well and has excellent football sense. Hardhitter and will see a lot of action. **GENERAL MAJOR.**

HICKERSON, Bill 6-1 230 lbs. Sr. San Francisco, Calif.—Alternated as a starter last season. A hardhitting and tough ballplayer. Will be a top candidate for a starting spot in 1970. **BUSINESS ADMINISTRATION MAJOR.**

PUGH, Terry 6-0 200 lbs. Soph. Kalispell, Mont.—Has all the credentials to be a great one. Had a slow spring practice but with work could be a great football player. **BUSINESS ADMINISTRATION MAJOR.**

RICHTER, Jim 5-11 210 lbs. Soph. Newport, Wash.—Has potential to be a good linebacker. Learning the ins and outs of the position and has shown he can play football. **PRE-MED MAJOR.**

SPENCER, Bruce 6-1 210 lbs. Jr. Hoquiam, Wash.—Transferred from Grays Harbor this spring and seldom makes a mistake. A hardhitter who has demonstrated why Grays Harbor has always had championship teams. **BUSINESS ADMINISTRATION MAJOR.**

SEROWIK, Bob 6-1 200 lbs. Jr. Huntington Beach, Calif.—Transferred from Golden West J.C. in Calif. Hardhitting, aggressive player. A strong contender for the outside linebacker spot. **HISTORY AND POLITICAL SCIENCE MAJOR.**

STERNs, Bill 6-0 235 lbs. Jr. Stevenson, Wash.—A 1969 starter throughout his sophomore year. A rugged competitor. Quick and strong. A solid player who will have to work to start this year. **GENERAL MAJOR.**

WORRELL, Dan 5-11 180 lbs. Sr. Great Falls, Mont.—The greatest kicker in the history of the school. (See All-American page.) **PSYCHOLOGY MAJOR.**

All-Big Sky cornerback Roy Robinson (33) is shown covering Idaho's two-time All-American split receiver Jerry Hendren (84). Prior to the Montana game, the Idaho receiver was averaging 12 receptions and 208 yards per contest. He also was chalking up 2.33 touchdowns a game. Against the Grizzlies Robinson and crew held him scoreless and allowed him only 11 receptions for 111 yards.



DAN WORRELL—ALL-AMERICAN GRIZZLY KICKER

Dan Worrell is already the University of Montana's all-time top scorer and the greatest kicker in the history of Grizzly football. He is consistent from better than 40 yards and last fall against South Dakota State University booted a 50-yarder to set a new school and Dornblaser Stadium record. In 1969 he was the leading Grizzly scorer and tallied 71 points. Worrell kicked 40 of 41 conversions and was nine of 18 in the field goal department. His field goals travelled an average of 35.7 yards.

Worrell scored 113 points in his two year varsity career at UM and kicked 28 points his freshman season including 45 and 43-yarders. As a kicker at Great Falls Public High School, he scored 96 points.

In 1969 Worrell was the second best NCAA College Division kicker in the nation and sixth in the NCAA University and College Division. However, if the points the Montana specialist kicked in the Camellia Bowl were counted, he would be tied for fourth in this country among NCAA kickers. More than 500 kickers competed on the nation's college gridirons in 1969.



Worrell's record setting 50-yarder . . .

COLLEGE DIVISION STATS

- 1. Gary StiversBoise St. 79 pts.
- 2. DAN WORRELL...MONTANA 71 pts.

COMBINED DIVISIONS

- 1. Gary Stivers.....Boise St. 79
- 2. Bob Jacobs.....Wyoming 76
- 3. Dan Leatuhausen... Air Force 75
- 4. Henry Brown.....Missouri 71
- 4. Steve Horowitz.....Stanford 71
- 4. Ed Gallardo.....Arizona St. 71
- 4. DAN WORRELL...MONTANA 71
- 5. John Reilly.....Auburn 69
- *6. Dan Worrell.....Montana 67

*Regular season stats

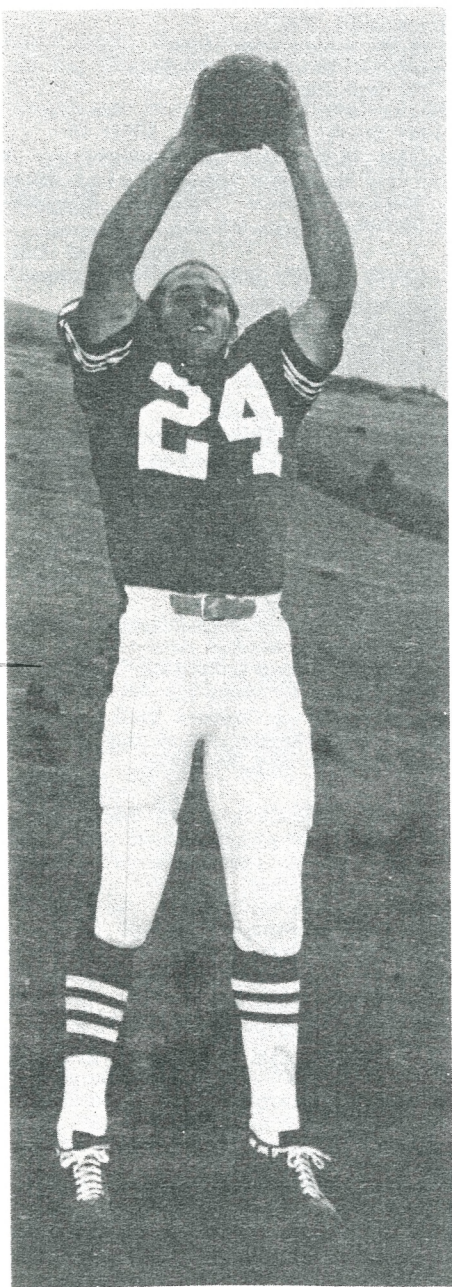
KARL STEIN—A DIFFERENT KIND OF ALL-AMERICAN

Last season Karl Stein was named to two squads, the All-Big Sky first team and the NCAA All-District 6 first team. He broke three school records and tied two more. Stein, in setting his University of Montana pass interception record of 11, also broke the conference record of 10 interceptions in a season. He received honorable mention on the Kodak and AP All-American teams.

The reason Stein is a different type of All-American is that he is an art major. Not too many athletes in this nation have an appreciation for the fine arts, and if they do it is usually in the field of music. Stein loves to paint and design and will graduate from the University of Montana next spring with a Bachelor of Arts degree in art.

The only other team member of the 1969 squad to show an interest in art was Roy Robinson, also an All-Big Sky first team selection and NCAA All-District 6 choice. Robinson minored in art, and painted many of the signs that guide skiers down the slopes on the Missoula ski areas. Robinson was graduated from the University of Montana last spring and is now with the Atlanta Falcons.

Montana's All-American art major, Karl Stein . . .



Arnie Blancas
All Big Sky



Jim Nordstrom
All Big Sky



Ray Brum
AP All-American
(Honorable Mention)



Roy Robinson
All Big Sky
All District Six
(NCAA)



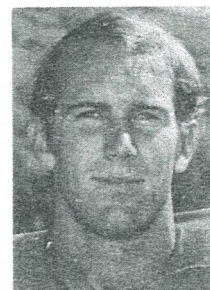
Tim Gallagher
All Big Sky



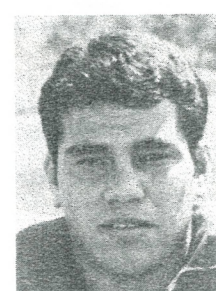
John Stedham
All Big Sky



Bill Gutman
All Big Sky



Karl Stein
All Big Sky
Kodak All-American
(Honorable Mention)
AP All-American
(Honorable Mention)



Les Kent
All Big Sky
AP All-American
(Second Team)



Larry Stranahan
All Big Sky

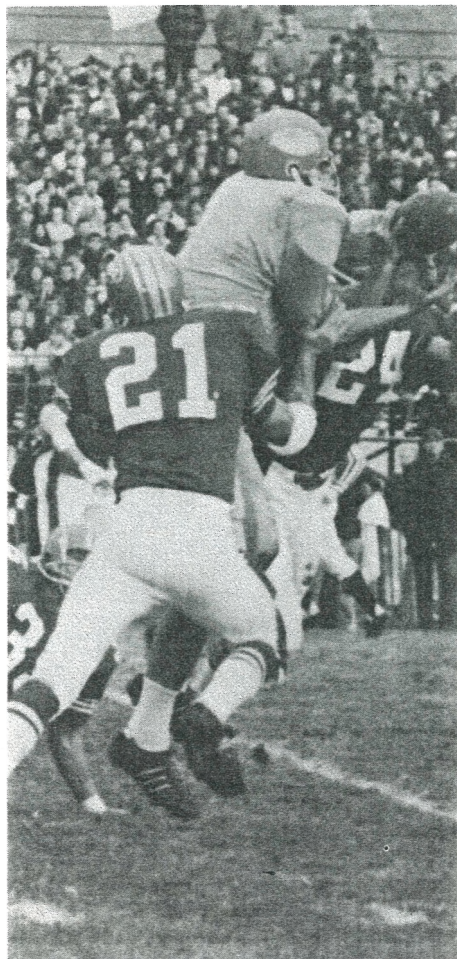


Larry Miller
All Big Sky
AP All-American
(Third Team)



Tuufuli Uperesa
All Big Sky
All District Six
(NCAA)
Kodak All-American
(Honorable Mention)
AP All-American
(Second Team)

Coaches pre-game strategy session on the road . . .



Montana's record-setting defense led by John Waxham (21) and Karl Stein (24).

1970 Schedule

UNIVERSITY OF NORTH DAKOTA, SEPT. 12 AT BILLINGS, 8 P.M.

Location: Grand Forks, N.D.
Enrollment: 8,500
Conference: North Central
SID: Lee Bohert
Coach: Jerry Olson

Nickname: Sioux
Colors: Green and White
Stadium: Memorial (10,000)
1969 Record: 4-5
Series: Montana 9, UND 5, ties 1
1969 Score: Montana 24, UND 10

OUTLOOK: Coach Olson lost only 10 lettermen, including 8 starters, and has 25 returning. Olson fears a lack of depth. Offensive standouts are quarterback Mike Conner, center Doug Drexler and receiver Sheldon Joppru. Defensive standouts are end Greg Schneider and linebacker Don McLean.

NORTHERN ILLINOIS UNIVERSITY, SEPT. 19 AT DEKALB, 7:30 P.M.

Location: Dekalb, Ill.
Enrollment: 25,500
Conference: Independent
SID: Bud Nangle
Coach: Richard W. (Doc) Urich

Nickname: Huskies
Colors: Cardinal and Black
Stadium: Northern Illinois Stadium (22,000)
1969 Record: 3-7
Series: First meeting

OUTLOOK: 22 lettermen are returning; however, Coach Urich lost 18 lettermen. Lost six starters—three on both units. Eight offensive starters and seven defensive starters returning. Outstanding freshman crop in 1969 (undefeated 4-0). All-American fullback John Lalonde is back.

NORTHERN ARIZONA UNIVERSITY, SEPT. 26 AT FLAGSTAFF, 1:30 P.M.

Location: Flagstaff, Ariz.
Enrollment: 9,000
Conference: Big Sky
SID: Norm Borg
Coach: John Symank

Nickname: Lumberjacks
Colors: Blue and Gold
Stadium: Lumberjack Stadium (8,350)
1969 Record: 7-3
Series: Montana 2, NAU 2
1969 Score: Montana 52, NAU 7

OUTLOOK: Coach Symank lost 26 lettermen including quarterback Bobby Stewart. Has 17 returning lettermen including flanker Steve Maier and a redshirt Rick Saathoff, a 6-7 245 lb. defensive tackle. Lacks depth in key positions.

WEBER STATE COLLEGE, OCT. 3 AT MISSOULA, 1:30 P.M.

Location: Ogden, Utah
Enrollment: 10,500
Conference: Big Sky
SID: Don Spainhower
Coach: Sark Arslanian

Nickname: Wildcats
Colors: Purple and White
Stadium: Wildcat (17,500)
1969 Record: 6-4
Series: Montana 5, Weber 3
1969 Score: Montana 20, Weber 17

OUTLOOK: Coach Arslanian lost 20 lettermen but has 24 returning. Has 25 J.C. transfers and nine redshirts including seven quarterbacks vying for team positions. Has fullback Jack Brown and the Big Sky's leading rusher, Sam Gipson back.

UNIVERSITY OF IDAHO, OCT. 10 AT MOSCOW, 1:30 P.M.

Location: Moscow, Idaho
Enrollment: 6,500
Conference: Big Sky
SID: Bob Maker
Coach: Don Robbins

Nickname: Vandals
Colors: Silver and Gold
Stadium:
1969 Record: 2-8
Series: Montana 14, Idaho 36, tie 1
1969 Score: Montana 34, Idaho 9

OUTLOOK: Coach Robbins is in his first season and has 26 lettermen returning; however, 18 lettermen are missing from the 1969 squad. All-American quarterback Steve Olson is back along with J.C. transfer Frank Reilly.



Jim Nordstrom, defensive end, tri-captain . . .

IDAHO STATE UNIVERSITY, OCT. 17 AT POCATELLO, 8 P.M.

Location: Pocatello, Idaho
Enrollment: 6,500
Conference: Big Sky
SID: Glenn Alford
Coach: Ed Cavanaugh

Nickname: Bengals
Colors: Orange and Black
Stadium: Minidome (12,000)
1969 Record: 5-5
Series: Montana 7, ISU 4
1969 Score: Montana 46, ISU 36

OUTLOOK: Coach Cavanaugh lost 15 lettermen and has 26 returning including All-Big Sky quarterback Jerry Dunne and all-conference end Steve Mandelkow. ISU has 14 J.C. transfers and a crop of top redshirts and freshmen to fill in. The Bengals are expected to run more in 1970.

UNIVERSITY OF SOUTH DAKOTA, OCT. 24 AT VERMILLION, 1:30 P.M.

Location: Vermillion, S.D.
Enrollment: 5,000
Conference: North Central
SID: Bud Brown
Coach: Joe Salem

Nickname: Coyotes
Colors: Red and White
Stadium: Inman Field (10,000)
1969 Record: 3-7
Series: Montana 3, USD 4
1969 Score: Montana 31, USD 20

OUTLOOK: Coach Salem lost 13 lettermen including All-North Central fullback Dan Hankins; however, he has 27 lettermen to fill the gaps. Salem also lost All-American tackle John Kohler. Plans are to emphasize defense, since last season his offense rewrote Coyote record books and bolstered a poor record.

PORTLAND STATE UNIVERSITY, OCT. 31 AT MISSOULA, 2:15 P.M.

(Homecoming)

Location: Portland, Ore.
Enrollment: 11,500
Conference: Independent
SID: Larry Sellers
Coach: Don Read

Nickname: Vikings
Colors: Green and White
Stadium: Portland Civic (33,000)
1969 Record: 6-4
Series: Montana 5, PSU 0
1969 Score: Montana 49, PSU 14

OUTLOOK: Coach Read had his best season ever at Portland State last year and has 25 lettermen returning to start another good year. He lost 14 lettermen. The NCAA College Division passing leader Tim Von Dulm is back with a host of fine receivers.

MONTANA STATE UNIVERSITY, NOV. 7 AT MISSOULA, 1:30 P.M.

Location: Bozeman, Mont.
Enrollment: 7,900
Conference: Big Sky
SID: Ken Nicholson
Coach: Tom Parac

Nickname: Bobcats
Colors: Blue and Gold
Stadium: Gattoin Field (9,000)
1969 Record: 1-8
Series: Montana 43, MSU 20, ties 5
1969 Score: Montana 7, MSU 6

OUTLOOK: Coach Tom Parac has a new look at MSU this fall. He has three new assistant coaches to guide his 22 returning lettermen and a host of J.C. transfers. Parac has nine offensive starters back and eight defensive regulars returning. MSU's defense should be strong up front again next fall.

SOUTH DAKOTA STATE UNIVERSITY, NOV. 14 AT BROOKINGS, 1:30 P.M.

Location: Brookings, S.D.
Enrollment: 6,100
Conference: North Central
SID: Dave Martin
Coach: Dean Pryor

Nickname: Jackrabbits
Colors: Blue and Yellow
Stadium: Coughlin Alumni Stadium
(10,500)
1969 Record: 3-7
Series: Montana 1, USDS 0
1969 Score: Montana 58, USDS 0

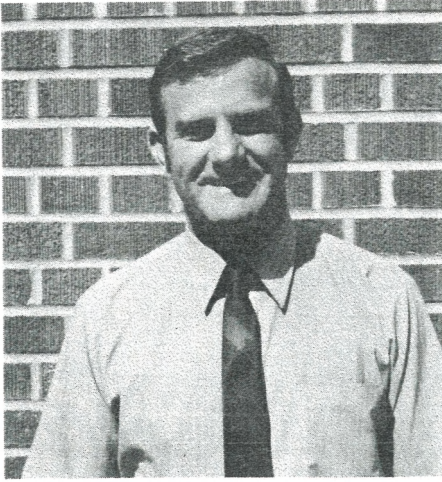
OUTLOOK: South Dakota State has a new coach, Dean Pryor, former assistant at Kansas State University and has a nucleus of 25 lettermen returning. He lost All-North Central stars Clyde Hagen, Jim Langer and Tim Roth. Pryor is counting on Cal Riesgaard and company to provide a strong defense.



Coach Swarthout's free ride . . .



Go Grizzlies Go!!!!



Coach Reid Miller

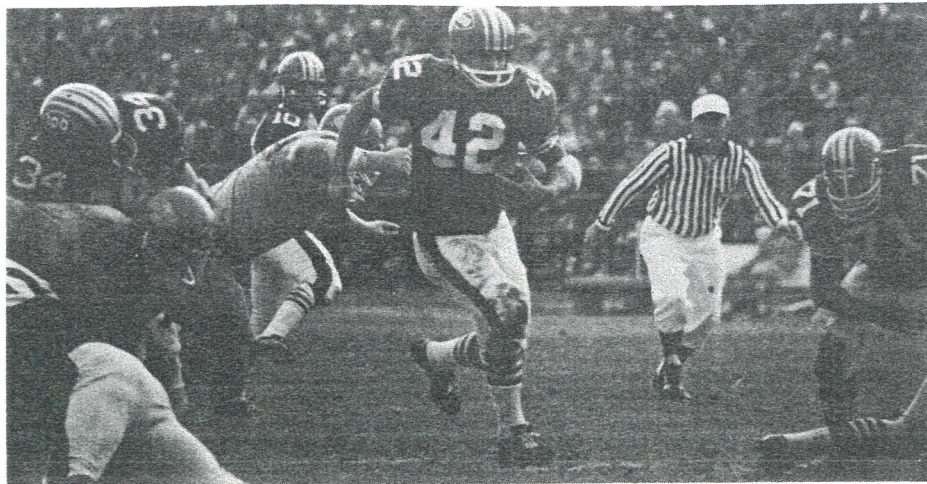
Dave Manovich is the recipient of the first George P. Dahlberg Scholarship established in 1970 to honor the former UM basketball coach, athletic director and physical education instructor who retired last spring. Dahlberg retired after 33 years of service to the University of Montana. Manovich was an all-around athlete for Butte Public High School and played on two Class AA state championship teams. He was All-State first team both his junior and senior years for the Bulldogs. The Butte freshman also captured second in the Class AA discus competition in the 1970 state finals. Manovich started in basketball for Butte. He was selected because of his outstanding scholarship, citizenry and athletic achievement. Manovich plans to attend law school following graduation.



Cubs To Watch

- Butch Allinger, 5-10 190 lbs. halfback
Hudson Bay High School—
Vancouver, Wash.
All-Southwestern Washington
- Rick Anderson, 6-0 195 lbs. tackle
North Thurston High School—
Lacey, Wash.
All-Southwestern Washington
Honors Student (3.09)
- Dan Bain, 5-10 180 lbs. halfback
Flathead County High School—
Kalispell, Mont.
All-Class AA honorable mention
Honors Student (3.0)
- Jay Baumburger, 5-10 170 lbs.
quarterback
Great Falls Public—
Great Falls, Mont.
Sunkist All-American
Lee Newspaper "Player of the Year"
(1969)
All-Class AA first team
- Kit Blue, 6-0 190 lbs. linebacker
Olympia High School—
Olympia, Wash.
Sunkist All-American
All-Washington
All-Southwestern Washington
Honors Student (3.39)
- Roy Bradley, 6-2 215 lbs. tackle
Hellgate High School—
Missoula, Mont.
All-Class AA honorable mention
- Doug Cleveland, 6-4 220 lbs. tackle
Butte Public—Butte, Mont.
All-Class AA first team
- Jerry Cooley, 6-3 215 lbs. fullback
Anacortes High School—
Anacortes, Wash.
All-Northwest Washington (Class AA)
- Curt Donner, 6-3 195 lbs. end
Lewis & Clark High School—
Spokane, Wash.
All-City second team
- Dennis Doyle, 6-3 198 lbs. linebacker
Edina High School—Edina, Minn.
All-Suburban (Minneapolis)
All-Minnesota
- Kevin Flagler, 5-10 170 lbs.
quarterback
Laurel High School—Laurel, Mont.
All-Class A first team
Also will play basketball (guard)
All-Class A basketball
- Keith Lindstrom, 6-6 235 lbs. tackle
Baker High School—Baker, Mont.
All-Class B (Southeastern Montana)
Also will play basketball (center)
All-Class B basketball
- Blake Lyman, 6-3 185 lbs. end
Sentinel High School—
Missoula, Mont.
All-Class AA (second unit)
Honors Student (3.45)
Also will play basketball (forward)
All-Western Division Big 16
(first team)
- Dave Manovich, 6-1 190 lbs. halfback
Butte Public—Butte, Mont.
Dahlberg Award winner
All-Class AA twice (first teams)
- Sam Milodragovich, 5-10 175 lbs.
fullback
Butte Public—Butte, Mont.
All-Class AA (first teams)
- Doug C. Nakoa, 6-1 215 lbs. fullback
Iolani High School—
Honolulu, Hawaii
All-Hawaii (first teams) twice
- Tei Nash, 6-3 185 lbs. end
Hellgate High School—
Missoula, Mont.
All-Class AA (second team)
Also will play basketball (forward)
- Jim Olson, 6-1 200 lbs. halfback
Edina High School—Edina, Minn.
All-Suburban (Minneapolis)
All-Minnesota (first team)
- Ken Read, 5-10 175 lbs. halfback
Highline High School—Seattle, Wash.
All-Washington (first team)
Leading ground-gainer in Washington
- Dennis Schneiter, 6-2 190 lbs.
defensive back
Hellgate High School—
Missoula, Mont.
- Mike Shaw, 6-1 180 lbs. end
Rogers High School—Spokane, Wash.
All-Spokane
- Mike Simmons, 6-1 210 lbs. fullback
Gresham High School—
Portland, Ore.
All-Metro (Portland) first unit
- Ted Solomon, 5-11 230 lbs. guard
Gonzaga Prep—Spokane, Wash.
All-Spokane (twice)
All-Washington (first team)
- John Stark, 5-10 185 lbs. halfback
Hazen High School—Seattle, Wash.
All-Western Washington
Gained over 1,000 yards
- Rob Stark, 6-3 180 lbs. end
Polson High School—Polson
All-Class B
- Ben Surwill, 6-1 220 lbs. tackle
Billings West—Billings, Mont.
All-Class AA
- Steve Taylor, 6-2 180 lbs.
defensive end
Great Falls Public—
Great Falls, Mont.
All-Class AA (first team)
- Bob Turnquist, 5-11 170 lbs. kicker
Billings Senior—Billings, Mont.
All-Class AA (first team)

Arnie Blancas (42) breaks through the South Dakota State line on a Texas option trap play.



1969 Montana Statistics

TEAM STATISTICS

	UM	Opp.
TOTAL FIRST DOWNS	205	161
rushing	160	67
passing	39	79
penalty	6	15
TOTAL RUSHING PLAYS	624	405
TOTAL RUSHING YD.	3657	1445
Yards lost rushing	342	330
NET YARDS RUSHING	3315	1115
Passes attempted	148	360
Passes complete	60	152
Passes intercepted	8	23
NET YARDS PASSING	1220	1705
TOTAL PLAYS OFFENSE	772	765
TOTAL YARDS OFFENSE	4548	2820
Punts/yds/blkd	61/2274/1	74/2859/1
Punting average	37.2	38.6
Fumbles/lost	30/13	27/13
Penalties/yds	91/1037	57/613
TOTAL TOUCHDOWNS	44	14
rushing	29	6
passing	15	8
others	0	0
PAT kick	40/41	10/10
PAT run and pass	2/3	2/4
Field Goals	9/18	7/17
TOTAL POINTS	335	119

INTERCEPTIONS

	No.	Yds.	Avg.	TD
Stein	11	191	17.4	0
Schruth	4	9	2.5	0
Gallagher	2	29	14.5	0
Hickerson	1	5	5.0	0
Peters	1	3	3.0	0
Bozzo	1	0	0.0	0
Robinson	1	0	0.0	0
Nordstrom	1	0	0.0	0
Ochoa	1	0	0.0	0
TOTAL	23	237	10.3	0

SCORING

	TD	R	P	K	FG	Pts.
Worrell	0	0	0	40/41	9/18	67
Buzzard	8	1	0	0	0	50
Reilly	7	0	0	0	0	42
Blancas	5	1	0	0	0	32
Bain	5	0	0	0	0	30
Brum	4	0	0	0	0	24
Kent	4	0	0	0	0	24
Hoffmann	4	0	0	0	0	24
DeBord	3	0	0	0	0	18
McMahon	3	0	0	0	0	18
Caputo	1	0	0	0	0	6
TOTALS	44	2	0	40/41	9/18	335

RUSHING

	TC	YG	YL	Net	Avg.	TD
Kent	150	976	4	972	6.5	4
Blancas	113	765	56	709	6.3	3
Brum	86	458	103	355	4.1	4
Buzzard	67	389	29	360	5.4	7
Hoffmann	71	411	12	399	5.6	4
Reilly	78	345	43	302	3.9	6
Caputo	22	167	30	137	6.2	1
McMahon	4	24	5	19	4.8	0
Robinson	1	5	0	5	5.0	0
Schillinger	10	20	3	17	1.7	0
Ochoa	12	73	10	63	5.3	0
Bain	2	0	13	-13	-6.5	0
Fisher	8	24	34	-10	-1.25	0
TOTALS	624	3657	342	3315	5.3	29

PASSING

	Att.	Com.	Pct.	Int.	Yds.	TD
Brum	119	48	.403	6	969	11
Fisher	25	11	.440	1	199	3
Ochoa	1	1	1.000	0	54	1
Caputo	2	1	.500	0	11	0
Blancas	1	0	.000	1	0	0
TOTALS	148	61	.475	8	1233	15

TOTAL OFFENSE

	Plays	Rush	Pass	Totals
Brum	205	355	969	1324
Kent	150	972		972
Blancas	114	709	0	709
Buzzard	67	360		360
Hoffmann	71	399		399
Reilly	78	302		302
Fisher	33	-10	199	189
Caputo	24	137	11	148
Ochoa	13	63	54	117
McMahon	4	19		19
Robinson	1	5		5
Schillinger	10	17		17
Bain	2	-13		-13
TOTALS	772	3315	1233	4548

PUNTING

	No.	Yds.	Avg.	Blkd.
Ochoa	61	2274	37.2	1

RECEIVING

	No.	Yds.	Avg.	TD
Bain	17	473	27.8	5
DeBord	11	268	24.4	3
Blancas	7	136	19.4	2
McMahon	8	147	18.3	3
Reilly	8	111	13.9	1
Buzzard	4	55	13.8	1
Miles	2	23	11.5	0
Kent	2	8	4.0	0
Ochoa	1	13	13.0	0
Caputo	1	-7	-7.0	0
TOTALS	61	1233	20.2	15

PUNT RETURNS

	No.	Yds.	Avg.	TD
Stein	27	191	7.1	0
Dennehy	6	52	8.7	0
Robinson	3	9	3.0	0
TOTALS	36	252	7.0	0

KICKOFF RETURNS

	No.	Yds.	Avg.	TD
Stein	16	436	29.2	0
Robinson	6	91	15.2	0
Buzzard	2	65	32.5	0
Blancas	2	26	13.0	0
Dennehy	1	8	8.0	0
Stachnik	1	0	0.0	0
Stedham	1	0	0.0	0
TOTALS	29	626	21.6	0

TOTAL OFFENSIVE AVERAGE PER GAME

UM	454.8 yards
Opponents	282.0 yards

RUSHING AVERAGE PER GAME

UM	331.5 yards
Opponents	111.5 yards

PASSING AVERAGE PER GAME

UM	123.3 yards
Opponents	170.5 yards

1969 Big Sky Statistics

ALL GAMES						CONFERENCE GAMES					
School	W	L	Pct.	Pts.	Opp.	School	W	L	Pct.	Pts.	Opp.
Montana	10	0	1.000	335	119	Montana	4	0	1.000	107	68
Weber State	6	4	.600	277	160	Weber State	3	1	.750	126	55
Idaho State	5	5	.500	356	287	Idaho State	2	2	.500	128	123
Idaho	2	8	.200	306	346	Idaho	1	3	.250	89	130
Montana State	1	8	.111	106	243	Montana State	0	4	.000	37	111

Team Statistics

RUSH OFFENSE						TOTAL OFFENSE					
School	TC	G	L	Net	Avg.	School	Plays	Rush	Pass	Yards	Avg.
Montana	624	3647	340	3307	331	Montana	772	3307	1233	4550	454
Weber	593	2714	394	2318	232	ISU	866	1586	2631	4217	422
MSU	521	1849	389	1460	162	Idaho	865	1017	2741	3758	376
ISU	450	1853	267	1586	159	Weber	784	2318	1039	3358	336
Idaho	396	1525	508	1017	102	MSU	693	1460	686	2146	238

RUSH DEFENSE						TOTAL DEFENSE					
School	TC	G	L	Net	Avg.	School	Plays	Rush	Pass	Yards	Avg.
Weber	430	1547	459	1088	109	Weber	722	1088	1493	2581	258
Montana	405	1445	330	1115	111	Montana	765	1115	1665	2780	278
ISU	458	1817	321	1496	150	MSU	657	1382	1580	2962	329
MSU	431	1750	308	1382	153	Idaho	752	2019	1784	3803	380
Idaho	512	2416	397	2019	202	ISU	808	1496	2460	3956	396

PASS OFFENSE							
School	Att.	Comp.	Int.	Yards	Pct.	Avg.	TDs
Idaho	469	223	33	2741	.475	274	16
Idaho State	416	186	20	2631	.447	263	30
Weber State	191	82	8	1039	.429	104	7
Montana	148	61	8	1233	.412	123	15
Montana State	172	66	13	686	.384	76	3

PASS DEFENSE							
School	Att.	Comp.	Int.	Yards	Pct.	Avg.	TDs
Weber State	292	110	20	1493	.377	149	7
Montana	360	152	23	1665	.422	166	8
Montana State	226	101	11	1580	.446	176	17
Idaho State	350	161	19	2460	.460	246	26
Idaho	240	112	13	1784	.466	178	19

Individual Leaders

RUSHING						
Name	TC	G	L	Net	Avg.	
Gipson (W)	223	1093	106	987	4.4	
Kent (M)	150	976	4	972	6.5	
Brown (W)	164	842	24	818	5.0	
Blancas (M)	113	765	56	709	6.3	
Hughes (MSU)	172	674	30	644	3.2	

PASSING						
Name	Att.	Comp.	Int.	Yards	Pct.	TDs
Dunne (ISU)	262	120	11	1570	458	16
Olson (I)	229	112	14	1421	489	9
Halt (ISU)	161	65	9	1052	404	14
Brum (M)	119	48	6	1049	403	11
Hathaway (I)	101	46	5	453	456	2

TOTAL OFFENSE				RECEIVING				
Name	Plays	Rush	Pass	Total	Name	No.	Yards	TDs
Dunne (ISU)	387	523	1570	2093	Bell (ISU)	96	1522	20
Brum (M)	205	345	1049	1394	Hendren (I)	95	1455	12
Olson (I)	264	-76	1421	1345	Harris (ISU)	47	594	6
Halt (ISU)	184	15	1052	1067	Sizelove (I)	35	416	2
Gipson (W)	231	987	67	1054	Moreland (I)	26	197	1
Kent (M)	150	972		972	Jackson (ISU)	22	331	3

SCORING					
Name	TDs	1 pt.	2 pt.	FG	Total Points
Bell (ISU)	21		2		130
Gipson (W)	12				72
Hendren (I)	12				72
Worrell (M)		40		9	67
Nunez (W)		31		8	55
Brown (W)	9				54

INTERCEPTIONS				KICKOFF RETURNS			
Name	No.	Yds.	TDs	Name	No.	Yards	Avg.
Stein (M)	11	191	0	Harris (ISU)	22	726	33.0
Williams (W)	4	21	0	Stein (M)	11	437	27.3
Wickersham (MSU)	4	19	0	Gipson (W)	13	317	24.4
Schruth (M)	4	9	0	Bell (ISU)	15	321	21.4
				Guillory (I)	16	329	20.6

PUNTING				PUNT RETURNS			
Name	No.	Yards	Avg.	Name	No.	Yards	Avg.
Pezeley (W)	66	2645	40.1	Moreland (I)	25	260	14.0
Davis (I)	55	2180	39.6	Edwards (W)	18	245	13.6
Buono (ISU)	67	2604	38.8	Stein (M)	27	194	7.2
Ochoa (M)	60	2298	38.3	Wiley (W)	14	99	7.1

Montana's homecoming is loaded with attractions.



Ten-Year Game Results

1959			1965		
UM	Opponent	Opp.	UM	Opponent	Opp.
19	North Dakota	27	13	University of Utah	28
0	University of Wyoming	58	14	South Dakota	15
12	Brigham Young University	0	16	Idaho State	0
12	Denver University	27	15	Weber State	14
0	Utah State	28	21	Utah State	54
14	University of New Mexico	55	7	University of Idaho	35
16	Colorado State	26	13	University of the Pacific	7
6	Montana State	40	7	Montana State	24
6	University of Idaho	9	14	Western Michigan	17
	(1-8)		33	Portland State	7
				(4-6)	
1960			1966		
UM	Opponent	Opp.	UM	Opponent	Opp.
21	North Dakota	14	6	North Dakota	30
0	University of Wyoming	14	7	South Dakota	21
12	Utah State	14	10	Portland State	0
18	University of Idaho	14	0	Weber State	28
26	Denver University	12	0	University of the Pacific	28
6	Brigham Young University	7	14	Idaho State	17
26	Colorado State	14	8	Northern Arizona	34
10	Montana State	6	0	Montana State	38
6	University of Utah	16	6	University of Idaho	40
7	University of New Mexico	24		(1-8)	
	(5-5)				
1961			1967		
UM	Opponent	Opp.	UM	Opponent	Opp.
0	University of Wyoming	29	19	North Dakota	14
6	Utah State	54	7	South Dakota	3
40	University of New Mexico	8	13	Weber State	12
6	Brigham Young University	7	21	University of the Pacific	7
12	University of Utah	24	14	University of Idaho	19
22	Colorado State	19	20	Idaho State	0
9	Montana State	10	10	Northern Arizona	7
14	University of Idaho	16	8	Montana State	14
	(2-6)		14	Utah State	20
			55	Portland State	7
				(7-3)	
1962			1968		
UM	Opponent	Opp.	UM	Opponent	Opp.
0	University of Wyoming	13	37	North Dakota	10
8	North Dakota	14	0	South Dakota	21
20	Utah State	43	58	Portland State	0
22	University of Idaho	16	3	Utah State	50
25	Weber College	6	45	University of Idaho	56
0	Brigham Young University	27	13	Idaho State	23
22	Idaho State	15	24	Montana State	29
36	Montana State	19	16	Weber State	20
12	University of New Mexico	41	0	Northern Arizona	18
16	Colorado State	15		(2-7)	
	(5-5)				
1963			1969		
UM	Opponent	Opp.	UM	Opponent	Opp.
16	British Columbia	0	24	North Dakota	10
0	University of Wyoming	35	31	South Dakota	20
13	North Dakota	19	52	Northern Arizona	7
0	Brigham Young University	27	20	Weber State	17
13	Idaho State	14	34	Idaho	9
6	Utah State	62	46	Idaho State	36
6	University of New Mexico	24	49	Portland State	14
13	Weber State	19	7	Montana State	6
3	Montana State	18	14	Cal Poly (San Luis Obispo)	0
12	Colorado State	20	58	South Dakota State	0
	(1-9)			(10-0)	
1964			Camellia Bowl		
UM	Opponent	Opp.	3	North Dakota State	30
29	British Columbia	24			
7	University of the Pacific	23			
0	University of New Mexico	20			
0	Utah State	41			
20	Weber State	12			
7	Western Illinois	0			
7	Idaho State	14			
6	Montana State	30			
7	San Diego Marines	43			
	(3-6)				

The fans go wild after a Grizzly touch-down.



Records

Single Season

RUSHING

MOST CARRIES
160, Paul Connelly, 1965
MOST NET YARDS
972, Les Kent, 1969
HIGHEST AVERAGE PER CARRY
(Minimum 50 carries)
8.2, Dick Imer, 1953 (86 for 703 yards)
MOST TOUCHDOWNS RUSHING
9, Dick Imer, 1954

PASSING

MOST PASSES ATTEMPTED
184, Tom Kingsford, 1950
MOST PASSES COMPLETED
84, Tom Kingsford, 1950
MOST YARDS PASSING
1,363, Tom Kingsford, 1950
HIGHEST COMPLETION PERCENTAGE
(Minimum 100 attempts)
52.1, Earl Keeley, 1957 (63 for 121)
MOST PASSES HAD INTERCEPTED
14, Tom Kingsford, 1950
MOST TOUCHDOWN PASSES THROWN
11, Ray Brum, 1969

TOTAL OFFENSE

MOST TOTAL PLAYS
254, Tom Kingsford, 1950
MOST TOTAL YARDS
1,324, Ray Brum, 1969 (Rushing—355;
Passing—969)

PASS RECEIVING

MOST PASSES CAUGHT
32, Ray Bauer, 1950
MOST YARDS BY RECEIVING
563, Ray Bauer, 1950
MOST TOUCHDOWN PASSES CAUGHT
5, Ron Baines, 1967
5, Doug Bain, 1969

PUNTING

MOST PUNTS
85, Dewey Allen, 1966
MOST TOTAL YARDS PUNTED
2,517, Lon Howard, 1968
HIGHEST PUNTING AVERAGE
(Minimum 35 Punts)
41.3, Lon Howard, 1968 (61 for 2,517 yards)

PUNT RETURNS

MOST PUNTS RETURNED
27, Karl Stein, 1969
MOST YARDS PUNTS RETURNED
319, Ron Baines, 1967
HIGHEST AVERAGE PER PUNT RETURN
(Minimum 15 returns)
12.7, Ron Baines, 1968 (15 for 190 yards)

KICKOFF RETURNS

MOST KICKOFFS RETURNED
24, Warren Hill, 1966
MOST YARDS KICKOFFS RETURNED
560, Warren Hill, 1966
HIGHEST AVERAGE PER KICKOFF RETURN
(Minimum 15 returns)
27.2, Karl Stein, 1969 (16 for 436 yards)

PASS INTERCEPTIONS

MOST PASSES INTERCEPTED
11, Karl Stein, 1969
MOST YARDS INTERCEPTIONS RETURNED
(Minimum 3 interceptions)
191, Karl Stein, 1969

SCORING

MOST POINTS SCORED
67, Dan Worrell, 1969
MOST TOUCHDOWNS SCORED
10, Dick Imer, 1954
MOST FIELD GOALS SCORED
9, Dan Worrell, 1969
MOST CONVERSIONS BY KICKING SCORED
40, Dan Worrell, 1969

Single Game

RUSHING

MOST CARRIES
25, Les Kent vs. Idaho State, 1969
MOST NET YARDS
227, Les Kent vs. Portland State, 1969
MOST TOUCHDOWNS RUSHING
3, Jack O'Loughlin vs. Brigham Young University, 1949
3, Bryan Magnuson vs. Portland State, 1967
3, John McBurrows vs. Portland State, 1968
3, Mike Buzzard vs. Portland State, 1969
LONGEST TOUCHDOWN BY RUSHING
79 yards, Roy Malcolm vs. Montana State College, 1949

PASSING

MOST PASSES ATTEMPTED
32, John Schulz vs. Montana State College, 1959
32, Ray Brum vs. Weber State College, 1968
MOST PASSES COMPLETED
16, Tom Kingsford vs. University of Oregon, 1950
MOST YARDS PASSING
256, Tom Kingsford vs. Montana State College, 1950
MOST TOUCHDOWNS BY PASSING
4, Tom Kingsford vs. Eastern Washington State College, 1950
HIGHEST PERCENTAGE OF COMPLETIONS
(Minimum 10 attempts)
.750, Tom Huffer vs. Idaho State University, 1963 (12 for 16)
MOST PASSES HAD INTERCEPTED
5, John Vaccarelli vs. University of the Pacific, 1966
LONGEST TOUCHDOWN PASS
76 yards, Pete Mullins vs. University of Idaho, 1968

TOTAL OFFENSE

MOST TOTAL PLAYS
43, Tom Kingsford vs. San Jose State College, 1950
MOST TOTAL YARDS
265, Tom Kingsford vs. Montana State College, 1950

PASS RECEIVING

MOST PASSES CAUGHT
8, Ray Bauer vs. Eastern Washington State College, 1950
8, Larry Meyers vs. University of Idaho, 1957
MOST YARDS BY RECEIVING
166, Rick Strauss vs. Portland State College, 1967
MOST TOUCHDOWN PASSES CAUGHT
3, Ray Bauer vs. Eastern Washington State College, 1950
LONGEST TOUCHDOWN PASS CAUGHT
76 yards, Jim DeBord vs. University of Idaho, 1968

PUNTING

MOST PUNTS
10, Bob Byrne vs. Colorado A&M, 1951
10, Dewey Allen vs. Montana State University, 1966
10, Lon Howard vs. University of South Dakota, 1968
10, Lon Howard vs. Utah State University, 1968
MOST YARDS PUNTED
443, Lon Howard vs. Utah State University, 1968
BEST AVERAGE PER PUNT
49.2 yards, John Ochoa vs. Northern Arizona (6 for 295 yards), 1969

PUNT RETURNS

MOST PUNTS RETURNED
5, Charles Murphy vs. Utah State College, 1950
5, Warren Hill vs. University of North Dakota, 1966
5, Ron Baines vs. Northern Arizona University, 1967
5, Karl Stein vs. Weber State, 1969
MOST YARDS PUNTS RETURNED
119, Ron Baines vs. University of North Dakota, 1968
LONGEST TOUCHDOWN BY PUNT RETURN
83 yards, Ron Baines vs. University of the Pacific, 1967

KICKOFF RETURNS

MOST KICKOFFS RETURNED
6, Ron Baines vs. University of Idaho, 1968
MOST YARDS KICKOFFS RETURNED
155, Warren Hill vs. University of South Dakota, 1966
LONGEST TOUCHDOWN BY KICKOFF RETURN
70 yards, Severn Hayes vs. Colorado A&M, 1956

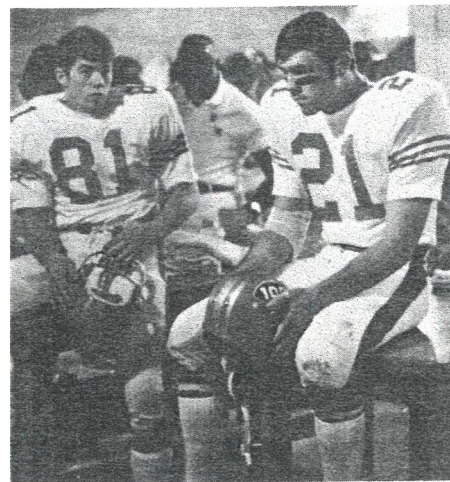
PASS INTERCEPTIONS

MOST PASSES INTERCEPTED BY
3, Mick O'Neill vs. University of Idaho, 1968
3, Karl Stein vs. Northern Arizona, 1969
MOST YARDS INTERCEPTIONS RETURNED
108, Rich Unruh vs. University of the Pacific, 1967
LONGEST TOUCHDOWN BY INTERCEPTION RETURN
56 yards, Rich Unruh vs. University of the Pacific, 1967

SCORING

MOST POINTS SCORED
18, seven times
MOST TOUCHDOWNS SCORED
3, seven times
MOST CONVERSION KICKS SCORED
7, Mick O'Neill vs. Portland State College, 1967
7, Dan Worrell vs. Portland State College, 1968
7, Dan Worrell vs. Northern Arizona, Portland State, South Dakota State, 1969
MOST FIELD GOALS MADE
3, Dan Worrell vs. South Dakota State, 1969
LONGEST FIELD GOAL MADE
50 yards, Dan Worrell vs. South Dakota State, 1969

Pre-game butterflies for John Waxham (21) and Doug Bain (81).



Single Season

RUSHING

MOST CARRIES
624, 1969

MOST NET YARDS
3,315, 1969

MOST TOUCHDOWNS RUSHING
29, 1969

HIGHEST AVERAGE PER CARRY
5.6 yards, 1954 (380 for 2,114 yards)

HIGHEST AVERAGE RUSHING YARDAGE PER GAME
234.9 yards, 1954

PASSING

MOST PASSES ATTEMPTED
215, 1968

MOST PASSES COMPLETED
105, 1949

HIGHEST COMPLETION PERCENTAGE
.500, 1949 (105 for 210)

HIGHEST AVERAGE PASSING YARDAGE PER GAME
154.6 yards, 1949

MOST PASSES HAD INTERCEPTED
22, 1948

FEWEST PASSES HAD INTERCEPTED
6, 1964

MOST TOUCHDOWN PASSES COMPLETED
15, 1969

TOTAL OFFENSE

MOST TOTAL PLAYS
772, 1969

MOST TOTAL YARDS
4,548, 1969

HIGHEST AVERAGE PER PLAY
5.9 yards, 1969 (772 for 4,548 yards)

HIGHEST AVERAGE PER GAME
454.8, 1969

FIRST DOWNS

MOST TOTAL FIRST DOWNS
205, 1969

MOST FIRST DOWNS RUSHING
160, 1969

MOST FIRST DOWNS PASSING
60, 1968

MOST FIRST DOWNS BY PENALTIES
17, 1968

PUNTING

MOST PUNTS
66, 1956

MOST TOTAL YARDS PUNTED
2,633, 1968

HIGHEST PUNTING AVERAGE
41.2 yards, 1968 (64 for 2,633 yards)

PUNT RETURNS

MOST PUNTS RETURNED
36, 1949; 36, 1969

MOST YARDS PUNTS RETURNED
450, 1949

BEST AVERAGE PER PUNT RETURN
17.9 yards, 1954 (12 for 215 yards)

KICKOFF RETURNS

MOST KICKOFFS RETURNED
48, 1955

MOST YARDS KICKOFFS RETURNED
939, 1955

BEST AVERAGE PER KICKOFF RETURN
21.6 yards, 1969 (29 for 626 yards)

SCORING

MOST POINTS SCORED
335, 1969

MOST TOUCHDOWNS SCORED
44, 1969

MOST CONVERSION KICKS SCORED
40, 1969

MOST FIELD GOALS SCORED
9, 1969

RUSH DEFENSE

FEWEST AVERAGE CARRIES ALLOWED
40.5 carries, 1969

LOWEST AVERAGE YIELD PER RUSH
2.7 yards, 1968 (431 for 1,184 yards)

FEWEST YARDS ALLOWED RUSHING
1,115, 1969

PASS DEFENSE

FEWEST ATTEMPTS ALLOWED
96, 1959

FEWEST COMPLETIONS ALLOWED
35, 1959

LOWEST PERCENTAGE ALLOWED ON COMPLETIONS
.362, 1960 (54 or 149)

FEWEST PASSING YARDS ALLOWED
415, 1959

FEWEST TOUCHDOWN PASSES ALLOWED
4, 1963

MOST PASSES INTERCEPTED BY
23, 1969

TOTAL DEFENSE

FEWEST AVERAGE TOTAL PLAYS ALLOWED
55.6, 1963

LOWEST AVERAGE YIELD PER PLAY
3.7 yards, 1969

FEWEST TOTAL YARDS ALLOWED
2,320, 1950

LOWEST AVERAGE TOTAL YARDS PER GAME
232.0, 1950

FIRST DOWNS

FEWEST TOTAL FIRST DOWNS ALLOWED
98, 1949

FEWEST FIRST DOWNS RUSHING ALLOWED
67, 1969

FEWEST FIRST DOWNS PASSING ALLOWED
14, 1959

FEWEST FIRST DOWNS BY PENALTIES ALLOWED
3, 1959 and 1964

RECOVERIES

MOST FUMBLES RECOVERED BY
23, 1948

MOST TOTAL RECOVERIES
(Including pass interceptions)
38, 1948, 1954 and 1956

Team Single Game

RUSHING

MOST CARRIES
78, vs. Portland State College, 1968

MOST NET YARDS
471, vs. Portland State College, 1968

MOST TOUCHDOWNS RUSHING
6, vs. Portland State College, 1967
6, vs. Portland State College, 1968
6, vs. South Dakota State College, 1969

HIGHEST AVERAGE PER CARRY
8.6 yards, University of North Dakota, 1948

PASSING

MOST PASSES ATTEMPTED
38, vs. University of Idaho, 1968

MOST PASSES COMPLETED
18, vs. Oregon State College, 1949

MOST YARDS BY PASSING
276, vs. Montana State College, 1950

MOST TOUCHDOWNS BY PASSING
4, vs. Eastern Washington State College, 1950
4, vs. University of Idaho, 1968

HIGHEST PERCENTAGE OF COMPLETIONS
.750 vs. Idaho State University, 1963

MOST PASSES HAD INTERCEPTED
6, vs. Utah State College, 1948

TOTAL OFFENSE

MOST TOTAL PLAYS
91, vs. University of Idaho, 1968
91, vs. South Dakota State, 1969

MOST TOTAL YARDS
649, vs. Portland State College, 1968

HIGHEST AVERAGE PER PLAY
9.9 yards, vs. University of North Dakota, 1948 (46 for 457 yards)

FIRST DOWNS

MOST TOTAL FIRST DOWNS
29, vs. Idaho, 1969

MOST FIRST DOWNS RUSHING
22, vs. South Dakota State, 1969

MOST FIRST DOWNS PASSING
12, vs. Montana State College, 1950

MOST FIRST DOWNS BY PENALTIES
5

PUNTING

MOST PUNTS
10

MOST YARDS PUNTED
443, vs. Utah State University, 1968

HIGHEST PUNTING AVERAGE
49.2 yards, vs. Northern Arizona, 1967

PUNT RETURNS

MOST PUNTS RETURNED
7, vs. South Dakota State, 1969

MOST YARDS PUNTS RETURNED
119, vs. University of North Dakota, 1968

KICKOFF RETURNS

MOST KICKOFF RETURNS
10, vs. Utah State University, 1968
10, vs. University of Idaho, 1968

MOST YARDS KICKOFFS RETURNED
224, vs. University of New Mexico, 1959

SCORING

MOST POINTS SCORED
58, vs. Portland State College, 1968
58, vs. South Dakota State, 1969

MOST TOUCHDOWNS SCORED
8, vs. Eastern Washington State College, 1950
8, vs. Portland State College, 1967
8, vs. Portland State College, 1968

MOST CONVERSION KICKS SCORED
7, vs. Portland State College, 1967
7, vs. Portland State College, 1968
7, vs. Portland State, Northern Arizona, South Dakota State, 1969

RUSH DEFENSE

FEWEST CARRIES ALLOWED
18, vs. University of British Columbia, 1963

FEWEST YARDS RUSHING ALLOWED
-1, vs. Northern Arizona University, 1968

FEWEST AVERAGE RUSHING YARDS ALLOWED
-.04, vs. Northern Arizona University, 1968

PASS DEFENSE

MOST OPPONENTS PASSES INTERCEPTED
5, vs. College of Puget Sound, 1950
5, vs. University of the Pacific, 1967
5, vs. Idaho State University, 1967

LOWEST COMPLETION PERCENTAGE
(Minimum 10 attempts)
.143, by Idaho State University, 1967 (2 for 14)

MOST YARDS INTERCEPTIONS RETURNED
108, vs. University of the Pacific, 1967

TOTAL DEFENSE

FEWEST TOTAL PLAYS ALLOWED
27, by University of British Columbia, 1963

FEWEST TOTAL YARDS ALLOWED
28, by Utah State College, 1950

LOWEST AVERAGE PER PLAY ALLOWED
.68, by Utah State College, 1950

RUSHING

MOST CAREER CARRIES
320, Terry Dillon (1960-62)
CAREER NET YARDS RUSHING
1,592, Dick Imer (2 years, 1953-54)

PASSING

MOST ATTEMPTS IN CAREER
333, Tom Kingsford (1948-50)
MOST CAREER COMPLETIONS
155, Tom Kingsford (1948-50)
MOST CAREER PASSING YARDS THROWN
2,296, Tom Kingsford (1948-50)
MOST CAREER TOUCHDOWNS THROWN
20, Ray Brum (1968-69)
MOST PASSES HAD INTERCEPTED DURING CAREER
25, Tom Kingsford (1948-50)

PASS RECEIVING

MOST CAREER PASSES CAUGHT
76, Ray Bauer (1948-50)
MOST CAREER YARDS BY PASS RECEIVING
1,250, Ray Bauer (1948-50)
MOST CAREER TOUCHDOWN PASSES CAUGHT
9, Ray Bauer (1948-50)

SCORING

MOST CAREER POINTS SCORED
113, Dan Worrell (1968-69)
MOST CAREER TOUCHDOWNS SCORED
17, Dick Imer (2 years, 1953-54)
MOST CAREER FIELD GOALS SCORED
17, Dan Worrell (1968-69)
MOST CAREER CONVERSION KICKS SCORED
62, Dan Worrell (1968-69)

UM All-Time Football Record

Year	Won	Lost	Tied	Pct.	Coach (Alma Mater)	Cumulative Record
1897	1	2	3	.166	Fred Smith (Cornell)	1-2-3, .166
1898	3	2	0	.600	Sgt. B. F. Searight (Stanford)	4-4-3, .364
1899	1	2	0	.333	Guy Cleveland (Montana)	5-6-3, .357
1900	0	1	0	.000	Frank Bean (Wisconsin)	5-7-3, .333
1901	2	2	0	.500	Frank Bean (Wisconsin)	7-9-3, .368
1902	0	2	0	.000	Dewitt Peck (Iowa State)	7-11-3, .333
1903	2	5	0	.285	H. B. Conibear (Illinois)	9-16-3, .321
1904	3	2	0	.600	H. B. Conibear (Illinois)	12-8-3, .364
1905	2	3	0	.400	F. W. Schule (Wisconsin)	14-21-3, .369
1906	2	4	0	.333	F. W. Schule (Wisconsin)	16-25-3, .364
1907	4	1	1	.667	Albion Findlay (Wisconsin)	20-26-4, .400
1908	1	2	1	.250	Roy White (Iowa)	21-28-5, .389
1909	6	0	1	.857	Roy White (Iowa)	27-28-6, .443
1910	3	2	1	.500	Robert Cary (Montana)	30-30-7, .448
1911	2	1	0	.667	Robert Cary (Montana)	32-31-7, .457
1912	4	3	0	.571	Lt. W. C. Philoon (Army)	36-34-7, .468
1913	2	4	0	.333	A. G. Heilman (Franklin & Marsh)	38-38-7, .458
1914	6	0	1	.857	A. G. Heilman (Franklin & Marsh)	44-38-8, .489
1915	2	2	2	.333	Jerry Nissen (Washington State)	46-40-10, .479
1916	4	1	1	.667	Jerry Nissen (Washington State)	50-41-11, .490
1917	1	4	0	.200	Jerry Nissen (Washington State)	51-45-11, .477
1919	2	3	2	.285	Bernie Bierman (Minnesota)	53-48-13, .465
1920	4	3	0	.571	Bernie Bierman (Minnesota)	57-51-13, .471
1921	3	3	1	.428	Bernie Bierman (Minnesota)	60-54-14, .469
1922	3	4	0	.428	J. W. Stewart (Geneva)	63-58-14, .467
1923	4	4	0	.500	J. W. Stewart (Geneva)	67-62-14, .468
1924	4	4	0	.500	Earl Clark (Montana)	71-66-14, .470
1925	3	4	1	.375	Earl Clark (Montana)	74-70-15, .465
1926	3	5	0	.375	Frank Milburn (West Point)	77-75-15, .461
1927	3	4	1	.375	Frank Milburn (West Point)	80-79-16, .457
1928	4	5	1	.400	Frank Milburn (West Point)	84-84-17, .454
1929	3	5	1	.333	Frank Milburn (West Point)	87-89-18, .448
1930	5	3	0	.625	Frank Milburn (West Point)	92-92-18, .455
1931	1	6	0	.166	Bernard Oakes (Illinois)	93-98-18, .445
1932	2	7	0	.222	Bernard Oakes (Illinois)	95-105-18, .436
1933	3	4	0	.428	Bernard Oakes (Illinois)	98-109-18, .436
1934	2	5	1	.250	Bernard Oakes (Illinois)	100-114-19, .429
1935	1	5	2	.125	Doug Fessenden (Illinois)	101-119-21, .419
1936	6	3	0	.667	Doug Fessenden (Illinois)	107-122-21, .428
1937	7	1	0	.875	Doug Fessenden (Illinois)	114-123-21, .442
1938	5	3	1	.555	Doug Fessenden (Illinois)	119-126-22, .447
1939	3	6	0	.333	Doug Fessenden (Illinois)	122-132-22, .442
1940	4	4	1	.444	Doug Fessenden (Illinois)	126-136-23, .443
1941	6	3	0	.667	Doug Fessenden (Illinois)	132-139-23, .449
1942	0	8	0	.000	Clyde Carpenter (Montana)	132-147-23, .438
1945	1	4	0	.200	George Dahlberg (Montana)	133-151-23, .434
1946	4	4	0	.500	Doug Fessenden (Illinois)	137-155-23, .435
1947	7	4	0	.636	Doug Fessenden (Illinois)	144-149-23, .442
1948	3	7	0	.300	Doug Fessenden (Illinois)	147-166-23, .436
1949	5	4	0	.556	Ted Shipkey (Stanford)	152-170-23, .441
1950	5	5	0	.500	Ted Shipkey (Stanford)	157-175-23, .442
1951	2	7	0	.222	Ted Shipkey (Stanford)	159-182-23, .437
1952	2	7	1	.200	Ed Chinske (Montana)	161-189-24, .431
1953	3	5	0	.375	Ed Chinske (Montana)	164-194-24, .430
1954	3	6	0	.333	Ed Chinske (Montana)	167-200-24, .423
1955	3	7	0	.300	Jerry Williams (Washington State)	170-207-24, .424
1956	1	9	0	.100	Jerry Williams (Washington State)	171-216-24, .417
1957	2	7	0	.222	Jerry Williams (Washington State)	173-223-24, .412
1958	0	10	0	.000	Ray Jenkins (Colorado)	173-233-24, .403
1959	1	8	0	.111	Ray Jenkins (Colorado)	174-241-24, .397
1960	5	5	0	.500	Ray Jenkins (Colorado)	179-246-24, .399
1961	2	6	0	.250	Ray Jenkins (Colorado)	181-252-24, .396
1962	5	5	0	.500	Ray Jenkins (Colorado)	186-257-24, .399
1963	1	9	0	.100	Ray Jenkins (Colorado)	187-266-24, .392
1964	3	6	0	.333	Hugh Davidson (Colorado)	190-272-24, .392
1965	4	6	0	.400	Hugh Davidson (Colorado)	194-278-24, .392
1966	1	8	0	.111	Hugh Davidson (Colorado)	195-286-24, .386
1967	7	3	0	.700	Jack Swarthout (Montana)	202-289-24, .392
1968	2	7	0	.222	Jack Swarthout (Montana)	204-296-24, .389
1969	10	0	0	1.000	Jack Swarthout (Montana)	214-296-24, .401

Fighting Grizzly Marching Band

Montana's snappy 75-piece marching band has developed into one of the sharpest and most entertaining bands in the Northwest. The band performs at every home game presenting pre-game, halftime and post game shows. The Tip unit also travels to either Bozeman for the UM-MSU rivalry or to Moscow for the Montana-Idaho clash. Last fall the band accompanied the Grizzlies to the Camellia Bowl in Sacramento and drew wide acclaim for the outstanding performance. The assistant band director this year is Lance Boyd, now a UM music instructor.



Band Director, Butler R. Eitel, came to the University of Montana in 1967 from Macalester College, St. Paul, Minn., where he was conductor of the band and orchestra. He also has been band conductor at MacPhail College, Minneapolis, assistant band conductor at the universities of Minnesota and Maryland and with the United States Air Force Band. Eitel is a graduate of the University of Michigan School of Music and received his Masters of Music from MacPhail College.



1970 Cheerleaders

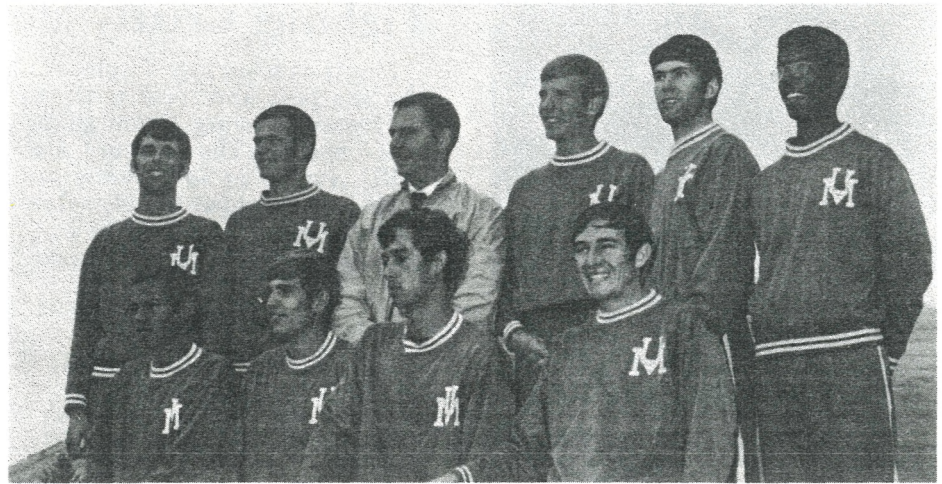


Montana's cheerleader homecoming queen Clarene Hornung.



Leading the Tip cheers are (left to right, bottom row) Susan Gail Sullivan, Whitehall; Marcia Lee Delano, Missoula; Sharon Lee Corning, Billings and Barbara Jean Wemper, Billings. Pictured in the top row are the Morgan sisters of Helena, Deborah on the left and Robin on the right.

Left to right (bottom row): Ray Velez, Boyd Collins, Bob Makemes, and Wade Jacobsen. (Top row): Tim O'Hare, Howard Johnson, Coach Harley Lewis, Dick Miller, Ray Ballew and George Cook.



1969 Big Sky Cross Country Champs

For Coach Harley Lewis, the 1969 Big Sky cross country championship was the second during his four years as UM track and cross country coach. Lewis's team also won the 1967 cross country title. Not only did the Lewismen walk off with top team honors, but Grizzly runners swept the first three places and the lowest ranking Tip runner placed 20th in the 40-man field.

Wade Jacobsen, the Simms junior, successfully defended his 1968 championship covering the course in 20:46.0. The Moscow, Ida. course was more than four miles long. Senior Ray Velez, San Bernardino, Calif., captured second place and freshman George Cook, Highland Falls, N.Y., took third.

Prospects for the 1970 season look good for the Grizzlies. Lewis loses only Ray Velez from the championship team and has gained three high school seniors who have indicated they will attend the University of Montana.

Lewis has Jacobsen, Cook, Tim O'Hare, Howard Johnson, Bob Makemes and Ray Ballew back from the championship squad along with Boyd Collins. These men will have their work cut out for them as Northern Arizona, which officially enters the Big Sky Conference with Boise State in 1970, has a crop of excellent distance runners. Along with NAU is perennial title contender, Idaho State.

The Lumberjacks have six-miler Richard Sliney who captured second in the NAIA six mile in 1970 and Richard Shelby, the second place finisher in the NAIA mile competition last year. Both are sophomores.

Idaho State has Tony Rodriguez and Nelson Karagu returning and have a host of fine freshmen competing, while Montana State has Jim Robbins back and Weber has Brian Hanson.

1970 SCHEDULE

*Oct. 3	WSU Invitational	Pullman
Oct. 10	Idaho	Moscow
Oct. 17	Idaho State	Pocatello
Oct. 24	Central Wash.	Ellensburg
Oct. 31	Portland State	Missoula
Nov. 14	Big Sky Meet	Missoula
Nov. 7	Montana State	Bozeman

*Denotes tentative meet scheduled at time of printing.

1969 TOP TEN AT BIG SKY MEET

1.	Wade Jacobsen	Montana	20:46.0
2.	*Ray Velez	Montana	21:07.8
3.	George Cook	Montana	21:17
4.	*John Hayes	Mont. St.	21:19
5.	Tony Rodriguez	Ida. St.	21:21
6.	Jim Robbins	Mont. St.	21:23
7.	*Joe McNeese	Ida. St.	21:32
8.	Nelson Karagu	Ida. St.	21:35
9.	Bob Hamilton	Idaho	21:36
10.	Tim O'Hare	Montana	21:39

*Graduated

TEAM SCORES

MONTANA	28
Idaho State	49
Montana State	73
Idaho	97
Weber	130
Gonzaga	169

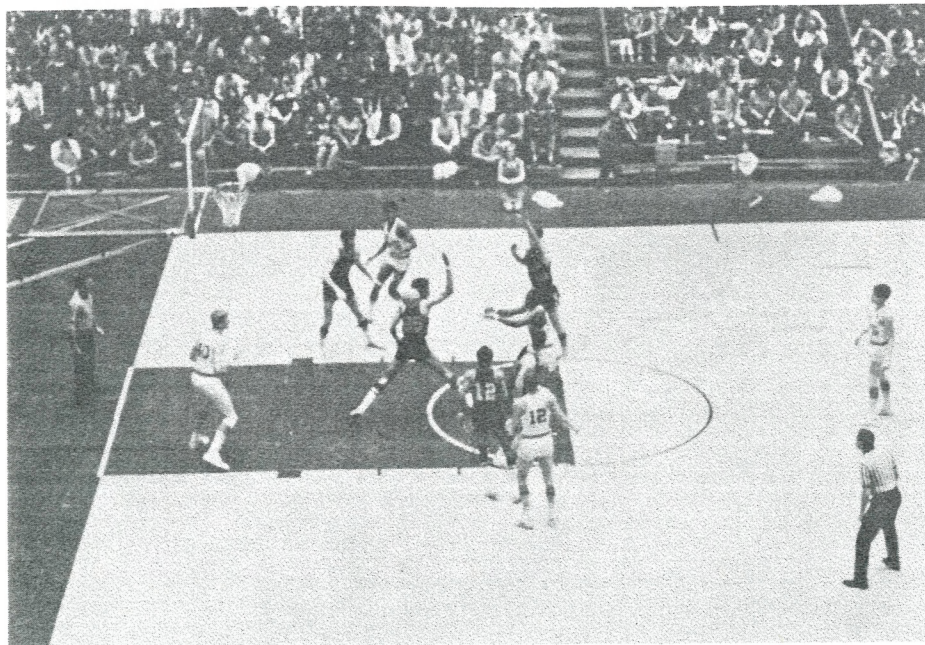
Other Montana Finishers

12.	Howard Johnson	21:55
17.	Bob Malkemes	22:21
20.	Ray Ballew	22:46

1969 Meet Results

Conference (4-0)
MONTANA 15, Weber 50
MONTANA 26, Idaho State 29
MONTANA 17, Montana State 45
1st place Big Sky Meet
Non-conference (1-1)
Montana Invitational
1. MONTANA
2. University of Idaho
3. Eastern Washington

Hard court action in the Harry Adams Field House.

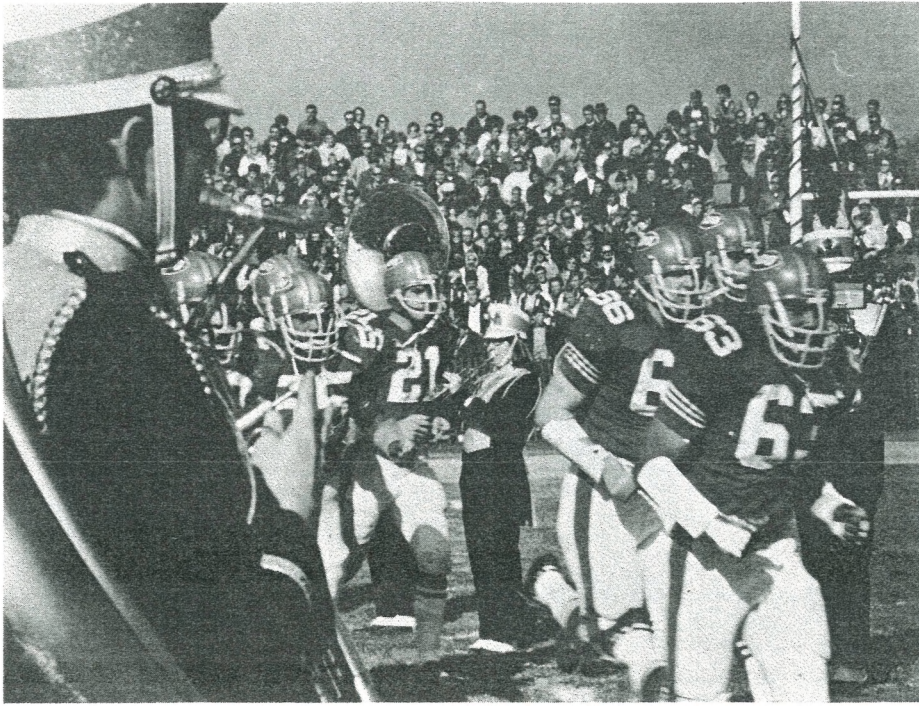


Coach Lou Rocheleau

Grizzly Basketball

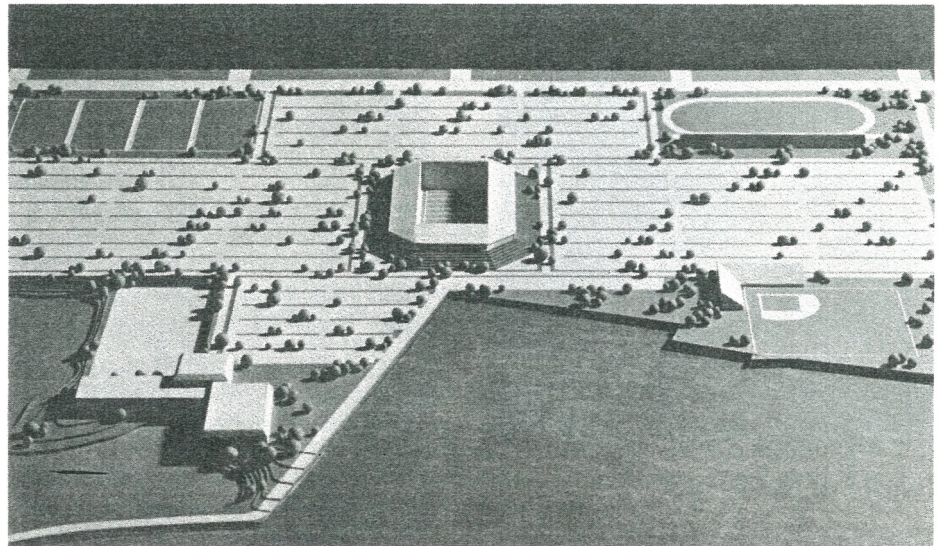
Date	Opponent	Place
Dec. 1	Augustana	Sioux Falls
Dec. 2	University of South Dakota	Vermillion
Dec. 7	Washington State University	Pullman
Dec. 12	University of Washington	Seattle
Dec. 14	Washington State University	Missoula
Dec. 16	Colorado State College	Missoula
Jan. 2	*Weber State College	Ogden
Jan. 4	*Northern Arizona	Flagstaff
Jan. 7	*Montana State University	Bozeman
Jan. 9	University of Puget Sound	Missoula
Jan. 16	*Gonzaga	Spokane
Jan. 18	*Idaho	Moscow
Jan. 21	Athletes in Action	Missoula
Jan. 23	*Montana State University	Bozeman
Jan. 25	Oral Roberts	Missoula
Jan. 29	University of Puget Sound	Tacoma
Jan. 30	Portland State University	Portland
Feb. 6	*Gonzaga	Missoula
Feb. 8	*Idaho	Missoula
Feb. 13	*Boise State College	Boise
Feb. 15	*Idaho State University	Pocatello
Feb. 20	*Boise State College	Missoula
Feb. 22	*Idaho State University	Missoula
Feb. 27	*Weber State College	Missoula
March 1	*Northern Arizona	Missoula

*Conference games.



Here come the Grizzlies . . .

Sports Complex



GIANT NEW SPORTS COMPLEX FOR MONTANA

A giant new multi-million dollar sports complex is in the planning stages at the University of Montana. It is estimated that the complex will cost anywhere from \$2 to \$8 million and will be the future home of University of Montana Grizzly football.

A football stadium is only a small part of this 35-acre expansion. However, it is planned that the football area will seat about 20,000 fans and contain a tartan all-weather turf.

Also contained in the plans for the sports addition are tennis courts, a baseball park, a track with an all-weather oval, a swimming complex, an ice arena with a regulation hockey rink and a 14-acre fresh water impoundment for research projects.

The complex also is designed as a recreation area. A park will surround the lake, and townspeople as well as students will be able to enjoy the facility.

Press Information

FOOTBALL COACHES



Dr. Earl Lory

Head Coach Jack Swarthout (Ext. 5331)
 1st Assistant (Defensive Secondary) Jack Elway, (5331)
 Assistant (Defensive Interior Line) Charley Armev (5331)
 Assistant (Offensive Interior Line) Bill Betcher (5331)
 Assistant (Ends, Linebackers) Ron Nord (5331)

OTHER ATHLETIC PERSONNEL



Naseby Rhinehart

Athletic Director Jack Swarthout (5331)
 Faculty Representative Dr. Earl Lory (4022)
 Business Manager Earl Martell (4051)
 Ticket Manager Gary Hughes (4051)
 Team Physician Dr. Robert Curry (2122)
 Athletic Trainer Naseby Rhinehart (2652)
 Equipment Manager Rupert Holland (4351)
 Athletic Secretary Mrs. Cela Burham (5331)
 Track, Cross Country Coach Harley Lewis (5331)
 Head Basketball Coach Lou Rocheleau (5331)
 Assistant Basketball Coach Jim Brandenburg (5331)
 Swimming Coach Fred Stetson (5331 or 2763)
 Golf Coach Ron Nord (5331)
 Sports Information Director Don Brunell (2522)



Earl Martell

MISSOULA OUTLETS

Sports Editor, **The Missoulian**
 Sports Editor, University of Montana **Kaimin**
 Sports Director, **KGVO** Radio-TV
 Sports Director, **KYSS** Radio
 Sports Director, **KGMV** Radio
 Sports Director, **KYLT** Radio
 Sports Director, University **KUFM (FM)** Radio

OTHER MONTANA OUTLETS

Sports Editor, **The Gazette**, Billings 59101
 Sports Editor, **The Chronicle**, Bozeman 59715
 Sports Editor, **The Standard**, Butte 59701
 Sports Editor, **The Tribune-Examiner**, Dillon 59725
 Sports Editor, **The Tribune**, Great Falls 59401
 Sports Editor, **The Ravalli Republican**, Hamilton 59840
 Sports Editor, **The News**, Havre 59501
 Sports Editor, **The Independent-Record**, Helena 59601
 Sports Editor, **The Inter Lake**, Kalispell 59901
 Sports Editor, **The News**, Lewistown 59457
 Sports Editor, **The Enterprise**, Livingston 59047
 Sports Editor, **The Star**, Miles City 59301
 Sports Desk, **Associated Press**, Helena 59601
 Sports Desk, **United Press International**, Helena 59601



Don Brunell

PRESS PASSES

Requests for press passes should be filed with the sports information director as soon as possible, because space will be limited and assigned on a first-come, first-served basis this fall. Only those carrying a specially-marked pass will be admitted to the press box, and for working purposes only, unless a guest in the President's box.



Dr. Robert Curry

BROADCASTING BOOTHS

There will be two radio booths available, with one reserved for KUFM (FM) from the University of Montana, and another for that visiting station designated as the visiting team's official radio outlet.

SERVICES

Game statistics, including complete play-by-play, scoring and yardage reports, will be supplied at halftime and at the game's end by the sports information director and his statistics crew.



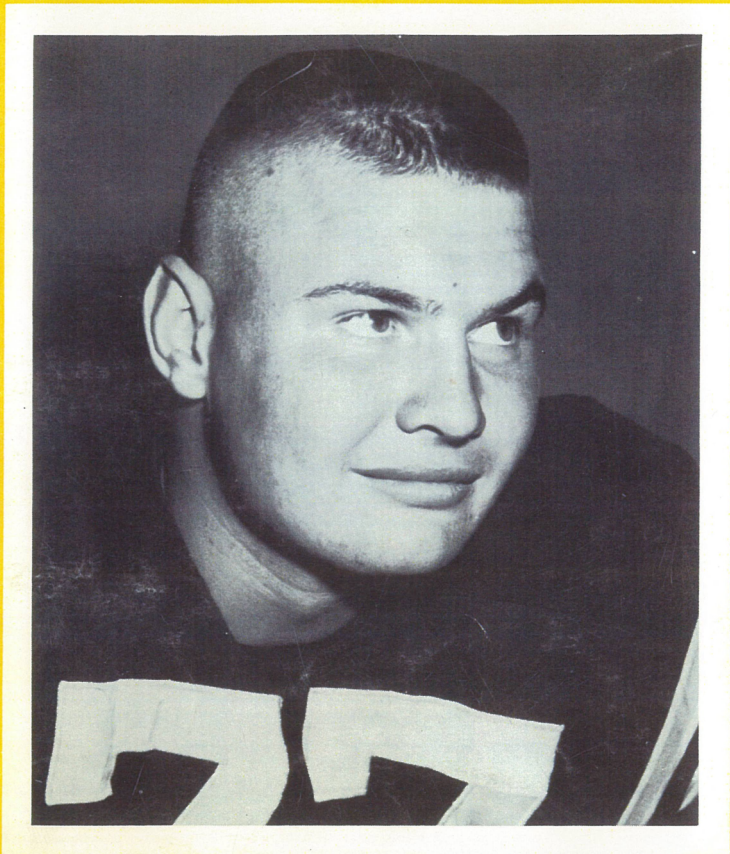
Gary Hughes

SIDELINE PASSES

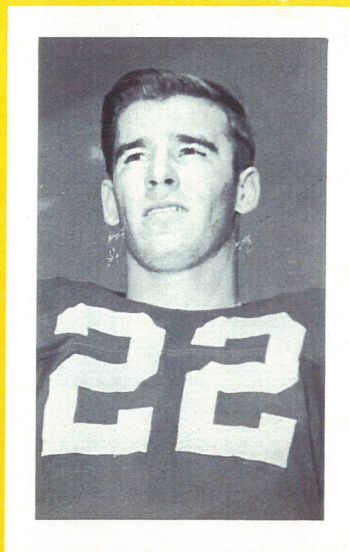
Photographers who request sideline passes are subject to a deadline of one week prior to game time. Requests submitted after that time will be honored only in special cases by the judgment of the sports information director.

UNIFORMS

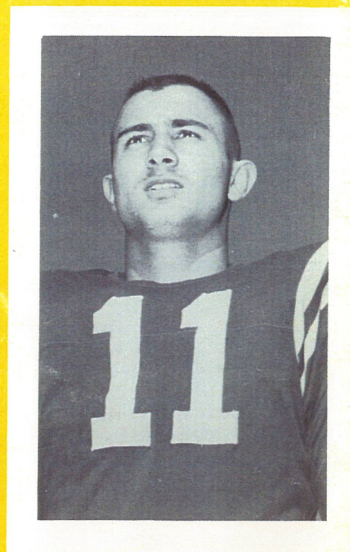
Montana will wear dark jerseys with white pants and numbers at home and all white uniforms with easily-visible copper numbers on the road.



Mike Tilleman—starting tackle for New Orleans Saints.



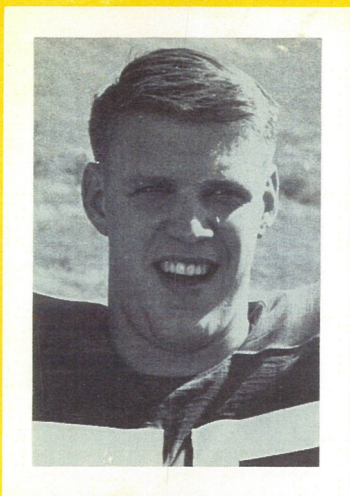
Terry Dillon—starter for Minnesota Vikings at defensive back.



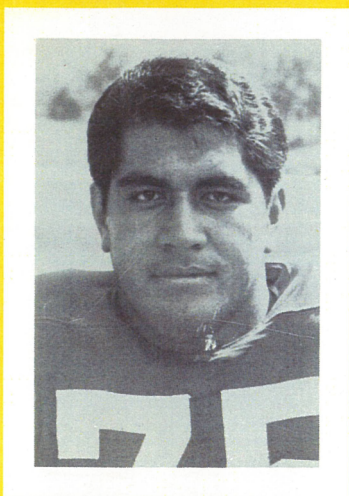
Bob O'Billovich — Canadian All-Pro defensive back for Ottawa Roughriders.

Some Montana pros
who made the starting
lineups in the 60's

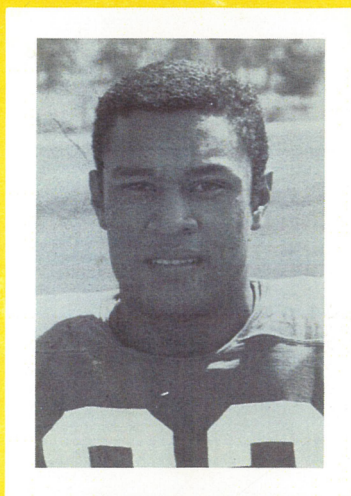
Players from the 1969 team who had pro bids



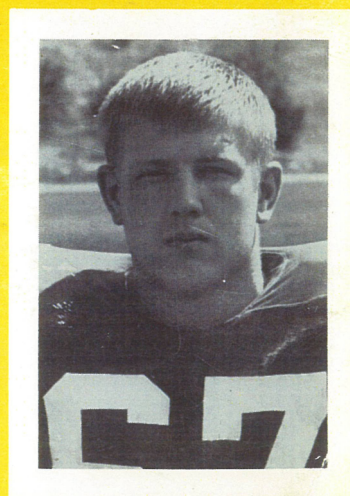
Dave Uzie — free agent with Philadelphia Eagles as a center.



Tuufuli Uperesa—drafted by Philadelphia Eagles as a tackle.



Roy Robinson—drafted by Atlanta Falcons as defensive back.



John Stedham—free agent with Calgary Stampeders as guard.