

1-1-1959

Associated Women Students Handbook, 1959-1960

University of Montana--Missoula. Associated Women Students

Let us know how access to this document benefits you.

Follow this and additional works at: https://scholarworks.umt.edu/aws_handbook

Recommended Citation

University of Montana--Missoula. Associated Women Students, "Associated Women Students Handbook, 1959-1960" (1959).
Associated Women Students Handbooks, 1919-1963. 19.
https://scholarworks.umt.edu/aws_handbook/19

This Handbook is brought to you for free and open access by the University of Montana Publications at ScholarWorks at University of Montana. It has been accepted for inclusion in Associated Women Students Handbooks, 1919-1963 by an authorized administrator of ScholarWorks at University of Montana. For more information, please contact scholarworks@mso.umt.edu.

It's

a

Woman's

World . . .

Official Handbook

1959-1960

Associated Women Students

WOMEN'S CREED

- . . . I believe in college women; in their ideals and sincerity of purpose.
- . . . Because I am one of them I will strive to be open-minded and charitable.
- . . . I will be honest with myself. For then it follows that I will be honest in my class work and with other people.
- . . . I will support the activities of my College in the spirit of service.
- . . . I will remember that I am here primarily to study and to learn to think.
- . . . I will take time for friendships and pleasure in simple things.
- . . . I will broaden my sympathy and interests to include the life which is outside the campus.
- . . . Above all I will make my standards such that I should be willing to have every woman on the campus adopt them as hers.

YOUR AWS GUIDE

Official Handbook for Women

of

Montana State University

Committee

Co-Chairmen:

Ellen Parker and Mary Lou Montague

Grace Gould

Kay Ashall

Sarah Rankin

Diane Boehler

Norma Collins

Elma Knowlton

Martha Comer

Laurie Freseman

Penny Loucas

Janet Brandt

Cheryl Nevin

Ellen Devaney

Shirley Warehime

Published by
ASSOCIATED WOMEN STUDENTS
1959-60

TABLE OF CONTENTS

- What Is AWS?
- How Is AWS Organized?
- AWS Calendar of Events
- Need Some Money?
- Now What Do I Do?
- What's Gone Before?
- How Can I Be a Real Co-ed?
- Would You Like An Activity?
- How's Your Studies?
- What Are The Rewards?
- Rules and Regulations
- Relationship to Judicial Council
- Constitution

HI

THERE



What Is AWS?

AWS—these three letters stand for a great part of Montana State University life. ASSOCIATED WOMEN STUDENTS is an organization to which every woman automatically belongs once she registers here. Its purposes are many, and each one is a benefit to the members.

AWS is an age-old campus tradition. Beginning in 1914 as the "Women's League," it has had an active history. Since then the group has grown up, changed, and developed into a governing body "of the women, by the women, and for the women" of MSU. Today the representatives from all women's residences, composing the Executive Board, have a high degree of responsibility. This board, together with the four elected officers, formulate and carry out the several policies the women of MSU want and feel are necessary to maintain the high standards they are so proud of at MSU. The Executive Board also organizes and supervises the many activities AWS sponsors. You will be urged to aid them by your active participation in AWS activities, your attendance at AWS events, and your contributions of effort, energy and ideas for improving your organization and campus. Throughout the year AWS carries out a program designed to unify women attending MSU, to give more leadership opportunities for women, to work for better student government, and to foster school spirit. Remember—**You are AWS**—its sole justification for existence and only means of functioning beneficially. Take part in making **your** organization even better.



Meet Our Advisor . . .



Welcome to Montana State University and to membership in AWS. University life is a new experience and one which should be both stimulating and inspirational for you. AWS has prepared this booklet as a guide for your campus life. I shall be happy to assist you at any time, and am looking forward to knowing personally each one of you.

MAURINE CLOW,
Associate Dean of Students

Meet Our Officers . . .



Karen Ferkin, treasurer; Jackie Thomas, vice-president;
Sally Harris, president; Donna Arnst, secretary.

Hi!

On behalf of the Associated Women Students I would like to extend our welcome to you as you enter Montana State University. We are so glad that you have chosen our University and we hope you will find your college days here very rewarding.

You undoubtedly have many questions about campus life. We have anticipated some of your questions and hope this booklet will answer them. However, we realize that no amount of printed material can cover all aspects of college life. I would like to extend an invitation to you to call on any of your AWS officers to answer further questions or to assist you in any way we can.

We are looking forward to meeting you next fall and working with you in your organization—AWS.

SALLY HARRIS
President, A.W.S.

How Is It Organized?

I A W S

The Intercollegiate Association of Women Students is the national organization of college women to which your AWS belongs. This group, composed of AWS's throughout the United States, functions to solve problems common to all collegiate women and correlates the many ideas supplied by its members so that each local AWS can apply these suggestions to their individual campus needs. A major part of this exchange of ideas comes at the National and Regional Conventions held on alternate years. Your AWS always sends delegates to these gatherings. Between conventions IAWS carries on an active Clearing House program in which each of its four regions are supplied with centers of information, so any individual school can secure from one source materials compiled from all schools on a particular phase of AWS work. Currently MSU is the Public Relations Clearing House for Region I of AWS, and this committee carries on an important function both for our own AWS and also national IAWS.

A W S

Associated Women Students—your campus government—is composed of an Executive Board, a Judicial Board, five committees, and you.

The Executive Board is composed of the officers of AWS and a representative from each women's living group. This board meets every Monday afternoon at 4 p.m. to plan activities and to serve as your representative student government.

Judicial Board considers all infractions of hour regulations and is composed of the AWS officers and two roving representatives from the Executive Board. The council meets at 3:30 p.m. Monday with the vice-president presiding.

Publicity Committee notifies women students of AWS events and makes posters and signs for all AWS activities.

Big-Little Sister Committee plans the Big-Little Sister program, including the party during Orientation week and other activities planned throughout the year. Its goal is to help all new women students feel a part part of MSU campus life.

Handbook Committee publishes and distributes this handbook to all new MSU Co-eds. The following March this committee works with the AWS board in making revisions and corrections for the new committee.

Special Activities Committee is the organizing group for all AWS activities during the year. It is primarily designed for those girls wanting to help with AWS work, but who want to concentrate their help at one period during the year. The chairman of this committee attends regular AWS board meetings and acts as co-ordinator for all these activities. Under this committee the following sub-committees can be applied for:

- Snow Weekend.
- Interscholastic.
- Style Shows.
- Hallowe'en Dance.
- Miss Montana Pageant.
- Lantern Parade.

Public Relations Committee is incorporated into the IAWS Clearing House which serves Region 1 in this area. This committee sponsors activities which will establish better relations between AWS, the faculty, administration and community of Missoula.

One of the best ways to be active in AWS and campus life is as a member of one of these committees. Applications are circulated every fall, and all women are invited to apply.

AWS Calendar of Events



Fall Quarter

- Big-Little Sister program during Orientation Week.
- AWS-Mortar Board Tea.
- AWS-Mercantile Style Show.
- Hallowe'en Dance.
- Meeting with Foreign Students.

Winter Quarter

- Snow Weekend.
- Election of Officers.
- Regional or National IAWS convention.
- Big-Little Sister Program.

Spring Quarter

- Miss Montana Pageant.
- Interscholastic Weekend
- Lantern Parade.
- AWS Scholarship awarded.
- State AWS convention.
- Spring Style Show.
- Executive Board picnic.

Need Some Money? \$\$

AWS Loan Fund

The AWS Loan Fund, instituted in 1923 at MSU, was established to provide financial aid to women students. Any girl may borrow from the fund. The loan is approved by the AWS President and the Associate Dean of Students. There is over \$2,000 in this fund and any amount up to \$200 may be borrowed at 2% interest. The rate at which this money is paid back, i.e., monthly, quarterly, etc., depends upon the individual case.

AWS Scholarship

AWS offers the Cheadle-McKinley Memorial Scholarship of \$75 to an outstanding sophomore woman each spring. Any sophomore woman is eligible. The choice of the application is made by a scholarship committee composed of the Associate Dean of Students, the President of AWS, a faculty member, and a member of the Executive Board.

This scholarship was first awarded in 1955 and is presented in memory of Jane Cheadle and Marlene McKinley, outstanding students who have died within the last ten years.

Now What Do I Do?

Why College?

To have the opportunity to make something of yourself?

To obtain a career that will support you in the years to come?

Because you realize that education is of high value for you now and in future years.

Because you know that at a university such as MSU you will be associated with people possessing ideas, personalities, and cultures that may prove worthwhile to you?

Or perhaps you came just to find a man and settle down.

Whatever your reason or reasons, no matter how they may change in the course of your stay here, only you will ever know if your reasons for coming were, in the end, fulfilled. It is left entirely up to you to gain and profit from what is offered at Montana State University.

What Are the Buildings?

The campus at MSU is a mixture of new and old. **Main Hall**, built in 1897, is the center for the administration. Inside this building you will find various offices and departmental divisions for the President, Dean of Students, Business Office, Registrar, Public Service Division and the Graduate School office.

Of special interest to both old and new students are:
1. The Dean of Students office where the **Associate Dean of Students** (more com-



monly called the Dean of Women) can be found. Her office is always open to university students and she is ready to aid and offer guidance concerning campus life, both social and academic. You'll find her a big help with any problems and a real friend to get to know.

2. The **Counselling Center**, located in Jumbo Hall, helps you to decide about your major field and for what courses of study you are best adapted.

In addition to this counseling service, an **advisor**, usually a professor in your field of study, will be assigned to you before registration. For as long as you attend MSU this advisor will be on hand to aid you in the selection and planning of your course of study.

The **University Health Service** is maintained on campus in order to safeguard the health of the students and to furnish medical service and nursing care to those who become ill or injured during the school term. Our modern Health Center, completed in the spring of 1956, provides a restful place for all who require its services. Health fees, paid at the time of registration each quarter, entitle you to the privileges of this Health Center—but remember, good health results not only in better grades, but also more fun—so eat that apple a day!

The place to hit those books—the **Library** will be your best friend on campus. It is the ideal place for most of your studying and research work. If it's a bit confusing at first to learn how the library "works," just ask, for able librarians and student assistants are always on hand to direct you to that book which is somewhere among the open stacks on the four floors.

The newly completed **Lodge** serves the dual role as a **Student Union** and **Food Center**. In its function as a Student Union, the Lodge serves as a recreational and meeting center for all campus students and activities. The **Grill**, located in the basement, takes care

of coffee crowd and those between class snacks. Offices and council rooms for meetings are found on the second floor. Here also is the AWS office which houses the files and materials for AWS work. The Yellowstone and Cascade Rooms, used for banquets and dances, are available for all student groups. The student **Bookstore**, in the west wing of this building, sells and exchanges books and materials for all your school work. The **College Inn** found under the Grill, has all the atmosphere of college life and is the meeting place for Saturday afternoon jam sessions. All students residing in dorms, both girls and boys, eat their meals at the Lodge. The spacious modern food center in the new west wing is equipped with the latest cafeteria equipment for your good eating pleasure. Definite schedules of meal hours are posted in all dorms.

Where Do I Stay?

Housing facilities for on-campus women include four residence halls: **Brantly, Corbin** and **North Corbin** for freshmen and **Turner Hall** for upperclass women. These dorms are under the supervision of head residents. In the freshman dorms, besides the house mothers, there are Junior Sponsors (junior women students) ready to help at any time. These juniors give pointers on such things as government of the dorm, study habits, social life and quickly become one of your best friends.

If you prefer to live in a co-op, the **Synadelphic House** is open to all women students, whether freshmen or upperclassmen. Here expenses and housework are shared, as well as all the fun. Also, many of you will probably pledge one of the six social sororities, but freshman pledges are required to live in the dorm. You may move into your sorority house when you are a sophomore.

Wherever you decide to live while attending the University, you will find yourself a part of an

organized social unit. This process of group living which comes as a new experience in your life will not only prove profitable in later years, but be a lot of fun right now too. Missoula girls living at home may enjoy the halls' social activities by paying a small fee to be a full-fledged dorm affiliate.

What About Missoula?

Missoula—your home away from home—has an exciting history. As a pioneer stop-off and Indian settlement known as "Hellgate," it was once a rip-roaring western community. Today Missoula, "The Garden City," is a busy little city at the crossroads of five great valleys. Situated on the main thoroughfare of Western Montana, it is the center of traffic between Montana and Idaho.

Missoula is an Indian name meaning "near the cold, chilling waters," not particularly because of the coldness of the water, but because of the fear of the Flathead for the spot where warring Blackfeet once ambushed them. The river which divides the city is called the Missoula. North of town at Bonner the same river is called the Blackfoot, and to the south it is called the Bitterroot, named for the area through which it flows. To the east and west this same river is known as the Clark's Fork of the Columbia.



Missoula residents are happy to be able to supply University students with plenty of recreation facilities, outdoor as well as indoor. Besides the seven theaters, there are numerous city parks, tennis courts, picnic areas, horseback riding academies, two bowling alleys, a roller-skating rink, and miniature golf links. A variety of dating activities are available in Missoula, one of the nicest being the fine eating

places throughout town. The campus offers a bowling alley, located in the women's center; the Glacier ice-skating rink, which operates all the year round; the brand new University swimming pool, and the 18-hole golf course, 8 blocks south of campus. For Skiers there is Snow Park, Diamond Mountain, Lost Trail, Marshall Canyon, and Big Mountain at Whitefish—all within easy reach of MSU students. Lolo, Sleeping Child, Gollogly, and Medicine Hot Springs make swimming excursions popular in the spring and fall. Hikers will find that a walk up Mount Sentinel to the **M** occupies a good afternoon.

Missoula's major industries include lumber mills, construction companies, meat-packing plants, and a sugar beet factory. The regional headquarters of the U.S. and State Forest Services are also located here.

The Community Concert Association holds a series of concerts on campus for Missoulians and students each year and the Music School offers the Little Concert Series, so bring your ticket money and you will enjoy good music all year.

The Missoula Chamber of Commerce is always ready to help with an answer to all questions. You will find it an easy task to obtain comfortable lodgings for your parents when they come to visit. If you are mystified by all the foreign words you hear—Pattee Canyon, Hellgate Canyon, the Rattlesnake, Mount Jumbo and Sentinel—just look to the nearest upper-classman for translation and directions, and soon you, too, will have mastered them!

THROUGH
THE
YEARS



What's Gone Before?

MSU has many customs and annual happenings—we call them **traditions**—that make college life dear to all of us. These events, proudly observed by all true Grizzlies, leave fond memories of college life that we never forget.

Just For the Cub . . .

The first tradition an incoming Grizzly cub meets is **Orientation Week**—a time of making friends, having fun, getting acquainted with the campus, and incidentally, taking tests. AWS helps cubs tremendously in this baffling week of transition. One of the first nights at the "U" is planned by AWS for a get-acquainted party for big and little sisters who have been writing to one another all summer. Campus organization prexies and representatives tell all about life on campus and inform the new students about honoraries and places to use their talent at school.

The second Sunday away from home, AWS, in conjunction with Spur and Mortar Board, plans a tea to give homesick cubs a chance to get away from all those thoughts of home. AWS big sisters take their little sisters and help them meet the other frosh and upperclasswomen.

All frosh scramble up Mt. Sentinel some afternoon of the week and participate in "**Painting the "M."**" Many buckets of whitewash cover the "M," but somehow manages to cover the co-eds and fellas also. Spurs and Bear Paws are on hand to guide the activity and give out refreshments to the hard-working frosh when it is all done. All during the week freshmen will be identified by their **Frosh Beanies**, which are worn at all times and serve as the ad-



mission fee to the "Beanie Bounce," a dance also sponsored by Spurs and Bear Paws, and which climaxes the week's activities.—You will become inseparable with this beanie!

There are other varied activities throughout this week to get you into the swing of things. Dances are held at the Lodge, Jitney parties, dorm pajama parties, Stunt Night and a picnic sponsored by student religious groups round out a full week of fun.

Every fall the freshmen are responsible for keeping the **Victory Bell** shining and ready to ring out at football triumphs. The freshmen do this through their own newly organized **Grizzly Growlers**, composed entirely of freshmen.

Traditions for All of Us . . .

Homecoming, the weekend honoring alums, boasts a football game, a homecoming queen, and a big parade with floats sponsored by all houses and dorms. A **Bonfire** (freshmen sponsored) on Friday night climaxes a big Grizzly pep rally.

The **Bobcat-Grizzly Game**, (usually won by MSU) is played in Bozeman and Missoula on alternate years and is the high spot for rivalry between MSU and MSC. A traveling trophy is presented to the captain of the winning team. This game is the cause of mass migration from one school to the other.

All dads are honored at a football game on **Dad's Day**. The dad coming the furthest for the occasion and the oldest dad are given awards.



Hello Walk is the sidewalk dedicated to friendship where traditionally everybody greets everybody else with a friendly hello or "hi." It is the section of sidewalk between the Fine Arts building and the west entrance of the Liberal Arts Building.

Annual Affairs . . .

Some of the important social traditions on campus are the **Foresters Ball**, given by the woodsmen in Paul Bunyan's honor; the **Barristers Ball** where the lawyers fete J. Learned Brow; the **Nite Club Dance**, presented by the music school in a night clubbish atmosphere with a good floor show; the **Military Ball**, sponsored by the ROTC unit; and **Sadie Hawkins**, the dance that the Spurs give so that every Daisy Mae on campus can catch her man.

At Main Hall . . .

Singing on the Steps, or **SOS**, is one of the most beloved of all MSU traditions. The songs, led by the Spurs and Bear Paws, are perfected and form the background for many events, one of them the tapping of members for honoraries. SOS starts promptly at 7:30 p.m., and at the striking of eight everyone is silent until the eighth gong is heard. Then the students begin to sing softly the song, "Old College Chums" and walk away humming it—leaving a happy and friendly note hovering around the spires of Main Hall, the heart of MSU traditions.

In the Spring . . .

Interscholastic is the weekend when Montana High school students gather at MSU to compete in athletic events, speech, dramatics, and journalism. Everyone tries to show them a good time and give them a taste of university life. Mortar Board, Spurs, and Silent Sentinel tap their new members at the SOS, the university sponsors an **All School Variety Show** at which a barbeque is served, and Newman Club organizes the **Song Fest**.

At the annual **Sig Alph Olympics** each women's Living group gets a chance to prove their skills in events such as pie eating, egg throwing, and three-legged racing. The co-eds are continually spurred on by masculine fans.

Mighty Seniors Only . . .

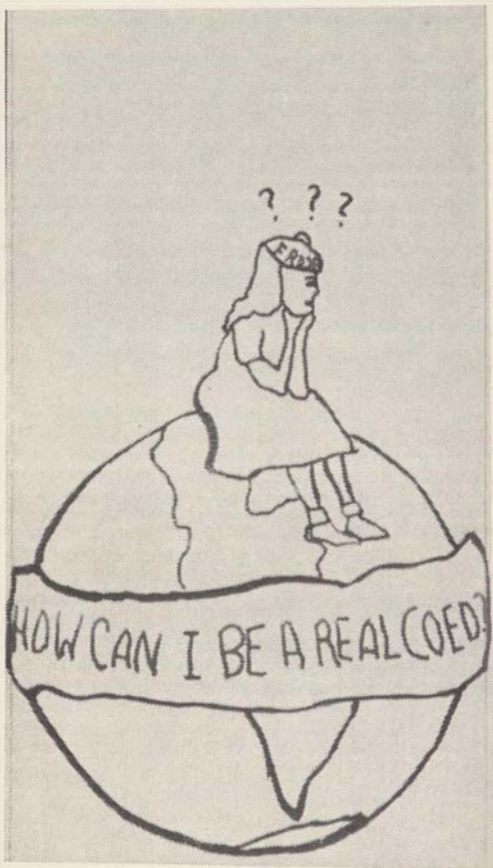
When a Grizzly gets to be a senior (and only then) he is entitled to sit on the **Senior Bench**, a bench donated by the class of 1910, and located just inside the right entrance to the oval.

On the Saturday night before **Commencement**, upper-class women honor the graduating seniors with the **Lantern Parade**, another AWS sponsored project. The co-eds march around the oval carrying lighted lanterns while the seniors, in caps and gowns, form an M in the center. "Montana, My Montana" is sung from the tower of Main Hall and MSU women respond with "Old College Chums." The Lantern Parade is one of the most inspiring traditions at MSU and a fitting tribute to the graduating seniors.



Small but Necessary . . .

All of these things are the traditions of MSU, and there are many more that you will discover for yourself when you arrive and become a Grizzly—such as walking around the oval instead of across it, the band marching and practicing on the Clover Bowl day after day, the ROTC units parading on the Oval Monday evenings during Spring quarter, coffee in the Lodge between classes, the Foresters and Awards Convocations and Charter Day. These traditions enrich the days and years at MSU, creating memories that will remain a precious part of your life, living on in the hearts of the past, present, and future students of MSU.



How Can I Be a Real Co-ed?

Coediquette . . .

Making new acquaintances is a perpetual process on a college campus, so let's get started with introductions. The most gracious form to use is, "May I present . . ."—but more simply you can say, "Do you know . . ." or "I'd like you to meet . . ." or simpler still, you may just mention the two names. Try to give some information about the people you are introducing so that the conversation will start rolling. Nobody likes to stand like a bump on a log in utter silence.

Which name comes first? The woman's, if you are introducing members of the opposite sex. The older person's if they are of the same sex. The married woman's name first if introducing her to an unmarried woman. The most important person first if he is really distinguished. Examples:

"Miss Jane College, this is Mr. Joe University."

"Mrs. Gray-hair, Miss Frances Frosh."

"Dr. Pains, have you met Miss Poodlecut?"

If someone is introducing you, smile and say, "How do you do?" Should you shake hands? Here's the formula. Two women may or may not shake hands. You usually won't offer to shake hands with a man unless you are the hostess. If you do shake hands, make the handshake a good firm one. Don't use a wrestler's hold, or the dead fish type, and **never** refuse an extended hand.



When parting, Mr. Gentleman may say, "I'm glad to have met you." If he does you may reply, "Thank you," or on special occasions, "It's been a pleasure." But be smart and play it cool. Let him make the first comment.

Here's to You . . .

Here's to you—attractive, pleasant, likeable you. Throughout your life, and especially in college, you will be meeting many people. You will want to be the kind of person others will like and want to know better. As the first impression is often lasting, here are some hints to help make it a good one.

Appearance counts so be neat and clean. There is no excuse for an unclean or unpressed dress or blouse. Wear outfits suitable to the occasion, and remember, it is better to be Plain Jane than Fancy Nancy. Stringy, unkept hair has never been known to receive compliments, and too much make-up won't make a good impression, either. It's you they're meeting, not Max Factor. Remember, scrub in time, and you'll look fine.

Sounds are so important. One of the first things people will notice when they meet you will be your voice. A pleasing voice and good grammar will do a lot toward making that good first impression. If others have to translate your high school lingo, or rearrange your misplaced modifiers, they may not have time to talk to you again. Profanity is something we can all get along without, and while we're on it—gossiping never helps, only



harms others. There may be a time and place for most things, but never for these two.

Popularity Pointers . . .

Now, just a word of advice in regard to those new friends you will be making. If you want to be a real co-ed, remember: Friendly attitude, willingness to co-operate, and good manners are important. If you live on campus, you'll find the dorms have many rules of discipline necessary to keep a group of girls living in harmony. If at times you feel regimented, remember that the University has an obligation to your parents and that there must be regulations for the good of the many—so co-operate, be friendly and natural, and you'll get along fine. Here are some inside clues to make and keep a great many friends in college:

1. Get to know and to understand the girls you are living with. Make a sincere effort.
2. Act happy and be agreeable—keep your troubles to yourself.
3. Study elsewhere if your roommate needs her beauty sleep.
4. Return borrowed articles, pressed and cleaned and in as good, if not better, condition as when you used them. Better still, don't borrow!
5. Keep your room clean and inviting to your visitors. Tidiness applies not only to your own room but to the others you wander into.
6. Remember the phones are for everyone—so don't stay on longer than five minutes, even if he is your dreamboat!
7. Don't brag about your high school accomplishments. Doing is more important than saying, so get to work and let your college record prove it.

Dating Dope . . .

Dating will be a big part of your life in college, and with a little common sense and a few sensible rules to follow, you can't go very wrong.

1. Never break a date with one man to go out with another. The first one will certainly not appreciate it, and the second one will probably end up mistrusting you, too.

2. Should you accept blind dates? Sure you will. Don't forget he's taking a chance too, and you've got a fifty-fifty chance to meet a real nice guy. Just check with whoever arranges the date, and no doubt you'll have a good time.

3. When you're asked for a coke date, he means just that, a coke—not a hamburger, malt, or French fries. Maybe he's only got a dime, and besides, consider your figure.

4. Be a little bit lazy. Hand him your coat, and hesitate before doors. He'll get the idea and probably like it.

5. Try not to rattle on and on about the other men in your life. Your date, being reasonably normal, would probably prefer other subjects, and especially appreciate the chance to get a few words in now and then also.

6. And while we're on the subject, young love will probably blossom, as young love has a habit of doing, but nothing is gained by demonstrating the fact all over campus especially on the steps of the dorm at about 12:59 a.m. Remember, you'll see him tomorrow, and anyway, the housemother would like to get a little "shut eye."

What to Wear? . . .

If you're puzzled about what kind of fur is in season, the following chart will aid you. If you can't find the information on the chart, be safe and ask your junior sponsor or see what the other girls are wearing.

Remember, **grooming** and **posture** are as important as the proper clothes. Keep your hair, body, and nails clean, your clothes brushed and pressed, and your shoes polished. Walk like a co-ed queen—with your chin up, chest up, stomach tight, and your seat tucked under.



If you're planning to buy many new clothes before you come to MSU, remember—plan your wardrobe so that it revolves around two or three basic colors. This makes for a more stylish you and cuts down on your expenses for matching accessories. Don't buy too much—wait until you're in the know.

If you aren't quite sure—stick to the conservative side. A plain coat can go anywhere, even for evening; so can a smart simple suit. A basic dress can be changed by scarves and beads. Plain pumps are always smart and never out of style. A raincoat and galoshes are needed for those rainy days.

Don't let this stiff, formal chart of clothes discourage you, for there's more. There are some out-

fits that you won't be wearing every day, or even once a week, but will be just the thing now and then. If you're not afraid of the casual look, bring your Bermuda shorts, socks and all, they're ideal for dormitory lounging.

For more conservative girls, pedal pushers and tapered pants are "en vogue" for picnics, hiking, or just casual wear. If you're searching for that first tan, don't forget your swimming suit. You won't use it much during winter quarter (except for Thursday night swimming) but come spring and the sun, you'll be glad you brought it.

Speaking of winter quarter, skiers—don't forget your ski togs. There are many fine ski areas close by for those weekends and Friday afternoon ski classes. Besides, what is a better way to spend a Saturday afternoon than on a toboggan or skating party?

For tennis fans, shorts and blouses are court garb and don't forget your racket and tennis balls. Spring quarter also sees lots of golf, hiking, and horseback riding, so be prepared for many good times.

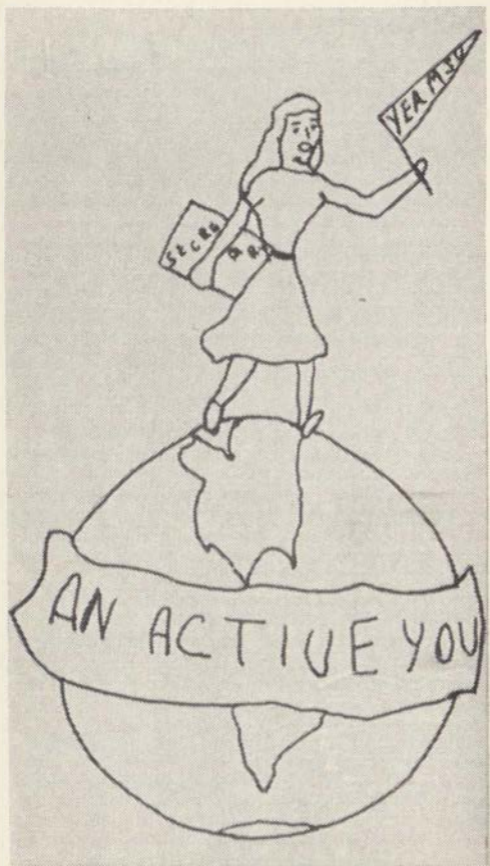
One last hint—many of the functions you no doubt will be attending will be costume parties. There are circus parties, Hawaiian and French parties, the big Sadie Hawkins, and even a good old fashioned barn dance—plus many, many more. Come well prepared with costumes and plenty of ideas. You'll never regret having them.

If you're still a little confused about what to bring or buy, wait until you see what you'll need. Spend wisely. The money you save may be your parents and the good times you have will be your own.



To Keep You in the Know . . .

Event	Dress	Hat	Shoes	Purse and Gloves	Coat
Class, Library and Campus	Skirts, sweaters blouses, simple wool or cotton dresses; NEVER JEANS, except on Saturday till 5:00	Scarf, if needed	White bucks, loafers, flats, and for winter, snow boots	Purse, mittens or gloves	Warm for winter, jacket, raincoat for spring
Athletic Event	School clothes or sporty dress ups	Scarf, if needed	Flats heels, school shoes for football, snowboots	Purse, mittens or gloves	Yes, warm
Concerts and Plays	Suit, tailored or dressy dress	No	Heels or dressy flats	Purse, gloves	School or dressy coat
Shows	Tailored wool suit, school clothes	No	Flats or heels	Purse, Mittens or gloves	School coat
Teas - Receptions	Dressy dress, suit	Yes	Heels	Yes, both	Dressy
Firesides, Exchange Dinners	Tailored dress, dressy dress	No	Heels or dressy flats	Probably not	When necessary
Mixers	School clothes, simple wool	No	School shoes, flats	No purse	School or sport
Formal Dances	Short or long formal	No	Dressy heels or flats	Yes	Dressy
Semi-Formal	Short or long but not too bare; cocktail type popular	No	Dressy	Yes	Dressy
Informal	Dressy street length	Sometimes	Heels or	Yes	Plain coat
Big-Name Band	Dressy dress, dressy skirt and jeweled sweater	No	dressy flats Heels	Gloves	Dressy

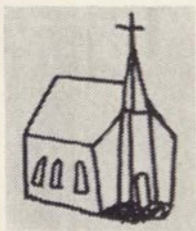


Would You Like An Activity?

Activities of all kinds are yours for the asking. Where your interest lies, you'll find enjoyment. Here's your opportunity to meet people, make friends, have fun, gain experiences, and contribute to a worthwhile organization.

We All Go to Church . . .

One of the first groups with which you will come in contact is the youth group of your church. Here is a chance to find people with ideas and beliefs

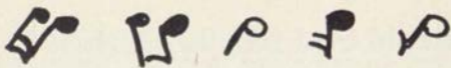


similar to yours; they will be eager to make you a part of the organization. These clubs include: **Roger Williams Fellowship**, Baptist; **Newman Club**, Roman Catholic; **Christian Science Organization**; **Canterbury Club**, Episcopal; **Lutheran Student Association**; **Wesleyan**, Methodist; **Deseret Club**, Mormon; **Westminster Foundation**,

Presbyterian. Get in on the ground floor of these organizations and you'll find lots of wonderful friends.

Student Government . . .

ASMSU—the Associated Students of Montana State University—is organized around Central Board. This board is composed of the President, Vice-President, Secretary, and Business Manager of ASMSU and two elected delegates from each class. All issues, problems, needs and activities of the student body are discussed, solved, met and sponsored by this group. The officers and upperclass delegates are elected in the spring and the freshmen choose their representatives early in fall quarter.



So You Like Music . . .

Do you realize that MSU has the best school of music in the Northwest? The **Symphony Orchestra** gives quarterly concerts, and plays on special occasions, such as Commencement. The **Concert Band** has two formal concerts plus several small concerts and an occasional trip. Football seasons finds the **Marching Band** and **Twirlers** performing on the field. The **A Cappella Choir**, **University Chorus**, **Jubileers**, and other choral groups unite each spring and at Christmas time to present special programs.

What About Writing . . .

If you are interested in publications you will have an opportunity to work on **Venture**, the **Sentinel** or the **Kaimin**. **Venture** is an all-school magazine edited by students, which presents short stories, sketches, editorials, essays, and poetry by campus writers. **The Kaimin** is published by students of the journalism school every Tuesday, Wednesday, Thursday, and Friday. It is distributed to the Lodge and all buildings on campus before noon, and is free to all students. After you're well acquainted with college life and are anxious to have in permanent form a concentrated capsule of your school year, you may pick up your **Sentinel**. This year-book contains your complete year—your friends, profs, classes, traditions, and dances. The **Sentinel** staff members are chosen spring quarter from the interested students who apply for work in the many divisions—typing, advertising, layout, etc.

Drama . . .

If you like drama, you may drop in on the tryouts held each quarter for **Masquer** productions. Individual effort will give you the part you desire. Besides acting, people are needed to paint flats, put grease paint on the play characters, make costumes, and participate in the business end of the play which includes house management, publicity, and ticket sales. If you have a golden voice, **Radio Guild** offers many opportunities.

Like Sports . . .

The **Women's Recreational Association**, known as **WRA**, through its intramural board, sponsors many activities that will give you the opportunity to meet lots of wonderful gals and exercise your muscles. The intramural board is composed of outstanding gals who have been selected to manage sports in which they excel. WRA sponsors social affairs and Play Day for high schools of this district, and participates in the annual college Play Day. Every university woman is automatically an associate member of WRA. After earning your first P.C. (participation credit earned for each hour



of intramural sports) you are entitled to active membership which entitles you to voting privileges and the right to participate in the social affairs of the organization. Each active member who earns six P.C.'s is awarded an "M" pin, ten P.C.'s earn her a gold block "M" and membership in the women's M club.

The **Ski Club** is open to any and all who like to ski—also those who like to try. Main events in the club include the Ski Weekend, an annual trip to Big Mountain, the intramural ski meet at Diamond, and many wonderful skiing days.

Let's Argue . . .

If soothing little arguments settle your nerves, you'll like the **Debate Team**. Any student is eligible to try out for a place on this team, which meets other collegiate groups in hot debate. Individual members successfully enter state oratorical and extemporaneous contests.

A group which adds variety and information to your campus life is **Montana Forum**. This is a faculty-student discussion group which meets at a weekly luncheon and discusses subjects of interest to the participants. It's an informal way to learn important and eye-opening facts.

Want More Suggestions? . . .

For an abundance of exercise and good times, the **University Saddle Club** is the organization to join. It plans pack trips and Sunday rides in the mountains and puts on horse shows both fall and spring quarters.

The **Royaleers** are looking for the true lovers of the art of square dancing. Anyone may try out for admission and members find that their schedule of tours and exhibitions makes for much fun for all.

Girls who love to fly will be glad to hear of the **Flying Club**. It is open to anyone over 15 years of age and the club even owns its own plane.

If you happen to be interested in politics and are proud of your party (as you should be), try the **Republican** or the **Democrat Club**.

Foreign minded students will find a source of information through personal contacts in the **International Relations Club**.

The **Independents**, an organization for non-fraternity students, sponsors exchange dinners and firesides as well as meetings for sociability.

A non-denominational Christian fellowship, the **Student Christian Association**, is an interesting group which has faculty firesides, Interchurch Council, and sponsors Freshman Camp.

There are quite a number of clubs for "majors," as nearly every school on campus has at least one organization. You'll find the **Liberal Arts Club**, **Student Education Association**, the **Forestry Club**, the **Math Club**, the **Chemistry Club**, the **Home Arts Club**, the **Pharmacy Club**, the **Bacteriology Club**, the **Press Club**, and the **Wildlife Club**.

In addition to these organized activities on campus, which are open to women, you will find yourself involved in student government affairs and living group participation. Nothing else can be said except—there's lots to do for an active you!

Activities Balance . . .

Your AWS keeps the active co-ed on a well balanced diet of activities via the point system. This is a mechanical load leveler which limits the amount of outside activities any one girl may hold at one time. The following list of permanent A offices has been drawn up by the AWS Executive Board and no girl may hold any two of these offices at the same time, and one additional requirement—no girl may hold an AWS office and an ASMSU office simultaneously.

PERMANENT A

President of AWS
President of ASMSU
Editor of Kaimin
Business Manager of Kaimin
Editor of Sentinel
Business Manager of Sentinel
President of Spur
President of WRA
President of Panhellenic
President of Living Group
President of Mortar Board
President of Organized Independents
Chairman of Judicial Council

What Are The Studies?

Here you are in college and it's time to start studying. Believe it or not, the most important thing you do while you are in college is to attend classes and to study. There is an art to studying efficiently and retaining a maximum of what you study and read. In order to help you get started on your program of studying, here are a few hints on efficient study habits. If these habits are developed in your first year of college, they will be valuable to you in all the studying you will do.



Study Habits . . .

Study at a regular time and in a regular place. Establishing habits of study is important. Commit yourself definitely in your schedule to "study history, study chemistry" rather than just "study." Study as soon after the lecture class as possible; check over notes while they are still fresh in mind. Start the next class assignment while memory of it is still accurate. Jot assignments down carefully—what they are and when they are due. Utilize odd hours of the day for studying instead of wasting them away; if you get into the habit of using them for studying the class just finished, you will retain the subject better and you won't have to do all your studying late at night. Use no more than two hours on any one course at any one time. Don't study two similar courses one after the other. Retention is lowered when you do this. Trade time—don't steal it. When unexpected events arise, plan immediately where you can make up study time lost.

Scientific Method . . .

You have heard of the Scientific Method in terms of science and research, but did you know that there is a Scientific Method of studying? First there is **self recitation**—you question and answer yourself on the subject you are studying. Before exams, put yourself in the professor's place and try to figure out what questions he will ask. This helps get the whole organization and over-all picture and relation of facts. **Spaced review**—reinforcing techniques which, if observed carefully, will make the taking of exams almost painless. Forgetting occurs rapidly, but immediate review or summarization of material just studied aids retention as do reviewing each subject every week and re-reading notes and text.

S Q 3R . . .

S Q 3R Method is an effective way to handle daily assignments. **Survey** the material you are going to cover and get an idea of what is going to be discussed—set an idea goal rather than a page goal. Jot down the ideas you expect to cover. **Question** yourself about the unit you are going to read. If the unit heading reads "Stages in the development of speech," turn it to "What are the stages in the development of speech?" In this way you will read to find out. **3R**—read, recite (repeat), review. **Read**—the unit to get the answer to the question you have just asked. **Recite**—a few brief notes on what you have just read. **Review**—immediately the entire assignment and ask yourself questions to see if you have understood everything.

Rewards? . . .

Don't let all these suggestions bog you down or make you think that college studying is going to be impossible. Sure, you're going to be working much more than you did in high school, but take it from those who have lived through it all—these hints are

the best way to make it, and don't wait until your first final week to put this method into practice, for it's a daily project. And the rewards? These will come time and again when you find yourself on the Dean's Honor Roll and eligible for honoraries that recognize your hard efforts.

What Are The Rewards?

Fun is all very well in its place, but when it comes to settle down to serious school work, it is wise not to debate over the question, "to study or not to study." If you plan a study schedule and stick to it, you will be able to get good grades and still have extra time for all these activities and more fun too. Both grades and activities are important for membership in the various honoraries, and time must be allotted to each according to your individual abilities. Do your best both in your courses and extra-curricular activities, and there will be honors for you.



Alpha Lambda Delta . . .

Freshman women who have maintained a grade point index of 3.5 (B plus) average fall and winter quarters are elected to Alpha Lambda Delta, national honorary which was founded at MSU by the local chapter of the senior scholastic honorary, Mortar Board. The active members encourage high scholarship among freshman women, and at a ceremony in the dorms, winter and spring quarters, present roses to those women having earned a 3.5 average for the previous quarter.

Spur . . .

Tanan-of-Spur is an honorary for sophomore women. Each spring twenty-five Spurs are chosen on a basis of dependability, a 2.5 grade average for two quarters, school spirit, neatness, willingness to work, pep, personality, and activities. Activities include dramatics, athletics, music, debate, publications, clubs, and religious groups. An important requirement for eligibility in Spur is that a girl drinks only soft drinks during her freshman year. This is also true of her sophomore year, when she is an active Spur.

Mortar Board . . .

This is the highest honor a woman can earn while at MSU. Members are chosen during their junior year by a unanimous vote of the active chapter and are tapped at an SOS during Interscholastic. They are active during their senior year.

Mortar Board members are definitely above average in scholarship, leadership, and service. Sponsoring a training workshop for all campus officers, giving the "Smarty Party," sponsoring the local Alpha Lambda Delta, and supervising Orientation Week are included in their activities.

Phi Kappa Phi . . .

Phi Kappa Phi, national scholastic honorary which recognizes students and faculty with superior scholarship in all fields of study, includes those in the upper five per cent of the junior class and the upper ten per cent of the senior class, and outstanding faculty members. The group publishes a student-faculty directory, the "Grizzly Guide" and offers a scholarship to an outstanding junior each year.

Eta Epsilon . . .

Eta Epsilon, women's home economics honorary, promotes home economics on the campus. A member must be of junior standing, have taken at least 24 credits and have maintained a 2.7 grade index in this department. She must have the university average for her entire school career, have no F's on her record, and be active in the Home Arts Club.

Phi Chi Theta . . .

The main qualifications for membership in this women's business honorary is a 2.5 grade average in business administration. The honorary works with the men's counterpart, Alpha Kappa Phi, on the annual business administration banquet and the yearly job clinic. Other activities include the giving of a \$25 scholarship to the junior girl with the highest grade index in business administration. A key is awarded to the most outstanding girl in business administration.

Beta Gamma Sigma . . .

This honorary, based entirely on scholarship, is composed of women in the top ten per cent of all senior business students and the top three per cent of all junior business majors. New members are initiated preceding the yearly business administration banquet.

Theta Sigma Chi . . .

This is the women's journalism honorary which takes an active part in J-School activities. Every year this group sponsors Matrix Table dinner which honors an outstanding co-ed from each class and recognizes noted Missoula women. A "B" average in journalism and a "C" over-all average must be maintained for membership in this honorary.

Mu Phi . . .

Women with a 3.5 average in music and an overall university average of 3.0 are eligible to be members of Mu Phi, music honorary. Their activities include presenting a musical convocation to the student body, handling the publicity for recitals given by women students and assisting with music meets. Members are chosen on the basis of scholarship, music participation, campus activities, and character.

Masquers . . .

Masquers is a drama honorary for men and women which pledges students who have put in 200 hours (20 points) in two fields of endeavor. Masquers



Royale is the highest title, given to students who have 100 points. Various activities participated in by Masquers besides major productions are variety reviews, the Little Theater Festival during Inter-scholastic, and an all-school musical and spring operetta with the music school.

Aquamaid's . . .

Aquamaid's is a swimming honorary for women who are outstanding swimmers. New members are chosen by vote of the old members after tryouts during fall quarter. They present an annual water pageant in the spring and sponsor intramural and intercollegiate women's swim meets.

Women's "M" Club . . .

Junior women having a "C" scholastic average and ten participation credits, earned in three team sports, three individual sports, and four elective sports of which not more than two may be interseasonal sports, are eligible to become members of the "M" Club, providing they meet the character and leadership standards set by the club. The "M" Club works with WRA, sponsoring several social affairs and play days.

Jubileers . . .

Jubileers is a singing group composed of twenty of the best singers on campus. These vocalists not only have singing talent, but a tremendous amount of poise, personality, and stage character. This group furnishes entertainment for various campus events, besides making an annual tour throughout the state.

Angel Flight . . .

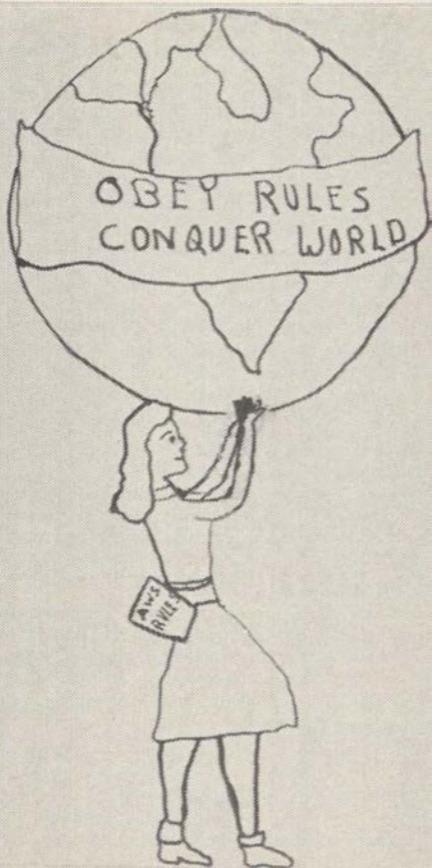
Each fall, twenty-five freshman girls are chosen on the basis of personality and attractiveness by the ROTC members for this honorary. These girls, along with the old members, march in reviews sponsored by the ROTC.

Junior Sponsor . . .

Each spring about 15 sophomore girls are chosen to be Junior Sponsors and counsel the Freshman girls in the dorms the following year. Choices are made on the basis of personality, activity, interest in the University, scholarship, and counselling ability.

Kams and Dregs . . .

This organization is composed of the "wits" of the campus. At sporting events, they promote school spirit by their clever yells and gimmicks. New members are chosen in the fall of the year by vote of the present members. Only juniors and seniors are eligible.



Do We Have Any Rules?

Your rules—made by you, changed by you, obeyed by you.

For the women students at Montana State University the AWS Executive Board has formulated the following rules, regulations and standards. Some of these poliices have been in effect and enforced for many, many years and yet still today serve the same purpose for which they were established. Others have been passed as the need arises. All of the rules and regulations are enforced by the power and authority of the AWS Board, whose enforcement has been delegated by the Associate Dean of Students office. However, the Associate Dean, Miss Clow, is also our advisor and her help is often sought and always respected. So this is what will be expected of you, for they were made by you and therefore must be obeyed by you until for some worthwhile reason they will be changed by you.

Hours . . .

Freshman women students shall be in their homes by 10:30 p.m., Sunday, Monday, Tuesday, Wednesday, and Thursday. Upperclassmen have the same hours, with the exception of 11:00 p.m., Sunday. On each Friday, Saturday, and on Thursday of final week and nights preceding all University holidays, (Thanksgiving, Memorial Day, Track Meet) hours are 1:00 a.m.

Concert Hours are given to students attending concerts, plays, ball games, etc., on school nights, if these events last longer than the regular hours. However, you must return immediately to your house when the affair is over.

Late per is another type of special hour regulation. It is granted, under special circumstances involving departmental work, by the Associate Dean of Students. This permission gives women the privilege of staying out past the regular hour.

Junior and Senior Privileges give junior and senior women the opportunity to stay out until 11:30 p.m. two times during the week (excluding Monday). For a senior to qualify for this privilege she must have a "C" average, 135 credits plus 6 P.E. credits, and have passed the University swimming test. To be entitled to junior per fall quarter, the girl must have junior standing, passed the University swimming test, an over-all 3.0 average and a 3.0 average the previous quarter. Juniors with a 2.5 over-all average and a 2.5 average fall quarter may take late per winter and spring quarters.

Serenade hours, given by the Associate Dean, are granted to girls on the night of their serenade. This permission allows the girl to stay out one hour past her serenade or until 12:00 p.m.

For all privileges involving late permission have consideration for your housemother and let her know before 6:00 p.m. on the night you will be staying out late.

Signing out is a procedure to help locate you in cases of emergency. All women are required to sign in and out of their dormitory residences if leaving after 6:00 p.m., or if going off campus. In case of returning late, failure to sign out properly results in an additional campus.

Men's Calling Hours—men are allowed in women's residences only after 4:00 p.m. on Monday through Thursday; after 12:00 noon on Fridays and Saturdays; and after 9:30 a.m. on Sundays. They are not allowed in women's housing between 7:30 and 9:30 p.m. on Monday through Thursday nights. College women may not enter men's residences without approved chaperones.

But What Is a Campus? . . .

A campus is the usual penalty for an infringement of the above rules. This means that the girl is restricted to her living quarters from 7:00 p.m. until 7:00 a.m., during which time she may receive no guests. She must also report to her housemother at 7:00 p.m. on the night of her campus. Failure to do so, even if she is in her house, will result in an additional campus. Failure to take a campus on the night appointed by AWS results in four consecutive weekend campuses. A campus is usually taken on a Friday night, unless decided otherwise by the AWS Judicial Board. campuses are given for one late of 15 minutes or more; two lates totalling 15 minutes in any one quarter; or three lates in one quarter whether they total 15 minutes or not. If you call or notify your housemother when you are unable to meet the specified hours, this will be taken into consideration by the board. If you have been late enough to warrant a campus your case will appear before the AWS Board. You will be given a late blank by your AWS representative which you are asked to fill out completely and state your reasons clearly so the Board can consider your case with the greatest fairness. You have the right at any time to request an interview with the Judicial Board to present your case.

1. Failure to turn in the late blank to your AWS representative in time for the late to be considered at the board meeting at 4:00 p.m. on the Monday following a late to be considered for a campus will result in an additional campus.

2. Girls are held responsible for returning from trips home, out of town visits, University sponsored

weekends, etc., on time. It is up to each girl to be certain that her ride is dependable and that they will return to MSU safely and with ample time to allow for difficulty.

3. If a girl is signing out of her living group and will be missing any classes, it will be necessary for her to sign out in Dean Clow's office. Failure to do so will result in a campus.

Explanation of No. 1—A girl must turn in the filled-in late slip in time for the first AWS meeting which follows the night of her late. (This, of course, is in the event that it is her third late or is over 15 minutes.)

Deferred campus may be granted by the AWS President. For each night deferred, an extra campus will be added. However, for reasons such as a house or dorm function, University authorized trips, etc., the President may defer the campus without added penalty.

Leaving Campus . . .

To go home—as a freshman you are allowed only three weekends per quarter for going home or on other trips. If you earn a 2.4 or above grade average fall quarter, you are exempt from this rule the following quarter. A 2.0 or above grade average winter quarter exempts you from this rule spring quarter. When going home you must fill out a slip in the office that gives you permission to leave. You are required to report back to your respective living group according to University hour regulations. If you are unable to return by the specified time, you must notify your housemother.



A woman student desiring to be absent from her University residence (residence hall, sorority, or Synadelphic House) will be required to register such absence on the out-of-residence registration form with her head resident or housemother or the Associate Dean of Students and to sign in upon her return in accordance with University or AWS regulations and parents' permission.

1. Permission given by the head resident or housemother:

A. Women will be granted out-of-residence permission by registering **personally** with the head resident or housemother on weekends only (i.e. Friday and Saturday evening) under the following circumstances:

(1) To go home.

(2) To visit friends and relatives living out of Missoula upon receipt of a written invitation.

(3) To spend the night with parents living or or visiting in Missoula.

B. According to AWS regulations women are expected to return to their residence by closing time. Special travel permission may be granted to students at the discretion of the housemother not more than **three times per quarter** to return on or before midnight in case of late bus or train. This permission will be granted only for travel by public conveyance and if a request is made **before** departure.

C. For absence necessitated by emergencies such as sudden illness or death in the immediate family.

D. Women going on hikes or automobile trips shall inform their respective housemothers as to the direction of such hikes or trips when possible, and must sign out if they expect to be away more than two hours.

2. Permission given by the Associate Dean of students:

A. Women will be granted special out-of-residence permission by registering personally with the Associate Dean of Students under the following circumstances:

- (1) For absences on school days resulting in absence from class.
- (2) To visit friends and relatives **living in Missoula any night** including Friday and Saturday, and to remain in town during vacation.
- (3) For authorized university trips such as debate trips, music tours, religious camps, etc.
- (4) Ski trips and weekend house parties of university groups, fraternities, etc.

Policies . . .

Unless requested for consideration, lates will not be discussed before the board until they total a campus.

A rate of 35 miles per hour should be allowed for travelling time and for any emergencies which might arise when you are returning to your residence. In giving campuses, this rate will be considered when a girl returns late to her residence.

Standards . . .

Your AWS Board throughout the year sets forth standards which are to be followed by the women at MSU. Many of these standards have already been expressed in this handbook, such as courtesy, etiquette and manners. In regard to dress, AWS upholds the following policies:

Slacks may be worn on campus only on Saturday. This includes meals and the library. Trousers of any kind are never worn to class, to the Lodge, or downtown at any time and on campus only on Saturday.

Bermudas generally replace slacks in warmer weather but are not worn to meals at any time nor to the Lodge. Otherwise Bermudas may be worn at the same time as slacks.

Bathing suits are strictly for swimming parties or sun-bathing close to your dorm. Missoula is far from the Riviera and the girls feel most comfortable in good old American bathing suits. Leave the briefs to Europe!

The above rules are applicable to regularly enrolled undergraduate women students during the regular academic year and Missoula women who come under University jurisdiction. All exceptions to the above rules and policies will be left to the discretion of the AWS Executive Board and the Standards Committee with the approval of the Associate Dean of Students.

Housing . . .

All freshman students, men and women, whose homes are not in Missoula are required to live in University Residence Halls unless excused by the Dean or Associate Dean of Students.

Upperclass women students under 21 years of age whose homes are not in Missoula are required to live in the Residence Halls, Synadelphic or Sorority houses, unless excused by the Associate Dean of Students; those over 21 may obtain permission to live in private homes or boarding houses, but not in apartments. Women students 25 years of age or older as of September 1, 1959 and married women students must have permission of the Associate Dean of Students to live in the Residence Halls.

Students living in the Residence Halls are required to take their meals in the University dining rooms in the Lodge (except in the few cases authorized by the Dean or Associate Dean of Students.

The Relationship of AWS To Judicial Council

In cases involving violations of AWS rules exclusively, such as hour violations, AWS has complete jurisdiction. In cases involving violations of University standards related to drinking exclusively, Judicial Council has complete jurisdiction. However, in cases where there are violations of both AWS rules and University drinking standards, a combined board selected from the officers of AWS and Judicial Council will function.

Since both of the organizations handle each case individually, the kind of board selected to handle the case will depend on the nature and extent of the matter involved. The AWS President is always an ex-officio member of Judicial Council.

And So

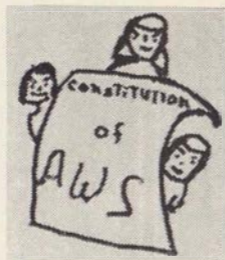
The time to begin is now—whether you find yourself in the position of the unsure freshman or the wise-cracking upperclass woman.

It is never too late to take in a meeting of that club you've always had in the back of your mind to join. Choose your activities as you do your clothes—with taste and forethought—as to how well you both suit one another.

It is not necessary to be an expert in the activity, sport, or project that your club is organized to perform or carry out. It is much more important to you and of more value to the organization, if you, instead of being an expert, have a sincere interest in what you are doing and the time to do it well.

The clubs, various activities and honoraries, and the elective offices are all here at MSU waiting for you, in addition to the opportunities for learning and securing a career. If you haven't yet, the time to begin is now.

ASSOCIATED WOMEN STUDENTS CONSTITUTION



Preamble

We, the women students of Montana State University, acting under authority granted by the administration, in order to assume individual and community responsibility in the life and conduct of women students and believing that there is honor and dignity in student government, do ordain and establish this Constitution of the Associated Women Students of Montana State University.

Article I

Name

The name of this organization shall be the "Associated Women Students of Montana State University."

Article II

National Affiliation

The organization is affiliated with the Intercollegiate Association of Women Students.

Article III

Membership

Section 1

All undergraduate women students of Montana State University shall be ipso facto members of this organization and shall be governed by the constitution.

Section 2

The Associate Dean of Students shall act as Advisor to this organization.

Article IV

Organization

Section 1: Executive Board

- a. The Executive Board shall be composed of the elected officers; one representative from each sorority, each Freshman womens' dormitory and Synadelphic; two representatives from Turner Hall; and one representative from Panhellenic.
- b. The Executive Board shall have executive, legislative and judicial powers.
 1. The Executive Board shall have the authority to make rules and regulations and other pertinent legislation pertaining to women students. It shall have the power to interpret and enforce such legislation.
 2. The Executive Board shall have the authority to take action regarding infringement of legislation. This action shall be taken by the Executive Board itself or by the Judicial Board.
 3. The Executive Board shall foster specific activities which contribute to high academic standards, and shall promote activities which create opportunities for experience in self-government.
- c. Qualification and duties of representatives:
 1. All representatives shall have at least sophomore standing at the time of the regular election of officers, with the exception of representatives from the freshmen dormitories.
 2. All representatives are obliged to submit reports of any AWS violation to the Judicial or Executive Board. Deliberate failure to do this shall constitute grounds for removal from office by the Executive Board.

3. Each representative shall be required to submit to her housemother the list of the girl or girls who are campused on that particular night.
4. A representative shall send a substitute if she is unable to attend a meeting. The substitute will have the power to vote. A representative absent without a substitute obligates the organization she represents to a 25c fine, payable to the treasurer.
5. All Board members shall attend the first two meetings in spring quarter in an advisory capacity.

Article V Officers

Section 1:

The officers of this organization shall be a president, vice-president, secretary, and treasurer. All executive authority shall be vested in the president. In case of absence of this officer, such authority shall devolve upon the vice-president, the secretary, or the treasurer in that order named.

Section 2:

The officers shall assume their duties at the first meeting of the spring quarter, but shall attend meetings from the time of election until they take over their duties.

The President shall remain on the Board spring quarter in an advisory capacity.

Section 3: Qualificatoin and duties of officers.

a. President

1. The president of Associated Women Students shall be of junior standing at the time of the regular election and shall have served as a voting member of the Board one year previously. She shall have a scholastic average of at least C.

2. The president shall preside over all meetings of the Associated Women Students, the Executive Board and the Executive Council.
3. The president shall appoint chairmen of committees, appointments subject to approval by the Executive Board. The Big-Little Sister chairman, the Handbook chairman, and the Special Activities chairman are elected by the Executive Board from the candidates submitted by the women's living groups.
4. The president shall represent AWS at Judicial Council when called upon.

b. Vice-President

1. The vice-president shall be of at least sophomore standing at the time of the regular election and shall have a scholastic average of at least a C.
2. The vice-president shall officiate in the absence of the president, and shall succeed to the office of president in the event that office is vacated.
3. The vice-president shall be chairman of the Judicial Board.

c. Secretary

1. The secretary shall be of at least sophomore standing at the time of the regular election and shall have a scholastic average of at least a C.
2. The secretary shall keep a record of the proceedings of AWS, of the Executive Board, and of the Executive Council.
3. The secretary shall take care of all correspondence of AWS, including IAWS correspondence.

d. Treasurer

1. The treasurer shall be of at least sophomore standing at the time of the regular election and shall have a scholastic average of at least a C.

2. The treasurer shall make monthly reports to the Executive Board of all funds received and expended and all debts and balances as submitted to her by the auditor of the student organizations and in accordance with her own books.
3. The treasurer must sign all requisitions, contracts, and payments after they have been approved by the Board. Loans from the students' loan fund will be made by the president upon recommendations of the Associated Dean of Students and the Business Manager of the University.
4. The treasurer shall be in charge of primary and general elections.

Article VI

Meetings

Section 1:

Meetings of the association shall be held at the discretion of the president or at the request of twenty-five members of the association.

Section 2:

Meetings shall be conducted in accordance with Roberts' Rules of Order.

Section 4:

Meetings shall be considered properly advertised if notices of such meetings appear in the Kaimin and are posted on the bulletin board one day before the meeting.

Article VII

Elections

Section 1: Primary Election

- a. Primary election shall be held one week before the general election.
- b. All candidates for office must present a petition bearing ten signatures to the secretary of AWS not later than one week preceding the scheduled primary election.

- c. The two candidates for each office receiving the highest number of votes in the primary election shall become candidates for office in the general election.
- d. The primary election shall be eliminated if there are only two petitions filed for each office.

Section 2: General Election

- a. The officers shall be elected for a period of one year at a regular general election the first week of March.
- b. A majority vote shall be required for election.

Section 3:

In the event of a vacancy in the offices of vice-president, secretary, or treasurer, the offices shall be filled by a member of the Executive Board elected by a majority vote of the Board.

Article VIII

Finances

The finances of the association shall be supplied from an amount appropriated by Central Board according to its budget.

Article IX

Amendments

Section 1:

The Constitution may be amended by a majority vote of all members. This vote may be taken at a mass meeting or by polling the living groups.

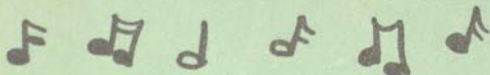
Section 2:

Proposed amendments to the Constitution shall be posted at least five days before a mass meeting or shall be read to each living group one week prior to the voting.

I am only one, but I am one
What I should do, I can do
What I can do, by God's Grace,
I will do . . .



Delaney's



Traditional MSU Songs

UP WITH MONTANA

Up with Montana, boys, down with the foe,
Old Montana's out for a victory;
She'll shoot her backs around the foeman's line;
A hot time is coming now, oh brother mine.
Up with Montana, boys, down with the foe,
Good old Grizz'll triumph today;
And the squeal of the pig will float on the air,
From the tummy of the Grizzly Bear.

HAIL, COPPER, SILVER, GOLD

Hail copper, silver, gold borne by our warriors bold
It's the flag of the Grizzly Bear.
See those Bruins tearing their way down the field,
We know they never will yield, Montana.
On they go and trample down the foe,
Let's go, Montana, we love the fray,
The Grizzly fight, fight, fight, will bring victory
Let's go Montana, we'll win today.

OLD COLLEGE CHUMS

Old college chums, dear college chums,
The days may come, the days may go;
But still my heart to mem'ries cling,
To those college days of long ago.
Thru youth, thru prime, and when the days
Of harvest time to us shall come,
Thru all we'll bear the mem'ries dear,
Of those college days of long ago.

