

1-1-1961

Associated Women Students Handbook, 1961-1962

University of Montana--Missoula. Associated Women Students

Let us know how access to this document benefits you.

Follow this and additional works at: https://scholarworks.umt.edu/aws_handbook

Recommended Citation

University of Montana--Missoula. Associated Women Students, "Associated Women Students Handbook, 1961-1962" (1961).
Associated Women Students Handbooks, 1919-1963. 21.
https://scholarworks.umt.edu/aws_handbook/21

This Handbook is brought to you for free and open access by the University of Montana Publications at ScholarWorks at University of Montana. It has been accepted for inclusion in Associated Women Students Handbooks, 1919-1963 by an authorized administrator of ScholarWorks at University of Montana. For more information, please contact scholarworks@mso.umt.edu.



*"Miss
Collegiate"*

**Official Handbook
1961-1962**

**Associated
Women
Students**

**MONTANA
STATE
UNIVERSITY**

YOUR AWS GUIDE

Official Handbook for Women

of

Montana State University

Committee

Chairman:

BARBARA BURRELL

Marcia McDonald

Pat McCallum

Diane Pendegast

Dodie Keener

Jody Tierney

Judy Johnson

Bonnie Templin

Dee Mast

Kathy Myrick

Sharon White

Delores Sager

Kalu Russell

Jame Pope

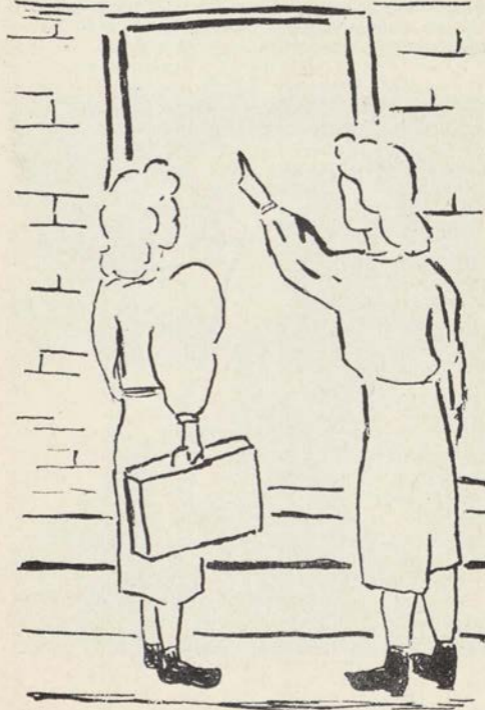
Ann Minteer

Margaret Doyle

TABLE OF CONTENTS

What Is AWS?	4
Constitution	7
How Is It Organized?	14
AWS Calendar of Events	16
(Missoula and MSU including Traditions)	
"I Could Have Danced All Night"	21
(Social and Activity Opportunities)	
"With Just a Little Bit of Luck"	30
(Scholastic Requirements and Rewards)	
Need Some Money?	33
What to Wear	36
Rules and Regulations	41
Your Dorm	47

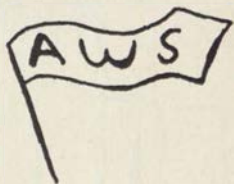
WELCOME
+o
MSU



What Is AWS?

ASSOCIATED WOMEN STUDENTS, known on the campus as AWS, is an organization to which all MSU women belong. AWS dates back to 1914 when it was known as the "Women's League." Since then it has developed into a body controlled by the women students and governing their activities.

The AWS Executive Board, composed of representatives from all women's living groups, meets with the four elected officers to plan and carry out the policies the women of MSU feel are necessary to maintain high standards on the campus. The varied activities sponsored by AWS are organized and supervised by this Executive Board. You will be asked for your active participation in AWS



activities, and your efforts, energy, and ideas for improving your organization and campus will be welcomed. Throughout the year AWS carries out a program designed to unify women attending MSU, to give more leadership opportunities for women, to work for better student government, and to promote school spirit.

Remember—**you are AWS**—You are its reason for existence and only you can make it function to the benefit of MSU coeds. Take part in making your organization even more effective.

Meet Our Advisor

Welcome to Montana State University and to membership in AWS. University life is a new experience and one which should be both stimulating and inspirational for you. AWS has prepared this booklet as a guide for your campus life. I shall be happy to assist you at any time, and am looking forward to knowing personally each one of you.



MAURINE CLOW,
Associate Dean of Students

Meet Our Officers



Left to right Linda Kammerzel, Vice President; Ellen Parker, Secretary; Karen Upshaw, Treasurer.

Welcome to Montana State University from the Associated Women Students!

As a woman student at MSU, you will be a member of the Associated Women Students, better known as AWS, and have the opportunity to participate in our many activities.

In this handbook, you will find information which will be invaluable to you during the coming four years. It will acquaint you with the many activities on our campus to serve you and of which you may be a part, the standards you are expected to maintain, and helpful hints such as what to wear, how to study and "dating dope."

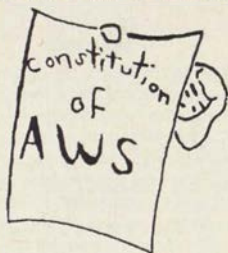
The officers of AWS, your living group representatives and our advisor, Dean Clow, will be happy to answer any questions you have and serve you in any way we can. We are working for you and hope you will be working with us.

Again, we welcome you and are looking forward to meeting you this fall.



SHARON BLASZEK
AWS President

ASSOCIATED WOMEN STUDENTS CONSTITUTION



Preamble

We, the women students of Montana State University, acting under authority granted by the administration, in order to assume individual and community responsibility in the life and conduct of women students and believing that there is honor and dignity in student government, do ordain and establish this Constitution of the Associated Women Students of Montana State University.

Article I

Name

The name of this organization shall be the "Associated Women Students of Montana State University."

Article II

National Affiliation

The organization is affiliated with the Intercollegiate Association of Women Students.

Article III

Membership

Section 1

All undergraduate women students of Montana State University shall be ipso facto members of this organization and shall be governed by the constitution.

Section 2

The Associate Dean of Students shall act as Advisor to this organization.

Article IV Organization

Section 1: Executive Board

- a. The Executive Board shall be composed of the elected officers; one representative from each sorority, each freshman women's dormitory and Synadelphic; two representatives from Turner Hall; one representative from Panhellenic and the chairmen of the standing committees, not to exceed three, which function continuously through the three-quarter term.
- b. The Executive Board shall have executive, legislative and judicial powers.
 1. The Executive Board shall have the authority to make rules and regulations and other pertinent legislation pertaining to women students. It shall have the power to interpret and enforce such legislation.
 2. The Executive Board shall have the authority to take action regarding infringement of legislation. This action shall be taken by the Executive Board itself or by the Judicial Board.
 3. The Executive Board shall foster specific activities which contribute to high academic standards, and shall promote activities which create opportunities for experience in self-government.
- c. Qualification and duties of representatives:
 1. All representatives shall have at least sophomore standing at the time of the regular election of officers, with the exception of representatives from the freshman dormitories.
 2. All representatives are obliged to submit reports of any AWS violation to the Judicial or Executive Board. Deliberate failure to do this

shall constitute grounds for removal from office by the Executive Board.

3. Each representative shall be required to submit to her housemother the list of the girl or girls who are campused on that particular night.
4. A representative shall send a substitute if she is unable to attend a meeting. The substitute will have the power to vote. A representative absent without a substitute obligates the organization she represents to a 25¢ fine, payable to the treasurer. All Executive Board members if absent more than three regular meetings shall be subject to removal from the Executive Board.
5. All Board members shall attend the first two meetings in spring quarter in an advisory capacity.

Article V Officers

Section 1:

The officers of this organization shall be a president, vice-president, secretary, and treasurer. All executive authority shall be vested in the president. In case of absence of this officer, such authority shall devolve upon the vice-president, the secretary, or the treasurer in that order named.

Section 2:

The officers shall assume their duties at the first meeting of the spring quarter, but shall attend meetings from the time of election until they take over their duties.

The President shall remain on the Board spring quarter in an advisory capacity.

Section 3: Qualification and duties of officers.

α. President

1. The president of Associated Women Students shall be of junior standing at the time of the regular election and shall have served as a

voting member of the Board one year previously. She shall have a scholastic average of at least C.

2. The president shall preside over all meetings of the Associated Women Students, the Executive Board and the Executive Council.
3. The president shall appoint chairmen of committees, appointments subject to approval by the Executive Board. The Big-Little Sister chairman, the Handbook chairman, and the Special Activities chairman are elected by the Executive Board from the candidates submitted by the women's living groups.
4. The president shall represent AWS at judicial Council when called upon.

b. Vice-President

1. The vice-president shall be of at least sophomore standing at the time of the regular election and shall have a scholastic average of at least a C.
2. The vice-president shall officiate in the absence of the president, and shall succeed to the office of president in the event that office is vacated.
3. The vice-president shall be chairman of the Judicial Board.

c. Secretary

1. The secretary shall be of at least sophomore standing at the time of the regular election and shall have a scholastic average of at least a C.
2. The secretary shall keep a record of the proceedings of AWS, of the Executive Board, and of the Executive Council.
3. The secretary shall take care of all correspondence of AWS, including IAWS correspondence.

d. Treasurer

1. The treasurer shall be of at least sophomore

standing at the time of the regular election and shall have a scholastic average of at least a C.

2. The treasurer shall make monthly reports to the Executive Board of all funds received and expended and all debts and balances as submitted to her by the auditor of the student organizations and in accordance with her own books.
3. The treasurer must sign all requisitions, contracts, and payments after they have been approved by the Board. Loans from the students' loan fund will be made by the president upon recommendations of the Associate Dean of Students and the Business Manager of the University.
4. The treasurer shall be in charge of primary and general elections.

Article VI Meetings

Section 1:

Meetings of the association shall be held at the discretion of the president or at the request of twenty-five members of the association.

Section 2:

Meetings shall be conducted in accordance with Roberts' Rules of Order.

Section 4:

Meetings shall be considered properly advertised if notices of such meetings appear in the Kaimin and are posted on the bulletin board one day before the meeting.

Article VII Elections

Section 1: Primary Election

- a. Primary election shall be held one week before the general election.

- b. All candidates for office must present a petition bearing ten signatures to the secretary of AWS not later than one week preceding the scheduled primary election.

The two candidates for each office receiving the highest number of votes in the primary election shall become candidates for office in the general election.

- d. The primary election shall be eliminated if there are only two petitions filed for each office.

Section 2: General Election

- a. The officers shall be elected for a period of one year at a regular general election the first week of March.

- b. A majority vote shall be required for election.

Section 3:

In the event of a vacancy in the office of vice-president, secretary, or treasurer, the offices shall be filled by a member of the Executive Board elected by a majority vote of the Board.

Article VIII

Finances

The finances of the association shall be supplied from an amount appropriated by Central Board according to its budget.

Article IX

Amendments

Section 1:

The Constitution may be amended by a majority vote of all members. This vote may be taken at a mass meeting or by polling the living groups.

Section 2:

Proposed amendments to the Constitution shall be posted at least five days before a mass meeting or shall be read to each living group one week prior to the voting.



How Is It Organized?

IAWS

The **Intercollegiate Association of Women Students** is the national organization of college women to which your AWS belongs. This group, composed of AWS's throughout the United States, functions to solve problems common to all collegiate women and correlates the many ideas supplied by its members so that each local AWS can apply these suggestions to their individual campus needs. A major part of this exchange of ideas comes at the National and Regional Conventions held on alternate years. Your AWS always sends delegates to these gatherings. Between conventions IAWS carries on an active Clearing House program in which each of its four regions are supplied with centers of information, so any individual school can secure from one source materials compiled from all schools on a particular phase of AWS work.

AWS

AWS is composed of an Executive Board, a Judicial Board, five committees, and you.

Executive Board is composed of the officers of AWS and a representative from each women's living group. This board meets every Monday afternoon at 4:30 p.m. to plan activities and to serve as your representative student government.

Judicial Board considers all infractions of hour regulations and is composed of the AWS officers and two roving representatives from the Executive Board. The council meets at 4:00 p.m. on Monday with the vice-president presiding.

Publicity Committee notifies women students of AWS events and makes poster and signs for all AWS activities.

Big-Little Sister Committee plans the Big-Little Sister program, including the party during Orientation Week and other activities planned throughout the year. Its goal is to help all new women students feel a part of MSU campus life.

Handbook Committee publishes and distributes this handbook to all new MSU coeds. In the spring this committee works with the AWS board in making revisions and corrections for the new committee.

Special Activities Committee is the organizing group for all AWS activities during the year. It is designed for those girls wanting to help with AWS work, but who want to concentrate their help at one period of the year. The chairman of this committee attends regular AWS board meetings and acts as co-ordinator for all these activities. Under this committee the following sub-committees can be applied for:

- Winter Carnival
- Interscholastic
- Style Shows
- Miss MSU Pageant
- Lantern Parade

Public Relations Committee sponsors activities which will establish better relations between AWS, the faculty, administration, and community of Missoula.

Applications for these committees are circulated every fall, and all women are invited to apply. This is a good way to be active in AWS and campus life.

AWS Calendar of Events



Fall Quarter

- Big-Little Sister program during Orientation Week
- Foreign Students Coffee Hour
- AWS Mixer
- AWS Big-Little Sister Coffee Hour
- AWS Christmas Benefit Party

Winter Quarter

- Miss MSU Pageant
- Winter Carnival
- Election of Officers
- Big-Little Sister Program
- AWS Coffee Hour—new students
- Philanthropic Project

Spring Quarter

- Regional or National IAWS Convention
- Interscholastic Weekend
- Lantern Parade
- AWS Scholarship awarded
- Executive Board picnic
- Big-Little Sister picnic
- AWS Mixer

Our Honored Traditions

MSU has many traditions which make college life dear to all of us. When taking part in helping to carry out these traditions, it is of prime importance to remember you only get out of them what you put into them. In years to come, long after graduation, you will reap benefits of the traditions put before you as an entering freshman coed.

Frosh Traditions . . .

Orientation Week—a time of getting acquainted with the campus, taking placement tests, and registering—is the first activity for new students. One of the first nights at the "U," a get-acquainted party for the big and little sisters who have been writing to one another all summer is planned by AWS. At this gathering campus organization prexies and representatives tell all about life on campus and inform the new students about honoraries plus other places to use their talents at school. The second Sunday away from home, AWS in conjunction with Spur and Mortar Board plans a tea for the big sisters and little sisters. This again gives you the opportunity to meet other freshmen and upperclass women.

One of the busy week's afternoons is taken up by painting of the M. Many buckets of whitewash cover not only the M but the coeds and fellows as well. Spurs and Bear Paws are on hand to guide the activity and to serve refreshments to the hard-working freshmen. All during the week, freshmen will be identified by their Frosh Beanies which are worn at all times and serve as the admission ticket to the week's climax, the Beanie Bounce.

Traditions for All of Us . . .

Homecoming is one of the most fun-packed weekends of the entire year. To honor its alums MSU puts its best foot forward. Activities include a freshman-sponsored bonfire on Friday night followed by a Grizzly pep rally, election of a homecoming queen, a parade made up of floats from all living groups, a football game on Saturday and a dance climaxing the entire weekend.

The highest spot for rivalry between MSU and MSC comes at the playing of the annual Bobcat-Grizzly Game. The game, played at Bozeman and Missoula in alternate years, is the cause of mass migration by train from one campus to the other.

Dad's Day football game honors all dads who witness the presentation of awards to the one traveling the farthest distance and the one who is the oldest alum.

Hello Walk, the section of sidewalk between Turner Hall and the Baby Oval is dedicated to friendship. Traditionally everybody greets everybody else with a friendly "hello" or "hi." Each year the Bear Paws repaint the hello's in various languages along the walk.

Annual Affairs . . .

Some of the most looked-forward-to social functions on campus which are presented every year include the **Foresters' Ball**, given by the woodsmen in Paul Bunyan's honor; the **Barristers' Ball** where the lawyers fete J. Learned Brow; the **Nite Club Dance**, presented by the music school in a night club atmosphere; the **Military Ball** sponsored by the R.O.T.C.; the **Sadie Hawkins Dance**,

given by the Spurs so that every Daisy Mae can catch her man; **Winter Carnival** and **Mardi Gras** with its carnival of fun for everyone.

At Main Hall . . .

Singing on the steps, or **SOS** is one of the most beloved of all MSU traditions. The songs, led by the Spurs and Bear Paws, form the background for many events, one of them the tapping of members of honoraries. SOS starts promptly at 7:30 p.m. At the beginning of the striking of 8:00, everyone remains silent until the eighth gong is heard. Then the students begin to sing softly, "Old College Chums" and walk away humming it—leaving a happy and friendly note hovering around the spires of Main Hall, the heart of MSU traditions.

In the Spring . . .

Interscholastic is the weekend during which Montana High School students gather at MSU to compete in athletic events, speech, dramatics, and journalism and get a taste of college life. Events of the weekend are: tapping of members of Mortar Board, Silent Sentinel, and Spurs at the **SOS, Song Fest**, bar-b-que, and variety show.

At the **Sig Alph Olympics**, each women's living group gets a chance to prove its skills in egg throwing, pie eating and the like. The **Sigma Chi Derby Day** finds the freshman women trying their best to sneak up to some elusive Sig to snatch the derby from his head.

Seniors Only . . .

When a Grizzly gets to be a senior, then and only then is he entitled to occupy Senior Bench located just inside the right entrance to the oval

and donated by the class of 1910. On the Saturday night before **Commencement**, upperclass women honor the graduating seniors with the **Lantern Parade**, another AWS sponsored project. The coeds march around the oval carrying lighted lanterns while the seniors, in caps and gowns, form a M in the center. "Montana, My Montana" is sung from the tower of Main Hall and MSU women respond with "Old College Chums." The Lantern Parade is one of the most inspiring traditions at MSU and a fitting tribute to the graduating seniors.

Small but Necessary . . .

All of these things are traditions of MSU, and there are many more that you will discover for yourself when you arrive and become a Grizzly—such as walking around the oval instead of across it, the band marching and practicing on the Clover Bowl day after day, the ROTC units parading on the Oval Monday evenings during Spring quarter, coffee in the Lodge between classes, the Foresters and Awards Convocations and Charter Day. These traditions enrich the days and years at MSU, creating memories that will remain a precious part of your life, living on in the hearts of the past, present, and future students of MSU.



"Miss Collegiate" is Active

Activities are available for you in every corner of our beautiful campus. You'll find the greatest enjoyment, where your interest lies. This is your opportunity to meet people, make close friends, have fun, gain experience and contribute to a worthwhile organization.

Alpha Lambda Delta

(Scholastic Honorary)

Freshman women who have maintained a grade point index of 3.5 (B plus) average fall and winter quarters are elected to Alpha Lambda Delta, national honorary which was founded at MSU by the local chapter of the senior scholastic honorary, Mortar Board. The active members encourage high scholarship among freshman women, and at a ceremony in the dorms, winter and spring quarters, present roses to those women having earned a 3.5 average for the previous quarter. Alpha Lambda Delta gives a book to the graduating senior with the highest scholastic average.

Angel Flight

Each fall, about 30 Freshman girls are chosen on the basis of personality and attractiveness for this AFROTC sponsored women's drill team. The group performs for various campus events, plus visiting major cities in the state.

Aquamajds—Swimming Activity

Aquamajds is a swimming honorary for women who are outstanding swimmers. New members are chosen by vote of the old members after try-outs during fall quarter. They present an annual water pageant in the spring and sponsor intramural and intercollegiate women's swim meets.

Our Church Groups

There is a church group on campus for you whatever your faith or denomination. Among these groups are Canterbury Club, Christian Science Organization, Desert Club, Newman Club, Roger Williams Fellowship, Lutheran Student Asscciation, Wesley Foundation, and University Campus Christian Fellowship.



Foreign Affairs

Foreign-minded students will find a source of information through personal contacts in the Cosmopolitan Club.

Junior Sponsor

Each year, 12 sophomore girls are chosen to be Junior Sponsors and counsel the freshman girls in the dorms for a period of three quarters beginning the Spring of their sophomore year. Choices are made on the basis of interest in people and in the University, scholarship and counseling ability and high personal standards.

ROTC K-Dettes

The K-Dettes are chosen each fall by the Army ROTC on the basis of appearance, charm, personality, and poise. These girls act as a hostess group to other ROTC groups and drill with the Army ROTC.

Women's "M" Club

Junior women having a "C" scholastic average and ten participation credits earned in three team sports, three individual sports, and four elective sports of which not more than two may be inter-seasonal sports are eligible to become members of the "M" Club, providing they meet the character and leadership standards set by the club. The "M" Club works with WRA, sponsoring several social affairs and play days.

Masquers

Masquers is a dramatics honorary which recognizes service and outstanding participation in the theatre. For membership, a student must earn 20 points (200 hours) to be pledged and 30 points to become an active. Those students who have



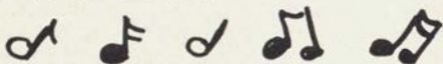
earned 100 points are given the title of Royale Masquer. This group participates in the Little Theatre Festival during Interscholastic, statewide tours, operettas in cooperation with the music school, major productions and one-act plays.

Anyone interested in drama is invited to tryout for the Masquer productions. Besides acting, one may usher, work in the ticket office, work with costumes and work backstage on makeup or stagecraft.

Mortar Board—Senior Honorary

Mortar Board members are definitely above average in scholarship, leadership, and service.

Their activities include giving the "Smarty Party," sponsoring the local Alpha Lambda Delta, working with Friends of the Library, selling Mortar Board calendars, and supervising Orientation Week. Mortar Board awards a cup to the freshman girl having the highest scholastic index during her freshman year.



So You Like Music . . .

Do you realize that MSU has the best school of music in the Northwest? The **Symphony Orchestra** gives quarterly concerts, and plays on special occasions, such as Commencement. The **Concert Band** has two formal concerts plus several small concerts and an occasional trip. Football season finds the **Marching Band** and **Twirlers** performing on the field. The **A Cappella Choir**, **University Chorus**, **Jubileers**, and other choral groups unite each spring and at Christmas time to present special programs.

Jubileers is a singing group composed of twenty of the best singers on campus. These vocalists not only have singing talent, but a tremendous amount of poise, personality, and stage character. This group furnishes entertainment for various campus events, besides making tours throughout the state. These talented singers come from various fields of study in the University.

Phi Kappa Phi

Phi Kappa Phi honors students in the upper ten per cent of the senior class and the upper five per cent of the junior class who are then eligible for membership in this national scholastic honorary. It includes faculty members and recognizes superior scholarship in all fields. This group publishes the "Grizzly Guide" and offers a scholarship to an outstanding Junior.

Politically Minded

You should join the Republican or Democrat Club if you are politically interested (as you should be) and have decided on "your" party.

Royaleers

The Royaleers are looking for the true lovers of the art of square dancing. Anyone may try out for admission and members find that their schedule of tours and exhibitions makes for much fun for all.

Ski Club

The Ski Club is open to any and all who like to ski—also those who like to try. Main events in the club include the Ski Weekend, an annual trip to Big Mountain, the intramural ski meet at Diamond, and many wonderful skiing days.

Spurs-Service Honorary

Tanan-of-Spur is an honorary for sophomore women. Each spring, thirty Spurs are chosen on a basis of dependability, sense of honor, unselfishness, sense of democracy, interest in and participation in college activities and a scholarship rating equal to at least a cumulative C-plus average or 2.5 on the 4-point system. Membership is a coveted honor and in the Spring as the selection date approaches there is heightened anticipation among the freshman women.

The purpose of Spurs as stated in the Constitution is thus:

1. To promote school spirit
2. To support all activities in which the Student Body participates
3. To foster among the women of the college or university a spirit of loyalty and helpfulness and to uphold all traditions of the college.

An important requirement for eligibility for Spurs is that a girl uphold University regulations which include not drinking during her freshman and sophomore years.

Like to Talk?

If soothing little arguments settle your nerves, you'll like the **Debate Team**. Any student is eligible to try out for a place on this team, which meets other collegiate groups in hot debate. Individual members successfully enter state oratorical and extemporaneous contests.

A group which adds variety and information to your campus life is **Montana Forum**. This is a faculty-student discussion group which meets at a weekly luncheon and discusses subjects of interest to the participants. It's an informal way to learn important and eye-opening facts.

Theta Sigma Phi

Theta Sigma Phi, an honorary for women majoring in journalism, sponsors Matrix Table. At the banquet an outstanding woman from each class and several local women are honored. The membership requirement is a cumulative overall average and a B average in journalism.

Wing Advisor

In the Spring, eight upperclass women are selected to serve as Wing Advisors for the following three quarters in Turner Hall. They are chosen on the basis of scholarship, service, and high standards. They are to be of service to the residents of Turner Hall and to assist and cooperate with the officers in regard to the total program of the hall.

What About Writing?

If you enjoy writing you may work on three publications available at MSU. **Venture** is an all-school magazine which features short stories, poetry, editorials, sketches and essays contributed by faculty and students and edited by students. **The Kaimin**, campus newspaper, is published four days a week by journalism students and is distributed to all students. The year book, the **Sentinel**, contains all the activities of the entire year at MSU—classes, dances, traditions, faculty. Members are chosen from interested students who apply for work in the annual's many divisions.

WRA

The Women's Recreational Association, known as WRA, through its intramural board, sponsors many athletic activities which provide you opportunities to participate in the sports of your choice as well as to meet many girls. For specific information regarding WRA activities, see the WRA Booklet.

Activities Balance

Your AWS helps Miss Collegiate balance her activity program. A point system has been developed by the AWS Board. This system restricts the number of responsible positions any one girl may hold at any one time and also makes it possible for several qualified girls to serve in the several positions available on campus. The following list of permanent A offices and B offices has been drawn up by the AWS Board. A girl may hold only one office on the permanent A list or two on the B list or one on each of the A and the B lists.

PERMANENT A

President of AWS
President of ASMSU
Editor of Kaimin
Business Manager of Kaimin
Editor of Sentinel
Business Manager of Sentinel
President of Spur
President of WRA
President of Panhellenic
President of Living Group
President of Mortar Board
President of Organized Independents
Chairman of Judicial Council

PERMANENT B

President of Alpha Lambda Delta
President of Theta Sigma Phi
President of departmental clubs
Representative to Central Board
Head of Cheer Squad
Coed Colonel for Angel Flight
Assistant Editor of Kaimin
Assistant Editor of Sentinel
Editor of Venture
Business Manager of Venture
Sports Manager of WRA
Chairman of Traditions Board
Chairman of Publications Board

Luck!
Just a Little
Bit of Luck!



The Importance of Studying

You are in college to learn. Granted, learning does come from social life too but the most important thing you do while in college is to attend classes and to study. There is definitely an art to studying efficiently and retaining a maximum of the matter read and learned. In order to help you begin an efficient program of studying, here are a few hints on efficient study habits. If developed properly in your first year at college, they will be valuable throughout your life.



Study Habits . . .

Study at a regular time and in a regular place. Commit yourself definitely in your schedule to "study history, chemistry, etc." rather than just to "study." Study as soon after a lecture class as possible; the notes will be retained longer if they are studied while fresh in your mind. Start the next class assignment while memory of it is still accurate. Jot assignments down carefully—what they are and when they are due. Utilize odd hours by studying instead of wasting them away, develop the habit of using them for studying the last class you finished and thus cramming will be a foreign activity to you. Use no more than two hours on any one course at a time. It is unwise to study two similar courses one right after another. Trade time—don't steal it. When unexpected events arise, plan immediately how to compensate for the study time lost.

Scientific Method . . .

You have heard of the Scientific Method in terms of science and research, but did you know that there is a Scientific Method of studying? First there is **self recitation**—you question and answer yourself on the subject you are studying. Before exams, put yourself in the professor's place and try to figure out what questions he will ask. This helps get the whole organization and over-all picture and relation of facts. **Spaced review**—reinforcing techniques which, if observed carefully, will make the taking of exams almost painless. Forgetting occurs rapidly, but immediate review or summerization of material just studied aids retention as do reviewing each subject every week and re-reading notes and text.

S Q 3R . . .

S Q 3R Method is an effective way to handle daily assignments. **Survey** the material you are going to cover and get an idea of what is going to be discussed—set an idea goal rather than a page goal. Jot down the ideas you expect to cover. **Question** yourself about the unit you are going to read. If the unit heading reads "Stages in the development of speech," turn it to "What are the stages in the development of speech?" In this way you will read to find out. **3R**—read, recite (repeat), review. **Read** the unit to get the answer to the question you have just asked. **Recite**—a few brief notes on what you have just read. **Review**—immediately the entire assignment and ask yourself questions to see if you have understood everything.

Need Some Money? \$ \$

AWS Loan Fund

The AWS Loan Fund, instituted in 1923 at MSU, was established to provide financial aid to women students. Any girl may borrow from the fund. The loan is approved by the AWS President and the Associate Dean of Students. There is over \$2,000 in this fund and any amount up to \$200 may be borrowed at 2% interest. The rate at which this money is paid back, i.e., monthly, quarterly, etc., depends upon the individual case.

AWS Scholarship

AWS offers the Cheadle-McKinley Memorial Scholarship of \$100 to an outstanding sophomore woman each spring. Any sophomore woman is eligible. The choice of the application is made by a scholarship committee composed of the Associate Dean of Students, the President of AWS, a faculty member, and a member of the Executive Board.

This scholarship was first awarded in 1955 and is presented in memory of Jane Cheadle and Marlene McKinley, outstanding students who have died within the last ten years.

Popularity Keys

Now just a note of advice in regard to the multitude of friendships you will be making. A "fair coed" should remember: Friendly attitude, willingness to co-operate and good manners are basic requirements. If you live in one of the campus dorms, you'll encounter many rules of discipline necessary to help a large group of girls living in harmony. You should realize that the University has an obligation to your parents and that there must be regulations for the good of the group. This means that you should co-operate, be friendly, natural and success will be yours. Here are seven keys to help you make and keep a great many friends at college.

1. Get to know and understand your dorm-mates. This calls for a sincere effort.

2. Act happy and be agreeable. This doesn't ask for you to lose individuality. Just keep your troubles to yourself until you get to know people better.

3. Study in one of the numerous study rooms if your roommate needs her sleep.

4. Return borrowed articles pressed and cleaned, in as good if not better condition as when you used them. Better still, don't borrow!

5. Keep your room clean and inviting for yourself and your guests. Tidiness applies not only to your own room but to others you visit. There is a good psychological effect upon studying in a clean, tidy room.

6. Remember that the phones are for everyone's use. Try to limit your calls to five minutes, even if he is "your fair gentleman."

7. Please do not brag about your high school accomplishments. What you do is much more important than what you say. Let your college record speak for itself.

Dating Dope . . .

Dating will be a big part of your life in college, and with a little common sense and a few sensible rules to follow, you can't go very wrong.

1. Never break a date with one man to go out with another. The first one will certainly not appreciate it, and the second one will probably end up mistrusting you, too.

2. Should you accept blind dates? Sure you will. Don't forget, he's taking a chance too, and you've got a fifty-fifty chance to meet a real nice guy. Just check with whoever arranges the date, and no doubt you'll have a good time.

3. When you're asked for a coke date, he means just that, a coke—not a hamburger, malt, or French fries. Maybe he's only got a dime, and besides, consider your figure.

4. Be a little bit lazy. Hand him your coat, and hesitate before doors. He'll get the idea and probably like it.

5. Try not to rattle on and on about the other men in your life. Your date, being reasonably normal, would probably prefer other subjects, and especially appreciate the chance to get in a few words in now and then also.

6. And while we're on the subject, young love will probably blossom, as young love has a habit of doing, but nothing is gained by demonstrating the fact all over the campus especially on the steps of the dorm at about 12:59 a.m. Remember, you'll see him tomorrow, and anyway, the house-mother would like to get a little "shut eye."

What to Wear?

If you're confused about what kind of costume is in season, the following chart (pages 37-38) will aid you. If you can't find the information on the chart, be safe and ask your Junior Sponsor or ask the other girls in your dorm.



If you're planning to purchase many new clothes for your college wardrobe—plan so that it revolves around two or three basic colors. This not only makes a more stylish you but also cuts down on your expenses for matching accessories. Don't go overboard and buy too much—

wait until you see what is in fashion.

If you aren't sure, try to lean toward the more conservative side. A plain coat can go anywhere, even for the evening; so can a smart, simple suit. A basic dress can be changed by beads or scarves. Plain pumps are never out of style. A raincoat or trench coat is needed for those drizzly days.

Beware! Don't let this stiff, formal chart for clothes discourage you, there's more. There are some outfits that you won't be wearing every day, or even once a week, but will be just the thing now and then. If you're not afraid of the casual look, bring your Bermuda shorts, socks and all, they're ideal for dormitory lounging.

For more conservative girls, pedal pushers and taper pants are "en vogue" for picnics, hiking, or just casual wear. If you're searching for that first tan, don't forget your swimming suit. You won't use it much during winter quarter, but come spring and the sun, you'll be glad you brought it.

Speaking of winter quarter, skiers—don't forget your ski togs. There are many fine ski areas close by for those weekend and Friday afternoon ski classes. Besides, what is a better way to spend a Saturday afternoon than on a toboggan or skating party?

For tennis fans, shorts and blouses are court garb and don't forget your racket and tennis balls. Spring quarter also sees lots of golf, hiking, and horseback riding, so be prepared for many good times.

One last hint—many of the functions you no doubt will be attending will be costume parties. There are circus parties, Hawaiian and French parties, the big Sadie Hawkins, and even a good old fashioned barn dance—plus many, many more. Come well prepared with costumes and plenty of ideas. You'll never regret having them.

Standards . . .

Your AWS Board throughout the year sets forth standards which are to be followed by the women at MSU. Many of these standards such as courtesy etiquette and manners are general good sense. In regard to dress, AWS upholds the following policies

Slacks may be worn on campus only on Saturdays or for sporting events. On Saturdays they

To Keep You

Event	Dress	Hat
Campus	Skirts, sweaters, blouses, simple dress. Jeans for Saturday.	Scarf, if needed
Athletic Event	School Clothes	Scarf, if needed
Concerts and Plays	Tailored or dressy dress	No
Shows	School clothes	No
Teas-Receptions	Tailored or dressy dress	Yes
Firesides, Exchange Dinners	Tailored dress, dressy dress or matching skirt and sweater	No
Mixers	School clothes	No
Coke Dates	School clothes	No
Dances:		
Formal	Short or long formal	No
Semi-formal	Cocktail dress to short formal	No
Informal	Tailored or dressy dress	No

DEFINITION OF TERMS . . .

Sport clothes: For spectator sports and clothes worn for similar events a casual skirt and sweater, suit or wool dress is recommended. If a girl is with a date, heels or stacked heels are worn while without a date flats are usually worn. For participating sports slacks and bermudas are permissible.

in Fashion . . .

Shoes	Purse and Gloves	Coat
Flats, tennis shoes, little heels and for winter, snow boots.	Purse, gloves or knit gloves	Warm for winter, rain-coat for spring
Flats, little heels	Purse, gloves or knit gloves	Yes
Heels	Purse, gloves	Yes
School shoes	Purse, gloves, or knit gloves	Yes
Heels	Yes, both	Yes
Heels or dressy flats	Probably not	When necessary
Flats or small heels	No purse	Yes
School shoes	No	Depends on weather
Heels	Yes	Yes
Heels	Yes	Yes
Heels	Yes	Yes

DEFINITION OF TERMS . . .

Church clothes: For church clothes suits, dressy or tailored dresses are recommended.

are acceptable at meals and the library. Trousers of any kind are never worn to class, to the Lodge, or downtown at any time.

Bermudas generally replace slacks in warmer weather but are not worn to meals at any time nor to the Lodge. Otherwise Bermudas may be worn at the same time as slacks.

Bathing suits are strictly for swimming parties or sun-bathing close to your dorm.

Housing . . .

Freshman women who do not live in their own homes while attending the University are required to live in the residence halls unless excused in special cases by the Associate Dean of Students. Upperclass women are required to live in women's residence halls or with approved student living groups unless excused as special cases by the Associate Dean of Students. Women students over 25 years of age must have the approval of the Associate Dean of Students to live in the residence halls.

Students living in the Residence Halls are required to take their meals in the University dining rooms in the Lodge (except in the few cases authorized by the Associate Dean of Students).

Do We Have Any Rules?

Your rules—made by you, changed by you, obeyed by you.

For the women students at Montana State University the AWS Executive Board has formulated the following rules, regulations and standards. Some of these policies have been in effect and enforced for many, many years and yet still today serve the same purpose for which they were established. Others have been passed as the need arises. All of the rules and regulations are enforced by the power and authority of the AWS Board, whose enforcement has been delegated by the Associate Dean of Students office. However, the Associate Dean, Miss Clow, is also our advisor and her help is often sought and always respected. So this is what will be expected of you, for they were made by you and therefore must be obeyed by you until for some worthwhile reason they will be changed by you.

Hours . . .

Freshman women students shall be in their homes by 10:30 p.m., Sunday, Monday, Tuesday, Wednesday, and Thursday. Upperclassmen have the same hours, with the exception of 11:00 p.m. Sunday. On each Friday, Saturday, and on Thursday of final week and nights preceding all University holidays, (Thanksgiving, Memorial Day, Track Meet) hours are 1:00 a.m.

Concert Hours are given to students attending concerts, plays, ball games, etc., on school nights, if these events last longer than the regular hours. However, you must return immediately to your house when the affair is over.

Late per is another type of special hour regulation. It is granted, under special circumstances involving departmental work, by the Associate

Dean of Students. This permission gives women the privilege of staying out past the regular hour.

Junior and Senior Privileges give junior and senior women the opportunity to stay out until 11:30 p.m. two times during the week (excluding Monday). For a senior to qualify for this privilege she must have a "C" average, 135 credits plus 6 P.E. credits, and have passed the University swimming test. To be entitled to junior per fall quarter, the girl must have junior standing, passed the University swimming test, an over-all 3.0 average and a 3.0 average the previous quarter. Juniors with a 2.5 over-all average and a 2.5 average fall quarter may take late per winter and spring quarters.

Serenade hours, given by the Associate Dean, are granted to girls on the night of their serenade. This permission allows the girl to stay out one hour past her serenade or until 12:00 p.m.

For all privileges involving late permission, have consideration for your housemother and let her know before 6:00 p.m. on the night you will be staying out late.

Signing out is a procedure to help locate you in cases of emergency. All women are required to sign in and out of their dormitory residence if leaving after 6:00 p.m., or if going off campus.

Men's Calling Hours—Men are allowed in women's residence between 12:00 and 1:00 p.m. by invitation and after 4 p.m. on Monday through Thursday; after 12:00 noon on Fridays and Saturdays; and after 9:30 a.m. on Sundays. Men may also be in the foyer for not more than 10 minutes to call on business between 1:00 and 4:00 p.m. They are not allowed in women's housing between 7:30 and 9:30 p.m. on Monday through Thursday nights. **College women may not enter men's residences without approved chaperones.**

But What is a Campus? . . .

A **Campus** is the usual penalty for an infringement of the above rules. This means that the girl is restricted to her living quarters from 7:00 p.m. until 7:00 a.m., during which time she may receive no guests. She must also report to her housemother at 7:00 p.m. on the night of her campus. Failure to do so, even if she is in her house, will result in an additional campus. Failure to take a campus on the night appointed by AWS results in four consecutive weekend campuses. A campus is usually taken on a Friday night, unless decided otherwise by the AWS Judicial Board. Campuses are given for one late of 15 minutes or more; two lates totalling 15 minutes in any one quarter; or three lates in one quarter whether they total 15 minutes or not. If you call or notify your housemother when you are unable to meet the specified hours, this will be taken into consideration by the board. If you have been late enough to warrant a campus your case will appear before the AWS Board. You will be given a late blank by your AWS representative which you are asked to fill out completely and state your reasons clearly so the Board can consider your case with the greatest fairness. You have the right at any time to request an interview with the Judicial Board to present your case.

1. Failure to turn in the late blank to your AWS representative in time for the late to be considered at the board meeting at 4:00 p.m. on the Monday following a late to be considered for a campus will result in an additional campus.

2. Girls are held responsible for returning from trips home, out of town visits, University sponsored weekends, etc., on time. It is up to each girl to be certain that her ride is dependable and

that they will return to MSU safely and with ample time to allow for difficulty.

3. If a girl is signing out of her living group and will be missing any classes, it will be necessary for her to sign out in Dean Clow's office. Failure to do so will result in a campus.

Explanation of No. 1—A girl must turn in the filled-in late slip in time for the first AWS meeting which follows the night of her late. (This, of course, is in the event that it is her third late or is over 15 minutes.)

Deferred campus may be granted by the AWS President. For each night deferred, an extra campus will be added. However, for reasons such as a house or dorm function, University authorized trips, etc., the President may defer the campus without added penalty.

Leaving Campus . . .

To go home—As a freshman you are allowed only three weekends per quarter for going home or on other trips. If you earn a 2.4 or above grade average fall quarter, you are exempt from



this rule the following quarter. A 2.0 or above grade average winter quarter exempts you from this rule spring quarter. When going home you must fill out a slip in the office that gives you permission to leave. You are

required to report back to your respective living group according to University hour regulations. If you are unable to return by the specified time, you must notify your housemother.

A woman student desiring to be absent from her University residence (residence hall, sorority,

or Synadelphic House) will be required to register such absence on the out-of-residence registration form with her head resident or housemother or the Associate Dean of Students and to sign in upon her return in accordance with University or AWS regulations and parents' permission.

1. Permission given by the head resident or housemother:

A. Women will be granted out-of-residence permission by registering **personally** with the head resident or housemother on weekends only (i.e. Friday and Saturday evening) under the following circumstances:

(1) To go home.

(2) To visit friends and relatives living out of Missoula upon receipt of a written invitation.

(3) To spend the night with parents living or visiting in Missoula.

B. According to AWS regulations women are expected to return to their residence by closing time. Special travel permission may be granted to students at the discretion of the housemother not more than **three times per quarter** to return on or before midnight in case of late bus or train. This permission will be granted only for travel by public conveyance and if a request is made **before** departure.

C. For absence necessitated by emergencies such as sudden illness or death in the immediate family.

D. Women going on hikes or automobile trips shall inform their respective housemothers as to the direction of such hikes or trips

when possible, and must sign out if they expect to be away more than two hours.

2. Permission given by the Associate Dean of students:

A. Women will be granted special out-of-residence permission by registering personally with the Associate Dean of Students under the following circumstances:

- (1) For absences on school days resulting in absence from class.
- (2) To visit friends and relatives **living in Missoula any night** including Friday and Saturday, and to remain in town during vacation.
- (3) For authorized university trips such as debate trips, music tours, religious camps, etc.
- (4) Ski trips and weekend house parties of university groups, fraternities, etc.

Policies . . .

Unless requested for consideration, lates will not be discussed before the board until they total a campus.

A rate of 35 miles per hour should be allowed for travelling time and for any emergencies which might arise when you are returning to your residence. In giving campuses, this rate will be considered when a girl returns late to her residence.

The above rules are applicable to regularly enrolled undergraduate women students during the regular academic year and Missoula women who come under University jurisdiction. All exceptions to the above rules and policies will be left to the discretion of the AWS Executive Board and the Standards Committee with the approval of the Associate Dean of Students.

Your Dorm . . .

Housing facilities for on-campus women include four residence halls: Brantly, Corbin, and North Corbin (better known as Triangle) for freshmen, and Turner Hall for upperclass women. These dorms are under the supervision of head residents. In the freshmen dorms, additional aid is given by the Junior Sponsors. These are junior women specially chosen for their scholarship and leadership who are always standing by to give pointers on government of the dorm, study habits, social life, and all of the hundreds of other questions posed by the new freshman women. Wing Advisors serve a similar purpose in Turner Hall.

If you prefer to live in a co-op, the Synadelphic House is open to all women whether freshmen or upperclassmen. The expenses and housework are shared, as well as all the fun.

Many of you will pledge one of the six social sororities, but you are required to live in the dorm for your first year and can move into your sorority house when you are a sophomore.

Wherever you decide to live while attending the University, you will find yourself a part of an organized social unit. This process of group living which comes as a new experience in your life will not only prove profitable in later years, but be a lot of fun right now too. Missoula girls can live either at home, in the dorm or in their sorority house. A girl living at home may enjoy the halls' social activities by paying a small fee to be a full-fledged dorm affiliate.

The Relationship of AWS To Judicial Council

In cases involving violations of AWS rules exclusively, such as hour violations, AWS has complete jurisdiction. In cases involving violations of University standards related to drinking exclusively, Judicial Council has complete jurisdiction. However, in cases where there are violations of both AWS rules and University drinking standards, a combined board selected from the officers of AWS and Judicial Council will function.

Since both of the organizations handle each case individually, the kind of board selected to handle the case will depend on the nature and extent of the matter involved. The AWS President is always an ex-officio member of Judicial Council.

And So . . .

The time to begin is now—whether you find yourself in the position of the unsure freshman or the wise-cracking upperclass woman.

It's never too late to go to a meeting of a certain club you've always wanted to join. Choose your activities as you do your clothes—with taste and forethought—as to how well you suit one another.

It is not necessary to be an expert in the activity, sport, or project that your club is organized to perform or carry out. It is much more important to you and the club if you have a sincere interest in what you are doing and the time to do it well.

The organizations, various activities honoraries and the elective officers are all here at MSU waiting for you, in addition to the opportunities for learning and securing a career. If you haven't yet, the time to begin is now.