

9-1-1973

1973 Grizzly Football Yearbook

University of Montana—Missoula. Athletics Department

Let us know how access to this document benefits you.

Follow this and additional works at: https://scholarworks.umt.edu/grizzlyfootball_yearbooks

Recommended Citation

University of Montana—Missoula. Athletics Department, "1973 Grizzly Football Yearbook" (1973). *Grizzly Football Yearbook, 1939-2018*. 21.

https://scholarworks.umt.edu/grizzlyfootball_yearbooks/21

This Yearbook is brought to you for free and open access by the Intercollegiate Athletics at ScholarWorks at University of Montana. It has been accepted for inclusion in Grizzly Football Yearbook, 1939-2018 by an authorized administrator of ScholarWorks at University of Montana. For more information, please contact scholarworks@mso.umt.edu.

GRIZZLY FOOTBALL '73



The University of Montana

Location: Missoula, Montana 59801

Chartered: February 17, 1893

Enrollment: 8,500

President: Robert T. Pantzer

Nickname: Grizzlies, Tips, Silvertips

Colors: Copper, Silver and Gold

Conference: Big Sky Athletic Conference

Commissioner John Roning

Box 1736

Boise, Idaho 83701

Home Field: Dornblaser Stadium (12,500)

Athletic Director: Jack Swarthout

Football Coach: Jack Swarthout 406-243-5331

Assistant Coaches: Bill Betcher
Ron Nord
John Smith
Wally Gaskins

SID: George Fultz 406-243-2522 Office
406-549-6757 Home

THE COVER

UM football coach Jack Swarthout has a watchful eye on his charges as junior quarterback Rock Svennungsen calls the signals during spring practice.

Editor: George Fultz

Photographer: Gordon Lemon

Table of Contents

Coach Jack Swarthout, Bill Betcher	2
Assistant Coaches	3
Coaches Thru the Years.....	4
The 1973 Outlook	5
Depth Chart	6
Squad Analysis	7
Player Profiles	8-21
The 1973 Roster	22-23
The 1973 Opponents	24-33
All-Opponents Records	34
1972 UM Stats	35
1972 Big Sky Stats	36
Football Records	37-41
The Conference, Past Champs	42
All-Conference, Grizzly Cup	43
Awards, All America, Pros	44
1973-74 Basketball Schedule	inside back
1972 Scores, 1973 Schedule	back

Press Information

PRESS PASSES.....

Requests for press box passes are to be filed with the Sports Information Director as soon as possible. Only those with passes will be admitted to the press box.

BROADCASTING.....

Three radio booths are available in the press box. One is reserved for the UM student station, another is for KYLT, the originating station for the Grizzly Radio Network. The third booth is for the visiting radio station.

SERVICES.....

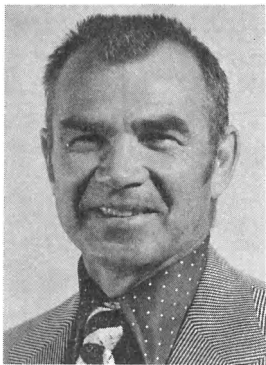
Depth charts, programs and pre-game information will be provided before the game. At halftime flash stats will be distributed. Shortly after the game complete stats, including play-by-play, will be made available.

LOCAL MEDIA.....

Jeff Herman, sports editor, The Missoulian
Bill Schwanke, sports director, KYLT Radio
John Campbell, sports director, KYSS Radio
Sports Director, KGMV Radio
Sports Director, KGVO Radio-TV
Sports, Montana Kaimin, University of Montana
Sports, KUFM Radio, University of Montana
Sports, KXLF-TV, Butte, 59701

Coach Jack Swarthout

Jack Swarthout, who came to the University of Montana to double as athletic director and head football coach in 1967, has recorded four winning seasons in his six years at the helm of his



alma mater and has compiled a 38-25 record. Only one other coach since the inception of football at the University in 1897 has registered more than two winning seasons. Doug Fessenden posted five winning marks in his ten seasons between 1934 and 1949. Montana fans had suffered through 17 seasons without a winning team before Swarthout guided the surprising 1967 squad to a 7-3 record. It was Montana's best season since the 7-1 mark recorded by the 1937 team and the first winning record since the 5-4 registered by the 1949 team. The Grizzlies were 2-7 in 1968, but rebounded with perfect 10-0 regular season marks in

1969 and 1970. Montana made post-season appearances in the Camellia Bowl in 1969 and 1970, losing to North Dakota State on both occasions. UM slipped to 6-5 in 1971 and had a devastating 3-8 season last year.

Swarthout was born in Prosser, Wash., on Feb. 23, 1920. He lettered in football, basketball and baseball in high school. He attended UM, earning a B.A. in political science in 1942, and was a starting end for the 1941 football team. He played quarterback and halfback on the 1939 and 1940 teams. He served four years in the army and was an assistant at UM during the 1946 season before coaching at Hoquiam High School (Wash.) until 1956. Swarthout was an assistant to Darrell Royal at Washington and Texas for three years, then coached Olympia High (Wash.) to a 50-14-2 nine-year record prior to coming to UM in 1967.

The Assistant Coaches

Bill Betcher



Bill Betcher joined the Montana staff in 1967. He is offensive line coach at UM. Betcher was born in Woodland, Wash., on February 16, 1939, and attended Washougal High School where he was a four sport letterman. After high school he attended the University of Oregon, but transferred to Central Washington State College following his freshman year. As a tackle for CWSC he earned Little All-America honors in 1961. He received his B.A. in physical education from CWSC in 1963 and then coached Castle Rock High (Wash.) to a 22-5 three-year record. In 1966 he served as line coach at his alma mater.

Ron Nord

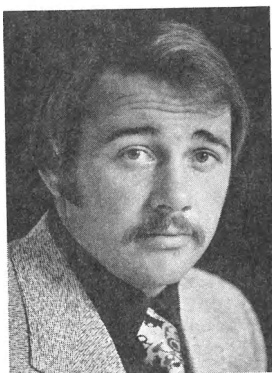
Ron Nord became a member of the UM football staff in March of 1968 after six years as head basketball coach at UM. In addition to being head scout for UM,

he coaches the defensive secondary and the offensive ends. Nord was born in Minneapolis on March 10, 1926. He graduated from the University of Wisconsin in 1950 with a B.S. in physical education-history. Nord coached football at Beaver Dam and Oshkosh high schools in Wisconsin after receiving his degree. He spent three years as football scout, recruiter and assistant basketball coach at his alma mater before coming to Montana. Nord has two sons who are active in UM athletics. Jeff is a member of the golf team and Mark is a guard on the varsity basketball team.



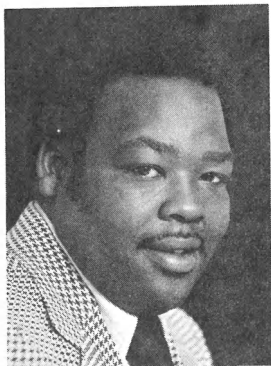
John Smith

John Smith joined the UM coaching staff in March of 1973. The former Weber State middle-linebacker will coach Montana's linebacking corps. Smith was born in Idaho Falls, Idaho, on November 15 in 1948. He is a 1967 graduate of Bonneville High School (Idaho Falls, Idaho) and a 1972 graduate of Weber State College with a B.S. in physical education. In 1971 he was a graduate assistant on the football staff at Weber State and served in the same capacity at UM during the 1972 season. Smith was Weber State's Big Sky Conference scholar-athlete as an undergraduate and a candidate for Academic All America honors.



Wally Gaskins

Wally Gaskins became a member of the UM football staff in March of 1973. He is responsible for coaching the defensive interior. Gaskins was born in Billings, Montana, on March 27, 1945. He attended Lewis and Clark High School (Spokane, Wash.), graduating in 1963. He entered the army after two years at Columbia Basin JC (Wash.). He served three years in Germany and a year in Viet Nam prior to his enrollment at UM in 1970. He played two seasons of varsity football for the Grizzlies and coached the junior varsity and assisted with the varsity in 1972. He earned his B.S. in physical education from UM in 1973.



Coaches Through the Years

YEAR	W	L	T	PCT.	COACH (ALMA MATER)	CUMULATIVE	PCT.
1897	1	2	3	.333	Fred Smith (Cornell)	1-2-3	.333
1898	3	2	0	.600	Sgt. B.F. Searight (Stanford)	4-4-3	.500
1899	1	2	0	.333	Guy Cleveland (Montana)	5-6-3	.455
1900	0	1	0	.000	Frank Bean (Wisconsin)	5-7-3	.417
1901	2	2	0	.500	Frank Bean (Wisconsin)	7-9-3	.438
1902	0	2	0	.000	Dewitt Peck (Iowa State)	7-11-3	.389
1903	2	5	0	.285	H.B. Conibear (Illinois)	9-16-3	.360
1904	3	2	0	.600	H.B. Conibear (Illinois)	12-18-3	.400
1905	2	3	0	.400	F.W. Schule (Wisconsin)	14-21-3	.400
1906	2	4	0	.333	F.W. Schule (Wisconsin)	16-25-3	.390
1907	4	1	1	.800	Albion Findlay (Wisconsin)	20-26-4	.435
1908	1	2	1	.333	Roy White (Iowa)	21-28-5	.429
1909	6	0	1	1.000	Roy White (Iowa)	27-28-6	.491
1910	3	2	1	.600	Robert Cary (Montana)	30-30-7	.500
1911	2	1	0	.667	Robert Cary (Montana)	32-31-7	.508
1912	4	3	0	.571	Lt. W.C. Philoon (Army)	36-34-7	.514
1913	2	4	0	.333	A.G. Heilman (Frnkln-Mrshl)	38-38-7	.500
1914	6	0	1	1.000	A.G. Heilman (Frnkln-Mrshl)	44-38-8	.537
1915	2	2	2	.500	Jerry Nissen (Wash. St.)	46-40-10	.535
1916	4	1	1	.800	Jerry Nissen (Wash. St.)	50-41-11	.549
1917	1	4	0	.200	Jerry Nissen (Wash. St.)	51-45-11	.531
1919	2	3	2	.400	Bernie Bierman (Minnesota)	53-48-13	.525
1920	4	3	0	.571	Bernie Bierman (Minnesota)	57-51-13	.528
1921	3	3	1	.500	Bernie Bierman (Minnesota)	60-54-14	.526
1922	3	4	0	.429	J.W. Stewart (Geneva)	63-58-14	.521
1923	4	4	0	.500	J.W. Stewart (Geneva)	67-62-14	.519
1924	4	4	0	.500	Earl Clark (Montana)	71-66-14	.518
1925	3	4	1	.429	Earl Clark (Montana)	74-70-15	.514
1926	3	5	0	.375	Frank Milburn (West Point)	77-75-15	.507
1927	3	4	1	.429	Frank Milburn (West Point)	80-79-16	.503
1928	4	5	1	.444	Frank Milburn (West Point)	84-84-17	.500
1929	3	5	1	.375	Frank Milburn (West Point)	87-89-18	.494
1930	5	3	0	.625	Frank Milburn (West Point)	92-92-18	.500
1931	1	6	0	.166	Bernard Oakes (Illinois)	93-98-18	.487
1932	2	7	0	.222	Bernard Oakes (Illinois)	95-105-18	.475
1933	3	4	0	.429	Bernard Oakes (Illinois)	98-109-18	.473
1934	2	5	1	.286	Bernard Oakes (Illinois)	100-114-19	.467
1935	1	5	2	.167	Doug Fessenden (Illinois)	101-119-21	.459
1936	6	3	0	.667	Doug Fessenden (Illinois)	107-122-21	.467
1937	7	1	0	.875	Doug Fessenden (Illinois)	114-123-21	.481
1938	5	3	1	.625	Doug Fessenden (Illinois)	119-126-22	.486
1939	3	6	0	.333	Doug Fessenden (Illinois)	122-132-22	.480
1940	4	4	1	.500	Doug Fessenden (Illinois)	126-136-23	.481
1941	6	3	0	.667	Doug Fessenden (Illinois)	132-139-23	.487
1942	0	8	0	.000	Clyde Carpenter (Montana)	132-147-23	.473
1945	1	4	0	.200	George Dahlberg (Montana)	133-151-23	.468
1946	4	4	0	.500	Doug Fessenden (Illinois)	137-155-23	.469
1947	7	4	0	.636	Doug Fessenden (Illinois)	144-159-23	.475
1948	3	7	0	.300	Doug Fessenden (Illinois)	147-166-23	.469
1949	5	4	0	.556	Ted Shipkey (Stanford)	152-170-23	.472
1950	5	5	0	.500	Ted Shipkey (Stanford)	157-175-23	.473
1951	2	7	0	.222	Ted Shipkey (Stanford)	159-182-23	.466
1952	2	7	1	.222	Ed Chinske (Montana)	161-189-24	.460
1953	3	5	0	.375	Ed Chinske (Montana)	164-194-24	.458
1954	3	6	0	.333	Ed Chinske (Montana)	167-200-24	.455
1955	3	7	0	.300	Jerry Williams (Wash. St.)	170-207-24	.451
1956	1	9	0	.100	Jerry Williams (Wash. St.)	171-216-24	.442
1957	2	7	0	.222	Jerry Williams (Wash. St.)	173-223-24	.437
1958	0	10	0	.000	Ray Jenkins (Colorado)	173-233-24	.426
1959	1	8	0	.111	Ray Jenkins (Colorado)	174-241-24	.419
1960	5	5	0	.500	Ray Jenkins (Colorado)	179-246-24	.421
1961	2	6	0	.250	Ray Jenkins (Colorado)	181-252-24	.418
1962	5	5	0	.500	Ray Jenkins (Colorado)	186-257-24	.419
1963	1	9	0	.100	Ray Jenkins (Colorado)	187-266-24	.413
1964	3	6	0	.333	Hugh Davidson (Colorado)	190-272-24	.411
1965	4	6	0	.400	Hugh Davidson (Colorado)	194-278-24	.411
1966	1	8	0	.111	Hugh Davidson (Colorado)	195-286-24	.405
1967	7	3	0	.700	Jack Swarthout (Montana)	202-289-24	.411
1968	2	7	0	.222	Jack Swarthout (Montana)	204-296-24	.408
1969	10	1	0	.909	Jack Swarthout (Montana)	214-297-24	.419
1970	10	1	0	.909	Jack Swarthout (Montana)	224-298-24	.429
1971	6	5	0	.545	Jack Swarthout (Montana)	230-303-24	.432
1972	3	8	0	.273	Jack Swarthout (Montana)	233-311-24	.428

THE GRIZZLY OUTLOOK

A veteran defense and one of the most explosive backfields ever assembled at the University of Montana are being counted on to atone for last year's disappointing 3-8 season.

In the three seasons prior to the disastrous 1972 campaign the Grizzlies compiled a 26-5 regular season record and appeared in two Camellia Bowl contests. The Grizzlies intend to bounce back in 1973.

The defensive alignment will contain as many as eight of last year's starters, including three linemen and two linebackers from a unit that limited opponents to 185 rushing yards per game. Over the last six games the yield was an impressive 147 ground yards each game.

All-conference second teamer Marc Kouzmanoff (6-2, 225) can make the big play from his defensive end slot and tackles Jim Leid (6-3, 235) and Rick Anderson (6-1, 230) are formidable forces inside. Letterman Walt Brett (6-5, 235) will replace all-conference Leo LaRoche at right defensive end. Tackle depth will be provided by transfer Larry Farnam and letterman Bob Enders. Letterman Steve Taylor and transfer Mark Wachsman will serve as backups at end.

All-conference Ron Rosenberg, a pro prospect and All America candidate, will be the middle-linebacker for the third straight season. He is a junior and has all the physical tools at 6-3 and 235 pounds. Curt Donner (6-3, 215) returns on Rosenberg's left and letterman Dave Manovich (5-11, 210) will start on the right flank. Sophomore John Buxton is a capable outside-linebacker and Greg Salo will again back up Rosenberg in the middle.

Three secondary backs, all with starting experience, return from last year's team and the spring search of junior college campuses netted three caliber athletes. The returnees are Dave Harrington (5-11, 170), Dean Evans (6-0, 190) and Steve Starkey (5-11, 175). Redshirt Glenn Schmasow (6-1, 185) is ticketed to replace Mick Dennehy—the Big Sky's leading pass interceptor last year—at free safety.

The offense is unproven, but two experienced quarterbacks, speedy halfbacks and some new wrinkles should revive an attack that was slowed by stacked defenses and inconsistent quarterback play in 1972.

Two halfbacks with enormous potential will key the ground game. Jim Olson (6-0, 195), the leading UM rusher in 1972, and Ken Williams (5-6, 155), a junior college All American, have speed and credentials. Olson gained 5.6 yards per carry last year and Williams gained 1399 yards in 10 games for Citrus College (Calif.).

However, Williams and Olson may have to share a backfield slot while Greg Erickson (5-9, 170) lays claim to a starting berth at halfback. Erickson, a transfer from Everett CC (Wash.), was the surprise of spring practice.

Two experienced quarterbacks, Rock Svennungsen and Van Troxel, are in the quarterback picture. Svennungsen (6-2, 190) has the better throwing arm, while Troxel (5-10, 170) is more of a running threat.

Transfer Bob Smith (5-11, 202) will battle freshman John Parker and letterman Jim Kautz for the fullback slot. Smith was impressive in the spring game.

The offensive line personnel are green. Kit Blue, an all-league selection at center, is the only returning starter. He is not physically overpowering at six-foot and 210 pounds, but has body strength and quickness. Reserve center Jerry Cooley would start for most Big Sky teams.

The leading candidates at guard are transfers Kim McReynolds (6-2, 230) and Bill Grigsby (6-2, 240), and letterman Ted Solomon (6-0, 235). Walk-on Eric Manegold (6-3, 230) was the bright spot at tackle during spring ball. He and transfer Randy Lynn (6-0, 240) are the probably starters.

Capable performers at split end and tight end emerged during spring ball. Letterman Kurt Dedrick (5-11, 175) has the edge over returning squadman Steve Carlson at wide receiver and redshirt Duane Walker (6-3, 210) will be backed by transfer Gig Stuart at tight end.

DEPTH CHART BEFORE FALL PRACTICE

OFFENSE

DEFENSE

LT
Lynn
Brick
Landini

LG
Grigsby
Solomon
Adams

RG
McReynolds
Morigeau
Ferriter

RT
Manegold
Border
Cleveland
Sullivan

TE
Walker
Stuart

C
Blue
Cooley
Zellick

SE
Dedrick
Carlson
G. Anderson
Spear

QB
Troxel
Svennungsen

LHB
Williams
Olson

FB
Smith
Parker
Kautz

RHB
Erickson
Storbakken
Ponzoha

LE
Kouzmanoff
Taylor

LT
Leid
Farnum

RT
R. Anderson
Enders
Gunderson

RE
Brett
Wachsman
Flowers

LOLB
Donner
Buxton

MLB
Rosenberg
Salo
Prigmore

ROLB
Manovich
Tweet

LCB
Starkey
Oglesbee

SS
Evans
Stark
Pedroza

FS
Schmasow
Ladd
Facey

RCB
Harrington
Hardy

Kicker--Turnquist

SQUAD ANALYSIS

Lettermen Returning	26
Lettermen Lost	18
Starters Returning	12
Starters Lost	11
Redshirts	2
Transfers	15
Seniors	16
Juniors	26
Sophomores	9
Freshmen	9

LETTERMEN LOST (18)

OFFENSE

Guards: Cliff Burnett, Barry Darrow
 Tackles: Jim Hann, Ron Richards
 Ends: Tom Bodwell, Glen Welch
 Backs: Tim Babish, Buddy Walsh, Jeff Hoffmann, Sparky Kottke

DEFENSE

Tackle: Gary Swearingen
 Ends: Greg Harris, Leo LaRoche
 Linebackers: Dennis Doyle, Terry Pugh, Rick Dodds
 Backs: Mick Dennehy, Terry Reynolds

LETTERMEN RETURNING (26)

OFFENSE

Centers: Kit Blue, Jerry Cooley
 Guard: Ted Solomon
 Tackle: Doug Cleveland, Tim Brick
 Ends: Kurt Dedrick, Duane Walker(1971)
 Backs: Jim Kautz, Jim Olson, Rock Svennungsen, Van Troxel
 Kicker: Bob Turnquist

DEFENSE

Tackles: Jim Leid, Bob Enders, Rick Anderson
 Ends: Walt Brett, Steve Taylor, Marc Kouzmanoff
 Linebackers: Curt Donner, Greg Salo, Ron Rosenberg, Dave Manovich
 Backs: Dean Evans, Rob Stark, Dave Harrington, Steve Starkey

REDSHIRTS (2)

OFFENSE

End: Duane Walker

DEFENSE

Back: Glenn Schmasow

TRANSFERS (15)

OFFENSE

Guards: Mike Adams, Bill Grigsby, Kim McReynolds
 Tackles: Richard Border, Randy Lynn
 End: Gig Stuart
 Backs: Greg Erickson, Bob Smith, Ken Williams, Dave Ponzoha

DEFENSE

Tackle: Larry Farnum
 End: Mark Wachsman
 Backs: Paul Pedroza, Mike Ladd, Sylvester Hardy

FRESHMEN (9)

OFFENSE

Guard: Dan Sullivan
 Tackle: Mike Ferriter
 Ends: Greg Anderson, Del Spear
 Back: John Parker

DEFENSE

End: Terry Flowers
 Linebackers: John Prigmore, Rod Tweet
 Back: Jim Oglesbee

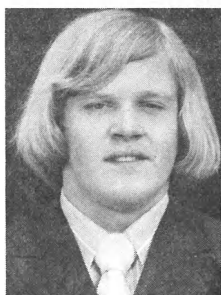
PRONUNCIATION GUIDE

Dedrick--(Dee drick)
 Facey--(Face ee)
 Kautz--(Kowtz)
 Kouzmanoff--(Kuz manoff)
 Leid--(Leed)
 Morigeau--(Mor ijoe)
 Ponzoha--(Pon zo ha)
 Salo--(Sailo)
 Schmasow--(Shmaw zo)
 Svennungsen--(Swen ung sen)
 Wachsman--(Wax man)
 Swarhout--(Swarth out)

— PLAYER PROFILES —

ON HAND FOR SPRING PRACTICE

MIKE ADAMS



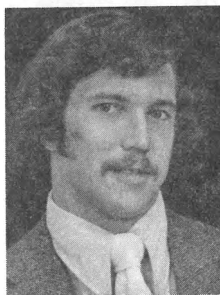
Offensive guard . . . 6-2 . . . 230 . . .
Sophomore . . . Newton, Iowa. Transfer
from Ellsworth JC (Iowa Falls, Iowa).
Missed spring practice with an injury.
Coaching staff feels he will be able to
play for Grizzlies. Sat out 1972 season.
Was all-conference for Ellsworth's fine
1971 squad. Ellsworth ranked fourth in
1971 JC poll. Undecided.

RICK ANDERSON



Defensive tackle . . . 6-1 . . . 230 . . .
Senior . . . Lacey, Washington. Steady
performer while rotating with Jim Leid
and graduated Gary Swearingen in
1972. Has two years of experience and
is expected to have fine senior year.
Is slated to start. Had good spring and
the loss of some weight improved his
quickness during the spring drills. All-
conference offense and defense at North
Thurston High. Speech Communication.

KIT BLUE



Center . . . 6-0 . . . 210 . . . Senior . . .
Olympia, Washington. Named to All
Big Sky first team last year. Top center
in the league. Not big by today's stand-
ards. Has superior quickness and upper
body strength that allows him to be a
very effective blocker. A good student.
Was all-city, all-state and Sunkist All
American at Miller High. Will be a
team leader in 1973. Physical Therapy.

RICHARD BORDER



Offensive tackle . . . 6-2 . . . 225 . . .
Junior . . . Salt Lake City, Utah. Slated
to be first-line backup at offensive
tackle. Transfer from Dixie College (St.
George, Utah). Earned all-conference in
Intermountain Collegiate Athletic Con-
ference. Dixie had fine 7-3 record in
1972. Honorable mention all-stater at
South High School. Pre-Law.

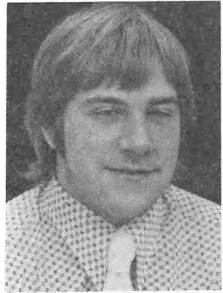
WALT BRETT

Defensive end . . . 6-5 . . . 235 . . .
Junior . . . Lake Tahoe, California. In
the process of developing into a great
football player. Has the physical tools.
Needs experience. Will probably start
for Montana in 1973. Linebacker as a
freshman in 1971 and has the speed
and agility necessary in quality defensive
ends. The type of player that will
improve with each game. History-Political
Science.



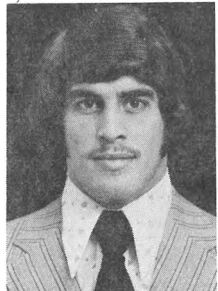
TIM BRICK

Offensive tackle . . . 5-10 . . . 212 . . .
Junior . . . Traverse City, Michigan.
Lettered as a Sophomore. Not big but
a courageous performer. Valuable
squadman. May find himself with prominent
role in 1973. Grizzlies are short
of experienced offensive linemen. Recreation.



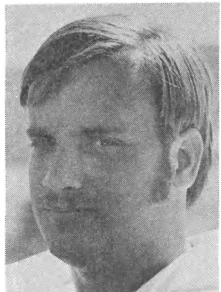
JOHN BUXTON

Outside-linebacker . . . 6-0 . . . 205 . . .
Sophomore . . . Owatonna, Minnesota.
Great find for the Grizzlies. Played
some at middle-linebacker as a freshman.
Had outstanding spring, especially
the Alumni Game, and has emerged as
strong candidate for starting berth. Big
Sky 190-pound wrestling champ last
winter. Will gain important experience
during the 1973 campaign. Business
Administration.



STEVE CARLSON

Split end . . . 5-11 . . . 175 . . . Junior
. . . Great Falls, Montana. Squadman in
1972. Candidate for starting honors in
1973. Small, but improved speed during
the off-season. Looked quick during
spring sessions. Has fine hands and is
better than average blocker. Will benefit
from UM's intent to utilize the pass
more in 1973. Education.

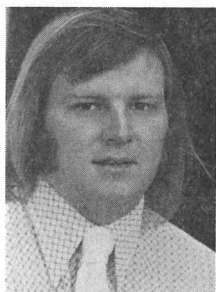


DOUG CLEVELAND



Offensive tackle . . . 6-4 . . . 230 . . . Senior . . . Butte, Montana. Part-time starter during the 1972 season. Newcomers may delegate him to a utility role in 1973. Has good size and blocking ability. Lacks speed and quickness. Was all-stater in football at Butte High. Also played basketball and participated in track. Education.

JERRY COOLEY



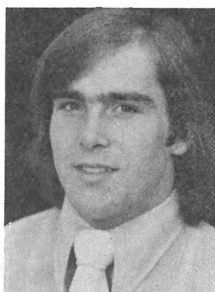
Center . . . 6-0 . . . 215 . . . Junior . . . Anacortes, Washington. Swarthout considers him the best second-team center in the conference. Backs up all-conference Kit Blue. Only a junior, so has 1974 to look forward to. Swarthout says, "We would not be hurt at all with Jerry in the lineup." Lettered in 1972. Was All-Northwest at Anacortes. Recreation.

KURT DEDRICK



Split end . . . 5-11 . . . 175 . . . Senior . . . Westminster, California. Backup and letterman at split end in 1972. Probable starter in 1973. Has speed and good hands. Played for Golden West College (Huntington Beach, Calif.) in 1971. Punted for Golden West. A versatile athlete with the ability to play in the defensive secondary. Health-Physical Education.

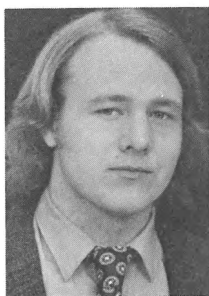
CURT DONNER



Outside-linebacker . . . 6-3 . . . 215 . . . Senior . . . Spokane, Washington. Returning starter. A steady performer with experience. Is expected to make strong showing for senior season. Moves to the ball well and is a good hitter. Won Weber game by recovering blocked punt in end zone. Physical Therapy.

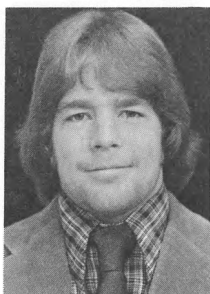
BOB ENDERS

Defensive tackle . . . 6-0 . . . 210 . . .
Junior . . . Kankakee, Illinois. Hard
working utility lineman. Lettered in
1972. Enjoys the game and puts forth
fine effort. Will not be on aid during
the 1973 season. Economics.



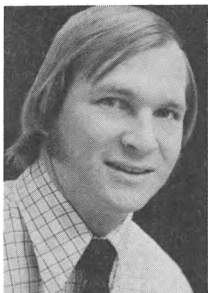
GREG ERICKSON

Offensive halfback . . . 5-9 . . . 170 . . .
Junior . . . Everett, Washington. Used
mostly as a receiver at Everett CC
(Everett, Wash.) last year. Earned start-
ing berth in spring practice. Could be
the surprise of 1973. Averaged 18 yards
per catch at Everett. Also led the North-
west JC league in kickoff and punt re-
turning. Physical Therapy.



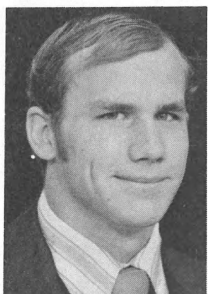
DEAN EVANS

Strong safety . . . 6-0 . . . 190 . . .
Senior . . . La Puente, California. Spent
two years in the service before enroll-
ing at UM last spring. Prior to entering
the service he played for Citrus College
(Azusa, Calif.). Has a nose for the ball
and gained needed playing time as a
regular in 1972. Likely starter at strong
safety. General.



TOM FACEY

Strong safety . . . 5-9 . . . 185 . . .
Sophomore . . . Lancaster, California.
As with most walk-ons, he loves to
play football. Will be squadman. Faces
tough competition in the secondary,
four lettermen, three transfers, a red-
shirt and a highly qualified freshman.
Biology.



STEVE GUNDERSON

Defensive tackle . . . 6-1 . . . 225 . . . Junior . . . Missoula, Montana. A walk-on for spring practice. Had creditable spring. Will provide interior depth for the 1973 squad. Can play offense also. Utility man. General.

BILL GRIGSBY

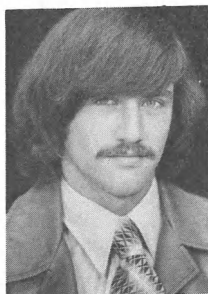


Offensive guard . . . 6-2 . . . 240 . . . Junior . . . Spokane, Washington. Swarthout classifies the Columbia Basin (Pasco, Wash.) transfer "a steady performer, who will be an asset to our offensive line." Was all-conference as Columbia Basin rolled up an 8-1-1 record and to the championship of the Washington JC circuit. Undecided.

SYLVESTER HARDY

Cornerback . . . 6-0 . . . 190 . . . Junior . . . Monrovia, California. All-league cornerback for Citrus College (Azusa, Calif.) last fall. Citrus won the Mission Conference. Has all the tools, quickness, speed, hitting ability and instinct. Could be the surprise of the secondary. General.

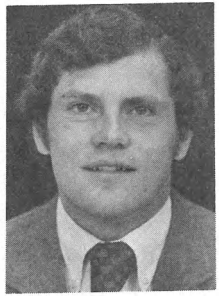
DAVE HARRINGTON



Cornerback . . . 5-11 . . . 170 . . . Senior . . . Portland, Oregon. Starter last year. Great things are expected in 1973. Came to UM from Mt. Hood JC (Gresham, Ore.). Punted for an average over 39 yards last year. Has great speed and tremendous quickness. Experience gained in 1972 should help. UM's punt returner last year, 6.2 average. Also had two interceptions. Physical Education.

JIM KAUTZ

Fullback . . . 6-2 . . . 215 . . . Junior . . . Worden, Montana. Moved to tight end for 1972 season and did fine job alternating with Tom Bodwell. Switched back to fullback during spring practice and proved to be a strong runner. Needs experience. Lettered four years in football, basketball and track at Huntley Project High. Political Science-History.



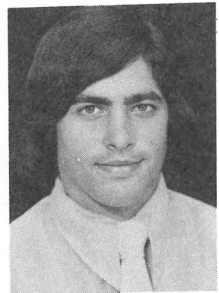
MARC KOUZMANOFF

Defensive end . . . 6-2 . . . 225 . . . Senior . . . Glen Ellyn, Illinois. Tremendous athlete with raw talent. Second team all-conference in 1972. Destined for higher distinction in 1973. Loves to play football. Coaching staff believes he could be one of the best players in the league. Twice an all-conference selection in three sports in high school—football, wrestling and golf. Wildlife.



MIKE LADD

Free safety . . . 5-10 . . . 180 . . . Junior . . . Garden Grove, California. Could be a starter in the wide-open battle in the secondary. Must beat out red-shirted Glenn Schmasow for starting slot. Captained Golden West College (Huntington Beach, Calif.) in 1972 and earned all-conference recognition in the Southern California Conference. Played at St. Anthony High School. Business Administration.



RICH LANDINI

Offensive guard . . . 5-11 . . . 220 . . . Sophomore . . . Missoula, Montana. All-conference defensive tackle at Loyola High in Missoula. Is inexperienced and will probably spend most of 1973 with the junior varsity. Lettered four times in football in high school and three times in track. Undecided.

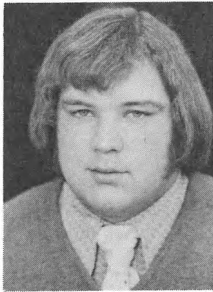


JIM LEID



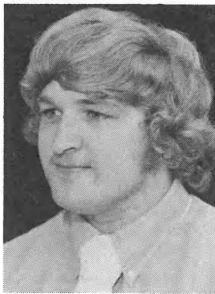
Defensive tackle . . . 6-3 . . . 235 . . . Senior . . . Waitsburg, Washington. Starter in 1972. Steady performer with exceptional quickness. Should be outstanding for a strong defensive unit this year. Four sport letterman in high school. All-conference football and basketball. Was redshirted during 1971 season. Education.

RANDY LYNN



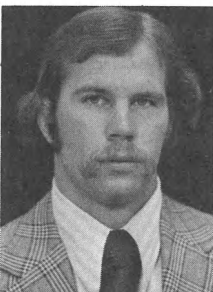
Offensive tackle . . . 6-0 . . . 240 . . . Junior . . . Omak, Washington. One of a number of JC players brought in for spring ball in an effort to shore up the offensive line. Probable starter. Came on strong as spring practice came to an end. Does not have great speed. Tenacious. All-conference at Spokane Falls CC (Spokane, Wash.). Business Administration.

KIM McREYNOLDS



Offensive guard . . . 6-2 . . . 230 . . . Junior . . . Olympia, Washington. Battling for starting spot in offensive line. Has physical ability to be fine performer. Does need experience. Transfer from Grays Harbor College (Aberdeen, Wash.). Honorable mention all-league and Grays Harbor's Most Inspirational Player. Team had 7-3 record and lost playoff to Columbia Basin for state title. Undecided.

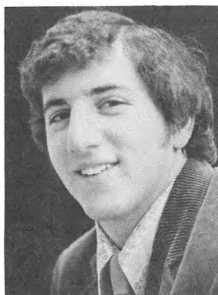
ERIC MANEGOLD



Offensive tackle . . . 6-3 . . . 230 . . . Sophomore . . . Glendive, Montana. What coaches dream of. Walk-on who grabbed starting berth at a troubled position. Advanced tremendously during spring practice and will start this fall. Could be another Barry Darrow, who was a walk-on, three-year starter at guard and all-conference. A raw talent. Will improve rapidly. Recreation.

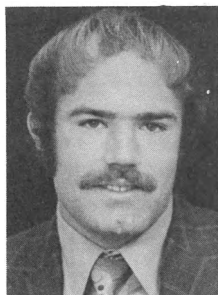
DAVE MANOVICH

Outside-linebacker . . . 5-11 . . . 210 . . . Senior . . . Butte, Montana. Began last year as a starter at running back for the Grizzlies. Switched to linebacker near the end of the season and showed promise. Looked good at defensive position during spring practice and nailed down a starting berth. Great athlete. All-state offense and defense at Butte High. Business Administration.



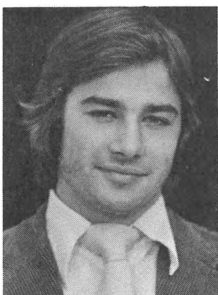
BOB MORIGEAU

Offensive guard . . . 6-2 . . . 230 . . . Junior . . . Polson, Montana. Doubles as a shot putter for the UM track team. Split his time between football and track last spring. Is improving and may develop into a fine football player. Three-year, three-sport letterman at Polson High School. Twice all-state in football. Sociology.



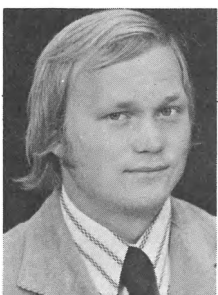
JIM OGLESBEE

Cornerback . . . 6-0 . . . 190 . . . Freshman . . . Missoula, Montana. Enrolled at UM for winter quarter and has four years of eligibility remaining. Swarthout says, "Jim is destined to be one of the finest defensive backs that the University has ever had. He has speed, strength, quickness and is a hard hitter." Political Science.



JIM OLSON

Offensive halfback . . . 6-0 . . . 195 . . . Senior . . . Edina, Minnesota. Montana's leading rusher in 1972 with 669 yards and 5.6 yards per carry. Has strength and speed. Ran 9.9 100-yard dash for UM track team in 1972. With JC All American Ken Williams on hand for spring practice Olson responded with a strong showing. Could be one of the best that Montana has had. Pro scouts are looking. Sociology.

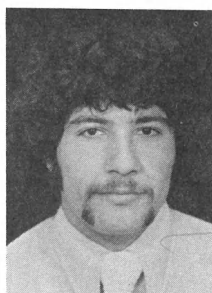


JOHN PARKER



Fullback . . . 6-0 . . . 220 . . . Freshman . . . Duxbury, Massachusetts. Enrolled at UM for spring quarter. Graduated from Thompson Academy in December of 1972. Works with weights and is very strong. Will see varsity action. All-star fullback for New England area. Most Valuable Back in 1971 and Most Valuable Player in 1972. Captain of team. Physical education.

PAUL PEDROZA

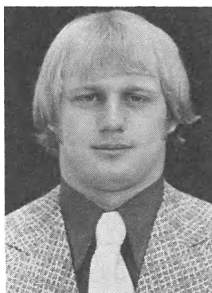


Strong safety . . . 6-1 . . . 190 . . . Junior . . . Azusa, California. Transfer from Citrus College (Azusa, Calif.). All-conference in the Mission Conference in 1971. Was in the service during the 1972 season. Missed spring ball. High school teammate of Southern California All America candidates Pat Haden (QB) and John McKay Jr. (SE). Physical Education.

DAVE PONZOHA

Offensive halfback . . . 6-1 . . . 190 . . . Junior . . . Lacey, Washington. Can play either offense or defense. Steady running back. Was leading the league in rushing at Grays Harbor (Aberdeen, Wash) last year before switching to secondary. Had averaged 100 yards a game and 6.7 per carry through the first half of the season. He was named all-conference at running back. General.

RON ROSENBERG



Middle-linebacker . . . 6-3 . . . 235 . . . Junior . . . Whitefish, Montana. UM'S ALL AMERICA CANDIDATE. 1973 will be his third season as a starter. All the tools are present and the pros are drooling. First team All-Big Sky last year as a sophomore. All-conference two years basketball and three years football in high school. All-state two years in football and All America as a senior. Education.

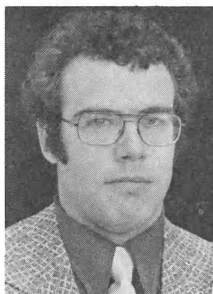
GREG SALO

Middle-linebacker . . . 6-2 . . . 220 . . . Junior . . . Butte, Montana. Has the dubious distinction of playing behind Ron Rosenberg. A good football player. Would start for many Big Sky teams. Very intelligent football player. Always popping up in the right place at the right time. Graduate of Butte High where he was an all-stater. Spent a year at UCLA. General.



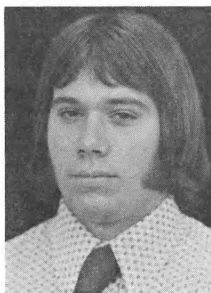
GLENN SCHMASOW

Free safety . . . 6-1 . . . 185 . . . Sophomore . . . Great Falls, Montana. Red-shirted last year. Is ticketed to replace Mick Dennehy—the Big Sky's top pass interceptor in 1972—at free safety. A good hitter with speed and quickness. Needs seasoning. All-stater in basketball and football at Great Falls High. Played one year of football in high school. Education.



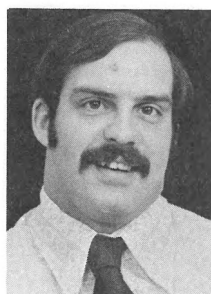
BOB SMITH

Fullback . . . 5-11 . . . 202 . . . Junior . . . Pasco, Washington. Transferred to UM from Spokane Falls CC (Spokane, Wash.). Was Washington JC league's top rusher with 950 yards in nine games. Averaged 5.5 yards, was the team captain, Most Inspirational Player, and all-conference at Spokane Falls. Missed most of spring ball with injury. Looked great in spring game and beat the Alumni team with 18-yard TD run in final quarter. Sociology.

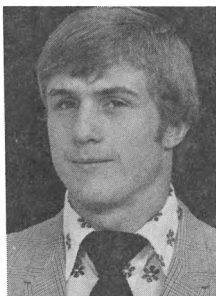


TED SOLOMON

Offensive guard . . . 6-0 . . . 235 . . . Senior . . . Spokane, Washington. Steady performer who started on-and-off during 1972. Candidate for starting berth in 1973. Played freshman ball at UM. Spent sophomore year at Spokane Falls CC (Spokane, Wash.) and last year with Grizzlies. One of the few returnees in the offensive line. Physical education.

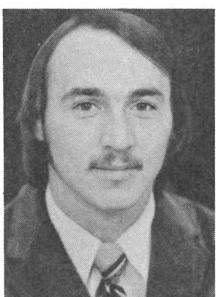


ROB STARK



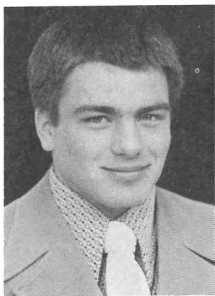
Strong safety . . . 6-3 . . . 195 . . . Senior . . . Polson, Montana. A very capable reserve. Hard hitter. Saw considerable action in 1972 and will again log plenty of playing time. Garnered all sorts of athletic honors at Polson High. Will probably compete in track next spring. Brother Tim was fine hurdler and Rob could be a first rate 440-yard hurdler. Physical Therapy.

STEVE STARKEY



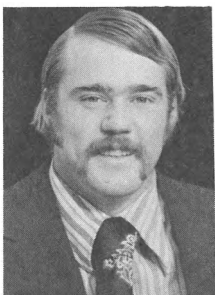
Cornerback . . . 5-11 . . . 175 . . . Senior . . . El Monte, California. Has good speed and is a hitter. Played several secondary positions in 1972 and started a number of games. Valuable player. One of a number of fine defensive backs that have come to UM from Citrus College (Azusa, Calif.). General.

ROLLIE STORBAKKEN



Offensive halfback . . . 5-9 . . . 170 . . . Sophomore . . . Mt. Vernon, Washington. Although lacking in size, Storbakken will play for the Grizzlies. He loves football and plays with great desire. Surprisingly effective during spring practice. Spent 1972 on the JV team. All-conference during junior and senior seasons at Mount Vernon High. Team was undefeated in 1970. Education.

GIG STUART



Tight end . . . 6-1 . . . 220 . . . Junior . . . Miami, Florida. Big fellow with exceptional speed. Needs experience and will play for Montana. Missed a great deal of spring practice, but coaching staff is so impressed with his potential that the walk-on was granted a scholarship. All-city for Palmetto High in Miami. Also Southern Florida all star. Physical Education.

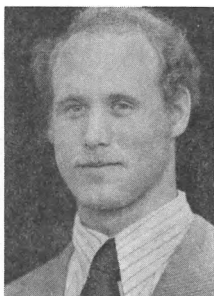
ROCK SVENNUNGENSEN

Quarterback . . . 6-2 . . . 190 . . . Junior . . . Shelby, Montana. Gained important experience as part-time starter last season. Very intelligent. Above average passing arm. Capable runner. Will share QB job in 1973 with Van Troxel. Coaching staff feels that either QB candidate can be a winner. Basketball and football star at Shelby High. Member of UM choir. Pre-Optometry.



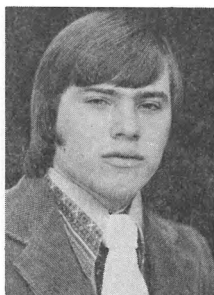
STEVE TAYLOR

Defensive end . . . 6-0 . . . 195 . . . Senior . . . Great Falls, Montana. One of those individuals without tremendous speed or strength who somehow gets the job done. Pushing for a starting assignment in his final year. The team will not be hurt with him in the lineup. Consistent performer. All-state football player at Great Falls High. Geology.



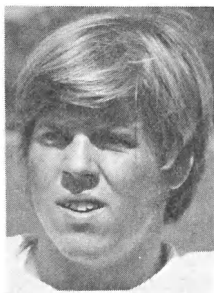
VAN TROXEL

Quarterback . . . 5-10 . . . 170 . . . Sophomore . . . Moscow, Idaho. Played great deal as freshman. Grizzlies were hurt by the inexperience in the quarterback ranks in 1972. Troxel and Svennungesen can be winners in 1973. A gutsy performer. Runs the option very well and is better than adequate passer. Played for a winner at Moscow High. His Dad, Ed Troxel, is track coach at the University of Idaho. Education.



BOB TURNQUIST

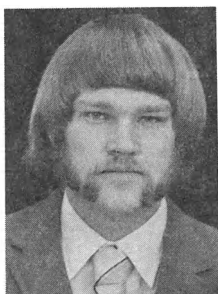
Kicker . . . 5-10 . . . 175 . . . Senior . . . Billings, Montana. Third year as the Grizzly place-kicking specialist. Booted 45-yard field goal last year. Generally accurate up to 40 yards. Connected on 16 of 20 PATs and three of eight field goal attempts in 1972. Kicked well in spring and should be more consistent in 1973. General.



MARK WACHSMAN

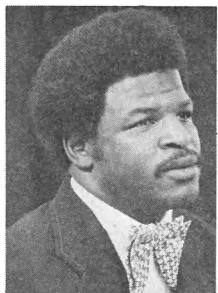
Defensive end . . . 6-5 . . . 245 . . . Junior . . . Cedar Falls, Iowa. Transfer from Indian Hills CC (Centerville, Iowa) Has size and is rugged competitor. Indian Hills ranked seventh defense-wise among junior colleges last year. Dependable performer. Football and track star at Cedar Falls High. Recreation.

DUANE WALKER



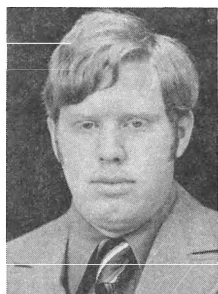
Tight end . . . 6-3 . . . 210 . . . Sophomore . . . Malta, Montana. Lettered and played a great deal as a freshman in 1971 season. Hurt last year and red-shirted. Has great hands and good speed. Blocking improved significantly in spring practice. All-state basketball player three times at Malta High and All-America as senior. Also grabbed off all-conference honors in football twice Physical Education.

KEN WILLIAMS



Offensive halfback . . . 5-6 . . . 155 . . . Junior . . . Houston, Texas. JC All American at Citrus College (Azusa, Calif.). Gained 1399 yards in 10 games, ran back punts and kickoffs. Durable despite small stature. Carried 25 times a game at Citrus. Super quick. Can go all the way on any play. Pushing Olson for starting job. Either back will be effective. Social Welfare.

JIM ZELICK



Center . . . 6-0 . . . 215 . . . Sophomore . . . Missoula, Montana. Developed rapidly in spring practice. Was a quarterback at Misoula Sentinel High School his senior year. A good athlete. In 1970 was member of Thurston High (Springfield, Ore.) team that captured District AAA Championship. Athletic background. Dad played in Rose Bowl. Business Administration.

FALL NEWCOMERS

GREG ANDERSON

Split end . . . 5-9 . . . 170 . . . Freshman . . . Chicago, Illinois. Lettered in four sports at Wawasee Prep in Chicago. Captained track, baseball and football teams. Could be a real surprise in 1973. All-state in 1972 and Most Valuable Player last two seasons. Business Administration.

LARRY FARNAM

Defensive tackle . . . 6-2 . . . 235 . . . Junior . . . Seattle, Washington. Two-time all-conference defensive tackle at Grays Harbor (Aberdeen, Wash.). Candidate for starting berth. Gives Montana needed depth in defensive interior. Grays Harbor took Western Division JC title last two years. Education.

MIKE FERRITER

Offensive tackle . . . 6-0 . . . 225 . . . Freshman . . . Butte, Montana. Best drive blocker in the state according to Swarthout. Butte Central has back-to-back undefeated seasons. Earned all-conference recognition the last two years. Bolsters offensive line depth. Sociology.

TERRY FLOWERS

Defensive end . . . 5-11 . . . 220 . . . Freshman . . . Cincinnati, Ohio. Could play for Grizzlies this fall. Named to Ohio All-State second team. Played for and captained the East-West Enquirer All-Star squad. Lettered four years in football. Undecided.

JOHN PRIGMORE

Middle-linebacker . . . 6-0 . . . 230 . . . Freshman . . . Winlock, Washington. Tremendous athlete and a future star at collegiate level. Participated in four sports in high school. All-conference footballer for three years. State heavyweight wrestling champ and a placer in the shot and discus at the state track meet. Undecided.

DEL SPEAR

Split end . . . 5-10 . . . 170 . . . Freshman . . . Cheney, Washington. Another all-around athlete. Excellent prospect. All-conference back. In track was league's high point man in 1972 and 1973. Fine hurdler and long jumper. Undecided.

DAN SULLIVAN

Offensive guard . . . 6-6 . . . 215 . . . Freshman . . . Butte, Montana. All-state in football at Butte High and all-conference in basketball. Could be the next in a string of huge offensive guards at UM. Very good student. Made Who's Who in American High School Football. Geology-Computer Science.

ROD TWEET

Outside-linebacker . . . 6-0 . . . 195 . . . Freshman . . . Power, Montana. Mr. Everything in athletics at little Power High School. Twice all-state in basketball and twice all-conference in football. Has speed and strength. Has been a winner throughout prep career. Power won state Class C basketball title in 1973. Undecided.

1973 GRIZZLY FC

<u>NAME</u>	<u>Pos</u>	<u>Ht</u>
Adams, Mike	OG	6-2
Anderson, Greg	SE	5-9
** Anderson, Rick	DT	6-1
** Blue, Kit	C	6-0
Border, Richard	OT	6-2
* Brett, Walt	DE	6-5
* Brick, Tim	OT	5-10
Buxton, John	OLB	6-0
Carlson, Steve	SE	5-11
** Cleveland, Doug	OT	6-4
* Cooley, Jerry	C	6-0
* Dedrick, Kurt	SE	5-11
** Donner, Curt	OLB	6-3
* Enders, Bob	DT	6-0
Erickson, Greg	HB	5-9
* Evans, Dean	SS	6-0
Facey, Tom	SS	5-9
Farnum, Larry	DT	6-2
Ferriter, Mike	OT	6-0
Flowers, Terry	DE	5-11
Gunderson, Steve	DT	6-1
Grigsby, Bill	OG	6-2
Hardy, Sylvester	CB	6-0
* Harrington, Dave	CB	5-11
* Kautz, Jim	FB	6-2
** Kouzmanoff, Marc	DE	6-2
Ladd, Mike	FS	5-10
Landini, Rich	OG	5-11
** Leid, Jim	DT	6-3
Lynn, Randy	OT	6-0
McReynolds, Kim	OG	6-2
Manegold, Eric	OT	6-3
** Manovich, Dave	OLB	5-11
Morigeau, Bob	OG	6-2
Oglesbee, Jim	CB	6-0
** Olson, Jim	HB	6-0
Parker, John	FB	6-0
Pedroza, Paul	SS	6-1
Ponzoha, Dave	HB	6-1
Prigmore, John	MLB	6-0
** Rosenberg, Ron	MLB	6-3
* Salo, Greg	MLB	6-2
Schmasow, Glenn	FS	6-1
Smith, Bob	FB	5-11
* Solomon, Ted	OG	6-0
Spear, Del	SE	5-10
** Stark, Rob	SS	6-3
* Starkey, Steve	CB	5-11
Storbakken, Rollie	HB	5-9
Stuart, Gig	TE	6-1
Sullivan, Dan	OG	6-6
* Svennungsen, Rock	QB	6-2
** Taylor, Steve	DE	6-0
* Troxel, Van	QB	5-10
** Turnquist, Robert	K	5-10
Tweet, Rod	OLB	6-0
Wachsman, Mark	DE	6-5
* Walker, Duane	TE	6-3
Williams, Ken	HB	5-6
Zellick, Jim	C	6-0

* Letters earned

FOOTBALL ROSTER

<u>Wt</u>	<u>CLASS</u>	<u>HOMETOWN</u>
230	Jr	Newton, Iowa
170	Fr	Chicago, Illinois
230	Sr	Lacey, Washington
210	Sr	Olympia, Washington
225	Jr	Salt Lake City, Utah
235	Jr	Lake Tahoe, California
212	Jr	Traverse City, Michigan
205	Soph	Owatonna, Minnesota
175	Jr	Great Falls
230	Sr	Butte
215	Jr	Anacortes, Washington
175	Sr	Westminster, California
215	Sr	Spokane, Washington
210	Jr	Kankakee, Illinois
170	Jr	Everett, Washington
190	Sr	La Puente, California
185	Soph	Lancaster, California
235	Jr	Seattle, Washington
225	Fr	Butte
220	Fr	Cincinnati, Ohio
225	Jr	Missoula
240	Jr	Spokane, Washington
190	Jr	Oakland, California
170	Sr	Portland, Oregon
215	Jr	Worden
225	Sr	Glen Ellyn, Illinois
180	Jr	Garden Grove, California
220	Soph	Missoula
235	Sr	Waitsburg, Washington
240	Jr	Omak, Washington
230	Jr	Olympia, Washington
230	Soph	Glendive
210	Sr	Butte
230	Jr	Polson
190	Fr	Missoula
195	Sr	Edina, Minnesota
220	Fr	Duxbury, Massachusetts
190	Jr	Azusa, California
190	Jr	Lacey, Washington
230	Fr	Winlock, Washington
235	Jr	Whitefish
220	Jr	Butte
185	Soph	Great Falls
202	Jr	Pasco, Washington
235	Sr	Spokane, Washington
170	Fr	Cheney, Washington
195	Sr	Polson
175	Sr	El Monte, California
170	Soph	Mt. Vernon, Washington
220	Jr	Miami, Florida
220	Fr	Butte
190	Jr	Shelby
195	Sr	Great Falls
170	Soph	Moscow, Idaho
175	Sr	Billings
195	Fr	Power
245	Jr	Cedar Falls, Iowa
210	Soph	Malta
155	Jr	Houston, Texas
215	Soph	Missoula



Game No. 1

Simon Fraser

Sept. 8

at Great Falls, MT.
8 p.m. (MDT)



CLANSMEN

1972 RESULTS (4-5)

SF		Opp	
61	Oregon Tech.	8	
7	California-Riverside	27	
0	Pacific University	20	
21	Whitworth College	26	
20	Whitman College	0	
12	at Puget Sound	34	
14	Montana State	35	
47	Western Washington	0	
21	Oregon Educ. College	20	

1973 SCHEDULE

Sept. 8	MONTANA
Sept. 15	Portland State
Sept. 22	at West. Washington
Oct. 6	at U. of Calgary
Oct. 20	at U. of Alberta
Oct. 27	Chico State
Nov. 10	Puget Sound
Nov. 17	Central Washington

Location: Burnaby, British Columbia

Enrollment: 4,400

Colors: Red and Blue

Nickname: Clansmen

President: Dr. Ken Strand

Athletic Director: W. Lorne Davies

Home Field: Empire Stadium (36,500)

SID: John Affleck (604-291-3313)

Conference: NAIA Independent

Series: First Meeting

FACTS ABOUT THE PERSONNEL

Lettermen Lost: 4

Lettermen Back: Offense 11
Defense 14

Starters Back: Offense 9
Defense 10

Top Returnees:

Rushing—T. Bailey (164 times, 707 yds.)

Passing—Passaglia (37 of 82, 3 TDs)

Receiving—Kaduhr (16, 336 yds., 3 TDs)

Scoring—T. Bailey (42 pts.)

The Clansmen are in the process of developing a strong football team. Last year a squad that was 70 per cent freshmen and sophomores compiled a 4-5 record. The 1972 team was troubled by injuries. Big Sky Champion Montana State thumped them 35-14 last year and the returnee laden Canadian club will be looking for revenge when it opens against Montana September 8.

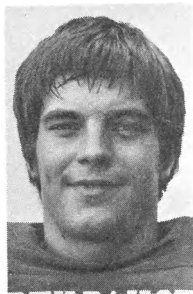


Jerry Olson
5 yrs., 28-17-2

Game No. 2
at
North Dakota

Sept. 15

Memorial Stadium
1:30 p.m. (CDT)



Mike Nyberg Sr., Defensive Back

1972 RESULTS (10-1)

ND	Opp	
48 Montana State	28	
42 Montana	14	
33 South Dakota	3	
28 at Augustana	16	
69 at Morningside	0	
51 at South Dakota State	21	
17 North Dakota State	22	
38 Northern Iowa	9	
48 Mankato State	14	
17 at Nevada-Las Vegas	13	
38 Cal Poly	21	
(Camellia Bowl)		

1973 SCHEDULE

Sept. 8	at Mankato State
Sept. 15	MONTANA
Sept. 22	at Minnesota
Sept. 29	Augustana
Oct. 6	Morningside
Oct. 13	South Dakota State
Oct. 20	at North Dakota State
Oct. 27	at Northern Iowa
Nov. 3	at South Dakota
Nov. 10	at Montana State

Location: Grand Forks, N.D.
Enrollment: 8,200
Colors: Green and White
Nickname: Fighting Sioux
President: Thomas J. Clifford
Athletic Director: L. R. Marti
Home Field: Memorial Stadium (10,000)
SID: Lee Bohnet (701-777-2234)
Conference: North Central
Conf. Record: 6-1
Series: UM leads 10-6-1

FACTS ABOUT THE PERSONNEL

Lettermen Lost: 13
Lettermen Back: Offense 14
 Defense 12
Starters Back: Offense 7
 Defense 6

Top Returnees:

Rushing—Dale Kasowski (31 times, 161 yds.)
Passing—Jay Gustafson (128 of 230, 1817 yds., 17 TDs)
Receiving—Ron Gustafson (26, 351 yds., 3 TDs)
Scoring—Jamie Gronowski (55 pts. by kicking)

The Fighting Sioux will be strong again in 1973 but will be hard put to match last season's 10-1 record and Camellia Bowl triumph. Top rusher and 27 touchdown performer Mike Deutsch graduated, as did North Dakota's second leading rusher. Quarterback Jay Gustafson should be able to keep the offense productive though. The defense has a veteran secondary. Big 10 foe Minnesota highlights the schedule.



Al Conover
1 yr., 5-5-1

Game No. 3

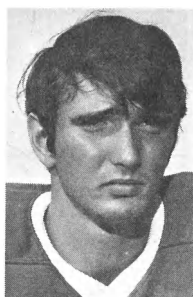
at

Rice

Sept. 22

Rice Stadium

7:30 p.m. (CDT)



Bruce Henley
Sr., Safety

1972 RESULTS (5-5-1)

RU		Opp	
14	Houston	13	
29	Clemson	10	
36	at Georgia Tech	36	
6	Louisiana State	12	
9	at Southern Methodist	29	
9	Texas	45	
6	Texas Tech	10	
23	at Arkansas	20	
20	at Texas A&M	14	
25	Texas Christian	21	
14	at Baylor	28	

1973 SCHEDULE

Sept. 15	at Houston
Sept. 22	MONTANA
Sept. 29	at Louisiana State
Oct. 13	Notre Dame
Oct. 20	Southern Methodist
Oct. 27	at Texas
Nov. 3	at Texas Tech
Nov. 10	Arkansas
Nov. 17	Texas A&M
Nov. 24	at Texas Christian
Dec. 1	Baylor

Location: Houston, Texas
 Enrollment: 2,300
 Colors: Blue and Gray
 Nickname: Owls
 President: Dr. Norman Hackerman
 Athletic Director: A. M. "Red" Bale
 Home Field: Rice Stadium (72,000)
 SID: Bill Whitmore (713-528-4141)
 Conference: Southwest
 Conf. Record: 3-4
 Series: First meeting

FACTS ABOUT THE PERSONNEL

Lettermen Lost: 21
 Lettermen Back: Offense 21
 Defense 12
 Starters Back: Offense 7
 Defense 5

Top Returnees:

Rushing—Gary Ferguson (160 times, 639 yds.)
 Passing—Bill McCabe (7 of 21)
 Receiving—Edwin Collins (42, 540 yds., 5 TDs)
 Scoring—Edwin Collins (32 pts.)

The Owls were up and down in 1972 and are seeking consistency in 1973. They have the personnel to be so. Rice did most of its damage via the pass in 1972 and the same should be true this year. Three fine receivers return and the quarterback will be Fred Geisler. Geisler is a transfer from Florida State where he was All American Gary Huff's backup in 1971. Safety Bruce Hensley is an All America candidate. The 1974 Super Bowl will be played at Rice Stadium.



Ed Peasley
2 yrs., 8-13

Game No. 4
at
**Northern
Arizona**

Sept. 29
Lumberjack Stadium
1:30 (MDT)



LUMBERJACKS

1972 RESULTS (3-8)

NAU	Opp	Score
7	North Dakota State	14
31	San Francisco State	10
17	at Montana	40
35	at N. Mexico Highlands	26
9	at Montana State	23
22	Trinity University	37
7	Weber State	23
15	at California-Northridge	14
21	Louisiana Tech	41
13	at Hawaii	20
12	Boise State	39

1973 SCHEDULE

Sept. 8	at North Dakota State
Sept. 22	at Weber State
Sept. 29	MONTANA
Oct. 6	at Louisiana Tech
Oct. 13	Texas Lutheran
Oct. 20	at Boise State
Oct. 27	California-Northridge
Nov. 3	Montana State
Nov. 10	at Nevada-Las Vegas
Nov. 22	at Idaho State

Location: Flagstaff, Arizona
 Enrollment: 10,000
 Colors: Blue and Gold
 Nickname: Lumberjacks
 President: Dr. J. Lawrence Walkup
 Athletic Director: Dr. Norm Johansen
 Home Field: Lumberjack Stadium (8,350)
 SID: To be named (602-523-2282)
 Conference: Big Sky
 Conf. Record: 0-4
 Series: UM leads 4-2

FACTS ABOUT THE PERSONNEL

Lettermen Lost: 31
 Lettermen Back: Offense 7
 Defense 7
 Starters Back: Offense 2
 Defense 6

Top Returnees:

Rushing—Milford Suida (74 times, 380 yds.)
 Passing—Chip Ellwanger (not provided)
 Receiving—Rick Wilson (not provided)
 Scoring—Gary Galati (Kicking specialist)

The Lumberjacks will depend heavily on junior college transfers during the 1973 season. NAU will mix the run and the pass equally. The defensive line will be solid, but the secondary is very thin. Only five secondary backs were on hand for spring ball. The Lumberjacks jump into the fire quickly with a tough road game at North Dakota State.



Joe Salem
8 yrs., 35-33-2

Game No. 5

**South
Dakota**

Oct. 6

Dornblaser Stadium

1:30 p.m. (MDT)



Gregg Erickson
Sr., Fullback

1972 RESULTS (9-1)

SD		Opp	
35	Montana	0	
35	at Idaho State	7	
3	at North Dakota	33	
21	Northern Iowa	7	
28	Drake	23	
41	at Morningside	6	
42	South Dakota State	27	
21	at Augustana	14	
35	North Dakota State	21	
35	at Mankato State	6	

1973 SCHEDULE

Sept. 1	Winona State
Sept. 15	at Tennessee Tech
Sept. 22	at North Dakota State
Sept. 29	at Northern Iowa
Oct. 6	AT MONTANA
Oct. 13	Morningside
Oct. 20	at South Dakota State
Oct. 27	Augustana
Nov. 3	North Dakota
Nov. 10	Mankato State

Location: Vermillion, S.D.
 Enrollment: 5,400
 Colors: Vermillion and White
 Nickname: Coyotes
 President: Dr. Richard L. Bowen
 Athletic Director: Dr. Carl L. Miller
 Home Field: Darwin Inman Memorial (10,000)
 SID: Ron Lenz (605-677-5331)
 Conference: North Central
 Conf. Record: 6-1
 Series: 5-5

FACTS ABOUT THE PERSONNEL

Lettermen Lost: 12
 Lettermen Back: Offense 12
 Defense 14
 Starters Back: Offense 5
 Defense 8

Top Returnees:
 Rushing—Gregg Erickson (195 times, 931 yds., 8 TDs)
 Passing—Mark Jenkins (3 of 17)
 Receiving—Dwight Duncombe (33, 611 yds., 3 TDs)
 Scoring—Booker Vann (86 pts.)

The Coyotes could repeat as North Central champs. They have a highpowered running attack returning in Erickson, B. Vann and Ron Trimble. The three accounted for over 2300 yards last year. However, an unproven sophomore will be the quarterback and graduation depleted the offensive line. The defense returns eight starters and may have to play a steadying role in the early part of the season. Duncombe is a crowd-pleaser and appeared on National TV as a result of his antics after scoring a touchdown.



Bob Griffin
1 yr., 7-3

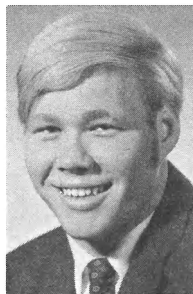
Game No. 6

Idaho State

Oct. 13

Dornblaser Stadium

1:30 p.m. (MDT)



Tony Ramonas
Sr., Off. Tackle

1972 RESULTS (7-3)

ISU	
14	at Wyoming
7	South Dakota
51	Portland State
21	at Eastern Michigan
14	Montana
35	Idaho
20	at Montana State
49	at Weber State
28	at Boise State
24	Drake

1973 SCHEDULE

Opp	Sept. 8	at Montana State
	30 Sept. 15	California-Hayward
	35 Sept. 22	at Cal Poly
	6 Sept. 29	at Nevada-Reno
	14 Oct. 6	Montana State
	7 Oct. 13	AT MONTANA
	7 Oct. 27	Weber State
	16 Nov. 3	at Portland State
	7 Nov. 10	Boise State
	31 Nov. 17	at Idaho
	21 Nov. 22	Northern Arizona

Location: Pocatello, Idaho
 Enrollment: 8,000
 Colors: Orange and Black
 Nickname: Bengals
 President: Dr. William E. Davis
 Athletic Director: Milton "Dubby" Holt
 Home Field: ASISU Minidome (12,000)
 SID: Glenn Alford (208-236-3651)
 Conference: Big Sky
 Conf. Record: 4-1
 Series: UM leads 9-5

FACTS ABOUT THE PERSONNEL

Lettermen Lost: 22
 Lettermen Back: Offense 10
 Defense 13
 Starters Back: Offense 5
 Defense 7

Top Returnees:
 Rushing—Rene Garnett (122 times, 632 yds.)
 Passing—Gary Wood (5 of 16)
 Receiving—Dave Schulz (25, 374 yds., 6 TDs)
 Scoring—Rene Garnett (48 pts.)

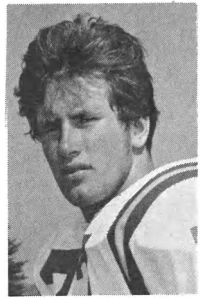
The Bengals are concerned with their defensive tackle and linebacker personnel, but feel optimistic about the rest of the team. Five fine running backs are on hand and super receiver Tom Hoffman has recovered from the knee injury that hampered him in 1972. The Bengals will have a new face at quarterback. Tom Lee, the Big Sky's leading passer a year ago, has graduated. The Bengals open on the road with a non-conference game at Montana State.



Sonny Holland
2 yrs., 11-10-1

Game No. 7
at
Montana State

Oct. 20
Reno H. Sales Stadium
1:30 p.m. (MDT)



Bill Kollar
Sr., Def. Tackle

1972 RESULTS (8-3)

MSU	Opp	
28 at North Dakota	48	
27 North Dakota State	24	
7 at Cal Poly	34	
17 Idaho	3	
23 Northern Arizona	9	
9 at Weber State	3	
37 Boise State	10	
16 Idaho State	20	
21 at Montana	3	
35 at Simon Fraser	14	
10 at Fresno State	6	

1973 SCHEDULE

Sept. 8	Idaho State
Sept. 15	at North Dakota State
Sept. 22	at Boise State
Sept. 29	Fresno State
Oct. 6	at Idaho State
Oct. 13	Weber State
Oct. 20	MONTANA
Oct. 27	at Idaho
Nov. 3	at Northern Arizona
Nov. 10	North Dakota
Nov. 17	at Santa Clara

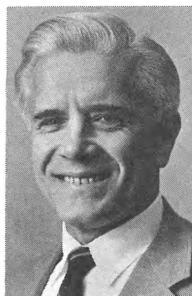
Location: Bozeman, Montana
Enrollment: 8,100
Colors: Blue and Gold
Nickname: Bobcats
President: Dr. Carl W. McIntosh
Athletic Director: Tom Parac
Home Field: Reno H. Sales Stadium
SID: Ken Nicholson (406-994-2721)
Conference: Big Sky
Conf. Record: 5-1
Series: UM leads 45-22-5

FACTS ABOUT THE PERSONNEL

Lettermen Lost: 10
Lettermen Back: Offense 18
 Defense 16
Starters Back: Offense 7
 Defense 8

Top Returnees:
Rushing—Wayne Edwards (168 times, 839 yds.)
Passing—Mike Dunbar (2 of 6)
Receiving—Sam McCullum (33, 587 yds., 12 TDs)
Scoring—Sam McCullum (74 pts.)

The Bobcats surprised everyone with their conference title in 1972, but will probably be tabbed as the favorites in 1973. Biggest loss is at quarterback and someone with little experience, most likely Mike Dunbar, will get the job. Big Sky MVP Bill Kollar heads the defense. Two all-conference defensive backs graduated and that may be the Bobcats biggest weakness. Cats must contend with road games at Boise State and Idaho State to repeat as Big Sky champs.



Tony Knap
5 yrs., 42-12

Game No. 8
at
Boise State

Oct. 27
Bronco Stadium
7:30 p.m. (MDT)



Don Hutt
Sr., Wide Receiver

1972 RESULTS (7-4)

BSC		Opp	
36	Nevada-Las Vegas	16	
21	Humboldt State	15	
49	Weber State	16	
21	at Cal Poly	26	
56	Nevada-Reno	19	
10	at Montana State	37	
28	at Montana	42	
33	at Portland State	7	
31	Idaho State	28	
39	at Northern Arizona	12	
21	Idaho	22	

1973 SCHEDULE

Sept. 15	at Idaho
Sept. 22	Montana State
Sept. 29	Portland State
Oct. 6	at Weber State
Oct. 13	at Nevada-Las Vegas
Oct. 20	Northern Arizona
Oct. 27	MONTANA
Nov. 3	at Nevada-Reno
Nov. 10	at Idaho State
Nov. 17	Cal Poly
Nov. 24	at California-Davis

Location: Boise, Idaho
 Enrollment: 9,700
 Colors: Blue and Orange
 Nickname: Broncos
 President: Dr. John B. Barnes
 Athletic Director: Lyle Smith
 Home Field: Bronco Stadium (14,500)
 SID: Jim Faucher (208-385-1285)
 Conference: Big Sky
 Conf. Record: 3-3
 Series: 1-1

FACTS ABOUT THE PERSONNEL

- Lettermen Lost: 20
- Lettermen Back: 25
- Starters Back: Offense 6
 Defense 7
- Top Returnees:
 - Rushing—Harry Riener (82 times, 447 yds.)
 - Passing—Ron Autele (79 of 163, 1522 yds., 19 TDs)
 - Receiving—Don Hutt (58, 824 yds., 9 TDs)
 - Scoring—Don Hutt (58 pts.)

The Broncos will have an explosive, pass-oriented attack. They have the Big Sky's second and third ranking passers on hand to battle for the starting quarterback job. They have honorable mention All America receiver Don Hutt to throw to. The team accumulated over 2650 yards through the air last year and the word from Boise is that the 1973 offense will better that figure. The Boise coaching staff is concerned with the defense, but seven 1972 starters are on hand.



Don Robbins
3 yrs., 16-17

Game No. 9

Idaho

Nov. 3

Dornblaser Stadium

1:30 p.m. (MST)



VANDALS

1972 RESULTS

UI	
17	Ohio University
10	at Weber State
3	at Montana State
14	at Washington State
31	Northern Illinois
7	at Idaho State
7	Pacific
7	at Utah State
31	Montana
16	at Western Michigan
22	at Boise State

Opp	
14	
26	
17	
35	
13	
35	
22	
51	
17	
27	
21	

1973 SCHEDULE

Sept. 8	at Texas-El Paso
Sept. 15	Boise State
Sept. 22	at Iowa State
Sept. 29	at Washington State
Oct. 6	Colorado State
Oct. 13	at Texas Christian
Oct. 20	Weber State
Oct. 27	Montana State
Nov. 3	AT MONTANA
Nov. 10	at Washington
Nov. 17	Idaho State

Location: Moscow, Idaho
 Enrollment: 7,200
 Colors: Silver and Gold
 Nickname: Vandals
 President: Ernest W. Hartung
 Athletic Director: Ed Knecht
 Home Field: New Idaho Stadium (18,000)
 SID: Bob Maker (208-885-6466)
 Conference: Big Sky
 Conf. Record: 2-3
 Series: Idaho leads 38-15-1

FACTS ABOUT THE PERSONNEL

Lettermen Lost: 18
 Lettermen Back: Offense 10
 Defense 9
 Starters Back: Offense 7
 Defense 8

Top Returnees:
 Rushing—Randy Ammerman (55 times, 266 yds.)
 Passing—Rick Seefried (49 of 102, 619 yds.)
 Receiving—Jay Curcio (19, 269 yds.)
 Scoring—Steve Tanner (31 pts by kicking)

The Vandals face a tough non-conference schedule in addition to meeting five conference opponents. Idaho's game with UM is the only conference game they have to play on the road. Vandals must avoid injuries in the early going if they are to have a fine season. Have excellent personnel and a number of returnees that make them as strong as any team in the league. Not eligible for conference title, but will have strong say in the outcome.



Dick Gwinn
First Year

Game No. 10
at
Weber
State

Nov. 10
Wildcat Stadium
1:30 p.m. (MST)



Jim Larson
Sr., Tailback

1972 RESULTS (5-5)

WSC	Opp	Score
26	Idaho	10
16	at Boise State	49
7	at Montana	12
3	Montana State	9
28	at Northern Arizona	7
30	Nevada-Las Vegas	0
7	Idaho State	49
30	Northern Michigan	18
	N.M. Highlands (forfeit)	
16	at Utah State	20

1973 SCHEDULE

Sept. 15	Utah State
Sept. 22	Northern Arizona
Sept. 29	Cal-Fullerton
Oct. 6	Boise State
Oct. 13	at Montana State
Oct. 20	at Idaho
Oct. 27	at Idaho State
Nov. 3	at South Mississippi
Nov. 10	MONTANA
Nov. 17	at Brigham Young U.
Nov. 22	at Eastern Michigan

Location: Ogden, Utah
 Enrollment: 9,000
 Colors: Purple and White
 Nickname: Wildcats
 President: Dr. Joseph L. Bishop
 Athletic Director: Dale L. Gardner
 Home Field: Wildcat Stadium (17,200)
 SID: Don Spainhower (801-394-8341)
 Conference: Big Sky
 Conf. Record: 2-4
 Series: UM leads 8-3

FACTS ABOUT THE PERSONNEL

Lettermen Lost: 23

Lettermen Back: Offense 21
 Defense 10

Starters Back: Offense 3
 Defense 8

Top Returnees:

Rushing—Jim Larson (74 times, 442 yds.)
 Passing—Both quarterbacks graduated
 Receiving—Dave Wheeler (1, 48 yds.)
 Scoring—Jim Larson (20 pts.)

The Wildcats backfield graduated and new coach Dick Gwinn will abandon the wishbone attack that Weber has employed. The new coach plans to put more emphasis on passing in 1973. Last year Weber attempted only 77 passes. The defense has a number of starters back and should be Weber's strength during the 1973 campaign. Gwinn terms the season "a rebuilding process." The Cats can be expected to improve as the season progresses.

All Opponents Record

	W	L	T
Arizona	1	3	0
Boise State	1	1	0
Brigham Young	5	11	0
British Columbia	2	0	0
California	0	1	0
Cal-Poly (San Luis Obispo)	2	0	0
Carroll	1	0	0
Colorado State	6	10	0
Denver	3	7	0
DePaul	1	0	0
Eastern Washington	6	1	0
Farragut Naval Base	0	2	0
Gonzaga	11	9	4
Hawaii	1	2	0
Houston	0	1	0
Idaho	15	38	1
Idaho State	9	5	0
Iowa	0	1	0
Mather Air Force Base	0	1	0
Montana State	45	22	5
Montana Tech	12	4	2
Nevada	0	1	0
New Mexico	4	10	0
North Dakota	11	6	1
North Dakota State	2	2	0
Northern Arizona	4	2	0
Northern Illinois	1	0	0
Oklahoma City	1	0	0
Oregon	0	4	1
Oregon State	0	11	2
Pacific University	2	0	0
University of the Pacific	2	5	0
Pocatello Marines	1	0	0
Portland	2	0	1
Portland State	6	1	0
Puget Sound	1	0	0
San Diego	0	1	0
San Diego Marines	0	1	0
San Francisco	2	1	1
San Jose State	0	2	0
South Dakota	5	5	0
South Dakota State	2	0	0
Southern California	0	5	0
Stanford	0	4	0
Syracuse	0	0	1
Texas Tech	1	3	0
Tulsa	0	1	0
U.C.L.A.	0	7	0
Utah	0	11	0
Utah State	9	25	0
Washington	1	16	1
Washington State	2	29	0
Weber	8	3	0
Western Illinois	1	0	0
Whitman	5	6	1
Williamette	0	1	0
Wyoming	0	12	0
Total (includes non-collegiate opp.)	233	311	24

UM Statistics

<u>TEAM</u>	<u>UM</u>	<u>OPP</u>	<u>RUSHING</u>	<u>TC</u>	<u>NET</u>	<u>Avg</u>	<u>LG</u>
First Downs	168	175	Olson	119	669	5.6	76
Rush	119	101	Kottke	92	424	4.6	33
Pass	39	64	Walsh	104	362	3.5	23
Penalty	10	10	Hoffmann	90	336	3.7	50
Rush Plays	611	534	Troxel	79	149	1.9	19
Yards Gained	2674	2349	Welch	16	132	8.3	37
Yards Lost	471	312	Svennungsen	75	99	1.3	26
NET RUSH	2203	2037	Manovich	16	37	2.3	10
Pass Attempts	165	223	D. Kautz	7	28	4.0	20
Pass Completions	61	93	J. Stark	4	9	2.3	7
Had Intercepted	18	21	Babish	9	-42	-4.7	2
NET YARDS PASS	927	1494	UM TOTAL	611	2203	3.6	76
Punts/Yards	67/2596	67/2214	OPP TOTAL	534	2037	3.8	63
Had Blocked	1	3					
Punt Average	38.7	33.0					
Fumbles/Lost	56/30	26/20					
Penalties/Yards	49/514	53/496	<u>RECEIVING</u>	<u>No</u>	<u>Yds</u>	<u>Avg</u>	<u>TD</u>
Touchdowns	21	35	Welch	26	386	14.8	0
Rush	16	23	Bodwell	16	289	18.1	0
Pass	3	11	Kottke	7	100	16.8	1
Other	2	1	J. Kautz	3	45	15.0	1
PAT Kick	16/20	30/33	Olson	3	40	13.3	0
PAT Run-Pass	0/1	2/2	Walsh	2	41	20.5	0
Field Goals	3/8	5/14	Hoffmann	2	25	12.5	1
Total Points	151	259	Manovich	2	11	5.5	0
			UM TOTAL	61	927	15.2	3
			OPP TOTAL	93	1494	16.1	11

<u>SCORING</u>	<u>TD</u>	<u>PAT</u>	<u>FG</u>	<u>Pts</u>
Hoffmann	7	0	0	42
Turnquist	0	16/20	3/8	25
Olson	4	0	0	24
Kottke	4	0	0	24
Troxel	2	0	0	12
J. Kautz	1	0	0	6
Donner	1	0	0	6
Rosenberg	1	0	0	6
Welch	1	0	0	6

<u>PASSING</u>	<u>PC/PA/I</u>	<u>Yds</u>	<u>Pct</u>
Troxel	34/75/7	524	.453
Svennungsen	21/73/8	337	.288
Babish	6/15/3	66	.400
Manovich	0/2/0	0	.000
UM TOTAL	61/165/18	927	.369
OPP TOTAL	93/223/21	1494	.417

<u>INTERCEPTIONS</u>	<u>No</u>	<u>Yds</u>	<u>Avg</u>	<u>LG</u>
Dennehy	10	109	10.9	41
Reynolds	3	34	11.3	34
Harrington	2	9	4.5	9
Donner	1	8	8.0	8
Doyle	1	0	0.0	0
Evans	1	20	20.0	20
Pugh	1	0	0.0	0
Rosenberg	1	2	2.0	2
Starkey	1	24	24.0	24
UM TOTAL	21	206	9.4	41
OPP TOTAL	18	85	4.7	35

<u>PUNT</u>	<u>No</u>	<u>Yds</u>	<u>Avg</u>	<u>LG</u>
Harrington	18	112	6.2	30
Starkey	4	4	1.0	9
Dennehy	3	13	4.3	11
UM TOTAL	25	129	5.2	30
OPP TOTAL	27	223	8.3	30

<u>PUNTING</u>	<u>No</u>	<u>Yds</u>	<u>Avg</u>	<u>LG</u>
Harrington	66	2596	39.3	65
UM TOTAL	67	2596	38.7	65
OPP TOTAL	67	2214	33.0	65

<u>KICKOFF</u>	<u>No</u>	<u>Yds</u>	<u>Avg</u>	<u>LG</u>
Welch	16	303	18.9	37
Olson	14	273	19.5	42
Manovich	4	47	11.8	21
J. Kautz	2	35	17.5	22
Darrow	1	1	1.0	1
Kouzmanoff	1	5	5.0	5
Rosenberg	1	11	11.0	11
Walsh	2	24	12.0	14
UM TOTAL	41	699	17.0	42
OPP TOTAL	26	702	27.0	95

Big Sky Statistics

School	CONFERENCE GAMES						School	ALL GAMES					
	W	L	T	Pct	Pts	Opp		W	L	T	Pct	Pts	Opp
MSU	5	1	0	.833	123	48	MSU	8	3	0	.727	230	174
ISU	4	1	0	.800	146	68	ISU	7	3	0	.700	263	174
Boise	3	3	0	.500	178	157	Boise	7	4	0	.636	345	240
Montana	3	3	0	.500	121	118	Weber	5	5	0	.500	163	174
Idaho	2	3	0	.400	77	113	Idaho	4	7	0	.363	165	278
Weber	2	4	0	.333	87	136	Montana	3	8	0	.272	151	259
NAU	0	4	0	.000	33	91	NAU	3	8	0	.272	211	275

School	TOTAL OFFENSE					School	TOTAL DEFENSE				
	Plays	Rush	Pass	Yds	Avg		Plays	Rush	Pass	Yds	Avg
Boise	840	2202	2670	4872	442.9	MSU	774	1257	1596	2853	259.4
MSU	816	2681	1085	3766	342.4	ISU	701	1784	1086	2870	287.0
ISU	758	1779	1737	3416	341.6	Montana	757	2037	1494	3531	321.0
Weber	626	2244	622	2866	318.4	Boise	827	2233	1328	3561	323.7
NAU	735	2218	1043	3261	296.5	Weber	641	1769	1254	3023	335.9
Montana	776	2203	927	3130	284.5	Idaho	830	1939	1954	3893	353.9
Idaho	750	1528	1498	3026	275.1	NAU	772	2695	1315	4010	364.0

School	RUSH OFFENSE					School	RUSH DEFENSE				
	TC	G	L	Net	Avg		TC	G	L	Net	Avg
Weber	549	2597	353	2244	249.3	MSU	504	1696	439	1257	114.3
MSU	644	2907	226	2881	243.7	Idaho	560	2387	448	1939	176.3
NAU	553	2537	319	2218	201.6	ISU	479	2147	363	1784	178.4
Montana	611	2674	471	2203	200.3	Montana	534	2349	312	2037	185.2
Boise	510	2630	428	2202	200.2	Weber	455	2049	280	1769	196.5
ISU	481	1976	297	1779	177.9	Boise	584	2672	439	2233	203.0
Idaho	455	1889	361	1528	138.9	NAU	588	3036	341	2695	245.0

School	PASS OFFENSE						
	Att	Comp	Int	Yds	TD	Pct	Avg
Boise	330	162	26	2670	29	.490	242.7
ISU	286	119	27	1737	15	.416	173.7
Idaho	295	122	30	1498	8	.413	136.2
MSU	172	71	14	1085	13	.412	98.6
NAU	182	61	17	1043	7	.335	94.8
Montana	165	61	18	927	3	.369	84.3
Weber	77	26	6	622	4	.337	69.1

School	PASS DEFENSE						
	Att	Comp	Int	Yds	TD	Pct	Avg
ISU	222	96	23	1086	3	.432	108.6
Weber	186	80	12	1254	7	.430	114.0
NAU	184	75	8	1315	8	.407	119.5
Boise	243	91	20	1328	11	.374	120.7
Montana	223	93	21	1494	11	.417	135.8
MSU	270	109	21	1596	9	.403	145.1
Idaho	270	132	19	1954	18	.488	177.6

Name	RUSHING					Game	Name	RECEIVING			
	TC	G	L	Net	Avg			Avg	No	Yds	TD
Edwards (MSU)	168	866	27	839	4.9	76.3	Hutt (BSC)	58	824	9	
Garnett (ISU)	122	661	29	632	5.2	70.2	Marshall (BSC)	55	1003	9	
Rogers (NAU)	147	775	20	755	5.1	68.6	McCullum (MSU)	33	587	12	
Rembert (UI)	122	625	67	558	4.6	62.0	Hotchkiss (MSU)	27	319	0	
Olson (UM)	119	694	25	669	5.6	60.8	Fisher (ISU)	26	458	2	
Butler (WSC)	90	573	28	545	6.1	60.5	Welch (UM)	26	396	0	
Davis (ISU)	171	618	14	604	3.5	60.4	Schulz (ISU)	25	374	6	
Suida (NAU)	74	381	1	380	5.1	54.3	Ault (UI)	22	284	2	

Name	PASSING						
	Att	Comp	Int	Yds	TD	Pct	Avg
Lee (ISU)	266	111	24	1588	13	.417	158.8
Autele (BSC)	163	79	14	1521	19	.484	138.3
McMillan (BSC)	136	74	7	1027	8	.544	114.1
McLean (MSU)	160	67	12	1003	12	.418	91.2

Name	TOTAL OFFENSE					Name	SCORING	
	Plays	Rush	Pass	Total	Avg		Name	Pts
Autele (BSC)	254	145	1521	1666	151.5	McCullum (MSU)	74	
Lee (ISU)	295	-92	1588	1496	149.6	Larkin (BSC)	65	
McLean (MSU)	320	533	1003	1536	139.6	Hutt (BSC)	58	
McMillan (BSC)	180	38	1027	1065	118.3	Marshall (BSC)	54	

Name	INTERCEPTIONS				Name	KICKOFF RETURNS		
	No	Yds	Avg	TD		No	Yds	Avg
Dennehy (UM)	10	109	10.9	0	Mack (UI)	13	363	27.9
Boston (MSU)	7	104	14.8	0	Van (NAU)	12	300	25.0
Larkin (BSC)	6	159	26.5	2	Stephens (BSC)	20	484	24.2
Spain (ISU)	6	80	13.3	0	Garnett (ISU)	11	247	22.5

Name	PUNTING			Name	PUNT RETURNS		
	No	Yds	Avg		No	Yds	Avg
Hunter (UI)	31	1471	47.5	Van (NAU)	7	89	12.7
Beller (ISU)	62	2532	40.8	Boston (MSU)	23	234	10.2
Brisbin (MSU)	56	2219	39.6	Hawkins (WSC)	5	43	8.6
Harrington (UM)	66	2596	39.3	Courage (UI)	9	77	8.5

UM Football Records

(from statistics available since 1948)

Individual Records

Single Season

RUSHING

MOST CARRIES
195, Steve Caputo, 1971
MOST NET YARDS
1253, Steve Caputo, 1971
HIGHEST AVERAGE PER CARRY
8.2, Dick Imer, 1953(86-703)
MOST TOUCHDOWNS RUSHING
9, Dick Imer, 1954

PASSING

MOST ATTEMPTS
184, Tom Kingsford, 1950
MOST COMPLETED
84, Tom Kingsford, 1950
MOST YARDS
1363, Tom Kingsford, 1950
HIGHEST COMPLETION PERCENTAGE
(minimum of 100 attempts)
.521, Earl Keeley, 1957(63-121)
MOST PASSES HAD INTERCEPTED
14, Tom Kingsford, 1950
MOST TOUCHDOWN PASSES
11, Ray Brum, 1969

TOTAL OFFENSE

MOST PLAYS
254, Tom Kingsford, 1950
MOST YARDS
1324, Ray Brum, 1969
(Rush-355; Pass-969)

PASS RECEIVING

MOST RECEPTIONS
32, Ray Bauer, 1950
MOST YARDS
563, Ray Bauer, 1950
MOST TOUCHDOWNS
5, Ron Baines, 1967
5, Doug Bain, 1969

PUNTING

MOST PUNTS
66, Dave Harrington, 1972
MOST YARDS
2596, Dave Harrington, 1972
HIGHEST AVERAGE
(minimum of 35 punts)
41.3, Lon Howard, 1968
(61-2517)

PUNT RETURNS

MOST RETURNS
42, Karl Stein, 1970
MOST YARDS
417, Karl Stein, 1970
HIGHEST AVERAGE
(minimum of 15 returns)
12.7, Ron Baines, 1968
(15-190)

KICKOFF RETURNS

MOST RETURNS
24, Warren Hill, 1966
MOST YARDS
560, Warren Hill, 1966
HIGHEST AVERAGE
(minimum of 15 returns)
27.2, Karl Stein, 1969(16-436)

PASS INTERCEPTIONS

MOST INTERCEPTIONS
11, Karl Stein, 1969
MOST YARDS RETURNED
207, Karl Stein, 1970

SCORING

MOST POINTS
67, Dan Worrell, 1969
MOST TOUCHDOWNS
10, Dick Imer, 1954
MOST FIELD GOALS
9, Dan Worrell, 1969
MOST CONVERSIONS
40, Dan Worrell, 1969

Single Game

RUSHING

MOST CARRIES
32, Arnie Blancas, Weber 1970
32, Steve Caputo, Weber 1971
MOST NET YARDS
227, Les Kent, Portland St. 1969
MOST TOUCHDOWNS RUSHING
4, Arnie Blancas, Weber 1970
LONGEST TOUCHDOWN RUN
79, Roy Malcom, Montana St. 1949

PASSING

MOST ATTEMPTS
32, John Schultz vs. Montana
State, 1959
32, Ray Brum vs. Weber, 1969
MOST COMPLETED
16, Tom Kingsford vs. Oregon, 1950
MOST YARDS
256, Tom Kingsford vs. Montana
State, 1950
MOST TOUCHDOWNS
4, Tom Kingsford vs. Eastern
Washington, 1950
HIGHEST COMPLETION PERCENTAGE
(minimum of 10 attempts)
.750, Tom Huffer vs. Idaho State,
1963 (12-16)
MOST PASSES HAD INTERCEPTED
5, John Vaccarelli vs. University
of Pacific, 1966
LONGEST TOUCHDOWN PASS
86, Gary Berding vs. Idaho, 1970

TOTAL OFFENSE

MOST PLAYS
43, Tom Kingsford, San Jose 1950
MOST YARDS
265, Tom Kingsford, Montana St.,
1950

PASS RECEIVING

MOST RECEPTIONS
8, Ray Bauer vs. Eastern Wash.,
1950
8, Larry Meyers, Idaho 1957
MOST YARDS
166, Rick Strauss, Portland
State, 1967
MOST TOUCHDOWNS
3, Ray Bauer, Eastern Washington,
1950
LONGEST TOUCHDOWN RECEPTION
86, Jim DeBord, Idaho 1970

PUNTING

MOST PUNTS
10, Bob Byrne, Colorado A&M 1951
10, Dewey Allen, Montana St. 1966
10, Lon Howard, S. Dakota 1968
10, Lon Howard, Utah State 1968
MOST YARDS
443, Lon Howard, Utah State 1968
HIGHEST AVERAGE
49.2, John Ochoa, Northern Arizona
1969 (6-295)

PUNT RETURNS

MOST RETURNS
7, Karl Stein, Portland St. 1970
MOST YARDS
126, Karl Stein, Portland St. 1970
LONGEST TOUCHDOWN
83, Ron Baines, U of Pacific 1967

KICKOFF RETURNS

MOST RETURNS
6, Ron Baines, Idaho 1968
MOST YARDS
155, Warren Hill, S. Dakota 1966
LONGEST TOUCHDOWN
70, Severn Hayes, Colorado A&M 1956

PASS INTERCEPTIONS

MOST INTERCEPTIONS
3, Mick O'Neill, Idaho 1968
3, Karl Stein, Northern Ariz. 1969
3, Karl Stein, Northern Ill. 1970
3, Tim Gallagher, South Dakota
State 1970
MOST YARDS RETURNED
108, Rich Unruh, University of
Pacific 1967
LONGEST TOUCHDOWN
56, Rich Unruh, University of
Pacific 1967

SCORING

MOST POINTS
24, Arnie Blancas, Weber 1970
24, Jeff Hoffmann, N. Arizona 1972
MOST TOUCHDOWNS
4, Arnie Blancas, Weber 1970
4, Jeff Hoffmann, N. Arizona 1972
MOST FIELD GOALS
3, Dan Worrell, S. Dakota St. 1969
LONGEST FIELD GOAL
50, Dan Worrell, S. Dakota St. 1969
MOST CONVERSIONS
7, Mick O'Neill, Portland St. 1967
7, Dan Worrell, Portland St. 1968
7, Dan Worrell, Northern Arizona,
Portland St., S. Dakota St. 1969

Team Single SeasonRUSHING

MOST CARRIES
728, 1970
MOST NET YARDS
3477, 1971
HIGHEST AVERAGE PER CARRY
5.6, 1954 (380-2114)
HIGHEST PER GAME AVERAGE
338.4, 1970

PASSING

MOST ATTEMPTS
215, 1968
MOST COMPLETED
105, 1949
HIGHEST COMPLETION PERCENTAGE
.500, 1949 (105-210)
HIGHEST AVERAGE YARDAGE
154.6, 1949
MOST PASSES HAD INTERCEPTED
22, 1948
FEWEST PASSES HAD INTERCEPTED
4, 1970
MOST TOUCHDOWN PASSES
15, 1969

TOTAL OFFENSE

MOST PLAYS
809, 1971
MOST YARDS
4548, 1969
HIGHEST PER PLAY AVERAGE
5.9, 1969 (772-4548)
HIGHEST PER GAME AVERAGE
454.8, 1969

FIRST DOWNS

MOST TOTAL FIRST DOWNS
215, 1970
MOST FIRST DOWNS RUSHING
171, 1970
MOST FIRST DOWNS PASSING
60, 1968
MOST FIRST DOWNS BY PENALTIES
17, 1968

PUNTING

MOST PUNTS
67, 1972
MOST YARDS
2633, 1968
HIGHEST AVERAGE
41.2, 1968 (64-2633)

PUNT RETURNS

MOST RETURNS
42, 1970
MOST YARDS
450, 1949
HIGHEST AVERAGE
17.9, 1954 (12-215)

KICKOFF RETURNS

MOST RETURNS
48, 1955
MOST YARDS
939, 1955
HIGHEST AVERAGE
21.6, 1969 (29-626)

SCORING

MOST POINTS
335, 1969
MOST TOUCHDOWNS
44, 1969
MOST FIELD GOALS
9, 1969
MOST CONVERSIONS
40, 1969

RUSH DEFENSE

FEWEST AVERAGE CARRIES ALLOWED
34.6, 1970
LOWEST PER RUSH YIELD
2.0, 1970 (346-699)
FEWEST YARDS ALLOWED
699, 1970

PASS DEFENSE

FEWEST ATTEMPTS ALLOWED
96, 1959
FEWEST COMPLETIONS ALLOWED
35, 1959
LOWEST COMPLETION PCT. ALLOWED
.362, 1960 (54-149)
FEWEST YARDS ALLOWED
415, 1959
FEWEST TOUCHDOWNS ALLOWED
4, 1963
MOST PASSES INTERCEPTED
28, 1970

TOTAL DEFENSE

FEWEST AVERAGE PLAYS ALLOWED
55.6, 1963
LOWEST AVERAGE PER PLAY YIELD
3.3, 1970 (648-2150)
FEWEST YARDS
2150, 1970
LOWEST YIELD PER GAME
215.0, 1970

FIRST DOWNS

FEWEST ALLOWED
98, 1949
FEWEST RUSHING
39, 1970
FEWEST PASSING
14, 1959
FEWEST BY PENALTIES
3, 1959 and 1964

RECOVERIES

MOST FUMBLE RECOVERIES
23, 1948
MOST TOTAL RECOVERIES
43, 1970 (Interceptions & Fumbles)

Team Single Game

RUSHING

MOST CARRIES
83 vs. S. Dakota St. 1970
MOST NET YARDS
471, vs. Portland St. 1968
MOST TOUCHDOWNS
6, vs. Portland St. 1967 & 1968
6, vs. S. Dakota St. 1969
6, vs. Idaho State 1971
HIGHEST AVERAGE PER CARRY
8.6, vs. North Dakota 1948

PASSING

MOST ATTEMPTS
38, vs. Idaho 1968
MOST COMPLETIONS
18, vs. Oregon St. 1949
MOST YARDS
276, vs. Montana St. 1950
MOST TOUCHDOWNS
4, vs. Eastern Washington 1950
4, vs. Idaho 1968
HIGHEST COMPLETION PERCENTAGE
.750 vs. Idaho State 1963
MOST PASSES HAD INTERCEPTED
6, vs. Utah St. 1948

TOTAL OFFENSE

MOST PLAYS
99, vs. S. Dakota St. 1970
MOST YARDS
649, vs. Portland St. 1968
HIGHEST AVERAGE PER PLAY
9.9, vs. N. Dakota 1948 (46-457)

FIRST DOWNS

MOST FIRST DOWNS
29, vs. Idaho 1969
MOST RUSHING FIRST DOWNS
22, S. Dakota St. 1969
MOST PASSING FIRST DOWNS
12, vs. Montana St. 1950
MOST FIRST DOWNS BY PENALTIES
5, five times, three times in 1968

PUNTING

MOST PUNTS
10, several times
MOST YARDS
443, vs. Utah St. 1968
HIGHEST AVERAGE
49.2, vs. N. Arizona 1967

PUNT RETURNS

MOST RETURNS
7, vs. S. Dakota St. 1969
7, vs. Portland St. 1970
7, vs. Tulsa 1972
MOST YARDS
126, vs. Portland St. 1970

KICKOFF RETURNS

MOST RETURNS
10, vs. Utah St. 1968
10, vs. Idaho 1968
MOST YARDS
224, vs. New Mexico 1959

SCORING

MOST POINTS
58, vs. Portland St. 1968
58, vs. S. Dakota St. 1969
MOST TOUCHDOWNS
8, vs. Eastern Washington 1950
8, vs. Portland St. 1967
8, vs. Portland St. 1968
MOST CONVERSION KICKS
7, vs. Portland St. 1967
7, vs. Portland St. 1968
7, vs. Portland St., Northern
Arizona, S. Dakota St. 1969

RUSH DEFENSE

FEWEST CARRIES
18, vs. British Columbia 1963
FEWEST YARDS
-10, vs. Weber 1970
FEWEST AVERAGE YARDS PER PLAY
-.04, vs. N. Arizona 1968

PASS DEFENSE

MOST INTERCEPTIONS
5, vs. Puget Sound 1950
5, vs. U of Pacific 1967
5, vs. Idaho St. 1967
5, vs. Portland St. 1970
5, vs. North Dakota 1971
5, vs. Idaho State 1972
LOWEST COMPLETION PERCENTAGE
(minimum of 15 attempts)
.179, by Montana St. 1971 (5-28)
MOST YARDS INTERCEPTIONS RETURNED
108, vs. U of Pacific 1967

TOTAL DEFENSE

FEWEST PLAYS ALLOWED
27, vs. British Columbia 1963
FEWEST YARDS ALLOWED
28, vs. Utah St. 1950
LOWEST AVERAGE PER PLAY ALLOWED
.68, vs. Utah St. 1950

Career Football Records

RUSHING

MOST CARRIES
355, Steve Caputo 1969-71
MOST NET YARDS
2076, Steve Caputo 1969-71

PASSING

MOST ATTEMPTS
333, Tom Kingsford, 1948-50
MOST COMPLETIONS
155, Tom Kingsford, 1948-50
MOST YARDS PASSING
2296, Tom Kingsford, 1948-50
MOST TOUCHDOWNS
20, Ray Brum, 1968-69
MOST PASSES HAD INTERCEPTED
25, Tom Kingsford 1948-50

INTERCEPTIONS

MOST INTERCEPTIONS
21, Karl Stein, 1969-70

PASS RECEIVING

MOST RECEPTIONS
76, Ray Bauer, 1948-50
MOST YARDS
1250, Ray Bauer, 1948-50
MOST TOUCHDOWN RECEPTIONS
9, Ray Bauer, 1948-50

SCORING

MOST POINTS
180, Dan Worrell, 1968-70
MOST TOUCHDOWNS
17, Dick Imer, 1953-54
MOST FIELD GOALS
26, Dan Worrell, 1968-70
MOST CONVERSION KICKS
102, Dan Worrell, 1968-70

Single Season Lists

Career Totals Lists

RUSHING

Yr Yds

1. Steve Caputo	1971	1253
2. Les Kent	1969	972
3. Terry Dillon	1962	892
4. Dick Imer	1954	889
5. Arnie Blancas	1970	855
6. Bryan Magnuson	1967	818
7. Paul Connelly	1965	753
8. Casey Reilly	1971	712
9. Arnie Blancas	1969	709

RUSHING

1. Steve Caputo	2076 yards
2. Arnie Blancas	1604 yards
3. Dick Imer	1592 yards
4. Terry Dillon	1569 yards
5. Paul Connelly	1348 yards
6. Jeff Hoffmann	1345 yards
7. Bob Byrne	1313 yards
8. Casey Reilly	1284 yards

SCORING

Yr Pts

1. Dan Worrell	1969	67
2. Dick Imer	1954	64
3. Dan Worrell	1970	60
4. Pat Dodson	1960	54
5-7. Terry Dillon	1962	50
Arnie Blancas	1970	50
Bob Turnquist	1971	50
8. Dick Imer	1953	47
9. Dan Worrell	1968	46

SCORING

1. Dan Worrell	180 Pts
2. Dick Imer	111 Pts
3-4. Terry Dillon	96 Pts
Casey Reilly	96 Pts
5. Pat Dodson	92 Pts
6. Jeff Hoffmann	90 Pts
7. Arnie Blancas	88 Pts
8. Steve Caputo	84 Pts
9. Bob Turnquist	75 Pts

RECEIVING

Yr Yds

1. Ray Bauer	1950	563
2. Doug Bain	1969	473
3. Terry Hurley	1955	431
4. Glen Welch	1972	386
5. Al Luis	1968	371
6. John Lands	1959	352
7-8. Dennis Meyer	1957	349
John Lands	1959	349
9. Tom McMahon	1970	303

RECEIVING

1. Ray Bauer	1250 yards
2. John Lands	701 yards
3. Tom McMahon	565 yards
4. Jim DeBord	538 yards
5. Ron Baines	518 yards
6. Glen Welch	514 yards
7. Tom Bodwell	456 yards
8. Terry Hurley	431 yards
9. Al Luis	371 yards
10. Steve Caputo	362 yards

PASSING

Yr Yds

1. Tom Kingsford	1950	1363
2. Ray Brum	1969	969
3. Gary Berding	1970	828
4. Dick Heath	1953	809
5. Norm Kampschorr	1955	803
6. James Kelly	1957	797
7. Phil Griffin	1958	629
8. John Schulz	1959	591

PASSING

1. Tom Kingsford	2296 yards
2. Ray Brum	2068 yards
3. Dick Heath	1231 yards
4. Gary Berding	1177 yards
5. Ed Steiner	1073 yards
6. John Schulz	993 yards
7. Norm Kampschorr	803 yards
8. James Kelly	797 yards

The Big Sky Conference

The Big Sky Conference was formed in February, 1963, when the presidents and athletic directors of six Rocky Mountain universities met in Spokane. The original conference members were Gonzaga, Idaho, Idaho State, Montana, Montana State and Weber. Gonzaga entered the conference as a non-football playing school.

The conference derived its name from a pair of Montanans and a Washington sports editor. A. B. Guthrie, Great Falls, Montana, wrote a novel entitled "The Big Sky" and Jack Hallowell, former Montana State Advertising director, promoted the Big Sky theme as a nickname for the state. Harry Missildine, Spokesman-Review sports editor, picked up the name and in a sports column promoted the name Big Sky as the name of the conference. On February 25, 1963, the conference adopted the name—Big Sky Athletic Conference.

In 1970 the conference expanded to include Northern Arizona University, Flagstaff, Ariz., and Boise State College, Boise, Idaho. Both entered as football playing schools.

Jack Friel became the first commissioner in 1963, and the offices were established in Pullman, Wash., Friel's home. Following Friel's retirement last July, the offices were moved to Boise, Idaho, and John Roning was named commissioner.

The Commissioner

John Roning was named Big Sky Commissioner to replace Jack Friel, who retired July 1, 1971. Friel was commissioner since the Big Sky Conference's inception in 1963. Not only was there a change at the helm, but the league offices were moved to Boise and a conference sports information director, Dan Peters, appointed. Roning first entered the collegiate athletic picture at the University of Minnesota as an end for Bernie Bierman's Golden Gophers from 1932-34. Bierman also coached at Montana from 1919-21. Roning coached in Minnesota high school leagues before a three-year stint at Gustavus Adolphus College, St. Peter, Minn., before returning to Minnesota for graduate work. Following naval service during World War II, Roning joined the Utah State University football staff and served four years as head football coach and athletic director for the Aggies. He was twice named Skyline Conference "Coach of the Year." Roning then became head football coach at the University of Denver and was the Pioneer headman for six years. He then moved to the University of South Dakota in 1960.

The Past Champs, Runnersup

1963	Idaho State (3-1)	MSU (2-1)
1964	Montana State (3-0)	ISU (2-1)
1965	Weber State, Idaho (3-1)	UM (2-2)
1966	Montana State (4-0)	UI (3-1)
1967	Montana State (4-0)	UM, WSC, UI (2-2)
1968	Weber State, Idaho, Montana State (3-1)	
1969	MONTANA (4-0)	WSC (3-1)
1970	MONTANA (6-0)	ISU (4-2)
1971	Idaho (4-1)	BSC (4-2)
1972	Montana State (5-1)	ISU (4-1)

All-Conference

PACIFIC COAST, NORTHWEST, SKYLINE

Chris Bentz	1914	Hal Maus	1952
Alfred Robertson	1914-15	Jim Murray	1952
Earl "Click" Clark	1915	Dick Imer	1953-54
Bill "Wild Bill" Kelly	1924-25	Joe DeLucas	1954
Reid Harmon	1929	Doug Dasinger	1955
Bob Stansberry	1933	Stan Renning	1957-58
Milt Popovich	1937	John Lands	1958-59
Aldo Forte	1937	Bob O'Billovich	1960
Ray Bauer	1950	Pat Dodson	1960
Bob Byrne	1951	Terry Dillon	1961

BIG SKY

Jerry Luchau	1963	Bill Gutman	1969
Chris Pomajevich	1963	Les Kent	1969
Pete Gotay	1963	Jim Nordstrom	1969
Paul Connelly	1964	Roy Robinson	1969
Wayne Harrington	1964	John Stedham	1969
Terry Bergen	1965	Larry Stranahan	1969
Willie Jones	1965	Arnie Blancas	1969-70
Warren Hill	1966	Larry Miller	1969-70
Bob Graham	1967	Karl Stein	1969-70
Lon Howard	1967	Steve Okoniewski	1970-71
Larry Huggins	1967	Steve Caputo	1971
Bryan Magnuson	1967	Ray Stachnick	1971
Mick O'Neill	1967	Kit Blue	1972
Bob Beers	1967-68	Barry Darrow	1972
Herb White	1967-68	Mick Dennehy	1972
Tuufuli Uperesa	1968-69	Leo LaRoche	1972
Tim Gallagher	1969	Ron Rosenberg	1972

The Grizzly Cup

Initiated in 1921, the Grizzly Cup is the University of Montana's oldest athletic award. Dr. W. E. Schreiber, a long time head of the UM physical education department, began the award which is usually given to a senior. It is awarded to the athlete that best represents the University on and off the playing field.

The latest recipient, Earl Tye, is a good student and a two-year starter for the Grizzly basketball team. Tye graduated in spring with a B.S. in physical education and a 3.06 GPA. The 6-7 strongman was UM's outstanding defensive player the past two years. It was his responsibility to guard the opposition's top scorer or rebounder.

Larry Higbee	1921	Jack O'Laughlin	1950
Gil Porter	1922	Ray Bauer	1951
Gil Porter	1923	Robert Byrne	1952
Angus Meagher	1924	Jack Luckman	1953
Russ Sweet	1925	Ed Anderson	1954
Ted Illman	1926	Murdo Campbell	1955
Clarence Coyle	1927	Dale Shupe	1956
Eddie Chinske	1928	Don Williamson	1957
Tom Davis	1929	Naseby Rhinehart Jr.	1958
Ray Lewis	1930	Mike Granbois	1959
Glenn Lockwood	1931	Rudy Ruana	1960
Lowell Dailey	1932	Bob O'Billovich	1961
Dale Hinman	1933	Bob O'Billovich	1962
Al Dahlberg	1934	Paul D. Miller	1963
Naseby Rhinehart Sr.	1935	Tim Aldrich	1964
Henry Blastic	1936	William M. Rice	1965
Bill Lazetich	1938	Gary B. Peck	1966
Bob Thornally	1940	Greg Hanson	1967
Tom O'Donnell	1941	Willie Jones	1968
Bill Jones	1942	Mick Harrington	1969
Henry Dahmer	1943	Roy Robinson	1970
Charles Moses	1948	Lonzo Lewis	1971
John Holding	1949	Steve Okoniewski	1972
Earl Tye	1973		

1973 Football Schedule

Date	Opponent	Site
Sept. 8	†Simon Fraser	Great Falls, Mont.
Sept. 15	North Dakota	Grand Forks, N.D.
Sept. 22	†Rice	Houston, Tex.
Sept. 29	*Northern Arizona	Flagstaff, Ariz.
Oct. 6	South Dakota	MISSOULA
Oct. 13	*Idaho State	MISSOULA
Oct. 20	*Montana State	Bozeman, Mont.
Oct. 27	†*Boise State	Boise, Idaho
Nov. 3	*Idaho	MISSOULA
Nov. 10	*Weber State	Ogden, Utah

*Big Sky Conference game

†Night game

Home games begin at 1:30 Mountain time

1972 Results 3-8

UM	Opponent	Opp	Site
0	South Dakota	35	Vermillion, S.D.
14	North Dakota	42	Billings, Mont.
40	Northern Arizona	17	Missoula
6	Pacific	24	Stockton, Calif.
12	Weber State	7	Missoula
7	Idaho State	14	Pocatello, Idaho
3	Hawaii	30	Honolulu, Hawaii
42	Boise State	28	Missoula
3	Montana State	21	Missoula
17	Idaho	31	Moscow, Idaho
7	Tulsa	10	Tulsa, Okla.