

University of Montana

ScholarWorks at University of Montana

GLI Weekly

Franke Global Leadership Initiative

3-14-2023

GLI Weekly, March 14, 2023

Franke Global Leadership Initiative

Follow this and additional works at: https://scholarworks.umt.edu/gli_studentnewsletters

Let us know how access to this document benefits you.

Recommended Citation

Franke Global Leadership Initiative, "GLI Weekly, March 14, 2023" (2023). *GLI Weekly*. 41.
https://scholarworks.umt.edu/gli_studentnewsletters/41

This Newsletter is brought to you for free and open access by the Franke Global Leadership Initiative at ScholarWorks at University of Montana. It has been accepted for inclusion in GLI Weekly by an authorized administrator of ScholarWorks at University of Montana. For more information, please contact scholarworks@mso.umt.edu.

GLI WEEKLY



Welcome to the GLI Weekly

Your update on opportunities, events, scholarships, seminars and more.

Summer SCHOLARSHIPS

UP TO \$2,000 EACH

Isabel Kamps Murray

For future Rhodes Scholarship applicants - freshmen and sophomores from Humanities & Sciences may apply.

Summer Enhancement

For students of any major ~ open to freshmen, sophomores, and juniors. Students of underrepresented groups strongly encouraged to apply.

APPLY BY MARCH 20TH

The Office of External Scholarships & Fellowships is offering two summer scholarships, the [Isabel Kamps Murray](#) and [Summer Enhancement](#) scholarships, to support undergraduate experiential learning opportunities, including field courses, internships, community projects, research, etc. The goal of the award is to help students boost their resume and enhance their competitiveness for future awards like Boren, Fulbright, Rhodes, and Udall scholarships.

[More Info](#)



FROM GLOBAL TO LOCAL: ADDRESSING REFUGEE AND MIGRATION CRISES

international development studies

UM
MIGRATION STUDIES



IDS CAREER DEVELOPMENT WEBINAR: MARCH 15 WED 5:10-6:10 PM

SPEAKER: DR. SUSAN MARTIN



Former Executive Director, U.S. Commission on Immigration Reform mandated by statute to advise the President and Congress on U.S. immigration and refugee policy.

Professor Emerita of International Migration, School of Foreign Service & Founder/Director, Institute for the Study of International Migration and Certificate Program on Refugees and Humanitarian Emergencies, Georgetown University.

Mentor for UM's International Development Studies and Migration Studies programs.

The situation of asylum-seekers and others along the U.S.-Mexico border.



The use of humanitarian parole for admissions.

Causes and consequences of large-scale displacement of people around the globe, with particular attention to four issues of deep concern to the U.S.



Ways that UM students can help refugees and asylum-seekers locally and beyond.



The resettlement of refugees into the U.S.



U.S. leadership in addressing displacement worldwide.

[REGISTER FOR ZOOM LINK](#)

RSVP via the link below.

More Info





UM HUMANITIES INSTITUTE

PLAN 75

SPECIAL FREE SCREENING
MARCH 14 | 7:30 PM | ROXY THEATRE

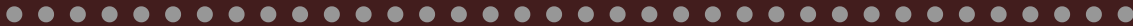
CONVERSATION HOSTED
BY DR. BRIAN DOWDLE
(JAPANESE)

PRESENTATION: 7:30 PM
FILM: 7:45 PM
+ POST FILM DISCUSSION

PART OF THE REIMAGINING DEATH SERIES, FUNDED BY A GRANT
FROM THE NATIONAL ENDOWMENT FOR THE HUMANITIES

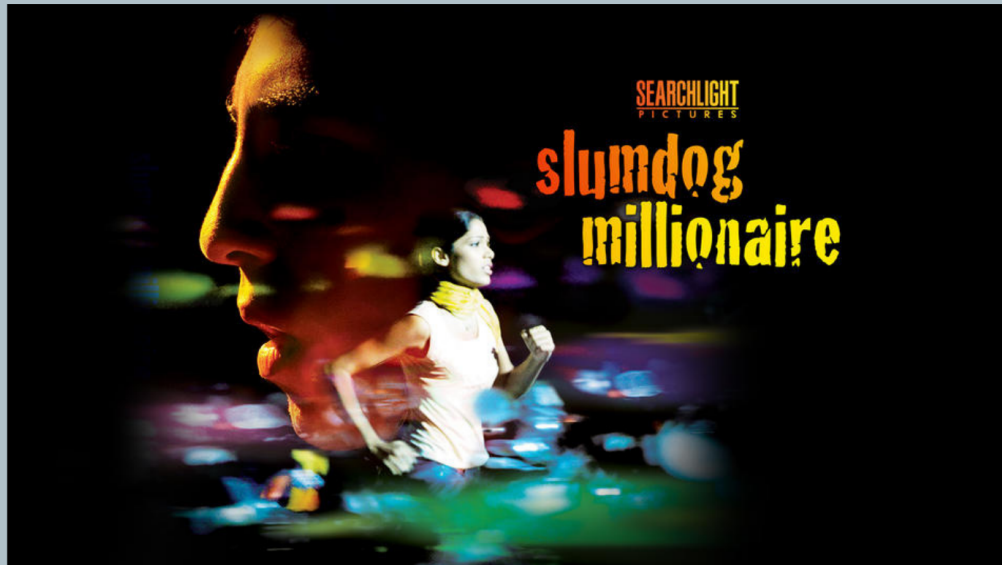
Join the UM Humanities Institute for a free film screening of *Plan 75* on Tuesday, March 14 at 7:30 p.m. at the Roxy Theater. There will be a brief presentation of the film, the film screening, and then a discussion after led by Dr. Brian Dowdle of UM's World Languages and Cultures Department (Japanese).

[More Info](#)



FREE MOVIE!!!

UC Theater
March 16 @ 6:15 p.m.

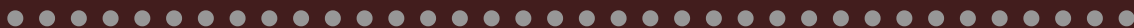


Snacks included! Join us
for discussion afterwards



FREE MOVIE!!!

Join the International Development Studies Club for their Slumdog Millionaire watch party this Thursday.



MANSFIELD DIALOGUES

NORTH KOREA
THREATS FROM A FAILED STATE



MAUREEN AND MIKE
MANSFIELD CENTER

With its egregious weapons proliferation and missile tests, North Korea is one of the biggest threats to international peace and security in the world today. And its longtime close relationship with neighbor China may further complicate efforts to moderate its behavior. Join the Mansfield Center as political scientist Bruce E. Bechtol, Jr., and Mansfield Fellow Robert E. McCoy discuss the North Korean security threat.

[More Info](#)

[Connect with GLI](#)

[View this email in your browser](#)



Want to change how you receive these emails?
You can [update your preferences](#) or [unsubscribe from this list](#).

Copyright © 2023 Franke Global Leadership Initiative, All rights reserved.

Want to change how you receive these emails?
You can [update your preferences](#) or [unsubscribe from this list](#).

