

Interscholastic Meet - Announcements

The Climax of the High School Year

THE FORTY-FOURTH INTERSCHOLASTIC MEET

FRIDAY AND SATURDAY
MAY 19-20, 1950

At MONTANA STATE UNIVERSITY
MISSOULA

Leon Connor, shown breaking the tape, scored four firsts for 20 points in the 1949 Interscholastic to win the Class B title single-handed for Victor high school. He was high individual scorer in the meet.



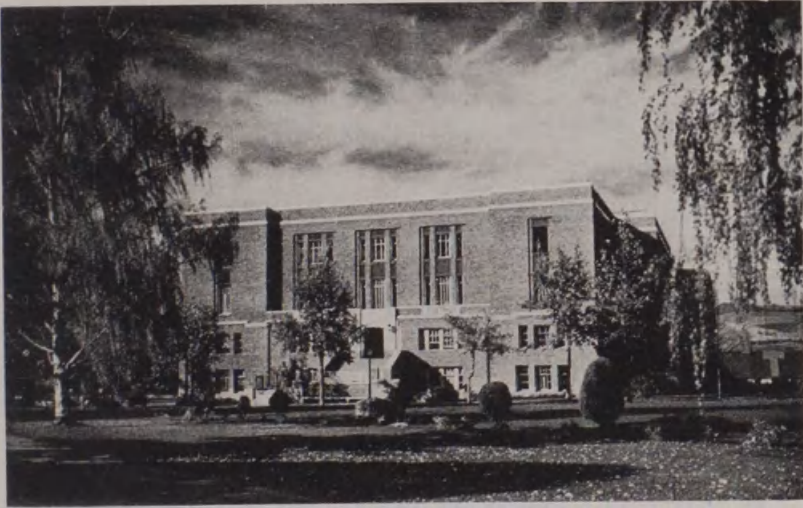
The Interscholastic Committee

J. W. HOWARD, General Chairman

EARL C. LORY, Vice Chairman

R. H. Jesse and J Earll Miller	Consultants
C. F. Hertler and Harry F. Adams	Co-Managers of Athletics
Ted Delaney, Junior Chamber of Commerce	Tickets Sales
B. E. Thomas	Transportation
Paul Bischoff	Entertainment of Men
Miss Maurine Clow	Entertainment of Women
R. A. Coleman	Declamation
Ralph Y. McGinnis	Debate and Original Oratory
Andy Cogswell	Publicity and Program
LeRoy Hinze	Little Theatre
Robert Struckman	Editorial Association
Vince V. Wilson	Tennis and Golf
Herbert Wunderlich	Counselor
R. A. Diettert and John Suchy	Gatekeepers
T. G. Swearingen	Head Scorer and Physical Equipment
Margaret Jesse and Dave Dean	Student Members

Interscholastic Headquarters



Student Union Building

General Information

Two major changes have been made this year in the program of the Montana Interscholastic: First, Friday and Saturday have been set as meet days rather than Thursday and Friday, as in the past; Second, the dates of the meet have been set in the third week of May instead of the second week, as in previous years.

The first change was made in order to reduce the number of school days lost by high school students participating in the many events of the Montana Interscholastic. The second was made to give contestants more time for training in their respective events. The Interscholastic Committee hopes that these changes will prove advantageous to both the contestants and the high schools they represent.

As a result of the changes, the program of the meet becomes more compact. Contestants and participants in any phase of the meet—athletics, debate, declamation, dramatics, extemporaneous speaking, journalism and original oratory — will find their program on the campus considerably intensified.

It is more than ever necessary, therefore, for all those responsible for entering participants in the meet to read carefully the instructions in this bulletin. Many changes have been made.

THURSDAY EVENING, MAY 18, 8:15 p.m.

All contestants who arrive in Missoula Thursday night will be admitted free to Rossini's opera, "The Barber of Seville," which will be produced in the Student Union Theatre cooperatively by the School of Music and the drama department of Montana State University.

Program of the Meet

FRIDAY, MAY 19

- 8:00 a.m., **Boys' Golf.** All contestants meet in front of Student Union building for transportation to Missoula Country Club course.
- 8:00 a.m., **Boys' Tennis.** All participants report to Men's Gymnasium.
- 8:00 a.m., **Extemporaneous Speaking.** Drawings for topics in Library 102.
- 8:00 a.m., **Original Oratory, Round I** (preliminary meeting in Library 102).
- 8:30 a.m., **Boys' Tennis.** (singles and doubles) University courts.
- 8:30 a.m., **Girls' Tennis.** All participants report to Women's Gymnasium.
- 8:30 a.m., **Declamation.** Meeting of all contestants, Copper Room, Student Union building. Preliminary and semi-final contest will follow this meeting.
- 9:00 a.m., Meeting of athletic representatives of all schools at Men's Gym.
- 9:00 a.m., to 7:00 p.m., **Girls' Tennis** (singles and doubles) University courts.
- 9:00 a.m., **Extemporaneous Speaking, Round I.**
- 9:00 a.m., **Interscholastic Editorial Association.** Journalism building.
- 10:00 a.m., **Debate, Round I** (preliminary meeting in Library 102).
- 10:30 a.m., **Girls' Golf,** tournament at Missoula Country Club course.
- 11:00 a.m., **Original Oratory, Round I** (preliminary meeting in Library 102).
- 1:00 p.m., **Debate, Round II.**
- 1:30 p.m., **Track and Field Meet,** (parade of athletes) Dornblaser field (see program of events, page 10).
- 2:00 p.m., **Extemporaneous Speaking,** Drawing for topics, Library 102.

Program of the Meet

- 2:30 p.m., **Original Oratory**, Round III (semi-finals).
- 3:00 p.m., **Extemporaneous Speaking**, Round II.
- 4:00 p.m., **Debate**, Round III.
- 6:00 p.m., **Annual Banquet** of Montana Speech League.
- 7:15 p.m., **Singing on the Steps**, University Hall.
- 8:00 p.m., **Declamation and Original Oratory**, Finals, Student Union auditorium.

SATURDAY, MAY 20

- 8:00 a.m., **Boys' Golf Tournament**, Missoula Country Club course.
- 8:00 a.m., **Boys' Tennis**, all participants report to Men's Gymnasium.
- 8:00 a.m., **Debate**, Round IV.
- 8:30 a.m., to 7:00 p.m., **Boys' Tennis** (singles and doubles) University courts. If matches are not completed Friday and Saturday, they will be continued on Sunday.
- 8:30 a.m., **Girls' Tennis**, all contestants report to Women's Gymnasium.
- 9:00 a.m. to 12 noon, **Travel Refunds**, Principals and coaches confer with Professor Thomas, Student Union building.
- 9:00 a.m. to 7:00 p.m., **Girls' Tennis**, (singles and doubles) University courts. If tennis matches are not completed on Friday and Saturday they will be continued Sunday.
- 9:00 a.m., **Extemporaneous Speaking**, Drawing for topics, Library 102.
- 9:00 a.m., **Little Theatre Festival**, Simpkins Little Theatre and Student Union Theatre.
- 10:00 a.m., **Extemporaneous Speaking**, Round III.
- 10:30 a.m., **Debate**, Round V (quarter finals).
- 12:00 noon, **Luncheon** meeting of teachers of English, Drama and Speech.
- 1:30 p.m., **Debate**, Semi-finals.
- 1:30 p.m., **Track and Field Meet**, finals.
- 1:30 p.m., **Little Theatre Festival**, Simpkins Little Theatre and Student Union Theatre.
- 3:00 p.m., **Extemporaneous Speaking**, Drawing for topics, Library 102.
- 4:00 p.m., **Extemporaneous Speech**, Finals.
- 4:30 p.m., **Debate**, Finals, Student Union auditorium.
- 8:15 p.m., **Little Theatre Festival** and awarding of prizes, Student Union Theatre.

Entry Blanks

An official entry blank will be sent out to all schools about April 22. This should be filled out at once and returned to Dr. J. W. Howard, chairman, Interscholastic Committee, Montana State University, Missoula, Montana.

Names of all contestants in track, golf, tennis, journalism, debate, original oratory, extemporaneous speaking and declamation must be submitted on the official entry blanks, and be in the hands of the committee by May 8. Later entries cannot be accepted. To insure prompt delivery, the entries should be sent by registered mail.

It is extremely important that schools indicate at the proper place on the blanks, when and how their contestants will arrive. Members of the University's two sophomore service organizations, Bear Paw and Spur, will meet all incoming trains. All teams and participants should report immediately upon arrival to the Interscholastic Headquarters in the Student Union Building on the campus. Here quarters will be assigned and contestant badges issued.

All correspondence relative to the meet in general, should be addressed to Dr. J. W. Howard, chairman, Interscholastic Committee. Letters or telegrams requesting specific information may be addressed to committee members having charge of specific events. For a list of these names, see the inside front cover.

Expenses

By pro-rating the net earnings of the Meet among the various schools entered, the Interscholastic committee has in the past been able to refund the transportation costs of two contestants from each school entered. The committee cannot guarantee these expenses, but since the institution of the pro-rating plan, refunds have been 100 per cent.

Transportation refunds are based upon round trip fares on the shortest **bus route** to Missoula for two contestants from each fully accredited high school entered in track, declamation, debate or Little Theatre. Round trip railroad fares will be paid on **presentation of receipts**. Costs of meals, sleepers, or hotel accommodations used en route, are not included in the refunds.

Lodging refunds will be based upon a 75-cent per day allowance for all women chaperons and not more than two contestants. Lodging refunds cannot be obtained unless the housing provided for contestants is occupied.

The committee will not pay for contestants' and chaperons' meals, nor for the transportation of chaperons and coaches.

In order to secure refunds, principals and coaches must consult Professor B. E. Thomas at the Student Union Office, Friday from 9 a. m. to 12. Failure to do so may delay refunds for several weeks.

Housing and Chaperons

The Interscholastic committee will arrange for, but not pay for, housing of all contestants and chaperons. See paragraph on "Expenses," page 6 for information on housing refunds. Girl contestants and their chaperons will be housed in private homes, or, if possible, in the University residence halls. Boy contestants will be housed in hotels, motels, etc. Principals, chaperons and coaches must assume responsibility for the deportment of their charges. Should hotels prove damages caused by contestants, or report failure to pay obligations incurred, the committee will withhold payment of travel expenses or disqualify the offending school from participation in future Interscholastic meets.

If two or more schools plan to place their contestants under the supervision of the same coach or chaperon, they must notify the committee not later than the last day set for receipt of entry blanks. Otherwise it may be impossible to secure lodging for contestants in the same place selected for coaches or chaperons.

Because the committee feels that no school should send contestants to Interscholastic without competent chaperons, it reserves the right to refuse lodging to unaccompanied contestants. The committee insists that coaches and chaperons stay with their charges, except during actual competition.

Contestant badges and lodging assignment will be given to all coaches and chaperons. Application for these should be made at the Interscholastic headquarters in the Student Union building. The badges will admit their holders to all Interscholastic events.

General Rules

1. A contestant may take part in as many different divisions of Interscholastic as he wishes. However, he should study the program carefully to be sure he will not encounter conflicts in time. The committee cannot adjust the Interscholastic program to fit the time of any one contestant. If, due to a conflict, he is not present when an event is called, he will give up his right to participate in that event.

2. All contestants will be expected to participate in the events for which they have been trained and in which they have been entered. No expenses will be paid for a contestant who does not take part in at least one event.

3. For specific rules governing track, tennis, golf, debate, original oratory, declamation, and the editorial association look under those headings elsewhere in this pamphlet.

Track Events

POINTS IN THE 1949 TRACKMEET

CLASS A

Missoula	70	Havre	6
Butte	36 1/2	Park Co.	5
Helena	31 3/4	Gallatin Co.	2 3/4
Great Falls	15	Dawson	1
Custer Co.	10	Glasgow	3/4
Billings	9 3/4	Sidney	1/2
Flathead Co.	6		

CLASS B

Victor	20	Powell Co.	3 1/2
Hardin	16 13/14	Belt Valley	3
Hamilton	15 2/7	Hysham	3
Colstrip	14	Terry	3
Corvallis	11 3/7	Whitehall	3
Darby	10	Thompson Falls	2
Anaconda Central	10	Winnett	2
Columbia Falls	9	Plains	2
Forsyth	9	Park City	1
Libby	8	Willow Creek	1
Columbus	7	Rosary (Billings)	1
Laurel	6 3/7	Whitefish	1
Polson	6	Beaverhead Co.	1
Carbon Co.	5	Browning	3/7
Outbank	5	Shelby	3/7
St. Ignatius	4	Chinook	3/7
Ronan	4		

Montana Interscholastic Track Records

Meet records are the best marks established in any event in the meet regardless of whether established by Class A or Class B school contestants. To stand, records must be established at the Interscholastic meet.

Event	Record	Holder
100-yard dash ... 9.8 sec.		R. O'Malley, Butte, 1933
220-yard dash ... 21.6 sec.		R. O'Malley, Butte, 1933
440-yard dash ... 50.5 sec.		E. Burke, Laurel, 1938
880-yard run ... 1:58.8		B. Rife, Custer County, 1949
Mile run ... 4:27.6		J. Kittel, Missoula, 1945
High hurdles ... 14.8 sec.		Don McAuliffe, Butte, 1948
Low hurdles ... 22.8 sec.		D. Yovetich, Butte, 1941
		Equalled by G. Welsh, Butte, 1945
Pole vault ... 12 ft. 10 in.		W. Custer, Missoula, 1930
Javelin throw ... 197 ft. 5 in.		R. Gustafson, Corvallis, 1938
Shot put ... 52 ft. 8 1/2 in.		L. Perry, Great Falls, 1948
Discus throw ... 151 ft. 1 1/4 in.		L. Perry, Great Falls, 1947
High jump ... 6 ft. 3 in.		S. Muchmore, Drummond, 1940
Broad jump ... 22 ft. 3 3/4 in.		D. Hamilton, White Sulphur Spgs., 1931

Rules Governing Track

(See General Rules, page 7)

1. The rules of the National Collegiate Athletic Association will govern all contests in athletics, including disqualification for second false start in all races.

2. All students certified to take part in this meet must be eligible in accordance with the rules of eligibility adopted by the Montana High School Association.

3. The meet will be run off in A and B divisions. Any B school may compete in the A division, but it must make its choice on the entry blank submitted to the committee on May 8. If a B school chooses the A division, it will be declared in every way an A school.

4. The committee believes that athletes have a better chance for success if entered in only a few events. While there is no limit to the number of men who may be listed on the entry blank, not more than 10 from any school will be allowed to participate in track and field events and no more than two contestants from the same school will be allowed in the same athletic event. No more than three contestants may be entered in any event except the relays.

5. Representatives of competing schools will meet in the University gymnasium at 9:00 a.m. Friday, May 19, to make the following time-saving arrangements:

a. Scratch official entry lists so that only the actual competitors remain in any event except the relays.

b. Assign and draw for heats in the running events and flights in the field events in which preliminaries are necessary.

c. Draw for lanes for contestants in the running event trials and for the order of competition in field event trials.

The coach (or other official representative) of each participating school must be present at this meeting. Entries of schools not represented will be scratched from all events requiring preliminaries. Harry F. Adams or Charles Hertler, the track meet managers, will represent any school whose coach cannot be present if they are informed in writing, before the meeting, of the coach's actual entries in each event. Responsibility for supplying written instructions to the meet managers will rest upon the school and coach concerned.

6. Coaches, trainers, attendants and entries who have been scratched will not be allowed on the field during the meet. Contestants competing in Friday's events must be in uniform and must be wearing their contestant's number in order to gain admittance to the field. Only those contestants who are actually

competing in the finals on Saturday will be allowed on the field. Relay runners who have not qualified in the other events of Saturday's program will be admitted only when it is time for them to warm up for that event. A section of the stadium will be reserved for contestants.

7. In determining scores for the awarding of prizes in track and field events, the first place shall count 6 points; second place, 4 points; third place, 3 points; fourth place, 2 points; fifth place, 1 point. One fourth of the points scored by each team placing in the relay will be credited to each member of that relay team, in determining individual high point winners. Should the referee declare a tie for any place in any event the point or points scored shall be divided and a corresponding medal or ribbon given to each tying contestant.

8. All contestants must wear jerseys so that numbers may be pinned on their backs.

Program of Track Events

Class A races will precede Class B except as specifically indicated on program.

FRIDAY, MAY 19, 1:30 P.M.

Parade of Athletes.

Trials of 100-yard dash. (First two qualify for semi-finals)

Trials of 120-yard high hurdles. (First three qualify for semi-finals).

Semi-finals, 100-yard dash. (First two qualify for finals).

Semi-finals, 120-yard high hurdles. (First three qualify for finals).

Trials, 440-yard run. (First two qualify for finals).

Final, mile run, Class B.

Trials, 220-yard dash. (First two qualify for semi-finals).

Final, 880-yard run, Class A.

Trials, 200-yard low hurdles. (First two qualify for semi-finals).

Semi-finals, 220-yard dash. (First two qualify for finals).

Finals in the Class B pole vault and in the Class A high jump will be held concurrently with the running events.

Trials in the following field events will be held with participants competing in flights of not to exceed 12 men at a time: Class B discus throw (on practice field north of Dornblaser field), Class A shot put, Class B javelin throw, and Class A broad jump (all on Dornblaser field); followed by Class B shot put, Class A javelin throw, Class B broad jump (all on Dornblaser field), and Class A discus throw (on practice field north of Dornblaser field).

SATURDAY, MAY 20, 1:30 P.M.

Finals, 100-yard dash.

Finals, 120-yard high hurdles.

Final, 880-yard run, Class B.

Semi-finals, 200-yard low hurdles. (First two qualify for finals).

Finals, 440-yard run.

Final, mile run, Class A.

Finals, 220-yard dash.

Finals, 200-yard low hurdles.

Finals, 880-yard relays. (Both Class A and Class B relays will be run in lanes with staggered starts, and on a comparative time basis if there are more than five teams in either class.)

Finals of the Class A pole vault and Class B high jump will be held concurrently with the running events.

Finals of the weight events and broad jump will be held as follows: Class A shot put, Class B discus throw, Class A broad jump; followed by Class A discus throw, Class B shot put, Class B broad jump; followed by Class A javelin throw and Class B javelin throw.

The Committee reserves the right to qualify more contestants than the above calls for, and to eliminate any semi-final found to be unnecessary.

All 440, 880 and mile races will be started at the head of the straightaway (thus eliminating the first turn.)

Golf and Tennis Tournaments

Winner in Girls' Golf Tournament for 1949: Gerry Pochervina, Butte Public high school.

Winner in Boys' Golf Tournament for 1949: Don Welch, Whitefish high school.

Winners in Girls' Tennis Tournament for 1949: Singles, Joan Curlee, Butte Public high school. Doubles, Shirley DeForth and Audree Siverts, Dawson County high school.

Winners in Boys' Tennis Tournament for 1949: Singles, Dick Bergland, Dawson County high school. Doubles, Dick Bergland and D. Jimison, Dawson County high school.

Rules Governing Tennis and Golf

(See General Rules, Page 7)

Coaches may submit as many names as they wish on the entry blank, but no more than two from any one school may compete in the girls' golf tournament, the boys' golf tournament, the girls' tennis singles, and the boys' tennis singles. In tennis doubles, only one team from each school may be entered.

Contestants entered in the tennis singles may also enter in the doubles.

Tournaments are arranged for both boys and girls. Entries must be sent on the regular entry blanks. (See "Entry Blanks," Page 6.) The committee will pay no expenses of the entrants in these tournaments.

Golf. Boys' tournament. A 36-hole medal-play tournament, 18 holes on Friday morning and 18 holes on Saturday morning, starting at 8 a. m. on the Missoula Country Club golf course. See program of meet pages 4 and 5.

Girls' Tournament. An 18-hole medal-play tournament, 9 holes on Friday morning and 9 holes on Saturday morning, starting at 10:30 a. m. at Missoula Country Club golf course.

Tennis. Boys' tournament. Singles and doubles Friday at 8 a. m. to 7 p. m. and Saturday at 8 a. m. to 7 p. m. Men's gymnasium and University courts.

Girls' tournaments. Singles and doubles Friday 8:30 a. m. to 7 p. m. and Saturday 8:30 a. m. to 7 p. m. Women's gymnasium and University courts.

Interscholastic Editorial Association

All-State Honors for 1949:

Flathead Arrow. Flathead County high school, Kalispell; **Nugget.** Helena high school; **Konah.** Missoula County high school, Missoula; **Dawson Herald.** Dawson County high school, Glendive; **Pow-Wow.** Ronan high school; **Beaver.** Beaverhead County high school, Dillon; **Central Breeze.** Whitefish high school; **Cone-let.** Sacred Heart Academy, Missoula; **Llano.** Plains high school; **Hamiltonian.** Hamilton high school; **Canon Report.** Fort Benton high school; **Panther Parade.** Round-up high school; **Headwaters.** Three Forks high school; **Lambertonian.** Lambert high school; **Park City Bluffs.** Park City high school; **Richonian.** Richey high school; and **Custer Beacon.** Custer high school.

The Montana Interscholastic Editorial Association will meet in the Journalism building at 9:00 a. m. Friday. Each member school is entitled to two voting delegates, each of whom will receive a contestant badge. Delegates, however, must be listed on the schools entry blank. (See page 6).

Annual newspaper ratings will be announced at the close of the Friday morning session. Awards in this contest will be made upon the basis of the following classification:

Class A—Printed publications from schools with enrollments of 500 or more.

Class B—Printed publications from schools with enrollments between 250 and 500.

Class C—Printed publications in schools with enrollments of 250 or less.

Class D—Duplicated papers from schools with enrollments of 75 or more.

Class E—Duplicated papers from schools with enrollments less than 75.

Class F—Papers which are published as inserts or departments in community newspapers.

Papers in each class will be rated All-State, Superior, Excellent, Good, Fair, or no rating.

For further information write to Prof. Robert Struckman, State University, Missoula, Montana.

Speech Events

Sweepstakes winner, 1949: Flathead Co. high school.

A trophy is awarded by the Montana High School Speech League to the school scoring the greatest number of points in all events.

Declamation

Winners for 1949: Serious declamation, James Finlen, Boys' Central high school, Butte; Humorous declamation, Shirley Miller, Corvallis high school; Oratorical declamation, Colleen Tierney, Girls' Central high school, Butte.

Rules governing Declamatory Contest.

(See General Rules, Page 7)

1. While both boys and girls may participate, there will be no separate boys' and girls' contests. Instead, three different types of declamation may be presented: serious or dramatic declamation, humorous declamation, and oratorical declamation.

2. If a coach wishes to indicate the name of an alternate for his declaimers, he may do so on the regular entry blanks sent by the Interscholastic committee to high school principals on or about April 22. Take care to specify that the student is an alternate and not a regular contestant. This is the only method by which an alternate will be admitted on the program.

3. Each school may enter a **maximum of three speakers**, distributing this number among the above categories in any way the principal or coach desires.

4. There will be preliminary, semi-final, and final contests.

5. A general assembly of contestants, coaches, and judges will be held in the Copper Room of the Student Union building, Friday, May 19 at 8:30 a. m., where instructions will be given and contestants sent to their different divisions. **All concerned should report promptly.** Semi-final contests will be

held in the following places immediately after the preliminaries are over: serious or dramatic declamation in the Student Union Copper room; humorous declamation in the Student Union Silver room; oratorical declamation in Library 119.

6. Only six speakers will participate in the final contest Friday evening, and to each of these a medal will be awarded.

7. Declaimers are urged to avoid hackneyed, or intensely dramatic or melo-dramatic selections.

8. No selection may take longer than **ten minutes** to deliver; contestants exceeding this limit will not be considered in choosing winners.

9. Judges shall base their judgment on the speaker's ability to communicate what he has to say. Such communication will depend on the speaker's understanding and appreciation of the writing, intellectual and emotional, and his impartation of it to his hearers.

10. No declamation (oratorical, serious or humorous) which has been given by the first place winner in the year immediately preceding shall be permitted to be used in the finals of the declamation contest. The winning declamations of 1949, which are consequently barred in the 1950 finals, are: Darrow's "Plea for Mercy," William Rose Benet's "America Means," Shakespeare's "Murder of King Duncan," Gilman's "Yellow Wallpaper," McMahon's "Exit the Big Bad Wolf," and O'Henry's "Ransome of the Red Chief."

11. For further information address Prof. R. A. Coleman, Montana State University, Missoula, Mont.

Debate

Winners for 1949: Team, St. Thomas High School, Great Falls; Best Individual Debater, Margaret McAllister, St. Thomas High School.

Question for 1950: "Resolved: That the President of the United States Should be Elected by the Direct Vote of the People."

All communications concerning debate should be addressed to Ralph Y. McGinnis, director, Montana High School Speech League, Montana State University, Missoula, Montana.

Provisions for Debate Tournament

1. All high schools, which are eligible to belong to the Montana High School Speech League, shall be eligible to participate in debate. Pairings of teams and determinations of sides shall be by lot.

2. The tournament will begin Friday, May 19, at 10 a. m. Coaches of all teams will meet in Room 102 of the Library for the pairings. Three rounds will be held Friday with all teams debating. The state championship debate will be in the Student Union auditorium at 4:30 p. m., Saturday, May 20.

3. All teams will debate four preliminary rounds. The eight highest ranking teams will enter the elimination rounds during which one defeat will eliminate a team from further competition.

4. Names of all debaters and coaches must be listed on the entry blank which will be sent to school principals on or about April 22. The names of all entries must be in the hands of the Interscholastic committee by May 8.

5. Subject to change by mutual agreement of participants and coaches, all debates shall be conducted in accordance with the cross-examination plan provided for in the league constitution.

Extemporaneous Speaking

Winner for 1949: Eunice Peckenpough, Flathead County High School.

All communications concerning extemporaneous speaking should be addressed to Ralph Y. McGinnis, Montana State University, Missoula, Mont.

Provisions for the Extemporaneous Speaking Contest

1. One hour before speaking, the contestant will draw by lot three specific speech topics based on the following general subjects:

- a. The 1950 United States Congress.
- b. The United Nations, 1949-50.
- c. Education in the U. S.

The specific speech topics will have been chosen from materials appearing in the January, February, March and April issues of **Time**, **Scholastic**, and **Readers Digest** magazines.

2. The contestant will then choose one of the three as the subject for his speech and return the other two.
3. The contestant will have one hour for the preparation of his speech. The University library will be open to his use.
4. At the scheduled time for beginning the contest, the contestants will draw numbers by lot to determine the speaking order.
5. Maximum time limit for speaking will be 8 minutes. Minimum time limit will be 5 minutes.
6. The contest will begin Friday, May 19, at 8 a. m. Drawings for topics will be in Room 102, of the Library. Contestants will take part in two preliminary rounds. The highest ranking 12 will speak in the semi-finals. The highest ranking six will speak in the finals.
7. Names of all extemporaneous speakers and coaches must be listed on the entry blanks which will be sent to school principals on or about April 22. The names of all entries must be in the hands of the Interscholastic committee by May 8.

Original Oratory

Winner for 1949: Tim Crail, Flathead County High School, Kalispell.

All communications concerning oratory should be addressed to Ralph Y. McGinnis, Montana State University, Missoula, Mont.

Provisions for Oratory Tournament

1. Orations must be written originally by the students delivering them. The maximum time limit is 10 minutes. Sectioning and speaking order will be determined by lot.

2. The tournament will begin Friday, May 19, at 8 p. m. Contestants and coaches will meet in Room 102 of the Library for instructions. Contestants will take part in two preliminary rounds; the winners, not exceeding six, from the preliminary rounds will speak in the semi-finals. Two finalists will be chosen to speak in the final program.

3. Names of all orators must be listed on the entry blank which will be sent to school principals on or about April 22. The names of all entries must be in the hands of the Inter-scholastic committee by May 8.

4. For further rules concerning oratory, see the by-laws for oratory of the Montana High School Speech League Constitution.

Little Theatre Festival

Winners for 1949 — In the Festival:

Best actor—Max McPike, Missoula County high school.

Best actress—Rita Nelson, Billings high school.

Best character actor—Hugh Morton, Billings high school.

Best character actress—Idella Ash, Hamilton high school.

Best bit actor—Tom Ellis, Ronan high school.

Best bit actress—Marjorie Lovberg, Missoula County high school.

In the tournament:

Best actor—Harvey Livix, Great Falls high school.

Best actress—Mary Maurer, Libby high school.

Best character actor—Conral Clifford, Great Falls high school.

Best character actress—Frances Beiry, Ronan high school.

Best bit actor—Karl Zobell, Ronan high school.

Best bit actress—Thelma Rolseth, Libby high school.

Most promising actor—Darwin Philips, Beaverhead County high school, Dillon.

Most promising actress—Donna Nooney, Missoula County high school.

Most promising character actor—James Laeback, Hobson high school.

Most promising character actress—Mary Nan Barr, Hobson high school.

Most promising bit actor—Leslie Smith, Fort Benton high school.

Most promising bit actress—Frances Rogers, Missoula County high school.

As a result of the survey of two years ago and discussion with high school directors on the campus last spring, the committee has decided to use this year the non-competitive festival form of participation in the Little Theatre.

One act plays or cuttings from longer plays, neither exceeding 35 minutes in playing time nor being less than 20 minutes and involving not more than one set of scenery, may be entered.

Adjudicators will comment on all Festival entrants. The evening program will consist of four plays selected by the adjudicators for imagination, excellence of acting, and quality of production. Since half the entrants will play in Simpkins Little Theatre and half play in the Student Union Theatre with an adjudicator in each theatre, medals will be awarded as follows:

For plays in Simpkins Little Theatre: Best actor, best actress, best character actor, best character actress, best bit actor, best bit actress.

For plays in Student Union Theatre: Best actor, best actress, best character actor, best character actress, best bit actor, best bit actress.

In addition, the literature section of the Missoula Woman's Club will give the following awards to entrants of schools appearing in the morning and afternoon, but not appearing in the evening program: medals for the most promising actor, most promising actress, most promising character actor, most promising character actress, most promising bit actor, most promising bit actress.

Prizes

Prizes in Athletics

1. The Missoula Mercantile presents two cups, one to be awarded to the winner in Class A and one to the winner in Class B. These cups are awarded each year to the winners of the track and field meet, to be held for one year. They will be awarded permanently in 1953 to the school which shall have won the greatest number of points in five meets.

2. The Kiwanis cup, given by the Kiwanis club of Missoula, is awarded each year to the team breaking or equaling the largest number of records in the track and field meet. The cup is to be held for one year but will be awarded permanently in 1953 to the team which shall have broken or equalled the largest number of records in five meets.

3. A Rotary cup, given by the Rotary club of Missoula, is awarded permanently to the winning team in each division.

4. Two University Relay plaques, given by the University, will be presented to the schools winning the relay races.

5. The University gives gold, silver and bronze medals, suitably engraved, and blue and red ribbons, for winners of first, second, third, fourth and fifth places in all track and field events for both A and B schools—a total of 140 prizes for the 14 athletic events.

6. The University will also give an individual prize to the contestant winning the greatest number of points in each division.

7. In the boys' golf tournament, gold, silver, and bronze medals will be awarded to the winners of first, second and third places, respectively. In the girls' golf tournament, a gold medal will be awarded to the winner. In both the boys' and girls' tennis tournaments, three gold medals will be awarded, one to the winner of the singles contest, one to each member of the winning team in the doubles contest, and three silver medals to the runner-up in the singles contest and to each member of the runner-up team in the doubles.

8. Gold and silver medals are awarded for places in the various divisions of declamation: in debate, original oratory, and extemporaneous speaking. Medals are also awarded in the several categories of judging in the Little Theatre Festival.