

HS-44, 1951
60P-2

INTERSCHOLASTIC MEET -
ANNOUNCEMENT

*The Climax
of the High School Year*

THE FORTY-FIFTH

INTERSCHOLASTIC

FRIDAY AND SATURDAY

MAY 18-19, 1951

At

Montana State University

Missoula, Montana

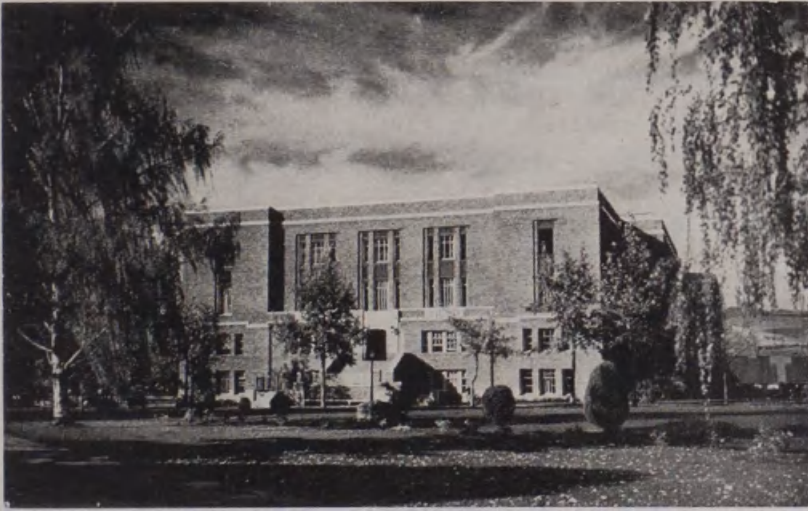
The Interscholastic Committee

J. W. HOWARD, General Chairman

EARL C. LORY, Vice Chairman

C. F. Hertler and Harry F. Adams	Co-Managers of Athletics
Ted Delaney, Junior Chamber of Commerce	Tickets Sales
B. E. Thomas	Transportation
Paul Bischoff	Entertainment of Men
Miss Maurine Clow	Entertainment of Women
R. A. Coleman	Declamation
Ralph Y. McGinnis	Debate and Original Oratory
Andy Cogswell	Publicity and Program
LeRoy Hinze	Little Theatre
Robert Struckman	Editorial Association
Vince V. Wilson	Tennis and Golf
Herbert Wunderlich	Counselor
R. A. Diettert and John Suchy	Gatekeepers
T. G. Swearingen	Head Scorer and Physical Equipment
Anne Marie Beatty and Bryce Breitenstein	Student Members

Interscholastic Headquarters



Student Union Building

General Information

Two major changes were made last year in the program of the Montana Interscholastic: First, Friday and Saturday were set as meet days rather than Thursday and Friday, as in the past; Second, the dates of the meet were set in the third week of May instead of the second week, as in previous years.

The first change was made in order to reduce the number of school days lost by high school students participating in the many events of the Montana Interscholastic. The second was made to give contestants more time for training in their respective events. The Interscholastic Committee hopes that these changes will prove advantageous to both the contestants and the high schools they represent.

As a result of the changes, the program of the meet becomes more compact. Contestants and participants in any phase of the meet—athletics, debate, declamation, dramatics, extemporaneous speaking, journalism and original oratory — will find their program on the campus considerably intensified.

It is more than ever necessary, therefore, for all those responsible for entering participants in the meet to read carefully the instructions in this bulletin. Many changes have been made.

Program of the Meet

FRIDAY, MAY 18

- 8:00 a.m. **Boys' Golf**, All contestants meet in front of Student Union building for transportation to Missoula Country Club course.
- 8:00 a.m., **Boys' Tennis**, All participants report to Men's gymnasium.
- 8:00 a.m., **Extemporaneous Speaking**, Drawings for topics in Library 102.
- 8:00 a.m., **Original Oratory**, Round I (preliminary meeting in Library 102).
- 8:00 a.m., **Declamation**, Meeting of all contestants, Bitterroot Room, Student Union building. Preliminary and semi-final contest will follow this meeting.
- 8:30 a.m., **Boys' Tennis**, (singles and doubles) University courts.
- 8:30 a.m., **Girls' Tennis**, All participants report to Women's gymnasium.
- 9:00 a.m., Meeting of athletic representatives of all schools at Men's Gym.
- 9:00 a.m., to 7:00 p.m., **Girls' Tennis** (singles and doubles) University courts.
- 9:00 a.m., **Extemporaneous Speaking**, Round I.
- 9:00 a.m., **Interscholastic Editorial Association**, Journalism building.
- 10:00 a.m., **Debate**, Round I (preliminary meeting in Library 102).
- 10:30 a.m., **Girls' Golf**, tournament at Missoula Country Club course.
- 11:00 a.m., **Original Oratory**, Round I (preliminary meeting in Library 102).
- 1:00 p.m., **Debate**, Round II.
- 1:30 p.m., **Track and Field Meet**, (parade of athletes) Dornblaser field (see program of events, page 10).
- 2:00 p.m., **Extemporaneous Speaking**, Drawing for topics, Library 102.
- 2:30 p.m., **Original Oratory**, Round III (semi-finals).
- 3:00 p.m., **Extemporaneous Speaking**, Round II.
- 4:00 p.m., **Debate**, Round III.
- 6:00 p.m., **Annual Banquet of Montana Speech League**.
- 7:15 p.m., **Singing on the Steps**, University Hall.
- 8:00 p.m., **Declamation and Original Oratory**, Finals, Student Union auditorium.

Program of the Meet

SATURDAY, MAY 19

- 8:00 a.m., **Boys' Golf Tournament**, Missoula Country Club course.
- 8:00 a.m., **Boys' Tennis**, all participants report to Men's Gymnasium.
- 8:00 a.m., **Debate**, Round IV.
- 8:30 a.m., to 7:00 p.m., **Boys' Tennis** (singles and doubles) University courts. If matches are not completed Friday and Saturday, they will be continued on Sunday.
- 8:30 a.m., **Girls' Tennis**, all contestants report to Women's Gymnasium.
- 9:00 a.m. to 12 noon, **Travel Refunds**, Principals and coaches confer with Professor Thomas, Student Union building.
- 9:00 a.m., to 7:00 p.m., **Girls' Tennis**, (singles and doubles) University courts. If tennis matches are not completed on Friday and Saturday they will be continued Sunday.
- 9:00 a.m., **Extemporaneous Speaking**, Drawing for topics, Library 102.
- 9:00 a.m., **Little Theatre Festival**, Simpkins Little Theatre and Student Union Theatre.
- 10:00 a.m., **Extemporaneous Speaking**, Round III.
- 10:30 a.m., **Debate**, Round V (quarter finals).
- 12:00 noon, **Luncheon** meeting of teachers of English, Drama and Speech.
- 1:30 p.m., **Debate**, Semi-finals.
- 1:30 p.m., **Track and Field Meet**, finals.
- 1:30 p.m., **Little Theatre Festival**, Simpkins Little Theatre and Student Union Theatre.
- 3:00 p.m., **Extemporaneous Speaking**, Drawing for topics, Library 102.
- 4:00 p.m., **Extemporaneous Speech**, finals.
- 4:30 p.m., **Debate**, finals, Student Union auditorium.
- 8:15 p.m., **Little Theatre Festival** and awarding of prizes, Student Union Theatre.

Entry Blanks

An official entry blank will be sent out to all schools about April 22. This should be filled out at once and returned to Dr. J. W. Howard, chairman, Interscholastic Committee, Montana State University, Missoula, Montana.

Names of all contestants in track, golf, tennis, journalism, debate, original oratory, extemporaneous speaking and declamation must be submitted on the official entry blanks, and be in the hands of the committee by May 7. Later entries cannot be accepted. To insure prompt delivery, the entries should be sent by registered mail.

It is extremely important that schools indicate at the proper place on the blanks, when and how their contestants will arrive. Members of the University's two sophomore service organizations, Bear Paw and Spur, will meet all incoming trains. All teams and participants should report immediately upon arrival to the Interscholastic Headquarters in the Student Union Building on the campus. Here quarters will be assigned and contestant badges issued.

All correspondence relative to the meet in general, should be addressed to Dr. J. W. Howard, chairman, Interscholastic Committee. Letters or telegrams requesting specific information may be addressed to committee members having charge of specific events. For a list of these names, see the inside front cover.

Expenses

By pro-rating the net earnings of the Meet among the various schools entered, the Interscholastic committee has in the past been able to refund the transportation costs of two contestants from each school entered. The committee cannot guarantee these expenses, but since the institution of the pro-rating plan, refunds have been 100 per cent.

Transportation refunds are based upon round-trip fares on the shortest **bus route** to Missoula for two contestants from each fully accredited high school entered in track, declamation, debate or Little Theatre. Round-trip bus fares will be paid on **presentation of receipts**. Costs of meals, sleepers, or hotel accommodations used en route, are not included in the refunds.

Lodging refunds will be based upon a 75-cent per day allowance for two days only for all women chaperons and not more than two contestants. Lodging refunds cannot be obtained unless the housing provided for contestants is occupied.

The committee will not pay for contestants' and chaperons' meals, nor for the transportation of chaperons and coaches.

In order to secure refunds, principals and coaches must consult Professor B. E. Thomas at the Student Union Office, Saturday from 9 a.m. to 12. Failure to do so may delay refunds for a considerable time.

Housing and Chaperons

The Interscholastic committee will arrange for, but not pay for, housing of all contestants and chaperons. See paragraph on "Expenses," page 6 for information on housing refunds. Girl contestants and their chaperons will be housed in private homes, or, if possible, in the University residence halls. Boy contestants will be housed in hotels, motels, etc. Principals, chaperons and coaches must assume responsibility for the deportment of their charges. Should hotels prove damages caused by contestants, or report failure to pay obligations incurred, the committee will withhold payment of travel expenses or disqualify the offending school from participation in future Interscholastic meets.

If two or more schools plan to place their contestants under the supervision of the same coach or chaperon, they must notify the committee not later than the last day set for receipt of entry blanks. Otherwise it may be impossible to secure lodging for contestants in the same place selected for coaches or chaperons.

Because the committee feels that no school should send contestants to Interscholastic without competent chaperons, it reserves the right to refuse lodging to unaccompanied contestants. The committee insists that coaches and chaperons stay with their charges, except during actual competition.

Contestant badges and lodging assignment will be given to all coaches and chaperons. Application for these should be made at the Interscholastic headquarters in the Student Union building. The badges will admit their holders to all Interscholastic events.

General Rules

1. A contestant may take part in as many different divisions of Interscholastic as he wishes. However, he should study the program carefully to be sure he will not encounter conflicts in time. The committee cannot adjust the Interscholastic program to fit the time of any one contestant. If, due to a conflict, he is not present when an event is called, he will give up his right to participate in that event.

2. All contestants will be expected to participate in the events for which they have been trained and in which they have been entered. No expenses will be paid for a contestant who does not take part in at least one event.

3. For specific rules governing track, tennis, golf, debate, original oratory, declamation, and the editorial association look under those headings elsewhere in this pamphlet.

Track Events

POINTS IN THE 1950 TRACKMEET

CLASS A

1. Missoula	80	8. Anaconda	7
2. Great Falls	45	9. Butte Central	4
3. Helena	30½	10. Custer Co.	2½
4. Butte Public	22½	11. Sidney	2
5. Billings	11	12. Gallatin Co.	½
6. Dawson Co.	9	13. Havre	½
7. Flathead Co.	8½		

CLASS B

1. Hamilton	27⅛	16. Twin Bridges	3½
2. Columbia Falls	22	17. Darby	3
3. Forsyth	17	18. Victor	3
4. Corvallis	16⅝	19. Manhattan	3
5. Plains	16⅛	20. Melstone	3
6. Polson	15	21. Thompson Falls	3
7. Anaconda Central	12	22. Lincoln Co.	2½
8. Hardin	12	23. Choteau	2
9. Ronan	12	24. Columbus	2
10. Stevensville	10⅝	25. Moore	2
11. Libby	10¼	26. Browning	½
12. Whitefish	8	27. Ennis	½
13. Powell Co.	6	28. Cut Bank	¼
14. Terry	6	29. St. Ignatius	¼
15. Beaverhead	5¼		

Montana Interscholastic Track Records

Meet records are the best marks established in any event in the meet regardless of whether established by Class A or Class B school contestants. To stand, records must be established at the Interscholastic meet.

Event	Record	Holder
100-yard dash	9.8 sec.	R. O'Malley, Butte, 1933
220-yard dash	21.6 sec.	R. O'Malley, Butte, 1933
440-yard dash	50.4 sec.	M. Reynolds, Missoula, 1950
880-yard run	1:58.8	B. Rife, Custer County, 1949
Mile run	4:27.6	J. Kittel, Missoula, 1945
High hurdles	14.8 sec.	Don McAuliffe, Butte, 1948
Low hurdles	22.8 sec.	D. Yovetich, Butte, 1941
		Equalled by G. Welsh, Butte, 1945
Pole vault	12 ft. 10 in.	W. Custer, Missoula, 1930
Javelin throw	197 ft. 5 in.	R. Gustafson, Corvallis, 1938
Shot put	52 ft. 8½ in.	L. Perry, Great Falls, 1948
Discus throw	151 ft. 1¼ in.	L. Perry, Great Falls, 1947
High jump	6 ft. 3 in.	S. Muchmore, Drummond, 1940
Broad jump	22 ft. 3¾ in.	D. Hamilton, White Sulphur Spgs., 1931
Half Mile Relay	1 min. 33 sec.	Great Falls, 1950

Rules Governing Track

(See General Rules, page 7)

1. The rules of the National Collegiate Athletic Association will govern all contests in athletics, including disqualification for second false start in all races.

2. All students certified to take part in this meet must be eligible in accordance with the rules of eligibility adopted by the Montana High School Association.

3. The meet will be run off in A and B divisions. Any B school may compete in the A division, but it must make its choice on the entry blank submitted to the committee on May 7. If a B school chooses the A division, it will be declared in every way an A school.

4. The committee believes that athletes have a better chance for success if entered in only a few events. While the number of men listed in the entry blank is limited only by the restriction of the number of entries permitted in each event; not more than ten from any school will be allowed to participate in track and field events and no more than two contestants from the same school will be allowed to compete in the same event. A maximum of five men may be entered in each track and field event on the official entry blank. These contestants will be listed with the two men who are the most probable actual competitors in each event named first and second. Men named in the third, fourth, or fifth places on the entry blank may be substituted as actual participants for either or both of those listed first and/or second provided the coach or principal of the school concerned notifies the meet manager in writing not later than 6 p.m. on the Tuesday prior to the opening day of the track meet. In all instances where no such notification is received prior to this deadline all entries except the first two in each event will be scratched from the official entry list for that event.

5. Representatives of competing schools will meet in the University gymnasium at 9:00 a.m. Friday, May 18, to make the following time-saving arrangements:

a. Scratch official entry lists so that only the actual competitors remain in any event except the relays.

b. Assign and draw for heats in the running events and flights in the field events in which preliminaries are necessary.

c. Draw for lanes for contestants in the running event trials and for the order of competition in field event trials.

The coach (or other official representative) of each participating school must be present at this meeting. Entries of

schools not represented will be scratched from all events requiring preliminaries. Harry F. Adams or Charles Hertler, the track meet managers, will represent any school whose coach cannot be present if they are informed in writing, before the meeting, of the coach's actual entries in each event. Responsibility for supplying written instructions to the meet managers will rest upon the school and coach concerned.

6. Coaches, trainers, attendants and entries who have been scratched will not be allowed on the field during the meet. Contestants competing in Friday's events must be in uniform and must be wearing their contestant's number in order to gain admittance to the field. Only those contestants who are actually competing in the finals on Saturday will be allowed on the field. Relay runners who have not qualified in the other events of Saturday's program will be admitted only when it is time for them to warm up for that event. A section of the stadium will be reserved for contestants.

7. In determining scores for the awarding of prizes in track and field events, the first place shall count 6 points; second place, 4 points; third place, 3 points; fourth place, 2 points; fifth place, 1 point. One fourth of the points scored by each team placing in the relay will be credited to each member of that relay team, in determining individual high point winners. Should the referee declare a tie for any place in any event the point or points scored shall be divided.

8. All contestants must wear jerseys so that numbers may be pinned on their backs.

Program of Track Events

Class A races will precede Class B except as specifically indicated on program.

FRIDAY, MAY 18, 1:30 P.M.

Parade of Athletes.

Trials of 100-yard dash. (First two qualify for semi-finals)

Trials of 120-yard high hurdles. (First three qualify for semi-finals).

Semi-finals, 100-yard dash. (First two qualify for finals).

Semi-finals, 120-yard high hurdles. (First three qualify for finals).

Trials, 440-yard run. (First two qualify for finals).

Final, mile run, Class B.

Trials, 220-yard dash. (First two qualify for semi-finals).

Final, 880-yard run, Class A.

Trials, 180-yard low hurdles. (First two qualify for semi-finals).

Semi-finals, 220-yard dash. (First two qualify for finals).

Finals in the Class B pole vault and in the Class A high jump will be held concurrently with the running events.

Trials in the following field events will be held with participants competing in flights of not to exceed 12 men at a time: Class B discus throw (on practice field north of Dornblaser field), Class A shot put, Class B javelin throw, and Class A broad jump (all on Dornblaser field); followed by Class B shot put, Class A javelin throw, Class B broad jump (all on Dornblaser field), and Class A discus throw (on practice field north of Dornblaser field).

SATURDAY, MAY 19, 1:30 P.M.

Finals, 100-yard dash.

Finals, 120-yard high hurdles.

Final, 880-yard run, Class B.

Semi-finals, 180-yard low hurdles. (First two qualify for finals).

Finals, 440-yard run.

Final, mile run, Class A.

Finals, 220-yard dash.

Finals, 180-yard low hurdles.

Finals, 880-yard relays. (Both Class A and Class B relays will be run in lanes with staggered starts, and on a comparative time basis if there are more than five teams in either class.)

Finals of the Class A pole vault and Class B high jump will be held concurrently with the running events.

Finals of the weight events and broad jump will be held as follows: Class A shot put, Class B discus throw, Class A broad jump; followed by Class A discus throw, Class B shot put, Class B broad jump; followed by Class A javelin throw and Class B javelin throw.

The Committee reserves the right to qualify more contestants than the above calls for, and to eliminate any semi-final found to be unnecessary.

All 440, 880 and mile races will be started at the head of the straightaway (thus eliminating the first turn.)

Golf and Tennis Tournament

Winner in Girls' Golf Tournament for 1950: Gerry Pochervina, Butte Public High School.

Winner in Boys' Golf Tournament for 1950: Chuck Scovern, Great Falls High School.

Winners in Girls' Tennis Tournament for 1950: Singles, Betty Oberhofer, Custer County High School. Doubles, Virginia Jones and Betty Oberhofer, Custer County High School.

Winners in Boys' Tennis Tournament for 1950: Singles, Dick Fletcher, Billings High School. Doubles, Dick Fletcher and Dave Cohen, Billings High School.

Rules Governing Tennis and Golf

(See General Rules, Page 7)

Coaches may submit as many names as they wish on the entry blank, but no more than two from any one school may compete in the girls' golf tournament, the boys' golf tournament, the girls' tennis singles, and the boys' tennis singles. In tennis doubles, two boys teams and two girls teams from each school may be entered. Contestants entered in the tennis singles may also enter in the doubles.

Tournaments are arranged for both boys and girls. Entries must be sent on the regular entry blanks. (See "Entry Blanks," Page 6.) The committee will pay no expenses of the entrants in these tournaments.

Golf. Boys' tournament. A 36-hole medal-play tournament, 18 holes on Friday morning and 18 holes on Saturday morning, starting at 8 a. m. on the Missoula Country Club golf course. See program of meet pages 4 and 5.

Girls' Tournament. An 18-hole medal-play tournament, 9 holes on Friday morning and 9 holes on Saturday morning, starting at 10:30 a. m. at Missoula Country Club golf course.

Tennis. Boys' tournament. Singles and doubles Friday at 8 a. m. to 7 p. m. and Saturday at 8 a. m. to 7 p. m. Men's gymnasium and University courts.

Girls' tournaments. Singles and doubles Friday 8:30 a. m. to 7 p. m. and Saturday 8:30 a. m. to 7 p. m. Women's gymnasium and University courts.

There will be two single elimination tournaments in doubles for the boys and two for the girls.

If a school enters two teams in the boys' doubles and two in the girls' doubles, the teams must be ranked as first or second teams.

Teams will be grouped on the basis of rank.

Because the second ranked teams will start their tournament

when the singles tournament starts, they will not be allowed to enter the singles tournament.

Awards will be given to the winners of the tournaments in which first ranked players participated.

Interscholastic Editorial Association

All-State Honors for 1950.

Kyote, Billings high school; **Flathead Arrow**, Flathead County high school, Kalispell; **Konah**, Missoula County high school, Missoula; **Dawson Herald**, Dawson County high school, Glendive; **Stampede**, Havre high school; **Laurel Leaves**, Laurel high school; **Rosarian**, Rosary high school, Bozeman; **Central Breeze**, Whitefish high school; **Pow-Wow**, Ronan high school; **Cone-let**, Sacred Heart Academy, Missoula; **Bda Wauka**, Medicine Lake high school; **Carter Broadcaster**, Carter County high school, Ekalaka; **Columbus Hi-Lite**, Columbus high school; **Spokesman**, Sidney high school; **Evergreen**, Lincoln County high school, Eureka; **Cannon Report**, Fort Benton high school; **Fair Facts**, Fairview high school; **Jolitana**, Joliet high school; **Park City Bluffs**, Park City high school; **Shovel**, Colstrip high school; and **Ryegate's Hi Views**, Ryegate high school.

The Montana Interscholastic Editorial Association will meet in the Journalism building at 9:00 a. m. Friday. Each member school is entitled to two voting delegates, each of whom will receive a contestant badge. Delegates, however, must be listed on the school's entry blank. (See page 6).

Annual newspaper ratings will be announced at the close of the Friday morning session. Awards in this contest will be made upon the basis of the following classification:

Class A—Printed publications from schools with enrollments of 500 or more.

Class B—Printed publications from schools with enrollments between 250 and 500.

Class C—Printed publications in schools with enrollments of 250 or less.

Class D—Duplicated papers from schools with enrollments of 75 or more.

Class E—Duplicated papers from schools with enrollments less than 75.

Class F—Papers which are published as inserts or departments in community newspapers.

Papers in each class will be rated All-State, Superior, Excellent, Good, Fair, or no rating.

For further information write to Prof. Robert Struckman, State University, Missoula, Montana.

Speech Events

Sweepstakes winner, 1950: St. Mary's High School, Great Falls.

A trophy is awarded by the Montana High School Speech League to the school scoring the greatest number of points in all events.

Declamation

Winners for 1950: Serious declamation, Colleen Tierney, Girls' Central high school, Butte; Humorous declamation, Sally Kirkpatrick, Flathead County; Oratorical declamation, Tom Ellis, Ronan high school.

Rules governing Declamatory Contest.

(See General Rules, Page 7)

1. While both boys and girls may participate, there will be no separate boys' and girls' contests. Instead, three different types of declamation may be presented: serious or dramatic declamation, humorous declamation, and oratorical declamation.

2. If a coach wishes to indicate the name of an alternate for his declaimers, he may do so on the regular entry blanks sent by the Interscholastic committee to high school principals on or about April 22. Take care to specify that the student is an alternate and not a regular contestant. This is the only method by which an alternate will be admitted on the program.

3. Each school may enter a **maximum of three speakers**, distributing this number among the above categories in any way the principal or coach desires.

4. There will be preliminary, semi-final, and final contests.

5. A general assembly of contestants, coaches, and judges will be held in the Bitterroot Room of the Student Union building, Friday, May 18 at 8:00 a. m., where instructions will be given and contestants sent to their different divisions. **All concerned should report promptly.** Semi-final contests will be held in the following places immediately after the preliminaries are over: serious or dramatic declamation in Library 103; humorous declamation in Business Ad-Education Building 109; oratorical declamation in Business Ad-Education Building 112.

6. Only six speakers will participate in the final contest Friday evening, and to each of these a medal will be awarded.

7. Declaimers are urged to avoid hackneyed, or intensely dramatic or melo-dramatic selections.

8. No selection may take longer than **ten minutes** to de-

liver; contestants exceeding this limit will not be considered in choosing winners.

9. Judges shall base their judgment on the speaker's ability to communicate what he has to say. Such communication will depend on the speaker's understanding and appreciation of the writing, intellectual and emotional, and his impartation of it to his hearers.

10. No declamation (oratorical, serious or humorous) which has been given by the first place winner in the year immediately preceding shall be permitted to be used in the finals of the declamation contest. The winning declamations of 1950, which are consequently barred in the 1951 finals are: "Sorry, Wrong Numbers" (Fletcher); "Rebecca" (DuMaurier); "The Little Gentleman from Penrod" (Tarkington); "The Picture Problem" (Cardell); "The Big Parade" (Carty); and "The American Bill of Right" (LeTourneau).

11. For further information address Prof. R. A. Coleman, Montana State University, Missoula, Mont.

Debate

Winners for 1950: Team, St. Mary's High School, Great Falls; Best Individual Debater, Cathy Doherty, Sacred Heart Academy, Missoula.

Question for 1951: Resolved. That the American People Should Respect the Welfare State.

All communications concerning debate should be addressed to Ralph Y. McGinnis, director, Montana High School Speech League, Montana State University, Missoula, Montana.

Provisions for Debate Tournament

1. All high schools, which are eligible to belong to the Montana High School Speech League, shall be eligible to participate in debate. Pairings of teams and determinations of sides shall be by lot.

2. The tournament will begin Friday, May 18, at 10 a. m. Coaches of all teams will meet in Room 102 of the Library for the pairings. Three rounds will be held Friday with all teams debating. The state championship debate will be in the Student Union auditorium at 4:30 p. m., Saturday, May 19.

3. All teams will debate four preliminary rounds. The eight highest ranking teams will enter the elimination rounds during which one defeat will eliminate a team from further competition.

4. Names of all debaters and coaches must be listed on the entry blank which will be sent to school principals on or about

April 22. The names of all entries must be in the hands of the Interscholastic committee by May 7.

5. Subject to change by mutual agreement of participants and coaches, all debates shall be conducted in accordance with the cross-examination plan provided for in the league constitution.

Extemporaneous Speaking

Winner for 1950: Dan Austin, Great Falls High School.

All communications concerning extemporaneous speaking should be addressed to Ralph Y. McGinnis, Montana State University, Missoula, Mont.

Provisions for the Extemporaneous Speaking Contest

1. One hour before speaking, the contestant will draw by lot three specific speech topics based on the following general subjects:
 - a. The 1951 United States Congress.
 - b. The United Nations, 1950-51.
 - c. Education in the U. S.

The specific speech topics will have been chosen from materials appearing in the January, February, March and April issues of *Time*, *Scholastic*, and *Readers Digest* magazines.

2. The contestant will then choose one of the three as the subject for his speech and return the other two.
3. The contestant will have one hour for the preparation of his speech. The University library will be open to his use.
4. At the scheduled time for beginning the contest, the contestants will draw numbers by lot to determine the speaking order.
5. Maximum time limit for speaking will be 8 minutes. Minimum time limit will be 5 minutes.
6. The contest will begin Friday, May 18, at 8 a.m. Drawings for topics will be in Room 102, of the Library. Contestants will take part in two preliminary rounds. The highest ranking 12 will speak in the semi-finals. The highest ranking six will speak in the finals.
7. Names of all extemporaneous speakers and coaches must be listed on the entry blanks which will be sent to school principals on or about April 22. The names of all entries must be in the hands of the Interscholastic committee by May 7.

Original Oratory

Winner for 1950: Colleen Tierney, Girls' Central High School, Butte.

All communications concerning oratory should be addressed to Ralph Y. McGinnis, Montana State University, Missoula, Mont.

Provisions for Oratory Tournament

1. Orations must be written originally by the students delivering them. The maximum time limit is 10 minutes. Sectioning and speaking order will be determined by lot.

2. The tournaments will begin Friday, May 18, at 8 a. m. Contestants and coaches will meet in Room 102 of the Library for instructions. Contestants will take part in two preliminary rounds; the winners, not exceeding six, from the preliminary rounds will speak in the semi-finals. Two finalists will be chosen to speak in the final program.

3. Names of all orators must be listed on the entry blank which will be sent to school principals on or about April 22. The names of all entries must be in the hands of the Inter-scholastic committee by May 7.

4. For further rules concerning oratory, see the by-laws for oratory of the Montana High School Speech League Constitution.

Little Theatre Festival

Winners for 1950:

Plays in Simpkins Little Theatre:

Best actor—Kenneth Marceau, Missoula County

Best actress—Marjorie Lovberg, Missoula County

Best character actor—Maurice Clemmons, Billings Central

Best character actress—Betty Suiter, Billings

Best bit actor—Tom Schuyler, Billings

Best bit actress—Laurel Seward, Missoula County

Plays in the Student Union Theatre:

Best actor—Richard Lucas, Havre

Best actress—Katherine Wilkins, Havre

Best character actor—Garry Reese, Flathead County, Kalispell

Best character actress—Mabel Orr, Ronan

Best bit actor—Ronnie Lothrop, Anaconda

Best bit actress—Darlene McDonald, Anaconda

Most promising actor—Tom Ellis, Ronan

Most promising actress—Ramona Tanner, Hamilton

Most promising character actor—Conrad Clifford, St. Mary's, Helena

Most promising character actress—Eva Hallum, Flathead County, Kalispell

Most promising bit actor—Jerome Grieder, Gallatin, Bozeman

Most promising bit actress—Doris Thompson, Hot Springs

The non-competitive festival form of participation will be used in the Little Theatre again this year.

One act plays or cuttings from longer plays, neither exceeding 35 minutes in playing time nor being less than 20 minutes and involving not more than one set of scenery, may be entered.

Adjudicators will comment on all Festival entrants. The evening program will consist of four plays selected by the adjudicators for imagination, excellence of acting, and quality of production. Since half the entrants will play in Simpkins Little Theatre and half play in the Student Union Theatre with an adjudicator in each theatre, identical medals will be awarded among each group of entrants as follows:

Best actor, best actress, best character actor, best character actress, best bit actor and best bit actress.

In addition, the literature section of the Missoula Woman's Club will give the following awards to entrants of schools appearing in the morning and afternoon and not appearing in the evening program: a medal for the most promising actor, most promising actress, most promising character actor, most promising character actress, most promising bit actor, most promising bit actress.

Prizes

Prizes in Athletics

1. The Missoula Mercantile presents two cups, one to be awarded to the winner in Class A and one to the winner in Class B. These cups are awarded each year to the winners of the track and field meet, to be held for one year. They will be awarded permanently in 1953 to the school which shall have won the greatest number of points in five meets.

2. The Kiwanis cup, given by the Kiwanis club of Missoula, is awarded each year to the team breaking or equaling the largest number of records in the track and field meet. The cup is to be held for one year but will be awarded permanently in 1953 to the team which shall have broken or equalled the largest number of records in five meets.

3. A Rotary cup, given by the Rotary club of Missoula, is awarded permanently to the winning team in each division.

4. The Lions Cup, presented by the Lions club of Missoula, is awarded in the Class A division, **but competition for it is limited to Class A schools which do not play a Class AA football schedule.** It is awarded to the school in this group scoring the highest number of points in the meet.

5. Two University Relay plaques, given by the University, will be presented to the schools winning the relay races.

6. The University gives gold, silver and bronze medals, suitably engraved, and blue and red ribbons, for winners of first, second, third, fourth and fifth places in all track and field events for both A and B schools—a total of 140 prizes for the 14 athletic events.

7. The University will also give an individual prize to the contestant winning the greatest number of points in each division.

8. In the boys' golf tournament, gold, silver, and bronze medals will be awarded to the winners of first, second and third places, respectively. In the girls' golf tournament, a gold medal will be awarded to the winner. In both the boys' and girls' tennis tournaments, three gold medals will be awarded, one to the winner of the singles contest, one to each member of the winning team in the doubles contest, and three silver medals to the runner-up in the singles contest and to each member of the runner-up team in the doubles.

9. Gold and silver medals are awarded for places in the various divisions of declamation: in debate, original oratory, and extemporaneous speaking. Medals are also awarded in the several categories of judging in the Little Theatre Festival.



