

*May 1953 Interscholastic Meet - Announcements*

ARCHIVES

*The Climax of the High School Year*

Forty-  
Seventh

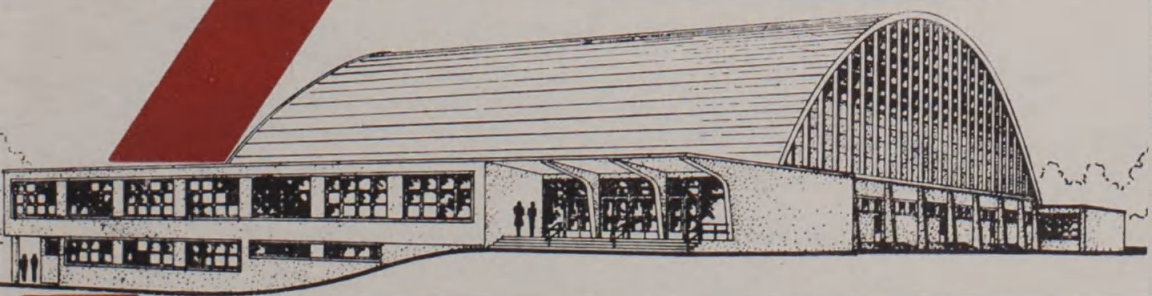
# Interscholastic

*Announcement*

**Friday**  
and  
**Saturday**

**MAY**  
**15-16**  
**1953**

View of proposed Field House. Montana State University intends its construction will contribute to larger and more inclusive Interscholastic Meets in the future.



**FIELD HOUSE**  
**MONTANA STATE UNIVERSITY**  
MISSOULA, MONTANA

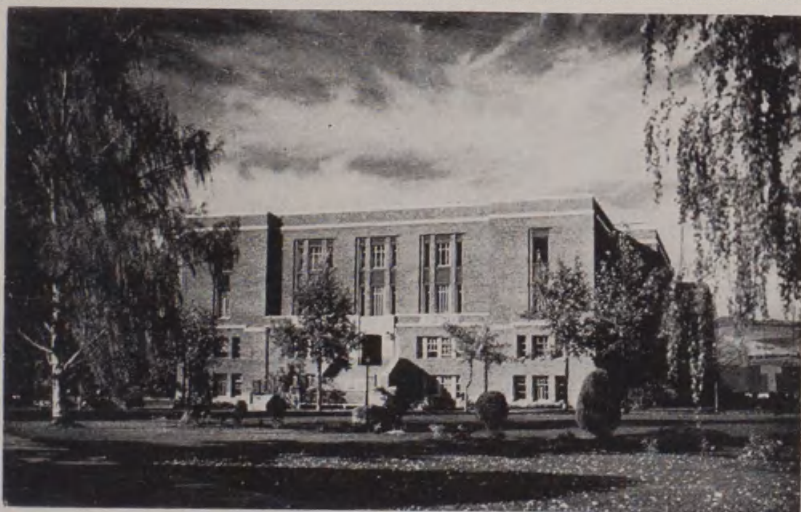
# The Interscholastic Committee

J. W. HOWARD, General Chairman

C. F. Hertler and Harry F. Adams	Co-Managers of Athletics
Junior Chamber of Commerce	Ticket Sales
L. Leland Durkee	Transportation
Paul Bischoff	Entertainment of Men
Miss Maurine Clow	Entertainment of Women
Herbert M. Carson	Declamation
Ralph Y. McGinnis	Debate, Original Oratory, and Extemporaneous Speaking
Andy Cogswell	Publicity and Program
David W. Weiss	Little Theatre
Robert Struckman	Editorial Association
Vince V. Wilson	Tennis and Golf
Herbert Wunderlich	Counselor
R. A. Diettert and John Suchy	Gatekeepers
T. G. Swearingen	Head Scorer and Physical Equipment
Pat O'Hare and Hugh deMers	Student Members

(Special note to coaches: See changes in tennis, page 12)

# Interscholastic Headquarters



**Student Union Building**

## General Information

The Montana Interscholastic offers competition to Montana high school youths in track, golf and tennis (boys' and girls'), debate, original oratory, extemporaneous speaking, declamation and dramatics. It also offers semi-competition for high school newspapers through the critical service of the Montana Interscholastic Editorial Association, sponsored by the Montana State University School of Journalism.

All student contact, however, is not competitive. In dramatics, for example, the non-competitive Little Theatre Festival gives festival entrants an opportunity to receive careful evaluation and detailed comment on their dramatic efforts. The Interscholastic Editorial Association meeting is non-competitive. Its great value lies in the three-day contact of students having common problems.

Members of the Interscholastic Committee encourage competition when it tends to give the greatest value to participants; they discourage it where it tends to overshadow the returns to individual students.

# Program of the Meet

FRIDAY, MAY 15

- 8:00 a.m. **Boys' Golf**, All contestants meet in front of Student Union building for transportation to Missoula Country Club course.
- 8:00 a.m., **Boys' Tennis**, All participants report to Men's gymnasium.
- 8:00 a.m., **Extemporaneous Speaking**, Drawings for topics in Library 102.
- 8:00 a.m., **Original Oratory**, Round I (preliminary meeting in Library 102).
- 8:00 a.m., **Declamation**, Meeting of all contestants, Bitterroot Room, Student Union building. Preliminary and semi-final contests will follow this meeting.
- 8:30 a.m., **Boys' Tennis**, (singles and doubles) University courts.
- 8:30 a.m., **Girls' Tennis**, All participants report to Women's gymnasium.
- 9:00 a.m., Meeting of athletic representatives of all schools at Men's Gym.
- 9:00 a.m., to 7:00 p.m., **Girls' Tennis** (singles and doubles) University courts.
- 9:00 a.m., **Original Oratory**, Round II.
- 9:00 a.m., **Extemporaneous Speaking**, Round I.
- 9:00 a.m., **Interscholastic Editorial Association**, Journalism building.
- 10:00 a.m., **Debate**, Round I (preliminary meeting in Library 102).
- 10:30 a.m., **Girls' Golf**, tournament at Missoula Country Club course.
- 11:00 a.m., **Original Oratory**, Round III (semi-finals).
- 1:00 p.m., **Debate**, Round II.
- 1:30 p.m., **Track and Field Meet**, (parade of athletes) Dornblaser field (see program of events, page 10).
- 2:00 p.m., **Extemporaneous Speaking**, Drawing for topics, Library 102.
- 2:30 p.m., **Original Oratory**, Round III (semi-finals).
- 3:00 p.m., **Extemporaneous Speaking**, Round II.
- 4:00 p.m., **Debate**, Round III.
- 6:00 p.m., **Annual Banquet** of Montana Speech League.
- 7:15 p.m., **Singing on the Steps**, University Hall.
- 8:00 p.m., **Declamation and Original Oratory**, Finals, Student Union auditorium.

# Program of the Meet

SATURDAY, MAY 16

- 8:00 a.m., **Boys' Golf Tournament**, Missoula Country Club course.
- 8:00 a.m., **Boys' Tennis**, all participants report to Men's Gymnasium.
- 8:00 a.m., **Debate**, Round IV.
- 8:00 a.m., **Girls' Tennis**, all contestants report to Women's Gymnasium.
- 8:30 a.m., to 7:00 p.m., **Boys' Tennis** (singles and doubles) University courts. If matches are not completed Friday and Saturday, they will be continued on Sunday.
- 8:30 a.m., **Little Theatre Festival**, Simpkins Little Theatre and Student Union Theatre.
- 9:00 a.m. to 12 noon, **Travel Refunds**, Principals and coaches confer with Professor Durkee, Student Union building.
- 9:00 a.m., to 7:00 p.m., **Girls' Tennis**, (singles and doubles) University courts. If tennis matches are not completed on Friday and Saturday they will be continued Sunday.
- 9:00 a.m., **Extemporaneous Speaking**, Drawing for topics, Library 102.
- 10:00 a.m., **Extemporaneous Speaking**, Round III.
- 10:30 a.m., **Debate**, Round V (quarter finals).
- 12:00 noon, **Luncheon** meeting of teachers of English, Drama and Speech.
- 1:30 p.m., **Debate**, Semi-finals.
- 1:30 p.m., **Track and Field Meet**, finals.
- 1:30 p.m., **Little Theatre Festival**, Simpkins Little Theatre and Student Union Theatre.
- 2:00 p.m., **Extemporaneous Speaking**, Drawing for topics, Library 102.
- 3:00 p.m., **Extemporaneous Speaking**, finals.
- 4:30 p.m., **Debate**, finals, Bitterroot room, Student Union building.
- 8:15 p.m., **Little Theatre Festival** and awarding of prizes, Student Union Theatre.

## Entry Blanks

An official entry blank will be sent out to all schools about April 22. This should be filled out at once and returned to Dr. J. W. Howard, chairman, Interscholastic Committee, Montana State University, Missoula, Montana.

Names of all contestants in track, golf, tennis, journalism, debate, original oratory, extemporaneous speaking and declamation must be submitted on the official entry blanks, and be in the hands of the committee by May 4. Later entries cannot be accepted. To insure prompt delivery, the entries should be sent by registered mail.

It is extremely important that schools indicate at the proper place on the blanks, when and how their contestants will arrive. Members of the University's two sophomore service organizations, Bear Paw and Spur, will meet all incoming trains. All teams and participants should report immediately upon arrival to the Interscholastic Headquarters in the Student Union Building on the campus. Here quarters will be assigned and contestant badges issued.

All correspondence relative to the meet in general should be addressed to Dr. J. W. Howard, chairman, Interscholastic Committee. Letters or telegrams requesting specific information may be addressed to committee members having charge of specific events. For a list of these names, see the inside front cover.

## Expenses

By pro-rating the net earnings of Interscholastic among the various schools entered, the committee has in the past been able to refund the transportation costs of two contestants from each school entered. The committee cannot guarantee these expenses, but since the institution of the pro-rating plan, refunds have been 100 per cent.

Transportation refunds are based upon round-trip fares on the shortest **bus route** to Missoula for two contestants from each fully accredited high school entered in track, declamation, debate or Little Theatre. Costs of meals, sleepers, or hotel accommodations used en route, are not included in the refunds.

Lodging refunds will be based upon a 75-cent per day allowance for two days only for all women chaperons and not more than two contestants. Lodging refunds cannot be obtained unless the housing provided for contestants is occupied.

The committee will not pay for contestants' and chaperons' meals, nor for the transportation of chaperons and coaches.

In order to secure refunds, principals and coaches must consult Professor L. L. Durkee at the Student Union Office, Saturday from 9 a.m. to 12. Failure to do so may delay refunds for a considerable time.

# Housing and Chaperons

The Interscholastic committee will arrange for, but not pay for, housing of all contestants and chaperons. See paragraph on "Expenses," page 6, for information on housing refunds. Girl contestants and their chaperons will be housed in the University residence halls, if possible, or in private homes. Boy contestants will be housed in hotels, motels, etc. Principals, chaperons and coaches must assume responsibility for the department of their charges. Should hotels prove damages caused by contestants, or report failure to pay obligations incurred, the committee will withhold payment of travel expenses or disqualify the offending school from participation in future Interscholastic meets.

If two or more schools plan to place their contestants under the supervision of the same coach or chaperon, they must notify the committee not later than the last day set for receipt of entry blanks. Otherwise it may be impossible to secure lodging for contestants in the same place selected for coaches or chaperons.

Because the committee feels that no school should send contestants to Interscholastic without competent chaperons, it reserves the right to refuse lodging to unaccompanied contestants. The committee insists that coaches and chaperons stay with their charges, except during actual competition.

Contestant badges and lodging assignment will be given to all coaches and chaperons. Application for these should be made at the Interscholastic headquarters in the Student Union building. The badges will admit their holders to all Interscholastic events.

## General Rules

1. A contestant may take part in as many different divisions of Interscholastic as he wishes. However, he should study the program carefully to be sure he will not encounter conflicts in time. The committee cannot adjust the Interscholastic program to fit the time of any one contestant. If, due to a conflict, he is not present when an event is called, he will give up his right to participate in that event.

2. All contestants will be expected to participate in the events for which they have been trained and in which they have been entered. No expenses will be paid for a contestant who does not take part in at least one event.

3. For specific rules governing track, tennis, golf, debate, original oratory, declamation, and the editorial association look under those headings elsewhere in this pamphlet.

# Track Events

## POINTS IN THE 1952 TRACKMEET

### CLASS A

1. Helena .....	47½	7. Sidney .....	5
2. Missoula .....	46	8. Custer Co. ....	4
3. Butte .....	39½	9. Fergus Co. ....	4
4. Billings .....	29	10. Dawson Co. ....	3
5. Great Falls .....	25	11. Butte Central ..	1
6. Flathead Co. ....	19	12. Park Co. ....	1

### CLASS B

1. Polson .....	35	17. Ronan .....	4
2. Corvallis .....	18½	18. Plains .....	4
3. Columbia Falls ..	18	19. Browning .....	3½
4. Hardin .....	15	20. Roy .....	3
5. Hamilton .....	12	21. Park City .....	3
6. Whitefish .....	12	22. Carter Co. ....	3
7. Belt .....	11	23. Valier .....	2
8. Wolf Point .....	10	24. St. Ignatius ....	2
9. Granite Co. ....	9½	25. Beaverhead Co. ..	2
10. Choteau .....	9	26. Colstrip .....	1½
11. Billings Central ..	9	27. Stevensville ....	1
12. Powell Co. ....	7	28. St. Regis .....	1
13. Fort Benton .....	7	29. Lodge Grass .....	1
14. Sunburst .....	6	30. Forsyth .....	1
15. Laurel .....	6	31. Ennis .....	1
16. Twin Bridges .....	5	32. Dixon .....	1

## Montana Interscholastic Track Records

Meet records are the best marks established in any event in the meet regardless of whether established by Class A or Class B school contestants. To stand, records must be established at the Interscholastic meet.

Event	Record	Holder
100-yard dash	9.8 sec.	R. O'Malley, Butte, 1933
220-yard dash	21.6 sec.	R. O'Malley, Butte, 1933
440-yard dash	50.2 sec.	R. Strutz, Billings, 1951
880-yard run	1:58.8	B. Rife, Custer County, 1949
Mile run	4:27.6	J. Kittell, Missoula, 1945
High hurdles	14.8 sec.	Don McAuliffe, Butte, 1948
180-yd. low hdl.	20.4 sec.	C. Orr, Missoula, 1952
Pole vault	12 ft. 10 in.	W. Custer, Missoula, 1930
Javelin throw	197 ft. 5 in.	R. Gustafson, Corvallis, 1938
Shot put	52 ft. 8½ in.	L. Perry, Great Falls, 1948
Discus throw	151 ft. 1¼ in.	L. Perry, Great Falls, 1947
High jump	6 ft. 3¼ in.	M. Grimes, Helena, 1951
Broad jump	22 ft. 3¾ in.	D. Hamilton, White Sulphur Spgs., 1931
Half Mile Relay	1 min. 31.2 sec.	(D. and R. Halverson, J. Haslip, J. Griffith) Helena, 1951



# Rules Governing Track Events

1. Except for the method of scoring, the order of events and other exceptions noted in the following paragraphs, rules of the National Interscholastic Federation will govern all track and field events.

2. All students certified to take part in this meet must be eligible in accordance with the rules of eligibility adopted by the Montana High School Association.

3. The meet will be run off in A and B divisions. Any B school may compete in the A division, but it must make its choice on the entry blank submitted to the committee on May

4. If a B school chooses the A division, it will be declared in every way an A school.

4. Not more than 10 from any school will be allowed to participate in track and field events and no more than two contestants from the same school will be allowed to compete in the same event. A maximum of five may be listed on the entry blank in each track and field event. In the field events, these entries will be listed with the two who are the most probable competitors in each event named first and second. Men named in the third, fourth or fifth places on the entry blank may be substituted as actual contestants for either or both of those listed first and/or second, **provided the coach or principal of the school concerned notifies the meet manager in writing not later than 6 p.m. on the Tuesday before the opening day of the track meet.** In all instances where no such notification is received prior to this deadline, all entries in each jumping and weight throwing event **except the first two listed** will be scratched from the official entry list.

5. Representatives of competing schools will meet in the University gymnasium at 9 a.m. Friday, May 15, to make the following time-saving arrangements:

a. Scratch official entry lists so that only the actual competitors remain in any event except the relays.

b. Assign and draw for heats in the running events and flights in the field events in which preliminaries are necessary.

c. Draw for lanes for contestants in the running event trials and for the order of competition in field event trials.

The coach (or other official representative) of each participating school must be present at this meeting. Entries of schools not represented will be scratched from all events requiring preliminaries. **Harry F. Adams or Charles Hertler, the track**

meet managers, will represent any school whose coach cannot be present if informed in writing, before the meeting, of the coach's actual entries in each event. Responsibility for supplying written instructions to the meet managers will rest upon the school and coach concerned.

6. Coaches, trainers, attendants and entries who have been scratched will not be allowed on the field during the meet. Contestants competing in Friday's events must be in uniform and must be wearing their contestant's number in order to gain admittance to the field. Only those contestants who are actually competing in the finals on Saturday will be allowed on the field. Relay runners who have not qualified in the other events of Saturday's program will be admitted only when it is time for them to warm up for that event. A section of the stadium will be reserved for contestants.

7. In determining scores for the awarding of prizes in track and field events, the first place shall count 6 points; second place, 4 points; third place, 3 points; fourth place, 2 points; fifth place, 1 point. One fourth of the points scored by each team placing in the relay will be credited to each member of that relay team, in determining individual high point winners. Should the referee declare a tie for any place in any event the point or points scored shall be divided.

8. All contestants must wear jerseys so that numbers may be pinned on their backs.

## Program of Track Events

Class A races will precede Class B except as specifically indicated on program.

FRIDAY, MAY 15, 1:30 P.M.

Parade of Athletes.

Trials of 100-yard dash. (First two qualify for semi-finals)

Trials of 120-yard high hurdles. (First three qualify for semi-finals).

Semi-finals, 100-yard dash. (First two qualify for finals).

Semi-finals, 120-yard high hurdles. (First three qualify for finals).

Trials, 440-yard run. (First two qualify for finals).

Final, mile run, Class B.

Trials, 220-yard dash. (First two qualify for semi-finals).

Final, 880-yard run, Class A.

Trials, 180-yard low hurdles. (First two qualify for semi-finals).

Semi-finals, 220-yard dash. (First two qualify for finals).

Finals in the Class B pole vault and in the Class A high jump will be held concurrently with the running events.

Trials in the following field events will be held with participants competing in flights of not to exceed 12 men at a time: Class B discus throw (on practice field north of Dornblaser field), Class A shot put, Class B javelin throw, and Class A broad jump (all on Dornblaser field); followed by Class B shot put, Class A javelin throw, Class B broad jump (all on Dornblaser field), and Class A discus throw (on practice field north of Dornblaser field).

#### SATURDAY, MAY 16, 1:30 P.M.

Finals, 100-yard dash.

Finals, 120-yard high hurdles.

Final, 880-yard run, Class B.

Semi-finals, 180-yard low hurdles. (First two qualify for finals).

Finals, 440-yard run.

Final, mile run, Class A.

Finals, 220-yard dash.

Finals, 180-yard low hurdles.

Finals, 880-yard relays. (Both Class A and Class B relays will be run in lanes with staggered starts, and on a comparative time basis if there are more than five teams in either class.)

Finals of the Class A pole vault and Class B high jump will be held concurrently with the running events.

Finals of the weight events and broad jump will be held as follows: Class A shot put, Class B discus throw, Class A broad jump; followed by Class A discus throw, Class B shot put, Class B broad jump; followed by Class A javelin throw and Class B javelin throw.

The Committee reserves the right to qualify more contestants than the above calls for, and to eliminate any semi-final found to be unnecessary.

All 440, 880 and mile races will be started at the head of the straightaway (thus eliminating the first turn.)

# Golf and Tennis Tournament

Winner in Girls' Golf Tournament for 1952: Patricia Vaughn, Flathead County, Kalispell.

Winner in Boys' Golf Tournament for 1952: E. Woodland, Butte Public.

Winners in Girls' Tennis Tournament for 1952: Singles—A. Siverts, Dawson County, Glendive. Doubles—R. Perrior and S. Thomas, Missoula County.

Winners in Boys' Tennis Tournament for 1952: Singles—R. Megerth, Missoula County. Doubles—P. Jarding and F. Barres, Dawson County, Glendive.

## RULES GOVERNING TENNIS AND GOLF

(See General Rules, page 7)

Coaches may submit as many names as they wish on the entry blank, but no more than two from any one school may compete in the girls' golf tournament, and the boys' golf tournament. No more than one may compete in the girls' tennis singles and the boys' tennis singles. In tennis doubles, one boys' team and one girls' team from each school may be entered. Contestants entered in the tennis singles may also enter in the doubles.

Tournaments are arranged for both boys and girls. Entries must be sent on the regular entry blanks. (See "Entry Blanks," Page 6.) The committee will pay no expenses of the entrants in these tournaments.

**Golf.** Boys' tournament. A 36-hole medal-play tournament, 18 holes on Friday morning and 18 holes on Saturday morning, starting at 8 a.m. on the Missoula Country Club golf course. See program of meet, pages 4 and 5.

Girls' Tournament. An 18-hole medal-play tournament, 9 holes on Friday morning and 9 holes on Saturday morning, starting at 10:30 a.m. at Missoula Country Club golf course.

**Tennis.** Boys' tournament. Singles and doubles Friday, 8 a.m. to 7 p.m. and Saturday, 8 a.m. to 7 p.m. Men's gymnasium and University courts.

Girls' tournaments. Singles and doubles, Friday 8:30 a.m. to 7 p.m. and Saturday, 8 a.m. to 7 p.m. Women's gymnasium and University courts.

There will be one single elimination tournament in doubles for the boys and one for the girls.

A tennis clinic will be held at the conclusion of the tournament provided sufficient time is available.

Awards will be given to the winners of the tournaments in which first ranked players participated.

# Interscholastic Editorial Association

## All-State Honors for 1952:

**Iniwa**, Great Falls high school; **Konah**, Missoula County high school; **Kyote**, Billings Senior high school; **Nugget**, Helena high school; **Centralite**, Girls' Central high school, Butte; **Fergus**, Fergus County high school, Lewistown; **Signal Butte**, Custer County high school, Miles City; **Beaver**, Beaverhead County high school, Dillon; **The Pow Wow**, Ronan high school; **The Eagle**, Fairfield high school; **The Terrier**, Terry high school; **The Cliff Dweller**, Thompson Falls high school; **Sun River Valley Success**, Simms high school; **The Evergreen**, Lincoln County high school, Eureka; **The Hamiltonian**, Hamilton high school; **Cannon Report**, Fort Benton high school; **Bda Wauka**, Medicine Lake high school; **Carter Broadcaster**, Carter County high school, Ekalaka; **The Panther**, Valier high school; **Static**, Ennis high school; **Broad Views**, Broadview high school; **The Shovel**, Colstrip high school; **Klein Hi Messenger**, Klein high school; **The Pirate**, Victor high school; **Black and White**, Winnett high school; **Froid Flash**, Froid high school; **Beacon Flashes**, Alberton high school.

Six trophies will be awarded by Sigma Delta Chi, men's professional journalism fraternity. Three of these are large, traveling trophies which will be awarded to the schools submitting the best editorials to be judged, the best sports stories, and the best news features. A school winning one of these trophies three times will gain permanent possession. Three smaller trophies will be awarded permanently each year to the writers in the three categories.

The Montana Interscholastic Editorial Association will meet in the Journalism building at 9 a. m. Friday. Each member school is entitled to two voting delegates, each of whom will receive a contestant badge. Delegates, however, must be listed on the school's entry blank. (See page 6).

Annual newspaper ratings will be announced at the close of the Friday morning session. Awards in this contest will be made upon the basis of the following classification:

Class A—Printed publications from schools with enrollments of 500 or more.

Class B—Printed publications from schools with enrollments between 250 and 500.

Class C—Printed publications in schools with enrollments of 250 or less.

Class D—Duplicated papers from schools with enrollments of 75 or more.

Class E—Duplicated papers from schools with enrollments less than 75.

Class F—Papers which are published as inserts or departments in community newspapers.

Papers in each class will be rated All-State, Superior, Excellent, Good, Fair, or no rating.

For further information write to Prof. Robert Struckman, Montana State University, Missoula, Montana.

## Speech Events

Sweepstakes winner, 1952: (Tie) Great Falls and St. Leo's, Lewistown.

A trophy is awarded by the Montana High School Speech League to the school scoring the greatest number of points in all events.

## Declamation

Winners for 1952: Serious declamation, B. Connelly, Fergus Co.; Humorous declamation, S. Kretzer, Helena; Oratorical declamation, B. Huber, St. Leo's, Lewistown.

### Rules governing Declamatory Contest.

(See General Rules, Page 7)

1. While both boys and girls may participate, there will be no separate boys' and girls' contests. Instead, three different types of declamation may be presented: serious or dramatic declamation, humorous declamation, and oratorical declamation.

2. If a coach wishes to indicate the name of an alternate for his declaimers, he may do so on the regular entry blank sent by the Interscholastic committee to high school principals on or about April 22. Take care to specify that the student is an alternate and not a regular contestant. This is the only method by which an alternate will be admitted on the program. Also indicate clearly on blank whether contestant's presentation will be serious, humorous or oratorical.

3. Each school may enter a **maximum of three speakers**, distributing this number among the above categories in any way the principal or coach desires.

4. There will be preliminary, semi-final, and final contests. At the final contest, ribbons will be awarded to all participants in semi-final contests.

5. A general assembly of contestants, coaches, and judges will be held in the Bitterroot Room of the Student Union building, Friday, May 15 at 8 a.m., where instructions will be given and contestants sent to their different divisions. **All concerned should report promptly.** Semi-final contests will be held in the following places immediately after the preliminaries are over: serious or dramatic declamation in Library 103; humorous declamation in Business Ad-Education Building 109; oratorical declamation in Business Ad-Education Building 112.

6. Only six speakers will participate in the final contest Friday evening, and to each of these a medal will be awarded.

7. Declaimers are urged to avoid hackneyed, or intensely dramatic or melo-dramatic selections.

8. No selection may take longer than **ten minutes** to deliver; contestants exceeding this limit will not be considered in choosing winners.

9. Judges shall base their judgment on the speaker's ability to communicate what he has to say. Such communication will depend on the speaker's understanding and appreciation of the writing, intellectual and emotional, and his impartation of it to his hearers.

10. No declamation (oratorical, serious or humorous) which has been given in the finals of the year immediately preceding shall be permitted to be used in the finals of the declamation contest. For instance this year (1953) the following 1952 winning selections are barred: "Bury the Dead" (Shaw); "Joan of Lorraine" (Anderson); "Speech Judges' Nightmare" (Martin); "Hambock" (Cromley); "Which Way America" (Thompson); "Mr. Striker" (Walsh).

11. For further information address Prof. H. M. Carson, Montana State University, Missoula, Mont.

## Debate

**Winners for 1952:** Team, Shelby high school; Best Individual Debater, D. Monaco, St. Leo's, Lewistown.

**Question for 1953:** "Resolved: That the Atlantic Pact Nations should form a Federal Union."

All communications concerning debate should be addressed to Ralph Y. McGinnis, director, Montana High School Speech League, Montana State University, Missoula, Montana.

### Provisions for Debate Tournament

1. All high schools which are eligible to belong to the Montana High School Speech League shall be eligible to participate in debate. Pairings of teams and determinations of sides shall be by lot.

2. The tournament will begin Friday, May 15, at 10 a. m. Coaches of all teams will meet in Room 102 of the Library for the pairings. Three rounds will be held Friday with all teams debating. The state championship debate will be in the Bitterroot Room, Student Union building, at 4:30 p.m., Saturday, May 16.

3. All teams will debate four preliminary rounds. The eight highest ranking teams will enter the elimination rounds

during which one defeat will eliminate a team from further competition.

4. Names of all debaters and coaches must be listed on the entry blank which will be sent to school principals on or about April 22. The names of all entries must be in the hands of the Interscholastic committee by May 4.

5. Subject to change by mutual agreement of participants and coaches, all debates shall be conducted in accordance with the plan provided for in the league constitution.

## Extemporaneous Speaking

Winner for 1952: Jerry Rutan, Great Falls Central high school.

All communications concerning extemporaneous speaking should be addressed to Ralph Y. McGinnis, Montana State University, Missoula, Montana.

### Provisions for the Extemporaneous Speaking Contest

1. One hour before speaking, the contestant will draw by lot three specific speech topics based on the following general subjects:
  - a. The 1953 United States Congress.
  - b. The United Nations, 1952-53.
  - c. Conservation of American Natural Resources.

The specific speech topics will have been chosen from materials appearing in the January, February, March and April issues of Time, Scholastic, Readers Digest, and Newsweek magazines.

2. The contestant will then choose one of the three as the subject for his speech and return the other two.
3. The contestant will have one hour for the preparation of his speech.
4. At the scheduled time for beginning the contest, the contestants will speak according to the speaking order determined by lot.
5. Maximum time limit for speaking will be 8 minutes. Minimum time limit will be 5 minutes.
6. The contest will begin Friday, May 15, at 8 a.m. Drawings for topics will be in Room 102 of the Library. Contestants will take part in three preliminary rounds. The highest ranking six will speak in the finals.
7. Names of all extemporaneous speakers and coaches must be listed on the entry blanks which will be sent to school principals on or about April 22. The names of all entries must be in the hands of the Interscholastic committee by May 4.



## Original Oratory

Winner for 1952: Bill Huber, St. Leo's, Lewistown.

All communications concerning oratory should be addressed to Ralph Y. McGinnis, Montana State University, Missoula, Montana.

### Provisions for Oratory Tournament

1. Orations must be written originally by the students delivering them. The maximum time limit is 10 minutes. Sectioning and speaking order will be determined by lot.

2. The tournaments will begin Friday, May 15, at 8 a.m. Contestants and coaches will meet in Room 102 of the Library for instructions. Contestants will take part in two preliminary rounds; the winners, not exceeding six, from the preliminary rounds will speak in the semi-finals. Two finalists will be chosen to speak in the final program.

3. Names of all orators must be listed on the entry blank which will be sent to school principals on or about April 22. The names of all entries must be in the hands of the Inter-scholastic committee by May 4.

4. For further rules concerning oratory, see the by-laws for oratory of the Montana High School Speech League Constitution.

## Little Theatre Festival

Winners in 1952:

### Plays in Simpkins Little Theatre:

Best Actor—Jack Noble, Ronan high school

Best Actress—Carol Beardmore, Missoula County high school

Best Character Actor—John Forte, Ronan high school

Best Character Actress—Shirley Dennison, Shelby high school

Best Bit Actor—Don Byrd, Fort Benton high school

Best Bit Actress—Lauretta Marcusson, Fort Benton high school

### Plays in Student Union Theatre:

Best Actor—Theron DeJarnett, Billings high school

Best Actress—Dianne Stephens, Billings high school

Best Character Actor—Arthur Post, Gallatin County high school

Best Character Actress—(tie) Elizabeth Jordan, Gallatin County high school, and Bobbi Ness, Billings high school

Best Bit Actor—Emery Wetzel, Billings high school

Best Bit Actress—Barbara Mellot, Hamilton high school

#### Most Promising Awards:

Actor—James Larson, Shelby high school

Actress—Betty Ann Johnson, Great Falls Central Catholic high school

Character Actor—Gary Carson, Beaverhead County high school, Dillon

Character Actress—Sylvia Gray, Ronan high school

Bit Actor—Ronnie Duncan, Billings high school

Bit Actress—Shelia Sullivan, Butte Girls' Central high school

The non-competitive festival form of participation will be used in the Little Theatre again this year.

One-act plays or cuttings from longer plays, neither exceeding 35 minutes in playing time nor being less than 20 minutes and involving not more than one set of scenery, may be entered.

Adjudicators will comment on all Festival entrants. The evening program will consist of four plays selected by the adjudicators for imagination, excellence of acting, and quality of production. Since half the entrants will play in Simpkins Little Theatre and half play in the Student Union Theatre with an adjudicator in each theatre, identical medals will be awarded among each group of entrants as follows:

Best actor, best actress, best character actor, best character actress, best bit actor and best bit actress.

In addition, the literature section of the Missoula Woman's Club will give the following awards to entrants of schools appearing in the morning and afternoon and not appearing in the evening program: a medal for the most promising actor, most promising actress, most promising character actor, most promising character actress, most promising bit actor, most promising bit actress.

All communications concerning the Little Theatre Festival should be addressed to David W. Weiss, Montana State University, Missoula, Montana.

## Prizes and Awards

### Track and Field

1. The Missoula Mercantile presents two cups, one to be awarded to the winner in Class A and one to the winner in Class B. These cups are awarded each year to the winners of the track and field meet, to be held for one year. They will be

awarded permanently in 1958 to the school which shall have won the greatest number of points in five meets.

2. The Kiwanis cup, given by the Kiwanis club of Missoula, is awarded each year to the team breaking or equaling the largest number of records in the track and field meet. The cup is to be held for one year but will be awarded permanently in 1958 to the team which shall have broken or equalled the largest number of records in five meets.

3. A Rotary cup, given by the Rotary club of Missoula, is awarded permanently to the winning team in each division.

4. The Lions Cup, presented by the Lions club of Missoula, is awarded in the Class A division, **but competition for it is limited to Class A schools which do not play a Class AA football schedule.** It is awarded to the school in this group scoring the highest number of points in the meet.

5. Two University Relay plaques, given by the University, will be presented to the schools winning the relay races.

6. The University gives gold, silver and bronze medals, suitably engraved, and blue and red ribbons for winners of first, second, third, fourth and fifth places in all track and field events for both A and B schools—a total of 140 prizes for the 14 athletic events.

7. The University will also give an individual prize to the contestant winning the greatest number of points in each division.

#### Golf and Tennis

8. In the boys' golf tournament, gold, silver, and bronze medals will be awarded to the winners of first, second and third places, respectively. In the girls' golf tournament, a gold medal will be awarded to the winner. In both the boys' and girls' tennis tournaments, three gold medals and three silver medals will be awarded, one to each winner and each runner-up in the singles and doubles contests.

#### Declamation and Little Theatre

9. Gold and silver medals are awarded for places in the various divisions of declamation: in debate, original oratory, and extemporaneous speaking. Medals are also awarded in the several categories of judging in the Little Theatre Festival.

#### Journalism

10. Six trophies will be awarded by Sigma Delta Chi, men's professional journalism fraternity. Three large, traveling trophies awarded to schools submitting the best editorials, sports stories, and news features. A school winning one of these three times will gain permanent possession. Three smaller trophies will be awarded permanently each year to the writers in the three categories.



# MONTANA STATE UNIVERSITY CAMPUS

MISSOULA

MONTANA



The University, in a period of major growth, provides facilities equal to any in the nation for young men and women of Montana, taking their college training here in coming years.

(Red arrows above indicate campus growth)

1. Field House Site
2. New Music Building
3. New Women's Center
4. New Liberal Arts Hall
5. New Men's Residence Hall

HEADQUARTERS FOR 47th INTERSCOLASTIC:  
Student Union (circled in red)

For information, Phone 9-2331, or visit University Hall at  
head of Campus Oval.