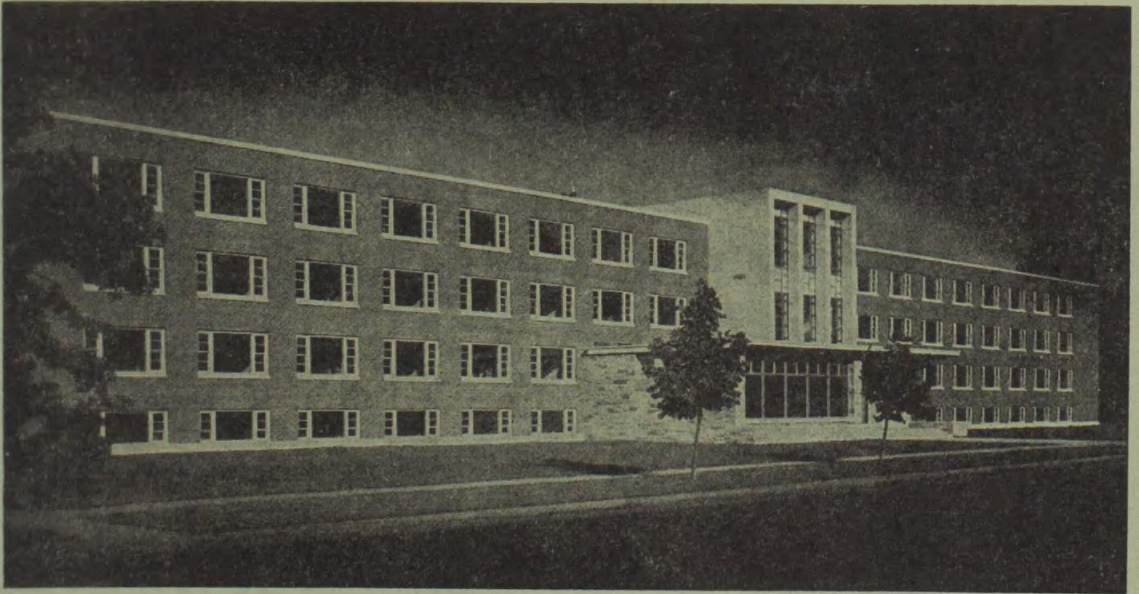


50th

# INTERSCHOLASTIC

*The Climax of the High School Year*



**FRIDAY AND SATURDAY**

**MAY 18-19, 1956**

**MONTANA STATE UNIVERSITY**



# The Interscholastic Committee

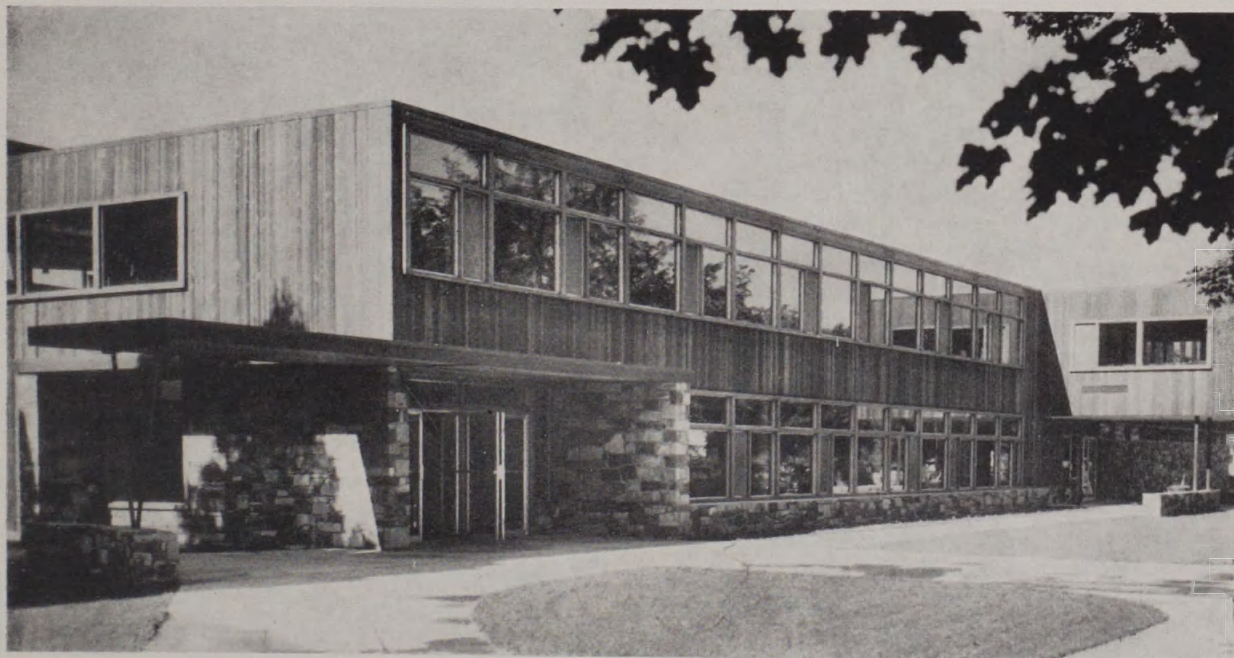
C. F. HERTLER, General Chairman

Edward S. Chinske .....	Manager of Athletics
Earl C. Lory and R. A. Diettert .....	Entry Blanks
Junior Chamber of Commerce .....	Ticket Sales
John F. Staehle and Fred A. Henningsen .....	Transportation
Andrew C. Cogswell .....	Entertainment of Men, Counselor
Harriet Miller .....	Entertainment of Women
Evelyn Seedorf .....	Declamation
Ralph Y. McGinnis .....	Debate, Original Oratory, and Extemporaneous Speaking
Ross L. Miller and Murdo A. Campbell .....	Publicity and Program
LeRoy W. Hinze .....	Little Theatre
Richard L. Disney, Jr. ....	Editorial Association
Aden F. Arnold .....	Art
Vince V. Wilson .....	Tennis
John L. Lester .....	Golf
J. W. Howard .....	Consultant
Meyer Chessin and John L. Wailes .....	Gatekeepers
T. G. Swearingen .....	Head Scorer and Physical Equipment
Bill Adams, Margaret Hammer, Patsy Anderson .....	Student Members

**FRONT COVER:** Craig Hall, Montana State University's men's dormitory.



# Interscholastic Headquarters



The Lodge

## General Information

The Montana Interscholastic offers competition to Montana high school youths in track, golf and tennis (boys' and girls), debate, original oratory, extemporaneous speaking, declamation, dramatics and art. It also offers semi-competition for high school newspapers through the critical service of the Montana Interscholastic Editorial Association, sponsored by the Montana State University School of Journalism.

All student contact, however, is not competitive. In dramatics, for example, the non-competitive Little Theatre Festival gives festival entrants an opportunity to receive careful evaluation and detailed comment on their dramatic efforts. The Interscholastic Editorial Association meeting is non-competitive. Its great value lies in the three-day contact of students having common problems.

Members of the Interscholastic Committee encourage competition when it tends to give the greatest value to participants; they discourage it where it tends to overshadow the returns to individual students.

## General Rules

1. A contestant may take part in as many different divisions of Interscholastic as he wishes. However, he should study the program carefully to be sure he will not encounter conflicts in time. The committee cannot adjust the Interscholastic program to fit the time of any one contestant. If, due to a conflict, he is not present when an event is called, he will give up his right to participate in that event.

2. All contestants will be expected to participate in the events for which they have been trained and in which they have been entered. No expenses will be paid for a contestant who does not take part in at least one event.

3. For specific rules governing track, tennis, golf, debate, original oratory, declamation, art and the editorial association look under those headings elsewhere in this pamphlet.



## Expenses

By pro-rating the net earnings of Interscholastic among the various schools entered, the committee has in the past been able to refund the transportation costs of two contestants from each school entered. The committee cannot guarantee these expenses, but since the institution of the pro-rating plan, refunds have been 100 per cent.

Transportation refunds are based upon round-trip fares on the shortest bus route to Missoula for two contestants from each fully accredited high school entered in track, declamation, debate or Little Theatre. Costs of meals, sleepers, or hotel accommodations used en route, are not included in the refunds.

The committee will not pay for contestants' and chaperons' meals, nor for the transportation of chaperons and coaches.

In order to secure refunds, principals and coaches must consult Professor John F. Staehle at the Field House Saturday from 9 a.m. to 12 noon. Failure to do so may delay refunds for a considerable time.

## Entry Blanks

An official entry blank will be sent out to all schools about April 23. This should be filled out at once and returned to C. F. Hertler, chairman, Interscholastic Committee, Montana State University, Missoula, Montana.

Names of all contestants in golf, tennis, journalism, debate, original oratory, and art must be submitted on the official entry blanks, and be in the hands of the committee by May 2. Later entries cannot be accepted. To insure prompt delivery, the entries should be sent by registered mail.

It is extremely important that schools indicate at the proper place on the blanks, when and how their contestants will arrive. Members of the University's two sophomore service organizations, Bear Paw and Spur, will meet all incoming trains. All teams and participants should report immediately upon ar-

rival to the Interscholastic Headquarters in the Lodge on the campus. Here quarters will be assigned and contestant badges issued.

All correspondence relative to the meet in general should be addressed to C. F. Hertler, chairman, Interscholastic Committee. Letters or telegrams requesting specific information may be addressed to committee members having charge of specific events. For a list of these names, see the inside front cover.

## Housing and Chaperons

The Interscholastic committee will arrange for, but not pay for, housing of all contestants and chaperons. Girl contestants and their chaperons will be housed in the University accommodations, if possible, or in private homes. Boy contestants will be housed in hotels, motels, etc. **Principals, chaperons and coaches must assume responsibility for the deportment of their charges.** Should hotels prove damages caused by contestants, or report failure to pay obligations incurred, the committee will withhold payment of travel expenses or disqualify the offending school from participation in future Interscholastic meets.

If two or more schools plan to place their contestants under the supervision of the same coach or chaperon, they must notify the committee not later than the last day set for receipt of entry blanks. Otherwise it may be impossible to secure lodging for contestants in the same place selected for coaches or chaperons.

Because the committee feels that no school should send contestants to Interscholastic without competent chaperons, it reserves the right to refuse lodging to unaccompanied contestants. The committee insists that coaches and chaperons stay with their charges, except during actual competition.

Contestants badges and lodging assignment will be given to all coaches and chaperons. Application for these should be made at the Interscholastic headquarters in the Lodge. The badges will admit their holders to all Interscholastic events.

# PROGRAM OF THE MEET

## FRIDAY, MAY 18

- 8:00 a.m., **Boys' Golf.** All contestants meet in front of the Lodge for transportation to Missoula Country Club course.
- 8:00 a.m., **Boys' Tennis.** All participants report to Men's gymnasium.
- 8:00 a.m., **Extemporaneous Speaking.** Drawings for topics in Liberal Arts Lounge.
- 8:00 a.m., **Original Oratory, Round I.** Assignments in Liberal Arts Lounge.
- 8:00 a.m., **Declamation.** Meeting of all contestants, Liberal Arts Room 104. Round I will follow this meeting.
- 8:30 a.m., **Boys' Tennis,** (singles and doubles) University courts.
- 8:30 a.m., **Girls' Tennis.** All participants report to Women's Center.
- 9:00 a.m., **Art—Arts and Crafts Building** (Old Student Union).
- 9:00 a.m., Meeting of athletic representatives of all schools at Men's Gym.
- 9:00 a.m., to 7:00 p.m., **Girls' Tennis** (singles and doubles) University courts.
- 9:00 a.m., **Girls' Golf.** All contestants meet in front of the Lodge for transportation to Missoula Country Club course.
- 9:00 a.m., **Original Oratory, Round II.**
- 9:00 a.m., **Extemporaneous Speaking, Round I.**
- 9:00 a.m., **Interscholastic Editorial Association.** Journalism building.
- 10:00 a.m., **Debate, Round I.** Assignments in Liberal Arts Lounge.
- 10:00 a.m., **Declamation, Round II.**
- 11:00 a.m., **Original Oratory, Round III** (semi-finals).
- 1:00 p.m., **Debate, Round II.**
- 1:10 p.m., **Track and Field Meet,** (parade of athletes) Dornblaser field (see program of events, page 11).
- 2:00 p.m., **Extemporaneous Speaking,** Drawing for topics, Liberal Arts Lounge.
- 2:00 p.m., **Declamation, Round III.**
- 3:00 p.m., **Extemporaneous Speaking, Round II.**
- 4:00 p.m., **Debate, Round III.**
- 7:15 p.m., **Singing on the Steps,** University Hall.

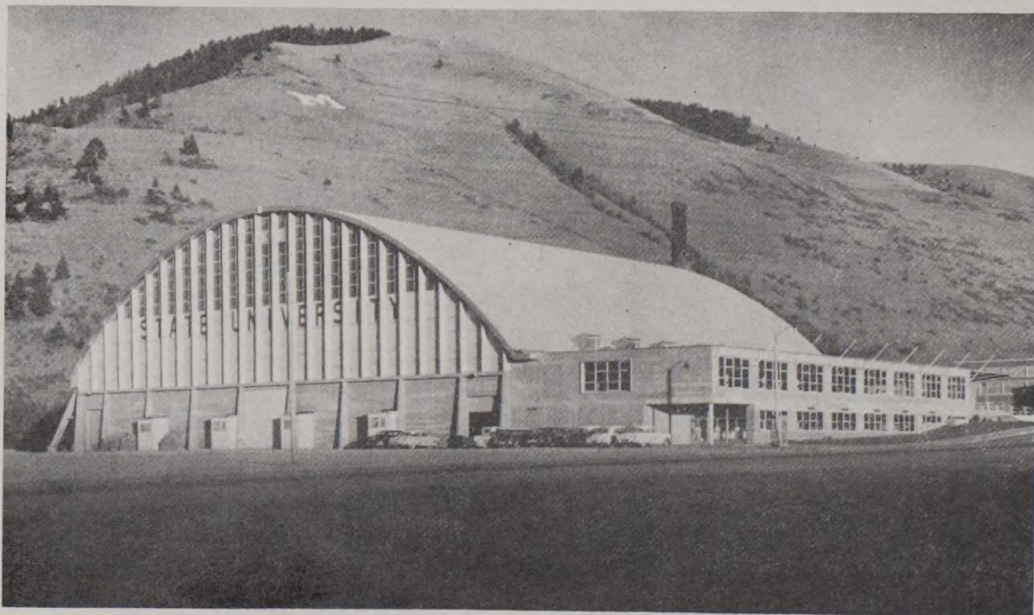
- 8:00 p.m., **Declamation and Original Oratory, Finals.** Student Union Auditorium.

## SATURDAY, MAY 19

- 8:00 a.m., **Boys' Golf Tournament.** All contestants meet in front of the Lodge for transportation to Missoula Country Club course.
- 8:00 a.m., **Boys' Tennis.** All participants report to Men's gymnasium.
- 8:00 a.m., **Debate, Round IV.**
- 8:00 a.m., **Girls' Tennis.** All contestants report to Women's Center.
- 8:30 a.m. to 7:00 p.m., **Boys' Tennis** (singles and doubles) University courts.
- 8:30 a.m., **Little Theatre Festival.** Simpkins Little Theatre and Student Union Theatre.
- 9:00 a.m. to 12 noon, **Travel Refunds.** Principals and coaches confer with Professor Staehle, Field House.
- 9:00 a.m. to 7:00 p.m., **Girls' Tennis,** (singles and doubles) University courts.
- 9:00 a.m., **Girls' Golf.** All contestants meet in front of the Lodge for transportation to Missoula Country Club course.
- 9:00 a.m., **Extemporaneous Speaking,** Drawing for topics. Liberal Arts Lounge.
- 10:00 a.m., **Extemporaneous Speaking, Round III.**
- 10:30 a.m., **Debate, Round V** (quarter finals).
- 12:00 noon, **Luncheon** meeting of teachers of English, Drama and Speech.
- 1:15 p.m., **Track and Field Meet, finals.**
- 1:30 p.m., **Debate, semi-finals.**
- 1:30 p.m., **Little Theatre Festival,** Simpkins Little Theatre and Student Union Theatre.
- 2:00 p.m., **Extemporaneous Speaking,** Drawing for topics. Liberal Arts Lounge.
- 3:00 p.m., **Extemporaneous Speaking, finals.** Liberal Arts, 104.
- 4:30 p.m., **Debate, finals.** Liberal Arts 104.
- 8:15 p.m., **Little Theatre Festival and** awarding of prizes, Student Union Theatre.



## University Field House

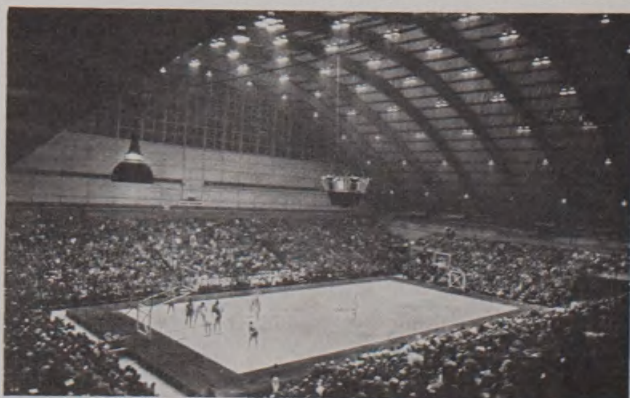


Montana State University's super structure, the Auditorium-Athletic Field House was formally opened on December 18, 1953, when the Grizzlies played host to the Indiana Hoosiers in a basketball game played before some 6500 fans. This date was two years from the time the bill enabling the construction of the building was first introduced to the state legislature.

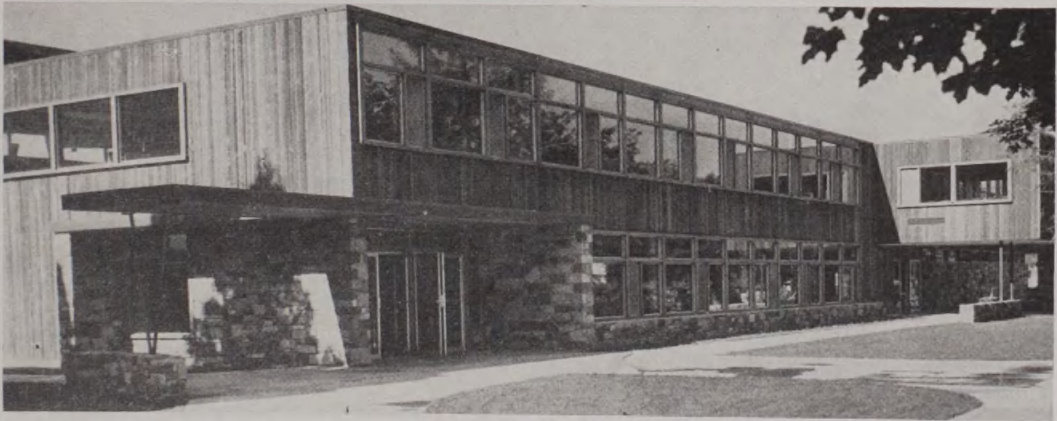
Since the opening of the Million Dollar plant it has housed horse shows, water and auto shows, commencement exercises, big name bands, and community concerts besides the basketball contests. Like the other new buildings on the campus, the Field House is designed and constructed so that it may be expanded as future needs require.

Besides the large arena used for the various shows and contests the mezzanine area is taken up by offices. The Athletic Department offices and Maintenance Department are now housed on the mezzanine and the Century Club lounge is another added feature of this area.

This fall marked another first for the Field House as Grizzly football players used the locker and equipment rooms that were provided for in the original plans.







## **THE LODGE**

### **MSU Combination Food Service—Student Union Building**

Retaining the atmosphere of a picturesque Swiss chalet, Montana State University's Lodge combines the facilities of a modern cafeteria and a student lounge.

The \$565,000 structure, named the Lodge by students, was formally dedicated on the 62nd anniversary of the granting of the University charter in 1893. This building, which was built and will be operated on a self-financing basis, without tax money, houses dining and recreation facilities for the students.

The kitchen is located on the ground level, and serves both the upstairs dining room and cafeteria on the lower floor. Called the "Kitchen with a Future" by its designer, Dr. Lendal H. Kotschevar, director of food services and residence halls, it is designed for further expansion along with the building when increased enrollments make larger facilities necessary.

The second floor of the building houses student offices and meeting rooms along with a place for on-campus dinner dances and similar social functions. A patio for outdoor dining and a lounge with recreation facilities are other features of the structure.

The pleasant, friendly atmosphere of the Lodge makes college days more enjoyable for students at Montana State University as well as providing an efficient dining service.



## Points in Track and Field Meet, 1955

Class AA			
Missoula	97	Valier	10
Butte Public	42 1/2	Simms	9
Helena	30	Beaverhead County	8 1/2
Great Falls	27 1/2	Hot Springs	7 1/2
Billings	14	Columbus	7
Flathead County	13	Conrad	7
		Ronan	6 1/2
		Hamilton	6
		Twin Bridges	6
		Whitefish	6
		Cascade	5
		Fairfield	5
		Wolf Point	5
		Fort Benton	4 1/2
		Troy	4
		Anaconda Central	4
		Corvallis	4
		Colstrip	4
		White Sulphur Springs	3 1/2
		Augusta	3
		Hardin	3
		Thompson Falls	3
		Three Forks	3
		Big Sandy	2
		Loyola	2
		Lincoln County	2
		Malta	2
		St. Regis	1
		Columbia Falls	1
Class A			
Custer County	47 2/3		
Havre	33 1/2		
Park County	32 1/2		
Dawson County	32 1/2		
Gallatin County	30 1/2		
Butte Central	28 5/6		
Anaconda	14		
Fergus County	2 1/2		
Sidney	2		
Class B			
Polson	28 1/2		
Florence Carlton	23		
Powell County	18 1/2		
Plains	16 1/2		
Stevensville	12		
Libby	12		
Shelby	11		

## Montana Interscholastic Track and Field Records

Interscholastic meet records are the best marks established in any event in the meet regardless of whether established by Class AA, A, B, or C school contestants.

Event	Record	Holder
100-yard dash	9.8 sec.	R. O'Malley, Butte, 1933
220-yard dash	21.6 sec.	R. O'Malley, Butte, 1933
440-yard dash	50.2 sec.	R. Strutz, Billings, 1951
880-yard run	1:58:8	B. Rife, Custer County, 1949
Mile run	4:27.6	J. Kittell, Missoula, 1945
High hurdles	14.8 sec.	Don McAuliffe, Butte, 1948
180-yard low hurdles	19.6 sec.	C. Orr, Missoula, 1953
Pole vault	12 ft. 10 in.	W. Custer, Missoula, 1930
Javelin throw	197 ft. 5 in.	R. Gustafson, Corvallis, 1938
Shot put	52 ft. 8 1/2 in.	L. Perry, Great Falls, 1948
Discus throw	162 ft. 8 1/2 in.	J. Roban, Great Falls, 1953
High jump	6 ft. 3 1/4 in.	M. Grimes, Helena, 1951
Broad jump	22 ft. 8 1/8 in.	K. Nelson, Missoula, 1955
Half Mile Relay	1min. 32.1 sec.	(D. and R. Halverson, J. Haslip, J. Griffith) Helena, 1951

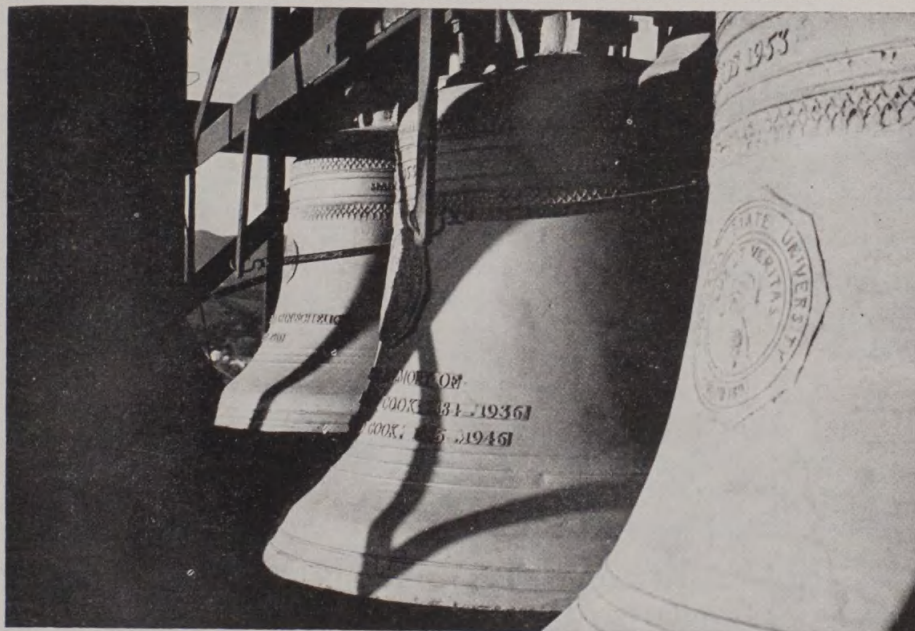


"Your Friendly Ford Dealer  
for Over 40 Years"

**H. O. BELL CO.**

605 S. Higgins Ave.

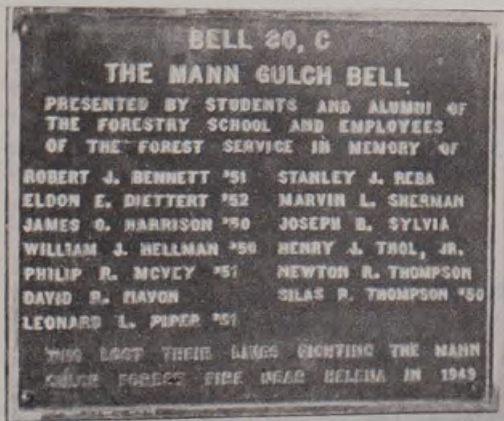
**"For  
Whom  
the  
Bells  
Toll"**



### **Memorial Carillon**

The forty-seven bronze bells and equipment in Main Hall tower, gifts of friends of the University through its endowment foundation, were specially cast in the Netherlands and dedicated at Montana State University on October 18, 1953.

The Memorial Carillon is dedicated to former students killed in service to their country. All bells were presented as memorials by individuals and groups through the Foundation. Memorial plaques, identifying the donor and to whom each bell is dedicated, are located on the walls of the entrance-way to Main Hall where the sides of the tower enclose the steps to the main entrance.



Beneath the bellroom is the clavier, from which the nine ton instrument is played manually over a range of four octaves. Programs are prepared on a separate practice clavier. Hours and half hours are sounded mechanically on the largest bell, which sounds the lowest note of the carillon and weighs more than 2,000 pounds.

Montana's  
Oldest Bank

**FIRST NATIONAL BANK**

of  
Missoula



# Rules Governing Track and Field Events

1. Except for the method of scoring, the order of events and other exceptions noted in the following paragraphs, rules of the National Interscholastic Federation will govern all track and field events.

2. All students certified to take part in this meet must be eligible in accordance with the rules of eligibility adopted by the Montana High School Association.

3. The 1956 meet will be run off in AA, A, B and C divisions.

4. Participation in track and field events shall be limited to the first five (5) place winners in each event from each of the fourteen divisions as established for track competition by the Montana High School Association. Exceptions within the ruling of the Association may be accepted. All entries must be certified by each divisional meet manager and submitted on forms provided to the manager of the Interscholastic meet, Mr. Chinske, on or before Monday, May 14th. Entries received after that date will not be accepted. Responsibility rests with the divisional meet manager to submit entries before the deadline.

5. Representatives of competing schools will meet in the University Gymnasium at 9:00 a.m., Friday, May 18th to assign and draw heats and lanes for contestants in running events and to make necessary scratches. Edward S. Chinske, the track meet manager,

will represent any school whose coach cannot be present.

6. Coaches, trainers, attendants and entries who have been scratched will not be allowed on the field during the meet. Contestants competing in Friday's events must be in uniform and must be wearing their contestant's number in order to gain admittance to the field. Only those contestants who are actually competing in the finals on Saturday will be allowed on the field. Relay runners who have not qualified in the other events of Saturday's program will be admitted only when it is time for them to warm up for that event. A section of the stadium will be reserved for contestants.

7. In determining scores for the awarding of prizes in track and field events, the first place shall count 6 points; second place, 4 points; third place, 3 points; fourth place, 2 points; fifth place, 1 point. One fourth of the points scored by each team placing in the relay will be credited to each member of that relay team, in determining individual high point winners. Should the referee declare a tie for any place in any event the point or points scored shall be divided.

8. All contestants must wear jerseys and numbers must be pinned on the back of their jerseys.

9. Any contestant not reporting to the starting official at the last call for any event shall be scratched for the event.



# Program of Track and Field Events

Unless specifically indicated otherwise in the program, preliminary races shall be run in the following order: Class AA, A, B and C. Where no more than ten contestants from any class are entered in a running event, no trials or preliminary heats shall be run.

## FRIDAY, MAY 18, 1:10 P.M.

Parade of Athletes

Trials, 100-yard dash

Trials, 120-yard high hurdles

Trials, 440-yard run

Final, Mile Run—Classes B and C

Trials, 220-yard dash

Final, 880-yard run—Classes AA and A

Trials, 180-yard low hurdles

Trials, 880-yard relays—Classes B and C

Finals in the Class B and Class C pole vault and in the Class AA and Class A high jump will be held concurrently with the running events.

Trials in the following field events will be held with participants competing in flights. Class B and Class C discus throw (on practice field north of Dornblaser Field). Class AA and Class A shotput, Class B and Class C javelin throw and Class AA and Class A broadjump (all on Dornblaser field), followed by Class B and Class C shotput, Class AA and Class A javelin throw, Class B and Class C broadjump (all on Dornblaser Field), and Class AA and Class A discus throw (on practice field north of Dornblaser field).

## SATURDAY, MAY 19, 1956

Finals, 100-yard dash

Finals, 120-yard high hurdles

Final, 880-yard run, Class B

Final, 880-yard run, Class C

Finals, 440-yard run

Final, Mile run, Class AA

Final, Mile run, Class A

Finals, 220-yard dash

Finals, 180-yard low hurdles

Finals, 880-yard relays. (all relays will be run in lanes with staggered starts and on comparative time basis if there are more than five teams in any class).

Finals of the Class AA and Class A pole vault and Class B and Class C high jump will be held concurrently with the running events.

Finals of the weight throwing events and the broad-jump will be as follows: Class AA broad jump, Class A shot put, and Class B and Class C discus throw; followed by Class AA shot put, Class A discus throw, and Class B and Class C broad jump; followed by Class AA discus throw, Class A broad jump, and Class B and Class C shot put; followed in order by the Class B and Class C, Class A, and Class AA javelin throw.

The Committee reserves the right to qualify more contestants than the above calls for, and to eliminate any semi-final found to be unnecessary.

All 440, 880 and mile races will be started at the head of the straightaway (thus eliminating the first turn.)



Air  
Conditioned

## HOTEL FLORENCE

Fire  
Proof



### MSU School of Journalism

The Journalism building on the campus was dedicated in 1937 but only after 23 years of hoping and planning did the "school without a home" finally find a home. The School of Journalism was founded in 1914 by the late Dean Emeritus A. L. Stone and was housed in tents in front of the old Women's Gym. Later the school was moved to various shacks on the campus and finally in 1937 their new home was built.

The highly accredited Journalism school's curriculum is divided into three phases. Students may specialize in radio, news-editorial, or advertising. Many facilities are available in the building for each of the three phases.

The ground floor is devoted to the University press where school publications are printed. Photography and typography rooms occupy the rest of the floor. News-editorial rooms where the school paper, The Montana Kaimin, is written occupies the second floor with the library and offices. The third floor is occupied by class rooms, auditorium and offices.

The school was fully accredited by the American Council on Education for Journalism in 1948.



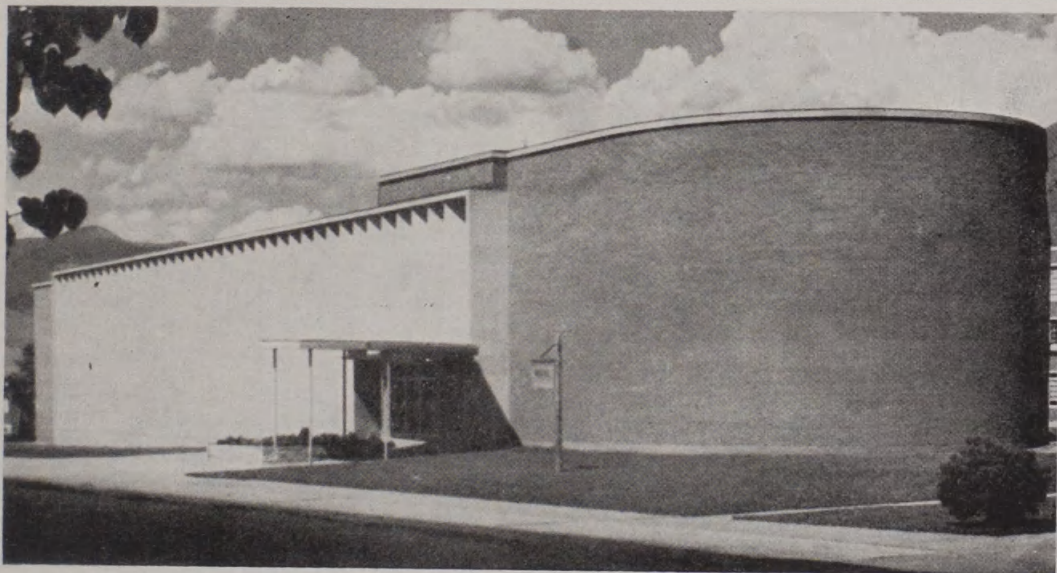
Wholesale  
MEATS

**JOHN R. DAILY, Inc.**

117 W. Front  
Phone 3-3416



## Ultra-Modern Music Building



Montana State University's \$700,000 School of Music building is of the most advanced design of its kind in the nation. The structure, resembling a baby grand piano, is engineered throughout for effective teaching conditions and facilities.

Music school activities center in three distinct sections of the building: teaching studios and practice rooms in the north wing; classrooms, music library and offices along the front portion; instrumental and choral laboratories and the recital hall in the south wing.

The unusual front of the building results from a primary factor in the design—the control of sound. Solid windows of glass block were selected to provide adequate natural light and yet keep transmission of sound to a minimum. The two-story fixed stone louvers admit adequate light but block off direct rays of the sun and reduce the air conditioning system load.

The MSU School of Music is sponsoring a Music Series of recitals and chamber music this year as a public service project. Featured in the series are such artists as Carl Weinrich, organist on January 17; the Griller String Quartet plays February 15; MSU Trio with Justin Gray, clarinetist on March 27; The Cassenti Players, wood-wind performers, playing April 17; and A Singer of Distinction, a young artist to appear at a date to be announced.



## THE MONTANA POWER CO.



# Golf and Tennis Tournament

**Winner in Girls' Golf Tournament for 1955:** Sonya Hoiness, Billings Senior.

**Winner in Boys' Golf Tournament for 1955:** E. Zamljak, Butte Public.

**Winners in Girls' Tennis Tournament for 1955:** Singles—Judy Flightner, Missoula County. Doubles—Gloria Foltz and Judy McKellop, Hamilton.

**Winners in Boys' Tennis Tournament for 1955:** Singles—Don Hubbard, Dawson County. Doubles—No boys' doubles played because of adverse weather.

## RULES GOVERNING TENNIS AND GOLF

(See General Rules, page 3)

Coaches may submit as many names as they wish on the entry blank, but no more than two from any one school may compete in the girls' golf tournament, and the boys' golf tournament. No more than two may compete in the girls' tennis singles and the boys' tennis singles. In tennis doubles, one boys' team and one girls' team from each school may be entered. Contestants entered in the tennis singles may also enter in the doubles.

Tournaments are arranged for both boys and girls. Entries must be sent on the regular entry blanks. (See "Entry Blanks," page 4.) The committee will pay no expenses of the entrants in these tournaments.

**Golf.** Boys' tournament. A 36-hole medal-play tournament, 18 holes on Friday morning and 18 holes on Saturday morning, starting at 8 a.m. on the Missoula Country Club golf course. See program of meet, page 5.

Girls' Tournament. An 18-hole medal-play tournament, 9 holes on Friday morning and 9 holes on Saturday morning, starting at 9:00 a.m. at Missoula Country Club golf course.

**Tennis.** Boys' tournament. Singles and doubles Friday, 8 a.m. to 7 p.m. and Saturday, 8 a.m. to 7 p.m. Men's gymnasium and University courts.

Girls' tournaments. Singles and doubles. Friday 8:30 a.m. to 7 p.m. and Saturday, 8 a.m. to 7 p.m. Women's gymnasium and University courts.

There will be one single elimination tournament in doubles for the boys and one for the girls.

Awards will be given to first, second, and third place winners in boys' golf; first and second place winners in girls' golf; and first and second place winners in both boys' and girls' tennis.



# Interscholastic Editorial Association

## ALL-STATE RATINGS FOR 1955:

**Arrow**, Flathead County high school; **Konah**, Missoula County high school, Missoula; **Kyote**, Billings; **Nugget**, Helena; **Laurel Leaves**, Laurel; **Rim Rocket**, Central Catholic high school, Billings; **Signal Butte**, Custer County high school, Miles City; **Cone-let**, Sacred Heart Academy, Missoula; **Gold Dust**, Havre Central high school, Havre; **Pow Wow**, Ronan; **Bda Wauka**, Medicine Lake; **Broadcaster**, St. Ignatius; **Evergreen**, Lincoln County high school, Eureka; **Growl**, Choteau; **Headwaters**, Three Forks; **Llano**, Plains; **Panther**, Valier; **Projector**, Huntley Project, Worden; **Skyline**, Charlo; **Bear Paw**, Box Elder; **Black and White**, Winnett; **Bluffs**, Park City; **Broad Views**, Broadview; **Bulldog**, Bainville; **Edgar Wildcat**, Edgar; **Jolitana**, Joliet; **Ketochi**, Cascade; **Klein Hi Messenger**, Klein; **Rich-onia**, Richey; **Rimrock Echo**, Lavina; **Senior Sentinel**, Fromberg; **Static**, Ennis; **Pony Express**, Paris Gibson Junior high school, Great Falls.

Six trophies will be awarded by Sigma Delta Chi, men's professional journalism fraternity. Three of these are large, traveling trophies which will be awarded to the schools submitting the best editorials to be judged, the best sports stories, and the best news features. A school winning one of these trophies three times will gain permanent possession. Three smaller trophies will be awarded permanently each year to the writers in the three categories.

The Montana Interscholastic Editorial Association will meet in the Journalism building at 9 a.m. Friday. Each member school is entitled to two voting delegates, each of whom will receive a contestant badge. Delegates, however, must be listed on the school's entry blank (See page 4).

Annual newspaper ratings will be announced at the close of the Friday morning

session. Awards in this contest will be made upon the basis of the following classification:

Class A — Printed publications from schools with enrollments of 500 or more.

Class B — Printed publications from schools with enrollments between 250 and 500.

Class C — Printed publications from schools with enrollments between 100 and 250.

Class D — Printed publications from schools with enrollments less than 100.

Class E — Duplicated papers from schools with enrollments of 75 or more.

Class F — Duplicated papers from schools with enrollments of less than 75.

Class G — Papers which are published as inserts or departments in community newspapers.

Papers in each class will be rated All-State, Superior, Excellent, Good, Fair, or no rating.

For further information write to Assistant Prof. Richard L. Disney, Jr., Montana State University, Missoula, Montana.

## Speech Events

**Sweepstakes Winner, 1955:** Billings Senior high school.

A trophy is awarded by the Montana High School Speech League to the school scoring the greatest number of points in all events.

## Declamation

**Finalists for 1955:** Oratorical, First—Byron Christian, Flathead County, Kalispell;

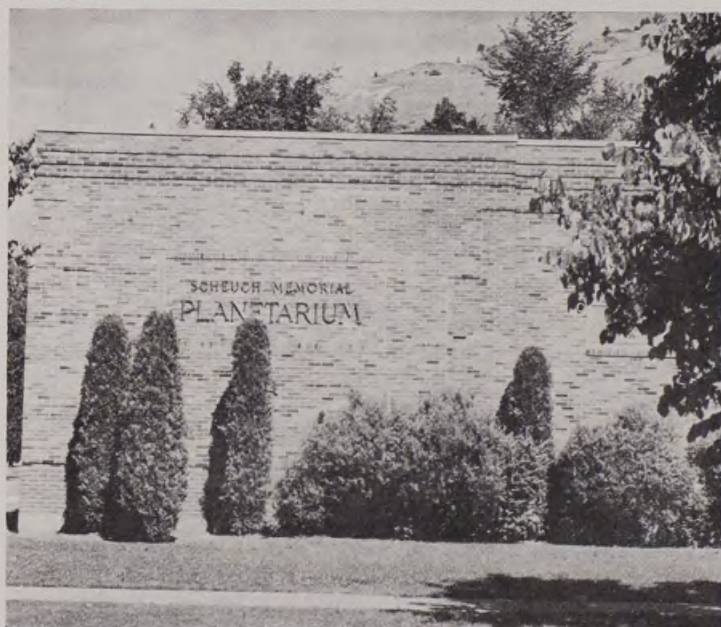
(Continued on page 17)



EVERYTHING  
MEN WEAR

*Dragstedt's*

ON CIRCLE  
SQUARE



## The Scheuch Memorial Planetarium

*In Remembrance  
of*

**"PROF"**

**FREDERICK C. SCHEUCH**

1871-1954

President Emeritus, MSU

*"Memories are among the dearest possessions one has. They cannot be bought or sold; they cannot be put away in a strong box, nor taxed, nor stolen. My memories cover some 41 years from the day this university opened until January 1936. When one is a part of an institution for so long, it enters into the fibers of one's being . . ."*

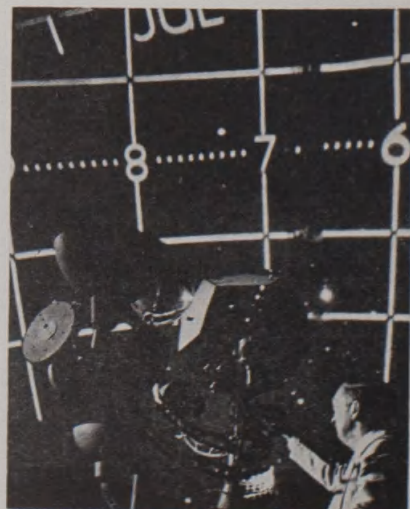
—Prof. Frederick C. Scheuch.

To the man who spoke those memorable words Montana's new Memorial Planetarium was dedicated June 5, during 1955 Commencement week. It was presented to the University by William M. Allen, MSU '22, President of Boeing Aircraft, Seattle, as chairman of the Scheuch Memorial Committee, and accepted by President Carl McFarland.

The planetarium was constructed and equipped to produce, indoors, the appearance of the sky on a cloudless night under any celestial circumstances. The illusion is obtained by means of a projector set in the center of its large room with a hemispherical ceiling. The projector is constructed so that the operator can portray the heavens at any latitude, for any time of night, for any date of the year.

The intricate apparatus is used under a dome 30 feet in diameter, and is operated by Dr. Harold Chatland, professor of mathematics and dean of the arts and sciences.

The planetarium serves many purposes. It is of great value in the teaching of all the physical sciences, and for the general student body and the public it is a great educational, cultural and recreational asset. Its doors are open continually to children who here learn the wonders of the heavens.



Medical  
Dental Bldg.

WESTERN MONTANA'S LARGEST LIFE INSURANCE AGENCY  
**NORTHWESTERN NATIONAL LIFE INSURANCE CO.**  
LIFE INSURANCE TAILORED TO SUIT YOUR NEED

Missoula  
Montana



(Continued from page 15)

Second—Chuck Padbury, Helena High School.

Dramatic, First—Bob Dahlstrom, Billings Senior High School; Second, Marilyn Streeter, Billings Senior High School.

Humorous, First—Judith Riddle, Libby High School; Second—Marilyn Dickson, Chinook High School.

### Rules Governing Declamatory Contest

(See General Rules, page 3)

1. While both boys and girls may participate, there will be no separate boys' and girls' contests. Instead, three different types of declamation may be presented: serious or dramatic declamation, humorous declamation, and oratorical declamation.

2. If a coach wishes to indicate the name of an alternate for his declaimers, he may do so on the regular entry blank sent by the Interscholastic committee to high school principals on or about April 20. Take care to specify that the student is an alternate and not a regular contestant. This is the only method by which an alternate will be admitted on the program. Also indicate clearly on blank whether contestant's presentation will be serious, humorous or oratorical.

3. Each school may enter a **maximum of three speakers**, distributing this number among the above categories in any way the principal or coach desires.

4. There will be preliminary, semi-final, and final contests. The first two rounds will include impromptu interpretation.

5. A general assembly of contestants, coaches, and judges will be held in Room 104 of the Liberal Arts Building, May 18, at 8 a.m., where instructions will be given and contestants sent to their different divisions. **All concerned should report promptly.**

6. Two speakers from each division will participate in the final contest Friday

evening, and to each of them a medal will be awarded. Semi-finalists will **receive ribbons.**

7. Declaimers are urged to choose selections of high literary value.

8. No selection may take longer than **eight minutes** to deliver; contestants exceeding this limit will not be considered in choosing winners.

9. Judges shall base their judgment on the speaker's ability to communicate what he has to say. Such communication will depend on the speaker's understanding and appreciation of the writing, intellectual and emotional, and his impartation of it to his hearers.

10. No declamation (oratorical, serious or humorous) which has been given in the finals of the year immediately preceding shall be permitted to be used in the finals of the declamation contest. For instance this year (1956) the following 1955 selections delivered by representative finalists are barred: "Dr. Faustus" and "Medea"; "Mr. Death and the Red Headed Woman," "Joint Owners in Spain," "Spartacus to the Gladiators," and "All This and Heaven Too."

11. For further information address Dr. Evelyn Seedorf, Montana State University, Missoula, Mont.

### Debate

**Winners for 1955:** Team, Havre High School; Best Individual Debater, Larry Pettit, Fergus County high school, Lewistown.

**Question for 1956:** "Resolved: That government subsidies should be granted according to need to high school graduates who qualify for additional training."

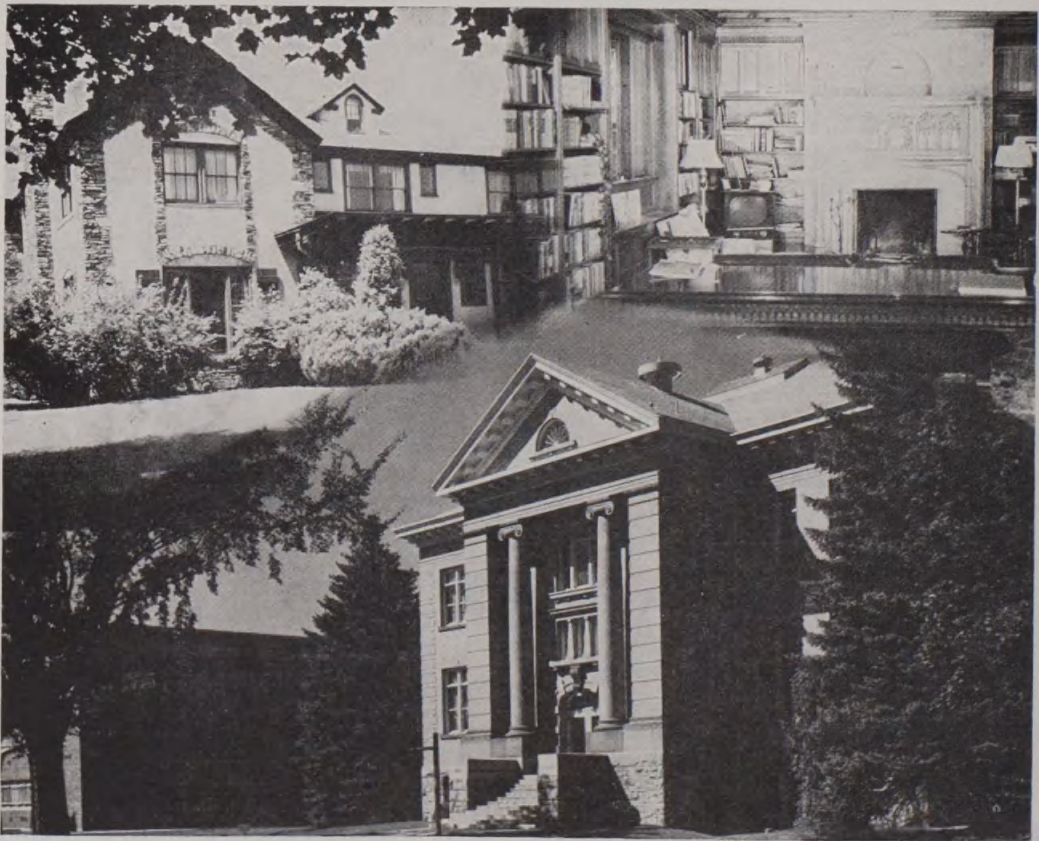
All communications concerning debate should be addressed to Ralph Y. McGinnis, director, Montana High School Speech League, Montana State University, Missoula, Montana.

#### Provisions for Debate Tournament

1. All high schools which are eligible to belong to the Montana High School Speech

(Continued on page 20)





**The New Law House**

**Law House Study**

### **MSU Law School**

It is the tradition of the common law that groups of scholars, student and practicing members of the legal profession, congregate as an integrated community. The Law House at MSU is thus more than a residence for law students or a club for students and practitioners. It is a legal center, a place of fusion for legal education and the experience of practitioners.

Dedication ceremonies for the Law House were held September 24 featuring the Hon. William D. Murray, Judge of U. S. District Court for Montana, as guest speaker. Thus the new Law House has now become an integrated part of the University's famous Law School.

Located four blocks from the campus at 1325 Gerald Avenue, the Law House provides lodging facilities for a limited number of students. Large rooms on the first floor serve for informal conferences and formal discussions among resident and non-resident members. In the library on the first floor there are in addition to working law books, volumes about the law which every aspiring lawyer should read.

The landscaped grounds of the Law House occupy nearly half a square block. The large, handsome masonry building was constructed in depression years at a cost of \$100,000 for the basic structure alone.

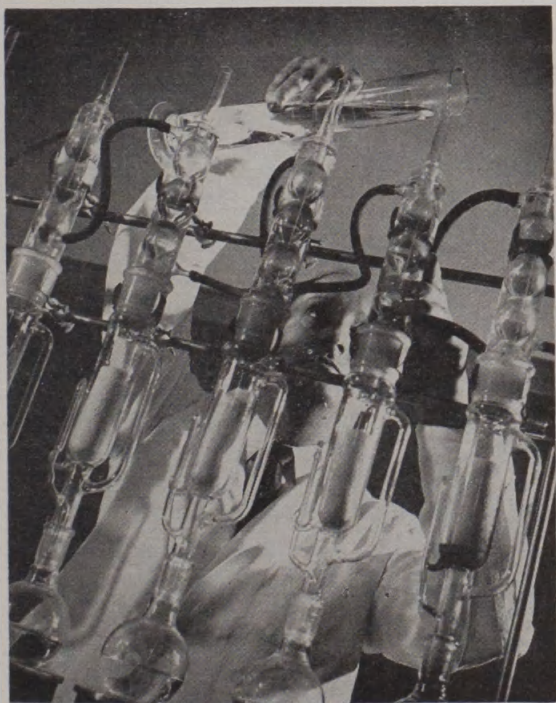


"Let Our Experience  
Safeguard Your Health"

**MISSOULA DRUG CO.**

**Prescription  
Specialists**

## SCHOOL OF PHARMACY



The School is fully accredited by the American Council of Pharmaceutical Education. It offers two specialized courses of instruction of the highest requirements of pharmaceutical instruction in America. These two curricula, "professional and scientific," provide a broad scientific education for both men and women and furnish the same cultural background as is offered by the usual arts and science curriculum.

The pharmacy physical plant is equipped with the latest in dispensary, research and experimental laboratories. A model drug store is also part of the plant where students fill prescriptions and are given experience in other practical drug store work.

The Chem-Pharmacy building on the University campus is the home of both the department of Chemistry and the School of Pharmacy. The third and fourth floors of the building are devoted to the chemistry department while the second floor is occupied by the School of Pharmacy. Both share the use of the ground floor of the structure.

Dean Jack E. Orr is the third permanent dean of the School of Pharmacy. Orr became dean in 1953. The School of Pharmacy originally was established as the department of pharmacy at the State College at Bozeman, in 1907. Later, in the year 1913, it was transferred to the University as the School of Pharmacy.



**"SKY HIGH  
QUALITY**

**STOP 'N' SHOP**

**AT DOWN TO  
EARTH PRICES!"**



(Continued from page 17)

League shall be eligible to participate in debate. Pairings of teams and determinations of sides shall be by lot.

2. The tournament will begin Friday at 10 a.m. Coaches of all teams will meet in Room 104 of Liberal Arts for the pairings. Three rounds will be held Friday with all teams debating. The state championship debate will be in Room 104, Liberal Arts building, at 4:30 p.m., Saturday.

3. All teams will debate four preliminary rounds. The eight highest ranking teams will enter the elimination rounds during which one defeat will eliminate a team from further competition.

4. Names of all debaters and coaches must be listed on the entry blank which will be sent to school principals on or about April 23. The names of all entries must be in the hands of the Interscholastic committee by May 2.

5. Subject to change by mutual agreement of participants and coaches, all debates shall be conducted in accordance with the plan provided for in the league constitution.

## Extemporaneous Speaking

**Winner for 1955:** Reese Johnson, Billings Senior high school.

All communications concerning extemporaneous speaking should be addressed to Ralph Y. McGinnis, Montana State University, Missoula, Montana.

### Provisions for the Extemporaneous Speaking Contest

1. One hour before speaking, the contestant will draw by lot three specific topics based on one of the following general subjects:
  - a. The 1956 U. S. National Election.
  - b. The United Nations in 1956.
  - c. The Crime Problem in the U. S. Today.

The specific speech topics will have been chosen from materials appearing in the January, February, March and April issues of Time, Scholastic, Readers Digest, and Newsweek magazines.

2. The contestant will then choose one of the three as the subject for his speech.
3. The contestant will have one hour for the preparation of his speech.
4. At the scheduled time for beginning the contest, the contestants will speak according to the speaking order determined by lot.
5. Maximum time limit for speaking will be 8 minutes. Minimum time limit will be 5 minutes.
6. The contest will begin Friday at 8 a.m. Drawings for topics will be in the Lounge of Liberal Arts Hall. Contestants will take part in three preliminary rounds. The highest ranking six will speak in the finals.
7. Names of all extemporaneous speakers and coaches must be listed on the entry blanks which will be sent to school principals on or about April 23.

## Original Oratory

**Winner for 1955:** Martha Cochrane, Billings Senior high school.

All communications concerning oratory should be addressed to Ralph Y. McGinnis, Montana State University, Missoula, Montana.

### Provisions for Oratory Tournament

1. Orations must be written originally by the students delivering them. The maximum time limit is 10 minutes with no minimum. Sectioning and speaking order will be determined by lot.
2. The tournaments will begin Friday at 8 a.m. Contestants and coaches will meet in the Lounge of Liberal Arts Hall for instructions. Contestants will take part in three preliminary rounds. Two finalists will be chosen to speak in the final program.
3. Names of all orators must be listed on the entry blank which will be sent to school principals on or about April 23.
4. For further rules concerning oratory, see the by-laws for oratory of the Montana High School Speech League Constitution.



# Little Theatre Festival

## WINNERS IN 1955:

### Plays in Simpkins Little Theatre:

**Best Actor:** Tom Landry, Helena High School

**Best Actress:** Betty Whelan, Butte Girls' Central

**Best Character Actor:** Tommy Hynes, Granite County High School

**Best Character Actress:** Kay Kennison, Darby High School

**Best Bit Actor:** Hal Jo Stearns, Harlowton High School

**Best Bit Actress:** Janet Kilzer, Sacred Heart Academy

### Plays in University Theatre:

**Best Actor:** Jay Agather, Libby High School

**Best Actress:** Ann Rotz, Libby High School

**Best Character Actor:** Stanley Underdahl, Shelby High School

**Best Character Actress:** Emily Rathman, Billings High School

**Best Bit Actor:** Fred Jackson, Billings High School

**Best Bit Actress:** Carla Molzhon, Wolf Point

### Plays in Missoula County High School Theatre:

**Best Actor:** John Gallus, Havre Central High School

**Best Actress:** Kay Gossack, Gallatin County High School

**Best Character Actor:** James Yeager, Havre Central High School

**Best Character Actress:** Gwen Ellis, Powell County High School

**Best Bit Actor:** David Anderson, Gallatin County High School

**Best Bit Actress:** Nancy Ibenthal, Gallatin County High School

---

The non-competitive festival form of participation will be used in the Little Theatre again this year.

One-act plays or cuttings from longer plays, neither exceeding 35 minutes in playing time nor being less than 20 minutes and involving not more than one set of scenery, may be entered.

Adjudicators will comment on all Festival entrants. The evening program will consist of three plays selected by the adjudicators for imagination, excellence of acting, and general quality of production. Since one-third of the entrants will play in Simpkins Little Theatre, one-third in the Student Union Theatre, and one-third in the Missoula County High School Theatre with an adjudicator in each theatre, identical medals will be awarded among each group of entrants as follows:

Best actor, best actress, best character actor, best character actress, best bit actor and best bit actress.

All communications concerning to LeRoy W. Hinze, Montana State University, Missoula, Montana.



# Art Competition

For the 1956 Interscholastic, work in the following classifications will be accepted in competition. In future years, other classifications may be added:

## 1. DRAWING

Work in which a single medium has been used such as: charcoal, pencil, ink, one color of crayon, chalk, etc.

## 2. PAINTING

Work in watercolor (either transparent or opaque, tempera is acceptable),

oil, pastel, colored crayons, or any generally used painting medium.

## 3. DESIGN

Work in two dimensional design such as all-over patterns, poster, book jackets, interior designs, designs for objects (to be presented in two dimensional rendering), etc.

## 4. PRINTS

Prints from linoleum, rubber, woodcuts, silk screen, etc. (Note: decorative or all-over prints on textile or paper should be entered as design.)

## RULES GOVERNING COMPETITION IN ART

1. No school may be represented by more than four (4) works in competition. The works submitted may all be in one classification or distributed among the classifications as the school wishes. This matter is left to the discretion of the art teacher or the school.

2. No individual student may enter more than one (1) work in any one classification.

3. Work must not consist of copies.

4. Work should be completely the entree's own production, subject of course, to the teacher's criticisms, suggestions and discussion.

5. Each individual piece of work must be mounted on cardboard, mattboard, or appropriate display board using margins to display work to good advantage. (Exception: oils may be framed if so desired, otherwise mount them as other entries; no glass may be used.)

a. No matt or display board may be smaller than fifteen (15) inches in its smallest dimension, nor larger than thirty (30) inches in its largest dimension. These same size limitations also apply to all-over dimensions of framed oils.

6. Each work entered must have a properly filled-in entry tag affixed to its back.

7. All entries must be mailed or sent before May 7, 1956 to:

Art Department  
Montana State University  
Missoula, Montana

a. Mark on outside of package or crate:  
Art—Interscholastic 1956

8. Mailing or shipping charges must be borne by the individual competitor or the school which he or she represents. Interscholastic will pay return shipping or mailing charges.

9. Crates or packages used for shipping must be so constructed that they may again be used for returning entries.

## ENTRY TAG

### ART INTERSCHOLASTIC 1956

Underline the proper classification below:

DRAWING . . . PAINTING . . .

DESIGN . . . PRINT

Name of artist \_\_\_\_\_  
Print or Type

Name of teacher \_\_\_\_\_  
Print or Type

Name of school \_\_\_\_\_  
Print or Type



# Prizes and Awards

## Track and Field

1. The Missoula Mercantile presents two cups, one to be awarded to the winner in Class A and one to the winner in Class B. These cups are awarded each year to the winners of the track and field meet, to be held for one year. They will be awarded permanently in 1958 to the school which shall have won the greatest number of points in five meets.
2. The Kiwanis cup, given by the Kiwanis club of Missoula, is awarded each year to the team breaking or equaling the largest number of records in the track and field meet. The cup is to be held for one year but will be awarded permanently in 1958 to the team which shall have broken or equalled the largest number of records in five meets.
3. A Rotary cup, given by the Rotary club of Missoula, is awarded permanently to the winning team in AA and B division.
4. The Lions cup, presented by the Lions club of Missoula, is awarded in the Class A division. It is awarded to the school in this group scoring the highest number of points in the meet.
5. Three University Relay plaques, given by the University, will be presented to the schools winning the relay races.
6. The ~~University~~ <sup>High School Association</sup> gives gold, silver and bronze medals, suitably engraved, for winners of first, second, third, fourth and fifth places in all track and field events for AA, A, B and C (where applicable) schools—a total of 212 prizes for the 14 athletic events.
7. The University will also give an individual prize to the contestant winning the greatest number of points in each division.

## Golf and Tennis

8. In the boys' golf tournament, gold, silver, and bronze medals will be awarded to the winners of first, second and third places, respectively. In the girls' golf tournament, a gold medal will be awarded to the first place winner and a silver medal will go to the second place winner. In both the boys' and girls' tennis tournaments, three gold medals and three silver medals will be awarded, one to each winner and each runner-up in the singles and doubles contests.

## Declamation and Little Theatre

9. Citations will be made for excellencies in the various divisions of declamation. In debate, original oratory, and extemporaneous speaking medals are awarded. Medals are also awarded in the several categories of judging in the Little Theatre Festival.

## Journalism

10. Six trophies will be awarded by Sigma Delta Chi, men's professional journalism fraternity. Three large, traveling trophies awarded to schools submitting the best editorials, sports stories, and news features. A school winning one of these three times will gain permanent possession. Three smaller trophies will be awarded permanently each year to the writers in the three categories.

## Art

11. Each student represented in competition will receive a certificate in recognition of participation.

First, second and third place medals will be awarded to winners in each classification.

Each school which is represented by a first place winner will receive an appropriate award.



