

51st 1957

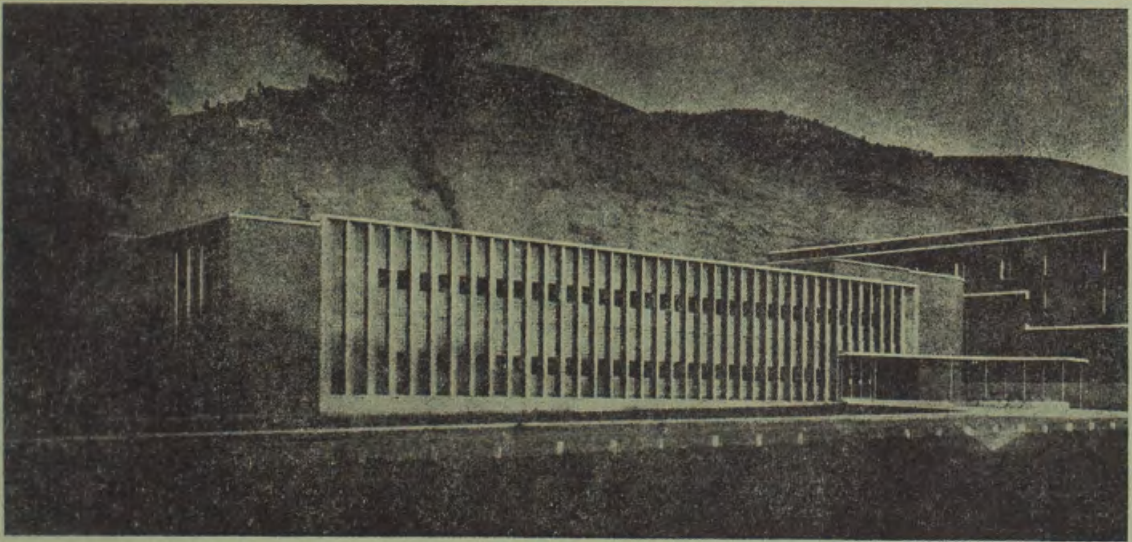
Programs-Trackmeet (Interscholastic)

ARCHIVES

51st

INTERSCHOLASTIC

The Climax of the High School Year



FRIDAY AND SATURDAY

MAY 17-18, 1957

MONTANA STATE UNIVERSITY

The Interscholastic Committee

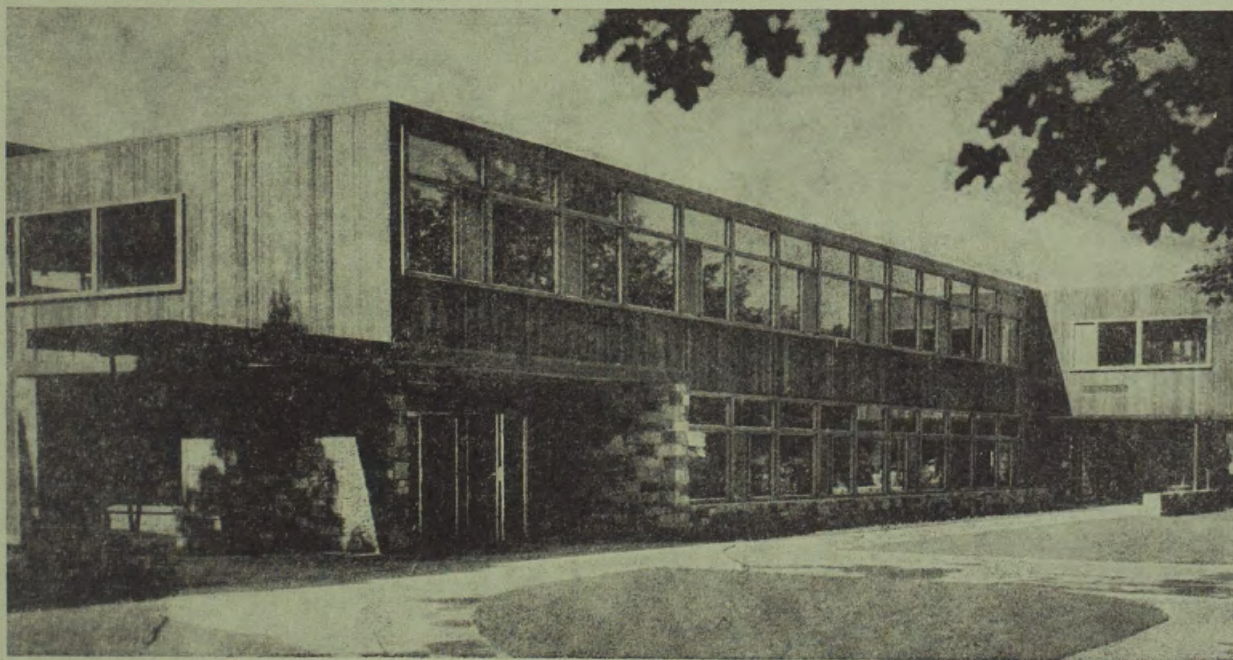
C. F. HERTLER, General Chairman

Edward S. Chinske	Manager of Athletics
Earl C. Lory and R. A. Diettert	Entry Blanks
Marcus J. Bourke	Ticket Sales
John F. Staehle and Fred A. Henningsen	Transportation
Andrew C. Cogswell	Entertainment of Men, Counselor
Maurine Clow	Entertainment of Women
Evelyn Seedorf	Declamation
Ralph Y. McGinnis	Debate, Original Oratory, and Extemporaneous Speaking
Ross L. Miller and Murdo A. Campbell	Publicity and Program
Firman H. (Bo) Brown, Jr.	Little Theatre
Edward B. Dugan	Editorial Association
Aden F. Arnold	Art
Vince V. Wilson	Tennis
John L. Lester	Golf
J. W. Howard	Consultant
F. L. Brissey, John L. Wailes and John Suchy	Gatekeepers
T. G. Swearingen	Head Scorer and Physical Equipment
Richard Barney, J. Byron Christian, Patricia Robinson	Student Members

FRONT COVER: Music School Building, Montana State University.



Interscholastic Headquarters



The Lodge

General Information

The Montana Interscholastic offers competition to Montana high school youths in track, golf and tennis (boys' and girls), debate, original oratory, extemporaneous speaking, declamation, dramatics and art. It also offers semi-competition for high school newspapers through the critical service of the Montana Interscholastic Editorial Association, sponsored by the Montana State University School of Journalism.

All student contact, however, is not competitive. In dramatics, for example, the non-competitive Little Theatre Festival gives festival entrants an opportunity to receive careful evaluation and detailed comment on their dramatic efforts. The Interscholastic Editorial Association meeting is non-competitive. Its great value lies in the three-day contact of students having common problems.

Members of the Interscholastic Committee encourage competition when it tends to give the greatest value to participants; they discourage it where it tends to overshadow the returns to individual students.

General Rules

1. A contestant may take part in as many different divisions of Interscholastic as he wishes. However, he should study the program carefully to be sure he will not encounter conflicts in time. The committee cannot adjust the Interscholastic program to fit the time of any one contestant. If, due to a conflict, he is not present when an event is called, he will give up his right to participate in that event.

2. All contestants will be expected to participate in the events for which they have been trained and in which they have been entered. No expenses will be paid for a contestant who does not take part in at least one event.

3. For specific rules governing track, tennis, golf, debate, original oratory, declamation, art and the editorial association look under those headings elsewhere in this pamphlet.

Expenses

By pro-rating the net earnings of Interscholastic among the various schools entered, the committee has in the past been able to refund the transportation costs of two contestants from each school entered. The committee cannot guarantee these expenses, but since the institution of the pro-rating plan, refunds have been 100 per cent.

Transportation refunds are based upon round-trip fares on the shortest bus route to Missoula for two contestants from each fully accredited high school entered in track, declamation, debate or Little Theatre. Costs of meals, sleepers, or hotel accommodations used en route, are not included in the refunds.

The committee will not pay for contestants' and chaperons' meals, nor for the transportation of chaperons and coaches.

In order to secure refunds, principals and coaches must consult Professor John F. Staehle at the Field House Saturday from 9 a.m. to 12 noon. Failure to do so may delay refunds for a considerable time.

Entry Blanks

An official entry blank will be sent out to all schools about April 22. This should be filled out at once and returned to C. F. Hertler, chairman, Interscholastic Committee, Montana State University, Missoula, Montana.

Names of all contestants in golf, tennis, journalism, debate, original oratory, and art must be submitted on the official entry blanks, and be in the hands of the committee by May 2. Later entries cannot be accepted. To insure prompt delivery, the entries should be sent by registered mail.

It is extremely important that schools indicate at the proper place on the blanks, when and how their contestants will arrive. Members of the University's two sophomore service organizations, Bear Paw and Spur, will meet all incoming trains. All teams and participants should report immediately upon ar-

rival to the Interscholastic Headquarters in the Lodge on the campus. Here quarters will be assigned and contestant badges issued.

All correspondence relative to the meet in general should be addressed to C. F. Hertler, chairman, Interscholastic Committee. Letters or telegrams requesting specific information may be addressed to committee members having charge of specific events. For a list of these names, see the inside front cover.

Housing and Chaperons

The Interscholastic committee will arrange for, but not pay for, housing of all contestants and chaperons. Girl contestants and their chaperons will be housed in the University accommodations, if possible, or in private homes. Boy contestants will be housed in hotels, motels, etc. **Principals, chaperons and coaches must assume responsibility for the department of their charges.** Should hotels prove damages caused by contestants, or report failure to pay obligations incurred, the committee will withhold payment of travel expenses or disqualify the offending school from participation in future Interscholastic meets.

If two or more schools plan to place their contestants under the supervision of the same coach or chaperon, they must notify the committee not later than the last day set for receipt of entry blanks. Otherwise it may be impossible to secure lodging for contestants in the same place selected for coaches or chaperons.

Because the committee feels that no school should send contestants to Interscholastic without competent chaperons, it reserves the right to refuse lodging to unaccompanied contestants. The committee insists that coaches and chaperons stay with their charges, except during actual competition.

Contestants badges and lodging assignment will be given to all coaches and chaperons. Application for these should be made at the Interscholastic headquarters in the Lodge. The badges will admit their holders to all Interscholastic events.

PROGRAM OF THE MEET

FRIDAY, MAY 17

- 6:30 a.m., **Boys' Golf.** All contestants meet in front of the Lodge for transportation to Missoula Country Club course.
- 8:00 a.m., **Boys' Tennis.** All participants report to Men's gymnasium.
- 8:00 a.m., **Extemporaneous Speaking.** Drawings for topics in Liberal Arts Lounge.
- 8:00 a.m., **Original Oratory, Round I.** Assignments in Liberal Arts Lounge.
- 8:00 a.m., **Declamation.** Meeting of all contestants, Liberal Arts Room 104. Round I will follow this meeting.
- 8:00 a.m., **Girls' Golf.** All contestants meet in front of the Lodge for transportation to Missoula Country Club course.
- 8:30 a.m., **Boys' Tennis,** (singles and doubles) University courts.
- 8:30 a.m., **Girls' Tennis.** All participants report to Women's Center.
- 9:00 a.m., **Art—Arts and Crafts Building.**
- 9:00 a.m., Meeting of athletic representatives of all schools at Men's Gym.
- 9:00 a.m., **Girls' Tennis** (singles and doubles) University courts.
- 9:00 a.m., **Original Oratory, Round II.**
- 9:00 a.m., **Extemporaneous Speaking,** Round I.
- 9:00 a.m., **Interscholastic Editorial Association,** Journalism building.
- 10:00 a.m., **Debate, Round I.** Assignments in Liberal Arts Lounge.
- 10:00 a.m., **Declamation.** Round II.
- 11:00 a.m., **Original Oratory, Round III** (semi-finals).
- 1:00 p.m., **Debate, Round II.**
- 1:00 p.m., **ROTC Review.**
- 1:10 p.m., **Track and Field Meet,** (parade of athletes) Dornblaser field (see program of events, page 11).
- 2:00 p.m., **Extemporaneous Speaking,** Drawing for topics, Liberal Arts Lounge.
- 2:00 p.m., **Declamation, Semi-Finals.**
- 3:00 p.m., **Extemporaneous Speaking,** Round II.
- 4:00 p.m., **Debate, Round III.**
- 7:15 p.m., **Singing on the Steps,** University Hall.

- 8:00 p.m., **Declamation and Original Oratory, Finals.** Student Union Auditorium.

SATURDAY, MAY 18

- 6:30 a.m., **Boys' Golf Tournament.** All contestants meet in front of the Lodge for transportation to Missoula Country Club course.
- 8:00 a.m., **Boys' Tennis.** All participants report to Men's gymnasium.
- 8:00 a.m., **Debate, Round IV.**
- 8:00 a.m., **Girls' Tennis.** All contestants report to Women's Center.
- 8:00 a.m., **Girls' Golf.** All contestants meet in front of the Lodge for transportation to Missoula Country Club course.
- 8:30 a.m., **Boys' Tennis** (singles and doubles) University courts.
- 8:30 a.m., **Little Theatre Festival,** Simpkins Little Theatre and Student Union Theatre.
- 9:00 a.m. to 12 noon, **Travel Refunds.** Principals and coaches confer with Professor Staehle, Field House.
- 9:00 a.m., **Girls' Tennis,** (singles and doubles) University courts.
- 9:00 a.m., **Extemporaneous Speaking,** Drawing for topics. Liberal Arts Lounge.
- 10:00 a.m., **Extemporaneous Speaking,** Round III.
- 10:30 a.m., **Debate, Round V** (quarter finals).
- 12:00 noon, **Luncheon** meeting of teachers of English, Drama and Speech.
- 1:15 p.m., **Track and Field Meet, finals.**
- 1:30 p.m., **Debate, semi-finals.**
- 1:30 p.m., **Little Theatre Festival,** Simpkins Little Theatre and Student Union Theatre.
- 2:00 p.m., **Extemporaneous Speaking,** Drawing for topics. Liberal Arts Lounge.
- 3:00 p.m., **Extemporaneous Speaking,** finals. Liberal Arts, 104.
- 4:30 p.m., **Debate, finals.** Liberal Arts 104.
- 8:15 p.m., **Little Theatre Festival and** awarding of prizes, Student Union Theatre.

Points in Track and Field Meet, 1956

Class AA								
Missoula	80	1/2	Valier	16		Simms	16	1/2
Great Falls	38		Ronan	14	5/6	Troy	16	
Butte Public	30		Hamilton	14		White Sulphur		
Helena	26	1/2	Malta	13	1/2	Springs	15	1/2
Park County	15		Whitefish	13		Jefferson County	14	1/2
Billings	13	1/2	Anaconda Central	13		Corvallis	14	
Flathead County	8		Choteau	12		Cascade	13	
Anaconda	5		Big Timber	9		Plains	10	
Butte Central	4		Conrad	8		Sacred Heart,		
Gallatin County	3	1/2	Beaverhead County	6	1/2	Miles City	10	
Class A								
Havre	54		Thompson Falls	6		Hot Springs	9	
Sidney	47		Fairfield	5		Power	8	
Dawson County	27		Poplar	5		St. Regis	6	
Fergus County	26		Harlowton	4		Edgar	5	1/2
Custer County	22	1/2	Libby	4		Charlo	5	
Laurel	22		Powell County	4		Augusta	4	
Hardin	9	1/2	Browning	3		Sheridan	4	
Billings Central	7		Cut Bank	3		St. Leo,		
Great Falls Central	6		Lodge Grass	3		Lewistown	4	
Glasgow	3		Loyola, Missoula	3		Three Forks	4	
Class B								
Polson	22	1/3	Columbus	2		Victor	4	
Shelby	18	1/3	St. Ignatius	2		Winifred	4	
Stevensville	16		Fort Benton	1	1/2	Grass Range	3	
			Chinook	1		Rosebud	3	
			Lincoln County	1		Belgrade	2	
			Class C					
			Townsend	24		Darby	2	
			Twin Bridges	20		Noxon	1	
						Terry	1	
						Whitehall	1	

Montana Interscholastic Track and Field Records

Interscholastic meet records are the best marks established in any event in the meet regardless of whether established by Class AA, A, B, or C school contestants.

Event	Record	Holder
100-yard dash	9.8 sec.	R. O'Malley, Butte, 1933
220-yard dash	21.6 sec.	R. O'Malley, Butte, 1933
440-yard dash	50.2 sec.	R. Strutz, Billings, 1951
880-yard run	1:58.7	R. Merwin, Missoula, 1956
Mile run	4:27.6	J. Kittell, Missoula, 1945
High hurdles	14.8 sec.	Don McAuliffe, Butte, 1948
180-yard low hurdles	19.6 sec.	C. Orr, Missoula, 1953
Pole vault	12 ft. 10 in.	W. Custer, Missoula, 1930
Javelin throw	197 ft. 5 in.	R. Gustafson, Corvallis, 1938
Shot put	54 ft. 4 1/4 in.	K. Wersland, Missoula, 1956
Discus throw	162 ft. 8 1/2 in.	J. Roban, Great Falls, 1953
High jump	6 ft. 3 1/4 in.	M. Grimes, Helena, 1951
Broad jump	22 ft. 8 1/8 in.	K. Nelson, Missoula, 1955
Half Mile Relay	1 min. 32.1 sec.	(D. and R. Halverson, J. Haslip, J. Griffith) Helena, 1951

Rules Governing Track and Field Events

1. Except for the method of scoring, the order of events and other exceptions noted in the following paragraphs, rules of the National Interscholastic Federation will govern all track and field events.

2. All students certified to take part in this meet must be eligible in accordance with the rules of eligibility adopted by the Montana High School Association.

3. The 1957 meet will be run off in AA, A, B and C divisions.

4. Participation in track and field events shall be limited to the first five (5) place winners in each event from each of the fourteen divisions as established for track competition by the Montana High School Association. Exceptions within the ruling of the Association may be accepted. All entries must be certified by each divisional meet manager and submitted on forms provided to the manager of the Interscholastic meet, Mr. Chinske, on or before Monday, May 13. Entries received after that date will not be accepted. Responsibility rests with the divisional meet manager to submit entries before the deadline.

5. Representatives of competing schools will meet in the University Gymnasium at 9:00 a.m., Friday, May 17th to assign and draw heats and lanes for contestants in running events and to make necessary scratches. Edward S. Chinske, the track meet manager,

will represent any school whose coach cannot be present.

6. Coaches, trainers, attendants and entries who have been scratched will not be allowed on the field during the meet. Contestants competing in Friday's events must be in uniform and must be wearing their contestant's number in order to gain admittance to the field. Only those contestants who are actually competing in the finals on Saturday will be allowed on the field. Relay runners who have not qualified in the other events of Saturday's program will be admitted only when it is time for them to warm up for that event.

7. In determining scores for the awarding of prizes in track and field events, the first place shall count 6 points; second place, 4 points; third place, 3 points; fourth place, 2 points; fifth place, 1 point. One fourth of the points scored by each team placing in the relay will be credited to each member of that relay team, in determining individual high point winners. Should the referee declare a tie for any place in any event the point or points scored shall be divided.

8. All contestants must wear jerseys and numbers must be pinned on the back of their jerseys.

9. Any contestant not reporting to the starting official at the last call for any event shall be scratched for the event.

Program of Track and Field Events

Unless specifically indicated otherwise in the program, preliminary races shall be run in the following order: Class C, B, A and AA. Where no more than ten contestants from any class are entered in a running event, no trials or preliminary heats shall be run.

FRIDAY, MAY 17, 1:10 P.M.

Parade of Athletes

Trials, 100-yard dash—Classes B and C

Trials, 120-yard high hurdles—Classes B and C

Trials, 440-yard run—Classes B and C

Final, Mile Run—Classes B and C

Trials, 220-yard dash—Classes B and C

Final, 880-yard run—Classes AA and A

Trials, 180-yard low hurdles—Classes AA and A

Trials, 880-yard relays—Classes B and C

Finals in the Class B and Class C pole vault and in the Class AA and Class A high jump will be held concurrently with the running events.

Trials in the following field events will be held with participants competing in flights. Class B and Class C discus throw (on practice field north of Dornblaser Field). Class AA and Class A shotput, Class B and Class C javelin throw and Class AA and Class A broadjump (all on Dornblaser field), followed by Class B and Class C shotput, Class AA and Class A javelin throw, Class B and Class C broadjump (all on Dornblaser Field), and Class AA and Class A discus throw (on practice field north of Dornblaser field).

SATURDAY, MAY 18, 1:00 P.M.

Finals, 100-yard dash

Finals, 120-yard high hurdles

Final, 880-yard run, Class B

Final, 880-yard run, Class C

Finals, 440-yard run

Final, Mile run, Class AA

Final, Mile run, Class A

Finals, 220-yard dash

Finals, 180-yard low hurdles

Finals, 880-yard relays. (all relays will be run in lanes with staggered starts and on comparative time basis if there are more than five teams in any class).

Finals of the Class AA and Class A pole vault and Class B and Class C high jump will be held concurrently with the running events.

Finals of the weight throwing events and the broad-jump will be as follows: Class AA broad jump, Class A shot put, and Class B and Class C discus throw; followed by Class AA shot put, Class A discus throw, and Class B and Class C broad jump; followed by Class AA discus throw, Class A broad jump, and Class B and Class C shot put; followed in order by the Class B and Class C, Class A, and Class AA javelin throw.

The Committee reserves the right to qualify more contestants than the above calls for, and to eliminate any semi-final found to be unnecessary.

All 440, 880 and mile races will be started at the head of the straightaway (thus eliminating the first turn.)

Golf and Tennis Tournament

Winner in Girls' Golf Tournament for 1956: Jane Farnum, Polson high school.

Winner in Boys' Golf Tournament for 1956: Don Albright, Missoula County high school and Ralph Hawkins, Billings Public high school. (Tie)

Winners in Girls' Tennis Tournament for 1956: Singles—Judy Flightner, Missoula County; Second—Sandi Lockwood, Hamilton high school. Doubles—Gloria Foltz and Judy McKellop, Hamilton high school; Second—Denisel Leary and Billie Lynch, Butte Public high school.

Winners in Boys' Tennis Tournament for 1956: Singles—W. Evers, Darby high school; second—R. Zoske, Darby high school. Doubles—Same two as mentioned above.

RULES GOVERNING TENNIS AND GOLF

(See General Rules, page 3)

Coaches may submit as many names as they wish on the entry blank, but no more than two from any one school may compete in the girls' golf tournament, and the boys' golf tournament. No more than two may compete in the girls' tennis singles and the boys' tennis singles. In tennis doubles, one boys' team and one girls' team from each school may be entered. Contestants entered in the tennis singles may also enter in the doubles.

Tournaments are arranged for both boys and girls. Entries must be sent on the regular entry blanks. (See "Entry Blanks," page 4.) The committee will pay no expenses of the entrants in these tournaments.

Golf. Boys' tournament. A 36-hole medal-play tournament, 18 holes on Friday morning and 18 holes on Saturday morning, starting at 6:30 a.m. on the Missoula Country Club golf course. See program of meet, page 5.

Girls' Tournament. An 18-hole medal-play tournament, 9 holes on Friday morning and 9 holes on Saturday morning, starting at 8:00 a.m. at Missoula Country Club golf course.

Tennis. Boys' tournament. Singles and doubles Friday, 8 a.m. to 7 p.m. and Saturday, 8 a.m. to 7 p.m. Men's gymnasium and University courts.

Girls' tournaments. Singles and doubles, Friday 8:30 a.m. to 7 p.m. and Saturday, 8 a.m. to 7 p.m. Women's gymnasium and University courts.

There will be one single elimination tournament in doubles for the boys and one for the girls.

Awards will be given to first, second, and third place winners in boys' golf; first and second place winners in girls' golf; and first and second place winners in both boys' and girls' tennis.

Interscholastic Editorial Association

ALL-STATE RATINGS FOR 1956:

Konah, Missoula County high school; Kyote, Billings Senior high school; Mountaineer, Butte high school; Live Wire, Cut Bank high school; Laurel Leaves, Laurel high school; Stampede, Havre high school; Cone-Let, Sacred Heart academy, Missoula; Cliff Dweller, Thompson Falls high school; Echo, Corvallis high school; Growl, Choteau high school; Evergreen, Lincoln County high school; Headwaters, Three Forks high school; Ketochi, Cascade high school; Panther, Valier high school; Skyline, Charlo high school; Static, Ennis high school; Sun River Valley Success, Simms high school; Banner, Moore high school; Beacon Flashes, Alberton high school; Bear Paw, Box Elder high school; Black and White, Winnett high school; Broad Views, Broadview high school; Hi-Power, Power high school; Hi-Times, Flaxville high school; Jolitana, Joliet high school; Mission Bells, Mission high school; Rimrock Echo, Lavina high school; Senior Sentinel, Fromberg high school; Shovel, Colstrip high school; Tatler, Westby high school; Pony Express, Paris Gibson junior high school, Great Falls.

Sigma Delta Chi, professional journalism fraternity, will award six trophies for writings in three divisions: news feature, editorial and sports. Individual trophies will be awarded to contestants placing first in each division, and larger traveling trophies will be awarded to the schools from which the winning writers are delegates. A school winning one of these trophies three times will gain permanent possession.

Theta Sigma Phi, professional journalism fraternity for women, will make two "out-standing journalist awards" to the girls selected for having shown most notable achievements in scholarship, journalism activities and other high school activities. Nominees will be selected by high school publication staffs and advisers.

The Montana Interscholastic Editorial Association will meet in the Journalism

building at 9 a.m. Friday. Each member school is entitled to two voting delegates, each of whom will receive a contestant badge. Delegates, however, must be listed on the school's entry blank (see page 4).

Annual newspaper ratings will be announced at the close of the Friday morning session. Awards in this contest will be made upon the basis of the following classification:

Class A—Printed publications from schools with enrollments of 500 or more.

Class B—Printed publications from schools with enrollments between 250 and 500.

Class C—Printed publications from schools with enrollments between 100 and 250.

Class D—Printed publications from schools with enrollments less than 100.

Class E—Duplicated papers from schools with enrollments of 75 or more.

Class F—Duplicated papers from schools with enrollments of less than 75.

Class G—Papers which are published as inserts or departments in community newspapers.

Papers in each class will be rated All-State, Superior, Excellent, Good, Fair, or no rating.

For further information write to Prof. E. B. Dugan, School of Journalism, Montana State University, Missoula, Montana.

Speech Events

Sweepstakes Winner, 1956: Flathead County high school.

A trophy is awarded by the Montana High School Association to the school scoring the greatest number of points in all events.

(Continued on page 11)

(Continued from page 10)

Declamation

Finalists for 1956: Oratorical, First—Bill Rutan, Great Falls Central; Second—Ruth Ann Leveque, Butte Girls Central.

Dramatic, First—Karen Doherty, Butte Girls Central; Second—M. Pazzini, Great Falls Central.

Humorous, First—Dave Keller, Havre Central; Second—Marilyn Dickson, Chinook high school.

Rules Governing Declamatory Contest

(See General Rules, page 3)

1. While both boys and girls may participate, there will be no separate boys' and girls' contests. Instead, three different types of declamation may be presented: serious or dramatic declamation, humorous declamation, and oratorical declamation.

2. All contestants in the state tournament must have ranked among the first five winners in his division of declamation in the district tournament. Thus five dramatic declaimers, five humorous declaimers, and five oratorical declaimers will represent each district.

3. Each school may enter a **maximum** of **three speakers**, distributing this number among the above categories in any way the principal or coach desires.

4. There will be preliminary, semi-final, and final contests. The first two rounds will include impromptu interpretation.

5. A general assembly of contestants, coaches, and judges will be held in Room 104 of the Liberal Arts Building, May 17, at 8 a.m., where instructions will be given and contestants sent to their different divisions. **All concerned should report promptly.**

6. Two speakers from each division will participate in the final contest Friday

evening, and to each of them a medal will be awarded. Semi-finalists will **receive ribbons.**

7. Declaimers are urged to choose selections of high literary value.

8. No selection may take longer than **eight minutes** to deliver; contestants exceeding this limit will not be considered in choosing winners.

9. Judges shall base their judgment on the speaker's ability to communicate what he has to say. Such communication will depend on the speaker's understanding and appreciation of the writing, intellectual and emotional, and his impartation of it to his hearers.

10. No declamation (oratorical, serious or humorous) which has been given in the finals of the year immediately preceding shall be permitted to be used in the finals of the declamation contest. For instance this year (1957) the following 1956 selections delivered by representative finalists are barred:

"Anastasia"; "The Murder of Lidice"; "Teahouse of the August Moon"; "Speech Judges Nightmare"; "Cross of Gold"; and "Magic Night."

11. For further information address Dr. Evelyn Seedorf, Montana State University, Missoula, Mont.

Debate

Winners for 1956: Team, Flathead County high school; Best Individual Debater, Sid Schrauger, Flathead County high school, Kalispell.

Question for 1957: "Resolved: That the federal government should sustain the price of major agricultural products at not less than 90 per cent of parity."

All communications concerning debate should be addressed to Ralph Y. McGinnis, director, Montana High School Speech League, Montana State University, Missoula, Montana.

(Continued on page 12)

(Continued from page 11)

Provisions for Debate Tournament

1. All debate teams in the state tournament must have ranked among the first five winning teams in their district tournament.

2. The tournament will begin Friday at 10 a.m. Coaches of all teams will meet in Room 104 of Liberal Arts for the pairings. Three rounds will be held Friday with all teams debating. The state championship debate will be in Room 104, Liberal Arts building, at 4:30 p.m., Saturday.

3. All teams will debate four preliminary rounds. The eight highest ranking teams will enter the elimination rounds during which one defeat will eliminate a team from further competition.

4. Names of all debaters and coaches must be listed on the entry blank which will be sent to school principals on or about April 22. The names of all entries must be in the hands of the Interscholastic committee by May 6.

5. Subject to change by mutual agreement of participants and coaches, all debates shall be conducted in accordance with the plan provided for in the league constitution.

Extemporaneous Speaking

Winner for 1956: Eugene Marans, Butte Public high school.

All communications concerning extemporaneous speaking should be addressed to Ralph Y. McGinnis, Montana State University, Missoula, Montana.

Provisions for the Extemporaneous Speaking Contest

1. One hour before speaking, the contestant will draw by lot three specific topics based on one of the following general subjects:

- a. The 1957 U.S. Congress.
- b. The United Nations in 1957.
- c. The Constitution of the U.S.

The specific speech topics will have been chosen from materials appearing in the

January, February, March and April issues of Time, Scholastic, Readers Digest, and Newsweek magazines.

2. The contestant will then choose one of the three as the subject for his speech.
3. The contestant will have one hour for the preparation of his speech.
4. At the scheduled time for beginning the contest, the contestants will speak according to the speaking order determined by lot.
5. Maximum time limit for speaking will be 8 minutes. Minimum time limit will be 5 minutes.
6. The contest will begin Friday at 8 a.m. Drawings for topics will be in the Lounge of Liberal Arts Hall. Contestants will take part in three preliminary rounds. The highest ranking six will speak in the finals.
7. All extemporaneous speakers in the state tournament must have ranked among the first five winning extemporaneous speakers in their district tournament.

Original Oratory

Winner for 1956: Larry O'Connell Flathead County high school, Kalispell.

All communications concerning oratory should be addressed to Ralph Y. McGinnis, Montana State University, Missoula, Montana.

Provisions for Oratory Tournament

1. Orations must be written originally by the students delivering them. The maximum time limit is 10 minutes with no minimum. Sectioning and speaking order will be determined by lot.

2. The tournaments will begin Friday at 8 a.m. Contestants and coaches will meet in the Lounge of Liberal Arts Hall for instructions. Contestants will take part in three preliminary rounds. Two finalists will be chosen to speak in the final program.

3. All orators in the state tournament must have ranked among the first five winning orators in their district tournament.

Little Theatre Festival

WINNERS IN 1956:

PLAYS IN SIMPKINS LITTLE THEATRE:

Best Actor:

Keith Mora, Great Falls Central high school

Ed Risse, Columbia Falls high school

Best Character Actor:

Kenneth Karge, Wolf Point high school

Best Character Actress:

Carolyn Pierce, Whitehall high school

Best Bit Actor:

Noel Kelly, Great Falls Central high school

Best Bit Actress:

Dorothy Deflyer, Columbia Falls high school

PLAYS IN MISSOULA COUNTY HIGH SCHOOL THEATRE:

Best Actor:

Fred Jackson, Billings high school

Best Actress:

Judy Hayes, Billings high school

Best Character Actor:

LeRoy Hood, Shelby high school
Jack Rouse, Billings high school

Best Bit Actor:

David Irwin, Loyola high school

Best Bit Actress:

Sue McDonald, Sacred Heart Academy

PLAYS IN UNIVERSITY THEATRE:

Best Actor:

Charles Lewis, Gallatin County high school

Best Actress:

Kay Gossack, Gallatin County high school

Best Character Actor:

Dave Keller, Havre Central high school

Best Character Actress:

Roberta McGuire, Butte Girls' Central

Best Bit Actor:

Bruce Jacobson, Gallatin County high school

David Schlechten, Gallatin County high school

The non-competitive festival form of participation will be used in the Little Theatre again this year.

One-act plays or cuttings from longer plays, neither exceeding 35 minutes in playing time nor being less than 20 minutes and involving not more than one set of scenery, may be entered.

Adjudicators will comment on all Festival entrants. The evening program will consist of three plays selected by the adjudicators for imagination, excellence of acting, and general quality of production. Since one-third of the entrants will play in Simpkins Little Theatre, one-third in the Student Union Theatre, and one-third in the Missoula County High School Theatre with an adjudicator in each theatre, identical medals will be awarded among each group of entrants as follows:

Best actor, best actress, best character actor, best character actress, best bit actor and best bit actress.

All communications concerning to Firman H. (Bo) Brown, Jr., Montana State University, Missoula, Montana.

Art Competition

For the 1957 Interscholastic, work in the following classifications will be accepted in competition. In future years, other classifications may be added:

1. DRAWING

Work in which a single medium has been used such as: charcoal, pencil, ink, one color of crayon, chalk, etc.

2. PAINTING

Work in watercolor (either transparent or opaque, tempera is acceptable), oil, pastel, colored crayons, or any generally used painting medium.

3. DESIGN

Work in two dimensional design such as all-over patterns, poster, book jackets, interior designs, designs for objects (to be presented in two dimensional rendering), etc.

4. PRINTS

Prints from linoleum, rubber, woodcuts, silk screen, etc., of a pictorial nature. (Note: decorative or all-over prints on textile or paper should be entered as crafts.)

5. CRAFTS

Craft articles of wood, metal, leather, ceramics, printed fabrics, etc. (Please note rule No. 3 regarding copies).

RULES GOVERNING COMPETITION IN ART

1. No school may be represented by more than four (4) works in competition. The works submitted may all be in one classification or distributed among the classifications as the school wishes. This matter is left to the discretion of the art teacher or the school.
2. No individual student may enter more than one (1) work in any one classification.
3. Work must not consist of copies.
4. Work should be completely the entree's own production, subject of course, to the teacher's criticisms, suggestions and discussion.
5. Each individual piece of two dimensional work must be mounted on cardboard, mattboard, or appropriate display board using margins to display work to good advantage. (Exception: oils may be framed if so desired, otherwise mount them as other entries; no glass may be used.)
 - a. No matt or display board may be smaller than fifteen (15) inches in its smallest dimension, nor larger than thirty (30) inches in its largest dimension. These same size limitations also apply to all-over dimensions of framed oils.
 - b. No individual piece of craft work may be of such size that it cannot be contained in a package which is acceptable to the Parcel Post regulations governing a first class post office, i.e., 70 inches, length and girth combined and not to exceed 40 lbs. in weight.
6. Each work entered must have a properly filled-in entry tag affixed to its back.
7. All entries must be mailed or sent before May 7, 1957 to:
Art Department
Montana State University
Missoula, Montana
 - a. Mark on outside of package or crate:
Art—Interscholastic 1957
8. Mailing or shipping charges must be borne by the individual competitor or the school which he or she represents. Interscholastic will pay return shipping or mailing charges.
9. Crates or packages used for shipping must be so constructed that they may again be used for returning entries.

ENTRY TAG

ART INTERSCHOLASTIC 1957

Underline the proper classification below:

DRAWING . . . PAINTING . . .

DESIGN . . . PRINT . . . CRAFTS

Name of artist _____
Print or Type

Name of teacher _____
Print or Type

Name of school _____
Print or Type

Prizes and Awards

Track and Field

1. The Missoula Mercantile presents two cups, one to be awarded to the winner in Class A and one to the winner in Class B. These cups are awarded each year to the winners of the track and field meet, to be held for one year. They will be awarded permanently in 1958 to the school which shall have won the greatest number of points in five meets.
2. The Kiwanis cup, given by the Kiwanis club of Missoula, is awarded each year to the team breaking or equaling the largest number of records in the track and field meet. The cup is to be held for one year but will be awarded permanently in 1958 to the team which shall have broken or equalled the largest number of records in five meets.
3. A trophy will be awarded premanently to the school which scores the most points in each classification.
4. Gold, silver and bronze medals, suitably engraved, will be awarded for winners of first, second, third, fourth and fifth places in all track and field events for AA, A, B and C schools.
5. The University will give an individual prize to the contestant winning the greatest number of points in each division.

Golf and Tennis

6. In the boys' golf tournament, gold, silver, and bronze medals will be awarded to the winners of first, second and third places, respectively. In the girls' golf tournament, a gold medal will be awarded to the first place winner and a silver medal will go to the second place

winner. In both the boys' and girls' tennis tournaments, three gold medals and three silver medals will be awarded, one to each winner and each runner-up in the singles and doubles contests.

Declamation and Little Theatre

7. Citations will be made for excellencies in the various divisions of declamation. In debate, original oratory, and extemporaneous speaking medals are awarded. Medals are also awarded in the several categories of judging in the Little Theatre Festival.

Journalism

8. Sigma Delta Chi, professional journalism fraternity, will award six trophies for writings in three divisions: news feature, editorial and sports. Individual trophies will be awarded to contestants placing first in each division, and larger traveling trophies will be awarded to the schools from which the winning writers are delegates. A school winning one of these trophies three times will gain permanent possession.

Art

9. Each student represented in competition will receive a certificate in recognition of participation.

First, second and third place medals will be awarded to winners in each classification.

Each school which is represented by a first place winner will receive an appropriate award.

