

THE  
55th  
ANNUAL

WINTERSTOCKS



**MONTANA STATE UNIVERSITY - MAY, 1961 - MISSOULA, MONTANA**



The original home of MSU, Main Hall is the Administrative seat of the University. Standing at the top of the Oval, the tower houses a memorial clarion.

The Fine Arts Building houses both the University Theater and the Masquer Theater, headquarters for the Little Theater Festival.



Once the home of the Grizzlies, the Men's Gym now houses the Physical Education Department. It is headquarters for track and field events for the 55th annual Interscholastic.

MSU's "justly famous," according to John Gunther's "Inside U.S.A.," School of Journalism is home to the student daily newspaper, the Kaimin, and the MIEA events and meetings.



# 1961 Interscholastic Committee

|                          |                             |
|--------------------------|-----------------------------|
| CHARLES F. HERTLER ..... | General Chairman            |
| J. Benmitt .....         | Publicity and Programs      |
| F. Brown .....           | Little Theatre              |
| M. Chessin .....         | Gatekeeper                  |
| Ed. Chinske .....        | Track                       |
| Miss M. Clow .....       | Women's Entertainment       |
| A. Cogswell .....        | Men's Entertainment         |
| T. Crowder .....         | Administrative Arrangements |
| R. Diettert .....        | Entry Blanks                |
| E. B. Dugan .....        | Editorial Association       |
| C. Lamb .....            | Registration                |
| R. McGinnis .....        | Speech Events               |
| G. Mills .....           | Transportation              |
| J. Hashiasaki .....      | Head Scorer                 |
| E. Torgrimson .....      | Physical Equipment          |
| V. Wilson .....          | Tennis                      |

## Students:

|                 |                |
|-----------------|----------------|
| Bear Paws ..... | Gleenn Aasheim |
| Spurs .....     | Myra Shults    |

No University Housing will be available to Interscholastic contestants because of increased enrollment. A notice suggesting accommodations will be sent each school and assistance in locating housing will be offered at the registration table.

Information regarding specific events should be addressed to the chairman in charge of that event. All letters and telegrams should be addressed to the individual or committee, Montana State University, Missoula, Montana.



# *General Information*

Competition to Montana high school students in track, golf, tennis, debate, original oratory, extemporaneous speaking, declamation and dramatics is offered during the Interscholastic meet. Semi-competition for high school newspapers through the critical service of the Montana Interscholastic Editorial Association sponsored by the University's School of Journalism is also offered. The MIEA meet, while non-competitive, offers great value to students having common interests and problems.

The Little Theatre Festival offers festival entrants an opportunity to receive careful evaluation and detailed criticism of their dramatic efforts.

The Interscholastic Committee encourages competition when it tends to give the greatest value to participants; it discourages it where it tends to overshadow the returns to the individual student.

## *General Rules*

1. A contestant may take part in as many different divisions of Interscholastic as he wishes. However, he should study the program carefully to be sure he will not encounter conflicts in time. If he cannot be present for an event because of a time conflict, he will give up all right to participate in that event.

2. All contestants will be expected to participate in the events for which they have been trained and in which they have been entered.

3. For specific rules governing track, tennis, golf, the editorial association, debate and other speech events consult those headings elsewhere in the bulletin.

## *Entry Blanks*

An official entry blank for non-track events will be sent to all schools about April 21. This should be filled out and returned at once to C. F. Hertler, chairman, Interscholastic Committee, Montana State University, Missoula, Montana.

Names of all contestants in golf, tennis, journalism, debate and original oratory must be submitted on the official

entry blank and in the hands of the committee by May 9th. Later entries cannot be accepted. To insure prompt delivery, the entries should be sent by registered mail.

All correspondence relative to the meet in general should be addressed Mr. Hertler. **Letters or telegrams requesting specific information may be addressed to committee members in charge of specific events.** This information is found on the inside front cover.

## *Housing and Chaperons*

**THE UNIVERSITY CAN PROVIDE NO HOUSING ACCOMMODATIONS ON CAMPUS FOR PARTICIPANTS DURING THE 1961 PROGRAM.** Lists of motels and hotels will be sent to schools and assistance will be given in securing housing in these establishments. Principals, chaperons and/or coaches must assume responsibility for the deportment of their charges.

## *Contestants' Badges and Coaches' Passes*

Participants in the meet must register at the registration table in the University Lodge. Contestants' badges will be given to all participating students, these badges admitting them to all Interscholastic events.

Coaches will be issued complimentary tickets at the registration table. Only coaches or directors of events will receive complimentary tickets.



Registration tables are located in the Lodge at the end of University Avenue. Here meals and snacks may be purchased from the Grill. The unique structure houses the student cafeteria, bookstore and several large meeting and recreation rooms.

# *Track and Field Rules*

1. Except for the scoring method, order of events and other exceptions noted in subsequent paragraphs, rules of the National Federation of High School Associations govern all track and field events.
2. All students certified to take part in this meet must be eligible in accordance with the rules of eligibility adopted by the Montana High School Association.
3. The 1961 meet will be run off in AA, A, B and C divisions.
4. Participation in track and field events shall be limited to the first five (5) place winners in each event from each of the 14 divisions as established for track competition by the Montana High School Association. No exceptions. A High School Association ruling prohibits the entering of fifth place ties in the 100 and 220 yard dashes and hurdle events. Problems of ties in these events must be resolved by each divisional meet manager before entries are made to the state meet. All entries must be certified by each divisional meet manager and submitted on forms provided to the track chairman of the Interscholastic meet, Mr. Chinske, on or before Monday, May 15. Entries received after that date will not be accepted. Responsibility rests with the divisional meet manager to submit entries before the deadline.
5. Representatives of competing schools will meet in the Men's Gymnasium at 9 a.m. Friday, May 19th, to receive information regarding placement of contestants in heats for track events and flights for field events.
6. Coaches, trainers, attendants and entries who have been scratched will not be allowed on the field during the meet. This includes college and University coaches not serving in an official capacity. Contestants competing in Friday's events must be in uniform and must wear their contestant's number to gain admittance to the field. Only those contestants who are actually competing in the finals on Saturday will be allowed on the field. Relay runners who have not qualified for other events Saturday will be admitted only when it is time for them to warm up for that event.
7. In determining scores for the awarding of prizes in track and field events, the first place shall count 6 points;



second place, 4 points; third place, 3 points; fourth place, 2 points; fifth place, 1 point. One fourth of the points scored by each team placing in the relay will be credited to each member of that relay team to facilitate determining individual high point winners. Should the referee declare a tie for any place in any event the point or points scored shall be divided.

8. All contestants must wear jerseys and numbers must be pinned on the back of their jerseys.

9. Any contestant not reporting to the starting official at the last call for any event shall be scratched for that event. Responsibility rests with the contestant.

10. All discus throws, preliminary and final, will be made from a concrete surface.



Named for a World War I hero who is justifiably included among MSU's all-time athletic greats, Dornblaser Stadium is host to track and field events. Here the Grizzlies play to 10,000 fans Saturday afternoons in the fall.

# Track and Field Program

Unless specifically indicated otherwise in the program, preliminary races shall be run in the following order: Class C, B, A and AA. Where no more than ten contestants from any class are entered in a running event, no trials or preliminary heats shall be run.

## Friday, May 20, 1:10 P.M.

### Parade of Athletes

Trials, 100-yard dash—Classes B and C

Trials, 120 yard high hurdles—Classes B and C

Trials, 440 yard run—Classes B and C

Final, Mile Run—Classes B and C

Trials, 220 yard dash—Classes B and C

Final, 880 yard run—Classes AA and A

Trials, 180 yard low hurdles—Classes B and C

Trials, 880 yard relays—Classes B and C

Finals in the Class B and Class C pole vault and in the Class AA and Class A high jump will be held concurrently with the running events.

Trials in the following field events will be held with participants competing in flights. Class B and Class C discus throw (on practice field north of Dornblaser Field), Class AA and Class A shotput, Class B and Class C javelin throw and Class AA and Class A broadjump (all on Dornblaser field), followed by Class B and Class C shotput, Class AA and Class A javelin throw, Class B and Class C broadjump (all on Dornblaser Field), and Class AA and Class A discus throw (on practice field north of Dornblaser field).

## Saturday, May 21, 1 P.M.

Finals, 100 yard dash

Finals, 120 yard high hurdles

Finals, 440 yard run

Final, Mile run—Class AA

Final, Mile run—Class A

Final, 880 yard run—Class B

Final, 880 yard run—Class C

Finals, 220 yard dash

Finals, 180 yard low hurdles

Finals, 880 yard relays. (All relays will be run in lanes with staggered starts and on comparative time basis if there are more than five teams in any class.)

Finals of the Class AA and Class A polevault and Class B and Class C high jump will be held concurrently with the running events.

Finals of the weight throwing events and the broad-jump will be as follows: Class AA broad jump, Class A shot put, and Class B and Class C discus throw; followed by Class AA shot put, Class A discus throw, and Class B and Class C broad jump; followed by Class AA discus throw, Class A broad jump, and Class B and Class C shot put; followed in order by the Class B and Class C, Class A, and Class AA javelin throw.

The Committee reserves the right to qualify more contestants than the above calls for, and to eliminate any semi-final round to be unnecessary.

All 440, 880 and mile races will be started at the head of the straightaway (thus eliminating the first turn).



# *Golf and Tennis Tournament*

**1960 Girls' Interscholastic Golf Champion:** Joan Dixon, Missoula.

**1960 Boys' Interscholastic Golf Champion:** Jim Roberts, Billings.

**1960 Boys' Interscholastic Golf Team Champion:** Whitefish.

**1960 Girls' Interscholastic Tennis Champion:** Singles, Maureen Hall, Billings Central; Doubles, Mary Lou Hartsell and Marilyn Brown, Missoula County High School.

**1960 Boys' Interscholastic Tennis Champion:** Singles, Dick Hurd, Great High School; Doubles, Randy Jacobs and Don Hoffman, Missoula County High School.

## Golf and Tennis Rules

Tournaments are arranged for both boys and girls. Entries must be sent on the regular entry blanks. The committee will pay no expenses of the entrants in these tournaments.

Because results of the last few years indicate that girls are not physically capable of participating in both singles and doubles this early in the season, the committee has voted to restrict girls to either the singles or the doubles.

Coaches may submit as many names as they wish on the entry blank, but no more than two from any one school may compete in the girls' golf tournament and not more than four in the boys' golf tournament. No more than two may compete in the girls' tennis singles and the boys' singles. In tennis doubles, one boys' team and one girls' team from each school may be entered. Boys entered in the tennis singles may also enter in the doubles. Choice of participants for each event will be made at the opening of that event.

**GOLF. Boys' tournament.** A 36 hole medal-play tournament, 18 holes on Friday morning and 18 holes on Saturday morning, starting at 6:30 a.m. on the Missoula Country Club golf course. Schools entering four men in golf may compete for the four-man trophy.

**Girls' tournament.** An 18-hole medal-play tournament, 9 holes on Friday morning and 9 holes on Saturday morning, starting at 8 a.m. at the Missoula Country Club golf course.

**TENNIS. Boys' tournament.** Singles and doubles Friday, 8 a.m. to 7 p.m. and Saturday, 8 a.m. to 7 p.m. Men's Gymnasium and University courts.

**Girls' tournament.** Singles and doubles, Friday, 8 a.m. to 7 p.m. and Saturday, 8 a.m. to 7 p.m. Women's Gymnasium and University Courts.

There will be one single elimination tournament in doubles for boys and one for girls.

Pending approval by the United States Lawn Tennis Association, the Interscholastic tennis tournament will be sanctioned by that organization.

The Montana High School Association prohibits member schools from participating in any inter-school contest or activity, or practicing for such contest or activity, on a Sunday.

Awards will be given to first, second, and third place winners on boys' golf; first and second place winners in both boys' and girls' tennis. A trophy will be awarded to the four-man golf team with the lowest total.

The Missoula Country Club is located south of the city on Highway 93 towards Hamilton near Fort Missoula. The turn off is clearly marked.

The University Tennis Courts are located north of Main Hall adjacent to the football practice field.

# *Interscholastic Editorial Association*

## **All-State Newspaper Ratings, 1960**

**Iniwa**, Great Falls High School  
**Konah**, Missoula County High School, Missoula  
**Laurel Leaves**, Laurel High School  
**Centralite**, Butte Central High School  
**Rosarian**, Rosary High School, Bozeman  
**Lariat**, Augusta High School  
**Skyline**, Charlo High School  
**Hi-Lite**, Columbus High School  
**Evergreen**, Lincoln County High School, Eureka  
**Broadcaster**, St. Ignatius High School  
**Refiner**, Sunburst High School  
**Cliff Dweller**, Thompson Falls High School  
**Belfry Echoes**, Belfry High School  
**Cougar**, Custer High School  
**Static**, Ennis High School  
**Mission Bells**, Mission High School, Hays  
**News**, East Junior High School, Great Falls  
**Western Star**, West Junior High School, Great Falls

Sigma Delta Chi, professional journalism fraternity, will award six trophies for writing in three divisions: news feature, editorial and sports. Individual trophies will be awarded to contestants placing first in each division, and larger traveling trophies will be awarded to the schools from which the winning writers are delegates. A school winning one of these trophies three times will gain permanent possession.

Theta Sigma Phi, professional journalism fraternity for women, will make two "outstanding journalist awards" to the girls selected for having shown most notable achievements in scholarship, journalism activities and other high school activities. Nominees will be selected by high school publication staffs and advisers.

The Montana Interscholastic Editorial Association will meet in the Journalism building at 9 a.m. Friday. Each member school is entitled to two voting delegates. Delegates must be listed on the school's entry blank.

Annual newspaper ratings will be announced at the close of the Friday morning session. Awards in this contest will be made upon the basis of the following classifications:

- A—Enrollment 500 or more
- B—Enrollment 250 to 500
- C—Enrollment 100 to 250
- D—Enrollment under 100
- E—Inserts or departments of community newspapers
- F—Junior high school

Papers in each class will be rated All-State, Superior, Good or Fair.

For additional information, write to Prof. Edward B. Dugan, School of Journalism, Montana State University, Missoula, Montana.



# Points in Track a

## CLASS AA

|                    |        |                     |        |
|--------------------|--------|---------------------|--------|
| Helena .....       | 45     | Great Falls .....   | 17 6/7 |
| Billings .....     | 31 1/3 | Missoula .....      | 17     |
| Park .....         | 30 5/7 | Gallatin .....      | 11 6/7 |
| Butte Public ..... | 24 6/7 | Butte Central ..... | 11 1/3 |
| Flathead .....     | 24     | Anaconda .....      | 9 4/21 |

## CLASS A

|                        |        |                       |       |
|------------------------|--------|-----------------------|-------|
| Hardin .....           | 60     | Sidney .....          | 11    |
| Custer Co. ....        | 19     | Great Falls Central.. | 7     |
| Dawson .....           | 38     | Glasgow .....         | 4 1/2 |
| Billings Central ..... | 28     | Fergus Co. ....       | 0     |
| Laurel .....           | 24 1/2 | Havre .....           | 0     |

## CLASS B

|                      |        |                      |       |
|----------------------|--------|----------------------|-------|
| Loyola (Missoula) .. | 33 1/4 | Mission .....        | 10    |
| Libby .....          | 18 3/4 | Shelby .....         | 9     |
| Whitefish .....      | 16     | Absarokee .....      | 8     |
| Choteau .....        | 15 1/2 | Beaverhead .....     | 8     |
| Fairfield .....      | 14     | Fairview .....       | 7     |
| Red Lodge .....      | 14     | Helena Cathedral ... | 6 3/4 |
| Hamilton .....       | 13 3/4 | Ronan .....          | 6     |
| Polson .....         | 13 3/4 | Harlowton .....      | 4 3/4 |

## Best Individual

Class AA: Mike Huggins, Flathead; Larry Questad, Park, 16.

Class A: Tate, Hardin, 15½.

Class B: Yeager, Choteau, 12.

Class C: Ken Grazier, Plains, 16½.

Interscholastic meet records are the best marks established AA, A, B, or C school contestants.

## Montana Interscholasti

| Event                     | Record         |
|---------------------------|----------------|
| 100 yard dash.....        | 9.8 sec.       |
| 220 yard dash.....        | 21.6 sec.      |
| 440 yard dash.....        | 49.9 sec.      |
| 880 yard dash.....        | 1:58.7         |
| Mile run.....             | 4:27.6         |
| High hurdles.....         | 14.8 sec.      |
| 180 yard low hurdles..... | 19.6 sec.      |
| Pole vault .....          | 12 ft. 10 in.  |
| Javelin throw.....        | 203 ft. 8¾ in. |
| Shot put.....             | 56 ft. 6¾ in.  |
| Discus throw.....         | 165 ft.        |
| High jump.....            | 6 ft. 6½ in.   |
| Broad jump.....           | 22 ft. 8½ in.  |
| Half mile relay.....      | 1:31.1         |

# Field Meet, 1960

|                     |   |
|---------------------|---|
| Anaconda Central .. | 4 |
| Forsyth .....       | 3 |
| Stevensville .....  | 3 |
| Sunburst .....      | 3 |
| Cut Bank .....      | 2 |
| Poplar .....        | 2 |
| Wolf Point .....    | 2 |

|                   |     |
|-------------------|-----|
| Eureka .....      | 2   |
| Lodge Grass ..... | 1   |
| Plentywood .....  | 1   |
| Scobey .....      | 1   |
| Malta .....       | 3/4 |
| Powell Co. ....   | 3/4 |

## CLASS C

|                     |       |
|---------------------|-------|
| Plains .....        | 30    |
| Corvallis .....     | 22    |
| Troy .....          | 7     |
| Holy Rosary .....   | 14    |
| Townsend .....      | 14    |
| Augusta .....       | 12    |
| Colstrip .....      | 10    |
| Sheridan .....      | 10    |
| Terry .....         | 8     |
| Simms .....         | 7     |
| Broadview .....     | 6 1/5 |
| Denton .....        | 6 1/5 |
| White Sulphur ..... | 6     |
| Big Timber .....    | 6     |
| Ennis .....         | 6     |
| Edgar .....         | 4     |

|                   |       |
|-------------------|-------|
| Savage .....      | 4     |
| Superior .....    | 4     |
| Victor .....      | 4     |
| Belgrade .....    | 3 1/5 |
| Cascade .....     | 3 1/5 |
| Wilsall .....     | 3 1/5 |
| Chester .....     | 3     |
| Darby .....       | 3     |
| Inverness .....   | 3     |
| Power .....       | 3     |
| Arlee .....       | 2 1/2 |
| Hot Springs ..... | 2 1/2 |
| Centerville ..... | 2     |
| Custer .....      | 2     |
| St. Regis .....   | 2     |
| Three Forks ..... | 1     |

## formers, 1960

event in the meet regardless of whether established by Class

## Track and Field Records

| Holder  | Year |
|---|------|
| R. O'Malley, Butte .....                            | 1933 |
| R. O'Malley, Butte .....                            | 1933 |
| F. Damaskos, Missoula .....                         | 1957 |
| R. Merwin, Missoula .....                           | 1956 |
| J. Kittell, Missoula .....                          | 1945 |
| D. McAuliffe, Butte .....                           | 1938 |
| C. Orr, Missoula .....                              | 1953 |
| W. Custer, Missoula .....                           | 1930 |
| Ken Christison, Flathead .....                      | 1960 |
| Jerry Fitzsimmons, Butte .....                      | 1960 |
| Nate Edington, Butte .....                          | 1960 |
| Mike Huggins, Flathead .....                        | 1960 |
| K. Nelson, Missoula .....                           | 1955 |
| (Boone, Lewis, Danielson, Drinville), Missoula..... | 1958 |

# Speech Events

**Sweepstakes Winner, 1960:** Great Falls Central High School.

A trophy is awarded by the Montana High School Association to the school scoring the greatest number of points in all events.

## Declamation

**Finalists for 1960:** Oratorical, 1st—Barbara Johnstone, Missoula H.S. 2nd—Dick Denda, Billings H.S. 3rd—Penny McGinnis, Missoula H.S.

Dramatic, 1st—Bob Dewey, Great Falls Central H.S. 2nd—Karen Kinkard, Great Falls H.S. 3rd—Corrine Yardley, Great Falls Central H.S.

Humorous, 1st—Melinda Wilson, Billings H.S. 2nd—Gail Jewett, Flathead H.S., Kalispell. 3rd—Jane Nelson, Missoula H.S.

## Rules Governing Declamatory Contest

(See General Rules, Page 3)

1. Declamations will be classified as Dramatic (or Serious), Humorous, and Oratorical. Separate contests shall be held for each of these three divisions. Speakers may be either boys or girls. The declamations must be presented to the realm of the audience using suggestion of action rather than complete portrayal of physical activity. No properties or costumes shall be allowed.

a. Dramatic declamation shall include monologues, narratives, poetry, cuttings from plays or other literature, in which the dominant motive appeals are of a serious or dramatic nature.

b. Humorous declamations shall include monologues, narratives, poetry, cuttings from plays or other literature, in which the dominant motive appeals are of a humorous nature.

c. Oratorical declamations shall include only those speeches which have been originally presented by the author as a speech in a speaker-audience situation. (Imaginary speeches in dramas and plays are not included in this classification.)

2. All contestants in the state tournament must have ranked among the first five winners in his division of declamation in the district tournament. Thus five dramatic declaimers, five humorous declaimers, and five oratorical declaimers will represent each district.

3. There will be two preliminary, a semi-final, and a final contest.



4. A general assembly of contestants, coaches, and judges will be held in Room 104 of the Liberal Arts Building, May 19, at 8:00 a.m., where instructions will be given and contestants sent to their different divisions.

5. Speakers from each division will participate in the final event Friday evening, and to each of them a medal will be awarded. Semi-finalists will receive ribbons.

6. No selection may take longer than 10 minutes to deliver; contestants exceeding this limit will not be considered in choosing winners.

7. Judges shall base their judgment on the speaker's ability to communicate his intellectual and emotional understanding and appreciation of the writing, and his impartation of it to his hearers.

8. No declamation (oratorical, serious or humorous) which has been given in the finals of the year immediately preceding shall be permitted to be used in the finals of the declamation contest. The winning declamations for 1960 were: "Why Are We Here?", by William J. Mimms; "Lidice," by Wendell Wilkie; "The Snow Goose," by Paul Gallico; "Coriolan," by T. S. Elliot; "The Cat Came Back," by Leota H. Black; and "My Fair Lady," by Frederick Loewe.

## Debate

**Winners for 1960:** 1st—Jack Mudd, Jim Pierson, Great Falls Central H.S. 2nd—Glen Kilpatrick, Dave McNicol, Great Falls Public H.S. 3rd—(tie) Pam Bompert, Jerry Cooper, Helena H.S.; Joe Almas, Bruce Brothers, Havre H.S.

**Question for 1961:** "Resolved: That the United Nations should be significantly strengthened."

## Provisions for Debate Tournament

1. For the 1960-61 school year, on a trial basis, the following form of the Oregon Style of debating shall be used in the district and state tournaments:

|                                   |        |
|-----------------------------------|--------|
| First Affirmative Speech .....    | 7 min. |
| Cross-exam. by Second Neg. ....   | 3 min. |
| First Negative Speech .....       | 7 min. |
| Cross-exam. by First Aff. ....    | 3 min. |
| Second Affirmative Speech .....   | 7 min. |
| Cross-exam. by First Neg. ....    | 3 min. |
| Second Negative Speech .....      | 7 min. |
| Cross-exam. by Second Aff. ....   | 3 min. |
| First Negative, Rebuttal .....    | 4 min. |
| First Affirmative, Rebuttal ..... | 4 min. |
| Second Negative, Summary .....    | 4 min. |
| Second Affirmative, Summary ..... | 4 min. |

2. The top eight schools from each district shall be allowed to enter the State Tournament.

3. The tournament will begin Friday at 10:00 a.m. Coaches of all teams will meet in the Liberal Arts Hall for the pairings. Three rounds will be held Friday, with all teams debating. The state championship debate will be in Room 104, Liberal Arts Hall, at 4:30 p.m., Saturday.

4. All debate teams shall be judged as Superior, Excellent, Good, Fair, or Poor. In any one debate the two participating teams shall be awarded different ratings. For elimination and final rounds, the judgments of "Won" and "Lost," shall be awarded.

5. In the State Tournament, after three rounds, in order to determine the debate teams that participate in the elimination rounds, the sixteen or fewer teams with the highest won-lost record, plus those teams with the highest quality point ratings to make up a total of 16 teams, will be selected. In the elimination rounds, one loss shall eliminate.

6. Names of all debaters and coaches must be listed on the entry blank which will be sent to school principals on or about April 22. The names of all entries must be in the hands of the Interscholastic committee by May 6.

7. Subject to change by mutual agreement of participants and coaches, all debates shall be conducted in accordance with the plan provided for in the league constitution.

## Extemporaneous Speaking

**Winners for 1960:** 1st—Mona Lissa, Billings Sr. H.S.  
2nd—Jay Longpre, Loyola H.S., Missoula. 3rd—Lorel Sjoblem, Butte Girls' Central H.S.

## Provisions for the Extemporaneous Speaking Contest

1. One hour before speaking, the contestant will draw by lot three specific topics based on one of the following general subjects:

- a. International Relations, 1960-61.
- b. The U.S. National Economy.
- c. U.S. Political Problems.

The specific speech topics will have been chosen from materials appearing in the January, February, March and April issues of Time, Scholastic, Readers Digest, and Newsweek magazines.

2. The contestant will then choose one of the three as the subject for his speech.

3. The contestant will have one hour for the preparation of his speech.

4. At the scheduled time for beginning the contest, the contestants will speak according to the speaking order determined by lot.

5. Maximum time limit for speaking will be 8 minutes. Minimum time limit will be 5 minutes.

6. The contest will begin Friday at 8:00 a.m. Drawings for topics will be in the Liberal Arts Hall, 1st floor. Contestants will take part in three preliminary rounds. The highest ranking six will speak in the finals.

7. All extemporaneous speakers in the state tournament must have ranked among the first five winning extemporaneous speakers in their district tournament.

## Original Oratory

**Winners of 1960:** 1st—Bob Casne, Flathead Co. H.S., Kalispell. 2nd—Dennis Nelson, Loyola H.S., Missoula. 3rd—Don Torgenrud, Great Falls Public H.S.

## Provisions for Oratory Tournament

1. Orations must be written originally by the students delivering them. The maximum time limit is 10 minutes with no minimum. Sectioning and speaking order will be determined by lot.

2. The tournaments will begin Friday at 8:00 a.m. Contestants and coaches will meet in the Liberal Arts Hall for instructions. Contestants will take part in three preliminary rounds. The finalists will be chosen to speak in the final program.

3. All orators in the state tournament must have ranked among the first five winning orators in their district tournament.

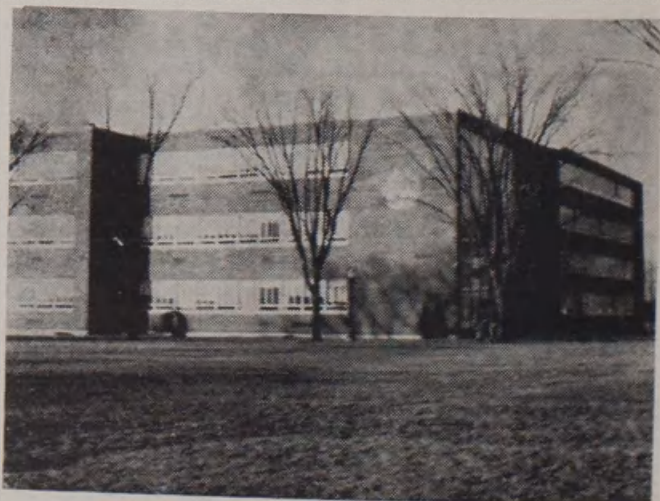
4. Other regulations relating to Original Oratory will be found in the By-Laws for Oratory of the Montana High School Speech League.



# Oral Interpretation of Literature

## Provisions for Oral Interpretation Contest

1. In the Oral Interpretation of Literature, all contestants shall participate in three rounds, one round each in the reading of Prose, Poetry, and Drama.
  - a. Round I. The reading of Prose shall exclude all selections of poetry and selections from drama.
  - b. Round II. In the reading of Poetry, the contestant shall read from one or more selections of poetry which support a single theme.
  - c. Round III. In the reading of Drama, the contestant must read from a recognized published play in which two or more characters are represented.
2. For all elimination rounds and finals rounds, all contestants shall re-read their selections of poetry from Round II.
3. The manuscript must be held in hand during the delivery of the selections, and the contestants must give the illusion of reading from the manuscript.
4. Ten minutes shall be the maximum time limit in each round. No minimum.



Now being expanded, the Liberal Arts Building includes faculty office space as well as modern classrooms. Speech events will be held in this building on the first floor.

## *Of Interest to You . . .*

Several University facilities including the bowling alleys and a recreation room in the basement of the Women's Center, the swimming pool, the Grill Room in the Lodge and the student book store are available to Interscholastic participants and visitors.

Thursday night, May 18, the annual intra-squad spring football game climaxing spring training will be held on Dornblaser Field, the site of the track and field events. The afternoon of the 18th the Grizzlies will entertain Utah State University in a doubleheader at Campbell Park, MSU's home baseball diamond southwest of the campus.

The several academic disciplines invite your inquiries and encourage participants and visitors to visit the physical facilities of the campus.

A spacious parking area is located directly across from the Field House, convenient to all Interscholastic activities. The University encourages automobiles to be parked here to facilitate traffic movement and to prevent accidents.

Much of the news coverage of this and every Interscholastic Meet is in the capable hands of journalism students who volunteer their talents and time. Sigma Delta Chi, professional journalism fraternity, and Theta Sigma Phi, professional women's journalism fraternity, are both responsible for organizing and distributing news pertaining to the Interscholastic Meet before, during and following all events.

Winning contestants will be photographed when presented with their awards. Photographs will be taken of all race finishes to insure accuracy in picking winners.

Several other activities will be offered contestants and visitors at the Interscholastic and will be announced by mail, during the events and at the registration table.

# *Little Theatre Festival*

## **Winners in 1960**

### **Winning Plays**

**"Medea"** by Euripides (translation by Robinson Jeffers)  
Mr. Francis H. Fitzpatrick, Director; Columbia Falls High School.

**"The Twelve Pound Look"** by J. M. Barrie; Mr. Bruce Cusker, Director; Conrad High School.

### **Plays In University Theatre**

#### **Best Actor—**

Eric Fiedler as Sam Smith in "Shall We Join the Ladies,"  
Missoula County High School.

#### **Best Actress—**

Carol Woster as Medea in "Medea," Columbia Falls High School.

#### **Best Bit Actor—**

Edward J. Thompson as Isaiah Jones in "A Husband for Breakfast," Bozeman High School.

#### **Best Bit Actress—**

Lyla Schmautz as Mrs. Levi in "The Matchmaker," Havre Senior High School.

#### **Best Character Actor—**

Bill Kirkendall as Robert in "Antic Spring," Billings High School.

#### **Best Character Actress—**

Pat Cavanaugh as Katherine in "When Shakespeare's Ladies Meet," Girls' Central High School (Butte).

### **Plays In Masquer Theatre**

#### **Best Actor—**

James Baker as Sir Harry Simms in "The Twelve Pound Look," Conrad High School.

#### **Best Actress—**

Mary Lou Tudor as Mrs. Popov in "The Boor," Park County High School.



**Best Bit Actor—**

Robert McLaughlin as the Bad Man in "Man in the Bowler Hat," Fergus County High School.

**Best Bit Actress—**

Lynne Burnett as Cleopatra in "When Shakespeare's Ladies Meet," Hamilton High School.

**Best Character Actor—**

Sam Fox as Le Bossu in "Infanta," Ryegate High School.

**Best Character Actress—**

Jo Ann Hollenberg as Mrs. Moore in "Three on a Bench," Shelby High School.

**Winner of Roberts Memorial Scholarship—**

Ronald James Stevens, Missoula County High School.

**Winner of Award of Merit to a Director—**

Mrs. Doris Marshall, Helena High School.

The Little Theatre Festival is scheduled for two days this year: Friday, May 19, and Saturday, May 20. Two theaters, both on the campus — The University Theater and the Masquer Theater — will be used to accommodate the productions. Plays will run concurrently in both theaters beginning at 8 a.m. Friday.

One-act plays or cuttings from larger plays, neither exceeding 35 minutes in playing time nor being less than 20 minutes and involving not more than one set of scenery, may be entered. Adjudicators will comment on all festival entrants. One play from each theater will be selected for presentation at the Little Theater Festival program on Saturday, May 20, at 8 p.m. in the University Theater. Plays will be selected by the adjudicators on the basis of imagination, excellence of acting and general quality of production. Identical medals will be awarded in each theater for best actor, best actress, best supporting actor, best supporting actress, best character actor and best character actress.

There will be a meeting of all high school drama directors on Saturday, May 20 from 10 a.m. to 12 noon in the Masquer theater.

# *Prizes and Awards*

## **Track and Field**

1. The Missoula Mercantile, the Missoula Rotary Club, Lions Club and Kiwanis Club each will present a trophy for the meet, one to be given to the winner in each class. These trophies are awarded annually, and are to be held by the school for one year. They will be awarded permanently in 1962 to the school in each class which shall have scored the greatest number of points in five meets.

2. A permanent trophy will be presented by the Interscholastic committee to the school scoring the most points in each classification.

3. Gold, silver and bronze medals, suitably engraved, will be awarded to winners of first, second, third, fourth and fifth places in all track and field events for AA, A, B and C schools.

4. The University will give an individual prize to the contestant winning the greatest number of points in each division.

## **Golf and Tennis**

5. In the boys' golf tournament, gold, silver, and bronze medals will be awarded to the winners of first, second and third places, respectively. The Interscholastic Committee will give a trophy to the winning four-man golf team. In the girls' golf tournament, a gold medal will be awarded to the first place winner and a silver medal will go to the second place winner. In both the boys' and girls' tennis tournaments, three gold medals and three silver medals will be awarded, one to each winner and each runner-up in the singles and doubles contests.

## **Declamation and Little Theatre**

6. Citations will be made for excellencies in the various divisions of declamation. In debate, original oratory, and extemporaneous speaking medals are awarded. Medals are also awarded in the several categories of judging in the Little Theater Festival.

## **Journalism**

7. Sigma Delta Chi, professional journalism fraternity, will award six trophies in three divisions; news feature, editorial and sports writing. Individual trophies will be awarded to contestants placing first in each division, and larger traveling trophies will be awarded to the schools from which the winning writers are delegates. A school winning one of these trophies three times will gain permanent possession.

# *Program of the Meet*

Friday, May 19

- 6:30 a.m.—BOYS' GOLF. All contestants meet in front of the Lodge for transportation to Missoula Country Club course.
- 7:30 a.m.—GIRLS' GOLF. All contestants meet in front of the Lodge for transportation to Missoula Country Club course.
- 8:00 a.m.—BOYS' TENNIS. All participants report to Men's Gymnasium.
- 8:00 a.m.—EXTEMPORANEOUS SPEAKING. Drawings for topics in Liberal Arts hall, 1st floor.
- 8:00 a.m.—ORIGINAL ORATORY. Round I. Assignments in Liberal Arts hall, 1st floor.
- 8:00 a.m.—DECLAMATION and ORAL INTERPRETATION OF LITERATURE. Meeting of all contestants in Liberal Arts Hall, 1st floor.
- 8:00 a.m.—LITTLE THEATER FESTIVAL. University Theater and Masquer Theater.
- 8:30 a.m.—BOYS' TENNIS. Singles and doubles. University Courts.
- 8:30 a.m.—GIRLS' TENNIS. All contestants report to Women's Center.
- 9:00 a.m.—GIRLS' TENNIS. Singles and doubles. University Courts.
- 9:00 a.m.—MEETING OF ATHLETIC REPRESENTATIVES of all schools at Men's Gym for distribution of contestant numbers.
- 9:00 a.m.—ORIGINAL ORATORY. Round II.
- 9:00 a.m.—EXTEMPORANEOUS SPEAKING. Round I.
- 9:00 a.m.—INTERSCHOLASTIC EDITORIAL ASSOCIATION. Journalism Building.
- 10:00 a.m.—HIGH SCHOOL DIRECTORS MEETING. Masquer Theater.
- 10:00 a.m.—DEBATE. Round I. Assignments in Liberal Arts hall, 1st floor.
- 10:00 a.m.—DECLAMATION. Round II.
- 10:00 a.m.—ORAL INTERPRETATION, Round II.
- 11:00 a.m.—ORIGINAL ORATORY, Round III (semi-finals).
- 1:00 p.m.—DEBATE. Round II.
- 1:00 p.m.—ORAL INTERPRETATION, Round III.
- 1:00 p.m.—ROTC REVIEW.
- 1:10 p.m.—TRACK AND FIELD MEET. Parade of Athletes at Dornblaser Field.



- 1:30 p.m.—LITTLE THEATER FESTIVAL. University Theater and Masquer Theater.
- 2:00 p.m.—EXTEMPORANEOUS SPEAKING. Drawings for topics in Liberal Arts hall, 1st floor.
- 2:00 p.m.—DECLAMATION. Round III.
- 3:00 p.m.—EXTEMPORANEOUS SPEAKING. Round II.
- 3:00 p.m.—ORAL INTERPRETATION. Semi-finals.
- 4:00 p.m.—DEBATE. Round III.
- 7:15 p.m.—SINGING ON THE STEPS. University Hall.
- 8:00 p.m.—DECLAMATION, ORAL INTERPRETATION, and ORIGINAL ORATOR. Finals, University Theater.

### Saturday, May 20

- 6:30 a.m.—BOYS' GOLF. All contestants meet in front of the Lodge for transportation to Missoula Country Club course.
- 7:30 a.m.—GIRLS' GOLF. All contestants meet in front of the Lodge for transportation to Missoula Country Club course.
- 8:00 a.m.—BOYS' TENNIS. All participants report to Men's Gymnasium.
- 8:00 a.m.—GIRLS' TENNIS. All participants report to Women's Center.
- 8:00 a.m.—DEBATE. Round IV.
- 8:00 a.m.—LITTLE THEATER FESTIVAL. University Theater and Masquer Theater.
- 8:30 a.m.—BOYS' TENNIS. Singles and doubles. University Courts.
- 9:00 a.m.—GIRLS' TENNIS. Singles and doubles. University Courts.
- 9:00 a.m.—EXTEMPORANEOUS SPEAKING. Drawing for topics in Liberal Arts hall, 1st floor.
- 10:00 a.m.—EXTEMPORANEOUS SPEAKING. Round III.
- 10:30 a.m.—DEBATE. Round V. (Quarter-finals).
- 12:00 Noon—LUNCHEON MEETING of teachers of English, Drama and Speech.
- 1:15 p.m.—TRACK AND FIELD MEET. Finals.
- 1:30 p.m.—LITTLE THEATER FESTIVAL. University Theater and Masquer Theater.
- 1:30 p.m.—DEBATE. Semi-finals.
- 2:00 p.m.—EXTEMPORANEOUS SPEAKING. Drawing for topics in Liberal Arts hall, 1st floor.
- 3:00 p.m.—EXTEMPORANEOUS SPEAKING. Finals.
- 4:30 p.m.—DEBATE. Finals.
- 8:00 p.m.—LITTLE THEATER FESTIVAL. University Theater.
- 8:00 p.m.—AWARDING OF PRIZES. University Theater.