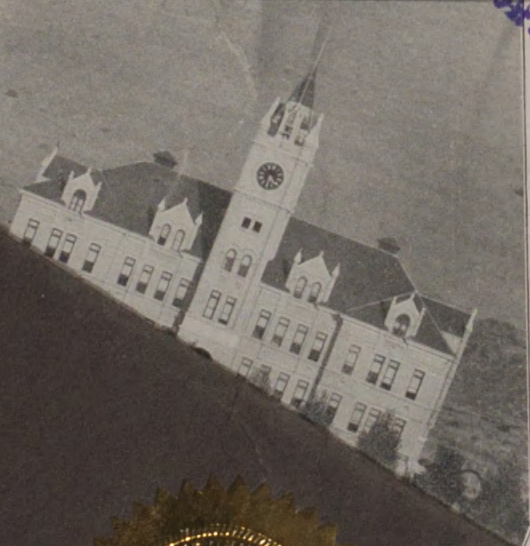


Programs — track — meet (Interscholastic)

# Souvenir Program

706  
97-2

LIBRARY  
University of Montana  
Missoula



Third Annual

## Interscholastic Meet

Montana Field

University of Montana Campus

Missoula, Montana, May 16, 17 and 18

1906

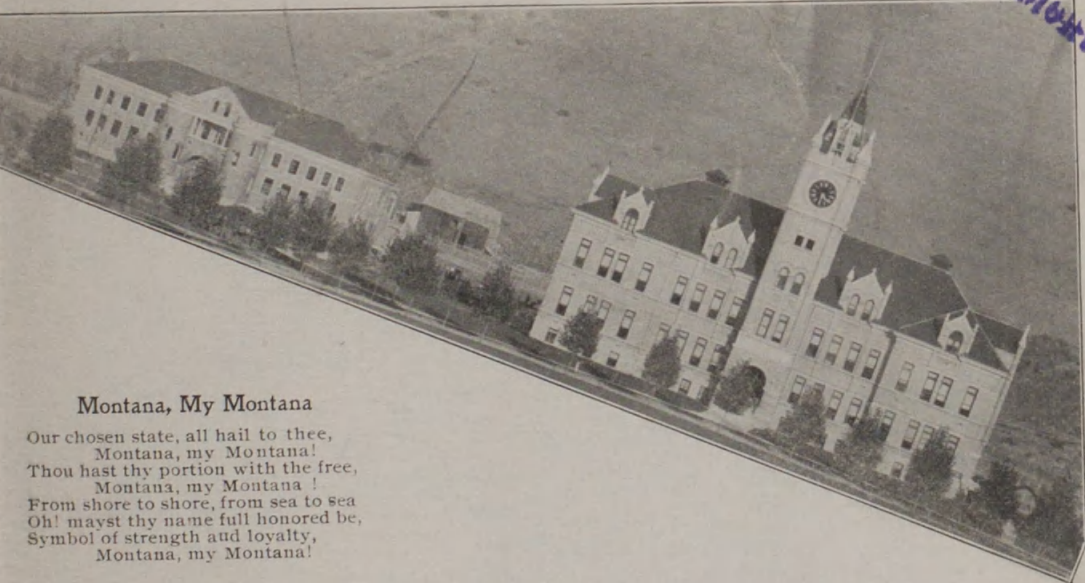




Programs - Track meet.  
(Interscholastic)

3d. (1906) cop. 2

LIBRARY  
University of Montana



Montana, My Montana

Our chosen state, all hail to thee,  
Montana, my Montana!  
Thou hast thy portion with the free,  
Montana, my Montana!  
From shore to shore, from sea to sea  
Oh! mayst thy name full honored be,  
Symbol of strength and loyalty,  
Montana, my Montana!



My University

I love every inch of her campus so wide,  
Each elm in her shady grove,  
I love every man in my college, dear.  
Each maid in the Hall I love.

I love each rock on her wind swept hill  
Which faces the setting sun.  
The copper and the gold  
bears the love that I hold  
My University.

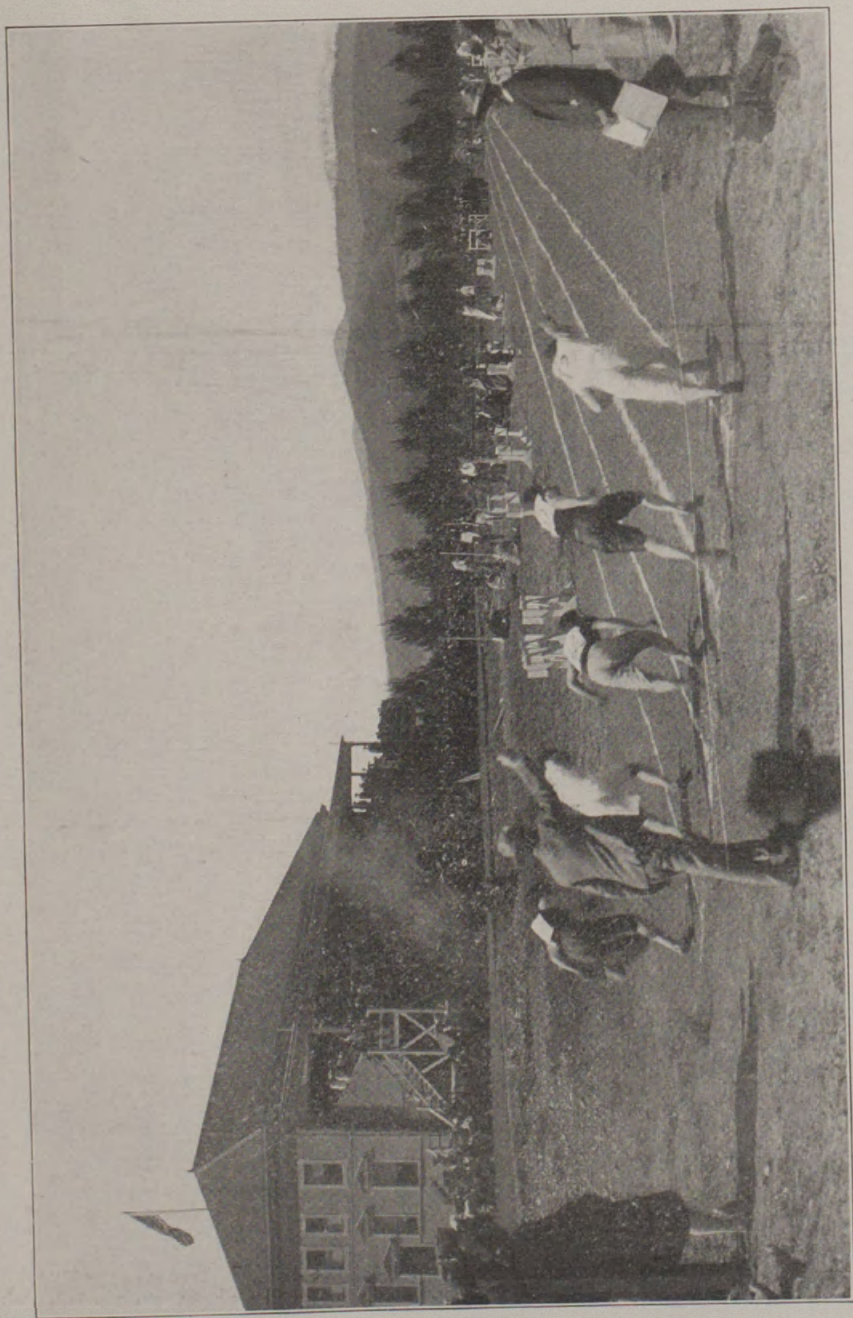




POLE VAULT



START OF ONE-HALF MILE RUN



HEAT IN 100 YARD DASH



## Historical Sketch of Interscholastic High School Meet



ONTANA may well be proud of her athletic career and her annual gathering together on Montana field and Rostrum.

In the fall of 1903 definite plans were outlined by the President and Faculty of the University of Montana for carrying out the great undertaking by which all the High Schools of the state with their scores of students might annually meet in friendly contest on the campus of the University of Montana. In May of 1904 the first meet took place and was so successful that the promoters of the scheme felt more than gratified over the result.

As outlined in their first announcement the promoters of the great High School meet have undertaken to hold the Interscholastic Meet annually on the University campus a courtesy due to the University as first inaugurator of the scheme.

To this end various cups have been offered annually to be competed for on Montana field alone. The big Spaulding cup, presented by Spaulding Bros., is to be competed for annually for five years. The High School winning the most number of points during this time is to have permanent possession. Meanwhile the winning team of each respective meet during the five years has the privilege of keeping the cup during the following year, with colors entwined around it.

The big Missoula Mercantile cup, presented by the hardware department of the Missoula Mercantile Company is to be given outright each year to the High School winning the meet.

The Victor cup offered by the Whitney Sporting Co., is given to the High School winning the most number of points in the relay during a competition of three years. Similar to the Spaulding cup, the High School winning the relay of each respective year has the privilege of holding it for the year following, with their colors entwined.

The loving cup for individual championship is offered by the University, to be given outright each year to the individual champion of the meet.

Aside from the cups there are fifteen gold, fifteen silver and fifteen bronze medals given for first, second and third prizes, in the fifteen contested events of the meet. As perhaps may have been surmised, the purpose of the Inter Scholastic Meet is two-fold—to heighten athletic development among the High School students and to develop them along the lines of public speaking. Thus far the declamatory contest has met with unprecedented success. In fact in last year's meet as well as this year's

there are slightly larger number of High Schools competing in the declamatory contest than for athletic honors. These have thus far been hotly contested both in the local try out contest and especially so in the final contest in University Hall.

The records made thus far have been remarkably good. Several are, however, expected to go crashing downwards, as many of the athletic giants of last year are again present with us. Horn of Anaconda, with his pleasant smile and "winning ways" of last year is down with ten expert assistants from his school. Pierce of Butte, who showed such remarkable form in the mile and two mile last year and lowered both records, is here again to battle for his high school. Dinsmore and Dorman, the two twin athletes from Missoula High School are expected to show the uninitiated many new pointers in climbing the tall sticks and fancy leaps in the broad jump. It is hard to prophecy who will be individual champion as many surprises are looked for.

The relay race is always interesting. Vague rumors are afloat that surprises are to be found here. It is reported several High Schools are saving their strength to capture this coveted trophy. The following is a summary by points of last year's contest. The problem is, what shall be the summary this year?

#### SUMMARY BY POINTS.

|                 |    |
|-----------------|----|
| Butte.....      | 27 |
| Missoula.....   | 25 |
| Anaconda.....   | 22 |
| Flathead.....   | 15 |
| Billings.....   | 10 |
| Broadwater..... | 8  |
| Park.....       | 8  |
| Fergus.....     | 6  |
| Granite.....    | 4  |
| Helena.....     | 1  |



JOE HORN

Individual champion 1905, winning single-handed 22 points, taking third place for his school.



# High Schools That Are to Compete

## Anaconda High School



EMMETT RYAN  
Captain Teton High School Team

The Anaconda High School offers four courses of study: classical, scientific, English and commercial. It has six teachers including the principal and an enrollment of 108. It has a well equipped chemical laboratory and commercial rooms.

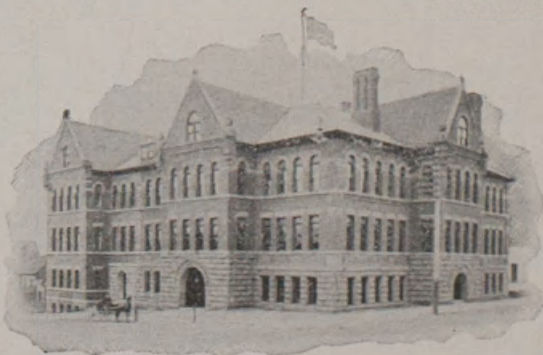
Great interest is taken in athletics by the school. The basket ball team twice defeated one claimant of state championship honors and tied with another. Last year Joe Horn captured the prize cup for the best individual score at the Inter-scholastic Meet.

## Butte High School

The Butte High School Track team is under the captaincy of Clement Crowley, '06. The school has an enrollment of seven hundred pupils and a teaching corps of twenty-eight members. It occupies a spacious building containing over forty rooms, and is the largest secondary institution of learning in Montana.

For many years the Butte High School athletic teams have won laurels, the school at present defending the state championship in baseball, football and field and track athletics.

The several athletic teams in the school have been coached during the last year by Messrs. George G. Bechtel, Albion; Webster W. McNew, University of Wisconsin; Paul A. Schule, University of Wisconsin; E. Ray Bechtel, Albion; Fa mond R. Kelly, University of Chicago; all members of the high school faculty. Mr. Henry M. Hart is principal.





## Great Falls High School

The Great Falls High School is taking a more prominent part in athletics than it has done heretofore. It is trying to arouse an interest in games themselves rather than to make victory at any cost the aim.



CASSIUS MERRITT  
Broadwater County — Cham-  
pion in shot put.

All athletic business is managed by a board of control composed of three students and three teachers. The number of games any team may play with out of town teams in one season is limited to five.

Mr. Harry Newton is the coach and James Birkenbuel the captain of the track team.

## Helena High School

The Helena High School, Principal W. R. Trowbridge, occupies one of the finest and best equipped buildings in the state, and, though a city school, draws students from a district probably larger than that covered by any other school.

It has a corps of fourteen teachers and offers four year literary and scientific courses adapted for both those who expect to enter college and those who do not while its credentials admit without examination to all the best colleges and universities. It has a fully equipped Business department, the graduates of which take high rank among those coming from similar institutions.

## Missoula High School

The enrollment of the Missoula High School has reached 230. The course of study has been extended to four years. The school stands accredited at the Universities of Nebraska, Michigan and Wisconsin, in addition to the state institutions of Montana. The management of the school will change for next year from the City of Missoula to the County of Missoula, and if the same rate of progress is maintained Missoula County High School will be the largest school of its class in the state.

Under the inspirational leadership of Mr. Daniels the progress of the school has been rapid. The various activities of high school have been developed and good standing has been attained in music, drawing, athletics and declamation.

The High School paper is "The Bitter Root." The High School colors are Purple and Gold.



HOLTER KENNETT  
Captain Helena Track Team.



BUTTE HIGH SCHOOL TEAM—CHAMPIONS OF MONTANA 1955-6



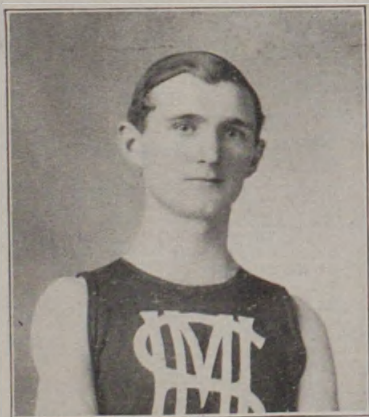
## Broadwater County High School

The Broadwater County High School located at Townsend, Mont., was organized in 1902. The teaching force of the school is: John M. Kay, Highland Park, Iowa, principal; Mrs. J. R. Fuller, University of

Chicago, Latin and German; Miss Katie E. Mark, Carleton Minn., English and History. The school offers three courses—classical, scientific and English. It requires four years to complete any one of the courses. Broadwater county scored eight points in last year's meet.

There is a healthy interest manifested in all departments of school work.

The physical and biological departments are well equipped and there is a good reference library.



SAM DINSMORE, MISSOULA  
Champion in Hurdles.

## Custer County High School

The Custer County High School is located at Miles City and was organized in 1902. The faculty is composed of four teachers, including the principal. The enrollment has doubled since the first year.

Most of the graduates are now attending higher institutions of learning.

Miss Edna B. Harris is principal.

## Fergus County High School

This school located at Lewistown has an enrollment of 100 and faculty of seven members. A four years course is maintained and the school possesses a very good equipment including three laboratories and shop.

This year's graduating class numbers seventeen.

Owing to its isolation from competing schools athletics have been carried on with difficulty. This last season basketball contests were held with Helena and a creditable showing made for the new team. The school supported two foot ball teams, boys and girls basket ball squads aggregating thirty players and has a regular field and track squad of about twenty.

M. A. G. Crane formerly of North Dakota is principal and Platt Belden, winner of last year's 100 yard dash is field and track captain.



VICTOR GRANDPRE, BUTTE  
Champion Hammer Thrower.

## Flathead County High School

The Flathead County High School occupies spacious and pleasant quarters in its new building. Five teachers besides the principal are employed and the enrollment is 130. Flathead has won a prominent position in the state in track athletics, having secured fifth place the first year at the meet and fourth place last year, besides carrying off the relay cup.



BERNARD PIERCE, BUTTE  
Champion in Mile and Two Mile

## Gallatin County High School

The Gallatin County High School is located at Bozeman, and was established by the vote of the people of the county at an election held in July, 1899. It was the first county high school to be established in Montana.

The first school year began Sept. 11, 1899. The enrollment for the first year was 92.

That of the present year is 211.

The faculty consists of a principal and seven assistant teachers: special teachers of drawing and of vocal music are also employed.

The total number of graduates of the school up to February of this year, is 145. Mr. George B. Swan is principal.

## Granite County High School

The Granite County High School is located at Philipsburg, and was established by the vote of the people of the county at an election held in April, 1904.

The school was not organized until January, 1905. The enrollment for the first half year was 76. That of the present year is over 80.

The faculty consists of a principal and four assistant teachers.

Four curricula of study, known as the classical, scientific, commercial and normal curricula, are maintained. In June, 1905, it graduated a class of 15.

A regular four years' course is given.

Earle Schoonover is captain of the track team and G. T. Bramble is principal of the school.

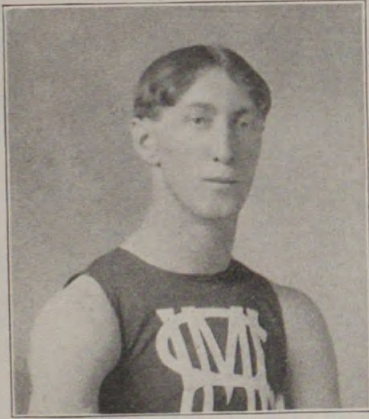


ALLEN CALBICK  
Captain Flathead Team.

## Sweet Grass County High School

The Sweet Grass County High School was organized in 1902, and has been a separate institution for three years. In May, 1904, it graduated





FEN DORMAN  
Champion in Broad Jump and Captain  
Missoula Team

a class of eleven, all of whom are teaching, holding positions of trust, or are in schools of higher order.

At the regular meeting in May, 1904, the board adopted a four years' course which compares very favorably with the high schools of the state. The school has now a most excellently equipped physical laboratory and when it moves into the "new building," will do work equal to the best.

Mr. W. C. Ryan is principal.

### Teton County High School

The Teton County Free High School founded 1901, is among the younger high schools of the state. It is enjoying a steady and successful development. Since the first of this year, the school has been housed in a thoroughly modern building erected in the summer of 1905. The school yard is ten acres in extent, and gives room for a quarter mile track and ball field. Due attention is given to athletics and the highest standard of studentship possible under the existing conditions is maintained.

### Accredited High Schools

In addition to the above short sketches of competing High Schools in the State of Montana, there are in all some twenty four different schools upon the accredited school list, twenty three of which will be represented in one or both of the contests at the Interscholastic meet.

The State Board of Education, in a meeting held June 1, 1896, took the following action:

Accredited Schools—Any High School or Academy whose course of instruction covers the branches requisite for admission to one or more of the courses of any State Educational Institution may be admitted to its accredited list of preparatory schools, after a satisfactory examination by a committee appointed by the State Board of Education. Application for such examination may be made by any school board to the Secretary of the State Board of Education, whereupon a committee appointed by the State Board of Education will examine the course of study and methods of instruction of the school, and on the committee's favorable recommendation, and the concurrence of the State Board of Education, it will be en-



MAJORY CHAMBERS, HAMILTON  
Champion Declaimer of Montana, 1906.

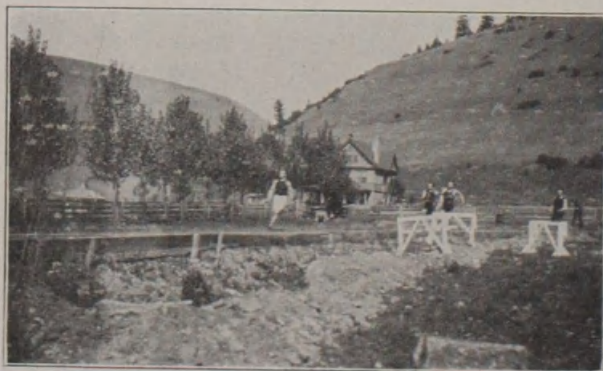
tered upon the accredited list of the State Educational Institution for which it applied. Any graduate of such an approved school will be received by the President of the State Educational Institution wherein said graduate is entitled to enter, on presentation of proper diploma and certificate from the Superintendent of said school, into any of the courses of said institution for which said graduate has been fitted.

The following is a list of Accredited High Schools.

| CITY HIGH SCHOOLS. |                | COUNTY HIGH SCHOOLS. |                              |
|--------------------|----------------|----------------------|------------------------------|
| City               | Superintendent | County               | Principal                    |
| Anaconda.....      | W. K. Dwyer    | Beaverhead.....      | Dillon L. R. Foote           |
| Billings.....      | C. S. Brother  | Broadwater.....      | Townsend John M. Kay         |
| Butte.....         | R. G. Young    | Carbon.....          | Red Lodge E. H. Murray       |
| Forsyth.....       | H. Blair       | Custer.....          | Miles City Edna Harris       |
| Fort Benton.....   | J. W. Lenning  | Fergus.....          | Lewistown A. G. Crane        |
| Glendive.....      | B. T. Butler   | Flathead.....        | Kalispell G. A. Ketcham      |
| Great Falls.....   | S. D. Largent  | Gallatin.....        | Bozeman George B. Swan       |
| Hamilton.....      | J. V. Owen     | Granite.....         | Philipsburg G. T. Bramble    |
| Helena.....        | R. J. Condon   | Jefferson.....       | Boulder Byron E. Toan        |
| Missoula.....      | J. G. McKay    | Park.....            | Livingston Lewis Terwilliger |
|                    |                | Powell.....          | Deer Lodge E. T. Eaton       |
|                    |                | Sweet Grass.....     | Big Timber W. C. Ryan        |
|                    |                | Teton.....           | Chouteau B. Guthrie          |

#### PRIVATE SCHOOLS

Stevensville Training School.....M. L. Roark





# DECLAMATORY CONTEST

Wednesday, May 16

|   |                       |
|---|-----------------------|
| Marionette Overture.....                      | Gurlitt               |
| The Misses Thompson Ingalls, Orvis and Rankin |                       |
| Cigarette's Ride and Death.....               | Ouida                 |
| Hazel Effie Eaton, Anaconda                   |                       |
| Eleven Months and Ten Days.....               | F. Hopkinson Smith    |
| William Clark, Hamilton                       |                       |
| Music.....                                    | Selected              |
| The Victor of Marengo.....                    | Anon                  |
| Allen Calbick, Flathead County                |                       |
| Herve Riel.....                               | Robert Browning       |
| Bessie Ralston, Helena                        |                       |
| Music.....                                    | Selected              |
| The Soul of the Violin.....                   | Margaret Merrill      |
| Charles Grupe, Fergus County                  |                       |
| The Boy Orator of Zepata City.....            | Richard Harding Davis |
| Harry Wallestein, Great Falls                 |                       |
| Music.....                                    | Selected              |
| Oration on Democracy.....                     | Daniel Dougherty      |
| Harold Allen Dinehart, Butte                  |                       |
| Regulus to the Carthaginians.....             | Elijah Kellogg        |
| Vere L. McCarthy, Broadwater County           |                       |

Thursday, May 17

|   |                |
|---|----------------|
| Waltz.....  | Moskowski      |
| Misses Foster, Shull, Corbin and Spencer              |                |
| Amphitheatre Scene from the Last Days of Pompeii..... | Lytton         |
| Harry Power, Granite County                           |                |
| Arena Scene from Quo Vadis.....                       | Sienkiewitz    |
| Edith Browning, Custer County                         |                |
| Fra Giacomo.....                                      | Anon           |
| Ray Dinsmore, Missoula                                |                |
| Music.....  | Selected       |
| Regulus to the Carthaginians.....                     | E. Kellogg     |
| Robert Huckleberry, Billings                          |                |
| Regulus to the Carthaginians.....                     | Elijah Kellogg |
| Estelle Mack, Gallatin County                         |                |
| The Christmas Gift.....                               | Bret Harte     |
| Mabelle Cowell, Teton County                          |                |
| Music.....  | Selected       |
| The Angel and the Shepherds.....                      | Lew Wallace    |
| Rudie Myers, Park County                              |                |
| Jean Valjean.....                                     | Victor Hugo    |
| James T. Annin, Columbus                              |                |
| Florodora Orverture.....                              | Leslie Steuart |
| Orchestra   |                |

Judges' Decision



## Singing On the Steps

Thursday Evening

7:15 to 8:00

All visitors are invited to come out Thursday evening before the Declamatory Contest and enjoy our college life.

It is the custom of the students of the University of Montana to gather every little while upon the steps of the College Hall about seven fifteen in the evening. Here in this informal manner old songs are sung, old stories told and a general good time enjoyed. Promptly as the old clock above strikes eight, the "singing on the steps" closes. No matter what is taking place a hush falls over those present, everyone rises to their feet and the men with bowed heads wait in silence till the clock finishes tolling the hour when all retire from the building in silence. Thus ends each singing on the steps.





# ATHLETIC EVENTS

## Officials

|                                |   |
|--------------------------------|---|
| Referee.....                   | F. W. Schule  |
| Clerk of Course.....           | Leo Greenough   |
| Assitant Clerks of Course..... | Jim Mills, Fred Dion  |
| Clerks of Field Events.....    | F. Wallace, Davidson  |
| Field Judges.....              | John Fisher, Robt. Cary, Roy McPhail, Elmer Johnson               |
| Starter.....                   | M. M. Joyce   |
| Scorer.....                    | Robert Sibley   |
| Assistant Scorers.....         | Fred Buck, Howard Toole   |
| Announcer.....                 | Gil Heyfron   |
| Judges at Finish.....          | Lieut. Boudell, A. R. Mosher, Thos. N. Marlowe                    |
| Timers.....                    | Lieut. Jones, W. A. Mentrum, G. Higgins, J. M. Keith, Dan Heyfron |
| Marshals—                      | Capt. Angevine, T. Adam, E. Corbin, Geo. Coffey, Vincent Craig    |

## Entries by Schools and Numbers

| <b>Anaconda</b>      |                    | <b>Missoula</b>          |
|----------------------|--------------------|--------------------------|
| 1 Joe Horn           | 26 Dan Malloy      | 51 Sam Dinsmore          |
| 2 Milton Reid        | 27 Linden McElveny | 52 Fen Dorman            |
| 3 Glide Hamilton     | 28 Edward McCoole  | 53 Burton Smead          |
| 4 Rudolph Barich     | 29 Bernard Pierce  | 54 Henry Cyr             |
| 5 Matthew Kelley     | 30 Earl Pratt      | 55 Clarence Dunstan      |
| 6 Chas. Wraith       | 31 Harry Pratt     | 56 Clare Tracey          |
| 7 Earl Freeman       | 32 Emmett Rheim    | 57 Harold Metcalf        |
| 8 David Jones        | 33 James Roach     | 58 Barry Beard           |
| 9 Oscar Landet       | 34 Chas. Severs    | 59 Chas. Duffey          |
| 10 Rondell Danielson | 35 Will Tait       | 60 Bert Condra           |
| 131 Glenn Smurr      |                    | 61 Fred Davis            |
| <b>Billings</b>      | <b>Glendive</b>    | 62 Hugh Forbis           |
| 11 Ben Witham        | 36 Howard Sinclair | 63 Ben Lemley            |
| 12 Ray Van Houten    | 37 Leroy Lindsay   | 64 Arthur Bisnop         |
| 13 Carl Sanderson    | 38 Jos. Hollins    | 65 Fern Bonner           |
| <b>Butte</b>         | 39 Percy Fleming   | 66 Gale Cable            |
| 14 Ray Barrett       | 40 John Allen      | 129 George Little        |
| 15 Elmer Binder      |                    | 130 Wm. Vealey           |
| 16 Orlando Bright    | <b>Great Falls</b> |                          |
| 17 Ed Chamberlain    | 41 Arnoid Sengbush | <b>Beaverhead County</b> |
| 18 Clement Crowley   | 42 Roy Daily       | <b>Dillon</b>            |
| 19 Victor Grandpre   | 43 Oscar Vogel     | 67 Guy Hinckley          |
| 20 Chas. Gray        | 44 Elmer Williams  | 68 Doc Erwin             |
| 21 George Hageman    | 45 Arthur Terril   | 69 John Albers           |
| 22 Sidney Hoar       | 46 Jas. Birkenbuel |                          |
| 23 Wilbur Hoar       | 47 Leonard Copelin | <b>Broadwater County</b> |
| 24 Einer Johnson     | 48 Chas. Baker     | <b>Townsend</b>          |
| 25 Thos. Kelley      | 49 Stephen Doyle   | 70 Jewell Higgins        |
|                      | 50 Donald Gibson   | 71 Jerome Merritt        |

- 72 Newton Keene  
73 Louis Pool  
74 Syriene Leaf  
75 Wm. Cotter

**Carbon County  
Red Lodge**

- 76 Ralph Vail  
77 Mark Austin  
78 John MacLeneran

**Custer County, Miles City**

- 79 Percy Lovett  
80 Jas. Arnold

**Flathead County, Kalispell**

- 81 Allen Davis  
82 Robert Steele  
83 Lloyd Denney  
84 Wm. Hodgson  
85 Allen Calbick  
86 Albert Crone

**Gallatin County, Bozeman**

- 87 Harmon Wilson  
88 Joe Morgan  
89 Harry Edsall

**Granite County  
Philipsburg**

- 90 Walter Ballard  
91 John McKenzie  
92 Allen McDonald  
93 Wm. Bowen  
94 Earl Schoonover  
95 John Parfitt

**Park County, Livingston**

- 96 Wm. Smith  
97 Roy Pennicott  
98 Fulton Robertson  
99 John Kavanagh  
100 Roscoe Wells  
101 Chas Searles

**Powell County  
Deer Lodge**

- 102 Harry Davis  
103 Will Densmore  
104 George Ramsey  
105 Jas. Aspling  
106 Donald Joslyn

**Teton County, Choteau**

- 107 Emmett Ryan

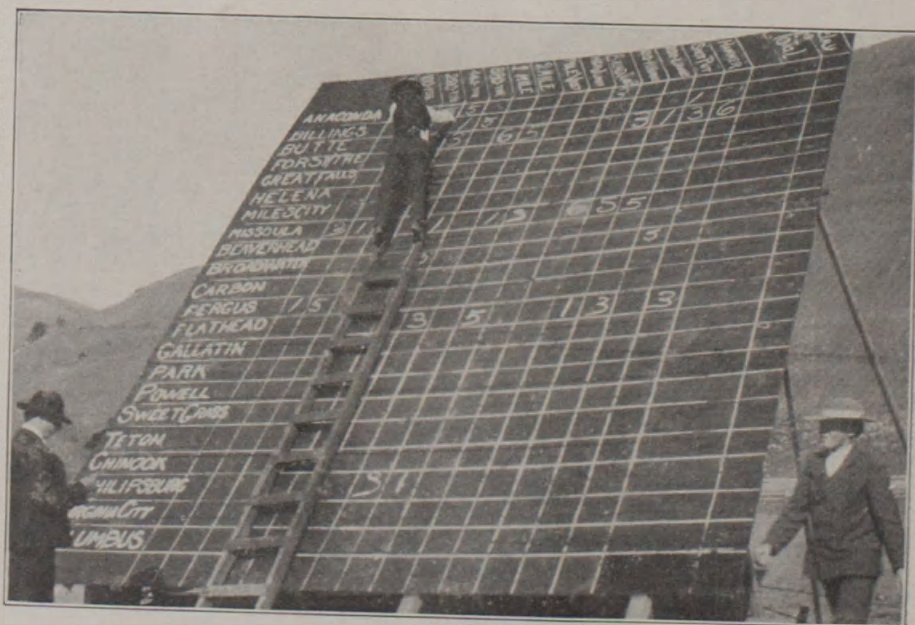
- 108 Patton McMutrie  
109 Glen Luther  
110 Edgar Hodgkiss  
111 Arbie Leech

**Fergus County  
Lewistown**

- 112 Frank Plum  
113 Cara Wilson  
114 Platt Belden  
115 Harry Briggs  
116 Ralph Tavanner  
117 Donald Anderson  
118 Ben Sheeks  
119 Jacob Holzmer  
120 Chas. Grupe

**Helena**

- 121 John Majerus  
122 Leon Goodkind  
123 Holter Kennett  
124 Richard Crum  
125 Emery Horsky  
126 Henry Sherman  
127 Wm. Stuewe  
128 Court Sheriff





## Thursday, May 17

2:00 p m—Shot Put followed up by the Broad Jump and Pole Vault. The Shot Put and Broad Jump will be decided, but they will just qualify for the Pole Vault

2:00 p m—One mile run 18.38, 35.51, 44.27 - 17.4 sec.  
2:10 p m—1st heat 120 yard high hurdles 30.43  
2:14 p m—2d heat 120 yard high hurdles 30.43  
2:18 p m—3d heat 120 yard high hurdles 129.96 20 sec

The winner of each heat will run in finals and 2d man in each heat will run in the semi-finals.

2:25 p m—1st heat 50 yard dash

2:27 p m—2d heat 50 yard dash

2:29 p m—3d heat 50 yard dash

2:31 p m—4th heat 50 yard dash

2:33 p m—5th heat 50 yard dash

2:35 p m—6th heat 50 yard dash

2:37 p m—7th heat 50 yard dash

First and 2d man in each heat will run in the semi-finals and the winners of the semi-finals will run in the finals and the winners in the heats for 2d's in the semi-finals will run in final.

2:40 p m—1st heat semi-finals 50 yard dash

2:42 p m—2d heat semi-finals 50 yard dash

2:44 p m—3d heat semi-finals 50 yard dash

Winners to run in finals and 2d men will run and the winner will run in final.

2:50 p m—Heat for 2d men in 120 yard high hurdles, winner to run in final

2:55 p m—Band

3:15 p m—1st heat 100 yard dash

3:17 p m—2d heat 100 dash

3:19 p m—3d heat 100 yard dash

3:21 p m—4th heat 100 yard dash

3:23 p m—5th heat 100 yard dash

3:25 p m—6th heat 100 yard dash

3:28 p m—7th heat 100 yard dash

1st and 2d man in each heat will run in the semi-finals

3:30 p m—1st heat semi-finals 100 yard dash

3:23 p m—2d heat semi-finals 100 yard dash

3:34 p m—3d heat semi-finals 100 yard dash

Winner of each heat will run in the finals and 2d men in each heat will run and winner will run in final

3:40 p m—Band

3:55 p m—1st heat 220 yard low hurdles

3:57 p m—2d heat 220 yard low hurdles

3:59 p m—3d heat 220 yard low hurdles

## Thursday, May 17

(Continued)

4:01 p. m.—4th heat 220 yard low hurdles.

4:03 p. m.—5th heat 220 yard low hurdles.

Winners of heats will run in the finals.

4:10 p. m.—heat for 2d men in semi finals 50 yard dash. Winner to run in final.

4:15 p. m.—1st heat 440 run.

4:18 p. m.—2nd heat 440 run.

4:21 p. m.—3rd heat 440 run.

## Friday, May 18

2:00 p. m.—Finals in the pole vault followed up by the hammer throw and high jump

2:05 p. m.—Final 120 yard high hurdles

2:10 p. m.—2 mile run

2:25 p. m.—Final 220 yard low hurdles.

2:30 p. m.—1st heat 220 yard dash.

2:32 p. m.—2d heat 220 yard dash.

2:34 p. m.—3d heat 220 yard dash.

2:36 p. m.—4th heat 220 yard dash.

2:38 p. m.—5th heat 220 yard dash.

2:40 p. m.—6th heat 220 yard dash.

1st and 2d men in each heat will run in semi finals

2:45 p m—Heat for 2d men in the semi finals 100 yard dash. Winner to run in final.

2:50 p m—Finals 50 yard dash

2:55 p m—Finals 100 yard dash

3:00 p m—Band

3:10 p. m.—1st heat semi finals 220 yard dash.

3:12 p. m.—2d heat semi finals 220 yard dash.

3:14 p.m.—3d heat semi finals 220 yard dash.

Winner of each heat and 2d man in the fastest heat will run in final.

3:20 p. m.— $\frac{1}{2}$  mile run.

3:25 p. m.—Final 220 yard dash.

3:30 p. m.—Final in the hammer throw.

3:45 p. m.—Final in the high jump.

3:50 p. m.—Band.

4:00 p. m.—Final heat 440 yard run.

4:15 p. m.—Relay race.



# EVENTS

## Entries—50-yard Dash

Record held by Piggott, Helena—Time 5 3-4 seconds

- |                                 |                                  |
|---------------------------------|----------------------------------|
| 1 Joe Horn, Anaconda            | 67 Guy Hinckley, Beaverhead Co.  |
| 2 Milton Reid, Anaconda         | 68 Doc Erwin, Beaverhead Co      |
| 11 Ben Witnam, Billings         | 70 Jewell Higgins, Broadwater Co |
| 15 Elmer Bender, Butte          | 71 Jerome Merritt, Broadwater Co |
| 17 Ed Chamberlain, Butte        | 72 Newton Keene, Broadwater Co   |
| 22 Sidney Hoar, Butte           | 73 Louis Pool, Broadwater Co     |
| 31 Harry Pratt, Butte           | 77 Mark Austin, Carbon Co        |
| 32 Emmett Rheim, Butte          | 79 Percy Lovett, Custer Co       |
| 36 Howard Sinclair, Glendive    | 80 Jas. Arnold, Flathead Co      |
| 37 LeRoy Lindsay, Glendive      | 81 Allen Davis, Flathead Co      |
| 38 Joseph Holling, Glendive     | 82 Robert Steele, Flathead Co    |
| 39 Percy Fleming, Glendive      | 89 Harry Edsall, Gallatin Co     |
| 40 John Allen, Glendive         | 90 Walter Ballard, Granite Co    |
| 41 Arnold Sengbush, Great Falls | 92 Allen McDonald, Granite Co    |
| 42 Roy Daily, Great Falls       | 95 John Parfitt, Granite Co      |
| 43 Ocsar Fogel, Great Falls     | 97 Roy Pennicott, Park Co        |
| 44 Elmer Williams, Great Falls  | 98 Fulton Robertson, Park Co     |
| 45 Arthur Terril, Great Falls   | 99 John Kavanagh, Park Co        |
| 46 Jas. Birkenbuel, Great Falls | 108 Patton McMutrie, Teton Co    |
| 50 Donald Gibson, Great Falls   | 110 Edgar Hodgkiss, Teton Co     |
| 51 Sam Dinsmore, Missoula       | 113 Cara Wilson, Fergus Co       |
| 52 Fen Dorman, Missoula         | 114 Platt Belden, Fergus Co      |
| 60 Bert Conrad, Missoula        | 121 John Majerus, Helena         |
| 62 Hugh Forbis, Missoula        | 122 Leon Goodkind, Helena        |

1st heat: 1 first; 41 second; ..... third; ..... fourth: 6 time  
 2d heat: 12 first; 22 second; 54 third; ..... fourth; ..... time  
 3d heat: 90 first; 77 second; 70 third; ..... fourth; 61 1/2 time  
 4th heat: 81 first; 108 second; 108 third; ..... fourth; 61 time  
 5th heat: 91 first; 44 second; 68 third; ..... fourth; 69 time  
 6th heat: 109 first; 68 second; 93 third; ..... fourth; ..... time  
 7th heat: 41 first; 40 second; 77 third; ..... fourth; ..... time  
 40 99 170 61

### SEMI-FINALS

1st heat: 1 first; 22 second; 62 third; ..... fourth: 5 time  
 2d heat: 2 first; 41 second; ..... third; ..... fourth; ..... time  
 3d heat: 114 first; 88 second; 81 third; ..... fourth; 7 time

### FINALS

..... first ..... second; 143 third; ..... fourth; ..... time

# Entries—100 yard Dash

Record held by Belden, Fergus Co.—Time 10 4-5 seconds

|                                  |                                 |
|----------------------------------|---------------------------------|
| 1 Joe Horn, Anaconda             | 72 Newton Keene, Broadwater Co. |
| 2 Milton Reid, Anaconda          | 73 Louis Pool, Broadwater Co.   |
| 11 Ben Witiam, Billings          | 77 Mark Austin, Carbon Co       |
| 15 Elmer Binder, Butte           | 79 Percy Lovett, Custer Co      |
| 17 Ed Chamberlain, Butte         | 80 Jas Arnold, Custer Co        |
| 22 Sidnev Hoar, Butte            | 81 Allen Davis, Flathead Co     |
| 31 Harry Pratt, Butte            | 82 Robert Steele, Flathead Co   |
| 32 Emmett Rheim, Butte           | 89 Harry Edsall, Gallatin Co    |
| 41 Arnold Sengbush, Great Falls  | 90 Walter Ballard, Granite Co   |
| 42 Roy Daily, Great Falls        | 92 Allen McDonald, Granite Co.  |
| 43 Oscar Vogel, Great Falls      | 95 John Parfitt, Granite Co.    |
| 44 Elmer Williams, Great Falls   | 97 Roy Pennicott, Park Co.      |
| 46 Jas. Birkenbuel, Great Falls  | 99 John Kavanagh, Park Co       |
| 50 Donald Gibson, Missoula       | 102 Harry Davis, Powell Co      |
| 51 Sam Dinsmore, Missoula        | 103 Will Densmore, Powell Co,   |
| 52 Fen Dorman, Missoula          | 108 Patton McMutrie, Teton Co   |
| 60 Bert Conrad, Missoula         | 110 Edgar Hodgkiss, Teton Co    |
| 62 Hugh Forbis, Missoula         | 114 Platt Belden, Fergus Co.    |
| 67 Guy Hinckley, Beaverhead Co.  | 116 Ralph Tavauner, Fergus Co   |
| 68 Doc Erwin, Beaverhead Co      | 121 John Majerus, Helena        |
| 70 Jewell Higgins Broadwater Co. | 122 Leon Goodkind, Helena       |

|          |            |             |           |         |          |
|----------|------------|-------------|-----------|---------|----------|
| 1st heat | 11 first;  | 22 second;  | 11 third; | fourth; | time     |
| 2nd heat | 114 first; | 90 second;  | third;    | fourth; | 11 time  |
| 3d heat  | 1 first;   | 60 second;  | 2 third;  | fourth; | time     |
| 4th heat | 81 first;  | 109 second; | 95 third; | fourth; | time     |
| 5th heat | 81 first;  | 73 second;  | 99 third; | fourth; | 104 time |
| 6th heat | 89 first;  | 128 second; | third;    | fourth; | 111 time |
| 7th heat | 46 first;  | 89 second;  | third;    | fourth; | 112 time |

## SEMI-FINALS

|          |           |             |        |         |          |
|----------|-----------|-------------|--------|---------|----------|
| 1st heat | 90 first; | 60 second;  | third; | fourth; | time     |
| 2d heat  | 1 first;  | 114 second; | third; | fourth; | 104 time |
| 3d heat  | first;    | second;     | third; | fourth; | time     |
| 4th heat | first;    | second;     | third; | fourth; | time     |

## FINALS

|          |            |            |         |          |
|----------|------------|------------|---------|----------|
| 1 first; | 60 second; | 114 third; | fourth; | 104 time |
|----------|------------|------------|---------|----------|



# Entries—220-yard Dash

Record held by Piggott, Helena—Time 24 seconds

|                                 |                                  |
|---------------------------------|----------------------------------|
| 1 Joe Horn, Anaconda            | 59 Chas. Duffey, Missoula        |
| 4 Rudolph Barich, Anaconda      | 60 Bert Conrad Missoula          |
| 11 Ben Witham, Billings         | 62 Hugh Forbis, Missoula         |
| 12 Ray Vian Houten, Billings    | 70 Jewell Higgins, Broadwater Co |
| 15 Elmer Binder, Butte          | 72 Newton Keene, Broadwater Co   |
| 17 Ed Chamberlain, Butte        | 73 Louis Pool, Broadwater Co     |
| 22 Sidney Hoar, Butte           | 74 Syriene Leaf, Broadwater Co.  |
| 31 Harry Pratt, Butte           | 77 Mark Austin, Carbon Co        |
| 32 Emmett Rheim, Butte          | 81 Allen Davis, Flathead Co      |
| 41 Arnold Sengbush, Great Falls | 83 Lloyd Denney, Flathead Co     |
| 42 Roy Daily, Great Falls       | 84 Wm. Hodgson, Flathead Co,     |
| 43 Oscar Vogel, Great Falls     | 92 Allen McDonald, Granite Co    |
| 44 Elmer Williams, Great Falls  | 95 John Parfitt, Granite Co      |
| 46 Jas. Birkenbuel, Great Falls | 97 Roy Pennicott, Park Co        |
| 48 Chas. Baker, Great Falls     | 102 Harry Davis, Powell Co.      |
| 49 Stephen Doyle, Great Falls   | 103 Will Densmore, Powell Co.    |
| 50 Donald Gibson, Great Falls   | 108 Patton McMutrie, Teton Co    |
| 51 Sam Dinsmore, Missoula       | 114 Platt Belden, Fergus Co      |
| 52 Fen Dornan, Missoula         | 115 Harry Briggs, Fergus Co.     |
| 54 Henry Cyr, Missoula          | 121 John Majerus, Helena         |
| 56 Clare Tracey, Missoula       | 122 Leon Goodkind, Helena        |

1st heat: 9.2 first; 14.1 second; 7.3 third; fourth: 2.6 time  
 2d heat: 4.2 first; 8.4 second; 12.2 third; fourth: 24.5 time  
 3d heat: 4.6 first; 15.5 second; 12.1 third; fourth: 2.2 time  
 4th heat: 1 first; 6.0 second; 3.1 third; fourth: 21.5 time  
 5th heat: 1.14 first. 8.9 second; 10.2 third; fourth: 2.4 time  
 6th heat: first; second; third; fourth: time  
 7th heat: first; second; third; fourth: time

## SEMI-FINALS

1st heat: 4.5 first; 1.14 second; 9.2 third; fourth: time  
 2d heat: 1 first; 10.2 second; 2.4 third; fourth: 24.5 time  
 3d heat: first; second; third; fourth: time

## FINALS

1.14 first 1 second; 4.7 third; fourth: 23.5 time

## Entries—440 yard Dash

Record held by Horn, Anaconda—Time 55 4-5 seconds

|                                  |                                 |
|----------------------------------|---------------------------------|
| 1 Joe Horn, Anaconda             | 86 Albert Croone, Flathead Co.  |
| 5 Mathew Kelly, Anaconda         | 87 Harmon Wilson, Gallatin Co.  |
| 10 Rondell Danielson, Anaconda   | 92 Allen McDonald, Granite Co.  |
| 11 Ben Witham, Billings          | 94 Earl Schoonover, Granite Co. |
| 12 Ray Van Houten, Billings      | 95 John Parfitt, Granite Co.    |
| 14 Ray Barret, Butte             | 96 Wm Smith, Park Co.           |
| 17 Ed Chamberlain, Butte         | 97 Roy Pennicott, Park Co.      |
| 21 George Hageman, Butte         | 98 Fulton Robertson, Park Co.   |
| 22 Sidnev Hoar, Butte            | 102 Harry Davis, Powell Co.     |
| 53 Burton Smead, Missoula        | 103 Will Densmore, Powell Co.   |
| 54 Henry Cyr, Missoula           | 105 John Aspling, Powell Co.    |
| 56 Clare Tracey, Missoula        | 106 Donald Joslyn, Powell Co.   |
| 60 Bert Conrad, Missoula         | 107 Emmett Ryan, Teton Co.      |
| 63 Ben Lemley, Missoula          | 108 Patton McNutrie, Teton Co.  |
| 70 Jewell Higgins Broadwater Co. | 109 Glen Luther, Teton Co.      |
| 72 Newton Keene, Broadwater Co.  | 115 Harry Briggs, Fergus Co.    |
| 73 Louis Pool, Broadwater Co.    | 123 Holter Kennett, Helena      |
| 74 Syriene Leaf, Broadwater Co.  | 124 Richard Crum, Helena        |
| 84 Wm. Hodgson, Flathead Co.     | 125 Emery Horsky, Helena        |
| 85 Allen Calbrick, Flathead Co.  |                                 |

1st heat; 6 first; 12 second; 42 third; \_\_\_\_\_ fourth; \_\_\_\_\_ time  
 2nd heat; 17 first; 102 second; \_\_\_\_\_ third; \_\_\_\_\_ fourth; \_\_\_\_\_ time  
 3d heat; 47 first; 54 second; \_\_\_\_\_ third; \_\_\_\_\_ fourth; \_\_\_\_\_ time  
 4th heat; \_\_\_\_\_ first; \_\_\_\_\_ second; \_\_\_\_\_ third; \_\_\_\_\_ fourth; \_\_\_\_\_ time

### FINALS

1 first; 17 second; 44 third; \_\_\_\_\_ fourth; 57 time

## Entries—880 yard Dash

Record held by C. Chase, Billings—Time 2 minutes, 12 seconds

|                                 |                                   |
|---------------------------------|-----------------------------------|
| 5 Matthew Kelley, Anaconda      | 53 Burton Smead, Missoula         |
| 8 David Jones, Anaconda         | 56 Clare Tracey, Missoula         |
| 10 Rondell Danielson, Anaconda  | 63 Ben Lemley, Missoula           |
| 12 Ray Van Houten, Billings     | 71 Jerome Merritt, Broadwater Co. |
| 13 Carl Sanderson, Billings     | 72 Newton Keene, Broadwater Co.   |
| 14 Ray Barrett, Butte           | 73 Louis Pool, Broadwater Co.     |
| 16 Orlando Bright, Butte        | 74 Syriene Leaf, Broadwater Co.   |
| 21 George Hagerman, Butte       | 76 Ralph Vaill, Carbon Co.        |
| 23 Wilbur Hoar, Butte           | 78 John MacLeneran, Carbon Co.    |
| 29 Bernard Pierce, Butte        | 88 Joe Morgan, Gallatin Co.       |
| 41 Arnold Sengbush, Great Falls | 92 Allen McDonald, Granite Co.    |
| 43 Oscar Vogel, Great Falls     | 94 Earl Schoonover, Granite Co.   |
| 44 Elmer Williams, Great Falls  | 100 Roscoe Wells, Park Co.        |
| 47 Leonard Copelin, Great Falls | 104 George Ramsey, Powell Co.     |
| 48 Chas Baker, Great Falls      | 105 John Aspling, Powell Co.      |
| 49 Stephen Doyle, Great Falls   | 106 Donald Joslyn, Powell Co.     |



108 Patton McMurtree, Teton Co.  
109 Glen Luther, Teton Co.  
110 Edgar Hodgkiss, Teton Co.  
112 Frank Plum, Fergus Co.

115 Harry Briggs, Fergus Co.  
123 Holter Kennett, Helena  
124 Richard Crum, Helena  
125 Emery Horsky, Helena

.....first: 44 second: 94 third: .....fourth: 25 time

## Entries—One Mile Run

**Record held by Pierce, Butte—Time 4 minutes 58 2-5 seconds**

3 Glide Hamilton, Anaconda  
7 Earl Freeman, Anaconda  
9 Oscar Landet, Anaconda  
13 Carl Sanderson, Billings  
18 Clement Crowley, Butte  
25 Thos. Kelly, Butte  
26 Dan Malloy, Butte  
29 Bernard Pierce, Butte  
35 Will Tait, Butte  
47 Leonard Copelin, Great Falls  
48 Chas. Baker, Great Falls  
49 Stephen Doyle, Great Falls  
55 Clarence Dunstan, Missoula  
56 Clare Tracey, Missoula  
58 Barry Beard, Missoula

61 Fred Davis, Missoula  
78 John MacLeneran, Carbon Co.  
86 Albert Croone, Flathead Co.  
88 Joe Morgan, Gallatin Co.  
91 John McKenize, Granite Co.  
93 Wm. Bowen, Granite Co.  
104 George Ramsey, Powell Co.  
109 Glen Luther, Teton Co.  
111 Arbie Leech, Teton Co.  
112 Frank Plum, Fergus Co.  
124 Richard Crum, Helena  
125 Emery Horsky, Helena  
126 Henry Sherman, Helena  
131 Glenn Smurr, Anaconda

Time,  $\frac{1}{4}$ -Mile..... Time,  $\frac{3}{4}$ -Mile.....

Time,  $\frac{1}{2}$ -Mile..... Time, One Mile.....

.....first; .....second; .....third; .....fourth; .....time

## Entries—Two Mile Run

**Record held by Pierce, Butte—Time 11 minutes 6 4-5 seconds**

3 Glide Hamilton, Anaconda  
7 Earl Freeman, Anaconda  
9 Oscar Landet, Anaconda  
13 Carl Sanderson, Billings  
18 Clement Crowley, Butte  
25 Thos. Kelley, Butte  
26 Dan Malloy, Butte  
29 Bernard Pierce, Butte  
35 Will Tait, Butte  
47 Leonard Copelin, Great Falls  
48 Chas. Baker, Great Falls

49 Stephen Doyle, Great Falls  
55 Clarence Dunstan, Missoula  
58 Barry Beard, Missoula  
61 Fred Davis, Missoula  
68 John MacLeneran, Carbon Co.  
88 Joe Morgan, Gallatin Co.  
91 Joe McKenzie, Granite Co.  
93 Wm. Bowen, Granite Co.  
109 Alen Luther, Teton Co.  
111 Artie Leech, Teton Co.

.....first: 2 second: 3 third: .....fourth; .....fifth; 115 time

## Entries—120 Yard High Hurdles

Record held by Dinsmore, Missoula—Time 17 3-5 Seconds

- |                                 |                                 |
|---------------------------------|---------------------------------|
| 8 David Jones, Anaconda         | 46 Jas. Birkenbuel, Great Falls |
| 20 Chas. Gray, Butte            | 50 Donald Gibson, Great Falls   |
| 27 Linden McElveny, Butte       | 51 Sam Dinsmore, Missoula       |
| 30 Earl Pratt, Butte            | 52 Fen Dorman, Missoula         |
| 41 Arnold Sengbush, Great Falls | 96 Wm. Smith, Park Co           |
| 43 Oscar Vogel, Great Falls     | 9 Jacob Holzmer, Fergus Co      |
| 44 Elmer Williams, Great Falls  | 129 George Little, Missoula     |
| 45 Arthur Terril, Great Falls   | 130 Wm. Vealey, Missoula        |

1st heat; 2 first; 80 second; 119 third; \_\_\_\_\_ fourth; \_\_\_\_\_ time  
 2nd heat; \_\_\_\_\_ first; \_\_\_\_\_ second; \_\_\_\_\_ third; \_\_\_\_\_ fourth; \_\_\_\_\_ time  
 3d heat; \_\_\_\_\_ first; \_\_\_\_\_ second; \_\_\_\_\_ third; \_\_\_\_\_ fourth; \_\_\_\_\_ time

### SEMI-FINALS

1st heat 51 first; \_\_\_\_\_ second; \_\_\_\_\_ third; \_\_\_\_\_ fourth; \_\_\_\_\_ time  
 2d heat \_\_\_\_\_ first; \_\_\_\_\_ second; \_\_\_\_\_ third; \_\_\_\_\_ fourth; \_\_\_\_\_ time

### FINALS

51 first; 30 second; 43 third; \_\_\_\_\_ fourth; 17 4/5 time

## Entries—220 Yard Low Hurdles

Record held by Dinsmore, Missoula—Time 27 4-5 seconds

- |                                 |                                  |
|---------------------------------|----------------------------------|
| 2 Milton Reid, Anaconda         | 52 Fen Dorman, Missoula          |
| 4 Rudolph Barich, Anaconda      | 54 Henry Cyr, Missoula           |
| 20 Chas. Gray, Butte            | 64 Arthur Bishop, Missoula       |
| 2 George Hageman, Butte         | 70 Jerome Higgins, Broadwater Co |
| 22 Sidney Hoar, Butte           | 71 Jerome Merritt, Broadwater Co |
| 27 Linden McElveny, Butte       | 85 Allen Calbick, Flathead Co    |
| 30 Earl Pratt, Butte            | 86 Albert Croone, Flathead Co    |
| 41 Arnold Sengbush, Great Falls | 87 Harmon Wilson, Gallatin Co    |
| 43 Oscar Vogel, Great Falls     | 96 Wm. Smith, Park Co            |
| 44 Elmer Williams, Great Falls  | 119 Jacob Holzmer, Fergus Co     |
| 45 Arthur Terrill, Great Falls  | 127 Wm. Stuewe, Helena           |
| 46 Jos. Birkenbuel, Great Falls | 129 George Little, Missoula      |
| 50 Donald Gibson, Great Falls   | 130 Wm. Vealey, Missoula         |
| 51 Sam Dinsmore, Missoula       |                                  |

1st heat 2 first; 86 second; 114 third; \_\_\_\_\_ fourth; 50 time  
 2d heat 43 first; 21 second; \_\_\_\_\_ third; \_\_\_\_\_ fourth; \_\_\_\_\_ time  
 3d heat 85 first; 52 second; 32 third; \_\_\_\_\_ fourth; 27 7/8 time  
 4th heat 116 first; 30 second; \_\_\_\_\_ third; \_\_\_\_\_ fourth; \_\_\_\_\_ time

### SEMI-FINALS

1st heat 51 first; 4 second; 96 third; \_\_\_\_\_ fourth; \_\_\_\_\_ time  
 2d heat 85 first; 22 second; 43 third; \_\_\_\_\_ fourth; \_\_\_\_\_ time  
 3d heat 2 first; 51 second; 40 third; \_\_\_\_\_ fourth; \_\_\_\_\_ time  
 4th heat \_\_\_\_\_ first; \_\_\_\_\_ second; \_\_\_\_\_ third; \_\_\_\_\_ fourth; \_\_\_\_\_ time

### FINAL

51 first; 51 second; 2 third; \_\_\_\_\_ fourth; 27 4/5 time



## Entries—Broad Jump

**Record Held by Dorman, Missoula—Distance 19 Feet, 8 1-4 Inches**

- |                                 |                                  |
|---------------------------------|----------------------------------|
| 1 Joe Horn, Anaconda            | 59 Chas. Duffey, Missoula        |
| 2 Milton Reid, Anaconda         | 62 Hugh Forbis, Missoula         |
| 20 Chas. Gray, Butte            | 62 Arthur Bishop, Missoula       |
| 22 Sidney Hear, Butte           | 70 Jewell Higgins, Broadwater Co |
| 28 Edward McCoole, Butte        | 71 Jerome Merritt, Broadwater Co |
| 30 Earl Pratt, Butte            | 74 Syriene Leaf, Broadwater Co   |
| 36 Howard Sinclair, Glendive    | 75 Wm. Cotter, Broadwater Co     |
| 73 LeRoy Lindsay, Glendive      | 77 Mark Austin, Carbon Co        |
| 38 Joseph Holling, Glendive     | 78 John MacLeneran, Carbon Co    |
| 39 Percy Fleming, Glendive      | 79 Percy Lovett, Custer Co.      |
| 40 John Allen, Glendive         | 80 Jas. Arnold, Flathead Co      |
| 41 Arnlod Sengbush, Great Falls | 83 Lloyd Denny, Flathead Co      |
| 43 Ocsar Vogel, Great Falls     | 93 Wm. Bowen, Granite Co         |
| 44 Elmer Williams, Great Falls  | 94 Earl Schoonover, Granite Co   |
| 45 Arthur Terrill, Great Falls  | 101 Chas. Searle, Park Co        |
| 50 Donald Gibson, Great Falls   | 110 Edgar Hodgkiss, Teton Co     |
| 51 Sam Dinsmore, Missoula       | 11 Arbie Leech, Teton Co         |
| 52 Fen Dorman, Missoula         | 116 Ralph Tavanner, Fergus Co    |
| 57 Harold Metcalf, Missoula     | 124 Richard Crum, Helena         |
|                                 | 125 Emery Horsky, Helena         |

|                  |                     |                      |             |
|------------------|---------------------|----------------------|-------------|
| .....No. ; ..... | first trial ; ..... | second trial ; ..... | third trial |
| .....No. ; ..... | first trial ; ..... | second trial ; ..... | third trial |
| .....No. ; ..... | first trial ; ..... | second trial ; ..... | third trial |
| .....No. ; ..... | first trial ; ..... | second trial ; ..... | third trial |
| .....No. ; ..... | first trial ; ..... | second trial ; ..... | third trial |
| .....No. ; ..... | first trial ; ..... | second trial ; ..... | third trial |
| .....No. ; ..... | first trial ; ..... | second trial ; ..... | third trial |
| .....No. ; ..... | first trial ; ..... | second trial ; ..... | third trial |
| .....No. ; ..... | first trial ; ..... | second trial ; ..... | third trial |
| .....No. ; ..... | first trial ; ..... | second trial ; ..... | third trial |
| .....No. ; ..... | first trial ; ..... | second trial ; ..... | third trial |
| .....No. ; ..... | first trial ; ..... | second trial ; ..... | third trial |
| .....No. ; ..... | first trial ; ..... | second trial ; ..... | third trial |
| .....No. ; ..... | first trial ; ..... | second trial ; ..... | third trial |
| .....No. ; ..... | first trial ; ..... | second trial ; ..... | third trial |
| .....No. ; ..... | first trial ; ..... | second trial ; ..... | third trial |
| .....No. ; ..... | first trial ; ..... | second trial ; ..... | third trial |
| .....No. ; ..... | first trial ; ..... | second trial ; ..... | third trial |
| .....No. ; ..... | first trial ; ..... | second trial ; ..... | third trial |
| .....No. ; ..... | first trial ; ..... | second trial ; ..... | third trial |
| .....No. ; ..... | first trial ; ..... | second trial ; ..... | third trial |
| .....No. ; ..... | first trial ; ..... | second trial ; ..... | third trial |

### FINALS—HAMMER THROW

|                  |                     |                      |             |
|------------------|---------------------|----------------------|-------------|
| .....No. ; ..... | first trial ; ..... | second trial ; ..... | third trial |
| .....No. ; ..... | first trial ; ..... | second trial ; ..... | third trial |
| .....No. ; ..... | first trial ; ..... | second trial ; ..... | third trial |
| .....No. ; ..... | first trial ; ..... | second trial ; ..... | third trial |
| .....No. ; ..... | first trial ; ..... | second trial ; ..... | third trial |

## Entries—Running High Jump

**Record held by Covan, Park County—Height 5 feet 5 inches**

- |                             |                                   |
|-----------------------------|-----------------------------------|
| 1 Joe Horn, Anaconda        | 68 Doc Erwin, Beaverhead Co.      |
| 2 Milton Reid, Anaconda     | 71 Jerome Merritt, Broadwater Co. |
| 24 Einer Johnston, Butte    | 73 Louis Pool, Broadwater Co.     |
| 28 Edward McCoole, Butte    | 74 Syriene Leaf, Broadwater Co.   |
| 30 Earl Pratt, Butte        | 76 Ralph Vaill, Carbon Co.        |
| 31 Harry Pratt, Butte       | 87 Harmon Wilson, Gallatin Co.    |
| 36 Howard Sinelan, Glendive | 89 Harry Edsall, Gallatin Co.     |
| 37 LeRoy Lindsay, Glendive  | 90 Walter Ballard, Granite Co.    |
| 38 Joseph Holling, Glendive | 91 John McKenzie, Granite Co.     |
| 39 Percy Fleming, Glendive  | 107 Emmett Ryan, Teton Co.        |
| 51 Sam Dinsmore, Missoula   | 112 Frank Plum, Fergus Co.        |
| 52 Fen Dorman, Missoula     | 116 Ralph Tavanner, Fergus Co.    |
| 57 Harold Metcalf, Missoula | 123 Holter Kennett, Helena        |
| 62 Hugh Forbis, Missoula    |                                   |

|                             |                             |
|-----------------------------|-----------------------------|
| .....No. .... height jumped | .....No. .... height jumped |
| .....No. .... height jumped | .....No. .... height jumped |
| .....No. .... height jumped | .....No. .... height jumped |
| .....No. .... height jumped | .....No. .... height jumped |
| .....No. .... height jumped | .....No. .... height jumped |
| .....No. .... height jumped | .....No. .... height jumped |
| .....No. .... height jumped | .....No. .... height jumped |
| .....No. .... height jumped | .....No. .... height jumped |
| .....No. .... height jumped | .....No. .... height jumped |
| .....No. .... height jumped | .....No. .... height jumped |
| .....No. .... height jumped | .....No. .... height jumped |
| .....No. .... height jumped | .....No. .... height jumped |
| .....No. .... height jumped | .....No. .... height jumped |
| .....No. .... height jumped | .....No. .... height jumped |
| .....No. .... height jumped | .....No. .... height jumped |

### FINALS IN HIGH JUMP

|                             |  |
|-----------------------------|--|
| .....No. .... height jumped |  |
| .....No. .... height jumped |  |
| .....No. .... height jumped |  |
| .....No. .... height jumped |  |
| .....No. .... height jumped |  |



## Entries—Hammer Throw

Record held by Grandpre, Butte—Distance 116 feet 3 inches

|                                 |                                 |
|---------------------------------|---------------------------------|
| 6 Charles Wraith, Anaconda      | 50 Donald Gibson, Missoula      |
| 19 Victor Grandpre, Butte       | 52 Fen Dorman, Missoula         |
| 24 Einer Johnston, Butte        | 57 Harold Metcalf, Missoula     |
| 33 Jas. Roach, Butte            | 59 Chas. Duffy, Missoula        |
| 42 Roy Daily, Great Falls       | 69 John Albers, Beaverhead Co.  |
| 41 Arnold Sengbush, Great Falls | 107 Emmett Ryan, Teton Co.      |
| 44 Elmer Williams, Great Falls  | 117 Donald Anderson, Fergus Co. |
| 46 Jas. Birkenbuel, Great Falls | 128 Court Sheriff, Helena       |

|       |               |                |             |
|-------|---------------|----------------|-------------|
| No. ; | first trial ; | second trial ; | third trial |
| No. ; | first trial ; | second trial ; | third trial |
| No. ; | first trial ; | second trial ; | third trial |
| No. ; | first trial ; | second trial ; | third trial |
| No. ; | first trial ; | second trial ; | third trial |
| No. ; | first trial ; | second trial ; | third trial |
| No. ; | first trial ; | second trial ; | third trial |
| No. ; | first trial ; | second trial ; | third trial |
| No. ; | first trial ; | second trial ; | third trial |
| No. ; | first trial ; | second trial ; | third trial |
| No. ; | first trial ; | second trial ; | third trial |
| No. ; | first trial ; | second trial ; | third trial |
| No. ; | first trial ; | second trial ; | third trial |
| No. ; | first trial ; | second trial ; | third trial |
| No. ; | first trial ; | second trial ; | third trial |
| No. ; | first trial ; | second trial ; | third trial |
| No. ; | first trial ; | second trial ; | third trial |
| No. ; | first trial ; | second trial ; | third trial |
| No. ; | first trial ; | second trial ; | third trial |
| No. ; | first trial ; | second trial ; | third trial |
| No. ; | first trial ; | second trial ; | third trial |

### FINALS—HAMMER THROW

|       |               |                |             |
|-------|---------------|----------------|-------------|
| No. ; | first trial ; | second trial ; | third trial |
| No. ; | first trial ; | second trial ; | third trial |
| No. ; | first trial ; | second trial ; | third trial |
| No. ; | first trial ; | second trial ; | third trial |
| No. ; | first trial ; | second trial ; | third trial |

19

52

107

### Entries—Shot Put

Record Held by Merritt, Broadwater Co.—Distance 36 Feet 11 Inches.

- |                                  |                                |
|----------------------------------|--------------------------------|
| 6 Charles Wraith, Anaconda       | 75 Wm Cotter, Broadwater Co    |
| 17 Ed Chamberlain, Butte         | 76 Ralph Vaill, Carbon Co      |
| 19 Victor Grandpre, Butte        | 77 Mark Autsin, Carbon Co      |
| 24 Einer Johnson, Butte          | 78 John MacLeneran, Carbon Co  |
| 32 Emmett Rheim, Butte           | 82 Robert Steele, Flathead Co  |
| 42 Roy Daily, Great Falls        | 85 Allen Calbick, Flathead Co  |
| 44 Flmer Williams, Great Falls   | 87 Harmon Wilson, Gallatin Co  |
| 46 Jas Birkenbuel, Great Falls   | 94 Earl Schoonover, Granite Co |
| 50 Donald Gibson, Great Falls    | 96 Wm. Smith, Park Co          |
| 57 Harold Metcalf, Missoula      | 99 John Kavanagh, Park Co      |
| 59 Chas. Duffy, Missoula         | 107 Emmett Ryan, Teton Co      |
| 64 Arthur Bishop, Missoula       | 108 Patton McMutrie, Teton Co  |
| 69 John Albers, Beaverhead Co    | 118 Ben Sheeks, Fergus Co      |
| 71 Jerome Merritt, Broadwater Co | 128 Count Sheriff, Helena      |
| 72 Newton Keene, Broadwater Co   |                                |

[illegible]



## Entries—Pole Vault

**Record Held by Denney, Flathead Co.—Height 9 Feet 4 Inches.**

|                                  |                                  |
|----------------------------------|----------------------------------|
| 21 George Hageman, Butte         | 71 Jerome Merritt, Broadwater Co |
| 24 Einer Johnston, Butte         | 83 Lloyd Deneny, Flathead Co     |
| 34 Chas. Severs, Butte           | 90 Walter Ballard, Granite Co    |
| 43 Oscar Vogel, Great Falls      | 94 Earl Shcoonover, Granite Co   |
| 44 Elmer Williams, Great Falls   | 112 Cara Wilson, Fergus Co       |
| 45 Arthur Terrill, Great Falls   | 120 Chas. Grupe, Fergus Co       |
| 64 Arthur Bishop, Missoula       | 123 Holter Kennett, Helena       |
| 65 Frank Bonner, Missoula        | 125 Emery Horsky, Helena         |
| 70 Jewell Higgins, Broadwater Co |                                  |

|          |                |           |
|----------|----------------|-----------|
| .....No. | .....first;    | .....high |
| .....No. | .....second;   | .....high |
| .....No. | .....third;    | .....high |
| .....No. | .....fourth;   | .....high |
| .....No. | .....fifth;    | .....high |
| .....No. | .....sixth;    | .....high |
| .....No. | .....seventh;  | .....high |
| .....No. | .....eighth;   | .....high |
| .....No. | .....ninth;    | .....high |
| .....No. | .....tenth;    | .....high |
| .....No. | .....eleventh; | .....high |

### FINALS—POLE VAULT

|          |                   |                    |                  |
|----------|-------------------|--------------------|------------------|
| .....No. | .....first trial; | .....second trial; | .....third trial |
| .....No. | .....first trial; | .....second trial; | .....third trial |
| .....No. | .....first trial; | .....second trial; | .....third trial |
| .....No. | .....first trial; | .....second trial; | .....third trial |
| .....No. | .....first trial; | .....second trial; | .....third trial |

# SCORE CARD

| NOTE<br>SCORE FIVE POINTS<br>FOR FIRST PLACE,<br>THREE FOR SECOND,<br>AND ONE FOR THIRD. | 50 YARD<br>DASH | 100 YARD<br>DASH | 220 YARD<br>DASH | 440 YARD<br>DASH | 880 YARD<br>DASH | ONE MILE<br>RUN | TWO MILE<br>RUN | POLE<br>VAULT | HIGH<br>JUMP | BROAD<br>JUMP | 120 YARD<br>HURDLE | 220 YARD<br>HURDLE | SHOT<br>PUT | HAMMER<br>THROW | TOTAL | RELAY<br>RACE |
|--|-----------------|------------------|------------------|------------------|------------------|-----------------|-----------------|---------------|--------------|---------------|--------------------|--------------------|-------------|-----------------|-------|---------------|
| ANACONDA   | 3               | 5                | 3                | 5                |                  | 3               | 3               |               | 5            | 5             | 1                  |                    |             |                 |       |               |
| BILLINGS   |                 |                  |                  |                  |                  |                 |                 |               |              |               |                    |                    |             |                 |       |               |
| BUTTE  |                 |                  |                  | 3                |                  | 6               | 6               | 4             | 2            | 3             |                    |                    |             | 5               |       |               |
| FORSYTH  |                 |                  |                  |                  |                  |                 |                 |               |              |               |                    |                    |             |                 |       |               |
| FORT BENTON  |                 |                  |                  |                  |                  |                 |                 |               |              |               |                    |                    |             |                 |       |               |
| GLENDIVE   |                 |                  |                  |                  |                  |                 |                 |               |              |               |                    |                    |             |                 |       |               |
| GREAT FALLS  |                 |                  | 1                | 1                | 3                |                 |                 |               |              |               | 1                  |                    |             |                 |       |               |
| HAMILTON   |                 |                  |                  |                  |                  |                 |                 |               |              |               |                    |                    |             |                 |       |               |
| HELENA   |                 |                  |                  |                  |                  |                 |                 |               |              |               |                    |                    |             |                 |       |               |
| MISSOULA   | 3               |                  | *                |                  |                  |                 |                 | 4             | 5            | 3             | 5                  | 2                  | 3           |                 |       |               |
| VIRGINIA CITY  |                 |                  |                  |                  |                  |                 |                 |               |              |               |                    |                    |             |                 |       |               |
| BLAVERHEAD   |                 |                  |                  |                  |                  |                 |                 |               |              |               |                    |                    |             |                 |       |               |
| BROADWATER   |                 |                  |                  |                  |                  |                 |                 |               |              |               |                    |                    |             |                 |       |               |
| CARBON   |                 |                  |                  |                  |                  |                 |                 |               |              |               |                    |                    |             |                 |       |               |
| CUSTER   |                 |                  |                  |                  |                  |                 |                 |               |              |               |                    |                    |             |                 |       |               |
| FERGUS   | 1               | 1                | 5                |                  | 5                |                 |                 |               |              |               |                    |                    |             |                 |       |               |
| FLATHEAD   | 5               |                  |                  |                  |                  |                 |                 | 5             | 1            | 5             |                    |                    |             |                 |       |               |
| GALLATIN   |                 |                  |                  |                  |                  |                 |                 |               |              |               |                    |                    |             |                 |       |               |
| GRANITE  |                 |                  |                  |                  | 1                |                 |                 |               |              |               |                    |                    |             |                 |       |               |
| JEFFERSON  |                 |                  |                  |                  |                  |                 |                 |               |              |               |                    |                    |             |                 |       |               |
| PARK   |                 |                  |                  |                  |                  |                 |                 |               |              |               |                    |                    |             |                 |       |               |
| POWELL   |                 |                  |                  |                  |                  |                 |                 |               |              |               |                    |                    |             |                 |       |               |
| SWEET GRASS  |                 |                  |                  |                  |                  |                 |                 |               |              |               |                    |                    |             |                 |       |               |
| TETON  |                 |                  |                  |                  |                  |                 |                 |               |              |               | 5                  | 1                  |             |                 |       |               |
|  |                 |                  |                  |                  |                  |                 |                 |               |              |               |                    |                    |             |                 |       |               |



# GENERAL PROGRAM

---

Wednesday, May 16

Declamation contest at 8:30 p. m., Assembly Room, University hall.

---

Thursday, May 17

Meeting of State Superintendents and Principals at 9 a. m., Assembly room, University hall.

Meeting of all Athletic contestants at 10:30 a. m., Assembly room, University hall.

Athletic meet at 2 p. m., Montana Field, University campus.

Singing on the Steps at 7:15 p. m., University hall steps.

Declamation contest at 8:30 p. m., Assembly room, University hall.

---

Friday, May 15

Transportation committee meeting 9—10:30 Faculty room, University hall. All rebates will be paid upon application at this time.

Athletic meet at 2 p. m., Montana Field, University campus.

Concert and awarding of medals at 8:30 p. m., Union opera house.

Reception of president and faculty to visiting superintendents, principals and teachers at 10:30 p. m. Dr. Craig's residence, University place

---

Friday Evening, May 18, 8:30 p. m.

UNION OPERA HOUSE

Final Jollyng Up and Awarding of Medals

Concert by

The University Musical Organizations

Consisting of

Glee Club, Band and Orchestra

You can't afford to miss this treat

# Friday, May 18

## Part I

|                   |                       |            |
|-------------------|-----------------------|------------|
| Overture.....     | The Bouquet.....      | Laurendeau |
|                   | University Band       |            |
| Vocal Solo.....   | Deep in the Mine..... | Jude       |
|                   | Mr G A McAllister     |            |
| Martial Hymn..... |                       | Gomez      |
|                   | University Glee Club  |            |

## Part II

|                                  |                                  |
|----------------------------------|----------------------------------|
| Awarding of Cups and Medals..... | President Craig and Coach Schule |
|----------------------------------|----------------------------------|

## Part III

|                        |                           |               |
|------------------------|---------------------------|---------------|
| Serenade.....          |                           | Anon          |
|                        | University Band           |               |
| Cornet solo.....       | (a) The Angeleus.....     | Carrie Jacobs |
|                        | (b) If I Were a Rose..... | Bond          |
|                        | Mr Louis Howard           |               |
| Brown October Ale..... |                           | DeKoven       |
|                        | Univeristy Glee Club      |               |
| Recitation.....        |                           | Selected      |
|                        | Mr Gilbert Heyfron        |               |
| Vocal Solo.....        | In Thy Dreams.....        | Dudley Buck   |
|                        | Miss Kellogg              |               |
| Sailors' Chorus.....   |                           | Bullard       |
|                        | Univeristy Glee Club      |               |

## UNIVERSITY GLEE CLUB

|               |                   |
|---------------|-------------------|
| First Tenor   | First Bass        |
| Frank Thomas  | Fred Greenwood    |
| Ed Corbin     | James Mills       |
| Jesse Fuller  | Earl Greenough    |
| Jesse P Rowe  | Wm Sparks         |
|               | Second Bass       |
| Second Tenors | George McAllister |
| Robert Sibley | Chas Dimmick      |
| Robert Cary   | Henry Howell      |
| Dilwyn Thomas | Delbert I Grush   |

## UNIVERSITY BAND

|                                   |                              |
|-----------------------------------|------------------------------|
| Louis Howard, leader, solo cornet | D I Grubs, solo alto         |
| Bernie Kitt, 2d cornet            | Fred Greenhood, 2d alto      |
| Fred Smith, 1st cornet            | George Coffey, piccolo       |
| John Latimer, trombone            | Homer Dewell, clarinet       |
| James Bonner, trombone            | Wm Sparks, clarinet          |
| Floyd Hardenburgh, trombone       | Herman C McGregor, clarinet  |
| Earl Greenough, tuba              | Claude Spaulding, snare drum |
| Chas Dimmick, baritone            | Fred Cummings, base drum     |





