

9-1-1968

1968 Grizzly Football Yearbook

University of Montana—Missoula. Athletics Department

Let us know how access to this document benefits you.

Follow this and additional works at: https://scholarworks.umt.edu/grizzlyfootball_yearbooks

Recommended Citation

University of Montana—Missoula. Athletics Department, "1968 Grizzly Football Yearbook" (1968). *Grizzly Football Yearbook, 1939-2018*. 64.

https://scholarworks.umt.edu/grizzlyfootball_yearbooks/64

This Yearbook is brought to you for free and open access by the Intercollegiate Athletics at ScholarWorks at University of Montana. It has been accepted for inclusion in Grizzly Football Yearbook, 1939-2018 by an authorized administrator of ScholarWorks at University of Montana. For more information, please contact scholarworks@mso.umt.edu.

Athletic Dept - Announcements

1968
Cop. 2

ARCHIVES

Grizzly
All American
Bob Beers



1968

Grizzly

football

University of Montana

University of Montana

1968 SCHEDULE

Date	Opponent	Time
Sept. 14—	University of North Dakota at Billings	8 p.m. MDT
Sept. 21—	University of South Dakota at Vermillion	7:30 p.m. CDT
Sept. 28—	Portland State College in Missoula	1:30 p.m. MDT
Oct. 5—	Utah State University in Missoula	1:30 p.m. MDT
	(Homecoming)	
Oct. 12—	*University of Idaho at Moscow	1:35 p.m. PDT
	(ABC Regional Television)	
Oct. 19—	*Idaho State University at Pocatello	2 p.m. MST
Nov. 2—	*Montana State University in Missoula	1:30 p.m. MST
Nov. 9—	*Weber State College in Missoula	1:30 p.m. MST
Nov. 16—	Northern Arizona University at Flagstaff	1:30 p.m. MST

*Denotes Big Sky Conference Game

FRESHMAN "CUBS" SCHEDULE

Oct. 18—	Montana State University.....	Bozeman
Nov. 1—	Idaho State University	Missoula
Nov. 8—	University of Idaho	Moscow

1967 VARSITY RESULTS

Opponent	Site	UM	Opp.
U of North Dakota at Grand Forks		19	14
U of South Dakota at Billings		7	3
Weber State College at Ogden, Utah		13	12
U of the Pacific in Missoula		21	7
University of Idaho in Missoula		14	19
Idaho State U in Missoula		20	0
Northern Arizona U in Missoula		10	7
Montana State University at Bozeman ...		8	14
Utah State U at Logan		14	20
Portland State College at Portland, Ore.		55	7

Won 7, Lost 3, Tied 0

1967 BIG SKY RESULTS

	Big Sky		All Games	
	W	L	W	L
Montana State University ...	4	0	7	3
University of Montana	2	2	7	3
Weber State College	2	2	6	4
University of Idaho	2	2	4	6
Idaho State University	0	4	1	9

1968 Football Brochure University of Montana

THE CONTENTS

Schedule, 1967 Results.....	Inside Front
Contents, Travel Information	1
General Information, Grid and Athletic Staffs	2
School and President.....	3
Athletic Director, Football Staff.....	4-6
1968 Outlook.....	7
Picture Page.....	8
Player Briefs.....	9-17
Team Roster.....	18-19
Team Breakdown.....	20
All-America Bob Beers.....	21
Opponent Information.....	22-30
Results, Last 10 Seasons.....	31
1967 Final Statistics.....	32-33
All-Time Record.....	34
Cross Country Outlook.....	35
Press Information.....	36
1968-69 Basketball Schedule.....	Inside Back
Big Sky Composite Schedule.....	Back Cover

TRAVEL INFORMATION

Sept. 14—UNIVERSITY OF NORTH DAKOTA

at Billings, Montana
Not staying overnight

Sept. 21-22—UNIVERSITY OF SOUTH DAKOTA

at Vermillion, S.D.
Lampighter Motel

Oct. 12—UNIVERSITY OF IDAHO

at Moscow, Idaho.
Not staying overnight

Oct. 19—IDAHO STATE UNIVERSITY

at Pocatello, Idaho
Not staying overnight

Nov. 15-16—NORTHERN ARIZONA UNIVERSITY

at Flagstaff, Arizona
Ramada Inn

University of Montana

GENERAL INFORMATION

Founded.....	February 17, 1893
President.....	Robert T. Pantzer
Location.....	Missoula, Montana
Conference.....	Big Sky
Enrollment.....	6,200 (Est.)
Nicknames.....	Grizzlies, Silvertips
School Colors.....	Copper, Silver and Gold
Stadium.....	Dornblaser (10,000)
School Newspaper.....	Montana Kaimin
School Phone Number.....	AC 406—243-0211

FOOTBALL COACHES

Head Coach, Offensive Backs.....	Jack Swarthout (Ext. 5331)
First Assistant, Defensive Backs.....	Jack Elway (Ext. 5331)
Interior Linemen.....	Wally Brown (Ext. 5331)
Interior Linemen.....	Bill Betcher (Ext. 5331)
Linebackers, Ends.....	Ron Nord (Ext. 5331)

REMAINING ATHLETIC STAFF

Athletic Director.....	Jack Swarthout (5331)
Faculty Representative.....	Dr. Earl Lory (2311)
Director, Athletic Facilities.....	Earl Martell (4051)
Sports Information Director.....	Bill Schwanke (2522)
Ticket Manager.....	Gary Hughes (4051)
Team Physician.....	Dr. Robert Curry (2122)
Athletic Trainer.....	Naseby Rhinehart (2652)
Equipment Manager.....	Rupert Holland (4351)
Athletic Secretary.....	Cela Burham (5331)
Track, Cross Country Coach.....	Harley Lewis (5331)
Head Basketball Coach.....	Bob Cope (5331)
Assistant Basketball Coach.....	Lou Rocheleau (5331)
Swimming Coach.....	Fred Stetson (5331 or 2763)
Golf Coach.....	Jack Miller (543-3841)

The University

Since it was chartered by the Third Legislative Assembly of Montana, February 17, 1893, the University of Montana has grown from an institution with 50 students and 7 faculty members in 1895 to more than 6,000 students and 300 full-time instructional staff members in 1968. Fifty-nine per cent of these faculty members hold doctoral degrees.

The University of Montana is fully accredited by the Northwest Association of Secondary and Higher Schools. The seven professional schools, including business administration, education, fine arts, forestry, journalism, law and pharmacy, are all accredited by appropriate national organizations.

More than 40 buildings are contained within the limits of the 116-acre main campus on the eastern edge of Missoula. The University owns an additional 624 acres on Mt. Sentinel. A short distance south of the main campus is a 154-acre area holding 394 married students housing units, a nine-hole golf course, Campbell Baseball Field and the new Dornblaser Stadium.

The University also owns 295 acres at Fort Missoula, plus 20,850 acres in the Lubrecht Experimental Forest, 35 miles northeast of Missoula, and 167 acres on Flathead Lake, including a Biological Station at Yellow Bay, 90 miles north of Missoula.

The President

Robert T. Pantzer was appointed President of the University of Montana December 16, 1966, by the State Board of Regents, after he served as acting president since August 15, 1966.



Robert T. Pantzer

A familiar figure on the Missoula campus, Pantzer has been associated with the University since 1957, serving as a professor of business administration and as financial vice president.

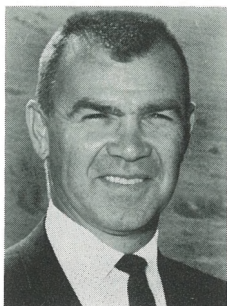
He received his B.A. degree in business administration from UM in 1940 before serving 42 months overseas during World War II. He was discharged from the Army with the rank of major and a Bronze Star for meritorious service in the East Indies.

Following the war, Pantzer returned to graduate from the University of Montana law school in 1947 before serving as county attorney at Chester, Montana from 1947-1950 and practicing law in Livingston, Montana until 1957.

Pantzer and his wife, Ann, have three children.

Athletic Director Head Coach

Since assuming the duties of both head football coach and athletic director at the University of Montana, Jack Swarthout has put a drive into the school's athletic program which has not been seen in Missoula for many years. Its immediate results showed in the 7-3 football record last fall, the best mark the school has had since 1937.



Jack Swarthout

Swarthout came to Montana, where he played football (1940-42), from a high school position in Olympia, Wash., where his football teams compiled a 50-14-2 record in seven seasons. Before that, he coached at Hoquiam, Wash., High School following three years as an assistant to Darrell Royal at the Universities of Washing-

ton and Texas.

Born in Prosser, Wash., Feb. 23, 1920, Swarthout lettered in football, basketball and baseball in high school. He graduated from the University of Montana in 1942 with a bachelor's degree in political science. He then served four years in the armed services as a lieutenant in the parachute infantry.

He and his wife, Beverly, were married in 1946. They have four children: Sandi, 21; Jacki, 19; Harold Jack II, 17, and Michele, 12.

The Staff

COACH JACK ELWAY. Joined Montana staff February 1, 1967, coming from Grays Harbor Junior College, Aberdeen, Washington.

Responsibilities: First assistant, in charge of secondary defense.

Coaching Experience: High School—Six years head football coach, Port Angeles, Wash., High School (39-12-0); eight years basketball coach; six years baseball coach. College—Six years head football coach, Grays Harbor JC (32-17-2).

Personal Information: Born Hoquiam, Wash., 1931. High School—Hoquiam, Wash., three football letters, two basketball letters, two baseball letters, one track letter. College—Washington State



Jack Elway

University, graduated in 1953 with B.S. degree in physical education. Master's degree, physical education, Washington State, 1965. Lettered in football as freshman before injury halted athletic career. Service—4-F. Married—June, in Hoquiam, Wash. Children—Lee Ann, 8; John and Jana, twins, 7.

COACH BILL BETCHER. Joined Montana staff July 1, 1967, coming from Central Washington State College, Ellensburg, Washington.



Bill Betcher

graduated in 1963 with B.A. degree in education, with physical education major. Two football letters, Little All-America, 1961. Service—None. Married—Gloria, in Washougal, Wash., 1957. Children—Shelly, 10; Suzan, 9; Shannon, 7, and Sally, 3. Hobbies—Hunting and fishing.

Responsibilities: Line coach, interior.

Coaching Experience: High School — Four years head football coach, Castle Rock, Wash., High School (22-5). College — Four years line coach, Central Washington State College (1962-63, 1966-67).

Personal Information: Born Woodland, Wash., 1939. High School — Washougal, Wash., High School, football, basketball, baseball and track letters. College—One year, University of Oregon, freshman letter in football; Central Washington State College,

COACH WALLY BROWN. Joined Montana staff February 1, 1967, coming from Columbia Basin Junior College, Pasco, Washington.



Wally Brown

Boise Junior College, Idaho, 1952-54, football and baseball letters; University of Idaho, graduated in 1956 with B.S. degree in education. Master's degree, education, Idaho, 1957. Post-graduate work, New York State University, 1959. Football and baseball letters at Idaho. Service—National Guard, 1952-55. Married—Barbara, in Moscow, Idaho, 1957. Children—None. Hobbies—Golf, swimming, summer baseball and softball.

Responsibilities: Line coach, interior.

Coaching Experience: High School—Six years line coach, Pasco, Wash., High School; three years head baseball coach, Pasco H.S. (45-15). College — Five years line coach, Columbia Basin JC (40-5-2); number two in nation, 1962; number three in nation, 1965. Two years head baseball coach, Columbia Basin JC (43-17).

Personal Information: Born Caldwell, Idaho, 1934. High School—Pasco, Wash., High School, football, baseball and basketball letters. College—

COACH RON NORD. Joined Montana staff March 6, 1968, after coaching Montana basketball since 1962.



Ron Nord

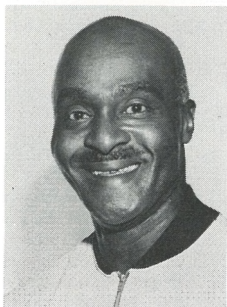
ated in 1950 with degree in physical education; letters in baseball and basketball, injured for football. Service—Air Force, 1944-46, worked on atom bomb project. Married—Phyllis, in Minneapolis, Minn., 1946. Children—Debbi, 19; Jeff, 17; Mark, 14; Wendy, 12; Kris, 10. Hobbies—Golf.

Responsibilities: Linebackers and ends.

Coaching Experience: High School—Two years backfield coach, Beaver Dam, Wis., High School; seven years, backfield coach, Oshkosh, Wis., High School. College—Scout and recruiter, University of Wisconsin, while assistant basketball coach, three years.

Personal Information: Born Minneapolis, Minn., 1926. High School—South High School, Minneapolis, Minn., letters in football, basketball and baseball. College—University of Wisconsin, gradu-

TRAINER NASEBY RHINEHART. Joined Montana staff following graduation from UM, 1935.



Naseby Rhinehart

football, basketball and track, honorable mention All-America in football, 1934. Service—Defense work, 1940s. Married—Evelyn, in Missoula, 1934. Children—Naseby, Jr., 32; Vodie Ann, 30; Sidney, 21; Penney, 16. Hobbies—Landscaping.

Responsibilities: Head trainer for all sports.

Experience as Trainer: Beginning 34th year as University of Montana athletic trainer. Earned Ray T. Rocene Sportsman of the Year Award. Named to Helms Athletic Foundation Hall of Fame, 1967.

Personal Information: Born Cordeal, Ga., 1911. High School—Lincoln High School, Milwaukee, Wis., football and track letters; All-City end in 1929. College—University of Montana, graduated in 1935 with B.A. degree in physical education; three letters in

THE 1968 OUTLOOK

In two words, the outlook for University of Montana football in 1968: **much improved.**

Still trying to recover from the shock of watching Jack Swarthout lead the 1967 Grizzlies to a 7-3 record, best in 30 years, during his first season at the helm, Grizzly fans new and old are eagerly awaiting the outcome of what apparently has been a successful recruiting stint.

Only 12 lettermen were lost through graduation, and 26 lettermen made it through spring drills.

Following spring practice, the Grizzly roster included nearly 60 players, the largest roster in the University's history. And indications are that the Grizzlies will be at least two deep, with strength, at every position.

Coach Swarthout indicated before spring drills that the offensive line, light but fast in 1967, will show an average increase of 30 pounds per man, with more speed, in 1968. Depth is adequate in the offensive front wall, which could see one of the starting ends at 220 pounds, tackles at 255 and 245, guards at 225 and 230, and the center at 250. And all have impressive speed.

In the offensive backfield, depth is also in evidence. At quarterback, lone returnee Pete Mullins, a senior, apparently has the edge over former JC All-America Ray Brum, a junior who transferred in the spring. A pair of sophomores, Jim Opitz and Jack Cloherty, picked up good experience in the spring, but still need work.

The tailback spot, once thought to virtually belong to fleet, powerful junior Roy Robinson, a three-event qualifier for the 1968 NCAA track championships, is now up for grabs between Robinson and junior transfer Mike Buzzard, who piled up points in the spring while Robinson concentrated on the cinder sport.

Fullback also appears solid and deep, with junior Tony Gabriel, a transfer, weighing 230, and sophomore John McBurrows, a redshirt last season, weighing 215. Both possess more than adequate speed and power.

At slotback, veteran senior Rick Strauss and last-year backup man Gartha Morgan will be battling again, with sophomore Pat Schruth looming as a darkhorse with good potential.

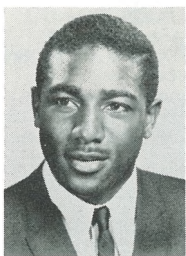
Defensively, the Grizzlies were surprisingly strong last year, but depended perhaps too much on All-America linebacker Bob Beers, who returns as a senior this fall. This year, the line has been bolstered with more size and depth to take some pressure off the savage-hitting 210-pounder, who is still expected to contribute mightily to Bruin defensive efforts.

Depth is again at least in pairs on the defensive line, with three new junior transfers arriving in the fall to boost hopes for a dependable front wall.

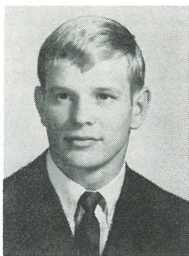
In the defensive backfield, three of four 1967 starters return and look like they will start again, while a flock of youngsters, all impressive, are battling for the fourth spot.

Coach Swarthout has his own way of looking at the situation:

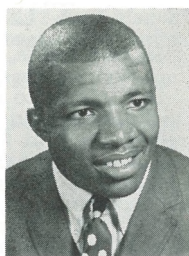
"On paper, and in many other ways, it looks like we'll be a much stronger football team in 1968 than we were last year. Whether or not our record will improve remains to be seen."



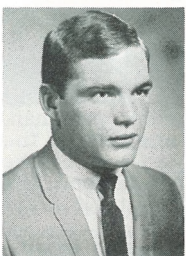
Ron Baines



Mike Glennon



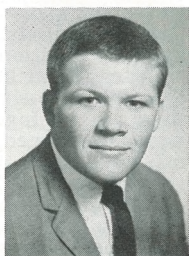
Maceo Gray



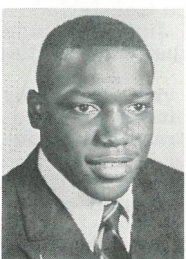
Ole Hedstrom



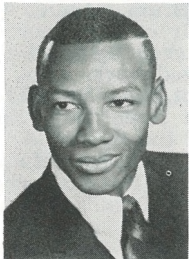
Jim Kelly



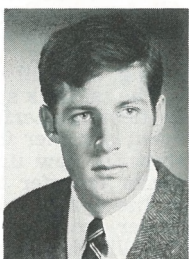
Tom Lavery



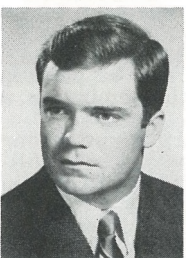
John McBurrows



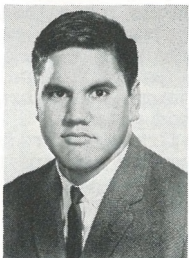
Gartha Morgan



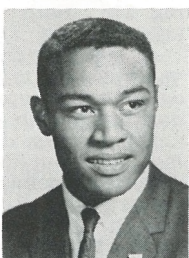
Pete Mullins



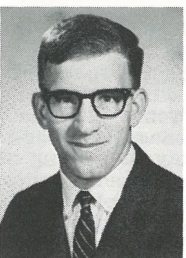
Mick O'Neill



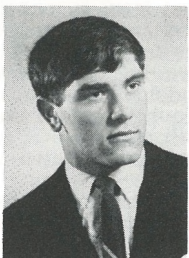
Greg Paresa



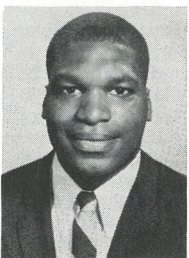
Roy Robinson



Rick Strauss



Bill Waters



Herb White

Player Briefs

ENDS

81—BAINES, Ron (5-11, 175, Senior, Tacoma, Wash.)—In the fall, Ron's fancy turns to football and doing a fine job at split end for the Grizzlies. As a junior, the highly versatile Baines led the Grizzlies in receptions with 19 for 273 yards, and also in punt returns with 26 for 318 yards. In the spring, Ron competes in track, running the 100-yard dash in 9.6 seconds and high jumping up to 6-8½, the UM school record. Coaches would like to see Ron stay at split end, but if necessary, he can work as a defensive back, and a good one.

86—DeBORD, Jim (6-2, 195, Sophomore, Pasco, Wash.)—Tried at various spots during his freshman year, Jim impressed Grizzly coaches most with his work as a defensive end. During the spring intra-squad game, he intercepted a fumble and raced more than 40 yards for a touchdown. As a freshman, he did all the punting for the Cubs, and wound up the year with a 36.8-yard average on 19 tries, so he may get a try as a punter this fall.

82—ENOS, Jim (6-0, 195, Junior, Port Angeles, Wash.)—A knee injury kept Jim from competing in the 1967 season after he transferred from Everett College in Washington. He continued to work with the 1967 team as a redshirt, and came out in the spring of 1968 with his knee apparently well-enough healed to allow him to play this year. Though a doubtful starter, Jim will see plenty of action in reserve, with quickness, good moves, and glue-like fingers assets that make him a good split end.

29—GALLAGHER, Tim (6-2, 214, Sophomore, Kalispell)—Good size coupled with good speed make Tim a good prospect for the defensive end position for the 1968 Silvertips. At Flathead High School, Tim worked as an offensive end, and in fact never played defensive end until he was tried there in the 1967 Montana East-West High School game in August. Grizzly coaches were there to watch and noted his excellent first-time performance at defensive end.

83—GLENNON, Mike (6-1, 200, Junior, Billings)—A sometime starter as a sophomore, Glennon was tried at linebacker, tight end and defensive end in 1967. The defensive end try came last, and proved to be the best. After spring drills, Mike held down a starting defensive end spot, and it appears he might still be there in the fall. He is a former All-State fullback from Billings Central High School.

88—KELLY, Jim (6-0, 224, Senior, Seattle, Wash.)—Jim could be called "Mr. All-Around" after the shifting of positions he went through in 1967. Originally a starter at tight end, where he will definitely be in 1968, lack of depth made it necessary to move him to offensive tackle early in the season. He stayed there through the season, and wound up with All-Conference honorable mention honors as a result. He was an All-Washington JC player before transferring to Montana last season.

80—LUIS, Al (5-10, 190, Junior, Orland, Calif.)—Listed as a split end on offense, Al is likely to see just as much, if not more, action as a defensive back. He handles both jobs well with agility, quickness and good football sense. Could be a starter defensively, but will have trouble pushing Ron Baines out of a starting split end spot.

85—NOTARO, Jim (6-1, 201, Sophomore, Tampa, Fla.)—One of the big surprises during spring drills, Jim came out again after being cut from the 1967 squad. Coaches were more than impressed with his added size, adequate speed, and more than adequate desire. Jim will be used primarily as a defensive end, but could play the offensive tight end spot as well.

84—WHITE, Herb (5-10, 190, Senior, Ecorse, Mich.)—One switch Grizzly coaches made for spring drills that they made with some hesitation was moving Herb from offensive guard to defensive end. The lightning fast Michigan native was twice an All-Big Sky Conference selection at offensive guard. But the coaches feel that in 1968, Herb will be more valuable defensively. One of the fastest men on the squad, he should be a starter this fall.

TACKLES

56—DAWSON, Ed (6-3, 218, Senior, Shelton, Wash.)—Ed worked at center last year for the Grizzlies, but was moved to offensive tackle to add depth to the position in 1968. Though a doubtful starter, coaches think Dawson will provide good backup strength if needed. Hampered by injuries during the spring, he will have some coming back to do in the fall.

72—GARSKE, Ron (6-3, 234, Junior, Chico, Calif.)—Ron will be a new addition to the Grizzly roster this fall, but his size and speed will make him a strong contender for a starting spot on defense. Coaches will also keep him in mind as a possible offensive tackle starter. Ron transferred from Shasta College, where he was an All-Conference player.

71—GUTMAN, Bill (6-2, 245, Junior, Seattle, Wash.)—Gutman transferred in the spring from Grays Harbor College in Washington, where he was an All-Washington offensive tackle for two seasons. Coaches credit him with "excellent speed," and have him pegged as almost a sure offensive starter this fall. He started at offensive tackle all through spring drills.

87—POSTLER, Willie (6-4, 238, Sophomore, Vancouver, B.C.)—Willie is a big Canadian who is expected to do much more than take up room in the Grizzly defensive line. Although more experience will be needed by the husky youngster, coaches feel that he can serve as an adequate sub this fall, and a more than adequate tackle in the future.

74—STACHNIK, Ray (6-2, 235, Sophomore, Chicago, Ill.)—Closer to a starting position than fellow soph Postler, Ray has the speed and hard hitting ability, plus plenty of desire, to work well at either offensive or defensive tackle. Hampered by injury during 1968 spring drills, Ray more than proved himself as a frosh lineman going both ways in the fall of 1967.

79—STEDHAM, John (6-4½, 245, Junior, Chehalis, Wash.)—With one year of starting defensive experience behind him, "The Tree" will nevertheless have his work cut out for him if he plans to stay there in the fall of 1968. With a good group of transfers and sophomores out to cut him off, he'll have to work that much harder. Often effective against double-team offensive blocking.

54—STODDARD, Joe (6-6, 240, Junior, Gig Harbor, Wash.)—Another new addition who made his decision to join the Grizzlies late in the summer, Joe will do his part in adding depth at either offensive or defensive tackle. A former All-Washington JC player at Everett College before joining the Marine Corps for two years, Joe returned to the states with a Purple Heart from Viet Nam action. Big and fast, he's a starting threat.

75—STRANAHAN, Larry (6-0, 225, Junior, Missoula)—Last year, coaches weren't impressed enough with Larry to give him a scholarship, but he came out anyway. He didn't play much, but not to be discouraged, he gave it another whirl last spring. By the end of spring drills, he had earned his scholarship for 1968, plus recognition as one of the best linemen on defense in spring drills. Although a doubtful starter, the coaches won't be afraid in the least to put him in.

73—THRASHER, Dennis (6-3½, 245, Junior, Marysville, Calif.)—Dennis is one of four defensive linemen transferring in the fall who is expected to be a top contender for a starting spot. Obviously boasting needed size, Dennis has the speed to go with it. He was an All-Northern California High School player and a unanimous All-Conference player for Yuba Junior College last fall. Considered already as a pro prospect.

78—TUBBS, Fred (6-2, 223, Senior, Honolulu, Hawaii)—Tubbs trimmed some weight since the 1967 season, and his mobility and speed improved with each pound he dropped. Doubtful as a starter, Fred gives Grizzly coaches this year just that much more "good, solid depth." He'll see action, and probably plenty of it.

76—UPERESA, Tuufuli (6-3, 255, Junior, Honolulu, Hawaii)—Ufu, as he is called by his teammates, is friendly enough off the field, but when he dons the pads and hits the gridiron, look out. Here for spring ball, Ufu was not too hard to pick out even though there were others nearly as big on the field. Could start either offensively or defensively, but probably will go with the offense. Extremely fast and graceful for his size.

GUARDS

64—HEDSTROM, Ole (6-0, 210, Junior, Laurel)—Despite his small size, Ole can make mincemeat out of opponents strictly with desire and toughness. The rougher it is, and the bigger the opposition, the better he likes it. A starting defensive lineman after being switched from offense early in the 1967 season, Ole earned enough experience to be able to go either way. Probably will stay on defense, though.

70—HOWARD, Lon (5-11, 230, Senior, Centralia, Wash.)—Like Bill Waters, Lon was moved to guard during spring drills after starting at tackle in 1967. Lon's size and speed are plenty good enough to work at guard, and he should start there this fall. Lon earned All-Conference recognition last year.

61—LAVERY, Tom (5-10, 195, Junior, Chicago, Ill.)—Not too much one can say about Tom that's based on impressions one might reap from watching him in action. An injury forced him to redshirt last season, and he still wasn't sufficiently recovered to compete in spring drills this year. His reputation out of junior college is excellent, however, and with renewed experience, he could threaten any starter.

60—LYONS, Joe (6-1, 195, Sophomore, Kalispell)—Another pleasant surprise during the frosh season and spring drills, Joe will need more work before he can fill in adequately on the offensive line. Tough, and hard-nosed, he was one of several freshmen who wasn't counted on for varsity action, but came through. Should see some action in 1968, adding depth at the guard spot.

77—McCANN, Mike (6-2, 212, Junior, Renton, Wash.)—"Henry," as he's called by his teammates, made his way through several positions on the defensive side of things during the 1967 season, not because he was bad at any one of them, but because coaches wanted to keep him in action at whichever position he could fill best. Defensive end, middle guard, and defensive tackle positions all became familiar to Mike, but he might have to forget them this year. Coaches have him playing offensive guard.

68—ORTIZ, Butch (5-8½, 175, Senior, Monterey Park, Calif.)—If you think 175 pounds is too small for a guard, you're probably right. Unless that guard is Butch Ortiz. Moved out of a starting spot for a period because of injury last year, he came on strong later to recapture that spot. As tough a football player, pound for pound, as you'll find anywhere, he's also an excellent gymnast.

63—TALOLUTU, John (5-11, 195, Junior, Honolulu, Hawaii)—Another new addition this fall, John is expected to start defensively, but where remains the big problem. Small, but tremendously fast, John has the moves to be through the line almost before the quarterback gets the ball from center, and still not draw a flag. Could play in the defensive line at guard or tackle, or at linebacker. Savage hitter.

65—WATERS, Bill (6-1, 225, Junior, Troy)—Bill picked up lots of great experience at offensive tackle last year, but like former fellow tackle Lon Howard, he was "too small" this year and was moved to guard. Should be a strong starting contender, with plenty of speed and football savvy. Tough, loves the game, likes to hit people.

CENTERS

58—LOVELL, Byron (6-0, 207, Junior, Honolulu, Hawaii)—Transferring to Montana for spring drills from Columbia Basin College in Washington, Byron made the All-Washington second team in 1966, and was considered a sure bet for first team honors in 1967 until sidelined early in the season by injury. Described as a "fiery player, a good hustler who loves football," Byron should be an invaluable asset to the Grizzlies.

53—NIMAN, Joe (6-0, 210, Sophomore, Miami, Fla.)—Another pleasant surprise, up from the 1967 frosh squad, Joe is not expected to start in 1968, but will certainly give the center position more than adequate depth. A former All-Miami high school gridder, he loves the game and will see some of it this fall.

52—SPARKS, Rick (5-8, 210, Senior, Butte)—Well, they say all Butte kids are tough, and Rick Sparks is no exception to that rule. Pushing aside bigger men for starting honors last fall despite a knee injury which slowed him somewhat, he made it with just plain toughness and desire. He missed spring drills due to an operation to rid him of his injury problems, so he will have to fight hard to maintain his starting spot.

55—URIE, Dave (6-4½, 247, Junior, Chico, Calif.)—Obviously big enough, Dave has the speed to make him almost a sure bet for starting honors in the fall. Described as a dependable blocker, Dave was here for spring ball after transferring from Shasta College in California. He was selected to the All-Conference team there last fall, and has two years of eligibility as a Grizzly.

QUARTERBACKS

10—BRUM, Ray (5-10, 183, Junior, Honolulu, Hawaii)—Ray is a former All-America junior college quarterback from Columbia Basin College who transferred to Montana last spring. An injury sustained midway through spring drills, just when he appeared to be getting in the groove, kept him out of the final intrasquad game and away from a chance of moving into the starting spot. A fine passer either on a drop back or a rollout, and also a good runner with speed and quickness.

11—CLOHERTY, Jack (6-0½, 185, Sophomore, Chicago, Ill.)—Jack missed almost all of spring drills this year because of a leg injury, but as starting frosh quarterback in 1967, he established himself enough in the coaches' eyes to make the squad this fall. An average passer and a better runner, Jack still needs more experience before he'll be completely ready to move into the lineup. He did complete 22 of 47 passes as a frosh for .468 per cent and 315 yards, with only one intercepted.

12—MULLINS, Pete (6-3, 180, Senior, San Francisco, Calif.)—Pete was second quarterback behind Ed Steiner all through last year, but as of spring drills he was number one man ahead of three others. The improvement in passing and running shown by Pete during spring drills impressed coaches plenty, and Pete will be tough to push aside this fall. A pinpoint passer, Pete threw 19 passes as a junior and completed 10 for 133 yards. With increased confidence and reliability, Pete could help raise Montana's passing attack to its highest levels in many years.

15—OPITZ, Jim (6-2½, 180, Sophomore, Missoula)—Of the quarterbacks participating in spring drills, Jim was the most pleasant surprise. He was injured as a freshman and saw no action in any of the four games, so he had to start from scratch during the spring. Passing with an unusual sidarm style, Opitz hit receivers often during spring scrimmages and earned his spot on the squad. With more work, he could be a good one.

TAILBACKS

36—BAIN, Doug (5-10, 185, Junior, Kalispell)—Though doubtful as a starter, Doug should see action as a substitute behind Robinson and Buzzard at tailback. A solid hitter with good speed and blocking ability, Doug saw limited action at both tailback and split end last season. With more work, could develop into a potential starter in the next two seasons.

20—BUZZARD, Mike (5-10, 175, Junior, Mt. Vernon, Wash.)—Actually brought to the University last spring from Everett College in Washington to back up Roy Robinson, Mike dazzled coaches and fans during drills with his speed and shifty running ability. With Robinson concentrating on track, Mike showed that he could be more than just a number one backup man. Will see plenty of action.

33—ROBINSON, Roy (5-11, 180, Junior, Glasgow)—One of the fastest men in University track history (9.4 in the 100, 21.1 in the 220), Roy should be a starter at tailback for the Grizzlies after missing much of the last season with an injury. While playing in only five games last season, Roy picked up 152 yards on 27 carries for an outstanding 5.6 yards per carry. Coaches expect him to carry from between 15 and 25 times per game this fall. A possible All-America at tailback, Roy has solid hitting power, good receiving hands, and tremendous balance.

SLOTBACKS

24—MORGAN, Gartha (5-11, 170, Senior, Seattle, Wash.)—Injuries bothered Gartha somewhat in 1967, but he appears healthy for the 1968 season and is a potential starter. With tremendous speed, better than last year's starter Rick Strauss, Morgan has to improve on pass receiving to really push Strauss for starting honors. Will see plenty of action nevertheless.

34—STRAUSS, Rick (6-0, 195, Senior, Polson)—After a shaky start in his first action midway through the season, Rick showed rapid improvement at the slotback spot and wound up as the second-leading Grizzly pass receiver (10 for 241 yards and 3 TD's) and the sixth leading rusher (170 on 36 carries for 4.7 per carry). He showed improved speed during 1968 spring drills, and continued to make key receptions. A probable starter this fall.

FULLBACKS

48—GABRIEL, Tony (6-2, 230, Junior, South River, N.J.)—Tony transferred in the spring from Cameron College in Oklahoma to replace pro-bound Bryan Magnuson, the 1967 leading Grizzly rusher. With excellent speed and blocking ability, Gabriel should start, but will be pushed by 1967 redshirt John McBurrows, who had, like Tony, a fine spring. Tony hits hard and with quickness, and could give opponents fits comparable to those handed out by Magnuson last year.

40—McBURROWS, John (6-2, 215, Sophomore, Englewood, N.J.)—Injured and redshirted in 1967, John maintains his sophomore status and will be eligible for two more years as a Grizzly following this season. Extremely quick and shifty, John boasts tremendous breakaway speed. With added work on blocking, he could develop into a fine fullback. A potential starter this year, will see lots of playing action.

LINEBACKERS

67—BEERS, Bob (5-9½, 211, Senior, Beaverton, Ore.)—What can one say about a linebacker like Bob Beers. An All-America in junior college, he earned first team honors last year as a junior at Montana, and appears likely to repeat this fall as a senior. One of the hardest hitters in University history, Beers smells out plays like one would expect an All-American to. A sure starter, Beers will probably call defensive signals again this year, and give opposing offensive units fits. A great one.

66—CORDOVA, Sandy (5-9, 200, Sophomore, Miami, Fla.)—Up from the frosh ranks, where he had an outstanding year as an offensive guard and a linebacker, Sandy will concentrate on the linebacker spot on the varsity this year. Doubtful as a starter, coaches consider Sandy a front-line reserve with good future potential.

47—PARESA, Greg (6-0, 200, Senior, Kahului, Hawaii)—After showing vast improvement during spring drills, Greg moved into the other starting position along with Beers and should be there when the Grizzlies open this fall. He will face a stiff challenge from Rich Unruh and sophs Wysel and Cordova, but should stay in there. A solid hitter with good defensive sense.

62—UNRUH, Rich (6-0, 190, Junior, Everett, Wash.)—Rich was a front-line reserve as a sophomore after transferring from Everett College last season. Against the University of the Pacific, he earned Big Sky player of the week honors as a sub when he intercepted two passes, returning one for 56 yards and the other for 52 yards and a touchdown. Will see action, undoubtedly.

44—WYSEL, Glen (5-10, 195, Sophomore, Lewistown)—Out during spring drills with a shoulder separation, Glen established himself during his frosh season with quickness and savage hitting. Though not starting material yet, coaches won't be afraid to put him in this year. A leading Grizzly golfer during the spring who could develop into a Beers-type linebacker.

DEFENSIVE BACKS

23—DOLAN, Pat (5-10, 169, Sophomore, Great Falls)—One of a fine group of sophomore defensive backs on the squad, Pat established himself as a freshman and during spring drills as one of the hardest hitters in the group, despite his lack of size. He'll be in there scrapping for a starting spot, although he may have to wait until his junior year to achieve it. A pleasant surprise.

30—FISKE, Karl (5-11, 175, Senior, Laurel)—Karl saw action in only three games as a starter last year, sustaining a concussion in his third outing which makes him a doubtful performer as a defensive back this season. However, Karl has been working out as a punter, and may be used in that capacity in 1968. A solid hitter who will probably be a starter if his injury is sufficiently healed.

25—GRAY, Mace (5-10½, 185, Senior, Baltimore, Md.)—A starter all season for the Grizzlies conference-leading defensive unit last year, Mace will probably stay in that spot this season. With good size and speed, he also worked at fullback during spring drills, and might be used as a reserve there if needed. A hard worker with more than adequate desire.

27—GUPTILL, Bob (5-11, 168, Sophomore, Great Falls)—Besides displaying great promise as a defensive back during spring drills, Bob also showed during his frosh season that he can work well as a split end offensively. Not big, he relies on speed, catty quickness, and good football sense, coupled with hard-hitting tactics. Could see lots of action in 1968.

28—NELSON, Larue (5-10, 168, Senior, New Orleans, La.)—A 9.6-second sprinter for the 1968 Grizzly track team, Larue obviously has the speed needed to play a defensive backfield position, and he hits plenty hard, too. A starter on the 1967 unit, he should hold that spot down this year. Also can be used at split end. Intercepted four passes in 1967.

32—O'NEILL, Mick (6-0, 195, Senior, Walla Walla, Wash.)—The third returning starter from the 1967 Grizzly defensive backfield, O'Neill should have the most solid hold on a starting spot of the three. Mick led the Big Sky Conference in pass interceptions in 1967, and was an All-League selection. He picked off six passes with several near interceptions to his credit. A fine performer and a hard hitter.

35—SCHRUTH, Pat (6-0, 180, Sophomore, Billings)—A fine offensive and defensive performer for the Cubs last fall, coaches would like to keep Pat on the defensive side, where they think he could develop into a fine prospect. He had a good spring, and should be up for a top reserve role, if not the fourth starting position in the defensive backfield this fall.

21—WAXHAM, John (6-0, 185, Sophomore, Mountlake Terrace, Wash.)—Although he was the leading rusher for the Cubs as a tailback and full-back last fall (269 yards on 53 carries, 5.1 avg.), John will concentrate on defensive work with the varsity. But coaches will keep him in mind as an offensive substitute should the need arise. A hard hitter, with good football sense for his young age, Waxham will be in there battling for a starting spot.

KICKER

45—WORRELL, Dan (5-10, 180, Sophomore, Great Falls)—Dan's place-kicking pranks will be highly regarded before the 1968 season is over. As a freshman, he booted successfully on seven of 10 field goal tries, and was 7 for 8 on PAT kicks to lead Cub scoring with 28 points. His field goal range goes up to 50 yards, and he is extremely accurate within 35-40 yards. Someone the Grizzlies really could have used in 1967, Worrell will make his mark this fall.

The 1968 University of Montana Grizzlies

No.	Name	Pos.	Ht.	Wt.	Class	Exp.	Home Town	Major
10	Ray Brum	QB	5-10	183	Jr.	JC	Honolulu, Hawaii	Business Administration
11	Jack Cloherty	QB	6-0½	185	So.	Fr.	Chicago, Ill.	Business Administration
12	Pete Mullins	QB	6-3	180	Sr.	1	San Francisco, Calif.	Political Science
15	Jim Opitz	QB	6-2½	180	So.	Fr.	Missoula	History and Political Science
20	Mike Buzzard	HB	5-10	175	Jr.	JC	Mt. Vernon, Wash.	Business Administration
21	John Waxham	HB	6-0	185	So.	Fr.	Mountlake Terrace, Wash.	Business Administration
23	Pat Dolan	HB	5-10	169	So.	Fr.	Great Falls	Business Administration
24	Gartha Morgan	HB	5-11	170	Sr.	1	Seattle, Wash.	Health & PE
25	Maceo Gray	HB	5-10½	185	Sr.	1	Baltimore, Md.	Health & PE
27	Bob Guptill	HB	5-11	168	So.	Fr.	Great Falls	Business Administration
28	Larue Nelson	HB	5-10	168	Sr.	1	New Orleans, La.	Education
29	Tim Gallagher	E	6-2	214	So.	Fr.	Kalispell	General
30	Karl Fiske	HB	5-11	175	Sr.	2	Laurel	Physical Therapy
32	Mick O'Neill	HB	6-0	195	Sr.	1	Walla Walla, Wash.	Education
33	Roy Robinson	HB	5-11	180	Jr.	1	Glasgow	Art
34	Rick Strauss	HB	6-0	195	Sr.	2	Polson	Health & PE
35	Pat Schrueth	HB	6-0	180	So.	Fr.	Billings	Liberal Arts
36	Doug Bain	HB	5-10	185	Jr.	1	Kalispell	Economics
40	John McBurrows	FB	6-2	215	So.	RS	Englewood, N.J.	Business Administration
44	Glen Wysel	LB	5-10	195	So.	Fr.	Lewistown	Pre-Medicine
45	Dan Worrell	K	5-10	180	So.	Fr.	Great Falls	Biology
47	Greg Paresa	LB	6-0	200	Sr.	1	Kahului, Maui, Hawaii	Health & PE
48	Tony Gabriel	FB	6-2	230	Jr.	JC	South River, N.J.	Undecided
52	Rick Sparks	C	5-8	210	Sr.	2	Butte	Education
53	Joe Niman	C	6-0	210	So.	Fr.	Miami, Fla.	Business Administration
54	Joe Stoddard	T	6-6	240	Jr.	JC	Gig Harbor, Wash.	Health & PE

55	Dave Urie	C	6-4½	247	Jr.	JC	Chico, Calif.	Business Administration
56	Ed Dawson	T	6-3	218	Sr.	JC	Shelton, Wash.	Health & PE
58	Byron Lovell	C	6-0	207	Jr.	JC	Honolulu, Hawaii	Business Administration
60	Joe Lyons	G	6-1	195	So.	Fr.	Kalispell	Business Administration
61	Tom Lavery	G	5-10	195	Jr.	RS	Chicago, Ill.	Health & PE
62	Rich Unruh	G	6-0	190	Jr.	Jr.	Everett, Wash.	Education
63	John Talolutu	LB	5-11	195	Jr.	JC	Honolulu, Hawaii	Undecided
64	Ole Hedstrom	G	6-0	210	Jr.	Jr.	Laurel	Physical Therapy
65	Bill Waters	G	6-1	225	Jr.	Jr.	Troy	Secondary Education
66	Sandy Cordova	G	5-9	200	So.	Fr.	Miami, Fla.	Health & PE
67	Bob Beers	LB	5-9½	211	Sr.	Jr.	Beaverton, Ore.	Health & PE
68	Butch Ortiz	G	5-8½	175	Sr.	Jr.	Monterey Park, Calif.	Physical Therapy
70	Lon Howard	G	5-11	230	Sr.	Jr.	Centralia, Wash.	Health & PE
71	Bill Gutman	T	6-2	245	Jr.	JC	Seattle, Wash.	Physical Therapy
72	Ron Garske	T	6-3	234	Jr.	JC	Chico, Calif.	Undecided
73	Dennis Thrasher	T	6-3½	245	Jr.	JC	Yuba City, Calif.	Undecided
74	Ray Stachnik	T	6-2	235	So.	Fr.	Chicago, Ill.	History and Political Science
75	Larry Stranahan	T	6-0	225	Jr.	Jr.	Missoula	Health & PE
76	Tuufuli Uperesa	T	6-3	255	Jr.	JC	Honolulu, Hawaii	Education
77	Mike McCann	G	6-2	212	Jr.	Jr.	Renton, Wash.	Health & PE
78	Fred Tubbs	T	6-2	223	Sr.	Jr.	Honolulu, Hawaii	Sociology
79	John Stedham	T	6-4½	245	Jr.	Jr.	Chehalis, Wash.	Business Administration
80	Al Luis	E	5-10	190	Jr.	JC	Orland, Calif.	Business Administration
81	Ron Baines	E	5-11	175	Sr.	Jr.	Tacoma, Wash.	Education
82	Jim Enos	E	6-0	195	Jr.	RS	Port Angeles, Wash.	Health & PE
83	Mike Glennon	E	6-1	200	Jr.	Jr.	Billings	General
84	Herb White	E	5-10	190	Sr.	Jr.	Ecorse, Mich.	Health & PE
85	Jim Notaro	E	6-1	201	So.	Fr.	Tampa, Fla.	Undecided
86	Jim DeBord	E	6-2	195	So.	Fr.	Pasco, Wash.	General
87	Willie Postler	T	6-4	238	So.	Fr.	Vancouver, B.C.	General
88	Jim Kelly	E	6-0	224	Sr.	Jr.	Seattle, Wash.	Health & PE

The Breakdown

1968 UNIVERSITY OF MONTANA GRIZZLIES

LETTERMEN LOST

(12)

Ends: Gib Brumback, Larry Huggins.

Tackles: Wes Appelt, Bob Graham.

Quarterbacks: Jim Searles, Ed Steiner.

Halfbacks: Willie Jones, Don Molloy, Gary Smith.

Fullbacks: Rod Lung, Bryan Magnuson.

Punter: Dewey Allen.

LETTERMEN RETURN- ING (26)

Ends: Ron Baines, Jim Kelly, Herb White, Mike Glennon.

Tackles: Ed Dawson, Ole Hedstrom, John Stedham, Larry Stranahan, Fred Tubbs.

Guards: Lon Howard, Mike McCann, Butch Ortiz, Bill Waters.

Center: Rick Sparks.

Quarterback: Pete Mullins.

Halfbacks: Doug Bain, Karl Fiske, Maceo Gray, Gartha Morgan, Larue Nelson, Mick O'Neill, Roy Robinson, Rick Strauss, Rich Unruh.

Linebackers: Bob Beers, Greg Paresa.

REDSHIRTS RETURN- ING (3)

End: Jim Enos.

Guard: Tom Lavery.

Fullback: John Mc-Burrows.

TRANSFERS (12)

End: Al Luis.

Tackles: Ron Garske, Bill Gutman, Joe Stod-

dard, Dennis Thrasher, Tuufuli Uperesa.

Centers: Byron Lovell, Dave Urie.

Quarterback: Ray Brum.

Halfback: Mike Buz-zard.

Fullback: Tony Ga-briel.

Linebacker: John Tal-olutu.

SOPHOMORES (16)

Ends: Jim DeBord, Tim Gallagher, Jim No-taro.

Tackles: Willie Postler, Ray Stachnik.

Guard: Joe Lyons.

Center: Joe Niman.

Quarterbacks: Jack Cloherty, Jim Opitz.

Halfbacks: Pat Dolan, Bob Guptill, Pat Schrueth, John Waxham.

Linebackers: Sandy Cordova, Glen Wysel.

Kicker: Dan Worrell.

PLAYER TOTALS BY CLASS

Seniors	17
Juniors	23
Sophomores	17

PRONUNCIATION GUIDE

Jack Cloherty (CLO-er-tee)

Jim Enos (EE-nus)

Karl Fiske (FISS-key)

Joe Niman (NEE-mun)

Greg Paresa (Puh-REE-suh)

Ray Stachnik (STACK-nick)

John Talolutu (Taa-loe-LOO-too)

Tuufuli Uperesa (Too-FOO-lee Oo-puh-REE-suh)

Grizzly All-American

BOB BEERS, LINEBACKER

Bob Beers, following the 1967 season, became the first Grizzly in history to be named as a first-team All-America in football.

Beers returns as a senior this fall, and appears a sure bet to repeat the honor he won as a junior and after his second year at Columbia Basin College in Pasco, Wash.

Bob makes up for his relatively small size (5-9, 211) with a fierce competitive spirit that earned him recognition as one of the hardest hitting backers in the United States.

As a junior in 1967, **Bob** was the key to a strong Grizzly defense which led the Big Sky Conference. He averaged 18 tackles per game, with an average of nine of those unassisted.

As defensive captain, he called the signals for the league-leading unit. Opposing coaches marveled at his great pursuit and hitting ability.

As one might expect, **Bob** led the Grizzlies in tackles in every one of the 10 games he played in last season. And despite his lack of height, he did a fantastic job of defending against the forward pass to receivers that towered over him.

His saving trait as a linebacker was his ability to fight off blockers of any size to make a tackle.

His outstanding performances: 21 tackles against powerful Utah State and 19 against small-college titan Northern Arizona.

WHAT THE COACHES SAY

JACK SWARTHOUT, UNIVERSITY OF MONTANA—"Bob Beers is the best linebacker any of the coaches on my staff has ever coached. A real leader, he has been the outstanding defensive man in every game we've played. He has continually make key tackles, and has made several game-saving plays on the goal line, either stopping a ball carrier cold or causing a fumble."

CHUCK MILLS, UTAH STATE—"A tremendous football player, and one of the best linebackers we've seen this year. Bob Beers is a good competitor who hustles all the way. He gave us all we wanted and then some. He had the most hits of anyone on either team in our game."

JOE SALEM, UNIVERSITY OF SOUTH DAKOTA—"Bob Beers is the best linebacker we played against all year. In our game he stopped our best and strongest runners cold and short of a first down several times. He was certainly the best player on the field that night. If there is a better linebacker in the country, then I want to see him—but not play against him."

SARKIS ARSLANIAN, WEBER STATE COLLEGE—"Pound for pound, Bob Beers is the finest linebacker I have seen for many years. He has great balance, desire, and certainly does an outstanding job. He was in our hair all night."

LEO MCKILLIP, IDAHO STATE UNIVERSITY—"Bob Beers fought off blockers and made tackles all over the field against us. We attempted to run away from him."

University of North Dakota



Game Number One

Sept. 14—8 p.m. MDT

At Billings, Montana

Daylis Stadium (6,500)

COACH OLSON

SIoux FACTS

Location.....	Grand Forks
Enrollment (Est.).....	7,600
President.....	Dr. George W. Starcher
School Colors.....	Green and White
Team Nicknames.....	Sioux, Nodaks
Head Coach.....	Jerry Olson
Assistant Coaches.....	Bob Dawson, Gene Murphy, Pete Porinsh, Gary Burke, Jim Driscoll, one to be named
Athletic Director.....	Leonard R. Marti
Sports Information Director.....	Lee Bohnet
Athletic Trainer.....	Tom Waugh
Conference.....	North Central
Lettermen Lost.....	14
Lettermen Returning.....	24

Record with Montana . . . Won 5, Lost 7, One Tie

1968 SCHEDULE	1967 RESULTS (4-6)
Sept. 14—Montana	10 Northern Arizona 39
Sept. 21—NORTHERN IOWA	14 Montana 19
Sept. 28—SOUTH DAKOTA	14 Morningside 0
Oct. 12—South Dakota State	0 Northern Iowa 7
Oct. 19—N. DAKOTA STATE	9 South Dakota 6
Oct. 26—Augustana	9 South Dakota State 7
Nov. 2—Morningside	10 North Dakota State 34
Nov. 9—MONTANA STATE	16 Montana State 20
	35 Augustana 7
	6 Northern Michigan 25

1968 SIoux OUTLOOK

North Dakota will be under new head coach Jerry Olson, not really new since he was number one assistant for seven years under departed Marv Helling. Olson will have 24 lettermen for the 1968 season. Defensive strength should be equal to last year when the Sioux were only 19 points away from a 7-3 season. UND had a 4-6 record and placed third in the North Central Conference with a 4-2 mark. Offensively the Sioux could be improved, depending on how talented but inexperienced newcomers develop at quarterback, guard and running back. Both junior Mike Conner and sophomore John Boyer are good passers, which means the Sioux will not abandon their fan-pleasing aerial game. New people are going to have to make Olson's grab-bag multiple-T running game work. Olson feels he has adequate fullbacks in Lud Fettig and Jerry Strain, both lettermen. Best of the new halfbacks are Dave Williamson and Don Sessions. The offensive line could be excellent with such proven performers as flanker Bill Predovich, end Vern Praus, tackle Bill Gresko and guard Coy Tatum. Newcomers appear able enough to plug offensive line holes. The lack of defensive strength is in the backfield, where only one man returns. However, three others saw action last year. The overall outlook is favorable.

University of South Dakota



Game Number Two

Sept. 21—7:30 p.m. CDT
 At Vermillion, South Dakota
 Inman Stadium (10,000)

COACH SALEM

COYOTE FACTS

Location	Vermillion
Enrollment (Est.).....	5,000
President.....	Dr. Edward Q. Moulton
School Colors.....	Vermillion and White
Team Nickname.....	Coyotes
Head Coach.....	Joe Salem
Assistant Coaches.....	Tom Warner, Dan Powers, Larry Donovan
Athletic Director.....	John O. Roning
Sports Information Director.....	Bud Brown
Athletic Trainer.....	Rob Williams
Conference.....	North Central
Lettermen Lost.....	12
Lettermen Returning.....	23

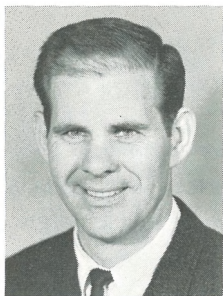
Record with Montana . . . Won 3, Lost 2

1968 SCHEDULE		1967 RESULTS (2-8)	
Sept. 14—Mankato State	20	Wayne State	6
Sept. 21—MONTANA	3	Montana	7
Sept. 28—North Dakota	3	Augustana	28
Oct. 5—N. DAKOTA STATE	6	North Dakota	9
Oct. 12—Morningside	14	Morningside	23
Oct. 19—S. DAKOTA STATE	14	South Dakota State	42
Oct. 26—NORTHERN IOWA	0	North Dakota State	34
Nov. 2—DRAKE	7	Northern Iowa	15
Nov. 9—Augustana	37	Drake	35
Nov. 16—Colorado State College	20	Omaha	27

1968 COYOTE OUTLOOK

Joe Salem, the University of South Dakota's young head football coach, will open his third season at the Coyote helm this fall with 23 returning lettermen. While admittedly prospects should be much better with that much experience returning, the USD grid staff is reserving judgement on just what 1968 will bring. Judging from the spring practice lineup, only seven seniors appear in contention for starting berths on the top 22, while at least that many sophomores could be among the regulars. Salem expressed pleasure with a corps of big, strong running backs who appeared to run with authority in spring drills, and with experienced quarterback Jim Foster, back as a junior. The running backs include junior fullback Dan Hankins, halfbacks Steve Chambers and Bob Clark and sophomores Bob Koch (out in 1967 with a knee injury), Steve Amundson and Brian Winter. The latter two were starters on USD's unbeaten freshman team last fall. On the line of scrimmage the Coyotes show good size and mobility, but the main concern of the staff is developing depth. The defensive unit may be a question mark. USD's kicking game may rank with the best in the conference, based on 1967 performances, with Chuck Koch handling place-kicking duties and Dick Brownell doing the punting. Developing depth at all positions remains the primary need listed by Salem.

Portland State College



Game Number Three

Sept. 28—1:30 p.m. MDT

In Missoula, Montana

Dornblaser Stadium (10,000)

COACH READ

VIKING FACTS

Location.....	Portland, Oregon
Enrollment (Est.)	9,500
President.....	To be named
School Colors.....	Forest Green and White
Team Nicknames.....	Vikings, Viks
Head Coach.....	Don Read
Assistant Coaches.....	Roy Love, Len Younce, George Dyer, Gary Hamblett, Mickey Gray, Roy Malensky
Athletic Director.....	J. Neil (Skip) Stahley
Sports Information Director.....	Chuck Charnquist
Athletic Trainer.....	Ed Gause
Conference.....	NCAA Independent
Lettermen Lost.....	11
Lettermen Returning.....	24

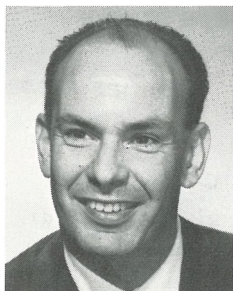
Record with Montana . . . Won 0, Lost 3

1968 SCHEDULE	1967 RESULTS (4-6-0)
Sept. 14—Idaho State	36 Southern Oregon 13
Sept. 21—MONTANA STATE	7 Montana State 52
Sept. 28—Montana	0 Linfield 24
Oct. 5—FRESNO STATE	21 Sacramento State 23
Oct. 12—WEBER STATE	21 West. Washington 16
Oct. 19—Eastern Washington	61 British Columbia 0
Oct. 26—WEST. WASHINGTON	13 Central Washington 6
Nov. 2—San Fernando Valley	21 Weber State 40
Nov. 9—SIMON FRASER	7 Montana 55
Nov. 16—Southern Oregon	21 Idaho State 22

1968 VIKING OUTLOOK

A new coach, a new offense, a good stock of returning players and the toughest schedule ever to face a Portland State team—these are the ingredients that pose a lot of "iffy" questions about the 1968 football campaign. Coach Don Read, energetic and dedicated, admits he and the Vikings are facing a Herculean task. Getting a late start in recruiting and making preparations for the tough campaign haven't helped. The Vikings will show the most strength in their passing game. Here Ed Gorman, the fifth-ranked passer among the nation's small colleges, returns for his final season. With him comes Don Suloff (52 catches) at split end; Danny Withers (42 catches) at flanker, and Dennis Birenbaum (37 catches), also at flanker. In addition, JC All-American Randy Nelson is another fine receiver. The running game should be improved with several returning and some new backs, including lettermen fullbacks Jim Heard and Joe Talbott with newcomer halfbacks Lenny Andersen and Chris Wood. Although six of seven offensive line starters return, shifting may be needed to the new unbalanced slot-T offense. Best lineman should be 255-pound senior tackle Tom Fee. There are lots of open positions in the defensive line. Linebackers Brett Crouser and Dale Pfeleiger look good, but more help will be needed behind the line. A major rebuilding job is necessary in the secondary.

Utah State University



COACH MILLS

Game Number Four

Oct. 5—1:30 p.m. MDT

In Missoula, Montana

Dornblaser Stadium (10,000)

AGGIE FACTS

Location	Logan
Enrollment (Est.).....	9,000
President.....	Glen L. Taggart
School Colors.....	Navy Blue and White
Team Nicknames.....	Aggies, Utags, State
Head Coach.....	Chuck Mills
Assistant Coaches.....	Bo Bolinger, Walt Corey, Max McCartney, Chris Pella, Al Prukop
Athletic Director.....	Frank (Buss) Williams
Sports Information Director.....	Harvey Kirkpatrick
Athletic Trainer.....	Howard Adams
Conference.....	NCAA Independent
Lettermen Lost.....	20
Lettermen Returning.....	22

Record with Montana . . . Won 24, Lost 8

1968 SCHEDULE	1967 RESULTS (7-2-1)
Sept. 14—NEW MEXICO STATE	3 Wichita State 3
Sept. 21—Wyoming	44 West Texas State 27
Sept. 28—WICHITA STATE	9 New Mexico State 10
Oct. 5—Montana	28 Memphis State 14
Oct. 12—Wisconsin	7 Pacific 6
Oct. 19—Pacific	14 Colorado State 17
Oct. 26—WEST TEXAS STATE	30 Brigham Young 9
Nov. 9—Brigham Young	20 Montana 14
Nov. 23—UTAH	19 Utah 18
Nov. 30—San Diego State	31 San Diego State 25

1968 AGGIE OUTLOOK

Football miracles were performed at Utah State in 1967. New coach Chuck Mills took over a sagging program and produced a team which won seven, lost only two (by one- and three-point margins) and tied one. Graduation losses took a heavy toll, particularly on a strong defensive unit. The Utags should have an explosive offensive attack, built around an all-veteran backfield combination of John Pappas at quarter, Altie Taylor and Frank Nunn at the running and blocking spots and Mike O'Shea at flanker. Along the offensive line, USU lost both of its ends, a tackle, guard and center, and will be counting heavily on junior college transfers who can move in immediately. Defensively, the Utags have to start practically from scratch, having lost both ends, both tackles, both linebackers and two defensive backs who were mainstays for three seasons. Phil Olsen, the 6-5, 255-pound "little" brother of Los Angeles Ram all-pro performer Merlin, and safetyman Chuck Detwiler are the top defensive returnees and both will be bidding for All-America recognition in 1968. Olsen and letterman Ray Watrin (6-2, 235) at ends and letterman Doug Cosnell (6-5, 250) and transfer Mick Workman (6-3, 260) give the Aggies good size up front.

University of Idaho



COACH McNEASE

Game Number Five

Oct. 12—1:35 p.m. PDT

At Moscow, Idaho

Neale Stadium (18,000)

VANDAL FACTS

Location	Moscow
Enrollment (Est.).....	6,300
President.....	Ernest W. Hartung
School Colors.....	Silver and Gold
Team Nickname.....	Vandals
Head Coach.....	Y. C. McNease
Assistant Coaches.....	Harvey Griffin, Ed Troxel, Gary Sloan, Benson Holland, Ron Robbins, Mike Whiles
Athletic Director.....	Paul Ostyn
Sports Information Director.....	Bob Maker
Athletic Trainer.....	Dennis Channing
Conference.....	Big Sky
Lettermen Lost.....	5
Lettermen Returning.....	16

Record with Montana . . . Won 35, Lost 13, One Tie

1968 SCHEDULE	1967 RESULTS (4-6-0)
Sept. 14—Montana State	6 Pacific 42
Sept. 21—Washington State	30 Fresno State 14
Sept. 28—Idaho State	16 Idaho State 6
Oct. 5—PACIFIC (Boise)	14 Montana State 41
Oct. 12—MONTANA	19 Montana 14
Oct. 19—Oregon	6 Oregon 31
Oct. 26—Washington	28 Parsons 27
Nov. 2—WEBER STATE	17 Weber State 28
Nov. 9—San Jose State	14 Washington State 52
Nov. 16—Houston	6 Houston 77

1968 VANDAL OUTLOOK

A new look for Idaho Vandal football is in prospect for the 1968 season with the arrival of Y. C. McNease, new head coach. McNease brings a spectacular pro offense to the Vandal camp with promises of throwing the ball some 40-60 times each game. McNease, who came to the Vandals from the University of Michigan, where he was an assistant under "Bump" Elliott, has gathered a fine staff. It looks like Steve Olson, 6-4 sophomore redshirt from Lewiston, will be the top quarterback. He will have the talents of Jerry Hendren, who set all Idaho receiving records last season, to work with as his main target. Jeff Guillory, a junior, appears to be the top flanker. Sophs Ron Davis and Mike Wiscombe are two other outstanding prospects at running back, along with vets Jim Pearsall and Rob Young, both seniors. Up front, Jim Thiemens, All-America offensive tackle, returns for his senior year, and will have help from Gary Grove at tackle. Defensively, Joe Tasby and Roosevelt Owens are returning as junior linebackers.

Idaho State University



Game Number Six

Oct. 19—2 p.m. MST

At Pocatello, Idaho

ISU Stadium (6,000)

COACH CAVANAUGH

BENGAL FACTS

Location	Pocatello
Enrollment (Est.)	5,000
President	William E. (Bud) Davis
School Colors	Orange and Black
Team Nickname	Bengals
Head Coach	Ed Cavanaugh
Assistant Coaches	Randy Tyson, Tom Lovat, Tom Jewell, Gene Dahlquist, Jeff Fries, Paul Wargo
Athletic Director	Milton (Dubby) Holt
Sports Information Director	Glenn Alford
Athletic Trainer	Phil Luckey
Conference	Big Sky
Lettermen Lost	18
Lettermen Returning	16

Record with Montana . . . Won 3, Lost 6

1968 SCHEDULE	1967 RESULTS (1-9-0)
Sept. 14—PORTLAND STATE	3 New Mexico 24
Sept. 21—Fresno State	22 South Dakota State 24
Sept. 28—IDAHO	6 Idaho 16
Oct. 12—Montana State	0 Tulsa 58
Oct. 19—MONTANA	7 Montana State 24
Oct. 26—Weber State	0 Montana 20
Nov. 2—Boise College	7 Weber State 19
Nox. 9—South Dakota State	6 Hawaii 21
Nov. 16—Nebraska (Omaha Br.)	0 Parsons 24
	22 Portland State 21

1968 BENGAL OUTLOOK

Strong backs and a questionable line sums up Idaho State's 1968 football outlook. The Bengals are notably good in the defensive backfield with all four starters returning, including Little All-America candidate Leroy Harris. Offensive running backs are plentiful and the quality also appears to be high. Fullbacks Joe Clark and Greg Esplin, both lettermen, are waging a two-way battle for the full-back slot, and Clark apparently has the edge. Letterman Bill Brown, JC transfer Lewis Cook and top frosh runner Rick Hulbert are fighting for the tailback slot, and that fight wasn't over by the conclusion of spring workouts. Record-holding quarterback Bill Ingram is gone, and his replacement will come from either letterman Larry Kerychuk, also a fine safety, or top sophomore Jerry Dunne. Another quarterback, frosh Joe Petrone, will probably stick to kicking as he has a 59-yard field goal to his credit. Top split receivers appear to be letterman Jim Rackley and 9.6-second sprinter Ed Bell, with Bill Manchuk and Rick Nykorak going after the tight end spot. Although both line-backers were erased through graduation, there are several bright candidates for the spots. Two of the best appear to be transfers Ambrose Costa and Ray Capitanelli. The line is thin, with only lettermen Larry Bender, guard, Joe McGrath and Bob Paoli, centers, and George Trenkle, defensive tackle, returning.

Montana State University



Game Number Seven

Nov. 2—1:30 p.m. MST

In Missoula, Montana

Dornblaser Stadium (10,000)

COACH PARAC

BOBCAT FACTS

Location	Bozeman
Enrollment (Est.).....	6,800
President.....	Dr. Leon H. Johnson
School Colors.....	Blue and Gold
Team Nickname.....	Bobcats
Head Coach.....	Tom Parac
Assistant Coaches.....	Joe Tiller, Dick Roach, Frank McGaughy, Frank Smith
Athletic Director.....	Gene Bourdet
Sports Information Director.....	Ken Nicholson
Athletic Trainer.....	Chuck Karnop
Conference.....	Big Sky
Lettermen Lost.....	18
Lettermen Returning.....	22

Record with Montana . . . Won 20, Lost 42, Five Ties

1968 SCHEDULE	1967 RESULTS (7-3-0)
Sept. 14—IDAHO (Great Falls)	6 North Dakota State 24
Sept. 21—Portland State	26 West Texas State 35
Sept. 28—SAN DIEGO STATE	52 Portland State 7
Oct. 5—WEST TEXAS STATE	21 Fresno State 20
Oct. 12—IDAHO STATE	41 Idaho 14
Oct. 19—Weber State	24 Idaho State 7
Oct. 26—NORTHERN ARIZONA	21 Weber State 6
Nov. 2—Montana	20 North Dakota 16
Nov. 9—North Dakota	14 Montana 8
Nov. 16—Fresno State	3 San Diego State 14

1968 BOBCAT OUTLOOK

Tom Parac, who became Bobcat coach last winter, faces a major rebuilding job in 1968. Many players graduated last spring, leaving gaping holes to be filled. Parac will have difficulty trying to match last year's 7-3 mark and second straight Big Sky league title. Losses were heavy in the offensive line, but it's on defense where the situation is most critical. The defensive unit must be rebuilt almost from scratch. If an adequate tailback can be found to replace All-America Don Hass, the Bobcats could again have the league's best backfield. Many spots have to be filled in the offensive line, but defense is what worries Parac most. Only two genuine regulars return to the defensive unit. Returning, however, are some lettermen who logged a lot of valuable time and sometimes started in 1967. Still, the problem is awesome. Parac must come up with an end, two tackles, a middle guard, two sidebacks and a safety.

Weber State College



Game Number Eight

Nov. 9—1:30 p.m. MST

In Missoula, Montana

Dornblaser Stadium (10,000)

COACH ARSLANIAN

WILDCAT FACTS

Location.....	Ogden, Utah
Enrollment (Est.).....	7,500
President.....	Dr. William P. Miller
School Colors.....	Purple and White
Team Nickname.....	Wildcats
Head Coach.....	Sarkis Arslanian
Assistant Coaches.....	Tom Ramage, Doug Hunt, Bud Belnap, Ralph Hunter, Lynn Corbridge
Athletic Director.....	Dale L. Gardner
Sports Information Director.....	Don Spainhower
Athletic Trainer.....	Ed Garvanian
Conference.....	Big Sky
Lettermen Lost.....	17
Lettermen Returning.....	20

Record with Montana . . . Won 2, Lost 4

1968 SCHEDULE

Sept. 14—South Dakota State
Sept. 21—CAL STATE (LA)
Sept. 28—Northern Arizona
Oct. 5—BOISE COLLEGE
Oct. 12—Portland State
Oct. 19—MONTANA STATE
Oct. 26—IDAHO STATE
Nov. 2—Idaho
Nov. 9—Montana
Nov. 16—SAN FERNANDO STATE

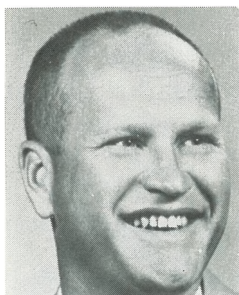
1967 RESULTS (6-4-0)

29 Northern Arizona	28
12 San Diego State	58
12 Montana	13
13 Cal State (LA)	3
14 Parsons	31
6 Montana State	21
19 Idaho State	7
28 Idaho	17
40 Portland State	21
20 Western State	0

1968 WILDCAT OUTLOOK

Line depth and strength looks good, but the defensive secondary and offensive backfield need some help. Only three starters are back from the 1967 offensive eleven, and six are back from the defensive unit. Many new faces were present during spring ball and there are a bunch of new ones this fall. Gone are All-Americans Lee White and Jim Schmedding. Also missing are seven other gridders who were drafted or signed by the pros. The 1968 squad will have more players of equal ability and will probably lack the superstar. The Wildcats do have some athletes who could develop into headline grabbers, like defensive back Luther White, flanker Dave MacGillivray, running back-receiver Randy Montgomery, and defensive linemen Carter Campbell, Russ Melby and Halvor Hagen. Tight end Emmett White looks like a good one as does any one of several top linebackers. Punter-defensive back Steve Smith should reap his share of honors, and guard Walt Baker will bear watching. Coach Arslanian has 20 returning lettermen, 20 JC transfers and 9 redshirts to work with. A busy recruiting schedule over the summer brought 10 to 15 newcomers to beef up the weak secondary and offensive backfield. The Wildcats could develop into a title contender.

Northern Arizona University



Game Number Nine

Nov. 16—1:30 p.m. MST

At Flagstaff, Arizona

Lumberjack Stadium (8,350)

COACH MacDONALD

LUMBERJACK FACTS

Location	Flagstaff
Enrollment (Est.)	8,000
President	J. Lawrence Walkup
School Colors	Blue and Gold
Team Nicknames	Lumberjacks, Axers
Head Coach	Andy MacDonald
Assistant Coaches	Owen Dejanovich, Ken Heizer
Athletic Director	Dr. Ted Keck
Sports Information Director	Norman R. Borg
Athletic Trainer	To be named
Conference	Independent
Lettermen Lost	16
Lettermen Returning	17

Record with Montana . . . Won 1, Lost 1

1968 SCHEDULE	1967 RESULTS (5-5-0)
Sept. 14—Drake University	39 North Dakota 10
Sept. 21—LONG BEACH STATE	28 Weber State 29
Sept. 28—WEBER STATE	0 E. New Mexico 7
Oct. 5—Omaha	46 Whittier 29
Oct. 12—Northern Illinois	41 Omaha 13
Oct. 19—SAN FERNANDO STATE	34 Western Illinois 0
Oct. 26—Montana State	26 Long Beach State 21
Nov. 2—HIRAM SCOTT	7 Montana 10
Nov. 9—E. New Mexico	7 E. Cent. Oklahoma 13
Nov. 16—MONTANA	0 New Mexico State 90

1968 LUMBERJACK OUTLOOK

"Good running backs and receivers—that's what we need from the crop of newcomers to fill the gaping hole left in our offense as a result of graduation last spring," is the way Northern Arizona University's head coach Andy MacDonald pictures the Lumberjacks for this fall. With only 17 lettermen among the 26 returnees, the newcomers have a Herculean task of adequately filling the vacancies. There are only six returning starters on the offensive unit, a number of whom also played defense. MacDonald's overall view of the squad after spring ball indicates that the defense should again be the Lumberjacks' strongest point, if new defensive backs come through. The offensive line needs strengthening, especially on the left side. MacDonald hopes that among the newcomers there will be talent to take over where quarterbacks Jim Velasquez and Ted James, fullback Gary Barnes, flanker Rich O'Hara, and AP Little All-America defensive end Bill Hanna left off. A spring game injury to Jim Fuller, outstanding offensive end and defensive back, has forced MacDonald to seek additional replacements. Fuller will be sidelined for this season. Last season a raft of injuries to key linemen and to top receivers severely hampered the Lumberjacks going into the last three games and resulted in losses that spoiled the 5-2 mark up to that point.

The Last Ten Years

UM	1958	Opp.	UM	1963	Opp.
6	Utah	20	16	Brit. Columbia	0
14	Wyoming	21	0	Wyoming	35
16	New Mexico	44	13	North Dakota U	19
0	Denver U	29	0	Brigham Young	27
13	Utah State U	27	13	Idaho State U	14
12	Brigham Young	41	6	Utah State U	62
7	Colorado State U	57	6	New Mexico	24
6	Idaho	14	13	Weber State	19
6	Montana State	20	3	Montana State	18
13	San Diego U	24	12	Colorado State U	20
	(0-10-0)			(1-9-0)	

UM	1959	Opp.	UM	1964	Opp.
19	North Dakota U	27	29	Brit. Columbia	24
0	Wyoming	58	7	Pacific	23
12	Brigham Young	0	0	New Mexico	20
12	Denver U	27	0	Utah State U	41
0	Utah State U	28	20	Weber State	12
14	New Mexico	55	7	Western Illinois	0
16	Colorado State U	26	7	Idaho State U	14
6	Montana State	40	6	Montana State	30
6	Idaho	9	7	S. Diego Marines	43
	(1-8-0)			(3-6-0)	

UM	1960	Opp.	UM	1965	Opp.
21	North Dakota U	14	13	Utah	28
0	Wyoming	14	14	South Dakota	15
12	Utah State U	14	16	Idaho State U	0
18	Idaho	14	15	Weber State	14
26	Denver U	12	21	Utah State U	54
6	Brigham Young	7	6	Idaho	35
26	Colorado State U	14	14	Pacific	13
10	Montana State	6	7	Montana State	24
6	Utah	16	14	West. Michigan	17
7	New Mexico	24	33	Portland State	7
	(5-5-0)			(4-6-0)	

UM	1961	Opp.	UM	1966	Opp.
0	Wyoming	29	6	North Dakota U	30
6	Utah State U	54	7	South Dakota	21
40	New Mexico	8	10	Portland State	0
6	Brigham Young	7	0	Weber State	28
12	Utah	24	0	Pacific	28
22	Colorado State U	19	14	Idaho State U	17
9	Montana State	10	8	Northern Arizona	34
14	Idaho	16	0	Montana State	38
	(2-6-0)		6	Idaho	40
				(1-8-0)	

UM	1962	Opp.	UM	1967	Opp.
0	Wyoming	13	19	North Dakota U	14
8	North Dakota U	14	7	South Dakota	3
20	Utah State U	43	13	Weber State	12
22	Idaho	16	21	Pacific	7
25	Weber College	6	14	Idaho	19
0	Brigham Young	27	20	Idaho State	0
22	Idaho State U	15	10	Northern Arizona	7
36	Montana State	19	8	Montana State	14
12	New Mexico	41	14	Utah State U	20
16	Colorado State U	15	55	Portland State	7
	(5-5-0)			(7-3-0)	

University of Montana

1967 Final Statistics

TEAM STATISTICS	UM	OPP.
Total first downs	157	149
First downs rushing	114	85
First downs passing	31	56
First downs by penalties	12	8
Total plays rushing	526	491
Total yards rushing	2,482	1,927
Yards lost rushing	201	297
Net yards rushing	2,281	1,630
Passes attempted	127	208
Passes completed	47	94
Passes had intercepted	11	19
Net yards passing	711	1,264
Total plays offense	574	628
Total yards offense	2,992	2,894
Punts	59	61
Yards punted	2,375	2,375
Punting average	40.2	38.9
Fumbles	28	20
Fumbles lost	14	13
Penalties	40	51
Yards penalized	401	402
Touchdowns rushing	15	7
Touchdowns passing	9	7
Touchdowns others	2	0
Total touchdowns	26	14
PAT kicks	20/24	10/13
PAT run and pass	1/2	0/1
Field goals	1/7	3/9
Safeties	0	0
Total Points	181	103

SCORING	TD	K	R	P	FG	Pts
Magnuson	6	2-3	0	0	0-3	38
Baines	6	1-2	0	0	0-3	37
Strauss	4	0-0	0	1	0-0	26
O'Neill	0	17-19	0	0	1-1	20
Jones	3	0-0	0	0	0-0	18
Morgan	2	0-0	0	0	0-0	12
Steiner	2	0-0	0	0	0-0	12
Lung	1	0-0	0	0	0-0	6
Searles	1	0-0	0	0	0-0	6
Unruh	1	0-0	0	0	0-0	6

RUSHING	TC	YG	YL	Net	Avg.
Magnuson	154	827	9	818	5.3
Steiner	93	466	79	387	4.2
Morgan	68	310	18	292	4.3
Jones	80	259	19	240	3.0
Lung	39	193	4	189	4.8
Strauss	36	189	19	170	4.7
Robinson	27	171	19	152	5.6
Molloy	4	9	0	9	2.3
Baines	7	25	18	7	1.0
Allen	1	5	0	5	5.0
Mullins	2	4	1	3	1.5
Beers	1	1	0	1	1.0
Searles	12	16	15	1	0.1
Bain	1	0	0	0	0.0

PASSING	ATT	COM	Pct.	INT	Yds.	TD
Steiner	92	32	.348	9	488	8
Mullins	19	10	.526	2	133	0
Searles	15	5	.333	0	90	1
Baines	1	0	.000	0	0	0

TOTAL OFFENSE

	Plays	Yds. Rush	Yds. Pass	Total
Steiner	185	387	488	875
Magnuson	154	818		818
Morgan	68	292		292
Jones	80	240		240
Lung	39	189		189
Strauss	36	170		170
Robinson	27	152		152
Mullins	21	3	133	136
Searles	27	1	90	91
Molloy	4	9		9
Baines	8	7		7
Allen	1	5		5
Beers	1	1		1
Bain	1	0		0

RECEIVING	No.	Yds.	Avg.	TD
Baines	19	273	14.3	5
Strauss	10	241	24.1	3
Kelly	4	58	14.5	0
Robinson	3	42	14.0	0
Jones	3	21	7.0	1
Lung	2	20	10.0	0
Morgan	2	18	9.0	0
Searles	1	17	17.0	0
Brumback	1	8	8.0	0
Beers	1	5	5.0	0
Magnuson	1	4	4.0	0

KICKOFF RETURNS	No.	Yds.	Avg.
Jones	18	302	16.8
Robinson	2	37	18.5
Magnuson	1	16	16.0
Strauss	1	13	13.0
Gray	1	9	9.0

INTERCEPTIONS	No.	Yds.	Avg.
O'Neill	6	73	12.1
Nelson	4	32	8.0
Unruh	2	108	54.0
Smith	2	5	2.5
Beers	2	0	0.0
Stimac	1	10	10.0
Allen	1	0	0.0
Jernberg	1	0	0.0

PUNT RETURNS	No.	Yds.	Avg.	TD
Baines	26	318	12.2	1
Nelson	2	5	2.5	0

PUNTING	No.	Yds.	Avg.	Blkd.
Allen	59	2,375	40.2	0

Boldface denotes returning player

The All-Time Record

Year	Won	Lost	Tied	Pct.	Coach
1897	1	2	3	.166	Fred Smith
1898	3	2	0	.600	Sgt. B. Searight
1899	1	2	0	.333	Guy Cleveland
1900	0	1	0	.000	Frank Bean
1901	2	2	0	.500	Frank Bean
1902	0	2	0	.000	Dewett Peck
1903	2	5	0	.285	H. B. Conibear
1904	3	2	0	.600	H. B. Conibear
1905	2	3	0	.400	F. W. Schule
1906	2	4	0	.333	F. W. Schule
1907	4	1	1	.667	Albion Fildlay
1908	1	2	1	.250	Roy White
1909	6	0	1	.857	Roy White
1910	3	2	1	.500	Robert Cary
1911	2	1	0	.667	Robert Cary
1912	4	3	0	.571	Lt. W. Philhoon
1913	2	4	0	.333	A. G. Heilman
1914	6	0	1	.857	A. G. Heilman
1915	2	2	2	.333	Jerry Nissen
1916	4	1	1	.667	Jerry Nissen
1917	1	4	0	.200	Jerry Nissen
1919	2	3	2	.285	Bernie Bierman
1920	4	3	0	.571	Bernie Bierman
1921	3	3	1	.428	Bernie Bierman
1922	3	4	0	.428	J. W. Stewart
1923	4	4	0	.500	J. W. Stewart
1924	4	4	0	.500	Earl Clark
1925	3	4	1	.375	Earl Clark
1926	3	5	0	.375	Frank Milburn
1927	3	4	1	.375	Frank Milburn
1928	4	5	1	.400	Frank Milburn
1929	3	5	1	.333	Frank Milburn
1930	5	3	0	.625	Frank Milburn
1931	1	6	0	.166	Bernard Oakes
1932	2	7	0	.222	Bernard Oakes
1933	3	4	0	.428	Bernard Oakes
1934	2	5	1	.250	Bernard Oakes
1935	1	5	2	.125	Doug Fessenden
1936	6	3	0	.667	Doug Fessenden
1937	7	1	0	.875	Doug Fessenden
1938	5	3	1	.555	Doug Fessenden
1939	3	6	0	.333	Doug Fessenden
1940	4	4	1	.444	Doug Fessenden
1941	6	3	0	.667	Doug Fessenden
1942	0	8	0	.000	Clyde Carpenter
1945	1	4	0	.200	George Dahlberg
1946	4	4	0	.500	Doug Fessenden
1947	7	4	0	.636	Doug Fessenden
1948	3	7	0	.300	Doug Fessenden
1949	5	4	0	.556	Ted Shipkey
1950	5	5	0	.500	Ted Shipkey
1951	2	7	0	.222	Ted Shipkey
1952	2	7	1	.200	Ed Chinske
1953	3	5	0	.375	Ed Chinske
1954	3	6	0	.333	Ed Chinske
1955	3	7	0	.300	Jerry Williams
1956	1	9	0	.100	Jerry Williams
1957	2	7	0	.222	Jerry Williams
1958	0	10	0	.000	Ray Jenkins
1959	1	8	0	.111	Ray Jenkins
1960	5	5	0	.500	Ray Jenkins
1961	2	6	0	.250	Ray Jenkins
1962	5	5	0	.500	Ray Jenkins
1963	1	9	0	.100	Ray Jenkins
1964	3	6	0	.333	Hugh Davidson
1965	4	6	0	.400	Hugh Davidson
1966	1	8	0	.111	Hugh Davidson
1967	7	3	0	.700	Jack Swarhout

(Won 201; Lost 278; Tied 24; Pct. .400)

Bold face denotes best seasons

1968 Cross Country

With the school's first Big Sky Conference cross country championship behind it, the 1968 team at the University of Montana will face a rough chore trying to get a second straight title.

Coach Harley Lewis has six of seven 1967 team members back this fall, but two are doubtful because they will be concentrating on conditioning for the half-mile run in track for the spring of 1969.

Top returnee is sophomore Wade Jacobsen of Simms, who finished second in last year's meet in Missoula. Gone is conference title-winner Fred Friesz of Billings, University of Montana course record holder.

But Lewis doesn't think losing Friesz will be as damaging as many might think. "Wade beat Fred two or three times in dual meets last fall, and he has tremendous potential to improve in cross country during the next three seasons."

Also back are league fourth-place finisher Ray Velez, junior from San Bernadino, Calif.; 10th finisher Steve Linse, sophomore from Snohomish, Wash.; 12th finisher Ray Ballew, soph from Sunburst; 14th man Duane Spethman, junior from Boulder, and 16th finisher Mick Harrington, senior from Missoula. Spethman and Harrington are the two doubtful ones mentioned above.

New to the program as freshmen will be Anaconda's Steve Johnson, Class A cross country winner last fall with a conference record; Great Falls' Bob Conway, third in Class AA cross country last year; Billings West's Tim O'Hare, eighth Class AA finisher in 1967, and Grants Pass, Oregon's Pat Duncan, best cross country runner there last fall.

Lewis says that since six of seven from last year's team will be back, in addition to four outstanding high school runners, "it is entirely conceivable that we could repeat the title in 1968.

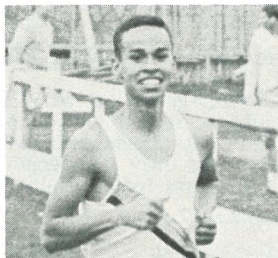
"However, we'll face one whale of a challenge from Idaho State, whose distance men certainly showed ours up at the Big Sky Track Meet in May."

THE SCHEDULE

Date	Opponent	Site
Sept. 28	Weber State College	Missoula
Oct. 5	Eastern Washington State	Tentative
Oct. 12	University of Idaho	Moscow
Oct. 19	Idaho State University	Pocatello
Oct. 26	Montana State University	Missoula
Nov. 2	AAU Meet (Tentative)	Spokane
Nov. 9	Big Sky Championships	Pocatello



JACOBSEN . . .
Top Returnee



VELEZ . . .
Could Push

The Press

MISSOULA OUTLETS

Don Zupan, Sports Editor, The Missoulian
Ray T. Rocene, Sports Columnist, The Missoulian
Chuck Johnson, The Kaimin, University of Montana
Milt Schwenk, Sports Director, KGVO Radio-TV
John Campbell, Sports Director, KYSS Radio
News Director, KGMV Radio
News Director, KYLT Radio
News Director, KUFM Radio, University of Montana

OTHER MONTANA OUTLETS

Norm Clarke, Sports, **Gazette**, Billings
Rolf Olson, Sports, **Chronicle**, Bozeman
Jack Keneally, Sports, **Standard**, Butte
Charles Stauffer, Editor, **Tribune-Examiner**, Dillon
Mayo Ashley, Sports, **Tribune**, Great Falls
Bob Gilluly, **Ravalli Republican**, Hamilton
Vern McIntyre, Sports, **News**, Havre
Les Rickey, Sports, **Independent-Record**, Helena
Bill Leininger, Sports, **Inter Lake**, Kalispell
Ken Alexander, Sports, **News**, Lewistown
Roy Anderson, Editor, **Enterprise**, Livingston
Gordie Spear, Sports, **Star**, Miles City

PRESS PASSES

Requests for press passes should be filed with the sports information director as soon as possible, because space will be limited this fall due to remodeling of the existing press facility, which will be moved to the new Dornblaser Stadium. Only those carrying a specially marked pass will be admitted to the press box, and for working purposes only.

BROADCASTING BOOTHS

There will be two radio booths available, with one reserved for that visiting station designated as the visiting team's official radio outlet.

SERVICES

Game statistics, complete with play-by-play, scoring and yardage reports, will be supplied at half time and at the game's end by the sports information director and his stats crew.

SIDELINE PASSES

Photographers who request sideline passes are subject to a deadline of one week prior to game time. Requests submitted after that time will be honored only in special cases by the judgement of the sports information director.

UNIFORMS

Montana will wear dark jerseys with white pants at home and all white uniforms on the road.

The 1968-69 Basketball Schedule

Date	Opponent	Site
Nov.		
30	Seattle Pacific University	Missoula
Dec.		
4	St. Cloud (Minn.) College	Missoula
7	Washington State University	Pullman
9	Northern Iowa University	Missoula
13	Washington State University	Missoula
14	Northern Michigan University	Missoula
27-28	Las Vegas Invitational (Southern Illinois, San Diego State, Nevada Southern, University of Montana)	Las Vegas
Jan.		
10-11	*University of Idaho	Missoula
13	*Gonzaga University	Missoula
17-18	*Idaho State University	Pocatello
20	*Weber State College	Ogden, Utah
24	*Montana State University	Butte
25	*Montana State University	Missoula
30	St. Francis College (Pa.)	Missoula
31	University of Washington	Seattle
Feb.		
8	*Montana State University	Bozeman
13	Portland State College	Portland
21-22	*Gonzaga University	Spokane
24	*University of Idaho	Moscow
28	*Weber State College	Missoula
March		
1	*Weber State College	Missoula
3	*Idaho State University Home 13; Away 13	Missoula
*Big Sky Conference Games		

