

*Official
Souvenir
Program*



54th
INTERSCHOLASTIC

Montana State University

Missoula

May 20-21, 1960

*"The Climax of the
High School Year"*

Price: 50 Cents

1960 Interscholastic Committee

CHARLES F. HERTLER, Chairman

F. Brown	Little Theatre
M. Chessin	Gatekeeper
Ed. Chinske	Manager of Athletics
Miss M. Clow	Entertainment of Women
Dean A. Cogswell	Entertainment of Men
V. Gilbert	Declamation
R. Diettert	Entry Blanks
E. B. Dugan	Editorial Association
J. Lester	Golf
E. Lory	Entry Blanks
R. McGinnis	Debate, Original Oratory & Extemporaneous Speaking
B. Gilluly	Publicity and Programs
Geo. Millis	Transportation
T. Ostrom	Head Scorer
E. Torgrimson	Physical Equipment
John Wailes	Gatekeeper
V. Wilson	Tennis

STUDENTS:

Bear Paws	Denis Adams, President
Spurs	Annette Smith, President
Traditions	Ron Simon, President
Campus Visitation	Delbert Ashmore



STATE OF MONTANA
OFFICE OF THE GOVERNOR
HELENA

Dear Interscholastic Fans:

Welcome to the climax of the high school year. This is the time each year when competitors from high schools throughout Montana gather on the campus of Montana State University to take part in track and field, golf, tennis, debate, extemporaneous speech, declamation, original oratory, drama and school publication competition.

All of us in Montana can be proud of this Interscholastic meet, which is more than just another athletic event. It has grown from 19 schools and 100 competitors in 1904 to an expected 1400 participants from 130 schools in Montana this year at the 54th Interscholastic.

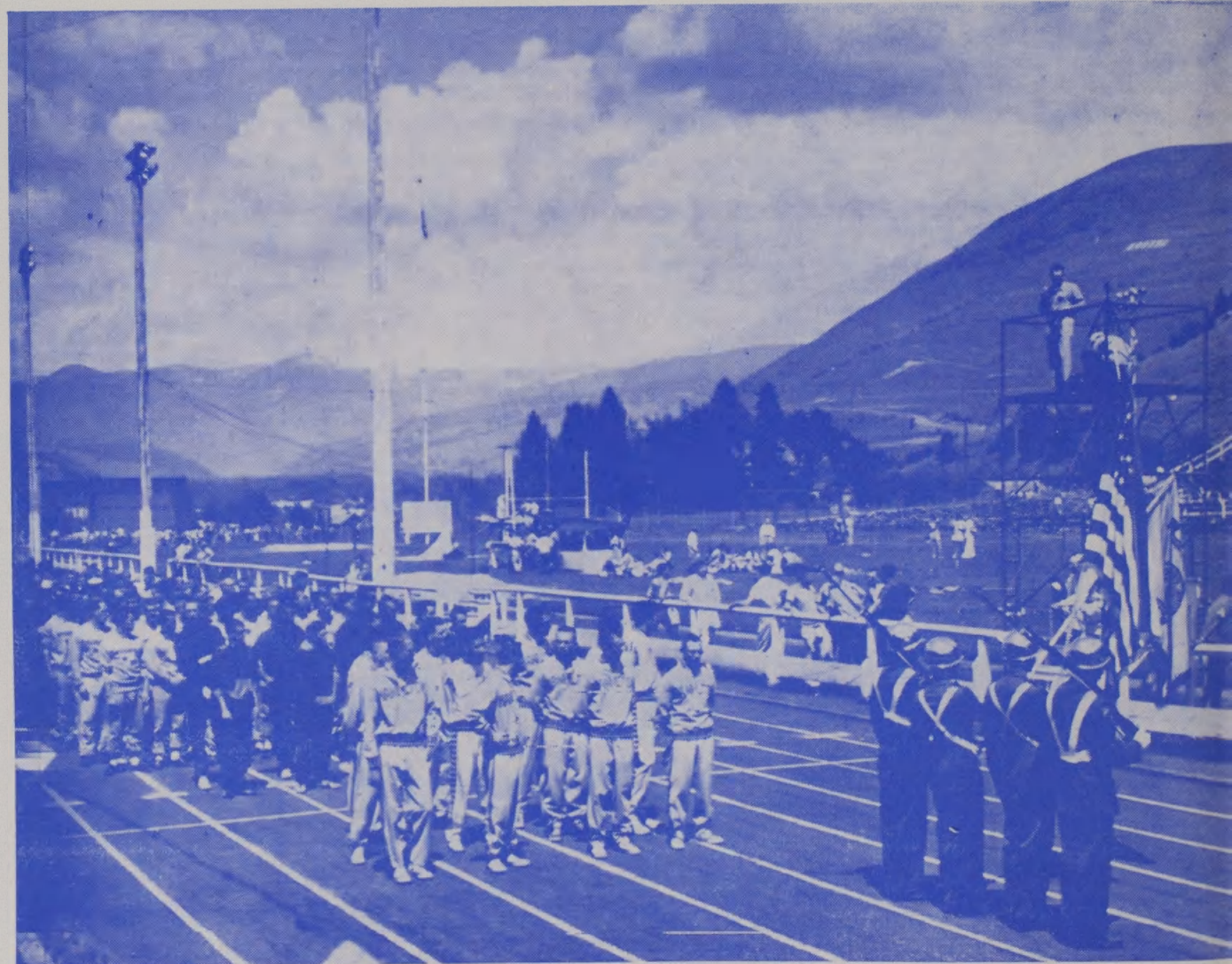
Such competition among our youth is part of our American way of life. I hope many Montanans will be at Dornblaser field and elsewhere on the MSU campus this weekend watching the events. I wish I could join you. However, I am proud and happy to be able to welcome you to this 54th annual Interscholastic.

Very truly yours,

J. Hugo Aronson

Governor

It Happened in 1959 . . .



THE PARADE OF ATHLETES—One of the most stirring features of any Interscholastic meet is the annual Parade of Athletes, which is held just prior to the opening race of the track meet. The ROTC Color Guard, followed by some 1000 athletes from 130 Montana high schools, waits expectantly for the MSU Band to strike up the National Anthem.



HOUSE DECORATIONS (Above)—MSU fraternities and sororities put on a unique show of their own during Interscholastic, erecting large displays urging Montana high school students to attend MSU.

MIEA GATHERING (Right)—Some 150 of Montana's finest high school journalists spend two busy days meeting during Interscholastic. High school newspapers are rated, the students hear professional speeches from prominent newspaper and radio personalities, and the students get a chance to tour the finest Journalism school in the Northwest.



GIRLS' GOLF (Left — Three high school girls among some 30 who compete in golf during the Interscholastic. The 1959 winner was Jane Farnum of Polson.



VIEW FROM MOUNT SENTINEL — The huge MSU track stadium, jammed with fans for the 1959 meet, strikes a unique pose as seen from the hillside of Mount Sentinel. Some 10,000 track fans jammed the stadium for the two-day track meet in 1959.



PUBLIC SPEAKING—A 1959 speech winner delivers his top oration during the prizes and awards ceremony at the conclusion of the Interscholastic meet. Some 150 speech candidates will compete this year in a number of different oratorical contests.



STREET DANCE—One of the most popular activities during Interscholastic is the annual street dance, held in front of the MSU Lodge. Another feature for 1960 Interscholastic participants will be a special showing of "Oklahoma" Friday night.



THE BIG FEED—Generous helpings of roast beef and all the trimmings are served up by MSU officials to the 1200 Interscholastic guests every year. This event, held as a picnic on the spacious University campus, is another "must" for all Interscholastic participants.

Program of the Meet

FRIDAY, MAY 20

- 6:30 a.m.—**Boys' Golf.** All contestants meet in front of the Lodge for transportation to Missoula Country Club course.
- 7:30 a.m.—**Girls' Golf.** All contestants meet in front of the Lodge for transportation to Missoula Country Club course.
- 8:00 a.m.—**Boys' Tennis.** All participants report to Men's Gymnasium.
- 8:00 a.m.—**Extemporaneous Speaking.** Drawings for topics in Liberal Arts Lounge.
- 8:00 a.m.—**Original Oratory.** Round I. Assignments in Liberal Arts Lounge.
- 8:00 a.m.—**Declamation.** Meeting of all contestants in Liberal Arts Room 104. Round I will follow meeting.
- 8:00 a.m.—**Little Theater Festival.** University Theater and Masquer Theater.
- 8:30 a.m.—**Boys' Tennis.** Singles and doubles. University Courts.
- 8:30 a.m.—**Girls' Tennis.** All contestants report to Women's Center.
- 9:00 a.m.—**Girls' Tennis.** Singles and doubles. University Courts.
- 9:00 a.m.—**Meeting of athletic representatives** of all schools at Men's Gym for distribution of contestant numbers.
- 9:00 a.m.—**Original Oratory.** Round II.
- 9:00 a.m.—**Extemporaneous Speaking.** Round I.
- 9:00 a.m.—**Interscholastic Editorial Association.** Journalism Building.
- 10:00 a.m.—**Debate.** Round I. Assignments in Liberal Arts Lounge.
- 10:00 a.m.—**Declamation.** Round II.
- 11:00 a.m.—**Original Oratory.** Round III (semi-finals).
- 1:00 p.m.—**Debate.** Round II.
- 1:00 p.m.—**ROTC Review.**
- 1:10 p.m.—**Track and Field Meet.** Parade of Athletes at Dornblaser Field.
- 1:30 p.m.—**Little Theater Festival.** University Theater and Masquer Theater.

- 2:00 p.m.—**Extemporaneous Speaking.** Drawing for topics in Liberal Arts Lounge.
- 2:00 p.m.—**Declamation.** Round III.
- 3:00 p.m.—**Extemporaneous Speaking.** Round II.
- 4:00 p.m.—**Debate.** Round III.
- 7:15 p.m.—**Singing on the Steps.** University Hall.
- 8:00 p.m.—**Declamation and Original Oratory.** Finals. University Theater.

SATURDAY, MAY 21

- 6:30 a.m.—**Boys' Golf.** All contestants meet in front of the Lodge for transportation to Missoula Country Club course.
- 7:30 a.m.—**Girls' Golf.** All contestants meet in front of the Lodge for transportation to Missoula Country Club course.
- 8:00 a.m.—**Boys' Tennis.** All participants report to Men's Gymnasium.
- 8:00 a.m.—**Girls' Tennis.** All participants report to Women's Center.
- 8:00 a.m.—**Debate.** Round IV.
- 8:00 a.m.—**Little Theater Festival.** University Theater and Masquer Theater.
- 8:30 a.m.—**Boys' Tennis.** Singles and doubles. University Courts.
- 9:00 a.m.—**Girls' Tennis.** Singles and doubles. University Courts.
- 9:00 a.m.—**Extemporaneous Speaking.** Drawing for topics in Liberal Arts Lounge.
- 10:00 a.m.—**Extemporaneous Speaking.** Round III.
- 10:30 a.m.—**Debate.** Round V (quarter-finals).
- 12:00 Noon—**Luncheon Meeting** of teachers of English, Drama and Speech.
- 1:15 p.m.—**Track and Field Meet.** Finals.
- 1:30 p.m.—**Little Theater Festival.** University Theater and Masquer Theater.
- 1:30 p.m.—**Debate.** Semi-finals.
- 2:00 p.m.—**Extemporaneous Speaking.** Drawing for topics in Liberal Arts Lounge.
- 3:00 p.m.—**Extemporaneous Speaking.** Finals.
- 4:30 p.m.—**Debate.** Finals.
- 8:00 p.m.—**Little Theater Festival.** University Theater.
- 8:00 p.m.—**Awarding of Prizes.** University Theater.

Interscholastic Editorial Association

ALL-STATE NEWSPAPER RATINGS, 1959

Iniwa, Great Falls High School
Signal Butte, Custer County High School,
Miles City
Nugget, Helena Senior High School
Copper Glow, Anaconda High School
Beaver, Beaverhead County High School,
Dillon
Laurel Leaves, Laurel High School
Cone-Let, Sacred Heart Academy, Missoula
Refiner, North Toole County High School,
Sunburst
Jolitana, Joliet High School
Evergreen, Lincoln County High School,
Eureka
Stirr-Up, Culbertson High School
Skyline, Charlo High School
Broadcaster, St. Ignatius High School
Scout, Bridger High School
Eagle News, Fairfield High School
Hi-Lite, Columbus High School
Bay Breeze, Bigfork High School
Sun River Valley Success, Simms High
School
Sandy Rouser, Big Sandy High School
Plainsman, Lustre Bible Academy
Bear Paw, Box Elder High School
Static, Ennis High School
Cougar, Custer High School
Shield, Wilsall High School
Prairie Dog Chatter, Winifred High School
Jocko, Arlee High School
Passamari, Sheridan High School
Talon, Fromberg High School
Mission Bells, Mission High School, Hays
News, East Junior High School, Great Falls
Western Star, West Junior High School, Great
Falls

Sigma Delta Chi, professional journalism fraternity, will award six trophies for writing in three divisions; news feature, editorial and sports. Individual trophies will be awarded to contestants placing first in each division, and larger traveling trophies will be awarded to the schools from which the winning writers are delegates. A school winning one of these trophies three times will gain permanent possession.

Theta Sigma Phi, professional journalism fraternity for women, will make two "outstanding journalist awards" to the girls selected for having shown most notable achievements in scholarship, journalism activities and other high school activities. Nominees will be selected by high school publication staffs and advisers.

The Montana Interscholastic Editorial Association will meet in the Journalism building at 9 a.m. Friday. Each member school is entitled to two voting delegates. Delegates must be listed on the school's entry blank (see page 4).

Annual newspaper ratings will be announced at the close of the Friday morning session. Awards in this contest will be made upon the basis of the following classifications:

Class A — Printed publications from schools with enrollments of 500 or more.

Class B — Printed publications from schools with enrollments between 250 and 500.

Class C — Printed publications from schools with enrollments between 100 and 250.

Class D — Printed publications from schools with enrollments less than 100.

Class E—Duplicated papers from schools with enrollments of 75 or more.

Class F—Duplicated papers from schools with enrollments of less than 75.

Class G—Papers published as inserts or departments in community newspapers.

Class H—Printed or duplicated publications from junior high schools.

Papers in each class will be rated All-State, Superior, Good, Fair or Poor.

For additional information, write to Prof. Edward B. Dugan, School of Journalism, Montana State University, Missoula, Montana.

Speech Events . . .

Sweepstakes Winner, 1959: Great Falls Central High School.

A trophy is awarded by the Montana High School Association to the school scoring the greatest number of points in all events.

Declamation

Finalists for 1959: Oratorical, 1st—Rozy Cochran, Billings Sr. H.S. 2nd—Kay Neff, Sacred Heart Academy, Missoula. 3rd—Jim Gedley, Billings Senior H.S.

Dramatic, 1st—Corinne Yardley, Great Falls Central. 2nd—Judith Williams, Billings Senior H.S. 3rd—Colleen Flynn, Sacred Heart Academy, Missoula.

Humorous, 1st—Ed Gleason, Lima High School. 2nd—John Stafford, Great Falls Public H.S. 3rd—Roseann Sheridan, Billings Senior H.S.

Oratorical Declamation

Contestant	High School	Title
DISTRICT I		
Shirley Gress	Forsyth H. S.	Why?
Beverly Oswood	Glasgow H. S.	Forever Strangers
Dorothy Polley	Forsyth H. S.	The Big Parade
Patsy Harvey	Dawson Co. H. S.	I Am Glad I Am an American
Sherry Rakes	Dawson Co. H. S.	The American Way of Life
DISTRICT II		
Sydney Zeiler	Hardin H. S.	The Bomb That Fell on America
Dick Denda	Billings Sr. H. S.	Why Are We Here?
Cathy Costello	Billings Central H. S.	I Speak for Democracy
Sherry Miller	Hardin H. S.	Without a Song
John Kelly	Red Lodge H. S.	I Speak for Democracy
DISTRICT III		
Dennis Rovero	Great Falls Public H. S.	Can Man Survive His Own Inventions
Quinton Seamons	Chinook H. S.	Present Day America

Stanlee Wardinsky	Great Falls Public H. S.	In Defense of Teenagers
Jim Vandeberg	Havre H. S.	Liberty or Death
Leonard London	Havre Central H. S.	Creed

DISTRICT IV

Bernadette Burke	Butte Girls' Central	The New South
Kathy Hiller	Rosary H. S.	They Stood Alone
Gail Schneider	Butte Girls' Central	New China
Carol Flanagan	Girls' Vocational H. S.	Impetuous Youth
Don Jacobs	Bozeman Sr. H. S.	Justice for Ireland

DISTRICT V

Barbara Johnstone	Missoula Co. H. S.	Lidice
Penny McGinnis	Missoula Co. H. S.	If Our Grandchildren Erect a Monument
Stacy Swor	Flathead Co. H. S.	Good Morning, America
Frank Schultz	Loyola H. S.	On the Waterfront
John Pauly	Loyola H. S.	Cross of Gold

DISTRICT SUP.

Bob Keene	Great Falls Central H. S.	Why?
Karen Schroer	Chester H. S.	Justice for the Negro
Carol Brain	Great Falls Central H. S.	(Education)

PALMER'S DRUG

"A Community Service"
Offers:

- ★ COMPLETE GIFT SELECTION
- ★ RUSSELL STOVER CANDIES
- ★ AMPLE PARKING

Across from Safeway, on Hi-way 93 South
Phone LI 9-4125

Dramatic Declamation

Name	High School	Title
DISTRICT I		
Rosemary Wright	Dawson Co. H. S.	Bobby Shafton
Judy Jo Ulmer	Custer Co. H. S.	The Madman
Sharon Zimmerman	Dawson Co. H. S.	White Lilacs
John Yollackson	Sidney H. S.	The Creation
Pat Lantis	Custer Co. H. S.	White Lilacs
DISTRICT II		
Emily Schladt	Billings Sr. H. S.	The Refugee Story
Ruth Ann Lundborg	Hardin H. S.	The Minuet
Judy Beaver	Hardin H. S.	Hagar
Wenda Wardell	Billings Sr. H. S.	Antigone
Gini Seitz	Billings Central H. S.	The Three Graduations
DISTRICT III		
Georgia Mack	Havre Central H. S.	Bill
Sally Blom	Havre Central H. S.	The Bad Seed
Naomi Fineman	Great Falls Public H. S.	Macbeth
Judy Davis	Chinook H. S.	John Brown's Body
Karen Kinkaid	Great Falls Public H. S.	The Snow Goose
DISTRICT IV		
Ruth Ann Willis	Girls' Vocational H. S.	Penny
Dick Manley	Butte Boys' Central H. S.	The Citizen's Appreciation
Janice Keough	St. Mary's H. S.	The Snow Goose
John Ritcher	Lima H. S.	A Robin's Breast Became Red
Sharon Fredrickson	Butte Public H. S.	Cutting from Job
DISTRICT V		
Steve Lemmer	Loyola H. S.	The Tragedy of Dr. Faustus
Pat Campbell	Loyola H. S.	Beyond the Last Mile
Eileen Corr	Sacred Heart	Anastasia
Jo Annette Wilson	Libby H. S.	The Wheels of Time
Jim Sayer	Flathead Co. H. S.	The Invisible Wound
DISTRICT SUP.		
Corrine Yardley	Great Falls Central	
Peggy McLean	Ft. Benton H. S.	Faded Roses
Bob Dewey	Great Falls Central	

Humorous Declamation

Name	High School	Title
DISTRICT I		
Kay Bowman	Custer Co. H. S.	Sixteen
Ed Harris	Forsyth H. S.	The Old Mother-Hubbard Sermon
Lois Strain	Dawson Co. H. S.	The Bear Story
Marlene Robinson	Dawson Co. H. S.	Betwixt and Between
Carol Seliski	Forsyth H. S.	At the Declamatory Contest
DISTRICT II		
Melinda Wilson	Billings Sr. H. S.	My Fair Lady
Jock Scowcroft	Billings Sr. H. S.	The Ramsbottoms
Linda Benzell	Hardin H. S.	Please Don't Eat the Daisies
Pam Waters	Absarokee H. S.	At the Lace Counter
Jane Beck	Big Timber H. S.	Exploit to Charles
DISTRICT III		
Alice Fussell	Havre H. S.	Go Josephine in Your Flying Machine
Linda Reese	Havre Central H. S.	My Sister Eileen
Teri Wieshaupt	Great Falls Public H. S.	Don Brown's Body
Rich Bollinger	Chinook H. S.	Ah Love! Ah Me!
Zola Lyon	Conrad H. S.	Poems and Bathtubs
DISTRICT IV		
Bill McLaughen	Butte Boys' Central	Old Yeller
Maret Finley	Helena H. S.	Teahouse of the August Moon
Tim Dudley	Bozeman Sr. H. S.	Ladies Wild
Bertha Schlegel	Girls' Vocational H. S.	Solid Gold Cadillac
Jadeen Flynn	Butte Girls' Central	Greener Grass
DISTRICT V		
Jane Nelson	Missoula Co. H. S.	Dental or Mental—I Say It's Spinach
Dorothy O'Connor	Sacred Heart	How to Get the Best of Your Children
Gail Jewell	Kalispell	The Cat Came Back
Mary Ann Pepe	Sacred Heart	Horton Hatching the Egg
Steve Williams	Loyola H. S.	A Modern Sermon
DISTRICT SUP.		
Sharon Jasmine	Great Falls Central H. S.	Please Don't Eat the Daisies
Connie Roediger	Shelby H. S.	Mr. Death and the Red-Headed Woman
Judy O'Brien	Great Falls Central H. S.	Go, Josephine, in Your Flying Machine

Debate

Winners for 1959: 1st—Jim Pierson, Jack Mudd, Great Falls Central H.S. 2nd—Elena Barnell, Charles Thurow, Anaconda High School. 3rd—(tie) Frank Gilfeather, Jim Bowers, Great Falls Public H.S.; Myron Hood, Charlene Holland, Helena H.S.

Question for 1960: "Resolved: That the Federal Government should substantially increase its regulation of labor unions."

CONTESTANTS ENTERED

Contestants	High School
DISTRICT I	
Phil Larson, Walter Dean	Forsyth H. S.
Carol Greenslit, Bill Krutzfeldt	Custer Co. H. S.
Jim Richard, Robert Hunton	Custer Co. H. S.
Darrel Knote, Gordon Jenson	Sidney H. S.
Gary Habedank, Gilbert Walker	Sidney H. S.

DISTRICT II	
Andrea Hagen, David Walker	Billings Sr. H. S.
Tom Barrow, Charles Brastrup	Billings Sr. H. S.
Dean Holmes, Ray Sorenson	Harlowton H. S.
Richard Crow, Alvin Yates	Red Lodge H. S.
Pat Cantrell, Pat Letcher	Billings Central H. S.
Jack Henderson, Nick Downen	Lewistown H. S.
Jane Early, Carole Savage	Lewistown H. S.

DISTRICT III	
Lauren McKensey, Bill Pope	Great Falls Pub. H. S.
Dan Johnson, John Kawerau	Havre H. S.
Dave McNicol, Glen Kilpatrick	Great Falls Public H. S.
Joe Almas, Bruce Brothers	Havre H. S.
Jim Seelinger, George Antunes	Havre Central H. S.
Eleanor Goligoski, Patty Hess	Havre Central H. S.
Janice Personen, Ray Jerguson	Chinook H. S.
Ted Matsuaka, Tom Burns	Chinook H. S.

DISTRICT IV	
Larry Eck, Robert Stitt	Bozeman Sr. H. S.
Paul Bramsman, Greg Burns	Dillon H. S.
Mary Kay Hardesty, Karen Kirwan	Rosary H. S.
George Temple, David Booth	Bozeman Sr. H. S.
Jerry Cooper, Pam Bompert	Helena H. S.
Diane Shiner, Michelle Boyle	Girls' Central H. S.
Colin Chriswell, Deon Bergeson	Dillon H. S.
Mike Healy, Joyce Bjorgum	Helena H. S.

DISTRICT V	
Jim Manyari, John Gordon	Flathead Co. H. S.
Karen Buescher, Diane Guelff	Sacred Heart
Susan Pennypacker, Mary Beck	Sacred Heart
Mike Dick, Don Hefferman	Loyola H. S.
Bob Nofsinger, Jerry Cunningham	Missoula Co. H. S.
Mike Green, Alden Wright	Missoula Co. H. S.
Dennis Hosteller, Beverly Starry	Libby H. S.
Irene Kujawa, Larry James	Libby H. S.

DISTRICT SUP.	
Jim Pierson, Jack Mudd	Great Falls Central H. S.
Larry Fosbender, Bob Brusekottter	Great Falls Central H. S.
Ronnie Randall, Gerald Underdahl	Shelby H. S.

Original Oratory

Winners for 1959: 1st—Linda Kammerzell, Chester H.S. 2nd—Patrick Campbell, Loyola High School, Missoula. 3rd—Corinne Yardley, Great Falls Central H.S.

CONTESTANTS ENTERED

Contestant	High School	Title
DISTRICT I		
Nola Beth Pust	Dawson Co. H. S.	Challenge to Democracy
Cheryl Ness	Dawson Co. H. S.	I Speak for Democracy
Bruce Marsh	Scobey H. S.	A Lump in the Throat
Greg Osborn	Sidney H. S.	The Invisible Rain
Donna Skerritt	Scobey H. S.	It's Up to Us

DISTRICT II		
Bettie Pallett	Billings Senior H. S.	Let My People Go!
Val Tollefson	Billings Senior H. S.	And I Wonder
Sherry Whipple	Absarokee H. S.	
Dean Sos	Billings Central H. S.	A Part Time Job Pays Off
Afton Miller	Absarokee H. S.	

DISTRICT III		
Jim Christianson	Havre H. S.	Love Versus Justice
John Stafford	Great Falls Public H. S.	For the Sake of Justice
Don Torgenrud	Great Falls Public H. S.	The American Labor Paradox
Jeanette Seamons	Chinook H. S.	The Road to Peace
Diane Maberry	Havre H. S.	The Great American Heritage

DISTRICT IV		
Tom Johnson	Bozeman Sr. H. S.	Our Time
Marilyn Ulrich	Holy Rosary	Can a Catholic Be Elected President?
Dick Ward	Holy Rosary	Powers of the States under the Constitution
Dave Swingle	Bozeman Sr. H. S.	Don't Be a Doom Predictor

DISTRICT V		
Pat Honeycutt	Missoula Co. H. S.	The Atomic Threat
Bob Casne	Flathead Co. H. S.	The Farm Problem
Bob Scott	Hamilton H. S.	Powers of the States
Dennis Nelson	Loyola H. S.	Materialisms in Battle
Denne Searles	Missoula Co. H. S.	Educating for Democracy

DISTRICT SUP.		
Leroy Julian	Great Falls Central	Reflection of God

Extemporaneous Speaking

Winners for 1959: 1st—Lynne Jacques, Great Falls Central. 2nd—Sharon Smith, Butte Girls Central. 3rd—Lovel Sjoblom, Butte Girls Central.

CONTESTANTS ENTERED

Contestant	High School
------------	-------------

DISTRICT I

Jim Olson	Forsyth H. S.
Vaughn Bush	Scobey H. S.
Jim Nile	Forsyth H. S.
Howard Robinson	Scobey H. S.
Mark Jacobson	Custer Co. H. S.

DISTRICT II

Mona Lissa	Billings Sr. H. S.
Mark Hungerford	Billings Sr. H. S.
Linda Downs	Billings Central H. S.
Pat Sullivan	Billings Central H. S.
Andrea Rostad	Big Timber H. S.

DISTRICT III

Jim Finch	Havre Central H. S.
Ben Kerkvliet	Great Falls Public H. S.
George Sendon	Great Falls Public H. S.
Lee McCartney	Chinook H. S.
Jim Ophus	Havre H. S.

DISTRICT IV

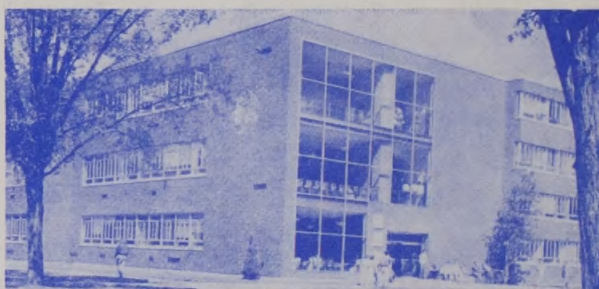
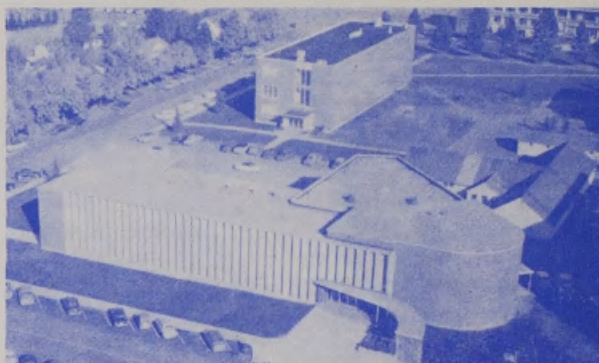
Mike Nash	Holy Rosary
Tom Lehrkind	Bozeman Sr. H. S.
Clark Glymore	Butte Public H. S.
Lorel Sjoblom	Butte Girls Central H. S.
Frank Seitz	Holy Rosary

DISTRICT V

Jay Longpre	Loyola H. S.
Howard Sorros	Missoula Co. H. S.
Gary Peterson	Missoula Co. H. S.
Arlene Orr	Libby H. S.
Larry Daly	Loyola H. S.

DISTRICT SUP.

Harry Power	Great Falls Central H. S.
-------------------	---------------------------



Fast As Lightning!

Good, dependable electricity furnished by The Montana Power Company speeds 186,000 miles a second to do your bidding . . . at the flip of a switch.

THE MONTANA POWER COMPANY



Familiar Landmarks on Campus . . .

(Left)

One of the most unique buildings on campus is the Music School building, constructed in the shape of a baby grand piano.

(Left)

Probably the busiest building at the University is Liberal Arts, where daily classes in English, History, Psychology, Sociology, Political Science, Speech and Drama are held.

(Left)

MSU's new nine-hole golf course, completed last summer, is another answer to the recreational needs of University students and townspeople.



Easily the outstanding symbol of Montana State University is Main Hall, the first building constructed on campus (in 1897) and has since been a well-known landmark to nearly 25,000 MSU students.

*We hope you will enjoy your
stay at the Palace Hotel*

Little Theatre Festival

WINNERS IN 1959

WINNING PLAYS:

"Cracked Ice" by Guernsey Le Pelley; Mr. Frederick K. Miller, Director; Billings Senior High School.

"Imaginary Invalid" by Moliere; Betty R. Browne, Director; Havre High School.

PLAYS IN UNIVERSITY THEATER

Best Actor—

Jim Hopkins as Witchboy—John in "Dark of the Moon," Helena Senior High School.

Best Actress—

Jana Jo Staton as Columbine in "Aria de Capo," Hamilton High School.

Best Character Actor—

Bill Emrick as The Clerk in "The Apollo of Bellac," Conrad High School.

Best Character Actress—

Joan Hakes as The Dark Witch in "Dark of the Moon," Helena Senior High School.

Best Supporting Actor—

Jerry Hopkins as the Conjur Man in "Dark of the Moon," Helena Senior High School.

Best Supporting Actress—

Janet Trask as Beautiful in "Cracked Ice," Billings Senior High School.

PLAYS IN MASQUER THEATER

Best Actor—

Warren Gaston as Caius Cassius in "Julius Caesar," Columbia Falls High School.

Best Actress—

Colleen Flynn as the Dowager Empress in "Anastasia," Sacred Heart Academy, Missoula.

Best Character Actor—

Charles Nottingham as Mr. Escalante in "When the Fire Dies," Sweet Grass County High School, Big Timber.

Best Character Actress—

Lorel Sjoblom as Goods in "Everyman," Girls' Central High School, Butte.

Best Supporting Actor—

Dick Stephenson as Mr. Ingoldsby in "The Trysting Place," Custer County High School, Miles City.

Best Supporting Actress—

Margaret Friedl as Leah in "Jane Eyre," Glasgow High School.

The Little Theater Festival is scheduled for two days this year: Friday, May 20, and Saturday, May 21. Two theaters, both on campus — the University Theater and the Masquer Theater — will be used to accommodate the productions. Plays will run concurrently in both theaters beginning at 8 a.m., Friday, May 20.

One-act plays or cuttings from longer plays, neither exceeding 35 minutes in playing time nor being less than 20 minutes and involving not more than one set of scenery, may be entered. Adjudicators will comment on all Festival entrants. One play from each theater will be selected for presentation at the evening Little Theater Festival program on Saturday, May 21, at 8 p.m. in the University Theater. Plays will be selected by the adjudicators on the basis of imagination, excellence of acting and general quality of production. Identical medals will be awarded in each theater for best actor, best actress, best supporting actor, best supporting actress, best bit actor and best bit actress.

1960 Little Theater Festival ...

Schedule of Performances

Friday and Saturday, May 20 and 21, 1960

MASQUER THEATER

Prof. Douglas H. Bankson,
Department of Drama, Montana State University,
adjudicator

FRIDAY

- 8:00 a.m.—Sacred Heart, "The Chimney Corner,"
Sister Mary Joanna, director.
- 9:00 a.m.—Shelby, "Three on a Bench," John
Snyder, director.
- 10:00 a.m.—Rygate, "Infanta," Mrs. Larry Ryan,
director.
- 11:00 a.m.—Park County, Livingston, "The Boor,"
Donald K. Kyle, director.
- 2:00 p.m.—Conrad, "The Twelve Pound Look,"
Bruce Cusker, director.
- 3:00 p.m.—Stanford, "Early Frost," Mrs. Loretta
Hammer, director.
- 4:00 p.m.—Fergus County, Lewistown, "Man in
the Bowler Hat," Marguerite Simmons,
director.

SATURDAY

- 8:00 a.m.—Hamilton, "When Shakespeare's
Ladies Meet," Sally Bohac, director.
- 9:00 a.m.—Red Lodge, "The Storm," Fred R.
Woepfel, director.
- 10:00 p.m.—**ORGANIZATIONAL MEETING OF
MONTANA HIGH SCHOOL THE-
ATER ASSOCIATION**
- 2:00 p.m.—Browning, "When the Fire Dies,"
Georges LeRoux, director.
- 3:00 p.m.—Beaverhead County, Dillon, "A Cup
of Tea," J. B. Michalson, director.

UNIVERSITY THEATER

Prof. Frederick K. Miller,
Director of Theater, Eastern Montana College,
adjudicator

FRIDAY

- 8:30 a.m.—Girls' Central, Butte, "When Shake-
speare's Ladies Meet," Kay Huhtanen,
director.
- 9:30 a.m.—Columbia Falls, "Medea," Francis
Fitzpatrick, director.
- 10:30 a.m.—Anaconda Senior, "Three Against
Death," John R. Doohan, director.
- 11:30 a.m.—Havre, "The Matchmaker," Mrs.
Phyllis E. Quanbeck, director.
- 1:30 p.m.—Billings, "Antic Spring," Charlotte
Trott, director.
- 2:30 p.m.—Missoula County, "Shall We Join the
Ladies," Heather McLeod, director.
- 3:30 p.m.—Bozeman, "A Husband for Breakfast,"
Barbara Watts, director.

SATURDAY

- 8:30 a.m.—Noxon, "The Christmas Carol,"
George J. Cussen, director.
- 9:30 a.m.—Loyola, Missoula, "Oedipus the
King," Mr. Thomas Grief, S.J., direc-
tor.
- 10:00 a.m.—**ORGANIZATION MEETING OF
MONTANA HIGH SCHOOL THE-
ATER ASSOCIATION** (Masquer The-
ater)
- 1:30 p.m.—Havre Central, "I Remember Mama,"
Sister Teresina, director.
- 2:30 p.m.—Missoula County, "The Lottery,"
Heather McLeod, director.

WESTINGHOUSE

LAUNDROMAT

- Washes Cleaner
 - Rinses Better
 - Easier on all types of garments
- As low as \$199.95

DRYER

- Automatic Dry Dial
 - Dries Faster
 - Dries Safer
 - More Economical
- As low as \$149.95

CLAUSEN REFRIGERATION

432 N. Higgins

Dial LI 3-5141

Golf and Tennis Tournament . . .

1959 Girls' Interscholastic Golf Champion: Jane Farnum, Polson.

1959 Boys' Interscholastic Golf Champion: Jim Wallinder, Missoula.

1959 Boys' Interscholastic Golf Team Champion: Missoula County High School.

1959 Girls' Interscholastic Tennis Champion: Singles—Sandra Smith, Darby, first; Elaine Lousen, Butte, second. Doubles—Mary Lou Hartsell and Jackie Johnson, Missoula County, first; Elaine and Eileen Lousen, Butte Public, second.

1959 Boys' Interscholastic Tennis Champions: Singles—Pete Verduin, Billings, first; Richie Nordlund, Billings, second. Doubles—Don Hoffman and Randy Jacobs, Missoula County, first; Richie Nordlund and Chuck Boyd, Billings, second.

GIRLS' GOLF

ANACONDA

Thompson, P.
Williams, S.

BOZEMAN SENIOR

Beck, S.
Mougey, M.

BUTTE CENTRAL

Conroy, C.
Donich, D.
Huestis, M.
Kelley, C.
Martins, J.

BUTTE SENIOR

Johnson, C.
Mooney, S.

BUTTE GIRLS' CENTRAL

Mack, M.
Madden, M.
Madden, S.
McBride, H.
Pesanti, L.
Roberts, J.

FLATHEAD COUNTY

Denny, D.
Gilchrist, C.
Gillette, G.
Henrickson, K.
Rasmussen, M.
Schlecht, M.

GREAT FALLS

Asselstine, L.
Millione, D.
Wood, L.

HELENA SENIOR

Albright, C.
Anderson, A.
Bansch, K.
McEacheron, M.
Speer, S.

MISSOULA COUNTY

Dixon, J.
Searles, D.

BOYS' GOLF

ANACONDA

Blattner, B.
Brown, A.
Devich, Dick
Devich, Jim

ANACONDA CENTRAL

McCarron, R.
De Dyker, P.
De LaHunt, D.
Kosena, J.
Lemlin, B.

BILLINGS SENIOR H. S.

Jerhof, B.
Roberts, J.

BILLINGS CENTRAL

Hanson, B.
Ruegamer, B.

BOYS' CENTRAL, BUTTE

Armstrong, P.
Wilcox, B.
Penny, Palmer
Kopravica, G.

BOZEMAN SENIOR

Bodby, D.
Graf, G.
Kepyan, K.
Overturf, G.
Shanholtzer, J.

BUTTE SENIOR

Bennett, T.
Buckley, L.
Drovbay, G.
Dunford, G.
Edwards
Johnson
Kristovich, F.
LaBranche, G.
Olson, H.
Thompson, B.
Thompson, H.

CHINOOK

Leeds, B.
McCartney, L.

CUT BANK

Boyce, T.
Boyle, B.
Lahr, D.
Peterson, H.
Waller, D.
Wellister, K.

FLATHEAD COUNTY

Main, C.
Manion, T.
Marcure, J.

GREAT FALLS

Denton, H.
Hodges, T.
McIntyre, B.
Stevens, H.
Swanberg, C.
Wersman, J.

HAVRE CENTRAL

Kuka, M.
Leeds, P.
Seelinger, J.

HELENA SENIOR

Bentzen, P.
Conver, T.
Erickson, B.
Nelson, E.
Ranf, P.
Wilson, S.

MISSOULA COUNTY

Arehart, L.
Brown, R.
Chumrau, M.
Conant, J.
Cunningham, G.
Smith, R.
Thompson, T.
Valentine, S.

POLSON

Black, F.
Erkkila, J.
Fisher, J.
Johnson, D.
Williams, Ted
Williams, Terry

RED LODGE

Simmons, L.

SHELBY

Fischer, J.
Neidhardt, J.
Svennungsen, M.

WHITEFISH

Collins, J.
Evensen, K.
Freuen, M.
Freuen, P.
Geske, A.
Johnson, D.
Peschel, H.
Peterson, L.

BOYS' TENNIS—SINGLES

BILLINGS SENIOR

Anisgard, A.
Coxwell, J.
Verduin, P.

BILLINGS CENTRAL

Ellingsen, N.

BOZEMAN SENIOR

Franks, B.
Lehrkind, R.

BUTTE

Lienehann, P.
Lousen, B.

CORVALLIS

Handley, L.
Hopkins, M.
Hull, J.
Olsen, S.
State, L.

DARBY

Furniss, A.
Irwin, E.
Johnson, A.
Mohn, C.

FLATHEAD COUNTY

Henkinson, L.
Vidal, J.

GERALDINE

Fields, T.
Thomas, D.

GREAT FALLS

Asselstine, B.
Christensen, L.
Hughes, B.
Hurd, D.
Morris, P.

GREAT FALLS CENTRAL

Magee, B.
Moholt, T.

HELENA SENIOR

Daley, J.
Day, G.
Farmer, M.
Ferris, D.
Johnson, D.
Klieger, D.
Larock, L.
Strickland, B.

MISSOULA COUNTY

Beebe, R.
Fitzpatrick, T.
Hoffman, D.
Jacobs, R.
Olson, J.

STEVENSVILLE

Wilburn, D.
Wilcox, O.

HAMILTON

Champlin, M.
Rasmussen, T.
Rose, M.
Scott, B.

VICTOR

Garner, D.
Garnett, G.
Jaques, D.
Ankeny, M.
Morris, D.

BOYS' TENNIS—DOUBLES

BILLINGS SENIOR

Anisgard, A.
Verduin, P.

BOZEMAN SENIOR

Franks, B.
Lehrkind, R.

BUTTE

Lienemann, P.
Lousen, B.

CORVALLIS

Hopkins, M.
Hull, J.
Olsen, S.
State, L.

DARBY

Johnson, A.
Mohr, C.

FLATHEAD COUNTY

Bartsch, J.
Milaney, T.

GREAT FALLS

Asselstine, B.
Christenson, L.
Hughes, B.
Hurd, D.
Morris, P.

GREAT FALLS CENTRAL

Magee, B.
Moholt, T.

HELENA SENIOR

Daley, J.
Day, G.
Farmer, M.
Ferris, D.
Johnson, D.
Klieger, D.
LaRock, L.
Strickland, B.

MISSOULA COUNTY

Beebe, R.
Hoffman, D.
Fitzpatrick, T.
Jacobs, R.
Olson, J.

STEVENSVILLE

Wilcox, O.
Wilburn, D.

HAMILTON

Rasmussen, T.
Scott, B.
Blahnik, B.
Rose, M.
Champlin, M.

VICTOR

Garner, D.
Garnett, G.
Jaques, D.
Ankeny, M.
Morris, D.

GIRLS' TENNIS—DOUBLES

BILLINGS SENIOR

Clark, P.
McMillian, K.

BOZEMAN SENIOR

Dyke, J.
Green, P.

CORVALLIS

Bowden, D.
Lockwood, L.
Marsh, M.
Sager, D.

DARBY

Bringen, S.
Ralston, J.
Shook, G.
Skaw, R.

GREAT FALLS CENTRAL

Nardinger, S.
Schlimgen, J.

MISSOULA COUNTY

Anderson, R.
Brown, M.
Hartsell, M.
Jacobs, J.
Johnson, J.

VICTOR

Davenport, R.
Gilbert, L.
Hewitt, M.
Langton, L.

GIRLS' TENNIS—SINGLES

BILLINGS SENIOR

Dutcher, A.

BILLINGS CENTRAL

Hall, M.
Sasick, S.

BOZEMAN SENIOR

Dunlap, B.
Lubben, L.

BUTTE

Bacon, L.
Lousen, Eileen
Lousen, Elaine
Miller, B.
Peterson, L.
Scyphers, R.

CORVALLIS

Bowden, D.
Lockwood, L.
Marsh, M.
Sager, D.

DARBY

Bringen, C.
Bringen, S.
Ralston, J.
Shook, G.
Skaw, R.

FLATHEAD COUNTY

Ramsey, M.

GERALDINE

Little, A.
Meyer, H.
Miller, T.
Rudin, J.

GREAT FALLS

Hudak, C.
Langfeldt, D.
McIver, C.
Reid, J.

GREAT FALLS CENTRAL

Fashbender, P.

HELENA SENIOR

Spaulding, J.
Rudio, C.

MISSOULA COUNTY

Anderson, R.
Brown, M.
Hartsell, M.
Jacobs, J.
Johnson, J.

STEVENSVILLE

Lockridge, B.
Magini, K.

WHITEFISH

Arvidson, J.
Hamlin, M.
Schmechel, R.

HAMILTON

Duschene, C.
Rose, P.

VICTOR

Hinman, S.
Hewitt, D.

Program of Track and Field Events

Unless specifically indicated otherwise in the program, preliminary races shall be run in the following order: Class C, B, A and AA. Where no more than ten contestants from any class are entered in a running event, no trials or preliminary heats shall be run.

FRIDAY, MAY 20, 1:10 P.M.

Parade of Athletes

Trials, 100-yard dash—Classes B and C and C

Trials, 440-yard run—Classes B and C

Final, Mile Run—Classes B and C

Trials, 220-yard dash—Classes B and C

Final, 880-yard run—Classes AA and A

Trials, 180-yard low hurdles—Classes B and C

Trials, 880-yard relays—Classes B and C

Finals in the Class B and Class C pole vault and in the Class AAA and Class A high jump will be held concurrently with the running events.

Trials in the following field events will be held with participants competing in flights. Class B and Class C discus throw (on practice field north of Dornblaser Field). Class AA and Class A shotput, Class B and Class C javelin throw and Class AA and Class A broadjump (all on Dornblaser field), followed by Class B and Class C shotput, Class AA and Class A javelin throw, Class B and Class C broadjump (all on Dornblaser Field), and Class AA and Class A discus throw (on practice field north of Dornblaser field).

SATURDAY, MAY 21, 1:00 P.M.

Finals, 100-yard dash

Finals, 120-yard high hurdles

Finals, 440-yard run

Final, Mile run, Class AA

Final, Mile run, Class A

Final, 880-yard run, Class B

Final, 880-yard run, Class C

Finals, 220-yard dash

Finals, 180-yard low hurdles

Finals, 880-yard relays. (All relays will be run in lanes with staggered starts and on comparative time basis if there are more than five terms in any class).

Finals of the Class AA and Class A pole vault and Class B and Class C high jump will be held concurrently with the running events.

Finals of the weight throwing events and the broad-jump will be as follows: Class AA broad jump, Class A shot put, and Class B and Class C discus throw; followed by Class AA shot put, Class A discus throw, and Class B and Class C broad jump; followed by Class AA discus throw, Class A broad jump, and Class B and Class C shot put; followed in order by the Class B and Class C, Class A, and Class AA javelin throw.

The Committee reserves the right to qualify more contestants than the above calls for, and to eliminate any semi-final round to be unnecessary.

All 440, 880 and mile races will be started at the head of the straightaway (thus eliminating the first turn.)



Montana Track Champions
Drink

Community Creamery Milk

Points in Track and Field Meet, 1959

CLASS AA			Shelby	23	Corvallis	16
Park County	44		Conrad	20 3/7	Twin Bridges	14
Great Falls	32		Fairfield	18	Charlo	12
Helena	30		Libby	16 1/2	Dixon	11 1/2
Butte Public	28		Beaverhead	8 6/7	Boulder	10
Flathead	20		Powell County	8 3/7	St. Regis	9 1/2
Billings	20		Polson	8	Troy	9
Butte Central	18		Red Lodge	7	Power	8
Missoula	17		Anaconda Central	6	Victor	8
Bozeman	9		Browning	6	Whitehall	8
Anaconda	6		Harlowton	6	Superior	7 1/2
			Sunburst	6	Centerville	7
			Forsyth	5 13/14	Holy Rosary (Bozeman)	7
			Big Timber	5	Terry	6
			Choteau	4	Broadview	5
			Wolf Point	4	Drummond	4
			Fairview	3	Belt	4
			Malta	3	Stanford	4
			Columbia Falls	2	Darby	3 1/2
			Lodge Grass	2	Ennis	3
			Cut Bank	1 3/7	Plains	3
			Huntley Project	1 3/7	Sheridan	3
			CLASS C			
			Broadwater County	20	White Sulphur Springs	2
			Simms	18	Belgrade	1 1/2
			Augusta	16 1/2	Busby	1
					Culbertson	1
					Edgar	1

Best Individual Performers, 1959:

Class AA: Al Sarisky, Park County, 20 points
 Class A: Cliff Neighbors, Lewistown, 19 points
 Class B: Russ Johnston, Fairfield, 16 points
 Class C: Dick Artz, Augusta, 15 points

Montana Interscholastic Track and Field Records

Interscholastic meet records are the best marks established in any event in the meet regardless of whether established by Class AA, A, B, or C school contestants.

Event	Record	Holder
100-yard dash	9.8 sec.	R. O'Malley, Butte, 1933
220-yard dash	21.6 sec.	R. O'Malley, Butte, 1933
440-yard dash	49.9 sec.	F. Damaskos, Missoula, 1957
880-yard run	1:58.7	R. Merwin, Missoula, 1956
Mile run	4:27.6	J. Kittell, Missoula, 1945
High hurdles	14.8	Don McAuliffe, Butte, 1948
180-yard low hurdles	19.6 sec.	C. Orr, Missoula, 1953
Pole vault	12 ft. 10 in.	W. Custer, Missoula, 1930
Javelin throw	197 ft. 5 in.	R. Gustafson, Corvallis, 1938
Shot put	55 ft. 3/8 in.	R. Frisbee, Cut Bank, 1958
Discus throw	162 ft. 8 1/2 in.	J. Roban, Great Falls, 1953
High jump	6 ft. 6 in.	B. Hoppe, Broadwater Co., 1959
Broad jump	22 ft. 8 1/8 in.	K. Nelson, Missoula, 1955
Half Mile Relay	1 min. 31.1 sec.	(Boone, Lewis, Danielson, Drinville) Missoula, 1958

CLASS AA

ANACONDA

1. Cutler
2. Estes
3. Gates
4. Heaney
5. Herbolich
6. Lindstrom
7. Neilsen
8. Silizly
9. White
10. Wright

BILLINGS

11. Baum
12. Belue
13. Doan
14. Hill
15. Long
16. Loose
17. Nybo
18. Paterson
19. Powers
20. Scott
21. Shaver
22. Simon
23. Travis
24. Wegmet

BOZEMAN

25. Dodge
26. Erhardt

BUTTE CENTRAL

27. Garcia
28. McArthur
29. O'Leary
30. Roach
31. Shea

BUTTE PUBLIC

32. Edington
33. Fitzsimmons
34. Hauck
35. Laity
36. Riley
37. Robinson
38. Peterson
39. Sheron
40. Stadler

FLATHEAD

41. Bain
42. Christison
43. Himsl
44. Huggins

GREAT FALLS

45. Jackson
46. Krueger
47. Lund
48. McIntosh
49. Miller
50. Rowland
51. Schlenske
52. Talbot

HELENA

53. Baer
54. Greger
55. Hysell
56. Kenney
57. Larson
58. Melloy
59. Noland
60. Olson
61. Retz
62. Tobol
63. Nichwander
64. Wertz

MISSOULA

65. Allen
66. Aldrich

67. Benson
68. Croach
69. DuVall
70. Hess
71. Helwig
72. Jakub
73. Katsel
74. Marshall
75. McKinstry
76. Russell
77. Shrock
78. Seim
79. Smith
80. Sirokman
81. Steinberg
82. Townsend

PARK COUNTY

83. Downer
84. Lewis
85. O'Neil
86. Questad
87. Sarisky
88. Short
89. Spencer
90. Sumner

CLASS A

BILLINGS CENTRAL

91. Birrer
92. Boyle
93. Chesarek
94. Costello
95. Frigee
96. Garlock
97. Kolouster
98. Mathern
99. Sherman
100. Turcotte
101. Weber

CUSTER COUNTY

102. Carlson
103. Combs
104. Domaqala
105. Elliot
106. Gunther
107. Henderson
108. Hunton
109. James
110. Nolley
111. Oddy

112. South
122. Combs, B.

DAWSON COUNTY

113. Green
114. Opp
115. Palen
116. Squires
117. Sundling
118. Walker

FERGUS COUNTY

119. Brown

GLASGOW

120. Bjorklund
121. Crawley
122. Landes
123. Parke

GREAT FALLS CENTRAL

124. Berry
125. Bulger
126. Cannon

127. Diekens
128. Diekhans
129. Gilligan
130. McFadden
131. O'Hare
132. Schuall
133. Strizich
134. Weber

HARDIN

135. Hill
136. Marks
137. Moccasin
138. Plenty Hoops
139. Pretty Paint
140. Powers
141. Tate
142. Three Irons
143. Zeiler

LAUREL

144. Behn
145. Brown
146. Coulter

147. Crow
148. Diede
149. Foley
150. Frank
151. Fukado
152. Goldie
153. Harris
154. Heiser
155. Little
156. Moorman
157. Orr
158. Nottingham
159. Parker
160. Schmidt

SIDNEY

161. Fladmo
162. Jensen
163. Mann
164. McMorris
165. Peterson
166. Rozelle
167. St. Cyr
168. Williams

CLASS B

ABSAROOKEE

169. Abney
170. Bolin
171. Carter
172. Chambers
173. Cowee
174. Dinsdale
175. Lamoreaux
176. Pederson
177. Trees
178. Warner

ANACONDA CENTRAL

179. Emery
180. Keenan
181. Lowney

BAKER

182. Bruggman
183. Joyce
184. Price
185. Simmons
186. Wilder

BEAVERHEAD COUNTY

187. Denny
188. Ferris
189. Hilger
190. Martin
191. Mugaas
192. Selway
193. Schwartz

BIG TIMBER

194. Clark
195. Stevens

BROWNING

196. Brown
197. Ratler

CHINOOK

198. Bowen
199. Dickson
200. Kathman
201. Kimball
202. Tillemann
203. VandeVen

CHOTEAU

204. Asay
205. Carlson
206. Connole
207. Huffman
208. Jack
209. Jackson
210. Joramo
211. Kelly
212. Moore
213. Wedum
214. Wilson
215. Yeager, L.
216. Yeager, R.

CLASS B—(continued)

CIRCLE

- 217. Fritz
- 218. Moline
- 219. Pawlauski
- 220. Penn
- 221. Roseland
- 222. Spidel
- 223. Walton

COLUMBIA FALLS

- 224. Darling
- 225. Deflyer
- 226. McGill
- 227. Ravan
- 228. Vossburgh

COLUMBUS

- 623. Adams

CONRAD

- 229. Berg
- 230. Broesder
- 231. Corcoran
- 232. DeVries
- 233. Surdock
- 234. Gaskill
- 235. Johnson
- 237. Menli
- 238. Montoya
- 239. Robinson
- 240. Scott
- 241. Uelker

CUT BANK

- 242. Boyle
- 243. King
- 244. Ludke
- 245. Peterson
- 246. Seewald
- 247. Waggoner
- 248. Walker

EUREKA

- 249. West, A.
- 250. West, N.
- 251. Zimmerman

FAIRFIELD

- 252. Ballantyne
- 253. Bateman
- 254. Davis
- 255. Hartz
- 256. Jenkins
- 257. Ober
- 258. Olson
- 259. Phillips
- 260. Udin
- 261. Woodhouse
- 262. Young

FAIRVIEW

- 263. Bauman
- 264. Cayko
- 265. Harris
- 266. Roze
- 267. Reed
- 268. Vicks

FORSYTH

- 269. Flanagan
- 270. Friez
- 271. Gambill
- 272. Nile
- 273. Ostrum
- 274. Rolston
- 275. Schulenberg

FORT BENTON

- 276. Fry
- 277. Harmon
- 278. Jackson
- 279. Krause
- 280. Meeks
- 281. Nottingham
- 282. Rudin
- 283. Stevenson

HAMILTON

- 284. Gaasch
- 285. Grover
- 286. Heddich
- 287. Iten
- 288. Ray
- 289. Spannuth
- 290. Zoske

HARLEM

- 291. Cresswell
- 292. Pipe

HARLOWTON

- 293. Blaquiere
- 294. Neighbors

HELENA CATHEDRAL

- 295. Holmes, Jeff
- 296. Holmes, Jake
- 297. Morrow

HUNTLEY PROJECT

- 298. Dierenfield
- 299. Hoffman
- 300. Kraske

LIBBY

- 301. Burns
- 302. Collins
- 303. Moriceau
- 304. Murphy

- 305. Nelson
- 306. Peck
- 307. Schneider
- 308. Tushaus
- 309. Vaughan
- 310. Vinion

LODGE GRASS

- 311. Big Lake
- 312. Bomar
- 313. Caddel
- 314. Gordon
- 315. Pease
- 316. Schenderline

LOYOLA (MISSOULA)

- 317. Ballas
- 318. Brooke
- 319. Burns
- 320. Chinske
- 321. Dosch
- 322. Jobe
- 323. Matt
- 324. Morse
- 325. Meyers
- 326. Plummer
- 327. Wherley

MALTA

- 328. Anderson
- 329. Compton
- 330. Husby
- 331. Kron
- 332. LaFond
- 333. Loucks
- 334. Lumsden
- 335. Nicholson
- 336. Sawyer
- 337. Spencer
- 338. Terwilliger
- 339. Watson
- 340. Weiderich

MISSION

- 341. Blackman
- 342. Brown
- 343. Parnell
- 344. Phillips
- 345. Sorrell

NASHUA

- 346. Bondy
- 621. Burns
- 347. Lauchner
- 348. Turner
- 349. Vanderhoff

PLENTYWOOD

- 350. Corner

- 351. Kaip
- 352. Larson
- 353. Overby
- 354. Wilson

POLSON

- 355. Anderson
- 356. Dwelle
- 357. Patterson
- 358. Thompson, C.
- 359. Thompson, O.
- 360. Thompson, S.
- 361. Sherick
- 362. Soucie
- 363. Stark
- 364. Sturm
- 365. Williams

POPLAR

- 366. Field
- 367. Moran
- 368. Paulsen

POWELL COUNTY

- 369. Burke
- 370. Koffler
- 371. McClure

RED LODGE

- 372. Barretta
- 373. Brown
- 374. Cline
- 375. Godina
- 376. Hinze
- 377. Kansala
- 378. Mann

RONAN

- 379. Cheff
- 380. Fullerton
- 381. Hurt
- 382. White

SCOBAY

- 383. Gilbert
- 384. Robinson
- 385. Veis

SHELBY

- 386. Aubrey
- 387. Barger
- 388. Brady
- 389. Bussell
- 390. Davison
- 391. Neidhardt
- 392. Neilson
- 393. Sanders
- 394. Seeley
- 395. Underdal
- 396. Wilson

"Welcome Trackmeet Visitors"

**When Money Matters
It Pays to Think . . .**

FIRST NATIONAL BANK



**Home Folks
Since 1873**

**Member Federal
Deposit Insurance
Corporation**

CLASS B—(continued)

STEVENSVILLE

397. Emery
SUNBURST
 398. Moss
 399. Stene

THOMPSON FALLS

400. Denison

401. Page
 402. Schmoyer

WHITEFISH

403. Barranger
 404. Groshong
 405. Osborne
 406. Stolte

407. Swanson
 408. Vance

WOLF POINT

409. Colgan
 410. Daris
 411. Ferdina
 412. Larson

413. Loendorf
 414. Nelson
 415. Schumway
 416. Schumaker
 417. Scott
 418. Thompson
 419. Wright
 625. Shumway R.

CLASS C

ARLEE

420. Huber
 421. Park

AUGUSTA

422. Artz
 423. Barrett
 424. Dreihosen
 425. Lucero
 426. Roos
 427. Witt

BELGRADE

428. Miller
 429. Moore
 430. Weagan

BELFRY

624. Lewis

BELT

431. Nebel

BIG SANDY

432. McNeil

BOULDER

433. Grasser
 434. Hamlin
 435. Timmer
 436. White

BRIDGER

437. Candlin
 438. Kapor

BROADVIEW

439. Badgett

BROCKTON

440. Brokaw

BUSBY

441. Knows His Gun
 442. LaRance

CASCADE

443. Baker
 444. Flechsenhar

445. Gollsher
 446. Abrecht
 447. Wareheim

CENTERVILLE

448. Erickson
 449. Guiski
 450. Pepos

CHARLO

451. Rogers

CHESTER

452. Berg
 453. Gillin
 454. Heikkila
 456. McDowell
 455. Lambott
 457. Nordstrom
 458. Ward

COLSTRIP

459. Harris

CORVALLIS

460. Bumgarner
 461. Engler
 462. Ensler
 463. Fitcher
 464. Flinders
 465. Hull
 466. Mickens
 467. Stephens
 468. Wirtz

CULBERTSON

469. Bagter
 470. Bjorge
 471. Jensen
 472. Moore
 473. Pennell
 474. Waller

CUSTER

475. Kempf
 476. Kuntz
 477. Roan

DARBY

478. O'Brien
 479. Savochka

DENTON

480. Sparks

DIXON

481. Clairmont
 482. Moss
 483. Schmaach

DUTTON

484. Becker
 485. Proff
 486. Thorne
 487. Trebesch

EDGAR

488. Gerber
 489. Gradwohl
 490. Krug, B.
 491. Krug, G.

EKALAKA

492. Anderson
 493. Burch
 494. Powell

ENNIS

495. Pasley

FLORENCE

496. Holmes
 497. Jordan
 498. Rogge

GILDFORD

499. Miller

HOLY ROSARY (BOZEMAN)

500. Binet
 501. Cahill
 502. Murphy
 503. Ward

HOT SPRINGS

504. Blackburn
 505. Franklin
 506. Halverson

HYSHAM

507. Miller
 508. Mysse

INVERNESS

509. May

JOLIET

510. Jarussi

JOPLIN

511. Cady
 512. Heyden

JORDAN

513. Highland

LAVINA

514. Nelson
 515. Thompson

MANHATTAN

516. Butkay
 517. Hughes
 518. Jensen
 519. Kennedy
 520. Lindgren

MEDICINE LAKE

521. Eamon
 522. Haas
 523. Henke, J.
 524. Henke, R.
 525. Madsen
 526. Thuesen
 527. Torgrimson

MOORE

528. Reimer

NOXON

529. Ulrich

The Fastest Runner of Them All . . .

Flowers Wired Anywhere —

Rely On Us for Speedy Delivery!

GARDEN CITY FLORAL

Hotel Florence Building



CLASS C—(continued)

OILMONT

530. Boutin

OPHEIM

531. Putnam

OUTLOOK

532. Cox

PLAINS

533. French
534. Grazier
535. Inmann
536. Ragland
537. Shields

POWER

538. Anderson
539. Johnson
540. Keel
541. Moran
542. Olson
543. Readicker
544. Toeschies
545. Williams

RAPALJE

546. Dilworth

RICHEY

547. Miller
548. Nelson
549. Saft

ROSEBUD

550. Deitchler
551. Lopez
552. Polich

ROY

553. Harrell

SACRED HEART (MILES CITY)

554. Murray
555. Schaefer

SAVAGE

556. Hagler

SHERIDAN

557. Bock
558. Pack
559. Sagunsky

SIMMS

560. Johnson
561. Kuebler
562. Loomis
563. Miller
564. Nash

STANFORD

565. Dubois
566. Haker

STATE SCHOOL

567. Chamberlain
568. Dahl
569. Dyer
570. LaMere
571. Ray
572. Trotchee
573. Ventling
574. Wilkins

SUMATRA

575. Hecker

SUPERIOR

576. Walle
577. Wickstrom
578. Wilkinson
579. Zimmerman

ST. LEO'S (LEWISTOWN)

580. Jimmerson
581. McConnell

ST. REGIS

582. Bennett

TERRY

583. Buckingham
584. Ensign
585. Irion
586. Rittal
587. Schwartz
588. Strobel
589. Tibbetts, S.
590. Tibbetts, U.
591. Wahl

THREE FORKS

592. Lane
594. Polston
595. Townsend

TOWNSEND

596. Bruce
597. Iverson
598. Miller
599. Plummer
600. Schweisow

TROY

601. Banning
602. Cripes
603. Fisher
604. Hewett
605. Johnson
606. Larson

TWIN BRIDGES

607. Cote
608. Wheatley

VICTOR

609. Maier
610. Wofford
611. Simonsen

WHITEHALL

612. Baker
613. Foutz

WHITE SULPHUR SPRINGS

614. Finn
615. Johnson
616. Musgrove

WILLSALL

617. Fastje
618. Hebnes
619. Wilson

WINIFRED

620. Udelhoven



TOWN HOUSE RESTAURANT

114 W. Main St.

Missoula, Montana

... HOUSE OF FINE FOODS

... Welcomes you to dine in MISSOULA'S NEWEST and
MOST MODERN RESTAURANT

FEATURING

★ LUNCHEON

★ DINNERS

★ BREAKFAST

★ Steaks cooked to your liking on our "Char Glo Broiler"

★ U. S. Choice Prime Rib of Beef, served daily

Open 7:00 A.M. to 9:00 P.M.

Closed Sundays and Holidays



TRACK AND FIELD EVENTS

100-YARD DASH

1959 Winners—School	Time
AA—Questad, Park City	10.1
A—Opp, Dawson County	10.1
B—Johnston, Fairfield	10.2
C—Artz, Augusta	10.4

Montana Record held by:
R. O'Malley, Butte, 1933,
Time: :09.8.

FINALS

Class AA—Time.....	Class A—Time.....	Class B—Time.....	Class C—Time.....
1.....	1.....	1.....	1.....
2.....	2.....	2.....	2.....
3.....	3.....	3.....	3.....
4.....	4.....	4.....	4.....
5.....	5.....	5.....	5.....

220-YARD DASH

1959 Winners—School	Time
AA—Questad, Park City	21.8
A—Price, Sidney	22.6
B—Johnston, Fairfield	22.3
C—Artz, Augusta	23.5

Montana Record held by:
R. O'Malley, Butte, 1933,
Time: :21.6.

FINALS

Class AA—Time.....	Class A—Time.....	Class B—Time.....	Class C—Time.....
1.....	1.....	1.....	1.....
2.....	2.....	2.....	2.....
3.....	3.....	3.....	3.....
4.....	4.....	4.....	4.....
5.....	5.....	5.....	5.....

440-YARD DASH

1959 Winners—School	Time
AA—Kenney, Helena	50.4
A—Miller, Custer County	51.9
B—Lowney, Anaconda Central	50.5
C—Grazier, Dixon	51.4

Record held by:
Damaskos, Missoula, 1957
Time: 49.9.

FINALS

Class AA—Time.....	Class A—Time.....	Class B—Time.....	Class C—Time.....
1.....	1.....	1.....	1.....
2.....	2.....	2.....	2.....
3.....	3.....	3.....	3.....
4.....	4.....	4.....	4.....
5.....	5.....	5.....	5.....

880-YARD RUN

1959 Winners—School

	Time
AA—Greger, Helena	2:03
A—Neighbors, Fergus County	2:05.4
B—Wherley, Loyola	2:01
C—Ward, Bozeman Holy Rosary	2:03.3

Record by:

**R. Merwin, Missoula, 1956,
Time: 1:58.7.**

FINALS

Class AA—Time.....	Class A—Time.....	Class B—Time.....	Class C—Time.....
1.....	1.....	1.....	1.....
2.....	2.....	2.....	2.....
3.....	3.....	3.....	3.....
4.....	4.....	4.....	4.....
5.....	5.....	5.....	5.....

ONE-MILE RUN

1959 Winners—School

	Time
AA—Jakub, Missoula County	4:37
A—Swan, Fergus County	4:43.3
B—DeVries, Conrad	4:32.4
C—Strobel, Terry	4:47.8

Record by:

**J. Kittell, Missoula, 1945,
Time: 4:27.6.**

FINALS

Class AA—Time.....	Class A—Time.....	Class B—Time.....	Class C—Time.....
1.....	1.....	1.....	1.....
2.....	2.....	2.....	2.....
3.....	3.....	3.....	3.....
4.....	4.....	4.....	4.....
5.....	5.....	5.....	5.....

120-YARD HIGH HURDLES

1959 Winners—School

	Time
AA—Sarisky, Park County	15.5
A—Neighbors, Fergus County	15.9
B—Jones, Beaverhead County	15.6
C—Fuhrmann, Charlo	15.5

Record by:

**D. McAuliffe, Butte Public,
1948 and 1949.
Time: :14.8.**

FINALS

Class AA—Time.....	Class A—Time.....	Class B—Time.....	Class C—Time.....
1.....	1.....	1.....	1.....
2.....	2.....	2.....	2.....
3.....	3.....	3.....	3.....
4.....	4.....	4.....	4.....
5.....	5.....	5.....	5.....

180-YARD LOW HURDLES

1959 Winners—School

	Time
AA—Sarisky, Park County	20.7
A—Price, Sidney	20.7
B—Pagenkopf, Hamilton	20.5
C—Fuhrmann, Charlo	20.7

Record by:

C. Orr, Missoula, 1953,
Time: :19.6.

FINALS

Class AA—Time.....	Class A—Time.....	Class B—Time.....	Class C—Time.....
1.....	1.....	1.....	1.....
2.....	2.....	2.....	2.....
3.....	3.....	3.....	3.....
4.....	4.....	4.....	4.....
5.....	5.....	5.....	5.....

SHOT PUT

1959 Winners—School

	Distance
AA—Lewis, Butte Public	54-9¾
A—Carlson, Custer County	48-9¼
B—Underwood, Conrad	49-5
C—Wirtz, Corvallis	50-2

Record held by: B. Frisbee,
Cut Bank, 1958.
Distance: 55' ¾"

FINALS

Class AA—Distance.....	Class A—Distance.....	Class B—Distance.....	Class C—Distance.....
1.....	1.....	1.....	1.....
2.....	2.....	2.....	2.....
3.....	3.....	3.....	3.....
4.....	4.....	4.....	4.....
5.....	5.....	5.....	5.....

JAVELIN THROW

1959 Winners—School

	Distance
AA—Christison, Flathead County	187-6¼
A—Hunton, Custer County	170-5½
B—Stene, Sunburst	173-1¾
C—Brundage, St. Regis	174-1

Record by:

R. Gustafson, Corvallis, 1938.
Distance: 197'5".

FINALS

Class AA—Distance.....	Class A—Distance.....	Class B—Distance.....	Class C—Distance.....
1.....	1.....	1.....	1.....
2.....	2.....	2.....	2.....
3.....	3.....	3.....	3.....
4.....	4.....	4.....	4.....
5.....	5.....	5.....	5.....

DISCUS THROW

1959 Winners—School	Distance
AA—Lots, Great Falls	155-1/2
A—Carlson, Custer County	149-0
B—Collins, Libby	149-3
C—Wucetich, Whitehall	137-9

Record by:
J. Roban, Great Falls, 1953,
Distance: 162'8 1/2".

FINALS

Class AA—Distance.....	Class A—Distance.....	Class B—Distance.....	Class C—Distance.....
1.....	1.....	1.....	1.....
2.....	2.....	2.....	2.....
3.....	3.....	3.....	3.....
4.....	4.....	4.....	4.....
5.....	5.....	5.....	5.....

HIGH JUMP

1959 Winners—School	Height
AA—Huggins, Flathead County	6-2 1/2
A—Neighbors, Fergus County	6-1
B—Glidden, Browning	6-1
C—Hoppe, Broadwater County	6-6 (new record)

Record by:
Bob Hoppe, Broadwater Co.
1959
Height: 6'6"

FINALS

Class AA—Height.....	Class A—Height.....	Class B—Height.....	Class C—Height.....
1.....	1.....	1.....	1.....
2.....	2.....	2.....	2.....
3.....	3.....	3.....	3.....
4.....	4.....	4.....	4.....
5.....	5.....	5.....	5.....

BROAD JUMP

1959 Winners—School	Distance
AA—Anderson, Great Falls	22-1
A—Lamb, Laurel	21-4 3/4
B—Bjork, Harlowton	22-3
C—Simpson, Superior	22-3

Record by:
K. Nelson, Missoula, 1955,
Distance: 22'8 1/8".

FINALS

Class AA—Distance.....	Class A—Distance.....	Class B—Distance.....	Class C—Distance.....
1.....	1.....	1.....	1.....
2.....	2.....	2.....	2.....
3.....	3.....	3.....	3.....
4.....	4.....	4.....	4.....
5.....	5.....	5.....	5.....

POLE VAULT

1959 Winners—School

	Height
AA—Mulcahy, Butte Central	12-2
A—Burns, Great Falls Central	10-6
B—Robbins, Hamilton	11-6
C—Buckles, Boulder	11-6

Record by:

W. Custer, Missoula, 1930,
Height: 12'10".
(Oldest Record on Books)

FINALS

Class AA—Height.....	Class A—Height.....	Class B—Height.....	Class C—Height.....
1.....	1.....	1.....	1.....
2.....	2.....	2.....	2.....
3.....	3.....	3.....	3.....
4.....	4.....	4.....	4.....
5.....	5.....	5.....	5.....

880-YARD RELAY RACE

1959 Winners—School

	Time
AA—Park County	1:32.5
A—Sidney	1:33.6
B—Hamilton	1:32.7
C—Broadwater County	1:35.8

Record by: Missoula (Boone,
Lewis, Danielson, Drinville),
1958. Time: 1:31.1.

FINALS

Class AA—Time.....	Class A—Time.....	Class B—Time.....	Class C—Time.....
1.....	1.....	1.....	1.....
2.....	2.....	2.....	2.....
3.....	3.....	3.....	3.....
4.....	4.....	4.....	4.....
5.....	5.....	5.....	5.....

TWO CHAMPIONS AT THE HOUSE OF HEINRICH

Fresh Flowers

Distinctive Jewelry

132 N. Higgins

SCORE CARD

NOTE—Score 6 points for first place, 4 for second place, 3 for third place, 2 for fourth place, 1 for fifth place, including relay.

	100-yard Dash	220-yard Dash	440-yard Dash	880-yard Run	One Mile Run	Discus Throw	Pole Vault	High Jump	Broad Jump	120-yard Hurdles	180-yard Hurdles	Shot Put	Javelin Throw	Relay Race	TOTAL
CLASS AA															
Anaconda															
Billings Senior															
Butte Central															
Butte Public															
Flathead County															
Gallatin County															
Great Falls Public															
Helena															
Missoula County															
Park County															
CLASS A															
Billings Central															
Custer County															
Dawson County															
Glasgow															
Great Falls Central															
Hardin															
Havre															
Laurel															
Fergus County															
Sidney															
CLASS B															
Absarokee															
Anaconda Central															
Baker															
Beaverhead County															
Big Timber															
Browning															
Chinook															
Choteau															
Circle															
Columbus															
Conrad															
Cut Bank															
Fairfield															
Fairview															
Forsyth															
Fort Benton															
Hamilton															
Harlem															
Harlowton															
Huntley Project															
Libby															
Lincoln County															
Lodge Grass															
Loyola, Missoula															
Malta															
Mission															
Nashua															
Plentywood															
Polson															
Poplar															
Powell County															
Red Lodge															
Scobey															
Shelby															
Stevensville															

SCORE CARD—(Continued)

NOTE—Score 6 points for first place, 4 for second place, 3 for third place, 2 for fourth place, 1 for fifth place, including relay.

[illegible]

The Record Holders . . .



440-YARD DASH

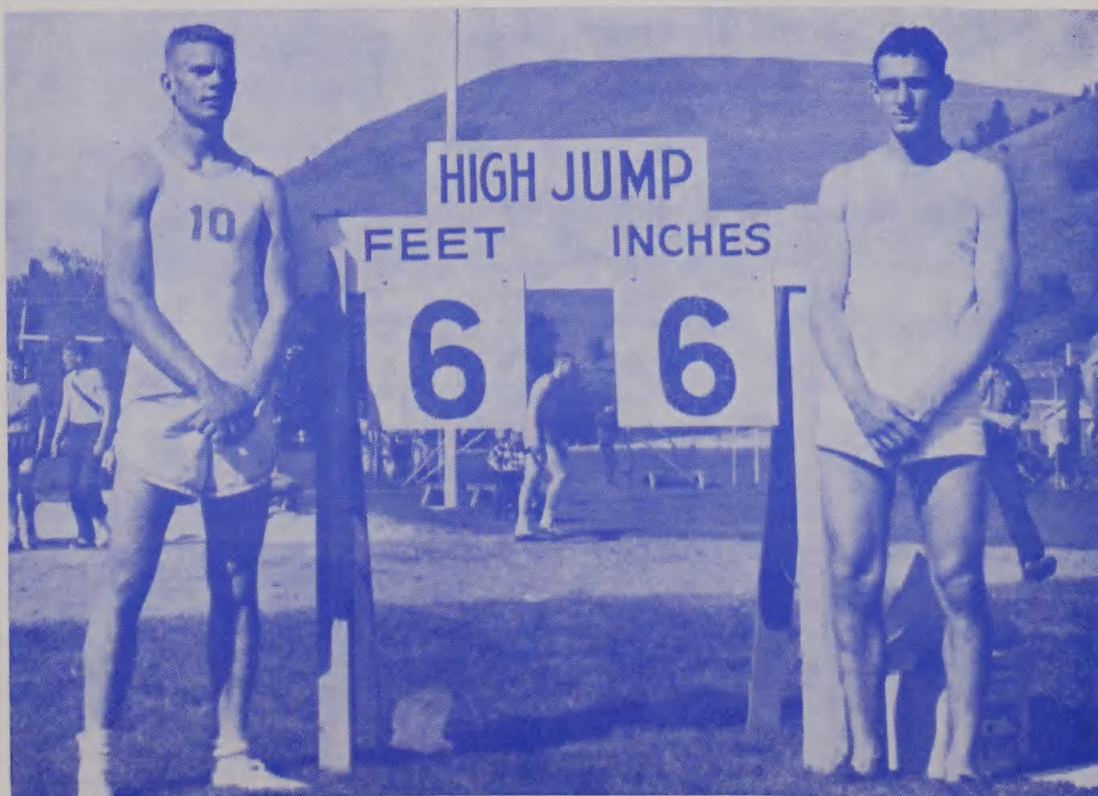
Frank Damaskos,
Missoula (1957)

Frank currently is attending Montana State University.

HIGH JUMP

Bob Hoppe (left)
Chuck Miller (right)

Latest record on the books is held by Bob Hoppe (left) of Broadwater County, who established the new mark of six feet six inches in the 1959 meet. Chuck Miller (right) of Twin Bridges, also broke the former record by going six feet five inches. Hoppe attended Montana State College this year, while Miller is a freshman at MSU.



The Record Holders . . .

100- AND 220-YARD DASHES

Bob O'Malley, Butte Public (1933)

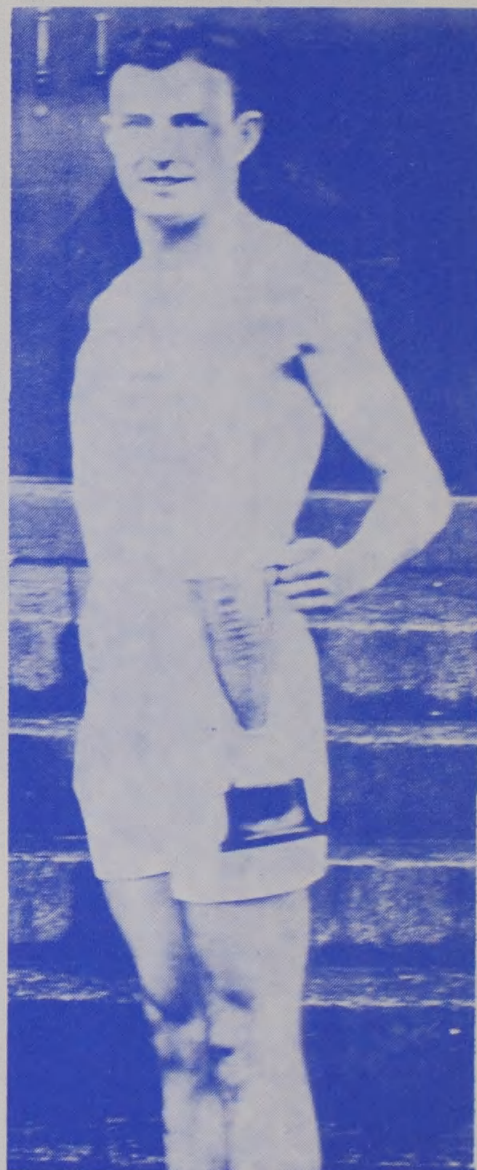
O'Malley at present is a safety inspector at Alameda Air Force Base in California. He lives in Oakland with his wife and son.



POLE VAULT

Walt (Bony) Custer, Missoula (1930)

Walt is currently a Missoula businessman.



HAUGEN-McKAY CO.

A Picture for Every Need!

120 N. Higgins

Phone LI 3-5197

The Record Holders . . .



LOW HURDLES

Conrad Orr, Missoula (1953)

Connie received a veterinary medicine degree last year from Washington State University, and he currently is a veterinarian at a Missoula clinic.



50-YARD DASH

Lloyd Denny, Flathead, 1908

Although the 50-yard dash was discontinued nearly 40 years ago, Lloyd Denny of Kalispell deserves a place in the record book. He set the mark in 1908 with a time of 5.2 seconds, and later tied the world's record in this event. Mr. Denny died a number of years ago, and no other information is available.

Welcome Visitors! We hope you enjoy the meet

**MOUNTAIN STATES TELEPHONE
AND TELEGRAPH CO.**

The Record Holders . . .



HALF MILE RELAY (Above)

Missoula (Tom) Boone, Bruce Danielson, Chuck Drinville, Larry Lewis), 1958.

Boone is a sophomore at Harvard University this year, Lewis is a freshman at MSU, and Danielson and Drinville are working in the Missoula area.



SHOT PUT

Bob Frisbee, Cut Bank (1958)

Bob is currently attending the University of Minnesota, where he is a member of the track team.



*See the World's Largest Fishing
Tackle Board!*

**Thousands of Items to Choose
from!**

BOB WARD & SONS

321 No. Higgins

The Record Holders . . .

MILE RUN

Jim Kittell, Missoula (1945)

Jim currently is a junior high school teacher and track coach in San Antonio, Texas. He graduated from Notre Dame University.



DISCUS THROW

Jim Roban, Great Falls Public (1953)

Jim presently is attending school at Montana State College, is a standout member of the MSC track team. He is married and has a three-year-old son.

THE FLORENCE . . . Missoula

America's Finest Motor Hotel

THE HOTEL WITH AN IDEAL

The Florence was conceived with the idea of providing Missoula and Western Montana with not just an ordinary hotel, but an outstanding one with high standards of operation. The recent fine addition—the New Motor Entrance and Pigeon Hole Garage—clearly indicate that the original concept is still the guiding influence. Seasoned travelers are amazed at the fine facilities—both guest room and dining that are available. Make use of them—you also can enjoy the luxury of an outstanding hotel.

The Record Holders . . .

BROAD JUMP

Ken Nelson, Missoula (1955)

Ken is currently a top-notch quartermiler on the MSU track team.



880-YARD RUN

Ray Merwin, Missoula (1956)

Ray, a former MSU student, is in the U. S. Army at the present time.

DELANEYS BUREAU OF PRINTING

- ★ Printing
- ★ Supplies
- ★ Furniture

Phone: LI 9-4113

Missoula

BON TON ENRICHED BREAD

Enriches Your Health

First in Quality

The Record Holders . . .

HIGH HURDLES

Don McAuliffe, Butte Public (1948)

McAuliffe currently is a chief metallurgical engineer with the Harvey Aluminum Company in Torrence, Calif. He lives in nearby Redondo Beach with his wife. He is a graduate of the University of Idaho Engineering School.



JAVELIN THROW

Roy Gustafson, Corvallis (1938)

Roy and his wife and two daughters are currently living in New Orleans, La., where he is a captain with Eastern Air Lines.

**Home of the Famous
WESTINGHOUSE DRYER**

THE ELECTRICAL SHOP

225 W. Broadway

Phone LI 3-5135

42 YEARS SERVING MONTANA

with

Champ Hats — Enro Shirts

Clothcraft Clothes — Freeman Oxfords

Dragstedt's

EVERYTHING MEN WEAR
ON CIRCLE SQUARE

The 1959 Winners . . .

HAMILTON "BRONCS" — 1959 STATE CLASS "B" CHAMPIONS



Front row, left to right: Gordon Pagenkopf, Gerald Robbins, Don Zyzniewski, David Hedditch, Mick Iten.

Second row, left to right: Coach Larry McLatchy, Jim Wheeler, Lee McLean, Gerald Bullock, Gary Spannuth, Bill Hettrick, Bob Cooper, Manager.

BROADWATER COUNTY "BULLDOGS" — 1959 STATE CLASS "C" CHAMPIONS

Front row, left to right: C. Miller, N. Bruce, P. Carson, D. Lavinder, R. Hoppe, D. Miller, G. Berberet, P. Delger, J. Vanmeter.

Second row, left to right: Manager J. Braley, R. Schwisow, P. Campeau, M. Cavey, A. Bruce, F. Grover, M. Iverson, L. Miller, T. Plummer.



Welcome

TO ALL INTERSCHOLASTIC VISITORS!

THE ANACONDA COMPANY

Lumber Department

The 1959 Winners . . .

PARK COUNTY "RANGERS" — 1959 CLASS "AA" STATE CHAMPIONS

Front row, left to right: Bernard Allen, Harry Bickle, Larry Downey, Duane Chapman, Bob Betley, Dick Gregory, Bill Bouchee.

Second row, left to right: Coach Lee Cork, Ray Kastelitz, Tom O'Neil, Larry Questad, Al Sarisky, Francis Ricci, Jim Sumner, Jack LeClaire, Ass't. Coach.

Not in picture: Jerry Short, Taylor Lewis.



SIDNEY "EAGLES" — 1959 CLASS "A" STATE CHAMPIONS



Front row, left to right: Philip Dynneson, Al Mann, Dennis Williams, Harold Sax, Jim Joslin, Ronnie Munoz, Craig Price.

Second row, left to right: Manager Lanny Vader, Coach Toby Kangas, Ernie Olness, Gary McMorris, Ray Hundtoft, Marvin Rozelle, Dick Rein, Ron Harper, Jerald Peterson, Ass't. Coaches Don Smading and John Grimstad.

Welcome!

To all contestants, coaches and visitors attending the Montana Interscholastic, we join the Garden City in a hearty welcome and extend an invitation to visit with us at Montana's Oldest and Largest department store!

Missoula
Mercantile
Co.

The Mercantile

95 Years
Established
1865

Top Performances by Divisions...

(Note: The following are top performances down through the years in each track division of the Interscholastic. State records are marked by astericks).

CLASS AA

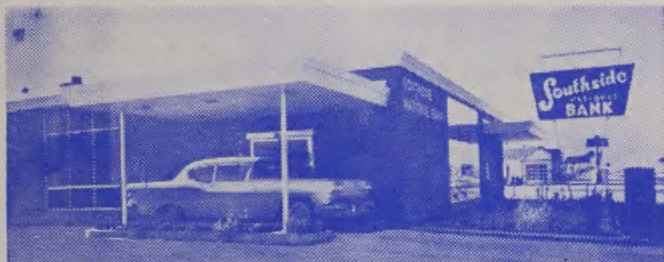
100 Yard dash	9.8 seconds	1933	R. O'Malley, Butte*
220 yard dash	21 seconds	1933	R. O'Malley, Butte*
440 yard dash	49.9 seconds	1957	F. Damaskos, Missoula*
880 yard run	1:58.7	1956	R. Merwin, Missoula*
Mile run	4:27.6	1945	J. Kittel, Missoula*
120 yard high hurdles	14.8 seconds	1948	D. McCauliffe, Butte*
180 yd. low hurdles	19.6 seconds	1953	C. Orr, Missoula*
Shot Put	54 ft. 9¾ inches	1959	H. Lewis, Butte
Pole vault	12 ft. 10 inches	1930	W. Custer, Missoula*
Javelin	191 ft. 5¾ inches		Cabbage, Flathead Co.
Discus	162 ft. 8½ inches	1953	J. Roban, Great Falls*
Broad jump	22 ft. 8½ inches	1955	K. Nelson, Missoula*
High jump	6 ft. 3¼ inches	1951	M. Grimes, Helena
880 relay	1 min. 31.2 seconds	1957	Missoula*

Robert M. Catlin

Professional Photography

Hammond Arcade

Missoula, Montana



Complete Banking Service
Ample FREE Parking

SOUTHSIDE NATIONAL BANK OF MISSOULA

South on Highway 93

"Conveniently Designed . . .
with YOU in mind"

CLASS A (Since 1954)

100 Yard dash	10.1 seconds	1959	R. Opp, Dawson Co.
		1955	C. Carlson, Custer Co.
220 yard dash	21.9 seconds	1955	C. Carlson, Custer Co.
440 yard dash	50.5 seconds	1958	D. Dotson, Sidney
880 yard run	2:02.0	1957	Micheals, Laurel
Mile run	4:43.3	1959	Swan, Fergus Co.
120 yard high hurdles	15.7 seconds	1958	J. Long, Dawson Co.
		1954	F. Connor, Custer Co.
180 yard low hurdles	20.5 seconds	1958	J. Long, Dawson Co.
High jump	6 ft. 2 inches	1956	Wylie, Havre
Broad jump	21 ft. 4¾ inches	1959	Lamb, Laurel
Pole vault	11 ft.	1956	Battrick, Butte
Shot Put	47 ft. 3¾ inches	1957	Schlauch, Dawson Co.
Discus	140 ft. 1¾ inches	1954	T. Carter, Park Co.
Javelin	190 ft. 3 inches	1958	Clark, Custer Co.
880 relay	1 min. 33.5 seconds	1958	Sidney

"The Store for Men and Women Who Buy for Men"

Yandt's
MEN'S WEAR

**Kuppenheimer Clothes Dobbs Hats
Florsheim Shoes**

403 N. Higgins

Phone LI 3-7711

The Best Sports Page
in Town . . .

THE TIMES

Missoula

"ANCHOR"

Your future with a savings account and
add to it regularly at

THE WESTERN MONTANA BUILDING & LOAN

Savings Center

Missoula

100 E. Broadway

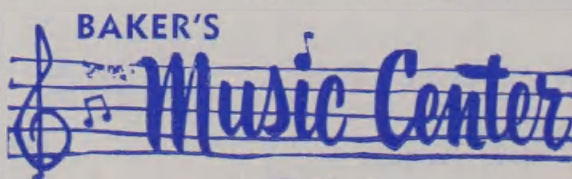
CLASS B

100 Yard dash	10.1 seconds	1956	Parker, Valier
220 yard dash	22.3 seconds	1959	R. Johnston, Fairfield
440 yard dash	50.5 seconds	1959	Lowney, Anaconda Central
880 yard run	2:01.0	1959	R. Wherley, Loyola
Mile run	4:32.4	1959	G. DeVries, Conrad
120 yard high hurdles	15.4 seconds	1956	Lohse, Choteau
		1954	Wagenaar, Lodge Grass
180 yard low hurdles	20.4 seconds	1958	Knapton, Whitefish
Pole vault	12 ft. 2.5 inches	1954	R. Hankins, Whitefish
Shot Put	55 ft. $\frac{3}{8}$ inches	1958	R. Frisbee, Cut Bank*
Javelin	197 ft. 5 inches	1938	R. Gustafson, Corvallis*
Discus	153 ft. 1 inch	1955	P. Nelson, Libby
High jump	6 ft. 3 inches	1940	S. Muchmore, Drummond
Broad jump	22 ft. 3 inches	1959	J. Bjork, Harlowton
880 relay	1 min. 32.7 seconds	1959	Broadwater Co.

Speaking of Records . . .

We are proud of our stock of current, standard and pop records . . . one of the largest in the Northwest. You'll get personalized attention for all your record needs.

Naturally . . .



310 N. Higgins

Phone LI 9-4165

52 YEARS OF PROGRESS IN MISSOULA

Electrical Service Since 1908

WALFORD ELECTRIC COMPANY

513 N. Higgins

Phone LI 3-4111

CLASS C

100 Yard dash	10.0 seconds	1957	Grasky, Sacred Heart, Miles City
200 yard dash	22.2 seconds	1957	Weidner, Troy
440 yard dash	50.4 seconds	1958	Weidner, Troy
880 yard run	2:03.3	1959	Ward, Holy Rosary
Mile run	4:47.8	1959	Strobel, Terry
120 yard high hurdles	15.5 seconds	1959	Fuhrmann, Charlo
180 yd. low hurdles	20.5 seconds	1957	Buck, Cascade
Pole vault	11 ft. 8 inches	1958	Harmley, Three Forks
Shot Put	50 ft. 7¾ inches	1958	Paige, Twin Bridge
Javelin	174 ft. 1 inch	1959	L. Brundage, St. Regis
Discus	140 ft. 1½ inches	1956	Wirtz, Corvallis
High jump	6 ft. 6 inches	1959	Hoppe, Townsend*
Broad jump	22 ft. 3 inches	1959	Simpson, Superior
880 relay	1 min. 35.8 seconds	1959	Broadwater Co.

THE CLUB CHATEAU

60 Blocks East on Highway 10

Featured On Friday:

The Fabulous Seafood SMORGASBORD

RESERVATIONS: Phone LI 9-3776

SEAFOOD STEAKS CHICKEN

Open Evenings—
After the Games
for your pleasure

Down Memory Lane

By Dr. Asa Willard

Editor's Note:

Until his death last year on the eve of the 1959 Interscholastic meet, Dr. Asa Willard had served as an official at the meet ever since its inception in 1904. His story, written for the 53rd Interscholastic, is being reprinted this year because of the tremendous interest it aroused in last year's program.

Memories of the earliest Interscholastic recalled would be memories of the first one run. That was in 1904.

The bleachers were back of the gym which later became the girls gym and which now is called the T.V. Building. It is the frame building just northeast of Main Hall and near the track. The bleachers sloped down from just below the east edge of the roof, and may have held five or six hundred. The quickest way to reach the University was by a board walk running from the east end of the 300 block on South Fifth St. East directly to the campus. There were no houses at all in the area traversed by the walk. The buildings on the campus were Main Hall, the wooden gym building referred to, old Science



Scene of the first Interscholastic meet held in 1904. The bleachers were set up at the rear of the existing building now known as the television center.



Down Memory Lane . . .

Hall to the south and west of Main Hall and old Craig Hall, a girls dormitory on the south side of the oval, presided over by Mrs. J. Wilsen Moore. The crowd was scattered about most everywhere with hundreds of kids on the hillside.

The weatherman smiled, as he certainly has usually, contrary to the oft-heard remark, "Oh sure it will rain this week; it's track meet week." We seem to remember, especially, the times he didn't smile, for snow and rain isn't conducive to a comfortable track meet.

There were at the first meet nineteen schools in competition and about one hundred competitors. Everyone competed against everyone else whether he came from a town of 200 people or one of 20,000. There were no A, B and C divisions. For instance, one boy was entered from Virginia City (named Wiles) which was credited with two or three hundred people. He was just entered in two events—the mile and the two mile. He won both of them.

There were three events then that do not appear now—the two mile, the hammer throw and the fifty-yard dash. After a few years these were eliminated. The insufficiently trained youngsters would run their hearts out literally in the two mile and it was rightly considered more detrimental than otherwise and was cast out. The hammer in the hands of the not too experienced young performers had a dangerous habit of heading towards a group of people not anyways near where it was supposed to land, and the hammer throw was replaced by the javelin throw. The fifty-yard dash became almost an impossibility from the judges' standpoint. Every boy figured he could do fifty yards and it seemed that most of them entered it and they would come down the track like a small herd of stampeding buffaloes. To the confusion of the judges all would seem to land on the finish line at once. Sometimes it was possible for the judges to discriminate enough to pick first place, but the other places had to be more or less guessed at, so the fifty-yard dash was left off too.

This was the first Missoula County High School team to enter the Interscholastic meet, in 1904.



The Interscholastic Program

Printed in our plant . . .

**Commercial Printing Department
MISSOULIAN PUBLISHING CO.**

Down Memory Lane . . .

One hundred and twenty-six points were possible at the first meet and Missoula won with twenty-three. Butte had eighteen points, Helena sixteen, Bozeman fourteen and one-half, Flathead thirteen and Virginia City ten.

All Bozeman's points were made by one boy (Moxley) as were Virginia City's, and all of Helena's points were made by Pigott who won the individual. Dinsmore of Missoula made thirteen of Missoula's twenty-three points. Dinsmore, Demers, Forbis, Jones and Ambrose accounted for the Missoula points. The team was hauled back to town in an open hack, ribbon-bedecked and drawn by some fifty Missoula rooters.

The relay race, as I recall, didn't count in the score. It was won by Deer Lodge.

It took the distribution of the nine points of the high jump, a last event, to decide the meet. Butte could have won. Incidentally, she won the second meet with twenty-seven points, with Missoula having 25 and Anaconda 22.

It has been interesting to watch the effect of the pressure of the contests upon the competing youngsters. Some get nervous and diverted and don't do their best. Others outdo themselves sometimes. I recall one boy from Missoula — Arthur Bishop — he had never vaulted in practice more than ten feet but went something like ten feet ten inches in competition. At the U. years later he was quarterback of the football team.

Many little happenings of humor and human interest have cropped out incident to the meets. In one of the earlier meets, Buddy Phelps, a little colored boy from Butte, won the sprints and the individual. When he was called to the platform and handed his medal in the evening at the high school he beamed and said, "Ah shore is proud of myself." And he was obviously so sincere and happy that egotism wasn't in the picture at all.

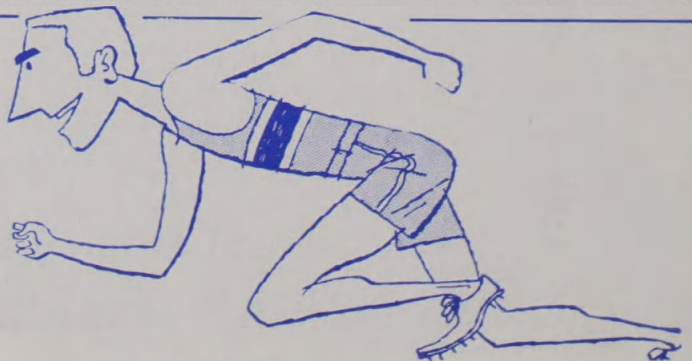
The highest number of points made at any meet was 55 — made by Missoula.



Three Interscholastic hammer throwers. This event was discontinued nearly 50 years ago, so the picture was probably taken about 1910.

Be a Winner!
Use the Complete
Banking Service of the

**WESTERN MONTANA
NATIONAL BANK**



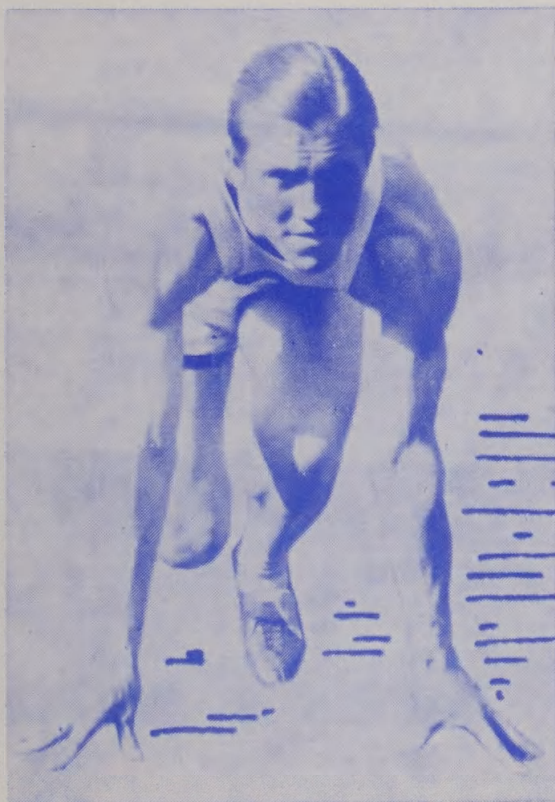
Down Memory Lane . . .

It is interesting to compare the records made at the first meet with those of today:

First Meet Records

Today's Record

11 seconds	100 yards	9.8 seconds
24 seconds	220 yards	21.6 seconds
57½ seconds	440 yards	49.9 seconds
2 min. 17½ seconds	880 yards	1 min. 58.7 seconds
5 min. 10 seconds	mile run	4 min. 27.6 seconds
18.7 seconds	120 yd. high hurdles	14.8 seconds
(The early high hurdles were 3 inches higher than now.)		
28½ seconds	220 yd. low hurdles	20.6 sec. (180 yds.)
18 ft. 2 inches	broad jump	22 ft. 8 inches
5 ft.	high jump	6 ft. 6 inches
8 ft. 8 inches	pole vault	12 ft. 10 inches
32 feet	shot put	55 ft. ¾ inches



Two top sprinters of the 1920 and 1930 era were Russ Sweet (left) and Roy Peden (above) of Miles City. Sweet was a Pacific Coast sprint champion and all-time great for the Grizzly football team after graduating from CCHS, and Peden came to the University in the mid-30's to win several PCC sprint titles for the Grizzlies.



FILM FINISHED FAST

SEVEN-HOUR DEVELOPING AND PROCESSING

BLACK-AND-WHITE—In before 10 a.m., ready by 5 p.m.

EKTACHROME—In before 9 a.m., ready by 5 p.m.

MISSOULA DRUG COMPANY

We're open at 8 a.m., Monday through Saturday . . . you can drop films to be finished in our special box on the front door at any time, day or night.

Down Memory Lane . . .

However, in thinking of the difference between the records of the first meet and present ones, especially as to the races, we should keep in mind the difference in training and training facilities, equipment and the tracks run on. Many of the boys at the early meet performed in tennis shoes and some of them had never heard of spiked track shoes until they reached the Interscholastic.

The smaller schools have often contributed the outstanding performers, as witness the javelin throw of 197 feet and 5 inches of Roy Gustafson of Corvallis, which stood as the record for years, as

did the 50 ft. 4 inches shot put of Blumenthal of Philipsburg. Indian boys have made splendid showings at some of the meets, especially in the races.

Many of the boys from the Interscholastic went on to win laurels in college. Russell Sweet, from Miles City, won the individual one year at Interscholastic. Later, representing MSU, held the Coast conference title in the sprints, as did Arnold Gilette, from Lewistown, in the distance races. Sweet was a powerful runner and if he could run the 100 in ten seconds on a track he



An early-day Custer County High School track team. This picture was taken about 1910 or 1911.

"Time Out" means "Refreshments"

Coca-Cola



**SUN • RISE
ORANGE**

Bottled by *Coca-Cola Bottling Company* of Missoula

Down Memory Lane . . .

could run it on a muddy field wearing a football suit. He and Wild Bill Kelly later furnished a passing threat for the Grizzlies. Gene Clawson and Dick Doyle established college records in the weight events. Greg Rice went on from the Interscholastic to equal world's indoor records in the distance races.

I have always expected the ladies to present a "Babe Didrickson" at some meet and show the boys up, but none has ever appeared.

Personalities recalled of earlier meets, who

are always present and some still having active part in present-day meets, are: Dr. Joe Howard, of the U.; Ray Rocene, sports writer; Harry Adams and Jiggs Dahlberg, of the U.; Harry Dahlberg, Butte; Prof. Walter Scott, Butte; Harold Stearns, editor of Harlowton Times; Attorney E. C. Mulroney; Clyde Carpenter, Billings; Frank Grady, Prof. G. D. Shallenberger, of the U. George Varnell, well-known sports writer for the Seattle Post-Intelligencer, for many years was identified with the meets as starter. In recent years Lou Hartsell has efficiently held that important post.



One of the outstanding Interscholastic figures in the mid 30's was distance ace Greg Rice (right) of Missoula, shown here at the start of an exhibition race in 1940 against Mel Truitt of Indiana and Dixie Garner of Washington State. Rice, at that time the outstanding distance runner in the nation, easily defeated his two opponents in this feature of the 1940 Interscholastic. Visible in the rear, wearing his familiar hat, is Dr. Asa Willard.

Interscholastic Visitors . . .

Be our guest at the biggest dance of the weekend . . . Saturday night, 9-12 in the MSU Lodge

Bob Bork's 15-Piece band. The most heavenly music in the state . . . Sponsored by AF ROTC

Admission 25 cents for all visitors and MSU students . . .

Dance 'till midnite

Acknowledgments

The Interscholastic Committee wishes to extend its thanks to the following organizations and individuals for their invaluable assistance in making the 53rd Interscholastic a success:

Spurs and Bear Paws for their advanced ticket sales work.

The Kiwanis, Lions, Rotary and Exchange service clubs.

The Missoula Mercantile.

The Missoula Chamber of Commerce.

The Missoula merchants who contributed so generously to the advanced ticket sales campaign and program advertising.

Missoula city and county officials.

The Montana University band and its director, James Eversole.

The Pershing Rifles of the University ROTC.

The Daily Missoulian and Sentinel and County Times and Montana Kaimin.

Radio Stations KGVO, KXLL, KQTE, KYSS, and television station KMSO-TV.

The campus ticket sales committee.

The University Traditions Board and cooperating fraternities, sororities, dormitories and other student groups.

Earl Martell, director of Student Activities-Facilities.

Miss Gertrude Chamberlain and Mrs. Homer Anderson, directors of Food Services and Residence Halls.

The many Montana citizens who contributed their time and talent as judges in the various events.

Sigma Delta Chi for the advance publicity and meet coverage.

