

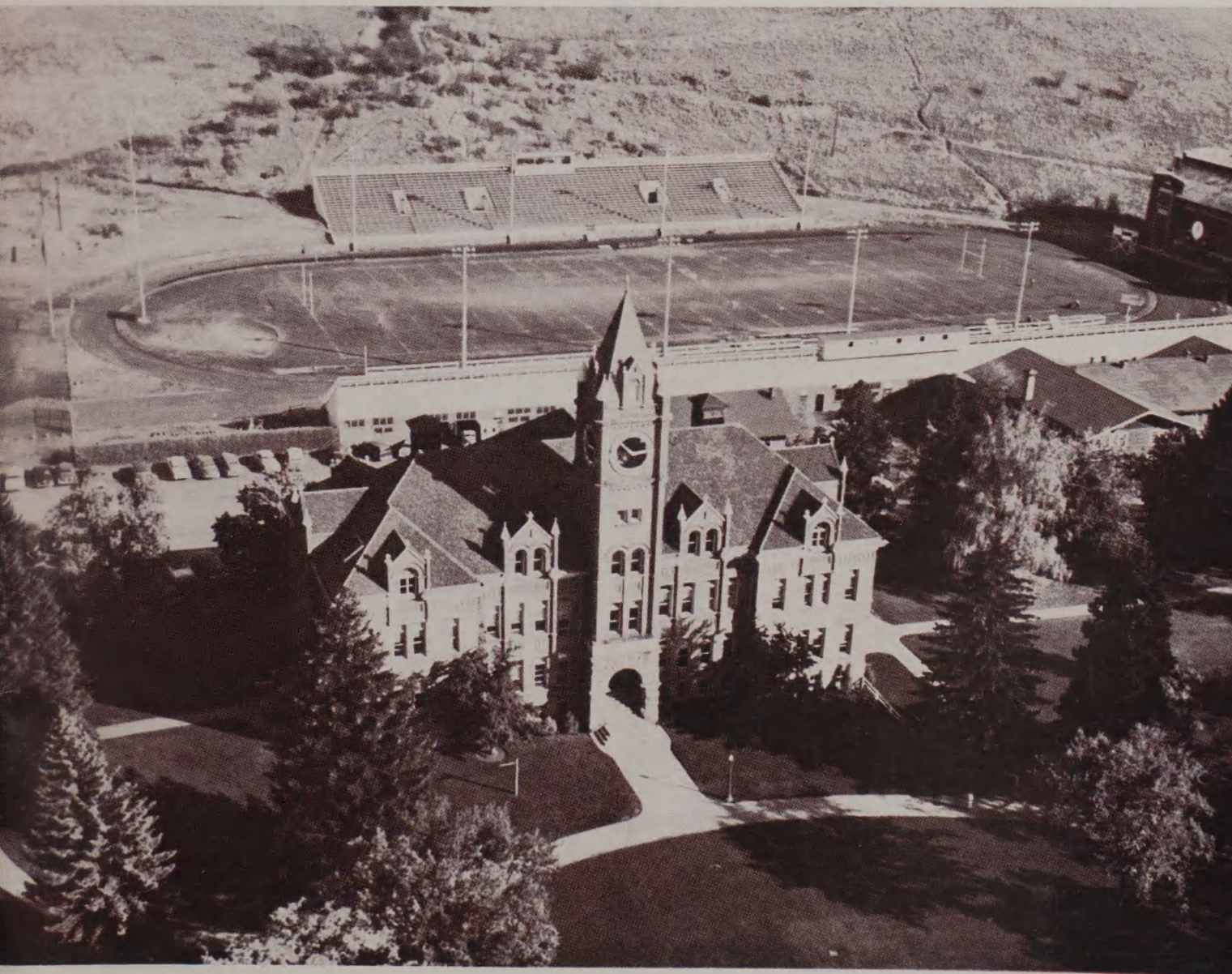
THE
55th
ANNUAL



INTERSCHOLASTIC

OFFICIAL SOUVENIR PROGRAM

PRICE 50 CENTS



MONTANA STATE UNIVERSITY — MAY, 1961 — MISSOULA, MONTANA



To . . .

Lou Hartsell

This spring Lou Hartsell passed away. He left behind many friends and a record as one of those who had helped make the annual Interscholastic Meet the success it is. Lou was the Meet's official starter for six years and gave unselfishly of his time and energy to Montana's high school athletes so that they might enjoy the world's oldest, and perhaps finest, sport, track.

Lou's name has become a part of Interscholastic, just as the names of so many others including Ray Rocene, Dr. Joe Howard, the Dahlberg brothers, Jiggs and Harry, Asa Willard, Harry Adams, Prof. Walter Scott, Hal Stearns, Clyde Carpenter, the Hoons, father and son, E. C. Mulroney, Frank Grady, Prof. G. D. Shallenberger, and many others have.

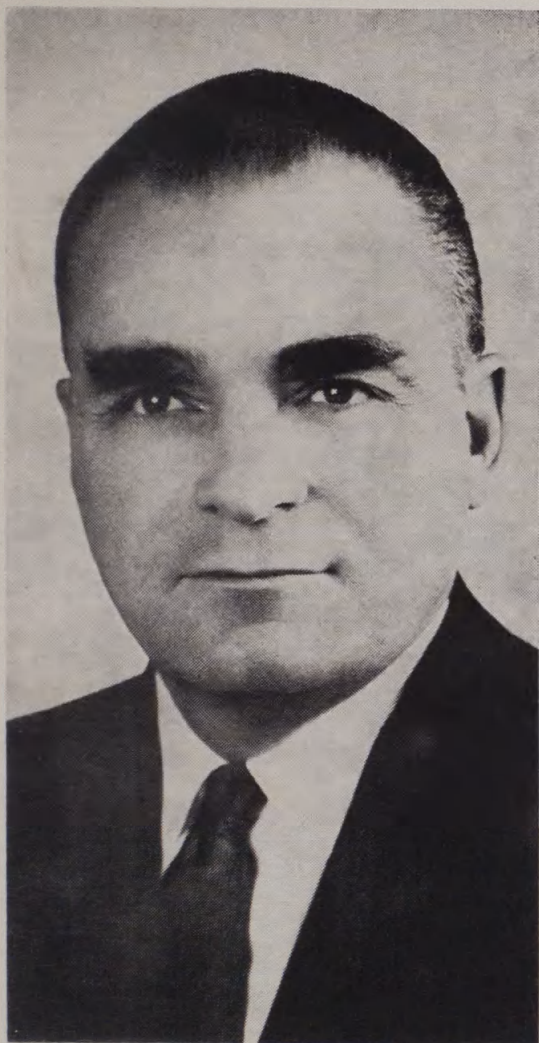
The bark of Lou's starting gun sent many high school runners down Dornblaser's cinders and frequently on their way to collegiate sports fame. The 1961 Interscholastic Committee is proud to dedicate this program to him.

(Lou Hartsell had many friends. One of them offered this poem to the Interscholastic Program when he learned it was to be dedicated to Lou. The author, who prefers to remain nameless, recalls the six years Lou started Interscholastic runners, the years Lou wore Montana's Copper, Silver and Gold and the man.)

The Grizzly Great of yesteryear
On this trackmeet day, he is here;
Look, can't you see him with poised gun —
A smile flashing in the sun?
The pistol cracks, another race is run.

Starter of The Meet was "Big Lou"
Friend of fandom, and coaches, too;
Always there on the sporting scene
Colorful, kind, with cheerful mien
His spirit lives on this cinder and green.

As a father he was the best
Ask those who know—they will attest;
A citizen, too, he made a name
Proud and honest, he did attain
This tribute: Lou Hartsell played the game.



State of Montana
Office of the
Governor
Helena

Greetings to Interscholastic Participants and Visitors:

Welcome to the 55th annual Interscholastic at Montana State University. This weekend over a thousand of Montana's finest high school athletes and students will climax nearly a year of preparation in track and field, golf, tennis, speech events, dramatics and journalism with contests to determine which of them may bear the title "champion."

Such striving for success and perfection through competition is part of our American way of life. Montana can take pride in her youth at this and every Interscholastic Meet. Indeed, we of Montana can be proud of the meet itself which has grown from 19 schools and 100 competitors in 1904 to today's meet which is expected to attract 1500 participants from 130 schools.

On behalf of the state of Montana and myself, I offer congratulations to each of the participants for his work in preparation for this event. To all of you, may I wish the best of fortune. I hope many Montanans will be at Dornblaser Field this weekend and elsewhere on the University campus to view the several Interscholastic events.

Sincerely yours,

Donald G. Nutter

Governor

It's Been 57 Years...

(Editors Note: A lot has happened since that first Interscholastic starters' gun sounded and sent half a dozen young men scurrying down the track to see who was the fastest high school runner for a 100 yards in 1904. The Interscholastic Meet has grown and this weekend, the 55th annual running of the event, it will be the biggest in history attracting some 1,500 participants from almost every high school in Montana)

We are indebted to Dr. Asa Willard, who passed away on the eve of Interscholastic in 1959 ending many years of service at the meet, for many of highlights of the Interscholastic as listed below. Dr. Willard saw every meet up to his death and recalled many incidents of

of the Interscholastic in an article included in the 1959 and 1960 programs.

Others assisted in this return to 1904 including the present Interscholastic Chairman, Charles Hertler, Ray Rocene of the Daily Missoulian, and Cyrile VanDuser of the University News Service. These are but a few of the many who have made the Interscholastic what it is today. Rather than be embarrassed by omission of names we're too young to recall, let us instead offer appreciation to all who have assisted with the Interscholastic, through its history.

The only interruptions were during the fighting of World Wars I and II. From the looks of this weekend, the Interscholastic has many, many more years ahead of it.)

It's been 57 years since that first Interscholastic Meet at Montana State University in 1905 when 19 schools and 77 track and field contestants sought honors on the field behind Main Hall. There was no Dornblaser Field then; the bleachers were tacked onto the back of what is now the T.V. Building a few yards north of the present stadium.

A roof-covered the wooden seats and maybe six or seven hundred spectators could crowd into the stands to watch those 77 high school athletes run, jump and throw.

Since those early years Missoula and the University have grown. In the first few years of the 20th Century there were few houses in the Uni-



This was the first Missoula County High School team to enter the Interscholastic meet, in 1904.

versity area. A board walk ran from the east end of the 300 block on South Fifth St. East directly to the campus. Then Main hall dominated the campus, as it does today, and was surrounded by a cluster of brick and frame buildings including the T.V. Building, then the University gym, the Old Science Hall and what is now the Math Building. In those days the Math building was the women's dorm.

Most of the crowd was scattered on the sides of Mount Sentinel at that first meet. No classes had been organized for competition. The boys from a town of 200 ran against the boy from the city of 20,000. One lad named Wiles hailed from Virginia City which was then credited with er than three hundred souls. He entered the mile and two mile races and won them both.

Those first few meets included three events not now on the schedule, the hammer throw, 50 yard dash and two-mile run. The hammer throw was eliminated because the sturdy young lads who heaved the lead ball on the end of the steel chain often had poor aim. More frequently than not once the thing was in the air it would head directly toward a group of people, far from it's intended destination.

The two-mile run was dropped because the racers ended the contest often in a state of total exhaustion. They literally ran their hearts out and endangered their health.

The 50 yard dash more often than not ended up in a dead heat with every other contestant in the entire meet claiming, and perhaps justly, victory. So, that quickly became a thing of the past after judges decided to content themselves with selecting individuals out of small herds.

The student newspaper at the University re-

ported the events dutifully in the popular style of the post-victorian era. The Kaimin, really more concerned with the doings of a couple of literary societies than news and sports, faithfully regaled its readers with a tale of how one group of contestants were treated to an automobile ride around the Oval. Another luckier group received a pleasure jaunt four or five miles into the wilds of Montana to Fort Missoula.

Those early contestants were an interesting lot. Most the competitors in track and field had never worn, much less seen, spiked shoes and raced in tennis shoes, over often muddy and bumpy clay tracks. Some took their mother's shears to an old pair of pants and made knee-length shorts. Their shirts also were colorful and ranged from dad's old undershirt to a turtle-neck sweater that may or may not have come off at race-time. A versatile lot, pompadours were popular with athletes who used the extra shock of hair as a football helmet once the leaves began to turn brown in the fall.

Weather was a big headache for the Interscholastic Committee then as well as now. There has been rain, snow, hail, thunder storms, mud, cold, sleet and even some sunshine during Interscholastic. However, the pleasure of the weatherman has little to do with the excitement of the meet and records are as likely to fall under a cover of wind, snow and dust as they are under blue skies and warm temperatures.

Since those first meets many events have been added. Today many participants in the annual meet are interested in speech events, journalism, golf and tennis as well as track and field. But regardless of what may be added, Interscholastic will to many remain first, and always, Montana's greatest track meet.

Scene of the first Interscholastic meet held in 1904. The bleachers were set up at the rear of the existing building now known as the television center.



ASMSU's Interscholastic...

For the most part, the high school visitor's and participant's time during the Interscholastic will be taken up by the competition in the several events. However, the Associated Students at Montana State University (ASMSU) have planned a program that will at the same time be entertaining and serve as a introduction to the University.

In addition to enjoying ASMSU's program, high school students and Interscholastic visitors are invited to make use of the University's facilities. The bowling alley in the Women's Center will be open as will the grill in the basement of the Lodge. Complete meals similar to those served in the student cafeteria are offered as well as snacks.

Officially, Interscholastic begins Friday morning at 6:30 when boys' golf gets underway at the Missoula Country Club. Thursday, numerous events take place that may prove of interest to the Interscholastic competitor and visitor.

At 1 p.m. Thursday Montana's Grizzlies entertain Utah State University in a pair of baseball games at Campbell Park, a few blocks south-west of the campus. MSU's varsity golf and tennis teams also will see action against Utah State Thursday at the University golf course and tennis courts. All contests count towards the Skyline Conference championship.

Thursday evening at 8 the Grizzly football team climaxes a month of spring practice with the annual intersquad game on Dornblaser Field. This game is always a good indication of next fall's gridiron teams and has proven popular with previous Interscholastic crowds.

Immediately following the football game the M-Club fights will be held in the MSU Field House. Several good bouts are planned in a program expected to pack the Field House.

Friday night the Roman Catholic organization at MSU, Newman Club, will hold its annual songfest on the Oval. Fraternities and sororities compete en-masse for trophies in an event that has held crowds of over a thousand while standing or sitting in a pouring rain.

Many University living groups decorate their houses during Interscholastic weekend and most will open their doors to high school students interested in the social side of campus life. Brantly Hall, a women's dorm, will be the scene of an open house for all girls attending Interscholastic. The affair will be held on Friday from 2 to 4 p.m. in the Brantly Hall Lounge.

Several academic departments are planning open houses also, including the School of Pharmacy, the botany, geology, chemistry and home economics departments. On Saturday University students will offer tours of the campus beginning at the Lodge.

Friday is a holiday for MSU and University students will be busy preparing for the weekend's program and attending Interscholastic events. On Saturday night ASMSU will sponsor a Bar-B-Que on the Oval with free-eats to Interscholastic contestants. During the feast members of MSU's student body will provide entertainment.

One group of students that certainly deserves mention is the men's professional journalism fraternity, Sigma Delta Chi. This group of about twenty men are responsible for the great bulk of news gathering and distribution during the Interscholastic. Some will rise at dawn on Friday and Saturday to cover the golf and tennis matches. Others will work far into the small hours of Friday, Saturday and Sunday morning to be certain every detail has been adequately covered. They have been busy for several weeks sending out advance information concerning the meet.

Other students assist in taking pictures of winners, keeping score, selling pop and programs and keeping traffic moving. The hurdle attendants and track and field crew are students as are helpers in the non-athletic parts of the meet.

Several other activities arranged by ASMSU including dances will be announced during the meet and at the registration table. While here, high school students are urged not to overlook the opportunity to investigate possible college courses leading to a degree and a career.



Ten lines leading to ASMSU's Bar-Be-Que promise quick eats for Interscholastic participants and visitors alike. Freshmen men and women living in the University dorms will join Interscholastic participants on the Oval Saturday night following the track meet's final event for a feast of champions. Special entertainment by MSU students will make the chow that much more tasty.



Speed and service are the watchwords of Spurs, sophomore women's honorary. The Spurs will man the scoring booth at the track meet, assist in the honoring of track winners and run errands to keep the Interscholastic running at full speed and smoothly.

DELANEYS BUREAU OF PRINTING

- ★ Printing
- ★ Supplies
- ★ Furniture

Phone: LI 9-4113

Missoula

Program of the Meet

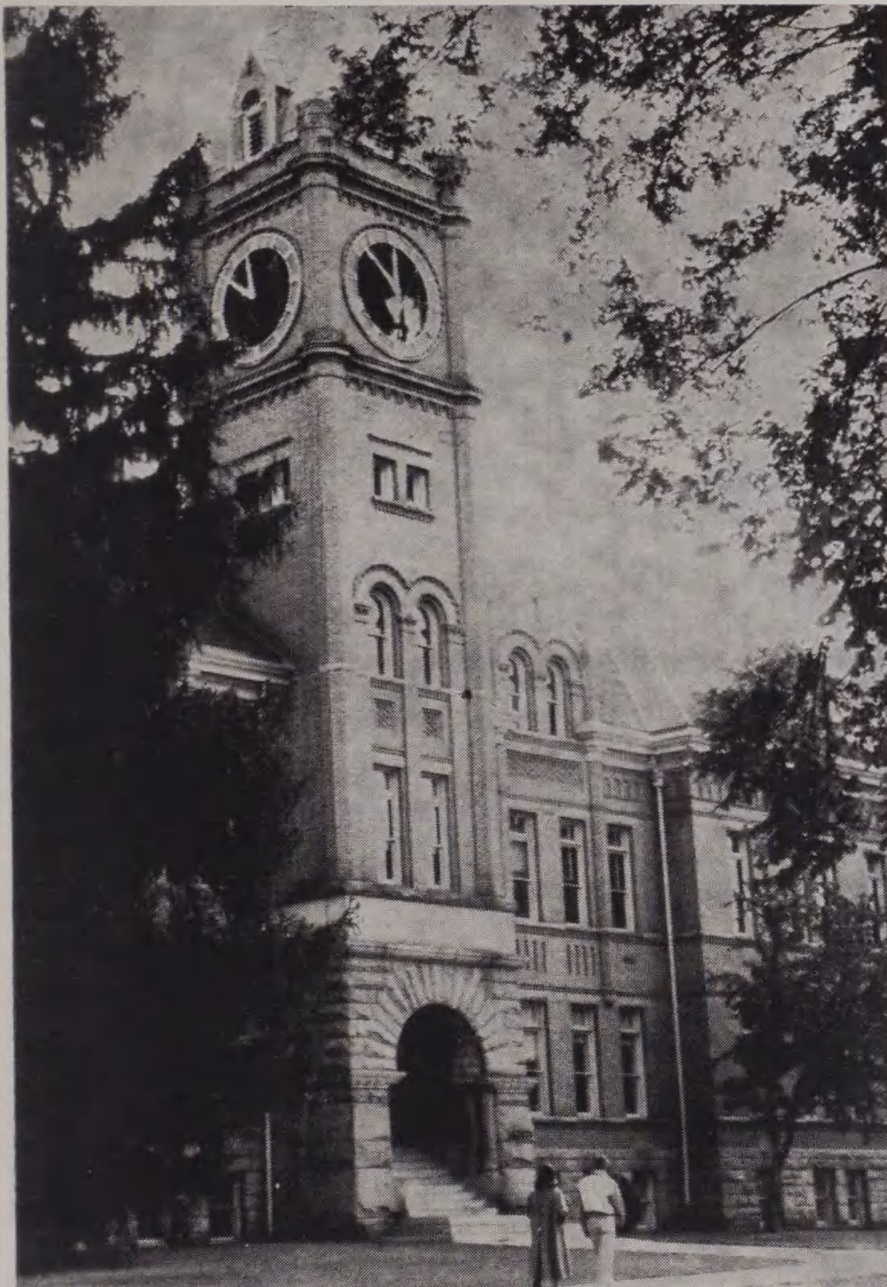
FRIDAY, MAY 19

- 6:30 a.m.—**Boys' Golf.** All contestants meet in front of the Lodge for transportation to Missoula Country Club course.
- 7:30 a.m.—**Girls' Golf.** All contestants meet in front of the Lodge for transportation to Missoula Country Club course.
- 8:00 a.m.—**Boys' Tennis.** All participants report to Men's Gymnasium.
- 8:00 a.m.—**Extemporaneous Speaking.** Drawings for topics in Liberal Arts Hall, 1st floor.
- 8:00 a.m.—**Original Oratory.** Round I. Assignments in Liberal Arts Hall, 1st floor.
- 8:00 a.m.—**Declamation and Oral Interpretation of Literature.** Meeting of all contestants in Liberal Arts Hall, 1st floor.
- 8:00 a.m.—**Little Theater Festival.** University Theater and Masquer Theater.
- 8:30 a.m.—**Boys' Tennis.** Singles and doubles. University Courts.
- 8:30 a.m.—**Girls' Tennis.** All contestants report to Women's Center.
- 9:00 a.m.—**Girls' Tennis.** Singles and doubles. University Courts.
- 9:00 a.m.—**Meeting of athletic representatives** of all schools at Men's Gym for distribution of contestant numbers.
- 9:00 a.m.—**Original Oratory.** Round II.
- 9:00 a.m.—**Extemporaneous Speaking.** Round I.
- 9:00 a.m.—**Interscholastic Editorial Association.** Journalism Building.
- 10:00 a.m.—**High School Directors Meeting.** Masquer Theater.
- 10:00 a.m.—**Debate.** Round I. Assignments in Liberal Arts Hall, 1st floor.
- 10:00 a.m.—**Declamation.** Round II.
- 10:00 a.m.—**Oral Interpretation.** Round II.
- 11:00 a.m.—**Original Oratory.** Round III (semi-finals).
- 1:00 p.m.—**Debate.** Round II.
- 1:00 p.m.—**Oral Interpretation.** Round III.
- 1:00 p.m.—**Presentation of the Colors.**
- 1:10 p.m.—**Track and Field Meet.** Parade of Athletes at Dornblaser Field.
- 1:30 p.m.—**Little Theater Festival.** University Theater and Masquer Theater.

- 2:00 p.m.—**Extemporaneous Speaking.** Drawing for topics in Liberal Arts Hall, 1st floor.
- 2:00 p.m.—**Declamation.** Round III.
- 3:00 p.m.—**Extemporaneous Speaking.** Round II.
- 3:00 p.m.—**Oral Interpretation.** Semi-Finals.
- 4:00 p.m.—**Debate.** Round III.
- 7:15 p.m.—**Newman Club Songfest** on Oval.
- 8:00 p.m.—**Declamation, Oral Interpretation and Original Oratory.** Finals. University Theater.

SATURDAY, MAY 20

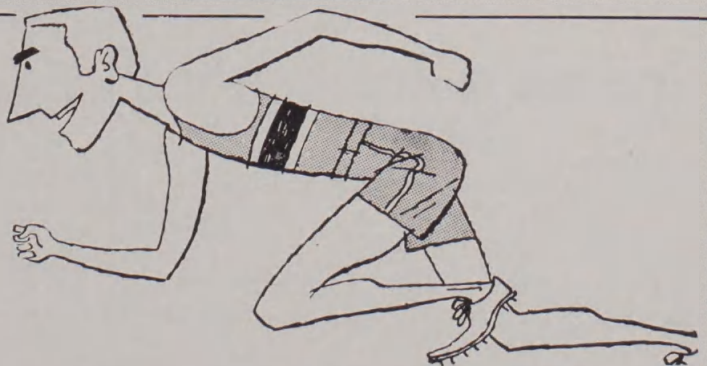
- 6:30 a.m.—**Boys' Golf.** All contestants meet in front of the Lodge for transportation to Missoula Country Club course.
- 7:30 a.m.—**Girls' Golf.** All contestants meet in front of the Lodge for transportation to Missoula Country Club course.
- 8:00 a.m.—**Boys' Tennis.** All participants report to Men's Gymnasium.
- 8:00 a.m.—**Girls' Tennis.** All participants report to Women's Center.
- 8:00 a.m.—**Debate.** Round IV.
- 8:00 a.m.—**Little Theater Festival.** University Theater and Masquer Theater.
- 8:30 a.m.—**Boys' Tennis.** Singles and doubles. University Courts.
- 9:00 a.m.—**Girls' Tennis.** Singles and doubles. University Courts.
- 9:00 a.m.—**Extemporaneous Speaking.** Drawing for topics in Liberal Arts Hall, 1st floor.
- 10:00 a.m.—**Extemporaneous Speaking.** Round III.
- 10:30 a.m.—**Debate.** Round V (quarter-finals).
- 12:00 Noon—**Luncheon Meeting** of teachers of English, Drama and Speech.
- 1:15 p.m.—**Track and Field Meet.** Finals.
- 1:30 p.m.—**Little Theater Festival.** University Theater and Masquer Theater.
- 1:30 p.m.—**Debate.** Semi-finals.
- 2:00 p.m.—**Extemporaneous Speaking.** Drawing for topics in Liberal Arts Hall, 1st floor.
- 3:00 p.m.—**Extemporaneous Speaking.** Finals.
- 4:30 p.m.—**Debate.** Finals.
- 5:30 p.m.—**ASMSU Bar-B-Que** on Oval.
- 8:00 p.m.—**Little Theater Festival.** University Theater.
- 8:00 p.m.—**Awarding of Prizes.** University Theater



MSU's best known landmark, Main Hall, is the center of the campus. One of the first buildings, the tower houses a memorial clarion dedicated to alumni and others. This building is still used for classrooms although its primary purpose is to provide office space for the University president, Dr. Harry K. Newburn, and other members of the administrative staff. In front of this building on Friday night the Newman Club will hold their annual songfest. Saturday night it serves as a backdrop for the ASMSU Bar-Be-Que.

Western Hospitality!
A Winner Every Time

WESTERN MONTANA NATIONAL BANK
MEMBER FDIC



Interscholastic Editorial Association

All-State Newspaper Ratings, 1960

Iniwa, Great Falls High School
Konah, Missoula County High School, Missoula
Laurel Leaves, Laurel High School
Centralite, Butte Central High School
Rosarian, Rosary High School, Bozeman
Lariat, Augusta High School
Skyline, Charlo High School
Hi-Lite, Columbus High School
Evergreen, Lincoln County High School, Eureka
Broadcaster, St. Ignatius High School
Refiner, Sunburst High School
Cliff Dweller, Thompson Falls High School
Belfry Echoes, Belfry High School
Cougar, Custer High School
Static, Ennis High School
Mission Bells, Mission High School, Hays
News, East Junior High School, Great Falls
Western Star, West Junior High School, Great Falls

Sigma Delta Chi, professional journalism fraternity, will award six trophies for writing in three divisions: news feature, editorial and sports. Individual trophies will be awarded to contestants placing first in each division, and larger traveling trophies will be awarded to the schools from which the winning writers are delegates. A school winning one of these trophies three times will gain permanent possession.

Theta Sigma Phi, professional journalism fraternity for women, will make two "outstanding journalist awards" to the girls selected for having shown most notable achievements in scholarship, journalism activities and other high school activities. Nominees will be selected by high school publication staffs and advisers.

The Montana Interscholastic Editorial Association will meet in the Journalism building at 9 a.m. Friday. Each member school is entitled to two voting delegates. Delegates must be listed on the school's entry blank.

Annual newspaper ratings will be announced at the close of the Friday morning session. Awards in this contest will be made upon the basis of the following classifications:

- A—Enrollment 500 or more
- B—Enrollment 250 to 500
- C—Enrollment 100 to 250
- D—Enrollment under 100
- E—Inserts or departments of community newspapers
- F—Junior high school

Papers in each class will be rated All-State, Superior, Good or Fair.

For additional information, write to Prof. Edward B. Dugan, School of Journalism, Montana State University, Missoula, Montana.

DIXON & HOON SHOE STORE

Men's, Women's and Children's Shoes

House Slippers

Hosiery

133 North Higgins
HAROLD E. WOODS

Missoula, Montana
WM. N. DIXON, JR.

CHIMNEY CORNER RESTAURANT

Just west of the Campus

1025 Arthur Ave.

Speech Events...

Sweepstakes Winner, 1960: Great Falls Central High School.

A trophy is awarded by the Montana High School Association to the school scoring the greatest number of points in all events.

Declamation

Finalists for 1960: Oratorical, 1st—Barbara Johnstone, Missoula H.S. 2nd—Dick Denda, Billings H.S. 3rd—Penny McGinnis, Missoula H.S.

Dramatic, 1st—Bob Dewey, Great Falls Central H.S. 2nd—Karen Kinkard, Great Falls H.S. 3rd—Corrine Yardley, Great Falls Central H.S.

Humorous, 1st—Melinda Wilson, Billings H.S. 2nd—Gail Jewett, Flathead H.S., Kalispell. 3rd—Jane Nelson, Missoula H.S.

Oratorical Declamation

Contestant	High School	Title
DISTRICT I		
Stephanie Swanson	Fairview H. S.	What Price Freedom
Sharon Entzel	Dawson Co. H. S.	America's King Size Tom-Boys
Patsy Harvey	Dawson Co. H. S.	The Big Parade
DISTRICT II		
Chuck Brastrup	Billings Sr. H. S.	The Unknown Soldier
Terry Guckeen	Billings Central H. S.	The New South
Dave Rye	Billings Sr. H. S.	The Return from Outer Darkness
Nancy Allen	Absarokee H. S.	Where Are You Going? Nowhere
DISTRICT III		
Carolyn Schlosser	St. Leo's H. S.	Today and Tomorrow
Carol Ragland	Great Falls Central H. S.	The Big Parade
Christine Moholt	Great Falls Central H. S.	Procrusters and the Parrot
Francis Wright	Great Falls H. S.	Conciliation with America
Stanlee Wardinsky	Great Falls H. S.	The One Less Traveled By
DISTRICT IV		
Sharon Jasmine	Havre Central H. S.	I Speak for Democracy
Daryl Sande	Havre Central H. S.	I Speak for Democracy
Karen Schroer	Chester H. S.	Challenge of Survival
Loretta Fritz	Chester H. S.	Arithmetic of Survival
Dennis Langston	Havre Public H. S.	Seek Individual Excellence

DISTRICT V

June Brooks They Stood Alone
Holy Rosary H. S.

Dee Eck
Bozeman Sr. H. S.

Maureen Tinsley Free Speech—A Duty
Butte Girls' Central H. S.

Patrick Burke McArthur's Speech Before the
Joint Session of Congress

Karen Palmer No Man Is an Island
Butte Girls' Central H. S.

DISTRICT VI

Evelyn Hawkins The Monster in the Public Square
Sacred Heart Academy

Terry McDonald Sinners in the Hands of God
Loyola H. S.

Steve Lemmer A Plea for Mercy
Loyola H. S.

Karen Buescher Ropes
Sacred Heart Academy

Jim Smyser Do We Value Our Free Civilization
Flathead Co. H. S.

"The Store for Men and Women Who Buy for Men"

Yandt's

KUPPENHEIMER CLOTHES DOBBS HATS
FLORSHEIM SHOES

403 N. Higgins

Phone LI 3-7711

P
A
U
L
,

PANCAKE PARLOR

16 Kinds of
DELICIOUS PANCAKES

★
KWIKYBURGER

For a Kwik Snack in Your Car

Highway 10 West

Dramatic Declamation

Contestant	High School	Title
DISTRICT I		
Pat Engle	Prairie Tree	
	Dawson Co. H. S.	
Wilma Johnson	Sixteen	
	Fairview H. S.	
Dave LaGree	The Button	
	Forsyth H. S.	
Sarah Hill	The Tell-Tale Heart	
	Dawson Co. H. S.	
DISTRICT II		
Emily Schladt	The Image of God	
	Billings Sr. H. S.	
Kathy Young	Medea	
	Billings Sr. H. S.	
Camilla Livingston	Portrait of Monica	
	Winnett H. S.	
Dianne Leach	Anastasia	
	Billings Sr. H. S.	
Jane Beck	A Silent Wait	
	Sweet Grass Co. H. S.	
DISTRICT III		
Naomi Fineman	Medea	
	Great Falls H. S.	
Brenda Forest	The Creation	
	St. Mary's of the Mount	
Katie Carnell	Sorry, Wrong Number	
	Fergus Co. H. S.	
Zona Hodges	The Lark	
	Great Falls H. S.	
Carol Brain	Medea	
	Great Falls Central H. S.	
DISTRICT IV		
Patty Semans	Sleep Walking Scene from Macbeth	
	Havre Central H. S.	
Ellen Gallus	Our Town	
	Havre Central H. S.	
Micki Gummer	A Worn Path	
	Chester H. S.	
Betsy Buker	The Bet	
	Chester H. S.	
Carrie Brady	The Creation	
	Chinook H. S.	
DISTRICT V		
Gay Schroff	The Madman	
	Park Co. H. S.	
Pat Cavanaugh	Anne of the Thousand Days	
	Butte Girls' Central H. S.	
Leslie Stein	The Button	
	Park Co. H. S.	
Marianne Shepard	In Rebecca's Room	
	Butte Girls' Central H. S.	
Shirley Richardson	Joey's Friend	
	Jefferson Co. H. S.	
DISTRICT VI		
Frank Schulz	All the King's Men	
	Loyola H. S.	
Monti Wilson	Quo Vadis	
	Missoula Co. H. S.	
Eileen Corr	Stage Door	
	Sacred Heart Academy	
Phil Miller	The Fall of the House of Usher	
	Missoula Co. H. S.	
Janice Wagner	The Diary of Anne Frank	
	Sacred Heart Academy	

Humorous Declamation

Contestant	High School	Title
DISTRICT I		
Bobby Childers	Bath Hour	
	Forsyth H. S.	
Carol Doyle		
	Sidney H. S.	
Gisella Reichenbach	June Night	
	Fairview H. S.	
Marilyn Schmidt	Speech Judge's Nightmare	
	Dawson Co. H. S.	
Kay Heinrich	The Bear Story	
	Custer Co. H. S.	
DISTRICT II		
Ken Tolliver	Mark Twain Tonight	
	Billings Sr. H. S.	
Melinda Wilson	The Girls in 509	
	Billings Sr. H. S.	
Shelley Brennan	Golf Lesson	
	Sweet Grass Co. H. S.	
Pam Watters	The Waltz	
	Absarokee H. S.	
Andrea Rostad	And Here I Am	
	Sweet Grass Co. H. S.	
DISTRICT III		
Mary Thibaudeau		
	Mr. Death and the Red-headed Woman	
	Great Falls High School	
Frank DuBois	No Time for Sergeants	
	Great Falls High School	
Joe Ingvalson	Tea House of August Moon	
	Great Falls Central H. S.	
Judy O'Brien	Romanoff and Juliet	
	Great Falls Central H. S.	
Robert Worchester	The Horse	
	Helena H. S.	
DISTRICT IV		
Claudia Potter	Eloise	
	Cut Bank H. S.	
Beverly Gratton	Betty at the Baseball Game	
	Chinook H. S.	
Duncan Morrison	Coffee, Tea or Milk	
	Havre Public H. S.	
Sylvia Jestrab	Happy Motoring	
	Havre Central H. S.	
Sandi Stein	How to Get the Best of Your Children	
	Havre Public H. S.	
DISTRICT V		
Patty Madson	Jimmy Jones Studies his Geog.	
	Park Co. H. S.	
Chuck Scott		
	Bozeman Sr. H. S.	
Chris McClain	Love's Labor Lost	
	Park Co. H. S.	
Frank Spragg		
	Bozeman Sr. H. S.	
Kathie Anderson		
	Ennis H. S.	
DISTRICT VI		
Coleen Henry	Auntie Mame	
	Sacred Heart Academy	
Kathy Tuxbury	Seventeen	
	Sacred Heart Academy	
Tom Demmons	Ransom of Red Chief	
	Flathead Co. H. S.	
Les Hankinson	Hazing of Valiant	
	Flathead Co. H. S.	
Steve Williams		
	Mr. Death and Redheaded Woman	
	Loyola H. S.	

Debate

Winners for 1960: 1st—Jack Mudd, Jim Pierson, Great Falls Central H.S. 2nd—Glen Kilpatrick, Dave McNicol, Great Falls Public H.S. 3rd—(tie) Pam Bompert, Jerry Cooper, Helena H. S.; Joe Almas, Bruce Brothers, Havre H. S.

Question for 1961: "Resolved: That the United Nations should be significantly strengthened."

Contestants High School

DISTRICT I

Darrell Knote, Gordon Jensen Sidney H. S.
Carl Nassif, Ray Saeman Dawson Co. H. S.
Gilbert Walker, Richard Sanford Sidney H. S.

DISTRICT II

Rex Stratton, Tony Jackson Billings Sr. H. S.
Margaret Burgoyne, Art Geiger Billings Ct. H. S.
John Crawford, Benny Jung Billings Sr. H. S.
Dick Crow, Ray Kent Red Lodge H. S.
Sharon Hall, Pam Van Oosten Billings Ct. H. S.
Karen Karnop, Elsie Mielke Harlowton H. S.
Arnold Wirth, Tom Mitchel Harlowton H. S.
Betty Aggers, Judie Funk Edgar H. S.

DISTRICT III

Dave McNicol, Lauren McKinsey Great Falls H. S.
Bill Pope, Tom Carabas Great Falls H. S.
Tom Power (Harry), Jim Walsh
..... Great Falls Central H. S.

Dave Wells, Bud Spall (Hugh)
..... Great Falls Central H. S.

Pam Bompert, Jerry Cooper Helena H. S.
Brent, Blohm Helena H. S.
Jack Henderson, Nick Downen Fergus Co. H. S.
Jim Altenhoven, Ed Longin St. Leo's H. S.

DISTRICT IV

Bruce McCollough, Danny Johnson
..... Havre Public H. S.
Jim Vandeberg, Joe Almas Havre Public H. S.
Monte Kuka, Jim Seelinger Havre Central H. S.
George Antunes, Mary Frances Antunes
..... Havre Central H. S.

DISTRICT V

Connie Savage, Cheryl Sjoblom
..... Butte Girls' Central H. S.
Ronald Coleman, Gary Libecap Park Co. H. S.
Gay Beck, Connie Jacobs Park Co. H. S.
Charles Chumrau, Mary Jo Oreskovich
..... Anaconda H. S.
William Binet, Gene Heiser Holy Rosary H. S.

DISTRICT VI

Gary Peterson, John Stoinoff Missoula Co. H. S.
Ed Measure, Mick Turner Flathead Co. H. S.
Bob Falsom, Terry Fitzpatrick Missoula Co. H. S.
Susan Pennypacker, Meri Vandenberg
..... Sacred Heart H. S.
Barbara Stiers, Colleen Tuxbury
..... Sacred Heart H. S.
Tom Honzel, Tom Topel Loyola H. S.
Mike Brooke, Ben Gluekert Loyola H. S.
Thane Atwood, Dan Brown Victor H. S.

Oral Interpretation of Literature

Contestant High School Title

DISTRICT I

Ed Harris Forsyth H. S.

Robertta Cauthorn Custer Co. H. S.

Phil Larson Forsyth H. S.

DISTRICT II

Lew Williams Billings Sr. H. S.

Frank Williams Billings Sr. H. S.

Leslie Ann Broderson Ryegate H. S.

Warren Dale Ryegate H. S.

DISTRICT III

Nina Paulis St. Mary's of the Mount

Corrine Yardley Great Falls Central H. S.

Raelee Bothwell Great Falls H. S.

Leroy Julien Great Falls Central H. S.

Joan Baucus Great Falls H. S.

DISTRICT IV

Georgia Mack Silence

Eugenia Bates Ballad of Harpweaver
..... Havre Public H. S.

Jackie Cooper The Creation
..... Chinook H. S.

Leonard London Admirals Ghost
..... Havre Central H. S.

Alice Fussel Archie The Cockroach
..... Havre Public H. S.

DISTRICT V

Regina Cullen Bozeman Sr. H. S.

Mary Jayne Page Butte Girls' Central H. S.

Shirley Strong Bozeman Sr. H. S.

Robert Proffitt Park Co. H. S.

Sherri Frisbie Ennis H. S.

DISTRICT VI

Penny McGinnis The Prophet
..... Missoula Co. H. S.

Barbara Johnstone The Highwayman
..... Missoula Co. H. S.

Beverly Boe The Rebirth
..... Flathead Co. H. S.

Vicki Jette My Last Dutchess
..... Sacred Heart Academy

Dorothy O'Connor Not Death, But Love
..... Sacred Heart Academy

Extemporaneous Speaking

Winners for 1960: 1st—Mona Lissa, Billings Sr. H.S. 2nd—Jay Longpre, Loyola H.S., Missoula. 3rd—Lorel Sjoberg, Butte Girls' Central H.S.

Contestant	High School
DISTRICT I	
Bill Krutzfeldt	Custer Co. H. S.
James Olson	Forsyth H. S.
Walter Dean	Forsyth H. S.
DISTRICT II	
Charles Robinson	Billings Sr. H. S.
Steve Melnick	Billings Sr. H. S.
Richard Hager	Sweet Grass Co.
Duane Barr	Edgar H. S.
DISTRICT III	
George Sendon	Great Falls H. S.
Jack Mudd	Great Falls Central H. S.
Glen Kilpatrick	Great Falls H. S.
Neil Ugrin	Great Falls Central H. S.
Carl Richards	Helena H. S.
DISTRICT IV	
George Berg	Chester H. S.
Jim Finch	Havre Central H. S.
Merlin Schaefer	Chester H. S.
Walter Herman	Havre Central H. S.
Carol Stevenson	Havre Public H. S.
DISTRICT V	
Terry Conrad	Bozeman Sr. H. S.
Grey Burno	Beaverhead Co. H. S.
Mark Graesser	Jefferson Co. H. S.
Connie Corbeck	Ennis H. S.
J. C. Weingartner	Butte Boys' Central H. S.
DISTRICT VI	
Mike Dick	Loyola H. S.
Lee Vaage	Missoula Co. H. S.
Linda Taylor	Flathead Co. H. S.
Loreen Craig	Missoula Co. H. S.
Lori Riedlinger	Sacred Heart H. S.

Original Oratory

Winners for 1960: 1st—Bob Casne, Flathead Co. H.S., Kalispell. 2nd—Dennis Nelson, Loyola H.S., Missoula. 3rd—Don Torgenrud, Great Falls Public H.S.

Contestant	High School	Title
DISTRICT I		
Sandee Hansen	Capital Punishment	
	Dawson Co. H. S.	
Jackie McIntosh	Vocations	
	Sidney H. S.	
Joyce Bach	Free—Yet Slaves	
	Savage H. S.	
DISTRICT II		
Ross Buchanan	The Challenge of Change	
	Fromberg H. S.	
Walt Kirkpatrick	Freedoms Crowning Hour	
	Billings Sr. H. S.	
Sherry Whipple		
	Absarokee H. S.	

Mike Alterowitz	Problems of Today vs. Problems of Tomorrow
	Billings Sr. H. S.
Ricky Powell	Who's Next?
	Red Lodge H. S.
DISTRICT III	
Don Torgenrud	The Guardian Society
	Great Falls H. S.
Colleen Thomas	Sincerity
	Great Falls Central H. S.
Seb Ransel	The Constitution and Capitalism
	Great Falls Central H. S.
Ed Butcher	Do Farmers Subsidize the Consumer?
	Fergus Co. H. S.
Patricia Kennedy	The Sleeping American
	St. Leo's H. S.
DISTRICT IV	
Jim Hill	Everything is Fine by Me
	Havre Public H. S.
Carolyn Goodbar	One Went and Digged in the Earth and Hid His Lord's Money
	Chester H. S.
Patty Hess	The Soft Way
	Havre Central H. S.
David Petterson	Social Security
	Cut Bank H. S.
Eleanor Goligoski	Will History Repeat Itself?
	Havre Central H. S.
DISTRICT V	
Doug Skoog	
	Bozeman Sr. H. S.
Ross Boundy	We Must Return to the American Way of Life
	Bozeman Sr. H. S.
Terry Corcoran	
	Communism—Threat to the Free World
	Holy Rosary H. S.
Claudette Breshears	
	Ennis H. S.
Joan Eckley	What Price for Education?
	Jefferson Co. H. S.
DISTRICT VI	
Sam Casne	The Great Farm Dilemma
	Flathead County H. S.
Dennis Nelson	My Generation
	Loyola H. S.
Jeannie Haugen	Capital Punishment
	Flathead Co. H. S.
Kathie Williams	The American Challenge
	Missoula Co. H. S.
Dana Sisson	Our American Education—Is It Serving Its Purpose?
	Sacred Heart H. S.

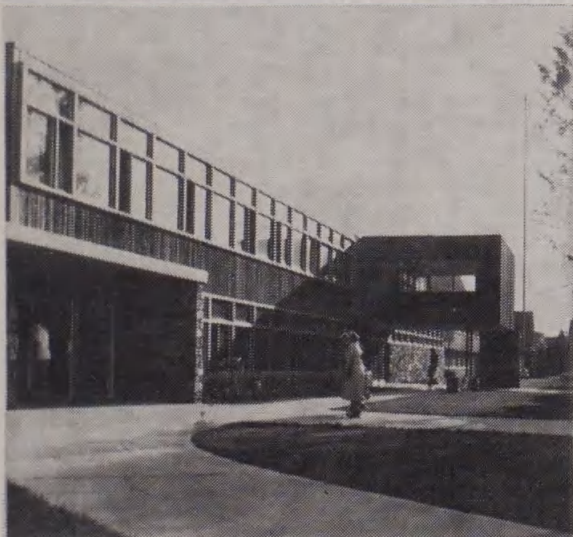
PETERSON DRUG

For Sunglasses, Film and
Other Interscholastic Needs

232 N. Higgins



Home of the Grizzlies, Dornblaser Stadium. Thursday night at the Grizzlies end a month of spring drills with their annual intrasquad football game. Friday afternoon the Interscholastic track meet begins here and ends Saturday. Ten thousand people can sit comfortably here in the shadow of the University's own mountain, Mount Sentinel. High above them is MSU's famous whitewashed "M" and behind them Main Hall.



The Lodge, supply house, headquarters for student government, coffee shop, pantry, social center and a thousand things more to the MSU student. Here, at the east end of University Avenue, can be found the student bookstore, Interscholastic Registration tables, the grill, the student cafeteria and a chance to rest some weary feet with a "Coke" or a cup of coffee.

"Welcome Trackmeet Visitors"

**When Money Matters
It Pays to Think . . .**

FIRST NATIONAL BANK



Home Folks
Since 1873

Member Federal
Deposit Insurance
Corporation

Little Theatre Festival...

Winners in 1960

Winning Plays

"Medea" by Euripides (translation by Robinson Jeffers)
Mr. Francis H. Fitzpatrick, Director; Columbia Falls High School.

"The Twelve Pound Look" by J. M. Barrie; Mr. Bruce Cusker, Director; Conrad High School.

Plays In University Theatre

Best Actor—

Eric Fiedler as Sam Smith in "Shall We Join the Ladies,"
Missoula County High School.

Best Actress—

Carol Woster as Medea in "Medea," Columbia Falls High School.

Best Bit Actor—

Edward J. Thompson as Isaiah Jones in "A Husband for Breakfast," Bozeman High School.

Best Bit Actress—

Lyla Schmautz as Mrs. Levi in "The Matchmaker," Havre Senior High School.

Best Character Actor—

Bill Kirkendall as Robert in "Antic Spring," Billings High School.

Best Character Actress—

Pat Cavanaugh as Katherine in "When Shakespeare's Ladies Meet," Girls' Central High School (Butte).

Plays In Masquer Theatre

Best Actor—

James Baker as Sir Harry Simms in "The Twelve Pound Look," Conrad High School.

Best Actress—

Mary Lou Tudor as Mrs. Popov in "The Boor," Park County High School.

Best Bit Actor—

Robert McLaughlin as the Bad Man in "Man in the Bowler Hat," Fergus County High School.

Best Bit Actress—

Lynne Burnett as Cleopatra in "When Shakespeare's Ladies Meet," Hamilton High School.

Best Character Actor—

Sam Fox as Le Bossu in "Infanta," Ryegate High School.

Best Character Actress—

Jo Ann Hollenberg as Mrs. Moore in "Three on a Bench," Shelby High School.

Winner of Roberts Memorial Scholarship—

Ronald James Stevens, Missoula County High School.

Winner of Award of Merit to a Director—

Mrs. Doris Marshall, Helena High School.

The Little Theater Festival is scheduled for two days this year: Friday, May 19, and Saturday, May 20. Two theaters, both on campus — the University Theater and the Masquer Theater — will be used to accommodate the productions. Plays will run concurrently in both theaters beginning at 8 a.m., Friday, May 19.

One-act plays or cuttings from longer plays, neither exceeding 35 minutes in playing time nor being less than 20 minutes and involving not more than one set of scenery, may be entered. Adjudicators will comment on all Festival entrants. One play from each theater will be selected for presentation at the evening Little Theater Festival program on Saturday, May 20, at 8 p.m. in the University Theater. Plays will be selected by the adjudicators on the basis of imagination, excellence of acting and general quality of production. Identical medals will be awarded in each theater for best actor, best actress, best supporting actor, best supporting actress, best bit actor and best bit actress.

MODERN BEAUTY SCHOOL

Catherine V. Acheson
Owner and Licensed Instructor

Next to Wilma Theater Building

Missoula, Montana

LI 3-7722

SCOOTERS — MOPEDS — MOTORCYCLES

RUSS CYCLE SHOP

SCHWINN AND
RALEIGH BICYCLES

TANDEM
RENTALS

Used Bicycles
Bicycle Accessories

317 Orange St.

LI 9-0014

1961 Little Theater Festival

Schedule of Performances

Friday and Saturday, May 19 and 20, 1961

MASQUER THEATER

Mr. Firman H. Brown, Jr.
Chairman, Dept. of Drama, Montana
State University, Adjudicator

UNIVERSITY THEATER

Mr. Donald R. Henry,
Department of Speech and Drama,
Oregon State College, Corvallis, Oregon,
Adjudicator.

FRIDAY

- 8:30 a.m.—Girls' Central, Butte, "The Red Key," Sister Mary Hilaria, director.
- 9:30 a.m.—Havre, "A Marriage Proposal," Miss Betty Browne, director.
- 10:30 a.m.—Shelby, "The Flattering Word," Harvey Palmer, director.
- 11:30 a.m.—Red Lodge, "The White Lawn," Fred R. Woeppel, director.
- 1:30 p.m.—Columbia Falls, "The Boor," Francis Fitzpatrick, director.
- 2:30 p.m.—Powell County, Deer Lodge, "The Wall," Mrs. Isobel Eaton, director.
- 3:30 p.m.—Sweetgrass County, Big Timber, "Sister's McIntosh," Mervin A. Wertz, director.
- 8:00 p.m.—**MEETING TO DISCUSS MONTANA HIGH SCHOOL THEATER ASSOCIATION** (Masquer Theater)

SATURDAY

- 8:00 a.m.—Victor, "The Storm," Mrs. Eva Campbell, director.
- 9:00 a.m.—Fromberg, "The Valiant," Mrs. Jean Higham, director.
- 10:00 a.m.—**MEETING TO DISCUSS MONTANA HIGH SCHOOL THEATER ASSOCIATION**
- 12:30 p.m.—Sacred Heart, Missoula, "Mary of Scotland," Sister Jeanine, director.
- 1:30 p.m.—Flathead County, Kalispell, "Moon-ey's Kid Don't Cry," R. D. Chapman, director.
- 2:30 p.m.—Lincoln County, Eureka, "A Pair of Lunatics," David Swanberg, director.

FRIDAY

- 8:00 a.m.—Anaconda, "Mooncalf Mugford," John R. Doohan, director.
- 9:00 a.m.—Bozeman, "The Old Lady Shows Her Medals," Mrs. Barbara Watts, director.
- 10:00 a.m.—Missoula County, "Red Peppers," Bruce Cusker, director.
- 11:00 a.m.—Beaverhead County, Dillon, "The Hour of Truth," J. R. Michalson, director.
- 1:00 p.m.—Hamilton, "Recognition Scene from Anastasia," Miss Sally Bohac, director.
- 2:00 p.m.—Conrad, "The Finger of God," D. W. Olson, director.
- 3:00 p.m.—Havre Central, "Diary of Anne Frank," Sister Teresina, director.
- 4:00 p.m.—Fergus County, "High Window," E. L. Dobkoski, director.

SATURDAY

- 8:00 a.m.—Great Falls Central, "Long Voyage Home," Fr. Harvey D. Livix, director.
- 9:00 a.m.—Libby, "Ugly Duckling," Mrs. Oglä Erickson, director.
- 10:00 a.m.—**MEETING TO DISCUSS MONTANA HIGH SCHOOL THEATER ASSOCIATION** (Masquer Theater)
- 1:00 p.m.—Great Falls, "Junkyard," C. W. Lund, director.
- 2:00 p.m.—Billings, "Thirty Minutes in a Street," Lloyd Mickelson, director.
- 3:00 p.m.—Loyola, Missoula, "Prometheus Bound," Mr. Robert J. Willis, S. J., director.
- 4:00 p.m.—**MISSOULA COUNTY DEMONSTRATION PLAY, "ALL FOR THE LOVE OF GOLDFISH,"** Judy Burns, Student director.

Golf and Tennis Tournament

1960 Girls' Interscholastic Golf Champion: Joan Dixon, Missoula.

1960 Boys' Interscholastic Golf Champion: Jim Roberts, Billings.

1960 Boys' Interscholastic Golf Team Champion: Whitefish.

1960 Girls' Interscholastic Tennis Champion: Singles, Maureen Hall, Billings Central; Doubles, Mary Lou Hartsell and Marilyn Brown, Missoula County High School.

1960 Boys' Interscholastic Tennis Champion: Singles, Dick Hurd, Great Falls High School; Doubles, Randy Jacobs and Don Huffman, Missoula County High School.

GIRLS' GOLF

ANACONDA

Leistik, S.
Thompson, P.

BILLINGS SENIOR H. S.

Myhre, Margaret
Myhre, Marilyn
Potentler, J.

BOZEMAN SR. H. S.

Hanshaw, S.
Mougey, M.

FLATHEAD COUNTY H. S.

Denny, D.
Gillette, G.
Halvorson, K.
Rognlien, M.
Pierce, N.

GIRLS' CENTRAL, BUTTE

Good, C.
Madden, M.
Madden, S.
McBride, H.
Roberts, J.

GLASGOW

Oswood, B.
Pattison, K.

MISSOULA COUNTY H. S.

Dixon, J.
Searles, D.

BOYS' GOLF

ANACONDA

Devich, D.
Devich, Jerry
Devich, Jim
Stipech, J.

BILLINGS CENTRAL

Manning, M.
McIntosh, B.
Ruegamer, B.

BILLINGS SENIOR H. S.

Fenter, W.
Jarrett, D.
Jerhoff, B.
Roberts, J.
Rogers, M.

BILLINGS WEST H. S.

Nelson, D.

BOZEMAN SR. H. S.

Bodley, D.
Bodley, S.
Kippen, K.
McKean, D.
Wantolok, J.

BOYS' CENTRAL, BUTTE

Armstrong, P.
Hagenson, M.
Harrington, R.
Mihelich, D.
Penny, P.
Penny, S.
Weingartner, J.

BUTTE PUBLIC H. S.

Buckley, L.
Droubay, G.
Edwards, P.
Fasso, L.
Kriskovich, J.
LaBranche, G.
Thompson, B.
Thomson, H.
Warren, J.

CUSTER COUNTY H. S.

McLain, B.
Moger, M.
Severson, B.

FLATHEAD COUNTY H. S.

Clark, R.
Jones, T.
LaRue, J.
Milaney, T.
Rose, M.
Schlecht, R.
Simpson, L.
Warden, D.

GLASGOW

Crowley, J.

GREAT FALLS H. S.

Barber, C.
Blewitt, Z.
Dwight, P.
Hodges, T.
McIntyre, B.
Perry, D.
Stevens, S.
Youngdale, D.

HAVRE CENTRAL

Hess, P.
Kuka, P.
Seelinger, J.

HAMILTON

Blahnik, B.
Carls, J.
Dowling, J.
Robinson, D.
Rothlisberger, D.

HELENA SENIOR H. S.

Dion, B.
Finley, D.
Kuntz, T.
Moore, J.
Thompson, D.
Wright, B.

HYSHAM

Mysse, A.

LOYOLA H. S., MISSOULA

Austin, J.
Harr, B.
Hogan, S.
Pilcher, R.
Piquette, J.
Spencer, R.

MISSOULA COUNTY H. S.

Brown, J.
Chumrau, M.
Denton, B.
Lindsay, R.
Olson, M.
Peterson, K.
Ulyatt, J.

POLSON

Black, F.
Fisher, J.
Johnson, D.
Honsman, R.

RED LODGE

Simmons, L.

SACRED HEART H. S., MILES CITY

Stallard, B.

WHITEFISH

Beckedahl, B.
Collins, J.
Garrity, G.
Johnson, D.
Peschel, Harland
Peschel, Herb.
Sheflee, B.
Spehrs, R.
Stocking, G.

GREAT FALLS CENTRAL

Friden, T.
Kralich, E.

BOYS' TENNIS—Singles

BILLINGS SENIOR H. S. Anisgard, A. Fitzgerald, B. Huet, L. Lawson, K. Pratt, R.	CORVALLIS Bay, C. Handley, L. Hopkins, M. Olson, S.	FLATHEAD COUNTY H. S. Bartsch, J. Vidal, J.	HELENA SENIOR H. S. Buswell, R. Melloy, T.	GREAT FALLS CENTRAL McGee, B. Nixon, J.
BOZEMAN SR. H. S. Franks, B. Lehrkind, B.	CUSTER COUNTY H. S. Brown, J. Gudmundson, G. Hill, F. Killworth, M. Moger, M. Padilla, J. Thompson, P. Velasco, F.	GLASGOW Beam, J. Loomer, D.	MISSOULA COUNTY H. S. Fox, J. Hoffman, D. Jacobs, R. Murphy, J. Nay, N.	DAWSON COUNTY H. S. Ewing, W. Hendrickson, D.
DARBY Moody, D.		GREAT FALLS H. S. Chamberline, B. Hurd, D.	SHELBY Baldwin, M. Borge, M. Lunda, H. Severson, B.	VICTOR Garner, V. Jaques, D. Williamson, W.
BUTTE PUBLIC H. S. Drew, B.		HAMILTON Champlin, M. Collins, P. Dayton, D. Hughes, J. Rasmussen, T.		

BOYS' TENNIS—Doubles

BILLINGS SENIOR H. S. Anisgard, A. Fitzgerald, B. Hurt, L. Lavson, K. Pratt, R.	CUSTER COUNTY H. S. Brown, J. Gudmundson, G. Hill, F. Killworth, M. Moger, M. Padilla, J. Thompson, P. Velasco, F.	GLASGOW Beam, J. Loomer, D.	HELENA SENIOR H. S. Buswell, R. Melloy, T.	GREAT FALLS CENTRAL McGee, B. Nixon, J.
BOZEMAN SR. H. S. Cathey, G. Kelly, M. Stroh, R.	FLATHEAD CO. H. S. Ottenbrite, D. Price, D.	GREAT FALLS H. S. Chamberlin, B. Hurd, D.	MISSOULA COUNTY H. S. Fox, J. Hoffman, D. Jacobs, R. Murphy, J. Nay, N.	DAWSON COUNTY H.S. Ewing, W. Hendrickson, D.
CORVALLIS Bay, C. Handley, L. Hopkins, M. Olsen, S.		HAMILTON Champlin, M. Collins, P. Dayton, D. Hughes, J. Rasmussen, T.	SHELBY Baldwin, M. Borge, M. Lunda, H. Severson, B.	VICTOR Garner, V. Jaques, D. Williamson, W.

GIRLS' TENNIS—Doubles

BILLINGS CENTRAL Schiltz, K. Vam Osten, P.	CORVALLIS Bowden, D. Covert, J. Marsh, M. Sager, D.	GIRLS' CENTRAL, BUTTE Good, C. Lingley, D. Madden, S. Muster, J. O'Keefe, C. Pesanti, L. Ruchwardt, M.	HELENA Huffman, J. Reynolds, F. Rudio, C. Touhy, J.	SACRED HEART ACADEMY, MISSOULA Dussault, A. Honzel, G. McCoy, J. Schaff, K. Schulz, S. Schriver, J.
BILLINGS SENIOR H. S. Maurais, Georgia Maurais, Georgine	CUSTER CO. H. S. Bergerson, C. Bowman, K. Hansen, E. Jones, D. Kelly, K. Lockie, J.	GREAT FALLS CENTRAL Schlimgen, J. Zabrocki, E.	MISSOULA CO. H. S. Bergstrom, S. Brown, M. Bue, J. DeMers, K. Raffety, S. Sayer, J.	VICTOR Davenport, R. Langton, L. Rimmereid, J.
BILLINGS WEST Borgstede, B. Helken, K.		HAMILTON Enebo, J. Owens, S.		
BOZEMAN SR. H. S. Dyk, J. Green, P.				
BUTTE PUBLIC H. S. LaBranche, D. Miller, C.				

GIRLS' TENNIS—Singles

BILLINGS CENTRAL Ferro, N. Northridge, S. Vam Osten, P. Schiltz, K.	CORVALLIS Bowden, D. Covert, J. Marsh, M. Sager, D.	FLATHEAD COUNTY H. S. Ramsey, M. Shotwell, S.	GREAT FALLS H. S. Wolmsley, D.	SACRED HEART ACADEMY Dussault, A. Honzel, G. McCoy, J. Schaff, K. Schulz, S. Schriver, J.
BILLINGS SENIOR H. S. Dutchee, A. McMillian, K.	CUSTER COUNTY H. S. Bergerson, C. Bowman, K. Hansen, E. Jones, D. Kelly, K. Lockie, J.	GREAT FALLS CENTRAL Fasbender, P. Nardinger, S.	HAMILTON Rose, P. Vadheim, H. McKillop, N.	VICTOR Davenport, R. Langton, L. Rimmereid, J.
BOZEMAN SR. H. S. Bryant, S. Cass, B.		GIRLS' CENTRAL, BUTTE Good, C. Lingley, D. Madden, S. Muster, J. O'Keefe, C. Pesanti, L. Ruchwardt, M.	HELENA SENIOR H. S. Ruffman, J. Reynolds, F. Rudio, C. Touhy, J.	
DARBY Bringen, C. Bringen, S. Skaw, R.		GLASGOW King, M.	MISSOULA COUNTY H. S. Bergstrom, S. Brown, M. Bue, J. DeMers, K. Raffety, S. Sayer, J.	
BUTTE PUBLIC H. S. Keller, K.				

Program of Track and Field Events

Unless specifically indicated otherwise in the program, preliminary races shall be run in the following order: Class C, B, A and AA. Where no more than ten contestants from any class are entered in a running event, no trials or preliminary heats shall be run.

FRIDAY, MAY 19, 1:10 P.M.

Parade of Athletes

Trials, 100-yard dash—Classes B and C

Trials, 120-yard high hurdles—Classes B and C

Trials, 440-yard run—Classes B and C

Final, Mile Run—Classes B and C

Trials, 220-yard dash—Classes B and C

Final, 880-yard run—Classes AA and A

Trials, 180-yard low hurdles—Classes B and C

Trials, 880-yard relays—Classes B and C

Finals in the Class B and Class C pole vault and in the Class AA and Class A high jump will be held concurrently with the running events.

Trials in the following field events will be held with participants competing in flights. Class B and Class C discus throw (on practice field north of Dornblaser Field). Class AA and Class A shot put, Class B and Class C javelin throw and Class AA and Class A broadjump (all on Dornblaser field), followed by Class B and Class C shotput, Class AA and Class A javelin throw, Class B and Class C broadjump (all on Dornblaser Field), and Class AA and Class A discus throw (on practice field north of Dornblaser Field).

SATURDAY, MAY 20, 1:00 P.M.

Finals, 100-yard dash

Finals, 120-yard high hurdles

Finals, 440-yard run

Final, Mile run, Class AA

Final, Mile run, Class A

Final, 880-yard run, Class B

Final, 880-yard run, Class C

Finals, 180-yard low hurdles

Finals, 880-yard relays. (All relays will be run in lanes with staggered starts and on comparative time basis if there are more than five teams in any class).

Finals of the Class AA and Class A pole vault and Class B and Class C high jump will be held concurrently with the running events.

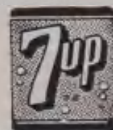
Finals of the weight throwing events and the broad-jump will be as follows: Class AA broad jump, Class A shot put, and Class B and Class C discus throw; followed by Class AA shot put, Class A discus throw, and Class B and Class C broad jump; followed by Class AA discus throw, Class A broad jump, and Class B and Class C shot put; followed in order by the Class B and Class C, Class A, and Class AA javelin throw.

The Committee reserves the right to qualify more contestants than the above calls for, and to eliminate any semi-final found to be unnecessary.

All 440, 880 and mile races will be started at the head of the straightaway (thus eliminating the first turn.)

"Time Out" Means
"Refreshments"

Coca-Cola



Nesbitts
California
Orange

Coca-Cola Bottling Co.
of Missoula

Points in Track and Field Meet, 1960

CLASS AA

Helena	45	Great Falls	17 6/7
Billings	31 1/3	Missoula	17
Park	30 5/7	Gallatin	11 6/7
Butte Public	24 6/7	Butte Central	11 1/3
Flathead	24	Anaconda	9 4/21

Anaconda Central ..	4	Eureka	2
Forsyth	3	Lodge Grass	1
Stevensville	3	Plentywood	1
Sunburst	3	Scobey	1
Cut Bank	2	Malta	3/4
Poplar	2	Powell Co.	3/4
Wolf Point	2		

CLASS A

Hardin	60	Sidney	11
Custer Co.	49	Great Falls Central..	7
Dawson	38	Glasgow	4 1/2
Billings Central	28	Fergus Co.	0
Laurel	24 1/2	Havre	0

CLASS B

Loyola (Missoula) ..	33 1/4	Mission	10
Libby	18 3/4	Shelby	9
Whitefish	16	Absarokee	8
Choteau	15 1/2	Beaverhead	8
Fairfield	14	Fairview	7
Red Lodge	14	Helena Cathedral ...	6 3/4
Hamilton	13 3/4	Ronan	6
Poison	13 3/4	Harlowton	4 3/4

CLASS C

Plains	30	Savage	4
Corvallis	22	Superior	4
Troy	17	Victor	4
Holy Rosary	14	Belgrade	3 1/5
Townsend	14	Cascade	3 1/5
Augusta	12	Wilsall	3 1/5
Colstrip	10	Chester	3
Sheridan	10	Darby	3
Terry	8	Inverness	3
Simms	7	Power	3
Broadview	6 1/5	Arlee	2 1/2
Denton	6 1/5	Hot Springs	2 1/2
White Sulphur	6	Centerville	2
Big Timber	6	Custer	2
Ennis	6	St. Regis	2
Edgar	4	Three Forks	1

Best Individual Performers, 1960

Class AA: Mike Huggins, Flathead; Larry Questad, Park, 16.

Class A: Tate, Hardin, 15½.

Class B: Yeager, Choteau, 12.

Class C: Ken Grazier, Plains, 16½.

Interscholastic meet records are the best marks established in any event in the meet regardless of whether established by Class AA, A, B, or C school contestants.

Montana Interscholastic Track and Field Records

Event	Record	Holder	Year
100 yard dash	9.8 sec.	R. O'Malley, Butte	1933
220 yard dash	21.6 sec.	R. O'Malley, Butte	1933
440 yard dash	49.9 sec.	F. Damaskos, Missoula	1957
880 yard dash	1:58.7	R. Merwin, Missoula	1956
Mile run	4:27.6	J. Kittell, Missoula	1945
High hurdles	14.8 sec.	D. McAuliffe, Butte	1938
180 yard low hurdles	19.6 sec.	C. Orr, Missoula	1953
Pole vault	12 ft. 10 in.	W. Custer, Missoula	1930
Javelin throw	203 ft. 8¾ in.	Ken Christison, Flathead	1960
Shot put	56 ft. 6¾ in.	Jerry Fitzsimmons, Butte	1960
Discus throw	165 ft.	Nate Edington, Butte	1960
High jump	6 ft. 6½ in.	Mike Huggins, Flathead	1960
Broad jump	22 ft. 8½ in.	K. Nelson, Missoula	1955
Half mile relay	1:31.1	(Boone, Lewis, Danielson, Drinville), Missoula	1958

Welcome Visitors! We hope you enjoy the meet

**MOUNTAIN STATES TELEPHONE
AND TELEGRAPH CO.**

CLASS AA

ANACONDA

1. Brown, A.
2. Crum
3. Cutter
4. Estes, W.
5. Jackson, M.
6. Lindstrom
7. McLemore
8. White, T.

BILLINGS

9. Atkinson, J.
10. Beaton, J.
11. Bresnhan, J.
12. Clavadotscher, C.
13. Fry, B.
14. Garriss, L.
15. Greene, D.
16. Hendrickson, O.
17. Husband, W.
18. Hunkins, R.
19. Hutton, R.
20. Lockie, D.
21. Montague, D.
22. Nelson
23. Otto, J.
24. Remington, W.
25. Scott
26. Shaver, J.
27. Stark
28. Wegmet, J.
29. Whittmer, W.

BILLINGS WEST

30. Hill, W.
31. Lineberger
32. Rowe, A.
33. Sasich, L.

BUTTE CENTRAL

34. O'Leary, A.
35. O'Neil, D.
36. Roach, B.
37. Sutey, J.

BUTTE PUBLIC

38. Allen, G.
39. Eaton
40. Johnson, R.
41. Johnstone, M.
42. Laramie
43. Miller
44. Peterson, C.
45. Rae, D.
46. Saam, F.
47. Sopko, F.
48. Stadler, S.
49. Thorton, R.

FLATHEAD COUNTY

50. Bain, F.
51. Hanson
52. Hoyem, D.
53. Maroney, D.
54. Quande

GALLATIN COUNTY

55. Parker

GREAT FALLS

56. Davis, G.
57. Hill, R.
58. Jackson, D.
59. Jones, R.
60. Kruger, W.
61. Kuntz, J.
62. Lund, B.
63. McIntosh, J.
64. Moran, K.
65. Neil, R.
66. Schelenske, R.
67. Shafer, F.
68. Shelly, R.
69. Silberman, D.
70. Sowers, R.

HELENA

71. Coltrane, R.
72. Coltrane, G.
73. Dove, C.
74. Eathorn, G.
75. James, B.
76. Kovick, R.
77. Nichwander
78. Nicolay, N.
79. Smith, W.
80. Tobal, D.
81. Tobal, R.
82. Ursich
83. Vollerton, R.
84. Weiss

MISSOULA COUNTY

85. Allen, P.
86. Anderson, P.
87. Benson, P.
88. Campbell, D.
89. DeMers, H.
90. Denison, B.
91. Gludt, P.
92. Hangas, D.
93. Meath, D.
94. Meidinger, C.
95. McInstry, S.
96. Putnam, L.
97. Seim, D.
98. Smith, G.
99. Steinberg, D.
100. Tabish, R.
101. Thibodeau, B.
102. Townsend, D.
103. Ward, B.

PARK COUNTY

104. Downer
105. Questad, L.
106. Ricci, F.
107. Spencer
108. Sumner, J.

CLASS A

BILLINGS CENTRAL

109. Birror, P.
110. Boyle, M.
111. Frigge
112. Kloster, O. G.
113. Malmstrom, J.
114. Mathern, B.
115. Murhpy, M.
116. Staid, A.
117. Turcotte, S.
118. Webber, P.

CUSTER COUNTY

119. Albrecht
120. Coombs, B.
121. Coombs, T.
122. Domagala
123. Dundas
124. Gordon, O.
125. James
126. Oddy
127. Richardson
128. Ross
129. South, R.
130. Stanley
131. Wendelberg, B.

DAWSON COUNTY

132. Green, B.
133. Farrell, B.
134. Masugh
135. Palen
136. Sundling, D.
137. Taylor, E.

FERGUS COUNTY

138. Brown
139. Doan, D.
140. Farrer
141. Kelly
142. Rafter
143. Van Henning
144. Woody

GLASGOW

145. Bjorklund
146. Bracken
147. Crowley
148. Johnson
149. Landes, Bob
150. Lersbach, W.

151. McMorrell
152. Mhyre
153. Olson
154. Popin
155. Reddick
156. Taylor

GREAT FALLS CENTRAL

157. Benny, W.
158. Bulger, C.
159. Dean, W.
160. Gilligan, J.
161. Hefernan, P.
162. Heisler, T.
163. Lloyd, J.
164. McFadden, D.
165. Miller, L.
166. Naughton
167. Schall, K.
168. Wolf

HARDIN

169. Beary
170. Fox
171. Loague

172. Marks
173. Tate, R.
174. Three Irons, D.
175. Zeiler

HAVRE

176. Compton
177. Gorseth
178. Havskjold, G.

LAUREL

179. Armstrong, J.
180. Foley, D.
181. Foster
182. McManus, M.
183. Moline
184. Neilson
185. Peterson, J.
186. Weis, D.

SIDNEY

187. Beagle
188. Bentson, R.
189. Hartmann
190. Harper, R.
191. Hueth

CLASS B

ABSAROOKEE

- 192. Bolin, M.
- 193. Gerhardt, R.
- 194. Lesnick, T.
- 195. Palass, W.
- 196. Pederson, L.
- 197. Pelton, M.
- 198. Smith, N.
- 199. Trees, D.

ANACONDA CENTRAL

- 200. James, D.
- 201. James, J.
- 202. Molendyke, W.
- 203. Morris, T.
- 204. Sullivan, R.

BAKER

- 205. Cody, B.
- 206. Joyce, J.
- 207. Nichols, J.
- 208. Schweigert, K.
- 209. Simmons, B.

BEAVERHEAD COUNTY

- 210. Atkins, M.
- 211. Buck, J.
- 212. Hill, T.
- 213. Young, J.

BIG TIMBER

- 214. Adams, A.
- 215. Beley, J.
- 216. Clark, R.
- 217. Stephens, M.

BROWNING

- 218. Rattler, P.
- 219. Weasa, A.

CHINOOK

- 220. Chapman, M.
- 221. Dickson, B.
- 222. Kimball, B.
- 223. Monson, V.
- 224. Peterson, T.
- 225. Sapute, R.
- 226. Sargent, G.
- 227. Tillemann, D.
- 228. Upshaw, J.

CHOTEAU

- 229. Asay, J.
- 230. Carlson, W.
- 231. Connole, J.
- 232. Dunckel, G.
- 233. Gollehon, R.
- 234. Hansen, D.
- 235. Huffman, J.
- 236. Jorame, F.
- 237. Kelly, T.
- 238. Moon, G.
- 239. Moore, D.

- 240. Wedum, N.
- 241. Wilson, R.
- 242. Yeager, L.
- 243. Yeager, R.

CIRCLE

- 244. Beason, B.
- 245. Hart, L.
- 246. Lela, C.
- 247. Moline, C.
- 248. Moline, D.
- 249. Moos, D.
- 250. Penn, B.
- 251. Rosseland, M.
- 252. Walton, J.

COLUMBIA FALLS

- 253. Darling, L.
- 254. Koppang, R.
- 255. Ravan, J.
- 256. Ryan, P.
- 257. Voxburgh, M.
- 258. Wright, H.

COLUMBUS

- 259. Johnson, J.
- 260. McClellan, G.
- 261. Saunders, R.

CONRAD

- 262. Bleeker, B.
- 263. Meuli, D.
- 264. Robinson, G.
- 265. Scott, D.
- 266. Surdoch, P.

CUT BANK

- 267. Boyle, T.
- 268. Huffman, B.
- 269. King, J.
- 270. Loudernilk, R.
- 271. Luedtke, R.
- 272. McGlothlin, L.
- 273. Waggoner, J.
- 274. Waller, D.

EUREKA

- 275. Clarke, C.
- 276. Waydemyer

FAIRFIELD

- 277. Ballantyne, N.
- 278. Blossom, J.
- 279. Graf, H.
- 280. Harts, C.
- 281. Klinker, M.
- 282. Klinker, N.
- 283. Simkins, R.
- 284. Udin, A.
- 285. Young, K.

FAIRVIEW

- 286. Arpin, L.
- 287. Bauman, T.
- 288. Noteboom, H.
- 289. Pasche, J.
- 290. Vickers, V.

FORSYTH

- 291. Friez, R.
- 292. Harken, G.
- 293. Hicha, S.
- 294. Nile, J.
- 295. Ostrom, J.
- 296. Phillips, J.
- 297. Rolston, A.
- 298. Swanson, W.

FORT BENTON

- 299. Fry, D.
- 300. Harmon, D.
- 301. Nottingham, D.
- 302. Rowe, G.
- 303. Rudin, J.
- 304. Silvius, B.

HAMILTON

- 305. Applebury, T.
- 306. Bunger, B.
- 307. Elmore, D.
- 308. Fuiney, G.
- 309. Hettrich, W.
- 310. Langely, W.
- 311. Lovely, B.
- 312. Marvin, H.
- 313. Meuchel, J.
- 314. Petet, R.
- 315. Spannuth, G.
- 316. Scott, B.
- 317. Tidball, J.
- 318. Wall, B.
- 319. Wall, E.
- 320. Wanderer, S.

HARLEM

- 321. Hawley, G.
- 322. Parks, J.
- 323. Pipe, R.
- 324. Warwick, J.

HARLOWTON

- 325. Blaquiery, D.
- 326. Egebakken, C.
- 327. Hiner, B.
- 328. Neighbors, C.

HELENA CATHEDRAL

- 329. Darcy, W.
- 330. McGinely, S.

HUNTLEY PROJECT

- 331. Deirenfield, D.
- 332. Hofmann, J.
- 333. Kramer, E.

LIBBY

- 334. Childs, A.
- 335. Gehring, E.
- 336. Hill, D.
- 337. Starry, J.
- 338. Stephens, W.
- 339. Tushaus, J.
- 340. Vaughn, B.
- 341. Vinion, M.

LODGE GRASS

- 342. Barnes, D.
- 343. Caddel, S.
- 344. Endicott, J.
- 345. Jefferson, B.
- 346. Not Afraid, W.
- 347. Schenderline, D.

LOYOLA (Missoula)

- 348. Ballas, J.
- 349. Bedard, B.
- 350. Brooke, Mike
- 351. Brooke, Pat
- 352. Burns, S.
- 353. Hogan, S.
- 354. Honzel, T.
- 355. Jobe, J.
- 356. LeDeau, G.
- 357. Marinan, T.
- 358. Pilcher, R.
- 359. Plummer, R.
- 360. Tripp, G.
- 361. Wemple, J.
- 362. Williams, S.
- 363. Zahn, T.

MALTA

- 364. Adam, C.
- 365. Black, S.
- 366. Louchs, H.
- 367. Lumsden, R.
- 368. Malloy, D.
- 369. McEwan, B.
- 370. Nicholson, J.
- 371. Robinsin, M.
- 372. Saputo, R.
- 373. Spencer, V.
- 374. Trambly, A.
- 375. Weiderich, K.
- 376. Weiderich, R.

MISSION

- 377. Blackman, B.
- 378. Currie
- 379. Hershman
- 380. HcClure, R.
- 381. Shelton, J.

NASHUA

- 382. Lauckner, D.
- 383. O'Conner, P.
- 384. Stearns, S.

PLENTYWOOD

- 385. Corner, F.
- 386. Feeney, T.
- 387. Overby, R.

CLASS B—(continued)

POLSON

- 388. Anderson, R.
- 389. Berthelote, B.
- 390. Dwello, B.
- 391. Farrell, T.
- 392. Holmes, M.
- 393. Holmes, P.
- 394. Miller, M.
- 395. Normandeau, R.
- 396. Patterson, B.
- 397. Pitts, E.
- 398. Stark, M.
- 399. Sturm, W.
- 400. Thomas, M.
- 401. White, J.

POPLAR

- 641. Field, B.
- 402. Paulson, W.
- 403. Prescott

POWELL COUNTY

- 404. Ahl, F.
- 405. Beck, R.
- 406. Farquhar, J.
- 407. Hamblin, B.
- 408. Krutar, J.
- 409. Thompson, R.

RED LODGE

- 410. Alberi, M.
- 411. Baratta, D.
- 412. Brophy, R.
- 413. Brown, D.
- 414. Jovanovich, G.
- 415. Lodge, J.
- 416. Persha, M.
- 417. Rae, B.
- 418. Ridel, R.

RONAN

- 419. Cheff, R.
- 420. Salomon, T.
- 421. White, F.

SCOBEY

- 422. Vies, T.

SHELBY

- 423. Barger, L.
- 424. Brady, K.
- 425. Knickerbocher, D.
- 426. Neilson, J.
- 427. Nevin, C.
- 428. O'Hara, J.

- 429. Seeley, R.
- 430. Underdahl, G.

SUNBURST

- 431. Mauritsen, P.

THOMPSON FALLS

- 432. Campbell
- 433. Duffield, J.
- 434. Dufresne, D.
- 435. Lyght, D.
- 436. West, F.
- 437. Wiegand, J.

VALIER

- 438. Kuka, B.

WHITEFISH

- 439. Bunner, R.
- 440. Lodinoff
- 441. Osborne, G.
- 442. Pettis, J.
- 443. Stolte, C.
- 444. Vance, D.

WOLF POINT

- 445. Ahlberg, A.
- 446. Colgan, J.
- 447. Ediger, R.
- 448. Ferdina, R.
- 449. Hoberg, R.
- 450. Johnson, H.
- 451. Loendorf, G.
- 452. Loendorf, T.
- 453. Nelson, G.
- 454. Page, C.
- 455. Parsley, B.
- 456. Scott, F.
- 457. Shumway, G.
- 458. Shumway, R.
- 459. Thompson, D.
- 460. Wright, R.

CLASS C

ARLEE

- 461. Charlo
- 462. Park

AUGUSTA

- 463. Barrett, E.
- 464. Brunett
- 465. Nett, T.

BAINVILLE

- 466. Hanson, R.
- 467. LaCounte, L.

BELFRY

- 468. Lewis, D.

BELGRADE

- 469. Moore, L.
- 470. Otheim, R.
- 471. Wegan, D.

BELT

- 472. Brunrud, C.
- 473. Hoyer, J.
- 474. Leland, R.

BIG SANDY

- 475. Kulbeck, N.
- 476. McNeil, D.

BOULDER

- 477. Buckles
- 478. Greasser
- 479. Timmer

BRIDGER

- 480. Boyer, G.
- 481. Candlin, L.
- 482. Schwend, J.

BROADVIEW

- 483. Badgett, D.
- 484. Dreese, C.

BROCKTON

- 485. Bighorn, L.

CASCADE

- 486. Baker, D.
- 487. Obrecht, W.

CENTERVILLE

- 488. Erickson, D.
- 489. Pepos, M.
- 490. Williams, D.

CHARLO

- 491. Marsh
- 492. Rogers

CHESTER

- 493. Berg, G.
- 494. Green, E.
- 495. Gillin, L.
- 496. Loughton, L.
- 497. Nordstrom, G.
- 498. Stark, J.
- 499. Ward, T.

COLSTRIP

- 500. Harris, R.

CORVALLIS

- 501. Engler
- 502. Filcher
- 503. Hull
- 504. Mickens
- 505. Patterson
- 506. Wolfinbarger

CULBERTSON

- 507. Baxter, R.
- 508. Borge, D.
- 509. Olson, L.
- 510. Luft, R.
- 511. McKenney
- 512. Moore, R.

CUSTER

- 513. Kempf

DARBY

- 514. Conner
- 515. Savachka

DENTON

- 516. Ceerle, L.
- 517. Scott, D.
- 518. Sparks, C.

DIXON

- 519. Clairmont
- 520. Schmauch
- 521. Smith

CLASS C—(continued)

DUTTON

- 522. Becker, C.
- 523. Odden, M.
- 524. Schultz, W.
- 525. Thorne, L.
- 526. Trebosch, D.

EDGAR

- 527. Kelly, R.
- 528. Krug, G.

EKALAKA

- 530. Blair, T.
- 531. Lambert, B.
- 532. Powell

ENNIS

- 533. Hayden
- 534. Luech

FROMBERG

- 535. Willis, R.

GRANITE COUNTY

- 536. Winninghoff

GRASS RANGE

- 537. Jackson, G.
- 538. Wyman, W.

HOGELAND

- 539. Jackson, G.
- 540. Snider, R.

HOLY ROSARY

- 541. Montforton, T.

HOT SPRINGS

- 542. Carr
- 543. Franklin

HYSHAM

- 544. Myase, .

INVERNESS

- 545. May, E.

JOLIET

- 546. Doom, W.
- 547. Jarussi, L.
- 548. Jensen, J.

JUDITH GAP

- 549. McIntyre, V.
- 550. Knight, J.
- 551. Nelson, A.

MANHATTAN

- 552. Dornboss, D.

MEDICINE LAKE

- 553. Eamon
- 554. Heggum
- 555. Henke
- 556. Madsen

MOORE

- 557. Nesson, G.

OUTLOOK

- 558. Garrick, C.
- 559. West, D.

PLAINS

- 560. French
- 561. Pilgeram
- 562. Shields

POWER

- 563. Keel, G.
- 564. Moran, T.
- 565. Williams, D.
- 566. Woodhouse, B.

RAPELJE

- 567. Dilworth, D.
- 568. Herzog, D.

ROSEBUD

- 569. Biery, C.
- 570. Deitchler, E.
- 571. Polish, J.

ROY

- 572. Jordon, L.

SACRED HEART (Miles City)

- 573. Bengsky
- 574. Minkoff
- 575. Munsell
- 576. Schaefer

SAVAGE

- 577. Hagler, L.
- 578. Hamburg, R.
- 579. Price, D.
- 580. Vallejo, V.

SHEPHARD

- 581. McCartney, D.
- 582. Peil, C.

SHERIDAN

- 583. Bock
- 584. Douglas
- 585. Marsh
- 586. Pack
- 587. Sagunsky
- 588. Wright

SIMMS

- 589. Henschell, R.
- 590. Loomis, J.
- 591. Nash, H.
- 592. Walt, K.

STANFORD

- 593. Dubois, D.
- 594. Haker, K.

STATE SCHOOL

- 595. Baylor
- 596. Chamberlain
- 597. Doran
- 598. Hanley
- 599. Mooser
- 600. Wilkins, G.

SUPERIOR

- 601. Walle
- 602. Wicktrom

ST. LABRE

- 603. Fotte, T.
- 604. Rowland, T.

ST. LEO'S

- 605. McConnell, D.

TERRY

- 606. Buckingham, D.
- 607. Clarke, R.
- 608. Freiboth, L.
- 609. Haidle
- 610. Hickman, D.
- 611. Jasperson, D.

- 612. Rittal, J.
- 613. Strobel, D.
- 614. Tibbets, W.
- 615. Wahl

THREE FORKS

- 616. Barry, J.
- 617. Conner, G.
- 618. Loomis, G.
- 619. Murray, G.

TOWNSEND

- 620. Bruce, A.
- 621. Iverson, K.
- 622. Miller, L.
- 623. Nash, P.

TROY

- 624. Cripe
- 625. Davis
- 626. Fisher
- 627. Hewett
- 628. Lyons

WESTBY

- 640. Mickelson, M.
- 629. Wittmayer, I.

WILBAUX

- 630. Goroski

WHITEHALL

- 631. Capp
- 632. Fouts

WHITE SULPHUR SPRINGS

- 633. Warren, W.

WILLSALL

- 634. Hebnes, J.
- 635. Fastje, R.
- 636. Olson, J.

WINIFRED

- 637. Phillips, D.
- 638. Udelhoven, J.

TRACK AND FIELD EVENTS

100-YARD DASH

1960 Winners—School

	Time
AA—Questad, Park	10.2
A—Opp, Dawson	9.9
B—Swanson, Whitefish	10.3
C—Flinders, Corvallis	10.4

Montana Record held by:
R. O'Malley, Butte, 1933,
Time: :09.8.

FINALS

Class AA—Time.....	Class A—Time.....	Class B—Time.....	Class C—Time.....
1.....	1.....	1.....	1.....
2.....	2.....	2.....	2.....
3.....	3.....	3.....	3.....
4.....	4.....	4.....	4.....
5.....	5.....	5.....	5.....

220-YARD DASH

1960 Winners—School

	Time
AA—Questad, Park	23.4
A—Tate, Hardin	23.7
B—Parnell, Mission	23.7
C—Grazier, Plains	24.0

Montana Record held by:
R. O'Malley, Butte, 1933,
Time: :21.6.

FINALS

Class AA—Time.....	Class A—Time.....	Class B—Time.....	Class C—Time.....
1.....	1.....	1.....	1.....
2.....	2.....	2.....	2.....
3.....	3.....	3.....	3.....
4.....	4.....	4.....	4.....
5.....	5.....	5.....	5.....

440-YARD DASH

1960 Winners—School

	Time
AA—O'Leary, Butte Central	50.0
A—Gunther, Custer	53.1
B—Dosch, Loyola	51.5
C—Grazier, Plains	52.1

Record held by:
Damaskos, Missoula, 1957
Time: 49.9.

FINALS

Class AA—Time.....	Class A—Time.....	Class B—Time.....	Class C—Time.....
1.....	1.....	1.....	1.....
2.....	2.....	2.....	2.....
3.....	3.....	3.....	3.....
4.....	4.....	4.....	4.....
5.....	5.....	5.....	5.....

880-YARD RUN

1960 Winners—School

	Time
AA—Greger, Helena	2:00.0
A—Plenty Hoops, Hardin	2:03.2
B—Wherly, Loyola	2:05.2
C—Ward, Holy Rosary	2:02.2

Record by:

R. Merwin, Missoula, 1956,
Time: 1:58.7.

FINALS

Class AA—Time.....	Class A—Time.....	Class B—Time.....	Class C—Time.....
1.....	1.....	1.....	1.....
2.....	2.....	2.....	2.....
3.....	3.....	3.....	3.....
4.....	4.....	4.....	4.....
5.....	5.....	5.....	5.....

ONE-MILE RUN

1960 Winners—School

	Time
AA—Jakub, Missoula	4:37.7
A—Turecotte, Billings Central	4:38.9
B—Brown, Red Lodge	4:34.2
C—Harris, Colstrip	4:38.1

Record by:

J. Kittell, Missoula, 1945,
Time: 4:27.6.

FINALS

Class AA—Time.....	Class A—Time.....	Class B—Time.....	Class C—Time.....
1.....	1.....	1.....	1.....
2.....	2.....	2.....	2.....
3.....	3.....	3.....	3.....
4.....	4.....	4.....	4.....
5.....	5.....	5.....	5.....

120-YARD HIGH HURDLES

1960 Winners—School

	Time
AA—Huggins, Flathead	15.5
A—Coulter, Laurel	16.1
B—Kansala, Red Lodge	15.9
C—Hewett, Troy	15.5

Record by:

D. McAuliffe, Butte Public,
1949.
Time: :14.8.

FINALS

Class AA—Time.....	Class A—Time.....	Class B—Time.....	Class C—Time.....
1.....	1.....	1.....	1.....
2.....	2.....	2.....	2.....
3.....	3.....	3.....	3.....
4.....	4.....	4.....	4.....
5.....	5.....	5.....	5.....

180-YARD LOW HURDLES

1960 Winners—School

	Time
AA—Short, Park	21.4
A—Green, Dawson	22.1
B—L. Yeager, Choteau	20.9
C—Hewett, Troy	21.9

Record by:

**C. Orr, Missoula, 1953,
Time: :19.6.**

FINALS

Class AA—Time.....	Class A—Time.....	Class B—Time.....	Class C—Time.....
1.....	1.....	1.....	1.....
2.....	2.....	2.....	2.....
3.....	3.....	3.....	3.....
4.....	4.....	4.....	4.....
5.....	5.....	5.....	5.....

SHOT PUT

1960 Winners—School

	Distance
AA—Fitzsimmons, Butte Public	56' 6¾"
A—Carlson, Custer	49' 8½"
B—Young, Fairfield	50' 3¼"
C—Wirtz, Corvallis	51' 9¼"

Record by:

**Fitzsimmons, Butte Public,
1960. Distance: 56' 6¾"**

FINALS

Class AA—Distance.....	Class A—Distance.....	Class B—Distance.....	Class C—Distance.....
1.....	1.....	1.....	1.....
2.....	2.....	2.....	2.....
3.....	3.....	3.....	3.....
4.....	4.....	4.....	4.....
5.....	5.....	5.....	5.....

JAVELIN THROW

1960 Winners—School

	Distance
AA—Christianson, Flathead	203' 8¾"
A—Domagala, Custer	158' 11"
B—Tushaus, Libby	175' 4¼"
C—Pack, Sheridan	176' 2¼"

Record by:

**Christianson, Flathead, 1960.
Distance: 203' 8¾"**

FINALS

Class AA—Distance.....	Class A—Distance.....	Class B—Distance.....	Class C—Distance.....
1.....	1.....	1.....	1.....
2.....	2.....	2.....	2.....
3.....	3.....	3.....	3.....
4.....	4.....	4.....	4.....
5.....	5.....	5.....	5.....

DISCUS THROW

1960 Winners—School

	Distance
AA—Eddington, Butte Public	165'
A—Carlson, Custer	146' 8"
B—Young, Fairfield	153' 7"
C—Musgrove, White Sulphur Springs	150' 9"

Record by:

Nate Eddington, Butte Public, 1960. Distance: 165'

FINALS

Class AA—Distance.....	Class A—Distance.....	Class B—Distance.....	Class C—Distance.....
1.....	1.....	1.....	1.....
2.....	2.....	2.....	2.....
3.....	3.....	3.....	3.....
4.....	4.....	4.....	4.....
5.....	5.....	5.....	5.....

HIGH JUMP

1960 Winners—School

	Height
AA—Huggins, Flathead	6' 6½"
A—Tie, Combs, Custer; Power, Hardin	5' 11"
B—Tie, Sherrick, Polson; Dennison, Thompson Falls	5' 10"
C—Pasley, Ennis	6' 1"

Record by:

Mike Huggins, Flathead, 1960. Height: 6' 6½"

FINALS

Class AA—Height.....	Class A—Height.....	Class B—Height.....	Class C—Height.....
1.....	1.....	1.....	1.....
2.....	2.....	2.....	2.....
3.....	3.....	3.....	3.....
4.....	4.....	4.....	4.....
5.....	5.....	5.....	5.....

BROAD JUMP

1960 Winners—School

	Distance
AA—Travis, Billings	22' 4"
A—Gunther, Custer	20' 11½"
B—Holmes, Helena Cathedral	20' 9¾"
C—Artz, Augusta	21' 5½"

Record by:

K. Nelson, Missoula, 1955, Distance: 22' 8½"

FINALS

Class AA—Distance.....	Class A—Distance.....	Class B—Distance.....	Class C—Distance.....
1.....	1.....	1.....	1.....
2.....	2.....	2.....	2.....
3.....	3.....	3.....	3.....
4.....	4.....	4.....	4.....
5.....	5.....	5.....	5.....

POLE VAULT

1960 Winners—School

	Height
AA—Tie, Rowland, Great Falls, and Riley, Butte Public	11' 6"
A—Tie, Sundlind, Dawson, and Zeiler, Custer	10' 6"
B—Aubrey, Shelby	11' 2"
C—Tie, Browkaw, Brocton; Moss, Dixon; Abrecht, Cascade; Fasje, Wilsall; Moore, Belgrade	10' 10"

Record by:

**W. Custer, Missoula, 1930,
Height: 12'10".
(Oldest Interscholastic Rec-
ord)**

FINALS

Class AA—Height.....	Class A—Height.....	Class B—Height.....	Class C—Height.....
1.....	1.....	1.....	1.....
2.....	2.....	2.....	2.....
3.....	3.....	3.....	3.....
4.....	4.....	4.....	4.....
5.....	5.....	5.....	5.....

880-YARD RELAY RACE

1960 Winners—School

	Time
AA—Missoula	1:32.7
A—Hardin	1:36.0
B—Loyola	1:33.3
C—Townsend	1:36.8

**Record by: Missoula (Boone,
Lewis, Danielson, Drinville),
1958. Time: 1:31.1.**

FINALS

Class AA—Time.....	Class A—Time.....	Class B—Time.....	Class C—Time.....
1.....	1.....	1.....	1.....
2.....	2.....	2.....	2.....
3.....	3.....	3.....	3.....
4.....	4.....	4.....	4.....
5.....	5.....	5.....	5.....

Welcome Interscholastic Visitors!

LIBERTY BOWLING CENTER

211 E. Main

Missoula

Montana

SCORE CARD

NOTE—Score 6 points for first place, 4 for second place, 3 for third place, 2 for fourth place, 1 for fifth place, including relay.

	100-yard Dash	220-yard Dash	440-yard Dash	880-yard Run	One Mile Run	Discus Throw	Pole Vault	High Jump	Broad Jump	120-yard Hurdles	180-yard Hurdles	Shot Put	Javelin Throw	Relay Race	TOTAL
CLASS AA															
Anaconda															
Billings Senior															
Butte Central															
Butte Public															
Flathead County															
Gallatin County															
Great Falls Public															
Helena															
Missoula County															
Park County															
CLASS A															
Billings Central															
Custer County															
Dawson County															
Glasgow															
Great Falls Central															
Hardin															
Hayre															
Laurel															
Fergus County															
Sidney															
CLASS B															
Absarokee															
Anaconda Central															
Baker															
Beaverhead County															
Big Timber															
Browning															
Chinook															
Choteau															
Circle															
Columbus															
Conrad															
Cut Bank															
Fairfield															
Fairview															
Forsyth															
Fort Benton															
Hamilton															
Harlem															
Harlowton															
Huntley Project															
Libby															
Lincoln County															
Lodge Grass															
Loyola, Missoula															
Malta															
Mission															
Nashua															
Plentywood															
Polson															
Poplar															
Powell County															
Red Lodge															
Scobey															
Shelby															
Stevensville															

SCORE CARD—(Continued)

NOTE—Score 6 points for first place, 4 for second place, 3 for third place, 2 for fourth place, 1 for fifth place, including relay.

[illegible]

The Record Holders...



440-YARD DASH

*Frank Damaskos,
Missoula (1957)*

HIGH JUMP

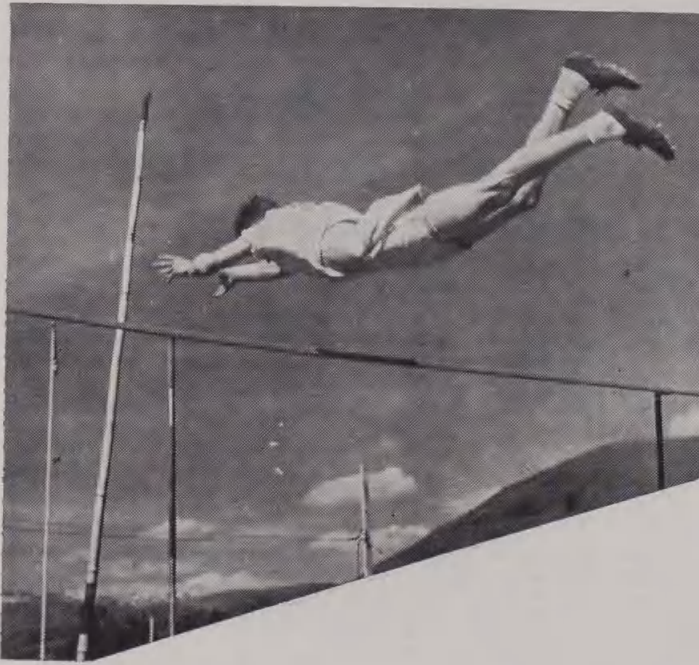
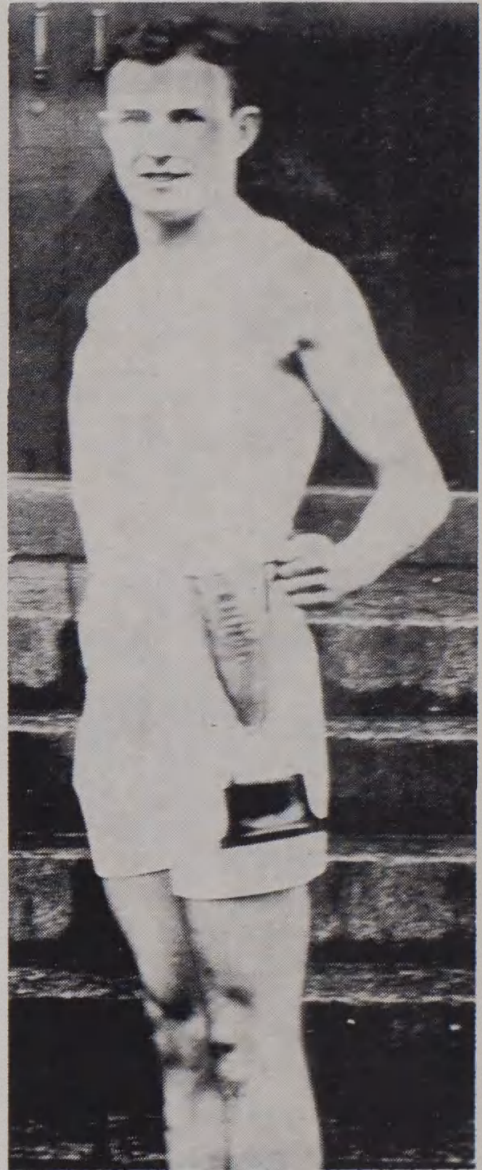
*Mike Huggins,
Flathead*



The Record Holders...

100- AND 220-YARD DASHES

*Bob O'Malley,
Butte Public (1933)*



POLE VAULT

*Walt (Bony) Custer,
Missoula, (1930)*

The Fastest Runner of Them All...

Flowers Wired Anywhere —

Rely On Us for Speedy Delivery!



GARDEN CITY FLORAL

Hotel Florence Building

The Record Holders...



LOW HURDLES

*Conrad Orr,
Missoula (1953)*



50-YARD DASH

*Lloyd Denny,
Flathead, 1908*



50 YEARS OF SERVICE

The Best in Savings and Home Loan Services

WESTERN MONTANA BUILDING AND LOAN

"Montana's Largest Savings Association"

Savings Center Building

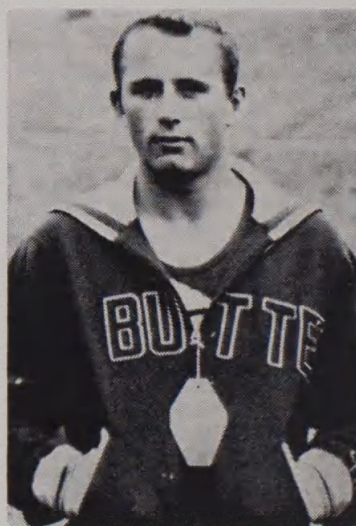
Missoula, Montana

The Record Holders...



HALF MILE RELAY **(Above)**

*Missoula (Tom Boone,
Bruce Danielson,
Chuck Drinville,
Larry Lewis) 1958.*



SHOT PUT

*Jerry Fitzsimmons,
Butte, 1960*

Have Fun Today !!

When you need Gasoline, we will appreciate your business —
Only Famous Brands Gasoline sold at Little Chief Stations.

3 Little Chief Stations to Serve You **SUPER SAVE MARKET**

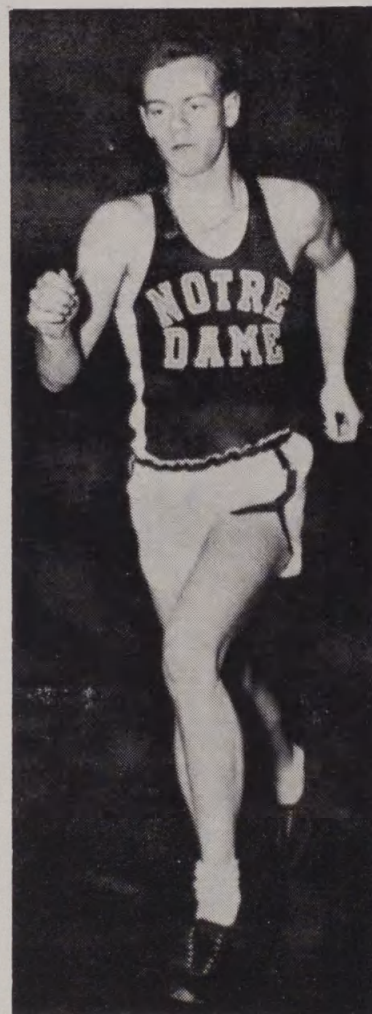
93 Highway

318 W. Broadway

The Record Holders...

MILE RUN

*Jim Kittel,
Missoula (1945)*



DISCUS THROW

*Nate Edington,
Butte, 1960*

**GIFT NOVELTIES
BOOKS
GREETING CARDS
GLASSWARE
COPPER**

WELCOME VISITORS

We hope you enjoy your stay in Missoula and invite you to come in and look over our fine selection of Gifts, Novelties and Cameras

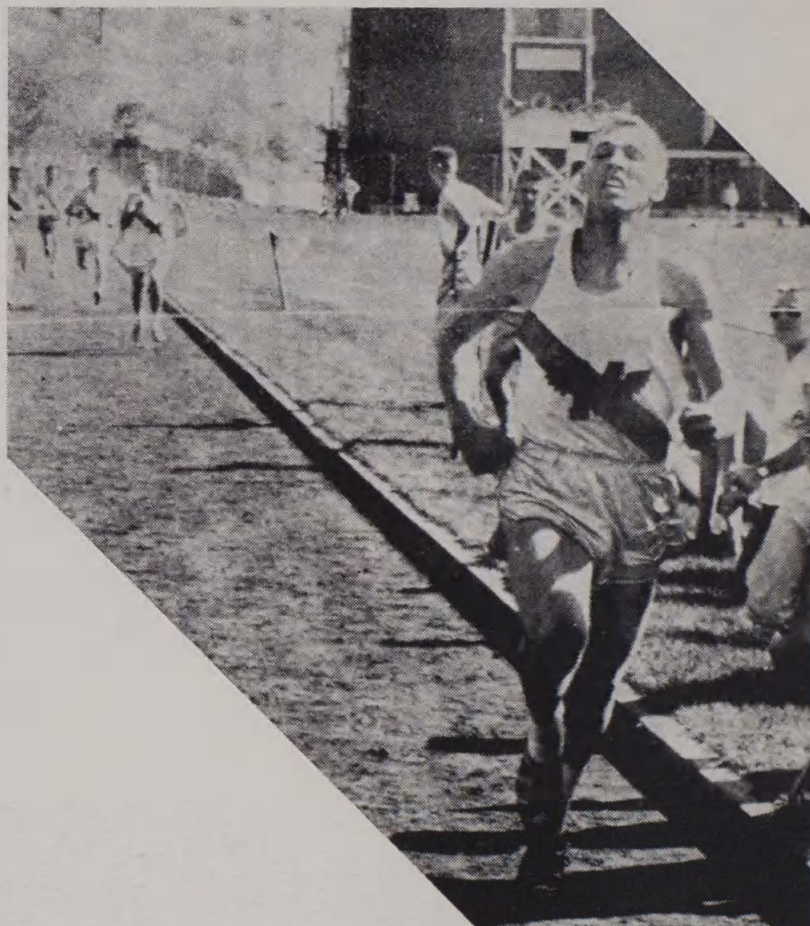
HAUGEN-McKAY CO.

**FINE CAMERAS
KODAKS, SUPPLIES
PORTRAITS
KODAK FINISHING
COMMERCIAL
PHOTOGRAPHY**

The Record Holders...

BROAD JUMP

*Ken Nelson,
Missoula (1955)*



880-YARD RUN

*Ray Merwin,
Missoula (1956)*

Welcome Visitors

If you need quick, reliable
service while here, see

OLNEY MOTORS

Pontiac

300 W. Main

Cadillac

LI 3-5177

THE GOLDEN PHEASANT

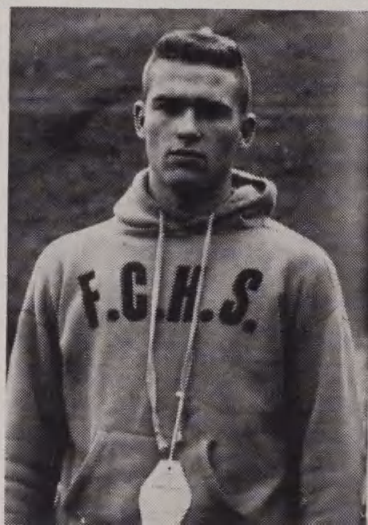
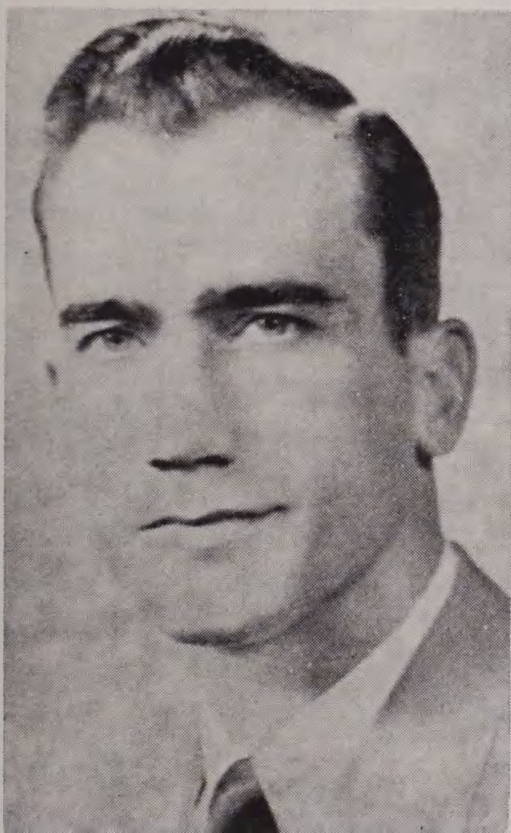
**American and Chinese
Dishes**

318 North Higgins

The Record Holders...

HIGH HURDLES

*Don McAuliffe,
Butte Public (1948)*



JAVELIN THROW

*Ken Christison,
Flathead, 1960*

Take Home a Souvenir from
Montana State University

Mugs

Pennants

Sweat Shirts

Associated Students' Store

Upstairs in the Lodge

CIRCLE BAR "S" CAFE

"Big Boy Burgers"

Shakes and Malts

Breakfast

Lunch

Dinner

1275 W. Broadway

Top Performances by Divisions...

(Note: The following are the best records through the years in each of the four track divisions of the Interscholastic. State records are marked by astericks).

CLASS AA

100 Yard dash	9.8 seconds	1933.....	R. O'Malley, Butte*
220 yard dash	21 seconds	1933.....	R. O'Malley, Butte*
440 yard dash	49.9 seconds	1957.....	F. Damaskos, Missoula*
880 yard run	1:58.7	1956.....	R. Merwin, Missoula*
Mile run	4:27.6	1945.....	J. Kittel, Missoula*
120 yard high hurdles	14.8 seconds	1948.....	D. McCauliffe, Butte*
180 yd. low hurdles	19.6 seconds	1953.....	C. Orr, Missoula*
Shot Put	56' 3¾"	1960.....	Jerry Fitzsimmons, Butte*
Pole vault	12' 10"	1930.....	W. Custer, Missoula*
Javelin	203' 8¾"	1960.....	Ken Christison, Flathead*
Discus	165'	1960.....	Nate Edington, Butte*
Broad jump	22' 8½"	1955.....	K. Nelson, Missoula*
High jump	6' 6½"	1960.....	Mike Huggins, Flathead*
880 relay	1:31.2	1958	Missoula*

THE FLORENCE . . . Missoula

America's Finest Motor Hotel

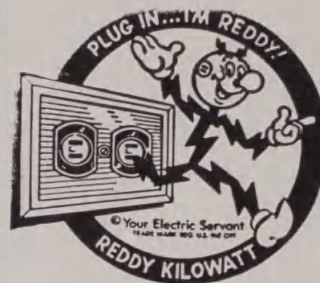
THE HOTEL WITH AN IDEAL

The Florence was conceived with the idea of providing Missoula and Western Montana with not just an ordinary hotel, but an outstanding one with high standards of operation. The recent fine addition—the New Motor Entrance and Pigeon Hole Garage—clearly indicate that the original concept is still the guiding influence. Seasoned travelers are amazed at the fine facilities—both guest room and dining that are available. Make use of them—you also can enjoy the luxury of an outstanding hotel.

Fast As Lightning!

Good, dependable electricity furnished by The Montana Power Company speeds 186,000 miles a second to do your bidding . . . at the flip of a switch.

THE MONTANA POWER COMPANY



CLASS A (Since 1954)

100 Yard dash	9.9 seconds	1960	R. Opp, Dawson Co.
220 yard dash	21.9 seconds	1955	C. Carlson, Custer Co.
440 yard dash	50.5 seconds	1958	D. Dotson, Sidney
880 yard run	2:02.0	1957	Micheals, Laurel
Mile run	4:38.9	1960	Turcotte, Billings Central
120 yard high hurdles	15.7 seconds	1958	J. Long, Dawson Co.
		1954	F. Connor, Custer Co.
180 yard low hurdles	20.5 seconds	1958	J. Long, Dawson Co.
High jump	6 ft. 2 inches	1956	Wylie, Havre
Broad jump	21 ft. 4¾ inches	1959	Lamb, Laurel
Pole vault	11 ft.	1956	Battrick, Fergus
Shot Put	49 ft. 8½ inches	1960	C. Carlson, Custer Co.
Discus	149 ft.	1959	C. Carlson, Custer Co.
Javelin	190 ft. 3 inches	1958	Clark, Custer Co.
880 relay	1 min. 33.5 seconds	1958	Sidney



*See the World's Largest Fishing
Tackle Board!*

**Thousands of Items to Choose
from!**

BOB WARD & SONS
321 No. Higgins

The Interscholastic Program

Printed in our plant . . .

Commercial Printing Department

The Missoulian-Sentinel

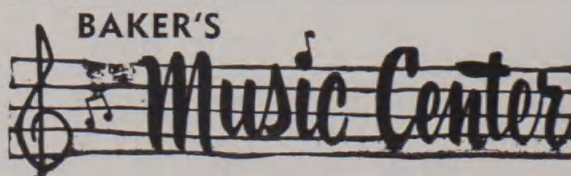
CLASS B

100 Yard dash	10.1 seconds	1956	Parker, Valier
220 yard dash	22.3 seconds	1959	R. Johnston, Fairfield
440 yard dash	50.5 seconds	1959	Lowney, Anaconda Central
880 yard run	2:01.0	1959	R. Wherley, Loyola
Mile run	4:32.4	1959	G. DeVries, Conrad
120 yard high hurdles	15.4 seconds	1956	Lohse, Choteau
		1954	*Wagenaar, Lodge Grass
180 yard low hurdles	20.4 seconds	1958	Knapton, Whitefish
Pole vault	12 ft. 2.5 inches	1954	R. Hankins, Whitefish
Shot Put	55 ft. $\frac{3}{8}$ inches	1958	R. Frisbee, Cut Bank*
Javelin	197 ft. 5 inches	1938	R. Gustafson, Corvallis*
Discus	153 ft. 1 inch	1955	P. Nelson, Libby
High jump	6 ft. 3 inches	1940	S. Muchmore, Drummond
Broad jump	22 ft. 3 inches	1959	J. Bjork, Harlowton
880 relay	1 min. 32.7 seconds	1959	Hamilton

Speaking of Records . . .

We are proud of our stock of current, standard and pop records . . . one of the largest in the Northwest. You'll get personalized attention for all your record needs.

Naturally . . .



310 N. Higgins

Phone LI 9-4165



TOWN HOUSE RESTAURANT

114 W. Main St.

Missoula, Montana

... HOUSE OF FINE FOODS

... Welcomes you to dine in MISSOULA'S NEWEST and
MOST MODERN RESTAURANT



★ BREAKFAST

FEATURING
★ LUNCHEON

★ DINNERS

★ Steaks cooked to your liking on our "Char Glo Broiler"

★ U. S. Choice Prime Rib of Beef, served daily

Open 7:00 A.M. to 9:00 P.M.

Closed Sundays and Holidays

CLASS C

100 Yard Dash.....	10.0 seconds	1957.....	J. Grasky, Sacred Heart, Miles City
220 Yard Dash.....	22.2 seconds	1957.....	Weidner, Troy
440 Yard Dash.....	50.4 seconds	1958.....	Weidner, Troy
880 Yard Run	2:02.2	1960.....	Ward, Holy Rosary, Bozeman
Mile Run	4:38.1	1960.....	Harris, Colstrip
120 Yard High Hurdles.....	15.5 seconds	1960.....	Hewett, Troy
		1959.....	Fhurmann, Charlo
180 Yard Low Hurdles.....	20.5 seconds	1957.....	Buck, Cascade
Pole Vault	11 ft. 8 inches	1958.....	Harmley, Three Forks
Shot Put.....	51 ft. 9¼ inches	1960.....	Wirtz, Corvallis
Javelin.....	176 ft. 2¼ inches	1960.....	Pack, Sheridan
Discus.....	150 ft. 9 inches	1960.....	Musgrove, White Sulphur Spgs.
High Jump.....	6 ft. 6 inches	1959.....	Hoppe, Townsend
Broad Jump.....	22 ft. 3 inches	1959.....	Simpson, Superior
880 Yard Relay.....	1:35.8	1959.....	Townsend



FILM FINISHED FAST

SEVEN-HOUR DEVELOPING AND PROCESSING

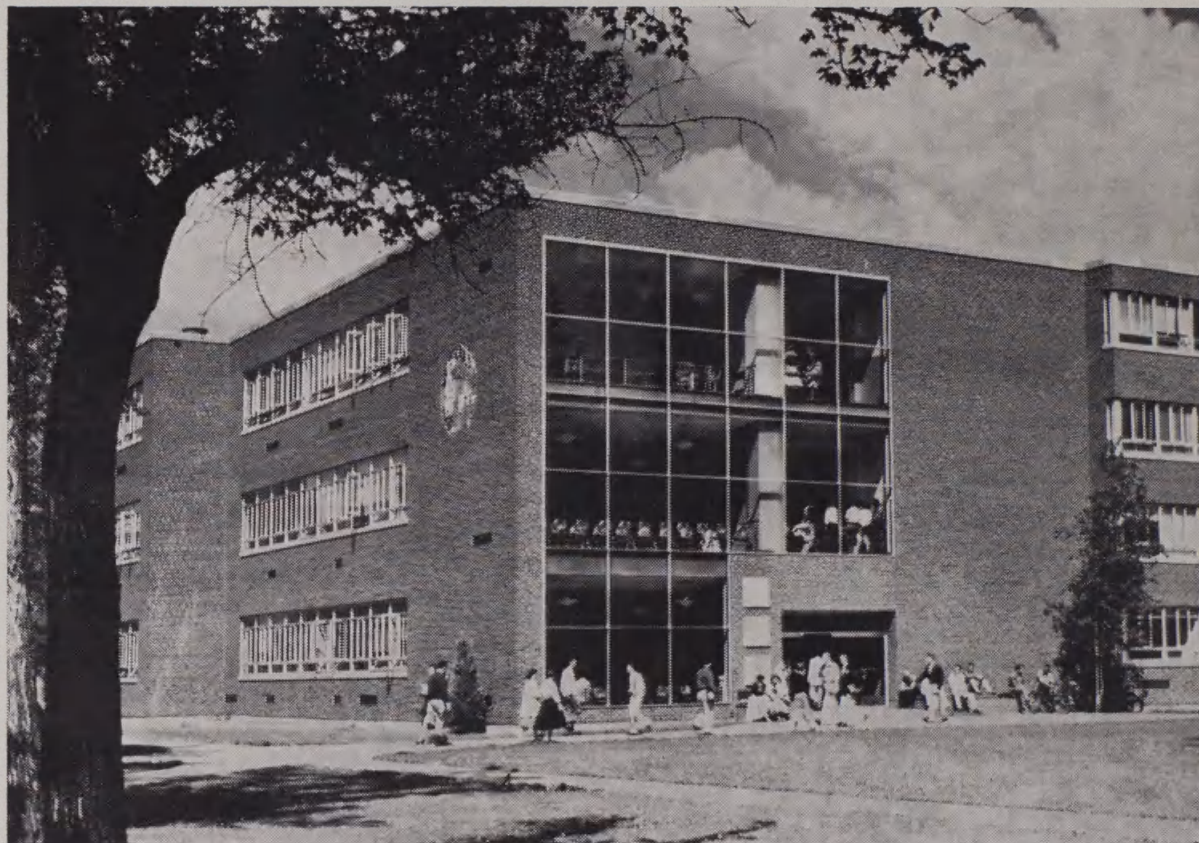
BLACK-AND-WHITE—In before 10 a.m., ready by 5 p.m.

EKTACHROME—In before 9 a.m., ready by 5 p.m.

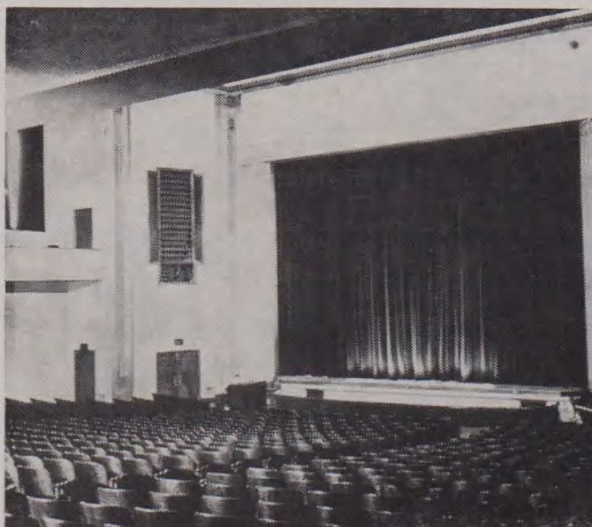
MISSOULA DRUG COMPANY

We're open at 8 a.m., Monday through Saturday . . . you can drop films to be finished in our special box on the front door at any time, day or night.

A Look at MSU...



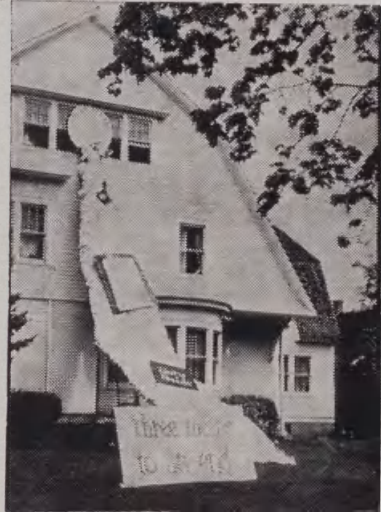
One of MSU's newer buildings, the Liberal Arts building is the University's biggest classroom building. Faculty members teaching in the liberal arts fields have offices in one wing. Currently an additional classroom and office wing is being constructed to house the many additional students expected at MSU in coming years.



Many Interscholastic plays will be presented in the University Theater this weekend. Saturday night the awards assembly will be held here. Both this and the Masquer Theater, located in the same building, will be used for drama competition.

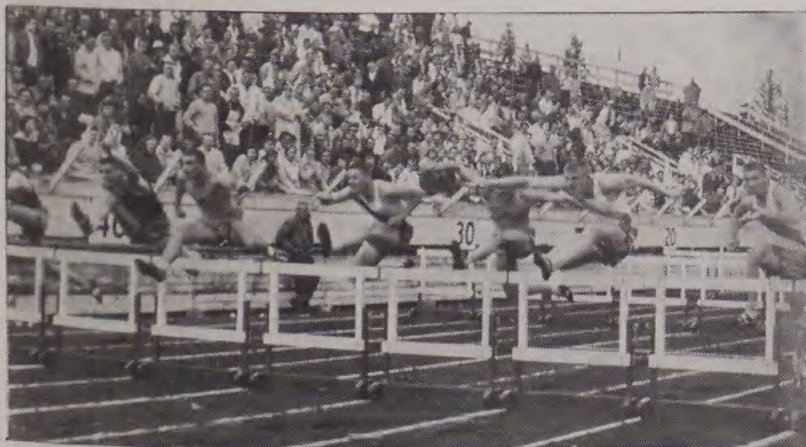
And 1960's Meet...

Friday afternoon the Parade of athletes winds around Dornblaser Field immediately prior to the presentation of the colors. Truly an inspirational sight and event to participate in, the Parade of Athletes is a fitting opening of the Interscholastic.



Each year MSU's fraternities and sororities decorate their houses to impress visitors with the role of the University in our society. Always interesting, these decorations capture the spirit of Interscholastic and MSU.

One of the busiest places on Dornblaser Field is the public address platform next to the winner's steps.



One of the most exciting races during Interscholastic is the high hurdles. Short in duration, 120 yards and 15 or so seconds, it's always good for a thrill.



1961 Interscholastic Committee

CHARLES F. HERTLER	General Chairman
J. Bennitt	Publicity and Programs
F. Brown	Little Theatre
G. Millis	Gatekeeper
Ed. Chinske	Track
Miss M. Clow	Women's Entertainment
A. Cogswell	Men's Entertainment
T. Crowder	Administrative Arrangements
R. Diettert	Entry Blanks
E. B. Dugan	Editorial Association
C. Lamb	Registration
J. Lester	Tennis
R. McGinnis	Speech Events
J. Hashiasaki	Head Scorer
E. Torggrimson	Physical Equipment
V. Wilson	Tennis

Students:

Bear Paws	Glenn Aasheim
Spurs	Myra Shults

Acknowledgment...

The Interscholastic Committee wishes to extend its thanks to the following organizations and individuals for their invaluable assistance in making the 55th Interscholastic a success:

Spurs and Bear Paws for their advanced ticket sales work.

The Kiwanis, Lions, Rotary and Exchange service clubs.

The Missoula Mercantile.

The Missoula Chamber of Commerce.

The Missoula merchants who contributed so generously to the advanced ticket sales campaign and program advertising.

Missoula city and county officials.

The Montana University band and its director, James Eversole.

The Daily Missoulian and Sentinel and County Times and Montana Kaimin.

Radio Stations KGVO, KXLL, KQTE, KYSS, and television station KMSO-TV.

The campus ticket sales committee.

The University Traditions Board and cooperating fraternities, sororities, dormitories and other student groups.

Earl Martell, director of Student Activities-Facilities.

Miss Gertrude Chamberlain and Mrs. Homer Anderson, directors of Food Services and Residence Halls.

The many Montana citizens who contributed their time and talent as judges in the various events.

Sigma Delta Chi for the advance publicity and meet coverage.

1865



1961

**look for the names you know
... the famous labels you trust**

Why? For the assurance of integrity of design ... the unquestionable quality. That's what we look for in the names we put our faith in ... the famous labels you'll always find present at:

The Mercantile

MONTANA'S OLDEST AND LARGEST DEPARTMENT STORE

While in Missoula

Eat at

**HAPPY HENRY'S
CAFE**

Palace Hotel Building

Welcome Visitors

When You Think
of Clothes, it's

ANGELO'S

111 E. Main

EVERYTHING NEW at

Buttreys

FASHION SHOP

Welcome Visitors!

**ELMER SHEA'S
FURNITURE CO.**

517 Orange

LI 9-7131

Your Host, Montana State University...

Located in the heart of the Rocky Mountains, Montana State University indeed has something to offer every scholar. MSU is a young school. Founded in a borrowed schoolhouse in 1895, the academic climate is too brisk to permit ivy to take root. It wasn't too long ago that Salish Indians hitched their ponies to a University fence or tree to gather bitterroot for medicine.

Today MSU is an educational center with 55 buildings on the main campus located on the eastern edge of Missoula. Its nearly four thousand students study in the shadow of Mount Sentinel, a mountain rising at the campus' edge and owned entirely by the University.

The Missoula valley does not confine all of the University. To the north in the Blackfoot Valley is the 20,000 acre Lubrecht experimental forest and the biological station on Flathead Lake. In the northwest corner of the state is the Neils Forest Camp.

Several noted schools within the University including the School of Journalism, called "justly famous" by the author of the "Inside" books, John Gunther, the Forestry School, the Music School and the Law School give MSU a National reputation of excellence. A faculty well known throughout the academic world reside in Missoula and instruct students during their first four years and then, to those who qualify, through additional years of graduate study that may lead to a master's degree or the PhD.

This is the campus that once knew Harold Urey, Clarence Streit, Mike Mansfield, now majority leader in the United States Senate, A. B. Guthrie and many another famous name. Montana's present governor, Donald Iveter is a graduate of MSU's Law School.

Close to many of the nation's finest recreational areas, weekends and holidays find MSU students fishing western Montana's noted trout streams, water skiing on the lakes surrounding Missoula, visiting Glacier and Yellowstone National Parks or during winter months skiing on slopes within five miles of the campus.

For the athlete and sports fan MSU has much to offer. A well rounded program of intramural sports is available to men and women attending the University. Physical education here is planned to permit enjoyment of individual and team sports as well as to further the ancient Greek idea of combining a sound mind and body.

Varsity athletics have carved their place in Montana's sports history and the "Grizzlies" are known throughout the Mountain West. MSU is a member of the Mountain States Athletic Conference, better known as the Skyline Conference. Varsity sports include football, basketball, skiing, swimming, baseball, track and field, golf, tennis, cross country and several minor sports. The "M" jacket is a coveted award among University men and is worn with pride on and off the campus.

The future of MSU is as bright as her colors, Copper, Silver and Gold. More classroom space and student housing are planned to accommodate the influx of additional students as the University and the state of Montana grow. With our nation and world stepping into a new era with a challenge greater than when the first white men crossed the Treasure State's borders two centuries ago, MSU is preparing for an ever more important place in providing trained youth to open the road to tomorrow.

