

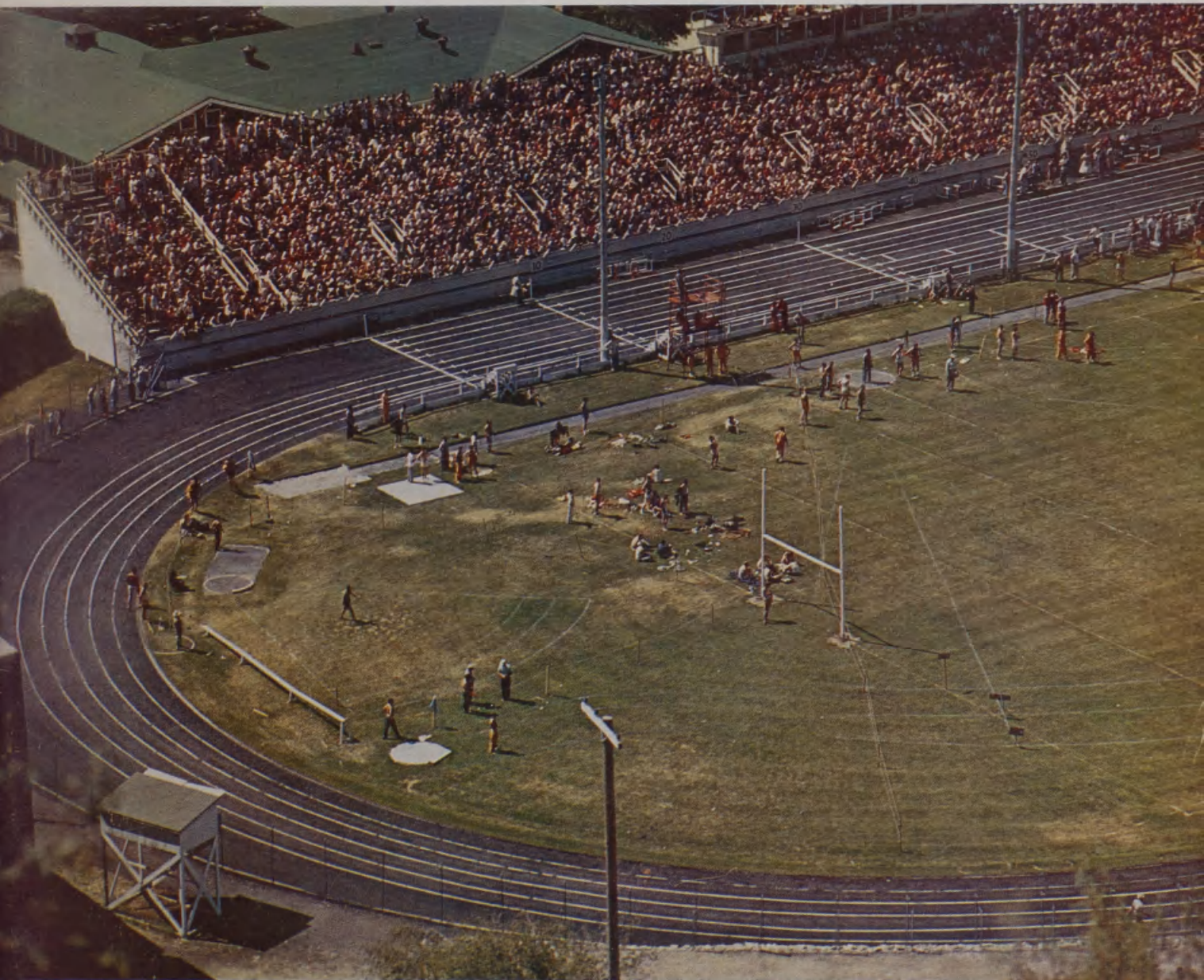
THE
56th
ANNUAL



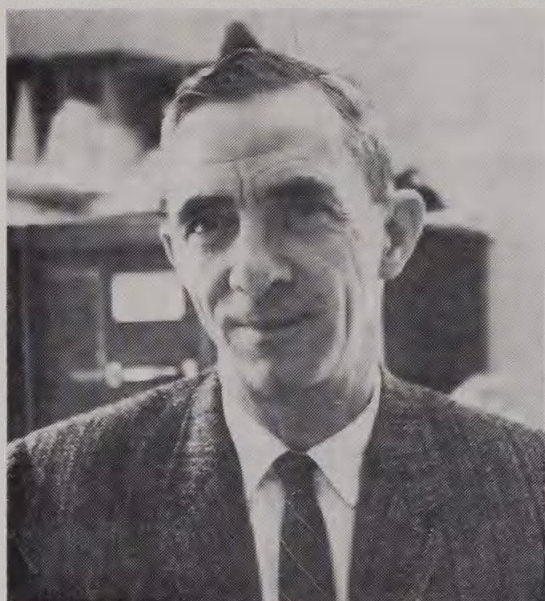
INTERSCHOLASTIC

OFFICIAL SOUVENIR PROGRAM

50 CENTS



MONTANA STATE UNIVERSITY—MAY 25-26, 1962—MISSOULA, MONTANA



CHARLES
HERTLER,
Interscholastic
Chairman

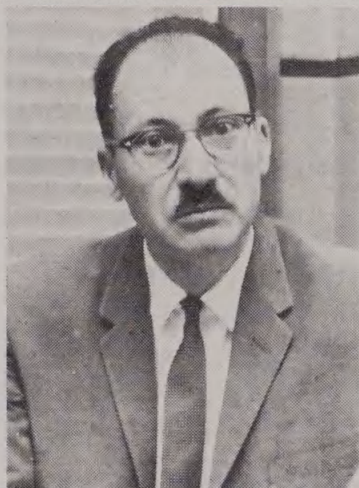


REX
DALLEY,
Executive
Secretary,
Montana
High School
Association

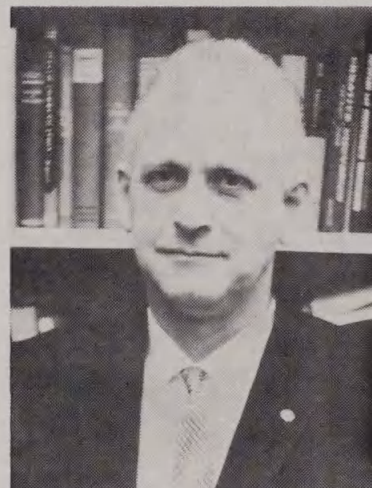
To Answer Your Questions, See:



FIRMAN BROWN
Little Theater



EDWARD DUGAN
Editorial Association



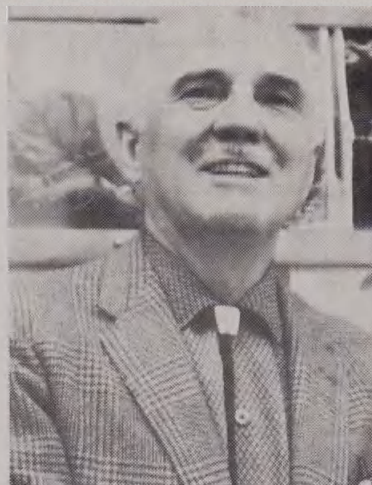
RALPH MCGINNIS
Speech



GEORGE DAHLBERG
Track and Field



VINCE WILSON
Tennis



JOHN LESTER
Golf

It's Been 58 Years

(Editor's Note: We are indebted to Dr. Asa Willard, who passed away on the eve of the 1959 Interscholastic for many of the highlights of the following story on the Interscholastic. Dr. Willard saw and helped with every Interscholastic until his death.

Others assisting in this historical account include Interscholastic Chairman Charles Hertler; Jiggs Dahlberg, MSU professor of health and physical education; Ray Rocene

of the Daily Missoulian; Jack Ryan and Cyrile Van Duser of the University News Service, and "Mick" and "Snudge" Sullivan from Butte, to whom this Interscholastic program is dedicated.

There are many others who deserve recognition. Rather than be embarrassed by the omission of names, let us instead offer appreciation to all who have assisted with Interscholastic throughout its history.)

It's been 58 years since that first 1904 Interscholastic Meet at Montana State University when 19 schools and 77 track and field contestants sought honors on the field behind Main Hall.

No Dornblaser Field existed then. The bleachers were attached to the back of what is now the TV and Photo Studio Building a few yards north of Dornblaser.

Six or seven hundred spectators crowded into the stands in 1904 and watched those 77 high school athletes run, jump, and throw. The remainder stood around the outside of the track or perched themselves on the side of Mount Sentinel.

Few houses were in the University district. A board walk ran from the south end of the Higgins Street Bridge directly to the campus. Main Hall dominated the University scene as it does today. Several other buildings surrounded Main Hall and the structures stood out conspicuously on the bare prairie with few trees or houses nearby.

All Missoula business establishments were closed for the final day of Interscholastic, and the entire town turned out to observe the event.

Since there were only 19 Montana high schools entered in Interscholastic, no competitive classes had been organized. The boys from a town of 200 competed against those from a much larger community. One lad named Wiles from Virginia City, which was then credited with fewer than 300 souls, entered the mile and two-mile races and won them both. Today, as then, many of the smaller schools still have the most outstanding athletes.

The student University newspaper, the Kaimin, reported the events dutifully in the popular journalistic style of yesteryear. More concerned with the doings of several literary societies than news and sports, it did report a tale of how one group of contestants was treated to an automobile ride around the Oval. Another group received a pleasant jaunt four or five miles into the wilds of Montana to Fort Missoula.

Those early contestants were an interesting lot. Most track and field competitors had never seen or worn spiked shoes. Some took their mother's shears to an old pair of pants and made knee-length shorts. Shirts were colorful and ranged from dad's old undershirt to a turtle-neck sweater that may or may not have come off at race time. A versatile lot, pompadours were popular with athletes who used the extra shock of hair as a football helmet in the fall.

The 1904 Interscholastic had three events that have not been included in Interscholastic for some years: the hammer throw, 50-yard dash, and two-mile run.

The hammer throw was eliminated in 1915 and replaced with the javelin in 1916 because the sturdy young lads who heaved the lead ball on the end of the steel chain often had poor aim. Frequently it would head toward groups of spectators or participants, far from its intended target.

The two-mile race was dropped in 1907 because the racers often ended the contest in total exhaustion. They literally ran their hearts out and endangered their health.

The 50-yard dash was discontinued in 1928. The contestants often finished the race in a dead heat with many claiming victory, perhaps justly.

Uncooperative Montana weather then, as now, was always a problem in the first Interscholastics. Rain, snow, hail, thunder storms, mud, cold and sleet have all given Interscholastic officials plenty to worry about over the years. The pleasure of the weatherman, however, has little to do with the excitement or success of the meet, and records are as likely to be broken in unfavorable weather as on balmy days.

Every year we hear the remark: "Oh sure, it will rain this week; it's Interscholastic week." But people have a tendency to remember the years it did and forget the Interscholastics that were sunny.

Not all was serious in those early Interscholastics. Grandparents and the fathers and mothers of today's contestants participated in many joyous activities that bring back pleasant memories. This is verified by "Mick" Sullivan's account of the first Interscholastic on the dedication page.

Those first Interscholastics are a far cry from the Interscholastic you will see this weekend. However, the spirit is stronger than ever. The athletes may or may not be better, but the faster times and countless broken records since 1904 indicate that Montana athletes are better than their fathers.

Since those first meets, many events have also been added to the Interscholastic. Today, more than half of the participants come for events beside track and field. Many come for speech, journalism, theater, golf and tennis.

In 1914 University President E. B. Craighead

wrote in the Interscholastic program that the Montana Interscholastic was the "third largest event in the United States." The next year, in 1915, it was labeled the second largest, and largest West of the Mississippi.

We can't make such extravagant claims today. But, nevertheless, the annual Montana State University Interscholastic is heralded throughout the West and is looked forward to with expectation by all.

Montana State University's Interscholastic is likely to remain Montana's greatest track meet first and always.

Excerpts from a newspaper article in the May 18, 1904 **Daily Missoulian** still express our opinion today:

"No man knows what his best efforts are until he is put to the test. No man who has not had a severe test can give a true estimate of his ability. Such meets as this supply to the youths the tests, physically and mentally, which they need to know their ability.

"... such meets as these fill the boys and girls with enthusiasm. Enthusiasm rules the world. The buoyancy, hope, and ambition of a few hundred high school pupils is an inspiration to older hands. . . . Such meets supply the stimulus for action, give material for using their wits and their muscles, and supply a fund of ideas to be worked over later when the individuals are older and more mature."



A 1919 or 1920 Billings Relay Team (Photo courtesy of C. Owen Smithers, Butte, Montana.)

From the 1909 Interscholastic...



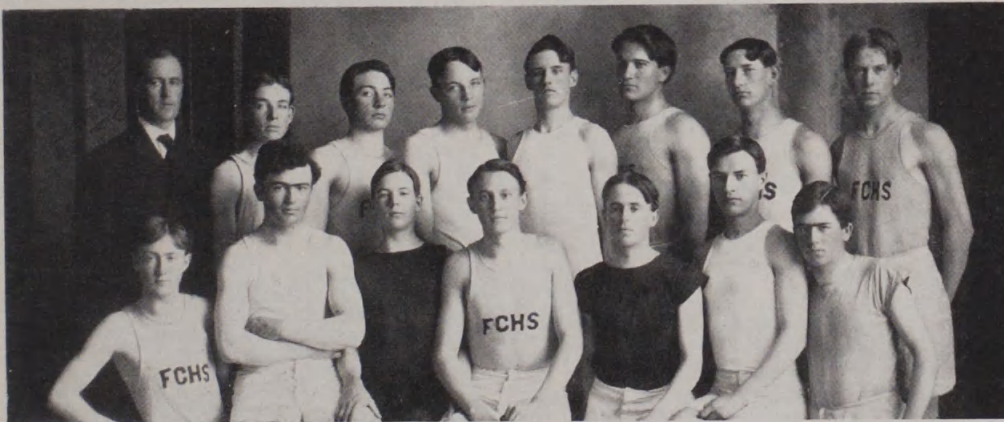
GALLATIN
COUNTY
TEAM,
1909



TETON
COUNTY
TEAM,
1909



CUSTER
COUNTY
TEAM,
1909



FERGUS
COUNTY
TEAM,
1909



BUTTE
TEAM,
1909

ASMSU'S Interscholastic...

Your stay in Missoula will largely be spent by taking part in and observing the many Interscholastic events. During your free time, however, you will greatly enjoy the activities that ASMSU (Associated Students at Montana State University) and campus living groups and organizations have planned for you.

In addition to enjoying the entertainment, you are invited to make use of University facilities. The bowling alley in the Women's center will be open, and the grill in the basement of the University Lodge will be serving snacks and meals.

Thursday night, the day before Interscholastic officially begins, head football coach Ray Jenkins will have his men out on Dornblaser Field. The team will climax a month of spring football practice with an intersquad game at 8 p.m. This game is always a good indication of how the MSU football team will shape up for the coming season and has always been a popular spectacle with previous Interscholastic crowds.

Friday night at 6:30 Newman Club, the MSU Catholic student organization, will sponsor a songfest on the University Oval. The theme of the songfest will be "Around the World With Song," and more than 21 campus organizations will participate, each representing a foreign country and wearing appropriate costumes.

At 8 p.m. Friday, ASMSU and the School of Fine Arts will produce a play entitled "Street Scene" at the University Theater. You will want to make a special point of seeing this Pulitzer Prize drama.

Saturday afternoon at 5:30 ASMSU will have a bar-be-que on the University Oval. You are invited to get in on the big feed and enjoy the entertainment afterwards. Entertainment at 6:45 in front of the University Main Hall will feature singing by campus quartets. Novelty dance numbers will also be presented, and Miss Joanna Lester, Miss Montana for 1962, will sing several of her well known musical numbers. After that, a parade of all campus queens will take place.

Interscholastic will wind up with the presentation of awards at the University Theater Saturday night at 8 p.m. After this, the AFROTC will sponsor a dance at the Lodge at 9 p.m.

One group of students deserving special mention is Sigma Delta Chi, Men's professional journalism society. This group of about 20 men is responsible for the great bulk of the Interscholastic news gathering and distribution. Many of them will work late into Friday and Saturday nights to be certain every detail has been adequately covered.

Two other groups of students should also receive recognition—the Bearpaws and Spurs. Both groups have helped with the advance Interscholastic ticket sales and the selling of this program. The Spurs also assist in keeping score of the track and field portions of Interscholastic.

Other students assist in taking picture of winners, selling refreshments, keeping the traffic moving, maintaining the track, setting up equipment, and cleaning.

To obtain a full schedule of what is being planned for you during the 1962 Montana Interscholastic, inquire at the registration desk.



↑
SATURDAY
EVENING
BAR-BE-QUE

SPURS,
SOPHOMORE
WOMEN'S
HONORARY
←

Program of the Meet ...

FRIDAY, MAY 25

- 6:30 a.m.—**Boys' Golf.** All contestants meet in front of the Lodge for transportation to Missoula County Club course.
- 7:30 a.m.—**Girls' Golf.** All contestants meet in front of the Lodge for transportation to Missoula County Club course.
- 7:30 a.m.—**Boys' Tennis.** All participants report to Men's Gymnasium.
- 7:30 a.m.—**Girls' Tennis.** All contestants report to Women's Center.
- 8:00 a.m.—**Extemporaneous Speaking.** Drawings for topics in Yellowstone Room of the Lodge.
- 8:00 a.m.—**Original Oratory.** Round I. Assignments in Yellowstone Room of the Lodge.
- 8:00 a.m.—**Declamation and Oral Interpretation of Literature.** Meeting of all contestants in Yellowstone Room of the Lodge.
- 8:00 a.m.—**Little Theater Festival.** University Theater and Masquer Theater.
- 8:30 a.m.—**Boys' Tennis.** Singles and doubles. University Courts.
- 9:00 a.m.—**Girls' Tennis.** Singles and doubles. University Courts.
- 9:00 a.m.—Meeting of athletic representatives of all schools at Men's Gym for distribution of contestant numbers.
- 9:00 a.m.—**Original Oratory.** Round II.
- 9:00 a.m.—**Extemporaneous Speaking.** Round I.
- 9:00 a.m.—**Interscholastic Editorial Association.** Journalism Building.
- 10:00 a.m.—**High School Directors Meeting.** Masquer Theater.
- 10:00 a.m.—**Debate.** Round I. Assignments in Yellowstone Room of the Lodge.
- 10:00 a.m.—**Declamation.** Round II.
- 10:00 a.m.—**Oral Interpretation.** Round II.
- 11:00 a.m.—**Original Oratory.** Round III. (semi-finals).
- 1:00 p.m.—**Debate.** Round II.
- 1:00 p.m.—**Oral Interpretation.** Round III.
- 1:00 p.m.—**Presentation of the Colors.**
- 1:10 p.m.—**Track and Field Meet.** Parade of Athletes at Dornblaser Field.
- 1:30 p.m.—**Little Theater Festival.** University Theater and Masquer Theater.
- 2:00 p.m.—**Extemporaneous Speaking.** Drawing for topics.

- 2:00 p.m.—**Declamation.** Round III.
- 3:00 p.m.—**Extemporaneous Speaking.** Round II.
- 3:00 p.m.—**Oral Interpretation.** Semi-finals.
- 4:00 p.m.—**Declamation.** Semi-finals.
- 4:00 p.m.—**Debate.** Round III.
- 6:30 p.m.—**Newman Club Songfest on Oval.**
- 8:00 p.m.—**Declamation.** Oral Interpretation and Original Oratory. Finals. School of Music Recital Hall.
- 8:00 p.m.—**All-School Show.** University Theater.

SATURDAY, MAY 25

- 6:30 a.m.—**Boys' Golf.** All contestants meet in front of the Lodge for transportation to Missoula County Club course.
- 7:30 a.m.—**Girls' Golf.** All contestants meet in front of the Lodge for transportation to Missoula County Club course.
- 8:00 a.m.—**Boys' Tennis.** All participants report to Men's Gymnasium.
- 8:00 a.m.—**Girls' Tennis.** All participants report to Women's Center.
- 8:00 a.m.—**Debate.** Round IV.
- 8:00 a.m.—**Little Theater Festival.** University Theater and Masquer Theater.
- 8:30 a.m.—**Boys' Tennis.** Singles and doubles. University Courts.
- 9:00 a.m.—**Girls' Tennis.** Singles and doubles. University Courts.
- 9:00 a.m.—**Extemporaneous Speaking.** Drawing for topics.
- 10:00 a.m.—**Extemporaneous Speaking.** Round III.
- 10:30 a.m.—**Debate.** Round V (quarter-finals).
- 12:00 Noon—**Luncheon Meeting** of teachers of English, Drama and Speech.
- 1:15 p.m.—**Track and Field Meet.** Finals.
- 1:30 p.m.—**Little Theater Festival.** University Theater and Masquer Theater.
- 1:30 p.m.—**Debate.** Semi-finals.
- 2:00 p.m.—**Extemporaneous Speaking.** Drawing for topics.
- 3:00 p.m.—**Extemporaneous Speaking.** Finals. LA103.
- 4:30 p.m.—**Debate.** Finals. LA103.
- 5:30 p.m.—**ASMSU Bar-B-Que on Oval.**
- 8:00 p.m.—**Little Theater Festival.** University Theater.
- 8:00 p.m.—**Awarding of Prizes.** University Theater.
- 9:00 p.m.—**AFROTC Dance.** University Lodge.



↑ JOURNALISM
BUILDING

UNIVERSITY
LODGE



Editorial Association ..

All-State Newspaper Ratings, 1961

Iniwa, Great Falls High School
Stampede, Havre High School
Arrow, Flathead County High School,
Kalispell
Konah, Missoula County High School
Nugget, Helena High School
Laurel Leaves, Laurel High School
Cat Paw, Columbia Falls High School
Conelet, Sacred Heart Academy, Mis-
soula
Husky Herald, Belt High School
Whiteallite, Whitehall High School
Bay Breeze, Bigfork High School
Pow Wow, Ronan High School
Refiner, Sunburst High School
Panther Parade, Roundup High School
Hi-Power, Power High School
Lariat, Augusta High School
Beacon Flashes, Alberton High School
Mission Bells, Mission High School, Hays
Bear Paw, Box Elder High School
Gusher, Oilmont High School
Static, Ennis High School
Talon, Fromberg High School
SHS in Action, Stanford High School
East Junior High News, Great Falls

Sigma Delta Chi, professional journalism fraternity, will award six trophies for writing in three divisions: news feature, editorial and sports. Individual trophies will be awarded to contestants placing first in each division, and larger traveling trophies will be awarded to the schools from which the winning writers are delegates. A school winning one of these trophies three times will gain permanent possession.

Theta Sigma Phi, professional journalism fraternity for women, will make two "outstanding journalist awards" to the girls selected for having shown most notable achievements in scholarship, journalism activities and other high school activities. Nominees will be selected by high school publications staff and advisers.

The Montana Interscholastic Editorial Association will meet in the Journalism building at 9 a.m. Friday. MIEA delegates will be given contestants' badges at registration for admission to all Interscholastic events.

Annual newspaper ratings will be announced at the close of the Friday morning session. Awards in this contest will be made upon the basis of the following classification:

- A—Enrollment 500 or more
- B—Enrollment 250 to 500
- C—Enrollment 100 to 250
- D—Enrollment under 100
- E—Inserts or departments of community newspapers
- F—Junior high school

Papers in each class will be rated All-State, Superior, Good or Fair.

For additional information, write to Prof. Edward B. Dugan, School of Journalism, Montana State University, Missoula, Montana.

Speech Events...

Declamation

Finalists for 1961: Oratorical, 1st—Daryl Sande, Havre Central H.S. 2nd—Terry McDonald, Loyola H.S. 3rd—Karen Buescher, Sacred Heart Academy.

Dramatic, 1st—Frank Schulz, Loyola H.S. 2nd—Gay Schroff, Park Co. H.S. 3rd—Zona Hodges, Great Falls H.S.

Humorous, 1st—Frank DuBois, Great Falls H.S. 2nd—Steve Williams, Loyola H.S. 3rd—Judy O'Brien, Great Falls Central H.S.

Oratorical Declamation

District—Contestant	High School
I Aaron Stansberry	State Industrial School
I Jacque Peter	Glasgow H. S.
I Kay Heinrichs	Custer County H. S.
I Carma Christensen	Custer County H. S.
I Don Kirklin	State Industrial School
II Burley Packwood	Billings Senior H. S.
II John Erickson	Billings West H. S.
II Chuck Bradstrup	Billings Senior H. S.
III Ben Holden	Great Falls Public H. S.
III Carol Boetcher	Great Falls Public H. S.
III Dennis Ramsel	Great Falls Central H. S.
III Carol Ragland	Great Falls Central H. S.
III Kathy Dion	St. Leo's H. S.
IV Teddy Grant	Havre Central H. S.
IV John Wilford	Havre Public H. S.
IV Pam Dickinson	Havre Central H. S.

IV Margaret Smith	Havre Public H. S.
IV Ed Wahlner	Chinook H. S.
V Kathy Heagney	Rosary H. S.
V Laury Eck	Bozeman Senior H. S.
V Don Best	Willow Creek H. S.
V Cindy Proffitt	Park County H. S.
V Barbara Hokanson	Park County H. S.
VI Janice Wagner	Sacred Heart Academy
VI Russ Pilcher	Loyola H. S.
VI Wayne Vandeberg	Loyola H. S.
VI Glenda Rock	Sacred Heart Academy
VI Nancy Hendricks	Missoula County H. S.

"The Store for Men and Women Who Buy for Men"

Yandt's
MEN'S WEAR

**KUPPENHEIMER CLOTHES DOBBS HATS
FLORSHEIM SHOES**

403 N. Higgins

Phone 543-7711

P A U L ' S PANCAKE PARLOR AND CAFE

17 Kinds of
DELICIOUS PANCAKES
(Including Sourdoughs)

Next to the Fox Theatre

Dramatic Declamation

District—Contestant	High School
I May Rhoads	Custer Co. H. S.
I Robert J. Kinyon	State Industrial School
I Richard Hanley	State Industrial School
I Marivawn Bailey	Glasgow H. S.
II Barbara Wegner	Billings Central H. S.
II Emily Schlaht	Billings Sr. H. S.
II Helena Strobel	Sweet Grass Co. H. S.
II James Paulsen	Billings West H. S.
II Dianne Leach	Billings Sr. H. S.
III Terry Todd	Great Falls Central H. S.
III Frank duBois	Great Falls Central H. S.
III Judy Farlan	Great Falls Central H. S.
III Carol Stotts	Great Falls Public H. S.
III Jean Reepe	Winifred H. S.
IV Sharon Jasmine	Havre Central H. S.
IV Joan Hannicker	Havre Public H. S.
IV Marcia Batcheller	Havre Public H. S.
IV Daryl Sande	Havre Central H. S.
IV Janice Personen	Chinook H. S.
V M. Overlie	Bozeman Sr. H. S.
V B. LeBlanc	Anaconda H. S.
V Liz Olsen	Rosary H. S.
V Bob Norton	Butte Public H. S.
V Leslie Stein	Park Co. H. S.
VI Patsy Maxon	Missoula Co. H. S.
VI Cathy Cody	Missoula Co. H. S.
VI Marsha Flynn	Sacred Heart Academy
VI Steve Williams	Loyola H. S.
VI Dave Flynn	Flathead Co. H. S.

Humorous Declamation

District—Contestant	High School
I Sharlene Howe	Glasgow H. S.
I Carol Spears	Custer Co. H. S.
I Ronald Paulson	State Industrial School
I Rhonda Reness	Glasgow H. S.
II Bob Orth	Billings West H. S.
II Sue Marquardt	Billings Sr. H. S.
II Jock Scowcroft	Billings Sr. H. S.
II Susan Anderson	Sweet Grass Co. H. S.
II Lorrie Riedlinger	Billings Central H. S.
III Stan Lee Pavek	St. Leo's H. S.
III Sandi Grant	Great Falls Public H. S.
III Elizabeth Esterl	Great Falls Central H. S.
III Charles Boyle	Great Falls Central H. S.
III Sharon Browning	Great Falls Public H. S.
IV Chris Keller	Havre Central H. S.
IV Dunc Morrison	Havre Public H. S.
IV David Sodergren	Chinook H. S.
IV Linda Shortell	Havre Public H. S.
IV Judy Harmon	Chester H. S.
V Jim Murphy	Rosary H. S.
V Robert Lehrkind	Bozeman Sr. H. S.
V Joyce Berry	Girls' Central H. S.
V Mike Doyle	Lima H. S.
V Alice Sue Armitage	Ennis H. S.
VI Brian Bedard	Loyola H. S.
VI Virginia Coulter	Charlo H. S.
VI Tom Demmons	Flathead Co. H. S.
VI Barbara Stiers	Sacred Heart Academy
VI Becky Taber	Missoula Co. H. S.

Debate

Winners for 1961: 1st, Dave McNicol, Lauren McKinsey, Great Falls Public H.S. 2nd—Bob Folsom, Terry Fitzpatrick, Missoula Co. H.S. 3rd—(Tie), Dave Wels, Bud Spall, Great Falls Central H.S.; Pam Bompert, Jerry Cooper, Helena H.S.

Question for 1962: "Resolved: That the Federal Government should equalize educational opportunity by means of grants to the states for public elementary and secondary education."

District—Contestants—High School

- I Larry Boyd and Russel Cykoski
Glasgow H. S.
- I Mary Beth King and Myran Sizer
Glasgow H. S.
- I Gary Habedank and Barbara White
Sidney H. S.
- I Tim Ziebarth and Catherine Wolhowe
Custer Co. H. S.
- I Marvin Brittenham and Linda Bird
Custer Co. H. S.
- I Daniel Kemmis and Dick Williams
Sidney H. S.
- II Tony Jackson and Walt Kirpatrick
Billings Sr. H. S.
- II Cheryl Newton and Peggy Wallis
Billings West H. S.
- II James Stuart and Jim Wood
Billings West H. S.
- II Judy Massman and Carol Craighill
Billings Central H. S.
- II David Rye and Charles Robinson
Billings Sr. H. S.
- III Harry Power and David Wells
Great Falls Central H. S.
- III Dan Wick and Dave McNicol
Great Falls Public H. S.
- III Hugh Spall and Joe Ingvalson
Great Falls Central H. S.
- III Bill Buckingham and Joe Kerkvliet
Great Falls Public H. S.
- III Mike Strouf and Ed Eck
Fergus County H. S.
- III Ron Pitt and Gene Chapman
Denton H. S.
- III Cornell and Kulish
Stanford H. S.
- III Gigstad and Schmidt
Stanford H. S.
- IV Bruce McCullough and James Vandeberg
Havre Public H. S.
- IV Lawrence Black and Richard Floren
Havre Public H. S.
- IV Mary Antunes and Eleanor Goligoski
Havre Central H. S.
- IV Robert Kurtz and John Malsam
Havre Central H. S.
- IV Charles Palm and Carrie Bradie
Chinook H. S.
- IV John Pherson and Robert Brekke
- IV Nioma Bitz and Mary Vosen
Box Elder H. S.

- V Laury Eck and Diana Ack
Bozeman Sr. H. S.
- V Ed Bohart and Mike Mullian
Bozeman Sr. H. S.
- V Jane Van Fossen and Mary Jo Breshovich
Anaconda H. S.
- V Ronald Coleman and Gary Libecap
Park County H. S.
- V Frances Monahan and Linda Wolahan
Girls' Central H. S.
- V Karen Diamond and Cathy Becker
Rosary H. S.
- V Bob Hervolich and Ted Marchion
Anaconda H. S.
- V Bob McKay and Gene Heiser
Rosary H. S.
- VI Joe Hampson and Les Miller
Missoula Co. H. S.
- VI Amy Custer and Nancy Bader
Missoula Co. H. S.
- VI Mary Beck and Suzanne Pennypacker
Sacred Heart Academy
- VI Linda Thompson and Barbara Marinan
Sacred Heart Academy
- VI Tom Honzel and Mike Nelson
Loyola H. S.
- VI Steve Williams and Steve Roffler
Loyola H. S.

Oral Interpretation of Literature

Winners for 1961: 1st—Nina Paulis, St. Mary's of the Mount. 2nd—Lew Williams, Billings Sr. H.S. 3rd—LeRoy Julien, Great Falls Central H.S.

District—Contestant

School

- I Sharon Weise Glasgow H. S.
- I Pat Cutler Custer Co. H. S.
- I Erika Hanson Custer Co. H. S.
- I Joe Bradbury Glasgow H. S.
- II Laurie Jones Billings Sr. H. S.
- II Barbara Shannon Billings Sr. H. S.
- II Bob Conley Harlowton H. S.
- II Carole Erickson Billings West H. S.
- II Shirley Algard Sweet Grass Co. H. S.
- III Joan Baucus Great Falls Public H. S.
- III Valerie Dickerson Great Falls Central High
- III Curt Andrus Great Falls Public H. S.
- III Sheri Mellas Fergus County H. S.
- III Pam Kottas Denton H. S.
- IV Patty Seamens Havre Central H. S.
- IV Phil Yates Havre Public H. S.
- IV JoAnn McLean Havre Public H. S.
- IV Georgia Mack Havre Central H. S.
- IV Beverly Gratton Chinook H. S.
- V Regina Cullen Bozeman H. S.
- V Mary Lou Tudor Park Co. H. S.
- V Robert Proffitt Park Co. H. S.
- V Geraldine Knight Beaverhead Co. H. S.
- V Gary Morck Butte Public H. S.
- VI Ed Steiner Loyola H. S.
- VI Katie Tuxbury Sacred Heart Academy
- VI Eilene Corr Sacred Heart Academy
- VI Sharon Emery Missoula Co. H. S.
- VI John Hutchinson Missoula Co. H. S.

Boys Extemporaneous Speaking

Winners for 1961: 1st—George Sendon, Great Falls Public H.S. 2nd—Jack Mudd, Great Falls Central H.S. 3rd—(Tie) Linda Taylor, Flathead Co. H.S.; Lee Vaage, Missoula Co. H.S.

District—Contestant	High School
I Jim Knaff	Glasgow H. S.
I Ken Meyers	Glasgow H. S.
I Kenneth Nolley	Custer Co. H. S.
II Dave Large	Billings Sr. H. S.
II Rex Stratton	Billings Sr. H. S.
III Steve Kohl	Great Falls Public H. S.
III Jim Ophus	Great Falls Public H. S.
III Neil Ugrin	Great Falls Central H. S.
III Lloyd Teigan	Helena H. S.
III Harry Wicks	Fergus Co. H. S.
IV Joe Almas	Havre Public H. S.
IV Roger Wilson	Havre Public H. S.
IV Charles Gallus	Havre Central H. S.
IV John Almas	Havre Central H. S.
IV Joe Upshaw	Chinook H. S.
V Doug Baty	Bozeman Sr. H. S.
V George Polich	Park Co. H. S.
V Dick Abbott	Bozeman Sr. H. S.
V Jim Dorsey	Anaconda H. S.
V Charles Chumrow	Anaconda H. S.
VI Lee Vaage	Missoula Co. H. S.
VI Steve Roffler	Loyola H. S.
VI Dan Harper	Missoula Co. H. S.
VI Jon Larson	Flathead Co. H. S.

Girls Extemporaneous Speaking

District—Contestant	High School
I Cheryl Myrah	Glasgow H. S.
I Marilyn Dakken	Glasgow H. S.
I Kathleen Kelly	Custer Co. H. S.
II Barbara Lape	Sweetgrass Co. H. S.
II Judy Layng	Billings Central H. S.
III Janet Dains	Great Falls Public H. S.
III Robin Guern	Great Falls Public H. S.
III Colleen Thomas	Great Falls Central H. S.
III Faye Bourret	Great Falls Central H. S.
III Marcia McLevern	St. Leo's H. S.
IV Alice Fussell	Havre Public H. S.
IV Karen Shaefer	Chester H. S.
IV Sara Watts	Havre Public H. S.
V Kit Kelly	Bozeman Sr. H. S.
V Kathy Burton	Bozeman Sr. H. S.
V Connie Callahan	Girls' Central H. S.
V Barbara MacLeod	Butte Public H. S.
V Connie Carkeek	Ennis H. S.
VI Suzanne Pennypacker	Sacred Heart Academy
VI Mary Provost	Sacred Heart Academy
VI Linda Taylor	Flathead Co. H. S.
VI Kathy Browman	Missoula Co. H. S.

Original Oratory

Winners for 1961: 1st—Don Torgenrud, Great Falls Public H.S. 2nd—Dennis Nelson, Loyola H.S. 3rd—Seb Ramsel, Great Falls Central H.S.

District—Contestant	High School
I Jim Sebens	State Industrial School
I Frank Hill	Custer Co. H. S.
I Greg Ulmer	Custer Co. H. S.
I Karen Pattison	Glasgow H. S.
I Philip Philey	Glasgow H. S.
II Doug Lasie	Billings Sr. H. S.
II Greg Kastl	Billings West H. S.
II Nancy Quinlivan	Billings Central H. S.
II Tom Buck	Billings West H. S.
II Ken Tolliver	Billings Sr. H. S.
III Ray McKerow	Great Falls Public H. S.
III Seb Ramsel	Great Falls Central H. S.
III Caroline Schlosser	St. Leo's H. S.
III Russell Coter	Great Falls Central H. S.
III Larry Gurley	Great Falls Public H. S.
IV Kent Parcell	Havre Public H. S.
IV George Antunes	Havre Central H. S.
IV Gary Stevens	Havre Public H. S.
IV Margaret McLaughlin	Havre Central H. S.
IV Monica Feig	Chester H. S.
V Chuck Sylvis	Bozeman Sr. H. S.
V Shelley Bryant	Bozeman Sr. H. S.
V George Redding	Butte Public H. S.
V Carol Herderty	Rosary H. S.
V Dianna Lueck	Park Co. H. S.
VI Dick Southern	Missoula Co. H. S.
VI Sam Casne	Flathead Co. H. S.
VI Kathy Williams	Missoula Co. H. S.
VI Jeannie Haugen	Flathead Co. H. S.
VI Bernard Glueckert	Loyola H. S.

WELCOME VISITORS

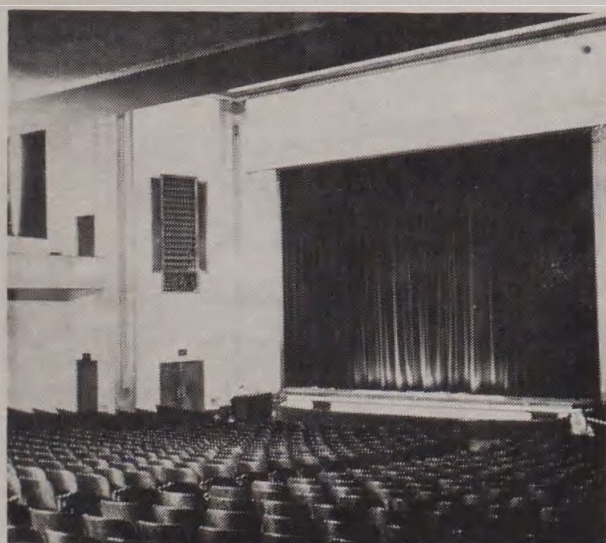
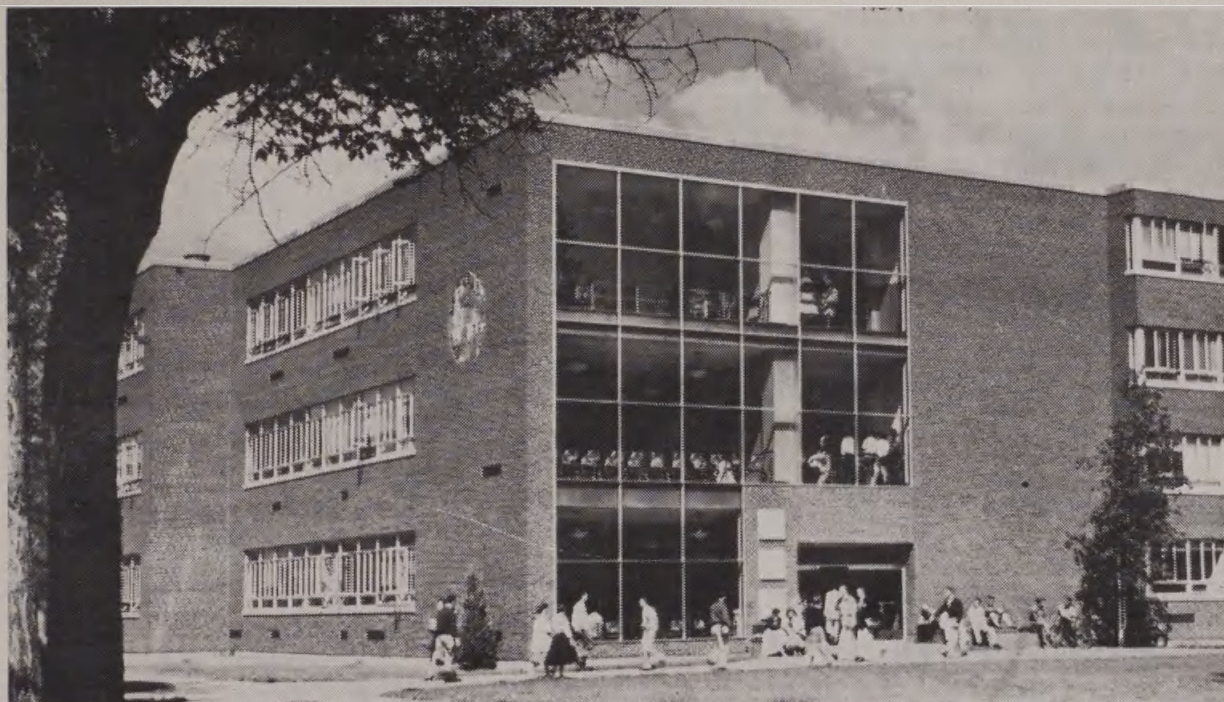
from

Dragstedts

Everything Men Wear

on

Circle Square



↑
LIBERAL
ARTS
BUILDING

UNIVERSITY
THEATER
←

"Welcome Trackmeet Visitors"

**When Money Matters
It Pays to Think . . .**

Temporary Address
150 W. SPRUCE



Home Folks
Since 1873

Member Federal
Deposit Insurance
Corporation

Little Theater Festival...

WINNERS IN 1961

Winning Plays

"The Old Lady Shows Her Medals," by J. M. Barrie, Mrs. Barbara Watts, director, Bozeman High School.

"Sisters McIntosh," by Richard Carson, Mr. Mervin Wertz, director, Sweet Grass County High School (Big Timber).

University Theater Plays

BEST ACTOR

John Parker as Private Dowey in "The Old Lady Shows Her Medals," Bozeman High School, Mrs. Barbara Watts, director.

BEST ACTRESS

Jane Nelson as Lily Pepper in "Red Peppers," Missoula County High School, Bruce Cusker, director.

BEST CHARACTER ACTOR

Larry James as the King in "The Ugly Duckling," Libby High School, Mrs. Olga Erickson, director.

BEST CHARACTER ACTRESS

Marilyn White as Mrs. Dowey in "The Old Lady Shows Her Medals," Bozeman High School, Mrs. Barbara G. Watts, director.

BEST BIT ACTOR

Jim Welsh as Nick in "The Long Voyage Home," Great Falls Central Catholic High School, Fr. Harvey D. Livix, director.

BEST BIT ACTRESS

Hazel Bowker as Dulcibella in "The Ugly Duckling," Libby High School, Mrs. Olga Erickson, director.

Masquer Theater Plays

BEST ACTOR

John Rose as Warden Holt in "The Valiant," Fromberg High School, Mrs. Jean Higham, director.

BEST ACTRESS

Trudy Bodsén as Jane in "Mooney's Kid Don't Cry," Flathead County High School (Kalispell), R. Chapman, director.

BEST CHARACTER ACTOR

John Maiveras as Lomov in "The Marriage Proposal," Havre High School, Miss Betty Browne, director.

BEST CHARACTER ACTRESS

Paula Gusick as Mrs. Popov in "The Boor," Columbia Falls High School, Francis Fitzpatrick, director.

BEST BIT ACTOR

Dick Fulton as Imke in "The Boor," Columbia Falls High School, Francis Fitzpatrick, director.

BEST BIT ACTRESS

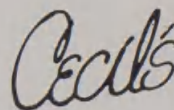
Susan Carotte as Hester in "The Red Key," Girls' Central High School (Butte), Sister Mary Hilaria, director.

WINNER OF ROBERTS MEMORIAL SCHOLARSHIP—Jane Nelson, Missoula County High School, Missoula.

WINNER OF AWARD OF MERIT TO A DIRECTOR

Mrs. Olga Erickson, Libby High School
Miss Betty R. Browne, Havre High School

WELCOME VISITORS



Ladies' Apparel, Millinery
Visit Our Exclusive Bridal-Formal Salon

Tele. 543-5610 Missoula Hammond Arcade

While in Missoula

Eat at

**HAPPY HENRY'S
CAFE**

Palace Hotel Building

1961 Little Theater Festival...

SCHEDULE OF PERFORMANCES

Friday and Saturday, May 25 and 26, 1962

MASQUER THEATER

Dr. Douglas H. Bankson, Associate Professor, Dept. of Drama, Montana State University, Adjudicator.

UNIVERSITY THEATER

Mr. Firman H. Brown, Jr., Chairman, Dept. of Drama, Montana State University, Adjudicator.

FRIDAY

- 8:30 a.m.—Conrad, "Happy Journey to Camden and Trenton," William Anderson, director.
- 9:30 a.m.—Bozeman, "Born Yesterday," Mrs. Barbara Watts, director.
- 10:30 a.m.—Great Falls Central, "Spreading the News," Fr. Harvey Livix, director.
- 11:30 a.m.—Great Falls Public, "Fumed Oak," Clyde Lund, director.
- 1:30 p.m.—Chinook, "The City Slicker and Our Nell," Thomas DeYarman, director.

SATURDAY

- 8:00 a.m.—Loyola, Missoula, "Minor Miracle," Fr. Michael Kelliher, director.
- 9:00 a.m.—St. Leo's, Lewistown, "Patterns," Sister Mary Joseph, director.
- 10:00 a.m.—MEETING TO DISCUSS THEATER SECTION OF MONTANA HIGH SCHOOL SPEECH LEAGUE
- 12:30 p.m.—Havre, "The Importance of Being Earnest," Miss Betty Browne, director.
- 1:30 p.m.—Miles City, "Last Flight Over," Carl Luther, director.
- 2:30 p.m.—Stanford, "Fear is a Murderer," Mrs. Loretta Hammer, director.

FRIDAY

- 8:00 a.m.—Missoula County, "Hello Out There," Bruce Cusker, director.
- 9:00 a.m.—Hamilton, "Overtones," Sally Bohac, director.
- 10:00 a.m.—Livingston, "The Lottery," Robert Hill, director.
- 11:00 a.m.—Anaconda, "Sham," John R. Doohan, director.
- 1:00 p.m.—Columbia Falls, "Charlie's Aunt," Francis Fitzpatrick, director.

SATURDAY

- 8:00 a.m.—Sweet Grass, Big Timber, "Sunday Costs Five Pesos," Mervin Wertz, director.
- 9:00 a.m.—Beaverhead, Dillon, "Fog on the Valley," J. B. Michalson, director.
- 10:00 a.m.—MEETING TO DISCUSS THEATER SECTION OF MONTANA HIGH SCHOOL SPEECH LEAGUE (Masquer Theater)
- 1:00 p.m.—Missoula County, "The Taming of the Shrew," Bruce Cusker, director.
- 2:00 p.m.—Poplar, "The Rainmaker," Robert McKinnon, director.

Golf and Tennis...

GIRLS' GOLF

BILLINGS SENIOR

Myhre, Marilyn
Petentler, Judy
Wells, Shelley

BOZEMAN

Hanshaw, Sharon

FLATHEAD COUNTY

Denny, Dot
Gillette, Genie
Halvorsen, Karen
Orrison, Debbie
Pearce, Nancy
Peterson, Judy

GIRLS' CENTRAL—BUTTE

Good, Carlin

GLASGOW

Howe, Charlene
Pattison, Karen

GREAT FALLS

Foppe, Sandra
Johnson, Claudie

MISSOULA COUNTY

Dixon, Joanne
Larson, Robyn

BOYS' GOLF

ANACONDA

Devich, Jerry
Devich, Richard
Fiest, Tony
Holderreed, Glen
Lodell, Dennis
Nordquist, Eddle
Stipech, John

BILLINGS, SENIOR

Cosman, Raymond
Korns, Robert
Rahn, David III
Rye, David

BILLINGS CENTRAL

Becker, Ed
Hogan, Mike
Reugamer, Bill
Schruth, Mike

BILLINGS—WEST

Elliot, Steve
Elliot, William
Jacobson, Bob
Kriedenier, Doug
Nelson, Dick

BOZEMAN

Aaker, Don
Hasch, Bill
Peterson, Carl
Raggio, Frank
Wolfe, Doug

BUTTE—SENIOR

Drowbay, Gary
Edwards, Paul
Johnson, Bill
Koprivica, Gary
Kriskovich, Jerry
Olson, Harold
Ramsey, Bob
Warren, John

CHESTER

Hanson, Dennis

CHOTEAU

McCartney, Mike

CHRISTIAN BROTHERS

(Butte Central—Boys)

Armstrong, Paul
Brancamp, Robert
Mihelich, Donald
O'Brien, Jay
Wilcox, William

CUSTER COUNTY

Gamrath, Wayne
Keller, Ron
Moger, Mike
Seversob, Bob

FERGUS COUNTY

Haugen, Bill
Huffine, Dale
Ramsey, Ron
Rofsness, Jim

FLATHEAD COUNTY

Elliot, Tom
Fehrman, Steven
Ludwig, Robert
Manion, Tim
Paul, Alvin
Rose, Morris
Simpson, Larry
Sundelius, John
Warden, Doug
Wills, Robert

GREAT FALLS

Anderson, Ron
Black, Tom
Flynn, Bruce
Fraser, David

GREAT FALLS—continued

Fraser, Don
Hodges, Tom
Robinson, Owen
Youngdale, Dave

GLASGOW

Baker, Jerry
Crowley, Jim
Worrell, Phil

GREAT FALLS CENTRAL

Bulger, Tom
Gilligan, John
Sprinkle, Bill
Walsh, Mike

HAMILTON

Bell, Kenny
Carls, John
MacLean, Don
Rothlisberger, Dan

HAVRE CENTRAL

Helmsbrecht, Dennis
Hess, Paul
Hilla, Albert
Kuka, Monty
Leeds, John
Leeds, Philip
Malsam, John
McLain, Mike
Seelinger, James
Williams, Stan

HELENA

Dion, Bill
Finley, Drew
Kuntz, Tom
Lanthorn, Wayne
Moore, Jim
Thompson, Dick
Thompson, Ted
Wright, Bill

LOYOLA (Missoula)

Austin, James
Austin, Richard
Harr, Bruce
McKay, Donald
Pilcher, Russ

MISSOULA COUNTY

Brown, Jim
Chumrau, Mike
Denton, Bill
Lindsay, Reggie
Ogg, Bob
Olson, Marvin
Peterson, Gary
Thomas, Bob
Wetzel, Kurt
Wright, Phil
Searles, Jim

PARK COUNTY

Blair, Donald
Halmquist, Dick
Hamilton, Jeff
Rodman, Gary
Thompson, Bobby

POLSON

Black, Fred
Fisher, Jerry
Hambly, Larry
Hansman, Ron
Johnson, Don
Stabbert, Bruce

WHITEFISH

Bechedahl, Beau
Collins, John
Garritty, George
Peschel, Herbert
Stocking, Glen

BOYS' TENNIS—SINGLES

BILLINGS CENTRAL
Ellingson, Norman

BILLINGS SENIOR
Hurt, Lee
Lauson, Kent
Pratt, Randy

BILLINGS WEST
Davies, Parker
Gerbase, Joseph
Jamison, Don
Kenney, Bill
Noyes, Dick
Palm, Terry

BOZEMAN
Fitzgerald, Tim
Harmon, Dave

BOZEMAN—continued
Kelley, Mike

CUSTER COUNTY
Brown, Jim
Gudmundson, Gary
Gudmundson, Gene
Hill, Frank
Thompson, Larry
Thompson, Phil
Ziebarth, Tim

FLATHEAD COUNTY
Bartsch, Jerry
Hellman, Bob
Hensleigh, Bill
La Roque, Bob
Ottenbrecht, Don

FLATHEAD—continued
Price, Don
Vidal, Jim

GREAT FALLS
Affelstein, Brett
Alexander, John
Hurd, Richard
Moser, Mark

GREAT FALLS CENTRAL
Nixon, Thomas
Schmitz, Jay

HAMILTON
Albert, Paul
Champlin, Malcom
Collins, Pat

HAMILTON—continued
Hughes, Jim
Hughes, Stanley
MacLean, Jim
Ormsbee, Barry

HELENA
Holt, Jack
Meloy, Tim
Morris, Brad
Peralys, Hector
Peterson, Jeff
Septon, Gary
Septon, Jerry
Tangen, Bill
Walter, Bill

MANHATTAN
Fenno, Kenneth
Figgins, Raymond

MISSOULA COUNTY
Fox, Jim
Jacobs, Randy
Kekich, Brian
Newburn, Mike
Nay, Niles
Schatz, Bud

SHELBY
Baldwin, Mike
Borge, Mike
Lunda, Harry

BOYS' TENNIS—DOUBLES

BILLINGS SENIOR
Hurt, Lee
Lawson, Kent
Pratt, Randy

BILLINGS WEST
Davies, Parker
Gerbase, Joseph
Jamison, Don
Kenney, Bill
Noyes, Dick
Palm, Terry

BOZEMAN
Fitzgerald, Tim
Kelley, Mike

CUSTER COUNTY
Brown, Jim
Gudmundson, Gene
Hill, Frank
Thompson, Larry
Thompson, Phil
Ziebarth, Tim

FLATHEAD COUNTY
Bartsch, Jerry
Hellman, Bob
Hensleigh, Bill
La Roque, Bob
Ottenbrecht, Don
Price, Don
Vidal, Jim

GREAT FALLS
Affelstein, Brett
Alexander, John
Hurd, Richard
Moser, Mark

HAMILTON
Albert, Paul
Champlin, Malcom
Collins, Pat
Hughes, Jim
Hughes, Stanley
MacLean, Jim
Ormsbee, Barry

HELENA
Holt, Jack
Meloy, Tim
Morris, Brad
Peralys, Hector
Peterson, Jeff
Septon, Gary
Septon, Jerry
Walter, Bill

MANHATTAN
Fenno, Kenneth
Figgins, Raymond

MISSOULA COUNTY
Fox, Jim
Jacobs, Randy
Kekich, Brian
Newburn, Mike
Nay, Niles
Schatz, Bud

SHELBY
Baldwin, Mike
Borge, Mike
Lunda, Harry

GIRLS' TENNIS—SINGLES

BILLINGS CENTRAL
Ferro, Nancy
Kamperschroer, Margie

BILLINGS SENIOR
Bertleson, Linda
Clark, Pat
Dutcher, Ann
Helms, Julie
Jones, Janie
McMillan, Kate

BILLINGS WEST
Breshears, Kay
Grasshuesch, Cheryl
Larson, Margaret
Roberts, Jane
Torgerson, Annette
Verhelst, Peggy

BOZEMAN
Obert, Judy

CORVALLIS
Covert, Janice
Marsh, Marilyn

CUSTER COUNTY
Albrecht, Judy
Bergusson, Carol
Brown, Joan
Jones, Donna

FLATHEAD COUNTY
Madsen, Vicki
McLeod, Sharon
Norden, Janet
Ramsey, Marie
Robinson, Peggy

**GIRLS' CENTRAL—
BUTTE**
Lingley, Diane
O'Keefe, Colleen

GLASGOW
King, Mary Beth

GREAT FALLS
Appelstein, Linda
Womsley, Diane

GREAT FALLS CENTRAL
Fasbender, Polly
Heffern, Mary
O'Connor, Anita
Zabrocki, Betty

HAMILTON
Ahlgren, Helen
Bell, Sue
Cory, Lauralyn
Enebo, Janice
Peterson, Jane
Taylor, Peggy
Vadheim, Hollis

HELENA
Cougill, Candence
Huffman, Jeri
Morgan, Mikal
Reynolds, Francie

MISSOULA COUNTY
Bergstrom, Sue
Bue, Janet

MISSOULA—continued
DeMers, Kay
Hansas, Diane
Hoon, Janice
Rafferty, Shirley
Sayer, Jeanette

**SACRED HEART
ACADEMY—MISSOULA**
Gjording, Cecelia
Hartsell, Joan
Honzel, Gretchen
Schriver, Joyce
Thompson, Julie

SHELBY
Leavitt, Dennise
Sheridan, Geraldine

GIRLS' TENNIS—DOUBLES

BILLINGS SENIOR
Bertleson, Linda
Clark, Pat
Dutcher, Ann
Helms, Julie
Jones, Janie
McMillan, Kate

BILLINGS—WEST
Breshears, Kay
Grasshuesch, Cheryl
Larson, Margaret
Roberts, Jane
Torgerson, Annette
Verhelst, Peggy

BOZEMAN
Cass, Betty
Gullickson, Jeri

CUSTER COUNTY
Albrecht, Judy
Brown, Joan
Bergusson, Carol

FLATHEAD COUNTY
Madsen, Vicki
McLeod, Sharon
Norden, Janet
Ramsey, Marie
Robinson, Peggy

GREAT FALLS
Affelstein, Linda
Womsley, Diane

GT. FALLS CENTRAL
Heffern, Mary
O'Connor, Anita
Zabrocki, Betty

HAMILTON
Bostrom, Nancy
Gandera, Virginia
Hitchcott, Janet
Howe, Patty
Jones, Cheryl

HAMILTON—continued
Osborn, Karen
Stonner, Susan

HELENA
Cougill, Candence
Huffman, Jeri
Morgan, Mikal
Reynolds, Francie

MISSOULA COUNTY
Bergstrom, Sue
Bue, Janet
DeMers, Kay
Hansas, Diane

MISSOULA—continued
Hoon, Janice
Rafferty, Shirley
Sayer, Jeanette

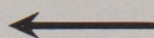
**SACRED HEART
ACADEMY—MISSOULA**
Gjording, Cecelia
Hartsell, Joan
Honzel, Gretchen
Schriver, Joice
Thompson, Julie

SHELBY
Leavitt, Dennise
Sheridan, Geraldine



↑ PARADE
OF
ATHLETES

THE
JUDGE'S
STAND



Program of Track and Field Events ...

Unless specifically indicated otherwise in the program, preliminary races shall be run in the following order: Class C, B, A and AA. Where no more than ten contestants from any class are entered in a running event, no trials or preliminary heats shall be run.

FRIDAY, MAY 25, 1:10 P.M.

Parade of Athletes

Trials, 100-yard dash—Classes B and C

Trials, 120-yard high hurdles—Classes B and C

Trials, 440-yard run—Classes B and C

Final, Mile Run—Classes B and C

Trials, 220-yard dash—Classes B and C

Final, 880-yard run—Classes AA and A

Trials, 180-yard low hurdles—Classes B and C

Trials, 880-yard relays—Classes B and C

Finals in the Class B and Class C pole vault and in the Class AA and Class A high jump will be held concurrently with the running events.

Trials in the following field events will be held with participants competing in flights. Class B and Class C discus throw (on practice field north of Dornblaser Field). Class AA and Class A shot put, Class B and Class C javelin throw and Class AA and Class A broadjump (all on Dornblaser field), followed by Class B and Class C shotput, Class AA and Class A javelin throw, Class B and Class C broadjump (all on Dornblaser Field), and Class AA and Class A discus throw (on practice field north of Dornblaser Field).

SATURDAY, MAY 26, 1:00 P.M.

Finals, 100-yard dash

Finals, 120-yard high hurdles

Finals, 440-yard run

Final, Mile run, Class AA

Final, Mile run, Class A

Final, 880-yard run, Class B

Final, 880-yard run, Class C

Finals, 180-yard low hurdles

Finals, 880-yard relays. (All relays will be run in lanes with staggered starts and on comparative time basis if there are more than five teams in any class).

Finals of the Class AA and Class A pole vault and Class B and Class C high jump will be held concurrently with the running events.

Finals of the weight throwing events and the broad-jump will be as follows: Class AA broad jump, Class A shot put, and Class B and Class C discus throw; followed by Class AA shot put, Class A discus throw, and Class B and Class C broad jump; followed by Class AA discus throw, Class A broad jump, and Class B and Class C shot put; followed in order by the Class B and Class C, Class A, and Class AA javelin throw.

The Committee reserves the right to qualify more contestants than the above calls for, and to eliminate any semi-final found to be unnecessary.

All 440, 880 and mile races will be started at the head of the straightaway (thus eliminating the first turn.)

EVERYTHING NEW IN FASHION
AT THE NEW, YES ALL NEW

Buttreys
Fashion Shop

In Downtown Missoula

Best Schools and Individual Performances, 1961 . . .

CLASS AA: Billings Senior, 69 points; Lawrence Questad, Livingston, 18 points.

CLASS A: Custer County, 47 1/6 points; Tom Coombs, Custer County, 19 1/3 points.

CLASS B: Loyola (Missoula), 33 1/2 points; Ronald Plummer, Loyola, 15 points.

CLASS C: Troy, 26 points; Ed Hewett, Troy, 16 points.

Montana Interscholastic Track and Field Records . . .

Event	Reccrd	Holder	Year
100-yard dash.....	9.6.....	Lawrence Questad, Livingston	1961
220-yard dash.....	21.0.....	Lawrence Questad, Livingston	1961
440-yard dash.....	49.9.....	Frank Damaskos, Missoula	1957
880-yard dash.....	1:57.2.....	Mike Stark, Polson	1961
Mile run.....	4:25.1.....	Doug Brown, Red Lodge	1961
High hurdles.....	14.8.....	Don McAuliffe, Butte	1948
Low hurdles.....	19.6.....	Conrad Orr, Missoula	1953
	19.6.....	Lawrence Questad, Livingston	1961
Pole vault.....	12' 10".....	Walt Custer, Missoula	1930
Javelin throw.....	203' 8 3/4".....	Ken Christison, Kalispell	1960
Shot put.....	56' 6 3/4".....	Jerry Fitzsimmons, Butte	1960
Discus throw.....	165'.....	Nate Edington, Butte	1960
High jump.....	6' 6 1/2".....	Mike Huggins, Kalispell	1960
Broad jump.....	22' 8 1/8".....	Ken Nelson, Missoula	1955
880 relay.....	1:31.1.....	(Boone, Lewis, Danielson, Drinville; Missoula).....	1958

Welcome Visitors! We hope you enjoy the meet

**MOUNTAIN STATES TELEPHONE
AND TELEGRAPH CO.**

CLASS AA

ANACONDA

1. Jackson, Tom
2. Martin, Fred
3. Stohr, Stan
4. Ulstad, Sam
5. Wilkinson, Terry

BILLINGS SR.

6. Anderson, Mack
7. Beaton, Jim
8. Bresnahan
9. Brickley, Dick
10. Dailey, Bruce
11. Dobbins, Mick
12. Garris, Luther
13. Green, Doug
14. Hendrickson, Orval
15. Hutton, Rick
16. Kinne, Mike
17. Montague, Dave
18. Nelson, Paul
19. Price, Charlie
20. Schnad, Ken
21. Shaver, Jim

BILLINGS WEST

22. Bell, Gary
23. Brunsvold, Ken
24. Cole, Rick
25. Hamilton, Jim
26. Hill, Warren
27. Kirkland, George

BILLINGS WEST—continued

28. Loinberger, Jim
29. Scheel, Bob
30. Smith, Jack
31. VanGiesen, Bob

BUTTE CENTRAL

32. Barry, Creighton
33. Crowley, Mike
34. Leary, Pat
35. O'Neil, Dan
36. Ueland, Ron

BUTTE PUBLIC

37. Allen, Gene
38. Carpino, Clyde
39. Cochrane, Terry
40. Eaton, John
41. Fraser, Bill
42. Given, Bob
43. Hawke, Bob
44. Hodge, Dan
45. Hyyppa, Jack
46. Johnson, Ron
47. Johnstone, Mel
48. Koskimacki, Dave
49. Lamiaux, Jerry
50. Latham, Roger
51. McMeekin, John
52. Potter, Jack
53. Webber, Blaine

FLATHEAD COUNTY

54. Aronow, Fred
55. Bain, Frank
56. Hoyem, Dennis
57. Mosbarger, Ken
58. Quande, Bruce

GREAT FALLS

59. Davis, Gary
60. Fairhurst, Bill
61. Hill, Rick
62. Jackson, Dale
63. Kelley, Larry
64. McIntosh, John
65. Moncrief, Rehn
66. Moran, Ken
67. O'Brien, Mike
68. Schlenake, Ronald
69. Shafer, Fred
70. Sowers, Ron
71. Taskila, Lynn

HELENA

72. Barrett, Roger
73. Coltrane, Bob
74. Coltrane, Gary
75. Eathorne, Gary
76. Hanson, Earl
77. Jorgenson, Paul
78. Kovick, Rod
79. Lane, Bob
80. Swanberg, Steve
81. Tobol, Dave
82. Ursich, Larry
83. Vollertson, Rod
84. Weiss, Tom

MISSOULA COUNTY

85. Bailey, Lonnie
86. Brown, Ted
87. Hangan, Dave
88. Hefty, Eric
89. Hill, Roger
90. Huggins, Larry
91. Jones, Ken
92. Lewis, Mike
93. McDonald, Gary
94. Meath, Don
95. Schmitz, Don
96. Smith, Glenn
97. Staiger, Wade
98. Tabish, Ron
99. Ward, Bob
100. Youngquist, Don

CLASS A

BILLINGS CENTRAL

101. Birrer, Eddie
102. Boyle, Mike
103. Closter, Ron
104. Gosich, Jim
105. Magers, Paul
106. Mathern, Ron
107. Reid, John
108. Seitz, Tom
109. Seitz, Tony
110. Staid, Paul

BOZEMAN

111. Cromer, Don
112. Gum, Bill
113. Johnstone, Bill
114. Miller, Bob
115. Nuber, Jim

GLASGOW

116. Bjorklund, Andy
117. Bjorklund, Randy
118. Crowley, Jim
119. Etchart, John
120. Gardner, Larry
121. Hancock, Bob
122. Landes, Bob
123. Lanfsdorf, Ed
124. Nixdorf, Dennis
125. Taylor, Roy

DAWSON COUNTY

126. Baldeck, Corky
127. Beddow, Lew
128. Hass, Don
129. Jimison, Jerry
130. Weinberger, Bob

GREAT FALLS CENTRAL

131. Barry, Fred
132. Bulger, Chris
133. Gilligan, John
134. Murray, Bob
135. O'Hare, Tim
136. Restelli, Bill
137. Sprinkle, Bill
138. Warren, Dean
139. Wolfe, Sim

HARDIN

140. Fitzpatrick, J.
141. Hill, Darrell
142. Seekins, Ralph
143. Spomer, Therman
144. Steen, John
145. Three Irons, Dan

HAVRE

146. Curtiss, Larry
147. Gorseth, Lowell
148. Havskjold, Glenn
149. Heberley, John
150. Lippy, Harry
151. Nelson, Dan

LAUREL

152. Armstrong, Lance
153. Diede, Tim
154. Fukado, Terry
155. Gradwohl, Mike
156. McManus, Mark
157. Moline, Larry
158. Nielson, Ron
159. Parker, Tom
160. Weis, David

LEWISTOWN

161. Anderson, Tom
162. Beacham, Wilbert
163. Lannon, Rich
164. McClellan, Ron
165. Oslar, Jerry
166. Rimby, Brad

CUSTER COUNTY

167. Domagala, Jerry
168. Dandas, Don
169. Dundas, Doug
170. Gordon, Tom
171. James, Lee
172. Noltey, Ken
173. Oddy, Larry
174. Sorenson, Dick
175. Stanley, Jay
176. Thompson, Bill

SIDNEY

177. Adler, Dale
178. Boyd, Doug
179. Danielson, Terry
180. Fladmo, Bob
181. Harper, Ron
182. Hartman, Neil
183. Hueth, Gene
184. McDonald, Ken
185. Ness, Jim
186. Quilling, Doug
187. Swigert, Wayne

PARK COUNTY

188. Adams, Merle
189. Harris, David
190. Harris, Stan
191. Horseley, Jack
192. Jackson, Duane
193. Rufus, Dave
194. Smith, Dave
195. Wedel, Larry

CLASS B

ABSAROOKEE

- 196. Bolin, Mike
- 197. Chapman, Brad
- 198. Gerhardt, Randy
- 199. Palass, Walter
- 200. Pederson, Larry
- 201. Schaff, Ron
- 202. Smith, Neal

ANACONDA CENTRAL

- 203. Boyer, Pat
- 204. Connors, Jack
- 205. James, Don
- 206. Moe, Pat
- 207. Molendyke, Bill
- 208. Sullivan, Bill
- 209. Vollmer, Mike

BAKER

- 210. Joyce, Jim
- 211. Sinclair, Roger

BIG SANDY

- 212. Brewer, Jerry
- 213. Clark, Pat
- 214. Drga, Bob
- 215. McNeil, Dan
- 216. Ulmen, Dennis

BIG TIMBER

- 217. Beley, Joe
- 218. Bieken, Tom
- 219. Clark, Rick
- 220. Prather, Jack

BROWNING

- 221. Upham, Ed
- 222. Wagner, Clarence

CHESTER

- 223. Anderson, Allen
- 224. Gillin, Lloyd
- 225. Leighton, Larry
- 226. Peppenger, David
- 227. Shepherd, Rod
- 228. Starke, John
- 229. Ward, Ted

CHINOOK

- 230. Geffrey, Richard
- 231. Peterson, Ted
- 232. Sargent, Greg

CHOTEAU

- 233. Assay, Jerry
- 234. Dale, Ronnie
- 235. Duncel, Larry
- 236. Gollehon, Ron
- 237. Hollar, Bob
- 238. Joramo, Floyd
- 239. Kelley, Terry
- 240. Nesbit, Jack
- 241. Wedum, Neal
- 242. Yeager, Ray

CIRCLE

- 243. Beason, Robert
- 244. Erickson, Robert
- 245. Hoover, Jerry
- 246. Moos, Donald
- 247. Schillinger, Douglas
- 248. Vaughn, Gary

COLUMBIA FALLS

- 249. Bertino, Phil
- 250. Kimsey, Dennis
- 251. Ryan, Pat
- 252. Wright, Howard

COLUMBUS

- 253. Aber, Larry
- 254. Bilden, Dan
- 255. Braley, Rick
- 256. Gentry, Nyle
- 257. Kem, Kenneth
- 258. Murphy, Bob

CONRAD

- 259. Hurley, Jack
- 260. McFarland, Tom
- 261. Senden, Robert
- 262. Syvertson, Gary
- 263. Welker, Tom

CUT BANK

- 264. Boyle, Tom
- 265. Loudermilk, Dick
- 266. Luedtke, Ronnie
- 267. McGlothlin, Lenny
- 268. McGriff, Charles
- 269. Shook, Terry
- 270. Thompson, Rich
- 271. Waller, Don

DILLON

- 272. Burris, Wayne
- 273. Donovan, Jerry
- 274. Dupuis, Dennis
- 275. Ferris, Ed
- 276. Graves, Leon
- 277. Rebish, Ron
- 278. Studwhar, Tom
- 279. Womack, John

EUREKA

- 280. Duffield, Brad
- 281. Schermerhorn, Randy
- 282. Weydemeyer, Bruce

FAIRFIELD

- 283. Ballantine, Norman
- 284. Blossom, Jim
- 285. Davis, Gary
- 286. Hartz, Chuck
- 287. Harz, Jack
- 288. Klinker, Marvin
- 289. Ober, Ben
- 290. Olson, Don
- 291. Shoquist, Mike
- 292. Udin, Allen

FAIRVIEW

- 293. Gardner, Jerry
- 294. Johnson, Collins
- 295. Paschke, Jon
- 296. Swanson, Roger
- 297. Vickers, Vance

FORSYTH

- 298. Donley, Doug
- 299. Friez, Rick
- 300. Harken, Grant
- 301. Rolston, Brian

FORT BENTON

- 302. Fry, Dennis
- 303. Pope, Henry
- 304. Pugh, Roger
- 305. Rowe, Gary
- 306. Rowe, Terry
- 307. Rudin, Jack
- 308. Silvius, Bill

HAMILTON

- 309. Applebury, Terry
- 310. Collins, Bill
- 311. Elmore, Dave
- 312. Fullerton, Doug
- 313. Langley, Wes
- 314. Popiel, Gary

HARLEM

- 315. Farrar, Grant
- 316. Parks, Jesse
- 317. Pipe, Rick
- 318. Tangen, Gary

HARLOWTON

- 319. Blaquiére, Dave
- 320. Blumer, John
- 321. Bridges, Joel
- 322. Franks, Bob
- 323. Fochs, Calvin
- 324. Goodman, Darrol
- 325. Hiner, Bill
- 326. Watson, Sandy

HELENA CATHEDRAL

- 327. Blessinger, Ricky
- 328. McCarthy, Mike
- 329. Roberts, Dean
- 330. Ronan, Bob

HUNTLEY PROJECT

- 331. Brady, Tom
- 332. Kramer, Ed

LIBBY

- 333. Anderson, Ron
- 334. Browne, Sam
- 335. Gehring, Ed
- 336. Hill, Dave
- 337. Hoss, Bob
- 338. Lampton, Don
- 339. Moles, Les
- 340. Starry, Jim
- 341. Stephens, Walt
- 342. Tushaus, John
- 343. Vaughn, Ben
- 344. Vaughn, Jerry

LOYOLA

- 345. Ballas, Jerry
- 346. Brooke, Mike
- 347. Brooke, Pat
- 348. Burns, John
- 349. Hogan, Steve
- 350. Hanzel, Tom
- 351. Joseph, Dick
- 352. Marinar, Tom
- 353. McKay, Don
- 354. Nelson, Mike
- 355. Pilcher, Ron
- 356. Roifler, Steve
- 357. Scheffer, Pete
- 358. Steiner, Ed
- 359. Tripp, Gene
- 360. Williams, Steve

MALTA

- 361. Adam, Connie
- 362. Goodheart, Dennis
- 363. Kaufman, Gary
- 364. Kron, Bruce
- 365. Lefdahl, Regan
- 366. Mann, Martin
- 367. Molloy, Dan
- 461. Molloy, Don
- 368. Newton, Art
- 369. Row, John
- 370. Skinner, Dennis
- 371. Wiederrick, Ross

NASHUA

- 372. O'Connor, Pat

PLENTYWOOD

- 373. Kaip
- 374. Ketterman
- 375. Larson

POLSON

- 376. Carpenter, Gary
- 377. Farrell, Tom
- 378. Gipe, Ronald
- 379. Holmes, Mike
- 380. Howell, Pete
- 381. Miller, Greg
- 382. Newell, Tracy
- 383. Normandeau, Ronnie
- 384. Smith, Kieth
- 385. Stark, Mike
- 386. Thomas, Mark

CLASS B—continued

POPLAR

- 387. Atkinson, Tom
- 388. Fields, Bill
- 389. Hill
- 390. Kasto, Alie
- 391. Prescott, David
- 392. Schindele, John
- 393. Szmanski, John
- 394. Zimmerman, Bill

POWELL COUNTY

- 395. Beck, Ralph
- 396. Bennett, Bob
- 397. Bielenberg, Nick
- 398. Dentaon, Steve
- 399. Enger, Dave
- 400. Farquchar, John
- 401. Hamblin, Bruce
- 402. Krutar, Jon
- 403. Sexton, Jim
- 404. Suda, Bill

RED LODGE

- 405. Alberi, Mike
- 406. Armstrong, Ken
- 407. Brophy, Bob
- 408. Brown, Doug
- 409. Hyvonen, Randy
- 410. Jovanovich, Gary
- 411. Lodge, Jon
- 412. Lutz, Dennis
- 413. Persha, Mike
- 414. Priki, Ronald
- 415. Ransdell, Jerry
- 416. Ridl, Richard

RONAN

- 417. Bellen, Elbie
- 418. Cheff, Ed
- 419. Cheff, Roger
- 420. White, Frank

ROUNDUP

- 421. Jens, Scott
- 422. Kuni, Jon

SCOBEY

- 423. Downs, John
- 424. Veis, Terry

SHELBY

- 425. Barger, Larry
- 426. Brady, Ken
- 427. Neilson, Jim
- 428. Nevin, Charles
- 429. O'Hara, Gene
- 430. Seeley, Roger
- 431. Selley, Roger

ST. IGNATIUS

- 432. Blackman, Gary
- 433. Phillips, Ronnie
- 434. Schmauch, Bud

STEVENSVILLE

- 435. Wade, Tom

SUNBURST

- 436. Mauritsen, Pete

THOMPSON FALLS

- 437. Campbell, Urcle
- 438. Duffield, John
- 439. Franke, Walter

VALIER

- 440. Henneman, Doug
- 441. Kuka, Bill

WHITEFISH

- 442. Lamberson, John
- 443. Lodinoff, Leroy
- 444. Pettis, Jim
- 445. Shiffman, Bill
- 446. Voermans, Bill

WOLF POINT

- 447. Ahlberg, Allen
- 448. Beery, Jim
- 449. Dalger, Leroy
- 450. Ediger, Ray
- 451. Fast, Don
- 452. Fast, Gary
- 453. Longigar, Don
- 454. Loendorf, Greg
- 455. Lucas, Merle
- 456. Parsley, Bob
- 457. Parsley, Dave
- 458. Pipe, Dick
- 459. Presser, Walt
- 460. Welzenback, Tony

CLASS C

ALBERTON

- 462. DeWald, Bob

ANTELOPE

- 463. Ottenbreitt, Rodney

ARLEE

- 464. Charlo, Neil
- 465. Couture, Chuck
- 466. Irvine, Lloyd
- 467. Matt, Ron
- 468. Park, Jerry

AUGUSTA

- 469. Barrett, Ed
- 470. Tuomi, Jay

BAINVILLE

- 471. Giese, Gene
- 472. Hanson, Richard
- 473. LaCounte, Larry
- 474. Portra, Terry

BELGRADE

- 475. Karinen, Dallas
- 476. Verwolf, Tom

BELT

- 477. Gies, Bob

BRADY

- 478. Dyer, Gary

BRIDGER

- 479. Boyer, Glenn
- 480. Candlin, Lee

CASCADE

- 481. Flechsenhar, Bill
- 482. Peterson, Bud

CLYDE PARK

- 483. Gilbert, Phil
- 484. Little, Archie

COLSTRIP

- 485. Harris, Raymond
- 486. HiWalker, Weaver
- 487. Limberhand, Dennis
- 488. Waples, Russell

CORVALLIS

- 489. Filcher, Jack
- 490. Norbeck, Luther
- 491. Wolfinbarger, Jim

CULBERTSON

- 492. Bjorge, Dale

DARBY

- 493. Bergren, Terry
- 494. Connor, Mike
- 495. Matteson, Mike
- 496. McKinney, Mick
- 497. Palin, Curney
- 498. Wilkerson, John
- 499. Wolfinbarger, Phil

DENTON

- 500. Best, Russ
- 501. Ridgeway, Jerry

DIXON

- 502. Clairmont, Jim

DUTTON

- 503. Becker, Jack
- 504. Clottelter, Jim
- 505. Odden, Mick
- 506. Schultz, Warren
- 507. Trebesch, Dick

EDGAR

- 508. Frank, Marvin
- 509. Kelly, Bob

ENNIS

- 510. Lueck, Dave

FLORENCE

- 511. Holmes, Dennis
- 512. Ogden, Ron

FRAZER

- 513. Walton, Jay

FROMBERG

- 514. Krug, Bruce

GERALDINE

- 515. Hankins, Roy

GILDFORD

- 516. Cady, Gary
- 517. Borloug, Monty
- 518. Hanson, Dick

GRANITE

- 519. Degenhart, Clint

GRASS RANGE

- 520. Gerdum, Ron
- 521. Ille, Ken

HOT SPRINGS

- 522. Carr, Frank
- 523. Franklin, Mike
- 524. Santas, Ray
- 525. Stellmon, Larry

HIGHWOOD

- 526. Lander, Don

HOBSON

- 527. Dirkson, Ken
- 528. Gore, Gary
- 529. Hritsco, George
- 530. Swanz, John

HOLY ROSARY

- 531. Noyes, Dave

CLASS C—continued

HYSHAM

532. McPhail, Randy

INDUSTRIAL SCHOOL

533. Doney, Warren
534. Hernandez, Vio
535. Spint, Mike

INVERNESS

536. Bangs, Collin
537. Evans, Roger

JOLIET

538. Jarussi, Frank
539. Jarussi, Louie
540. Kastalitz, Randy
541. Parkins, Evan

JOPLIN

542. Martinson, Larry

JORDAN

543. Euell, Rubie
544. Uthag, Gary

KREMLIN

545. Johnson, Duane

LAVINA

546. Nelson, Arthur

MANHATTAN

547. Cooper, Stuart
548. DeBore, Doug
549. Dornboss, Clarence
550. Dornboss, Don
551. Jensen, Carl

MEDICINE LAKE

552. Duebner, Roy
553. Heggum, Jerry
554. McCabe, Rodney

MOORE

555. Martin, Bob

OPHEIM

556. Donavon, Victor
557. Putnam, Lynn

PARK CITY

558. Fink, Wayne
559. Leikam, Larry
560. McFatey, Mike
561. Rash, Eldon
562. Simons, Richard

PLAINS

563. Copp, Bob

PLEVNA

564. Hoque, Don

POWER

565. Keel, George
566. Loftsgaarden, Lloyd
567. Millinger, Clarence
568. Neuman, Ted
569. Toenyas, John
570. Williams, Dennis

RAPELJE

571. Herzog, Donnie
572. Kramer, Jim

RICHEY

573. Hafele, Tom
574. Keeland, Richard
575. Schwartz, Arden

ROBERTS

576. Hanni, Ron

ROSEBUD

577. Hubbard, Dennis
578. Lopez, Augie

ROY

579. Jordan, Larry
580. Walrod, Jim

RUDYARD

581. Carr, Jim

SACRED HEART, MILES CITY

582. Benasky, Don
583. Cadlo, Tony
584. Jerrell, Larry
585. Russell, Ross

SAVAGE

586. Conradsen, Conrad
587. Drury, Harold
588. Hagler, Leland
589. Miller, Gary
590. Miller, Leroy
591. Price, Don

SHEPARD

592. Kinghorn, Ralph
593. McCartney, Don
594. Nafts, Ray
595. Smith, Brad
596. West, Vernon

SHERIDAN

597. Bock, Eugene
598. Marsh, Dan
599. Sagunsky, Byron
600. Shaw, Ray
601. Wright, Bob

SIMMS

602. Baker, Bob
603. Duncan, Gary
604. Hanson, Dick
605. Nash, Howard
606. Walt, Ken

STANFORD

607. Mittler, Jan
608. Miller, Bill

ST. LABRE

609. Foote, Richard

ST. LEO'S

610. Fordyce, John

ST. REGIS

611. Dahl, Don
612. Taylor, Jim

SUMATRA

613. Hecker, Arthur

SUPERIOR

614. Alexander, Larry
615. Strom, Odie
616. Walle, Tuck
617. Warnken, Dwight
618. Wickstrom, Bill

TERRY

619. Buckingham, Doug
620. Ensign, Gary
621. Friebboth, Lane
622. Jasperson, Don
623. Ruether, Roddy
624. Smalis, Jerry
625. Tibbetts, Ron
626. Tusler, Harold

THREE FORKS

627. Lane, Joe
628. Murray, Greg

TOWNSEND

629. Gravely, Charles
630. Massa, Dean
631. McElwee, Bob
632. Ulmer, John
633. Wallace, Charles

TWIN BRIDGES

634. Gonzales, Johnnie
635. Nydam, Chris
636. Romero, Leroy

VICTOR

637. Simonsen, Marvin

WESTBY

638. Nordhagen, Arnie

WHITEHALL

639. Allen, Wayne
640. Binet, Bill
641. Brookie, Tom

WILLOW CREEK

642. Covey, Bill

WINIFRED

643. Arthur, Don
644. Phillips, Dwight
645. Udelhoven, Larry

Score Card

100-YARD DASH

1961 Winners—School

	Time
AA—Lawrence Questad, Livingston	9.6
A—Tate, Hardin	10.0
B—Ronald Plummer, Loyola of Missoula	10.0
C—Henke, Medicine Lake	10.4

Record by:
Lawrence Questad,
Livingston, 1961
Time: 9.6

FINALS

Class AA—Time.....	Class A—Time.....	Class B—Time.....	Class C—Time.....
1.....	1.....	1.....	1.....
2.....	2.....	2.....	2.....
3.....	3.....	3.....	3.....
4.....	4.....	4.....	4.....
5.....	5.....	5.....	5.....

220-YARD DASH

1961 Winners—School

	Time
AA—Lawrence Questad, Livingston	21.0
A—Lloyd, Great Falls Central	21.8
B—Ronald Plummer, Loyola of Missoula	22.2
C—Cripe, Troy	23.4

Record by:
Lawrence Questad,
Livingston, 1961
Time: 21.0

FINALS

Class AA—Time.....	Class A—Time.....	Class B—Time.....	Class C—Time.....
1.....	1.....	1.....	1.....
2.....	2.....	2.....	2.....
3.....	3.....	3.....	3.....
4.....	4.....	4.....	4.....
5.....	5.....	5.....	5.....

440-YARD DASH

1961 Winners—School

	Time
AA—O'Leary, Butte Central	50.4
A—Three Irons, Hardin	51.8
B—Dan Baretta, Red Lodge	51.1
C—Ed Hewett, Troy	51.7

Record by:
Frank Damaskos,
Missoula, 1957
Time: 49.9

FINALS

Class AA—Time.....	Class A—Time.....	Class B—Time.....	Class C—Time.....
1.....	1.....	1.....	1.....
2.....	2.....	2.....	2.....
3.....	3.....	3.....	3.....
4.....	4.....	4.....	4.....
5.....	5.....	5.....	5.....

880-YARD RUN

1961 Winners—School

	Time
AA—Lockie, Billings	1:58.7
A—Three Irons, Hardin	2:00
B—Mike Stark, Polson	1:57.2
C—Rittel, Terry	2:03.3

Record by:
Mike Stark,
Polson, 1961
Time: 1:57.2

FINALS

Class AA—Time.....	Class A—Time.....	Class B—Time.....	Class C—Time.....
1.....	1.....	1.....	1.....
2.....	2.....	2.....	2.....
3.....	3.....	3.....	3.....
4.....	4.....	4.....	4.....
5.....	5.....	5.....	5.....

ON-MILE RUN

1961 Winners—School

	Time
AA—Lockie, Billings	4:40.3
A—Turcotte, Billings	4:35.0
B—Doug Brown, Red Lodge	4:25.1
C—Harris, Colstrip	4:40.3

Record by:
Doug Brown,
Red Lodge, 1961
Time: 4:25.1

FINALS

Class AA—Time.....	Class A—Time.....	Class B—Time.....	Class C—Time.....
1.....	1.....	1.....	1.....
2.....	2.....	2.....	2.....
3.....	3.....	3.....	3.....
4.....	4.....	4.....	4.....
5.....	5.....	5.....	5.....

120-YARD HIGH HURDLES

1961 Winners—School

	Time
AA—McIntosh, Great Falls	14.9
A—Coombs, Miles City	15.3
B—Cliff Neighbor, Harlowton	14.9
C—Dan French, Plains	15.0

Record by:
D. McAuliffe, Butte Public,
1949.
Time: :14.8.

FINALS

Class AA—Time.....	Class A—Time.....	Class B—Time.....	Class C—Time.....
1.....	1.....	1.....	1.....
2.....	2.....	2.....	2.....
3.....	3.....	3.....	3.....
4.....	4.....	4.....	4.....
5.....	5.....	5.....	5.....

180-YARD LOW HURDLES

1961 Winners—School

AA—Lawrence Questad, Livingston	19.6
A—Coombs, Miles City	20.4
B—Cliff Neighbor, Harlowton	20.2
C—Ed Hewett, Troy	20.4

Time

Record by:

Conrad Orr, Missoula, 1963,
Time: :19.6.

Record was tied by Lawrence
Questad, Livingston, 1961
Time: 19.6

FINALS

Class AA—Time.....	Class A—Time.....	Class B—Time.....	Class C—Time.....
1.....	1.....	1.....	1.....
2.....	2.....	2.....	2.....
3.....	3.....	3.....	3.....
4.....	4.....	4.....	4.....
5.....	5.....	5.....	5.....

SHOT PUT

1961 Winners—School

AA—Wayne Estes, Anaconda	56' 4½"
A—McFadden, Great Falls Central	49' ½"
B—Micholson, Malta	51' 2¾"
C—Shields, Plains	49' 7"

Distance

Record by:

Jerry Fitzsimmons,
Butte Public, 1960
Distance: 56' 6¾"

FINALS

Class AA—Distance.....	Class A—Distance.....	Class B—Distance.....	Class C—Distance.....
1.....	1.....	1.....	1.....
2.....	2.....	2.....	2.....
3.....	3.....	3.....	3.....
4.....	4.....	4.....	4.....
5.....	5.....	5.....	5.....

JAVELIN THROW

1961 Winners—School

AA—Husband, Billings	190' 10"
A—Terry Marks, Hardin	177' 5"
B—Tushaus, Libby	192' 11"
C—Franklin, Hot Springs	192' 10"

Distance

Record by:

Ken Christison,
Kalispell, 1960
Distance: 203' 8¾"

FINALS

Class AA—Distance.....	Class A—Distance.....	Class B—Distance.....	Class C—Distance.....
1.....	1.....	1.....	1.....
2.....	2.....	2.....	2.....
3.....	3.....	3.....	3.....
4.....	4.....	4.....	4.....
5.....	5.....	5.....	5.....

DISCUS THROW

1961 Winners—School

	Distance
AA—Wayne Estes, Anaconda	155' 7¼"
A—Lersbach, Glasgow	141' 10"
B—Derienfield, Huntley Project	153' 3½"
C—Engler, Corvallis	141' 4½"

Record by:

Nate Edington,
Butte Public, 1960.
Distance: 165'

FINALS

Class AA—Distance.....	Class A—Distance.....	Class B—Distance.....	Class C—Distance.....
1.....	1.....	1.....	1.....
2.....	2.....	2.....	2.....
3.....	3.....	3.....	3.....
4.....	4.....	4.....	4.....
5.....	5.....	5.....	5.....

HIGH JUMP

1961 Winners—School

	Height
AA—Hunkins, Billings	6' 1"
A—Malstrom, Billings Central; Coombs and Dundas, Miles City.....	6' 1"
B—Vinion, Libby	5' 10"
C—Bock, Sheridan	6' 2"

Record by:

Mike Huggins, Flathead,
1960. Height: 6' 6½"

FINALS

Class AA—Height.....	Class A—Height.....	Class B—Height.....	Class C—Height.....
1.....	1.....	1.....	1.....
2.....	2.....	2.....	2.....
3.....	3.....	3.....	3.....
4.....	4.....	4.....	4.....
5.....	5.....	5.....	5.....

BROAD JUMP

1961 Winners—School

	Distance
AA—Fry, Billings	21' 11½"
A—Tate, Hardin	21' 11½"
B—Seely, Shelby	21' 7½"
C—Lueck, Ennis	21' 8"

Record by:

Ken Nelson,
Missoula, 1955,
Distance: 22' 8½"

FINALS

Class AA—Distance.....	Class A—Distance.....	Class B—Distance.....	Class C—Distance.....
1.....	1.....	1.....	1.....
2.....	2.....	2.....	2.....
3.....	3.....	3.....	3.....
4.....	4.....	4.....	4.....
5.....	5.....	5.....	5.....

POLE VAULT

1961 Winners—School

	Height
AA—Putnam, Missoula	12' 5"
A—Dunsling, Glendive	11' 6"
B—Pederson, Absarokee; Ferdima, Wolf Point	11' 6"
C—Park, Arlee; Buckles, Boulder	11' 6"

Record by:

Walter Custer,
Missoula, 1930,
Height: 12' 10".
(Oldest Interscholas-
tic record)

FINALS

Class AA—Height.....	Class A—Height.....	Class B—Height.....	Class C—Height.....
1.....	1.....	1.....	1.....
2.....	2.....	2.....	2.....
3.....	3.....	3.....	3.....
4.....	4.....	4.....	4.....
5.....	5.....	5.....	5.....

880-YARD RELAY RACE

1961 Winners—School

	Time
AA—Billings	1:31.8
A—Great Falls Central	1:34.0
B—Loyola (Missoula)	1:33.2
C—Corvallis	1:36.4

Record by: Missoula (Boone,
Lewis, Danielson, Drinville),
1958. Time: 1:31.1.

FINALS

Class AA—Time.....	Class A—Time.....	Class B—Time.....	Class C—Time.....
1.....	1.....	1.....	1.....
2.....	2.....	2.....	2.....
3.....	3.....	3.....	3.....
4.....	4.....	4.....	4.....
5.....	5.....	5.....	5.....

Suntan Lotions — Crazy Hats

Sunglasses — Movie Film

Novelty Merchandise

Downtown Missoula's Largest

SAVE — ON — DRUG

SCORE CARD

NOTE—Score 6 points for first place, 4 for second place, 3 for third place, 2 for fourth place, 1 for fifth place, including relay.	100-yard Dash	220-yard Dash	440-yard Dash	880-yard Run	One Mile Run	Discus Throw	Pole Vault	High Jump	Broad Jump	120-yard Hurdles	180-yard Hurdles	Shot Put	Javelin Throw	Relay Race	TOTAL
CLASS AA															
Anaconda.....															
Billings Senior.....															
Billings West.....															
Butte Central.....															
Butte Public.....															
Flathead County (Kalispell).....															
Great Falls.....															
Helena.....															
Missoula.....															
CLASS A															
Billings Central.....															
Bozeman.....															
Glasgow.....															
Dawson County (Glendive).....															
Great Falls Central.....															
Hardin.....															
Havre.....															
Laurel.....															
Lewistown.....															
Custer County (Miles City).....															
Sidney.....															
Park County (Livingston).....															
CLASS B															
Absarokee.....															
Anaconda Central.....															
Baker.....															
Big Sandy.....															
Big Timber.....															
Browning.....															
Chester.....															
Chinook.....															
Choteau.....															
Circle.....															
Columbia Falls.....															
Columbus.....															
Conrad.....															
Cut Bank.....															
Dillon.....															
Eureka.....															
Fairfield.....															
Fairview.....															
Forsyth.....															
Fort Benton.....															
Hamilton.....															
Harlem.....															
Harlowton.....															
Helena Cathedral.....															
Red Lodge.....															
Ronan.....															
Roundup.....															
Scobey.....															
Shelby.....															
St. Ignatius.....															
Stevensville.....															
Sunburst.....															
Thompson Falls.....															
Valier.....															

SCORE CARD—(Continued)

NOTE—Score 6 points for first place, 4 for second place, 3 for third place, 2 for fourth place, 1 for fifth place, including relay.

[illegible]

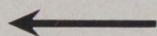
The Record Holders ...



440-YARD DASH

FRANK DAMASKOS

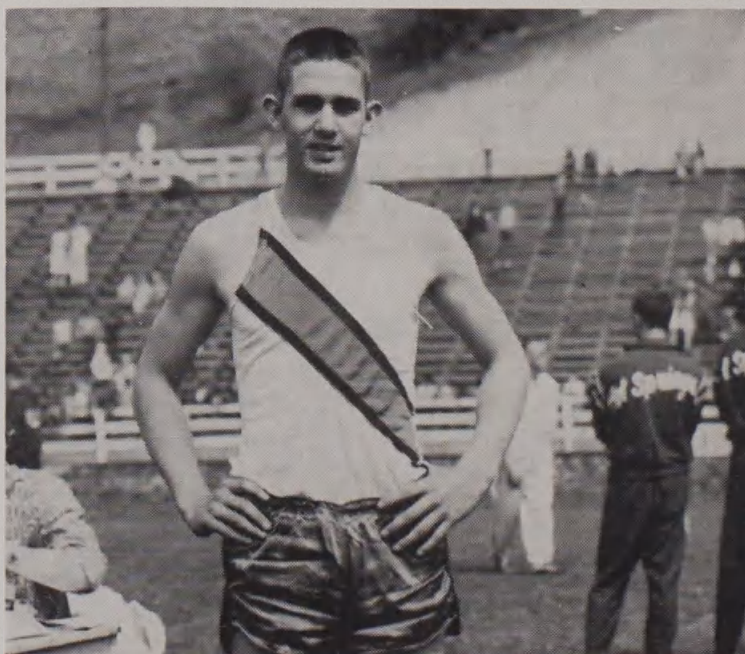
Missoula, 1957



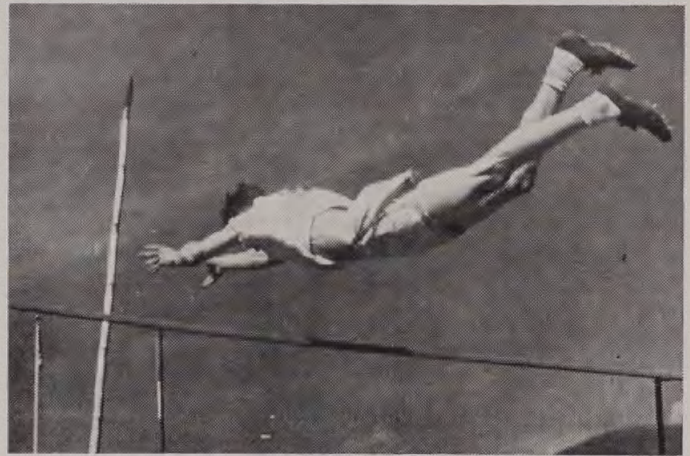
HIGH JUMP

MIKE HUGGINS

↓
KalisPELL, 1960



The Record Holders ...



↑ **POLE VAULT**
WALT CUSTER,
Missoula, 1930

**100- AND 220-
YARD DASHES**
LAWRENCE QUESTAD,
Livingston, 1961



The Fastest Runner of Them All ...

Flowers Wired Anywhere —

Rely On Us for Speedy Delivery!



GARDEN CITY FLORAL

Hotel Florence Building

The Record Holders ...



LOW HURDLES

CONRAD ORR,

Missoula, 1951

(Tied by Lawrence
Questad, Livingston,
1961)



50 YEARS OF SERVICE

The Best in Savings and Home Loan Services

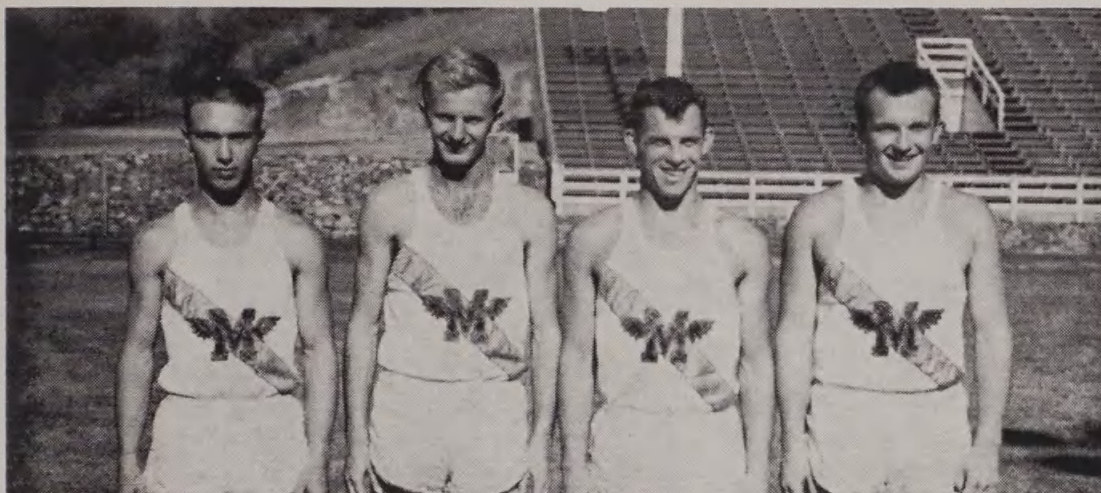
WESTERN MONTANA BUILDING AND LOAN

"Montana's Largest Savings Association"

Savings Center Building

Missoula, Montana

The Record Holders ...



↑ HALF MILE RELAY

LARRY LEWIS
CHUCK DRINVILLE
BRUCE DANIELSON
TOM BOONE,
Missoula, 1958

SHOT PUT

JERRY FITZSIMMONS,
Butte, 1960



Stop! at **CHARLIE'S UPTOWN**

For Fine Food and Service and
Look Over Our Wide Selection of Tobacco

122 West Main

The Record Holders ...



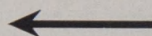
MILE RUN

DOUG BROWN,
Red Lodge, 1961



DISCUS THROW

NATE EDINGTON,
Butte, 1960



FILM FINISHED FAST

SEVEN-HOUR DEVELOPING AND PROCESSING

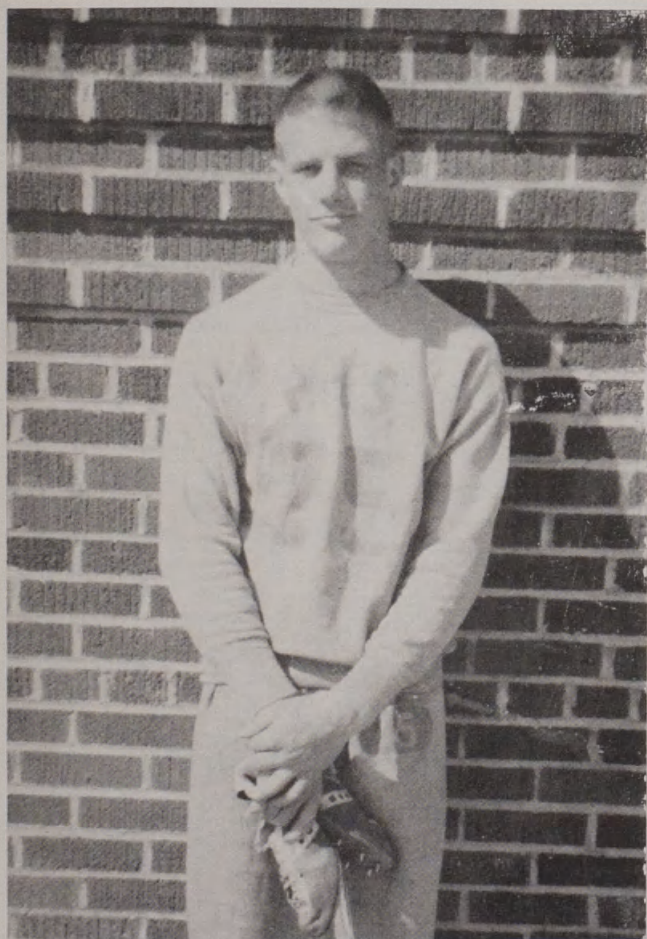
BLACK-AND-WHITE—In before 10 a.m., ready by 5 p.m.

EKTACHROME—In before 9 a.m., ready by 5 p.m.

MISSOULA DRUG COMPANY

We're open at 8 a.m. Monday through Saturday . . . you can drop films to be finished in our special box on the front door at any time, day or night.

The Record Holders ...



CHIMNEY CORNER RESTAURANT

Campus Eating Spot

1025 Arthur Ave.

Just West of the Campus

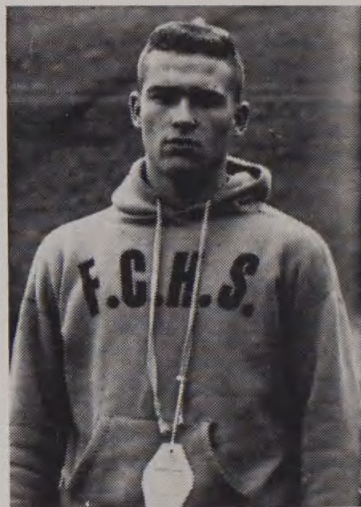


↑ **BROAD JUMP**
KEN NELSON,
Missoula, 1955



880-YARD RUN
MIKE STARK,
Polson, 1961

The Record Holders ...



↑ **JAVELIN THROW**
KEN CHRISTISON,
Kalispell, 1960

HIGH HURDLES
DON McAULLIFFE,
Butte, 1948



Welcome Visitors

When You Think of Clothes, it's



Visit Our New
111 SHOP, lower level

111 E. Main

CIRCLE BAR "S" CAFE

"Big Boy Burgers"

Shakes and Malts

Breakfast Lunch Dinner

1275 W. Broadway

Top Performances by Divisions...

(Note: The following are the best records through the years in each of the four track divisions of the Interscholastic. State records are marked by astericks).

CLASS AA

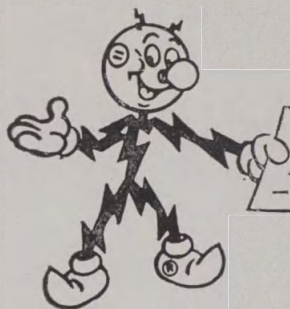
100 Yard Dash.....	9.6	1961	Lawrence Questad	Livingston*
220 Yard Dash.....	21.0	1961	Lawrence Questad	Livingston*
440 Yard Run.....	49.9	1957	Frank Damaskos	Missoula*
880 Yard Run.....	1:58.7	1956	Ray Merwin	Missoula
	1:58.7	1961	Richard Leckie	Billings
Mile Run.....	4:27.6	1945	James Kittell	Missoula
120 High Hurdles.....	14.8	1949	Don McAuliffe	Butte*
180 Low Hurdles.....	19.6	1953	Conrad Orr	Missoula*
	19.6	1961	Lawrence Questad	Livingston*
Shot Put.....	56' 6¾"	1960	Jerry Fitzsimmons	Butte*
Discus Throw	165'	1960	Nathan Edington	Butte*
Javelin Throw	203' 8¾"	1960	Kenneth Christison	Kalispell*
Pole Vault	12' 10"	1930	Walter Custer	Missoula*
Broad Jump	22' 8½"	1955	Kenneth Nelson	Missoula*
High Jump.....	6' 6½"	1960	Mike Huggins	Kalispell*
880 Yard Relay.....	1:31.1	1958	Larry Lewis	Missoula*
			Charles Drinville	
			Charles Nichols	
			Tom Boone	

THE FLORENCE . . . Missoula

America's Finest Motor Hotel

THE HOTEL WITH AN IDEAL

The Florence was conceived with the idea of providing Missoula and Western Montana with not just an ordinary hotel, but an outstanding one with high standards of operation. The recent fine addition—the New Motor Entrance and Pigeon Hole Garage—clearly indicate that the original concept is still the guiding influence. Seasoned travelers are amazed at the fine facilities—both guest room and dining that are available. Make use of them—you also can enjoy the luxury of an outstanding hotel.



*A tax-paying partner
in every community
we serve*

The Montana  **Power Company**

CLASS A (Since 1954)

100 Yard Dash.....	9.9	1960	Ray Opp	Glendive
220 Yard Dash.....	21.8	1961	Joe Lloyd	Great Falls Central
440 Yard Run.....	50.5	1958	Doyle Dotson	Sidney
880 Yard Run.....	2:00.0	1961	Danny Three Irons	Hardin
Mile Run.....	4:35.0	1961	Jim Turcotte	Billings Central
120 High Hurdles.....	15.3	1961	Tom Coombs	Miles City
180 Low Hurdles.....	20.4	1961	Tom Coombs	Miles City
Shot Put.....	49' 8½"	1960	Gene Carlson	Miles City
Discus Throw	149'	1959	Gene Carlson	Miles City
Javelin Throw	190' 3"	1958	Dick Clark	Miles City
Pole Vault	11' 6"	1961	Dan Sundling	Glendive
Broad Jump	21' 11½"	1961	Robert Tate	Hardin
High Jump.....	6' 2"	1956	Mac Wylie	Havre
880 Yard Relay.....	1:33.5	1958	Doyle Dotson	Sidney
			John Marman	
			Ron Quilling	
			Craig Price	



*See the World's Largest Fishing
Tackle Board!*

**Thousands of Items to Choose
from!**

BOB WARD & SONS
321 No. Higgins

The Interscholastic Program

Printed in our plant . . .

Commercial Printing Department

The Missoulian-Sentinel

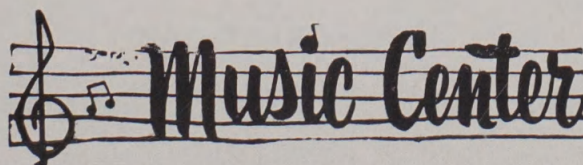
CLASS B (Since 1939)

100 Yard Dash.....	10.....	1961	Ronald Plummer	Loyola
220 Yard Dash.....	22.2	1961	Ronald Plummer	Loyola
440 Yard Run.....	50.5	1959	Bill Lowney	Anaconda Central
880 Yard Run.....	1:57.2	1961	Mike Stark	Polson*
Mile Run.....	4:25.1	1961	Douglas Brown	Red Lodge*
120 High Hurdles.....	14.9	1961	Cliff Neighbor	Harlowton
180 Low Hurdles.....	20.2	1961	Cliff Neighbor	Harlowton
Shot Put.....	55' $\frac{3}{8}$ "	1958	Robert Frisbee	Cut Bank
Discus Throw	153' $3\frac{1}{2}$ "	1961	Douglas Derienfield	Huntley Project
Javelin Throw	192' 11"	1961	John Tushaus	Libby
Pole Vault	12' $2\frac{1}{2}$ "	1954	Roger Hankins	Whitefish
Broad Jump	22' 3"	1959	Jerry Bjork	Harlowton
High Jump.....	6' 3"	1940	Steve Muchmore	Drummond
880 Yard Relay.....	1:32.7	1959	Dave Hedditch	Hamilton
			Gary Spannuth	
			Bill Hettrick	
			Gordon Pagenkopf	

Speaking of Records . . .

We are proud of our stock of current, standard and pop records . . . one of the largest in the Northwest. You'll get personalized attention for all your record needs.

Naturally . . .



Also Holiday Village
310 N. Higgins

Phone 549-4165



TOWN HOUSE RESTAURANT

114 W. Main St.

Missoula, Montana

... HOUSE OF FINE FOODS

... Welcomes you to dine in MISSOULA'S NEWEST and
MOST MODERN RESTAURANT



★ BREAKFAST

FEATURING ★ LUNCHEON

★ DINNERS

★ Steaks cooked to your liking on our "Char Glo Broiler"

★ U. S. Choice Prime Rib of Beef, served daily

Open 7:00 A.M. to 9:00 P.M.

Closed Sundays and Holidays

CLASS C (Since 1956)

100 Yard Dash.....	10.0	1957	James Grasky	Sacred Heart, Miles City
220 Yard Dash.....	22.2	1957	Gale Weidner	Troy
440 Yard Run.....	50.4	1958	Gale Weidner	Troy
880 Yard Run.....	2:02.2	1960	Dick Ward	Holy Rosary (Bozeman)
Mile Run.....	4:38.1	1960	Raymond Harris	Colstrip
120 High Hurdles.....	15.0	1961	Dan French	Plains
180 Low Hurdles.....	20.4	1961	Ed Hewett	Troy
Shot Put.....	51' 9¼"	1960	Gordon Wirtz	Corvallis
Discus Throw	150' 9"	1960	Walter Musgrove	White Sulphur Springs
Javelin Throw	192' 10"	1961	Mike Franklin	Hot Springs
Pole Vault	11' 8"	1958	John Harnley	Three Forks
Broad Jump	22' 3"	1959	Scott Simpson	Superior
High Jump.....	6' 6"	1959	Robert Hoppe	Townsend
880 Yard Relay.....	1:35.8	1959	Bob Hoppe	Townsend
			Dennis Miller	
			Clarence Miller	
			Richard Schwisow	

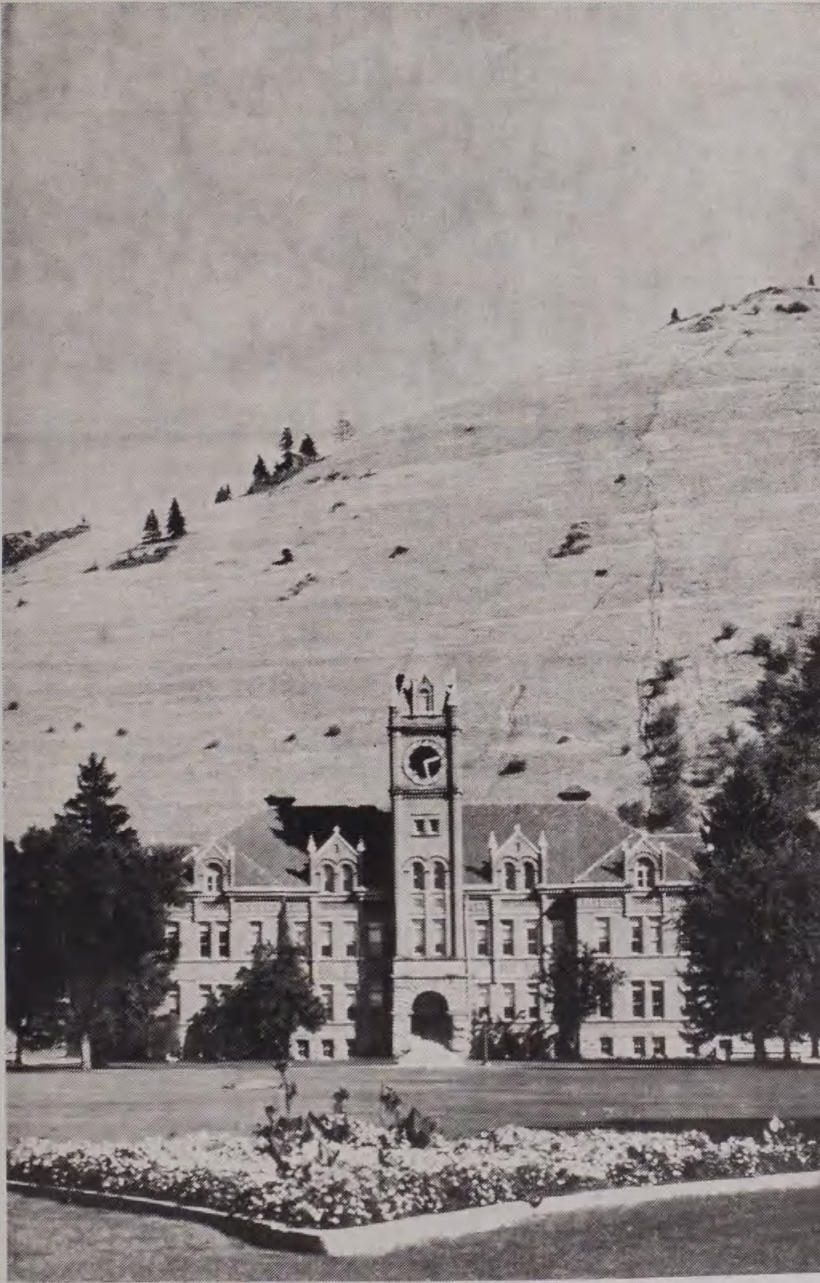
LOCATED NEXT DOOR TO THE TOWNHOUSE CAFE

STOICK'S ^{CUT} ^{RATE} DRUG

PRESCRIPTIONS

Greeting Cards • Gifts • Fine Cosmetics

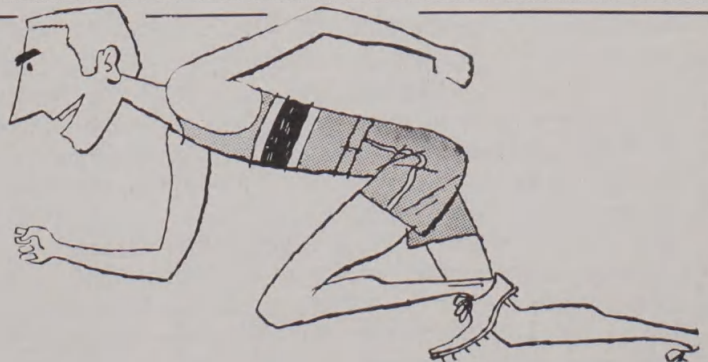
110 West Main



MSU'S
MAIN
HALL

WESTERN
MONTANA
NATIONAL **BANK**

Member FDIC



1962 INTERSCHOLASTIC COMMITTEE

CHARLES F. HERTLER	General Chairman
Firman Brown	Little Theatre
Ralph McGinnis	Speech Events
Ed Dugan	Editorial Association
George Dahlberg	Track
Vince Wilson	Tennis
John Lester	Golf
Troy Crowder	Administration
Maurine Clow	Women's Entertainment
Andy Cogswell	Men's Entertainment
Walt Lonner	Registration
Ruben Diettert	Entry Blanks
Joe Hashiasaki	Head Scorer
Herb Torgimson	Physical Equipment
Jack Gilluly	Publicity and Programs
Mike Green	Bear Paws
Bonnie Kositzky	Spurs

ACKNOWLEDGMENT...

The Interscholastic Committee wishes to thank the following organizations and individuals for their co-operation and assistance in helping with the 1962 Interscholastic:

Spurs and Bear Paws for their advance ticket sales and program sales.
 The Kiwanis, Lions, and Rotary Service Clubs.
 The Missoula Mercantile.
 The Missoula Chamber of Commerce.
 The Missoula merchants who contributed to advance ticket sales and program advertising.
 The Montana State University band and its director, James Eversole.
 The Daily Missoulian, the Missoula Times and the Montana Kaimin.
 Radio stations KGVO, KXLL and KYSS, and television station KMSO-TV.
 ASMSU Traditions Board and MSU fraternities, sororities, dormitories and other student groups.
 Newman Club for the songfest.
 Earl Martell, director of Student Activities-Facilities.
 Gertrude Chamberlain, director of the University Food Service.
 Sigma Delta Chi for the advanced publicity and meet coverage.
 Jack Ryan, Maribeth Dwyer, and Cyrile Van Duser of the University Publications and News Service.
 The many Missoula citizens who contributed their time and talent as judges in the various events.

1865



1962

**look for the names you know
... the famous labels you trust**

Why? For the assurance of integrity of design . . .
the unquestionable quality. That's what we look
for in the names we put our faith in . . . the
famous labels you'll always find present at:

The Mercantile

MONTANA'S OLDEST AND LARGEST DEPARTMENT STORE

WELCOME VISITORS

We hope you enjoy your stay in
Missoula and invite you to come in
and look over our fine selection of

Gifts, Novelties and Cameras

HAUGEN-McKAY CO.

Take Home a Souvenir from
Montana State University

Mugs

Pennants

Sweat Shirts

Associated Students' Store

Upstairs in the Lodge

"Time Out" Means
"Refreshments"

Coca-Cola



Nesbitts
California
Orange

Coca-Cola Bottling Co.
of Missoula

THE GOLDEN PHEASANT

**American and Chinese
Dishes**

318 North Higgins

**The Students of
Montana State University**

present



A Special Interscholastic Performance

MAY 25

8 p.m.

UNIVERSITY THEATRE

All Reserve Seats Available \$.50