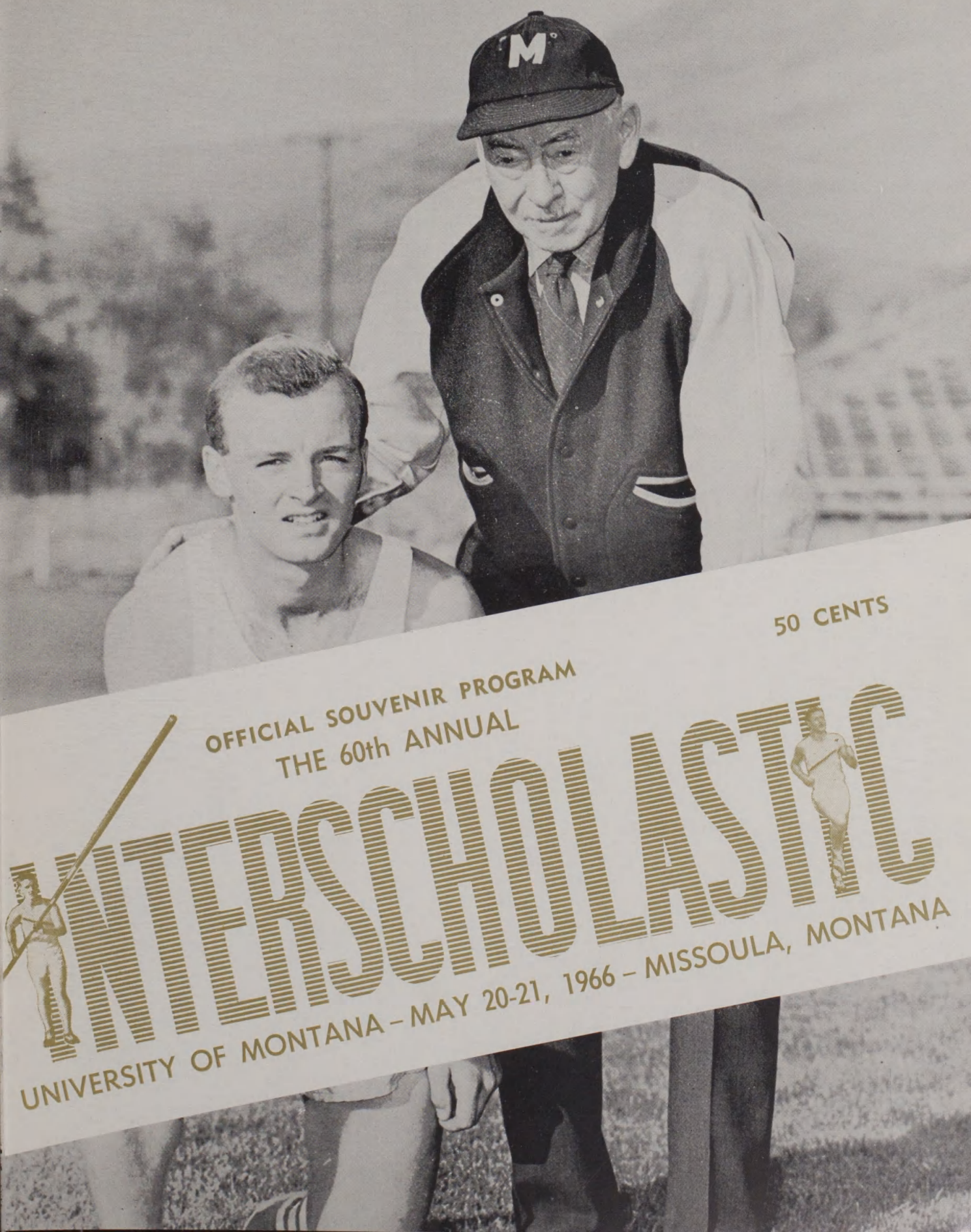


Programs - Trackme (Inter-scholastic)

1966



50 CENTS

OFFICIAL SOUVENIR PROGRAM  
THE 60th ANNUAL

# INTERSCHOLASTIC



UNIVERSITY OF MONTANA - MAY 20-21, 1966 - MISSOULA, MONTANA





DALLEY



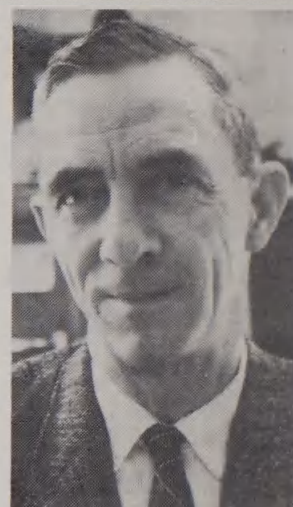
WILSON



NORD



DAHLBERG



HERTLER

## 1966 Interscholastic Committee

CHARLES F. HERTLER	General Chairman
George "Jiggs" Dahlberg	Track and Field
Ron Nord	Golf
JoAnn Dixon	Girls' Golf
Vince Wilson	Tennis
Rex Dalley	Montana High School Association
Maurice Clow	Women's Entertainment
Tony Valich	Information Booth
Earl Lory and Reuben Diettert	Official Scorers
Herb Torgrimson	Physical Equipment
Norm Amundson	Publicity and Programs
Joe Ward	Sigma Delta Chi
Jane Rowland	Spurs
Gene Presser	Bear Paws
Kathy Ryffel, Mary Lou Koppang	Queen Contest

### ABOUT THE COVER . . .

Montana track coach Harry F. Adams and distance star Doug Brown bow out of Grizzly circles this spring but their marks will never be forgotten.

Adams retires after 35 years of guiding University cindermen in the Pacific Coast, Skyline and Big Sky Conferences. He has coached three National Collegiate All-Americans—Jack Emigh (220), Dick Doyle (Discus) and Doug Brown (three- and six-mile runs).

He has been a member of the NCAA Track and Field Rules Committee, and in 1961 he was named to the Helms Athletic Foundation Track and Field Hall of Fame.

Brown, the Interscholastic mile record holder, was the star of the 1965 NCAA championships at Berkeley, Calif., breaking meet records in the three-mile (13:40.2) and six-mile (27:59.2). His six-mile time is the national collegiate record and the third fastest ever run by an American.

His picture appears on the cover of the NCAA Track and Field Guide for 1966, the first Montanan ever so honored.

Harry and Doug are at the Big Sky championships in Moscow, Idaho, this weekend and will miss the 60th Interscholastic meet, but it seems only fitting that this program be dedicated to them.



# Program of the Meet . . .

FRIDAY, MAY 20

- 6:30 a.m. **Boys' Golf.** All contestants meet in front of the Field House for transportation to Missoula Country Club Course.
- 6:30 a.m. **Girls' Golf.** All contestants meet in front of the Field House for transportation to University Golf Course.
- 7:30 a.m. **Boys' Tennis.** All participants report to Men's Gymnasium.
- 7:30 a.m. **Girls' Tennis** All contestants report to Women's Center
- 8:30 a.m. **Boys' Tennis.** Singles and doubles. University Courts.
- 9:00 a.m. **Girls' Tennis.** Singles and doubles. University Courts.
- 9:00 a.m. **Meeting of athletic representatives** of all schools at Men's Gym for distribution of contestant numbers.
- 9:15 a.m. **Hospitality Hour.** Welcome for all high school coaches and administrators by Missoula businessmen and University officials. Coffee and refreshments.
- 11:00 a.m. **Pole Vault Warm-up.** Classes A and C, Dornblaser Field.
- 12:00 a.m. **Pole Vault Competition Starts,** Class A.
- 1:00 p.m. **Parade of Athletes and Presentation of Queen candidates.** UM ROTC Band and Color Guard, Dornblaser Field.
- 1:15 p.m. **Track and Field Meet.**
- 8:30 p.m. **Dance.** Field House. Paul Revere and the Raiders. **Crowning of Interscholastic Queen.**

SATURDAY, MAY 21

- 6:30 a.m. **Boys' and Girls' Golf.** All contestants report to Field House for transportation to courses.
- 8:00 a.m. **Boys Tennis.** Singles and doubles. University Courts.
- 9:00 a.m. **Girls' Tennis.** Singles and doubles. University Courts.
- 11:00 a.m. **Pole Vault Warm-up.** Class AA and B, Dornblaser Field.
- 12:00 a.m. **Pole Vault Competition starts,** Class AA.
- 1:00 p.m. **Opening Ceremonies,** Dornblaser Field. UM AF ROTC Valkyrie Precision Drill Team.
- 1:15 p.m. **Track and Field Meet.**
- 3:00 p.m. **Golf and Tennis Awards,** presentations on Dornblaser Field.
- 8:30 p.m. **Dance.** Field House. Jack Ely and the Kingsmen.

# who cares



Every day you hear it, "I couldn't care less!"  
**Not at The Mercantile!**

**we care . . .** all day, every day!

**we care** about you, your home and your family and we go "all out" to help you make them perfect!

**we care** about your good opinion! That's why we're so meticulous about our merchandise, painstaking about service, fussy about housekeeping!

**we know** you like to shop at your leisure with a fully-trained, friendly salesperson ready to help at a moment's notice!

**we know** you want to see a wide selection!

**we know** you want deliveries on time!

**we know** you often need time to pay and that's why our generous credit terms are tailored to fit every type of budget!

**because we know** you want all these things . . . we deliver them . . . for, at The Mercantile . . . **we care!**

Of course, no matter how careful we are, sometimes we make mistakes. If our merchandise or service in any way disappoints you, we want you to let us know! This is the way you can help us serve you better . . . and we can prove to you, once again, that **we care!**

# we care!

## *The Mercantile*

SERVING SINCE 1865



# Program of Track and Field Events

## FRIDAY

### RUNNING EVENTS

- 1:15 Parade of Athletes
- 1:30 Trials—120' High Hurdles—Class C  
(2 heats)
- 1:36 Trials—120' High Hurdles—Class B  
(3 heats)
- 1:45 Trials—120' High Hurdles—Class A  
(2 heats)
- 2:00 Trials—100 yd. Dash—Class C  
(2 heats)
- 2:06 Trials—100 yd. Dash—Class B  
(3 heats)
- 2:15 Trials—100 yd. Dash—Class A  
(2 heats)
- 2:25 Trials—440 yd. Run, Class C  
(2 heats)
- 2:32 Trials—440 yd. Run, Class B  
(3 heats)
- 2:40 Final—Mile Run, Class C
- 2:50 Final—Mile Run, Class B
- 3:00 Trials—220 yd. Dash, Class C  
(2 heats)
- 3:10 Trials—220 yd. Dash, Class B  
(3 heats)
- 3:20 Trials—220 yd. Dash, Class A  
(2 heats)
- 3:30 Final—880 yd. Run, Class A
- 3:40 Final—880 yd. Run, Class AA
- 3:50 Trials—180 Low Hurdles, Class C  
(2 heats)
- 4:00 Trials—180 Low Hurdles, Class B  
(3 heats)
- 4:10 Trials—180 Low Hurdles, Class A  
(2 heats)
- 4:20 Trials—880 yd. Relay, Class C  
(2 heats)
- 4:30 Trials—880 yd. Relay, Class B  
(3 heats)
- 4:40 Trials—880 yd. Relay, Class A  
(2 heats)

### FIELD EVENTS

- 11:00 Pole Vault Warm-up—Class A & C
- 12:00 Pole Vault, Class A
- 1:30 High Jump, Class AA  
1st flight—Discus, Class B  
1st flight—Javelin, Class C  
Shot Put—Class A  
Broad Jump—Class A
- 2:00 Pole Vault—Class C
- 2:05 2nd flight—Discus, Class B  
2nd flight—Javelin, Class C  
Shot Put—Class AA  
Broad Jump—Class AA
- 2:35 High Jump—Class A  
1st flight—Discus, Class C  
1st flight—Javelin, Class B  
1st flight—Shot Put, Class B  
1st flight—Broad Jump, Class B
- 3:05 2nd flight—Discus, Class C  
2nd flight—Javelin, Class B  
2nd flight—Shot Put, Class B  
2nd flight—Broad Jump, Class B
- 3:35 Discus Throw—Class AA  
Javelin—Class A  
1st flight—Shot Put, Class C  
1st flight—Broad Jump, Class C
- 4:05 Discus—Class A  
Javelin—Class AA  
2nd flight—Shot Put, Class C  
2nd flight—Broad Jump, Class C

Trials in the following field events will be held with participants competing in flights. Class B and Class C discus throw (on practice field north of Dornblaser Field). Class AA and Class A shotput, Class B and Class C javelin throw and Class AA and Class A broadjump (all on Dornblaser field), followed by Class B and Class C shotput, Class AA and Class A javelin throw, Class B and Class C broadjump (all on Dornblaser Field), and Class AA and Class A discus throw (on practice field north of Dornblaser Field).



# Program of Track and Field Events continued

## SATURDAY

### RUNNING EVENTS

1:30 120 High Hurdles—Class C  
1:35 120 High Hurdles—Class B  
1:40 120 High Hurdles—Class A  
1:45 120 High Hurdles—Class AA  
1:50 100 yd. Dash—Class C  
1:54 100 yd. Dash—Class B  
1:58 100 yd. Dash—Class A  
2:02 100 yd. Dash—Class AA  
2:10 440 yd. Run, Class C  
2:15 440 yd. Run, Class B  
2:20 440 yd. Run, Class A  
2:25 440 yd. Run, Class AA  
2:30 Mile Run, Class A  
2:35 Mile Run, Class AA  
2:45 880 yd. Run, Class C  
2:50 880 yd. Run, Class B  
3:00 220 yd. Dash, Class C  
3:05 220 yd. Dash, Class B  
3:10 220 yd. Dash, Class A  
3:15 220 yd. Dash, Class AA  
3:25 180 yd. Low Hurdles, Class C  
3:30 180 yd. Low Hurdles, Class B  
3:35 180 yd. Low Hurdles, Class A  
3:40 180 yd. Low Hurdles, Class AA  
4:00 880 yd. Relay, Class C  
4:10 880 yd. Relay, Class B  
4:20 880 yd. Relay, Class A  
4:30 880 yd. Relay, Class AA

### FIELD EVENTS

11:00 Pole Vault Warm-up—Class AA & B  
12:00 Pole Vault—Class AA  
1:15 High Jump—Class B  
Shot Put—Class A  
Discus Throw—Class B  
Broad Jump—Class AA  
1:35 Shot Put—Class AA  
Discus Throw—Class A  
Broad Jump—Class B  
1:55 Shot Put—Class C  
2:00 Discus Throw—Class AA  
Broad Jump—Class A  
Pole Vault—Class B  
2:18 High Jump—Class C  
2:23 Shot Put—Class B  
Discus Throw—Class C  
2:33 Broad Jump—Class C  
Javelin Throw—Class C  
2:55 Javelin Throw—Class B  
3:20 Javelin Throw—Class A  
3:46 Javelin Throw—Class AA

440, 880 and mile races, will be started at the head of the straightaway.

*The Interscholastic Program*

Printed in our plant . . .

**Commercial Printing Department**

*The Missoulian-Sentinel*





**CHARLES HERTLER, Jiggs Dahlberg, Swede Dahlberg and Harry Adams at last Friday's Class AA and A Divisional Track Meet.**

## Montana Track Loses Four of Its Best

Montana track loses four outstanding men this year. Retiring from their duties after this spring are Harry "Swede" Dahlberg, track coach at Butte High School; Harry F. Adams, track coach at the University of Montana; Charles F. Hertler, chairman of the Interscholastic Committee, and George "Jiggs" Dahlberg, track manager of Interscholastic.

Swede Dahlberg, often recognized as the Dean of Montana high school coaches, retires at Butte after 45 years of service. He has coached track since 1922 and was also football and basketball coach in the Mining City for more than 30 years.

His record has included 11 Interscholastic titles, second only to Missoula on the all-time list. Bulldog squads have been second 18 times. In fact, only in 1934 and 1961 were Dahlberg's teams not among the top five.

It was 50 years ago, 1916, that Swede Dahlberg and Harry Adams played on the same University of Montana football team. In the half century since, both men have become well known and highly respected by all for their coaching endeavors.

Adams (see cover story) began coaching

track at UM in 1922, the same year Swede started at Butte. However, Harry spent a year at DePaul University in Chicago, 1924-25, before returning to Montana.

Charles Hertler leaves his Interscholastic post after 28 years. He doesn't retire, however, from chairman of the UM Men's Physical Education Department.

Largely through the efforts of Hertler, the Interscholastic gained the reputation as being Montana's most important high school event. It developed from a small activity to one which has thousands of participants and spectators.

The 1963 Interscholastic Program was dedicated to him for outstanding service to the University, community, state and Interscholastic.

Jiggs Dahlberg, former UM basketball coach and athletic director, has been track manager of the Interscholastic since 1961. He's now a professor in Men's P.E.

Like brother Swede, Jiggs was an outstanding athlete at the University. Swede was captain of the first and only UM football team to defeat the University of Washington (1920), and Jiggs was captain of the first Grizzly basketball squad to topple the Huskies (1925).



# High Point Winners, 1965



**Tim Stark**

Star of the Interscholastic was Glasgow's **Roy Robinson** who won four events and anchored the winning relay in Class A for 21¼ points. Robinson is shown edging teammate **Ted Schye** in 220 finals. Schye won the 440 and accounted for 13¼ points. Both return this year.

Polson's **Tim Stark** won three events and ran on the second place relay squad to lead Class B with 16 points. Stark now attends the University of Montana.

**Stan Goselin** of Billings Senior topped the close Class AA race with 11 points. Four others had 10 or more. Goselin, who returns this year, scored in low hurdles, first; high hurdles, third; broad jump, fourth, and relay, second.

**Dick Cross** of Hot Springs tallied 14 points in Class C to edge Randy Steffan of champion Granite by 2. Cross won the 100 and 440 and was second in the 220.



**Dick Cross**



**Roy Robinson (winning)  
and Ted Schye**



**Stan Goselin**

*Welcome Visitors! We hope you enjoy the meet*

**MOUNTAIN STATES TELEPHONE  
AND TELEGRAPH CO.**



# 1965 Highlights . . .



ED KANDUCH, ANACONDA, shown here edging Bill Voermans of Whitefish in the 880, set two Class A records. His 880 time was 1:59.0 and he clocked the mile in 4:27.8.



GARY THORN, GREAT FALLS, anchored the relay team that set a new Interscholastic Record, beating Jim Schleining and the Billings Senior team that had established the record the year before. Thorn won the 220 last year, and Schleining took the 100. Both are back.



BUTTE'S BOB HAWKE wasn't pushed as he bettered his own Interscholastic Records in the shot put, 61-1½, and discus, 180-9½.

things go  
better  
with  
**Coke**  
TRADE MARK



Nesbitts  
Tab  
Like

**COCA-COLA, 7-UP BOTTLING CO.**  
of Missoula



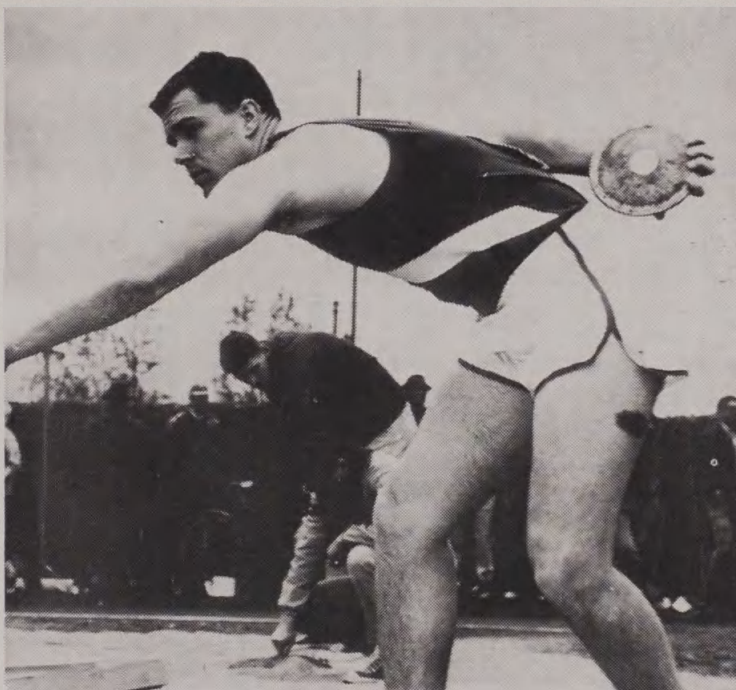
**Professional Photography**

Hammond Arcade





**Branch Brady**



**Steve Stiller**

**Branch Brady** raced to new Class AA records in the 880 (1:57) and mile (4:24). The Great Falls senior, almost unknown in track circles the year before, was the distance star of the entire meet.

Class A had its greatest year in the discus. **Steve Stiller** of Havre was among four who bettered the division record of 152-11. Stiller's toss of 165-1½ beat Bozeman's Perry Shane, the former record holder, Mike Vollmer, Anaconda Central, and Tony Welzenbach, Wolf Point.

**Lynne Hileman** of Whitefish edged 11 other finalists in the first Interscholastic Queen Contest ever held.



**Lynne Hileman**

# THE *Florence*

**MOTOR HOTEL**

MISSOULA, MONTANA

Bright New Accommodations

★ Chief Coffee Shop

★ Empire Dining Room

★ Traveler's Rest Lounge

FREE INSIDE PARKING



# 1965 Results . . .

## CLASS AA

### INDIVIDUAL:

100-yard dash	Jim Schleining, Billings Senior	9.9
220-yard dash	Gary Thorn, Great Falls	21.8
440-yard dash	Russ Whindom, Butte	50.6
880-yard run	Branch Brady, Great Falls	1:57.0*
Mile run	Branch Brady, Great Falls	4:24.0*
120-yard High Hurdles	Stu Johnson, Billings West	15.1
180-yard Low Hurdles	Stan Goselin, Billings Senior	19.7
Shot Put	Bob Hawke, Butte	61' 1½"***
Discus Throw	Bob Hawke, Butte	180' 9½"***
Javelin Throw	Al Weed, Kalispell	187' 2"
Pole Vault	Doug Bain, Kalispell	12' 9"
High Jump	Terry Carver, Great Falls	6'
Broad Jump	Commie Little, Great Falls	21' 9½"
880-yd. relay	Great Falls (Commie Little, Dave Nebel, Marty Palagi, Gary Thorn)	1:29.8**

\*Class AA record.

\*\*Interscholastic record.

NOTE—Great Falls' championship was fifth in Interscholastic history. Bison won titles in 1922, 1923 1929 and 1962.

Great Falls Russell will compete in AA ranks for first time this year. Last year was initial appearance for Missoula Hellgate.

### TEAM:

1. Great Falls	59
2. Butte	34
3. Billings West	31
4. Billings Senior	30½
5. Kalispell	25
6. Missoula Sentinel	17
7. Helena	8½
8. Great Falls Central	3
9. Missoula Hellgate	2



GREAT FALLS BISON, 1965 CLASS AA CHAMPS—Back row, l to r.: Ass't coach Ray Dodds, Rick Bautista, Branch Brady, Randy Hahn, Gary Thorn, Dick Jarman, Dave Nebel, Terry Carver, Marty Palagi, Mickey Cabbage, Commie Little, Coach Arnold Scott, Mike Rubino and Gary Braden. Front row: Manager Tom Denning, Bruce Steel, Jim Hewson, Manager Greg Cunniff and Manager John Rickert.



# 1965 Results, continued . . .

## CLASS A

### INDIVIDUAL:

100-yard dash	Roy Robinson, Glasgow	9.9****
220-yard dash	Roy Robinson, Glasgow	22.0
440-yard dash	Ted Schye, Glasgow	50.1
880-yard run	Ed Kanduch, Anaconda	1:59.0*
Mile run	Ed Kanduch, Anaconda	4:27.8*
120-yard High Hurdles	Roy Robinson, Glasgow	14.8***
180-yard Low Hurdles	Roy Robinson, Glasgow	19.3**
Shot Put	Tony Welzenbach, Wolf Point	56' 9½"
Discus Throw	Steve Stiller, Havre	165' 1½"
Javelin Throw	Courtney Taylor, Hamilton	188' 5"
Pole Vault	Jim Abbas, Beaverhead Co.	12' 6"
High Jump	Mike Managhan, Libby	5' 10"
Broad Jump	Mike Gallagher, Glasgow	20' 10½"
880-yd. relay	Glasgow (Doug Allie, Ted Schye, Mike Gallagher, Roy Robinson)	1:33.3

\*Class A Record.

\*\*Bettors Interscholastic Record but disallowed because of strong tail wind.

\*\*\*Bettors Class A Record but disallowed because of strong tail wind.

\*\*\*\*Ties Class A Record but disallowed because of strong tail wind.

## A LOOK AT GLASGOW'S SURGE IN TRACK:

1961	1962	1963	1964
1. Custer County 47 1/6	1. Custer County 52	1. <b>Glasgow</b> 46½	1. <b>Glasgow</b> 62
2. Hardin 43	2. <b>Glasgow</b> 31½	2. Havre 29	2. Bozeman 44
3. <b>Glasgow</b> 41½	3. Bozeman 22	3. Custer Co. 27	3. Hamilton 16
			Whitefish 16



THIRD IN A ROW FOR THE SCOTTIES—Front row, l. to r.: Dennis Fuhrman, Ron Grovum, Mike Gallagher, Tim Carmen and Bill Kline. Standing are Coach Dan Freund, Tom Bussing, Doug Allie, Roy Robinson, Ted Schye and Steve Rundle.

### TEAM:

1. Glasgow	48
2. Anaconda	18
3. Havre	17
4. Beaverhead of Dillon	15
5. Bozeman	13
6. Wolf Point	11
7. Hamilton	10½
8. Whitefish	10
9. Libby	9½
10. Columbia Falls	9
11. Powell of Deer Lodge	8
12. Anaconda Central	7
13. Fergus of Lewistown	6
Sidney	6
15. Butte Central	5
Park of Livingston	5
17. Hardin	4
Helena Central	4
Laurel	4

COMPLETE  
SIZZLIN'  
SIRLOIN  
**STEAK**  
DINNER

**\$1.39**

BONANZA  
**STEAK**  
DINNER  
.....  
**STEAK**  
SANDWICH  
.....  
CHOPPED SIRLOIN  
**STEAK**  
PLATTER

**99¢**

Hamburger Plate—79c

**BONANZA**

On Highway 93 South



# 1965 Results, continued . . .

## CLASS B

### INDIVIDUAL:

100-yard dash	Rick Strauss, Polson	10.3
220-yard dash	Dave Kohler, Loyola	22.6
440-yard dash	Tim Stark, Polson	50.3*
880-yard run	Tim Stark, Polson	2:01.1
Mile run	Tom Atkinson, Poplar	4:32.6
120-yard High Hurdles	Tim Stark, Polson	15.1
180-yard Low Hurdles	Duncan Hubbard, Polson	20.6
Shot Put	Darwin Purkett, Forsyth	52' 9¼"
Discus Throw	Jim Kenyon, Loyola	150' 10"
Javelin Throw	Dale Jackson, Huntley Project	174'
Pole Vault	Niles Humphrey, Malta	12' 9"
High Jump	Niles Humphrey, Malta	5' 10"
Broad Jump	Vic Felde, Stevensville	21' 2¾"
880-yd. relay	Harlowton (George Eaves, Don Swanz, Mac White, Ted Watson)	1:34.4

\*Bettered Class B record but disallowed because of strong tail wind.

### TEAM:

1. Polson	50½
2. Missoula Loyola	25
3. Malta	21
4. Harlowton	16½
5. Cut Bank	12½
6. Circle	12
7. Poplar	11
8. Fairfield	10
9. Columbus	7
Huntley Project	7
11. Conrad	5
Forsyth	5
Stevensville	5
14. Big Timber	4
15. Absarokee	3
Chester	3
Red Lodge	3
18. Corvallis	2
Lodge Grass	2
Sunburst	2
21. Mission	1½
22. Choteau	1
Nashua	1



POLSON PIRATES, Class B champions for second straight year. Front row, l. to r.: Ray Holt, Bruce Thomas, Pete Mangles, John Cloninger and Jim Funke. Standing are Coach Bill Geer, Duncan Hubbard, Dave Vanetz, Lynn Maas, Darrell Mayers, Rick Strauss, Roy Lundeen, Tom Sanford, Rex Dupuis, Tim Stark, Randy Horner and Coach Maier Miller.



# 1965 Results, continued . . .

## CLASS C

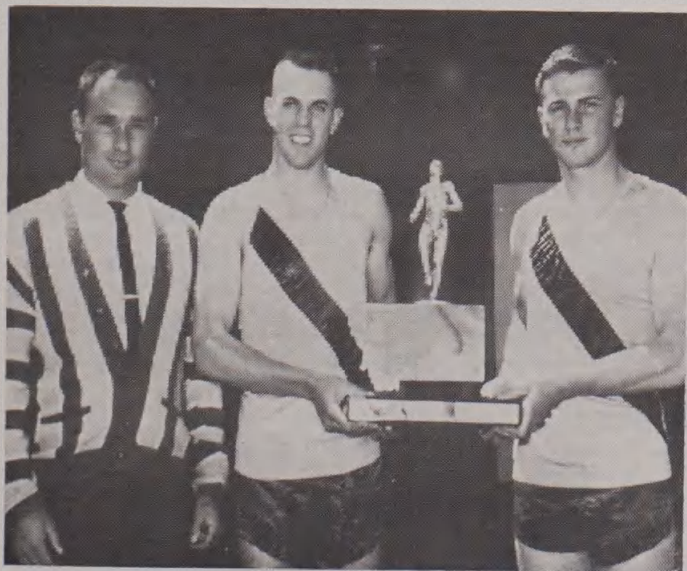
### INDIVIDUAL:

100-yard dash	Dick Cross, Hot Springs	10.1
220-yard dash	Milo Haugen, Plains	22.3
440-yard dash	Dick Cross, Hot Springs	50.4
880-yard run	Bill Baker, Denton	2:01.1
Mile run	Clarence Greenwood, Opheim	4:33.8*
120-yd. High Hurdles	Bob Hellman, Terry	15.3
180-yd. Low Hurdles	Randy Steffan, Granite	20.7
Shot Put	Wayne McEwen, Belgrade	53' 6"
Discus Throw	(tie) Jim Wright, Sheridan	136' 3½"
	Ron Lee, Simms	136' 3½"
Javelin Throw	Randy Steffan, Granite	177' 10½"
Pole Vault	Jim Benner, Cascade	11' 6"
High Jump	Jerry Simons, St. Regis	6' 1"
Broad Jump	Howard Leighty, Troy	21' 1"
880-yd. relay	Arlee (Matt, Wolcott, Big Sam, Nance)	1:36.0

\*—Class C Record.

### TEAM:

1. Granite of Philipsburg	16
2. Hot Springs	14
Medicine Lake	14
4. Plains	13
5. St. Regis	11
Troy	11
7. Simms	10½
8. Belgrade	10
9. Arlee	9
10. White Sulphur Spgs.	8
11. Highwood	7
Sacred Heart	7
Terry	7
Wibaux	7
15. Denton	6
Sheridan	6
17. Cascade	5
Opheim	5
19. Belt	4
Jordan	4
Victor	4
22. Augusta	3
Boulder	3
Brady	3
Dutton	3
Superior	3
27. Manhattan	2
St. Leo's	2
Whitehall	2
Wesby	2
31. Belfry	1½
Broadview	1½
Stanford	1½
34. Darby	1
Power	1
St. Labre's Mission	1
Townsend	1



GRANITE OF PHILIPSBURG, 1965 Class C Champions. l. to r.: Coach Roger Talbott, Randy Steffan and Bob Mungas. Steffan won both low hurdles and javelin and was fourth in high hurdles. Mungas placed second in pole vault.

WELCOME  
VISITORS!

**PALACE  
HOTEL**

141-147 W. Broadway

Located on Highways  
10 and 93





**JANET WHALEY**  
Sacred Heart of  
Missoula



**SHIRLEY EATON**  
Helena Senior



**ROBERTA DAGGETT**  
Laurel



**JO ANN VAN  
BLARICOM**  
Hamilton

## QUEEN FINALISTS

Beauty reigns again at Interscholastic. Friday evening, May 20, during the dance at the Field House, one of 12 attractive young ladies on these pages will be crowned queen of the 1966 Interscholastic.

This is the second queen contest sponsored by UM's Traditions Board. Last year's winner, Lynne Hileman of Whitefish, and first runner-up, Jane Nordlund of Billings, now attend UM and both have had a part in picking the current finalists.

The 12 finalists were selected from about 50 candidates last week by Traditions Board. Judging was based on appearance and participation in high school activities. The queen and her two attendants will assist in presentation of awards at Saturday's track and field meet.

Co-chairmen of the 1966 contest are Kathy Ryffel and Mary Lou Koppang, both UM students.

Finalists, in alphabetical order, are Roberta Daggett, Laurel; Shirley Eaton, Helena; Terry Heine, Great Falls Russell; Peggy Lear, Fairfield; Denice Luncford, Florence; Lynette Mathsen, Butte Public; Dixie Potts, Bigfork; Carol Seel, Havre Public; Sande Smiley, Bozeman; Connie Thompson, Joliet; Jo Ann Van Blaricom, Hamilton, and Janet Whaley, Sacred Heart of Missoula.

**Roberta Daggett** was the 1965 Homecoming Queen at Laurel. She was a prom queen candidate. Miss Daggett has been a class officer for three years and is president of choir. Other activities include Quill and Scroll, pep club, band, Laurelettes, FHA and Girls Athletic Association.

**Shirley Eaton** of Helena was elected Queen Vigilante in November and lists that near the top of her honors. She belongs to National Honor Society and is active in twirling and 3-7-77's while maintaining a B average in the classroom.

**Terry Heine** is student body vice president at Charles M. Russell in Great Falls. She holds the same office in Choir and Art Club. Miss Heine is year-book art editor and was Christmas Ball Queen.

**Peggy Lear** belongs to many groups at Fairfield. Among them are Band, FHA, chorus, annual staff, pep band and girls' sextet. She was a pom pon girl three years and is currently vice president of Junior Newman Club.

Few things have escaped **Denice Luncford** of Florence. While a member of the regular honor roll for four years, Miss Luncford was a cheerleader, member of chorus and on the yearbook and paper staffs. As a junior she was honored among the top 10 per cent of high school students in Ravalli County and later attended high school week. She is currently year-book co-editor and Girls' Club president.

**Lynette Mathsen** was Queen Hostess at the Big 32 basketball tournament in Butte last winter. She has been AS Senior Queen, Hennessey's Fashion Club president and Future Nurses Club vice president. She is also a senior class officer and student council representative.



**TERRY HEINE**  
Great Falls Russell



**DENICE LUNCFORD**  
Florence





**LYNETTE MATHSEN**  
Butte Public



**CAROL SEEL**  
Havre Public



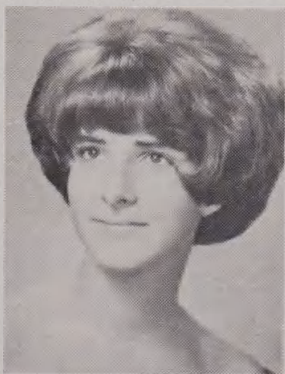
**PEGGY LEAR**  
Fairfield



**DIXIE POTTS**  
Bigfork



**SANDE SMILEY**  
Bozeman



**CONNIE THOMPSON**  
Joliet

## INTERSCHOLASTIC—1966

**Dixie Potts** of Bigfork likes music and while in high school has been involved with both vocal groups and playing the piano. She is a member of pep club, annual staff, Vikettes, FHA and her church youth group.

**Carol Seel** belongs to National Honor Society and is president of French Club at Havre High. She is also a cheerleader and belongs to pep club, spur club, G.A.L., choir, Hi-Tones Ensemble, Rainbow and is a member of school paper and yearbook staffs.

American Field Service, Thespians and German Club are a few of the activities caught by **Sande Smiley's** attention at Bozeman. She is president of girl's pep club and was sophomore class vice president.

Miss Smiley also lists girl's ensemble, chorus, annual staff, FHA, Triple Trio, senior council, student council on her busy schedule. She has received two citizenship awards and has been a candidate in Homecoming and Prom queen contests.

**Connie Thompson** is co-editor of yearbook and has been cheerleader for three years at Joliet. Her other activities include pep club, Thespians, stage band, journalism, band, chorus, class plays and Catholic Youth Organization.

A member of National Honor Society and a varsity cheerleader, **Jo Ann Van Blaricom** is a solid fixture around Hamilton High. She is a Girl's State delegate and a member of the all-state chorus. Miss Van Blaricom belongs to honor pep club, Yearling Staff, Broncettes, concert choir and senior ensemble.

**Janet Whaley** of Sacred Heart Academy was Homecoming Queen last fall. She is also a member of National Honor Society, Francilians, pep club, Fashion Board, S.C.A.C., and Ramettes. She was a delegate to Sodality Convention in Seattle as a junior. Miss Whaley has a scholarship for the summer Art Camp at the University of Kansas.

WELCOME VISITORS

*Cecil's*

Ladies Apparel and Gifts

Visit Our Exclusive Bridal-Formal Salon

Missoula

Phone 543-5610

Hammond Arcade



# Golf Entries . . .

## BOYS' DIVISION At Missoula Country Club Course.

### BEAVERHEAD COUNTY

Burwell, Bill  
Taylor, Phil

### BILLINGS CENTRAL

Ford, Tom  
Marbel, Fred  
Maronick, John  
Ryan, Dick  
Schiltz, John  
Stokos, Jim  
Sturm, Carl

### BILLINGS SENIOR

Dye, Ron  
Elmore, Dick  
Hammeral, John  
Jerhoff, Steve  
Langman, Scott  
Linn, Dave  
McAllister, Lee  
Sundahl, John

### BILLINGS WEST

Bellingham, Randy  
Brown, Rick  
Erickson, Dave  
Leming, Larry  
Oliver, Mike  
Reger, Randy  
Sasich, Phil  
Schuyler, Bob  
Segard, Jim  
Smith, Ron

### BOZEMAN SENIOR

Ahrendes, Jim  
Barkell, Bob  
Barkell, John  
Gardner, John  
Hammerland, Guy  
Jensen, Daryll  
Kuhl, Dick  
Lilly, Greg  
Olson, Bruce  
Simpkins, Tom

### BUTTE PUBLIC

Koporvica, Skip  
McDonald, Bill  
Devine, Ken  
Sullivan, Chris  
McCarthy, Don  
Verbeck, Ron  
Travis, Bob  
Erickson, Max

### CHOTEAU

Davidson, John  
Van Auken, Dennis

### CONRAD

Aline, Jim  
Armstrong, David  
Bakken, Terry  
Munson, Greg  
Robinson, Tom  
Yunck, John

### CUSTER COUNTY

Cutting, Doug  
Degal, Dan  
Hagen, Jack  
Mitchell, Dick  
Rowen, Scott  
Tookey, John  
Whitten, Jack  
Woolhisen, Dale

### CUT BANK

Crockett, Mike  
Emerson, Harry  
Johnstone, Dan  
Johnstone, Steve  
Moore, Pat  
Pickle, Bob  
Werner, Mark

### FLATHEAD

Button, Harvey  
Donahue, Mark  
Fry, Jack  
Jerrow, Thomas  
Hanson, Marlin  
Swanberg, Chris  
McGlenn, Roger  
Ellingson, Greg  
Sowerwine, Henry

### FERGUS COUNTY

Elliott, Tom  
Finnicum, Curtis  
Hovden, Jim  
Letelier, Bob  
Letelier, John  
Nackerud, Larry  
Smith, Everett  
Wysel, Glen

### FORSYTH

Dean, Rudy  
Gambill, Gary  
Makin, Jack  
Smith, Mike  
Volden, Don

### FORT BENTON

Bennett, Gene  
Herbold, Jim  
Larson, Bill  
Leaf, Mike  
Leinart, Tom

### GREAT FALLS CENTRAL

Culbertson, Frank  
Flaherty, Ray  
Kelley, Jim  
Leonhard, Ron  
Power, Casey  
Quinn, Terry  
Quinn, Tim  
Tobin, Mike

### GREAT FALLS SENIOR

Balzarini, Steve  
Knutson, Dick  
Kraft, Gregg  
Midgley, Bob  
Murray, Garv  
Peterson, Ron  
Schlameus, Jeff  
Wedsker, Chuck

### HAMILTON

Annin, Burt  
Arnot, Stewart  
Bell, John  
Blahnik, Mike  
Ford, John  
Moorhead, Mike  
Osburn, Mike  
Patzner, Allen  
Rummel, Bill  
St. John, David  
Steenuer, Craig  
Simmons, Pat

### HARLOWTON

Bayley, Garland  
Berg, Rick  
Jones, Bill  
McGhee, Robert  
Maixner, Mike  
Mihalovich, Kenny  
Otter, Paul  
Scotson, Walter  
Stearns, Jim  
Witt, Jim

### HAVRE CENTRAL

Chancey, Michael

### HAVRE PUBLIC

Hauge, Lane  
Lovell, James  
Taylor, Vince  
Von Eschen, Ken

Yates, Doug

### HELENA SENIOR

Andrews, Jeff  
Dennis, Clark  
Doering, Bruce  
Jawort, Tex  
Johnson, Chuck  
Mazurek, Joe  
Ranf, Rick  
Tubbs, Pat  
Turnquist, Lynn

### HELLGATE, MISSOULA

Flick, John  
Forbus, Brad  
Meyes, John  
Swisher, Mike  
Tabor, Bill

### LIBBY

Agather, Mark  
Agather, Max  
Anderson, Rich  
Applegate, Rick  
Fennessy, Mike  
Hennessy, Mike  
Lockard, Larry  
Phillips, Byron  
Schmauch, Mike  
Smart, Ted

### LOYOLA, MISSOULA

Gaul, John  
Peterson, Greg  
Solon, Art

### PARK COUNTY

Erickson, Bruce  
House, Alan  
Jordan, Edwin  
Kalitowski, Mark  
Nugent, Monte  
Olson, Ray  
Olson, Tom  
Pearson, Bruce

### PLENTYWOOD

Bussinger, Mike  
Kienitz, Nolan  
Peterson, Robert  
Smith, Jeff

### POLSON

Anderson, Jock  
Blankenhorn, Charles  
Dritzer, Jack  
Farnum, David  
Fisher, Jon  
Pinkney, Bill

### POWELL COUNTY

Cooper, Gary  
Drissen, Dennis  
Elliason, Lon  
Finch, Larry  
Gilmore, Gary  
Hammond, Andy  
Hughs, Lynn  
Hyde, Doug  
Jovick, Bob  
Pontet, Jim  
Ullery, John

### ROSARY, BOZEMAN

Hartman, Bruce  
Schrupp, Dave

### RUSSELL, GREAT FALLS

Beck, Ken  
Black, Jack  
Carpenter, Mike  
Devine, Tim  
Duncan, John  
Flynn, Mike  
Swingley, Dick  
Terrill, Rick

### SENTINEL, MISSOULA

Anton, Mike  
Carpenter, Rick  
Denton, Mark  
Flaherty, Marc  
Nord, Jeff  
Ogg, Jim

### SHELBY

Addy, Kelly  
Driscoll, Dan  
Flesch, Allan  
Svenningsen, Eric

### SIDNEY

Christenson, Steve  
Harper, Bill  
Knaff, Mike  
Norden, Dick  
Nutter, John  
Packard, Randy  
Williamson, Steve

### WHITEFISH

Amundson, Arly  
Backadahl, Dean  
Kettleson, Bob  
Labrie, Lennie  
Luke, Jon  
Pennecard, Dale

## GIRLS' DIVISION At University Course.

### BILLINGS SENIOR

Hilleboe, Susan  
Nybo, Kristin  
West, Sandy  
Wise, Marcia

### BOZEMAN SENIOR

Berg, Carol  
Wolfe, Dianne

### BUTTE PUBLIC

German, Ann  
Kloepser, Kathie

### CUSTER COUNTY

Carlson, Ann  
Cutting, Kitty

### FLATHEAD

Simpson, Kay  
Roche, Lynn  
Huso, Susan  
Button, Diane

### FORSYTH

Tallent, Barbara

### GREAT FALLS CENTRAL

Bulger, C.  
Kenny, C.  
Moran, K.  
Scott, M.  
Sprinkle, S.

### HAMILTON

McLean, Margaret  
Munoz, Marie  
Popiel, Susan

### HELLGATE, MISSOULA

Storez, Jeanne  
Wirth, Yvonne

### POLSON

Nelson, Sandy  
Thomas, Heather

### POWELL COUNTY

Speck, Lynn  
Woodward, Sheryl

### ROSARY, BOZEMAN

Boyd, Pam (Alt.)  
Gary, Marie  
Messmer, Sue

### RUSSELL, GREAT FALLS

Bonner, Adele  
Hill, Sharla  
Johnson, Liz  
Koby, Candy

### SENTINEL, MISSOULA

Blake, Anna  
Madsen, Terrylea  
Nord, Debbi  
Peterson, Peggy  
Romstad, Christy  
Thibodeau, Judy

### SIDNEY

Butka, Patty  
Fischer, Carol

### WHITEFISH

Hoffman, Mary Ann



# 1965 Golf Results ...

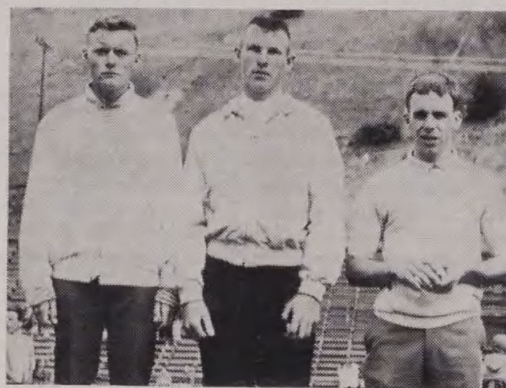
## BOYS' GOLF

(36 holes)

1. Marlin Hanson, Kalispell .....151  
(won playoff)
2. Rick Carpenter, Sentinel .....151
3. Bruce Doering, Helena .....156  
(won playoff)
4. Robert Eames, Billings Sr. ....156
5. Mark Donahue, Kalispell .....157
6. Charles Schuyler, Billings West .....159  
Larry Thompson, Miles City .....159  
John Mahoney, Miles City .....159

## BOYS' 4-MAN TEAM

1. Missoula Sentinel .....640  
(Rick Carpenter 151, Bob Nesbit 160,  
Bill Rapp 164, Glen McEvoy 165)
2. Kalispell .....641
3. Miles City .....648
4. Billings Senior .....661



1965 GOLF WINNERS—L. to r.: Marlin Hanson, Kalispell; Rick Carpenter, Sentinel, and Bruce Doering, Helena.

## GIRLS' GOLF

(18 holes)

1. Carolyn Fopp, Great Falls .....85
2. Susan Knight, Great Falls .....94
3. Kay Simpson, Kalispell .....95
4. Christy Romstad, Hellgate .....101
5. Susan Huso, Kalispell .....101
6. Heather Thomas, Polson .....109

# 1965 Tennis Results ...

## BOYS' SINGLES

### Finals:

Karl Kreiger, Sentinel, def. Brian Kekich, Sentinel, 6-2, 6-4.

### Semi-finals:

Kekich def. Dave Klarich, Billings West, 2-6, 6-2, 6-3.

Kreiger def. Doug Powell, Billings West, 3-6, 6-2, 6-3.

## GIRLS' SINGLES

### Finals:

Kerry Meloy, Helena, def. Jean Werner, GFC, 6-4, 6-4.

### Semi-finals:

Meloy def. Carol Holcomb, Sentinel, 6-2, 6-1.

Werner def. Diane Hargas, Sentinel, 6-2, 6-4.

## BOYS' DOUBLES

### Finals:

Kreiger and Kekich def. Powell and Klarich, 6-1, 6-4.

### Semi-finals:

Kreiger and Kekich def. Bill Hensleigh and Jim Leary, Kalispell, 6-1, 6-2.

Powell and Klarich def. Gene Gudmondson and Dick Giesecke, Miles City, 6-1, 6-4.

## GIRLS' DOUBLES

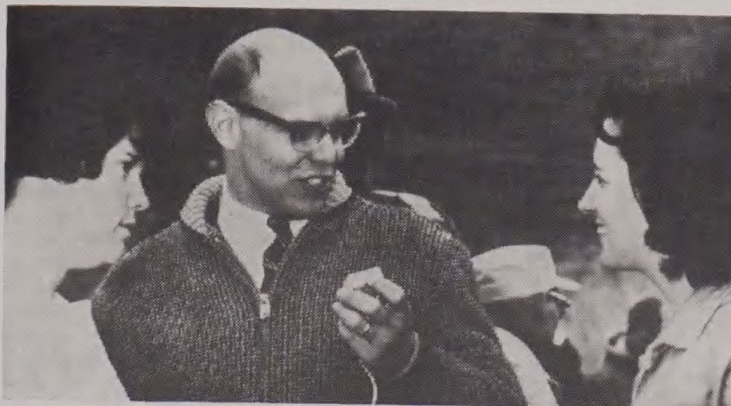
### Finals:

Marge Heffern and Anita O'Connor, GFC, def. Tana Faurot and Shauna Kreiger, Sentinel, 6-2, 6-3.

### Semi-finals:

Heffern and O'Connor def. Janet Hitchcott and Karen Osburn, Hamilton, 6-3, 6-3.

Faurot and Kreiger def. Jean Gray and Jane Nordlund, Billings Sr., 6-4, 1-6, 7-5.



GIRLS' DOUBLES WINNERS Anita O'Connor, left, and Marge Heffern of Great Falls Central discuss their second straight state title with Gene Peterson of KGVO Radio.



# Tennis Entries ...

## BOYS' SINGLES

### ANACONDA SENIOR

Breeke, Dale

### BILLINGS CENTRAL

Benish, Jim  
Ferro, Ken  
Gannon, John  
Moore, Bob  
Powers, Dennis

### BILLINGS SENIOR

Hansen, Dick  
Herman, Russ  
Jakob, Paul  
Wendte, Ron

### BILLINGS WEST

Handley, Steve  
Harrington, Don  
Harris, Jim  
Hudson, Jerry  
McKee, John

Powell, Doug

Roberts, Curt

Roberts, Don

### BOZEMAN SENIOR

Carlson, Bob  
Christiansen, Rich  
Fisher, Don  
Harmon, Steve  
Johnstone, Jim  
Kelly, Mark  
Warfield, Tom

### CUSTER COUNTY

Benger, Casper  
Coffrin, Gary  
Luther, Wayne  
Peterson, Gary  
Provost, Roger  
Wolhowe, Erile  
Stone, Ray

### CUT BANK

Prater, Tim  
Smith, Steve

### FLATHEAD COUNTY

Hamilton, Terry  
Leary, Jim  
Wilke, Pete

### FORT BENTON

Ross, Corbin

### GREAT FALLS CENTRAL

Pederson, Ken  
Pederson, Mike  
Mansfield, Pat  
O'Neil, Dennis

### GREAT FALLS PUBLIC

Carpenter, Roy  
Connell, Rick

Graham, Kim  
Jamieson, Doug  
Mozier, Clark  
Tadwick, Jim

### GREAT FALLS, CHAS. M. RUSSELL

Bartlett, Mike  
Bunker, Dave  
Corbin, Stuart  
Darden, Jim  
Delaney, Mike  
Strause, Howard

### HAMILTON

Albert, Dave  
Fullerton, Tom  
Howe, George  
Lea, Scott  
Loving, Gary  
Milner, Eric  
Peterson, Harrell  
Tapscott, Tim

### HAVRE CENTRAL

Brenden, Danny

### HELENA SENIOR

Bone, Larry  
Boner, Bill  
DeVore, Rick  
Meloy, Mark  
Nelson, David

### HELLGATE, MISSOULA

Barrier, Brian  
Chessin, Burt  
Chumrau, Gary  
Holt, Hans  
Szakash, Mike

### LIBBY

Evans, Kelly

### SENTINEL, MISSOULA

Cox, Tom  
Diggs, Brad  
Diggs, Brian  
Krieger, Karl  
Parker, Randy  
Reimer, Bill  
Rogers, Mike  
Slusher, Dan

## BOYS' DOUBLES

### BILLINGS CENTRAL

Benish, Jim  
Cannon, John  
Moore, Bob  
Powers, Dennis

### BILLINGS SENIOR

Hansen, Dick  
Herman, Russ  
Jakob, Paul  
Wendte, Ron

### BILLINGS WEST

Handley, Steve  
Harrington, Don  
Harris, Jim  
Hudson, Jerry  
McKee, John  
Powell, Doug  
Roberts, Curt

Roberts, Don

### BOZEMAN SENIOR

Carlson, Bob  
Christianson, Rich  
Fisher, Don  
Harmon, Steve  
Johnstone, Jim  
Warfield, Tom

### CUSTER COUNTY

Benger, Casper  
Coffrin, Gary  
Luther, Wayne  
Peterson, Gary  
Provost, Roger  
Stone, Ray  
Wolhowe, Erile

### CUT BANK

Prater, Tim

### FLATHEAD COUNTY

Hamilton, Terry  
Leary, Jim  
Wilke, Pete

### GREAT FALLS CENTRAL

Pederson, Ken  
Pederson, Mike  
Mansfield, Pat  
O'Neil, Dennis

### GREAT FALLS PUBLIC

Carpenter, Roy  
Connell, Rick  
Graham, Kim  
Jamieson, Doug  
Mozier, Clark  
Tadwick, Jim

### RUSSELL, GREAT FALLS

Bartlett, Mike

Bunker, Dave  
Corbin, Stuart  
Darden, Jim  
Strause, Howard

### HAMILTON

Albert, Dave  
Fullerton, Tom  
Howe, George  
Lea, Scott  
Loving, Gary  
Milner, Eric  
Peterson, Harrell  
Tapscott, Tim

### HELENA SENIOR

Bone, Larry  
Boner, Bill  
DeVore, Rick  
Meloy, Mark  
Nelson, David

### HELLGATE, MISSOULA

Barrier, Brian  
Chessin, Burt  
Chumrau, Gary  
Holt, Hans  
Szakash, Mike

### LIBBY

Agather, Mark  
Evans, Kelly

### SENTINEL, MISSOULA

Cox, Tom  
Diggs, Brad  
Diggs, Brian  
Krieger, Karl  
Parker, Randy  
Reimer, Bill  
Rogers, Mike  
Slusher, Dan  
Delaney, Mike

## GIRLS' SINGLES

### BILLINGS CENTRAL

Burgoyne, Pauline  
Dugan, Barbara  
Rossetto, Teresa  
Zimmerman, D'Anne

### BILLINGS SENIOR

Bertelson, Donna  
Haag, Claudia  
Lee, Bobi  
Mullins, Sally  
Nicolson, Mary  
Olsen, Karen  
Yapuncich, Kathy

### BILLINGS WEST

Cuculich, Chris

Gildroy, Karen

Irwin, Cherie

Meyer, Marion

Restad, Penne

Rogers, Louise

Sittor, Vicki

Weaver, Lorrie

### BOZEMAN SENIOR

Collins, Bonnie  
Crouse, Rene

### CUSTER COUNTY

Grauman, Kathy  
Hurlburt, Judy  
Jonerson, Diane  
Kouba, Vicky

Millen, Cheryl  
Stewart, Susan  
Stieg, Linda

### CUT BANK

Maher, Cathy  
Good, Jeri

### GREAT FALLS CENTRAL

Heffern, Kathy  
Marquard, Ginney  
May, Clarey  
Rutan, Pat

### GREAT FALLS PUBLIC

Erdmann, Betty  
Fortner, Lynette  
Furan, Darlene  
LeDesky, Vicki

McQuirk, Mary Jo  
Poulsen, Orva

### GREAT FALLS, CHAS. M. RUSSELL

Beaudry, Darlene  
Braden, Karen  
Madson, Jan  
Rutton, Carol  
Smith, Sherry

### HAMILTON

Dittmaier, Amy  
Hornung, Clarene  
Jones, Diane  
Popiel, Sue

### HELENA SENIOR

Christofferson, Juline  
Coughill, Julie

Horner, Juay  
LaSalle, Sue  
Monahan, Colleen  
Robertson, Bev

### HELLGATE, MISSOULA

Harsell, Pat  
Harsell, Susie  
Hofferber, Connie  
Hofferber, Terry  
Wood, Laurie

### SENTINEL, MISSOULA

Alley, Susie  
Campbell, Colleen  
Faurot, Tana  
Krieger, Shauna  
Slusher, Jeanne

## GIRLS' DOUBLES

### BILLINGS CENTRAL

Burgoyne, Pauline  
Dugan, Barbara  
Rossetto, Teresa  
Zimmerman, D'Anne

### BILLINGS SENIOR

Bertelson, Donna  
Haag, Claudia  
Lee, Bobi  
Mullins, Sally  
Nicolson, Mary  
Olsen, Karen

### BILLINGS WEST

Cuculich, Chris  
Gildroy, Karen  
Irwin, Cherie  
Meyer, Marion  
Restad, Penne  
Rogers, Louise  
Sittor, Vicki  
Weaver, Lorrie

### CUSTER COUNTY

Grauman, Kathy  
Hurlburt, Judy  
Jonerson, Diane

Kouba, Vicky  
Miller, Cheryl  
Stewart, Susan  
Stieg, Linda

### GREAT FALLS CENTRAL

Faulkner, Marilyn  
Marquard, Ginney  
May, Clarey  
Rutan, Pat

### GREAT FALLS PUBLIC

Erdmann, Betty  
Fortner, Lynette  
Furan, Darlene

LeDesky, Vicki  
McQuirk, Mary Jo  
Poulsen, Orva

### GREAT FALLS, CHAS. M. RUSSELL

Beaudry, Darlene  
Braden, Karen  
Madson, Jan  
Rutton, Carol  
Smith, Sherry

### HAMILTON

Hitchcott, Joyce  
Lokken, Honey Rae

### HELENA SENIOR

Christofferson, Juline

Coughill, Julie  
Horner, Judy  
LaSalle, Sue  
Monahan, Colleen  
Robertson, Bev

### HELLGATE, MISSOULA

Harsell, Pat  
Harsell, Susie  
Hofferber, Connie  
Hofferber, Terry  
Wood, Laurie

### SENTINEL, MISSOULA

Alley, Susie  
Campbell, Colleen  
Faurot, Tana  
Krieger, Shauna  
Slusher, Jeanne



## 100-YARD DASH

Record: :09.6, Larry Questad, Park, 1961.

### CLASS AA

11.	Schleining, Jim—Billings Sr.	.....
20.	Lewis, Bob—Billings West	.....
28.	Alt, Lee—Butte	.....
35.	Garrett, John—Butte	.....
40.	Verona, Sam—Butte	.....
44.	Mero, Dave—Flathead	.....
55.	Palagi, Marty—Great Falls	.....
58.	Zins, Bill—Great Falls	.....
70.	Thorn, Gary—G. F. Russell	.....
90.	Stein, Charles—Helena	.....

### CLASS B

253.	Hufford, Roger—Baker	.....
273.	Harbolt, William—Chinook	.....
290.	Meissner, Wes—Circle	.....
292.	Schillinger, Jim—Circle	.....
299.	Hoover, Tom—Conrad	.....
305.	Yeager, Leland—Conrad	.....
319.	Salisbury, Max—Eureka	.....
331.	Kelley, Mike—Fort Benton	.....
345.	McGuire, Gary—Harlem	.....
351.	Whirry, Gordon—Havre Central	.....
354.	Oblander, Dave—Huntley Project	.....
356.	Smiedala, Richard—Huntley Project	.....
370.	Loran, Pat—Missoula Loyola	.....
377.	Row, James—Malta	.....
384.	Posivio, Bill—Mission	.....
391.	Gustafson, Jerel—Plentywood	.....
407.	Voorhees, Jim—Poplar	.....
416.	Lyons, Pat—Polson	.....
431.	Branum, Keith—Roundup	.....
433.	Goffena, Bob—Roundup	.....
434.	Gray, Rick—Roundup	.....
448.	Larson, Sid—Shelby	.....
449.	Staub, Len—Shelby	.....
452.	Felde, Vic—Stevensville	.....
462.	Majerus, Tom—Valier	.....

### CLASS A

107.	Martin, George—Anaconda Central	.....
129.	Groepper, Jay—Bozeman	.....
130.	Kerby, Steve—Bozeman	.....
131.	Ogle, Rick—Bozeman	.....
144.	Eyre, Allen—Columbia Falls	.....
148.	Hill, Cork—Columbia Falls	.....
160.	Robinson, Roy—Glasgow	.....
161.	Schye, Ted—Glasgow	.....
168.	Ziegler, Larry—Glendive	.....
178.	Stoenner, Greg—Hamilton	.....
192.	Luck, Rod—Helena Central	.....
201.	Price, Tim—Laurel	.....
218.	Fink, Wayne—Livingston	.....
237.	Cerkovnik, Mike—Sidney	.....
247.	Spitzer, Bill—Wolf Point	.....

### CLASS C

472.	Barrett, Joe—Augusta	.....
485.	Doney, Tom—Boulder	.....
502.	Kuebler, Lyle—Centerville	.....
506.	Beartusk, Ken—Colstrip	.....
508.	Irwin, Larry—Darby	.....
510.	Bolling, Randy—Denton	.....
512.	Edwards, Cliff—Denton	.....
517.	Johnson, Bob—Dutton	.....
523.	Kerr, Herb—Ekalaka	.....
533.	Fisher, Warren—Gardiner	.....
545.	Zent, Tom—Hysham	.....
551.	Rowland, Dave—Joliet	.....
557.	Lufborough, Lynn—Jordan	.....
564.	Leibach, Sheldon—Medicine Lake	.....
566.	McCabe, Paul—Medicine Lake	.....
568.	Matt, Bing—Arlee	.....
577.	Allerdings, Myron—Plevna	.....
588.	Sutton, Doyle—Reed Point	.....
629.	Staiger, Lee—St. Regis	.....
643.	Jensen, Ron—Troy	.....

## 220-YARD DASH

Record: :21.0, Larry Questad, Park, 1961.

### CLASS AA

11.	Schleining, Jim—Billings Sr.	.....
28.	Alt, Lee—Butte	.....
35.	Garrett, John—Butte	.....
40.	Verona, Sam—Butte	.....
44.	Mero, Dave—Flathead	.....
58.	Zins, Bill—Great Falls	.....
61.	Leffler, Mike—Great Falls Central	.....
68.	Schaefer, Paul—G. F. Russell	.....
70.	Thorn, Gary—G. F. Russell	.....
81.	Foley, Jerry—Helena	.....

### CLASS B

253.	Hufford, Roger—Baker	.....
299.	Hoover, Tom—Conrad	.....
301.	Pauli, Dave—Conrad	.....
305.	Yeager, Leland—Conrad	.....
331.	Kelley, Mike—Fort Benton	.....
339.	Pemberton, Bob—Harlowton	.....
346.	McGuire, Larry—Harlem	.....
347.	Turner, Robert—Harlem	.....
351.	Whirry, Gordon—Havre Central	.....
354.	Oblander, Dave—Huntley Project	.....
356.	Smiedala, Richard—Huntley Project	.....
365.	Hammond, Joe—Missoula Loyola	.....
369.	Kohler, Dave—Missoula Loyola	.....
370.	Loran, Pat—Missoula Loyola	.....
377.	Row, James—Malta	.....
391.	Gustafson, Jerel—Plentywood	.....
407.	Voorhees, Jim—Poplar	.....
408.	Zimmerman, Jim—Poplar	.....
412.	Dupuis, Rex—Polson	.....
418.	Stark, Andy—Polson	.....
424.	Jovanovich, Keith—Red Lodge	.....
433.	Goffena, Bob—Roundup	.....
440.	Crowe, Allan—Scobey	.....
448.	Larson, Sid—Shelby	.....
462.	Majerus, Tom—Valier	.....

### CLASS A

107.	Martin, George—Anaconda Central	.....
120.	Papka, Willard—Billings Central	.....
131.	Ogle, Rick—Bozeman	.....
144.	Eyre, Allen—Columbia Falls	.....
148.	Hill, Cork—Columbia Falls	.....
149.	Luce, Don—Columbia Falls	.....
160.	Robinson, Roy—Glasgow	.....
161.	Schye, Ted—Glasgow	.....
168.	Ziegler, Larry—Glendive	.....
178.	Stoenner, Greg—Hamilton	.....
188.	LaBounty, John—Havre	.....
200.	Lance, Rick—Laurel	.....
201.	Price, Tim—Laurel	.....
218.	Fink, Wayne—Livingston	.....
237.	Cerkovnik, Mike—Sidney	.....

### CLASS C

465.	Big Sam, Nelson—Arlee	.....
472.	Barrett, Joe—Augusta	.....
485.	Doney, Tom—Boulder	.....
488.	Campbell, Tom—Brady	.....
512.	Edwards, Cliff—Denton	.....
517.	Johnson, Bob—Dutton	.....
545.	Zent, Tom—Hysham	.....
546.	Butler, Doug—Joliet	.....
549.	Golden, Doug—Joliet	.....
557.	Lufborough, Lynn—Jordan	.....
562.	Washburn, Pat—Lima	.....
564.	Leibach, Sheldon—Medicine Lake	.....
566.	McCabe, Paul—Medicine Lake	.....
588.	Sutton, Doyle—Reed Point	.....
598.	Retterath, Don—Saco	.....
617.	Hanson, Russ—Simms	.....
629.	Staiger, Lee—St. Regis	.....
630.	Stuart, Leroy—State School	.....
643.	Jensen, Ron—Troy	.....
655.	Hansen, Bob—White Sulphur Springs	.....



## 440-YARD DASH

Record: :49.9, Frank Damaskos, Missoula, 1957; Russ Whindom, Butte, 1963.

### CLASS AA

2.	Collins, John—Billings Sr.
13.	Waltz, Mike—Billings Sr.
29.	Becker, Jim—Butte
35.	Garrett, John—Butte
40.	Verona, Sam—Butte
48.	Aronow, Jim—Great Falls
51.	Hahn, Randy—Great Falls
59.	Zins, Bob—Great Falls
72.	Boydston, Tom—Missoula Hellgate
93.	Gadbow, Darrell—Missoula Sentinel

### CLASS B

250.	Bickle, John—Baker
268.	Wiggen, Lee—Chester
269.	Bilger, William—Chinook
281.	Peebles, John—Choteau
287.	Yeager, Jerry—Choteau
302.	Rivinojo, Bob—Conrad
327.	Hert, Darrell—Forsyth
337.	Murphy, Don—Harlowton
339.	Pemberton, Bob—Harlowton
347.	Turner, Bob—Harlem
348.	Baker, Tom—Havre Central
356.	Smiedala, Richard—Huntley Project
365.	Hammond, Joe—Missoula Loyola
369.	Kohler, Dave—Missoula Loyola
392.	Kavon, Joe—Plentywood
394.	Pederson, Gary—Plentywood
396.	Andresen, Bartel—Poplar
412.	Dupuis, Rex—Polson
415.	Lambeth, Bob—Polson
424.	Jovanovich, Keith—Red Lodge
427.	Clairmont, Dennis—Ronan
438.	Raths, James—Roundup
441.	Ferestad, Dean—Scobey
447.	LuBuff, Len—Shelby
458.	Sveum, John—Sunburst
590.	Stiffarm, Doug—Harlem

### CLASS A

103.	Kortum, George—Anaconda
112.	Else, Wayne—Beaverhead Co.
113.	Glaus, Ken—Beaverhead Co.
122.	Schruth, Pat—Billings Central
138.	Ward, Ray—Bozeman
144.	Eyre, Allen—Columbia Falls
161.	Schye, Ted—Glasgow
187.	LaBounty, Dennis—Havre
200.	Lance, Rick—Laurel
218.	Fink, Wayne—Livingston
230.	Quigley, Mike—Miles City
233.	Scott, Mike—Powell County
240.	Schwabauer, Lloyd—Sidney
242.	Morris, Larry—Whitefish
247.	Spitzer, Bill—Wolf Point

### CLASS C

492.	Adams, Randy—Broadview
505.	Alexander, Ron—Colstrip
507.	Highland, Gary—Colstrip
510.	Bolling, Randy—Denton
535.	Anderson, Jim—Geyser
536.	Brasen, Chuck—Geyser
559.	Johnson, Dave—Kremlin
561.	Teegarden, Gene—Lima
565.	McCabe, Dean—Medicine Lake
566.	McCabe, Paul—Medicine Lake
574.	Linger, Earl—Park City
576.	French, Jamie—Plains
586.	Neuman, Bill—Power
598.	Retterath, Don—Saco
605.	Anders, Roy—Seeley-Swan
608.	Gum, Gordon—Sheridan
636.	Rittal, Tim—Terry
641.	Wooley, Jim—Townsend
643.	Jensen, Ron—Troy
649.	Ekness, Vern—Westby

## 880-YARD RUN

Record: 1:55.5, Randy Hyvonen, Red Lodge, 1963.

### CLASS AA

2.	Collins, John—Billings Sr.
16.	Ensign, Bob—Billings West
21.	Rohr, Roger—Billings West
32.	Duncan, Pat—Butte
37.	Keltz, Gary—Butte
59.	Zins, Bob—Great Falls
64.	Bautista, Rick—G. F. Russell
77.	Prezeau, Mike—Missoula Hellgate
85.	Lieberg, Eric—Helena
91.	Bauer, Don—Missoula Sentinel
93.	Gadbow, Darrell—Missoula Sentinel

### CLASS B

252.	Goroski, Jerome—Baker
260.	Richert, Steve—Big Timber
261.	Simmons, Jack—Big Timber
264.	Coats, Dean—Chester
268.	Wiggen, Lee—Chester
269.	Bilger, Bill—Chinook
294.	Quick, Larry—Circle
304.	Yeager, John—Conrad
310.	Brandvold, Steve—Cut Bank
316.	Lancaster, Grant—Eureka
321.	Erickson, Sid—Fairfield
323.	Bernot, Gene—Fairview
328.	Piseno, Rick—Forsyth
339.	Pemberton, Bob—Harlowton
363.	Brooke, Jim—Missoula Loyola
372.	Wherely, Mike—Loyola
379.	Wiltzen, Steve—Malta
385.	Erickson, David—Nashua
406.	Person, Larry—Poplar
434.	Gray, Rick—Roundup
450.	Taylor, Bill—Shelby
453.	Ballew, Ray—Sunburst
459.	Campbell, Gary—Thompson Falls
460.	Heater, Don—Thompson Falls
590.	Stiffarm, Doug—Harlem

### CLASS A

118.	Buller, Tom—Billings Central
139.	Watling, Paul—Bozeman
140.	Davis, Jack—Butte Central
141.	Klaboe, Rick—Butte Central
146.	Gookin, Larry—Columbia Falls
150.	Matheson, Gene—Columbia Falls
158.	Johnston, Mike—Glasgow
171.	Fullerton, Nick—Hamilton
173.	Hughes, Dave—Hamilton
187.	LaBounty, Dennis—Havre
190.	Yates, Spencer—Havre
223.	Sexton, Ed—Livingston
240.	Schwabauer, Lloyd—Sidney
243.	Murphy, Larry—Whitefish
246.	Bartel, Wayne—Wolf Point

### CLASS C

464.	Sunsted, Rodney—Antelope
496.	Curley, Lonnie—Busby
499.	Berger, Rick—Cascade
507.	Highland, Gary—Colstrip
509.	Baker, Bill—Denton
514.	Morigeau, Charles—Dixon
520.	Turns Plenty, Chester—Edgar
539.	Katzenberger, Loren—Highwood
540.	McGowan, John—Highwood
543.	James, Daryl—Hot Springs
572.	Greenwood, Clarence—Opheim
589.	Unruh, Gerald—Richey
593.	Merkle, Larry—Bozeman Rosary
605.	Anders, Roy—Seeley-Swan
607.	Day, Dan—Sheridan
619.	Jacobsen, Wade—Simms
624.	Foot, Clifford—St. Labre
634.	Hoagland, Gary—Terry
649.	Ekness, Vern—Westby
660.	Reichman, Ray—Willow Creek



# ONE-MILE RUN

Record: 4:16.5, Doug Brown, Red Lodge, 1962.

## CLASS AA

3.	Ehresman, Bill—Billings Sr.
6.	Litwin, Bruce—Billings Sr.
8.	Margrave, Dan—Billings Sr.
21.	Rohr, Roger—Billings West
33.	Eamon, Terry—Butte
37.	Keltz, Gary—Butte
64.	Bautista, Rick—G. F. Russell
85.	Lieberg, Eric—Helena
96.	Kinney, Mike—Missoula Sentinel
98.	MaGruder, Monte—Missoula Sentinel

## CLASS B

261.	Simmons, Jack—Big Timber
262.	Old Person, Carl—Browning
263.	Potts, Gallen—Browning
267.	Heimbigner, Dan—Chester
268.	Wiggen, Lee—Chester
269.	Bilger, Bill—Chinook
295.	Armstrong, Dean—Columbus
304.	Yeager, Jon—Conrad
309.	Anderson, Mike—Cut Bank
316.	Lancaster, Grant—Eureka
317.	Meeker, Dave—Eureka
323.	Berndt, Gene—Fairview
324.	Adams, Dale—Forsyth
328.	Piseno, Rick—Forsyth
335.	Davis, Roy—Harlowton
341.	Cresswell, Greg—Harlem
363.	Brooke, Jim—Loyola
379.	Wiltzen, Steve—Malta
398.	Cummins, Philip—Poplar
400.	Escarcega, Tom—Poplar
406.	Person, Larry—Poplar
411.	DuCharme, George—Polson
417.	Sanford, Tom—Polson
445.	Juel, Don—Scobey
453.	Ballew, Ray—Sunburst

## CLASS A

102.	Johnson, Howard—Anaconda
139.	Watling, Paul—Bozeman
146.	Gookin, Larry—Columbia Falls
152.	Rowles, Garry—Columbia Falls
159.	Paulson, John—Glasgow
171.	Fullerton, Nick—Hamilton
182.	Smith, Leroy—Hardin
187.	LaBounty, Dennis—Havre
190.	Yates, Spencer—Havre
193.	Roberts, Bill—Helena Central
217.	Fields, Dave—Livingston
219.	Jones, Rick—Livingston
228.	Nolley, Ken—Miles City
243.	Murphy, Larry—Whitefish
246.	Bartel, Wayne—Wolf Point

## CLASS C

473.	Ginther, Charles—Augusta
484.	DeMers, Tim—Boulder
486.	Mulvaney, Tom—Boulder
496.	Curley, Lonnie—Busby
499.	Berger, Rick—Cascade
505.	Alexander, Ron—Colstrip
507.	Highland, Jerry—Colstrip
522.	Jespersen, Bob—Ekalaka
524.	Stinseth, Ross—Ekalaka
525.	Peterson, John—Ennis
531.	Thompson, Larry—Froid
539.	Katzenberger, Loren—Highwood
563.	Skelton, Dave—Manhattan
570.	Majerus, Don—Moore
572.	Greenwood, Clarence—Opheim
591.	Williams, Ken—Broadus
619.	Jacobsen, Wade—Simms
624.	Footte, Clifford—St. Labre
646.	White, Nephi—Troy
660.	Reichman, Ray—Willow Creek

# 120-YARD HIGH HURDLES

Record: :14.7, Ken Jones, Missoula, 1963; Don Schmitz, Missoula, 1964.

## CLASS AA

4.	Goselin, Stan—Billings Sr.
9.	Moerer, Bruce—Billings Sr.
22.	Ross, Dave—Billings West
34.	Evans, Ron—Butte
38.	McGuiness, Dave—Butte
54.	Nebel, Bill—Great Falls
66.	Hendryx, Scott—G. F. Russell
73.	Broderick, Bill—Missoula Hellgate
78.	Rhinehart, Sid—Missoula Hellgate
94.	Henderson, Bill—Missoula Sentinel

## CLASS B

251.	Cody, Jim—Baker
271.	Brooke, Charles—Chinook
276.	Banis, LeRoy—Choteau
287.	Yeager, Gerry—Choteau
300.	Kronebusch, Rick—Conrad
306.	Engler, Bob—Corvallis
314.	Wetzel, Don—Cut Bank
344.	Johnson, Burton—Harlem
349.	Englehart, Steve—Havre Central
359.	Pease, Woody—Lodge Grass
364.	Corts, Pat—Missoula Loyola
373.	Ereaux, Roy—Malta
374.	Hungerford, Terry—Malta
388.	Bergh, Lyle—Plentywood
390.	Black, Jet—Plentywood
397.	Crowley, Darryl—Poplar
413.	Fulkerson, Bruce—Polson
414.	Holt, Ray—Polson
420.	Venet, Dan—Polson
422.	Alberi, David—Red Lodge
435.	Kowalczyk, Ken—Roundup
436.	Lacey, Alan—Roundup
446.	Morrison, John—Scobey
454.	Frost, Rick—Sunburst
591.	Rasmussen, Eric—Roundup

## CLASS A

104.	Neilsen, David—Anaconda
125.	Crouse, Keith—Bozeman
126.	Dogerton, Dana—Bozeman
136.	Staab, Jim—Bozeman
143.	Beckwith, Lee—Columbia Falls
155.	Brayko, Gary—Glasgow
160.	Robinson, Roy—Glasgow
162.	Trembley, Douglas—Glasgow
168.	Ziegler, Larry—Glendive
172.	Hatfield, Dennis—Hamilton
175.	LaSalle, Rich—Hamilton
210.	Hanley, Bill—Libby
216.	Evje, Gary—Livingston
234.	Anderson, David—Sidney
245.	Schwenke, Don—Whitefish

## CLASS C

469.	Nance, Alfred—Arlee
471.	Wolcott, Kelly—Arlee
494.	Conover, Steve—Broadview
510.	Bolling, Randy—Denton
526.	Stoltz, Chuck—Ennis
560.	Louis, Dwight—Lavina
575.	Peter, Jerry—Park City
576.	French, Jamie—Plains
604.	Seeve, Craig—Savage
615.	Gustafson, Gary—Simms
621.	Smith, Dave—Stanford
622.	Stokes, Dennis—Stanford
625.	Harper, John—St. Leo's
627.	Jensen, Jim—St. Regis
633.	Hellman, Bob—Terry
635.	Neumiller, Roger—Terry
637.	Schwartz, Curt—Terry
656.	Miller, Willie—White Sulphur Springs
659.	Jones, Allen—Wibaux
661.	Fowler, Russell—Wilsall



# 180-YARD LOW HURDLES

Record: :19.5, Roy Robinson, Glasgow, 1964.

## CLASS AA

4.	Goselin, Stan—Billings Sr.	143.
19.	Koontz, Dick—Billings West	156.
22.	Ross, Dave—Billings West	157.
34.	Evans, Ron—Butte	160.
38.	McGuinness, Dave—Butte	162.
55.	Palagi, Marty—Great Falls	168.
70.	Thorn, Gary—G. F. Russell	175.
73.	Broderick, Bill—Missoula Hellgate	195.
78.	Rhinehart, Sid—Missoula Hellgate	209.
94.	Henderson, Bill—Missoula Sentinel	210.

## CLASS B

251.	Cody, Jim—Baker	216.
254.	McMillian, Lynn—Baker	222.
266.	Hemmer, Robert—Chester	245.
271.	Brooke, Charles—Chinook	
283.	Sabo, Doug—Choteau	
285.	Waltermire, Jim—Choteau	
300.	Kronebusch, Rick—Conrad	
314.	Wetzel, Don—Cut Bank	
326.	Harris, Rick—Forsyth	
345.	MacGuire, Gary—Harlem	
349.	Englehart, Steve—Havre Central	
354.	Oblander, Dave—Huntley Project	
356.	Smiedala, Rich—Huntley Project	
359.	Pease, Woody—Lodge Grass	
364.	Corts, Pat—Missoula Loyola	
372.	Whereley, Mike—Missoula Loyola	
377.	Row, James—Malta	
388.	Bergh, Lyle—Plentywood	
390.	Black, Jet—Plentywood	
397.	Crowley, Darryl—Poplar	
413.	Fulkerson, Bruce—Polson	
414.	Holt, Ray—Polson	
420.	Venez, Dan—Polson	
421.	Webb, Craig—Polson	
436.	Lacey, Alan—Roundup	
454.	Frost, Rick—Sunburst	

## CLASS A

129.	Groepper, Jay—Bozeman	210.
130.	Kerby, Steve—Bozeman	216.
143.	Beckwith, Lee—Columbia Falls	222.
156.	Gallagher, Mike—Glasgow	245.
157.	Grobel, Steve—Glasgow	
160.	Robinson, Roy—Glasgow	
162.	Trembley, Douglas—Glasgow	
168.	Ziegler, Larry—Glendive	
175.	LaSalle, Rich—Hamilton	
195.	Altimus, Larry—Laurel	
209.	Childs, Mike—Libby	
210.	Hanley, Bill—Libby	
216.	Evje, Gary—Livingston	
222.	Prim, Mark—Livingston	
245.	Schwenke, Don—Whitefish	

## CLASS C

469.	Nance, Alfred—Arlee	604.
474.	Lucero, Chuck—Augusta	615.
489.	Gonzales, Ron—Bridger	629.
493.	Clark, Roy—Broadview	632.
494.	Conover, Steve—Broadview	633.
502.	Kuehler, Lyle—Centerville	637.
509.	Baker, Bill—Denton	647.
526.	Stoltz, Chuck—Ennis	
533.	Fisher, Warren—Gardiner	
549.	Golden, Doug—Joliet	
557.	Lufborough, Lynn—Jordan	
582.	Morton, Bill—Bigfork	
584.	Erickson, Bill—Power	
604.	Seeve, Craig—Savage	
615.	Gustafson, Gary—Simms	
629.	Staiger, Lee—St. Regis	
632.	Gardner, Ken—Terry	
633.	Hellman, Bob—Terry	
637.	Schwartz, Curt—Terry	
647.	Allen, Wayne—Victor	

# SHOT PUT

Record: 61' 1½", Bob Hawke, Butte, 1965.

## CLASS AA

5.	Jennison, Dave—Billings Sr.	164.
10.	Morrow, Dick—Billings Sr.	165.
26.	Whitaker, Clay—Billings West	170.
36.	Greene, Mike—Butte	180.
39.	Thomas, Ed—Butte	198.
47.	Wright, George—Flathead	221.
50.	Fahrman, Bill—Great Falls	224.
65.	Braden, Gary—G. F. Russell	227.
75.	Lewis, Gene—Missoula Hellgate	231.
76.	McGinnis, George—Missoula Hellgate	232.

## CLASS B

273.	Harbolt, William—Chinook	239.
274.	Lind, Jack—Chinook	
275.	Schellin, Robert—Chinook	
278.	Bouma, Ed—Choteau	
286.	Wiseman, Russ—Choteau	
289.	Kleppelid, Charles—Circle	
297.	Henderson, Steve—Columbus	
298.	Brkken, Harry—Conrad	
308.	Rasmussen, Jay—Corvallis	
311.	Harris, Mike—Cut Bank	
320.	Wick, Wayne—Eureka	
329.	Tormoehlen, John—Forsyth	
330.	McCowan, Irvin—Fort Benton	
333.	Tope, Rocky—Fort Benton	
357.	Clawson, Bill—Lodge Grass	
368.	Kenck, Harry—Missoula Loyola	
399.	Danielsen, Stan—Poplar	
403.	Martin, Rusty—Poplar	
404.	McAnally, Bob—Poplar	
426.	Rantala, Melvin—Red Lodge	
428.	Jensen, Pete—Ronan	
429.	Loman, Roy—Ronan	
432.	Byford, Roger—Roundup	
442.	Hagfeldt, Glen—Scobey	
455.	Hallingstad, Chuck—Sunburst	

## CLASS A

109.	Bergeson, Kirk—Beaverhead County	554.
117.	Bean, Rick—Billings Central	555.
132.	Sager, Bob—Bozeman	556.
149.	Luce, Don—Columbia Falls	557.
164.	Duffner, Paul—Glendive	594.
165.	Johnson, Kurt—Glendive	597.
170.	Conroy, Pat—Hamilton	609.
180.	Doane, Mark—Hardin	613.
198.	Evans, Wayne—Laurel	645.
221.	McQuay, Randy—Livingston	651.
224.	Gudmundson, Bob—Miles City	653.
227.	Neff, Douglas—Miles City	
231.	Munden, Randy—Powell County	
232.	Ryan, Dan—Powell County	
239.	Miller, Gary—Sidney	

## CLASS C

477.	McEwen, Wayne—Belgrade	651.
478.	Bowman, Russ—Belt	653.
481.	Allen, Jerry—Bigfork	
501.	Salo, Terry—Cascade	
504.	Melin, Mick—Clyde Park	
526.	Stoltz, Chuck—Ennis	
530.	McNeil, Bill—Froid	
550.	Larash, Marion—Joliet	
552.	Alley, Dave—Joplin	
554.	Meldrum, Lon—Joplin	
555.	Fitzgerald, Bob—Jordan	
556.	Hageman, Glenn—Jordan	
557.	Lufborough, Lynn—Jordan	
594.	Hubbard, Mike—Rosebud	
597.	Wolff, Fred—Ryegate	
609.	Hansen, Dave—Sheridan	
613.	Elwess, John—Simms	
645.	Waters, Bill—Troy	
651.	Tommerup, Randy—Westby	
653.	Buhrkarl, Larry—Whitehall	



## DISCUS THROW

Record: 180' 9½", Bob Hawke, Butte, 1965.

### CLASS AA

5.	Jennison, Dave—Billings Sr.	.....
15.	Wright, Loren—Billings Sr.	.....
26.	Whitaker, Clay—Billings West	.....
39.	Thomas, Ed—Butte	.....
41.	Andrews, Corky—Flathead	.....
43.	Lyons, Joe—Flathead	.....
47.	Wright, George—Flathead	.....
49.	Erickson, Glenn—Great Falls	.....
65.	Craden, Gary—G. F. Russell	.....
92.	Clawson, Jim—Missoula Sentinel	.....

### CLASS B

274.	Lind, Jack—Chinook	.....
275.	Schellin, Robert—Chinook	.....
276.	Banis, LeRoy—Choteau	.....
278.	Bouma, Ed—Choteau	.....
289.	Kleppeid, Charles—Circle	.....
297.	Henderson, Steve—Columbus	.....
306.	Engler, Bob—Corvallis	.....
311.	Harris, Mike—Cut Bank	.....
315.	Grob, Monty—Eureka	.....
322.	Henning, Larry—Fairfield	.....
330.	McCowan, Irvin—Fort Benton	.....
333.	Tope, Rocky—Fort Benton	.....
340.	Sedgwick, Jim—Harlowton	.....
353.	Krumhever, Gordon—Huntley Project	.....
368.	Kenck, Harry—Missoula Loyola	.....
378.	Slade, Dale—Malta	.....
381.	Emery, Mike—Mission	.....
387.	Kummerfeldt, Allen—Nashua	.....
399.	Danielsen, Stan—Poplar	.....
403.	Martin, Rusty—Poplar	.....
432.	Byford, Roger—Roundup	.....
437.	Moss, Sam—Roundup	.....
455.	Hallingstad, Chuck—Sunburst	.....
461.	Thurman, Mike—Thompson Falls	.....
662.	Rankin, Gary—Baker	.....

Record: 208' 8½", John Tushaus, Libby, 1962.

### CLASS AA

7.	Madsen, Jeff—Billings Sr.	.....
18.	Fox, Dick—Billings West	.....
24.	Ullman, Frank—Billings West	.....
30.	Brickett, Steve—Butte	.....
31.	Dennehy, Mick—Butte	.....
41.	Andrews, Corky—Flathead	.....
46.	Weed, Al—Flathead	.....
56.	Schlenke, Damon—Great Falls	.....
67.	Lewis, Kirby—G. F. Russell	.....
83.	Jones, Ken—Helena	.....

### CLASS B

255.	Pool, Randy—Baker	.....
258.	Dickson, Donald—Big Sandy	.....
275.	Schellin, Robert—Chinook	.....
279.	Lehnerz, Ron—Choteau	.....
289.	Klappellid, Charles—Circle	.....
296.	Henderson, Glen—Columbus	.....
299.	Hoover, Tom—Conrad	.....
306.	Engler, Bob—Corvallis	.....
312.	Howard, Bob—Cut Bank	.....
313.	Howard, Harvey—Cut Bank	.....
318.	Osler, Loran—Eureka	.....
330.	McCowan, Irvin—Fort Benton	.....
333.	Tope, Rocky—Fort Benton	.....
338.	Lorenzen, Bill—Harlowton	.....
358.	Falls Down, Wesley—Lodge Grass	.....
360.	Yarlott, Chuck—Lodge Grass	.....
371.	Opitz, Jim—Missoula Loyola	.....
375.	Lefdaahl, Vaughn—Malta	.....
380.	Blush, Bob—Mission	.....
386.	Geer, Zane—Nashua	.....
401.	Jensen, Bill—Poplar	.....
409.	Akroyd, Richard—Polson	.....
423.	Berta, Pete—Red Lodge	.....
443.	Harmon, Barry—Scobey	.....
456.	Kimmet, Ron—Sunburst	.....

### CLASS A

108.	Rowe, Bob—Anaconda Central	.....
109.	Bergeson, Kirk—Beaverhead County	.....
117.	Bean, Rick—Billings Central	.....
149.	Luce, Don—Columbia Falls	.....
163.	Bjerkreim, Tom—Glendive	.....
165.	Johnson, Curt—Glendive	.....
197.	Easton, Rex—Laurel	.....
198.	Evans, Wayne—Laurel	.....
199.	Hedstrom, Ole—Laurel	.....
208.	Browne, Terry—Libby	.....
221.	McQuay, Randy—Livingston	.....
226.	McKay, Duncan—Miles City	.....
227.	Neff, Douglas—Miles City	.....
239.	Miller, Gary—Sidney	.....
245.	Schwenke, Don—Whitefish	.....

### CLASS C

470.	Rasmussen, Bob—Arlee	.....
475.	Nose, Bob—Belfry	.....
476.	Ungefug, Larry—Belfry	.....
477.	McEwen, Wayne—Belgrade	.....
478.	Bowman, Russ—Belt	.....
481.	Allen, Jerry—Bigfork	.....
490.	Schwend, Lonnie—Bridger	.....
501.	Salo, Terry—Cascade	.....
504.	Melin, Mick—Clyde Park	.....
521.	Howell, Mike—Ekalaka	.....
526.	Stoltz, Chuck—Ennis	.....
528.	Hatfield, Bob—Flaxville	.....
530.	McNeil, Bill—Froid	.....
553.	Heydon, Ken—Joplin	.....
554.	Meldrum, Lon—Joplin	.....
556.	Hageman, Glenn—Jordan	.....
581.	Wager, Don—Plevna	.....
610.	Massey, Rance—Sheridan	.....
620.	Haker, Jack—Sanford	.....
645.	Waters, Bill—Troy	.....

## JAVELIN THROW

### CLASS A

105.	Reilly, Dan—Anaconda	.....
128.	Evans, Mark—Bozeman	.....
133.	Smiley, Jim—Bozeman	.....
134.	Sortor, John—Bozeman	.....
147.	Hill, Dev—Columbia Falls	.....
151.	Niese, Rich—Columbia Falls	.....
154.	Brandon, Curt—Glasgow	.....
160.	Robinson, Roy—Glasgow	.....
165.	Johnson, Curt—Glendive	.....
179.	Taylor, Courtney—Hamilton	.....
183.	Sonnenberg, Tim—Hardin	.....
207.	Wood, Doug—Lewistown	.....
209.	Childs, Mike—Libby	.....
230.	Quigley, Dennis—Miles City	.....
244.	Rubino, Mike—Whitefish	.....

### CLASS C

470.	Rasmussen, Bob—Arlee	.....
479.	Cummins, Ron—Belt	.....
487.	Champagne, Bob—Box Elder	.....
519.	Stands, Ben—Edgar	.....
521.	Howell, Mike—Ekalaka	.....
527.	Williams, Dennis—Ennis	.....
529.	Tryan, Dan—Flaxville	.....
532.	Waters, Pat—Froid	.....
544.	Caldwell, Brad—Hysham	.....
581.	Wager, Don—Plevna	.....
585.	Fitzgerald, Ross—Power	.....
589.	Unruh, Gerald—Richey	.....
592.	McKay, Jim—Bozeman Rosary	.....
606.	Thant, Jerry—Shepherd	.....
610.	Massey, Rance—Sheridan	.....
615.	Gustafson, Gary—Simms	.....
616.	Gustafson, Dave—Simms	.....
631.	Mason, Dan—Superior	.....
639.	Jacobson, Gary—Three Forks	.....
642.	Ingraham, Don—Troy	.....



## HIGH JUMP

Record: 6' 6½", Mike Huggins, Flathead, 1960.

### CLASS AA

1. Ashcraft, John—Billings Sr.
12. Uhren, Jeff—Billings Sr.
14. Winslow, Calvin—Billings Sr.
27. Zielke, David—Billings West
53. Lee, John—Great Falls
62. McDowell, Mickey—G. F. Central
74. Green, Fred—Missoula Hellgate
75. Lewis, Gene—Missoula Hellgate
82. Fred, John—Helena
84. Lane, Jim—Helena
86. Morrow, Tim—Helena
97. Kirkpatrick, Ken—Sentinel

### CLASS B

256. Vanderpan, Terry—Baker
259. Reichelt, Vern—Big Sandy
261. Simmons, Jack—Big Timber
271. Brooke, Charles—Chinook
274. Lind, Jack—Chinook
276. Banis, LeRoy—Choteau
284. Shannon, Charles—Choteau
299. Hoover, Tom—Conrad
300. Kronebusch, Rick—Conrad
306. Engler, Bob—Corvallis
314. Wetzel, Don—Cut Bank
316. Lancaster, Grant—Eureka
332. Scott, Don—Fort Benton
338. Lorenzen, Bill—Harlowton
344. Johnson, Burton—Harlem
362. Banaugh, Bob—Missoula Loyola
367. Joseph, Jack—Missoula Loyola
389. Berg, Lyle—Plentywood
392. Kavon, Joe—Plentywood
395. Tange, Pat—Plentywood
401. Jensen, Bill—Poplar
423. Berto, Pete—Red Lodge
433. Goffena, Bob—Roundup
436. Lacey, Alan—Roundup
446. Morrison, John—Scobey
452. Felde, Vic—Stevensville

Record: 22' 8½", Ken Nelson, Missoula, 1955.

### CLASS AA

4. Goselin, Stan—Billings Sr.
23. Treat, Dennis—Billings West
25. Watne, Harold—Billings West
38. McGuinness, Dave—Butte
55. Palagi, Marty—Great Falls
68. Schaefer, Paul—G. F. Russell
78. Rhinehart, Sid—Missoula Hellgate
79. Smuin, Steve—Missoula Hellgate
86. Morrow, Tim—Helena
90. Stein, Charles—Helena

### CLASS B

254. McMillan, Lynn—Baker
270. Blackner, Pat—Chinook
271. Brooke, Charles—Chinook
273. Harbolt, William—Chinook
285. Waltermire, Jim—Choteau
293. Stundahl, Don—Circle
299. Hoover, Tom—Conrad
303. Robinson, Tom—Conrad
305. Yeager, Leland—Conrad
314. Wetzel, Don—Cut Bank
332. Scott, Don—Fort Benton
334. Althaus, Jim—Harlowton
348. Baker, Tom—Havre Central
354. Oblander, Dave—Huntley Project
356. Smiedala, Rich—Huntley Project
372. Wherely, Mike—Missoula Loyola
384. Posivio, Bill—Mirson
391. Gustafson, Jerel—Plentywood
394. Pederson, Gary—Plentywood
402. Lawson, Don—Poplar
410. Davis, Dean—Polson
425. O'Shea, Jim—Red Lodge
430. Sager, Roland—Ronan
431. Branum, Keith—Roundup
452. Felde, Vic—Stevensville

### CLASS A

101. Grubich, Bill—Anaconda
127. Duncan, Wally—Bozeman
137. Wantulok, Jim—Bozeman
143. Beckwith, Lee—Columbia Falls
166. Pauley, Greg—Glendive
175. LaSalle, Rich—Hamilton
184. Aageson, Dave—Havre
185. Chestnut, Tom—Havre
189. Nelson, Mark—Havre
211. Managhan, Mike—Libby
212. Munyan, Steve—Libby
213. Waylett, Pete—Libby
215. Crosby, Glen—Livingston
220. LeRossignol, Curt—Livingston
225. Martin, Gary—Miles City

### CLASS C

467. Couture, Wally—Arlee
478. Bowman, Russ—Belt
488. Campbell, Tom—Brady
490. Schwend, Lonnie—Bridger
492. Adams, Randy—Broadview
526. Stoltz, Chuck—Ennis
534. Engellant, Ed—Geraldine
535. Anderson, Jim—Geyser
537. Morrison, Colin—Granite County
546. Butler, Doug—Joliet
557. Lufborough, Lynn—Jordan
558. Schmidt, Stewart—Jordan
561. Teegarden, Gene—Lima
562. Washburn, Pat—Lima
568. Schlabs, Terry—Medicine Lake
573. Selvig, Ken—Outlook
587. Timmerman, Ray—Power
638. Hoffman, Mike—Three Forks
640. Lane, Jack—Three Forks
658. Bruski, Lawrence—Wibaux

## BROAD JUMP

### CLASS A

115. Taylor, Phil—Beaverhead County
122. Schrueth, Pat—Billings Central
127. Duncan, Wally—Bozeman
142. Matthews, Jake—Butte Central
145. Friske, Jim—Columbia Falls
156. Gallagher, Mike—Glasgow
166. Pauley, Greg—Glendive
169. Clack, Allen—Hamilton
175. LaSalle, Rich—Hamilton
178. Stoenner, Greg—Hamilton
181. Egniew, Tom—Hardin
207. Wood, Doug—Lewistown
216. Evje, Gary—Livingston
235. Auch, Claude—Sidney
241. Smith, Eugene—Sidney

### CLASS C

472. Barrett, Joe—Augusta
480. Probst, Earl—Belt
490. Schwend, Lonnie—Bridger
503. Medvec, Mick—Centerville
510. Bolling, Randy—Denton
517. Johnson, Bob—Dutton
526. Stoltz, Chuck—Ennis
533. Fisher, Warren—Gardiner
541. Barnard, Pete—Hinsdale
561. Teegarden, Gene—Lima
564. Holm, Keith—Medicine Lake
567. Rueter, Don—Medicine Lake
596. Duffey, Terry—Ryegate
597. Wolff, Fred—Ryegate
599. Larson, Bruce—Sacred Heart of Miles City
602. Rehbein, Jim—Sacred Heart of Miles City
623. Brey, Doug—St. Labre
644. Leighty, Howard—Troy
648. Mahe, Gary—Victor
652. Baier, Tony—Whitehall



## POLE VAULT

Record: 13' 7", John Peterson, Helena, 1964.

### CLASS AA

17.	Fisher, Gene—Billings West .....
42.	Bain, Doug—Flathead .....
45.	Olson, Les—Flathead .....
52.	LaMance, Dennis—Great Falls .....
57.	Todd, Jim—Great Falls .....
60.	Furlong, Dick—Great Falls Central .....
63.	Willits, Chuck—G. F. Central .....
88.	Reber, Bryant—Helena .....
89.	Smith, Mel—Helena .....
100.	Reynolds, Dan—Sentinel .....

### CLASS B

248.	Hudson, Doug—Absarokee .....
249.	Warner, Neven—Absarokee .....
256.	Vanderpan, Terry—Baker .....
257.	Wenz, Brad—Baker .....
265.	Harsn, Larry—Chester .....
266.	Hemmer, Robert—Chester .....
277.	Beaudean, Paul—Choteau .....
282.	Sabo, Cliff—Choteau .....
283.	Sabo, Doug—Choteau .....
288.	Hoover, Tom—Circle .....
301.	Pauli, Dave—Conrad .....
307.	Fullerton, John—Corvallis .....
325.	Buckley, Jerry—Forsyth .....
342.	Green, Mike—Harlem .....
344.	Johnson, Burton—Harlem .....
360.	Yarlott, Chuck—Lodge Grass .....
361.	Ballas, Dan—Missoula Loyola .....
376.	Mann, Smuck—Malta .....
382.	Fry, Charlie—Mission .....
383.	Gallup, Lyman—Mission .....
393.	Matsen, Kurt—Plentywood .....
419.	Sturm, Roy—Polson .....
439.	Thomas, Sterling—Roundup .....
444.	Holum, Art—Scobey .....
451.	Westermark, Gary—Shelby .....

### CLASS A

106.	Lovell, Ben—Anaconda Central .....
114.	Savalstad, Roy—Beaverhead County .....
116.	Agnew, John—Billings Central .....
119.	Monahan, Dak—Billings Central .....
124.	Cook, Terry—Bozeman .....
135.	Spring, Bill—Bozeman .....
137.	Wantulok, Jim—Bozeman .....
167.	Selman, Jim—Glendive .....
168.	Ziegler, Larry—Glendive .....
177.	Snider, Ed—Hamilton .....
186.	Kiesling, Roger—Havre .....
191.	Jacques, Nick—Helena Central .....
194.	Allen, Bill—Laurel .....
206.	Southworth, Jim—Lewistown .....
214.	Collier, Bill—Livingston .....
229.	Sprandel, Doug—Miles City .....
236.	Carpenter, Jim—Sidney .....
245.	Schwenke, Don—Whitefish .....

### CLASS C

463.	Richardson, Tim—Antelope .....
466.	Blyton, David—Arlee .....
468.	Matt, Bing—Arlee .....
475.	Nose, Bob—Belfry .....
483.	Williamson, Lavon—Bigfork .....
494.	Conover, Steve—Broadview .....
500.	Keyes, Don—Cascade .....
538.	Morrison, Larry—Granite County .....
542.	Cross, Wes—Hot Springs .....
571.	Lear, Cal—Musselshell .....
579.	Hecker, Laverne—Plevna .....
595.	Polich, Don—Rosebud .....
603.	Neese, Alan—Savage .....
614.	Guill, Randy—Simms .....
618.	Jacobsen, Jim—Simms .....
621.	Smith, Dave—Stanford .....
625.	Harper, John—St. Leo's .....
627.	Jensen, Jim—St. Regis .....
629.	Staiger, Lee—St. Regis .....
632.	Gardner, Ken—Terry .....
650.	McCall, Dan—Westby .....
656.	Miller, Willie—White Sulphur Springs .....

## 880-YARD RELAY RACE

Record: 1:29.8, Great Falls, 1965.

### CLASS AA

2,	4,	11,	13—Billings Sr. ....
28,	29,	35,	40—Butte .....
48,	51,	55,	58—Great Falls .....
68,	69,	71,	70—Great Falls Russell .....
80,	81,	87,	90—Helena .....
91,	93,	95,	99—Missoula Sentinel .....

### CLASS B

250,	253,	254,	255—Baker .....
271,	272,	273,	274—Chinook .....
280,	281,	285,	287—Choteau .....
288,	290,	291,	292—Circle .....
299,	300,	302,	305—Conrad .....
343,	345,	346,	590—Harlem .....
336,	337,	338,	339—Harlowton .....
348,	349,	350,	351—Havre Central .....
352,	354,	355,	356—Huntley Project .....
365,	366,	369,	370—Missoula Loyola .....
380,	382,	383,	384—Mission .....
396,	405,	407,	408—Poplar .....
412,	413,	416,	420—Polson .....
431,	433,	434,	436—Roundup .....
454,	456,	457,	458—Sunburst .....

### CLASS A

110,	111,	112,	113—Beaverhead County .....
120,	121,	122,	123—Billings Central .....
125,	129,	130,	131—Bozeman .....
143,	144,	148,	149—Columbia Falls .....
153,	156,	160,	161—Glasgow .....
174,	175,	176,	178—Hamilton .....
196,	200,	201,	202—Laurel .....
203,	204,	205,	207—Lewistown .....
235,	237,	238,	241—Sidney .....

### CLASS C

465,	468,	469,	471—Arlee .....
495,	496,	497,	498—Busby .....
510,	511,	512,	513—Denton .....
515,	516,	517,	518—Dutton .....
546,	547,	548,	549—Joliet .....
565,	566,	567,	569—Medicine Lake .....
577,	578,	579,	580—Plevna .....
582,	583,	584,	586—Power .....
599,	600,	601,	602—Sacred Heart of Miles City .....
607,	608,	611,	612—Sheridan .....
626,	627,	628,	629—St. Regis .....
654,	655,	656,	657—White Sulphur Springs .....



# SCORE CARD

NOTE—Score 5 points for first place, 4 for second place, 3 for third place, 2 for fourth place, 1 for fifth place, including relay.

	100-yard Dash	220-yard Dash	440-yard Dash	880-yard Run	One Mile Run	Discus Throw	Pole Vault	High Jump	Broad Jump	120-yard Hurdles	180-yard Hurdles	Shot Put	Javelin Throw	Relay 880-yard	TOTAL
CLASS AA															
Billings Senior .....															
Billings West .....															
Butte Public .....															
Flathead of Kalispell .....															
Great Falls Central .....															
Great Falls .....															
Great Falls Russell .....															
Helena .....															
Missoula Hellgate .....															
Missoula Sentinel .....															
CLASS A															
Anaconda .....															
Anaconda Central .....															
Beaverhead of Dillon .....															
Billings Central .....															
Bozeman .....															
Butte Central .....															
Columbia Falls .....															
Custer of Miles City .....															
Dawson of Glendive .....															
Fergus of Lewistown .....															
Glasgow .....															
Hamilton .....															
Hardin .....															
Havre .....															
Helena Central .....															
Laurel .....															
Libby .....															
Park of Livingston .....															
Powell of Deer Lodge .....															
Sidney .....															
Whitefish .....															
Wolf Point .....															
CLASS B															
Absarokee .....															
Baker .....															
Big Sandy .....															
Big Timber .....															
Browning .....															
Chester .....															
Chinook .....															
Choteau .....															
Circle .....															
Columbus .....															
Conrad .....															
Corvallis .....															
Cut Bank .....															
Eureka .....															
Fairfield .....															
Fairview .....															
Forsyth .....															
Fort Benton .....															
Harlem .....															
Harlowton .....															



## SCORE CARD—(continued)

NOTE—Score 5 points for first place, 4 for second place, 3 for third place, 2 for fourth place, 1 for fifth place, including relay.

[illegible]



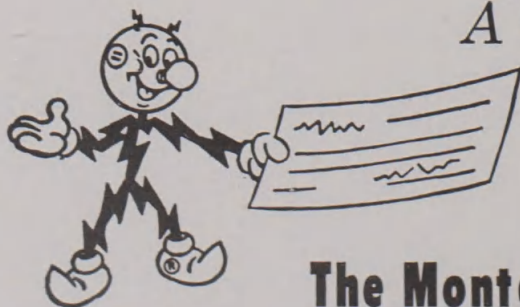
Complete Sporting Goods — Golf, Fishing, Hunting Equipment  
*See the World's Largest Fishing  
Tackle Board!*



Thousands of Items to Choose  
from!  
**BOB WARD & SONS**  
321 No. Higgins

## Montana Interscholastic Track and Field Records

Event	Record	Year	Holder
100-yard Dash .....	9.6.....	1961	Lawrence Questad ..... Livingston
220-yard Dash .....	21.0.....	1961	Lawrence Questad ..... Livingston
440-yard Dash .....	49.9.....	1957	Frank Damaskos ..... Missoula Sentinel
	49.9.....	1963	Russ Whindom ..... Butte
880-yard run .....	1:55.5.....	1963	Randy Hyvonen ..... Red Lodge
Mile Run .....	4:16.5.....	1962	Doug Brown ..... Red Lodge
120-yard High Hurdles .....	14.7.....	1963	Ken Jones ..... Missoula Sentinel
	14.7.....	1964	Don Schmitz ..... Missoula Sentinel
180-yard Low Hurdles .....	19.5.....	1964	Roy Robinson ..... Glasgow
Shot Put .....	61' 6½".....	1965	Bob Hawke ..... Butte
Discus Throw .....	180' 9½".....	1965	Bob Hawke ..... Butte
Javelin Throw .....	208' 8½".....	1962	John Tushaus ..... Libby
Pole Vault .....	13' 7".....	1964	John Peterson ..... Helena
High Jump .....	6' 6½".....	1960	Mike Huggins ..... Kalispell
Broad Jump .....	22' 8⅞".....	1955	Ken Nelson ..... Missoula Sentinel
880-yard Relay .....	1:29.8.....	1965	Great Falls (Commie Little, Dave Nebel, Marty Palagi, Gary Thorn)



*A tax-paying partner  
in every community  
we serve*

**The Montana**



**Power Company**



# The Record Holders

## SHOT PUT, DISCUS



**BOB HAWKE**

Butte, 1965

Shot Put: 61' 11½"

Discus: 180' 9½"

## LOW HURDLES



**ROY ROBINSON**

Glasgow, 1964  
:19.5



## TINY TEE

MINIATURE GOLF COURSE

Trampolines — Tandem Bikes  
Miniature Golf

Located off Highway 93  
Behind Holiday Village



# The Record Holders

## DASHES



### LARRY QUESTAD

Livingston, 1961

100—:09.6

220—:21.0

## 880-YARD RELAY



### GREAT FALLS, 1965

(l. to r.: Commie Little, Marty Palagi, Dave Nebel, Gary Thorn)  
1:29.8

## KGVO RADIO

Follow complete Inter-scholastic Broadcasts on:

KBMN Radio—Bozeman

KCAP Radio—Helena

KBOW Radio—Butte

KGVO Radio—Missoula



## KGVO-TV

Channel 13

Interscholastic Coverage:

Thursday — 5:00-5:15 p.m.

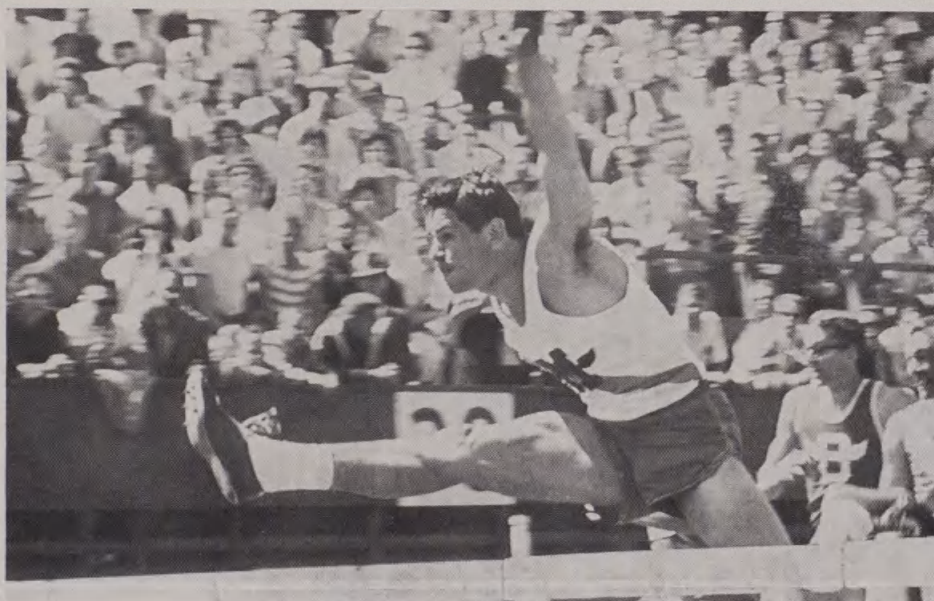
Friday — 5:15-5:30 p.m.

Saturday — 3:15-3:30 p.m.

With Paul Meissner,  
Milt Schwenk and  
Vi Thomson



# The Record Holders



Schmitz



## HIGH HURDLES

**KEN JONES (left)**

Missoula Sentinel, 1963

**DON SCHMITZ**

Missoula Sentinel, 1964

:14.7

**MISSOULA'S COMPLETE  
SPORTING GOODS STORE**



**Holiday Village Shopping Center  
MISSOULA, MONTANA**

George M. Fenner

Phone 549-5691



# The Record Holders

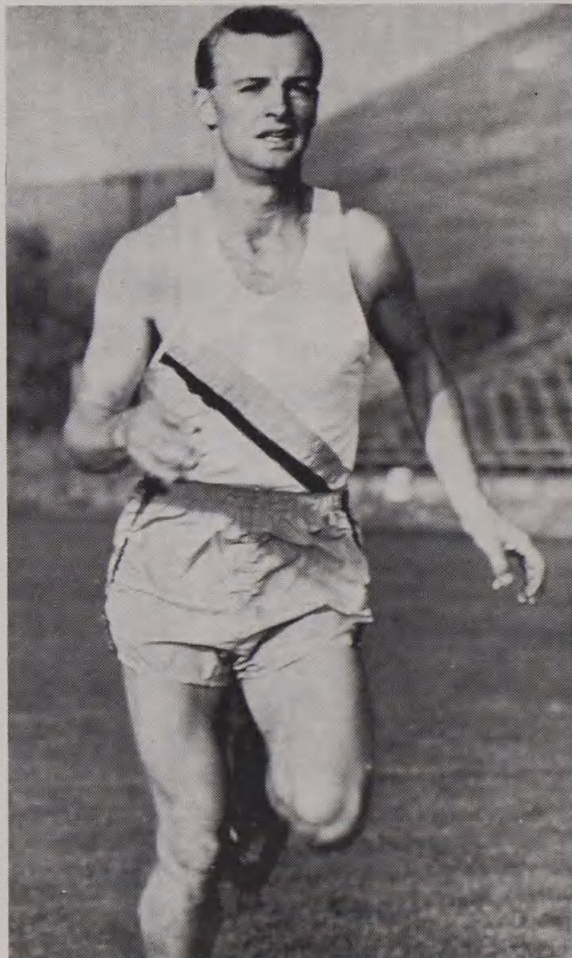
## 880-YARD RUN



**RANDY HYVONEN**

Red Lodge, 1963  
1:55.5

## MILE RUN



**DOUG BROWN**

Red Lodge, 1962  
4:16.5

LEVI  
SLIM  
FITS

TRADITIONAL  
SHIRTS

*Yandt's*  
MEN'S WEAR

403 N. Higgins

EVERYTHING FOR YOUNG MEN



# The Record Holders

**440**



**FRANK DAMASKOS**  
Missoula Sentinel, 1957

**RUSS WHINDOM (top)**  
Butte, 1963  
:49.9

## **POLE VAULT**



**JOHN PETERSON**

Helena, 1964  
13' 7"

WELCOME VISITORS

### **BROADWAY RESTAURANT**

Earl and Margaret Bachmeier

PHONE 549-2797

123 E. Broadway

City Center on Highway 10



# The Record Holders...

## BROAD JUMP



**KEN NELSON**

Missoula Sentinel, 1955

22' 8 1/8"

## HIGH JUMP

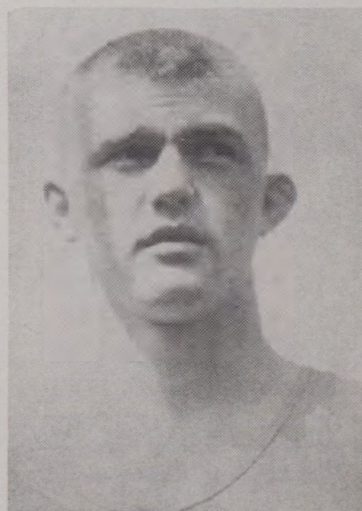


**MIKE HUGGINS**

Kalispell, 1960

6' 6 1/2"

## JAVELIN



**JOHN TUSHAUS**

Libby, 1962

208' 8 1/2"

*Buttreys*

### FASHION SHOP

Open Monday and Friday 'Til 9

Where Fashion Newness Is Our Business

Downtown Missoula



# State High School Track Champions of the Past...

1904-1965

1904..... Missoula County	1936..... Butte Public	1956—"AA"..... Missoula County
1905..... Butte Public	1937..... Butte Public	"A"..... Havre
1906..... Anaconda	1938..... Butte Public	"B"..... Polson
1907..... Flathead County	1939—"A"..... Missoula County	"C"..... Broadwater County
1908..... Missoula County	"B"..... Sheridan	1957—"AA"..... Missoula County
1909..... Helena	1940—"A"..... Missoula County	"A"..... Sidney
1910..... Gallatin County	"B"..... Plains	"B"..... Hamilton
1911..... Gallatin County	1941—"A"..... Missoula County	"C"..... Cascade
1912..... Gallatin County	"B"..... Lincoln County	1958—"AA"..... Missoula County
1913..... Gallatin County	1942—"A"..... Missoula County	"A"..... Sidney
1914..... Gallatin County	"B"..... Columbus	"B"..... Whitefish
1915..... Missoula County	1943..... (No play)	"C"..... Troy
1916..... Missoula County	1944..... (No play)	1959—"AA"..... Park County
1917..... (No play)	1945..... (No play)	"A"..... Sidney
1918..... Stevensville	1946—"A"..... Missoula County	"B"..... Hamilton
1919..... Butte Public	"B"..... Libby	"C"..... Broadwater County
1920..... Butte Public	1947—"A"..... Missoula County	1960—"AA"..... Helena
1921..... Butte Public	"B"..... Libby	"A"..... Hardin
1922..... Great Falls	1948—"A"..... Billings	"B"..... Loyola, Missoula
1923..... Great Falls	"B"..... Hamilton	"C"..... Plains
1924..... Butte Public	1949—"A"..... Missoula County	1961—"AA"..... Billings
1925..... Butte Public	"B"..... Victor	"A"..... Custer County
1926..... Missoula County	1950—"A"..... Missoula County	"B"..... Loyola, Missoula
1927..... Butte Public	"B"..... Hamilton	"C"..... Troy
1928..... Butte Public	1951—"A"..... Missoula County	1962—"AA"..... Great Falls
1929..... Great Falls	"B"..... Hamilton	"A"..... Custer County
1930..... Missoula County	1952—"A"..... Helena	"B"..... Red Lodge
1931..... Butte Public	"B"..... Polson	"C"..... Sheridan
1932..... Missoula County	1953—"A"..... Missoula County	1963—"AA"..... Butte Public
1933..... Butte Public	"B"..... Fairview	"A"..... Glasgow
1934..... Missoula County	1954—"AA"..... Missoula County	"B"..... Red Lodge
1935..... Butte Public	"A"..... Custer County	"C"..... Sheridan
	"B"..... Whitefish	1964—"A"..... Missoula Sentinel
	1955—"AA"..... Missoula County	"A"..... Glasgow
	"A"..... Custer County	"B"..... Polson
	"B"..... Polson	"C"..... Medicine Lake
		1965—"AA"..... Great Falls
		"A"..... Glasgow
		"B"..... Polson
		"C"..... Granite County



## 55 YEARS OF SERVICE

The Best in Savings and Home Loan Services

# WESTERN MONTANA BUILDING & LOAN

"Montana's Largest Savings Association"

Savings Center Building and South Side Savings Center



# Records by Divisions . . .

## CLASS AA (Since 1904)

Event	Record	Year	Holder
100-yard Dash	9.6	1961	Larry Questad ..... Livingston*
220-yard Dash	21.0	1961	Larry Questad ..... Livingston*
440-yard Run	49.9	1957	Frank Damaskos ..... Missoula Sentinel*
	49.9	1963	Russ Whindom ..... Butte*
880-yard Run	1:57.0	1965	Branch Brady ..... Great Falls
Mile Run	4:24.0	1965	Branch Brady ..... Great Falls
120-yard High Hurdles	14.7	1963	Ken Jones ..... Missoula Sentinel*
	14.7	1964	Don Schmitz ..... Missoula Sentinel*
180-yard Low Hurdles	19.6	1953	Conrad Orr ..... Missoula Sentinel
	19.6	1961	Larry Questad ..... Livingston
	19.6	1962	Dale Jackson ..... Great Falls
Shot Put	61' 6½"	1965	Bob Hawke ..... Butte*
Discus Throw	180' 9½"	1965	Bob Hawke ..... Butte*
Javelin Throw	203' 8¾"	1960	Ken Christison ..... Kalispell
Pole Vault	13' 7"	1964	John Peterson ..... Helena*
Broad Jump	22' 8½"	1955	Ken Nelson ..... Missoula Sentinel*
High Jump	6' 6½"	1960	Mike Huggins ..... Kalispell*
880-yard Relay	1:29.8	1965	..... Great Falls*
			Gary Thorn
			Commie Little
			Dave Nebel
			Marti Palagi

## CLASS A (Since 1954)

Event	Record	Year	Holder
100-yard Dash	9.9	1960	Ray Opp ..... Glendive
220-yard Dash	21.8	1961	Joe Lloyd ..... Great Falls Central
440-yard Dash	48.8	1963	Glenn Havskjold ..... Havre
	(Billings)		
880-yard Run	1:59.0	1965	Ed Kanduch ..... Anaconda
Mile Run	4:27.8	1965	Ed Kanduch ..... Anaconda
120-yard High Hurdles	15.2	1964	Gus Schultz ..... Lewistown
180-yard Low Hurdles	19.5	1964	Roy Robinson ..... Glasgow*
Shot Put	56' 9½"	1965	Tony Welzenbach ..... Wolf Point
Discus Throw	165' 1½"	1965	Steve Stiller ..... Havre
Javelin Throw	205' 6"	1964	LeRoy Lodinoff ..... Whitefish
Pole Vault	13' 6½"	1964	Andy Steben ..... Bozeman
High Jump	6' 4"	1962	Don Dundas ..... Miles City
Broad Jump	21' 11½"	1961	Robert Tate ..... Hardin
880-yard Relay	1:32.0	1963	..... Havre
	(Billings)		
	1:32.0	1964	..... Glasgow
			John Heberly
			Lowell Gorseth
			Glenn Havskjold
			Richard Davey
			Rich Kinzell
			Dennis Nixdorf
			Ted Schye
			Roy Robinson

\*—Interscholastic Record.

NOTE—Havskjold's mark was set when Class A schools met at Billings in 1963 and does not count as an Interscholastic Record.



# Records by Divisions continued

## CLASS B (Since 1939)

Event	Record	Year	Holder
100-yard Dash .....	10.0.....	1961	Ronald Plummer ..... Loyola of Missoula
	10.0.....	1962	John Row ..... Malta
220-yard Dash .....	21.7.....	1963	Rick Friez ..... Forsyth
440-yard Dash .....	50.5.....	1959	Bill Lowney ..... Anaconda Central
	50.5.....	1963	Bill Lodge ..... Red Lodge
880-yard Run .....	1:55.5.....	1963	Randy Hyvonen ..... Red Lodge*
Mile Run .....	4:16.5.....	1962	Doug Brown ..... Red Lodge*
120 High Hurdles .....	14.9.....	1961	Cliff Neighbors ..... Harlowton
	14.9.....	1962	Robert Beason ..... Circle
180 Low Hurdles .....	20.2.....	1961	Cliff Neighbors ..... Harlowton
Shot Put .....	55' 3/8".....	1958	Robert Frisbee ..... Cut Bank
Discus Throw .....	153' 3 1/2".....	1961	Douglas Derienfield ..... Huntley Project
Javelin Throw .....	208' 8 1/2".....	1962	John Tushaus ..... Libby*
Pole Vault .....	13' 2 1/2".....	1964	Pat Brooke ..... Loyola of Missoula
Broad Jump .....	21' 11 1/2".....	1964	Mike Shoquist ..... Fairfield
High Jump .....	6' 3".....	1940	Steve Muchmore ..... Drummond
880-yard Relay .....	1:32.7.....	1959	..... Hamilton
			Dave Hedditch
			Gary Spannuth
			Bill Hettrick
			Gordon Pagenkopf
	1:32.7.....	1964	..... Polson
			Ron Gipe
			Keith Smith
			Rick Lund
			Rick Straus

\*Interscholastic Record.

## CLASS C (Since 1956)

Event	Record	Year	Holder
100-yard Dash .....	10.0.....	1957	James Grasky ..... Sacred Heart of Miles City
220-yard Dash .....	22.2.....	1957	Gale Weidner ..... Troy
440-yard Dash .....	50.3.....	1964	Tom Hafele ..... Richey
880-yard Run .....	1:59.9.....	1962	Raymond Harris ..... Colstrip
Mile Run .....	4:33.8.....	1965	Clarence Greenwood ..... Opheim
120 High Hurdles .....	15.0.....	1961	Dan French ..... Plains
180 Low Hurdles .....	20.4.....	1961	Ed Hewitt ..... Troy
Shot Put .....	54' 3 3/4".....	1960	Ron Wirtz ..... Corvallis
Discus Throw .....	150' 9".....	1960	Walter Musgrove..... White Sulphur Springs
Javelin Throw .....	193' 4 1/2".....	1962	Jim Clairmont ..... Dixon
Pole Vault .....	13' 1/4".....	1962	Lynn Putnam ..... Opheim
Broad Jump .....	22' 3".....	1959	Scott Simpson ..... Superior
High Jump .....	6' 6".....	1959	Robert Hoppe ..... Townsend
880-yard Relay .....	1:34.8.....	1962	..... Dutton
			Dick Tresbesch
			Jim Clotfeiter
			Jack Becker
			Warren Schultz



## Thanks to Montanans

# Grizzlies Seek All-Sports Trophy ...

University of Montana is having one of its greatest years in sports. After seven events and only track, golf and tennis to be completed, Montana has finished in the upper half among six Big Sky Conference schools in every sport.

1965-66 Montana finishes:

Football .....	3rd
Cross Country .....	3rd
Basketball .....	3rd
Wrestling .....	3rd
Swimming .....	1st
Skiing .....	3rd
Baseball .....	1st, 2nd or 3rd

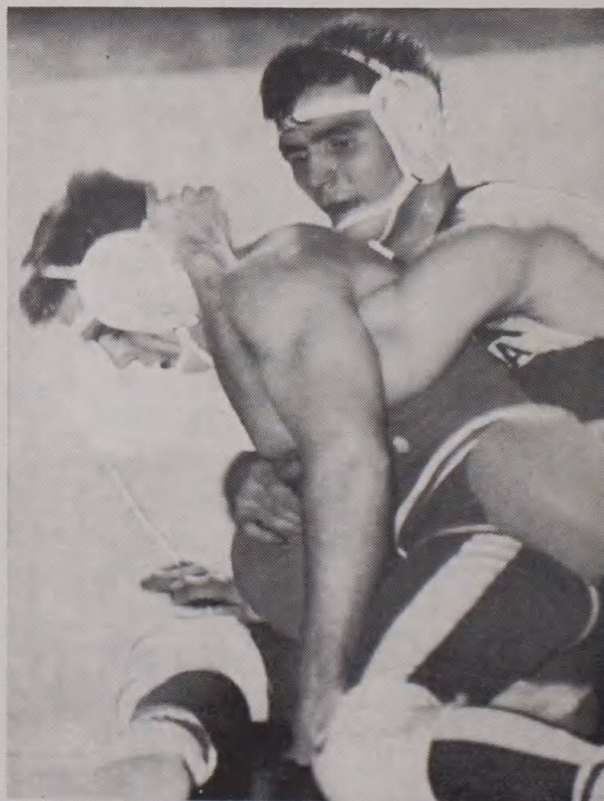
## FOOTBALL



**Dennis Skinner, Malta**  
Promising Sophomore

Twelve sophomores started for Montana in football last fall and the Grizzlies had their best record in four seasons. A knee injury kept hard-hitting Dennis Skinner out for the entire season but the sophomore tailback is slated for considerable action next year. As an Interscholastic competitor Skinner won the broad jump and javelin and placed in 100 and shot put.

## WRESTLING

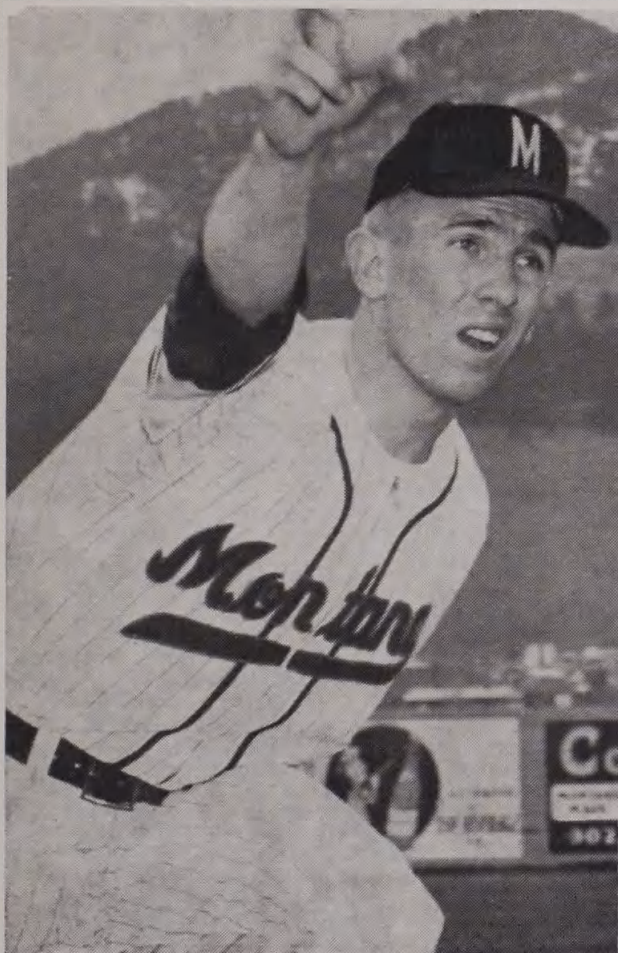


**Bob Palmer, Missoula**  
NCAA Champion

Wrestling at UM is only in its third year and the talent improves each season. Bob Palmer went undefeated at 137 pounds and took both Big Sky (for second time) and NCAA College Division titles.



## BASEBALL



**Larry Oddy, Miles City**  
Strikeout Artist

Former Interscholastic champ Larry Oddy is the veteran of the mound staff that has led the Grizzlies into contention for the Big Sky title. At press time UM was 13-4 for the season which included a string of 11 consecutive victories, longest since 1921. Oddy won the Class A high jump and broad jump in 1963.

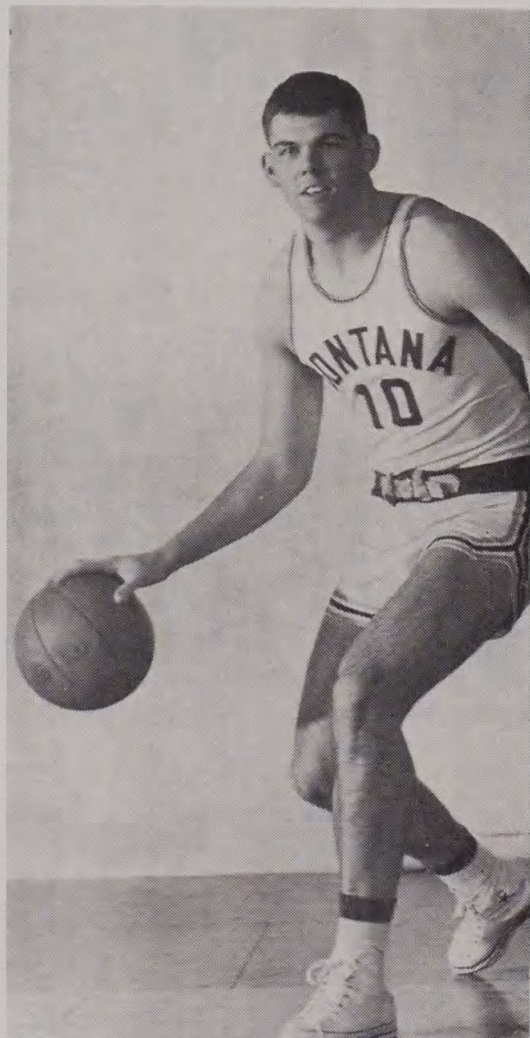
WE'LL BE HERE NEXT YEAR—

HOPE YOU'LL BE TOO!



AWARD WINNING NEWS

## BASKETBALL



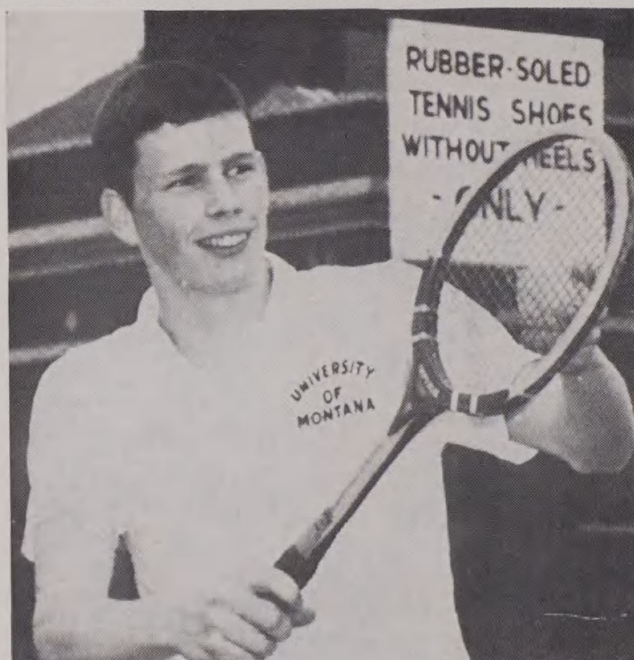
**Greg Hanson, Missoula**  
Sparked Winning Streak

Sophomore Greg Hanson was a key factor in Montana's basketball success last season. The 6-4 forward came into his own at midseason and sparked the Tips to eight straight wins and third place in the league. Hanson maintains an honor roll average and was the only sophomore named to the Big Sky all-academic squad.



# UM Tennis Squad Best in 15 Years...

## TENNIS



**John Alexander, Great Falls**  
Former Interscholastic Champ

Montana's tennis team is the best in 15 seasons and a big reason has been the playing of John Alexander, the 1962 high school doubles champion.

## TRACK & CROSS COUNTRY



**Fred Friesz and Bob Gibson**  
Proven Veterans

Fred Friesz of Billings West, shown winning the Class AA mile in 1964, and Missoula's Bob Gibson (second) are lettermen for UM in both cross country and track. Friesz has been third in Big Sky cross country twice and last spring was second to Doug Brown in both mile and three-mile runs. Gibson was second in the conference 880 last year.

## SKIING



**Gary Nelson, Missoula**  
Big Sky Champion

Skiing was vastly improved last year and Montana finished third. Gary Nelson was the 1964 slalom and combined title.

WELCOME TO MISSOULA

**SWEET REST  
MOTEL**

**TV - 45 Units - Phones**

1155 W. Broadway

Phone 549-2358



## Former Interscholastic Champs

# Grizzly Golfers—Best in Montana and Big Sky



**THE GRIZZLY GOLFERS** won the Big Sky title last season for the second year in a row. With all but two of that team returning, the Tips are favored for a third straight crown. All are Montanans and four were INTERSCHOLASTIC CHAMPIONS. Front row, l. to r.: Jim Roberts, Billings, state champ in 1960; Jim Wallinder, Missoula, 1959; Gary Koprivica, Butte, 1963, and Harland Peschel, Whitefish, 1961. Standing are John Warren, Butte; Don Waller, Cut Bank; Jack Marcure, Kalispell, and Coach Ed Chinske. All but Marcure and Wallinder are on the 1966 team. Two other Interscholastic winners, George Garrity of Whitefish, 1962, and Bill Rapp, Missoula, 1964, attend UM.

MONTANA'S OLDEST BANK



Front and Higgins

*Think...*  
**FIRST**  
NATIONAL BANK

**1<sup>st</sup>**  
OF  
*Missoula*  
HOME FOLKS  
SINCE 1873



# UM Tankers Swim Way to Big Sky Title . . .



COACH FRED STETSON'S SWIMMERS compiled a 9-0 dual meet record on the way to the first conference swimming title in school's history. Front row, l. to r.: Lee MacDonald, Si Stevens, Tim Powers, Ed Maguire, Fred Bischoff and Denny Hofflander. Standing are Stetson, Pete Gardiner, Don Keffler, Bruce Duffalo, Les Bramlette and manager Bill Bradley.

## ACKNOWLEDGMENT

The Interscholastic Committee wishes to thank the following organizations and individuals for their cooperation and assistance in helping with the 1966 Interscholastic.

Spurs and Bear Paws for their assistance in sales and promotion.

The Missoula Chamber of Commerce.

The Missoula merchants who contributed to advance ticket sales and program advertising.

The University of Montana ROTC.

The Daily Missoulian, the Missoula Times and the Montana Kaimin.

Radio stations KGVO, KGMV, KYSS and KYLT, and television station KGVO.

ASUM Traditions Board and UM fraternities, sororities, dormitories and other student groups.

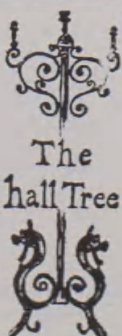
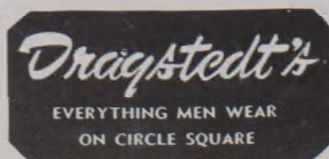
Sigma Delta Chi for the advanced publicity and meet coverage.

Larry Stuart and staff of the University Publications and News Service.

Wally Schwank and the UM Athletic Department.

The many Missoula citizens who contributed their time and talent as judges in the various events.

For 48 Years



## THE GOLDEN PHEASANT

Cafeteria — Restaurant  
Lounge

American and Chinese  
Dishes

318 North Higgins



Missoula's Newest

**THE**

**(E)(X)(E)(C)(U)(T)(I)(V)(E)**

**MOTOR INN**

**Heated Pool**

**Downtown Location**

201 E. Main, Missoula

Phone 543-7221

**COFFEE SHOP**

Take Home a Souvenir from  
University of Montana

**Mugs**

**Pennants**

**Sweat Shirts**

**Associated Students' Store**

Upstairs in the Lodge

## UNIVERSITY OF MONTANA

### 1966-67 FOOTBALL AND BASKETBALL SCHEDULES

#### FOOTBALL

Sept. 17	University of North Dakota.....	Billings
Sept. 24	University of South Dakota.....	Vermillion
Oct. 1	Portland State College .....	Missoula
Oct. 8	*Weber State College .....	Missoula
Oct. 15	University of the Pacific.....	Stockton
Oct. 22	*Idaho State University .....	Pocatello
Oct. 29	Northern Arizona University.....	Flagstaff
Nov. 5	*Montana State University .....	Missoula
Nov. 12	*University of Idaho .....	Moscow

Dec. 26-29 Rainbow Classic .....Honolulu  
(California, Notre Dame, Harvard,  
Portland, Hawaii, Montana, two  
service teams)

Jan. 2	University of San Diego.....	Missoula
Jan. 6	*University of Idaho .....	Missoula
Jan. 7	*Gonzaga University .....	Missoula
Jan. 13	*Weber State College .....	Missoula
Jan. 14	*Idaho State University .....	Missoula
Jan. 21	*Montana State University .....	Missoula
Jan. 27	University of Washington.....	Seattle
Jan. 28	Portland State College .....	Portland
Feb. 4	University of Washington .....	Missoula
Feb. 11	*Montana State University .....	Bozeman
Feb. 17	*Gonzaga University .....	Spokane
Feb. 18	*University of Idaho .....	Moscow
Feb. 20	Whitworth College .....	Missoula
Feb. 24	*Weber State College .....	Ogden
Feb. 25	*Idaho State University .....	Pocatello
Mar. 3	Portland State College .....	Missoula

\*Big Sky Conference games.

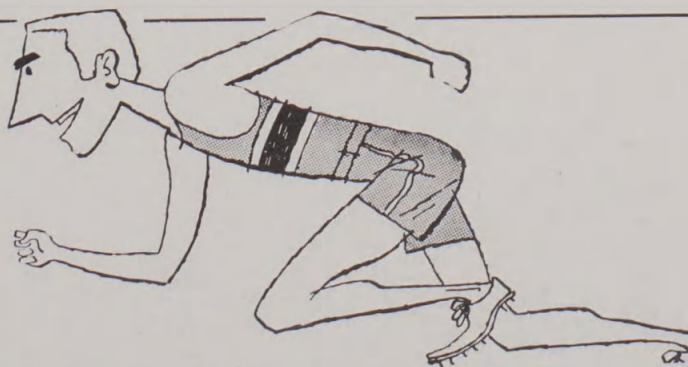
#### BASKETBALL

Dec. 3	Hiram Scott College .....	Missoula
Dec. 7	Illinois State University .....	Missoula
Dec. 8	Northern Michigan University.....	Missoula
Dec. 17	Washington State University.....	Pullman
Dec. 19	Seattle Pacific University.....	Seattle

**Go!**

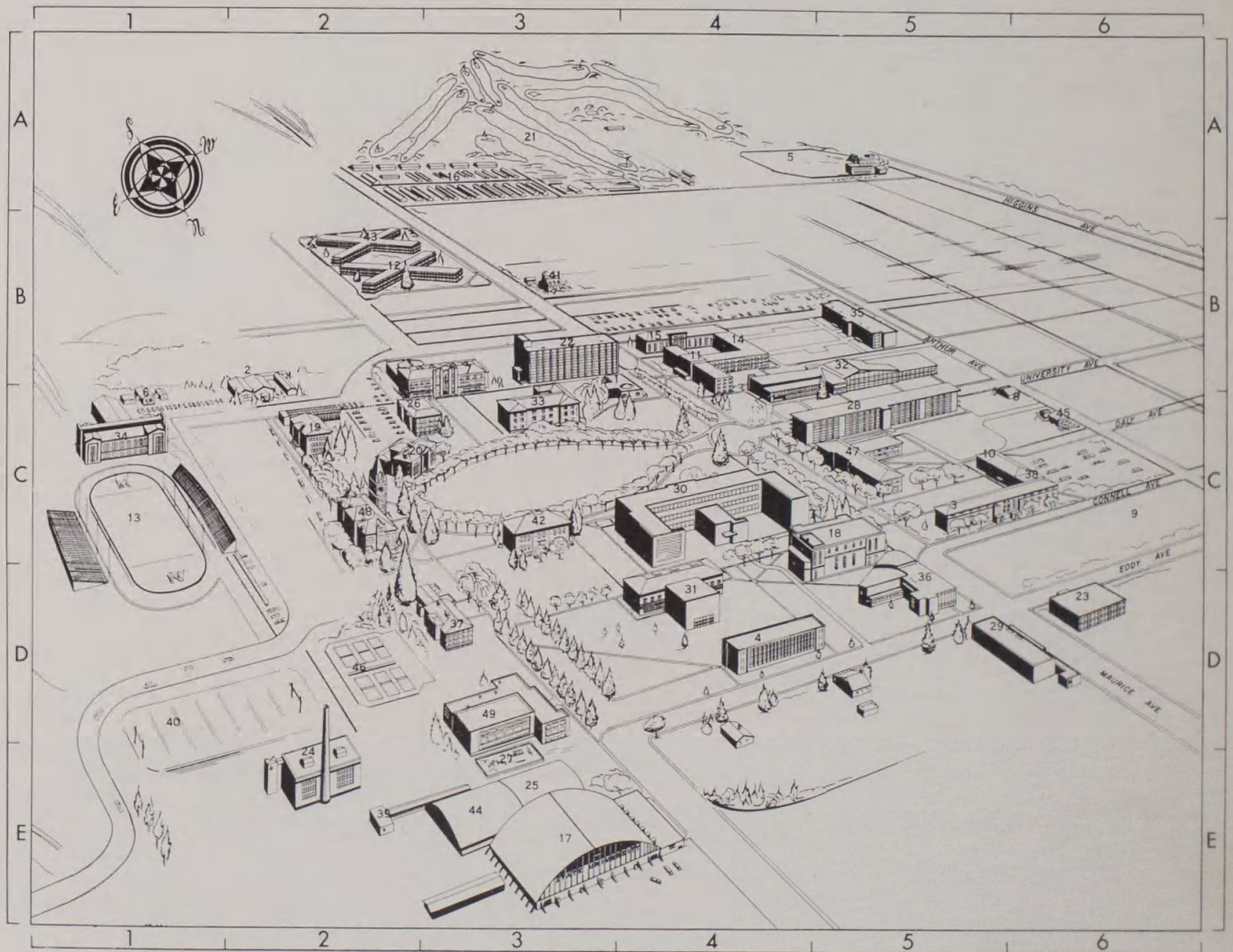
**WESTERN**  
**MONTANA**  
**NATIONAL BANK**

Member FDIC





# UNIVERSITY CAMPUS MAP



- |                               |                                |                          |
|-------------------------------|--------------------------------|--------------------------|
| 1. Alumni House—B3            | 17. Field House—E3             | 33. Math-Physics—C3      |
| 2. Army & Air Force ROTC—B2   | 18. Fine Arts—C5               | 34. Men's Gymnasium—C1   |
| 3. Brantly Hall—C5            | 19. Forestry—C2                | 35. Miller Hall—B5       |
| 4. Business Administration—D4 | 20. Geology—C2                 | 36. Music—D5             |
| 5. Campbell Field—A4          | 21. Golf Course—A3             | 37. Natural Science—D3   |
| 6. Carpenter Shop—C1          | 22. Health Sciences—B3         | 38. North Corbin—C6      |
| 7. Chemistry-Pharmacy—B3      | 23. Health Service—D6          | 39. Pottery—E2           |
| 8. Clerical Service—C6        | 24. Heating Plant—E2           | 40. Practice Field—D1    |
| 9. Cloverbowl—C6              | 25. Ice Rink—E3                | 41. President's House—B3 |
| 10. Corbin Hall—C5            | 26. Journalism—C2              | 42. Psychology—C3        |
| 11. Craig Hall—B4             | 27. Kindergarten Playground—E3 | 43. Sisson Apts.—B2      |
| 12. Craighead Apts.—B2        | 28. Knowles Hall—C5            | 44. Swimming Pool—E3     |
| 13. Dornblaser Field—C1       | 29. Law—D5                     | 45. Synadelphic House—C6 |
| 14. Duniway Hall—B4           | 30. Liberal Arts—C4            | 46. Tennis Courts—D2     |
| 15. Elrod Hall—B4             | 31. Library—D4                 | 47. Turner Hall—C5       |
| 16. Family Housing—A3         | 32. Lodge—B5                   | 48. University Hall—C2   |
|                               |                                | 49. Women's Center—D3    |