

University of Montana

## ScholarWorks at University of Montana

---

Montana Masquers Event Programs, 1913-1978

University of Montana Publications

---

1-25-1962

### Crime and Punishment, 1962

Montana State University (Missoula, Mont.). Montana Masquers (Theater group)

Follow this and additional works at: <https://scholarworks.umt.edu/montanamasquersprograms>

**Let us know how access to this document benefits you.**

---

#### Recommended Citation

Montana State University (Missoula, Mont.). Montana Masquers (Theater group), "Crime and Punishment, 1962" (1962). *Montana Masquers Event Programs, 1913-1978*. 128.

<https://scholarworks.umt.edu/montanamasquersprograms/128>

This Program is brought to you for free and open access by the University of Montana Publications at ScholarWorks at University of Montana. It has been accepted for inclusion in Montana Masquers Event Programs, 1913-1978 by an authorized administrator of ScholarWorks at University of Montana. For more information, please contact [scholarworks@mso.umt.edu](mailto:scholarworks@mso.umt.edu).

FIFTY-SEVENTH SEASON  
MONTANA STATE UNIVERSITY SCHOOL OF FINE ARTS  
DEPARTMENT OF DRAMA  
and

MONTANA MASQUERS

present

the premiere production

of

# CRIME AND PUNISHMENT

by RAYMON R. BRUCE

based on the novel by Dostoyevsky

Director, DOUGLAS BANKSON

Technical Director, RICHARD JAMES

Costume Designer, SARAH JAMES

MASQUER THEATER

JANUARY 25, 26, 27, and February 2 and 3, 1962

CAST (in order of appearance)

Raskolnikov .....	Jay Hopkins
Svidrigailov .....	Jerry Hopkins
Luzhin .....	Larry Boag
Marmeladov .....	George Gratzner
Alyona .....	Jane Nelson
Lizaveta .....	Melinda Wilson
Katerina .....	Jean Campbell
Polenka .....	Margo Maxon
First Workman .....	Jim Smith
Second Workman .....	Clarence Moles
Landlord .....	Gene Buck
Sonia .....	Helen McKeague
Priest .....	Russell Eliasson
Dimitri .....	Mike Fallon
Zamatov .....	Ned Taylor
First Painter .....	Russell Eliasson
Second Painter .....	Les Hankinson
Mrs. Raskolnikov .....	Sharon Cotrell
Dounia .....	Christine McDonald
Porfiry .....	Fred McGlynn

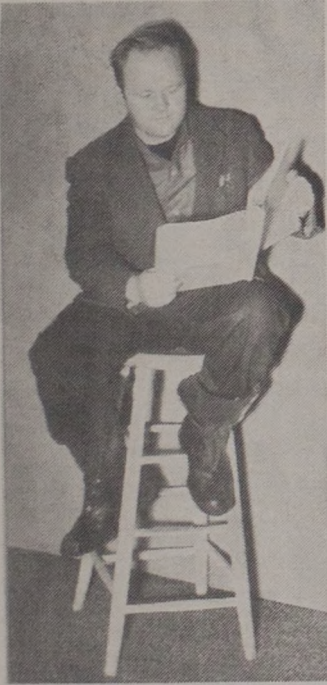
Scene: St. Petersburg, 1850

There will be a ten-minute intermission following Act I and Act II.

## PRODUCTION STAFF

Assistant to the Director .....	Raymon Bruce
Stage Manager .....	Mike Fallon
Lighting Designer .....	Jack Mueller
Costumes .....	Sarah James, head; Melinda Wilson, Helen McKeague
Sound .....	Kathy Rehm
Properties .....	Jane Nelson, Head; Melinda Wilson, Clarence Moles
Make-up .....	George Baldwin, Daphne Blixt, Roger DeBourg, Charlotte Ferree, Veronica Groomes, Deloris Turner
Scenery .....	Mike Harsell, Kent Garlinghouse, Don Heatherington
Box Office and Publicity .....	Roger DeBourg
Photographs .....	Cyrile Van Duser

## A LONG HISTORY



**Crime and Punishment** is the first full-length, original work offered in Montana theater since Douglas Bankson wrote **Shell-game** in 1960. **Crime and Punishment** marks the first time a full-length play by an MSU student has been staged since Carroll O'Connor's **A Seraph Intercedes** in 1956.

The first play ever offered by MSU was an original script. **Plutonia** or **Life in Hades**, a dramatization of John Kindrick Bang's **Pursuit of the Houseboat on the Styx** was offered June 3, 1898 at the Bennett Opera House in downtown Missoula. Since that date the University has encouraged work in playwriting through the English and Drama departments. When Alexander Dean was named the first director of theater at MSU in 1920 he instituted a program of playwriting and production. In 1926 **Polly From Paradise** (Montana) by the University Drama Director George W. Cronyn was a major feature of the season. Four one-acts by MSU students were offered the same year. Carl Glick, student (1908-1912) and later director of theater (1925-1927) wrote musical comedies as an underclassman. Lennox Robinson, former director of Dublin's Abbey Theater, produced his own play, **The Round Table** here during the summer of 1929. The Masquers offered awards in playwriting as early as 1933, instituting a nation-wide search for original scripts.

The University Theater was opened November 23, 1935, with a production of **More Died Than Men**, a pageant-drama by Paul Treichler (M.S. 1932). (This was the field that Bert Hanson was to expand and carry to the state's communities.)

In 1957 the Drama Department began a new program to encourage more playwriting by instituting a production schedule for original one-act plays and in 1959 Douglas Bankson joined the department to teach playwriting. One of his early students was Raymon Bruce.

Mr. Bruce, a graduate of Helena High School, toured Europe with the Army's First Division Band, and then entered MSU in 1956. In 1958 he studied German literature at Rupert-Karl University, Heidelberg, and returned to MSU in 1959. He acted in Masquer Summer theater in 1960, worked with Helena's Brewery Theater in 1961, and returned to MSU and appeared as the Judge in last fall's production of **The Visit**. Mr. Bruce's interest in playwriting and Dostoyevsky was first evidenced in 1961 when his **The Grand Inquisitor**, a one-act play based on a scene from **The Brothers Karamazov**, was presented by the Masquers. His growing interest in the theater next brought him to the formidable challenge of dramatizing **Crime and Punishment**. Although we believe the presentation of original plays must always be a primary aim of educational theater, rarely do we have an opportunity to create a complete, major, theater work—from first idea in a man's mind to final production on stage. With **Crime and Punishment**, writer, teacher, actor, director, designer, technician, and finally, tonight, you the audience have been given the chance to share in this creative experience.

Firman H. Brown, Jr.

Chairman, Department of Drama