

University of Montana

ScholarWorks at University of Montana

Numerical Terradynamic Simulation Group
Publications

Numerical Terradynamic Simulation Group

2013

The Freeze-Thaw Earth System Data Record (FT-ESDR)

John S. Kimball

University of Montana - Missoula

Follow this and additional works at: https://scholarworks.umt.edu/ntsg_pubs

Let us know how access to this document benefits you.

Recommended Citation

Kimball, John S., "The Freeze-Thaw Earth System Data Record (FT-ESDR)" (2013). *Numerical Terradynamic Simulation Group Publications*. 371.
https://scholarworks.umt.edu/ntsg_pubs/371

This Poster is brought to you for free and open access by the Numerical Terradynamic Simulation Group at ScholarWorks at University of Montana. It has been accepted for inclusion in Numerical Terradynamic Simulation Group Publications by an authorized administrator of ScholarWorks at University of Montana. For more information, please contact scholarworks@mso.umt.edu.

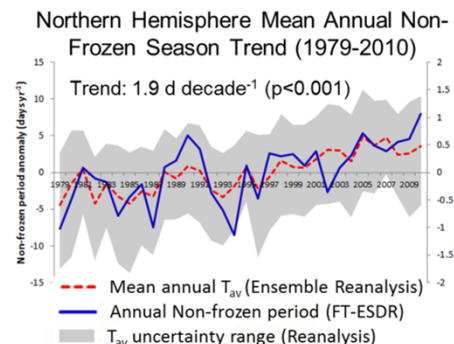


The Freeze-Thaw Earth System Data Record (FT-ESDR)

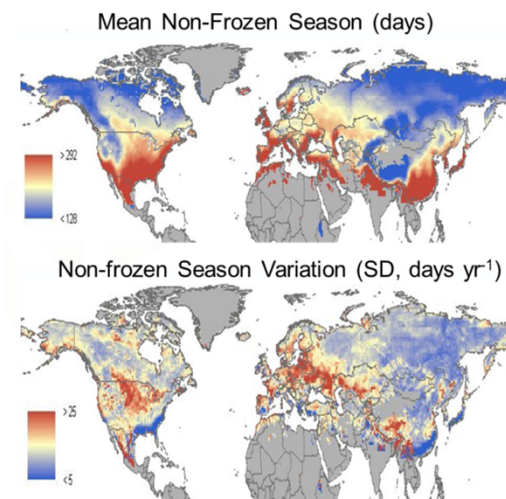
PI: John S. Kimball / The University of Montana

Objectives

- Construct consistent long-term global record of landscape freeze-thaw (FT) dynamics for areas where frozen temperatures are a major constraint to ecosystem processes;
- Distinguish FT heterogeneity in accordance with mesoscale climate, terrain & land cover variability;
- Establish FT links to productivity & net CO₂ exchange;
- Distinguish FT seasonal & annual variability from longer-term climate trends.



Source: Kim et al. 2012. *Rem. Sens. Environ.* 121.



Approach

- Calibration & integration of satellite microwave (37V GHz) brightness temperature (T_b) records from SMMR, SSM/I & AMSR-E;
- Temporal change classification of daily (AM & PM overpass) T_b series using seasonal frozen & non-frozen T_b reference states on a grid cell-wise basis;
- Four FT classification levels: **Frozen** (AM & PM); **Non-Frozen** (AM & PM); **Transitional** (AM frozen, PM non-frozen); **Inverse-Transitional** (AM non-frozen, PM frozen);
- Primary validation using in-situ temperatures from ~3700 global weather stations.

Co-Is: Y. Kim, J. Glassy (UMT), K. McDonald (JPL)

Key Milestones

- Oct-2010: Release of FT-ESDR, Vers. 1 (1987-2008).
- Dec-2012: Release of FT-ESDR, V.2 (1979-2010)
- Jul-2013: FT-ESDR served >4,800 unique users; directly contributed to >16 peer-reviewed journal publications; used or cited in >28 other peer-reviewed publications.

FT-ESDR access at NSIDC DAAC:

<http://nsidc.org/data/nsidc-0477.html>

FT-ESDR methods paper:

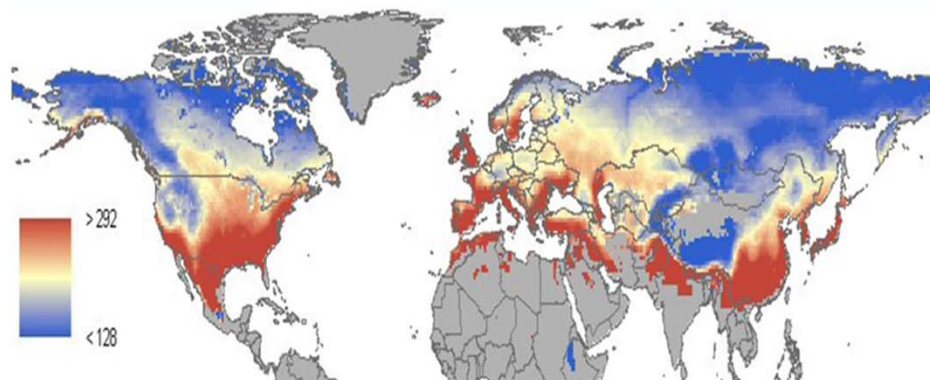
Kim et al. 2012. *Rem. Sens. Environ.* 121



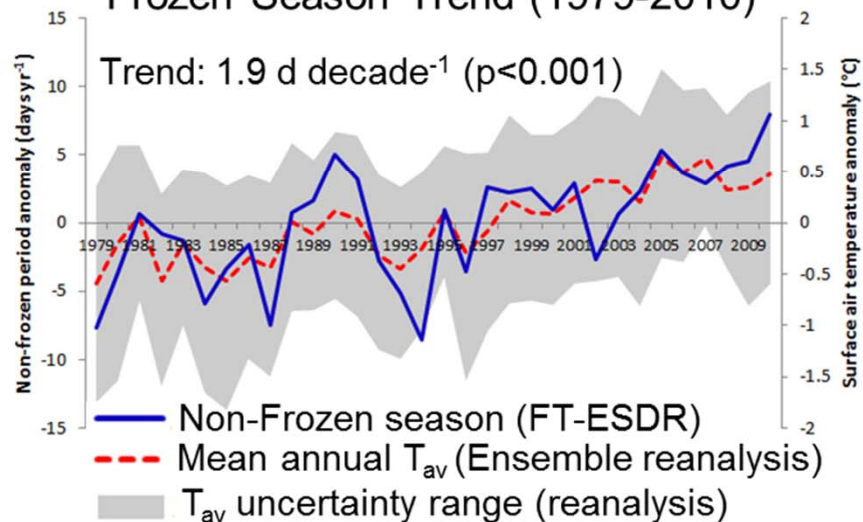
Satellite Detection of Recent Northern Hemisphere Non-Frozen Season Trends (1979-2010)

- 32-yr global daily freeze-thaw record (FT-ESDR) developed from overlapping satellite microwave (37V GHz) remote sensing (SMMR, SSM/I);
- Defines effective frozen temperature constraints to surface water mobility & vegetation growing seasons;
- Large spatial/temporal variability in non-frozen (NF) season timing & length (sum of classified NF days);
- Strong ($p < 0.001$) NH trend toward earlier, longer NF seasons ($1.9 \text{ d decade}^{-1}$) congruent with $\sim 0.3^\circ\text{C}$ decadal warming trend;

Mean Non-frozen Season (days)



Northern Hemisphere Mean Annual Non-Frozen Season Trend (1979-2010)



Non-frozen Season Variation (SD, days yr⁻¹)

