

University of Montana

## ScholarWorks at University of Montana

---

Biological Sciences Faculty Publications

Biological Sciences

---

9-2019

### Diverse conditions support near-zero growth in yeast: Implications for the study of cell lifespan

Jordan Gulli

*Georgia Institute of Technology*

Emily Cook

*Georgia Institute of Technology*

Eugene Kroll

*Georgia Institute of Technology*

Adam Rosebrock

*University of Toronto Faculty of Medicine*

Amy Caudy

*University of Toronto Faculty of Medicine*

*See next page for additional authors*

Follow this and additional works at: [https://scholarworks.umt.edu/biosci\\_pubs](https://scholarworks.umt.edu/biosci_pubs)



Part of the [Biology Commons](#)

## Let us know how access to this document benefits you.

---

### Recommended Citation

Jordan Gulli, Emily Cook, Eugene Kroll, Adam Rosebrock, Amy Caudy and Frank Rosenzweig. (2019). Diverse conditions support near-zero growth in yeast: Implications for the study of cell lifespan. *Microbial Cell*6(9): 397-413. doi:10.15698/mic2019.09.690

This Article is brought to you for free and open access by the Biological Sciences at ScholarWorks at University of Montana. It has been accepted for inclusion in Biological Sciences Faculty Publications by an authorized administrator of ScholarWorks at University of Montana. For more information, please contact [scholarworks@mso.umt.edu](mailto:scholarworks@mso.umt.edu).

---

**Authors**

Jordan Gulli, Emily Cook, Eugene Kroll, Adam Rosebrock, Amy Caudy, and Frank Rosenzweig

# Diverse conditions support near-zero growth in yeast: Implications for the study of cell lifespan

Jordan Gulli<sup>1</sup>, Emily Cook<sup>1</sup>, Eugene Kroll<sup>1</sup>, Adam Rosebrock<sup>2,3</sup>, Amy Caudy<sup>2</sup> and Frank Rosenzweig<sup>1,\*</sup>

<sup>1</sup> School of Biological Sciences, Georgia Institute of Technology, Atlanta, GA 30332.

<sup>2</sup> Donnelly Centre for Cellular and Biological Research and Department of Molecular Genetics, University of Toronto, Toronto, Ontario, Canada.

<sup>3</sup> Present address: Stony Brook School of Medicine, Stony Brook University, Stony Brook, NY 11794.

\* Corresponding Author:

Frank Rosenzweig, School of Biological Sciences, 310 Ferst Drive. Atlanta, GA 30332-0230. Ph: 404.385.4458; FAX: 404.894.0519; E-mail: frank.rosenzweig@biology.gatech.edu

**ABSTRACT** Baker's yeast has a finite lifespan and ages in two ways: a mother cell can only divide so many times (its replicative lifespan), and a non-dividing cell can only live so long (its chronological lifespan). Wild and laboratory yeast strains exhibit natural variation for each type of lifespan, and the genetic basis for this variation has been generalized to other eukaryotes, including metazoans. To date, yeast chronological lifespan has chiefly been studied in relation to the rate and mode of functional decline among non-dividing cells in nutrient-depleted batch culture. However, this culture method does not accurately capture two major classes of long-lived metazoan cells: cells that are terminally differentiated and metabolically active for periods that approximate animal lifespan (e.g. cardiac myocytes), and cells that are pluripotent and metabolically quiescent (e.g. stem cells). Here, we consider alternative ways of cultivating *Saccharomyces cerevisiae* so that these different metabolic states can be explored in non-dividing cells: (i) yeast cultured as giant colonies on semi-solid agar, (ii) yeast cultured in retentostats and provided sufficient nutrients to meet minimal energy requirements, and (iii) yeast encapsulated in a semisolid matrix and fed *ad libitum* in bioreactors. We review the physiology of yeast cultured under each of these conditions, and explore their potential to provide unique insights into determinants of chronological lifespan in the cells of higher eukaryotes.

doi: 10.15698/mic2019.09.690

Received originally: 06.05.2019;

in revised form: 08.07.2019,

Accepted 09.07.2019,

Published 20.08.2019.

**Keywords:** baker's yeast, chronological lifespan (CLS), near-zero growth, starvation, giant yeast colonies, retentostats, encapsulation, immobilized cell reactors.

#### Abbreviations:

CFU – colony forming unit,  
CLS – chronological lifespan,  
CR – caloric restriction,  
ICR – immobilized cell reactor,  
PCD – programmed cell death,  
Q – quiescent,  
QS – quorum sensing,  
RLS – replicative lifespan,  
TCA – tricarboxylic acid,  
TOR – target of rapamycin.

## INTRODUCTION

Aging, or the progressive loss of function over time, is a hallmark feature of all living cells, including 'simple' organisms such as baker's yeast [1]. More than half a century ago, Mortimer and Johnson [2] reported that individual yeast cells are mortal and have a limited capacity for cell division. Subsequent demographic analyses showed that mortality increased exponentially as yeast populations underwent successive rounds of replication in batch culture. Replicatively aging yeast undergo characteristic morphological and biochemical changes that include increasing cell size, accumulation of bud scars, slowing of the cell cycle, and accumulation of extrachromosomal rDNA circles [3-5]. Genetic variation is associated with strain-specific differences in the rate of func-

tional decline, manifest as strikingly different mean replicative lifespans (RLS) among wild and laboratory yeasts [6, 7]. Yeast also age chronologically, as evidenced by the decline and eventual death of a non-dividing cell over its chronological lifespan (CLS). Because microbes cannot divide in the absence of essential nutrients, yeast CLS has most frequently been studied in relation to the survival of free-floating (planktonic) cells in nutrient-depleted liquid culture [8-10]. Such cells enter G<sub>0</sub> arrest and initially undergo metabolic and structural changes that include accumulation of storage carbohydrate, cell wall thickening, an overall decline in protein synthesis, an increase in stress tolerance, and a shift to respiratory metabolism [8, 11]. Viability among starving planktonic yeast cells diminishes over time, as does their replica-

tive capacity, suggesting that RLS and CLS may be linked mechanistically [11]. Caloric restriction (CR) during the time non-dividing yeast age delays the progressive reduction in RLS [12-14]. Indeed, among chronologically old cells, those that have the lowest mitochondrial membrane potential (reducing ATP production) [15] also have the longest subsequent RLS; thus, mitochondrial function may constitute a causal link between CLS and RLS [16]. Further evidence for this link is provided by rho(0) cells, which experience both lower mitochondrial membrane potential and longer RLS than do rho(+) cells [17]. Strain-specific variation in CLS exists among wild yeast isolates, assayed as survivorship of starving planktonic cells [18], and the genetics underlying this variation has been generalized to other eukaryotes, including animals [19].

### CHRONOLOGICAL AGING IN STARVED PLANKTONIC CULTURES

Screens for CLS mutants in starved yeast cultures have uncovered genes involved in stress-resistance and nutrient-signaling pathways [20-23]. Some of these pathways, like the target-of-rapamycin (TOR)-pathway, are highly conserved among eukaryotes and have been implicated in aging processes in worms, flies and mammals [24-27]. However, starvation poorly mimics the physiology of major classes of metazoan cells. Terminally differentiated cells such as cardiac myocytes and neurons consume a large proportion of the organism's energy and are typically well nourished [28]. Although growth-arrested, such cells remain metabolically active and perform large amounts of work with minimal functional decline, often for decades in higher animals [29]. Starvation also poorly mimics the physiology of mitotically quiescent cells, such as hematopoietic stem cells and myosatellite cells that, respectively, can quickly be recruited to form blood cells or to regenerate injured skeletal muscle. Satellite cells are "lying low but ready for action," being not only mitotically but also metabolically quiescent, having few mitochondria, and deriving most of their maintenance energy requirements from anaerobic (i.e. fermentative) metabolism [30]. Hematopoietic stem cells also appear to derive most of their maintenance energy requirements from fermentative metabolism, and indeed, the switch to mitochondrial respiration appears to be necessary for stem cell differentiation [31, 32].

The starving yeast aging paradigm, where lifespan is measured in nutrient-depleted planktonic cells, therefore falls short as a model to study the physiology of cells that are either growth-arrested but metabolically active, or growth-arrested but metabolically quiescent, i.e. those cells that are on the front lines and those that are held in reserve. To make up for this shortfall, alternative yeast culture conditions are needed in which mitotically-arrested cells can be studied under circumstances that range from caloric excess to CR. Here, we consider alternatives to the starving yeast paradigm (**Figure 1A**) where near-zero growth rates can be achieved by other means. These include aging yeast cultured on solid medium (**Figure 1B**), in retentostats (**Figure 1C**), or as encapsulated cells in contin-

uously-fed bioreactors (**Figure 1D**). With these culture methods at their disposal, yeast researchers can investigate determinants of chronological lifespan in a variety of contexts: closed systems (**Figure 1A, B**), and open systems (**Figure 1C, D**), matrix-free (**Figure 1A, C**), and matrix-associated (**Figure 1B, D**), nutrient-limited (**Figure 1A, B, C**), and nutrient-replete (**Figure 1D**). Below we consider how these different contexts lead to physiological states that better approximate metabolism in non-dividing animal cells than do starving planktonic yeast.

## CHRONOLOGICAL AGING IN YEAST COLONIES

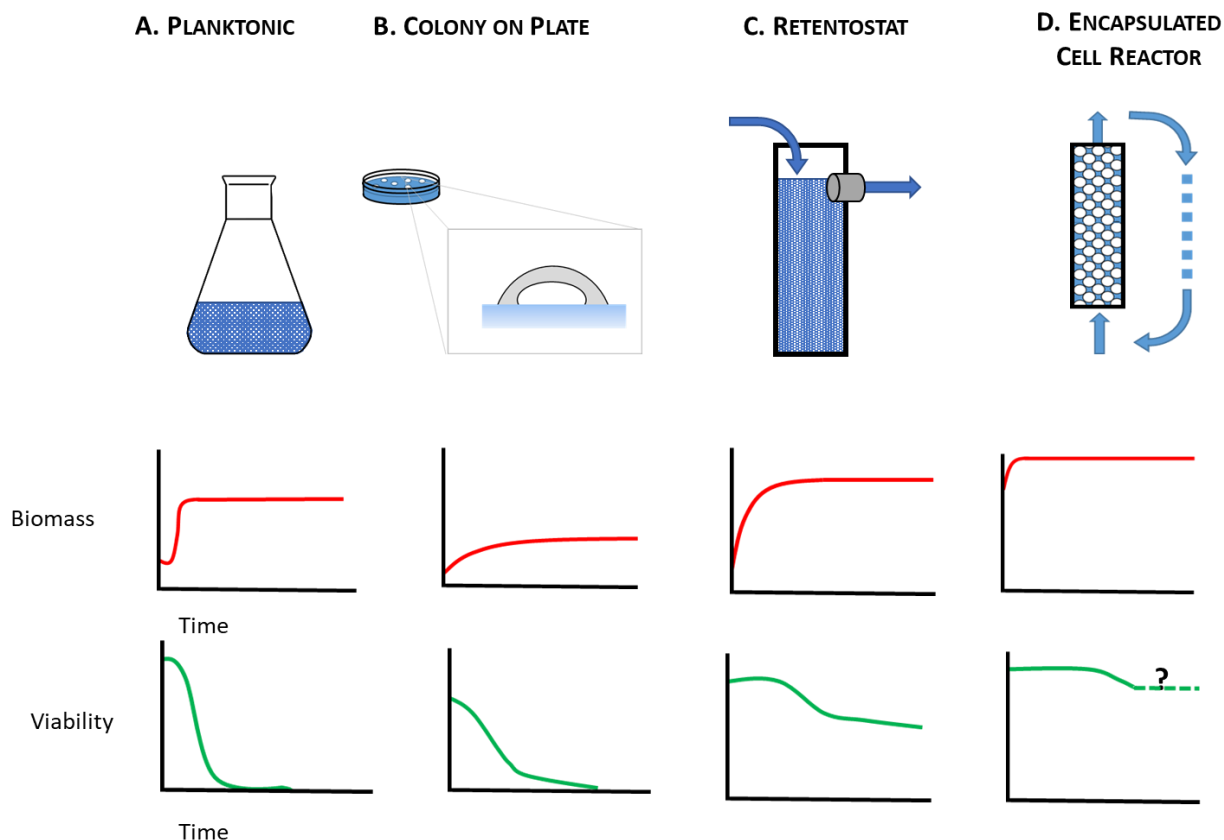
### General considerations

Yeast CLS has been studied in the context of colonies growing on the surface of nutrient agar [33, 34], typically under aerobic conditions on complex media [35, 36] for periods ranging from 20-130+ days. Unlike cells cultured in ideally-mixed liquid media, giant colonies (created by spotting a cell suspension onto GMA [37]) are in a spatially-structured environment, where they experience gradients of nutrients, waste products, signaling molecules, and gases [38]. These gradients, in turn, influence how cells stratify in colonies and age within those strata, much like a morphogenetic field in early embryological development [39]. By ten days post-inoculation, colonies have differentiated vertically into two cell types, only one of which divides [40]. In this respect, the colony resembles a multicellular organism, in that it is largely clonal and consists of a mixed population of dividing and non-dividing cells.

### Cells in a colony display slower growth, and higher viability than aging planktonic cells

The various gradients experienced by cells in colonies [41] create selective pressures not experienced by planktonic cells in liquid culture. Cells on agar and cells in liquid culture behave similarly just after inoculation [36]. But soon thereafter colonies undergo a longer period of slow growth than do planktonic cells (>8 days on solid medium vs. 40 hours in liquid) [42]. Diffusion provides cells growing on solid agar with a slow, steady nutrient supply [40], making it possible for the population to gradually expand for up to 32 days [35]. However, not every cell in a colony can divide: the number of colony-forming units (CFUs) recovered after dilution and plating on fresh agar asymptotes after 18 days. And by 90 days as much as 25% of a colony consists of cells that are alive but unable to reproduce on rich medium, a likely result of chronic nutrient deprivation, much like oligotrophic environments in nature host large numbers of viable but nonculturable cells [43].

Patterns of reproduction and survivorship in giant colonies contrast sharply with those patterns in planktonic culture, where biomass accumulation typically ceases 3 days post-inoculation [44]. After 10 days in synthetic dextrose complete (SDC; 2% dextrose) medium, only 5% of starving planktonic yeast may be viable [45]. By contrast, after 10 days on GM agar (1% yeast extract, 3% glycerol, 1.5% agar), yeast in giant colonies are 90% viable and do not fall to 5% until after 135 days. In both instances, viability was estimat-



**FIGURE 1: Chronological lifespan of non-dividing yeast has been studied using multiple culture methods. (A)** planktonic cultures, **(B)** colonies on plates, **(C)** retentostats, and **(D)** encapsulated cell reactors, each of which presents a different time-dependent profile of biomass accumulation and cell viability.

ed as the proportion of total direct counts recovered as CFUs [35]. At all time-points measured, yeast in colonies exhibit greater viability than their isogenic counterparts in planktonic culture, even among strains that differ in CLS [35, 46, 47]. This observation has led Palkova and colleagues to speculate that prolonged slow growth of yeast cells in colonies is analogous in some ways to CR [35], a factor shown to increase lifespan in all species examined to date [12, 14, 48, 49].

#### Yeast in aging colonies become physiologically-differentiated

In an aging colony, subpopulations of cells differentiate in both vertical (**Figure 2A**; upper vs. lower) and horizontal (**Figure 2B**; center vs. margin) dimensions, with subpopulations aging in different ways and at different rates [50, 51]. Following 10 days of incubation, spatially-segregated cell types can be distinguished from one another and from their progenitors with respect to morphology, nutrient utilization, and stress resistance. Cellular differentiation within giant colonies has been linked to production of volatile ammonia, which is believed to contribute to, or even drive, formation of stratified layers within a colony. The process has been described in detail [52-55], and recently reviewed by Vachova and Palkova [50, 51].

#### Vertical stratification of U and L cells in aging yeast colonies

Along the vertical axis, cells in giant aging colonies stratify into upper (U) cells and lower (L) cells. U cells typically exhibit multiple small vacuoles and swollen mitochondria having few cristae [38]. Further characteristics of U cells include glycogen accumulation, lipid droplet formation, and low mitochondrial transmembrane potential, as indicated by staining with DiOC<sub>6</sub>, a mitochondrial dye. In contrast with U cells, L cells contain numerous mitochondria with well-developed cristae, and exhibit a high transmembrane potential by DiOC<sub>6</sub> staining, [36, 56]. Accordingly, L cells produce 3-fold more reactive oxygen species than U cells, and exhibit higher respiratory capacity [56].

Paradoxically, L cells display attributes reminiscent of both starved and exponentially-growing planktonic cells. Like starved planktonic cells, L cells are actively respiring: glucose-repressible genes are de-repressed, including those in mitochondrial biogenesis, oxidative phosphorylation, and nonfermentable carbon source utilization (e.g. *HAP5*, *USV1*, *RTG1*) [56, 57]. However, like exponential-phase planktonic cells, L cells are sensitive to heat shock, cell wall dissolution by zymolyase, and exhibit no TOR activity [56]. Further, recent studies on finely-dissected giant colonies indicate that among L-cells, upper and lower L

subpopulations can be discriminated on the basis of their distinctive patterns of gene expression [57].

Physiological differences between U and L cells lead to differences in stress resistance and CLS within an aging colony. For example, at day 50 only 10% of L cells are still viable, compared to 50% of U cells [50]. Higher viability among U cells is correlated with activation of regulatory pathways like TOR, typical of cells growing under nutrient-rich conditions [58]. But U cells also exhibit features typical of yeast under nutrient limitation, such as activation of the general amino acid control pathway [50]. This unusual physiology suggests active consumption of some nutrients, but limitation by others, and contrasts with the physiology of L cells, which upregulate genes involved in nonfermentable carbon source utilization rather than TOR.

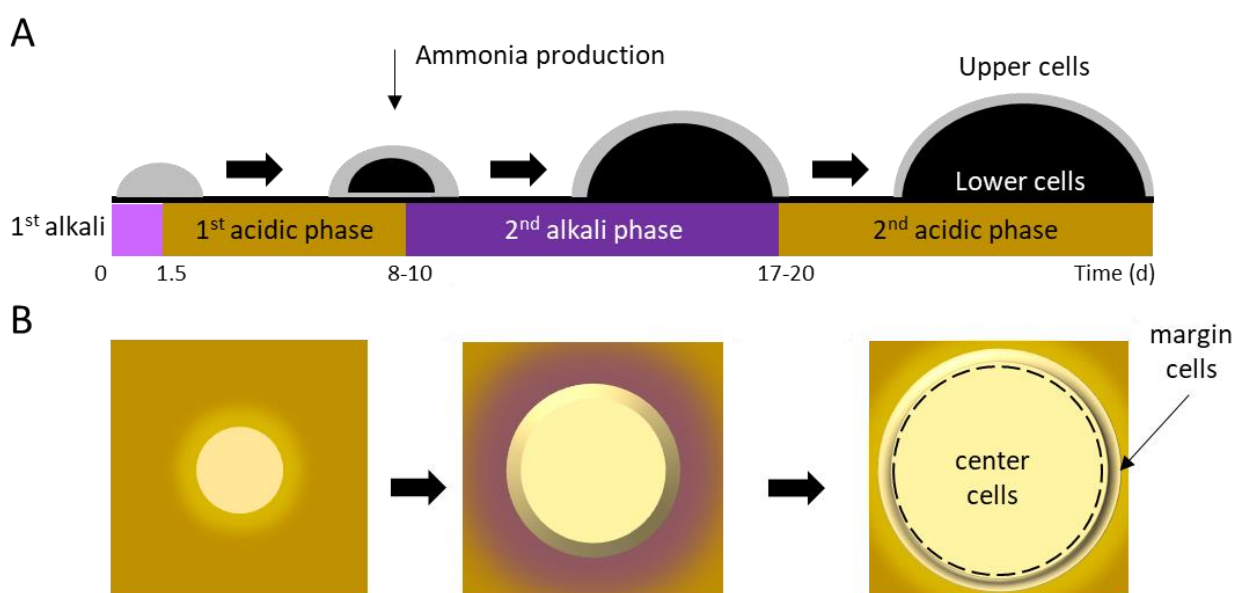
#### Cell stratification benefits some cell types at the expense of others, contributing to colony longevity

Autophagy is important for survival in U, but not L, cells. Colonies derived from strains having defects in autophagy (*atg1Δ*, *atg12Δ*, *atg5Δ*, *atg8Δ*) exhibit reduced U cell viability, particularly in older colonies, but have no effect on L cell viability. This observation raises the possibility that L cells may provide an energy source for U cells. Indeed, L cells activate degradative pathways related to proteasomal and vacuolar function, and upregulate expression of genes involved in glucose export [50]. Defects in these genes diminish U cell viability, providing evidence that U cells depend on L cell degradation and L cell glucose export for their survival. Ninhydrin staining indicates that L cells also release amino acids, with their total intracellular amino acid content decreasing by 23% between days 15 and 20. Finally, L cells are zymolyase-sensitive and upregulate cell

wall glucanases (Scw11p, Dse4p, Egt2p), suggesting they may release cell wall constituents that serve as carbon sources for U cells. The consumption of L cells by U cells may benefit the colony as a whole, assuring not only its survival, but also its dispersal. All things being equal, cells on a colony's exterior are more likely to be dispersed either by water or by insects than cells in its interior. However, exterior cells are distant from diffusible nutrients in the colony substratum. L cells may thus engage in a form of altruism that benefits their kin, as U and L cells are essentially clones of one another [59].

Horizontally-stratified cells may also engage in autophagy. Cells in the colony center begin to differentiate from those on the colony margins around the same time that U and L cells differentiate (Figure 2). Superoxide concentrations increase in center cells, even as they simultaneously decrease in margin cells [54, 60]. As a result, center cells undergo accelerated programmed cell death (PCD) relative to margin cells. In contrast with either accidental or regulated cell lysis, PCD results in the release of lytic enzymes that damage or destroy healthy neighboring cells [50, 51]. Thus, similar to U cells receiving nourishment from L cells, center cells' PCD may contribute to overall colony survival by providing nutrients that nourish margin cells. This idea is supported by the observation that removing center cells from a differentiated colony leads to diminished growth at the colony margin [46]. While cells in a giant yeast colony undergo apoptosis similar to cells undergoing PCD in a multicellular organism, the process does not recruit Mca1p or Aif1p, and must therefore be regulated differently than in metazoans [36].

#### Giant colonies as a model to study aging and cancer



**FIGURE 2:** Yeast colonies transition through alkali (pH ~6.8) and acidic (pH ~5.2) phases, causing the area around a colony to change in color from yellow to purple and back again on agar containing Bromocresol purple. The pH changes contribute to cellular differentiation in both the vertical (A) and horizontal (B) dimensions. Gray indicates healthy, dividing cells and black indicates non-dividing cells.



Yeast in a colony ages differently than starving, planktonic yeast. As planktonic cells age, they increasingly express stress-defense genes (*SOD1*, *SOD2*, *CTT1*) [61, 62]. But as colonies age, expression of stress-related genes, including those encoding oxidative stress defense enzymes, decreases, at least among certain cell types [52, 56]. Also, while *SOD1* is known to be essential for yeast longevity in liquid cultures [63, 64], it does not appear to be essential for colony survival and longevity [60, 61]. Cells in colonies are exposed to gradients of nutrients, waste products and gases whose complex spatial and temporal dynamics result in a mosaic of physiologically differentiated cell types that open up the possibility for myriad cell-cell interactions. Consequently, yeast growing as colonies on agar more closely resemble the tissues of multicellular organisms than do planktonic yeast in liquid culture [61]. Yeast growing as colonies might also be used to model mammalian cancer cells as both maintain high glycolytic flux; by contrast, starving planktonic cells may be a more suitable model for tumor necrosis [56, 65].

U and L cells can be easily isolated [36] and their physiological differences exploited to model different types of metazoan cells. Whereas L cells could be used to model healthy mammalian tissue [56], U cells exhibit certain attributes of tumors, notably progressive changes in mitochondrial morphology such as swelling and loss of cristae [66], ammonia induced autophagy [67], lowered respiratory capacity [68], and the activation of amino acid biosynthesis and TOR [56, 69]. Further, nutrient and waste product flow between U and L cells are reminiscent of how the Cori and the glutamine-ammonium cycles interplay between healthy and tumor cells [51, 56]. Still, like starving planktonic yeast in liquid media, a yeast colony growing on agar is a closed system having limited material exchange with the external environment, save for gases or volatiles such as alcohols. In this respect, both techniques imperfectly model metazoan cells, which are open systems.

## CHRONOLOGICAL AGING IN CONTINUOUS CULTURE: THE RETENTOSTAT

### General considerations

In yeast, cell reproduction is usually coupled with metabolism [70]. Regardless of whether cultured as planktonic cells in liquid media, or as colonies on agar, yeast eventually ceases to divide because it lacks essential nutrients. By contrast, many animal cell types undergo  $G_0$  arrest in the presence of excess nutrients [71], and then begin to age chronologically. Another way to better model mammalian CLS with yeast is to culture it in a retentostat (**Figure 1C**), a continuous-flow system whose operational principles were first described by Herbert [72]. This apparatus is a variant of the more familiar chemostat [73-77] where balanced growth of planktonic cells is achieved by continuous flow of a growth limiting-nutrient through a bioreactor. At steady state, microbial specific growth rate,  $\mu$ , is equal to the dilution rate,  $D$ , defined as the outflow flow rate of spent medium ( $F_{out}$  in L/h) over the liquid volume of culture (VL) in the bioreactor. Depending on species, strain and type of limiting nutrient, chemostats are typically run at  $0.4 \text{ h}^{-1} > D > 0.03 \text{ h}^{-1}$ . Similar

to chemostat, in a retentostat all nutrients save one, an energy source, are present in non-limiting concentrations. However, unlike a chemostat, cells in a retentostat are prevented from leaving the reactor in the spent medium stream. Thus, cells can be cultured to high cell densities (**Figure 1C**;  $\sim 15 \text{ g biomass per L}$ ) [78] at near-zero growth rates ( $D < 0.001 \text{ h}^{-1}$ ). Continuous retentostat cultures maintain homeostasis between cells' rate of substrate consumption and their maintenance energy requirements. Like a chemostat, and indeed like a metazoan with a circulatory system, the retentostat is an open system, continuously exchanging nutrients and wastes with its external environment.

### Retentostat growth and viability

Boender et al. 2009 were among the first to study *S. cerevisiae* in retentostats. Under anaerobic conditions, in a chemostat running at  $D = 0.025 \text{ h}^{-1}$ , cells satisfy their maintenance energy requirements, estimated to be  $0.50 \text{ mmol of glucose per gram of biomass per hour}$ . Starting at  $D = 0.025 \text{ h}^{-1}$ , cell outflow can be blocked by filtration, transforming the chemostat into a retentostat. After 7 days, growth rate in the retentostat decreased to  $< 0.004 \text{ h}^{-1}$ , and after 22 days growth rate fell to  $< 0.001 \text{ h}^{-1}$ , corresponding to a doubling time of 27 days. Over 22 days of retentostat cultivation, cell viability fell from  $91 \pm 8\%$  to  $79 \pm 6\%$ . Glycogen content more than doubled over this interval, from  $4.3 \pm 0.8\%$  in chemostat cultures at  $D = 0.025 \text{ h}^{-1}$  to  $9.1 \pm 0.6\%$  in retentostat cultures at 22 d ( $D < 0.001 \text{ h}^{-1}$ ); trehalose content did not change ( $1.0 \pm 0.4\%$ ). Retentostats therefore open up possibilities for studying cell physiology under conditions of severe CR and very low growth rate.

### Transcriptomics

Boender and colleagues have carried out genome-wide expression studies of retentostat yeast, comparing its profile to those of faster-growing chemostat yeast ( $D = 0.025 \text{ h}^{-1}$ ) [79]. Beginning with a culture growth rate of  $0.025 \text{ h}^{-1}$  at day 0, growth rate in the retentostat decreased after 2 days to  $0.0084 \text{ h}^{-1}$ , then leveled off at  $0.00063 \text{ h}^{-1}$  after 22 days [79]. At 22 days 15% of cells were budded, typical for non-growing *S. cerevisiae* [80], and viability was estimated to be  $\sim 80\%$  [79]. Relative to chemostat-grown cells ( $D = 0.025 \text{ h}^{-1}$ ), transcript levels in retentostat-grown cells ( $D = 0.00063 \text{ h}^{-1}$ ) were increased for 615 genes, and decreased for 241 genes ( $q$ -value  $< 0.000188$  by  $K$ -means clustering). Transcript levels of many house-keeping genes (e.g. *ACT1*, *PDA1*, *ALG9*, *TAF10*, *TF11*, *UBC6*) did not differ between these two cultivation regimes [79], indicating sustained metabolic activity. Among genes whose transcript levels did increase relative to chemostat-grown cells, those related to mitochondrial function were strikingly over-represented, notably 32 of 76 genes encoding mitochondrial ribosomal proteins, as well as genes that encode respiratory chain sub-units (e.g. *ATP4*, *ATP7*, *ATP15*, *COX5B*, *COX8*, *COX9*, *COX11*, *COQ5*, *COQ9*, *SOC1*, *SCO2*), protein processing (*IMP1*, *IMP2*, *SOM1*), and mitochondrial membrane transport (*TIM17*, *TOM6*) [79]. Upregulation of mitochondrial functions may therefore represent specific cellular adaptations to near-zero growth unrelated to either oxygen tension or glucose concentration [79]. Of

genes whose transcript levels decreased, those in lipid and sterol metabolism were over-represented, though this could be an artifact of amending anaerobic cultures with ergosterol and the oleate ester Tween-80.

Transcript levels were elevated for multiple genes involved in repairing damaged DNA or protein (*SIR2*, *RAD10*, *RAD24*, *RAD27*). Upregulation of *SIR2* and its homologs may enhance genome stability in retentostat-grown cells relative to cells in chemostats, as *SIR2* deletion is known to increase genome instability [81]. Diminished expression of *SIR2* homologs reduces longevity in planktonically-grown yeast [82, 83] and may impact human aging as well [84], making the behavior of these genes of particular interest.

### Proteomics

Calorically restricted retentostat yeast is metabolically active, and its gene expression program suggests it may be protected against DNA and/or protein damage, even after 22 days [85]. Given these observations, it is not surprising that the yeast proteome also changes upon induction of near-zero growth under CR [86]. Of 3,813 proteins detected in a study comparing retentostat cells to faster-growing cells ( $D = 0.025 \text{ h}^{-1}$ ), the levels of 252 proteins significantly increased while an equal number decreased, altogether 13% of the detectable proteome. By comparison, 31% of the proteome is expressed differently between exponential and stationary phase batch cultures [87]. Among proteins whose expression increased relative to faster growing cells were those in the oxidative branch of the tricarboxylic acid (TCA) and glyoxylate cycles as well as 5 of 6 proteins in the succinate dehydrogenase complex (Sdh1p, Sdh2p, Sdh3p, Sdh1bp, and Shh3p) [88]; these proteins are typically not expressed under anaerobic conditions [89]. Among proteins whose expression decreased in retentostats were 4/17 proteins involved in ergosterol biosynthesis, and 8/14 proteins forming the Like-Sm ribonucleoprotein core [86], which is thought to activate mRNA decapping [90].

Interestingly, the transcriptome and proteome datasets correlated poorly, with only 146 of 504 proteins changing with the same sign and magnitude as their associated transcripts [86]. Of the 146 proteins whose changes were consistent with changes in their transcript levels, two-thirds were higher in retentostats, notably 28 of 110 of mitochondrial proteins and 11 of 53 proteins in oxidative phosphorylation. Poor correlation between transcript and protein levels has been previously observed in stationary phase cultures in *S. cerevisiae* and in *Schizosaccharomyces pombe* [91, 92]. This finding may stem from half-life differences between proteins ( $0.5 \text{ h} < t_{1/2} < 20 \text{ h}$ ) [93] and mRNAs ( $3 \text{ min} < t_{1/2} < 8 \text{ h}$ ) [94]. These differences may be exaggerated in cells under nutrient limitation as more energy is required to synthesize proteins (1957 mmol ATP/100 g formed biomass) than mRNAs (201 mmol ATP/100 g formed biomass) [95]. Transcriptomic and as well as proteomic datasets do indicate tight regulation over proteins and transcripts related to  $\text{O}_2$  consumption, suggesting that this is of special importance to calorically restricted cells.

### Starvation vs. caloric restriction

A key distinction between cells in retentostats and cells in nutrient-depleted planktonic cultures is that the former are not starving. Unrelieved, starvation inexorably leads to cellular deterioration [96-99]. By contrast, retentostat cells are calorically restricted, a condition operationally defined as cells being fed one third to one half that of cells fed *ad libitum*, without inducing malnutrition or starvation [13, 48, 86, 100]. In a retentostat cells are supplied with enough carbon and energy for cell maintenance and survival, but not enough for reproduction. But while they exhibit some features of starving cells, like increased heat shock resistance and expression of certain quiescence-related genes [79], calorically-restricted retentostat yeast are more metabolically active and have higher viability [14].

Starvation and CR are physiologically different states; this can be illustrated by inducing starvation in a retentostat via elimination of the sole carbon source. Calorically restricted retentostat yeast turn over ATP at a rate of 1 mmol per gram of biomass per hour [14]. By contrast, within 24 hours of starvation induction, ATP turnover rate falls to less than 2% of this value (0.013 mmol per gram of biomass per hour). Twenty-one days after starvation induction, ATP turnover rate drops even further, to 0.0002 mmol per gram of biomass per hour.

Compared to cells in chemostats ( $D \cong 0.025 \text{ h}^{-1}$ ), retentostat yeast shows decreased expression of genes required for protein synthesis [79, 86]. Still, there is evidence for protein synthesis [85] despite its energetic cost [101]. Active protein synthesis and recycling among such cells explains their high levels of metabolic activity (>70%) and viability (60%), even in 22-day old cultures [85, 86]. Although they are severely nutrient-limited, retentostat yeast is sensitive to further dietary restriction: starvation results in the immediate downregulation of a large fraction of the protein synthetic machinery (25%) [14, 85]. Twenty-six hours after starvation induction retentostat cells exhibit high levels of apoptosis (43%) and greatly diminished viability (15%).

To compare the transcriptome of starving cells to that of CR cells whose maintenance energy requirements are being met, Boender *et al.* cultured yeast in retentostats with and without glucose. 549 genes were differentially expressed [14]. Levels of 140 transcripts were upregulated in carbon starved cells, including genes encoding dehydrogenases (e.g. *MDH3*, *DLD1*, *BDH1*, *BDH2*, *SDH1*) involved in the glyoxylate, Cori, and TCA cycles, among others, as well as genes whose products are required for growth on non-fermentable carbon sources (e.g. *HBT1*, *FMP45*, *SPG4*, *SPG1*). Transcript levels for the remainder were downregulated in starved cells, including 109 genes in protein synthesis, as well as 30 genes involved in amino acid biosynthesis. Starvation and CR are thus distinct physiological states that can be expected to have very different impacts on cell lifespan.

### Yeast retentostats as a model for the study of chronological aging



Calorically restricted cells in retentostats can be used to gain fresh insight into factors governing lifespan in non-dividing metazoan cells. Unlike starving planktonic cells, retentostat cells do not differentiate into quiescent and non-quiescent cell types [102]; instead, cells remain in an extended G<sub>1</sub> phase [103]. With its active metabolism and near-zero growth rate, retentostat yeast is well-suited to model non-proliferating metazoan cells that are poised in G<sub>1</sub> and supplied with their maintenance energy requirements [104], including reserve (as opposed to active) epithelial stem cells [105] and cervical reserve cells [106]. Retentostat yeast could also be used to study disease, e.g., retentostat-cultured *rim15Δ* yeast exhibits phenotypes reminiscent of cancer cells, notably heat shock sensitivity [107] and unresponsiveness to anti-growth signals [108]. Still, retentostat cells are nutrient-limited, whereas many somatic metazoan cells are not. And even retentostat enthusiasts attest to the challenges of its set-up and operation [78, 109-111].

### CHRONOLOGICAL AGING IN CONTINUOUSLY-FED IMMOBILIZED CELL REACTORS

#### General considerations

Microbial, plant and metazoan cells can be immobilized in a variety of matrices, ranging from naturally-derived hydrogels such as agarose, alginate, chitosan, collagen, fibrin, gelatin, and hyaluronic acid [112] to synthetic hydrated polymers and inorganic substrates, such as silica gels, sintered glass, and ceramic beads [113]. In naturally-derived hydrogels, microbial encapsulation (a type of immobilization) typically results in spherical beads whose diameter can be fixed in the range of micro- to millimeters. These beads, and the cells they contain (**Figure 3**), can then be placed into immobilized cell reactors (ICRs; **Figure 1D**) and operated either as closed, batch-culture systems or as open, continuously-fed systems. The latter, which include stirred tank, packed and fixed-bed reactors [114], allows for continuous exchange of nutrients and waste between cells in their extracellular matrix and the liquid medium flowing through the reactor.

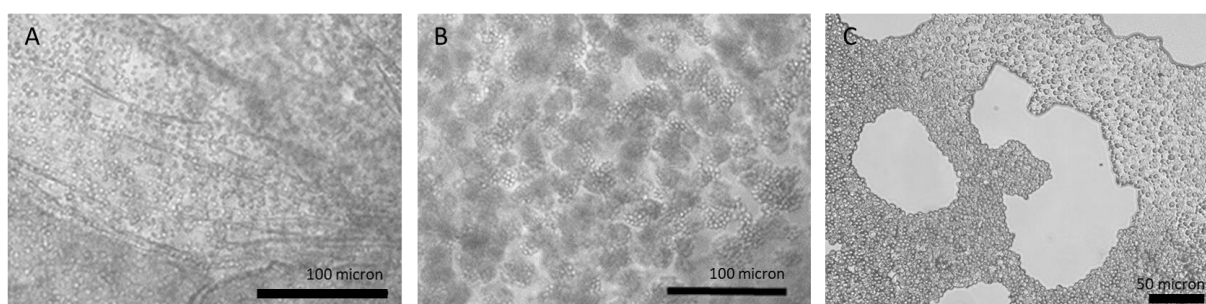
#### Industrial applications

ICRs have chiefly been studied with an eye towards their use

in biotechnology. There, they offer three advantages over conventional planktonic batch culture: (i) high productivity in terms of yield per cell, (ii) increased stability during the production cycle, and (iii) prolonged dry storage times. These advantages, reported by many [115-120], arise from the fact that gel-encapsulated cells reproduce slowly, if at all, and therefore divert little substrate to new biomass, which allows for more efficient substrate utilization [121]. Longer production cycles can be attributed to encapsulated cells' greater resistance to acids [122, 123], organic solvents [124, 125], ethanol [126], osmotic stress, and thermal stress [127, 128]. Greater stress resistance may also be associated with altered composition and organization of both the cell wall and plasma membrane [129], as well as with mechanical protection against shear provided by the encapsulating matrix [130]. In yeast, increased dry storage time without substantial loss in viability is consistent with the immobilized cells' higher content of storage and structural polysaccharides [116, 131, 132].

#### Potential for cell-cell interactions among encapsulated yeast

Yeast cells immobilized in alginate 'beads' cease to divide after reaching a certain density, which accounts for their high fermentative capacity, and likely also their exceptional longevity and resistance to stress. It is tempting to speculate that the physical proximity of such cells in a semi-solid matrix (**Figure 3**), coupled with their entry into a G<sub>0</sub>-like state, confers upon them certain features of tissue level-organization, including social interactions. Strains isolated from the wild exhibit a variety of behaviors that have the potential to facilitate cell-cell interactions; these include floc [133] and flor formation [134], adhesion [135-137], as well as a kind of primitive multicellularity [138-141]. Yeast can also form biofilms [135], which in effect causes cells to become immobilized in a matrix of their own manufacture. Many of these behaviors are correlated with increased resistance to ethanol stress [142, 143], enhanced thermotolerance and osmotolerance [144], and improved survivorship in the presence of inhibitory compounds [145]. Similarly, encapsulated yeast become stress tolerant, though particular resistance profiles are specific to the type of encapsulating matrix [127, 146].



**FIGURE 3: Yeast microcolonies form in alginate-encapsulated beads packed in immobilized cell reactors.** Immediately after gelation (A), the interior of bead consists of primarily single, unbudded cells evenly dispersed throughout alginate matrix, but by 3 days in ICR (B), cells have evenly dispersed in clonal clusters of 4 or more cells. After 14 days in ICR (C), cells are tightly packed, occupying majority of matrix material. Hollow chambers are dispersed throughout beads, presumably formed by CO<sub>2</sub> generation.

Social behavior in immobilized yeast appears to rely on intercellular signaling or quorum sensing (QS), which can be mediated by peptide pheromones [147] or by various organic compounds (alcohols, aldehydes and volatiles) [148]. An important criterion for a QS mediator is that it needs to reach a certain concentration before eliciting a concerted response which goes beyond that needed to metabolize or detoxify the compound [149]. One example of collective behavior in yeast is the onset of glycolytic oscillations relying on autocatalytic regulation of phosphofructokinase [150]. Glycolytic oscillations with a period of 25-32 s become synchronized in yeast cells depending on their concentration in alginate [151] and chitosan [152] beads, and are probably induced by locally high concentrations of acetaldehyde. We hypothesize that encapsulated yeast engage in social interactions and signal to each other in ways reminiscent of metazoan somatic cells [153]. Whether the G<sub>0</sub>-like state observed in such yeast is induced by QS, by mechanical forces like “self-jamming” [154], or is maintained by combination of chemical and mechanical factors remains to be explored.

### Physiology and transcriptomics

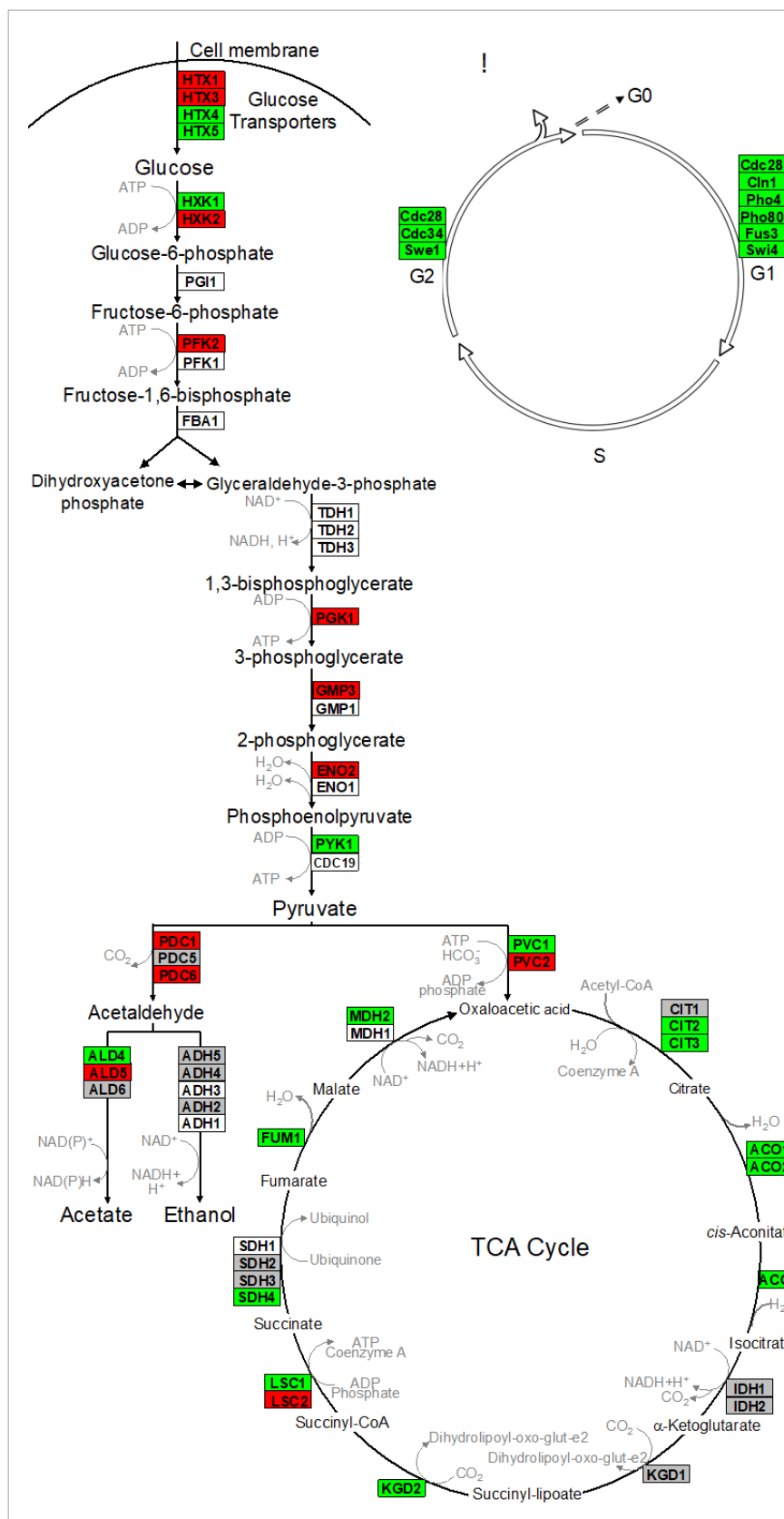
Nagarajan *et al.* 2014 validated that reproduction is uncoupled from metabolism in continuously-fed, alginate encapsulated yeast, described one of its genetic determinants, and provided evidence that such cells are exceptionally long-lived [132]. The authors also showed that continuously-fed immobilized yeast exhibit a stable pattern of gene expression that is distinct from both growing and starving planktonic cells, consisting of an increased expression of genes in cell wall remodeling, glycolysis, and stress resistance, and an decreased expression of genes in the TCA cycle and cell cycle regulation (**Figure 4** and discussion below) [132]. These highly metabolically active cells achieved near-zero growth rates within 72 h post-encapsulation, and maintained this state for nearly 3 weeks, during which time upwards of 80% of cells remained virgin daughters [132]. Together, these attributes open up the possibility for developing a model to study cellular senescence and CLS in non-dividing eukaryotic cells, both in the absence and in the presence of CR.

Kruckeberg *et al.* developed methods to perform, for the first time, global analysis of gene expression in immobilized microbial cells [155]. Affymetrix GeneChips were used to profile the transcriptome of encapsulated yeast cells, compared to that of planktonic yeast grown either in glucose-limited chemostats or in glucose batch culture (mid-log and early stationary phase). Data from immobilized cultures revealed a pattern of gene expression that differed from planktonic cells, and remained stable over >2 weeks of continuous culture. Fewer than 100 genes changed by more than two-fold and none changed in sign. Transcript abundance conspicuously increased for multiple glycolytic genes (e.g., *HXK2*, *PFK2* and *PGK1*) and decreased for genes in the TCA cycle (e.g., *CIT2,3* and *ACO1,2*) and in the cell cycle (e.g., *CLN1* and *CDC28*) [156]. These data provide yet another line of evidence that ICR yeast is metabolically active, but growth-arrested.

Additional features of this dataset included increased transcription of genes that act in cell wall remodeling. *RPI1* up-regulation in encapsulated cells is especially noteworthy. Rpi1 acts as an antagonist to the RAS–cAMP pathway, and prepares yeast for entry into stationary phase by inducing transcription of genes whose products fortify the cell wall [157]. Like non-reproductive quiescent cells and spores, and like cells in the retentostat, immobilized yeast is highly heat-shock and zymolyase-resistant. However, unlike such cells, immobilized yeast fed *ad libitum* sustains a high rate of metabolism. In experiments described by Nagarajan *et al.* (2014), medium was continuously circulated within the bioreactor, exchanging the void volume once per minute. Every 48 h the feed reservoir was replaced with fresh SDC medium containing a five-fold excess of all micronutrients amended with 10% glucose as sole carbon source. Over 9 such cycles glucose was continuously fermented at near-theoretical yield with an undiminished rate of conversion.

Transcript levels of stress response regulators *MSN4* and *RIM15* were significantly increased in immobilized, but not in planktonic, cells. *RIM15* plays a role in cell cycle arrest, as multiple nutrient-sensing pathways converge on Rim15p [158]. *RIM15* has also been reported to promote chronological longevity in both starving planktonic yeast [100, 159] and yeast in retentostats [160]. Based on these converging lines of evidence, Nagarajan *et al.* hypothesized that this master regulator played a central role in uncoupling metabolism from reproduction in immobilized yeast. Flow cytometry of DNA content revealed that unlike wild type cells, *rim15Δ* cells exhibit a pronounced G<sub>2</sub> peak at later time points in ICR culture, indicating that they continue to divide. After 5 days of continuous culture viability of immobilized *rim15Δ* yeast fell to 25%, compared to >90% in immobilized wild type cells. *RIM15* thus helps to mediate cell cycle arrest and stress resistance in the ICR model, and may contribute to ICR cells’ extraordinary chronological longevity. The discovery that this remarkable physiological state is under genetic control opens the door to screening large numbers of barcoded knock-outs, a procedure likely to reveal new classes of longevity genes that alter lifespan in the absence of severe CR.

Of particular interest, but as yet not studied, is *XBP1*, which encodes a global regulator of entry into quiescent (Q) phase [161]. In this context, Xbp1 represses hundreds of genes following exhaustion of glucose, including G<sub>1</sub> cyclins such as *CLN3* [162]. The Rad9/Rad53 checkpoint may act in the same pathway, protecting cells from replicative stress in cultures lacking glucose [163]. Similar to Q cells, recent data show that encapsulated cells are exceptionally resistant to starvation. Indeed, survivorship of starved encapsulated cells is several -fold higher than starved planktonic cells (Cook and Kroll, unpublished data). The XBP1/G<sub>1</sub> cyclin pathway, in conjunction with starvation/stress signal transduction and replicative checkpoints, needs to be studied in encapsulated cells that cease to divide, similar to Q cells, but do so in the presence of nutrients, unlike Q cells.



**FIGURE 4:** Alginate-encapsulated yeast cultured in continuously-fed bioreactors exhibit a stable pattern of gene expression in (A) intermediary metabolism, and (B) cell cycle where transcript abundance of glycolytic genes is increased, and that of TCA cycle and cell cycle genes is decreased. Red indicates genes where expression was at least two-fold greater in encapsulated cells than in planktonic cells over the course of 2 weeks culture. Green indicates instances where those values were at least two-fold less. Gray indicates no significant difference in sign or magnitude between planktonic and encapsulated cells (image adopted from Nagarajan et al. 2014 [132]).

This may further connect well-fed encapsulated yeast cells to somatic cells in metazoans that also adjust their cell cycle machinery to uncouple reproduction from metabolism [164].

### Proteomics and metabolomics

Consistent with conclusions drawn from transcriptomics, a proteomic study of alginate-chitosan-encapsulated yeast in comparison with isogenic planktonic cells uncovered widespread changes in gene expression [146]. Encapsulated and planktonic cells were grown for 25 h in synthetic medium amended with 5% glucose, and the relative levels of 842 proteins were analyzed by mass spectrometry and 2D gel electrophoresis. A significant increase in central metabolic proteins was observed among immobilized cells, especially glutamine metabolism and fermentation, including proteins normally under glucose inhibition, such as high-affinity hexose transporters (Hxt6, Hxt7) and hexose kinases (Hxk, Glk1). This study also noted marked decreases in the level of proteins involved in protein synthesis and RNA transport. Interestingly, some stress response proteins were upregulated (Ssb2, Hsp12, Hsp26, Hsp78 and Hsp104), while others were downregulated (Ras2, Sod1, and many others) [146].

Metabolite levels also differ between encapsulated and planktonic culture conditions. When encapsulated cells are fed *ad libitum*, as in Nagarajan *et al.* [132], levels of succinate, citramalate, and citrate increase by several-fold relative to planktonic cells as determined by liquid chromatography mass-spectrometry (Figure 5). By contrast, while levels of fumarate and malate are similar across all conditions, alpha-ketoglutarate levels decrease many-fold in encapsulated cells. Some of these metabolomic changes could not easily have been predicted from the transcriptomic data. For example, expression data reveal no significant differences between planktonic and encapsulated cells in the transcript levels of *IDH1/2* or *KGD1*, yet their respective substrate and product, alpha-ketoglutarate, is at very low levels in ICR. It is possible that such discrepancies can be explained, for example, by diminished expression of key enzymes upstream of a metabolite pool. In the case of alpha-ketoglutarate, expression of both citrate synthase (*CIT2/CIT3*) and aconitase (*ACO1/ACO2*) isoenzymes is significantly decreased in encapsulated cells relative to planktonic. Going forward, comparison of transcriptomic and metabolomic data obtained under identical conditions is sure to provide insight into biochemical changes that ensue following encapsulation, and further elucidate mechanism(s) by which encapsulated cells uncouple metabolism from cell division.

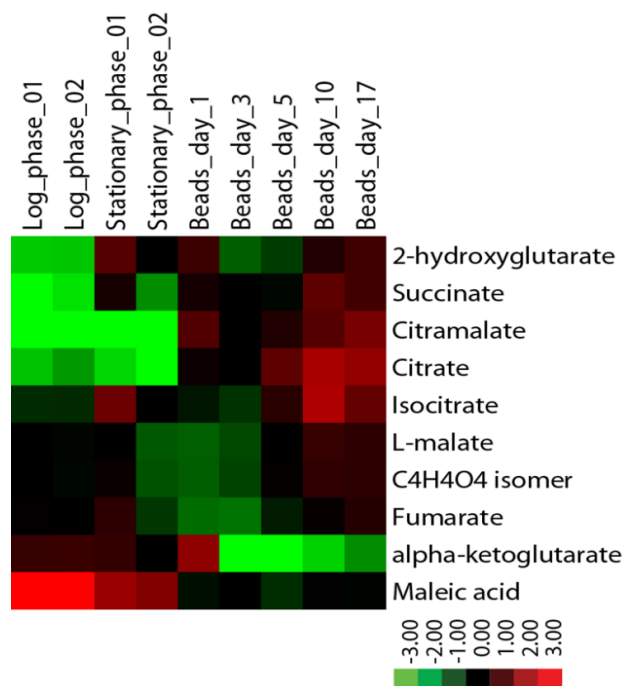
### ICRs for the identification of anti-aging compounds

Yeast microcolonies originating from a single cell are often used in high-throughput drug screens. As the measurement of colony size can be automated, this approach allows for large numbers of anti-aging compounds to be rapidly screened [165]. An obvious disadvantage of this approach is that it relies on cell division; hence, microcolony assays may fail to identify compounds that also extend CLS

[104]. Because ICRs are populated with non-dividing, nutrient-replete cells, they offer the drug discovery process the advantage of directly assaying CLS. Though ICR-based assays are unlikely to be as easily multiplexed as those based on microcolony growth, or growth in liquid media, they could provide a valuable tool for testing whether anti-aging compounds uncovered by high-throughput assays also extend CLS.

### Encapsulated, continuously-fed yeast as a model for studying chronological lifespan

In metazoans, the great majority of cells exist in a non-dividing state,  $G_0$  [166-168]. While most are terminally-differentiated and will never divide, the lifespan of some  $G_0$  cells approximates the lifespan of the whole organism [169, 170], during which time they operate at full metabolic capacity [171]. Encapsulated yeast confined in ICR and fed *ad libitum* provides a reasonable approximation to post-mitotic metazoan cells like cardiac myocytes and neurons that are amply nourished but do not divide. Indeed, of all the zero-growth yeast models reviewed here, only the ICR model provides a way to study CLS in a simple eukaryote in the *absence* of CR, or starvation. This model could also be adapted for the study of CLS in the *presence* of CR simply by limiting carbon to levels that are one-third to one-half that of cells fed *ad libitum*, without inducing malnutrition



**FIGURE 5: Levels of citric acid cycle metabolites in continuously-fed encapsulated yeast differ from planktonic yeast in exponential and stationary phases.** Metabolites were extracted from flash-frozen cell pellets grown in batch or in continuous culture as indicated [172] and analyzed by LC-MS using a reversed phase method. Metabolite levels were normalized to the quantity of input cells, and displayed as a log<sub>2</sub> fold change centered around the median value for each metabolite.

or starvation [13, 48, 86, 100]. Systematic improvements that would enhance the utility of this model include: (1) multiplexing mini-ICRs so that individual columns could be sacrificially sampled over the course of weeks to months of continuous culture, (2) introducing mechanisms to sparge mini-ICRs so that CLS can be modeled under oxic and anoxic conditions, and (3) devising techniques to ensure even dispersal of diverse genotypes in a given bead, so that representatives of the barcoded yeast knock-out and overexpression collections could be studied under conditions of long-term growth arrest, either in the presence or absence of CR.

### CONCLUSIONS AND FUTURE DIRECTIONS

Genetic screens using the starving yeast model have provided insight into the behavior of eukaryotic cells under prolonged stress, showing how pathways such as TOR and genes like *SIR* are integrated and together contribute to cell survival. Because starving yeast are not dividing, this model has been used to measure CLS. As such cells are, by definition, nutrient-deprived, experimental results have been interpreted in the light of how CLS is affected by CR, a factor shown to extend longevity in virtually every species where it has been studied. But having few calories (CR) is not the same as having no calories (starvation). Thus, starving yeast does not mimic the physiology and lifespan of major classes of metazoan cells. Cardiac myocytes and neurons are terminally differentiated in a state of  $G_0$  arrest, but remain metabolically active and well-fed for the life of the organism. Muscle stem cells are also in  $G_0$ -arrest and remain metabolically quiescent until recruited to enter  $G_1$  and produce cells that differentiate into, for example, myoblasts.

Alternative culture methods exist that enable yeast researchers to circumvent this fundamental problem. Yeast in giant colonies receive low levels of nutrients by diffusion, allowing them to divide over longer periods (~18 d vs. ~30 h) than starving planktonic cells. This longer period of slow growth contributes to the higher viability of aging cells in colonies relative to aging planktonic cells. Unlike starving planktonic cells, whose populations are not spatially structured, cells grown in colonies exhibit a primitive type of context-dependent cellular differentiation as they age, with some cell classes alive, but growing at near-zero rates. Ultimately though, yeast grown in giant colonies, like starving planktonic yeast, live in a closed, nutrient-depleted culture system that scarcely resembles a metazoan body.

Retentostats, an open system that exchanges nutrients and waste products with the environment, overcome several limitations associated with studying CLS in starving planktonic cells. Retentostat yeast is cultured at near-zero growth rates and provided with maintenance energy requirements. Retentostat yeast is under CR, a physiological

state distinct from starvation. Cell viability remains high (80% after 22 days) with little evidence of protein and DNA damage. Aging retentostat yeast may therefore serve as a surrogate for classes of metazoan cells that have exited the replicative cycle such as pluripotent stem cells.

A third alternative to starving planktonic yeast is encapsulated yeast, which can be cultured in ICRs at near-zero growth rates. This matrix-associated, open culture system offers flexibility in nutrient supply. Yeast can be fed *ad libitum* so that non-dividing cells remain viable for weeks on end, conditions that mimic metabolism and longevity in terminally-differentiated metazoan cells. ICR yeast could also be cultured under nutrient-limiting conditions, making it possible to study cells in a tissue-like matrix under CR. Nutrient levels could even be reduced to where only maintenance energy requirements are met, creating an ICR model for the study of stem cells.

Caution should be exercised in the use of starving, planktonic microbial cells to evaluate determinants of CLS in metazoan stem cells and metazoan cells that are terminally differentiated. Since these cell types have their energy requirements met, alternative systems are needed that better mimic their physiologies. Yeast growing in colonies, in retentostats, and in immobilized cell reactors all provide a higher degree of biological realism.

### ACKNOWLEDGMENTS

JG was funded by NSF Graduate Research Predoctoral Fellowship DGE-1148903, NSF iCorps 1743464 and the Georgia Research Alliance (GRA.VI18.B16). EC was funded by NIAID grant 1R01-AI136992-01A1. EK and FR were funded by NASA grants NNX14AK38G-EXO and NNA17BB05A. AAC was funded by an Open Operating Grant from the Canadian Institutes for Health Research, a Discovery Grant from the Natural Sciences and Engineering Research Council of Canada and as the Canada Research Chair of Metabolomics for Enzyme Discovery.

### CONFLICT OF INTEREST

The authors declare no conflict of interest.

### COPYRIGHT

© 2019 Gulli *et al.* This is an open-access article released under the terms of the Creative Commons Attribution (CC BY) license, which allows the unrestricted use, distribution, and reproduction in any medium, provided the original author and source are acknowledged.

Please cite this article as: Jordan Gulli, Emily Cook, Eugene Kroll, Adam Rosebrock, Amy Caudy and Frank Rosenzweig (2019). Diverse conditions support near-zero growth in yeast: Implications for the study of cell lifespan. *Microbial Cell* 6(9): 397-413. doi: 10.15698/mic2019.09.690

### REFERENCES

1. Flatt T (2012). A New Definition of Aging? *Front Genet* 3: 148. doi: 10.3389/fgene.2012.00148
2. Mortimer RK, Johnston JR (1959). Life span of individual yeast cells. *Nature* 183(4677): 1751-1752. doi: 10.1038/1831751a0



3. Arlia-Ciommo A, Piano A, Leonov A, Svistkova V, Titorenko VI (2014). Quasi-programmed aging of budding yeast: a trade-off between programmed processes of cell proliferation, differentiation, stress response, survival and death defines yeast lifespan. *Cell Cycle* 13(21): 3336-3349. doi: 10.4161/15384101.2014.965063
4. Jo MC, Liu W, Gu L, Dang W, Qin L (2015). High-throughput analysis of yeast replicative aging using a microfluidic system. *Proc Natl Acad Sci U S A* 112(30): 9364-9369. doi: 10.1073/pnas.1510328112
5. Wasko BM, Kaeberlein M (2014). Yeast replicative aging: a paradigm for defining conserved longevity interventions. *FEMS Yeast Res* 14(1): 148-159. doi: 10.1111/1567-1364.12104
6. Stumpferl SW, Brand SE, Jiang JC, Korona B, Tiwari A, Dai J, Seo JG, Jazwinski SM (2012). Natural genetic variation in yeast longevity. *Genome Res* 22(10): 1963-1973. doi: 10.1101/gr.136549.111
7. Denoth Lippuner A, Julou T, Barral Y (2014). Budding yeast as a model organism to study the effects of age. *FEMS Microbiol Rev* 38(2): 300-325. doi: 10.1111/1574-6976.12060
8. Powers RW, 3rd, Kaeberlein M, Caldwell SD, Kennedy BK, Fields S (2006). Extension of chronological life span in yeast by decreased TOR pathway signaling. *Genes Dev* 20(2): 174-184. doi: 10.1101/gad.1381406
9. Burtner CR, Murakami CJ, Olsen B, Kennedy BK, Kaeberlein M (2011). A genomic analysis of chronological longevity factors in budding yeast. *Cell Cycle* 10(9): 1385-1396. doi: 10.4161/cc.10.9.15464
10. Garay E, Campos SE, Gonzalez de la Cruz J, Gaspar AP, Jinich A, Deluna A (2014). High-resolution profiling of stationary-phase survival reveals yeast longevity factors and their genetic interactions. *PLoS Genet* 10(2): e1004168. doi: 10.1371/journal.pgen.1004168
11. Burtner CR, Murakami CJ, Kennedy BK, Kaeberlein M (2009). A molecular mechanism of chronological aging in yeast. *Cell Cycle* 8(8): 1256-1270. doi: 10.4161/cc.8.8.8287
12. Smith DL, Jr., McClure JM, Maticic M, Smith JS (2007). Calorie restriction extends the chronological lifespan of *Saccharomyces cerevisiae* independently of the Sirtuins. *Aging Cell* 6(5): 649-662. doi: 10.1111/j.1474-9726.2007.00326.x
13. Lin S-J, Kaeberlein M, Andalis AA, Sturtz LA, Defossez P-A, Culotta VC, Fink GR, Guarente L (2002). Calorie restriction extends *Saccharomyces cerevisiae* lifespan by increasing respiration. *Nature* 418(6895):344-8. doi: 10.1038/nature00829
14. Boender LG, Almering MJ, Dijk M, van Maris AJ, de Winde JH, Pronk JT, Daran-Lapujade P (2011). Extreme calorie restriction and energy source starvation in *Saccharomyces cerevisiae* represent distinct physiological states. *Biochim Biophys Acta* 1813(12): 2133-2144. doi: 10.1016/j.bbamcr.2011.07.008
15. Zorova LD, Popkov VA, Plotnikov EY, Silachev DN, Pevzner IB, Jankauskas SS, Babenko VA, Zorov SD, Balakireva AV, Juhaszova M, Sollott SJ, Zorov DB (2018). Mitochondrial membrane potential. *Anal Biochem* 552: 50-59. doi: 10.1016/j.ab.2017.07.009
16. Delaney JR, Murakami C, Chou A, Carr D, Schleit J, Sutphin GL, An EH, Castanza AS, Fletcher M, Goswami S, Higgins S, Holmberg M, Hui J, Jelic M, Jeong KS, Kim JR, Klum S, Liao E, Lin MS, Lo W, Miller H, Moller R, Peng ZJ, Pollard T, Pradeep P, Pruett D, Rai D, Ros V, Schuster A, Singh M, et al. (2013). Dietary restriction and mitochondrial function link replicative and chronological aging in *Saccharomyces cerevisiae*. *Exp Gerontol* 48(10): 1006-1013. doi: 10.1016/j.exger.2012.12.001
17. Miceli MV, Jiang JC, Tiwari A, Rodriguez-Quinones JF, Jazwinski SM (2011). Loss of mitochondrial membrane potential triggers the retrograde response extending yeast replicative lifespan. *Front Genet* 2: 102. doi: 10.3389/fgene.2011.00102
18. Qin H, Lu M (2006). Natural variation in replicative and chronological life spans of *Saccharomyces cerevisiae*. *Exp Gerontol* 41(4): 448-456. doi: 10.1016/j.exger.2006.01.007
19. Kwan EX, Foss E, Kruglyak L, Bedalov A (2011). Natural polymorphism in *BUL2* links cellular amino acid availability with chronological aging and telomere maintenance in yeast. *PLoS Genet* 7(8): e1002250. doi: 10.1371/journal.pgen.1002250
20. Burtner CR, Murakami CJ, Olsen B, Kennedy BK, Kaeberlein M (2011). A genomic analysis of chronological longevity factors in budding yeast. *Cell Cycle* 10(9): 1385-1396. doi: 10.4161/cc.10.9.15464
21. Garay E, Campos SE, González de la Cruz J, Gaspar AP, Jinich A, DeLuna A (2014). High-Resolution Profiling of Stationary-Phase Survival Reveals Yeast Longevity Factors and Their Genetic Interactions. *PLoS Genet* 10(2): e1004168. doi: 10.1371/journal.pgen.1004168
22. Delaney JR, Murakami C, Chou A, Carr D, Schleit J, Sutphin GL, An EH, Castanza AS, Fletcher M, Goswami S, Higgins S, Holmberg M, Hui J, Jelic M, Jeong K-S, Kim JR, Klum S, Liao E, Lin MS, Lo W, Miller H, Moller R, Peng ZJ, Pollard T, Pradeep P, Pruett D, Rai D, Ros V, Schuster A, Singh M, et al. (2013). Dietary restriction and mitochondrial function link replicative and chronological aging in *Saccharomyces cerevisiae*. *Exp Gerontol* 48(10): 1006-1013. doi: 10.1016/j.exger.2012.12.001
23. Wei M, Madia F, Longo VD (2011). Studying age-dependent genomic instability using the *S. cerevisiae* chronological lifespan model. *J Vis Exp* 55: 3030. doi: 10.3791/3030
24. Fontana L, Partridge L, Longo VD (2010). Extending healthy life span--from yeast to humans. *Science* 328(5976): 321-326. doi: 10.1126/science.1172539
25. Swinnen E, Ghillebert R, Wilms T, Winderickx J (2014). Molecular mechanisms linking the evolutionary conserved TORC1-Sch9 nutrient signalling branch to lifespan regulation in *Saccharomyces cerevisiae*. *FEMS Yeast Res* 14(1): 17-32. doi: 10.1111/1567-1364.12097
26. Longo VD, Fabrizio P (2012). Chronological Aging in *Saccharomyces cerevisiae*. *Subcell Biochem* 57: 101-121. doi: 10.1007/978-94-007-2561-4\_5
27. He C, Zhou C, Kennedy BK (2018). The yeast replicative aging model. *Biochim Biophys Acta* 1864(9, Part A): 2690-2696. doi: 10.1016/j.bbadis.2018.02.023
28. Bourre JM (2006). Effects of nutrients (in food) on the structure and function of the nervous system: update on dietary requirements for brain. Part 2 : macronutrients. *J Nutr Health Aging* 10(5): 386-399. PMID: 17066210
29. Bergmann O, Zdunek S, Felker A, Salehpour M, Alkass K, Bernard S, Sjoström S, Szewczykowska M, Jackowska T, dos Remedios C, Malm T, Andrä M, Jashari R, Nyengaard J, Possnert G, Jovinge S, Druid H, Frisén J (2015). Dynamics of Cell Generation and Turnover in the Human Heart. *Cell* 161(7):1566-75. doi: 10.1016/j.cell.2015.05.026
30. Montarras D, L'Honore A, Buckingham M (2013). Lying low but ready for action: the quiescent muscle satellite cell. *Febs J* 280(17): 4036-4050. doi: 10.1111/febs.12372
31. Takubo K, Nagamatsu G, Kobayashi Chiharu I, Nakamura-Ishizu A, Kobayashi H, Ikeda E, Goda N, Rahimi Y, Johnson Randall S, Soga T, Hirao A, Suematsu M, Suda T (2013). Regulation of Glycolysis by Pdk Functions as a Metabolic Checkpoint for Cell Cycle Quiescence in Hematopoietic Stem Cells. *Cell Stem Cell* 12(1): 49-61. doi: 10.1016/j.stem.2012.10.011
32. Kocabas F, Xie L, Xie J, Yu Z, DeBerardinis RJ, Kimura W, Thet S, Elshamy AF, Abouellail H, Muralidhar S, Liu X, Chen C, Sadek HA, Zhang CC, Zheng J (2015). Hypoxic metabolism in human hematopoietic stem cells. *Cell Biosci* 5: 39. doi: 10.1186/s13578-015-0020-3.



33. Hu J, Wei M, Mirisola MG, Longo VD (2013). Assessing chronological Aging in *Saccharomyces cerevisiae*. **Methods Mol Biol** 965: 463-472. doi: 10.1007/978-1-62703-239-1\_30
34. Mináriková L, Kuthan M, Řičicová M, Forstová J, Palková Z (2001). Differentiated Gene Expression in Cells within Yeast Colonies. **Exp Cell Res** 271(2): 296-304. doi: 10.1006/excr.2001.5379
35. Palkova Z, Vachova L, Gaskova D, Kucerova H (2009). Synchronous plasma membrane electrochemical potential oscillations during yeast colony development and aging. **Mol Membr Biol** 26(4): 228-235. doi: 10.1080/09687680902893130
36. Váchová L, Čáp M, Palková Z (2012). Yeast Colonies: A Model for Studies of Aging, Environmental Adaptation, and Longevity. **Oxid Med Cell Longev** 2012: 601836. doi: 10.1155/2012/601836
37. Vachova L, Hatakova L, Cap M, Pokorna M, Palkova Z (2013). Rapidly developing yeast microcolonies differentiate in a similar way to aging giant colonies. **Oxid Med Cell Longev** 2013: 102485. doi: 10.1155/2013/102485
38. Cap M, Stepanek L, Harant K, Vachova L, Palkova Z (2012). Cell differentiation within a yeast colony: metabolic and regulatory parallels with a tumor-affected organism. **Mol Cell** 46(4): 436-448. doi: 10.1016/j.molcel.2012.04.001
39. Alberts B, Johnson A, Lewis J, Raff M, Roberts K and Walter P (2002). *Molecular Biology of the Cell*. **Garland Sciences, New York**.
40. Vachova L, Palkova Z (2011). Aging and longevity of yeast colony populations: metabolic adaptation and differentiation. **Biochem Soc Trans** 39(5): 1471-1475. doi: 10.1042/bst0391471
41. Marinkovic ZS, Vulin C, Acman M, Song X, Di Meglio JM, Lindner AB, Hersen P (2019). A microfluidic device for inferring metabolic landscapes in yeast monolayer colonies. **Elife** 8: e47951. doi: 10.7554/eLife.47951
42. Meunier JR, Choder M (1999). *Saccharomyces cerevisiae* colony growth and ageing: biphasic growth accompanied by changes in gene expression. **Yeast** 15(12): 1159-1169. doi: 10.1002/(sici)1097-0061(19990915)15:12<1159::aid-yea441>3.0.co;2-d
43. Oliver JD (2005). The viable but nonculturable state in bacteria. **J Microbiol** 43(1): 93-100. PMID: 15765062
44. Fabrizio P, Battistella L, Vardavas R, Gattazzo C, Liou LL, Diaspro A, Dossen JW, Gralla EB, Longo VD (2004). Superoxide is a mediator of an altruistic aging program in *Saccharomyces cerevisiae*. **J Cell Biol** 166(7): 1055-1067. doi: 10.1083/jcb.200404002
45. Fabrizio P, Battistella L, Vardavas R, Gattazzo C, Liou L-L, Diaspro A, Dossen JW, Gralla EB, Longo VD (2004). Superoxide is a mediator of an altruistic aging program in *Saccharomyces cerevisiae*. **J Cell Biol** 166(7): 1055-1067. doi: 10.1083/jcb.200404002
46. Vachova L, Palkova Z (2005). Physiological regulation of yeast cell death in multicellular colonies is triggered by ammonia. **J Cell Biol** 169(5): 711-717. doi: 10.1083/jcb.200410064
47. Piper PW, Harris NL, MacLean M (2006). Preadaptation to efficient respiratory maintenance is essential both for maximal longevity and the retention of replicative potential in chronologically ageing yeast. **Mech Ageing Dev** 127(9): 733-740. doi: 10.1016/j.mad.2006.05.004
48. Kaerberlein M, Hu D, Kerr EO, Tsuchiya M, Westman EA, Dang N, Fields S, Kennedy BK (2005). Increased life span due to calorie restriction in respiratory-deficient yeast. **PLoS Genet** 1(5): e69. doi: 10.1371/journal.pgen.0010069
49. Lee C, Longo V (2016). Dietary restriction with and without caloric restriction for healthy aging. **F1000Research** 5. doi: 10.12688/f1000research.7136.1
50. Vachova L, Cap M, Palkova Z (2012). Yeast colonies: a model for studies of aging, environmental adaptation, and longevity. **Oxid Med Cell Longev** 2012: 601836. doi: 10.1155/2012/601836
51. Váchová L, Palková Z (2018). How structured yeast multicellular communities live, age and die? **FEMS Yeast Res** 18(4). doi: 10.1093/femsyr/foy033
52. Palkova Z, Devaux F, Ilicova M, Minarikova L, Le Crom S, Jacq C (2002). Ammonia pulses and metabolic oscillations guide yeast colony development. **Mol Biol Cell** 13(11): 3901-3914. doi: 10.1091/mbc.e0112-0149
53. Palkova Z, Vachova L (2006). Life within a community: benefit to yeast long-term survival. **FEMS Microbiol Rev** 30(5): 806-824. doi: 10.1111/j.1574-6976.2006.00034.x
54. Vachova L, Kucerova H, Devaux F, Ulehlova M, Palkova Z (2009). Metabolic diversification of cells during the development of yeast colonies. **Environ Microbiol** 11(2): 494-504. doi: 10.1111/j.1462-2920.2008.01789.x
55. Palková Z, Váchová L (2003). Ammonia signaling in yeast colony formation. **Int Rev Cytol** 225: 229-272. doi: 10.1016/s0074-7696(05)25006-4
56. Čáp M, Štěpánek L, Harant K, Váchová L, Palková Z (2012). Cell Differentiation within a Yeast Colony: Metabolic and Regulatory Parallels with a Tumor-Affected Organism. **Mol Cell** 46(4): 436-448. doi: 10.1016/j.molcel.2012.04.001
57. Wilkinson D, Marsikova J, Hlavacek O, Gilfillan GD, Jezkova E, Aalokken R, Vachova L, Palkova Z (2018). Transcriptome Remodeling of Differentiated Cells during Chronological Ageing of Yeast Colonies: New Insights into Metabolic Differentiation. **Oxid Med Cell Longev** 2018: 4932905. doi: 10.1155/2018/4932905
58. Hinnebusch AG (2005). Translational regulation of GCN4 and the general amino acid control of yeast. **Annu Rev Microbiol** 59: 407-450. doi: 10.1146/annurev.micro.59.031805.133833
59. Palkova Z, Wilkinson D, Vachova L (2014). Aging and differentiation in yeast populations: elders with different properties and functions. **FEMS Yeast Res** 14(1): 96-108. doi: 10.1111/1567-1364.12103
60. Cap M, Vachova L, Palkova Z (2009). Yeast colony survival depends on metabolic adaptation and cell differentiation rather than on stress defense. **J Biol Chem** 284(47):32572-81. doi: 10.1074/jbc.M109.022871
61. Čáp M, Váchová L, Palková Z (2010). How to survive within a yeast colony. **Commun Integr Biol** 3(2): 198-200. doi: 10.4161/cib.3.2.11026
62. Kourtis N, Tavernarakis N (2011). Cellular stress response pathways and ageing: intricate molecular relationships. **EMBO J** 30(13): 2520-2531. doi: 10.1038/emboj.2011.162
63. Gralla EB, Valentine JS (1991). Null mutants of *Saccharomyces cerevisiae* Cu,Zn superoxide dismutase: characterization and spontaneous mutation rates. **J Bacteriol** 173(18): 5918-5920. doi: 10.1128/jb.173.18.5918-5920.1991
64. Longo VD, Gralla EB, Valentine JS (1996). Superoxide dismutase activity is essential for stationary phase survival in *Saccharomyces cerevisiae*. Mitochondrial production of toxic oxygen species in vivo. **J Biol Chem** 271(21): 12275-12280. doi: 10.1074/jbc.271.21.12275
65. Leontieva OV, Blagosklonny MV (2011). Yeast-like chronological senescence in mammalian cells: phenomenon, mechanism and pharmacological suppression. **Ageing** 3(11): 1078-1091. doi: 10.18632/aging.100402
66. Arismendi-Morillo GJ, Castellano-Ramirez AV (2008). Ultrastructural mitochondrial pathology in human astrocytic tumors: potential implications pro-therapeutics strategies. **J Electron Microsc** 57(1): 33-39. doi: 10.1093/jmicro/dfm038

67. Eng CH, Yu K, Lucas J, White E, Abraham RT (2010). Ammonia derived from glutaminolysis is a diffusible regulator of autophagy. **Sci Signal** 3(119): ra31-ra31. doi: 10.1126/scisignal.2000911
68. Čáp M, Váchová L, Palková Z (2015). Longevity of U cells of differentiated yeast colonies grown on respiratory medium depends on active glycolysis. **Cell Cycle** 14(21): 3488-3497. doi: 10.1080/15384101.2015.1093706
69. DeBerardinis RJ, Cheng T (2010). Q's next: the diverse functions of glutamine in metabolism, cell biology and cancer. **Oncogene** 29(3): 313-324. doi: 10.1038/onc.2009.358
70. Burnetti AJ, Aydin M, Buchler NE, Solomon MJ (2015). Cell cycle Start is coupled to entry into the yeast metabolic cycle across diverse strains and growth rates. **Mol Biol Cell** 27(1): 64-74. doi: 10.1091/mbc.e15-07-0454
71. Westman JO, Bonander N, Taherzadeh MJ, Franzen CJ (2014). Improved sugar co-utilisation by encapsulation of a recombinant *Saccharomyces cerevisiae* strain in alginate-chitosan capsules. **Biotechnol Biofuels** 7: 102. doi: 10.1186/1754-6834-7-102
72. Herbert D (1961). A theoretical analysis of continuous culture systems. In: Hastings DW, editor. Continuous culture of microorganisms. **Society of Chemical Industry, London, United Kingdom**; pp 21-53.
73. Monod J (1950). La technique de culture continue: theorie et applications. **Ann Inst Pasteur** 79: 390-410.
74. Novick A, Szilard L (1950). Description of the chemostat. **Science** 112(2920): 715-716. doi: 10.1126/science.112.2920.715
75. Edmunds LN (1972). Introduction to Research with Continuous Cultures. H. E. Kubitschek. **Q Rev Biol** 47(1): 88-88. doi: 10.1086/407133
76. Kubitschek HE (1954). Modifications of the chemostat. **J Bacteriol** 67(2): 254-255. PMID: 13129224
77. Novick A, Szilard L (1950). Experiments with the Chemostat on spontaneous mutations of bacteria. **Proc Natl Acad Sci U S A** 36(12): 708-719. doi: 10.1073/pnas.36.12.708
78. Boender LG, de Hulster EA, van Maris AJ, Daran-Lapujade PA, Pronk JT (2009). Quantitative physiology of *Saccharomyces cerevisiae* at near-zero specific growth rates. **Appl Environ Microbiol** 75(17): 5607-5614. doi: 10.1128/aem.00429-09
79. Boender LG, van Maris AJ, de Hulster EA, Almering MJ, van der Klei IJ, Veenhuis M, de Winde JH, Pronk JT, Daran-Lapujade P (2011). Cellular responses of *Saccharomyces cerevisiae* at near-zero growth rates: transcriptome analysis of anaerobic retentostat cultures. **FEMS Yeast Res** 11(8): 603-620. doi: 10.1111/j.1567-1364.2011.00750.x
80. Lewis JG, Northcott CJ, Learmonth RP, Attfield PV, Watson K (1993). The need for consistent nomenclature and assessment of growth phases in diauxic cultures of *Saccharomyces cerevisiae*. **Microbiol** 139(4): 835-839. doi: 10.1099/00221287-139-4-835
81. Foss EJ, Lao U, Dalrymple E, Adrianse RL, Loe T, Bedalov A (2017). SIR2 suppresses replication gaps and genome instability by balancing replication between repetitive and unique sequences. **Proc Natl Acad Sci U S A** 114(3): 552-557. doi: 10.1073/pnas.1614781114
82. Bellizzi D, Rose G, Cavalcante P, Covello G, Dato S, De Rango F, Greco V, Maggiolini M, Feraco E, Mari V, Franceschi C, Passarino G, De Benedictis G (2005). A novel VNTR enhancer within the SIRT3 gene, a human homologue of SIR2, is associated with survival at oldest ages. **Genomics** 85(2): 258-263. doi: 10.1016/j.ygeno.2004.11.003
83. Smith JT, White JW, Dungrawala H, Hua H, Schneider BL (2018). Yeast lifespan variation correlates with cell growth and SIR2 expression. **PLOS ONE** 13(7): e0200275. doi: 10.1371/journal.pone.0200275
84. Bellizzi D, Rose G, Cavalcante P, Covello G, Dato S, De Rango F, Greco V, Maggiolini M, Feraco E, Mari V, Franceschi C, Passarino G, De Benedictis G (2005). A novel VNTR enhancer within the SIRT3 gene, a human homologue of SIR2, is associated with survival at oldest ages. **Genomics** 85(2): 258-263. doi: 10.1016/j.ygeno.2004.11.003
85. Boender LGM, Almering MJH, Dijk M, van Maris AJA, de Winde JH, Pronk JT, Daran-Lapujade P (2011). Extreme calorie restriction and energy source starvation in *Saccharomyces cerevisiae* represent distinct physiological states. **Biochim Biophys Acta** 1813(12): 2133-2144. doi: 10.1016/j.bbamcr.2011.07.008
86. Binai NA, Bisschops MM, van Breukelen B, Mohammed S, Loeff L, Pronk JT, Heck AJ, Daran-Lapujade P, Slijper M (2014). Proteome adaptation of *Saccharomyces cerevisiae* to severe calorie restriction in Retentostat cultures. **J Proteome Res** 13(8): 3542-3553. doi: 10.1021/pr5003388
87. Webb KJ, Xu T, Park SK, Yates JR, 3rd (2013). Modified MuDPIT separation identified 4488 proteins in a system-wide analysis of quiescence in yeast. **J Proteome Res** 12(5): 2177-2184. doi: 10.1021/pr400027m
88. Binai NA, Bisschops MMM, van Breukelen B, Mohammed S, Loeff L, Pronk JT, Heck AJR, Daran-Lapujade P, Slijper M (2014). Proteome Adaptation of *Saccharomyces cerevisiae* to Severe Calorie Restriction in Retentostat Cultures. **J Proteome Res** 13(8): 3542-3553. doi: 10.1021/pr5003388
89. Camarasa C, Grivet J-P, Dequin S (2003). Investigation by <sup>13</sup>C-NMR and tricarboxylic acid (TCA) deletion mutant analysis of pathways for succinate formation in *Saccharomyces cerevisiae* during anaerobic fermentation. **Microbiol** 149(9): 2669-2678. doi: 10.1099/mic.0.26007-0
90. He W, Parker R (2000). Functions of Lsm proteins in mRNA degradation and splicing. **Curr Opin Cell Biol** 12(3): 346-350. doi: 10.1016/s0955-0674(00)00098-3
91. Fuge EK, Braun EL, Werner-Washburne M (1994). Protein synthesis in long-term stationary-phase cultures of *Saccharomyces cerevisiae*. **J Bacteriol** 176(18): 5802-5813. doi: 10.1128/jb.176.18.5802-5813.1994
92. Marguerat S, Schmidt A, Codlin S, Chen W, Aebersold R, Bahler J (2012). Quantitative analysis of fission yeast transcriptomes and proteomes in proliferating and quiescent cells. **Cell** 151(3): 671-683. doi: 10.1016/j.cell.2012.09.019
93. Helbig AO, Daran-Lapujade P, van Maris AJ, de Hulster EA, de Ridder D, Pronk JT, Heck AJ, Slijper M (2011). The diversity of protein turnover and abundance under nitrogen-limited steady-state conditions in *Saccharomyces cerevisiae*. **Mol Biosys** 7(12): 3316-3326. doi: 10.1039/c1mb05250k
94. Wang Y, Liu CL, Storey JD, Tibshirani RJ, Herschlag D, Brown PO (2002). Precision and functional specificity in mRNA decay. **Proc Natl Acad Sci U S A** 99(9): 5860-5865. doi: 10.1073/pnas.092538799
95. Verduyn C, Postma E, Scheffers WA, van Dijken JP (1990). Energetics of *Saccharomyces cerevisiae* in anaerobic glucose-limited chemostat cultures. **J Gen Microbiol** 136(3): 405-412. doi: 10.1099/00221287-136-3-405
96. Beck T, Schmidt A, Hall MN (1999). Starvation Induces Vacuolar Targeting and Degradation of the Tryptophan Permease in Yeast. **J Cell Biol** 146(6): 1227-1238. doi: 10.1083/jcb.146.6.1227
97. Albers E, Larsson C, Andlid T, Walsh MC, Gustafsson L (2007). Effect of Nutrient Starvation on the Cellular Composition and Metabolic Capacity of *Saccharomyces cerevisiae*. **Appl Environ Microbiol** 73(15): 4839-4848. doi: 10.1128/aem.00425-07
98. Jones CB, Ott EM, Keener JM, Curtiss M, Sandrin V, Babst M (2012). Regulation of membrane protein degradation by starvation-

- response pathways. **Traffic** 13(3): 468-482. doi: 10.1111/j.1600-0854.2011.01314.x
99. Suzuki SW, Onodera J, Ohsumi Y (2011). Starvation induced cell death in autophagy-defective yeast mutants is caused by mitochondria dysfunction. **PLoS One** 6(2): e17412. doi: 10.1371/journal.pone.0017412
100. Wei M, Fabrizio P, Hu J, Ge H, Cheng C, Li L, Longo VD (2008). Life span extension by calorie restriction depends on Rim15 and transcription factors downstream of Ras/PKA, Tor, and Sch9. **PLoS Genet** 4(1): e13. doi: 10.1371/journal.pgen.0040013
101. Stouthamer AH (1973). A theoretical study on the amount of ATP required for synthesis of microbial cell material. **Antonie Van Leeuwenhoek** 39(1): 545-565. doi: 10.1007/bf02578899
102. Allen C, Büttner S, Aragon AD, Thomas JA, Meirelles O, Jaetao JE, Benn D, Ruby SW, Veenhuis M, Madeo F, Werner-Washburne M (2006). Isolation of quiescent and nonquiescent cells from yeast stationary-phase cultures. **J Cell Biol** 174(1): 89-100. doi: 10.1083/jcb.200604072
103. Bisschops MMM, Luttk MAH, Doerr A, Verheijen PJT, Bruggeman F, Pronk JT, Daran-Lapujade P (2017). Extreme calorie restriction in yeast retentostats induces uniform non-quiescent growth arrest. **Biochim Biophys Acta** 1864(1): 231-242. doi: 10.1016/j.bbamcr.2016.11.002
104. Zimmermann A, Kainz K, Hofer S, Pendl T, Carmona-Gutierrez D, Madeo F (2018). Yeast as a tool to identify anti-aging compounds. **FEMS Yeast Res** 18(6). doi: 10.1093/femsyr/foy020
105. Gonzalez LM, Stewart AS, Freund J, Kucera CR, Dekaney CM, Magness ST, Blikslager AT (2019). Preservation of reserve intestinal epithelial stem cells following severe ischemic injury. **Am J Physiol Gastrointest Liver Physiol** 316(4): G482-G494. doi: 10.1152/ajpgi.00262.2018
106. Sato M, Kawana K, Adachi K, Fujimoto A, Yoshida M, Nakamura H, Nishida H, Inoue T, Taguchi A, Ogishima J, Eguchi S, Yamashita A, Tomio K, Wada-Hiraie O, Oda K, Nagamatsu T, Osuga Y, Fujii T (2017). Regeneration of cervical reserve cell-like cells from human induced pluripotent stem cells (iPSCs): A new approach to finding targets for cervical cancer stem cell treatment. **Oncotarget** 8(25): 40935-40945. doi: 10.18632/oncotarget.16783
107. Bisschops MMM, Zwartjens P, Keuter SGF, Pronk JT, Daran-Lapujade P (2014). To divide or not to divide: A key role of Rim15 in calorie-restricted yeast cultures. **Biochim Biophys Acta** 1843(5): 1020-1030. doi: 10.1016/j.bbamcr.2014.01.026
108. Hanahan D, Weinberg RA (2000). The hallmarks of cancer. **Cell** 100(1): 57-70. doi: 10.1016/s0092-8674(00)81683-9
109. Vos T, Hakkaart XD, de Hulster EA, van Maris AJ, Pronk JT, Daran-Lapujade P (2016). Maintenance-energy requirements and robustness of *Saccharomyces cerevisiae* at aerobic near-zero specific growth rates. **Microb Cell Fact** 15(1): 111. doi: 10.1186/s12934-016-0501-z
110. Sauer M, Mattanovich D (2016). Non-genetic impact factors on chronological lifespan and stress resistance of baker's yeast. **Microbial Cell** 3(6): 232-235. doi: 10.15698/mic2016.06.504
111. Ercan O, Bisschops MM, Overkamp W, Jorgensen TR, Ram AF, Smid EJ, Pronk JT, Kuipers OP, Daran-Lapujade P, Kleerebezem M (2015). Physiological and Transcriptional Responses of Different Industrial Microbes at Near-Zero Specific Growth Rates. **App Environ Microbiol** 81(17): 5662-5670. doi: 10.1128/aem.00944-15
112. Drury JL, Mooney DJ (2003). Hydrogels for tissue engineering: scaffold design variables and applications. **Biomaterials** 24(24): 4337-4351. doi: 10.1016/s0142-9612(03)00340-5
113. Nussinovitch A (2010). *Polymer Macro- and Micro-Gel Beads: Fundamentals and Applications*. Springer, New York. doi: 10.1007/978-1-4419-6618-6
114. Nedović V, Gibson B, Mantzouridou TF, Bugarski B, Djordjević V, Kalušević A, Paraskevopoulou A, Sandell M, Šmogrovičová D, Yilmaztekin M (2015). Aroma formation by immobilized yeast cells in fermentation processes. **Yeast** 32(1): 173-216. doi: 10.1002/yea.3042
115. Verrills NM (2006). Clinical proteomics: present and future prospects. **Clinical Biochem Rev** 27(2): 99-116. PMID: 17077880
116. Norton S, D'Amore T (1994). Physiological effects of yeast cell immobilization: Applications for brewing. **Enzyme and Microbial Technology** 16(5): 365-375. doi: 10.1016/0141-0229(94)90150-3
117. Talebnia F, Taherzadeh MJ (2007). Physiological and morphological study of encapsulated *Saccharomyces cerevisiae*. **Enzyme and Microbial Technology** 41(6): 683-688. doi: 10.1016/j.enzmictec.2007.05.020
118. Plessas S, Bekatorou A, Koutinas AA, Soupioni M, Banat IM, Marchant R (2007). Use of *Saccharomyces cerevisiae* cells immobilized on orange peel as biocatalyst for alcoholic fermentation. **Bioresour Technol** 98(4): 860-865. doi: 10.1016/j.biortech.2006.03.014
119. Li G-Y, Huang K-L, Jiang Y-R, Ding P (2007). Production of (R)-mandelic acid by immobilized cells of *Saccharomyces cerevisiae* on chitosan carrier. **Process Biochemistry** 42(10): 1465-1469. doi: 10.1016/j.procbio.2007.06.015
120. Behera S, Mohanty RC, Ray RC (2011). Ethanol production from mahula (*Madhuca latifolia* L.) flowers with immobilized cells of *Saccharomyces cerevisiae* in *Luffa cylindrica* L. sponge discs. **Applied Energy** 88(1): 212-215. doi: 10.1016/j.apenergy.2010.07.035
121. Verbelen PJ, De Schutter DP, Delvaux F, Verstrepen KJ, Delvaux FR (2006). Immobilized yeast cell systems for continuous fermentation applications. **Biotechnol Lett** 28(19): 1515-1525. doi: 10.1007/s10529-006-9132-5
122. Krisch J, Szajani B (1997). Ethanol and acetic acid tolerance in free and immobilized cells of *Saccharomyces cerevisiae* and *Acetobacter acetii*. **Biotechnol Lett** 19(6): 525-528. doi: 10.1023/a:1018329118396
123. Taipa MA, Cabral JM, Santos H (1993). Comparison of glucose fermentation by suspended and gel-entrapped yeast cells: An in vivo nuclear magnetic resonance study. **Biotechnol Bioeng** 41(6): 647-653. doi: 10.1002/bit.260410607
124. Qun J, Shanjiang Y, Lehe M (2002). Tolerance of immobilized baker's yeast in organic solvents. **Enzyme and Microbial Technology** 30(6): 721-725. doi: 10.1016/S0141-0229(02)00048-0
125. Desimone MF, Degrossi J, D'Aquino M, Diaz LE (2003). Sol-gel immobilisation of *Saccharomyces cerevisiae* enhances viability in organic media. **Biotechnol Lett** 25(9): 671-674. doi: 10.1023/a:1023481304479
126. Zaldivar J, Nielsen J, Olsson L (2001). Fuel ethanol production from lignocellulose: a challenge for metabolic engineering and process integration. **Appl Microbiol Biotechnol** 56(1-2): 17-34. doi: 10.1007/s002530100624
127. Sun Z-J, Lv G-J, Li S-Y, Xie Y-B, Yu W-T, Wang W, Ma X-J (2007). Probing the role of microenvironment for microencapsulated *Saccharomyces cerevisiae* under osmotic stress. **J Biotechnol** 128(1): 150-161. doi: 10.1016/j.jbiotec.2006.09.001
128. Ylittero P, Franzen CJ, Taherzadeh MJ (2011). Ethanol production at elevated temperatures using encapsulation of yeast. **J Biotechnol** 156(1): 22-29. doi: 10.1016/j.jbiotec.2011.07.018
129. Galazzo JL, Bailey JE (1990). Growing *Saccharomyces cerevisiae* in calcium-alginate beads induces cell alterations which accelerate glu-



- cose conversion to ethanol. **Biotechnol Bioeng** 36(4): 417-426. doi: doi:10.1002/bit.260360413
130. Nussinovitch A (2010). Bead Formation, Strengthening, and Modification. In: Nussinovitch A, editor *Polymer Macro- and Micro-Gel Beads: Fundamentals and Applications*. Springer, New York; pp 27-52.
131. Doran PM, Bailey JE (1986). Effects of immobilization on growth, fermentation properties, and macromolecular composition of *Saccharomyces cerevisiae* attached to gelatin. **Biotechnol Bioeng** 28(1): 73-87. doi: doi:10.1002/bit.260280111
132. Nagarajan S, Kruckeberg AL, Schmidt KH, Kröll E, Hamilton M, McInerney K, Summers R, Taylor T, Rosenzweig F (2014). Uncoupling reproduction from metabolism extends chronological lifespan in yeast. **Proc Natl Acad Sci U S A** 111(15): E1538-1547. doi: 10.1073/pnas.1323918111
133. Goossens KV, Ielasi FS, Nookaew I, Stals I, Alonso-Sarduy L, Daenen L, Van Mulders SE, Stassen C, van Eijsden RG, Siewers V, Delvaux FR, Kasas S, Nielsen J, Devreese B, Willaert RG (2015). Molecular mechanism of flocculation self-recognition in yeast and its role in mating and survival. **mBio** 6(2). doi: 10.1128/mBio.00427-15
134. Alexandre H (2013). Flor yeasts of *Saccharomyces cerevisiae*--their ecology, genetics and metabolism. **Int J Food Microbiol** 167(2): 269-275. doi: 10.1016/j.ijfoodmicro.2013.08.021
135. Honigberg SM (2011). Cell Signals, Cell Contacts, and the Organization of Yeast Communities. **Eukar Cell** 10(4): 466-473. doi: 10.1128/EC.00313-10
136. Goossens K, Willaert R (2010). Flocculation protein structure and cell-cell adhesion mechanism in *Saccharomyces cerevisiae*. **Biotechnol Lett** 32(11): 1571-1585. doi: 10.1007/s10529-010-0352-3
137. Bruckner S, Mosch HU (2012). Choosing the right lifestyle: adhesion and development in *Saccharomyces cerevisiae*. **FEMS Microbiol Rev** 36(1): 25-58. doi: 10.1111/j.1574-6976.2011.00275.x
138. Koschwanez JH, Foster KR, Murray AW (2013). Improved use of a public good selects for the evolution of undifferentiated multicellularity. **eLife** 2: e00367. doi: 10.7554/eLife.00367
139. Ratcliff WC, Denison RF, Borrello M, Travisano M (2012). Experimental evolution of multicellularity. **Proc Natl Acad Sci U S A** 109(5): 1595-1600. doi: 10.1073/pnas.1115323109
140. Holmes DL, Lancaster AK, Lindquist S, Halfmann R (2013). Heritable remodeling of yeast multicellularity by an environmentally responsive prion. **Cell** 153(1): 153-165. doi: 10.1016/j.cell.2013.02.026
141. Oud B, Guadalupe-Medina V, Nijkamp JF, de Ridder D, Pronk JT, van Maris AJ, Daran JM (2013). Genome duplication and mutations in ACE2 cause multicellular, fast-sedimenting phenotypes in evolved *Saccharomyces cerevisiae*. **Proc Natl Acad Sci U S A** 110(45): E4223-4231. doi: 10.1073/pnas.1305949110
142. Lei J, Zhao X, Ge X, Bai F (2007). Ethanol tolerance and the variation of plasma membrane composition of yeast floc populations with different size distribution. **J Biotechnol** 131(3): 270-275. doi: 10.1016/j.jbiotec.2007.07.937
143. Jeffries TW, Jin YS (2000). Ethanol and thermotolerance in the bioconversion of xylose by yeasts. **Adv Appl Microbiol** 47: 221-268. doi: 10.1016/s0065-2164(00)47006-1
144. Claro FB, Rijsbrack K, Soares EV (2007). Flocculation onset in *Saccharomyces cerevisiae*: effect of ethanol, heat and osmotic stress. **J App Microbiol** 102(3): 693-700. doi: 10.1111/j.1365-2672.2006.03130.x
145. Westman JO, Mapelli V, Taherzadeh MJ, Franzén CJ (2014). Flocculation Causes Inhibitor Tolerance in *Saccharomyces cerevisiae* for Second-Generation Bioethanol Production. **App Environ Microbiol** 80(22): 6908-6918. doi: 10.1128/AEM.01906-14
146. Westman JO, Taherzadeh MJ, Franzén CJ (2012). Proteomic analysis of the increased stress tolerance of *saccharomyces cerevisiae* encapsulated in liquid core alginate-chitosan capsules. **PLoS One** 7(11): e49335. doi: 10.1371/journal.pone.0049335
147. Wang Y, Dohlman HG (2004). Pheromone signaling mechanisms in yeast: a prototypical sex machine. **Science** 306(5701): 1508-1509. doi: 10.1126/science.1104568
148. Avbelj M, Zupan J, Raspor P (2016). Quorum-sensing in yeast and its potential in wine making. **Appl Microbiol Biotechnol** 100(18): 7841-7852. doi: 10.1007/s00253-016-7758-3
149. Albuquerque P, Casadevall A (2012). Quorum sensing in fungi--a review. **Med Mycol** 50(4): 337-345. doi: 10.3109/13693786.2011.652201
150. Richard P (2003). The rhythm of yeast. **FEMS Microbiol Rev** 27(4): 547-557. doi: 10.1016/s0168-6445(03)00065-2
151. Amemiya T, Obase K, Hiramatsu N, Itoh K, Shibata K, Takinoue M, Yamamoto T, Yamaguchi T (2015). Collective and individual glycolytic oscillations in yeast cells encapsulated in alginate microparticles. **Chaos** 25(6): 064606. doi: 10.1063/1.4921692
152. Shibata K, Amemiya T, Kawakita Y, Obase K, Itoh K, Takinoue M, Nakata S, Yamaguchi T (2018). Promotion and inhibition of synchronous glycolytic oscillations in yeast by chitosan. **Febs J** 285(14): 2679-2690. doi: 10.1111/febs.14513
153. Lin C-C, Anseth KS (2011). Cell-cell communication mimicry with poly(ethylene glycol) hydrogels for enhancing  $\beta$ -cell function. **Proc Natl Acad Sci U S A** 108(16): 6380-6385. doi: 10.1073/pnas.1014026108
154. Delarue M, Hartung J, Schreck C, Gniewek P, Hu L, Herminghaus S, Hallatschek O (2016). Self-Driven Jamming in Growing Microbial Populations. **Nat Phys** 12(8): 762-766. doi: 10.1038/nphys3741
155. Kruckeberg AL, Nagarajan S, McInerney K, Rosenzweig F (2009). Extraction of RNA from Ca-Alginate Encapsulated Yeast for Transcriptional Profiling. **Anal Biochem** 391(2): 160-162. doi: 10.1016/j.ab.2009.04.032
156. Maršiková J, Wilkinson D, Hlaváček O, Gilfillan GD, Mizeranschi A, Hughes T, Begany M, Rešetárová S, Váchová L, Palková Z (2017). Metabolic differentiation of surface and invasive cells of yeast colony biofilms revealed by gene expression profiling. **BMC Genomics** 18: 814. doi: 10.1186/s12864-017-4214-4
157. Sobering AK, Jung US, Lee KS, Levin DE (2002). Yeast Rpi1 Is a Putative Transcriptional Regulator That Contributes to Preparation for Stationary Phase. **Eukar Cell** 1(1): 56-65. doi: 10.1128/EC.1.1.56-65.2002
158. Tsang F, Lin S-J (2015). Less is more: Nutrient limitation induces cross-talk of nutrient sensing pathways with NAD(+) homeostasis and contributes to longevity. **Front Biol** 10(4): 333-357. doi: 10.1007/s11515-015-1367-x
159. Fabrizio P, Pozza F, Pletcher SD, Gendron CM, Longo VD (2001). Regulation of longevity and stress resistance by Sch9 in yeast. **Science** 292(5515): 288-290. doi: 10.1126/science.1059497
160. Bisschops MM, Zwartjens P, Keuter SG, Pronk JT, Daran-Lapujade P (2014). To divide or not to divide: a key role of Rim15 in calorie-restricted yeast cultures. **Biochim Biophys Acta** 1843(5): 1020-1030. doi: 10.1016/j.bbamcr.2014.01.026
161. Mai B, Breeden L (1997). Xbp1, a stress-induced transcriptional repressor of the *Saccharomyces cerevisiae* Swi4/Mbp1 family. **Mol Cell Biol** 17(11): 6491-6501. doi: 10.1128/mcb.17.11.6491
162. Miles S, Li L, Davison J, Breeden LL (2013). Xbp1 directs global repression of budding yeast transcription during the transition to quiescence and is important for the longevity and reversibility of the

- quiescent state. **PLoS Genet** 9(10): e1003854. doi: 10.1371/journal.pgen.1003854
163. Zegerman P, Diffley JFX (2009). DNA replication as a target of the DNA damage checkpoint. **DNA Repair** 8(9): 1077-1088. doi: 10.1016/j.dnarep.2009.04.023
164. Neganova I, Lako M (2008). G1 to S phase cell cycle transition in somatic and embryonic stem cells. **J Anat** 213(1): 30-44. doi: 10.1111/j.1469-7580.2008.00931.x
165. Teng X, Hardwick JM (2013). Quantification of genetically controlled cell death in budding yeast. **Methods Mol Biol** 1004: 161-70. doi: 10.1007/978-1-62703-383-1\_12
166. Pardee AB (1974). A restriction point for control of normal animal cell proliferation. **Proc Natl Acad Sci U S A** 71(4): 1286-1290. doi: 10.1073/pnas.71.4.1286
167. Collier HA (2007). What's taking so long? S-phase entry from quiescence versus proliferation. **Nat Rev Mol Cell Biol** 8(8): 667-670. doi: 10.1038/nrm2223
168. Spencer SL, Cappell SD, Tsai FC, Overton KW, Wang CL, Meyer T (2013). The proliferation-quiescence decision is controlled by a bifurcation in CDK2 activity at mitotic exit. **Cell** 155(2): 369-383. doi: 10.1016/j.cell.2013.08.062
169. Magrassi L, Leto K, Rossi F (2013). Lifespan of neurons is uncoupled from organismal lifespan. **Proc Natl Acad Sci U S A** 110(11): 4374-4379. doi: 10.1073/pnas.1217505110
170. Petralia RS, Mattson MP, Yao PJ (2014). Aging and longevity in the simplest animals and the quest for immortality. **Ageing Res Rev** 16: 66-82. doi: 10.1016/j.arr.2014.05.003
171. Lemons JM, Feng XJ, Bennett BD, Legesse-Miller A, Johnson EL, Raitman I, Pollina EA, Rabinowitz HA, Rabinowitz JD, Collier HA (2010). Quiescent fibroblasts exhibit high metabolic activity. **PLoS Biol** 8(10): e1000514. doi: 10.1371/journal.pbio.1000514
172. Rosebrock AP, Caudy AA (2017). Metabolite Extraction from *Saccharomyces cerevisiae* for Liquid Chromatography-Mass Spectrometry. **Cold Spring Harb Protoc** 2017(9): pdb.prot089086. doi: 10.1101/pdb.prot089086