

University of Montana

ScholarWorks at University of Montana

University of Montana News Releases, 1928,
1956-present

University Relations

8-1-2016

August 2016 news releases

University of Montana–Missoula. Office of University Relations

Follow this and additional works at: <https://scholarworks.umt.edu/newsreleases>

Let us know how access to this document benefits you.

Recommended Citation

University of Montana–Missoula. Office of University Relations, "August 2016 news releases" (2016).
University of Montana News Releases, 1928, 1956-present. 22192.
<https://scholarworks.umt.edu/newsreleases/22192>

This News Article is brought to you for free and open access by the University Relations at ScholarWorks at University of Montana. It has been accepted for inclusion in University of Montana News Releases, 1928, 1956-present by an authorized administrator of ScholarWorks at University of Montana. For more information, please contact scholarworks@mso.umt.edu.



A to Z

my.umt.edu

UM News

[UM](#) / [News](#) / [2016](#) / August

August 2016 News

08/31/2016 - [UM Welcomes Fulbright Professors to Campus](#) - Liz Ametsbichler

08/31/2016 - [Missoula College Students Pass Surgical Tech Exam with Flying Colors](#) - Debbie Fillmore

08/29/2016 - [Gift Brings New 500-Seat Auditorium to UM](#) - Peter Knox

08/29/2016 - [Brain Health Expert to Open President's Lecture Series at UM](#) - Richard Drake

08/26/2016 - [Candidates for U.S. House Seat to Debate on Montana Public Radio](#) - Eric Whitney

08/26/2016 - [UM Jazz Artist Series to Pair Local Legend with NYC, Chicago Artists](#) - Rob Tapper

08/25/2016 - [UM Students Invited to Join Japan Education Tour](#) - Caitlin Sager

08/25/2016 - [UM Physical Therapy Clinic Offers Free Consultations for Students, Faculty, Staff](#) - UM Physical Therapy Clinic

08/24/2016 - [Renowned Oceanographer Joins UM Flathead Lake Bio Station Faculty](#) - Tom Bansak

08/23/2016 - [UM Students, Researchers to Share Hands-on Learning at River City Roots Festival](#) - Nathalie Wolfram

- 08/22/2016** - [UM President to Deliver State of the University Address Aug. 26](#) - Paula Short
- 08/19/2016** - [UM Launches Third Wilderness Experience for Incoming Freshmen](#) - Natalie Dawson
- 08/19/2016** - [UM Offers First Certificate Program for Health Coaching in Montana](#) - Jessica Vizzutti
- 08/18/2016** - [New UM Student-Produced 'Business: Made in Montana' to Premiere on MontanaPBS](#) - Ray Ekness
- 08/17/2016** - [Groundbreaking UM Climate Change Research Topic of New Book](#) - Scott Mills
- 08/16/2016** - [UM Launches 'UMontana' Mobile App](#) - Cary Shimek
- 08/16/2016** - [UM Launches Statewide Adaptive Bike, Recreation Initiative](#) - Mindy Renfro
- 08/15/2016** - [Teachers Now Can Earn International Baccalaureate Certification at UM](#) - Peter Knox
- 08/11/2016** - [Another Record Year for University of Montana Foundation: Three-Year Fundraising Tops \\$150M, Including \\$51M for Scholarships](#) - Kate Stober
- 08/09/2016** - [UM Student Researchers to Share Hands-on Learning at Western Montana Fair](#) - Nathalie Wolfram
- 08/05/2016** - [Sociology Professor from Ethiopian University to Speak at UM](#) - Dan Doyle
- 08/04/2016** - [Brand New to Perform at UM Oct. 27](#) - Chanelle Paakkonen
- 08/04/2016** - [UM Alum to Advise Montana Manufacturers in New Role](#) - Patrick Barkey
- 08/04/2016** - [UM Offers New Sexual Assault Response, Prevention Certificate Program](#) - Peter Knox
- 08/03/2016** - [Register Now for UM Blackstone LaunchPad's New Entrepreneurial Conference](#) - Morgan Slemberger
- 08/03/2016** - [UM Hires New Broadcast Media Center Director](#) - Cary Shimek
- 08/03/2016** - [2016 Annual Economic Update Addresses Competition for Talent in Montana](#) - Pat Barkey
- 08/02/2016** - [UM Biomolecular Center Earns \\$10.5 Million Grant](#) - Stephen Sprang
- 08/02/2016** - [Forensic Science Expert to Deliver Keynote Lecture at Medicolegal Death Conference](#) - Ginger Claussen
- 08/01/2016** - [UM Research: Mountain Environments More Vulnerable to Climate Change than Previously Reported](#) - Solomon Dobrowski



University of Montana
32 Campus Drive
Missoula, MT 59812
Phone: (406) 243-2522
news@umontana.edu

Get Involved

[Submit a Calendar Event](#)
[Request a News Release](#)
[Suggest a Story Idea](#)

Quick Links

[News Archive](#)
[Events Calendar](#)
[University Relations](#)

[About UM](#) | [Accessibility](#) | [Administration](#) | [Contact UM](#) | [Directory](#) | [Employment](#) | [Safety](#) | [Privacy Policy](#) | [Campus Map](#)

UM News

[UM](#) / [News](#) / [2016](#) / [August](#) / [UM Welcomes Fulbright Professors to Campus](#)

UM Welcomes Fulbright Professors to Campus

August 31, 2016

MISSOULA – This week two international language teachers joined the University of Montana as Fulbright Foreign Language Teaching Assistants.

Karoline Fuchs from Austria is teaching first-year German, and Martina Fontanarosa from Italy is teaching first-year Italian. The FLTA recipients also will take courses at UM during the 2016-17 academic year while sharing their language and culture with UM.

“We are happy to once again be able to host FLTAs at UM and are thrilled to be able to welcome an assistant from Italy for the first time,” said Liz Ametsbichler, UM Fulbright Program adviser.

Fuchs and Fontanarosa are among nearly 400 young educators from 50 countries who will travel to the United States through the Fulbright FLTA Program, which aims to inspire Americans to travel and study overseas and



make U.S. citizens better prepared to engage with businesses, governments and organizations abroad. Fulbright teaching assistants help internationalize U.S. colleges and universities, a key goal of many institutions as they prepare students for a 21st century workforce and globalized world.

Recipients of Fulbright FLTA grants are selected on the basis of academic and professional achievement, as well as demonstrated leadership potential. Fulbright FLTA scholarships are awarded by the J. William Fulbright Foreign Scholarship Board.

This academic year the grant recipients will contribute to U.S. students acquiring more than 30 foreign languages at over 200 U.S. institutions. The primary source of funding for the Fulbright Program is an annual appropriation made by the U.S. Congress to the U.S. Department of State. Participating governments, universities, corporations and foundations in foreign countries and in the United States also provide direct and indirect support.

The Fulbright Program was established in 1946 under legislation introduced by U.S. Sen. J. William Fulbright of Arkansas. The Fulbright Program has given about 360,000 students, scholars, teachers, artists and scientists the opportunity to study, teach and conduct research, exchange ideas and contribute to finding solutions to shared international concerns. Since 2001, more than 4,000 Fulbright awardees have been Fulbright FLTAs.



Fulbright FLTA recipients are among over 50,000 individuals participating in U.S. Department of State exchange programs each year. The Fulbright FLTA Program is administered by the Institute of International Education.

For more information on UM's visiting Fulbright instructors, call Ametsbichler at 406-243-5001 or email liz.ametsbichler@mso.umt.edu.

For further information about the Fulbright FLTA Program, call the Bureau of Educational and Cultural Affairs at 202-632-6452, email ECA-Press@state.gov or visit <http://eca.state.gov/fulbright> or <http://foreign.fulbrightonline.org/>.

###

Contact: Liz Ametsbichler, UM Fulbright Program adviser, 406-243-5001, liz.ametsbichler@mso.umt.edu.

Get Involved

[Submit a Calendar Event](#)

[Request a News Release](#)

[Suggest a Story Idea](#)



University of Montana
32 Campus Drive
Missoula, MT 59812
Phone: (406) 243-2522
news@umontana.edu

Quick Links

[News Archive](#)
[Events Calendar](#)
[University Relations](#)

[About UM](#) | [Accessibility](#) | [Administration](#) | [Contact UM](#) | [Directory](#) | [Employment](#) | [Safety](#) | [Privacy Policy](#) | [Campus Map](#)



A to Z

my.umt.edu

UM News

[UM](#) / [News](#) / [2016](#) / [August](#) / Missoula College Students Pass Surgical Tech Exam with Flying Colors

Missoula College Students Pass Surgical Tech Exam with Flying Colors

August 31, 2016

MISSOULA – Twenty students from Missoula College recently passed their national surgical technology certification exam with a 100 percent pass rate and earned their associate degree in surgical technology.

The surgical technology program at Missoula College teaches students to work with surgeons, anesthesia providers, registered nurses and other perioperative personnel to provide patient care before, during and after surgery. Ninety-five percent of Missoula College surgical technology students had job offers before graduation in May.

The computerized certification exam, administered by the National Board of Surgical Technology/Surgical Assisting, is composed of 200 multiple-choice questions measuring the broad range of skills required by the profession. Students must demonstrate competence and mastery in their knowledge of asepsis, sterile technique, basic sciences, preoperative, intraoperative and postoperative case management, materials management, sterilization, legal concepts and other specific skills.

An individual who receives a passing score on the exam earns the credential of certified surgical technologist and the CST designation after their name. Students must graduate from a program accredited by the Commission on

Accreditation of Allied Health Education Programs to take the exam. The Accreditation Review Council on Surgical Technology/Surgical Assisting requires all programs have an exam pass rate outcome of at least 70 percent.

Students who pass the exam demonstrate that their program meets the national standard for knowledge underlying surgical technologist practice in guiding the certified individuals to obtain and master a broad range of skills related to surgical procedures, aseptic technique and quality patient care.

For more information on the surgical technology program at Missoula College, visit

<http://mc.umt.edu/health/surgicaltech/default.php>.

Contact: Debbie Fillmore, Missoula College surgical technology program director, 406-243-7860, debbie.fillmore@mso.umt.edu.



University of Montana
32 Campus Drive
Missoula, MT 59812
Phone: (406) 243-2522
news@umontana.edu

Get Involved

[Submit a Calendar Event](#)
[Request a News Release](#)
[Suggest a Story Idea](#)

Quick Links

[News Archive](#)
[Events Calendar](#)
[University Relations](#)

UM News

[UM](#) / [News](#) / [2016](#) / [August](#) / Gift Brings New 500-Seat Auditorium to UM

Gift Brings New 500-Seat Auditorium to UM

August 29, 2016

MISSOULA – Imagine a place where teachers, legislators, researchers and students can gather to be inspired and equipped – a hub that exists to cast a new vision for education and encourage solutions nationwide.

Imagine if that place was located right here in Montana.

The University of Montana's Phyllis J. Washington College of

Education and Human Sciences has imagined that place. And now, thanks to a \$5 million gift from the Alice Lee

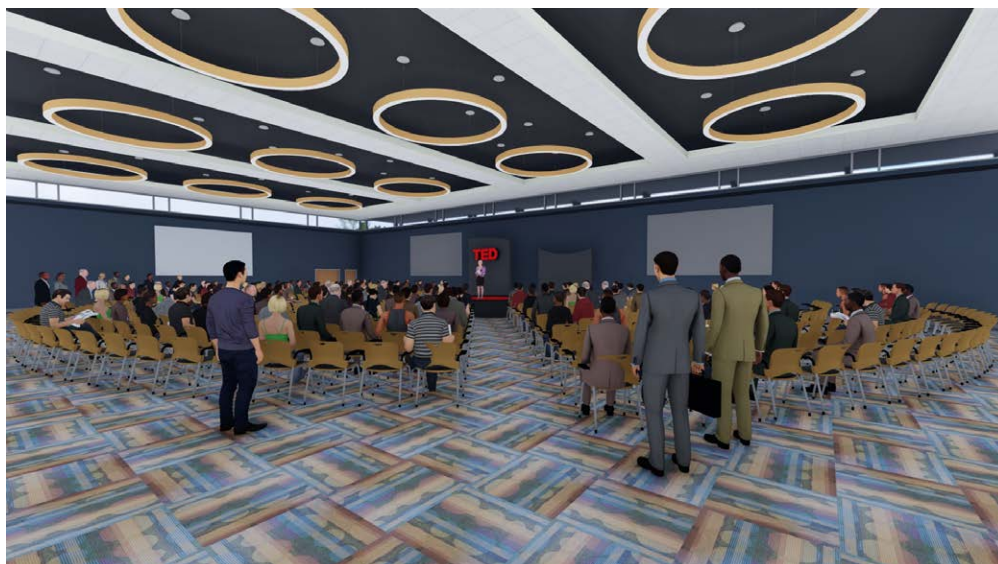


Lund Charitable Trust, the college will expand its facilities to include a public, state-of-the-art auditorium – the largest classroom and presentation venue at UM.

It all started with Alice “Ali” Lee Lund, who earned both her bachelor’s and master’s degrees in education at UM before launching her career as a teacher. Born and raised in North Dakota, Ali grew to care deeply about Missoula during her time as a student. Before her passing in 2001, she established a charitable trust and named her alma mater as one of the specific organizations to benefit from her generosity. Upon her death, Ali’s brother, Wes Moholt, took over management of the trust, working diligently to honor his late sister’s wishes.

“As the original trustee, Wes positioned the trust for its current success,” said Ron Nelson, attorney at the Church, Harris, Johnson & Williams, P.C. law firm, which now manages the Alice Lee Lund Charitable Trust. “It was because of his foresight and diligence that the trust has grown to a level that will allow it to benefit organizations throughout our region, and honor Ali’s vision for many years.”

The Lund Trust’s investment will fund the Ali Lund Instructional (ALI) Auditorium, a technologically advanced, 500-seat hall fully equipped to promote 21st century learning. As a key component of the education college’s strategic priorities and developing plan for expansion, the ALI Auditorium will serve as a one-of-a-kind classroom, conference and presentation space that will be unrivaled in the region.



Since the completion of the Phyllis J. Washington Education Center in 2009, the college has experienced steady growth throughout its programs. With that growth came unprecedented reach, extending advanced research and tools developed in Missoula to educators across the state and, eventually, the nation.

The ALI Auditorium will contribute to that reach by providing a dynamic, stimulating environment for numerous statewide, national and international seminars, conferences and lectures. Additionally, it will be open to departments across UM’s campus and local community groups, making it a valuable addition to the region as a whole.

“The ALI Auditorium is a vital part of our vision for the future,” said Roberta Evans, dean of UM’s education college. “Thanks to its namesake, the ALI Auditorium will serve as a catalyst for bringing the rest of the world to UM, and will allow the expertise and innovation fostered here to extend across the globe.”

###

Contact: Peter Knox, Phyllis J. Washington College of Education and Human Sciences communication and outreach manager, 406-243-4911, peter.knox@mso.umt.edu; Rachel Brumfield, UM Foundation marketing coordinator, 406-243-5691, rachel.brumfield@mso.umt.edu.



University of Montana
32 Campus Drive
Missoula, MT 59812
Phone: (406) 243-2522
news@umontana.edu

Get Involved

[Submit a Calendar Event](#)
[Request a News Release](#)
[Suggest a Story Idea](#)

Quick Links

[News Archive](#)
[Events Calendar](#)
[University Relations](#)

[About UM](#) | [Accessibility](#) | [Administration](#) | [Contact UM](#) | [Directory](#) | [Employment](#) | [Safety](#) | [Privacy Policy](#) | [Campus Map](#)



A to Z

my.umt.edu

UM News

[UM](#) / [News](#) / [2016](#) / [August](#) / Brain Health Expert to Open President's Lecture Series at UM

Brain Health Expert to Open President's Lecture Series at UM

August 29, 2016

MISSOULA – A leading expert on dementia, autism and traumatic brain injury will open the 2016-17 President's Lecture Series at the University of Montana.

Erin Bigler, a past president of the International Neuropsychological Society, will present "Brain Health, Aging and Alzheimer's Disease: Perspectives from Neuroimaging and Neuropsychology" at 8 p.m. Monday, Sept. 12, in UM's Dennison Theatre.

In collaboration with the Philosophy Forum, Bigler also will lead the seminar "Neuroimaging Methods in the Study of Neural Connectivity in Brain Health and Disease" from 3 to 4:30 p.m. the same day in Gallagher Business Building Room 123. The lecture and seminar both are free and open to the public.

Bigler received a Ph.D. in experimental-physiological psychology from Brigham Young University in 1974. Following postdoctoral work at the Barrow Neurological Institute in Phoenix, he worked in private practice at the Austin Neurological Clinic and EEG Laboratory in Austin, Texas, from 1978 to 1990. During these years he did adjunct teaching at the University of Texas at Austin.

In 1991, Bigler became the Steven V. and Georgia A. White Professor of Psychology at Brigham Young University and from 1996 to 2002 served as chair of the psychology department. Since 2003, he has been the Susa Young Gates Professor of Psychology and Neuroscience at Brigham Young University and has had visiting appointments at the University of Utah and the University of California, San Diego.

The publications section of Bigler's CV runs to 42 single-spaced pages. His eight book publications include "Diagnostic Clinical Neuropsychology" (1988), "Traumatic Brain Injury: Mechanisms of Damage Assessment, Intervention and Outcome" (1990), "Neuroimaging I Basic Science" (1996) and "Neuroimaging II Clinical Applications" (1996).

His research on dementia, autism and traumatic brain injury has appeared in the Journal of Autism and Developmental Disorders, the Journal of the International Neuropsychological Society, Autism Spectrum Disorder, Clinical Manual of Alzheimer Disease and other Dementias, and Psychological Injury and Law.

The President's Lecture Series at UM consists of eight talks throughout the academic year on vital topics by distinguished guest speakers. For more information on the series, visit <http://umt.edu/president/events/lectures/> or call UM history Professor Richard Drake at 406-243-2981.

Contact: Richard Drake, UM history professor and lecture series organizer, 406-243-2981, richard.drake@umontana.edu.



University of Montana
32 Campus Drive
Missoula, MT 59812
Phone: (406) 243-2522
news@umontana.edu

Get Involved

[Submit a Calendar Event](#)
[Request a News Release](#)
[Suggest a Story Idea](#)

Quick Links

[News Archive](#)
[Events Calendar](#)
[University Relations](#)

[Campus Map](#)



A to Z

my.umt.edu

UM News

[UM](#) / [News](#) / [2016](#) / [August](#) / Candidates for U.S. House Seat to Debate on Montana Public Radio

Candidates for U.S. House Seat to Debate on Montana Public Radio

August 26, 2016

MISSOULA – Montana Public Radio will broadcast two debates in the next few days featuring the candidates vying for Montana's lone seat in the U.S. House. MTPR, in partnership with Yellowstone Public Radio, will air both debates live on-the-air and stream them live on the web at <http://mtpr.org/>.

Republican incumbent Ryan Zinke and Democratic challenger Denise Juneau will first debate at 7 p.m. Monday, Aug. 29, on the Ft. Peck Indian Reservation town of **Frazer**.

Yellowstone Public Radio and the Glasgow Courier newspaper will moderate the debate. It is being sponsored by the McCone, Roosevelt and Valley County Farm Bureaus and the Montana Farm Bureau.

The second debate happens at 7 p.m. Thursday, Sept. 1, on the campus of Montana State University-**Billings**. A panel of journalists from Yellowstone Public Radio, the Billings Gazette and Cowles Montana Media will ask questions of Zinke, Juneau and Libertarian candidate Mike Fellows.

Montana Public Radio is a service of the University of Montana-Missoula. Montana Public Radio FM broadcast

stations are 89.1 Missoula (KUFM), 91.5 Missoula, city (K218AI), 91.9 Hamilton (KUFN), 89.5 Polson (KPJH), 90.1 Kalispell, Whitefish, North Valley (KUKL) 90.5 Libby (KUFL), 91.7 Kalispell, city (K219BN), 101.3 Swan Lake (K267BJ), 91.3 Butte (KAPC), 91.7 Helena (KUHM), 91.7 Dillon (K219DN) and 89.9 Great Falls (KGPR).

###

Contact: Eric Whitney, KUFM news director, 406-243-4075, eric.whitney@umontana.edu.



University of Montana
32 Campus Drive
Missoula, MT 59812
Phone: (406) 243-2522
news@umontana.edu

Get Involved

[Submit a Calendar Event](#)
[Request a News Release](#)
[Suggest a Story Idea](#)

Quick Links

[News Archive](#)
[Events Calendar](#)
[University Relations](#)

[About UM](#) | [Accessibility](#) | [Administration](#) | [Contact UM](#) | [Directory](#) | [Employment](#) | [Safety](#) | [Privacy Policy](#) | [Campus Map](#)



A to Z

my.umt.edu

UM News

[UM](#) / [News](#) / [2016](#) / [August](#) / [UM Jazz Artist Series to Pair Local Legend with NYC, Chicago Artists](#)

UM Jazz Artist Series to Pair Local Legend with NYC, Chicago Artists

August 26, 2016

MISSOULA – The second annual University of Montana Jazz Artist Series will fuse the swinging sounds of New York City and Chicago jazz with a local musician known for his brilliance on the piano.

Missoula's own David Morgenroth will take the stage with woodwind artist Victor Goines, a member of the Jazz at Lincoln Center Orchestra in New York City, and Chicago-based bass player Emma Dayhuff, originally from Bozeman, and drummer Greg Artry. The performance will be held at 7:30 p.m. Wednesday, Sept. 7, in the Music Building Recital Hall at UM.

All musicians in the quartet have international experience performing and educating musicians. This is the first concert of the year in the Jazz Artist Series, which is organized by UM's Jazz Studies program.

"Our program offers a truly educational experience for all – community members, jazz lovers, young aspiring musicians and especially our own college students," said Rob Tapper, director of Jazz Studies at UM, assistant professor of trombone and artistic director of the Jazz Artist Series.

Tickets for the Victor Goines Quartet performance are available through the UMArts Box Office online at <http://www.umt.edu/umarts/boxoffice/> or by phone at 406-243-4581 from 10 a.m. to 6 p.m. Monday through Friday. Tickets cost \$25 for adults, \$15 for seniors or \$10 for students.

The Jazz Artist Series features international artists in concerts throughout the school year. Vocalist Huey Lewis will serve as Master of Ceremonies for a Nov. 18 concert, Missoula woodwind artist Gary Herbig will perform in the fifth annual Holiday Swing on Dec. 10, and the 37th annual Buddy DeFranco Jazz Festival will cap off the series March 16-17, 2017.

The emphasis of the jazz series is on performance, education, improvisation and the jazz language. In addition to performances, guest artists will lead clinics and master classes while at UM. For more information on the series or special sessions and clinics, call Tapper at 406-243-6880.

###

Contact: Rob Tapper, director, UM Jazz Studies, 406-243-6880, robert.tapper@umontana.edu.



University of Montana
32 Campus Drive
Missoula, MT 59812
Phone: (406) 243-2522
news@umontana.edu

Get Involved

[Submit a Calendar Event](#)
[Request a News Release](#)
[Suggest a Story Idea](#)

Quick Links

[News Archive](#)
[Events Calendar](#)
[University Relations](#)



A to Z

my.umt.edu

UM News

[UM](#) / [News](#) / [2016](#) / [August](#) / [UM Students Invited to Join Japan Education Tour](#)

UM Students Invited to Join Japan Education Tour

August 25, 2016

MISSOULA – The Ministry of Foreign Affairs of Japan and the Japan Foundation have selected the University of Montana and its Mansfield Center to participate in the KAKEHASHI Project grant.

The funding will send 23 UM undergraduate or graduate students and two supervisors to Japan for a 10-day guided culture, education and policy exchange program managed by the Japan International Cooperation Center.

The Japanese government will cover the majority of program costs, including airfare, lodging and tour costs. The tour will be Oct. 31 through Nov. 8. Application information is available at <http://www.umt.edu/mansfield/>. Applications will be accepted until Sept. 9.

The program is designed for adventurous and mature students who have a serious interest in Asia but have not studied in or traveled in Japan for an extended period. Scheduled activities include meetings with government and business officials, cultural tours, lectures on Japanese society and engaging with Japanese people.

The program sponsor pays for international airfare, lodging, program meals and transportation and admission fees

associated with program activities. Participants are responsible for all other costs, including passports and vaccinations.

The tour is open to students of all majors and backgrounds, but it is especially suited to students studying international business, economics, public policy, sociology, foreign affairs, energy or agriculture. The program does not require any prior knowledge of the Japanese language. No academic credit is provided by the program.

The KAKEHASHI Project is part of "Japan's Friendship Ties Programs" designed to promote people-to-people exchanges between Japan and countries across the world. The KAKEHASHI Project promotes mutual trust and understanding among the people of Japan and the U.S. to facilitate economic and diplomatic relationships. It also contributes to finding and fostering more experts on Japan.

The Japan International Cooperation Center, the implementing agency of the KAKEHASHI Project, has been involved in various international cooperation activities since its establishment in 1977. JICE manages international training courses for the Japanese Ministry of Foreign Affairs, the Japan International Cooperation Agency, universities, local governments, foreign governments and private organizations. JICE's motto is "Share knowledge and experience. For our world. For the future."

UM's Mansfield Center promotes better understanding of Asia, U.S. relations with Asia and ethics in public affairs in the spirit of Sen. Mike Mansfield (1903-2001) and his wife and life partner, Maureen Hayes Mansfield. The center houses programs that focus on the peoples and cultures of modern Asia and ethics in public affairs – the core interests and hallmarks of Sen. Mansfield's career.

###

Contact: Caitlin Sager, program coordinator, UM Maureen and Mike Mansfield Center, 406-243-2965, caitlin.sager@mso.umt.edu.



University of Montana
32 Campus Drive
Missoula, MT 59812
Phone: (406) 243-2522
news@umontana.edu

Get Involved

[Submit a Calendar Event](#)
[Request a News Release](#)
[Suggest a Story Idea](#)

Quick Links

[News Archive](#)
[Events Calendar](#)
[University Relations](#)

[About UM](#) | [Accessibility](#) | [Administration](#) | [Contact UM](#) | [Directory](#) | [Employment](#) | [Safety](#) | [Privacy Policy](#) | [Campus Map](#)



A to Z

my.umt.edu

UM News

[UM](#) / [News](#) / [2016](#) / [August](#) / [UM Physical Therapy Clinic Offers Free Consultations for Students, Faculty, Staff](#)

UM Physical Therapy Clinic Offers Free Consultations for Students, Faculty, Staff

August 25, 2016

MISSOULA – The University of Montana Physical Therapy Clinic will offer free 20-minute consultations to UM students, faculty and staff during the first week of fall semester, Monday through Thursday, Aug. 29-Sept. 1.

Physical therapists at the clinic will answer questions about fitness and exercise and assess any pain or stiffness patients are feeling to determine if physical therapy could help.

Consultations will take place at the clinic, located in Skaggs Building Room 129, and at the Fitness and Recreation Center. Walk-ins are welcome, or appointments may be scheduled at the UMPT Clinic by calling 406-243-4006.

“We’re excited to welcome the UM community back to campus by offering free consultations next week,” said Susan Ostertag, director of the clinic. “Our physical therapists are here to help students, faculty and staff start the semester off right.”

###

Contact: UM Physical Therapy Clinic, 406-243-4006, .



University of Montana
32 Campus Drive
Missoula, MT 59812
Phone: (406) 243-2522
news@umontana.edu

Get Involved

[Submit a Calendar Event](#)
[Request a News Release](#)
[Suggest a Story Idea](#)

Quick Links

[News Archive](#)
[Events Calendar](#)
[University Relations](#)

[About UM](#) | [Accessibility](#) | [Administration](#) | [Contact UM](#) | [Directory](#) | [Employment](#) | [Safety](#) | [Privacy Policy](#) |
[Campus Map](#)

UM News

[UM](#) / [News](#) / [2016](#) / [August](#) / [Renowned Oceanographer Joins UM Flathead Lake Bio Station Faculty](#)

Renowned Oceanographer Joins UM Flathead Lake Bio Station Faculty

August 24, 2016

MISSOULA – Later this month, one of the nation’s preeminent oceanographers will join the faculty of the University of Montana’s Flathead Lake Biological Station.

FLBS recently hired Matthew Church as a microbial ecologist. He will leave his post at the University of Hawaii to begin his duties as an associate professor at the station at the end of August, adapting his work to Flathead Lake.

He will use his knowledge and experience studying microorganisms found in the ocean – the tiny life forms upon which the entire ecosystem depends – and apply that skillset to



studying Flathead Lake.

“He will bring to FLBS some of the most cutting-edge methods in aquatic microbial ecology,” FLBS Director Jim Elser said. “He will bring the ‘big science’ perspectives of ‘blue water’ oceanography to UM. Our landing Matt for FLBS has made a big splash in the worlds of oceanography and limnology.”

In studying the lake’s tiny microscopic community, Church will uncover a piece of the puzzle as to how the lake works.

“I try to use approaches that provide insight into how temporal and spatial changes in the aquatic habitats influence the distributions, physiology and diversity of microbes,” Church said.

FLBS Assistant Director Tom Bansak said Church’s research will fill a gap in the current understanding of the lake.

“Matt works routinely in some of the most technically challenging situations in the aquatic sciences – the ultra-dilute waters of the central Pacific Ocean,” Elser said. “His methods and perspectives will help keep FLBS research on the cutting edge in the aquatic sciences as he brings his considerable talents to the pure, clear waters of Flathead Lake.”

Church has conducted research in Antarctica and the subtropical North Pacific Ocean. In total, he has spent more than a year at sea working aboard research vessels in ocean ecosystems across the globe.

In 2004, he joined the Department of Oceanography at the University of Hawaii in large part to work with the scientists and staff of the Hawaii Ocean Time-series program. Since 1988, this interdisciplinary research program has sustained near-monthly observations of ecosystem variability at an open ocean site about 60 miles north of the Hawaiian Islands. He served as the lead principal investigator of this large interdisciplinary research program from 2009 to 2016.

In recognition of Church’s research and education contributions, he was awarded the Yentsch-Schindler Early Career Award by the Association for the Sciences of Limnology and Oceanography in 2015.

Church earned his bachelor’s degree from The Evergreen State College in 1994 and then worked for a few years at the Bermuda Biological Station for Research. He went on to earn master’s and doctoral degrees in marine science from the College of William and Mary’s School of Marine Science.

For more information call Bansak at 406-982-3301 ext. 229 or email tom.bansak@umontana.edu.

###

Contact: Tom Bansak, assistant director, Flathead Lake Biological Station, 406-982-3301 ext. 229, tom.bansak@umontana.edu.



University of Montana
32 Campus Drive
Missoula, MT 59812
Phone: (406) 243-2522
news@umontana.edu

Get Involved

[Submit a Calendar Event](#)
[Request a News Release](#)
[Suggest a Story Idea](#)

Quick Links

[News Archive](#)
[Events Calendar](#)
[University Relations](#)

[About UM](#) | [Accessibility](#) | [Administration](#) | [Contact UM](#) | [Directory](#) | [Employment](#) | [Safety](#) | [Privacy Policy](#) | [Campus Map](#)



A to Z

my.umt.edu

UM News

[UM](#) / [News](#) / [2016](#) / [August](#) / [UM Students, Researchers to Share Hands-on Learning at River City Roots Festival](#)

UM Students, Researchers to Share Hands-on Learning at River City Roots Festival

August 23, 2016

MISSOULA – Role models from the University of Montana’s We Are Montana in the Classroom initiative, the Department of Physics and Astronomy and the Department of Modern and Classical Languages and Literatures will share their love of learning and exploring from 10 a.m. to 5 p.m. Saturday, Aug. 27, at the River City Roots Family Fun Festival.

We Are Montana in the Classroom will host a booth in Caras Park. Alicia Gignoux, UM Spanish lecturer, will lead a Mola coloring activity in the morning. In the afternoon, undergraduate students Eric Dennison and DJ Wilkerson will share hands-on physics and astronomy science activities.

“We’re excited for We Are Montana in the Classroom to be a part of this wonderful community tradition and for children who visit the festival to have the opportunity to meet UM role models and engage in hands-on learning,” said Nathalie Wolfram, We Are Montana in the Classroom program manager.

Part of the Broader Impacts Group in the Office of Research and Creative Scholarship, We Are Montana in the Classroom partners with more than 100 UM faculty members, professionals and graduate students to inspire K-12 students about higher education and career pathways. During the past academic year, the initiative reached more than 10,000 students through statewide tours, local classroom visits and distance-learning experiences.

Admission to the festival is free. For a complete schedule of River City Roots Festival events, visit <http://www.rivercityrootsfestival.com/>.

For more information on booking a school visit or to learn more about We Are Montana in the Classroom's array of free programming, call Wolfram at 406-243-4828 or email nathalie.wolfram@umontana.edu.

###

Contact: Nathalie Wolfram, program manager, UM Broader Impacts Group, 406-370-7731, nathalie.wolfram@umontana.edu.



University of Montana
32 Campus Drive
Missoula, MT 59812
Phone: (406) 243-2522
news@umontana.edu

Get Involved

[Submit a Calendar Event](#)
[Request a News Release](#)
[Suggest a Story Idea](#)

Quick Links

[News Archive](#)
[Events Calendar](#)
[University Relations](#)



A to Z

my.umt.edu

UM News

[UM](#) / [News](#) / [2016](#) / [August](#) / [UM President to Deliver State of the University Address Aug. 26](#)

UM President to Deliver State of the University Address Aug. 26

August 22, 2016

MISSOULA – University of Montana President Royce C. Engstrom will kick off the academic year with his annual State of the University Address at 10 a.m. Friday, Aug. 26.

The public and members of the media are invited to the event, which will be held in the Montana Theatre of UM's Performing Arts and Radio/Television Center. The address also will be streamed live online at <http://www.mcat.org/#!/local-live/cchx>.

Also at the event, UM Interim Provost Beverly Edmond and the academic deans will introduce new faculty members and congratulate those who have earned promotion or tenure. Engstrom will welcome the University's new administrators.

###

Contact: Paula Short, director of communications, UM Office of the President, 406-243-2311, paula.short@mso.umt.edu.



University of Montana
32 Campus Drive
Missoula, MT 59812
Phone: (406) 243-2522
news@umontana.edu

Get Involved

[Submit a Calendar Event](#)
[Request a News Release](#)
[Suggest a Story Idea](#)

Quick Links

[News Archive](#)
[Events Calendar](#)
[University Relations](#)

[About UM](#) | [Accessibility](#) | [Administration](#) | [Contact UM](#) | [Directory](#) | [Employment](#) | [Safety](#) | [Privacy Policy](#) | [Campus Map](#)



A to Z

my.umt.edu

UM News

[UM](#) / [News](#) / [2016](#) / [August](#) / [UM Launches Third Wilderness Experience for Incoming Freshmen](#)

UM Launches Third Wilderness Experience for Incoming Freshmen

August 19, 2016

MISSOULA – “Leave the cell phones behind and welcome to your next adventure!” shouts one of the 19 student-leaders for this year’s Freshmen Wilderness Experience Program at the University of Montana.

On Aug. 19 UM welcomed its third and largest class of freshmen for FWE. Ninety-four students arrived to prepare for a four-day wilderness adventure as part of UM’s orientation program. The experience is open to all incoming freshmen at UM, and most participants have never camped before or been on a multiday wilderness trip.

Sponsored by the Wilderness Institute and the UM Outdoor Program, the program allows 10 groups of freshmen, each led by two trained student guides, to spend four days and three nights in various wilderness areas around the state, completing service projects and performing group- and community-oriented tasks.

“Being able to arrive on campus one day not knowing anyone, and then return four days later having bonded with strangers in a wilderness setting was an amazing way to integrate into the school community,” said Zoe Leake, a former FWE participant, who returned to the program for the past two years as a student-leader. “It gave me confidence to recognize faces during Orientation, and the trip itself instills a confidence as well, because you’re

completing physically strenuous tasks that challenge your body and your mind.”

Natalie Dawson, director of UM's Wilderness Institute, said they use former FWE students as the organizing staff for the event.

“Our dream was to make this a program for students, run by students, and it is finally starting to happen,” she said.

The Wilderness Institute, housed within the College of Forestry and Conservation, offers integrated, interdisciplinary and experiential wilderness education to UM students and wilderness stewards around the globe.

Dawson said FWE not only fosters a strong community of learning across UM, but also supports the University's continuing efforts to increase recruitment, provides mentorships with older students and fosters a strong sense of place that can be developed by spending time in the wild lands surrounding Missoula.

“FWE is a program that allows those of us with experience to share our passion of land conservation and recreation with the next generation of land stewards,” Leake said.

###

Contact: Natalie Dawson, UM Wilderness Institute director, 406-552-5550, natalie.dawson@umontana.edu; Rachel James, Wilderness Institute assistant director, 406-243-6916, rachel.james@umontana.edu; Elizabeth Fricke, Outdoor Program director, 406-396-5108, elizabeth.fricke@umontana.edu.



University of Montana
32 Campus Drive
Missoula, MT 59812
Phone: (406) 243-2522
news@umontana.edu

Get Involved

[Submit a Calendar Event](#)
[Request a News Release](#)
[Suggest a Story Idea](#)

Quick Links

[News Archive](#)
[Events Calendar](#)
[University Relations](#)

[About UM](#)

[Accessibility](#)

[Administration](#)

[Contact UM](#)

[Directory](#)

[Employment](#)

[Safety](#)

[Privacy Policy](#)

[Campus Map](#)



A to Z

my.umt.edu

UM News

[UM](#) / [News](#) / [2016](#) / [August](#) / [UM Offers First Certificate Program for Health Coaching in Montana](#)

UM Offers First Certificate Program for Health Coaching in Montana

August 19, 2016

MISSOULA – Curry Health Center at the University of Montana has partnered with UM's Department of Health and Human Performance to offer the first certificate program in the state for health coaching.

The Health Behavior Coach Certificate will be offered starting this fall.

Building on the success of the Optimal Bear health coaching program, now known as Health Coaching at Curry Health Center, the certificate program provides students with real-world experience to accompany their academic studies under guidance from both faculty and Curry Health Center professionals.

Students will complete courses taught by health and human performance Professors Annie Sondag and Laura Dybdal. In addition to classroom instruction, students in the program will log a minimum of 80 hours of face-to-face time with clients, ranging from UM students to community members seeking health coaching at medical offices in the Missoula area.

"Health coaching is a skill that takes time to build and understand," said Kayli Julius, health coach coordinator at

Curry Health Center. "It is not something you can learn by only reading a textbook or taking an online course."

The unique, real-world experience students gain with clients sets the program apart from others like it across the nation. Previous participants in the Health Coaching at Curry Health Center program have had success finding employment in the health care industry. Julius said the Health Behavior Coach Certificate will build on this success.

"My training and experience with Health Coaching at Curry Health Center made me realize my passion for health coaching and enabled me to pursue a career in it," said Grete Homer, 24, a 2014 UM community health graduate. "This is an excellent program that gives students a unique chance to be trained, gain experience and become marketable in the health coaching field."

Homer now works as a certified health education specialist at Montana Spine and Pain Center in Missoula.

"The certificate program provides UM students with a specific set of skills that not only enhance their prospect for gainful employment, but also have the potential to positively influence the health and well-being of people in our communities," Sondag said. "As our health care system expands its mission from one that focuses on treating people who are ill to a focus on keeping people healthy, health behavior coaches will be an integral part of the prevention team."

According to the Worldwide Survey of Fitness Trends conducted by the American College of Sports Medicine, health and wellness coaches are one of the largest growing job trends. The report reveals that health and wellness coaching has been in the top 20 trends since 2010 and jumped to No. 13 in the most recent survey.

"Health coaching is a blossoming field because we now know the science behind

effective behavior change," said Linda Green, director of wellness at Curry Health Center. "Coaching isn't about telling people what to change, it's about helping people reach their health goals."

Students interested in earning a Health Behavior Coach Certificate can call Sondag at 406-243-5215 or visit <http://umt.edu/beahealthcoach>. For more information on health coaching at Curry Health Center, students can call Curry Health Center Wellness at 406-243-6719 or email kayli.julius@mso.umt.edu.

###

Contact: Jessica Vizzutti, Curry Health Center media specialist, 406-243-6958, jessica.vizzutti@umontana.edu.

Get Involved

[Submit a Calendar Event](#)

[Request a News Release](#)

[Suggest a Story Idea](#)



University of Montana
32 Campus Drive
Missoula, MT 59812
Phone: (406) 243-2522
news@umontana.edu

Quick Links

[News Archive](#)

[Events Calendar](#)

[University Relations](#)

[About UM](#) | [Accessibility](#) | [Administration](#) | [Contact UM](#) | [Directory](#) | [Employment](#) | [Safety](#) | [Privacy Policy](#) | [Campus Map](#)



A to Z

my.umt.edu

UM News

[UM](#) / [News](#) / [2016](#) / [August](#) / [New UM Student-Produced 'Business: Made in Montana' to Premiere on MontanaPBS](#)

New UM Student-Produced 'Business: Made in Montana' to Premiere on MontanaPBS

August 18, 2016

MISSOULA – Another edition of the award-winning, University of Montana student-produced television program “Business: Made in Montana” is set to premiere across the state on MontanaPBS.

“Business: Made in Montana” profiles businesses that call Montana home, create interesting and unique products, hire Montana workers and keep the state’s economic engine rolling. The new program will premiere at 7 p.m. Thursday, Sept. 1, on MontanaPBS.

This episode introduces Coaster Pedicab in **Bonner**, Adipose Boatworks in **Helena**, McCollum Longboards in Missoula, Alpine Tipis in **Polson**, E.L.K. Inc. in **Gardiner** and Kochel Guitars in **Potomac**.

Coaster Pedicab in Bonner makes innovative transportation on wheels, making products to beat traffic and explore the city, while still being environmentally friendly. More information on the business is online at

<http://www.coasterpedicab.com>.

Helena's Adipose Boatworks looks to stand out from other fishing boat companies to get recreation enthusiasts on the river in style. The custom boat company has more information on its company available at

<http://adiposeboatworks.com>.

McCollum Custom Longboards owner Craig McCollum has turned his passion for both woodworking and longboarding into a business. No two of the Missoula-made custom longboards are alike.

The husband-and-wife team at Alpine Tipis in Polson have found that working together can lead to a successful and rewarding business. The business is online at <http://www.alpinetipis.com/>.

E.L.K. Inc. in Gardiner allows anyone to use the call of the wild. Their handmade calling equipment helps to bring in elk, deer and wolves anywhere in the world. More information is available at <http://www.elkinc.com>.

Potomac's Kochel Guitars embody Montana in quality and creativity. With instruments as unique as the man who makes them, Sean Kochel brings to life the past and present with his handmade products. Learn more online at <http://www.kochelguitars.com/>.

Students at the UM School of Journalism and Department of Radio-Television produced the program during spring semester 2016. Junior journalism student Mederios Whitworth-Babb from **Butte** hosts the program. During the past 23 years, "Business: Made in Montana" has featured more than 200 different businesses.

"Business: Made in Montana" is made possible with support from the Greater Montana Foundation. Founded by pioneer broadcaster Ed Craney in 1958, the GMF provides grants to improve the quality of communications of important issues through electronic media. More information is available online at <http://www.greatermontana.org>.

MontanaPBS comprises KUFM-TV in Missoula and KUSM-TV in Bozeman and is a service of UM and Montana State University. More information is online at <http://montanapbs.org>.

###

Contact: Ray Ekness, professor, UM School of Journalism, 406-243-4088, ray.ekness@umontana.edu.

Get Involved

[Submit a Calendar Event](#)

[Request a News Release](#)

[Suggest a Story Idea](#)

Quick Links



University of Montana
32 Campus Drive
Missoula, MT 59812
Phone: (406) 243-2522
news@umontana.edu

[News Archive](#)
[Events Calendar](#)
[University Relations](#)

[About UM](#) | [Accessibility](#) | [Administration](#) | [Contact UM](#) | [Directory](#) | [Employment](#) | [Safety](#) | [Privacy Policy](#) | [Campus Map](#)



A to Z

my.umt.edu

UM News

[UM](#) / [News](#) / [2016](#) / [August](#) / Groundbreaking UM Climate Change Research Topic of New Book

Groundbreaking UM Climate Change Research Topic of New Book

August 17, 2016

MISSOULA – The groundbreaking climate change adaptation research of University of Montana faculty member L. Scott Mills is the focus of a new book by acclaimed young-adult author Sneed Collard III.

The book, “Hopping Ahead of Climate Change – Snowshoe Hares, Science and Survival,” describes Mills’ 18 years of research on snowshoe hares, seasonal coat color change and the potential for animals to adapt to climate change. It is intended for ages 10 and older.

Mills began the research while a wildlife biology professor at UM from 1995 to 2013. In 2013, he was recruited to North Carolina State University as a chancellor’s faculty excellence hire to coordinate universitywide research in global environmental change and human well-being. Mills returned to UM on Aug. 1 to assume the role of associate vice president of research for global change and sustainability and to continue his research.

The research project by Mills’ team described in “Hopping Ahead of Climate Change” focuses on his studies of snowshoe hares and other species worldwide that change their coat colors to match the seasons.

Mills has found that the seasonal color molt is driven by day length, so shorter winters under climate change could make animals in their white winter coats on brown snowless ground be “mismatched” and more vulnerable to predators. However, Mills also points out that adaptation is possible under the right conditions, offering hope and guidance for the future.

In addition to his work on hares and seasonal coat color change, Mills also conducts research on tigers and other species in Bhutan, elephants in India, cougars and elk in Wyoming, and Arctic foxes in Sweden.

For more information about the book and its fall release, visit https://mountain-press.com/item_detail.php?item_key=710. For more information on Mills’ research or his return to UM, call him at 406-243-4151 or email scott.mills@umontana.edu.

###

Contact: Scott Mills, UM associate vice president of research for global change and sustainability, 406-243-4151, scott.mills@umontana.edu.



University of Montana
32 Campus Drive
Missoula, MT 59812
Phone: (406) 243-2522
news@umontana.edu

Get Involved

[Submit a Calendar Event](#)
[Request a News Release](#)
[Suggest a Story Idea](#)

Quick Links

[News Archive](#)
[Events Calendar](#)
[University Relations](#)

UM News

[UM](#) / [News](#) / [2016](#) / [August](#) / [UM Launches 'UMontana' Mobile App](#)

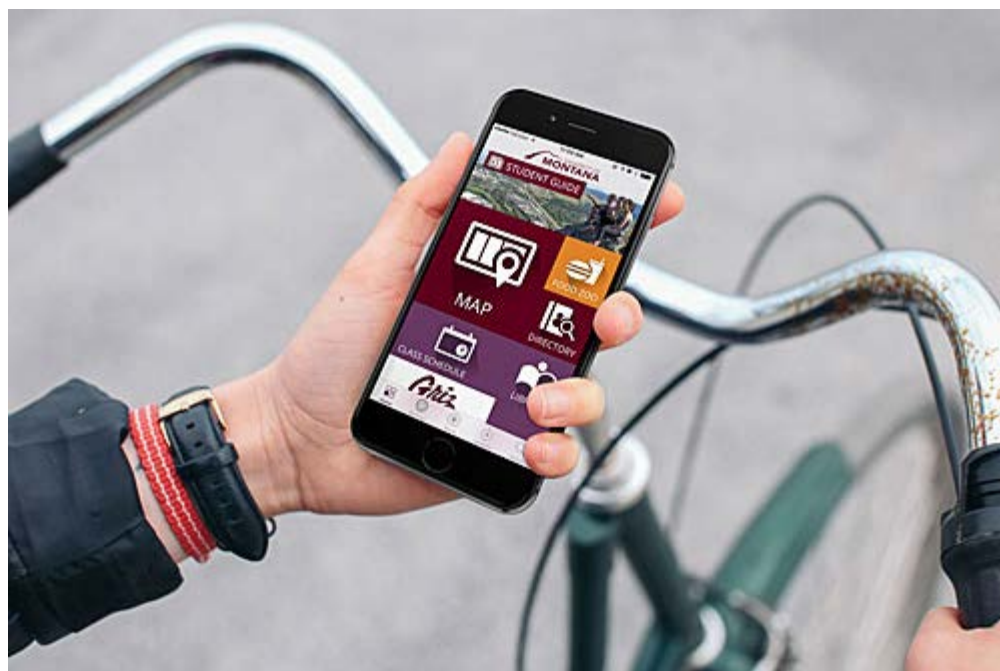
UM Launches 'UMontana' Mobile App

August 16, 2016

MISSOULA – The University of Montana released its first mobile app this week.

The app was designed in-house by UM's Information Technology department and offers users easy access to commonly searched for information, integration with UM academic tools and the ability to conduct University business from your phone, tablet or a web browser.

Application functions include a listing of available degrees and majors offered at UM, hours of



operation for various campus facilities, a listing of current campus events, access to library services, an interactive campus map, a listing of student groups, the daily Food Zoo menu and the UDash bus schedule.

Users will see personalized content by identifying themselves as a visitor, alum, student or prospective student. For example, students can access their class schedules and grades through the app.

It can be downloaded for free from the Google Play store or the Apple iTunes App Store by searching for University of Montana.

The app was built in response to the changing nature of student connectivity, and the number of features available in the app will increase over time.

"The reality is that more and more people are using mobile these days," said Mario Schulzke, UM's chief marketing officer. "That's how we get directions. That's how we find information and increasingly that's how we're looking to complete transactions. As a University, we're aware of that shift in consumer behavior, and we built – and will continue to build – this platform to better serve our students and their needs."

UM's IT department aims to add additional functionality – such as giving the campus community access to CyberBear, which students use to access to their accounts – and access to Moodle, which is a classroom portal. They will continuously develop and improve the app in order to better serve students' needs.

"We won't be able to tackle all the problems at once, but our goal is to launch an app that delivers immediate value and then build from there," Schulzke said.

For more information or to download, visit <https://www.umt.edu/mobile/>.

###

Contact: Cary Shimek, University Relations communications manager, 406-243-5914,
cary.shimek@umontana.edu.



Get Involved

[Submit a Calendar Event](#)
[Request a News Release](#)
[Suggest a Story Idea](#)

Quick Links

[News Archive](#)
[Events Calendar](#)
[University Relations](#)

University of Montana
32 Campus Drive
Missoula, MT 59812
Phone: (406) 243-2522
news@umontana.edu

[About UM](#) | [Accessibility](#) | [Administration](#) | [Contact UM](#) | [Directory](#) | [Employment](#) | [Safety](#) | [Privacy Policy](#) |
[Campus Map](#)



A to Z

my.umt.edu

UM News

[UM](#) / [News](#) / [2016](#) / [August](#) / [UM Launches Statewide Adaptive Bike, Recreation Initiative](#)

UM Launches Statewide Adaptive Bike, Recreation Initiative

August 16, 2016

DILLON – Montanans living with disabilities will have access to adaptive cycles through a new statewide initiative spearheaded by the University of Montana. The Wheels Across Montana program will host its second state regional Adaptive Bike Clinic from 2 to 5 p.m. Friday, Aug. 19, at the Southwest Family YMCA in **Dillon**.

UM's Rural Institute for Inclusive Communities recently received a \$75,000 High Impact Innovative Assistive Technology grant from the Dana and Christopher Reeve Foundation to make the project possible.

Adaptive trikes were delivered to **Dillion, Missoula, Billings** and **Fort Peck**, and each community hosted or will host events to deliver adaptive recreation equipment to encourage physical activity among people of all ages with paralysis, disabilities and chronic diseases who face additional health and social barriers due to living in rural areas.

"This grant will offer greater independence to individuals living with paralysis and provide our community with services that truly enhance all our lives," said Mindy Renfro, principal investigator with UM's Rural Institute for Inclusive Communities.

In each region two local organizations – one with recreation experience and one with health care experience serving people with disabilities – will partner to store equipment and lead safe, fun and inclusive community programs. Health care partners will promote the programs to patients and clients with disabilities and, when needed, individualize programs to the specific needs of participants. In Dillon, local partners include the Southwestern Family YMCA and Barrett Hospital.

“Limited funding with great need has limited our store of recreational equipment,” Renfro said. “Most people with disabilities report that the cost of recreational assistive technology is prohibitive to their participation with their families and communities for recreational and outdoor sporting events.”

The Reeve Foundation grant funding will immediately remove these barriers to many Montanans in four major areas of the state.

“In addition, we know that people living with disabilities experience a much higher prevalence of chronic disease, falls and depression than their peers and that promoting physical activity and social engagement is key to prevention,” Renfro said.

The Reeve Foundation is dedicated to curing spinal cord injury by funding innovative research, and improving the quality of life for people living with paralysis through grants, information and advocacy. For more information visit <https://www.christopherreeve.org/about-us> or email Rita Gentles, manager of marketing and communications, at rgentles@christopherreeve.org.

UM’s Rural Institute improves the quality of life for people with disabilities in rural communities, their families and service providers. For more information visit <http://ruralinstitute.umt.edu/> or call 406-243-5467. For information specific to the Wheels Across Montana project, call Renfro at 406-243-2841.

###

Contact: Mindy Renfro, principal investigator, UM Rural Institute for Inclusive Communities, 406-243-2841, mindy.renfro@umontana.edu.



Get Involved

[Submit a Calendar Event](#)
[Request a News Release](#)
[Suggest a Story Idea](#)

Quick Links

[News Archive](#)
[Events Calendar](#)
[University Relations](#)

University of Montana
32 Campus Drive
Missoula, MT 59812
Phone: (406) 243-2522
news@umontana.edu

[About UM](#) | [Accessibility](#) | [Administration](#) | [Contact UM](#) | [Directory](#) | [Employment](#) | [Safety](#) | [Privacy Policy](#) |
[Campus Map](#)



A to Z

my.umt.edu

UM News

[UM](#) / [News](#) / [2016](#) / [August](#) / Teachers Now Can Earn International Baccalaureate Certification at UM

Teachers Now Can Earn International Baccalaureate Certification at UM

August 15, 2016

MISSOULA – The new International Baccalaureate Educator certificate program at the University of Montana has received unanimous, unconditional recognition and approval from the International Baccalaureate Organization.

The IB Educator Certificate, which is housed in UM's Department of Teaching & Learning, is a professional certificate that complements students' academic qualifications and provides them with the initial requirements to teach in a school that has been authorized to provide IB programs.

IB programs prepare students – from elementary to the high school level – for higher education learning. The certificate program equips teachers to instruct IB curriculum, which adheres to more rigorous academic standards and ensures that students receive an education that encourages independent student-lead learning, cultural and linguistic awareness, and thorough preparation for higher education.

The required courses for this unique certificate program include content focused on foundations and principles of IB programs, teaching and learning in IB programs, and assessment and measurement practices for international education. The only one of its kind in the region, and only one of a handful of IBO-university partnerships in the

U.S., this certificate program has significant implications for global education on a state, national and global scale.

Under the direction of UM Assistant Professor Lucila Rudge, Montana IB practitioners will co-teach the courses along with UM faculty.

“Collaborating with IB teachers has been a very rich and rewarding experience,” Rudge said. “Their knowledge of IB content and practice is an invaluable asset for this program.”

The IB program of study includes a sequence of three graduate-level courses that begin during summer sessions and continue throughout the academic year. These courses can be completed as a stand-alone program or applied toward a master’s or doctoral degree program. The course of study is designed to ensure in-depth knowledge and understanding of IB content, principles and practices and is open to teachers across the U.S. and around the world. Distance students will join the class synchronously via web-conferencing.

“This is an exciting opportunity for teachers regionally and around the world,” said Adrea Lawrence, associate professor and department chair in the UM Department of Teaching & Learning. “The IB Certificate in Teaching and Learning will provide teachers a foundation in inquiry-based learning and assessment.”

To learn more about the IB Certificate program at UM, visit

<http://coehs.umt.edu/departments/currinst/International%20Baccalaureate%20/default.php>, email Rudge at lucila.rudge@mso.umt.edu or call 406-243-5415.

###

Contact: Peter Knox, communications manager, UM Phyllis J. Washington College of Education and Human Sciences, 406-243-4911, peter.knox@mso.umt.edu.



University of Montana
32 Campus Drive
Missoula, MT 59812
Phone: (406) 243-2522
news@umontana.edu

Get Involved

[Submit a Calendar Event](#)
[Request a News Release](#)
[Suggest a Story Idea](#)

Quick Links

[News Archive](#)
[Events Calendar](#)
[University Relations](#)

[About UM](#) | [Accessibility](#) | [Administration](#) | [Contact UM](#) | [Directory](#) | [Employment](#) | [Safety](#) | [Privacy Policy](#) | [Campus Map](#)



A to Z

my.umt.edu

UM News

[UM](#) / [News](#) / [2016](#) / [August](#)

/ [Another Record Year for University of Montana Foundation: Three-Year Fundraising Tops \\$150M, Including \\$51M for Scholarships](#)

Another Record Year for University of Montana Foundation: Three-Year Fundraising Tops \$150M, Including \$51M for Scholarships

August 11, 2016

MISSOULA – For the third year in a row, giving to the University of Montana has topped \$50 million. At the close of fiscal year 2016, private support totaled \$53.67 million, just edging out the previous fundraising record set in fiscal year 2014, which was \$53.66 million.

“People believe in UM and in its future – you can see this by their continued support,” said Shane Giese, president and CEO of the University of Montana Foundation. “We hope this news will motivate and inspire continued giving to our great University.”

Gifts came from all sectors – individuals, foundations and corporations – and included cash, pledges, estate commitments and private grants. Donors supported a variety of areas, including scholarships, campus facilities, and faculty and student research.

Numerous large gifts of over \$25,000 boosted total dollars raised, as did private grants. UM received \$11.3 million from private foundations and corporations this year, nearly doubling the amount raised in that area in FY2015.

Three consecutive years above \$50 million has helped the UM Foundation exceed a goal set in 2013, when the organization launched the Investing in Student Success Initiative. Through the initiative, the Foundation set out to raise \$45 million for scholarships and fellowships, dynamic learning environments and program enrichment. Thanks to sustained support from committed donors, the organization has exceeded that fundraising goal by 37 percent, raising a total of \$62 million. The \$45 million goal was met a year early, at the end of FY2015.

The majority of donations toward the Investing in Student Success Initiative – \$51 million – were directed to student scholarships and fellowships. Thanks to increased funding in this area, the Foundation has been able to provide more support directly to students. In academic year 2012-13, the year before the initiative launched, the Foundation distributed a total of \$3.16 million in scholarship funding to campus – 2,011 scholarships to 1,597 students. For the coming academic year (2016-17), the Foundation will distribute an estimated \$5.2 million in scholarships and fellowships, providing 2,648 scholarships to 2,054 students. That means roughly 15 percent of the student body, encompassing the UM mountain campus and Missoula College, will receive a privately funded scholarship.

Hanna Ziegler is one of those who benefited from a scholarship last year.

“Receiving the James Crumley Memorial Scholarship was one of the greatest compliments I have ever received,” said the senior creative writing major. “Students are nominated and awarded by the faculty in the English department, and being selected by my faculty over countless others was a huge confidence booster.”

Scholarships also have a broader impact on the University, as enhanced financial aid packages are important for student retention and recruitment.

“Making a university education affordable is one of our top priorities,” said Thomas Crady, UM vice president for enrollment and student affairs. “Nothing is more important to ensure access.”

UM’s record-setting year is in line with national trends in philanthropy. The Giving Institute at Indiana University Lilly Family School of Philanthropy reports that 2015 was America’s most generous year ever, with private donations nationwide topping \$373 billion.

###

Contact: Kate Stober, UM Foundation, 406-243-2627, kate.stober@mso.umt.edu; Rachel Brumfield, UM Foundation, 406-243-5691, rachel.brumfield@mso.umt.edu.



University of Montana
32 Campus Drive
Missoula, MT 59812
Phone: (406) 243-2522
news@umontana.edu

Get Involved

[Submit a Calendar Event](#)
[Request a News Release](#)
[Suggest a Story Idea](#)

Quick Links

[News Archive](#)
[Events Calendar](#)
[University Relations](#)

[About UM](#) | [Accessibility](#) | [Administration](#) | [Contact UM](#) | [Directory](#) | [Employment](#) | [Safety](#) | [Privacy Policy](#) | [Campus Map](#)



A to Z

my.umt.edu

UM News

[UM](#) / [News](#) / [2016](#) / [August](#) / [UM Student Researchers to Share Hands-on Learning at Western Montana Fair](#)

UM Student Researchers to Share Hands-on Learning at Western Montana Fair

August 09, 2016

MISSOULA – Role models from the University of Montana’s We Are Montana in the Classroom initiative and the Department of Physics and Astronomy will share their love of learning and exploring with fairgoers from 2 to 5 p.m. Thursday, Aug. 11, during Kids’ Day at the Western Montana Fair.

UM physics students will share hands-on science activities at the Stomping Grounds, the fair’s designated family area. The Stomping Grounds will feature activities, demonstrations and performances for children and families throughout the fair, which runs Aug. 9-14 at the Missoula County Fairgrounds

On Thursday, UM physics students Eric Dennison and Chris Totzauer will serve as role models at We Are Montana in the Classroom’s booth, leading activities and sharing their experiences as students and researchers at UM.

“We’re so excited to partner with the Western Montana Fair to bring hands-on learning and role-model engagement to this event, which is a highlight for so many children and families in our community,” said Nathalie Wolfram, We Are Montana in the Classroom program manager.

Kids' Day at the fair will offer children under age 17 free gate admission until 6 p.m. on Thursday. Regular gate admission is \$6 for adults, \$4 for senior citizens and free for those with a military ID.

Part of the Broader Impacts Group in UM's Office of Research and Creative Scholarship, We Are Montana in the Classroom partners with more than 100 UM faculty members, professionals and graduate students to inspire K-12 students about higher education and career pathways. Last academic year, the initiative reached over 10,000 students through statewide tours, local classroom visits and distance-learning experiences.

For more information on booking a school visit or to learn more about We Are Montana in the Classroom's array of free programming, call Wolfram at 406-243-4828 or email nathalie.wolfram@umontana.edu.

Contact: Nathalie Wolfram, program manager, UM Broader Impacts Group, 406-370-7731, nathalie.wolfram@umontana.edu.



University of Montana
32 Campus Drive
Missoula, MT 59812
Phone: (406) 243-2522
news@umontana.edu

Get Involved

[Submit a Calendar Event](#)
[Request a News Release](#)
[Suggest a Story Idea](#)

Quick Links

[News Archive](#)
[Events Calendar](#)
[University Relations](#)



A to Z

my.umt.edu

UM News

[UM](#) / [News](#) / [2016](#) / [August](#) / Sociology Professor from Ethiopian University to Speak at UM

Sociology Professor from Ethiopian University to Speak at UM

August 05, 2016

MISSOULA – Professor Molalign Belay Adugna of the University of Gondar in Gondar City, Ethiopia, will visit the University of Montana this month to work toward developing an exchange program between UM and UG.

Adugna will give a presentation on opportunities for faculty and student exchanges and collaboration between the universities at 1:30 p.m. Wednesday, Aug. 10, in Social Science Building Room 338. The event is free and open to the public.

Adugna is a lecturer in the Sociology Department and director of the Alumni Relations and Partnership Office of the University of Gondar. He is also a trustee of the Yenage Tesfa Orphan and Street Children Organization in Gondar City. He is the recipient of the 2016 Mandela Washington Fellowship for emerging young African leaders. As part of the fellowship, he has been in the U.S. for six weeks of leadership training, culminating in a summit in Washington, D.C., including a town hall meeting with President Barack Obama.

###

Contact: Dan Doyle, professor, UM Department of Sociology, 406-243-5912, dan.doyle@umontana.edu.



University of Montana
32 Campus Drive
Missoula, MT 59812
Phone: (406) 243-2522
news@umontana.edu

Get Involved

[Submit a Calendar Event](#)
[Request a News Release](#)
[Suggest a Story Idea](#)

Quick Links

[News Archive](#)
[Events Calendar](#)
[University Relations](#)



A to Z

my.umt.edu

UM News

[UM](#) / [News](#) / [2016](#) / [August](#) / Brand New to Perform at UM Oct. 27

Brand New to Perform at UM Oct. 27

August 04, 2016

MISSOULA – Brand New and supporting artists The Front Bottoms and Modern Baseball will rock the University of Montana Adams Center on Thursday, Oct. 27.

The announcement comes following Brand New's co-headlining summer tour with Modest Mouse, which featured both bands playing full headlining sets to sold-out crowds across the country. Most notable for the Long Island, New York, band was closing the show at a sold-out Madison Square Garden in New York City.

Tickets go on sale at noon Friday, Aug. 5, at the Adams Center Box Office, all GrizTix outlets, online at <http://www.griztix.com> or by phone at 406-243-4051. Tickets cost \$29.50 for seats in the risers and \$32.50 for general admission floor, plus applicable fees.

In July, Brand New released a vinyl trio via their label, Procrastinate! Music Traitors. The releases included 2015's lone single "Mene" backed with the first and only release of "Out of Range." The band's most recent single, "I am a Nightmare," was named "Best New Track" by Pitchfork, an online music magazine. The single, along with three reworked demos, were included in the band's July release. The three records will be available through the label's traveling record store during the Missoula concert stop.

For more information, including Brand New's full tour dates, visit <http://www.fightoffyourdemons.com>.

For local concert information, call UM Productions Marketing Coordinator Chanelle Paakkonen at 406-243-4719 or email marketing@umproductions.org.

###

Contact: Chanelle Paakkonen, marketing coordinator, UM Productions, 406-243-4719, marketing@umproductions.org.



University of Montana
32 Campus Drive
Missoula, MT 59812
Phone: (406) 243-2522
news@umontana.edu

Get Involved

[Submit a Calendar Event](#)
[Request a News Release](#)
[Suggest a Story Idea](#)

Quick Links

[News Archive](#)
[Events Calendar](#)
[University Relations](#)



A to Z

my.umt.edu

UM News

[UM](#) / [News](#) / [2016](#) / [August](#) / [UM Alum to Advise Montana Manufacturers in New Role](#)

UM Alum to Advise Montana Manufacturers in New Role

August 04, 2016

MISSOULA – A University of Montana alumnus has joined the staff of Montana State University’s Montana Manufacturing Extension Center as the new business adviser.

In his new role, Michael Manhardt will advise the west-central Montana region, including Missoula, where he will have an office with UM’s Bureau of Business and Economic Research.

“BBER is a great partner to MMEC, and Michael is a great addition to our organization,” said Paddy Fleming, MMEC director. “We look forward to impressive results from Michael’s work with the manufacturers of Missoula and west-central Montana.”

Manhardt holds a bachelor’s degree in mechanical engineering from the University of Wisconsin-Madison and a Master of Business Administration from UM. His previous experience includes serving as a powertrain development engineer at Waukesha Engine, a powertrain design and development engineer at Harley-Davidson, the motorcycle design program manager at Polaris Industries and the hard goods design manager at Sun Mountain Sports.

In addition, Manhardt owned two businesses in Missoula: Helix3D, a manufacturer of 3-D printers, and Acuity Design, a product design firm specializing in industrial design and fabrication.

Founded in 1996 and based in the MSU College of Engineering, MMEC provides hands-on assistance to Montana manufacturers in the areas of growth, innovation and profit enhancement. BBER, founded in 1948 and based at UM School of Business Administration, produces research and information on the Montana economy, including annual economic forecasts for manufacturing in Montana.

“Hosting MMEC has proven to be a perfect fit for both our organizations,” said Patrick Barkey, director of BBER.

Established in 1948, BBER is the main research unit of UM’s School of Business Administration. It informs Montanans about the economic climate in which they live and work. In addition to conducting its Economic Outlook Seminars across the state each year, BBER researchers engage in a wide range of applied research projects that address different aspects of the state economy, including survey research, economic analysis, health care research, forecasting, wood products research and energy research.

For more information about BBER, visit <http://www.bber.umt.edu/> or call 406-243-5113.

###

Contact: Patrick Barkey, UM Bureau of Business and Economic Research director, 406-243-5113, pat.barkey@business.umt.edu; Michael Manhardt, Montana Manufacturing Extension Center business adviser, 406-218-9910, michael.manhardt@montana.edu.



University of Montana
32 Campus Drive
Missoula, MT 59812
Phone: (406) 243-2522
news@umontana.edu

Get Involved

[Submit a Calendar Event](#)
[Request a News Release](#)
[Suggest a Story Idea](#)

Quick Links

[News Archive](#)
[Events Calendar](#)
[University Relations](#)

[About UM](#) | [Accessibility](#) | [Administration](#) | [Contact UM](#) | [Directory](#) | [Employment](#) | [Safety](#) | [Privacy Policy](#) | [Campus Map](#)



A to Z

my.umt.edu

UM News

[UM](#) / [News](#) / [2016](#) / [August](#) / [UM Offers New Sexual Assault Response, Prevention Certificate Program](#)

UM Offers New Sexual Assault Response, Prevention Certificate Program

August 04, 2016

MISSOULA – This August, the University of Montana and the Rocky Mountain Justice Institute will offer an inaugural five-day course aimed at providing an overview of the issues surrounding sexual assault, best practices in responding and promising prevention practices. This innovative certificate program, which currently does not exist anywhere else in the nation, will be held Monday through Friday, Aug. 15-19, on the UM campus. It aims to change the sexual assault dialogue.

According to the U.S. Centers for Disease Control, sexual violence is a significant public health problem in the United States. In order to stop it from occurring, the CDC recommends comprehensive prevention strategies addressing factors at each of the levels that influence sexual violence: individual, relationship, community and society.

“Sexual assault is an endemic problem that we must address as a community,” said Kimberly Dudik, co-founder of the Rocky Mountain Justice Institute and state representative. “With one in five women and one in 71 men being sexually assaulted in their lifetimes, and the myriad personal and community problems these assaults cause, we must identify how to properly respond to and ultimately prevent sexual assaults. This class is a step forward to

reaching this goal.”

Sexual assault is a widespread problem requiring new and innovative approaches in prevention and response. This new course, one of four certificate programs to be offered by the Rocky Mountain Justice Institute related to social justice, addresses a growing issue and sought-after area of study. The primary goal is to provide expert education on how to prevent sexual violence and how to appropriately respond as a member of a law enforcement, justice or education community.

Brooke Marshall, director of the Montana Safe Schools Center at the Phyllis J. Washington College of Education and Human Sciences, and co-founder of the Rocky Mountain Justice Institute, said the course was designed with the intention of continuing to move this conversation forward in Missoula, and across the state of Montana.

“Our desire is to build upon the work that has been done by University officials, faculty and staff, along with campus and local enforcement agencies, the county attorney’s office, and many others, to be a model for other campuses and communities in the area of sexual assault response and prevention,” Marshall said.

This unique training has approved graduate credits from UM, as well as professional continuing educational credits (CLE, CEU, OPI and POST). Two university credits have been approved. This class is appropriate for attorneys, social workers, counselors, educators, law enforcement, administrators, community advocates and the campus and general community.

To register visit <https://www.eventbrite.com/e/sexual-assault-response-and-prevention-certificate-program-tickets-26474454807>, email Marshall at brooke.marshall@mso.umt.edu or call Marshall at 406-243-5764.

###

Contact: Peter Knox, communications manager, Phyllis J. Washington College of Education and Human Sciences, 406-243-4911, peter.knox@mso.umt.edu; Brooke Marshall, director, Montana Safe Schools Center, 406-317-2750, brooke.marshall@mso.umt.edu.



University of Montana

Get Involved

[Submit a Calendar Event](#)
[Request a News Release](#)
[Suggest a Story Idea](#)

Quick Links

[News Archive](#)
[Events Calendar](#)
[University Relations](#)

32 Campus Drive
Missoula, MT 59812
Phone: (406) 243-2522
news@umontana.edu

[About UM](#) | [Accessibility](#) | [Administration](#) | [Contact UM](#) | [Directory](#) | [Employment](#) | [Safety](#) | [Privacy Policy](#) |
[Campus Map](#)



A to Z

my.umt.edu

UM News

[UM](#) / [News](#) / [2016](#) / [August](#) / Register Now for UM Blackstone LaunchPad's New Entrepreneurial Conference

Register Now for UM Blackstone LaunchPad's New Entrepreneurial Conference

August 03, 2016

MISSOULA – The University of Montana's entrepreneurial incubator Blackstone LaunchPad invites all who seek inspiration to attend the inaugural Last Best Conference to help pursue their passions.

The conference will be held Thursday and Friday, Aug. 25-26, at The Wilma, Missoula's historic theater, with additional activities all across town.

Akin to events like SXSW and World Domination Summit, the conference will feature nationally renowned speakers including Missoula native John Stone, head of innovation and commercialization at Samsung; Mark Roberge, HubSpot chief revenue officer; Ariel Adkins, Twitter art and culture liaison; and Lu Setnicka, former human resources director at Patagonia.

Between keynote speakers, conference attendees will attend participant-driven breakout sessions and social events

designed to spark networking and community building. The Last Best Conference is designed and organized by a statewide team of volunteers who are passionate about supporting an innovative Montana full of creative dreamers and thinkers.

"The values of the conference are creativity, courage and community," said Morgan Slemberger, marketing and operations manager at UM's Blackstone LaunchPad. "We focused on these values because we want all community members of the Mountain West to have a place to come together and take a step toward living a passionate life."

The structure of the Last Best Conference differentiates itself through participant-driven breakout sessions in between keynote addresses. These sessions, held in various locations throughout Missoula, are designed to feel like an impromptu discussion amongst colleagues rather than a formal presentation.

"The breakout sessions are an opportunity to build community and that is a huge goal of this event," Slemberger said. "We are creating experiences throughout the event to encourage participants to engage with each other and the city of Missoula by hosting the event in conjunction with Downtown ToNight and the River City Roots Festival."

Prior to the two-day conference, additional innovative learning opportunities called "LBCon Academies" will be held at UM. Academy topics range from starting a business to using creativity to change an organization and the world. For a full academy listing, visit <http://www.lastbestconference.com/academies/>.

Tickets for the conference cost \$199, which includes all main-stage sessions, conference swag and a drink token for Thursday's cocktail party at The Wilma. Tickets are available online at <http://thewilma.com/event/last-best-conference-1067/>. Academies cost \$29 per session. In addition, participants may choose to register for a two-day boot camp on Tuesday and Wednesday led by global accelerator program Seed Spot, which costs \$450.

"The Kauffman Foundation ranks Montana as No. 1 in the nation for startup activity, so we want to keep that momentum going with events like Last Best Conference and encourage those independent thinkers and creators to start something incredible here," Slemberger said.

Blackstone LaunchPad at UM is a co-curricular, experiential campus program designed to introduce entrepreneurship as a viable career path and develop entrepreneurial skills and mindsets through individualized coaching, ideation and venture creation support. Learn more at <https://www.umt.edu/launchpad/>.

###

Contact: Morgan Slemberger, UM Blackstone LaunchPad marketing and operations manager, 406-243-5723, morgan.slemberger@umontana.edu.

Get Involved

[Submit a Calendar Event](#)



University of Montana
32 Campus Drive
Missoula, MT 59812
Phone: (406) 243-2522
news@umontana.edu

[Request a News Release](#)
[Suggest a Story Idea](#)

Quick Links

[News Archive](#)
[Events Calendar](#)
[University Relations](#)

[About UM](#) | [Accessibility](#) | [Administration](#) | [Contact UM](#) | [Directory](#) | [Employment](#) | [Safety](#) | [Privacy Policy](#) | [Campus Map](#)

UM News

[UM](#) / [News](#) / [2016](#) / [August](#) / [UM Hires New Broadcast Media Center Director](#)

UM Hires New Broadcast Media Center Director

August 03, 2016

MISSOULA – After a national search, the University of Montana has selected Ray Ekness to become the next director of the Broadcast Media Center, which houses the public broadcasting stations of KUFM Radio and KUFM-TV.

Ekness is a UM School of Journalism professor and former department chair of the Department of Radio-Television. He will start his new director duties Aug. 22.



“Ray has the talent, personality and work ethic to help guide the Broadcast Media Center through an evolving public media landscape,” said Mario Schulzke, UM chief marketing officer who oversees the

center. “He also expressed a Montana-centric vision for programming that we found exciting, and we expect his unique background to increase ties between the Broadcast Media Center and our journalism school.”

Ekness will replace William Marcus, who retired as director last year after a 40-year career in Montana public broadcasting, and Linda Talbott, the center’s associate director for development, communication and development who served as interim director for more than a year.

Ekness worked a few radio jobs in his native North Dakota and worked on-air at KUFM as a UM student in 1982. He then launched a career as a commercial producer and newscast director at television stations in Montana and Idaho.

Starting in 1989, he was a producer and director at the Broadcast Media Center for 11 years – working as an adjunct at the journalism school during that time – and he joined the J-school full time in 2000. He rose up through the ranks, chairing the radio-TV department for six years, and he currently serves as school’s director of student success.

Ekness has helped produce many MontanaPBS programs, including the popular “Backroads of Montana.” Other programs he produced include “Remembering the Columbia Gardens,” “To Helena and Back: the First Special Service Force,” “Building Bridges: Back to Ireland” and “War of the Worlds.”

“I’m humbled to have the chance to lead the Broadcast Media Center,” Ekness said. “I look forward to working hard with an outstanding staff to produce programs that our viewers and listeners will love and support.”

KUFM Radio and KUFM-TV are Corporation for Public Broadcasting-qualified stations offered as a public service by UM. Montana Public Radio is an NPR affiliate, with news teams in Missoula, the Flathead Valley and Helena. The cooperative public television operation – KUFM-TV in Missoula and KUSM-TV in Bozeman – comprise MontanaPBS, the statewide television network that serves nearly every Montana household in 400 communities.

###

Contact: Cary Shimek, search committee chair, University Relations communication manager, 406-243-5914, cary.shimek@umontana.edu.

Get Involved

[Submit a Calendar Event](#)
[Request a News Release](#)
[Suggest a Story Idea](#)

Quick Links

[News Archive](#)



University of Montana
32 Campus Drive
Missoula, MT 59812
Phone: (406) 243-2522
news@umontana.edu

[Events Calendar](#)
[University Relations](#)

[About UM](#) | [Accessibility](#) | [Administration](#) | [Contact UM](#) | [Directory](#) | [Employment](#) | [Safety](#) | [Privacy Policy](#) | [Campus Map](#)



A to Z

my.umt.edu

UM News

[UM](#) / [News](#) / [2016](#) / [August](#) / 2016 Annual Economic Update Addresses Competition for Talent in Montana

2016 Annual Economic Update Addresses Competition for Talent in Montana

August 03, 2016

MISSOULA – The University of Montana’s Bureau of Business and Economic Research will take the 11th annual Economic Update Series on the road to Billings, Bozeman, Helena, Butte, Great Falls and Missoula Tuesday through Thursday, Aug. 9-11. The series opened in Kalispell on July 29.

According to BBER, one shared challenge among businesses across Montana is finding and retaining a high-quality workforce. With improving economic conditions, changing technology and turnover or retirement of owners, managers and workers at all levels, Montana companies and organizations must attract and retain the talent they need to compete and thrive. Will those challenges become easier or harder in the years ahead? How can companies meet those challenges? The 2016 Economic Update series will focus on this timely and important workforce issue.

BBER Director Pat Barkey will share the latest intelligence and projections of where the state and regional economies are headed, with a particular eye on the labor market. Barkey will be joined by Kate McGoldrick, the executive director of UM’s new enterprise and executive development efforts, who will share her insights on why the challenge of attracting talent is so important, and what companies can do to address it.

The Economic Update Series is sponsored by the Montana Chamber of Commerce. Each event runs approximately 1.5 hours and includes breakfast at the morning seminars and lunch at the afternoon seminars. Registration costs \$30 for Montana Chamber of Commerce members and \$35 for nonmembers. To register for the Economic Update series, visit the Chamber's website at <http://www.montanachamber.com> or call 406-442-2405.

The Economic Update schedule is:

- **7 a.m. Tuesday, Aug. 9:** Billings, Crowne Plaza.
- **Noon Tuesday, Aug. 9:** Bozeman, Holiday Inn.
- **8 a.m. Wednesday, Aug. 10:** Helena, Radisson Colonial Hotel.
- **Noon Wednesday, Aug.10:** Butte, NorthWestern Energy.
- **7 a.m. Thursday, Aug. 11:** Great Falls, Hilton Garden Inn.
- **Noon Thursday, Aug. 11:** Missoula, Hilton Garden Inn.

Established in 1948, BBER is the main research unit of UM's School of Business Administration. It informs Montanans about the economic climate in which they live and work. In addition to conducting its Economic Outlook Seminars across the state each year, BBER researchers engage in a wide range of applied research projects that address different aspects of the state economy, including survey research, economic analysis, health care research, forecasting, wood products research and energy research.

BBER also has provided full range of survey services for more than 35 years. Highly skilled bureau researchers use advanced data collection systems and techniques to offer broad-based survey services for public- and private-sector studies, including survey development, data collection, analysis and report writing.

For more information visit BBER at <http://www.bber.umt.edu/> or call 406-243-5113.

###

Contact: Pat Barkey, director, UM Bureau of Business and Economic Research, 406-243-5113, pat.barkey@business.umt.edu.



Get Involved

- [Submit a Calendar Event](#)
- [Request a News Release](#)
- [Suggest a Story Idea](#)

Quick Links

- [News Archive](#)
- [Events Calendar](#)

University of Montana
32 Campus Drive
Missoula, MT 59812
Phone: (406) 243-2522
news@umontana.edu

[University Relations](#)

[About UM](#) | [Accessibility](#) | [Administration](#) | [Contact UM](#) | [Directory](#) | [Employment](#) | [Safety](#) | [Privacy Policy](#) | [Campus Map](#)



A to Z

my.umt.edu

UM News

[UM](#) / [News](#) / [2016](#) / [August](#) / [UM Biomolecular Center Earns \\$10.5 Million Grant](#)

UM Biomolecular Center Earns \$10.5 Million Grant

August 02, 2016

MISSOULA – A research center at the University of Montana recently was awarded \$10.5 million from the National Institutes of Health.

The major, five-year award will augment UM's Center for Biomolecular Structure and Dynamics, which works to unravel the molecular foundations of biological processes in health and disease. The funding is a Phase II NIH Center of Biomedical Research Excellence (COBRE) award.

"Earning this award is a major success for our faculty," said Stephen Sprang, the center director and a UM biology professor. "I want to thank everyone who helped us by proposing outstanding science, building productive core facilities and organizing vibrant activities."

He said the award will provide up to three years of research funding to four faculty investigators: Kasper Hansen, Celine Beamer and Philippe Diaz in the Department of Biomedical and Pharmaceutical Sciences (BMED), and Dong Wang in the Department of Chemistry and Biochemistry. It also will fund research programs of BMED's Travis Hughes and Andrea Stierle.

The COBRE award also will support:

- The BioSpectroscopy Research Laboratory directed by Sandy Ross and managed by Chelle Terwilliger.
- The Molecular Computational Core directed by Nicholas Natale and managed by Dave Holley.
- The Protein Expression and X-ray Diffraction Core operated by Tung-Chung Mou.
- Small-molecule X-ray diffraction services provided by Orion Berryman.
- The nuclear magnetic resonance and mass spectrometry core facilities managed in part by Earle Adams.

“Importantly, this funding will provide substantial startup funding for up to two new faculty hires,” Sprang said. “This will fulfill critical research and teaching needs in three basic and biomedical science-oriented UM departments. Our initial Phase I funding allowed us to hire five outstanding faculty members who already have done great things here at UM, and we expect similar results from the new additions.”

He said the funding also will support the Center for Biomolecular Structure and Dynamics administrative core, which provides pre- and post-grant award service and counseling to the UM researchers who so far have been awarded about \$15 million in funding from grants submitted through the center.

Funding also will continue support for the center’s seminar sponsorships, a research symposium, a summer graduate fellowship program and semi-annual grant workshops.

“This COBRE II award provides another excellent boost to our vibrant and growing research enterprise here at UM,” said Scott Whittenburg, UM vice president for research and creative scholarship. “The award demonstrates the NIH’s recognition of the leadership Dr. Sprang provided for the previous COBRE I award and the accomplishments of the faculty who were supported by that grant. I have full confidence that the faculty on this award will achieve even greater scientific accomplishments.”

###

Contact: Stephen Sprang, UM Center for Biomolecular Structure and Dynamics, 406-243-6028, stephen.sprang@umontana.edu.



Get Involved

- [Submit a Calendar Event](#)
- [Request a News Release](#)
- [Suggest a Story Idea](#)

Quick Links

- [News Archive](#)
- [Events Calendar](#)

[University Relations](#)

University of Montana
32 Campus Drive
Missoula, MT 59812
Phone: (406) 243-2522
news@umontana.edu

[About UM](#) | [Accessibility](#) | [Administration](#) | [Contact UM](#) | [Directory](#) | [Employment](#) | [Safety](#) | [Privacy Policy](#) |
[Campus Map](#)



A to Z

my.umt.edu

UM News

[UM](#) / [News](#) / [2016](#) / [August](#) / Forensic Science Expert to Deliver Keynote Lecture at Medicolegal Death Conference

Forensic Science Expert to Deliver Keynote Lecture at Medicolegal Death Conference

August 02, 2016

MISSOULA – Henry C. Lee, one of the world’s foremost forensic scientists, will deliver a keynote address from 5:30 to 8:30 p.m. Thursday, Aug. 11, during a dinner event at the University of Montana as part of the 2016 Montana Medicolegal Death Investigation Conference.

Lee has worked with law enforcement agencies in helping to solve more than 6,000 cases. His testimony figured prominently during the O.J. Simpson trial and he assisted police during the investigation of the JonBenet Ramsey murder in Colorado. In recent years, Lee’s work has taken him to England, Bosnia, China, Brunei and other locations around the world.

Lee’s lecture is open to the public and may be attended by those who are not registered for the full conference. Tickets to the keynote cost \$50, or \$75 for two. Students with a valid ID may purchase tickets for \$35. The event takes place in the University Center Ballroom and includes dinner, a lecture by Lee and a book signing. Tickets can

be purchased online at <http://www.umt.edu/sell/cps/mdi/> or by calling 406-243-4623.

Registration is still open for the 2016 Montana Medicolegal Death Investigation Conference, which will be held Wednesday through Friday, Aug. 10-12, on the third floor of the UC. The conference is hosted by UM's School of Extended and Lifelong Learning.

The target audience for the conference is coroners, medical examiners, death investigators and other police and public safety officers, forensic scientists, physicians, nurses, emergency medical technicians and others involved with the investigation of violent, suspicious or unexpected deaths.

To register online or learn more about the conference, visit <http://www.umt.edu/sell/cps/mdi/>.

###

Contact: Ginger Claussen, conference and events manager, UM School of Extended and Lifelong Learning, 406-243-2047, ginger.claussen@umontana.edu.



University of Montana
32 Campus Drive
Missoula, MT 59812
Phone: (406) 243-2522
news@umontana.edu

Get Involved

[Submit a Calendar Event](#)
[Request a News Release](#)
[Suggest a Story Idea](#)

Quick Links

[News Archive](#)
[Events Calendar](#)
[University Relations](#)



A to Z

my.umt.edu

UM News

[UM](#) / [News](#) / [2016](#) / [August](#)

/ [UM Research: Mountain Environments More Vulnerable to Climate Change than Previously Reported](#)

UM Research: Mountain Environments More Vulnerable to Climate Change than Previously Reported

August 01, 2016

MISSOULA – New research by University of Montana forest landscape ecology Professor Solomon Dobrowski shows that organisms will face more hardships as they relocate when climate change makes their current homes uninhabitable.

Dobrowski and co-author Sean Parks – a scientist at the U.S. Department of Agriculture, Forest Service Aldo Leopold Research Institute and a UM alumnus – propose a new method to model how fast and where organisms will need to move to keep pace with climate change.

Mountains support roughly a quarter of the globe's terrestrial biodiversity, contain about a third of its protected areas and house nearly half of the world's biodiversity hotspots. One reason for this biodiversity is that complex topography within mountains creates diverse climates within close proximity to one another.

One way scientists measure how vulnerable a site is to climate change is to estimate how far organisms at that site need to move to maintain a consistent temperature as the Earth warms. The diversity of climates in mountain landscapes means that when temperatures rise, organisms might have to only move a short distance to get to a cooler home.

However, Dobrowski and Parks show that measuring the distance from one area of suitable climate to the next doesn't account for the resistance organisms will encounter as they traverse areas with very different climates, like a warm valley between two mountain peaks.

"It's not enough to just measure how far an organism will have to move in order to keep up with climate change," Dobrowski said. "We also need to look at how much organisms will be exposed to dissimilar climates along the way. Once we do that, we find that even short movements in mountainous areas expose organisms to large climate differences. This may prevent plants and animals from being able to maintain a suitable climate as the earth warms."

Dobrowski and Parks suggest that areas within mountains are more climatically isolated and thus more vulnerable to climate change than previously reported.

Their paper "Climate change velocity underestimates climate change exposure in mountainous regions" was published Aug. 1 in Nature Communications. It is available online at

<http://www.nature.com/ncomms/2016/160801/ncomms12349/full/ncomms12349.html>.

Contact: Solomon Dobrowski, associate professor of forest landscape ecology, 406-243-6068, [406-243-6068](tel:406-243-6068).



University of Montana
32 Campus Drive
Missoula, MT 59812
Phone: (406) 243-2522
news@umontana.edu

Get Involved

[Submit a Calendar Event](#)
[Request a News Release](#)
[Suggest a Story Idea](#)

Quick Links

[News Archive](#)
[Events Calendar](#)
[University Relations](#)

[About UM](#)

[Accessibility](#)

[Administration](#)

[Contact UM](#)

[Directory](#)

[Employment](#)

[Safety](#)

[Privacy Policy](#)

[Campus Map](#)