

University of Montana

## ScholarWorks at University of Montana

---

Montana Kaimin, 1898-present

Associated Students of the University of  
Montana (ASUM)

---

10-21-1938

### The Montana Kaimin, October 21, 1938

Associated Students of Montana State University

Follow this and additional works at: <https://scholarworks.umt.edu/studentnewspaper>

**Let us know how access to this document benefits you.**

---

#### Recommended Citation

Associated Students of Montana State University, "The Montana Kaimin, October 21, 1938" (1938).

*Montana Kaimin, 1898-present*. 1660.

<https://scholarworks.umt.edu/studentnewspaper/1660>

This Newspaper is brought to you for free and open access by the Associated Students of the University of Montana (ASUM) at ScholarWorks at University of Montana. It has been accepted for inclusion in Montana Kaimin, 1898-present by an authorized administrator of ScholarWorks at University of Montana. For more information, please contact [scholarworks@mso.umt.edu](mailto:scholarworks@mso.umt.edu).

# THE MONTANA KAIMIN

MONTANA STATE UNIVERSITY, MISSOULA, MONTANA

Z400

FRIDAY, OCTOBER 21, 1938. VOLUME XXXVIII. No. 9

## International Relations Club Sends Delegates to Meeting

President of Local Organization Acting as Chairman  
Of Committee on Economic Readjustment;  
Group Will Return Sunday

A delegation of seven members of International Relations club and Mr. and Mrs. Guy Fox left from Butte Thursday to attend the regional conference of International Relations club to be held in Provo, Utah.

Members of the delegation are Walter Coombs, Missoula, president of the local chapter; Bill Scott, Great Falls; Dorothy Bangs, Inverness; Rachel Gitchel, Pendroy; James Besancon, Missoula; Josephine Maury, Butte; John Carver, Missoula, alumnus of Brigham Young University, and Mr. and Mrs. Guy Fox, Missoula.

Walter Coombs is the chairman of the committee on Economic Readjustments for World Peace. Other topics will be the Far Eastern Crises, the Question of Minorities and International Co-operation.

Other states sending delegations are Colorado, Nevada, Utah, Washington and Oregon.

Montana's delegation will be housed at Brigham Young university. They will return home late Sunday.

## Grizzly Unit Shows Gain In Officers

Nineteen more students than last year are taking advanced ROTC making an all-time course high of 60 men, according to figures released today by the Department of Military Science. The basic courses show a decrease of 11 men under last year.

A four-year comparative enrollment report shows that 689 students registered for the basic and advanced courses this year, 681 last year, 690 in 1936-37, and 664 in 1935-36.

Enrollment in the advanced course has increased from 30 in 1935-36 to 60 this year. The year 1936-37 had an enrollment of 29 and in 1937-38 the enrollment was 41.

This year's enrollment of 629 in the basic course is the low one during the four-year period. In 1935-36, 63 were in the basic course. The high year was 1936-37, when 661 were enrolled. Last year 640 were in the basic course.

## State Catholics Receive Copies Of Club Paper

The Founding, Newman Foundation publication, was mailed to Montana Catholics during the week.

Issued for the purpose of publicizing the Foundation, the paper will be printed four times a year under the supervision of a committee made up of Newman club members.

The board of trustees of the Foundation corporation will meet within the next month to discuss plans for a temporary house for Father Frank J. Burns, new chaplain.

A circular letter will be sent soon as a follow-up to the Founding. James McMahon, McCabe, Foundation chairman, said today, "Few contributions have been received recently, although Carroll college, Helena, sent a \$50 check Monday."

## Spaulding Is Offered Iowa University Job

Kenneth Spaulding, '36, has been offered an assistantship in English in the University of Iowa, where he taught on a fellowship last year. He will keep his present job in the Three Forks high school, however. Spaulding, who received his B. A. degree in English from Montana State university in 1936 and his M. A. degree in 1937, is the son of Dean Thomas C. Spaulding of the forestry school.

## Council Elects LeRoy Purvis New President

LeRoy Purvis, Great Falls, was elected president of Student-Faculty council at a meeting of the organization Tuesday night. Other new officers are Faith Embrey, Great Falls, vice-president, and Ellen Mountain, Shelby, secretary. All were unanimously chosen.

Helen Hyder, Phillipsburg; Eileen McHugh, Malta, and Creswell Pigot, Roundup, were elected as members of the steering committee which is headed by the vice-president of the council. The committee is making plans for future meetings.

The council reviewed problems and discussions of past meetings. The list of members to the council was revised and provision made for the appointment of members from organizations who have no representatives at the present time.

The next Student-Faculty council meeting will be November 1.

## Art Gallery Has Greene's Exhibit

LeRoy Greene's water-color exhibit has been attended by enthusiastic audiences since its opening last Saturday, announced Professor George Yphantis.

The university Fine Arts department and the Missoula Woman's club sponsor the exhibit jointly. The gallery of the Fine Arts building, where the display is located, will be open from 2 to 6 o'clock Saturday and Sunday. Admission is free.

Greene showed some of his work in the all-states' exhibition in New York City this summer. Two years ago several of his paintings and etchings were exhibited here. Greene's home is in Billings.

## Forest Class Will Inspect Park Camps

Thirty-five members of the forest recreation class under Professor F. G. Clark of the School of Forestry will start a week-end field trip to Glacier park tomorrow. The students will undertake a first-hand survey of recreational problems in public camps and playgrounds.

Plans are that the trip will be made in two of the forestry school trucks. The party will carry its own food and bedding and will go to the park by way of Seeley lake. Arriving at the park a member of the Glacier Park Forest Service will explain the park organization and its policy in handling large crowds of pleasure seekers.

The objective of the Logan pass trip, Professor Clark said, is to show the students an illustration of building construction merged into landscape. One example is a large stone building on the pass, the coloring of which blends inconspicuously into the surrounding scene. The aim of this type of construction is to prevent distraction from the natural beauties of the area.

A number of examples of roadside beautification will be pointed out to the students.

The recreational class of the school plans another trip sometime in November. This trip will be up Rock creek to the Morrison cave in Jefferson county. A stop will be made at Thompson park, nine miles south of Butte.

The aim of this trip is to show first-hand the development of a national scenic wonder into a public playground. Examples and lectures on the proper method of handling people at these natural playgrounds will be given to the students.

The class in forest recreation is composed of juniors in the forestry school. Prior to this year enrollment in the class was restricted to seniors eligible for the annual field trip in the spring. The new arrangement creates a preparatory schedule for the juniors which increases the value of the field trip in their final year, forestry officials state.

## Group Begins New Revision Of By-Laws

Pantzer, Pease, Williams,  
Shaw and Milburn  
Are Chosen

Revision of the ASMSU constitution, which has been pending for the last several years, will get under way immediately, John Hanrahan, Miles City, ASMSU president, announced yesterday.

Central board has appointed an advisory committee to investigate the constitution. Stan Shaw, Missoula; Bob Pantzer, Livingston; Felicitia Pease, Butte; Betty Jane Milburn, Fort Leavenworth, Kansas, and Doug Williams, Butte, are members of this committee. Legal adviser is Edwin W. Briggs, assistant professor of law.

The advisory committee will meet once a week throughout the year and give the constitution a thorough going-over, investigating technicalities and making changes which seem necessary or beneficial. Culmination of the committee's work will probably not be until the latter part of spring quarter, when it will report its findings and changes to Central board. If these are judged satisfactory by the board, the revised constitution will be brought up for approval by the students at convocation.

Hanrahan and Central board believe that revision will clear up many technicalities, remove out-moded sections and generally make more workable the old constitution, which has proved hampering in many ways.

## Haydon Selects November 17, 18 For Fall Major

Appointments to Production Staff  
Name Bartley and Hopkins  
Stage Managers

"Stage Door" is scheduled for production November 17 and 18, Larrae Haydon, director of dramatics, announced today. Production staff, including appointment of department heads and listing of technical assistants, was completed Wednesday.

Staff positions were assigned to experienced Masquers, including five members of Masquers Royale. Masquer President Bill Bartley, Great Falls, and Vice-President Don Hopkins, Whitefish, will be general stage managers. Tom Hood, Absarokee, will serve as master electrician. Bob Warren, Glendive, as technical director, will take charge of scenery. Art Director Agnes S. R. Flint, Missoula, plans remodeling the department for more efficient work.

Mary Helen Dratz, Missoula, has been appointed wardrobe mistress and will costume the 32 characters. Business Manager Edna Holding, Missoula, started work last week compiling a mailing list for the theater association. Bob Warren will supervise publicity. Script girl and call work was assigned to Mary Jane Hotvedt, Saco, stage manager.

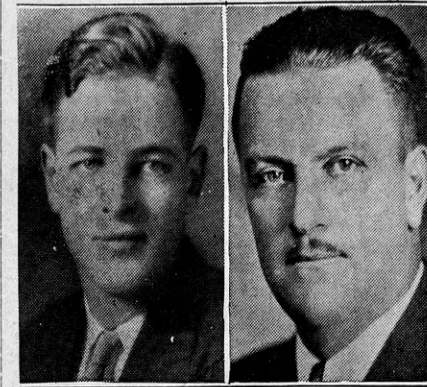
The technical department has two scene technicians, Bill Bartley and Everton Conger, Missoula, and two scenery artists, Mary Rose Chapellu, Belfry, and Betty Parker, Livingston. Harold Hanson, Missoula, and Peg Hayes, Missoula, have been appointed to handle properties. Kay Kitten-dorff, Missoula, will head the makeup department and Lela Woodgerd, Missoula, completes the list of staff appointees as house manager.

## Club's Annual Dinner Set for November 19

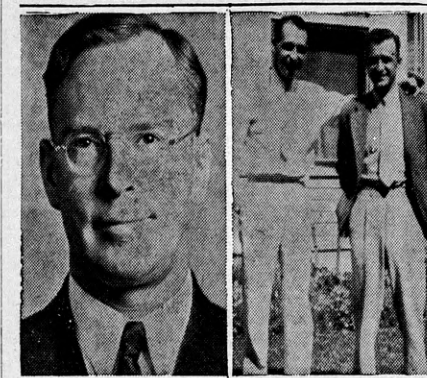
Faculty women's club annual dinner honoring new faculty members will be November 19, Mrs. George Finlay Simmons, president, said yesterday.

Mrs. Russell Smith, Mrs. William Bateman and Mrs. Douglas Fessenden have been appointed on the programs and decoration committee.

## Booster Spearheads



LEONARD MARSH Polson  
CONRAD O. ORE Dillon



E. M. PAT KEELEY Deer Lodge  
ARCHIE and BUD GROVER Deer Lodge

These five Montana State university supporters will head Grizzly booster clubs from three western Montana cities to the Homecoming October 28-29. Sixteen Montana cities, all represented by booster organizations, have made advance plans for attendance at the Grizzly-Idaho Vandals clash on Dornblaser October 29. A full calendar of events has been planned for the Homecoming. Culmination of the two-day celebration will be the crowning of the Grizzly Queen at Homecoming ball.

## Honorary Selects Advisers; Adopts 3-Year Rotation Plan

Mortar Board Names Armsby, Smith, Platt to Serve  
With President Simmons, Dean Ferguson  
Under Revised System

Mortar board has selected for its new advisers Mrs. DeLoss Smith, Mrs. Lucille Armsby and Miss Anne Platt. They serve with the permanent advisers, President George Finlay Simmons and Dean Mary Elrod Ferguson, Eunice Fleming, president, announced.

A system of rotating advisers has been started, Miss Fleming said, in which each adviser serves for three years, a new one being chosen each year. Mrs. Armsby will advise Mortar board for the next three years, Mrs. Smith two, and Miss Platt this year.

The entire group met with Mortar board members Wednesday night at a social meeting. Miss Catherine White, former adviser, was present.

Mary Elizabeth Sandford will be in charge of the sale of chrysanthemums at the Homecoming game, sponsored by Mortar board.

## Music School Will Present Staff Recital

The faculty of the School of Music will present a recital in the Student Union auditorium at 4 o'clock Sunday. Dean DeLoss Smith, Professors John Crowder, Florence Marion Smith and A. H. Weisberg and Instructors Clarence Bell, Marguerite Hood and Bernice B. Ramskill will take part.

The program will open with three organ numbers, "Chorus Magnus," by Dubois; "Twilight Moth," by Clokey, and "Second Toccata in C Minor," by James H. Rogers, played by Mrs. Florence Smith. Professor Weisberg will play a violin solo, Second Movement from "Fourth Concerto in D," by Mozart. Mrs. Ramskill will accompany him at the piano.

Dean Smith, baritone, will sing "She Never Told Her Love," by Haydn; "The Monotone," by Cor-

## Homecoming Preparations Are Gathering Momentum

Parade and Rally Planned, Queen Candidates Named;  
Managers' Club Schedules Victory Ball;  
Visitors Will See New Halls

Preparations for Homecoming are gathering momentum as October 29 nears, with a parade and rally planned, candidates for Grizzly queen selected, a ball scheduled by Managers' club, inspection of new halls, plans made by fraternities and sororities for entertainment of visitors and the celebration featured in the Montana State University News Bulletin, quarterly paper issued to Montana State university graduates.

## Skit, Musical Novelty Are Mixer Features

Skitters sponsored a matinee mixer Thursday with entertainment consisting of a skit, "Byrd Life," and a musical novelty, "Stop Beating Around the Mulberry Bush." Beryl Hester directed the skit.

Characters were Valerie Lapeyre, Mrs. Byrd; Warren Lemp, Jonas, and Gene Payne, Mr. Byrd. The musical number was arranged by Dean Brown, accompanist, and sung by Grace Wrigley, Evelyn McKee and Ruth Heidel.

## Death Takes Mrs. Elrod; Illness Brief

Mrs. Morton J. Elrod, mother of Dean Mary Elrod Ferguson, died yesterday morning at a local hospital after a brief illness.

The prominent Missoula resident was born in Corydon, Iowa, and received her education in Iowa schools. She was married 50 years ago to Dr. Elrod and in 1897 came to Missoula where Dr. Elrod was one of the first members of the faculty of the university and chairman of the Department of Biological Science. Four years ago ill health forced his retirement from active work.

Mrs. Elrod was keenly interested in the young school and contributed much to its early development. A prominent personality in club activities, Mrs. Elrod was a charter member of the Missoula Woman's club and a member for 40 years of the As You Like It club. She was a member of the Methodist church.

Besides her husband and Dean Ferguson, Mrs. Elrod is survived by a sister, Mrs. Charles Martendale of Hot Springs, who has been in Missoula several days, and a cousin, William G. Hartshorn of Danville, Ill., who will arrive today.

Funeral arrangements have not been announced.

## Forestry Club Plans to Enter Float in Parade

Forestry club decided to enter a float in the Homecoming parade as the result of a meeting Wednesday night. Other features of the meeting were the group's plans for skiing this winter, the showing of educational films and the initiation of new members.

The forestry float is in charge of Homer Benson, who will select his own committee. Foresters plan to use the school's two trucks.

The club will repair an old prospector's cabin in the Lubrecht forest for members of the group's skiing organization. Foresters will put windows and a stove in the building and plan to build double-deck bunks for overnight trips.

Elmer P. Bloom of the United States Forest Service showed club members a movie demonstrating modern methods of forest fire fighting.

New members of Forestry club hiked up Mount Sentinel as part of their initiation to write their names on a white pine plaque. An upperclassman had been previously detailed to keep a fire going beside the plaque for the guidance of the initiates. The roll of new members will hang in the forestry school library.

A record crowd of 10,000 is expected for the Idaho game, according to Pete Murphy, Stevensville, student chairman of the affair. Bleachers will be entirely painted and cleaned. Card stunts by students and a special program during the half will provide color at the game.

All organizations, schools and clubs on the campus are urged by Charles Miller, Anaconda, parade chairman, to prepare and enter floats in the pre-game parade on Saturday.

Traditions board, under Chairman Stan Shaw, will begin its activities with an SOS Thursday night as a curtain-raiser to Friday night's rally.

"Funeral March" Friday At 7:20 Friday night the student body will gather at the Northern Pacific depot to start a combined funeral-and-victory parade featuring the Idaho Jinx. "It will be a funeral march for Idaho, illustrating the retreat to Moscow," Shaw said yesterday, "and a victory march for the Grizzlies."

The Jinx, carried in a coffin by marchers, will end his journey at the bonfire where students will dispose of his remains by cremation.

The rally will continue after the march to a downtown theater where students will attend a special program at reduced prices. The program will include the Grizzly pep band, the yell leaders, several new speakers and a skit by Walt Millar.

"In order for us to get tickets for the performance at a reduced price," said Shaw, "it will be necessary for students to purchase them through student representatives at fraternity houses or at the Student Union."

Shaw Expresses Appreciation Shaw added that he had high hopes for a good rally Friday. "On behalf of Traditions board," he concluded, "I would like to express our appreciation of the excellent co-operation given by the student body at the last two rallies. If we keep up that spirit we can have the largest and best Homecoming in history."

Feature of Saturday night will be Homecoming ball, sponsored by Managers' club, at which President George Finlay Simmons will crown the Grizzly Queen, who will be elected by those attending the dance. Hal Hunt's 13-piece orchestra will provide music and entertainment and the Grizzly Queen will also be presented with a cup from a local theater and a pendant from Managers' club.

Grizzly Queen Candidates Sorority nominees for Grizzly Queen are Helen Faulkner, Missoula, Alpha Chi Omega; Jane Selkirk, Columbus, Alpha Delta Pi; Patty Hutchinson, Great Falls, Alpha Phi; Sally Hopkins, Paradise, Delta Delta Delta; Helen Holmway, Butte, Delta Gamma; Margaret Love, Miles City, Kappa Alpha Theta; Virginia Doecker, Butte, Kappa Delta; Annabelle Hartwig, Dillon, Kappa Kappa Gamma; Jean Knapp, Wilsall, Sigma Kappa, and Mary Rose Chapellu, Independent.

Grizzly Queen last year was Virginia Flanagan, Great Falls, Kappa Alpha Theta.

## Press Club Features Visual Education Play

Press club saw four short films Wednesday night as a part of the journalism school's visual education plan begun this year.

The pictures, "The Movies' Greatest Headlines," "The Bombing of the Pango," "Walter Damrosch—Music Appreciation" and "Hawaii," stressed background information.

## NOTICE

Student convocations committee will meet in the Eloise Knowles room at 4 o'clock today.



# The Montana Kaimin

Published semi-weekly during the school year by the Associated Students of Montana State University

REPRESENTED FOR NATIONAL ADVERTISING BY  
**National Advertising Service, Inc.**  
College Publishers Representative  
420 MADISON AVE. NEW YORK, N.Y.  
CHICAGO - BOSTON - LOS ANGELES - SAN FRANCISCO

Entered as second-class matter at Missoula, Montana, under act of Congress, March 3, 1879

Subscription price \$2.50 per year

Printed by the School of Journalism Press

55

BILL FORBIS Editor  
PHIL PAYNE Associate Editor  
DAN FINDELL Business Manager

### New Safety For Airlines

Collective precaution may bring a new era to civil aviation.

When winter weather conditions become unfavorable for flying we have grown accustomed to reading about air disasters, taking them more or less for granted and condemning the airplane generally.

This winter, however, may bring a change for the better, and if the change does come, the Civil Aeronautics Authority, new governmental air branch, will be largely responsible.

The new authority, demanding that something be done about air fatalities, has banded the country's airlines together to form an agreement covering flying operations.

Among other things the airlines have agreed that rival lines will cancel scheduled runs if the dispatcher on any one line decides the weather conditions are not favorable to safe flying, that cruising speeds under normal conditions will become maximum speeds during the winter months, thus giving a plane reserve power under stress, and that minimum flying conditions will be defined by an aeronautics committee.

### Japan Gets an Imperialistic Bellyful

Talk of a general European war has in the past two or three weeks pushed the Asiatic conflict entirely off the front page but hasn't stopped the war. While Herr Hitler was recklessly waving his crack army in Chamberlain's face, thousands of yellow soldiers along the Yangtze engaged in grim battle for possession of Hankow, China's inland industrial center. Each day the lists of dead go into thousands, the wounded into tens of thousands. Day after day Japan has been closing in, capturing position after position.

But strangely enough, the Japanese, although winning all major battles, are in grave danger of losing the war. General Chiang Kai-Shek is defending the temporary Chinese capital with an estimated force of 1,000,000 men as against an attacking force of but 200,000 men. Thus, military experts figure Japan might overextend herself, leaving her wide open to a vicious Chinese flank attack.

Also, the Japanese are having troubles at home. Already the streets of Tokyo, Kobe, Yokohama are filled with war cripples, the war is vastly unpopular, the national debt has reached \$6,000,000,000 and the gold reserve is rapidly melting.

Can Japan straddle the huge Chinese dragon? She controls only the garrisons and railroad lines. The vast stretches between are overrun with Chinese guerrilla armies, in contact with Communist headquarters at Yenan and the Nationalist government at Hankow. Even the peasants are supplied with guns.

After the capture of Hankow, which seems imminent, Japan will ignore Chiang, and make peace with puppet regimes. She has had her imperialistic bellyful of chasing China's wily generalissimo.

### Turkey Comes of Age

Recently the world has seen another potent and powerful nation take its place with the important countries of the Mediterranean.

This country, dominated for 500 years by the despotic and slowly crumbling Ottoman

dynasty and falling apart at the close of the World war, was suddenly rejuvenated through the seemingly magical ability of one man. The country is the Turkish Republic; the man, Mustafa Kemal Atatürk, its president and dictator.

Atatürk distinguished himself during the war as the successful defender of Dardanelles strait where he dealt the British several costly defeats. Atatürk and his Nationals in 1920 through the medium of the Grand National assembly declared Mohammed VI deposed as sultan and seized the governmental reins of Turkey.

Since that time nearly every traditional habit and custom of the Turks has been remodeled along European lines or scrapped for a modern one. The fez, long-time headgear of the Turks, was ordered abolished in favor of more modern European headwear; hand-shaking was introduced to take the place of the ancient salaam; women were forbidden to wear veils and were given suffrage rights with men; Arab and Persian words were eliminated and their Turkish equivalents substituted; Sunday was made the day of rest in place of Friday, the Mohammedan Sabbath. Many other reforms were introduced to make the Turkish state modern and eliminate the vestiges of Islamic domination.

But more important was Atatürk's five-year industrial plan introduced in 1934. The plan called for the construction of 15 factories at an expense of \$32,000,000, hydraulic electrification and exploitation of coal, copper and oil deposits.

The capital city, Ankara, has been transformed from a squalid dirty town of huts into a beautiful governmental seat. The cost of this cleanup was \$100,000,000.

Thus an ancient nation, modernized through the efforts of a low-born soldier and his progressive Young Turk organization, is making its bid for recognition in world circles. Turkey is definitely a key nation in the Near East, controlling through the straits of the Bosphorus and the Dardanelles the southern ports of Russia in the Black sea.

The spirited bidding between Germany and England for Turkey's favor with a much-interested Russia on the sidelines proves Turkey is rising fast among the powers of the world. England, attempting to keep Turkey as her ally, raised her ante from a \$30,000,000 to a \$60,000,000 loan and Germany lately allowed frozen Turkish assets in her country to be traded up in the heavy steel products of the Krupp plants.

Mustafa Kemal Atatürk is as ruthless a dictator as his compatriots Hitler, Stalin and Mussolini; every one of his European reforms he has forced on the Turks at the point of the bayonet. Opposition to his plans meant death. Behind him always are his fanatical Young Turks and with their strength he has welded and forged a decrepit, defeated and crumbling state into a respectable world power.

### Montana's Noontime Dash

Scene: Montana State university campus. Time: Noon, any school day. Characters: Automobile and flivver owners. Place: The campus speedway (University avenue).

The clock in Main hall tower bongs twelve. The mad dash for the automobiles begins. Students pour out of classes and pile into the vehicles. Drivers pull sharply out of their parking places, tear around the oval and hit the straightaway on University.

The race for lunch is on—although it won't be served for 15 minutes.

At 12:05 the students arrive at their fraternity houses or homes, flop in a chair or pace the floor and wonder when lunch will be ready.

Traffic regulations have been violated, pedestrians have jumped speedily to avoid injury in that lunchtime dash. The close-calls at intersections are something to tell the boys about. (Didn't that old duck have a queer look on his pan?)

Not all students make those mad dashes. But too many do. Luck doesn't hold forever. Now is the time to start slowing down. Make the "speedway" a "safeway".

### Student Groups In Social Work Are Increased

The field work program in social administration, offering experience to seniors in the Department of Economics and Sociology, has expanded to include 20 members. The increase in the number of student workers has necessitated dividing the group into two sections, family case work and community recreation, and group programs and social leadership.

The family case work group is supervised by Miss Ethel Reardon, supervisor of family case work and secretary of the Missoula Family Welfare agency. Each member of

this group is receiving experience as a worker for the family welfare agency.

The community recreation, group programs and social leadership groups are supervised by Dr. Harold Tascher in co-operation with agency supervisors. Social administration projects of local agencies, whether on or off the campus, are defined and administered by the student as far as possible. Class conferences are twice each week for the purpose of defining policy and checking results.

At present there are the following projects: Campus Congress, Skitlers, Campus club service, Student Union projects, Parent education, Nursery school project, recreation for adults, YWCA recreation for adults, arts and crafts for children from 4 to 8 years old, Missoula recreation projects, Red Cross roll call under the direction of students and the local Red Cross, and Social research, an NYA project.

**Los Angeles Company Gets Sentinel Contract**

The engraving contract for the 1939 Sentinel has been let to the Commercial Art & Engraving company of Los Angeles, Editor Charles Mueller, Deer Lodge, announced yesterday.

Mueller requests that the names of officers of all clubs and honoraries be turned in at the business office this week.

Meet your friends at the Rx Ball.—Adv.

# Society

## SOCIAL CALENDAR

Friday, October 21

North Hall Formal  
New Hall Formal

Saturday, October 22

Rx Ball  
Sigma Chi Fireside  
Alpha Tau Omega Pledge Dance

Gold Room  
House  
House

### Snowball Fight Opens Season

Winter sports arrived in Missoula Wednesday, when a group of youngsters on Gerald avenue had a snowball fight with imported snow.

The snow arrived in Missoula on top a boxcar that was placed on the siding in the rear of the Milwaukee freight depot.

### JINX and JANIE

Wish the econ quizzers would stop beating around the bush (supply missing word according to your imagination; may be before econ, starting with D and ending with —; or before bush, starting with m and ending with y). As far as we're concerned "capital" means upper case in type; "concrete goods," the building foundation; "hedging," the greenery around the lawn; "labor," getting a laugh out of the public, and "maladjustments," the feuding foresters across the way.

**John Black**, allegedly dignified president of the Law School association, walked into a local soda-lunch establishment last week-end and his face smeared with red grease—probably ordered a tulip sundae, eh Barclay?

Thanks, **T. B.**, for the true and helpful criticism. We really are trying hard. But about this **subtly** you advocate. We agree with Middleton in saying, "This is the fruit of craft, that he that shoots up high, looks for the shaft, and finds it in his own forehead."

Better an empty head than one full of stainless steel.

**Grace Seacare** has something new in the way of endearments. After sealing the envelope of The Letter she leaves the imprint of her lips on the flap and fortifies it with colorless nail polish.

**Johnnie Hanrahan** and **Gordon Hickman** a-hunting did go. After two parabolings they daintily set to cleaning and plucking the eight ducks which they finished on an average of three hours per victim. Simply amazing, this high rate of modern household efficiency.

**Sigma Nu** was entertained at a smoker Monday night by **Curt Simson**. The fellows felt the aquatic film was more than worth five dollars.

According to **Ed Ogle** the only really quiet sleeping place in Missoula is the library. It is, however, apt to excite nightmares of grade points dancing just beyond reach. Try the **Sentinel** office, Ed. (No news, no news, go way, go way.)

### SIX TO ATTEND DISTRICT MEET

Six members of Alpha Kappa Psi, national commercial honorary, are attending the district convention in Eugene, Oregon, October 21 and 22.

**Robert Ball**, Red Lodge; **Houston Bosseler**, Dutton; **Rhyn Lee**, Wolf Point; **Henry Bosholt**, Dutton; **John Graves**, Roundup, and **Miles Bush**, Medicine Lake, will make the trip.

Don't miss the Rx Ball.—Adv.

## It's a Royal I Want

—because:

1. They write easier, faster, better.
2. There are as low as 10¢ per day.
3. There is a 10-day free trial.
4. Low terms are available to students.

— At the —

# TYPEWRITER SUPPLY

314 N. Higgins "CHUCK" GAUGHAN Phone 2323

### Field Groups To Supervise Student Drive

A student-administered roll call will be conducted among university students during the week following Armistice day. This is the first time the Red Cross has attempted a roll call on a state university campus, stated Robert E. White, state field representative for Montana.

Developments last week cleared the way for the institution of the roll call on the campus. The project as outlined by the field work group supervised by Dr. Harold Tascher was accepted by the Missoula County Red Cross.

R. T. Schaeffer, assistant manager of the Red Cross from St. Louis, and Mr. White, a graduate of Montana State university, expressed great interest in the project. At the regular meeting last Monday Mr. White stated student roll calls had been successfully conducted on two campuses, William and Mary, and Fordham. The success of the roll call here will establish a precedent for other universities to work from. A complete record of the project will be published.

"I am tremendously interested in the success of this roll call," said Mr. Schaeffer. "If university undergraduates recognize the function of the Red Cross we have acquired a valuable assistance."

### Rutledge Parker Gets Recognition From Foresters

**Missoula Man Named President Of National Association At Idaho Meet**

Montana gained additional recognition in forestry circles recently when Rutledge Parker was chosen president of the Association of State Foresters of the United States. State Forester Parker has his offices in the School of Forestry.

The convention of state foresters convened from August 28 to September 3, in Boise, Idaho.

"The election of Mr. Parker as head of the national association has pleased everyone in the west," said Dean Thomas C. Spaulding of the forestry school yesterday. "It is especially pleasing to us on the Montana State university campus where Mr. Parker has given us every cooperation possible and has been of the greatest aid to school projects."

Parker was graduated from the forestry school at Yale university in 1908. He came to Montana July 5, 1908 as a member of the United States Forest Service. His first work was appraising Northern Pacific land within the national forests when the government contemplated buying that land.

In March 1911 he was made acting supervisor of the old Missoula national forest and in 1912 he was appointed supervisor. On July 1, 1924, Parker resigned from the service to handle personal business. On March 1, 1926, he was appointed to his present position as state forester.

# WILMA

MAT. 2 P.M. NOW 7 & 8:45  
30c 40c

## "5 OF A KIND"

Dionne Quintuplets  
Cesar Romero  
Jean Hersholt  
— HIT NO. 2 —

## "Vacation From Love"

Doris Rice  
Florence O'Keefe

## SATURDAY MIDNIGHT

## "FOUR DAUGHTERS"

The Lane Sisters  
Claude Rains  
May Robson  
Also

## "Swing That Cheer"

— With —  
Tom Brown  
Andy Devine

# RIALTO

7 & 9 NOW 2 FOR 25c

## Pal Nite Tonight

2 BIG FEATURES  
**"The Marines Are Here"**  
Gordon Oliver  
HIT NO. 2  
**"LIFE RETURNS"**  
Lola Wilson  
Onslow Stevens

### The University and the CHURCH

**Baptist.** E. S. Burket, who has recently returned from China, will speak at a joint meeting of all young people at the Baptist church at 6 o'clock Sunday night. His topic, both recent and timely, will include important information on the civil war as well as the missionary field.

**Methodist.** The Wesley members will meet at the Methodist church at 7 o'clock Saturday night and from there will go to the roller skating rink for a party. Sunday night the club will hear committee reports at a "square" table discussion.

**University Congregational.** A chop-suey supper will be served

### Forensic Group Plans to Initiate Five Members

Tau Kappa Alpha will initiate five new members at a banquet the last part of October, it was announced last week at the group's first meeting of the year.

To be initiated are Bill Scott, Great Falls; Louise Jarussi, Red Lodge; Mary Templeton, Helena, and Fred Dugan and John Pierce, Billings. The committee in charge of arrangements is Ty Robinson, Kalispell, chairman; Bill Shallenberger, Missoula, and Leroy Purvis, Great Falls.

John Carver, Boise, Idaho, a transfer from Brigham Young university, was welcomed into the chapter. Regular meetings of Tau Kappa Alpha will be 9 o'clock in

## COMMUNITY

"U" STUDENTS, 15c  
Anytime Except Thursdays

Starts Sat. at 11:30 P. M.  
Sunday - Monday - Tuesday

### 2 Major Features!

JOAN BLONDELL and  
MELVYN DOUGLAS in  
**"There's Always a Woman"**  
— Plus —  
**"SUBMARINE D-1"**  
— With —  
Pat O'Brien  
Wayne Morris  
George Brent

# Old Country Club

Visit the New

## Caravan Ballroom

Acts and Songs

## "BUCK" STOWE and His Orchestra

Featuring Songs by Oma Clover

## Right or Wrong?

Here's a little test for you



1. The current used to transmit the voice by telephone is the most delicate current in common use. **RIGHT** ☐ **WRONG** ☐

2. Wire in use in the Bell System would go around the world more than 3000 times. **RIGHT** ☐ **WRONG** ☐

The answers are shown below and here is the answer to another question. When you want to reach the folks back home or someone in another town, the quick, direct way is to telephone. You get the answer now.

Ask "Long Distance" for rates to any towns—no obligation.

## ANSWERS... DON'T LOOK NOW!

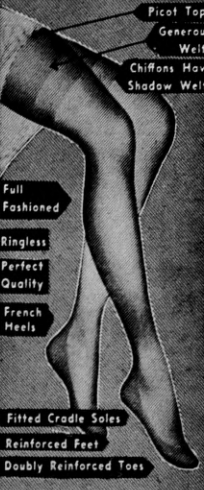
1. **RIGHT.** It is so delicate that Dr. Bell once talked through the bodies of six college professors hooked up as part of the circuit.

2. **RIGHT.** It would go around the world more than 3200 times.

library 305 on alternate Tuesdays, at the church at 6 o'clock Sunday after a sewing bee in the afternoon. A recreational program will follow. Rev. Gordon Bennett will lead discussion in a fireside chat on religion and personality at 5:30 o'clock Sunday.

**Lutheran Students Association.** At 5:30 Sunday students who attend the St. Paul Lutheran church and those attending the Immanuel Lutheran church will meet jointly in the church parlors of St. Paul's for a recreational discussion and musical program.

We'll see you at the Rx Ball.—Adv.



Picot Tops  
Generous Weights  
Chiffons Have Shadow Weights  
Full Fashioned  
Ringless  
Perfect Quality  
French Heels  
Fitted Cradle Soles  
Reinforced Feet  
Doubly Reinforced Toes

## Gaymode SILK HOSE 59¢

Quality and beauty for you at a thrift price! These flawless chiffons and service weights come in a choice of the season's newest colors!

# PENNEY'S



# Grizzlies Meet Sioux For First Encounter In Hostile Territory

Team Will Miss Matasovic's Weight and Experience;  
Dahlberg Reports Nodak Squad Little Altered;  
Fessenden Drills on Offense

Head Coach Doug Fessenden and his squad of 26 fighting Grizzlies entrained yesterday at 3:20 o'clock for Grand Forks, North Dakota, where they will meet the strong Sioux in a grid battle tomorrow, the first time Montana has ever played on North Dakota soil.

The absence of Bill Matasovic, out with a fractured leg, in the center of the line will be felt deeply. Bill provided experience and weight in the line that will be

hard to replace. Al Forte, who has been absent from the squad since the Don fracas in Frisco, will also be missing from the lineup.

Assistant Coach Jiggs Dahlberg, who scouted the North Dakotans last week when they defeated the DePaul Blue Devils, reports that the Sioux have practically the same team as last season. Sioux football tactics are not new to the Grizzlies, as this is the third year of competition between the two schools. Last year the Dakotans were repulsed on Dornblaser field 14 to 3 for the Turkey day festive.

Doug put the Grizzlies through their paces this week and concentrated their drill on offense, which

## Shallenbergers Clash in Final

A drawn-out and bitterly waged fall tennis tournament came to a dramatic climax Wednesday as two brothers, veteran Bill and freshman Garvin Shallenberger fought their way through separate brackets of the best student players on the campus to reach the finals.

Bill dropped Jack Chisholm from the ranks of the undefeated 7-5, 6-3, and Garvin came from behind to defeat Ed Jewett 4-6, 6-4, 6-4, in the semi-finals.

Inclement weather conditions have made it difficult to play throughout the tournament. The final match between the brothers will be played Sunday.

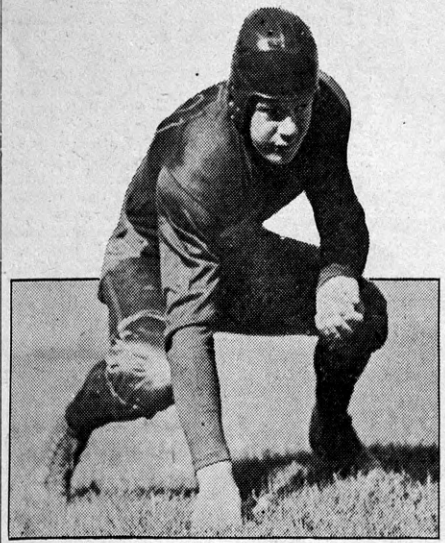
showed weak points in the Red Raider game last week. Coach Fessenden has been experimenting with different combinations of backs to see if a more pointed attack can be worked out.

Despite a strenuous week of scrimmage the Grizzlies are in good shape with the exception of a few minor bruises. In regard to changes in the Grizzly lineup Doug would give no direct statement, but added there was a strong possibility that some shifts would be made. Art Peterson, who has weight but lacks experience, will be called upon to take over the center post.

Scout Dahlberg reports that Coach Jack West has a backfield that makes up for in speed and ability what it lacks in weight. The combination of Fritz Pollard, Olympic hurdler; Bull Ordway, Mike Brenkus and Bob Harshbarger cut through the heavy Blue Devil line like a newly greased snowplow. Jack West Jr., son of the Sioux mentor, plays pivot position and co-captains the team with Gainer at end. Coach West is satisfied with his main stringers but is short of A-1 replacements.

The Grizzlies will arrive at their destination late tonight and will return Monday night.

## Probable Starter



Doug Fessenden will probably start "Doc" Brower in the backfield when the Grizzlies encounter North Dakota tomorrow.

## SAYS HOON!

By JACK HOON

The big guns of the North Central conference will be trained on a crippled Grizzly Saturday when the University of North Dakota Sioux try to break the winning streak of two years held by Montana. A heavy and powerful line combined with the speed of Pollard and Brenkus and drive of Bull Ordway will be a tough nut to crack. Jiggs says that the Dakota backs are so good that Johnson, hard-running colored back of last year, can't even make the team.

However, the Grizzly team, crippled by the loss of Matasovic and Forte, is digging in and showing more fight and zip than they have at any time this season. Thornally and Shegina have been switched to tackles and are looking good at the key defensive positions.

It's evident that the Sioux think a lot of the Montana game, for they have chosen that game for their Homecoming.

The Grizzly line has stopped Pollard for two years in a row and they are intent on doing it again in Grand Forks. Tackling practice has been featured all week in preparation for this high-stepping colored lad.

Here is one for the books! Brothers Bill and Garvin Shallenberger have advanced to the finals of the fall tennis tournament through different brackets and they will face each other sometime this week to decide who is champion. Wonder how the family is split up over the impending match?

If anyone can have fun flat on his back in a hospital it is big Bill Matasovic. Bill has been swamped with food, flowers and cigars ever since he has been able to see people. It's mighty nice to know that people won't be forgetting big Bill while he lies in St. Patrick's.

The passing combination of Potter to Ryan has featured a long winning streak in touch football for Phi Delta Theta. Ryan has been on the receiving end of seven touchdowns passes thrown by Potter in the last three games.

Remember that next week is Homecoming for the Idaho game. The student organizations are planning the biggest entertainment that the school has ever seen. Don't be afraid to get in and help make this a great day for Grizzlies!

## Coffin Corner

Your improving Pigskin Prophet turned in a surprisingly good batting average of .800 last week-end. The dope was upset by Montana's unexpected loss, and yes, we bet on Washington again. As a result of this phenomenal competence of the Kaimin Krystal, the colyum is making a bold stroke for this week-end in forecasting, not 10, but 20 games.

To add a dash of sparkle and color to the predictions, three outstanding state high school games and a couple of Greek Row clashes will be included in the lengthy list.

Look over this connoisseur's scroll and lay your bets. Perchance you think the prognosticator is blowing his horn too loud. That blare you hear will probably be coming from Gabriel's horn, tooting over the Coffin early Sunday morn. Space doesn't allow much hearsay about the games, but we'll give disa and data. Here we go!

Montana vs. North Dakota: More Indians! Last week Red Raiders whooped it up and now the Sioux are on the warpath. Chief Scout Dahlberg reports Nodak tribe on the warpath. White men of Montana are irked about recent defeat. It'll be a battle royal, but Doug's boys will emerge on top. Reason: Did you see 'em go in scrimmage this week with their new bag of tricks?

Washington vs. California: After four games without a victory, we don't favor the Huskies. We've chosen them wrong, but this time we're going to choose them right. Even if the Golden Bears play in Seattle, California by two touchdowns.

Stanford vs. U.S.C.: A hard one to pick. Troy barely hurdled W.S.C. while the Cardinals defeated ex-league-leading Oregonians. A slow starter this season catching stride here. Stanford.

U.C.L.A. vs. Idaho: Another tough one. The Hot Potato boys have it in them to come through with a hard-earned win. U.C.L.A. is due for a big surprise from this Vandal club. Idaho in a high-scoring contest.

O.S.C. vs. W.S.C.: Oregon State is not considered a top-rate club but they are good enough to beat what little the dismantled Cougars have to offer.

St. Mary's vs. San Francisco: That untarnished record of unscored on, undefeated is in for a rough time. San Francisco has a sparkling club but St. Mary's has too much power.

Missoula vs. Anaconda: Fans won't have to go out of town this week-end for their entertainment with two excellent high school elevens playing on Dornblaser. Anaconda is undefeated and has a strong club. But look for a spirited and rejuvenated Missoula club to provide the pyrotechnics in a hard-fought triumph.

Oregon vs. Fordham: Oregon's Webfeet are biting off a mighty big chunk, possibly bigger than they can chew. Fordham is strong this year and it looks like an intersectional loss for the Pacific coast.

Phi Dels vs. S.P.E.'s: Will Baucus and his boys in blue are out for the cup. This game shouldn't mar the Phi Delt record by a long ways.

WHILE THE GRIZZLIES SCALP THE SIOUX—Meet Your Friends for a Pow-wow at the Pallas Candy Company Sandwiches, Candy, Fountain, Beer

Pittsburgh vs. Southern Methodist: Is anybody going to stop those Panthers? That Dream Backfield will steamroller the boys from S.M.U.

Michigan vs. Yale: Michigan has one of the best teams in the country even though they lost last Saturday. The Michigan wrecking crew stopped Minnesota but they'll murder Yale.

Northwestern vs. Illinois: All that power of the Wildcats is due to get some results on the scoreboard. Northwestern will come out ahead unless the Illini play super football.

Great Falls vs. Helena: An important northern district game with the loser practically out of the running. The Bisons, as usual, have tonnage, but Helena has a snappy, up-and-coming club. A shaky ballot for the Capital City Bengals.

Colgate vs. Iowa: Iowa will show the superior brand of Big Ten football against the pride of the east. Iowa.

Auburn vs. Georgia Tech: Georgia Tech, the team that held powerful Notre Dame to a low score, looks much better than Auburn.

Purdue vs. Wisconsin: Two evenly matched teams on paper. Purdue has a better defense than its opponent. Purdue by one touchdown.

Utah vs. Utah State: Utah U. Phi Sigs vs. Sigma Chi: Mariana and the Gharardo brothers look like too much for the Sigs. Though

pressed at moments, the boys from the west side of the street by two touchdowns and a field goal.

Penn vs. Columbia: The Quakers will have to smother Sid Luckman if they want a victory. They'll do it.

Butte vs. Butte Central: City championship, all that either team can grab this year, to the Publicans.

### GUNSTOCK BROWN

—A smart Jarman leather tone for the new Fall Season— goes correctly with the newest fabrics... In full range of sizes.

\$5.00

### Jarman

SHOES FOR MEN

Most Styles \$5 TO \$7.50

### THE HUB

All Jarman Shoes are Tread-Tested in actual walking tests.

## JUST ARRIVED

### New University Stationery

Your choice of white or ivory vellum paper. Stationery has a beautiful reproduction of Main hall hall engraved on each sheet.

### The Office Supply Co.

221 N. Higgins

Every Friday Night Is University Night At the Park

# PARK At the PARK

Clean Entertainment for Clean People In Clean Surroundings

Plenty of Parking Space Around the Three-Street Hotel

PLAYMOR — 6353 — PLAYMOR — 6353 — PLAYMOR — 6353 — PLAYMOR

## Duck — Deer — Elk

We Feature the Hunter's Needs

12-GAUGE SHELLS 77c RED CAPS 49c

"Our Service"—Licenses, Duck Stamps

## PLAYMOR SPORTING GOODS SHOP

531 South Higgins Avenue

PLAYMOR — 6353 — PLAYMOR — 6353 — PLAYMOR — 6353 — PLAYMOR

# Rx BALL

## ALL-SCHOOL FORMAL

### October 22

Hal Hunt's 10-Piece Orchestra

### In the Gold Room

Tickets \$1.10 Limited Sale

### The Center Of All Good Times

After the game or show bring your girl over for one of those famous Hamburgers, Malts, Shakes and Beer at its best at the

## MISSOULA CLUB

Next to Missoula Hotel

KGVO Will Broadcast Play-by-Play Account

Play-by-play wire account of the North Dakota-Montana football game at Grand Forks will be broadcast over KGVO at 1 o'clock Saturday.

Nick Mariana will give the report as it is received over the wire.

Service Groups Name Committee For Annual Ball

The committee for Varsity Ball, fourth annual Bear Paw—Spur dance, November 5, has been announced.

Bear Paws who have been appointed on the committee are Derek Price, Anaconda; Bill Lueck, Billings, and Jack Hagens, Missoula. They will work with Marjory Long, Lodge Grass; Sally Hopkins, Paradise, and Helen Heydort, Missoula, of the Spur chapter. Catherine Berg, Livingston, is in charge of programs.

Jack Baumgartner's orchestra will play.

Journalism Honorary Selects New Adviser

Theta Sigma Phi, women's journalism honorary, has announced the appointment of Mrs. Elinor Nofsinger, '38, as alumna adviser of the Montana chapter. She succeeds Mrs. Lee Metcalf, who was Donna Hoover, former secretary of the journalism school.

Mrs. Nofsinger was secretary of Theta Sigma Phi last year and editor of Campus Rakings, Aber day publication.

Dance to Hal Hunt at the Rx Ball.—Adv.

Walford Electric Co. Phone 3566 Exclusively Electrical Stewart-Warner Radios

George Janke Frank Spon, Prop.

### IT PAYS TO LOOK WELL

## TRAIL BARBER SHOP

Corner Higgins and Broadway Missoula, Mont.

## Here's Your Key To Ref's Code

Once in a while football officials go through motions which the average Gus Fan doesn't comprehend. Instead of your having to ask your neighbor what it's all about, here's a handy batch of answers to the officials' semaphore code:

When you see the white shirt sleeves go up parallel, it means a score. That is the most important antic.

Two sleeves in the air with hands locked means a safety. When one team is offside, the arbitrator puts hands on hips, points to guilty team, and starts walking—five yards.

On more serious offences he steps off 15 yards. A military salute means unnecessary roughness.

Hands outstretched straight ahead, palms up, means interference with pass receiver and pass ruled complete.

Both arms out in front with one hand grasping the other is just what it looks like, holding.

On attempts for extra points after touchdown, watch the white-shirted whistler. If his arms go up,

it's good, but if they cross each other, then no soap.

The ref blowing his tooter, making an imaginary slice behind his legs with his hands and stepping off a brisk 15 paces, means somebody clipped, that is, blocked from behind.

Pearl Larson, Culbertson, and Lloyd Stenmark, Plentywood, have withdrawn from school.

Take THAT girl to the Rx Ball.—Adv.

## BALLOON DANCING

### Saturday Night

## LOYOLA AUDITORIUM

Admission 25c Eddy's Harmony Five

### See the World's Smartest Motor Car... the

## 1939 STUDEBAKER

Faculty and students are invited to see this refreshingly different car.

## NYBO & CO., Inc.

216 West Main

## 1939 CHEVROLET

... on Display ...

### SATURDAY, OCTOBER 22

Chevrolet is ahead again this year with a more complete car than ever. Perfected hydraulic brakes with the trigger-control emergency, all-steel Fisher body, perfected knee-action, zero-stream styling, vacuum gear shift, longer riding base, telescopic clutch and the famous valve-in-head engine make the 1939 Chevrolet a bigger and better buy than ever.

## Fisher-Kraabel Co.

301 West Broadway

— For —

## Better Light Better Sight Better Grades

Use an

## I. E. S. Study Lamp

I. E. S. Lamps make burning the midnight oil less of a strain on your eyes and enable you to study with more effect. They furnish the right amount of light with no glare.

SEE YOUR DEALER — or —

## The Montana Power Co.



# New Record Is Hung Up By Phi Delt

## League Leaders Defeat Theta Chi, 52-0, Wednesday

Phi Delta Theta set a new high in single game scoring and lengthened its lead in the Clover Bowl league by defeating Theta Chi, 52 to 0.

Phi Sigma Kappa ran over Sigma Phi Epsilon, 20 to 0, Tuesday afternoon to chalk up its fourth win.

Mariana, Phi Sig passing wizard and sparkplug of their attack, dropped a field goal in the opening period to start the scoring.

The first touchdown came in the second period on a pass from Mariana to Clarkin. Mariana dropped back and heaved a long pass to Morrison in the end zone. Mariana's attempt for extra point was good.

With a few minutes to play, Mariana dropped a field goal for the final three points.

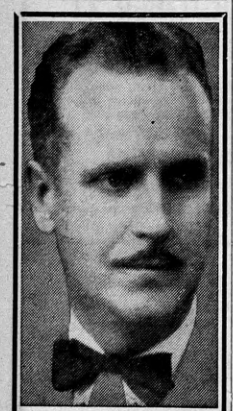
Alpha Tau Omega added another game to the Mavericks' lost column in Tuesday's nightcap tussle by a score of 13 to 3. The first scores came in the second quarter when Lubic, ATO, passed to Morrow. Lubic converted the extra point. In the same quarter Noreen contributed the only Maverick counters by kicking a field goal.

Again in the final quarter, Lubic passed to Clark in the end zone but missed his conversion attempt.

Phi Delt went on a scoring spree Wednesday afternoon and ran their score over the half-century mark. Potter, ace Phi Delt passer, threw to Ryan for the opening score. Potter converted from placement. A few minutes later Jones intercepted a Theta Chi pass and ran it back for a touchdown. Potter missed his conversion attempt. A few plays later Potter dropped back and tossed to Robinson in the end zone. Potter added his conversion point.

Both teams battled back and forth with no results for the second quarter. Ahders stopped a Theta Chi pass and stepped over into the end zone in the opening minutes of the third period. Potter's try for point was blocked.

Jones intercepted a pass for the second time and ran up six points.



**Jack Mills**  
In Person—and his 12-Piece Radio Broadcasting Orchestra  
**CASA LOMA**  
Sat. Night, Oct. 22  
Admission 40c to All

**Ninth Annual**  
**ROCKY MOUNTAIN BOWLING TOURNAMENT**  
October 23-30  
HOMECOMING GAME  
Idaho vs. Montana, Saturday, October 29  
**IDLE HOUR ALLEYS**  
119 East Broadway

# Women Appoint Strom to Change WAA Handbook

Mary Strom, Whitefish, was appointed chairman of a committee to revise the WAA handbook at a meeting of the association's board Tuesday night. Other committee members are Jeanne Ruenauber, Plains; Lois Bauer, Columbia Falls; and Louise Hodson, Missoula.

All girls wanting to make the hockey team must have 10 practices completed by October 29. Practices are from 2 to 4 o'clock on Mondays and Wednesdays, and from 10 to 12 o'clock on Tuesdays and Thursdays.

Those planning to participate in the swimming meet must have 10 swimming practices completed by November 22. Practices are at 5 o'clock on Tuesdays and Thursdays. The Interscholastic meet will be the week after Thanksgiving. The class meet will follow the next week.

Twelve individual sports hours must be turned in by December 2. Girls completing their practices by then must participate in the tournament the following week to receive individual sports credit.

Board meetings of WAA have been changed to 5 o'clock on every other Wednesday. The next meeting will be in the Eloise Knowles room on November 2.

Potter booted the extra point.

The fourth period was a series of passes that ended in touchdowns. To start it off, Ahders passed to Ryan for the score. Potter converted. A few minutes later Robinson snatched a high one from Potter to score. Potter's attempt at conversion was wide. For the final score Potter threw to Ryan waiting in the end zone. Potter missed the extra try.

The SAE's added another win by defeating Sigma Chi, 6 to 0 in a thrill-packed contest Wednesday. Both teams battled on even terms the first half, but in the third quarter the SAE's opened up with a razzle-dazzle brand of ball and started clicking off yards.

In the fourth quarter, Hallowell, SAE guard, intercepted a Sig pass and on the following play Roberts passed to Kommers, who lateraled to Schulte on the one-yard line. On the fourth down Roberts tossed a pass to McCulley over the line for a touchdown. The try for extra point was blocked.

Mavericks won their first game of the season Tuesday afternoon by defeating Phi Sigma Kappa, 2 to 0, in an overtime period. Both teams played tight, conservative ball throughout the game and intercepted many passes.

In the overtime period the Phi Sigs advanced the ball 20 yards over the middle marker. On the fourth down, Hugh Herbert dropped back and threw a long, high pass to Burgess, who was tagged in his tracks about one foot over the 50-yard marker. The Phi Sig pass attempt was knocked down, ending the game.

Sigma Nu defeated Sigma Phi Epsilon, 10 to 0, in the second game. In the opening period Reeder passed to Larson for a touchdown. Larson dropped the extra point. The final points came in the last quarter when Larson dropped a field goal.

**League Standings**

	W.	L.	T.	Pct.
PDT	6	0	0	1.000
SN	4	2	0	.666
PSK	3	1	1	.600
TX	3	2	0	.600
SAE	3	3	0	.500
SX	2	3	0	.400
ATO	1	3	0	.250
SPE	1	5	0	.200
Mav	1	5	1	.166

Take THAT girl to the Rx Ball. —Adv.

# Nelson Will Appear On Kalispell Programs

Muriel Nelson, Missoula, senior in the School of Music, has been invited to play to programs on the Hammond organ of the Lutheran church in Kalispell. One program will be Saturday night and the other Sunday afternoon.

# As You Like It

Members of Montana's Second Study Club Start Forty-seventh Year

If while casually glancing over the society news you should read an item about the "As You Like It" club don't pass it off lightly. It has its place in history as the second study club to be founded in the state of Montana.

In 1892 ten women, none of whom are living today, gathered together in the afternoons every now and then to report on current books of prose or poetry — not Shakespearean, but just "as they liked it." Six years later a constitution and by-laws were drawn up and the traditions which, in 1938, set the "As You Like It" apart as something more than a mere study club, began their growth.

The membership is confined to 25. No new member is elected unless there is a resignation or a death. The club traditions are passed from mother to daughter as a cultural heritage. Many of the women in the group today are second generation members.

The club song was written by Mrs. Mary Curtis Knowles, mother of Eloise Knowles.

Study has included various aspects of history and culture, theories of education, the Bible, travelogues, and for the past year has confined itself to an analysis of "Our Country."

Women well known on the campus who belong to the "As You Like It" club today are Mrs. Theodore Brantly, Mrs. G. A. Ketcham, Mrs. N. J. Lennes, Mrs. A. S. Merrill, Mrs. W. E. Maddock, Mrs. J. P. Rowe, Mrs. W. E. Schreiber, Mrs. H. T. Wilkinson, and Mrs. Tyler B. Thompson.

Dr. Meredith Hesdorffer returned from Minneapolis Monday afternoon, where he attended a special 10-day course in general medicine at the University of Minnesota.

The course, giving particular attention to respiratory diseases and pneumonia, was taught by the staff members of the Minnesota school and the Mayo clinic.

Dr. Hesdorffer attended the Minnesota-Michigan game Saturday.

"It was the best game I have ever seen," the director of health service commented on the game.

# Col. Roosevelt Attacks Policy Of New Deal

New Deal "folly" of building a 40 billion dollar public debt has "mortgaged the future and closed the path of opportunity to American youth," Colonel Theodore Roosevelt, Jr., son of the rough-riding "Trust Buster," said at the Student Union theater Wednesday night.

Because of the policy of curtailed production and indiscriminate spending adopted by the New Deal, the American people have lost confidence, the cost of living has been increased and the standard of living lowered, the nation's store of wealth squandered and a gigantic debt substituted, according to Roosevelt. "This administration is definitely twisting our democratic form of government, opening the way for tyranny and if allowed to continue will establish a dictatorship," he charged.

Stressing the importance of the November election, he said that voters must determine what shall control the president. "Put the right man in office and you'll stop a lot of the foolishness that is going on."

Roosevelt, a famous explorer, author and politician, arrived Wednesday by plane from Chicago. Yesterday he flew to Miles City and Spearfish, N. D., where he was scheduled to make addresses.

# ADVISERS TO SANCTION ENROLLMENT CHANGES

Students who wish to make changes in enrollment must secure approval of the chairman of advisers, Dean R. H. Jesse, as well as of their instructor and adviser, beginning Monday, October 24.

Students of professional schools must secure approval of the dean of their school as well as of the chairman of advisers.

After October 24 students who withdraw from courses because of unsatisfactory scholarship will receive a grade of F unless they can show that failure was due to ill health, overwork, or causes other than their own negligence.

Dean and Mrs. R. C. Line invite all students interested in metaphysical study and discussion to attend a tea at their home at 4 o'clock Sunday. Those wishing to attend are asked to phone 5-1404. Transportation will be provided.

Patronize Kaimin Advertisers

# Dr. Hesdorffer Takes Course At Minneapolis

Dr. Meredith Hesdorffer returned from Minneapolis Monday afternoon, where he attended a special 10-day course in general medicine at the University of Minnesota.

The course, giving particular attention to respiratory diseases and pneumonia, was taught by the staff members of the Minnesota school and the Mayo clinic.

Dr. Hesdorffer attended the Minnesota-Michigan game Saturday.

"It was the best game I have ever seen," the director of health service commented on the game.



Students at the School of Forestry will begin preparations for their shooting season with the annual reorganization of their rifle club tomorrow night at the ROTC building. Officers will be elected. Plans call for matches between various campus and Missoula organizations. There also is a possibility that intersectional matches will be held with other schools.

Last year the Forestry Rifle club participated in Garden City Rifle association matches. The club has been affiliated with the National Rifle association since 1920.

Forestry officials urge that all students attend the meeting. Hoping that this year's team will be stronger than that of last year, officers state that the only way possible to bring this about is to have a large representation from which to choose team members.

# District Meetings Will Be Attended

Fourteen professors and instructors will attend five district meetings of the Montana Education association throughout the state on October 27, 28 and 29.

Professors Paul Bischoff and A. C. Cogswell will go to Billings; Professors R. A. Coleman, W. R. Ames, Harold Tascher and Instructor Edward B. Dugan, Bozeman; Professors B. E. Thomas, H. G. Merriam and R. L. Housman, Great Falls; Professors Lucia B. Mirrieles, J. W. Severy and George Yphantis, Kalispell, and Professor G. D. Shallenberger and Instructor James N. Holm, Wolf Point.

All are to make addresses at the meetings on various aspects of education.

# Your Quizzes Consume Pulp

If all the mimeograph paper stacked in the hallway of Main hall basement were evenly divided among the 1,939 university students, each student would have approximately three and one-half sheets of paper a day for the next 36 days.

Students passing through the basement may have noticed a long stack of packages along the east wall of the hallway. If curious, they could count 51 packages with 10 reams per package, or 255,000 sheets of paper.

"The paper in the hallway will probably last about 36 days," Esther Eichler, assistant director of the clerical service, said.

Students taking survey courses will be given more than their share of the paper. The biological science course uses the most paper per day, 500 copies of quizzes twice a week. The usual quiz being two pages, two reams of paper are puzzled over each week.

# Shelby Student Writes For Legal Publication

Burke McNamer, junior law student from Shelby, has had an article published in the periodical edited by Phi Delta Phi, national legal fraternity.

The story concerns the life and work of Carl McFarland, graduate of the law school in 1924, who is now assistant U. S. attorney-general under Homer Cummings in Washington, D. C.

Patronize Kaimin Advertisers

**J. M. LUCY & SONS, Inc.**  
Furniture — Floor Coverings — Crockery  
Hardware  
Phone 2179

# Winner of Fellowship Studies at Minnesota

Robert Van Haur, winner of the Ryman fellowship in economics last year, is taking graduate work at the University of Minnesota.

The fellowship was founded in 1927 by the late J. H. T. Ryman, Missoula, by a bequest of \$10,000, the income of which is to be awarded every fourth year (first award in 1930) to a student of that year's graduating class who has shown distinctive ability and promise in economics and sociology. The purpose of the fellowship is to enable honor students to continue study in some graduate school of recognized standing and leading to the degree of doctor of philosophy.

# Shooting Season To Be Planned At Club Meeting

Students at the School of Forestry will begin preparations for their shooting season with the annual reorganization of their rifle club tomorrow night at the ROTC building. Officers will be elected. Plans call for matches between various campus and Missoula organizations. There also is a possibility that intersectional matches will be held with other schools.

Last year the Forestry Rifle club participated in Garden City Rifle association matches. The club has been affiliated with the National Rifle association since 1920.

Forestry officials urge that all students attend the meeting. Hoping that this year's team will be stronger than that of last year, officers state that the only way possible to bring this about is to have a large representation from which to choose team members.

# REPLACEMENTS MADE

Gordon Hickman, Great Falls, and Ann Picchioni, Klein, have been appointed by Central board to the Student Store board to replace Cliff Carmody, Kalispell, and Lela Woodgerd, Missoula, who resigned.

# Frontier's Story To Be Reprinted

H. G. Merriam, chairman of the English department and editor of Frontier and Midland, has received a request for permission to print "Gods of Darkness," short story by Charles Hilton, in Braille.

The story first appeared in Frontier and Midland in the spring issue of 1937, and was reprinted in the O. Henry Memorial volume in 1937.

The author received his B. A. degree in English from the University of Washington and his M. A. from Montana State university in 1933.

Pictorial Review magazine has also asked to reprint from the spring, 1938, Frontier and Midland Iris Lora Thorpe's "Trails to the Grey Emeriors" in the American Album of Poetry.

# FOOTBALL SCHEDULE

October 21—4 o'clock, TX vs. SAE; 4:50 o'clock, PDT vs. SPE.  
October 22—10 o'clock, SX vs. PSK; 11 o'clock, SN vs. ATO.  
October 23—10 o'clock, SX vs. ATO; 11 o'clock, SPE vs. Mav.; 3 o'clock, ATO vs. TX.  
October 24—4 o'clock, PDT vs. SN; 4:50 o'clock, PSK vs. TX.  
October 25—4 o'clock, ATO vs. SAE; 4:50 o'clock, SX vs. SN.

# BE IN STYLE

Know your hair looks perfect. Come to us for that assurance.

**Allen's Beauty Clinic**  
114 E. MAIN PHONES 3185 - 3186

# Conger Appoints New Committees For Mavericks

Mary Rose Chapellu, Belfry, was chosen the Maverick candidate for Grizzly Queen at the meeting of the club Monday night. Everton Conger, president, appointed committees.

Members danced after the business meeting. The second issue of the Roundup, Maverick paper, was published Thursday.

**Committees Appointed**  
Membership committee: North hall, Dean Brown, Rosemary Jarussi and Mary Rose Chapellu; New hall, Fil Pease, Midge Grimm and Jo Raymond; Corbin hall, Dwight Millegan and Stub Elliott; South hall, Bill Mufich, Richmond Pease and John Glass.

General committee: Walt Hook, Jack Pachico, John Glass, Earl Lovick and Ed Stryo.

Floater committee: Emory Steensland, chairman; Lynn Ingersoll, Walt West, Mill Bonfield, Jack Pachico, Al Cullin, Joe Harris, Bill Mufich, Eloise Carver, Sybil Christiansi, Ruth Haglund, Dolores Walker and Valerie Lapeyre.

Meeting programs: Valerie Lapeyre and Dolores Walker.

Activity committee: Masquers, Mary Rose Chapellu; Skitters, Aylene Jensen; swimming, Paul O'Hare; women's basketball, Mary Strom; men's basketball, Emory Steensland and Stub Elliott; music, Art Dahl; touchball, Stub Elliott.

Program committee for dances: Harriet Moore, chairman; Midge Grimm, Mary Louise Dorr, Jo Raymond, Blanche Casto, Wallace West, Charles Steensland and Bob Swan.

Student-Faculty council committee: Earl Lovick, Rachel Gitche, Paul O'Hare, Clyde Dar, Carleen Heinrich, Richmond Pease, John Glass, Ted James and Lon Purkin.

Other appointments to Student-Faculty will be announced later.

# WITHERAL FORMS NEEDED

Students who cease to attend a course without properly withdrawing on forms provided by the registrar's office will be assigned grades of F.

# Professor Goes To Minneapolis

Dr. G. D. Shallenberger, chairman of the Physical Science department, left Wednesday to attend a national conference of summer school directors in Minneapolis.

He will return to Montana Sunday to make a week's tour of cities from Helena to Wolf Point, interviewing former and prospective university students in the interests of the Board of Recommendations and the summer session.

**TYPEWRITERS**  
Repairs, Rentals  
**Remington Rand Inc.**  
118 East Broadway  
NORMAN LEE, Representative

# Lose Anything? Strayed Articles Displayed In Secretary's Collection; Owners Can Call Anytime

History is filled with heart-rending tales of things that have been lost and students in the Journalism building are making history.

Marie Antoinette is known as a gal who lost her head because she offered hungry Frenchmen cake instead of pea soup and frog legs.

Many are the shoemakers who have mourned over lost soles, to say nothing of heels.

Department store package wrappers as well as musicians and college undergraduates have wept over lost cords.

But all this, including the long-haired idealists with their lost causes, are mere trifles to the things lost in the Journalism building, according to Miss Charlene Johnson, school secretary.

Among Miss Johnson's souvenirs are a Grizzly belt buckle, an army belt, an army cap, a pair of tap shoes, a broach in the form of a

# A Valuable Lesson

Meat leads in the food elements that are essential to health.

Ask for DaCo Inspected Meats

**John R. Daily, Inc.**  
115 W. Front St.  
Phone 2181  
Branch  
**Model Market**  
Phone 2835

SEE THE NEWEST  
**PORTABLE TYPEWRITERS**  
PRICES AS LOW AS \$29.75  
TERMS AS LOW AS \$3.00 PER MONTH  
**Lister Typewriter Service**  
Phone 2457 No. 12 Hammond Arcade

**Charm Bracelets...**  
are the thing to capture the eye of that handsome fellow that sits next to you in class.

**B & H JEWELRY**  
The College Jewelry Shop

**ALL THE NEWEST SCHOOL**  
**Chaffords**  
Paris Fashion SHOES  
Guaranteed as advertised in Good Housekeeping

**Buttreys**  
280 N. Higgins