

University of Montana

ScholarWorks at University of Montana

Montana Kaimin, 1898-present

Associated Students of the University of
Montana (ASUM)

5-4-1939

The Montana Kaimin, May 4, 1939

Associated Students of Montana State University

Follow this and additional works at: <https://scholarworks.umt.edu/studentnewspaper>

Let us know how access to this document benefits you.

Recommended Citation

Associated Students of Montana State University, "The Montana Kaimin, May 4, 1939" (1939). *Montana Kaimin, 1898-present*. 1735.

<https://scholarworks.umt.edu/studentnewspaper/1735>

This Newspaper is brought to you for free and open access by the Associated Students of the University of Montana (ASUM) at ScholarWorks at University of Montana. It has been accepted for inclusion in Montana Kaimin, 1898-present by an authorized administrator of ScholarWorks at University of Montana. For more information, please contact scholarworks@mso.umt.edu.

THE MONTANA KAIMIN

MONTANA STATE UNIVERSITY, MISSOULA, MONTANA

Z400

THURSDAY, MAY 4, 1939. VOLUME XXXVIII. No. 84

Pantzer Beats Pierce 675 to 538

Thirteen Make All A's; Anderson, Kohnen Lead

Each Scores Fifty-seven Grade Points

Number Increased by Nine Over Fall Quarter; 198 Named

Ernest Anderson, Great Falls, and Kenneth Kohnen, Shelby, tied for top place on the winter quarter honor roll, each with 57 grade points and an index of 3.00, according to the registrar's office.

The entire list of 198 includes nine more names than autumn quarter, with 13 students getting a 3.00 index, compared with seven for fall. Kohnen was sole possessor of top position fall quarter, when he earned A grades with 57 grade points.

Several classes are graded by pluses and minuses rather than a conventional grade. Such marks are recorded as C's and may tend to keep students enrolled in these classes off the honor roll, the registrar's office said.

Eligibility rules for the honor roll require a minimum of 36 grade points with an index of 2.00, or a minimum of 30 grade points with an index of 2.50. No student is eligible if he has an E or F on his current record.

Students on the honor roll, with indices, are:

Ames, Stanley R., 2.56; Andereg, Arnold H., 2.29; Anderson, Ernest R., 3.00; Anderson, Leland A., 2.12; Anderson, Raymond H., 2.67; Anderson, Sylvia Louise, 2.22; Angstman, Albert C., 2.95; Annon, Alberta, 2.69; Armstrong, June M., 2.12.

Ballard, James J., 2.42; Bandel, Herman W., 2.17; Bartlett, Eusebia A., 2.75; Bellingham, William, 2.56; Berry, James Calvin, 2.59; Blondeau, Rene, 2.78; Boe, Kenneth N., 2.47; Boorman, Barbara J., 2.88; Bostwick, Dave A., 2.89; Bourdeau, Robert V., 2.61; Bovee, Frances R., 2.65; Bowler, Dwayne W., 2.64; Bowman, Robert L., 2.29; Bradeen, Donald O., 2.56; Brown, Ruth C. (Mrs.), 2.56; Brownlee, Grace, 2.33; Buckingham, Ward, 2.67; Burdick, Merritt David, 2.42; Burgess, Carl C., 2.24; Burgess, Thomas C., 2.56; Burton, Dorothy E., 2.50; Burton, Jane L., 2.53; Byrne, Eileen Margaret, 2.50.

Cardozo, Frances N., 2.31; Carr, Clide I., 2.42; Chisholm, John C., 2.33; Claric, Ralph F., 2.31; Clark, Earl Glen, 2.42; Clark, Glen William, 3.00; Clark, Margaret M., 2.11; Clark, Robert K., 2.78; Clemow, Joseph W., 2.12; Cobban, William Aubrey, 2.12; Colfer, Harry F., 2.83; Collom, Charles Robert, 2.00; Connor, William S., 2.38; Cope, Kathryn, 2.40; Copeland, Frances W., 2.53; Corry, Harry Albert, 2.42.

Dahl, Lois May, 2.61; Darrow, Audrey Lee, 2.28; Deranleau, Rob-

Streit, Thieme Will Get Honor Degrees June 5 For Outstanding Work

Author of 'Union Now' and Assistant Regional Forester are Both University Graduates; One Is Former Rhodes Scholar

Clarence K. Streit, foreign correspondent for the New York Times since 1924, and Fred D. Thieme, assistant regional forester, will receive honorary degrees at Commencement exercises June 5, President George Finlay Simmons announced yesterday.

Streit, author of "Union Now," will receive an honorary Doctor of Laws degree. Thieme will be granted an honorary degree of Master of Forest Engineering for his invaluable work in the development of roads and surveying of Region One.

Both men have been prominent in their respective fields, journalism and civil engineering, since their graduation from the univer-

sity. Streit rose to the peak of his profession to become president of the association of correspondents credited to the League of Nations.

As chief of the forestry region with headquarters in Missoula, Thieme supervises all forest engineering over an area of 41,911 square miles, a territory equal in size to Ohio.

Thieme Was Prominent Student

Thieme was graduated in 1912 from the university with a record that few have duplicated. He was president of the senior class and student body, as well as business manager of the Kaimin and the Sentinel. A member of Phi Sigma Kappa, Thieme also belonged to Mu Sigma Epsilon, engineering fraternity, and Hawthorne society, a literary club.

After editing the 1917 Kaimin, Streit interrupted his college training to enlist in the army. He returned to the university after he was discharged from active service with the allied forces. He was a charter member of Sigma Delta Chi, men's journalism professional fraternity.

Won Rhodes Scholarship

Winning a Rhodes scholarship in 1920, he went to Oxford and upon graduation became a member of the Philadelphia Public-Ledger's foreign staff.

As foreign correspondent for the New York Times, Streit spent seven roving years, first in Paris, then Arabia, Turkey, Greece, North Africa and the Balkans. Eight years ago he was assigned to Geneva and the League of Nations. During his wanderings, he covered the revolution in Greece and insurrection among the Rifis. He was first to interview Turkey's strong man, Kamal Pasha Atatürk.

Book Gains Attention

Streit's recently published book, "Union Now," is the result of his eight years at the League and has immediately gained attention because of its new conception of a union of the world's remaining democracies. The separate countries would be held together by common ideals in a co-operative federation similar to the status of

To Get Honors



Clarence K. Streit (above) and Fred D. Thieme will get honorary degrees at commencement June 5.

New President Constitution Is Accepted By 918-110



Bob Pantzer became new president of ASMSU by defeating John Pierce at elections yesterday.

Hopkins, Williams, Berg, Lynch Also Elected; Vote Tops 1200

Bob Pantzer, Livingston, defeated John Pierce, Billings, 675 to 538 votes, for presidency of ASMSU in final elections yesterday. Pantzer carried all four classes. The election was second largest in the history of the university with a total of slightly more than 1200 votes. Last year about 1300 students voted.

Students were in favor of adopting the revised constitution, by an 808-vote majority. Nine hundred eighteen students voted in favor of the revised constitution; 110 were against its adoption.

Sally Hopkins won over Jane Marie Sullivan for ASMSU vice-presidency, 843 votes to 355. Catherine Berg beat Lois Bauer, 660 to 504, for student body secretary, and Carter Williams was elected business manager over Jack Hogan, 634 to 572. Jack Lynch is the new chairman of the board of directors of the Reserve Fund corporation, winning over Cliff Carmody, 680 to 483.

Krell, Nelson, Line Elected

Walter Krell, with 556 votes, and Norman Nelson with 624, are the new members of Store board, defeating Dwight Millegan and Burke Thompson, who polled 479 and 470 votes, respectively. Dean R. C. Line received 952 votes for faculty member of Store board.

Charles Sweeney got 236 votes for senior class president. Walter Elliott defeated Ed Shults, 133 to 123, for senior delegate to Central board. Gwen Benson was elected vice-president by seniors, polling 205 votes to 55 for Josephine Maury. Peggy Wilson beat Harriet Moore, 182 to 71, for senior secretary, and Mary Fuller won over Louise Hodson, 192 votes to 57, for senior treasurer.

Juniors Prefer Button

Next year's junior class president, Carlobelle Button, received 130 votes to 120 for Ruth Harrison. John Kujich beat Walter Martin for vice-president, 167 votes to 88. Frances Whalen, with 136 votes, won over Dorothy Dyer, who polled 118, for junior secretary. Bill Lueck defeated George Ryffel, 140 votes to 119, for junior delegate to Central board. Doris Mooney got 189 votes to beat Louise Selkirk, with 68 votes, for junior treasurer.

Fred Henningsen and Joel Story tied at 161 votes each for president of the sophomore class. Freshmen will break the deadlock at a special election Tuesday at 4 o'clock. Barbara Streit won over Emmajane Gibson, 190 votes to 137, for sophomore vice-president. Katherine Sire, with 194 votes, was elected secretary over Helen Johnson, with 151. Betty Stoebe beat Ruth James, 182 votes to 159 votes, for sophomore treasurer. Hugh McNamer,

(Continued on Page Four)

Billings Meet Is to Attract State Orators

Scott, Williams, Nelson Will Accompany Holm To Contest City

James N. Holm, instructor in speech; Bill Scott, Great Falls; Carter Williams, Boulder, and Glen Nelson, Missoula, are leaving tomorrow for Billings for the Oratorical association contests Saturday. All Montana colleges are entered.

Scott will be a contestant in the oratorical division, speaking on "Pan-American Solidarity," and Williams and Nelson are entered in the extemporaneous speaking contest. Williams will speak on the general subject of the youth problem, while Nelson has social security as his general subject.

Last year Montana State university won both the oratory and the extemporaneous speaking.

Foresters' Club Gets New Gavel

Bruce Centerwall, former student, has presented Forestry club with a new, heavy-duty gavel. Centerwall, now with the forest service in Minnesota, sent the gavel to Dean T. C. Spaulding to deliver to the club.

In presenting the gift, Centerwall explained that the gavel was heavily built with detachable head "to quell unruly freshmen."

the states in the United States.

The League failed, he believes, because it subordinated the freedom of the individual to the mystical body of the state. Streit's union would give the sovereignty to the people with the state acting as an instrument of the people.

Streit will arrive in Missoula the morning of June 5.

THURSDAY MEETING SET

The freshman reading group will meet at 4 o'clock today at the home of Maribeth Kitt, 325 Daly. A play will be read.

The MONTANA KAIMIN

Established 1898

The name Kaimin (pronounced Ki-meen) is derived from the original Selish Indian word, and means "something written" or "a message."

Published Tuesday, Wednesday, Thursday and Friday during the school year by the Associated Students of Montana State University.

REPRESENTED FOR NATIONAL ADVERTISING BY
National Advertising Service, Inc.

College Publishers Representative
420 MADISON AVE. NEW YORK, N. Y.
CHICAGO · BOSTON · LOS ANGELES · SAN FRANCISCO

Entered as second-class matter at Missoula, Montana, under act of Congress, March 3, 1879

Subscription price \$3 per year.

Printed by the University Press

55

Bill Forbis Editor
Phil Payne Associate Editor
Dan Findell Business Manager

We Need a New Chair of Education —But Not to Sit In

What Montana State university needs is a chair in oikology. In fact, it needs a couple of chairs (plurality of chairs being a seeming necessity in the science which thrives under the classic moniker of oikology).

How the school ever overlooked such a cultural and needed scientific course as oikology is a mystery. Such a course would not only be a pleasure to the students but a double pleasure to the professors.

Professors who believe they have achieved the ultimate in boring students would be surprised at the new avenues opened to them under the heading of oikology. If the average married man can discourse for hours on the boring qualities of oikology, what could a professor, who has made a life study of the art of boring, do with the subject?

Of course, the university has made great strides in its curriculum. Starry-eyed coeds learn to give their prospective husbands spinach. (Later in life when they find men are not rabbits, they unlearn it.) This comes under the heading of home economics. Not so starry-eyed coeds have a spat with the boy friend and then they're all washed up. This comes under the heading of hygiene.

There also are extra-curricular courses in boyology, campuistry, Jocko's gym 142, and many others; but there is no department of oikology. That is like starting out on a journey with no place to go. Home economics, hygiene, boyology, campuistry, and all the rest are merely prep courses for oikology.

Something should be done and done right away to rectify this injustice.

Note: Oikology (in case you feel it's too much trouble to look it up in the dictionary) is the art of dusting and sweeping, commonly called housekeeping.

Commerce and Trade Institute To Draw Experts This Summer

Representatives of all Montana commercial and trade associations are expected to attend the five-day school of the Institute for Commercial and Trade Association Secretaries, July 31-August 5, which will be a feature of the summer session at Montana State university. Dean Robert C. Line of the School of Business Administration recently announced the program of the institute, including the topics to be discussed.

Nationally known experts will lead three one-hour classes each morning and one class and a round-table discussion each afternoon. Line said that speakers and instructors for the classes will be announced later.

Topics for consideration include the organization of a chamber of commerce, work programs, membership, finance, publicity and committee management. Questions of importance to all chambers of commerce, such as agriculture for Montana, livestock, mining and forestry, will also be studied.

The school is sponsored by the university in cooperation with the Montana Association of Commercial Organization Secretaries. Members of the board of governors are H. E. Buck, Billings Commercial Club; Willard Thompson, Butte Chamber of Commerce; Hal Cheney, Missoula Chamber of Commerce, and Dean R. C. Line.

BEAR PAWS TO MEET

Bear Paws will met at 4:30

TX Entertain With Smoker

Members of Theta Chi entertained E. D. "Nick" Huntley, national historian of the fraternity, at an informal smoker last night.

Huntley, who has been visiting here since Monday, is returning to his home in Los Angeles after attending the national convention in Champagne, Illinois, last month. Several members of the local chapter also attended. The national officer plans to visit other chapters in Washington and Oregon on his way to California.

Dean Stone Remembers

● Forestry Trip

"They'll be off Thursday morning," said Dean Stone as he looked across toward the Forestry building where the activity indicated preparations for the hike of the woodsmen. "It's a glorified jaunt that the foresters take these years. It isn't so long ago that they hiked afoot and packed their duffel. Of course, this change has been gradual and natural—forest trails now are as good as city streets and the Montana school, which then had only a local reputation, is known internationally. So the Montana foresters are expanding their radius and these spring trips are becoming journeys which would once have seemed like a year abroad.

"Well, it all helps to put Montana on the map in the right sort of letters and the label is one which we all like to read. Sometimes I am inclined to the belief that we on this campus have a sort of inferiority complex and fail to realize how much is being done here which is good until somebody from far away tells us about it. But I didn't intend to become introspective. I was just about to remark that this is the season when professional, vocational and departmental trips reach their peak.

"Foresters go into the woods, botanists hit for the fields, educators (sorry for them) turn to practice in schools, pharmacists work overtime making sandwiches for picnics, journalists search for subs so they can get a day off, lawyers look askance at Deer Lodge, psychologists head for Warm Springs—and so on. Everybody pretends to be putting his theories into practice but really is just seeking an excuse to get out into the sunshine and forget for the moment the approach of exams. The wood tick holds no terror. We place our trust in faith or serum and dare him to do his darnedest.

"It isn't anything new, this yen of springtime. It is old and it's universal. President Simon calls it a 'biological urge.' I suspect that this is the modernized expression for 'the call of the wild.' And its specific form has changed just as has its appellation. Up there in that bunch of photographs on the wall you'll find some snap shots of spring picnics back in the early nineties. There is one—yes, that's it—which was made in Spring gulch, just east of Sentinel. Doctor Elrod is the leader of the party. Evidently the excuse for the excursion was nature study but that makes no difference—it's the difference between 1909 and 1939 which is the point. Look at the hiking costumes. Then look at the next party you see hitting the trail. Then you'll realize what I mean when I assert that our mores alter with the tempora."

Society

SOCIAL CALENDAR

Friday, May 5

Alpha Phi Formal	Gold Room
Maverick Dance	Silver Room
Sigma Kappa Dinner Dance	Happy Bungalow
Alpha Chi Omega Formal	Elks' Temple

Saturday, May 6

Phi Sigma Kappa Sunrise Party	House
Sigma Chi Spring Handicap	Avalon
Theta Chi Formal	Gold Room
Kappa Kappa Gamma Formal Banquet	Copper Room

Thirteen Get Straight A's

(Continued from Page One)

ert F., 2.33; Dickson, Mary Alice, 3.00; Dobrovolsky, Arretta C., 2.29; Donaldson, Jack C., 2.56; Dratz, Mary Helen, 2.12; Driscoll, Maurice, 2.25; Driscoll, Thomas F., 2.31; Duncan, Eugene M., 2.54.

Eastman, Ruth Margaret, 2.74. Faulkner, Helen Marie, 2.21; Fewkes, Lura M., 2.22; Fleming, Eunice, 2.53; Formos, Helen Pauline, 2.44; Frahm, Betty Jane M., 2.24; Frey, Sara Dean, 2.06; Fromm, Robert J., 3.00; Fuller, Lewis N., 2.53.

Gardner, Earl Basil, 3.00; Garrett T. (Mrs.), 2.16; Geelhart, Wanda L., 2.18; Giarratana, Frank V., 2.11; Graesser, Alfred R., 2.47; Griffith, Richard D., 2.75; Griswold, Manzer J., 2.76; Gulbrandsen, Guy L., 2.18.

Haburchak, Olga, 2.29; Hakola, Gertrude L., 2.61; Haman, Shirley Adelaide, 2.47; Hannuksela, Waino W., 2.35; Harrison, Ruth, 2.18; Hashisaki, Joe, 2.50; Hayden, Hazel E., 2.67; Heinrich, Carleen Mae, 2.89; Herbert, Hugh Sidney, 2.30; Herda, Edward Jack, 2.81; Holmes, Paul Nelson, 2.18; Honeycutt, Harry M., 2.29; Hotti, Nick Leo, 2.48; Hovland, George A., 2.56; Howard, Robert R., 2.61; Huser, Stanley, 2.18.

Jardine, Mary Louise, 2.22; Jarussi, Carmen Louise, 2.11; Jarussi, Hugo, 2.24; Jaten, Eleanor L., 2.22; Judson, Dorothy M., 3.00.

Kiel, Margaret D., 2.47; Kitt, Maribeth, 2.63; Kohnen, Kenneth H., 3.00; Krause, Paul A., 2.74.

Laird, Mary Frances, 2.11; Lane, Helen Marie, 2.21; Larson, O. Ronald, 2.90; Leppink, Herman F., 2.47; Lind, Ellen Jane, 2.59; Lynch, Donald W., 2.78.

McDonough, James B., 2.00; McNabb, Virgil, 2.35; Mahrt, George August, 3.00; Maxey, George Burke, 2.71; Medlin, Vivian B., 2.18; Mellor, Kathryn R., 3.00; Merriam, Alison W., 2.50; Miller, Virginia Rose, 2.88; Minty, Margaret Hayes, 2.73; Moholt, E. Perry, 2.33; Moore, Harriet K., 2.11; Mudd, Mary G., 2.75; Murphey, Byron F., 3.00; Murphy, Lois, 2.40.

Neff, Gertrude A., 2.47; Nelson, Glen B., 2.53; Nichols, Ralph, 2.11. O'Donnell, James E., 2.72; Osburnsen, Laurence, 2.50.

Pachico, Jack, 2.29; Pantzer, Robert T., 2.11; Pappas, Irene, 2.67; Parsons, Isabel Anne, 2.17; Paulson, Richard Eugene, 2.64; Payne, Philip W., 3.00; Peacher, Geraldine E., 2.88; Peters, Joseph D., 2.18; Peterson, Dorothy M., 2.40; Picchioni, Ann Marie, 2.76; Pierson, Gladys Jessie, 3.00; Points, Betty Lou, 2.21; Pope, Mary Louise, 2.25; Powell, Ethyl, 2.50; Preston, Julianne, 2.10; Price, Jay Ellsworth, 2.69; Price, John Boyd, 2.05; Purvis, Leroy E., 2.76.

Quaintance, Grace Doris, 2.64. Ratcliff, Betty Marie, 2.94; Reavley, Marian C., 2.06; Reed, Merton J., 2.92; Rigney, Ethel J., 2.59; Robbins, Robert E., 2.37; Rogers, Henry Thomas, 2.62; Rolston, Thomas H., 2.22; Rooney, Gertrude T., 2.20;

Eleanor Potter of the E-L ranch was a Monday lunch guest of Kappa Kappa Gamma.

Alpha Phi List Dance Chaperons

Chaperons at the Alpha Phi formal Friday night will be Professor and Mrs. John Suchy, Professor and Mrs. E. E. Bennett, Professor and Mrs. E. L. Freeman and Mrs. W. W. Andrus, Alpha Phi house-mother.

Dinner guests at the ATO house Tuesday were Jack Currie, Missoula; Bob McLaughlin, Missoula, and Dan Kelly, Butte.

Actives and pledges of Alpha Chi Omega were entertained at a buffet supper at the house Tuesday night.

Peggy Davis, Helena, was a guest Saturday at the Theta house.

Mrs. Alex Peterson, Sigma Nu housemother, was dismissed from St. Patrick's hospital Tuesday.

Will Chaperon at Alpha Chi Formal

Dean and Mrs. R. C. Line and Professor and Mrs. W. C. Clark will chaperon at the Alpha Chi Omega formal Friday night.

Alpha Delta Pi entertained actives, pledges, alumnae and guests at a buffet dinner Tuesday night.

Mrs. Amelia Gray, Great Falls, was a Sunday dinner guest of Sigma Alpha Epsilon.

SAE's Entertain Dinner Guests

Tuesday dinner guests of Sigma Alpha Epsilon were Bob Young, Bill Carroll, Leonard Thomas, Fred Henningsen and Bob Evans, all of Butte.

Rosenberg, Maurice, 2.00; Rothwell, Leonard E., 2.53; Rowe, Carol Clea, 2.44; Ryffel, George G., 2.32.

Salinas, James C., 2.24; Sawhill, Wallace, 2.30; Schmitz, Avis Marie, 2.88; Scott, Madge T., 2.31; Seidensticker, Sylvester J., 3.00; Shallenberger, Garvin, 2.11; Sheeran, Norman J., 2.58; Shults, Edward Leo, 2.63; Simmons, Helen Annie, 2.53; Simmons, Margaret Ida, 2.53; Sire, Katherine, 2.05; Skriveth, Arnold G., 2.42; Smith, Frances M., 2.59; Smith, Leonard Charles, 2.93; Smith, Sam S., 2.10; Speed, Rosemary, 2.22; Stejer, Francis A., 2.24; Stokke, Gordon O., 2.44; Strandberg, Shirley M., 2.18; Strayer, Ivan John, 2.05; Strickland, Virginia, 2.11; Strong, Tom Herman, 2.22; Sutton, Dorothy Elizabeth, 2.88.

Tiller, Gayle N., 2.12; Timm, Shirley E., 2.05.

Vesely, H. Virginia, 2.83; Vietti, Teresa Mary, 2.59; Vinal, Allison M., 2.24.

Warren, Mary Eleanor, 2.05; Weisel, George F., 2.89; Wheeler, Grace Jean, 2.89; White, Elaine, 2.53; Wiegstein, John T., 2.43; Wild, Jessie Wharton, 2.24; Wilkinson, Tana, 2.44; Williams, John Carter, 2.72; Wilmsen, Clinton George, 2.44; Wimett, Thomas F., 2.11; Wolf, Donald Richard, 2.29; Wynia, Thomas H., 2.41.

Zeeck, Elfriede, 2.75; Ziegler, Betty Jean, 2.59.

Jack Rieder Has Big Day As SN Wins

Pitcher Allows Lone Hit; Collects Two Triples And Home Run

Today: 4 o'clock, PSK vs. Mavericks.

Tomorrow: 4 o'clock, SX vs. TX.

Jack Rieder pitched a one-hit one-run game and connected for two triples and a homerun in four times at bat to give Sigma Nu an 18-1 win over Sigma Phi Epsilon yesterday. Rieder struck out 10 of 13 men at bat and walked none, with Lazetich striking out two in the last inning. Bays and Needham, Sig Ep pitchers, struck out eight, walked seven and allowed 13 hits.

Sigma Nu scored one run in the first inning as Lundberg's sacrifice bunt brought Larsen across the plate. Singles by Mac Rieder and Larsen, a double by Lazetich and a triple by Jack Rieder scored seven earned runs for Sigma Nu in the second.

In the third inning Howerton tripled, coming in on Larsen's single. An error by Gillogy, Sig Ep left fielder, brought Larsen in. Jack Rieder's second triple scored Mac Rieder, with Jack crossing the plate on a wild pitch. Lundberg came home on an error by DeHaven, Sig Ep catcher, and Lazetich's sacrifice scored Kretzer. Score at the end of the third inning was 14 to 0.

Sig Ep's sole run came in the fourth as Berven scored on an error by Jack Rieder. In the last of the fourth Larsen came in on Stout's error, Jack Rieder's homerun scored Mac Rieder ahead of him and Kretzer came in on DeHaven's error to bring the score to 18-1 for Sigma Nu.

Batteries: Sigma Nu, J. Rieder, Lazetich, Larsen and M. Rieder; Sig Eps, Bays, Needham and DeHaven. Umpire, Lubick.

BASEBALL STANDINGS

Team—	W.	L.	Pct.
Phi Delta Theta	5	0	1.000
Mavericks	3	1	.750
Alpha Tau Omega	3	2	.600
Phi Sigma Kappa	3	2	.600
Sigma Nu	3	3	.500
Sigma Chi	2	2	.500
Sigma Alpha Epsilon	1	2	.333
Sigma Phi Epsilon	0	3	.000
Theta Chi	0	4	.000

Schedule Set In Intramural Softball Loop

Intramural softballers will swing into action tomorrow night when Phi Sigma Kappa meets Business Ad in the first league game. Five teams are entered in the softball league.

The schedule is as follows:

May 5, 6:45 o'clock, PSK vs. Business Ad.

May 6, 10 o'clock, PDT vs. Rangers.

May 7, 11:15 o'clock, Loggers vs. PSK.

May 14, 11:15 o'clock, PDT vs. Business Ad.

May 19, 6:45 o'clock, Rangers vs. Loggers.

May 20, 10 o'clock, PSK vs. PDT.

May 21, 11 o'clock, Business Ad vs. Rangers.

May 23, 6:45 o'clock, Loggers vs. PDT.

May 25, 6:45 o'clock, PSK vs. Rangers.

May 26, 6:45 o'clock, Business Ad vs. Loggers.

Whadja Say, John?

By JOHN CAMPBELL

EMIGH ISN'T ENOUGH...

After a year's lapse, Montana and Idaho will renew their flaming rivalry on the cinders when the Grizzlies and Vandals mix spikes Saturday at Moscow. The dual meet, scheduled to take place on Dornblaser field, was shifted to the Palouse country when the California schools revised their track slate, causing a change in dates for northern division schools. Montana trounced Idaho year after year during the 20's, but that golden decade is forgotten as the Vandal scanties have won the major share of meets during the 30's. But while Montana's Clarence Coyle, Russell Sweet, et al. were winning by decisive margins, the Idahoans have won over the Bruin horde by slim margins. As this year's meet stacks up, it appears that another close dual meet will take place, and Idaho will be on top.

In a clash characteristic of track-meets between these neighbor institutions, it will be the familiar story of Montana's not having any strength in field events, and so goes the meet. The Grizzlies are pitifully weak in this phase because there are no beefy weight men, Coach Harry Adams' plight for more than five years.

The fact that Idaho will clean up in the weights coupled with the fact that the Vandals have a powerful troupe of distance runners headed by the great Liebowitz, gives the edge to Paddy Ryan's squad. But Montana's scanties will make things close for the papier-mache tracksters whom Coach Ryan "saved from the WSC meet."

The dashes, hurdles, jumps, middle-distance runs and relay are Montana's strongest events, but with the Grizzly pack not well balanced, this isn't enough. Idaho has its strength in Kirby's 12 feet 10½-inch pole vault mark, Ellison's 46-foot toss in the shot, Ryan's (coach's son) 180-foot javelin heave and Liebowitz's and Slade's low times in the distance events.

If the Grizzlies can place a few seconds in the events where they seem outclassed, they'll capture the

meet. Anyway, it'll be close.

GOLDEN GRIZZLIES READY...

Except for a few last-minute conditioning workouts, the Golden Grizzlies have completed all preparations for their momentous owl clash with the varsity Wednesday night. The latest and perhaps biggest stroke of strategy the old-timers have executed is signing up a competent coaching staff, composed of two former Grizzlies who coached the leading Montana high school elevens last fall.

Clyde Carpenter, Billings prep mentor, will be head coach of the Golden Grizzlies, assisted by Ted Hodges, Great Falls coach. The two wired their acceptance to Doug Fessenden yesterday, stating that they'd arrive here Saturday to look things over. This adds the necessary sparkling touch to the Alumni outfit. Having the two leading Montana high school grid coaches at the helm of the alumni team each spring for this novel struggle will probably become a habit.

"Four, maybe five, sophomores will be in my starting lineup next Wednesday," said Coach Doug Fessenden confidentially. "I'm not saying who they'll be because there is more than one sophomore for each position."

It doesn't make any difference because these soph recruits are all future Montana grid hopes and they'll get their chance sooner or later. Most of them, maybe all of them, will get a fling in the alumni brawl. The spring football season comes to a close Wednesday night and Montana fans should be on hand to see what Fessenden's prize rookies can do against the oldsters. Some mighty good words have been said for these spring candidates.

So a quartet of sophomores will start for the varsity. That probably reminds Fessenden of the 1936 season when he had nearly a straight first-year man lineup. Next week's game might be the Golden Grizzlies against the Green Grizzlies. A few of the sophomores from whom Doug has to pick his starting array are Harris, Swarthout, Strom, Drahos, Bryan, Normandeau, Gustafson, Roberts, Ness, Schuld, Clawson, Duffy and Hall. Which will be the "find" of the spring season?

Regardless of Your Figure

—physically or financially, DRAGSTEDT'S is the place to buy your clothing, furnishings and ox-fords.

If you haven't tried DRAGSTEDT'S lately, drop in today and enjoy the pleasure of shopping in a strictly Men's Store.

DRAGSTEDT'S
"Everything Men Wear"
OPPOSITE N. P. DEPOT

NOTICE

Wednesday, May 10, has been set as the deadline at ROTC headquarters for second-year basic course men to turn their applications in for the advanced course.

Former Grizzly Track Ace Is Designer of New Stage

Professor Arnold Gillette, former Grizzly track star, now technical director of the University of Iowa theater, has designed a stage equipped with an especially designed set of scenery that may be readily adapted to any type of play.

Gillette holds the mile- and two-mile records for Montana and at one time held these records for the Pacific Coast conference. He received his bachelor's degree in fine arts in 1928. Gillette is a member of Phi Delta Theta chapter and Silent Sentinel.

While here in the university, Gillette was active in dramatics and art. He later spent a year studying theater technique in Europe. He reports the stage he is accredited with is not a new idea but one which dates back to the ancient Greeks. He only made it more flexible to enable a greater variety for each individual play. The idea used is that of the formal or basic stage and is used in every country in the world.

Is Simply a Tool

"The stage is a tool," said Professor Gillette, "just as lighting is a tool. With the formal stage, possibilities are almost unlimited."

In this type of stage, doors, windows, arches, fireplaces may be provided in almost any location. All stairs are portable and may be

removed entirely or used in various arrangements.

Three acting levels can be used if the play demands it. They are the forestage, the inner forestage, which is one foot higher than the floor of the forestage, and the upper inner stage or balcony.

The walls of the inner stages, which are mounted on heavy rollers, can be moved so that they are within a few feet of the front, 16 feet from the front, or moved so that they lie at an angle.

A sketch of a Greek stage of a thousand years ago is almost a duplicate of the stage used for one-act plays of the Iowa play production festival. The formal stage throws accent on the player rather than on the setting but the setting can be made into any scene the play demands.

Walford Electric Co.

Phone 3566

Exclusively Electrical

Stewart-Warner Radios

Eleven Co-eds Sign for Golf

Eleven co-eds already have signed for the Intersorority golf tournament May 15 to May 26, according to Martha Jenkins, manager. Any players wishing to enter must do so by May 10. The Student store is offering a silver loving cup to the winning sorority or Maverick group.

The women entered are Elinor Edwards, Jane Fosgate, Eileen Hamilton, Genevieve Antonich, Joan Kennard, Katherine Kelly, Jean Perham, Isabelle McCarthy, Sue Pigot, Maribeth Kitt and Elaine Tipton.

Patronize Kaimin Advertisers

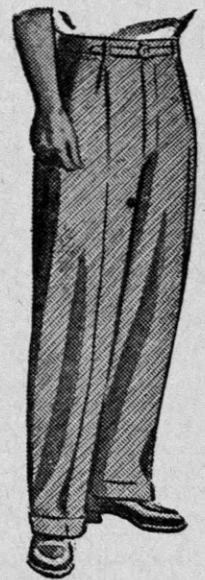
The Weather Man Says—



And keep plenty of it on hand at all times. But to be certain you have the best, always order HIGHLANDER. It's the real refreshing drink to serve when guests drop in. Order from your nearest dealer or direct from us. Just say please send some...

Highlander Beer

You'll Need Slacks!



750 PAIR
from which to choose

Here you have every variety and style from which to make a selection. All the latest colors... styles... and patterns.

Wash Slacks...\$1.25 to \$4.75
Cotton Gaberdine Slacks...\$3
Fancy Gaberdine Slacks...\$5.95 to \$9
River Cool Slacks...\$4.50
LIGHT WOOL SLACKS
Fancy patterns...\$5 to \$7.50

COLLEGE SHOP

The MERCANTILE
MISSOULA'S OLDEST, LARGEST AND BEST STORE

Kappa Delegates to Meet Here Friday, Saturday

Representatives Are Expected from Washington, WSC, Whitman, Idaho, British Columbia, Oregon; National President to Attend

Beta Pi chapter of Kappa Kappa Gamma will be host to delegates from the six other chapters in Iota province of the sorority tomorrow and Saturday. Delegates from all schools in the province will be present.

Barbara Bonnell will represent the chapter at the University of Washington; Betty Kimzey and Irene Kruegel, Washington State college; Rita Moen and Faith Appleby, Whitman college; Dorothy Dyer and Jean Cunningham, University of Idaho.

From the University of British Columbia delegates will be Barbara Shannon and Verna Birmingham. Kay McGuire, Mary Thatcher and Jolienne Woodruff, accompanied by Mrs. Esther Payne, will represent the Oregon State college chapter. Delegates from Montana State university are Adele MacArthur and Gordon Eckford.

Alumnae Listed

Alumnae associations and representatives are Miriam Barnhill, Spokane; Alice Morrow, Vancouver; Mrs. C. E. Francis, Portland; Nettie Galbraith, Walla Walla, and Mrs. Norman Streit, Missoula.

Mrs. Richard H. Shryock, national president of Kappa Kappa Gamma from Merion, Pennsylvania, will attend the convention. Mrs. Shryock will be the principal speaker at the banquet Saturday night.

Mrs. Lous Gerlinger, Jr., Grant's Pass, Oregon, province president, and Nettie Galbraith, Walla Walla, will also attend.

Ferguson Will Welcome

Upon completion of registration Friday, Mrs. Mary Elrod Ferguson, acting dean of women, will give the welcoming address of the convention. Meetings and round table discussions will occupy the morning session. The Missoula Alumnae association will serve tea in the chapter house during the afternoon.

Saturday's program will consist of meetings and round table discussions. The convention will close with a banquet for delegates and visitors in the Copper room of the Student Union, featuring the thirtieth anniversary of Beta Phi as a chapter of Kappa Kappa Gamma. Mrs. Norman Streit is banquet chairman; Mrs. Richard Shryock, speaker, and Mrs. Ralph Fields, toastmistress.

Delegates Expected Today

Delegates are expected in Missoula today and are to be at the chapter house during their stay.

Committee chairmen are Betty Jane Milburn, convention marshal; Jane Pence, publicity; Jane Schuyler, music; Lucie Clapp, stunt; Agnes Robinson, housing; Jean Olson and Helen Hoerning, secretaries.

M Club to Meet Tonight To Plan Annual Picnic

M club will meet tonight in the M clubroom. President Art Merrick urges members to be present to discuss plans for the club's annual picnic and other important business. "Be there," said President Merrick.

SENIORS WILL MEET

All seniors are requested to attend an important class meeting at 4 o'clock this afternoon in the convocation room in the Student Union building, according to Bill Lazetich, class president.

Greek Council Elects Galles As President

Dale Galles, Billings, was elected president of Interfraternity council for the 1939-40 term, at a meeting of fraternity representatives last night. Norman Stortz, Forsyth, is retiring head of the council.

Jack Lynch, Billings, is the new vice-president, and Verne Christiansen, Conrad, secretary, of the council.

After deliberation, a revised constitution was accepted. Several changes have been effected in the new draft which will tend to strengthen the Greek governing body.

Last night's meeting was at the Phi Sigma Kappa house.

National Official Views Changes In Course Here

Miss Susan Burson of the office of education, Washington, D. C., conferred with Miss Helen Gleason, chairman of the Home Economics department, and other staff members early this week on the changes made in the local curriculum in the past year. Miss Leila Massey, state supervisor of home economics, Bozeman, attended the conference.

Miss Burson, who co-operated with the department last year when the Smith-Hughes plan was inaugurated, declared she was much impressed with the progress here.

The regional supervisor is on her way to San Francisco to attend the regional conference next week on home and family life education.

Constitution Is Accepted

(Continued from Page One)

who received 175 votes, is sophomore delegate to Central board, defeating Bill Mufich, with 165 votes.

Pantzer polled 205 votes to Pierce's, 148 in the freshman class, 146 to 121 in the sophomore, 157 to 119 in the junior class and 167 to 150 in the senior class to win by a total of 137 votes.

Freshmen Strong for Williams

Freshmen gave Carter Williams 212 votes to 134 for Jack Hogan. Hogan carried the sophomore class, 144 to 121, and the junior class, 139 to 136. Williams had a 10-vote margin in the senior class, getting 165 votes to Hogan's 155.

Tom Taylor, '34, of the Whitefish Pilot, was a visitor in Missoula Sunday.

DANCE
Friday and Saturday Nights
— at the —
PENGUIN CLUB
To TEX WILLIAMSON'S Music

VOTE TABULATORS AT WORK



Margaret Love (left), Raleigh Kraft (top) and Norman Stortz are shown as they tabulated freshman votes in room 107 of Main hall last night.

Legal Fraternity Elects Officers

Largey MacDonald, Butte, was elected magister of Phi Delta Phi, legal fraternity, at a recent meeting. He was also chosen to represent the chapter at the 1939 national convention at Mackinac Straits, Michigan.

Other officers are Herb Conrad, Conrad, exchequer; Henry Grant, Columbus, clerk; Al Davis, Butte, historian, and Burke McNamer, Shelby, contact man. Davis was also selected as alternate delegate to the national convention.

Delayed Hike Of Foresters To Be Sunday

Forestry club's annual spring hike, rained out last Sunday, will be next Sunday, members decided at a meeting last night. Fifty-one senior forestry students will miss the hike because they left today on their annual trip through the Pacific coast states.

Club members presented Bob Stoebe with a small gold gavel in appreciation of his work as former president.

Meril Carter told of the progress being made in preparing the summer library which provides reading material for students on summer jobs. The club will cooperate with the forest service in furnishing magazines.

Amendments were passed clarifying conditions under which loans may be made from the foresters' loan fund.

Jim Wilson announced that two baseball teams, the Loggers and the Rangers, are ready for intramural competition.

YOU SHOULD BUY

DaCo MEATS

Our prices are reasonable—our meats are fresh.

All Our Products Are Inspected for Your Health

John R. Daily, Inc.

115 W. Front St.
Phone 2181

Branch

Model Market

Phone 2835

Seven Schools Enter Teams For Forensics

Five District Champions, Conrad, Threeforks Speakers Listed.

"The entry list for the Inter-scholastic debate tournament has almost doubled over last year's," James N. Holm, instructor in speech, announced yesterday. "Seven teams have been entered this year, compared to four last year."

Whitefish, western district winner; Great Falls, northern district winner; Lewistown, winner of the central district tournament; Bozeman, from the southern district; Froid, representing the eastern district, and Conrad and Three Forks, two teams to whom special invitations were sent, are the schools who will compete.

After a meeting of the coaches Thursday morning, May 11, at 9:30 o'clock, the first debate will be run off. The final debate will be Friday night at 6:30 o'clock.

Bill Scott, Great Falls, is executive manager of the tournament. Members of Tau Kappa Alpha, national forensic honorary, will judge debates, and students from speech classes will act as chairmen.

DANCE
Every Friday and Saturday
CASA LOMA
BEST MUSIC IN TOWN

\$1 PER WEEK BUYS A NEW TYPEWRITER
— From the —
TYPEWRITER SUPPLY
314 N. Higgins Phone 2323



Susie Couldn't Wait for Daisy

Susie is off for town as fast as she can travel.

You say she is foolish? Not at all; she read an ad in the Kaimin and away she went. She knows money given is value received when you buy from merchants that advertise in the Kaimin.

Heed Susie's example, buy from Kaimin advertisers.

THE KAIMIN