

University of Montana

ScholarWorks at University of Montana

Montana Kaimin, 1898-present

Associated Students of the University of
Montana (ASUM)

1-22-1942

The Montana Kaimin, January 22, 1942

Associated Students of Montana State University

Follow this and additional works at: <https://scholarworks.umt.edu/studentnewspaper>

Let us know how access to this document benefits you.

Recommended Citation

Associated Students of Montana State University, "The Montana Kaimin, January 22, 1942" (1942).

Montana Kaimin, 1898-present. 1925.

<https://scholarworks.umt.edu/studentnewspaper/1925>

This Newspaper is brought to you for free and open access by the Associated Students of the University of Montana (ASUM) at ScholarWorks at University of Montana. It has been accepted for inclusion in Montana Kaimin, 1898-present by an authorized administrator of ScholarWorks at University of Montana. For more information, please contact scholarworks@mso.umt.edu.

Majority Oppose Cut in Holiday Calendar

Campus Poll Discloses Viewpoints

Students Comment On Proposed Elimination Of Vacations

By MARY BUKVICH
Students almost unanimously are indignant about the faculty's proposed plans for eliminating Aber Day and spring vacation. They contend that one day more or less should not make a great deal of difference to the defense mechanism and that spring vacation is necessary to give a few extra days of relaxation between quarters.

Mary Jane Deegan and Jo Webb, both juniors from Big Timber, are in favor of taking spring vacation away, if finals week also would be eliminated. They want finals during regular class periods, thus getting an extra week's vacation.

"I can't see how either would help the university much," was Annetta Grunert's comment. A zoology major, the Butte senior says he fails to see where one or two days would make much difference. "If they asked us to go to school on Saturday to really cut down the quarter, it wouldn't be so bad," she said.

Anne Simms, home economics senior from Ronan, disapproved of both plans. "I don't see that it would help defense in any way." No training vital to defense which would necessitate students' getting out early is offered here, she added.

Jim Hodges, Laurel; Peggy Casto, Anaconda; Jack Mahan, Helena, and Harriet Dillavou, Billings, all of whom are freshmen are especially antagonistic toward cutting out Aber Day. But all of them feel that one week less during summer quarter instead of spring vacation would be an improvement in the system.

Garvin Shallenberger's statement on an elimination of Aber Day was the most radical. "Students ought to walk out. Cutting out Aber Day is a crime." Shallenberger, ROTC second lieutenant from Missoula, doesn't see what good abandoning spring vacation will do, either. "We'll all be going to the army at the same time anyway."

Bill Miloglav, Missoula, and Bill Ballas, Missoula, say that a spring vacation gives many students their only opportunity for raising money for spring quarter fees. Ballas has had only one Aber Day, but he states that he doesn't want another.

(Continued on Page Four)

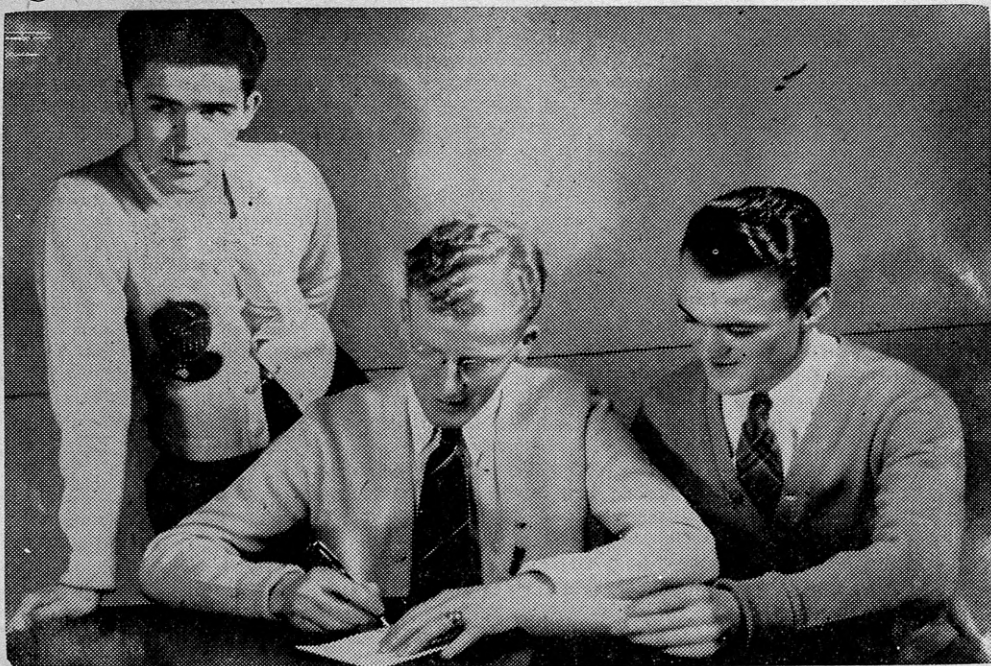
THE MONTANA KAIMIN

MONTANA STATE UNIVERSITY, MISSOULA, MONTANA

Z400

THURSDAY, JANUARY 22, 1942. VOLUME XLI. No. 53

Signs Check



Ray Wise, Great Falls (left) and Sherman Lohn, Helena (right) look on as Scotty MacLeod, Hardin, Chief Grizzly, signs a check donating \$100 to the fund established to raise money for a new scoreboard for Dornblaser field. The check was donated by the Bear Paws, men's sophomore honorary. Wise is Left Paw and Lohn, Right Paw, in the organization.

Recreation Room Opens In Student Union Building

Opening of the AWS sponsored recreation room in the Student Union last night drew more than 75 students who had their choice of dancing, bridge, ping-pong, checkers or chess for entertainment.

Newest use for which the Silver room has been put, the game room will be open from 1 to 6 o'clock and from 9 to 10:15 o'clock on week nights and on week ends when dances are not scheduled, Maribeth Kitt, AWS president, said in announcing hours for the room.

Cyrile Van Duser, Student Union manager, who has cooperated with AWS in planning and furnishing the room, emphasized that it will not be operated for profit.

Miss Kitt said that contribution of checker boards or other games would be appreciated. AWS plans to add more ping pong tables and bridge tables if there is demand for them.

Co-op Association Schedules Dance

The Student Cooperative association, students from both men's and women's co-op houses and the batching students, will have a party in the basement of St. Anthony's parish at 8 o'clock Friday night, Duane Raymond, Malta, president, announced yesterday.

Spurs Prepare For Visit of Bozemanites

Barbara Warden, Roundup, Spur president, yesterday appointed committees to arrange for entertainment and housing of the Bozeman Spurs when they visit Missoula Jan. 30 to see the Bobcat-Grizzly basketball game.

Donna Bertsch, Glasgow, is chairman of the program committee. Marjorie Harrison, Bridger, and Elizabeth Pearl, Missoula, are committee members.

Chairman of the date committee is Marie Murphy, Stevensville, assisted by Lillian Neville, Helena, and Polly Morledge, Billings.

Members of the luncheon committee are Bernice Hansen, Deer Lodge, chairman, Dolores Woods, and Charlotte Toelle, Missoula, and Frances Vranish, Roundup.

Jane Mee, Anaconda, chairman of the housing committee, will be assisted by Marguerite Poore, Butte, and Viola Zimbelman, Brady.

Ski Team Hopefuls Meet Today

Men interested in trying out for the university Ski team will meet in the Central board room at 3 o'clock this afternoon, according to Don Hall, Mullan, Idaho, president.

Recognition of skiing as a minor sport has been so recent that competitors must plan tryouts and schedule meets themselves, Hall said. Funds for transportation to meets have been allotted by Athletic board.

Plans for competition include an intercollegiate meet with the University of Idaho and Washington State College at Lookout Pass, Idaho, a state meet with Montana State college at Bozeman and possibly competing in the Northern Pacific Coast conference meet in the spring.

Melby Addresses 400 Montanans At Banquet

President Ernest O. Melby spoke on the subject, "The University in War Time," before more than 400 Missoula and Western Montana residents at the annual Chamber of Commerce banquet last night at the Florence hotel.

Dr. and Mrs. Melby were honored before the banquet at a reception sponsored by the University Alumni association, faculty members and the university committee of the Chamber of Commerce.

NOTICE

Tau Kappa Alpha will meet at 4 o'clock today in Library 201, President Walter Niemi, Butte, announced yesterday.

University Sets Back Dillon, 57-40

Series to Resume Here Tomorrow Night; Jones, DeGroot Lead Victors

Grizzlies threw back a fighting Montana Normal team last night at Dillon by a score of 57-40 to grab the first game of a series which will resume tomorrow night in Missoula. It was the fifth straight victory for the Grizzlies.

Paced by forwards Bill Jones and Willy DeGroot, the Grizzlies took an early lead and kept out in front for the rest of the game although the Bulldogs several times came within a few points to throw a scare into the visitors. At half-time the score read 29-22.

The smaller Normal team was clearly handicapped by their size which saw the Grizzlies time after time use their height to advantage, particularly under the basket. The loss of Johnny Burgess, who recently joined the Navy, also contributed to their defeat.

Jones led the university scoring with 13 points, closely followed by DeGroot with 11. The rest of the markers were divided among the squad members with every one in the game contributing to the total. G. Aitken led the losers with 14 and A. Deegan chalked up 13.

The series was slated as the best two out of three, so if the Grizzlies win again tomorrow night, no game will be played Saturday. If Normal comes back to take the second game, the third and final tilt will follow.

M. S. U. (57)	FG	FT	PF	TP
Jones, f	6	1	3	13
Clawson, c	1	0	3	2
DeGroot, f	5	1	1	11
McKenzie, g	2	2	1	6
Edwards, g	2	2	2	6
J. Burgess, g	2	1	1	5
Dahmer, c	2	0	0	4
C. Burgess, f	3	0	4	6
Hesser, g	2	0	1	4

Totals	25	7	16	57
Normal (40)	FG	FT	PF	TP
Good, f	1	3	2	5
Kipp, f	0	0	0	0
B. Deegan, c	0	0	2	0
D. Aitken, g	1	2	2	4
Phill, g	0	0	1	0
G. Aitken, f	3	8	4	14
Farrington, f	1	0	0	2
Schultz, c	0	0	0	0
DePuis, g	1	0	0	2
A. Deegan, g	6	1	0	13

Totals 13 14 11 40
Halftime score: Montana 29, Normal 22. Officials: Good (Butte) and Tobin (Butte).

Group to Talk On Religion

Charles McNicol, Great Falls; Jennie Farnsworth, Jack Donaldson, and Hazel Hayden, all of Missoula, will discuss religious problems of today's youth over KGVO at 7:30 o'clock tonight on Campus Congress broadcast, according to James Walsh, Geraldine, chairman.

Choice of Bomb-Proof Companion Left U Males

Picture this setting. It is evening and you are a stranger in a big city. Enemy bombers are approaching and air-raid sirens are screaming. You dash into a small dugout and, feeling quite alone, say, "Gee, I wish someone were here!" A voice in another corner says, "Who for instance?" What would you say?

Would you name a glamour girl like Hedy Lamarr or Lana Turner? Or would your answer be Kate Smith, Dorothy Dix or Mrs. F. D. Roosevelt?

Such has been the problem weighing upon the minds of Pete Kamps, Froid, Kaimin associate editor, and John Campbell, university publicity head.

Today, their personal choices still a matter of debate, the journalists decided to conduct a survey under the auspices of the Kaimin, to determine whom the males of the campus would select as candi-

date for the title of "National Companion in a Blackout."

Ballots will be distributed to all men's dormitories and fraternity houses, and are available to Missoula students and those living in private homes at a table in the Student Store.

"Only men may vote and the candidate must be one of national renown," Kamps said. "We ask that each person cast only one vote, but urge every man on the campus to make a selection. Success depends upon full cooperation of the male student body."

The MONTANA KAIMIN

Established 1898

The name Kaimin (pronounced Ki-meen) is derived from the original Selah Indian word, and means "something written" or "a message."

Published Tuesday, Wednesday, Thursday and Friday during the school year by the Associated Students of Montana State University.

REPRESENTED FOR NATIONAL ADVERTISING BY
National Advertising Service, Inc.
College Publishers Representative

420 MADISON AVE. NEW YORK, N. Y.
CHICAGO • BOSTON • LOS ANGELES • SAN FRANCISCO

Entered as second-class matter at Missoula, Montana, under act of Congress, March 3, 1879

Subscription price \$3 per year

Printed by the University Press

55

Bill Bellingham, Editor
Jack Hallowell, Pete Kamps, Associate Editors
Jehn Saidin, Business Manager

SKI EDITION MADE POSSIBLE BY LOCAL MERCHANTS

Today's Kaimin, which should make interesting reading to every ski enthusiast, is somewhat of an innovation in news and advertising presentation.

Realizing the need for some promotional advertising schemes, the Kaimin business and editorial staffs seized upon the idea of promoting—editorially and by advertising—a great outdoor sport. Almost everyone has experienced at some time or another the thrill of gliding smoothly and effortlessly down hill on a pair of hickories. Many of us have not followed up our initial attempts with as much frequency as we would like. Others have become quite expert by repeated efforts on snow-covered slopes.

To both—the accomplished and beginner—is this edition dedicated. And both will profit by reading the features gathered for this special presentation. Either may learn of a new place to go or pick up a new term.

Whatever you may think of the idea, remember this—it was made possible by the merchants who have tied in so wonderfully with this promotional. Beginner or expert, buy your equipment from them. They have the best.—J. S.

:: Society ::

Dale Burnett and Eileen Thompson, both of Missoula, were dinner guests at the Delta Gamma house Tuesday.

Harriet Dillavou, Billings; Betty Olsen, Missoula, and Mary Jane Deegan, Big Timber, were Tuesday dinner guests at the Theta house.

Sigma Kappa announces the pledging of Anna Jean Hanson, Missoula. Miss Hanson was a Tuesday luncheon guest and Anise Gotschall, Hysham, was the guest of Edith Ward, also of Hysham. Sigma Kappa alumni chapter sponsored a benefit dessert bridge Tuesday night.

Mr. Downen, Chinook, was a luncheon guest at the Phi Delta

house Tuesday. John Davis, Minot, N. D., was a Tuesday dinner guest and Bud Emsweiller, Ekalaka, was a dinner guest Monday night. Dick Nutting, Red Lodge, went to Billings by plane for the week-end.

Gordon Wolfram, Armstead, pledged SAE Monday night. Dave Christiansen, Missoula, was an SAE dinner guest Tuesday.

Theta Chi entertained Harold Myklebust, Missoula; Dick Miller, Butte; Bill Swartz, St. Xavier, and Milton and Lloyd Jeffers of Hardin at dinner Tuesday.

John Davis, Minot, N. D., was a dinner guest at the Phi Sigma Kappa house Monday night.

Ben Tyvand, Butte, and Bill Mlynec, New York City, were Tuesday night dinner guests of Sigma Chi. Lieut. Hammit Porter of Stevensville and Lieut. Elmer

Coffey Cautions Crackers To Be Careful, Cunning

By JERE COFFEY

Before you grasp the ski pole firmly in hand and attempt to break your neck in the manly art of modified murder by descending that hill, you should check your knowledge of the lesser known tricks and terms of skiing.

You and I, the novice skiers, are commonly termed by professionals of the sport as "scissor bills" and "crackers." One of the first tricks of the trade we are likely to attempt, is shussing, or running a steep field without checking. The latter plan is recommended "for idiots only" in a modern ski manual. A check is simply to provide a method of decreasing speed, which is usually advisable for a happy ending.

Words Explained

If you like rhythm, enjoy a good poker game or wear clothes with discrimination, probably you think you know all about tempos, flushes and sox. But the ski artist has a different conception.

Tempo refers to a high speed turn which utilizes a forward lean of the body; a flush is a series of closed gates in a slalom race; sox are canvas climbers.

A gate is not a devotee of swing music, but merely a pair of flags through which a race course runs.

For settling down comfortably at the bottom of a precipitous hill, the skier recognizes two kinds of snow. Corn snow is recognized as large granules of icy snow not recommended for a three point landing. Most desirable settling ground, or powder snow, is dry and light—just the thing for a graceful finish.

Ever hear of a gelaendespring? This two-dollar word signifies a trick easier to perform than pronounce. The gelaen—or whatever they call it, is a jump over an object with the aid of a pair of ski poles.

Wag Is Turn Series

Don't think a tail wag refers to your dog's favorite pastime. Ski enthusiasts know it as a series of Christiana turns. The turn, a skid based on a single stem twist, utilizes a down-up-down body movement.

That vision you wish you didn't have to behold, skiers call a schuss.

Crabb of Sheridan, Wyo., have been visiting the Sigma Chi house. Daniel Dykstra, Helena, will leave for Denver Friday. Sigma Chi staged a smoker last night.

Butch Hudacek, '41, and the Libby basketball team stayed in Corbin hall Saturday night. The Libby boys, who came to Missoula, were Cal Herzog, Joe Happlegate, Bob Bryst, Wayne Delzer and John Friend.

DOROTHY GRAY



•Dorothy Gray BLUSTERY WEATHER LOTION—grand help against chapped hands, face! A smooth powder base, body-rub. Stock up now. Double value!
"A GOOD PLACE TO TRADE"
Peterson Drug Co.
232 No. Higgins Ave.

NOTICE

Dick test material for determining immunity to scarlet fever is now available at the Health service every Monday until the supply becomes exhausted, Doris Rankin, technician, said recently.

More than 10,000 University of Texas men take part each year in the school's program of intramural sports for "average athletes."

ROGERS' CAFE

118 W. Broadway

Good Food
Moderately Priced

If You Appreciate THE BEST

Next Time
Try the

New Florence Hotel
Barber Shop
JOE SAUNDERS

LUNCHY APPETIZERS!

Pecan Crisps
An Every Wednesday Special:
Potato Doughnuts

STANTON BAKERY
529 South Higgins

A HOSIERY SPECIAL FOR COEDS

Sheer, chiffon genuine crepe Gaymode stockings! Full fashioned, ringless and splashproof. In 2-3-4 threads. Sizes 8½ to 10½

\$1.19

ALL IN BEAUTIFUL FALL SHADES—

Cocobark Black Rhythm Sky Dust Suncharm
Wine Riosun Rustcana Honeycomb Bali Beige

PENNEY'S

GAS UP WITH TEXACO FIRECHIEF

—AT—

Stan Smart's  Texaco Station

FOR THAT SKIING TRIP NEXT WEEK-END!

If you can't ski like an expert, at least you can dress like one!



SKI SUITS

Botany Wool, with reversible jackets, in navy or green —\$13.95

Gabardine, fleece-lined, in royal blue, brown or wine. One-third Off.

Poplin, water-proof, in a variety of colors. One-third Off.

Separate Ski Trousers

Poplin or gabardine in popular streamlined style. Trousers have either elastic cuffs or straps to go under the foot. Cadet blue or navy.

\$6.95 and \$9.95 — Reduced to
\$4.63 and \$6.63

Cummins
STORE FOR WOMEN

SAVE...

for Defense by
cooking with

GAS



Montana-Dakota
Utilities Co.

Sig Alphas, Phi Delts Take Intramural Games

Sigma Alpha Epsilon trounced Mavericks, 32 to 13, in the first of last night's intramural basketball games and Phi Delta Theta laced Sigma Nu, 38 to 15, in the second before the biggest crowd this season.

SAE had little trouble defeating the Mavericks, whose aggressiveness and spirit was not enough to overcome the Sig Alphas accurate shooting. SAE led 15 to 6 at the half. Wedin, forward, and Don Gray, center, garnered 11 and 7 points, respectively, for the SAE's. Elliott, Maverick forward, led his teammates with seven counters.

In the second game, Phi Delta Theta took an early lead and maintained it throughout the clash as they outplayed a scrappy Sigma Nu squad. Accurate shooting and brilliant ball-hawking put the Phi Delt's out in front with a 19 to 4 lead at half-time.

Larry Potter, PDT, was high-point man with four field goals and three free shots. Harold Gar-naas, Phi Delt forward, followed a close second with eight tallies. Tony DiRe and Bill O'Donnell, Sigma Nu mainstays, sparked for the losers both defensively and offensively. Both chalked up four points.

Phi Delt's increased their lead 28 to 8 during the first five minutes of play of the second half. O'Donnell and DiRe each converted two points then Stephens and Potter chalked up several counters.

In tonight's games Sigma Alpha Epsilon will clash with Sigma Phi Epsilon at 7:30 o'clock and Sigma Chi will meet Mavericks at 8:30 o'clock.

Himsl Elected Club Treasurer

Home Economics club members last night elected Lea Himsl, Missoula, treasurer for winter quarter to succeed Margaret Thrasher, Missoula, who is not in school this quarter.

Committees appointed for the annual home economics - forestry party this Saturday include Ethel Campbell, Big Sandy, in charge of arrangements; refreshments, Ann Simms, Ronan, Rosemary Jarussi, Red Lodge, and Hazel Haydon, and Betty Flaherty, both of Missoula; and service committee, Jean Casto, Anaconda, Betty McConaha, Browning, and Clarissa Olsen, Missoula.

Patronize Kaimin Advertisers

War Postpones Development Of Ski Bowl

Defense Effort Delays Work On Local Skiers' Project

By ANN CLEMENTS

Seven years of work became seemingly hopeless and Missoulians' dream of creating a second Sun Valley in the Rattlesnake mountains was shattered when the United States declared war upon Japan.

High in the Rattlesnake mountains, seven and one-half miles northeast of Missoula, lies the Marshall Bowl area, regarded by many Western Montana skiing enthusiasts as potentially the best ski area in the Northwest. The Missoula Ski club, in cooperation with district 1 of the U. S. Forest Service had hoped to develop this area for the winter of 1941-42.

Bob Severy, sophomore and president of the Missoula Ski club, is largely responsible for the plan for the development of Marshall Bowl. When Severy was elected president of the club in March, 1941, the means to obtain this great ski area became a reality.

Saw Possibilities

In 1936 Dr. Edward Little, former professor of physics at the university, and Craig Smith, of the high school mathematics department, had realized the potentialities of Marshall mountain.

Smith and Little attempted to do something about the naturally formed winter sports area but found it impossible to interest the unenthusiastic Mountaineers, Missoula organization of skiers and mountain climbers.

During the winter of 1937-38.

Students . . .

If you need time and don't have it, get your watch repaired at

Fred Nicolet's Jewelry

All Work Guaranteed

106 E. Broadway

400 members of the Missoula Ski club attempted the exploitation of Marshall Bowl and failed because the Forest Service would not build the necessary roads.

Publicity Begun

Under the leadership of Severy and the Ski club, publicity campaigns in local newspapers were started. Skiers began weekly excursions into the bowl. Opportunity arrived suddenly on March 21 in the person of Robert Manahan of the Department of education and photography at Washington, D. C., who took pictures of the bowl.

He returned, gave an illustrated lecture to ski enthusiasts, explained the policy of the Forest Service in other areas and possibilities for the development of the bowl in a similar manner.

E. H. Myrick of the Forest Service announced that everything possible would be done to complete a road into the bowl. The Ski club was jubilant.

County Road Started

Missoula county construction crews finally began the road. Last quarter Myrick finally gave the official Forest Service okay. Severy, returning from the National Ski association meet, reported army interest in locating ski patrol training bases in the bowl. Marshall Bowl was no longer a dream.

But the nation at war canceled

LaTrielle Leads Cubs in Scoring

Bob LaTrielle, Cub forward, leads 11 teammates for high individual scoring honors in city league play, according to figures released yesterday by the coaching staff.

LaTrielle, with 78 counters, holds more than a 2-1 advantage over his nearest competitor, Chuck Sullivan, who has tallied 33 points.

Computation made from the first seven games in league competition determines ratings of the squad roster.

Coach Alex McLain recently cut the team to 12 members. Points scored by squad members:

Player	Points
Bob LaTrielle	78
Chuck Sullivan	33
Dick Bowman	32
Vic Dikeos	30

the bowl developments, yet Missoula ski enthusiasts are still hoping competitive ski meets will be staged in the Rattlesnake mountains when the war ends.

GOING SKIING?

Have an early breakfast at the TOWN TALK — or stop in and warm up on the way back.

THE TOWN TALK

Richard Stegner	27
Howard Jacobsen	22
Barney Berger	21
Rial Cummings	18
Bob Downen	18
Elwyn Mateka	12
Bob Cramer	7
George Eichorn	6

Come in and have a Sample!

Extra Delicious

Home-Style Candies

49c per pound

1/4 Pound FREE With Each Full Pound Purchased

FLORENCE HOTEL PHARMACY

"Prescriptions are the most important Part in Our Business"



MISSOULA BOWLING ALLEYS



SKIING
Was Never Better
—and Prices Never Lower
for the BEST Equipment!



Skis \$9.50 | Wax 50c
Poles \$2.00 | "M"aroon Caps 75c
Boots \$7.00 | Ski Sox 25c
Harnesses \$2.75 and \$4.75



Skis Rented

\$1.50

For the Week-end

\$1.00

For One Day



Associated Students' Store

STUDENT UNION BUILDING

SKIERS!

FREE MOVIE SHOW

Thursday Night, January 22, 7:30 P. M.

All ski enthusiasts in Missoula are cordially invited to attend this interesting and entertaining show . . . There is no admission charge, so come early if you want to get a seat!

PICTURES:

"AMERICA TAKES TO SKIS"

"SKI ESTA"

"WINTER HOLIDAY"

ENTRANCE AT SHOE DEPARTMENT—On Front Street

The MERCANTILE

MISSOULA'S OLDEST, LARGEST AND BEST STORE

Missoula Area Beckons U Skiers

Good Snow, Improved Courses Nearby Provide Winter Paradise

By VERNON SPENCER

Skiing this winter has been the best since 1938, according to reports from university students who have made trips. The mountains are covered with dry, powdered snow and most of the ski courses have from four inches to a foot on runways.

There is more good snow for skiing near Missoula than at Sun Valley at the present time, and consequently December and January have been very busy months for skiers, Bob Severy, Missoula Ski club president and secretary of the Rocky Mountain Ski club, said yesterday.

Pattee canyon, Diamond mountain and Marshall Bowl are the best ski courses in the immediate Missoula area.

Pattee Canyon ski course, six miles east of Missoula, was recently broadened and leveled off by the United States Forest service. It has a solid, hard-packed runway of approximately 1,000 feet. Pattee Canyon is reached by following Higgins avenue south. The highway is well marked by "Ski Club" signs.

The Diamond Mountain run, 25 miles up the Blackfoot road toward Seeley lake, is an excellent course with two "rope" type lifts in operation. Diamond Mountain has a two-mile runway which offers ample opportunity for speed.

Bowl Is Best

For cross-country skiing Marshall Bowl is perhaps the best in Montana. The runway covers six miles of well packed snow; however, there are no lifts in operation this winter. To reach Marshall Bowl follow the highway four miles east towards Bonner and then turn off on the Marshall Gulch road for five miles. The last few miles to the runway must be made on foot.

Three ski courses farther from Missoula are Gibbons Pass, McDonald Pass and Lookout Pass. Gibbons Pass, 98 miles on highway 93 towards Salmon, Ida., provides two lifts and an excellent ski run of 1,500 feet.

Lookout Pass, 108 miles west of Missoula towards Spokane, Wash., on Highway 10, has three lifts in service. The runways vary from 800 to 3,000 feet.

MacDonald Pass, 95 miles east on Highway 10 towards Helena, has one chair-lift, and the course is lighted for night skiing. The runway is 1,800 feet. Most ski courses have only the rope lift which the skier holds onto while being pulled up the mountain slope. MacDonald Pass is unusually well equipped in this respect by having the "T" bar (chair type) lift, Severy said.

Diamond Mountain, Pattee Canyon and Lookout Pass are the best courses for beginners. They have runways which are both long and short, depending upon the agility and technique of the skier.

Two Courses Have Lodges

Two of the ski-runs have warming houses. The United States Forest service built a \$5,000 log ski-lodge at Lookout Pass last summer. The lodge features a large lounge, lunch counter, rest rooms and locker rooms.

MacDonald Pass has a log ski-lodge with one large room equipped with heating stoves, benches and a lunch counter.

Gravity, friction, and centrifugal force are the basic principles of skiing, speed is the greatest thrill and control is the art, Severy said.

Poll Conducted Of Student Viewpoints

(Continued from Page One)

Ron Schultz, Big Timber, and John Lhotka, Butte, both seniors, and Betty Jarmen, Ventura, Calif., would eliminate spring vacation and Aber Day. Spring vacation isn't long enough to be a real vacation, they contend, and Aber Day isn't accomplishing any useful purpose.

"The proposed change isn't worth anything," Phyllis Miller, Conrad, stated. "A week doesn't make enough difference," she says. "If it were a month or so, the plan would be fine."

Jack Buzetti, Hardin, doesn't like either idea. "If we're going to be drafted this summer, I'd be more than happy to stay that extra week." He doesn't believe that students will give much cooperation to the plan.

"I think cutting spring vacation is a good idea, but I think we should have Aber Day," Bill Mather, Lewistown, said. Mather believes that Aber Day could be just as effective if students lunched at their own houses and spent no money for entertainment or a campus lunch.

Ruth McLeod, Gallatin Gateway, and Peggy Shannon, Missoula, feel that much of the value of college comes from traditions and that much will be lost if Aber Day is abolished. Both are unbiased as to changes in vacation schedules, as is

North Carolina University Honors Former Students

Kai Heiberg, '37, English, has been granted a Rockefeller foundation fellowship at the University of North Carolina, Chapel Hill. The fellowship amounts to \$500 and tuition for each of two years.

Mr. Heiberg, who will work for his master's degree, is studying under Paul Green, Broadway playwright. Heiberg specialized in dramatics at the university.

Lindh Speaks To Forestry Club Members

Axel Lindh, fire chief for region 1 of the United States Forest service, last night told Forestry club members of problems in fire protection for next summer and plans to meet increased complications.

Expansion of student fire camps, blister rust camps and parachute squads have been proposed, Lindh said. During the extreme fire danger periods, married couples may be hired to act as lookout and smokechaser combinations, he added.

Sentinel pictures were taken and several committee reports read.

Three home economics majors plugged a party to be given Forestry club members Saturday night by the Home Economics club.

Treasurer Gordon Holte, Lambert, read the final resolution about the purchase of a defense bond with loan fund money.

Frank Busch, senior from Missoula.

Ben Tyvand and Eso Naranche, both of Butte and Karl Fiske, Outlook, all of whom are Grizzly football players, think that men especially need the recreation of Aber Day and spring vacation during this time of war.

Of 78 students interviewed, 53 opposed the proposed change, 13 failed to express an opinion and 12 were in favor.

Porter, Pfohl To Discuss Civil Defense

Enoch Porter, Great Falls, and Scott Pfohl, Livingston, will discuss organization of civilian defense over KGVO at 4 o'clock today, according to Ralph Y. McGinnis, assistant professor of speech.

Porter and Pfohl are speaking on the Defense Bulletin board program sponsored by the National Defense Speaker's bureau. Defense Bulletin board programs are scheduled twice weekly on Tuesdays and Thursdays beginning Jan. 28, McGinnis said.

NOTICE

Phi Sigma will meet tonight at 7:30 o'clock at the natural science building for the annual sleigh-ride. A fee of 25 cents will be charged each person.

Sentinel editorial staff will meet in the Sentinel editorial office at 4:30 o'clock today.

NOTICE

M club will meet at 7:30 o'clock tonight, President Tom Duffy announced yesterday.



Attention, SKIERS!

Barthel's have the best in Skiing Equipment.

Hickory Skis\$5.95
Cable Bindings\$1.69
Steel Poles\$6.95
Cane Poles\$1.48

BARTHEL'S

Ski in Style in Clothes from Buttreys



Ski Jackets
from\$6⁹⁵

Ski Suits
from\$14⁷⁵

Ski Trousers
from\$4⁹⁵

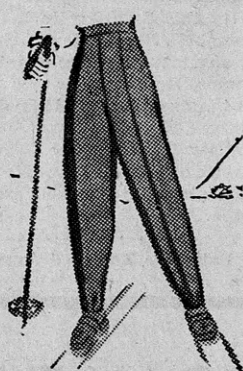
Sweaters
from\$2⁹⁸

Parkas
from\$1⁰⁰

Sno Boots
from\$2⁹⁸

Knee Sox
from79^c

Gloves and Mittens
from89^c



"MISSOULA'S FRIENDLY STORE FOR WOMEN"

Buttreys

220 NORTH HIGGINS

"Where Smart Fashion Is Less Expensive"

THE STORE FOR MEN

Attention, Skiers!

THE HUB

Carries a Complete Line of ...

Ski

- Jackets
- Caps
- Visors
- Waxes
- Socks
- Shoes
- Gloves



George Howard Says Skiing Was Perfect at Gibbons Sunday!

THE HUB

GEORGE T. HOWARD