

University of Montana

ScholarWorks at University of Montana

Montana Kaimin, 1898-present

Associated Students of the University of
Montana (ASUM)

10-19-1945

The Montana Kaimin, October 19, 1945

Associated Students of Montana State University

Follow this and additional works at: <https://scholarworks.umt.edu/studentnewspaper>

Let us know how access to this document benefits you.

Recommended Citation

Associated Students of Montana State University, "The Montana Kaimin, October 19, 1945" (1945).

Montana Kaimin, 1898-present. 2111.

<https://scholarworks.umt.edu/studentnewspaper/2111>

This Newspaper is brought to you for free and open access by the Associated Students of the University of Montana (ASUM) at ScholarWorks at University of Montana. It has been accepted for inclusion in Montana Kaimin, 1898-present by an authorized administrator of ScholarWorks at University of Montana. For more information, please contact scholarworks@mso.umt.edu.

THE MONTANA KAIMIN

Montana State University, Missoula, Montana

Z400

Vol. XLV.

Friday, October 19, 1945

No. 6

Contest for Trip to Limey Schoolhouse Open Again For Brain Trusts — Burley

Carlson —Page Three

You Vote for My Candidate, I'll Vote for Yours; Campus Machines Warm Up

Page Two

Pink Tea Editors Scream For Clarification Of Social Calendar System

Schmidt and Engelking —Page Six

Grizzlies Invade to Drive Vandals From Moscow; Scribe Picks Montana

Weston —Page Five

Will the Associated Students Be in the Hole Next June?

How Far Will \$700 Go?

See Page Four

Special Election Next Week

Senior Delegate to Central Board to Be Named; Frosh Elect Permanent Officers

Central Board meeting last Tuesday set Thursday, Oct. 25, as the date for fall elections. The elections will take place in the Student Union from 5 to 6 p. m. Nominations, to be made from the floor, will begin at 5:15 p. m.

Freshmen will meet in the Gold Room, juniors in the Bitterroot Room and seniors in the Eloise Knowles Room.

Members of Central Board will count the ballots. Jane Jeffers, Ennis, ASMSU president, is taking precaution to see that the elections are run off satisfactorily. "We are trying to avoid the mistakes made last year," she said at the Tuesday meeting.

The elections have been called in answer to petitions from the presidents of the Junior and Senior classes. The elections will fill the offices of treasurer of the Junior class and senior delegate to Central Board. These vacancies were created when Marion Gilliland and Rudy Sackett did not return to school this fall.

Sackett was the two-year delegate to Central Board. The person elected to fill her office will serve out the remainder of her unexpired term.

Freshman class elections will be held at the same time. Freshmen elected temporary officers earlier in the year, now they will elect permanent class officials.

Miss Jeffers expressed hope that a truly representative number of students will turn out for the fall elections.

Williams Elected WAA Treasurer

Enid Williams, Butte, defeated Alice Anderson, Billings, in the election Wednesday to become the new WAA treasurer.

Enid, a junior, has been active in all WAA activities for the past two years. She is playing on the New Hall team and played for them last year when they won the basketball cup.

When You Were Young and Gay THIRTY YEARS AGO

Sigma Nu Fireside

A number of Sigma Nu men were hosts at a delightfully informal fireside gathering on Sunday evening. Toasting marshmallows supplemented by conversation and music, made the hours pass most enjoyably.

With Miss Dennis

Miss Eunice Dennis was at home informally to a few friends on Sunday evening. The evening passed pleasantly with music. Miss Dennis served dainty refreshments.

Sophomore Dance

The class of 1917 entertained at a most successful dance in the gymnasium on Friday evening. The freshmen, who were honor guests, were bidden by clever notes in German. The same idea was carried out in the attractive programs. Excellent music was furnished and punch was served.

Forest Club Meeting

The regular meeting of the Forestry Club was held on Monday at the home of Dean Skells. Short talks were given. After the program came the usual feed and

ATTENTION

Come to the Sentinel office in the Student Union building any time this week to sign up for your picture in the Sentinel.

Ellis Studio will take them. You get four poses for \$1. Any retakes will be an extra dollar. Be sure to return your proofs within three days of receipt. Ellis reserves the right to choose the print if the proofs are not returned within that time.

Girls, please wear white V-neck blouses; boys should wear white shirts and dark ties.

It is the thing to do—have YOUR picture in the 50th Sentinel published at Montana State University.

Idaho Game to Be Broadcast From Spokane

The MSU-Idaho football game will be broadcast over KGA, the American Broadcasting Company station in Spokane. The broadcast will start at 3 p. m. Missoula listeners can pick up this station at 1510 kilocycles.

general good time.

Tent Classrooms

The Montana School of Journalism and its tent classrooms are attracting the attention of the contemporaries of the local institution. "The Editor and Publisher," a newspaper trade magazine, gives the Montana school considerable space in its current issue. The article sets forth the plans and purposes of the school and is illustrated with pictures of the tent classrooms and of Prof. A. L. Stone.

ASUM Dance

The ASUM dance on Friday evening in honor of the football teams proved to be an enjoyable affair. It was regretted that a comparatively small number of the Bozeman people were present, owing to the early departure of their special train. The university was well represented. Excellent music was furnished by the Sheridan brothers. The dance was a non-program affair and was delightful in its informality.

MSU TALKS TO YOU

Tune in to KGVO

1290

Every Thursday at 5 p. m.



Veterans Won't Organize Unless Need Arises; McCain, Miller Address Meeting

By JOHN R. BRUNETT

Ski Club Sets Yearly Dues

The MSU Ski Club met last night and decided to charge a \$5 membership fee. The club also discussed plans for their dance Nov. 3 in the Gold Room.

Plans to bring a ski instructor to MSU were revealed by Otto Ost and George Savage, co-presidents of the organization. Ost will go to Whitefish this week end to begin negotiations.

"There is still plenty of time for anyone interested in joining the club to sign up," Savage said.

The decision to charge \$5 membership fees was made with the view to reducing them in time. The fee must be high at present because the club must purchase equipment.

Mrs. J. A. McCain To Be Honored At Reception

Mrs. James A. McCain, wife of MSU's new president, will be honored by the Faculty Women's Club of Montana State University at a reception next Monday.

The reception will be held in the lounge of the Student Union building from 3 to 5 in the afternoon.

The Faculty Women's Club extends a cordial invitation to all women's organizations in Missoula, to mothers and wives of students, and to university alumnae to attend this tea and meet Mrs. McCain, the wives of new professors, and the new women faculty members.

WANNA GO TO THE GAME?

The management of the Farragut team has sent a special invitation to all MSU students to attend the Farragut game next Friday, Oct. 26. Admission to the game is free. They would like to know in advance approximately how many students are coming so meals can be provided. All students interested see Anne Reese in the Student Union office immediately.

NOTICE

Tryouts for 1945-46 cheer leaders will be held at 7:30 o'clock Wednesday night, Oct. 17, in the Copper Room of the Student Union.

THIS WEEK'S HIT

"Twilight Time"

Jimmy Dorsey

HEFTE'S

FOR A LASTING IMPRESSION

Take or Send Candy from the

Pallas Candy Co.

Veterans voted against the formation of a campus organization in a meeting with President James A. McCain and other members of the faculty in the Bitterroot Room of the Student Union Building, Wednesday.

After a thirty-minute debate, veterans decided by standing vote, that a formal organization was not necessary.

Earlier in the meeting, President McCain said of the housing shortage, "I know of nothing that could be done, which we are not now doing."

The president also read to the veterans a letter sent to Senator

COMMUNITY CONCERT—

The Columbia Opera Quartet will present the first Community Concert program of the year Friday, Oct. 26, in the Student Union Auditorium, at 8:15, Marvin Porter, chairman of the Community Concert programs, announced recently.

This year only 500 seats will be available to students on the campus. Tickets may be secured at 1 o'clock on Thursday, Oct. 25, from the Student Union office by showing your activity card. Both must be presented at the auditorium.

NOTICE

Any student now in residence who has been taking a correspondence course during the past year and has not completed the work, should stop in the Extension Office, Main Hall.

NOTICE

Women who are interested in umpiring or keeping score for the various fall sports are asked to see Mrs. Ruth Greenfield in the Women's Gym or Jo Ann Blair, WAA president. Participation credits may be earned in this activity.

MSU students attending the Idaho game in Moscow tomorrow can enter on their Montana ASMSU activity card.

Harold Micklebust, ex-'44, of Missoula, visited the campus this week. Micklebust is on extended army leave, after serving in Europe for many months. He plans to return to the university after his discharge.

SOIL OFF CLEANS PAINTED SURFACES Easy as Dusting

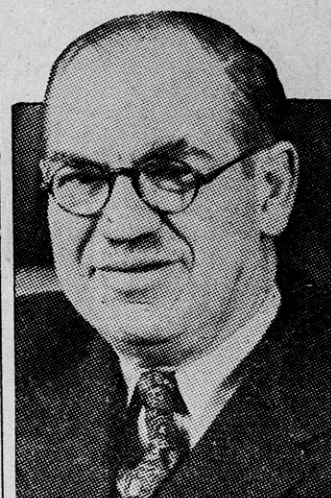
Go to BARTHEL HARDWARE And ask for demonstration on how easy it is to clean painted surfaces with no water, no rinsing, no drying. Will not hurt the finest paint or your hands. Get a bottle from BARTHEL'S and you will say "Work is Play the Soil-Off Way."

GABERDINE SHIRTS

Pre-war quality and style. Matched pearl 3-button cuffs, 2 flap pockets, pleated back. Assorted colors

\$4.95 to \$9.85

DRAGSTEDT'S
"Everything Men Wear"
OPPOSITE N. P. DEVOI



DEAN J. E. (BURLY) MILLER

Burton K. Wheeler, Democrat of Montana, informing the senator of the need of prefabricated houses at the university.

Dean J. Earle Miller, chairman of Veterans' Education, said in a speech introducing President McCain that townspeople are not cooperating with the university by keeping his office posted on available apartments.

Dean Miller called and managed the meeting. Jerry J. Shanley '49, majoring in law, presided over informal discussion on the possibility of a veterans' organization. Future meetings will be held when problems pertaining to all veterans arise.

For that extra lookable value at likable prices, shop for gifts at

B & H JEWELRY
Corner Higgins & Main

Rhodes Scholarships Competition to Be Renewed This Year

BY ALCYON CARLSON

The first elections for Rhodes Scholarships since the outbreak of the war will be held in December, 1946.

The announcement was made today by Dean "Burley" Miller, chairman of the campus' Institutional Committee for Rhodes Scholarships as it stood before 1940.

"Montana has had a remarkably high representation of Rhodes scholars in the past. The men on this campus can be thinking about entering in the competition before long," suggested Dean Miller.

In addition to the regular Rhodes scholarships given before the war cancelled the program at Oxford, a limited number of War Service Scholarships will be offered for men meeting the eligibility requirements. Men who have either served in the armed forces or have done civilian war work such as scientific research education and government service or have held war-time industrial or agricultural positions may become candidates.

Requirements for admittance to Oxford as a War Service scholar will be the same as for the Rhodes candidate except in age, marital status, and amount of college work. According to tentative plans, 32 War Service Scholarships will be offered annually for two or three years.

Statistics show that Montana is among the 10 states which send the largest number of men to Oxford in proportion to their population. Reverend George Barnes, the first Rhodes Scholar from Montana was an alumnus of Montana State University. Montanan Clarence Streit of "Union Now" fame, also an alumnus, was a Rhodes man. Dr. Harold G. Merriam, a representative at Oxford from Wyoming, is the one Rhodes Scholar now on the campus.

In 1902 the Rhodes will created the American Rhodes Scholarships for men who showed promise of leadership in their field and who might prove pub-

lic spirited with incentive to "further the general welfare." The original requirements were (1) scholastic achievement; (2) character; (3) interest in fellow men and an instinct for leadership, and (4) proficiency in outdoor sports.

Although the proceedings and requirements have been changed to fit American needs since 1902, "the first qualification for a scholar—is that he should be first in something," according to Frank Aydelotte, American secretary to the Rhodes trustees.

Rhodes Scholars are chosen annually from candidates of every state in the union. All the states are divided into districts of six states each. Candidates from Montana State University will compete with others from the colleges and universities of Washington, Oregon, Idaho, Wyoming and North Dakota. After candidates from the districts are eliminated, twelve scholars remain to represent their states at the University of Oxford.

"The record for the American Rhodes Scholars in the honor schools at Oxford approaches the record of Englishmen who win open scholarships and the American record is better in first and second classes taken together," reports Aydelotte.

All men interested in further information on requirements, eligibility and other procedure should contact either Dean Miller or Dr. Merriam.

Committees Appointed By Jeffers

The ASMSU president's office has announced the following appointments:

To Convocations committee — Connie Rachac, Jan Kelly and Frances Gall.

To Outside Entertainment committee — Louise McKenzie, Lois Ibsen and Vern Hamre.

To Publications committee—Dot Davis, chairman; Bob Switzer, Harris Hogan, Ruth Olcott, Helen Brutsch and Lee Atkinson.

These appointments were confirmed by Central Board Tuesday.

Betterment Committee Will Meet

The Student Betterment Committee will meet every other Tuesday to hear ideas and complaints.

The committee is recognized by Central Board and its recommendations are passed on to the president's office.

Leota Halter, senior class president and chairman of the committee, has called the first meeting for Tuesday, Oct. 23, in the Bitter-root Room of the Student Union.

Miss Halter explained that all students are encouraged to attend and present suggestions for general student betterment.

The Home Economics taffy pull will be held Tuesday, Oct. 23, at 4:30 p.m. in the foods laboratory.

Pill Rollers Plan Pledging

Kappa Epsilon, women's national pharmaceutical honorary, held its first meeting of the fall quarter Thursday night, Oct. 11.

Plans were discussed concerning the pledging of new members. Betty Barry presided.

Kappa Epsilon has provided furnishings for a room in the basement of the Pharmacy-Chemistry building, with hopes of using it as a women's lounge.

Classified Ads

FOR SALE—Gray broadtail, 3/4 length fur coat, size 14, \$40. Call or see after 6 o'clock. Phone 3584. 542 Eddy avenue.

THE KAPPA Alpha Theta pledges invite all Sorority and Fraternity pledges to a "Jo & Josephine" College Dance at 333 University avenue, from 8 to 5, Saturday afternoon, Oct. 20. (Dress in sports clothes.)

ADVERTISE IN THE KAIMIN

Classified Ad Section

For Sale, Lost and Found, Help Wanted, etc.

Call Madge Schreiner at Kaimin Business Office between 1 and 4, Tuesdays and Thursdays



He's in a gloom because he's too broke to take his girl to the

MONTMARTRE CAFE

but then he'd hock the family jewels to get to dance to Heine Eisen's Nova-chord music



Safe Milk Pasteurized

COMPARE THE FLAVOR

At Your Store or Delivered To Your Door

GARDEN CITY DAIRIES

122 W. Front St.

Phone 4108

Looking for Someone? Well, have you tried the

Drive Inn Drug



Florsheim

FRENCH TOES

Sleek good looks sell the first pair—

Perfect fit and comfort make wearing Florsheim French toes a habit

Exclusively at



Filipino Girl Guerrilla Leader

Captain Julia dela Calzada Peters

Member of MacArthur's Intelligence Staff

Will lecture

Monday Evening, Oct. 22

at 8 p.m. in the

Student Union Theater

General admission, \$1.00

Student admission, 75c

Sponsored by the

Active Club of Missoula

The MONTANA KAIMIN

Established 1898

The name Kaimin (pronounced Ki-meen) is derived from the original Selish Indian word, and means "something written" or "a message."

Published every Tuesday and Friday during the school year by Associated Students of Montana State University

Subscription Rate \$1.50 per year
 REPRESENTED FOR NATIONAL ADVERTISING BY
National Advertising Service, Inc.
 College Publishers Representative
 420 MADISON AVE. NEW YORK, N. Y.
 CHICAGO • BOSTON • LOS ANGELES • SAN FRANCISCO
 Printed by the University Press 56

Entered as second-class matter at Missoula, Montana, under act of Congress, March 3, 1879

ROBERT C. BLAIR.....	Editor
AGNES REGAN.....	Associate Editor
ALICE DRUM.....	Business Manager
SHIRLEY SUE BROWN.....	Advertising Manager
ALCYON CARLSON.....	Circulation Manager
JOAN ENGELKING and MARY SCHMIT.....	Society Editors
DON WESTON.....	Sports Editor
DAVE MARTIN.....	Copy Desk

What Ya Gonna Do When Ya Money Runs Out?

In the past we have enthusiastically supported the expenditure of ASMSU funds for dances. At present we would tend to be a bit more cautious. Our change of stand is proportional to the change in the financial condition of ASMSU. Last year the association had money; this year it does not.

The question arises: can the association rightfully afford to underwrite a student mixer to the tune of \$75 when they have little over \$700 on which to operate the remainder of the year? We think not. We suggest that the Social committee of ASMSU devote a greater amount of time in encouraging existing organizations, sororities and fraternities in particular, to sponsor all-university social functions which would relieve the association of financial expenditure. The newly formed Ski Club is undertaking just such a thing on Nov. 3, i. e., a dance financed by the club and open to all students.

More of these independently sponsored dances should be encouraged. It is the duty of the Social committee to provide social functions. The present committee seems ready and willing to execute this duty. We believe, however, that under the existing financial limitations, this committee must seek and find ways of getting dances, picnics, etc., which will not drain our already destitute student association.

What We Mean by "Chapel"

In announcing our "blueprint" for the proposed university chapel, we called for student suggestion. Tuesday night we got some when we attended a meeting with students interested in the formation of a Christian organization. We argued long and, at times, rather heatedly. These people could not fathom a chapel of the kind we proposed. Frankly, we did not expect them to. We made it plain that "our" chapel would be based more on quiet beauty and a deeper appreciation of ethereal things and less on hell-fire christianity. We told them that we do not intend to build a chapel for proselyting fanatics. We emphasized that the chapel would be designed to appeal to that great mass of students who probably are not ardent churchmen but who nevertheless feel that religion has some part in daily life.

One thing was suggested at this meeting that did appeal to us very much. A veteran present, we don't recall his name, suggested that the chapel be built as a memorial to Montana men who were killed in the war. We think the idea worthy of consideration.

There is still much to be said on this subject. The invitation to discuss it with us still holds. The invitation to work with us in seeing the thing through is extended once more.

A Tip to the 1946 Aber Day Manager

At the Wednesday afternoon coffee hour we got to talking to a popular campus personality who had been around these parts for a long time. The conversation drifted to university buildings, the old Science Hall in particular.

"If that building was moved to Harvard or Yale," said the person to whom we were speaking, "they would grow ivy all over it and call it beautiful and everyone would agree."

We think the man had an excellent idea. Lets start ivy or some other creeping vine, growing over our more unsightly buildings. In a few years they will look like the traditional temples of learning. Throw in a few legends and they might well become the most attractive structures on the campus.

People have been coming to us with all sorts of ideas for editorial comment. We are very happy to see this and will lend our efforts to their cause as soon as possible. We wish to remind these people who have plans for university betterment, that the Student Betterment Committee is their best bet. This committee has the backing of Central Board. We have only the backing of ourselves and a few devoted friends.

Association Finances Are Studied

Investigation Shows Approximately \$700 Left in General Fund

Will the Associated Students be in the hole next June? This is a question to which students should be given an answer. In order that the mass of association members might know, the Kaimin prints these facts about the 1945-46 financial setup:

The association has \$16,500 on which to operate this year. Of this sum athletics get 45 per cent, the Sentinel 16 per cent, and the Kaimin 8 per cent. This leaves in the general operating fund \$2,604.

Of this \$2,604 it is estimated by budget committee members that \$1,695 will be used in paying taxes on athletic contests and Masquer productions.

Subtracting this estimated tax figure from the general fund leaves the fund with \$909.

Budget and Finance committee will recommend that the Coffee Hour and Mountaineer receive \$50 and \$100 respectively, reducing the fund to \$759.

From this figure must come the money to pay for mixers, band activities, debate and oratory awards, Aber Day, and other miscellaneous things that may come up during the year.

It is possible that some of the above named activities will not require appropriations because of having carried over funds from last year. It is also possible, according to Budget and Finance committee members, that the tax figure might be reduced.

An increase in enrollment during winter and spring quarters would be of some help but as the percentages set up for athletics, Sentinel and Kaimin remain the same regardless of enrollment the aid from this source would not be substantial.

It seems improbable that ASMSU will be able to aid in tennis court improvement. It is doubtful that they will be in a position to spend very much on the proposed ice skating rink.

The question of whether or not the association will be out of funds in June, can not be answered with finality this early in the year. It can be said with certainty that Central Board is going to have to be careful with the money it has left.

Women who were presidents or were active in high school athletic associations are asked to report to Mrs. Ruth Greenfield in the Women's Gym sometime this week.

SPECIAL Double-Scoop

Sundaes

Delicious and healthful. Made with only the best ingredients. Come soon!

15c



CARRY'S FOUNTAIN LUNCH
301 North Higgins

SOS LAST NIGHT

MSU opened the first SOS of 1945-46 last night by cheering the Grizzlies on to Moscow.

Traditions chairman Janet Reinertson introduced the crowd on

Main Hall steps to Coach Jiggs Dahlberg who reviewed the outlook on the coming Montana-Idaho fracas. Mr. Gulbranson of the music school led the group in song and Russ Ceroovski in yells.

ELECTRICITY

Costs so Little

Does so Much

The Montana Power Co.



**Football!
Football!
Football!**

Everyone's Hollering Football

WHY NOT TALK OVER THE LATEST SCORES
AND FAVORITE STARS AT

MURRILL'S

119½ West Main



**"SWING
BAND"**

Be beamed about in this bow-trimmed beauty with gilt nailheads as an added attraction. Diagonal Stripe Wool and Rayon Trepaca in Grey-dove with Chinese Cherry or Cocoa Glace with Pacific Pine Green. Sizes 9 to 18.

Carol Kings are
priced from \$7.95

"WHERE SMART FASHION IS LESS EXPENSIVE"

Buttreys

220 NORTH HIGGINS

"MISSOULA'S FRIENDLY STORE FOR WOMEN"

March on Moscow Under Way

Scout Declares Vandals Big and Good; Grizzlies Determined to Score Upset

Both Elevens Seeking First Win of Season in Saturday's Conference Battle at Neal Stadium On Idaho Campus at Moscow

"The Idaho Vandals are big and they're good," declared Assistant Grizzly Coach Jimmy Brown, referring to Montana's opponents tomorrow, whom he scouted last weekend as they fell to Farragut Navy, 7 to 18.

Although Idaho was outclassed by Farragut, the Vandals will give Montana a real fight, and with this idea in mind, Head Coach "Jiggs" Dahlberg has put the Grizzlies through rugged defense drill all week. Defense was the weakest part of the Copper-Silver-Gold squad's otherwise fair showing against Utah State last weekend, and Idaho may well be surprised tomorrow.

The Grizzlies suffered no serious injuries against Utah State. Tragedy struck in practice Monday, however, when George Lewis, starting center, an all-state from North Dakota in 1943 and a member of the Missoula Spartans' 1944 champs, dislocated a shoulder, putting him out indefinitely. The Idaho game will be Tackle Jim Kirkemo's last one for Montana, as he will leave immediately from Spokane for the University of Michigan in Ann Arbor to study architectural engineering.

Possibilities for replacing Lewis at center are Bob Cook, Cutbank, reserve center, who played against Utah State; Bill Shepard, ex-Marine from Des Moines, Iowa, who moved from his regular spot at guard during the week, and Don Gall, 230-pound guard from Fort Benton, who also tried in the new position.

The Grizzlies left for Moscow via chartered bus this morning at 10 o'clock. Spokane, Washington, will be headquarters for the team Friday and Saturday evenings. Several carloads of Montana rooters are expected to attend the game, which will be played in Neal Stadium at Moscow. Announcement will be made later of the squad's returning time Sunday afternoon, so that the student body can stage a campus welcome.

Montana Lineup

Left end—Ken Krause.
Left tackle—Jim Kirkemo.
Left guard—Arch Craft.
Center—Bok Cook.
Right guard—Paul Williamson.
Right tackle—Clark Dayton.
Right end—Gar Thorsrud.
Quarterback—Harry Thompson.
Left half—Ed Gallagher.
Right half—Wally Stephens.
Fullback—Bill Preuninger.

Others who will probably see action on the Grizzly lineup are Gene Flemming, Everett Smith, Don George, Frank Kalisch, Ellis Nordwicke, Don Gall, Jack Donovan, Bob Rehfeld, Glenn Kirkaldie, Chuck Walker, Johnny Hydes, Max Sugg, Dick Arnst, Al Cramer, Bud Rist, Bill Shepard and Jerry Dietert.

Idaho's Prospects

The Vandals find themselves in a position similar to the Grizzlies in that they have a squad with little or no experience because of their enforced wartime vacation from football. The winner will be custodian of the "Little Brown Stein," traditional prize of the Idaho-Montana fray, until 1946 when the clubs meet in Missoula's Dornblaser Stadium. The wooden stein has been in Moscow since 1942, when Idaho won 21 to 0. Idaho uses a single-wing attack

and has been more than moderately successful in passing with Left Half Jim Hatch, a triple-threat man. Phil Litzenberger, quarter, is also a fair passer. The Vandal line averages 190 pounds. Left Tackle Frank Viro, who weighs 220 pounds and converts points after touchdowns, should give the Grizzlies trouble.

Inter-Frat Touchball Ends First Week Of Round Robin

Interfraternity touchball completes the first week of round-robin play this afternoon with the Theta Chi and SAE teams tangling.

The games have gotten under way in good fashion with a large campus interest in the league, reports Bob Tabbaracci, Interfraternity Council president. After the schedule is completed, a playoff will be held to determine the champion.

The complete round-robin schedule is as follows:

Monday, Oct. 22—Sigma Nu vs. Theta Chi.
Tuesday, Oct. 23 — Phi Delta Theta vs. Sigma Chi.
Wednesday, Oct. 24 — SAE vs. Independents.
Thursday, Oct. 25—Sigma Nu vs. Sigma Chi.
Friday, Oct. 26—Theta Chi vs. Independents.
Monday, Oct. 29—Sigma Nu vs. Phi Delta Theta.
Tuesday, Oct. 30—Theta Chi vs. Sigma Chi.
Wednesday, Oct. 31 — SAE vs. Phi Delta Theta.
Friday, Nov. 1—SAE vs. Sigma Nu.
First week's results:
Phi Delta Theta 1, Theta Chi 0 (forfeit).
Sigma Nu 12, Independents 6.
SAE 26, Sigma Chi 0.
Phi Delta Theta 18, Independents 0.

WAA Activities In Action Monday

Field hockey starts off Monday when the Tri-Delt team meets the Alpha Chi team, and the Kappas battle North Hall at 5 o'clock. Tournament games will be played Monday through Friday this year. Previously, games were scheduled only for Tuesday, Wednesday and Thursday.

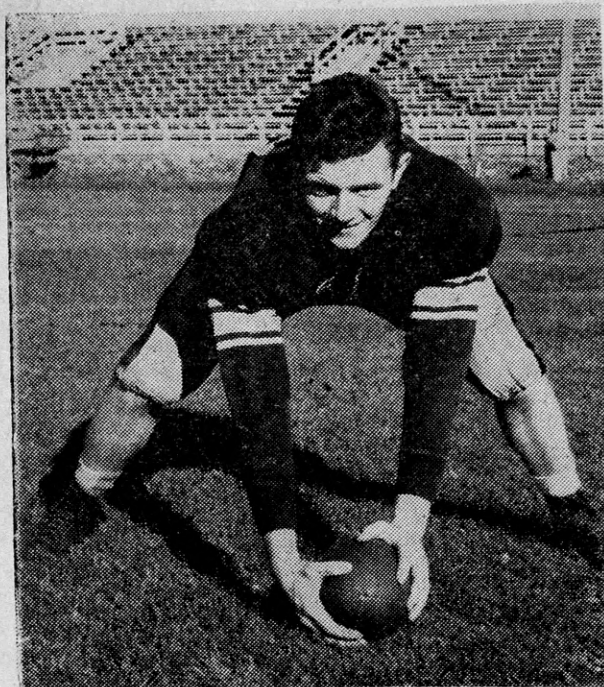
Ten teams are competing in the round-robin tournament.

The badminton tournaments will start Oct. 29, Chairman Dorothy Grant, Miles City, announced. A singles and doubles tournament will be played. Games will be scheduled from 4 to 6 o'clock, Mondays through Fridays. Eight hours of play will be required for a participation credit.

WESTON TO COVER GAME

Don Weston, Kaimin sports editor, will cover the Idaho game at Moscow tomorrow. He is with the Grizzly team on their special bus.

Grizzly Loss



George Lewis, starting Grizzly center in the Utah State game, will be out of the Montana lineup indefinitely as a result of a shoulder injury received in practice Monday afternoon. George, a member of Missoula's 1944 state championship football squad, was one of the peppiest and consistent of the Grizzly gridders. His loss will be sharply felt in tomorrow's crucial game.

HUDDLE STEAM

BY DON WESTON

Man for man, Montana elevens have always been as good as California or any Coast Conference schools. But the Grizzlies always have two strikes on them before they even go to bat in a game with the big boys of the conference.

First off, any home team has somewhat of an advantage in playing on their own grounds, and the Grizzlies always play the large schools away from home.

Secondly, the enrollment of California, Oregon and Washington is an enormous factor. A school like UCLA may have a turnout of 65 or 70 men, not many more than Montana or Idaho has in numbers, but every one of that 65 or more is virtually equal in playing ability. Having a student body of 8,000 to draw from gives a school quite an opportunity to build a football machine.

Where Montana might have one good player and one almost as good backing him in reserve, California will have six of equally good ability ready to alternate. If it were just a case of one good player against another good player, many a past Grizzly loss to a California squad would have been erased. Several good Montana teams have been burned out by mid-season from playing powerful coast outfits without proper substitution.

MSU Athletics Need Support

It's no fun to lose, especially when you know you could win if you could substitute on a par with your opponents. It isn't fair to ask Montana players to give their all only to always end in the cellar because of a lack of support in men and money.

If Montana fans want the Grizzlies to play with the giant coast schools they're going to have to back them like coast teams are backed. It is a crime that today most of the Montana high school stars go to college in other states. MSU must be made attractive to high school lads, thus giving our coaches a wealth of real material to work with.

To put Montana on a par with the conference it plays in will take a tremendous amount of financial support compared to the meager

Poor Turnout Of Harriers

Only three men, George Thiesen, Evanston, Ill.; Richard Frazer, Stevensville, and Dave Burt, Fullerton, Calif., have turned out for cross-country racing, reports Kirk Badgley, athletic director.

As seven men are needed to make up a team, it is doubted that Montana will be able to enter any of the cross-country events it has been invited to this fall, he said.

Monday, Oct. 22, will be the last day for any interested person to sign with Badgley at his office in Main Hall.

Unless four more men report, MSU will drop all arrangements regarding the three events it has been invited to.

State University. At overflowing capacity it could hold no more than 8,000 people—no wonder we cannot afford to bring other conference teams to Missoula. With a proper stadium and a good Grizzly team playing Washington, Oregon, or a California school, we believe Dornblaser could draw a crowd of over 25,000 from all over the northwest.

Work should begin at once to repair the athletic field; the ancient and decrepit public address system needs a \$1,000 rejuvenation; lack of any kind of a scoreboard is astounding.

Crystal Gazing

We are picking the Grizzlies to topple Idaho because of their strong offensive attack and the fighting spirit exhibited in the Utah State game.

Washington State over Oregon; Washington over Oregon State; Southern Cal dumping College of the Pacific; Missoula over Great Falls, and Anaconda topping Helena.

Phone 3838

City Cleaners

Service and Quality Always

612 So. Higgins Avenue

ASK US ABOUT RAY-D-ANT SIZE

PENNEY'S
J. C. PENNEY CO., INC.



Solid hit for every occasion—fluffy all-wool zephyr-knit fascinator that gives you sparkle any way you wear it! Warm, enfolding, in ten exciting winter-bright shades.

—Street Floor

Date Book . . .

New Initiates

The Tri-Delts added three new girls to their active list Tuesday when Betty Hyde, Kalispell; Helen Christianson, Lewistown, and Hazel Paul, Plentywood, were formally initiated. Mrs. N. G. LaRue of Hot Springs visited her daughter, Helen, on Tuesday.

Theta Chi President

Theta Chi elected Bob Morris, Missoula, their new president for the remainder of the year Monday night, after the resignation of Jack Zimmerman.

Alpha Chi Guests

Dinner guests at the Alpha Chi house Sunday were Betty Lou Malunet, Betty Gerspacher, Betty Mercea and Laura Mae Moore from Glasgow, and Dora Patterson, Malta.

Noodle Party

Sigma Chi pledges will entertain the actives and their dates at a Chinese lawn party Friday night in the Sigma Chi back yard. Saturday, Oct. 27, the boys will go on a Halloween hay-ride.

Twelve women from New Hall went home last week end. They were Pat McCullough, Mullan, Ida; Barbara Campbell, Kalispell; Jeanne Ballentine, Hamilton; Clara Cole, Darby; Dorothy Ann Emery,

INTRODUCING . . . THE SOCIAL CALENDAR

Considerable controversy has arisen this fall over conflicts in the social calendar. We think that an explanation of the functions of this calendar would help straighten out of the confusion in the minds of students.

All-university functions have precedence over the social activities of the lesser organizations. Community concerts, ASMSU mixers, Masquer plays, Music school programs, etc., have first choice for dates.

There are eleven weeks in a quarter, and it is impossible for other organizations including fraternities, sororities, independent groups and clubs to choose a Friday or Saturday night that won't be spoken for by another group.

There is basically nothing wrong with the social calendar. Most of the difficulty seems to arise from the fact that the functions planned in advance are not publicized well enough so that other organizations can look ahead and plan their parties accordingly.

Every Friday, the KAIMIN will publish a list of the planned activities. It is the responsibility of the organizations to set their dates and ask chaperons, preferably a week in advance. Any party not officially scheduled by filing a card in the Deans' office in Main Hall will not appear on this calendar. All chaperons must be approved by the calendar committee headed by Dean Ferguson, who may cancel any parties whose chaperons are not listed.

THE SOCIETY EDITORS.

Butte; Gloria Meehan, Butte; Shirley Robertson, Floweree; Molly and Mary Burke, Helena; Mary Francis Hamond, Butte, and Shirley Deal, Dixon. Kathleen Evans has been in Gardiner for the last week visiting her brother who is home on leave. Vivian Knudson was the guest of Dorothy Kurscher at her home in Townsend. Barbara Lovegrin, Helena, visited Marion Risken and Jean Heinecke. Barbara Burke, Great Falls, came to Missoula for the game last Friday and was the guest of Marion Risken, Butte.

Sigma Nu Barn Dance

The Sigma Nus will revivie an old tradition this fall when they sponsor a barn dance in November. Discontinued since 1942, the dance is on the order of the For-

ester's ball on a smaller scale.

A Sigma Nu pledge of 1941, Veteran Dave Thorne, Shelby, registered for classes last Monday.

Marion Watson, Missoula, was a dinner guest of the Alpha Phi house Thursday evening.

S/Sgt. Carroll Jacobs of Lexington, Kentucky, is a Sigma Nu house guest this week.

SAE Dessert

The Thetas were guests of Sigma Alpha Epsilon at an informal dessert at the house last night.

The actives of KAT had dinner at the Montmartre Cafe last Sunday. Two new pledges, Myrtle Lou Hammill and Barbara Haines, were their guests.

Sigma Kappa formally pledged 15 girls Thursday evening.

Dorothy Ann Gosman, Dillon,

SOCIAL CALENDAR

Oct. 26—Community Concert.

Oct. 27—SAE Barn Dance.

SX Hay Ride.

Nov. 2—South Hall Dance.

Nov. 3—Ski Club Mixer.

SN Barn Dance.

Nov. 10—Football game here (Pocatello Marine Base).

Nov. 16—Jan Garber's Dance Orchestra.

Nov. 17—SN Formal Dance.

Dec. 1—Crippled Children's Fund Ball, Florentine Gardens.

Dec. 7—WAA Xmas Party.

Dec. 8—Sadie Hawkins Dance.

Dec. 14—Basketball Tournament. Inaugural Ball.

has been visiting at the Kappa Kappa Gamma house this week. Thursday dinner guests at the house were Marian McAllister, Polson, and Harriet Reif, Bozeman.

Nine of the girls at Corbin Hall visited their homes last week end. Grace McCarter, Dubois, Idaho; Eleanor LaHood, Cartwell; Louise White, Arlee; Genevieve Wolfe, Hamilton; Kathline Lally, Somers; Anne Buckvich, Butte; Alice Marie Burke, St. Regis; Roberta Dial, Dixon, and Barbara Haines, Bonner. Shirley Larson's mother and father visited her Monday after bringing her back from her home in Thompson Falls. Doris Skelton's brother, Morris Skelton, arrived

from Idaho Falls to visit here Monday evening. Mary Alice Davidson's brother, Harry, is to arrive this week end.

South Hall Manager

Deanne Parmeter, Plains, was chosen athletic manager for Corbin Hall in the Monday night meeting. Clarice Graves, Fairfield, withdrew from school because of illness. Evelyn Rasmussen, Whitefish, who graduated from the School of Pharmacy last June, visited Florence Brackett Wednesday night and Thursday. Jack Eidel '43, Great Falls, visited Betty Hill over the week end.

Greek organizations announce the following new pledges:

Sigma Nu: Paul Dugan, Billings; Martin Wolpert, Hamilton. Sigma Chi: Roland Fisher, Helena. Theta Chi: Ray Dalrymple, Billings, and Harry Parmelee, Vailier. Alpha Chi Omega: Pat Wendt, Kalispell.

The Sigma Kappas are having a fireside tonight at their house for pledges and actives.

NEW PLEDGES

Kappa Alpha Theta—Myrtle Lou Hammill, Helena, and Barbara Haines, Bonner.

Sigma Chi—Ruel Rogers, Texas, and George Damond, Minneapolis.

Theta Chi—Russ Flattum, Grey Cliff.

Every Time

IT'S A CALL

FOR

BEDARD'S

for those

Super Southern Fried
Chicken Dinners

WITH ALL THE TRIMMINGS



?

Have You Visited Missoula's
Friendly New Gift Shop?

Do you know where
you can go to buy
the right gifts for
every member of
the family?

The Gift Shop

5 HAMMOND ARCADE

EUNICE M. BROWN

WILMA

MIDNIGHT SHOW

SATURDAY

Then SUNDAY-MONDAY

THE MOST AMAZING
WILD HORSE STORY
EVER
FILMED!



PLUS

This Big

CO-HIT

PRIMITIVE ROMANCE!

TARZAN
and the
AMAZONS



GET TICKETS NOW FOR

|| GLORIOUS MUSICAL MASTERPIECE ||

BLOSSOM
TIME

2 BIG V's You'll Always Find Here
Variety! Values!

Better Meats for Less

FANCY COLORED HENS Lb. 39c

PORK CHOPS (center cuts) Lb. 38c

Fancy Beef SIRLOIN STEAK Lb. 35c

FRAZER'S MEAT MARKET

801 SOUTH HIGGINS

Missoula Drug Company



Chen Yu Chinese Red

nail lacquer and lipstick
Smart Set Gift Box

Because it's a true, pure red any complexion type can wear Chen Yu Chinese Red with any costume color—and be right! Smart Set Gift Box includes nail lacquer, Lacquer base coat and matching lipstick.