

University of Montana

ScholarWorks at University of Montana

Montana Kaimin, 1898-present

Associated Students of the University of
Montana (ASUM)

10-29-1948

The Montana Kaimin, October 29, 1948

Associated Students of Montana State University

Follow this and additional works at: <https://scholarworks.umt.edu/studentnewspaper>

Let us know how access to this document benefits you.

Recommended Citation

Associated Students of Montana State University, "The Montana Kaimin, October 29, 1948" (1948).

Montana Kaimin, 1898-present. 2369.

<https://scholarworks.umt.edu/studentnewspaper/2369>

This Newspaper is brought to you for free and open access by the Associated Students of the University of Montana (ASUM) at ScholarWorks at University of Montana. It has been accepted for inclusion in Montana Kaimin, 1898-present by an authorized administrator of ScholarWorks at University of Montana. For more information, please contact scholarworks@mso.umt.edu.

Moscow—Prime Minister Stalin accused the United States, Britain and the so-called neutral countries of the United Nations security council Thursday of supporting a policy which can "lead to the unleashing of a new war." He added that the present international crisis "can only end in an ignominious failure on the part of the instigators of a new war."

New Haven, Conn.—Henry Wallace charged Wednesday that "Truman is desperate—the way all men who have sold out are desperate when their time is up and they must face the consequences of their betrayal." In the same speech he started "Dewey is smug—not only because he thinks he'll be elected, but because the men who support him are already in the government."

Dillon—Two sheep were killed when 12 cars of a freight train, and two engines and two box-cars of a cattle train were derailed in the Union Pacific yards early Thursday.

Berlin—The British commander in Germany, General Sir Brian Robertson, said Wednesday that he expected "no war in Europe for the next few months." However, he did not care to predict what might happen beyond that period.

New York—Alvin Dark, shortstop of the Boston Braves, was voted the National league rookie of the year.

New York—Little Caesar Petillo has reached an agreement with the major recording companies, and his 10-month old order prohibiting most of the country's musicians from making new phonograph records is about to be scrapped.

Eugene, Ore.—Writers for the University of Oregon paper, The Emerald, are advocating intramural pinball teams along with the long established basketball and touchball groups. They claim, "the pinball machine is now the major source of diversion on our campus."

REMEMBER
TO VOTE
ON NOV. 2



THE MONTANA

KAIMIN

NATIONAL,
CAMPUS ELECTIONS
TUESDAY

Z400 Volume XLX

Friday, October 29, 1948 No. 20

Here's the Gang That Put the Grizzlies on the Train



A small band of Grizzly rooters turned out yesterday afternoon at the Northern Pacific depot to see the Grizzlies off for BYU. The crowd didn't number more than 100 but the small pep band

and spirited fans gave the team a noisy send-off. The team will return Sunday.

Kaimin Features

RHODES CANDIDATES NAMED	Page 5
EDITORIALS	Page 4
SPORTS	Pages 6, 7
SPORTSLANTERN	Page 7
LET'S FACE IT	Page 8

Machines Not Working; Wide-Open Election Possible Next Tuesday

Passion Play Goes; Camels Provide Kick To MSU Performance

BY DON GRAFF

The much-heralded Passion Play has departed with its mobs of performers and sensation-provoking camels. Though the latter seem to have made a greater impression on local audiences than did the production itself, some consideration is due the overall staging of one of the world's premier religious plays.

One characteristic of the Black Hills play was outstanding. The production may have had religion but it also had a fine commercial touch. The Passion Play was certainly a professional show from staging to prices. In costuming, acting, and organization the hand of the practiced producer appeared.

Scenes such as the Last Supper, the Crucifixion, and the Court of King Herod displayed an expert touch and, perhaps due to that expertness, were moving. However, in the court scene it must be stated that Ann Arden's Salome wasn't quite up to one of Yvonne DeCarlo's performances.

Josef Meier gave a sincere por-

trayal of the Christus but acting honors must be reserved for Fred Hagen as Judas, Joseph Toniutti as Pilate, and, though a small role, Oscar Miller as Herod.

The amount and design of the scenery as well as the lighting of the production were widely advertised and justly so. The flaw may be that they contributed so much to the purely theatrical side of the play that they at times overshadowed the religious significance.

All that as it may be, Missoula and MSU have seen a brilliantly staged, world-famous Passion Play. Whatever the impressions of audiences, the Black Hills group did stage a bright bit of professional theater.

AKP FUND SET UP

Warren Mead, president of Alpha Kappa Psi, announced at the meeting, October 21, the donation of \$125 to the fraternity by Tom J. Davis, honorary member. This donation will be used as a fund from which an award will be given annually for the next five years.

Active Club Will Present Broadway Hits

Augmenting this year's theatrical schedule, the Active club of Missoula has made arrangements for three Broadway hits to be presented at the Student Union.

MSU students will be given a chance to compare a college and professional production when "All My Sons" opens Nov. 12. The Masquers put on this play last spring.

The other plays scheduled by the Active club are "John Loves Mary," Feb. 11, and "But Not Goodbye," April 4.

The Active club, in collaboration with the Civic Drama guild, has attempted to solicit plays that are at the present time being discussed in literary and theatrical circles throughout the land and are commanding attention in the newspapers and periodicals of today.

"All My Sons," by Arthur Miller, was a dramatic hit of the 1947 season on Broadway and received the Drama Critics award for that year. The Masquers presentation of this same play was accorded as one of the finest productions ever produced at MSU.

Prospects of a wide-open freshman primary election Tuesday appear bright as none of the three big political organizations, Interfraternity, Panhellenic, and Organized Independents, has put up a slate of candidates.

Petitions of candidates for the four class offices and central board delegate are due in the Student Union business office by 4 o'clock this afternoon. The petitions must be signed by the candidates and at least twenty other members of the freshman class.

Balloting will be from 9 a.m. to noon and 1 to 4 p.m. Tuesday in the Bitterroot room. First and second quarter freshmen will be eligible to vote. Bear Paws will supervise the balloting.

The two candidates receiving the largest number of votes for each office in Tuesday's primaries will compete in the general election which will be conducted within two weeks of the primaries.

No More Exams To be Given Early

Early final exams at the end of each quarter are no longer permitted, said Leo Smith, registrar. In cases of proved emergencies students may be absent from their scheduled examinations with the understanding that the examination will be given at a later date and at the instructor's convenience.

Dave Freeman, Missoula, ASMSU elections chairman, said the general election will probably be on Tuesday, Nov. 9.

For the first time in recent university political history Panhellenic and Interfraternity councils have declined to put up a slate of candidates. Both groups have left it up to the individual houses to put up their own candidates.

Interfraternity President Bob Stermitz, Helena, said the council's decision was an "experiment." He indicated that if the plan does not work to the council's satisfaction, the traditional Greek bloc will be reinstated for next spring's elections.

Panhellenic President Connie Shuder, Represa, Calif., said that group decided not to run a slate because of Interfraternity's action.

The Organized Independents also have failed to run a slate of candidates, and OIS President Les Rutledge, Big Sandy, said he did not know of any independents running for the freshman offices.

In previous years Interfraternity and Panhellenic have worked together to choose two candidates for each office to run in the primaries. The independents usually present a slate with one candidate for each office.

Last spring, however, the independents failed to run any candidates and the primaries were conducted practically without contest except for write-in candidates.

Fort Missoula To Be Tree Mart

Tree Nursery Gets 200 Acres, Expects Half-Million Seedlings

BY BIG JIM DILLON

Two hundred acres of land at Fort Missoula were recently acquired to augment the 20 acres of land which are supplying Montana, Wyoming, and Colorado with one-half million trees this fall. O. M. Patton, director of the forestry nursery said.

"Trees are sent to farmers in the three states to serve as wind breakers and shelter belts, with shipments to Wyoming and Colorado being made in one lump sum. Montana farmers get their trees periodically including some Douglas fir trees that are used for Christmas tree planting," Patton said.

Altogether, one-half million trees are shipped from the nursery each year. At the present time

there are approximately 300,000 trees "heeled-in."

Trees "Heeled-in"

Translating from tree language to English, "heeled-in" means the trees were taken from the nursery, graded for size, bundled in groups of 50, and put in dirt beds until spring.

"We had a good year for digging due to the exceptionally fine weather this fall. The boys did some fall sowing and transplanting and managed to get five acres of seeds," Patton said.

Tree Squeaks Help

Sixty forestry students are assisting Patton with the work at the nursery. They work on Saturdays and in three-hour shifts each day during the school week. Their work at the nursery coincides with their forestry training.

"Demands became so heavy on the nursery during the last few years that it was impossible for the nursery to supply the needs."

"Consequently, 200 acres of land at Fort Missoula were acquired to meet the demand. The new land is located about two miles west of the campus. Development will begin there next fall," Patton said.

Freshmen! Your applications are due today at the Student Union business office before 4.

Kids Party

Children over two years of age whose parents reside in the strip houses, the prefabs, or the trailers will be the guests of the Community center on Sunday, 2-4 p.m.

Each child is asked to bring an apple and a Halloween mask.

Hosts and hostesses will be Mr. and Mrs. R. W. Chambers, Mr. and Mrs. Donald Rebal, and Mrs. J. M. Larsen, all of Missoula.

Interfrat Not Running Slate In Frosh Vote

"The Greeks are not forming a slate for the freshman elections," Bob Stermitz, Helena, stated yesterday. Stermitz, president of Interfraternity council, said that this was being done in the nature of an experiment.

Every election in the past has seen the council come forth with a solid Greek ticket. "The reason," said Stermitz, "for not running a Greek slate is because Interfraternity is going to stay out of politics this election."

"If the Greek candidates are too numerous for any one office, and if a too unconsolidated Greek vote results, we will remedy the situation before the spring elections," Stermitz said.

Freshmen will choose candidates next Tuesday and applications for a place on the ballot must be turned in this afternoon by 4 o'clock in the Student Union business office.

Willie Keeler used the smallest bat known to the major leagues—31½ inches.

TONIGHT & SATURDAY

HOWARD HAWKS
GREAT PRODUCTION
ADVENTURE IN
EXCITEMENT
SPECTACLE
RED RIVER
Produced by
HOWARD HAWKS "RED RIVER"
JOHN WAYNE · MONTGOMERY CLIFT
WALTER BRENNAN · JOANNE DRU
RELEASED THRU UNITED ARTISTS

PHONE 4430
ENTAILO
MISSOULA'S HOME OWNED THEATRE
STUDENTS 50c

2 FEATURES
FOR YOUR
HALLOWEEN FUN FEST!
SATURDAY
MIDNIGHT
BOX OFFICE
OPEN 11 P.M.

ISLE OF MISSING MEN
GILBERT
ROLAND
MELN
GILBERT
THE LIVING GHOST
JAMES DUNN
JOAN WOODBURY
All Seats 60c (tax incl.)

Sound Patterns

BY

GEORGE S. FRIEDMAN

Antonin Dvorak's music is high-spirited and virile. It is often called poetic and even whimsical. We of America know him best for his Symphony No. 5 in E Minor. More informally we call it, "The New World Symphony."

While America was musically still in the kindergarten stage, Dvorak came here to become the head of the National Conservatory of Music in New York. He was fascinated by the land he found.

Speaking to his students of inspiration for the music of America, Dvorak could not understand why they looked to Europe for leadership.

"These beautiful and varied melodies," he repeated to his students, "are the product of the soil. They are American, and composers must turn to them. . . Only in this way can a musician express the true sentiment of the people."

His own words seem to express best what this symphony is about. It is America—it is unabated in its vitality—it is Dvorak.

In the modern vein, one of the biggest selling Capitol records is a Julia Lee recording. "Tell Me, Tell Me Daddy," is the label name. She really ties this one up with a surprise at the ending.

ASMSU broke even on the Zito dance.

Grad to Write On Ag Econ

Janet Reinertson '46 has returned to her home in Hot Springs after completing two years work at Radcliffe College on her Ph.D. degree.

Miss Reinertson graduated from the University and won a \$2,000 J. H. T. Ryman fellowship in economics.

The subject of her thesis is "Consumer Education" which is a study for the U. S. Department of Agriculture about the consumption function of foods and fibers.

Special adviser to Miss Reinertson on this paper is Dr. John D. Black, Henry Lee professor of Economics at Harvard and adviser to Congress on agricultural matters. Dr. Black will collaborate with her in writing this book.

When she gets her Ph.D. Miss Reinertson plans to either teach in a college or university or work for the Bureau of Agricultural Economics of the U. S. department of agriculture.

Miss Reinertson is a member of Alpha Lambda Delta, Spur, Mortar board, and Kappa Tau.

Dick Wohlgenant

For Freshman Delegate
to Central Board
(paid political adv.)

Hungry?

Drop in For

A Snack

CHILI

HAMBURGERS

CONEY ISLANDS

Missoula
Coffee Shop

Open Daily Until 3 a.m.

Starts SUNDAY

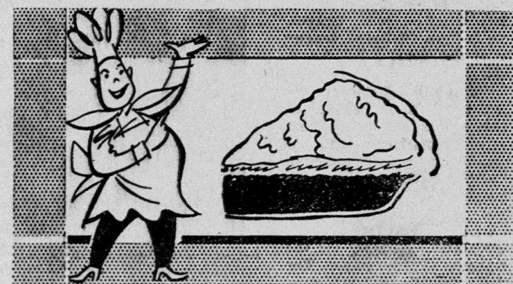
... First time at popular prices. Uncut! Three hours—exactly as roadshow showing.

PHONE 4430
ENTAILO
MISSOULA'S HOME OWNED THEATRE
3 GREAT LOVES!
The BEST YEARS OF OUR LIVES
starring
MYRNA LOY · FREDRIC MARCH
DANA ANDREWS · TERESA WRIGHT
VIRGINIA MAYO
5 GREAT STARS!

LEWIS AND YOUNG Present
Sigmund Romberg's **Glorious OPERETTA**
The DESERT SONG
Book & Lyrics by
OTTO HARBACH · OSCAR HAMMERSTEIN · FRANK MANDEL
Starring
EDWARD ROECKER
GALE SHERWOOD
and
JACK GOOD
MAGNIFICENT PRODUCTION
BY
COMPANY OF 115

WILMA

ONE PERFORMANCE
Thursday, November 4



Try Our Pies—They're Appetite Winners!

Pie ka winner for dessert. Serve a pie from our tasty and tempting array. Their wholesome goodness just "hits the spot." Enjoy the fresh fruit flavor of our berry pies, or the luscious, melt-in-your-mouth goodness of a cream-filled beauty. There's refreshment, appeal and good wholesome nourishment in every single bite. Stop in for one today—treat your family tonight!

SUNNY MAID BAKERY

110 W. Main

Phone 2384



I'm Getting Ready

to join the college crowd for an evening of relaxation and an all-around good time at

MURRILL'S

SLAKEPIT TURNS NURSERY . . .

Sigma Nus to be Papas, Sorority Gals to be Mamas, Mom's Club to Chaperone; Hickel Says All Will Benefit

Papa



Kenny Hickel, Sigma Nu president, will play father to an estimated 1,000,000 children Halloween night.

Something novel in the way of kiddies' parties will hit Missoula Sunday night when Sigma Nu fraternity entertains grade school children from four local schools.

Students from Paxson, Roosevelt, Willard, and St. Anthony schools will be allowed to disport themselves in the Snakepit Halloween evening, while sorority hostesses and members of the Sigma Nu mother's club hold things down to a roar.

As children drop in after 7:30 to play the age old game of trick-or-treat, they will be invited in for apple dunking, cider drinking, song singing, and other edifying pleasures such as these.

A group of young men in peculiar uniforms, variously styling themselves as clowns, buffoons, or musicians, will play popular childhood favorites for their little charges.

Previous estimates indicating that a blanket invitation to all school children would run the fraternity bankrupt, it was decided to include only children from the fourth to eighth grades, and other children who happen to be in the neighborhood.

"It is our firm conviction," said Pres. Kenny Hickel, "Wolf Point, that everyone connected with this magnificent enterprise—our third annual, by the way—will benefit from it."

"The brothers can learn to behave like model fathers, the sorority hostesses can learn to behave like model little mothers, and those of the mother's club who have forgotten the techniques of parental discipline can brush up. Only soft drinks will be offered, and no child under 35 will be allowed to smoke a cigar . . . without written permission of his mother."

Interested parents can obtain further information from Grandfather Eugene Kallgren, 1006 Gerald avenue.

Pepsi-Cola Awards Out This Year

Cancellation of new graduate fellowship awards for the current year has been announced by the Pepsi-Cola scholarship board.

These fellowships were inaugurated last year and 26 were awarded. Recipients will receive the full amount of the award and the board hopes to be able to make new awards in the future.

Mary Wall '48, who received one of the awards, is now using it to attend the University of California.

The Pepsi-Cola scholarship board has also cancelled awards of college scholarships to high school students until a later time.

Hours Listed for Exams

In the chart shown below the final examination schedule by hours for the autumn quarter is shown. The Kaimin will publish the location and room numbers where final examinations will be given at a later date.

BLOCKING OF EXAMINATIONS FOR AUTUMN QUARTER

Hour on which class has met during quarter	Hour and day on which examination occurs assigned by days of class meeting in week.	Meeting daily, four times a week, or MWF, MW, WF, TWF	Meeting TH, T, TThF, F	Day of Examination
10:00	8-10	10-12	Monday, Dec. 13	
8:00	8-10	10-12	Wednesday, Dec. 15	
8:00	8-10	10-12	Tuesday, Dec. 14	
9:00	8-10	10-12	Thursday, Dec. 16	
1:00	1-3	3-5	Monday, Dec. 13	
2:00	1-3	3-5	Tuesday, Dec. 14	
3:00	1-3	3-5	Wednesday, Dec. 15	
4:00			To be arranged	

SOCIAL CALENDAR

- October 29 Miss Montana dance.
- October 30 Independent dance. Sigma Chi Kiddie party. Women's Co-op.
- November 5 Pharmacy ball.
- November 6 College of Pacific at Missoula. Ski Club dance.
- November 12 Jumbo hall. Phi Sigma Kappa. Sigma Phi Epsilon. Sigma Alpha Epsilon.
- November 13 Sadie Hawkins.
- November 18 Masquers production.
- November 19 Delta Delta Delta. Delta Gamma. Forestry dance. Kappa Alpha Theta. Masquers production. New hall.
- November 20 Alpha Tau Omega. Masquers production. North Dakota university at Missoula.
- Sigma Nu barn dance. South hall.
- November 22 and 23 Community concert.
- November 25 to 28 Thanksgiving vacation.
- December 3 Kappa Psi. Phi Delta Theta masquerade ball.
- Theta Chi. Corbin hall.
- December 4 Spotlight ball.
- December 10 Alpha Chi Omega. Kappa Kappa Gamma. North hall. Sigma Kappa.
- December 11 Sigma Chi Christmas party.

Top Pics in Contest To Get Cash Award

Pictures to be entered in the Mortar board photography contest must be glossy prints, size 8½x11, Pat Miller, Missoula, chairman of the event, announced today.

The photos for the contest, open to all students, are limited to campus scenes. Cash awards will be given for the three best photographs.

Although the contest will not start until January, Miss Miller urged those interested to begin now so that a variety of seasonal scenes may be obtained.

This is the second year that Mortar Board has sponsored a photography contest. The pictures are used on calendars which the group will print and sell.

Greek Pledges Plan Tea-Dance Saturday

Sorority pledges will play hostesses to fraternity pledges at a tea-dance in the Student Union Gold room Saturday from 3 to 5 o'clock.

Committees for the dance are: Nancy Cunningham, Somers, and Jackie Hart, Spokane, reception; Jayne Radigan and Nancy Calvert, Great Falls, refreshments; Joyce Hardin, Billings, and Ann Stone, Missoula, invitations; Jane Hannah, Kalispell, and Anita Schmidt, Mobridge, S. D., checking; Gail Daggett, Lewiston, N. Y., and Peggy Clapp, Missoula, date and time; Jane Jackson, Harden, and Barbara Simmons, Whitehall, decorations and music; Jeane Trippett, Kalispell, and Beverly Staley, Great Falls, entertainment.

Housemothers and pledge-trainers from each sorority will chaperone the dance.

Season's basketball games listed today. Social calendar listed today—clip 'em out for reference. Remember to Vote on Nov. 2.

Ellis Photo Service

Quality Portraits at New Low Prices

345 BROOKS STREET

Used Cars

Terms - Trade

- '47 KAISER SEDAN
 - '42 FORD 2-DOOR SEDAN
 - '37 FORD COACH
 - '38 CHEVROLET SEDAN
- BAKKE MOTOR CO.**
Lincoln — Mercury

Stoverud's

FOR

Diamonds Watches
Jewelry
Hammond Arcade Building

For the Best Beer in Town



Sicks' Missoula Brewing Company

Sunday Treat

MILK SHAKES

SODAS

SUNDAES

BULK ICE CREAM

Open Sunday 12 'til 7

Hansen's
FAMOUS
ICE CREAM

519 S. HIGGINS

Make This Week End

A Special One

By Enjoying

Yourself at

The

MONTMARTRE CAFE

JUNGLE CLUB LOUNGE

CRYSTAL LOUNGE

WEST MAIN AND STEVENS

The MONTANA KAIMIN

Established 1898

The name Kaimin (pronounced Ki-meen) is derived from the original Selish Indian word, and means "something written" or "a message."

Published every Tuesday, Wednesday, Thursday and Friday during the school year by Associated Students of Montana State University.
Subscription Rate \$1.50 per year.



1948

Entered as second-class matter at Missoula, Montana, under Act of Congress, March 3, 1879

Printed by the University Press

55

EDITOR
Paul A. Hawkins

BUSINESS MANAGER
Bo Brown

MANAGING EDITOR George Remington
CAMPUS EDITOR Vin Corwin
NEWS EDITOR Joan Smith
SPORTS EDITOR Dwain Hanson
WOMEN'S EDITOR Louise Morrison
PHOTOGRAPHY EDITOR Jim Emrick

REPRESENTED FOR NATIONAL ADVERTISING BY
National Advertisers Service, Inc.
College Publishers Representative
420 MADISON AVE. NEW YORK, N. Y.
CHICAGO • BOSTON • LOS ANGELES • SAN FRANCISCO

About the New Law

Central board this week passed an amendment to its by-laws forbidding the distribution or selling on the campus of publications, handbills, circulars, calendars, programs, blotters, and what have you, unless permission is granted by the board.

Perhaps the real reason for this action has not been made clear. The amendment was passed to protect advertising in ASMSU-sanctioned publications. In other words, to insure that advertising revenue from the city of Missoula goes into publications which the student body as a whole may enjoy instead of having that revenue go into the pockets of certain money-grabbing individuals.

Missoula merchants are being hit plenty hard for legitimate advertising. There is no reason why they should be asked to finance these individuals who are knowingly or unknowingly cutting out advertising which goes into publications from which more than one person benefits.

But the new law does nothing to stop individuals from soliciting the advertising. It just forbids the distribution of the publications on the campus. Getting such publications on the campus would be no problem. The law merely points out that public opinion on the campus is opposed to these publications.

In order to accomplish its purpose of eliminating competition with advertising in authorized publications, Central board must work out some sort of a "blue card" deal with the local merchants. This idea was wisely suggested by ASMSU Pres. Jim Mueller.

If the "blue card" system works, local merchants will not buy advertising from anyone who does not have an ASMSU "blue card," and no one except ad chasers for authorized publications will be given the cards.

It is to the interest of Missoula merchants and the student body as a whole that the "blue card" system must be effective.—G.R.

Editorially Speaking

BY PAUL A. HAWKINS

Well, well well. We see where Interfraternity council has decided to keep hands off the frosh elections. The Athenians have decided to let the boys run that actually want to run, a kindly gesture if I've ever seen one.

The council has said the reason for this action is because

"we're going to stay out of politics." But in clarification they have hastily added "in this election." Naturally, this above all elections is the one to keep out of. Why? The frosh officers, at least to former traditions and performances, have been merely figureheads. The lone delegate to Central board is usually so meek at board meetings he is almost invariably overlooked by the upper-class delegates. So what has the council got to lose by staying out of this election? Not much.

At the present time, with their jealous eyes projected toward spring elections, several houses are priming the political pump. Make no mistake—when the spring voting comes up the double-dealing will commence. To offset the possibility of two or even three candidates from one house the Greek axe will fall, each house will get a slice, (through a little previous string-pulling) and there will be any number of good candidates shoved aside—"to make it more representative." If the Greeks are going to present a slate they should let the houses run as

many good men as they have in the primaries. ASMSU wants men in offices that get there through popular vote, that have leadership and ability, and that can carry out a job efficiently—not men chosen by a small group of men. The in-

Geology Labsters Irked at Pix

By P. A. H.

One of the many near-sighted Geologists who haunt the barren, bleak, dark, and rocky portals of the so-called Geology labs staggered into the Kaimin room last night.

Said the squinting rock-scratcher unto me:

"You guys got that picture caption wrong yesterday. It wasn't the zoology lab peering away under those dim lights," he said, as he shielded his bleary eyes from the glaring J School beams, "it was we poor students of the earth's crust."

He shot his jealous, squinting eyes around the light-flooded Kaimin salt mine and carefully fondled the two seal-beam spot-lights on my desk.

"For three years we've been trying to get lights," he cried as I led him into the photo lab so he could see me, "and it seems our only hope is 51 and 52."

"Yes, my friend," I replied, "that's your only hope and salvation."

"Good bye, aristocrat," he called, "and see if you can rectify that mistake over the picture."

I could smell the carbide and see the faint glow of his miner's light as he trundled wearily back to the dungeons below Main hall—a pathetic sight.

Dear Editor . . .

HEARST KNOCKED,
NOT CALIFORNIANS

Dear Editor:

With some dismay I note that today's Kaimin carries an article labeled "California Writer Pans Missoula." The letter of Maintenance Engineer Swearingen to the Los Angeles Examiner eases the worry but increases my feeling that the incident might easily be misunderstood.

The insulting article by George Dixon appeared in the Los Angeles Examiner. To the journalists of the Kaimin that should mean what it does to Californians, at least: the appearance in a W. R. Hearst paper of such an article automatically results in disbelief and usually discredits the "story."

Usually such articles are created in the over-stimulated minds of Hearst writers. Therefore, your article might better have been labeled "Hearst Writer Pans Missoula." There are many Californians here who came here by choice and like Missoula.

At any rate I wish to apologize for the Hearstian insult. Next time let us consider the source!

Eugene Keith Chamberlin
Instructor, History
and Pol. Sci.

Ed. Note: Thank you, we agree, and the Kaimin apologizes to Californians.

terfraternity handout next spring can't be beaten unless they pull out of the council. As it exists now, the sororities and fraternities vote for the stereotyped handout—they have no choice.

If the council persists in controlling the Greek vote for solidarity they better get a more democratic way of selecting their candidates—some of the petty jealousies of the houses should be cast aside for a change.

FIRST WITH THE BEST

The Annual

Pharmacy Ball

Semi-Formal

Soft Lights — Sweet Music

Florentine Gardens

November 5, 1948

MUSIC BY THE MUSIC MEN

Number of Tickets Will Be Limited

Campus

Briefs

A Halloween party, complete with treasure hunt, ghosts, and Jack-o-lanterns will be the bill of fare at the Phi Sigma Kappa house Saturday night, 7 to 12, for all members and their dates.

Surprises sprinkled with a "backwards" theme will be the main course. The dessert will consist of dancing and refreshments.

Mrs. Wanda Marzolf, Red Cross director, college activities, Pacific area, will visit MSU Monday, Nov. 1 to inspect the campus unit.

A luncheon will be served from 12 to 1 p.m. Faculty committee members will be present, and Mrs. Marzolf will address the student chairman committee members.

Favorite old sheets will be one of the costumes in order when the LSA throws its Halloween costume party next Sunday at 5:30 at St. Paul's Lutheran church.

Dr. Maurine Clow, acting dean of student's, will be in her office Monday after a month's illness.

Annual Ski club sweater dance will be given in the Gold room Nov. 6, 9 to 12 p.m. Boyd Swingle's orchestra will play. Prizes will be given for the best male and female costume. Tickets cost \$1.20 per couple and will be sold to the public by Ski club members on the campus.

University students will conduct Youth Sunday services at the Episcopal church Sunday, Nov. 1, at 11 a.m. Frank Gonzalez, Helena, will give the sermon. Others who will take part are Dick Pennington, Superior, Wis., Jeanne Jones, Butte, Sam Kenney, Lewistown, and Campbell Calvert, Laurel.

Frosh vote Tuesday.

FOR

Quick Service

FOR

A Guaranteed

Steak

TRY THE

4-B's Cafe

1661 W. Broadway Ph. 3666

MSU Grad Students From All Parts of Globe

Of the 82 students registered for graduate work at MSU, ten are from foreign countries.

Their fields of study vary from pharmacy to physical education.

The ten students are Xenia Basta, Panama; Suzanne Deutsch, France; Suzanne Abran Hargrove, Algeria; Juan A. Hernandez, Puerto Rico; Pauline James, India; Chi Shau Ling, China; Siu-Hwa Tung, China; Eduviges Helga Walmer, Argentina; Robert Deville-chabrolle, France; and Hana Bila, Czechoslovakia.

Dick Wohlgenant

For Freshman Delegate to Central Board
(paid political adv.)

Rothmoor Gabardine
ZIP-IN

COATS,



Are Worn by Smart
Young Women on All
Leading Campuses

Zip-in-Linings
Three Styles

Cummins

Down with Ineligibility

Up with Montana

Up with LeClaire

"DON'T RULE ME

INELIGIBLE FOR THIS ONE"

Elect

Laurie LeClaire

ELIGIBILITY PARTY CANDIDATE FOR

Freshman Delegate to

Central Board

(paid political adv.)

Frosh . . .

Today is the deadline for those petitioning for freshman class offices. According to Dave Freeman, freshman class chairman, petitions must be turned in at the business office.



DOUBLER Is Different

Here's a two-way campus-sports shirt that looks just as well worn buttoned up with a tie as it does open at the neck without one.

Gabardine, in solid colors. Two pockets. Don't miss it!

Men's Shop



Four MSU Students Chosen As Candidates For Rhodes Scholarship

Ackerman, McRandle, Rooney, and Wylder
Selected from Forty-Two Applicants By Local
Rhodes Scholarship Committee

Four MSU students were named last night by the university scholarship committee to go before the state selection committee on Dec. 7. The candidates, chosen from a list of 42 applicants, are Ramsey D. Ackerman, Missoula, junior in the history and political science department; James R. McRandle, Duluth, Minn., junior in the history and political science department; Lawrence F. Rooney, Missoula, graduate student in English; and Robert C. Wylder, Missoula, graduate student in English.

Two men will be chosen by the state committee to represent the state at the district meeting Dec. 11. Four men will then be selected from this district meeting, which will include candidates from Washington, Oregon, Idaho, Wy-

oming, and North Dakota, in addition to Montana.

Dean J. Earl Miller, local committee head, announced the finalists last night.

"The committee sat in session from 1 until 6 tonight (Thursday). We had 10 men to choose from, the rest being eliminated prior to this by discussions and examination of records. All of the men who appeared before the committee were very high class men and students with good records, so you can understand that the selection was very hard to make," the dean said.

The qualification the committee deemed necessary for the applicants was a better than B average. "The committee does not, except in extraordinary circumstances, nominate a man whose scholastic average is less than 2.3," Dean Miller said.

Members of the selecting board in addition to Miller are Prof. Robert Bates, Dr. R. H. Jesse, Prof. E. L. Freeman, Registrar Leo Smith and Vince Wilson.

Elect Al Andrus NON-BIPARTISAN POLICY CANDIDATE FOR Freshman Vice-President

"I promise to change the foreign policy of Missoula State University."

(paid political adv.)

WRIGHT WRANGLES WEASELS

Zoology Prof Conducting Experiments to Determine
Reason for Change of Color in Pigment of Weasels
BY NORMAMAE MILKWICK

The saying goes that leopards don't change their spots, but weasels do change color and Dr. P. L. Wright would like to know why. Every fall weasels turn white and every spring they turn brown again.

For many years Dr. Wright, associate professor of zoology, has been trying to find out why, but so far he has been unsuccessful.

At the present time he is conducting an experiment dealing with the reproductive cycle of these animals. He is co-operating with a professor at Columbia university. In order to help him, Sigma Xi, national scientific honorary, has granted him \$250 to purchase weasels, and the University Research committee has also given him grants for this work.

Hormones Wanted

Dr. Wright furnishes the material and his colleague in New York analyzes it. They are trying to determine the hormones which allow weasel embryos to be inactive for several months during the gestation period and then suddenly become active again.

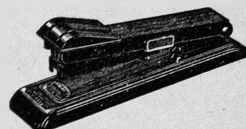
If they are successful in understanding this relationship Dr. Wright said, they might be able to speed up the gestation period of weasels and other closely related mammals.

Solution Takes Time

So far they have been working one and one-half years on this experiment and in time they hope

to come up with something fundamental, he said.

Although weasels are expensive they are probably the easiest mammals to study of all those which have this strange reproductive cycle. Dr. Wright has about 35 weasels under study at the present time.



Your personal stapler. A small machine at a small price.

A good man
to know better

Your Stationer

For that unusual item
Visit

the OFFICE SUPPLY COMPANY
"EVERYTHING FOR THE OFFICE"
MISSOULA, MONT.

Expert Gilding and Silvering of Evening Slippers Youngren's Shoe Shop

Win Hikes Jumbo To League Lead; South Beats Ticks

Jumbo hall took over first place in league "B" last night by downing Theta Chi 12-0.

In league "B" play South hall shoved the Forestry club deeper into the cellar position with a 12-0 win.

Jumbo had a 6-0 halftime lead with a second quarter pass, Roman Pfeffer to Clay Fanslow. Again it was Pfeffer throwing in the third quarter, this time to Bob Taylor in the end zone to wind up the day's scoring. Kenny "Porky" Leaf was outstanding for Jumbo with his pass catching and defensive work.

Today Jumbo hall plays its third game in as many days, this time against Sigma Nu which is deadlocked in second place with Theta Chi. A Sigma Nu win would place them in a first place tie with Jumbo.

Political Action means you protect yourself at polls.

Class Ads . . .

FOR SALE: Melville-Clock upright piano. Recently tuned. Good condition. \$75. Call 7626 between 12 noon and 1 p.m.

FOR SALE: Study table and lamp, bed davenport, like new, sturdy hardwood bunks complete with mattresses. Phone 5083, 620 North Ave. E.

WANTED: New faces, new ideas, new friends. Apply Bitterroot room, Monday, Nov. 1, 7:30.

NO ESCORT: Come anyhow. They're all at the OIS Halloween party, Saturday, October 29.

LOST: Class ring, FCHS 1948. Initials JRU engraved. Please return to 621 Eddy or phone 8866. John Ulrich.

NEED IT FIXED? Handy campus dressmaker. Altering and dressmaking. Margaret Martin, prefab 24.

LOST: Ronson lighter, initialed KHC. Return Kelly Clifton, Sigma Chi house. Reward.

LOST: Glasses, in plaid case. Fountain pen also in case. Call 7440 if found.

WILL STUDENT who loaned red flanneline Eversharp to me in Gold room Saturday, Oct. 9, please contact Lester Dimmitt, room 6, South hall.

Elect John W. BONNER

DEMOCRAT

Governor

Bonner is a native Montanan
Bonner is a veteran of War II
Bonner was graduated from Montana schools and the Montana State University

Bonner made an outstanding record as Attorney General

Bonner is for a "Greater University" and a friend of the University; he has endorsed 51 and 52.



From Experience, Training and Accomplishment, Bonner is well qualified to make an outstanding Governor for the People of Montana.

Bonner would be the first person who is a native of Montana and a graduate of its public schools to become our Governor

Vote X for 51 and 52 to assure the present and future of "Our University."

Pol. adv. paid for and inserted by the University Bonner-for-Governor Club, Carl Davis, president.

- FRESHMEN -

Elect Dick WOHLGENANT

FRESHMAN DELEGATE TO CENTRAL BOARD

(paid political adv.)

It's Time for A Fun Fest at the

Blackfoot Tavern

Music

Refreshments

2 MILES ABOVE BONNER



KEN MAR CLEANERS

2330 SOUTH HIGGINS

PHONE 4901

BYU Is Grizzly Target Tomorrow

Fessy Plans Aerial Attack to Offset Cougar Ground Drive

Montana's Grizzlies will try once more to get back in the winning columns tomorrow afternoon when they battle the Brigham Young Cougars in BYU's Homecoming game at "Y" Stadium, Provo, Utah.

After the 39-0 shellacking they received last week at the hands of Idaho, the Grizzlies concentrated on their pass offense in practice drills this week. Coach Doug Fessenden said Cougar strength lies in their ground attack and he is hoping to thwart their running offense with a strong passing offense.

Coach Eddie Kimball's Cougars have met the Grizzlies twice within recent years and go on record with one defeat and one victory. The Grizzlies took a 20-7 decision from them in 1941, while the Cougars came back the following year to put the Grizzlies on the short end of a 12-6 score.

Cougars Loaded

Kimball, in his 11th year at Provo, has been working with 17 returning lettermen, in addition to a promising group of sophomore candidates. The Cougars have taken three games from their opponents in this year's play while suffering three defeats from such formidable teams as Utah U., Texas Mines, and Utah State.

Coach Fessenden considers Scotty Deeds, who will be back in the halfback spot after being laid up for most of the season, one of the outstanding threats which the Cougars offer. He also has high praise for Kimball Merrill, captain of the '48 squad, and an outstanding tackle.

Quarterback Jim Eccles runs the Cougars from the "T" and has a fine receiver in End Thane Stone, a two-year letterman. On the other wing is Glen Clark, who earned letters previously as a halfback, but has been switched to the end spot this season.

Hot Backfield

The Cougars boast of two fine running backs in Lyle Koller and Bruce Osborne. Koller, one of the backfield regulars last year, is a fine punter and a tricky ball carrier. Osborne played the regular fullback position for the Cougars last year and is very fast for a man of his size and weight.

Anchoring the Cougar line is Marion Tree, reputed to be one of the outstanding guards in the Skyline conference.

Intense scrimmaging has resulted in injuries to several Grizzlies. Ole Hamneress suffered a

Jumbo Student Aims on Warmth

Harold Foss, Jumbo, intends to keep warm this winter. He took an old hose off a vacuum cleaner, hitched one end to the heater in his car outside the window, put the other end through the window into his room. Result: heat, at the flick of a switch.

Defensive Stalwart

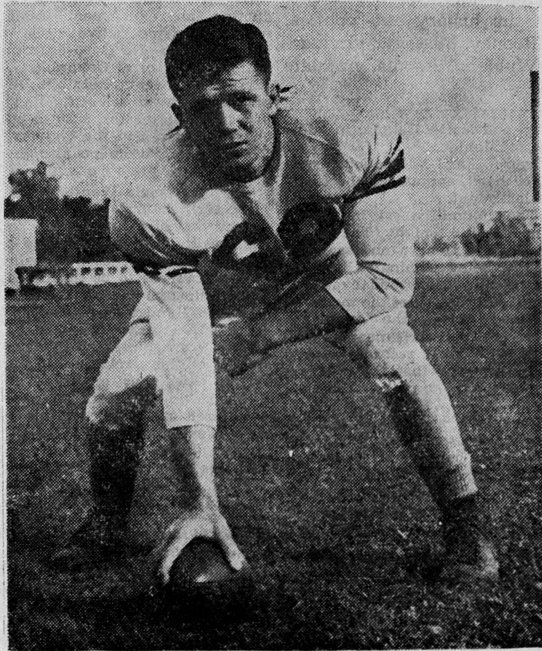


Photo by Foley

Steve Kuburich, Grizzly center, will see action against the Brigham Young Cougars tomorrow afternoon at Provo, Utah. Kuburich is a letterman, weighs 190 pounds, comes from Anaconda, and has been outstanding this year as a linebacker.

Grizzlies Vote Confidence to WSC Tackle

Mike Kumpuris, Little Rock, Ark., and Big Lee Cork, Missoula, stalwarts in the Grizzly line, expressed yesterday their desire to give Laurie Niemi, 240-pound Washington State tackle, who won outstanding lineman honors last week, a "vote of confidence."

That Niemi deserved the honor was the consensus of most of the Grizzly football squad. Some thought Bill Ballew, Idaho end, should receive a great deal of praise. Ballew was outstanding against the Grizzlies last week.

"Niemi is big and tough," Kumpuris said. "I don't think anyone took him out all day when we

played WSC; you just hit him and bounce off."

Kumpuris, who spent most of the afternoon opposite Niemi as a defensive tackle, also expressed his admiration for the big All-Coaster because he was one of the best sports Mike has played against this year.

"He never pulled anything dirty on me," Kumpuris said. "He can beat you up enough by just charging into you with all that brawn."

"I'd like to have about four just like Niemi," Paul Szakash, Grizzly line coach, stated, "but this Idaho end, Ballew, should be commended. No one is going to go inside or outside of Ballew very easy, and as an offensive end he's terrific on downfield blocking."

Forestry Dean Back From Loggers' Meet

Kenneth P. Davis, dean of the forestry school, has returned from Portland where he attended a meeting of loggers and lumbermen of the State Resource Roads committee.

"The five western states have formed State Resource Roads committees to work with the State Highway commissions to improve roads so that they will be in condition to haul natural resources to processing centers," he said. "There is considerable work to be done on this problem. We must ascertain the amount of tonnage hauled on our roads, the importance of this tonnage, and work out from these statistics important problems such as load limits."

The conference was particularly interested in loggers' and lumbermen's problems, Davis said. The net result, however, he went on, will be the general improvement of western roads and driving.

Grizzly Cubs, MSC Bobkittens Battle Tomorrow Night at 8

Losers to WSC Coubabes, MSU Yearlings Point for Win Over Ancient Rivals in First Of Two-Game Series; Foes Unpublicized

The Cubs and Montana State Bobkittens tangle on Dornblaser field Saturday night at 8.

This year's Kitten team is still an unknown quantity, since their ranks are not composed of publicized prep players. So far this season they have played one game against the School of Mines which they won.

The game will be the second of the season for the Cubs. They were defeated by the Washington frosh last week, 19 to 13. The Cubs and Kittens meet again Nov. 6 at Bozeman.

Line Sparkled

In commenting on the Coubabe game Coach Eddie Chinske said, "The Cubs showed excellent line play, but still have not developed a good passing offense."

Saturday's lineup will be: Robert Byrne, right half; Keith Wright, left half; Matt Cassick, left guard; Malfred Ingram, right guard; Kenneth Echols, left end; John Rothwell, right end; Jerry Shandorf, right tackle; Fred Volk, left tackle; Paul Wold, fullback; Gene Patch, quarterback; and Byron Robb, center.

Byrne, all-state fullback on the Billings 1947 championship team, will be working with two of his teammates from last year's squad, Ingram and Rothwell, who also received all-state mention.

Volk, 195-pound addition to the Cub line, was a three-year letterman at Great Falls high school. He made all-state in his senior year.

Ex-Teammates Play

Shandorf and Patch of Anaconda will be teaming up again this year. Shandorf, who recovered

a Coubabe fumble and set up a Cub touchdown, has been converted from fullback to tackle.

Coach Fessenden called Fullback Wold a "sleeper" after the Coubabe game. Wold, then a substitute, ran 67 yards for a touchdown. Wright is a star from Havre high school where he was also prominent in basketball, and made state pole vault champion.

Be Smart



in an outfit from

LaCombe's

SKIRTS BLOUSES

Dick

Wohlgenant

For Freshman Delegate to Central Board
(paid political adv.)



Our Steaks Are Good, Too!

Fairway Drive-Inn

(On Highway 93)

SOME PERSONS LIKE BOP
SOME "O SOLE MIO"

All Types Are Played by
KEN KAISER'S TRIO
at
The Chateau

Dick

Wohlgenant

For Freshman Delegate to Central Board
(paid political adv.)

After the Game



Stop at the
**HIGH SCHOOL
CANDY SHOP**

for good food specials
Lunch 50c Dinner 65c

Speedy Curb Service

HAMBURGER KING

101 East Railroad

CURRY'S FOUNTAIN LUNCH

Sodas - Sandwiches - Coffee
307 North Higgins

1948-49 GRIZZLY BASKETBALL SCHEDULE

December

DATE	OPPONENTS	AT—
Friday 3	Washington State	Missoula
Saturday 4	Washington State	Missoula
Friday 10	Utah State	Logan, Utah
Saturday 11	Wyoming	Logan, Utah
Friday 17	Washington State	Pullman
Saturday 18	Washington State	Pullman
Monday 20	Whitworth	Missoula
Tuesday 21	Whitworth	Missoula
through	Montana Collegiate Invitational Tournament	Los Angeles
Friday 31		

January

Wednesday 5	Cow Palace (play San Jose State college)	San Francisco
Monday 10	Idaho State	Missoula
Tuesday 11	Idaho State	Missoula
Friday 11	Gonzaga	Spokane
Saturday 22	Gonzaga	Spokane
Friday 28	Montana State	Missoula
Saturday 29	Montana State	Missoula

February

Friday 18	Gonzaga	Missoula
Saturday 19	Gonzaga	Missoula
Friday 25	Montana State	Bozeman
Saturday 26	Montana State	Bozeman

The SportsLantern

BY DWAIN HANSON



Let's ascend the sports ladder . . . Grizzlies are still lamenting their bruising contacts with Idaho's star end, George Ballew. He looked good from the stands, but the Grizzlies say the Vandal is terrific. Montana found it was next to impossible to go through or around his end, and that he can throw a wicked block as well.

College of Pacific, whom you'll see here next week, is quarterbacked by one of the game's outstanding performers. He's Eddie LeBaron, an 18-year-old sophomore who last year was ranked on an equal footing with Johnny Lujack in the art of passing and faking. Pacific's Bengals ran up 61

points against Portland, a team of Montana's caliber.

A week ago when the Grizzlies were working on live tackling in preparation for the Idaho game, Sam Leeper and Carol Mayte paired off. Mayte ran for Leeper, who missed the tackle. A second time Mayte got away from the veteran Grizzly center. Mayte sauntered back to his starting position and shouted, "For gosh sakes, Sam, tell me where you'll be and I'll run into you."

Dick Reid, transfer student from Miles City junior college, has been gamely working out with the Grizzlies all season, without any hope of lettering or making a trip. The 218 pound tackle is ineligible, but he has chosen to stay out and provide the Grizzlies opposition in scrimmage. Dick's been "a great help" says Coach Fessenden.

Coach Jiggs Dahlberg's cagers have been showing offensive power in their fast break, but their defense, as with most teams employing the race horse style, is weak. The offense this year no doubt again will be sparked by the sensational Bobby Cope, who worked his hook shot for 509 points last year. Bob's right hand is so consistent now that he's devoting much time to his left.

Tom Selstad, though he has a shoulder injury which could receive further aggravation in football, will continue to be a grizzer until Nov. 20 when the football season is finished. Boy, how the basketball team could use him. Tom worked the ball into the hole to Cope last year when everybody else failed. What's more, he's a good shot.

Leading prospects are Jim Graham, Capt. Lou Rocheleau, Dan Marinkovich, Bob Patton, Lyle

Sprained Ankles to Head Colds—
Rheinhart Keeps Check on Athletes

The trainer's duties are something like those of a service station attendant who maintains a car until something serious happens and then sends it to the garage for repairs. A trainer takes care of an athlete until something serious happens and then sends him to the doctor for treatment.

This is the analogy expressed by Naseby Rheinhart, athletic department trainer.

Sometime during his career at the University an athlete will receive treatment from him. The treatment can be had for anything from a sprained ankle to a head cold. Rheinhart has two major weapons at his disposal for treatment of these ailments and injuries. They are the whirlpool bath and diathermy machine.

The whirlpool bath is used to stimulate injured muscles by heat and massaging by the use of moving water. The diathermy machine is used for heat treatments that require penetration of the muscles

or bones. It is also a sure-fire method of curing a chest cold.

When asked about the probability of accidents he state, "There is no way of predicting the type or number of accidents except when they run in cycles."

"For example, if a right end is injured you can usually count on more injuries in that position."

During the course of a year 2,500 yards of adhesive tape are used by Rheinhart, enough tape to run from the base of Mount Sentinel to the top and back again. He will also use over 100 tubes of analgesic balm, 6 gallons of rubbing

alcohol, and 6 gallons of tincture of benzoin.

Rheinhart has been with the University since 1935 and has taken care of athletes engaged in all sports activities.

FOR PROMPT AND
COURTEOUS SERVICE

Call

Deluxe Cabs

Phone 6664

24-Hour Service

Pin Beaters
Open League

Intramural bowling gets underway tomorrow at 1 p.m. Keglers open their series at the Liberty bowling alleys with the rolling of seven matches.

Fourteen teams have entered a league which will operate on a single round-robin tourney basis. Unlike last year, no second round is scheduled. Matches consist of three lines. The rolling of three matches on Oct. 30, Nov. 13, and Dec. 4 is necessitated in order to avoid conflicts with football games, the Thanksgiving holiday, and final examinations.

Tentatively, the champion of the league will be determined by final standing instead of a post-season tournament. For season play, team scoring is determined by the total pins of five men on a team, and in case of a tie, by an extra frame. Forfeits are declared against teams bowling with less than three men. If three men roll, they are permitted to have two "dummies," each with a score of 125.

Tomorrow's schedule:

Phi Sigs vs. Sig Eps
Theta Chi vs. Kappa Sigs
Phi Deltas vs. SAE
South hall vs. Jumbo
Sigma Chi vs. Corbin
Sigma Nu vs. ATO
Forestry club vs. Independents

MSU Student
To Attend Meet

Bob Nickelson, Hamilton, was appointed by Eleanor Linse, president of the Red Cross campus unit, to represent MSU at the college activities workshop discussion groups in Seattle today and tomorrow.

Nickelson will attend the discussion on health and safety, learning how to promote an awareness of safety and health among the student body.

Grenager, John Eaheart, and Bob Souhrada, forwards; Cope, Gar Thorsrud, and Bob Ripke, centers; and Dick Carstensen, George Scott, Burt Thompson, and Jim Weir, guards. Ripke won't be eligible until winter quarter.

Chuck Davis, brilliant MSU frosh forward of 1946, is an instructor at the physical training school at Ft. Bragg, N. C. Chuck was transferred from Fort Lewis, Wash., where he took basic training. The ex-Grizzly is the only recruit in the school staff, which is composed of sergeants and untouchables.

The Grizzlies' new mascot bear, presented to MSU through the courtesy of the Montana Athletic association, is named Mac. The last mascot on the campus in 1946 was named Fessy IV.

EXPERT RADIO REPAIR
All Work GuaranteedLou's Radio Service
Phone 2428 1602 DeFoeCARE WILL SAVE
YOUR CAR

Keeping your fingers crossed won't save your car! But regular checkups and repair will.

Stop in at

Collins Texaco Service

OSCAR AND RUDY

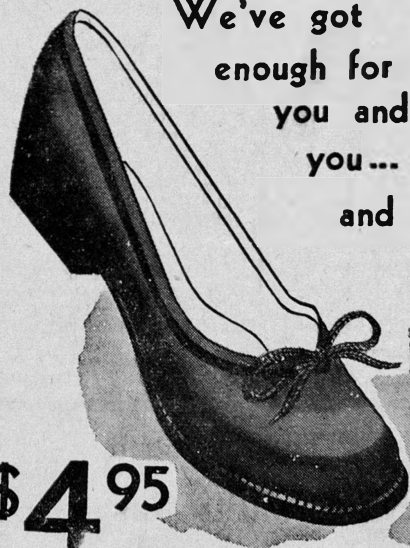
741 South Higgins

Buttreys

SH-H!

We've got
enough for
you and
you...

and you!



\$4.95

BALLERINA SHOES

with long-wearing Goodyear welt soles. In Inky Black Suede with V-throat that does amazing wonders for your ankles. Only \$4.95

Buttreys

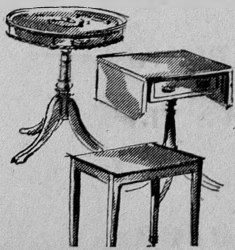
Conveniently Located
The
MUSICAL NOTE

614 SOUTH HIGGINS

New and Used Records

In a Prefab or
Strip House Use
End Tables
from

Lucy's



Let's Face It . . .

BY GEORGE REMINGTON

I have avoided printing the fall quarter social calendar in hopes the ASMSU social committee and the driving force behind it might wise up and revise this schedule of dictated campus social life.

But, since the social committee does not seem inclined to make any changes, we are almost compelled to run the calendar for its news value. After all, the students on the campus must know what is planned for them in the way of social activities.

Power Phooey

I understand the powers that be (and they're not students) have asked that an answer be written to my first column on the social calendar. This column mildly attacked the principle of "closed dates." I would welcome such a reply if the powers can coerce anyone into writing it. But please try to limit your letter to 400 words.

Before looking over this fall's calendar, let's look into the principle of the poll tax. My education is far from complete, but I thought the last stronghold of the poll tax was in the southern states. However, we seem to have it right here on the campus, and we're not even in southern Montana.

More Phooey

In order to vote for a Homecoming queen, men had to pay for themselves and a date to go to a dance. Now in order to nominate a candidate for Miss Montana of 1949, students must pay to go to a dance. This principle is not only unfair, according to the generally accepted theories of American government, but it also indicates

that the dance must be pretty lousy if the privilege of franchise must be used as an inducement to attend.

Now let's look over the functions so far this fall. Jimmy Zito just managed to break even despite his closed date. The WAA barn dance came out okay from a financial and entertainment standpoint, but after getting a closed date the gals didn't have their dance at the Student Union. Consequently, the whole Student Union building went unused that night.

Still More Phooey

Tonight is the Miss Montana Halloween dance. Despite the fact that it is a "poll tax" dance, I hope it is a success because its proceeds will help send a Montana lovely to Atlantic City next summer.

But what about the students who don't want to go to the Miss Montana dance (and I'll bet there are plenty)? What are they going to do? I won't venture a guess except to say that I'll bet they won't sit at home and read Plato.

But tomorrow night three organizations are having parties: the Independents, who number about 2,500; the Sigma Chis, who have at least 100 in their ranks; and the Women's co-op, which houses about twenty. If past experience holds, more people will attend the Sigma Chi party alone than will go to the Miss Montana dance.

The Pharmacy club secured a closed date for its traditionally not-too-well attended formal ball on Nov. 5. The Student Union will not be available to those who do not care to take in the Pharmacy ball that night. The ball is downtown, but it has a closed date so the Union will go unused unless the lounge is left open for wrestling. Still, the ball couldn't accommodate one-fifth of the campus if that many wished to go.

The Ski club has an exclusive date on Nov. 6. The last time the Ski club sponsored a dance it did not pull enough attendance to make expenses despite a similar closed date and plenty of advance publicity. Where did those who didn't attend the dance spend their evening? Certainly not at a fraternity or sorority fireside because fraternities and sororities could not have firesides on that "closed" night.

Still the Ski club gets an exclusive date. But on the following Friday three fraternities and the largest men's dormitory all have functions on the same night. Unless the social habits of MSU students have changed radically in one year, any one of the four living-group functions on Nov. 12 will have a larger attendance than will the Ski club dance on Nov. 6.

Still Phooey

Look ahead to Nov. 19 and 20. Note the number of competing parties, each of which will draw larger crowds than nine-tenths of the closed-night dances at the Gold room.

I realize that the social committee works hard to give the students

Spurs Elect, Initiate 24 Tonight

Twenty-four sophomore girls will be initiated into Tanan-of-Spur this evening at 7 o'clock. The new Spurs will receive their emblems and pins, and elect officers. A social meeting will follow the formal initiation.

Retiring Spurs turn over their campus duties to the new Spurs next week.

Those going active are Joan Beckwith, Kalispell; Lee Birkett, Roundup; Margaret Bosch, Great Falls; Aletha Bradley, Billings; Beverly Burgess, Missoula; Donna Burr, Kalispell; Lois Jean Chauvin, Butte; Gayle Davidson, Polson; Betty Ann Delaney, Missoula; a healthy, well-balanced, campus social life. I know that drawing up a social calendar is a headache. But it is a headache which could be avoided, for apparently the students don't care for the brand of social life which is planned for them. If they did they would attend the closed-night functions, and all the campus organizations would make money and everybody would be happy.

Let the social committee set the dates for the traditional and well-attended affairs: Sadie Hawkins, Foresters, Barristers, Co-ed ball, the Night club dance, and the prom. These are the only functions worthy of a closed date.

End of Phooey

If the fraternities and sororities want to cut each others' throats by all having functions on the same night, let them go ahead. Or if they want to arrange non-conflicting dates, let them get together in their respective "councils" and make up a schedule of their own.

If other campus organizations want to compete with each other and with the Greeks let them go ahead. If they lose money, which a goodly share of them will unless the ASMSU social committee or the behind-the-scenes powers can find a way to keep students from going downtown in search of a better time, let it be their loss and not the loss of ASMSU.

Let's hope we see a different arrangement winter quarter.

Commander Here For Naval Reserve

Commander Ken A. Ayers, Seattle, 13th naval district volunteer reserve program planning officer, will discuss changes in army and navy reserve force laws with interested students today at 3 p.m. in the Bitterroot room of the Student Union.

soula; Nancy Fields, Missoula; Louise Franz, Kalispell; Edna Geary, Missoula; Ruth Heinrich, Missoula; Margaret Jesse, Missoula; Jeanne Jones, Butte; Helen Lambros, Missoula; Shirley McKown, Seattle, Wash.; Diana Matson, Red Lodge; Lavonne North, Billings; Donna Ring, Missoula; Doris Stamp, Klein; Carol Walsh, Missoula; Bernice Wiley, Helena; and Betty Young, Lewistown.

According to Commander Ayers, new legislation by congress has greatly increased the benefits offered to both veterans and non-veterans who enlist in the armed forces reserves. He will explain pay increases and retirement benefits.

During World War II, Commander Ayers was in charge of amphibious operations at Attu and Kiska. He was awarded the Bronze Star medal for his work as damage control officer on the aircraft carrier USS Shangri-La.

Dick Wohlgenant

For Freshman Delegate to Central Board
(paid political adv.)

— Freshmen —

VOTE

For

DON LUCAS

President

- ★ Well known Montana man
- ★ Temporary Freshman President
- ★ A man who will help your class

VOTE LUCAS NOV. 2

(paid political adv.)

Down With Sin

Vote A Straight Purity Ticket

Vote for
JOHN LAHR
FOR FRESHMAN
CLASS PRESIDENT

(paid political adv.)



LOVE . . .

at First Bite
Tasty Barbequed
Sandwiches

BUGS BAR-B-Q

(on Highway 93)

End of Month

Topcoat

SALE

A selected lot from our regular stock . . . all famous name brands of course. Choose your favorite from a grand selection of fleeces, gabardines, and many, many more. It's your chance to save on the coat of your preference. Sizes 35 to 42 regular, plus some shorts and longs. Regular to \$47.50, now only . . .

\$29

One of a whole host of values from all over the store.

MEN'S WEAR . . . Street Floor

The
Mercantile



Fill Your Car with

High Quality Gas —

And Pay the Lowest Price!

REGULAR 76 OCTANE 26½¢ a gal.

ETHYL 80 OCTANE 28½¢ a gal.

SPUR GAS

500 East Spruce—Opposite the Brewery