

University of Montana

## ScholarWorks at University of Montana

---

Montana Kaimin, 1898-present

Associated Students of the University of  
Montana (ASUM)

---

10-7-1949

### The Montana Kaimin, October 7, 1949

Associated Students of Montana State University

Follow this and additional works at: <https://scholarworks.umt.edu/studentnewspaper>

**Let us know how access to this document benefits you.**

---

#### Recommended Citation

Associated Students of Montana State University, "The Montana Kaimin, October 7, 1949" (1949).

*Montana Kaimin, 1898-present*. 2478.

<https://scholarworks.umt.edu/studentnewspaper/2478>

This Newspaper is brought to you for free and open access by the Associated Students of the University of Montana (ASUM) at ScholarWorks at University of Montana. It has been accepted for inclusion in Montana Kaimin, 1898-present by an authorized administrator of ScholarWorks at University of Montana. For more information, please contact [scholarworks@mso.umt.edu](mailto:scholarworks@mso.umt.edu).

# Remington Gets Board Nod For Kaimin Editorship Post



THE MONTANA

**KAIMIN**

Z400 Volume LI Montana State University, Missoula, Montana Friday, October 7, 1949

No. 7

## Former Columnist Replaces Smurr as Kaimin Top-Kick

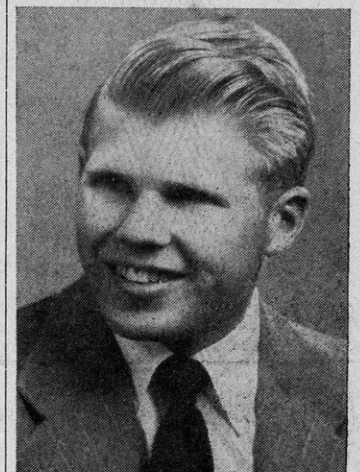
George Remington, Anaconda, was named last night by publications board to succeed Bill Smurr, Sacramento, Calif., as editor of the Kaimin. The board's recommendation is subject to approval of Central board.

Remington is known to the majority of those on the campus on the basis of his writings for the Kaimin for the

past two years. His column, "Let's Face It" appeared for a year as a commentary on Montana sports events and news.

### Active Journalist

Remington was appointed to the position of associate editor of the Kaimin in March of 1948, a spot he had until the staff switch in March of 1949. He is a member of Sigma Alpha Epsilon fraternity, a former member of the Intercollegiate Knights, and a member of Sigma



GEORGE REMINGTON

Delta Chi, the national men's professional journalistic fraternity. He was the winner of the Sigma Delta Chi Kaimin Service award in the spring of 1948.

### Smurr's Statement

Former editor, Bill Smurr, was contacted immediately following the board's selection and gave the following statement:

"George Remington is a standout. Everyone who has worked with him knows that. Soon Kaimin readers will know it too. I feel almost a personal pride in his selection, for in the three years we have worked pleasantly together, we have always agreed on the type of Kaimin the University needs. I know that under George the paper will continue to be the spokesman for student interests.

"I know also that his personal charm and organizing skill will develop an institution no less devoted to the interests of the entire university and the greater system of which it is a part. I am excited at his fortuitous selection and pledge him whatever cooperation I can give in the busy months to come."

## Rubinoff Concerts Today, Tonight

Rubinoff will stage his two performances today at the Student Union auditorium. One this afternoon at 2:15, the other tonight at 8:15 p.m.

Student tickets for this afternoon are 75 cents and the evening show \$1.80.

Tickets may be purchased at the Student Union business office, the high school office, Hefte's Music shop, and the Orvis Music house.

Some of the pieces Rubinoff is expected to play are: Anniversary Song, Intermezzo, his original arrangement for violin of the Warsaw Concerto, Clair de Lune, Rhapsody in Blue, and Polonaise.

## Enrollment At University Unit Drops to 7,567

### Two Per Cent Decline Reported by Chancellor For University System

Enrollment at the six units of the University of Montana showed a two per cent decline for the first week's registration according to an announcement by George A. Selke, chancellor. Enrollment figures for the greater university were 7,365 for the first week of this year as compared with 7,567 for a similar period a year ago.

Eastern Montana college of education showed the greatest increase in enrollment with 451 students enrolled this quarter as compared with 331 in 1948. This is an increase of 37 per cent.

Western Montana college at Dillon made a 22 per cent gain in enrollment, and Northern Montana college at Havre showed a 16 per cent increase.

### MSC Drops 10 Per Cent

A drop in enrollment was shown for Montana State University, Montana School of Mines, and at the college in Bozeman. The drop was 5 per cent for MSU, 7 per cent for the Mines, and 10 per cent for Montana State.

## Majority of Business, Ad Graduates Remain in Montana, Poll Indicates

A mail survey of MSU business administration graduates recently completed by Alpha Kappa Psi, men's professional business administration fraternity, shows that the majority of these alumni have remained in Montana, according to Elmer Stevens, senior from Libby.

Of the 208 graduates who answered questions concerning residence, 194 were Montana residents at the time of graduation. Of these, 148 or 76 per cent remained in Montana while the remaining 24 per cent left the state. Thirty-five of the 46 men who left the state were first employed in Montana and left later.

Of 14 non-resident graduates, 7 stayed in the state and became Montana residents. Those who left gave the following reasons: Better chance for advancement, 43 per cent; higher salary, 26 per cent; transferred by employer, 13 per cent; other reasons, 18 per cent.

The 204 graduates who reported their specific positions were primarily in managerial and professional posts as follows: 68 mana-

Reid, Helena; Charles Robey, Spokane; Richard Siebenforcher, Troy; Larry Silvernale, Spokane; Duane Smith, Malta; Robert Smith, Choteau; Don Stanaway, Billings; Clemens Ward, Missoula; Dick Wohlgenant, Miles City.

gers, 36 accountants, 21 salesmen, 11 clerks, and 68 others.

### Employment Breakdown

Fields of employment were reported by 227 graduates as follows; accounting, 17 per cent; retailing, 16 per cent; services, 11 per cent; wholesaling, 7 per cent; teaching, 7 per cent; manufacturing, 6 per cent; banking, 5 per cent; others, 30 per cent.

Questionnaires were mailed to 650 male graduates of the MSU School of Business Administration, and 229 were returned. Of the returns, 46 were from graduates of the class of 1929 and earlier, 119 from the classes of 1930 through 1935, and 64 from graduates of 1946 and later.

### Returns Incomplete

While the incomplete returns make some error almost certain, the incoming returns seem to indicate that few business administration graduates leave the state and those who do leave on their own are most commonly enticed by offers of higher pay or better chances for advancement. They also indicate that business administration graduates generally enjoy managerial or professional positions and enter accounting, retailing, and service occupations as a rule—a pattern consistent with the jobs now available in the state.

## Last Weekend Hectic One for Campus Coeds



Last weekend was climaxed by a number of activities for University students. The Associated Women Students sponsored a tea in honor of the freshman women. (Upper left) A reception at the Sigma Kappa sorority honored their new pledges. A portion of the 24 women in the receiving line are shown in the upper right. The student body turned out to meet the victorious Grizzlies on their return from Utah and escorted them to the University with an impromptu parade. (Upper right) Open house at the Kappa Alpha Theta house marked the end of a busy Sunday.



# Remember

Applications for the two positions of associate editor on the Kaimin are due in the Student Union business office by 3 this afternoon. The applications are to be addressed to Laura Bergh, Froid, chairman of publications board.

Applicants are required to attend the meeting of the board at 4 today in the Eloise Knowles room of the Student Union.

The ASMSU constitution defines the requirements for associate editor as follows:

Applicants for the position of associate editor shall have served on the Kaimin staff or have had one year's practical newspaper experience and have attended Montana State University at least two quarters including the one in which they are selected.

## WARREN

2023 South Higgins

**TONIGHT & SATURDAY**

*Thrilling story*

of the "bad" girl, the taxi-driver, the blonde and the beautiful belle who live and love in the shadow of gangland!



**MARGARET O'BRIEN**  
Angela Lansbury • George Murphy  
Phyllis Thaxter

— Co-Hit —

**JOHNNY MACK BROWN**

**"DESPERATE TRAILS"**

with **Bob BAKER • Fuzzy KNIGHT**  
Saturday Matinee for Children Under 12 . . 9c



**SUNDAY and MONDAY**  
THE KID NEXT DOOR BECOMES THE GROWN-UP KILLER!  
**Mickey ROONEY**  
**Brian DONLEVY**  
**Ann BLYTH**  
**"KILLER M'COY"**  
JAMES DUNN • MGM PICTURE

Directed by ROY ROWLAND  
Produced by SAM ZIMBALIST

## Lambda Chi Alpha, Co-op Top Spring Grade List

Six women's and two men's groups topped the all-University grade index for Spring quarter, figures from the Registrar's office revealed yesterday. Lambda Chi Alpha fraternity took top honors with an index of 1.576, followed by the non-sorority women, 1.550, and Synadelphic, 1.519.

Kappa Kappa Gamma sorority's 1.483 index qualified them for fourth place in the combined men and women's list and third on the women's list alone. University women are close behind the

Men				
	No. of Members	Average Credits	Av. Grade Points	Index
Lambda Chi Alpha	16	13.281	20.937	1.576
Non-fraternity men	1,608	13.805	19.871	1.439
All University Men	3,022	13.949	19.780	1.418
Sigma Alpha Epsilon	2,301	13.826	19.323	1.397
Sigma Chi	109	13.917	18.908	1.358
Phi Sigma Kappa	114	13.984	18.706	1.346
Alpha Tau Omega	76	13.361	17.756	1.328
All Fraternity men	41	13.719	17.902	1.304
Sigma Nu	693	13.873	18.051	1.301
Sigma Phi Epsilon	102	13.995	18.063	1.290
Theta Chi	56	14.723	18.696	1.269
Phi Delta Theta	64	13.359	16.421	1.229
Kappa Sigma Delta	95	14.152	17.268	1.220
	20	13.550	15.900	1.173
Women				
Non-sorority women	360	14.386	22.311	1.550
Synadelphic	18	14.111	21.444	1.519
Kappa Kappa Gamma	53	14.943	22.169	1.483
All University women	721	14.343	21.238	1.480
Delta Delta Delta	52	14.269	20.288	1.448
Delta Gamma	65	14.630	21.061	1.439
All University	3,022	13.949	19.780	1.418
All sorority women	361	14.301	20.168	1.410
Alpha Chi Omega	27	13.851	19.444	1.403
Alpha Phi	60	13.933	19.483	1.398
Sigma Kappa	48	14.500	19.854	1.369
Kappa Alpha Theta	56	13.785	18.482	1.340

(The grade index is computed by dividing the average number of grade points by the average number of credits. An index of one (1) indicates a "C" average, two (2) a "B" average, etc.)

## School Pool Opens Soon

The university swimming pool will be back in use next week, according to Dr. Charles Hertler, chairman of the department of health and physical education. When the pool was being cleaned in preparation for the opening of school it was found that the filter pipes needed replacing as well as the gravel and sand in the filters.

Students wishing to use the gym may do so by checking at the physical education office. The schedule for use of the gym is: Tuesday and Thursday (all day) and on Monday, Wednesday, and Friday the gym will be open for half-hour periods, beginning at 9:45, 10:45,

## Starr Urges Care In City Traffic

Mayor Ralph Starr urged Thursday that students be very cautious in crossing the streets of downtown Missoula, while the traffic lights are not in operation.

"No accidents have been reported to date," the mayor said, "but the danger of mishaps is very prevalent."

The master control switch for regulating the lights has not been received in Missoula as yet. He stated that the switch is due some time this week and that the lights will go into use "just as soon as possible."

All students were requested to drive slow at all intersections until normal traffic regulations can be resumed. "The delay in shipment of the control switch is not the fault of the city," Starr stated, "but a delay resulting from lack of materials at the manufacturing plant."

1:45, and 2:45, according to Dr. Hertler.

**WIN A NEW FORD**

**700 VALUABLE PRIZES**

in **FORD'S \$100,000 CAR SAFETY CONTEST**

See us for your free entry blank NOW!



**H. O. Bell Co.**  
"Your Ford dealer since 1915"

## Short on Notes? Order by Mail

If you are one of those students taking a survey course involving a lot of lecture notes, you might be interested in the manner in which the problem is solved at California. The Daily California, student paper on the Berkeley campus, has of late been carrying advertisements of firms who thrive on supplying answer books and lecture notes for various subjects.

One such advertisement reads, "It's a rare student who can take notes that compare with (brand name) notes for accuracy, completeness, and clarity . . . Plan to supplement your own class notes with (brand name) notes." The notes available include three courses of economics, two of psychology, philosophy, and history,

## JOURNALISTS GET WORD ON INFORMATION AIDS

The senior seminar of the journalism school met for two hours in the reference room of the library yesterday morning.

At the request of James L. C. Ford, dean of the journalism school, Catherine M. White, reference librarian, spoke on aids, useful in locating information of all kinds. This included reference works in the field of periodical literature, the catalog of books published in the United States, handbooks, and other ready reference works useful to them.

and one each of business administration, geology, physics, and sociology. The advertiser further states that the list will grow as the semester progresses.

Another similar firm offers private tutoring in mid-term seminars with rates of \$2 for a two to three hour session, with the "answer book on sale."

**Stop Searching for A Good Time!**

FIND IT AT . . .

# MURRILL'S

**See SHEAFFER'S NEW TOUCH DOWN**

NEW . . . DIFFERENT . . . BETTER in every way

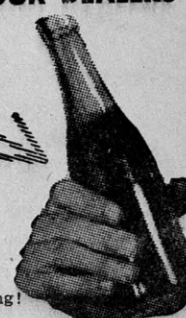


*Easiest pen in the world to fill!*

**The OFFICE SUPPLY CO.**  
115-119 West Broadway, Missoula

## For Your Thirst Pleasure

ASK FOR THESE FAMOUS BEVERAGES BY NAME AT YOUR DEALERS



- NESBITT'S CALIFORNIA ORANGE
- CLICQUOT CLUB SPARKLING SOFT DRINKS
- BUDWEISER NOTHING LIKE IT . . . Absolutely Nothing!
- KESSLER BREWED FROM MOUNTAIN SPRING WATER
- ROCKY MOUNTAIN BEER AT ITS BEST!

## Zip Beverage Co.

L. G. ZIPPERIAN, OWNER  
MANUFACTURERS AND JOBBERS  
Missoula, Montana

## WILMA YOUR LAST CHANCE TO GET Theatre Student Cards

On Sale in Wilma Lobby, Friday, Sat. and Sun. (50c)  
Available to All Students and Faculty

FRI. - SAT. **LUST FOR GOLD** and **THE FAN**

MIDNIGHT SATURDAY—Sun., Mon., Tues., Wed.

New Romantic Team!



**JAMES STEWART • ALLYSON**

**THE STRATTON STORY**

with FRANK MORGAN





## --: Strip Divots --:

Even with the splendid cooperation shown by the people of Missoula, the housing situation for married students at Montana State University still remains quite black. At the time of school registration, there were 142 families unable to obtain housing in any of the University's units.

Bob Breen, housing manager, through the cooperation of Andy Cogswell, asked the help of people of Missoula. The Garden city's generosity was immediately shown and at least 88 families have found housing and are attending school. There are about 54 families that have not.

Under the present rulings, those persons with families that are now attending school have housing priority over those not attending regardless of any former listings. In other words, if you are attending school and your family is living elsewhere, you will be housed before a person who is not in school even though his housing number is less than yours.

### Orchids to Missoula

The University sincerely extends its thanks and gratitude to those persons in Missoula who so graciously listed housing facilities with the housing office so that the students might attend school.

The summer's turnover in the Row houses, prefabs and trailers amounted to approximately 150

families, with 419 families now residing in the three units. About a thousand persons make up the entire population. And, as can be seen by the birth notices, this population is steadily increasing.

### Coming Election

Watch your mail boxes for news of a coming election. Complying with the usual custom, election of mayor and councilmen for the housing units will take place during the fall quarter. Mayor Andy Arvish, 11 Cascade, is going to call a meeting of the council for nominations in the coming election. Ballots will then be mailed to all residents for voting. The ballots will be cast at an entertainment feature at the Community center.

For the benefit of new residents, certain precautions must be adhered to during cold weather. Zero temperatures make it necessary to leave your water taps open allow a small stream of water to run through the lines. Do not remove your space heaters without proper authority from the housing office. Should you freeze up, do not put fires in the cook stove.

### Clean Cesspools

During the past few weeks all cesspools have been drained and chemically treated. It was found necessary to build two new ones on Lake street. To keep the drains clean a chemical will be distributed to all residents in the near future with directions as to its use.

The expense of draining 37 cesspools drained the housing till considerably, and consequently the budget does not allow for winter screening this year. However, if enough persons are interested in obtaining glazed screening, Bob Breen will purchase it in quantity lots at a saving. If interested, leave your name at the housing office.

### Speeders Beware

The number one problem of the housing units—speeding—has created a cloudy dust of protest again. The maximum limit within the housing area is 15 miles per hour and 25 miles per hour along South avenue East. The housing office will appreciate the license numbers of those who travel in excess of these limits.

Bob Breen has been trying to obtain the services of Winn Hunt, a recognized trainer and caller of square dancing, to instruct housing residents the fine arts of square dancing. Most of those who went "back East" during the summer know that square dancing is the number one fad.

Breen would like to see more use made of the Community Center this year. Remember, it's your

## WAA to Honor Frosh Saturday

The Gym Jam, an annual affair sponsored by the WAA, will start the ball rolling for the women's recreational department at 10 o'clock Saturday morning. This Gym-Jam is to acquaint the freshman women as well as other new students on the campus with WAA, its officers, recreational program, and system of acquiring participation credits.

Box lunches, contributed by the residence halls, will be served to freshmen, starting at 12:15. Joanna Midtlying, Deer Lodge, president of WAA, emphasized that freshman women will NOT be served in the halls Saturday noon, and if they want to eat, must come to

place to use and it doesn't cost a cent. Parties and gatherings of all sorts are welcomed from members of the row houses, prefabs and trailers.

the women's gym. Others wishing to participate should bring their lunches if they have not already been ordered.

After registration, all will have the opportunity to participate in the various recreational sports, including the major team sports of softball, and volleyball.

Another feature of the Gym-Jam will be the appearance of a booklet to be published quarterly by

the women's athletic department and the WAA. The first issue will introduce the officers, give a complete breakdown of the various sports played throughout the year, information on tournaments, and sidelights concerning the department.

Keeping up with the Joneses isn't nearly as dangerous as trying to pass them on a hill.

## D-A-N-C-E

Every Saturday Night

In the

American Legion Hall

Tommy Meisinger and His Orchestra



Were loyal to you...SC\*

★ SHRINK-CONTROLLED ...

Wash SC's any way you like ... the SIZE is GUARANTEED for the life of the sock or your money back.

95c

Olympic White Even sizes only 9-13.



★ SHRINK-CONTROLLED

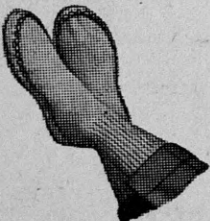
ADLER SC\* WOOL SOCKS

Now fortified with Nylon throughout for 2½ times longer wear.



...everybody's rushing ADLER SLIPPER SOCKS

Indoor-Outdoor 100% wool Slippers and Socks in One with rawhide soles and sidewalls.



Maize  
Red  
Royal Blue  
Green  
Camel  
Maroon  
Navy

2 x 1 rib pattern

\$2.50

Links and Links pattern

\$2.95

THE ADLER CO., Cincinnati 14, Ohio  
Empire State Bldg., New York

For "HARD-TO-HEAT" Rooms

Coleman OIL HEATER



\$59.95

RADIATES! CIRCULATES! BOTH AT ONCE!



FULLY EQUIPPED!  
✓ Automatic Fuel Control!  
✓ Automatic Draft Control!  
✓ Low Flame Fuel Saver!  
✓ Low Draft Burner!  
✓ Beautiful Streamlined Design!

BIG HEAT OUTPUT...

Just the right size for the prefab and strip houses.  
59.95 Terms Available

BARTHEL HARDWARE

Next to Montana Power



WITH SMOKERS WHO KNOW...IT'S

Camels for Mildness!



Yes, Camels are SO MILD that in a coast to coast test of hundreds of men and women who smoked Camels — and only Camels — for 30 consecutive days, noted throat specialists, making weekly examinations, reported

NOT ONE SINGLE CASE OF THROAT IRRITATION DUE TO SMOKING CAMELS!



# The MONTANA KAIMIN

Established 1898

The name Kaimin (pronounced Ki-meen) is derived from the original Selish Indian word, and means "something written" or "a message."

Published every Tuesday, Wednesday, Thursday and Friday during the school year by Associated Students of Montana State University.  
Subscription Rate \$2.00 per year.

MEMBER ROCKY MOUNTAIN INTERCOLLEGIATE PRESS ASSOCIATION  
Entered as second-class matter at Missoula, Montana, under Act of Congress, March 3, 1879

Printed by the University Press

Business Manager, Dick Shirley; Associate Editors: Anita Phillips, Ward Sims, Joe Stell; Society Editor, Donna Ring; Photography Editor, Art Foley; Circulation Manager, Bill McCall.

## Chemists Get New Animal House for Laboratory Work

Those odors, or rather smells, that often saturate the halls of the C-P building cannot always be blamed on the tedious works of aspiring chemists. An equal blame is laid to the inadequate animal room of the pharmacy school.

Soon, \$18,000 worth of brick and mortar and fittings will change all this, according to Dr. C. H. Waldon, dean of the pharmacy school.

A portion of the \$300,000 voted at the last session of the state legislature is set aside to build a new animal house for the pharmacy school. The rest of the monies will go to the completion of the business administration school, new campus roads, and a green house for the forestry school.

### South Side of C-P

The overall dimensions for the new animal house are 30 by 40 feet. The construction will be added directly on to the C-P building. It will be a one-story building directly connected to the east end of the south wall.

Designed by local architects, the building will be modern in every sense. All interior walls will be of glazed brick which will facilitate easy cleaning. The interior will contain no paint.

A ramp is to be built directly connecting the pharmacology lab with the animal house for the use of pharmacology students who use animals extensively in their laboratory work.

### Modern Design

The latest advances in modern building, that of the modulating of movable walls are included in the plans. This includes all rooms with the exception of the wash-room and the feed and milling room.

### For Your Next HAIRCUT

Try the

TRAIL BARBER SHOP  
104 East Broadway

## QUAKERS TO MEET SUNDAY

The Society of Friends (Quaker) will begin a series of meetings that will start at 11 a.m. on Sundays, according to David Line, resident of Missoula. Everyone is welcome. People interested should meet Sunday at Room 318, Union building, located at 127 E. Main.

Normal squids presumably lead normal sex lives.

## FREE LECTURE

ON

## Christian Science

SUNDAY, OCTOBER 9  
At 3:15 p.m.

Student Union Theater  
All Students Are Cordially  
Invited to Attend

## Class Ads ...

ROOM FOR RENT: Single or double, for university student. On bus line. 541 Eddy. Call after five or phone 90105.

FOR SALE: '41 special deluxe 4-door Plymouth; new seat covers, good tires, heater. Call room 106 Craig, or phone 2634 after 5.

FOUND: Parker pen in J-school. Claim at Kaimin.

FOR SALE: Modern six-room house with range and refrigerator. \$10,000. To take over mortgage. Call 9-0712.

LOST: Man's cameo ring. If found call 4058 between 11 and 12 noon or 4 and 6 p.m.

FOR SALE: Man's bicycle, like new condition, basket, carrier, headlight. Hot-point apartment-size clothes drier, like new, \$12. 532 S. 6th E.

## Coed Volleyball To Offer Credit

The volleyball tournament for women will start next week for teams representing living groups and sorority houses. One participation credit will be awarded for eight hours of play. The game schedule will be posted in the women's gym. Games will start Tuesday.

The winning team in the tournament will receive a trophy. One house or living group may have more than one team. Women may play on any team but they must continue to play with the same team the entire season.

After the Show Have a

## Fitcher Coney Island

A Hot Dog With Personality

THE NEW

## PALLAS CANDY COMPANY

Next to the Wilma Theater

## For Your Week End PLEASURE

★ Dancing

★ Dining

★ Mixed Drinks

MONTMARTRE CAFE

JUNGLE CLUB

CRYSTAL LOUNGE

# Set Them Up for All The Gang at the Bigger and Better Frontier



# Lounge

On U. S. Highway 10 West of Missoula

Now Playing—

The New and Different

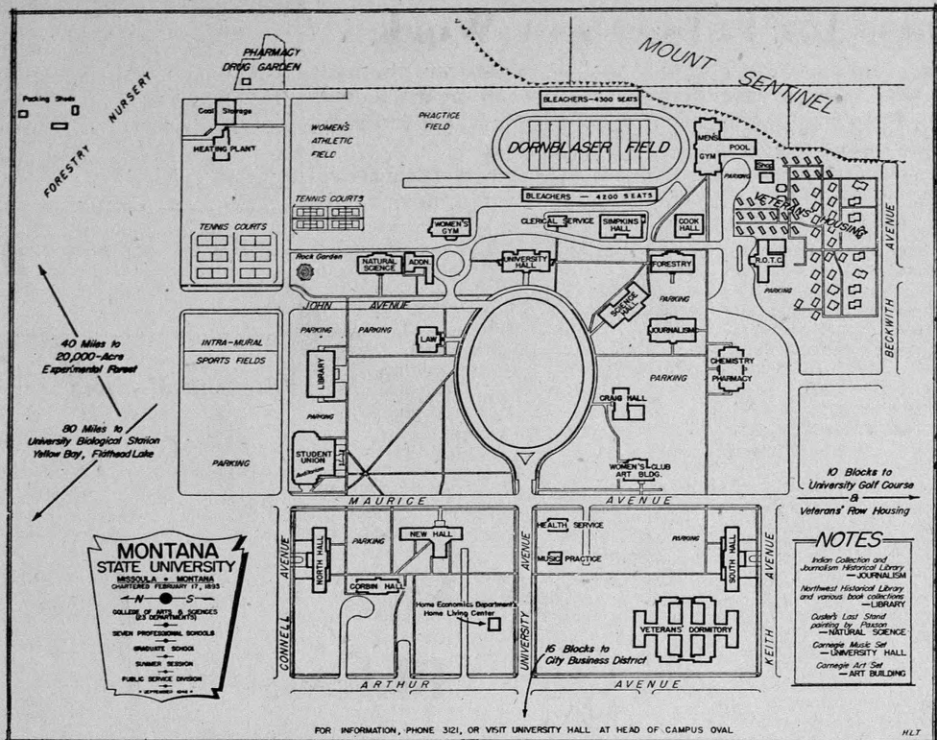
## MUSICAL DONS

Featuring Two Complete Floor Shows Nightly—Both Different





### Restricted Parking Areas



The five no-parking areas recommended to Central board by the student-faculty parking committee Tuesday are: (1) Van Buren street from the rock garden to the oval, (2) the entrance to the oval, (3) the south side of the little oval (west of the women's gym), (4) the east side of the street from the Clerical service building past Cook hall, and (5) the east side of the forestry building to the corner directly south. Also recommended were special areas for delivery and service trucks to service buildings, and bus stop areas in front of Main hall and at the north side of the main entrance to the oval.

## Society--College Level

### Sigma Kappa

Formal pledging Saturday morning was followed by a buffet luncheon. Sororities, fraternities, house-mothers, and faculty members were invited to a tea that honored the new pledges Sunday. Jane Gaethke, West Salem, Ohio, was formally pledged Monday night.

Audrey Gage, Shelby, was married Sunday. Jane Hannah, Shelby, attended the wedding.

### Sigma Nu

Actives of the chapter entertained the new pledges at a smoker Saturday night. Another fireside for all Sigma Nus is scheduled for this Saturday night. The new pledge class is planning the party

with a western theme.

Dick Conklin, Great Falls, hung his pin on Arlene Bruce, also of Great Falls.

New pledge officers for this fall are Jim Artz, Cut Bank, president; Martin Clarke, Great Falls, vice-president; Jim Gillespie, Missoula, secretary, and Danny Lambros, Missoula, social chairman.

### South Hall

Bill Brandt, Great Falls, was elected president of the hall Tuesday evening. Bob Marks, Clancy, was elected vice-president, and Francis Clearman, Helena, was re-elected as secretary-treasurer.

### Alpha Phi

Silver and bordeaux ribbons were exchanged for pledge pins at formal pledging ceremonies Monday night.

Alpha Phi actives and pledges were guests at the Phi Sig house Wednesday night for dessert and dancing.

### Kappa Alpha Theta

Mrs. Bolts, Seattle, Theta district president, was a week-end guest.

Mrs. Wilkenson and Mrs. Childs, past housemothers, were guests at the house last week during the series of open houses.

### Phi Sigma Kappa

Sunday dinner guests at the Phi Sig house were "Skip" Mitchell, Glasgow, and Rosemary Olney, Missoula.

### LAGARDE TO SPEAK

Messr. Jean de Lagarde, French consul-general at San Francisco and featured speaker at convocation Monday, will give a talk in French to French students in the Bitterroot room Monday afternoon at 4 o'clock.

Following his talk, "Life in Present-Day France," tea and coffee will be served.

### Chinese-American

Food at the

GOLDEN PHEASANT

318 North Higgins

## Play Shuffleboard



### and Relax

With Friendly Companions In A  
Friendly Atmosphere

BEER IN PITCHERS

MIXED DRINKS

At the

## NORTHERN BAR

## Pharmacy Club Sets Dance Date As November 12

The annual Pharmacy club ball was scheduled for Nov. 12 in the Florentine Gardens by members of the Pharmacy club at a meeting Wednesday night, Tony Francisco, Harlowton, president of the club, announced yesterday.

Club members appointed committees for the ball. Chairman Don Knoll, Billings, and members of the entertainment committee plan to engage a popular local band for the dance, Francisco said. Francisco will head the chaperon committee, and refreshments will be handled by Kappa Psi, men's national pharmacy honorary.

Faculty members interested in acting as chaperons at the ball are requested to contact Francisco at the pharmacy school office.

Francis C. Hammerness, pharmacy instructor, spoke at the meeting concerning a visit to pharmaceutical plants in a number of Eastern states including Illinois, Indiana, and Michigan by pharmacy school juniors and seniors. The trip will last about nine days and

has been tentatively scheduled for about Feb. 24, according to Hammerness.

## Fancy and C Grade MacIntosh Apples

95¢ - \$1.15

SPECIAL FANCY  
GIFT BOXES  
\$2.50

FLORAL  
ARRANGEMENTS  
\$1.50

Special Prices on Roses,  
Carnations and Corsages

**BITTERROOT MARKET  
AND FLOWER SHOP**  
801 South Higgins

## Furniture - Rugs

## Draperies - Crockery

## J. M Lucy and Sons

SINCE 1889

## Hold It!

Before You Buy  
Your  
Photographic  
Supplies



Stop In at McKays and Find Out  
What's New in Photography

A COMPLETE LINE OF CAMERAS,  
ENLARGERS, PRINTING PAPERS, FILMS  
AND DARKROOM EQUIPMENT

Books  
Greeting Cards  
Gifts

## McKays

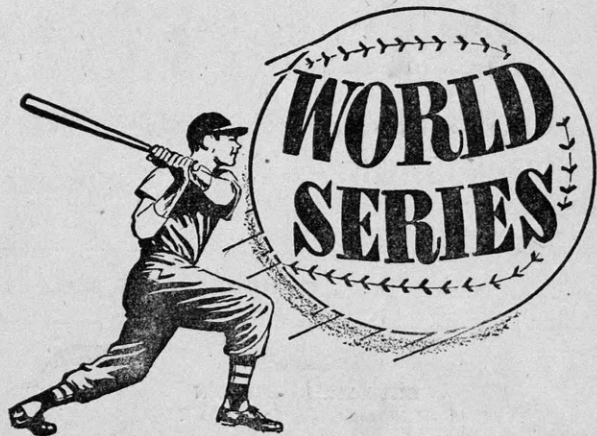
Cameras  
Kodak Finishing  
Supplies

If You Like  
Mellow  
Smooth  
Mild Beer  
Try A Can of



Missoula Brewing Co.

## NOW ON!



Starting Wednesday 10:45 a.m.

Sponsored by

GILLETTE SAFETY RAZOR CO.

3rd Consecutive Year

OVER

## K G V O

1290

CBS



## Grizzlies Leave Early For Fracas With Rams In Saturday Night Game

Hoping to repeat the Turkey Day massacre of 1947, the Grizzlies take on Colorado A & M at Fort Collins tomorrow night. Two years ago the Silvertips routed the Rams 41-7 on Dornblaser field.

An advancing storm front caused the Grizzlies to leave Missoula Wednesday afternoon. Because they left a day ahead of schedule, the team got in only two practice sessions after the Utah State game.

During the workouts, Coach Ted Shipkey emphasized defense against the Aggie T. Shipkey holds the key to a potent offensive threat in the tricky "spread" formation. This formation, which wasn't used against Utah State extensively, troubled WSC considerably two weeks ago. Using it, the Grizzlies scored once and almost scored a second time.

Like the Silvertips, Colorado A & M boasts a 2-1 record. The Rams opened their season by eking out a win over Colorado college, 14-7. Halfback Frank Faucett, 168, sparked the Rams to victory by scoring one touchdown, setting up another, and converting both times. Next, the Aggies upset Denver university, 14-13. They wanted desperately to win this one for their fine, Negro halfback Eddie Hanna, who died of a heart attack following the Colorado college tilt.

Hailed as a Cinderella team after the Denver surprise, the Aggies nevertheless were dropped 8-0 by Wyoming last week. Although they

outgained Wyoming, the Rams were beaten in the last quarter by a blocked kick safety and a 35-yard run by Sonny Jones.

Even though the starting backfield of last year's title-contending Rams is gone, the Grizzlies will have to be at their peak to win tonight. Coach Bob Davis has ample material to use in his two platoon system of substitution. Leading a line of weighty veterans are Thurman McGraw, all-conference 222-pound tackle, and guard Dale Dorrill, 205. Standout in the sophomore-studded backfield is the ace runner and kicker, Frank Faucett.

The Grizzly traveling squad for this game includes: ends—Bauer, Briney, Delaney, Doyle, Kafentzis, Korn, Oberweiser, Selstad; tackles—Cork, Duncan, Ford, Hanson, Keim, Monahan, Reed, Rothweiler; guards—Chaffin, Kumpuris, Semansky, Stewart, Volk; centers—Ken Campbell, Cook, Kukurich; backs—Byrne, Don Campbell, Hammerness, Holding, King, Kingsford, Malcolm, McCoy, Murphy, O'Loughlin, Wold.

### HAMBURGER FRY IS SET

Members of the Lutheran Student association will have a hamburger fry Sunday at 2:30 p.m.

There will be plenty of food, recreation, and a good old fashioned song fest. Those who wish to attend the hamburger fry are to meet at St. Paul's Lutheran church, corner of Brooks and Roosevelt streets, according to Roger Aspevig, Rudyard, president.

### REV. CAMERON TO SPEAK

The Rev. E. Ray Cameron, pastor of the First Presbyterian church, will speak to the University Christian fellowship at 7:30 tonight in the Bitterroot room. Refreshments and singing will follow.



Yum  
Good  
ICE  
CREAM

Ice Cream provides all the food values of milk and sugar. Its delicious taste helps put students in a happy frame of mind for afternoon classes.

Hansen's  
Ice Cream

## First Section of Duck Season Opens Today for Entire State

The ducks fly high today as the first section of a divided duck season opens. Unlike big game, with the exception of certain obviously restricted areas, the entire state is open to duck hunting.

The Flathead Indian reservation is open on migratory birds. The area is closed to white men on deer and elk. Six other major Montana game preserves—Fort Peck, Glacier, Hungry Horse, Sun River, Gallatin, Powder River—are closed to all hunting. Hungry Horse is placed under restriction this year for the first time. Scattered throughout the state are forty-four smaller preserves.

Open for early season on elk is the Grass valley area south of the Clark fork and Ravalli county west of the Bitterroot. (Already game authorities say hunters suffer from "itchy-triggeritis." Territory north of the Clark fork is not open on elk—and won't be.) Other elk areas open October 15.

High noon on the Bitterroot main channel and ancillary sloughs promises death for ducks today. Those adjoining fresh-water sloughs should be good, local enthusiasts claim. Presumably hunters will have more luck in this area during the season's first few days. Go early—is sound advice. The two-dollar duck stamp is a prerequisite. This revenue helps buy duck ponds for breeding purposes.

Daily bag limit is four ducks.

## Women's Tennis Tourney To Start

The WAA tennis tournament will start next week and the schedule will be posted in the women's gym, according to Mrs. Peggy Sarsfield, instructor in health and physical education.

Contestants will receive one participation credit for eight hours of play. The matches will consist of two out of three sets and all contestants will be notified two days in advance as to when they are to play.

Those who take part in the tournament will then have a period of two days to play off the matches. Participation credits in tennis may be obtained only by playing in the tournament.

Contestants will play in singles and doubles in the tournament and individual awards will be presented, Mrs. Sarsfield said.

### GRIZZLIES ROOT TOGETHER

A Grizzly rooting section will be on hand at the Montana State University-Colorado A & M game in Fort Collins Friday, according to Ted Eigeman, ex-'43.

A Montana section has been reserved at the game, and alums will wear ribbons to enable other alums to identify them.

## Sports Quiz

Cardinals' ballplayer hit for the cycle on July 24; in the 14-1 conquest over Dodgers, walloped a single, double, triple, and home-run, all in the same game; ended three-game Dodger series with nine hits in 15 trips at bat. Answer: **Tuesday.** Yesterday's answer: **Capot.**

Flathead are open areas. Moose and antelope drawings were held in late summer. Killings on these animals must be done under a permit.

### Student Mothers . . .

Your little boy or girl will need a snowsuit, won't he? It's colder every day. See our rayon, water-repellant, windproof, fur-lined models, sizes 1 to 6. Beautifully tailored, zipper cuffs, won't tear, spot-resistant. Matched helmet or bonnet. \$12.95 up.

### The STORK NEST

(Hammond Arcade)

THE  
NATIONALLY  
FAMOUS



RED FOX and His MUSICAL HOUNDS

On  
Circle  
Square

Park Hotel

Our Greatest  
Rib-Busting,  
Chin-Tickling  
Stage Show

. . be prepared to trick or treat!

## HALLOWE'EN CANDIES

- Large Selection
- Fresh Daily

Your Hallowe'en parties will be a big success with delicious candy treats from our Hostess Shop. Stop in today and fill your party needs!

Brighten up your table with colorful party favors from our China and Gift Shop!

HOSTESS SHOP . . . Street Floor

*The Mercantile*

Looking for Fun This Week End?

## THE KNOVELTY KNIGHTS

Are Back for Your Pleasure



## CLUB CHATEAU

5 MILES EAST OF MISSOULA

Phone Any Night to Reserve a Luscious Steak or Tasty Chicken—6062

IT'S STARTLING - GRIPPING - EMOTIONAL

REVEALING HIDDEN  
SINS OF GI'S IN ITALY

**PAISAN**

SEE! THE IMMORAL  
CONDITIONS THAT PREVAILED



STRICTLY  
ADULT  
SHOW

STARTING  
SATURDAY

**ROXY**

Students - - 40c  
Adults - - - 55c



# Eager Cubs Set For Bobkittens In Annual Frosh Football Tilt

Saturday night marks the first frosh football game of the 1949 season. The Cubs are up against an inferior Montana State college frosh team, whose coach, "Jinx" Anderson, conceded defeat when he said, "The only thing we can hope for in that first game against the Cubs . . . is that we will make a good showing."

Cub Coach Eddie Chinske has done a lot of scrimmaging with his charges, and they show speed, drive, and enthusiasm. Many university frosh are exceedingly good prospects. Those singled out as likely are:

Left end—Harold Maus, Hamilton; Bill Wagner, Monrovia, Calif.; Jack Stewart, Helena.

Left tackle — Gordon Jones, Butte; Pete Densmore, Ft. Bliss, Tex.

Left guard—Larry Beavers, Missoula; Fred Rody, Anaconda; Frank Dotz, Ronan.

Center — David Vincent, Anaconda; James Wilson, Laurel; Dick Simpson, Grand Island, Neb.

Right guard—Robert Stewart, Forsyth; Walt Laird, Miles City; William Shawy, Libby.

Right tackle — Bob Antonik, Butte; Park Densmore, Ft. Bliss, Tex.

Right end—John Holland, Ferguson Falls, Minn.; Don Garlinger, Chicago; John Bryant, John Monroe, Missoula.

Quarterback — George Vucuro-

vich, Butte; Dick Shadoan, Billings; Paulie Grein, Youngstown, Ohio.

Left halfback—Bill Baker, Polson; Bob Yurko, Great Falls; Bud Bellis, Helena.

Right halfback—Bob Graves, Billings; Dick Inks, Missoula; Ted Riemann, Columbus; Bob Craver, Butte.

Fullback—Dick Skates, Billings; Bo Laird, Miles City; Don Scheele, Saco; Don Carlson, Great Falls.

The Bozeman Bobkittens will have a return engagement with the Cubs on Oct. 21, on Dornblaser field. Reserve seats are for season ticket holders only. Other ticket sales will be confined to general admission.

# Favorites Off To Hot Start In Touchball

**PDT 26, Jumbo 6**  
**South 12, ATO 2.**

Touch football season got under way Wednesday afternoon on wet fields, as Phi Delta Theta, and South hall defeated Jumbo hall and Alpha Tau Omega, respectively. Jumbo got off to a bad start, dropping the League A game to the blue and gold of University avenue, 26 to 6. South hall's Rebels got to the top of the B league in a hurry, by downing the ATO boys, 12 to 2.

Markle led the Phi Deltis with a pair of six-point tallies. In the second quarter, Luckman connected by air to Markle for the first score of the game. Again, in

the third period, Markle snatched a TD pass, chucked by Martin. Martin also scored on an end sweep in the second quarter, and White returned an intercepted pass 20 yards for another touchdown tally in the same quarter. Also, in the third period, a Jumbo ball carrier was trapped in the end zone for an additional two points for the Phi Deltis.

Jumbo's only score resulted from a McCloskey to McMaster aerial.

South hall's Butler and Kasberg each scored once for their 12 points, while ATO linemen batted an attempted South hall pass into the end zone to prevent a Rebel shutout.

**Typewriter  
Repairing**  
**MISSOULA TYPEWRITER CO.**  
511 S. Higgins — Phone 2022



"TAKE A TIP FROM ME —  
SMOKE CHESTERFIELDS...  
THEY'RE MUCH Milder.  
IT'S MY CIGARETTE!"

*George Raft*  
STARRING IN "RED LIGHT"  
A UNITED ARTISTS RELEASE

**Always Buy CHESTERFIELD**

*They're Milder! They're TOPS! —* **IN AMERICA'S COLLEGES  
WITH THE TOP MEN IN SPORTS  
WITH THE HOLLYWOOD STARS**



## Beanie Sale Starts Monday

The much - talked - about freshman beanie will go on sale Monday at the cost of 75 cents, according to Chief Grizzly Dave Dean. It will be entirely up to the freshman class whether or not they want to wear them, start a tradition and have something to look back on.

Numerous other colleges and universities enforce the wearing of the freshman hat by such means as cutting hair and swinging paddles. Refusing to follow any barbaric methods of the state college, upperclassmen will avert any type of hazing.

Plans for a freshman-sophomore tug-of-war, testing the spirit of the younger class, at the Homecoming game, will be announced later. Hat sale will be made by Bear Paws and Spurs from booths located on the campus.

## JUMBO HOLDS COFFEE HOUR

Residents of Jumbo Hall started the first Friday night coffee hour last week. The free Joe and chow are designed to increase hall solidarity and loyalty.

## Forestry Club Receives Gift

Highlighting Wednesday evening's meeting of the Forestry club was Mrs. J. C. (Mother Evelyn) De Jarnette's gift of programs and favors from the Foresters' ball and other foresters' events since 1923.

To the surprise of everyone attending, including club president Vernon E. Sylvester, Lewistown, Mother Evelyn, when introduced as a visitor, presented the club with a large box containing the gift. She then welcomed all new freshmen, encouraging them to reap the benefits offered by the Forestry club. She related the part she and "Dad" De Jarnette have played in the Forestry club.

President Sylvester thanked Mother Evelyn for her generous gift. It is to be put on display in the forestry school.

### New Dean Introduced

The new dean of forestry, Ross A. Williams, was introduced to the club. Dean Williams, a graduate of MSU's forestry school and a former member of the Forestry club, told how good it seemed to be back home and hoped that all new freshmen would take advantage of the opportunities the Forestry club had to offer.

Prof. Fay Clark related the history concerning the club and the No. 1 attraction—the Foresters' ball. Any freshman who wishes to play an important part in the ball must show his initiative, he said. A freshman first starts out as a hired hand and if he shows promise he may get the job of a straw boss in his sophomore year. From there he goes to foreman and if he proves to be a No. 1 man, he

## Movie Tickets On Sale At Simpkins Hall

Tickets for the University Film Society are now on sale in the box office in Simpkins Little theatre, according to Tom Roberts, Missoula, business manager.

The membership price for the tickets is \$1.50 for both students and faculty, and this price includes admission to all five movies this quarter, Roberts said.

The movies and their dates are: "Shoeshine," Oct. 16; "Carnival in Flanders," Oct. 30; "Alexander Nevsky," Nov. 13; "The Long Voyage Home," Nov. 27; and "Crime and Punishment," Dec. 10.

## Cheerleaders to Tryout Today

Preliminary tryouts for all students interested in becoming cheerleaders will be at 2:15 o'clock, this afternoon in the Copper room of the Student Union, according to Eugene Kallgren, Butte, Traditions board chairman.

According to Kallgren, students from all classes are eligible for the team, although the exact number to be chosen has not been decided upon by Traditions board.

Final tryouts will be at 4 o'clock, Oct. 14. Kallgren expresses the desire for prospective cheerleaders to tryout today as further auditions will not be held until Spring quarter.

is likely to get the No. 1 job of chief push.

### Schooling of Shorthorns

Continuing, Clark told how this forestry school was the seat of short-course foresters back in the early '20s. Fay, then a member of the Forest service, was selected to teach the shorthorns, as they were called, the elements of range and timber management and control.

Joe Sieminski, Aimbridge, Pa., chief push for the 1950 ball, said that the date yet has to be selected. It will be sometime in February. He tentatively laid out the coming ball plans and committees. Preparation will begin the first of November.

## Are You Oblivious To the Obvious?

A few obvious factors have pointed out that we have an outstanding football team. Has the student body proved fully that it has the spirit? Well, it has the chance.

A "welcome home" rally has tentatively been set at 3 p.m. at the NP station, Sunday, according to Margaret Jesse, president of the Spurs. Members of traditions board will tour the dormitories, fraternities, and sororities Sunday morning to announce the definite arrival time.

# Why Pay More?

Oil . . . . . 20¢ qt.

Regular Gasoline . . . . 27½¢

Ethyl Gasoline . . . . . 29½¢

## SPUR GAS

500 EAST SPRUCE

Acclaimed by CRITICS & PUBLIC!

# RUBINOFF

and his VIOLIN

IN A CONCERT THE WHOLE WORLD LOVES!

MISSOULA TODAY  
Student Union  
Auditorium  
Sponsored by  
JUNIOR  
Chamber of  
Commerce

Matinee and Evening Concert  
Evening \$1.80 gen. adm., tax included  
Reserve, \$2.40 tax included  
Matinee—\$1.80 general admission

PRESENTING

a new *Sentheric* perfume  
made in FRANCE



## Repartee

You'll love Repartee. It's so witty, so expansive and it lasts so beautifully. An utterly new and moving fragrance experience. Says such lovely things about you, and such a flattering gift. In de luxe presentations; also in purse-size flacons.

½ oz., \$8.50, 1 oz., \$15.00  
2 oz., \$25.00  
1 dram Replica, \$2.50  
2 dram Replica, \$4.50  
plus tax

Hollyoak Drug Co.

H. F. FLAHERTY

6th and Higgins South

ANDERSON  
TRANSFER  
General Transferring  
and Trucks for Hire  
PHONE 5462

For Campus Wear—

## Cords

- WASHABLE
- TAN OR CREAM COLOR
- ALL SIZES

3<sup>95</sup> TO 6<sup>50</sup>

## Levi's

- MEN'S OR WOMEN'S
  - ALL SIZES
- Men's Women's

345 395

Also Levi Jackets

**Westerners**  
MEN'S OUTFITTERS  
INC.

451 North Higgins

The Best in Steaks—

## Guaranteed

## 4 B's Cafe

1359 WEST BROADWAY

## Stay smart and dry...as millions do!



## ALLIGATOR

RAINWEAR

18.50 to 34.50

See why Alligator is the rainwear brand most in demand! Yours in all-weather water repellent and waterproof coats, in a wide array of exclusive fabrics, styles and colors!

## MEN'S SHOP

Florence Hotel Bldg.

Just for You  
**Your College Counselor**



See Miss Griffith model a lovely striped-fulura, basket-weave Sacony with fly away collar, push-up sleeves, and a semi-flared skirt Saturday from 12 to 5:30. Come in and see our line. So right for campus or date wear.

SEE YOU ON SATURDAY

*Cecil's*