

University of Montana

ScholarWorks at University of Montana

Montana Kaimin, 1898-present

Associated Students of the University of
Montana (ASUM)

4-25-1950

The Montana Kaimin, April 25, 1950

Associated Students of Montana State University

Follow this and additional works at: <https://scholarworks.umt.edu/studentnewspaper>

Let us know how access to this document benefits you.

Recommended Citation

Associated Students of Montana State University, "The Montana Kaimin, April 25, 1950" (1950). *Montana Kaimin, 1898-present*. 2569.

<https://scholarworks.umt.edu/studentnewspaper/2569>

This Newspaper is brought to you for free and open access by the Associated Students of the University of Montana (ASUM) at ScholarWorks at University of Montana. It has been accepted for inclusion in Montana Kaimin, 1898-present by an authorized administrator of ScholarWorks at University of Montana. For more information, please contact scholarworks@mso.umt.edu.

ABER DAY!

Wide-Open Aber Day Race Boasts Hectic Background

The 73 entries in the 1950 Aber Day handicap entered the stretch morning when the Main hall tolled. The record field race for campus posts is the result of a series of events, occurring in rapid sequence, that may drastically alter ASMSU's political page.

Things started to pop April 7 with the announcement that the Independent Students association had folded as an active campus political group. With the collapse of the independents, the Greeks were left in sole command of campus politics.

Open Slate

During the subsequent week, after much searching of soul, the fraternity council threw the elections wide open so far as the fraternities were concerned. That was Tuesday evening. Wednesday morning, Panhellenic followed the secular lead and removed all restrictions as to the number of candidates from the women's clubs.

Thursday, April 13, the announcement that a new political group, the Unity party, had organized and was running a slate of the principal ASMSU offices. City candidates were chosen from both Greeks and Independents and the party adopted the non-partisan.

Welcomed with mixed bouquets and blasphemy, the Unity group

adopted a platform calling for a revamping of the campus government, affiliation with the National Students association, establishment of a long-range budget-planning committee, that would inform the student body on the over-all ASMSU financial picture, and the setting up of an application and merit system in the naming of student board members.

The two top men in each of today's races will enter the general elections set for two weeks after Aber day. Candidates running for the top ASMSU posts are, for president: Bob Anderson, Missoula; George Fox, Laurel; Forest Paulson, Great Falls; and Jim Wylder, Havre.

Business manager nominees are Jim Murphy, Missoula, and Tom Payne, Livingston, both men assured of entering the runoffs.

Helena Woman Takes Rifle Shoot Record

Lewistown, April 24.—(UP)—A Montana woman has smashed the women's world's rifle shoot record. The new unofficial record-holder is Mrs. Elsie Allen of Helena. Petite Mrs. Allen scored 388 in 20 shots prone and 20 shots standing in the state rifle shoot at Lewistown. Mrs. Allen's score was 12 points better than the record set a year ago by Ruth Morgan of Takoma Park, Md.

MSU Receives Rockefeller Grant for Arts Roundup

Montana State University is the recipient of a \$4,000 annual grant from the Rockefeller foundation, announced George Selke, chancellor, Saturday. The grant has been made for two years and is to be used for the Northern Rocky Mountain Regional Arts Roundup, scheduled this year for July 24 to Aug. 8.

Joseph Kinsey Howard, Montana author, has been named director of the Roundup. Bert Hansen, public service division and English department will be assistant director.

Cultural Activities

The Arts Roundup will be a gathering together of all cultural activities developing in Montana and the northern Rockies area from fine arts and crafts to writing, drama, music, and western dancing.

Monday July 24, has been set as the starting date of the Roundup at the university campus. Continuing until Aug. 8, master classes, lectures, workshops, visual demonstrations, tours, and entertainment touching nearly every area of cultural interest will be featured.

A tentative calendar of events lists special arts and crafts exhibits, the Montana Institute of Arts show, master classes in landscape painting, art appreciation lectures, and a crafts workshop.

Music Week

Musicians attending the Roundup will find the Montana Music Week and high school music camp

scheduled. In addition to these, recitals by visiting artists, and the annual high school orchestra, band, and choral concert are listed.

Journalists will attend the Montana Writer's conference while those interested in drama will participate in the Montana one-act plays.

For diversion, participants will be offered tours to Virginia City and to Three Forks for the Lewis and Clark-Missouri river pageant. Other recreation will be found in the modern American and European film programs and a western dance workshop.

The polls will open this morning at 11 o'clock and remain open until 3 p.m. Activity cards must be presented when ballots are requested. All active members of ASMSU may vote for the following ASMSU officers: president, vice-president, business manager, and secretary.

Lawyers Initiate New Fraternity On MSU Campus

A new chapter of Phi Alpha Delta, national legal fraternity, was started on the campus Friday.

Installation and initiation of the chapter was conducted by a team from the chapter at the University of Idaho, and the principal speaker during the ceremonies was Colorado Supreme Court Associate Justice Edmonds.

The installation and initiation ceremonies Friday afternoon were followed by a banquet at 6 p.m. Gene McGinty, Great Falls, who had been a member of the chapter at the University of Colorado before transferring to MSU, was elected temporary president.

The following are members of the new chapter: Cecil Zezula, Whitehall; Robert Young, Helena; Jack Yardley, Livingston; Jeremy Thane, Hamilton; Stanley Sorenson, Helena; Clifford Schleusner, Three Forks; Gerald Petersen, Dagmar; Lee Overfelt, Missoula; LeRoy McKinnon, Missoula; Dale McGarvey, Kalispell; Keith Johnson, Butte; Russell Fillner, Forsyth; Robert Ehlers, Missoula; Robert Conwell, Red Lodge; Joe Blaisdell, Minot, N. D.; Gerald Beaver, York, Neb.; Thomas Payne, Livingston; Robert McGee, Butte; John McKeon, Anaconda; and Reid Collins, Great Falls.

Approval Is Given For Three Projects

Budget approval has been given for a small amount of remodeling of physics classrooms on the second floor of Craig hall; the construction of some library tables for the basement library in the law school; and the grassing in of the area adjacent to the Clover bowl, T. J. Swearingen, maintenance engineer, announced.

"Work on these projects will commence as soon as the materials arrive," Swearingen said.

To Appear in 'Barber of Seville'



Appearing in leading roles of "The Barber of Seville," all-school production set for May 16, 17, and 18 in the Student Union theater are, left to right, Jim Callahan, Colleen Haag, and Neil Dahlstrom. The production will be staged jointly by the School of Music and the drama department.

Four Candidates Announce Views on Political Issues

Queried yesterday as to the stand they take on several campus political issues, the four candidates for the ASMSU president's chair replied as follows.

Bob Anderson, Missoula, does not favor affiliation with the National Students association.

"I do not think it is worth the \$200 annual dues," Anderson said.

Improvement Needed

"Our principal need is information on methods of improving our campus government and I think we can get it just as well by writing to other colleges as we could in a national organization."

Anderson favors a thorough investigation of the ASMSU budget and then, if necessary, a revision of the present percentage system. He also favors an investigation of the possibilities of reorganizing campus government.

No Reformer

Anderson said that he was "certainly no reformer," but that on the athletic situation, "the students should be cut in. The big trouble at present is that the students aren't well enough informed."

George Fox, Laurel, approves affiliation with the NSA "if finances permit it. However, since the Pacific States Presidents association has no dues, we should stay there if our finances are too tight."

Fox feels that the students should be better represented in

their campus government but favors accomplishing this by the addition of delegates-at-large to the present Central board rather than by the complete reorganization of the governmental setup.

Fox also expressed approval of an investigation of the ASMSU budget.

Paulson and NSA

An investigation of the potentialities of NSA and possible affiliation was approved by Forest Paulson, Great Falls. Paulson also favored a budget investigation, bringing all information into the open so that all students would be aware of the situation.

"I do not advocate any cuts in activities," Paulson said. "It is through our activities that we become known to our alumni and to prospective students of MSU. I believe that we should have a well-rounded activity program consisting of athletics, debate, intramurals, and dramatics."

On government reorganization, Paulson feels that there is no urgent need at the present time for reorganization.

Student-Faculty Board

Paulson would like to see a student-faculty coordinating board composed of the presidents and vice-presidents of the classes and the mayor of Splinterville to study problems of student interest such as freshman orientation, afternoon

(please see page four)

Cast Selected for Comic Opera 'Barber of Seville'

Comic opera will come to life on the MSU stage during Interscholastic week in the form of "The Barber of Seville."

Cast in the major roles of this all-school show are Colleen Haag, Neil Dahlstrom, Jim Callahan, and George Lewis.

The Rossini opera will be sung in English on May 16 and 17 for students and townspeople, and on May 18 for Interscholastic visitors. It is being produced jointly by the drama department and the music school.

Miss Haag, Missoula, a senior in the School of Music, will play the

part of Rosina. She is a soprano and this is her first leading musical role, although she played in the Masquer production, "There Shall Be No Night."

Dahlstrom As Figaro

The part of Figaro in the light opera will be sung by Neil Dahlstrom, a baritone from Missoula. A junior in the music school, Dahlstrom last appeared as the Mock Turtle in "Alice in Wonderland."

Cast as Dr. Bartolo is Jim Callahan, Missoula. A bass buffa, he is a veteran of several Masquer productions. In "Alice in Wonderland," Callahan played the part of the White Knight, and he appeared in the last all-school show—"The Desert Song"—and "Life With Father."

George Lewis from Missoula will sing the part of Count Almaviva. Lewis is a tenor and also played in "The Desert Song."

Huchala As Basilio

Another veteran Masquer, Gene Huchala of Libby, a bass, will play the part of Basilio. He appeared last year in the Masquer productions of "Winterset" and "Volpone."

The part of Fiorello will be played by Lane Justus, Hagerman, Ida. He played as Tweedledee in "Alice in Wonderland."

The other female role will be sung by Alice Byers, Missoula, a dramatic soprano, who will portray Bertha.

The Officer of the Guard will be Vern Johnson, Hilger, a baritone. This is his first role at MSU.

Personalities and Politics

Aber day is with us again. Sandwiched in among some of the more hilarious activities of this spring rite is the Aber day primary. The polls will be open from 10 a.m. to 3 p.m. and when all the ballots have been counted, two of the candidates for each campus office will square off for the general election two weeks hence.

Some time during those five hours of voting every active member of ASMSU should take a few minutes to cast his ballot for the persons who will be in control of Montana's student government during the coming year.

Campaigns and ballyhoo provide plenty of excitement during pre-election days. When it comes to the actual voting, every person with

a ballot in his hands should stop and consider whether there is more behind a candidate than just a noisy campaign.

The field of student government is necessarily restricted but within its bounds, it can do much for the betterment of campus activities. The selection of student officers should depend on more than personality and campaigns, it should depend on platforms and principles.

When you vote, think a bit on background and actual qualifications of the candidates. Consider whether they advocate a definite program or whether they are running merely to be in the thick of campus politics. Cast your ballot accordingly.—D.G.

Letters to the Editor . . .

FITZGERALD DOUBTS SELKE

Dear Editor:

It seems quite apparent that someone should let you and your belligerent and narrow-minded staff know some of the facts about Dr. Vande Bogart and Northern Montana college as seen through the eyes of a person who has attended that college and dealt with Vande Bogart personally.

In my estimation, Chancellor Selke's recent statement that 15 of the 22 staff members of NMC definitely approve the ousting of Vande Bogart has been highly exaggerated; just as was the announcement that three other unit presidents would resign if Vande Bogart

wasn't relieved of his position. If 15 of the 22 did pledge their support to Selke, it was obviously done to save their own necks from the same axe that got Vande Bogart and not for the reasons stated by "Honest" Selke.

I attended NMC and dealt with Vande Bogart personally as he was my advisor. I received more personal attention from Vande Bogart in that one year than I have had at MSU in my two years here or hope to get before I graduate.

Since when, Mr. Graff, are you, I, or anyone else above using whatever political influence at our disposal in attaining whatever gains may be possible? And what cor-

rupt Montana politician is above doing something in return to feather his own nest?

Contrary to your statement that Vande Bogart doesn't have the support of his own bailiwick, the people of Northern Montana are doing everything in their power to see that Vande Bogart is left as president of NMC to carry on the fine job he has done in the past two decades.

Sincerely yours,
W. J. Fitzgerald
Jumbo hall.

(Letter cut—Editor.)

UNITY PRAISED BY VICK

Dear Editor:

Please find below an open letter to the Unity party. This letter is being submitted without the party's knowledge or consent and merely expresses the author's sincere beliefs.

My best wishes for your complete success in the coming campus political campaign.

It seems to me that even on a campus as politically lethargic as this one, students cannot fail to see that those candidates who are willing to forsake presupposed "political" bonds in the interest of better government are those most worthy of the offices in question.

In order to insure harmony in the governing body, it is my sincere wish that the students will back you wholeheartedly; that the Greeks and unaffiliated students alike will find at last a common ground upon which they may meet and become united in a live, genuine, and sincere student government such as the Unity party represents to me.

Yours for an upset that will make history on the MSU campus.

Sincerely,
Madison H. Vick



MEDO-LAND DAIRIES BOX 849 MISSOULA, MONTANA

New Home of Full Flavored

MEDO-LAND MILK and CREAM



A New
Friend for
Your Car

Missoula's Newest
Retail Outlet

Just opened last Saturday. Come in and see our new, modern station with all the room in the world at our pumps. Friendly service and extra attention at Missoula's new Oval E station.

Special Offer

Monday through Friday only, we are offering a wonderful Oval E lubrication free with every oil change at no extra cost. Remember, this week only.



ORANGE STREET
AND SECOND

ROY HVAL

Stop On Your Way Across Town

Carter Oil Co.



The Best
Brew
In the West

Highlander
PILSENER
BREW
Missoula Brewing Company

The MONTANA KAIMIN

Established 1898

The name Kaimin (pronounced Ki-meen) is derived from the original Selk Indian word, and means "something written" or "a message."

Published every Tuesday, Wednesday, Thursday, and Friday during the school year by Associated Students of Montana State University.
Subscription Rate \$2.50 per year.



REPRESENTED FOR NATIONAL ADVERTISING BY

National Advertising Service, Inc.

College Publishers Representative

420 MADISON AVE. NEW YORK, N. Y.

CHICAGO • BOSTON • LOS ANGELES • SAN FRANCISCO

MEMBER ROCKY MOUNTAIN INTERCOLLEGIATE PRESS ASSOCIATION

Entered as second-class matter at Missoula, Montana, under Act of Congress March 3, 1879

Printed by the University Press

55

Editor, Don Graff; Business Manager, Ward Fanning; Associate Editor, Shirley McKown, Bill Hugh, Cyrus Noe, Dick Wohlgenant; Society Editor, Jewell Beck; Photography Editor, Al Widenhofer; Circulation Manager, Marvin McArthur.

DEAN SMITH TRAVELS

Theodore H. Smith, dean of business administration, will attend the meeting of the American Association of Collegiate Schools of Business in Cincinnati Thursday, Friday, and Saturday.

This is a meeting for all the deans of business administration schools. Dean Smith left last Thursday for the meeting.

RECEPTION FOR ARTISTS

A reception will be given tonight in the Bitterroot room for Community Concert artists, including Kurtz and Leo Nadelman. The reception will begin immediately after the concert tonight, the Music club handling the arrangements, according to Bea Fie, Bozeman.

Today is Aber day.

THE BEST BREAD

YOU EVER TASTED OR TOASTED!



Baked in Western
Montana's
Most Modern Bakery
BON TON

MISSOULA

Bon Ton
Enriched
BREAD

Protects Your
Family's Health

ANDERSON

FOR ASMSU PREXY

- ★ He Will Act for YOU
- ★ He Knows YOUR Needs
- ★ He Will be YOUR Student Voice
- ★ He Desires YOUR Vote

We hope you'll vote for Anderson
on Aber Day. But more than that,
we hope you'll vote.

(Paid Political Advertisement)

MSU Swimwomen Sweep Annual Meet with MSC

Montana State University women swimmers won all first events totaled a score of 42-15 against Montana State college women Saturday in the first intercollegiate men's swim meet ever held here. Winners in the six events included:

100-yard free style—Jamie Brennan, Missoula, MSU; Yvonne Kind, Missoula, MSU; Louise Carlson, Missoula, MSU; time 12.5 seconds.

200-yard breaststroke—Pat McDonald, Missoula, MSU; Ruth Samson, MSC; Yvonne Kind, Missoula, MSU; time 15 seconds.

400-yard backstroke—Deanne

Parmeter, Plains, MSU; Joyce Hardin, Billings, MSU; Ardyth Tallman, MSC. Time 32 seconds.

40-yard free style relay—Beverly Burgess, Missoula, MSU; Janice Roser, MSC; Pat McDonald, MSU. Time 25.9 seconds, regarded as very fast for the university plunge.

80-yard free style relay—MSU team (Burgess, Brennan, Peg Griffith, Williston, N. D., Pat Prendergast, Kellogg, Ida.) time 49 seconds; MSC (Roser, Miller, Tallman, Samuelson) 53.5 seconds.

60-yard medley relay—MSU (Parmeter, McDonald, Burgess), first, time 42.5 seconds. MSC (Tallman, Samuelson, Roser) second; time 45.4 seconds.

Starter was Eileen Polk, Williston, N. D.; clerk of course, Dianne Dragstedt, Missoula; announcer, Doris Peterson, Missoula; timers, Mary Lee Powell, Estelle McFarland, Valarie Angle, all of Missoula, and Susan Kuehn, Helena.

WANTED: ONE CHEMIST

Applications for a position as chemist for the Rocky Mountain laboratory at Hamilton, are desired by the placement bureau, according to Mrs. Peggy Leigh, secretary.

A bachelor's degree in biology, with a minor in chemistry, or a degree in chemistry, is necessary, with some course work in biology.

No practical experience is needed, Mrs. Leigh said.

Tennis Team Takes Two

Karlin Says WSC Fracas 'Most Unsportsmanlike'

BY PAT McLATCHY

The Montana State University tennis team won its fifth and sixth straight victories of the 1950 season over the week end.

Coach Jules Karlin described Saturday's 5-0 conference victory over Washington State college at Pullman as the "most unsportsmanlike" meet he has ever attended.

"WSC attempted to avert defeat by the unethical maneuver of 'juggling' its line-up," Karlin said. He said that Clarence Powell was moved from number four to number two as an obvious sacrifice. "WSC also violated a Northern Division regulation by refusing to exchange doubles line-ups at the start of the match," Karlin said.

Haill interrupted the matches during the day. After the first interruption, WSC was reluctant to resume play. Bruce Maclay, Grizzly manager, had to commandeer some brooms and lead a cleaning squad to get the courts ready for play.

When the next downpour interrupted the match, the Grizzlies had won three singles and were in favorable positions in the other two. "At the scheduled time for the resumption of play, WSC 'stalled' and refused to resume play later in the afternoon or Sunday, although the MSU team formally offered to remain in Pullman through Sunday." Therefore the two unfinished singles went to the Grizzlies.

Wayne Cumming, Helena, displayed superior technique in his

win over Jim Witt, number 1 Cougar player, 6-4, 6-4.

Coach Karlin seemed quite disgusted with the whole situation. He said, "WSC was more resourceful in its off-court maneuvers than it was in play against a superior Montana team."

The win over WSC was Montana's first conference victory of the season and the second consecutive win over the Cougars. The Grizzlies won last year 4-3.

IN SPOKANE

Friday, the Grizzlies won all but one match against the Gonzaga Bulldogs in Spokane. Gonzaga's big number one man, Joe Brasch, played well to defeat Montana's Cumming. Brasch's booming first service was almost untouchable and his forehand was hard and accurate.

Bill Jardine and Bob Nogler both

had to come from behind to win their matches.

Friday's results:

Singles—Jardine defeated Swartz 6-2, 12-10; Bob Kramer defeated Ernie Bentley, 6-4, 6-3; Bob Holmstrom won from Paul Russell, 6-2, 6-0; Nogler defeated Al Waye, 7-5, 6-0.

Doubles—Cumming and Nogler defeated Brasch and Swartz, 3-6, 8-6, 6-3; Giff Martin and Jim Wylder won from Bentley and Waye, 4-6, 7-5, 6-0.

Saturday's results:

Singles—Cumming defeated Witt, 6-4, 6-4; Kramer won from C. Powell 6-0, 6-2; Jardine was ahead of Jack Richardson 8-6, 4-5; Holmstrom and John Hazelwood were 4-6, 4-3; and Nogler defeated Jim Gilliland, 6-2, 6-2.

Attend the dance tonight.

**It's Better
Dry Cleaning
DIAL 2151**

FLORENCE LAUNDRY

Try—

**Our Special Priced
Noon and Evening
Meals - - 50¢ and 75¢**

Buy—

**Our Convenient \$5
or \$10 Meal Tickets—
Good Anytime**

HIGH SCHOOL CANDY SHOP

Across from High School

MEDIUM-SIZED CHUCK LITTLE

Would Like to Be YOUR Representative
To Store Board

Vote — Vote — Vote

(Paid Political Advertisement)

Antone (Holly) Hollinger

The Sophomore's Sophomore
for Soph Delegate

(Paid Political Advertisement)


IT'S LAUGH AT FIRST SIGHT... WHEN



JOHN LOVES MARY

New hit from
WARNER BROS!

RONALD REAGAN · JACK CARSON · EDWARD ARNOLD
VIRGINIA FIELD · PATRICIA NEAL · DAVID BUTLER
DIRECTED BY JERRY WALT



SHOCKPROOF

with PATRICIA KNIGHT
A COLUMBIA PICTURE

Starts Tues. (Stu. 45¢ with tax) **RIALTO**

I-M Softball Goes Into Second Week With Game Today

Intramural softball goes into its second week of league play today when Jumbo hall takes on Sigma Nu at 4:15 in the Clover bowl.

The teams leading their leagues are: League A, Corbin hall and Alpha Tau Omega; League B, South hall and SAE. Each team has one win and no losses.

Teams playing this week at 4:15 on the Clover bowl: Wednesday, Sigma Chi vs. Phi Sigma Kappa; Thursday, Row houses vs. Theta Chi; Friday, Phi Delta Theta vs. Independents.

Officials' schedule: Tuesday, Bill Martineson and Walt Hantsman; Wednesday, Dale Conover and Ralph Ripke; Thursday, Ed Sullivan and Cyrus Noe; Friday, Chuck Peck and Dick Simpson.

'SLIME' ON SALE TODAY

"Slime," the revamped, semi-deodorized 1950 version of Campus Ravings, will be on sale on campus at 8 a.m. today. Theta Sigma Phi, women's journalism dolly-tattooing group, asks all those interested in the latest dredgings to tuck two bits as well as a bottle opener in their jeans when they trot up to the campus.

DAMAGED CLOTHES Can Be Beautifully REWOVEN



BEFORE AFTER

Prompt Service
Reasonable Price
Written Guarantee

For more information ask
hedda mohl's Authorized Agent:

City Cleaners

JOHN PATTERSON

610 S. Higgins Phone 6614

Let's Trade Tires!

AT OUR

FIRESTONE SALE . . .

\$9.95

Plus Your Old Tire

Collin's Texaco

HIGGINS AT SOUTH SIXTH

Federal Tax Not Included



*If You're Looking
For the Best*

Vote . . .

PORKY PAULSON ASMSU President

- ★ Reliable
- ★ Experienced
- ★ Qualified

*The Candidate That Believes Holding and
Freeman Did a Good Job*

(Paid Political Advertisement)

Stanford Wins Sweepstake Cup at Speech Meet Here

Stanford university of Palo Alto, Calif., won the sweepstakes trophy Saturday night at the Montana Northwest Intercollegiate Speech tournament conducted at Montana State University.

MSU placed second in competition for the sweepstakes award and Gonzaga university placed third.

Stanford's debate team, composed of Forest Barr and David Leavitt, won first place. Gordon Thatcher and Arland Ginn, representing Ricks college, were second in debate. Stanford took the negative view of the question "Resolved: That the United States should nationalize the basic non-agricultural industries."

Bonnie Lu Perry, Havre, won first place for MSU in oral interpretation while Alice Voges of Pacific university placed second.

Frank Lockman, 54-year-old senior from Willamette university, won the extemporaneous speaking trophy. Albert Mann of Gonzaga

university placed second.

The trophy for original oratory went to John Hopkins of Gonzaga university. Don Lichtwardt, Helena, took second place for MSU.

Four plaques were awarded to schools having a chapter of Tau Kappa Alpha, national honorary speech fraternity. These Wachtel awards, given to the University chapters by the national chapters were presented to Willamette university for outstanding work in extemporaneous speaking and to Pacific university for high honors in debate. Pacific university also won the Wachtel sweepstakes award. In oratory, Lichtwardt captured the fourth plaque for MSU.

Prof. Ralph Y. McGinnis, director of speech activities at MSU, presented the awards following the finals in debate Saturday night in the Student Union auditorium.

SWIM HOURS FOR WOMEN SET

Recreational swimming hours for women are from 4 to 5:30 every Wednesday afternoon, Mrs. Erma Pritchard, assistant director of health and physical education, has announced. Participation credit is awarded for eight hours of swimming.

Don't forget to vote.

Corner

Cigar Store

- PIPES
- CIGARS
- CIGARETTES
- TOBACCO
- FISHING SUPPLIES

HIGGINS AND MAIN

Grizzlies Duel Bobcat Tennis Team Today

The Montana State University tennis team will be after wins seven and eight today and Wednesday at 2 p.m. Its opponents will be the Montana State college Bobcats.

At number one for MSC will be Dick Chauner, Bozeman, who is playing his fourth year for the Bobcats. Wayne Cumming will play him this afternoon and Bob Kramer will meet him Wednesday.

Number two Bobcat will be Tom Waldo, Darby, two-year letterman. Bill Jardine and Bob Holmstrom will alternate against him. At three will be Ray Cummings, Helena. Holmstrom and Bob Noller will alternate against him. Bob West nad Jack Kramer round out the MSC crew.

Bob Beck is the Bobcat coach. The Bobcats haven't won in this series since it was resumed in 1947.

Debaters Leave For West Point National Tourney

Five debaters left Sunday afternoon for West Point to compete in the National Championship Debate tournament to be conducted April 27-29.

The five Northwest debate champions who will participate in the tourney are Dean Jellison, Kalispell, debate captain; Don Lichtwardt, Helena; Jim Lucas, Miles City; Tom Payne, Livingston; and John Spielman, Butte.

During the 1949-50 school year, these varsity debaters have won 38 arguments while losing only 4.

Before returning home the group will travel to Evanston, Ill., to engage Northwestern university in a debate. Another argument is scheduled with the University of Chicago.

Last year's squad placed ninth in the national tournament.

MSU Teacher Output Steadily Increasing

Montana State University's production of teachers has increased steadily since 1947.

In 1947, 68 students were graduated and entered the teaching profession. This year, 199 graduates will become teachers. Next year an estimated 250 teachers will be graduated by MSU.

The lowest production of teachers from MSU in the past fifteen years for a single year, was 19 in 1946.

Class Ads . . .

TYPEWRITERS FOR RENT: New and late models, standard and portable, payable in advance or charged to Mercantile charge account; initial rent paid can be applied on purchase. Commercial use, \$3.50 per month, 3-month rental only \$10; for student use, \$3 per month, 3-month rental only \$7.50. Rentals also available in adding, calculating machines and cash registers. M. M. CO. BUSINESS MACHINES Sales, Service and Supplies, 225 E. BROADWAY, phone 2111. 32-tfc

FOUND: Pen, cigarette lighter. Owners may identify at Dean Castle's office. 99-nc

FOR SALE or trade: 1946 45" Harley-Davidson on used car. Contact Bob Ziegler at prefab No. 13. 99-4tc

LOST: Small gold pencil (red jewels). Call Lillian Larson, 6406. 99-tfc

FOR SALE: 1936 Chev. Good condition. Price \$200. Mel Yuhas, 33 Carbon. 99-nc

JOHN R. DAILY, Inc.

Packers of Daily's Mello-Tender HAMS - BACON and SAUSAGE

Wholesale Distributors of FRESH and CURED MEAT and MEAT PRODUCTS
John R. Daily, Inc.

Phones 5646-3416
115-119 West Front

Four Candidates

(continued from page four)

convocations, and the present grade-curve system.

Paulson believes that committee heads should be appointed not only on ability but also on past experience on the particular boards they will head. He believes the result would be more efficient committees.

Budget Revision

Jim Wylder, Havre, favors membership in the National Student's association and a thorough investigation of the ASMSU budget with revision if necessary.

"In student government," Wylder said, "I would like to see delegates chosen on a living-group rather than a class basis."

Wylder favors an application-merit system for the selection of student members of ASMSU and university committees. He stated that his general stand was that of the Unity party platform.

GILLETTE TO REPRESENT

Professor A. S. Gillette of the State University of Iowa will represent MSU at the inauguration of Dr. John Raymond Chadwick as president of Iowa Wesleyan college on May 11. Professor Gillette graduated from MSU in 1928.

Alaska is larger than Texas.

STUDENT UNION ACTIVITIES

Student Union activities for week:
Tuesday—Last Community concert of season in auditorium at 8:15
Wednesday—Folk dancing 7:30 p.m. in C room.
Thursday—Montana Wildlife federal movie 8 p.m. in auditorium.

'THE ROAD AHEAD' SLATED FOR ECON CLUB

Martin Farris, Troy, will rev "The Road Ahead," by John F. Kennedy at a meeting of the Economics club Wednesday at 7:30 in Old Science. The club is being formed by students who have at least 20 credits in economics.

Haitians speak French.

CURRY'S

Meals

Bakery

Fountain

307 N. Higgins Ph. 686

Elmer Shea's Double Front

Presents
Delicious
"CHICKEN
in the
JACKET"

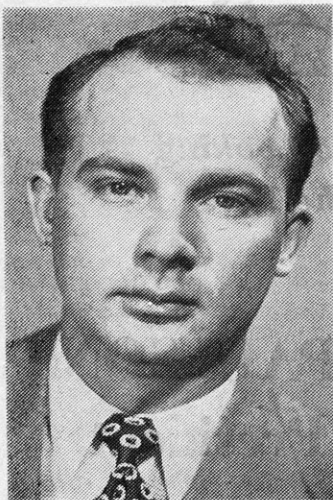
- LIQUORS
- WINES
- BEERS

121 WEST RAILROAD

On Aber Day . . .

Vote for
GEORGE GOGAS
Store Board

(paid political advertisement)



George
FOX
for
ASMSU
President

The Man Who Can Do the Job

EXPERIENCE:

1. Two years on Central Board
2. MSU representative at PSCA conference in Sun Valley
3. Student Union Executive Committee
4. Chairman, Miss Montana judging committee
5. Senior Varsity Track Manager

(paid political advertisement)

Aber Day Special . . .

Grandpa's "li'l brown jug"

Endorsed by Smokey Mountain Boys
Paint 'Em to Suit Yourself

FOUR BITS

SCHMID'S Hardware

131 East Main

Vote

CALLIE HECTOR

for ASMSU Secretary

(Paid Political Advertisement)



THE CELEBRATED
BUDWEISER CLYDESDALE

Don't miss this magnificent hitch of eight world-famous Champion horses . . . weighing an average of 2000 pounds each . . . all pulling a huge, glistening wagon . . . going through difficult maneuvers at the flick of a rein. They're a sight that all your family will much enjoy and long remember. Don't miss them! SEE THEM ON THE STREETS OR AT . . .

WHERE

Main and Pattee

WHEN

May 6, 7, and 8

Budweiser
LAGER BEER



There's nothing like it . . . absolutely nothing
ANHEUSER-BUSCH, INC. . . . ST. LOUIS, MO.

Zip Beverage Co.