

University of Montana

ScholarWorks at University of Montana

Montana Kaimin, 1898-present

Associated Students of the University of
Montana (ASUM)

2-20-1952

The Montana Kaimin, February 20, 1952

Associated Students of Montana State University

Follow this and additional works at: <https://scholarworks.umt.edu/studentnewspaper>

Let us know how access to this document benefits you.

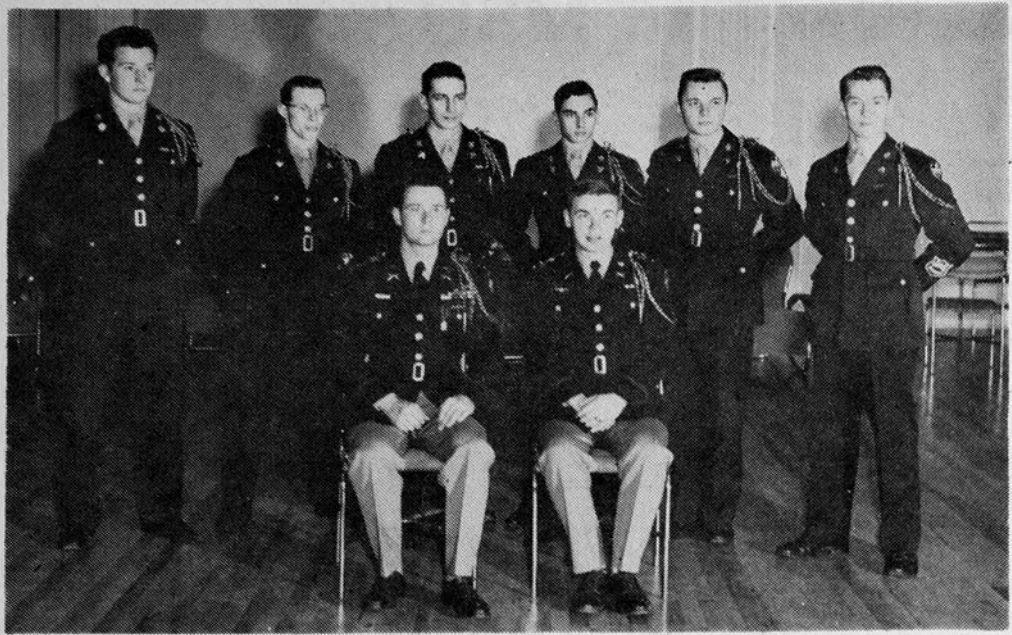
Recommended Citation

Associated Students of Montana State University, "The Montana Kaimin, February 20, 1952" (1952).

Montana Kaimin, 1898-present. 2774.

<https://scholarworks.umt.edu/studentnewspaper/2774>

This Newspaper is brought to you for free and open access by the Associated Students of the University of Montana (ASUM) at ScholarWorks at University of Montana. It has been accepted for inclusion in Montana Kaimin, 1898-present by an authorized administrator of ScholarWorks at University of Montana. For more information, please contact scholarworks@mso.umt.edu.



New officers have been elected in Pershing Rifles. The new staff officers, back row, left to right, are Melvyn Ryan, Carter; Bill Dankers, Missoula; Gerald Guettler, Missoula, new captain; Bob Jasken, Kalispell, new executive; Byron Lahr, Missoula; and Neal McCurdy, Missoula. Retiring staff officers, front row, left to right, are Bill Brest, Missoula, retiring captain, and John Lahr, Missoula, former executive.

New Police Chief Rice Give's the Law's View

BY MURIEL GRIFFIN

During the last three years, university students have proved more cooperative with the Missoula city police force, Dan L. Rice, new Missoula police chief, said in a Kaimin interview.

All seasons considered, spring brings about more misdemeanors in the college age group. Before any student is sent to court, however, he is referred to Dean H. J. Wunderlich, who assists greatly in law enforcement, Chief Rice said.

"For the past few years we have been rather lenient toward students and the traffic problem. This year, however, we cracked down on them by sending warnings to the various living groups and enforcing the laws. Now there are no parking hazards nor running of stop signs," Rice said.

Traffic Light
To help the traffic problem on University and Maurice avenues, the overhead light at the intersection of Harris and Broadway will be transferred to the oval intersection as soon as a modern, four-way signal can be installed at the Harris-Broadway crossing.

In answer to a question regarding city police attitude toward minors being served in bars, Chief Rice replied that his department would maintain strict enforcement and that any bar found serving a minor will have its license suspended or lose it entirely. The minor in question is liable for prosecution, although this rarely takes place.

Penalty for Adult
"Any adult who takes a minor into a bar can be prosecuted for contributing to the delinquency of

a minor," Chief Rice stated. "This is a very serious charge, and usually results in a stiff penalty for the defendant."

The liquor board has been very cooperative, according to Rice, in sending out notices to the living groups and placing no-minor signs in the bars.

Unchangeable Card
He added, "The police force has never had much trouble with university students and drinking, but an unchangeable student identification card would be desirable."

He said the Missoula city police force is always on hand to help out with university plans in any way they can, "even when we are asked for permission for some poor student to count the graves in the cemetery during Hell week," concluded Chief Rice.

Applications Needed for Pageant Soon

Applications for the various committee chairman, to coordinate the Miss America pageant, are now open, Eileen Polk, Williston, N. D., said yesterday.

Positions open are: business manager, publicity chairman, stage director, chairman of selection committee, student chairman of training program, chairman for selecting judges, program and hospitality.

Applications should be turned into Dr. Clow, associate dean of students, by Friday. The reason they have to be turned in so quickly, Miss Polk explained, is that the executive director of the Miss America project, Lenora Slaughter, will be on campus the 27th of this month. All committee chairmen will meet with her to discuss this year's program.

INITIATION TONIGHT

New members will be initiated into Pi Mu Epsilon, mathematics honorary, tonight at 8 p.m. in the Eloise Knowles room. Dr. Ostrom will be the speaker.

Pershing Rifles Practice Drills For 'Ball' Tonight

Arrangements will be made for the turning-in of old brass and issuing of new brass at the meeting of Pershing Rifles tonight.

Company formation drill will be executed under the command of the new staff in the Gold Room of the Student Union. The honor guard will concentrate on special drill formations for the Military Ball Feb. 29. The non-honor guard personnel will practice precision column movements.

Club Talks on Evaluation Of Teachers

"Should the teacher be paid a straight salary or should his salary be determined more upon his personal abilities?" That was one of the topics discussed by five education club members at Stevensville Monday night.

A group discussed various types of teacher evaluation in a panel discussion before the Stevensville Parent-Teacher association, according to John Moody, education club advisor.

The discussion concerned the various groups who would decide if the teachers capabilities merited a pay raise or decrease. Four main groups are involved in such a decision, Moody said.

These groups are: the parents, the school board, the principal or superintendent, and the students themselves. The panel presented the various advantages and disadvantages presented by each group's personal judgments concerning the teacher.

After the panel presentation the audience discussed the proposed problems and concluded that a general combination of all four group opinions would probably contribute the most balanced judgment.


The students composing the panel were: Wendell Brooks, Missoula; Gloria Bugli, Missoula; Floyd MacDowell, Great Falls; Bob Nogler, Missoula; Henry Pahl, Missoula.

This group will conduct another discussion March 5 at the district MEA convention at Stevensville.

TRI DELTS DUMP DG's; SHREEVE HITS 19 POINTS

Delta Delta Delta trounced Delta Gamma, 50 to 17, in the women's basketball tournament last night. Synadelphic forfeited the game to New Hall.

Jeanne Shreeve, Milltown, scored 19 points for Tri Delta, and Gwen Flightner, Darby, made 12 points for Delta Gamma.



THE MONTANA

KAIMIN

Montana State University, Missoula, Montana

Volume LIII Z400 Wednesday, Feb. 20, 1952 No. 66

Election Returns, Political Poll, Rescue Make News

A candidate hand-picked by Governor Earl Long of Louisiana is trailing his anti-machine candidate in indecisive returns in a gubernatorial run-off election. Returns from about one-fourth of the state's precincts give Court of Appeals Judge

Robert Kennon almost a 2-to-1 lead over Carlos Spaht. However, a definite trend in the voting isn't expected until later.

A poll of young men and women who will vote for the first time this November indicates that General Eisenhower is their first choice for the presidency. The McCall magazine poll shows that President Truman ran second and Senator Robert Taft third.

Thirteen crewmen have decided to stick it out aboard the stern half of the tanker "Fort Mercer," one of the two tankers broken in half by the storm off the coast of Massachusetts. Two tugs are enroute to the scene to make an attempt to tow the Mercer's stern into port.

The usually Democratic Fifth Congressional district in Queens, New York, has elected a Republican who had campaigned on a platform attacking the Truman administration.

Patrol Lists Rule For Out-of-State Student Drivers

Out-of-state students do not need Montana license plates or drivers licenses on their cars provided they are in the state for the sole purpose of attending school and are not residents of the state, according to Capt. Joe Young, chief of the Missoula highway patrol district.

But, Young emphasized, these students must have their cars currently licensed in their own states and possess current drivers licenses from their home states.

The deadline for purchase of new plates and drivers licenses was last Friday, Feb. 15. Patrolmen began issuing summons last Saturday to persons who failed to comply with the Feb. 15 deadline, Young stated.

Students are required to register their new licenses with the registrar's office.

Another MSU Queen . . .



Doris Mudd, Missoula, was crowned "Sweetheart of Sigma Chi" at the Sig's Sweetheart ball last Saturday night. Miss Mudd, the Delta Gamma candidate, is a freshman majoring in education.

Dance Meeting for Group Chairmen Grants Will Aid In Analysis

Chairmen of the living group concessions for Mardi Gras will meet in the Bitterroot room today at 12:30 p.m., according to Margaret O'Leary, Butte, Mardi Gras chairman.

A traveling trophy will be awarded to the best concession, Miss O'Leary said, so concession chairmen are entitled to know how the concessions will be judged. A floor plan of the arrangement of concessions will be made out for the chairman.

About two-thirds of the \$16,000 research grants Dr. Muriel R. Loran recently received will be used for the purchase of a Klett Electrophoresis, an apparatus used for analysis of complex mixtures containing proteins or other high molecular weight compounds.

Dr. Loran, assistant professor of pharmacy, said the apparatus should arrive in about two months and that it will be installed in the basement of the Chemistry-Pharmacy building.

Military Ball February 29

February 29 has been set as the date for the thirteenth annual Military Ball. This year the dance will be in the Governor's and Mayfair room of the Florence hotel.

During intermission a special floor show will feature a silent drill team performing the silent manual of arms. The team is composed of members of Pershing Rifles.

The ball is sponsored by Scabbard and Blade, and is assisted by the Cadet Sponsor Corps. Although the dance is in honor of all ROTC cadets, civilian personnel are cordially invited. Dress will be customarily formal with cadets expected to wear their uniforms.

Dancing will begin at 9 p.m. with music furnished by the Moon Moods. Tickets are now on sale in the AFOTC orderly room at \$2 per couple. Cadets are asked to contact Staff Sgt. Anderson for tickets.

The Montana KAIMIN

Established 1898

The name Kaimin (pronounced Ki-meen) is derived from the original Selah Indian word and means "something written" or a "message."

Published every Tuesday, Wednesday, Thursday, and Friday of the college year by the Associated Students of Montana State University. Represented for national advertising by National Advertising Service, New York, Chicago, Boston, Los Angeles, San Francisco. Entered as second-class matter at Missoula, Montana, under Act of Congress, March 3, 1879. Subscription rate \$3.00 per year.

Member,
Montana State Press Association
Member, Rocky Mountain
Intercollegiate Press Association

Editor, Dick Wohlgenant; Business Manager, Pat Graham; Associate Editors, Tom Ambrose, Jewel Beck, Bill Jones, Lewis Keim, and Dick Smith; Circulation, Scott Cunningham.

Printed by the University Press

EDITORIAL—

What We Think About the Letters

The letters continue to come to the Kaimin, which is fine, for good letters make excellent reading and serve to provoke thought.

But, and I cautiously voice this reservation for fear the letter-writing flurry will stop as suddenly as it started, many of the letters are becoming personal attacks or arguments on points that would seem to be taken "out of context."

For instance, whether or not McCarthy was a coward in the Pacific is not of primary relevance to what was being discussed. And yet, some of the letters have concerned themselves with such a side-road in the McCarthy issue.

Other letter writers have climbed on the wagon only to try their hand at personal antagonism and have added little of value to a healthy discussion.

We have had too many letters to run them all. We have tried to be fair and impartial in our selection of those that we do run. We have leaned over backward to get into print all those opinions with which we do not agree.

Editorially, we have not answered or commented on many of the points brought up, but we have held silence, even though we strongly disagree, for a definite reason. Excellent letters from other members of the student body have been forthcoming to round out the controversy.

One of the greatest by-products of the McCarthy letter controversy has been to stimulate writing on other issues. To mention but one, we cite the quality letters received on the Iranian problems.

All in all, we are pleased with the response. But again we ask a favor—we ask that letter writers keep their letters short, under 300 words at most. Letters over that number of words will probably be cut or not used at all.—D.W.

PAT TO MEET TONIGHT

Phi Alpha Theta, national history honorary, will meet tonight at 8 in the Eloise Knowles room of the Student Union. Dr. Melvin C. Wren will talk on Will Cuppy's book, "The Decline and Fall of Practically Everybody." Refreshments will be served following the meeting.

Letters: McCarthy, Iran, MSU

SENSATIONAL JOURNALISM BUT NOT GOOD TASTE?

Dear Editor:

I should like neither to try to defend nor to defame Senator McCarthy. I should, however, like to protest the tone of some of the letters recently printed in the Kaimin concerning this issue. Wouldn't it be more constructive to look at this issue as objectively as possible, rather than to rant in the manner of Mr. Noe and Mr. Stevens? I wonder if Mr. Stevens has proof regarding his statement that McCarthy is guilty of running from battle while in the Marines—or whether Mr. Noe, accusing Miss Doherty of subjectivity, would care to defend his own statements as being objective? Could these gentlemen be guilty of projection? It may be sensational journalism, but I can't believe that it shows good taste (even if it were backed by the missing proof).

Sincerely,
Neal D. Clement

SAYS ABHARY LETTER HAS SIGNIFICANCE

Dear Editor:

The Iranian attitude toward the United States as commented on by Mr. Hossein Abhary is perhaps more significant and revealing than the American people realize.

Mr. Abhary states "the people of this part of the world had an amazingly high regard for the United States of America—" I might add that this was true of the entire Far East.

As an American who has spent most of his life in the East, and particularly the Far East, it has been my opportunity to see this evolution of Eastern opinion, a change from one of admiration to distrust.

Our foreign policy as advocated by the present administration and as carried out by the State Department has betrayed the confidence of these people for twenty pieces of silver. I have the highest regard for the rank and file of the State Department officials, and as Americans we can truly be proud of them, but they have not escaped the blunderous decisions of top officials.

Walter Gerald Luedtke

COLLEGE STUDENTS ABLE TO MAKE UP OWN MINDS

Dear Editor:

Thursday's letter by Miss Doherty has prompted me to say a few words in behalf of the "supposedly intelligent college students" that she speaks of so scathingly.

In the first place, any college student should be able to form opinions of his own about Senator McCarthy or anything else. Any one following the bare facts of the Senator's career can plainly see what a rabble-rouser he has been from the first.

Another thing, Miss Doherty claims that "the senate, with a few exceptions, is convinced McCarthy is right." I, for one, should like to know the source of her information. To my knowledge it has never been authoritatively stated that any such Senatorial agreement exists.

It is fully possible that some of the people the Senator has attacked are communists but the method of his attack is that of a shotgun going off in a crowd—you may hit

the guilty party but you do more damage than if he had gone free. In this case it contributes to national disunity at a time when the opposite situation is so badly needed.

Miss Doherty asks if we are men or cowards; to that let us say that the cowardly, underhanded, behind-the-back attacks of McCarthy are a perfect illustration of her words. As we denounced the Japanese attack on Pearl Harbor so should we decry the lack of principle of Senator Joseph McCarthy.

Yours sincerely,
Frank Boedecker.

MRS. CLAPP GIVES UNIVERSITY DATA

Dear Editor:

In connection with Thursday's Kaimin article on Charter convo, may I present some data concerning the University, gathered from official records? A university for Montana was established by legislative act in 1891. It was chartered and located at Missoula by another legislative act in 1893, and the charter was signed Feb. 17, 1893, by Governor Rickards. (The gold pen he signed it with is in the University museum in the Journalism building).

The University was not opened until Sept. 11, 1895. By November, the registration of fifty mentioned in the Kaimin had risen to one hundred eighteen. Only five of these registrants were of college rank. The rest were preparatory. No student under fourteen years of age was admitted.

The "old" Willard school was a new building. President Craig described it in his advertisements as "elegant and commodious." Citizens of Missoula had been very generous, voting bonds of \$3,000 to finish the building that summer of '95, and raising an additional \$800 to supply desks, tables, and chairs, most of them made by the

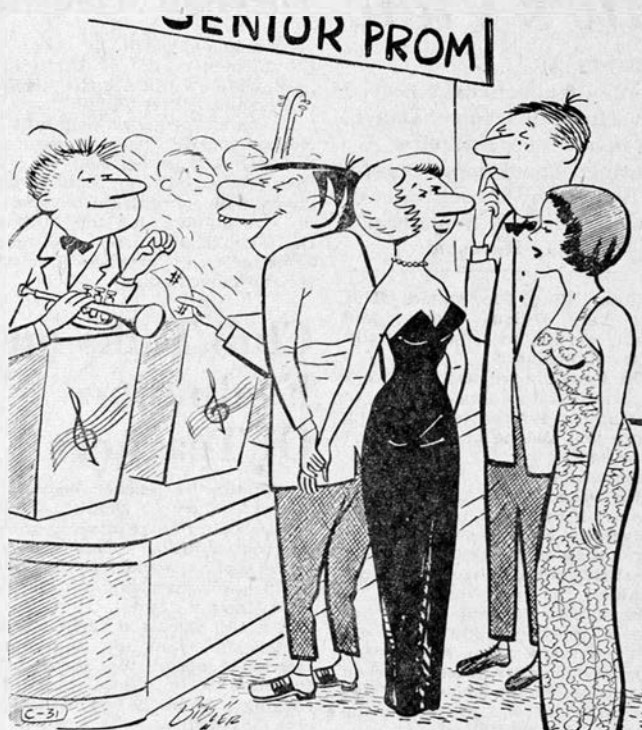
Forestry School To Sponsor Film

The forestry school will sponsor a movie this evening at 7:30 in the Student Union auditorium. The film will be in color and will explain the manufacturing processes of Wild surveying instruments.

It shows in detail the manufacturing plant in Switzerland and the use of the instruments in the Swiss Alps. No admission will be charged and all organizations both on or off the campus are cordially invited.

Little Man on Campus

by Bibler



"How's about playin' a hot, fast, jump tune?"

Phaedrus philosophized:

You will soon break the bow
if you keep it always stretched

Fables



Recipe for relaxation—take the contents of one frosty bottle of Coca-Cola. Delicious, too.



BOTTLED UNDER AUTHORITY OF THE COCA-COLA COMPANY BY
COCA-COLA BOTTLING COMPANY OF MISSOULA

"Coke" is a registered trade-mark.

© 1952, THE COCA-COLA COMPANY

DAIRY
FOODS
ARE . . .

DELICIOUS
FOODS

Perfect for Breakfast — Lunch — Evening Snacks

COMMUNITY CREAMERY

Big Blackfoot Milling company at Bonner.

Among courses offered was work in piano by Miss Mary Gray, a graduate of Boston Conservatory of Music. College credit was not granted for this work, and Miss Gray was not paid a regular salary, but the offering attracted many students and gave the University from the first a nucleus for musical activity.

Respectfully yours,
Mary B. Clapp

APO MEETS TONIGHT

Alpha Phi Omega, service honorary, will meet tonight at 7 p.m. in the Eloise Knowles room.

OLEO

25¢

Pound

Montana law prohibiting the use of oleo in any educational, charitable, hospital, medical, reformatory, or penal institution receiving any money or appropriations, or financial assistance what-so-ever.

(Ref.: Sec. 3-2437—1951 Montana Law Code.)

\$25.00
Reward

For Best Written Article
On the Subject—

(Not Over 250 Words)

"Legal Pancakes" . . . is it or is it not legal to make or serve pancakes with oleo at any educational, charitable, hospital, medical, reformatory, or penal institution in Montana?

Articles must be accompanied with a branded section of an E E M paper milk carton.

Contest ends—Saturday—Feb. 23.

Decision of the judges will be final. MSU students will act as judges.

All articles will become the property of the Bitterroot Market and are not returnable.

BITTERROOT
MARKET

SOUTH HIGGINS AVE.
Phone 5040

o to It, Girls . . .



It's anyone's ball during one of the women's basketball games. From left to right is New hall's Willa Rosean, Columbus, and North hall's Joan Brooks, St. Ignatius; and Nan Barney, Helena.

Basketball Notables

MSU Basketball Hall of Fame Lists 18 Outstanding Stars

BY JIM PURCELL

As the 1951-52 Grizzly basketball season draws to a close the names of four Grizzlies will be added to the list of eligible persons for the Montana State University basketball Hall of Fame.

Bob Sparks, Hal Sherbeck, Bob Byrne, and Dick Anderson wind up their collegiate careers when the Grizzlies end the current season against the Utah State Aggies here March 8.

If any of the four are picked for the Hall of Fame, their names will be added to the 18 who have been picked. The roll call of all-time Grizzly greats dates from 1905 to 1950. No names were added after the 1951 season because there were no graduating seniors.

Men elected to the basketball Hall of Fame and the years they played are:

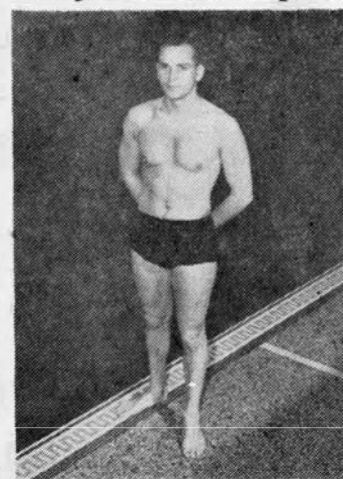
Roy McPhail	1905-1906-1907-1908
Arthur Bishop	1907-1908-1909
Ray Hamilton	1907-1908-1909
Edward Cummins	1913-1914-1915-1916
Ernest Prescott	1914-1916-1917
William Larkin	1917-1918-1920-1921
George Dahlberg	1923-1924-1925
Edward Illman	1924-1925-1926
Sam Kain	1926-1927-1928
Edward Chinske	1928-1929-1930
Billy LeRoy Rohlf	1929-1930-1931
William Lazetich	1937-1938-1939
Bernard Ryan	1938-1939-1940
A. William DeGroot	1940-1941-1942
William Jones	1940-1941-1942
Louis Rocheleau	1946-1947-1948-1949
Richard Carstensen	1947-1948-1949-1950
Robert Cope	1947-1948-1949-1950

The idea of a basketball Hall of Fame began in the athletic department in the spring of 1950. Three nominating committees were selected from alumni, townsmen, and faculty who had followed the Grizzly hoop clubs and were qualified to nominate former players.

One committee of 20 dug back into the early days of MSU basketball and nominated candidates from men who had played from 1904 to 1915. Another group of 30 judges picked players from the "middle period," 1916 to 1930. A third committee of 30 covered the last 20 years.

Each member of each committee nominated the players he thought should be recognized. Each committee then voted on the nominees

440-yard Champ...



George Harpole is the defending Skyline 440-yard free style swimming champ and this year he is out to defend his crown. He has served notice to Skyline aquatic foes by posting the fastest 440-yard time so far in the Skyline, 5:38.7.

Kegler Standings

Standings:	W	L
Alpha Tau Omega	24	3
Phi Delta Theta	22	5
Law school	22	5
Sigma Nu	19	11
Sigma Alpha Epsilon	15	15
Phi Sigma Kappa	14	16
Corbin hall	11	16
Sigma Chi	12	18
Independents	10	17
Sigma Phi Epsilon	9	21
Theta Chi	6	21
Bear Paw	4	20

"LEFTY" BYRNE

— for —
MARDI GRAS KING

TODAY'S I-M SCHEDULE

Jumbo hall vs. Sigma Chi, 7:00; Phi Delta Theta vs. Rodeo club, 8:15; and Theta Chi vs. Ski club, 9:30.



Now . . .

RATES: 20c a line for first insertion; 10c line each consecutive insertion thereafter. Five words to a line. Phone your class ad in today—Kaimin Business Office, J-School.

FOR SALE: '37 Chev. Sedan. \$100. 340 Dally. 68c

FOR SALE: '48 Buick Roadmaster estate wagon. Radio, air-conditioning, white-wall tires. Body just refinished. 1952 license. Sacrifice for only \$1385! Phone 9-1183. 67c

FOR SALE: Royal Standard No. 10 typewriter. \$30. Rev. M. J. Wilcox, 316 E. Main, phone 4092. 68c

WANTED: Riders to Great Falls. Leaving Friday noon. Call 7024 after 6 p.m. 67c

Tri Delts Expected to Win Girls' Elimination Basketball Tournament

BY HELEN LENHART

Delta Delta Delta should come it on top of the women's elimination basketball tournament, considering their performance in the recent round robin tournament.

Tri Delta won all of their games in the practice tournament, although the teams they played, except for Kappa Kappa Gamma and Alpha Phi, were of little consequence. The teamwork of their forwards is strong and coupled with the shooting ability of Dona Sherbeck and Jean'ne Shreeve, they present a potent scoring attack. Although their guards are spectacular, they are always astling.

Kappa Kappa Gamma will give the Tri Delts plenty to worry about, but the Kappas' teamwork is erratic. Either as a guard or a forward, tall Sis Carstensen is a definite advantage on the backboards for the Kappas. They will rely on the hoop accuracy of Willie Williams in the coming tourney.

In the practice tournament the Kappas won four games and lost one to the Tri Delts. Consolation winner will probably be the Alpha Phis, who have improved steadily in their playing. Although their practice tournament record, three wins and two losses, isn't as good as New Hall

No. 1, the Phis have played a tougher schedule of teams.

New Hall tallied four wins and a tie, and will probably compete with Alpha Chi Omega for second place on the consolation side. Alpha Chi Omega won three, lost one, and tied one in the practice tourney.

Alpha Phi's deadeye hoopster, Maxine Hightower, the highest average scorer in the practice tourney, averaged 16 points per game. She also made 26 points when Alpha Phi played North hall No. 2, the record this season.

Tri Delts Jean'ne Shreeve and Dona Sherbeck averaged 15 points and 14 points per game respectively. Camille Johnson averaged 13 points per game for New hall No. 2, and Willie Williams averaged 11 points for the Kappas.

APO, Wesley, ATO Monday Winners

Norman Johnson tossed 34 points through the hoop for Alpha Phi Omega Monday night and led his team to a 57-44 win over Mel's Rejects. Johnson's 34 points is the best individual effort in intramural play this season but far behind the individual record of 54 set by Bob Alkire in 1950 while he was playing with the Phi Delts.

Wesley picked up their first win of the season by dumping Corbin 35-27, with Fowler leading the way with 16 counters. Jim Loebach paced the ATO's to their 44-36 win over the Rodeo club with 12 points. John Swanson pitched in 15 for the losers and game honors.

Tops for Radio and Electrical Repairs
Walford Electric
513 S. Higgins—Ph. 3566

SMORGASBORD

6:30 P.M.

EVERY THURSDAY

\$1.75

MONTMARTRE

In the Missoula Hotel

Planning a Week End of Skiing?

Special Student Rates at the

Dee Bar Two Lodge

Make reservations for week-end skiing parties at the Dee Bar Two Lodge, 14 miles from Darby on Highway No. 93.

Good accommodations for dining and lodging. Special rates offered to MSU students. Listen to Don Weston tomorrow night at 9:15 over KGVO for ski and road conditions.

Lodge Located Just 15 Miles from Lost Pass Ski Run On Gibbons Pass

WRITE TO

DEE BAR TWO LODGE, Conner

Home of

VAN HEUSEN

Shirts - PJ's - Ties - Sports Shirts

DRAGSTEDT'S

On Circle Square

no wrinkles

in the wearing, packing or laundering

It's the Van Heusen **CENTURY** shirt with the soft collar that

won't wrinkle...ever!



You can't wrinkle the collar...your suitcase can't wrinkle the collar... your laundry can't wrinkle the collar... ever! And that soft collar stays crease-free without starch or stays. White broadcloth in regular or widespread collar. You get a new Van Heusen free if yours ever shrinks out of size! \$3.95 and \$4.95

Van Heusen

PHILLIPS-JONES CORP., NEW YORK 1, N. Y.

Shop for:

Van Heusen SHIRTS

In Our MEN'S WEAR... Street Floor

The Mercantile

Thetas Promised Reimbursement For Nocturnal Visitor's Damage

"Jeff Dogget, Sigma Nu president, assured me that the Thetas would receive payment for the damage done to the Theta dining room," Herbert J. Wunderlich, dean of students, said yesterday.

This announcement was the result of a meeting last Friday at which representatives of Sigma Chi, Sigma Nu, and Kappa Alpha Theta, together with Dean Wunderlich, determined how reparations were to be made for damage caused when a horse was placed in the dining room of the Theta house and the front hall of the Sigma Chi house.

"We also discussed how incidents of this type could be prevented from happening again," Wunderlich said. "We all realize that we, both students and faculty, are all members of a community (the University) and as such we are responsible for the happenings in our community. It is up to us as members of this community to legislate so as to deter the recurrence of such incidents."

"How we are to prevent the

recurrence of similar happenings is a matter that will be discussed more fully. I can't say now whether it will be handled through Interfraternity and Panhellenic, or if the University administration will handle the matter. I do know, that such incidents must be prevented from recurring," Wunderlich emphasized.

How damage to the Sigma Chi front hall will be paid for has not been determined yet, Dean Wunderlich said.



Zip Beverage Co.

Missoula, Montana

Summer Camp Plans Announced

According to word received from Fourth Air Force Headquarters, seniors will not be required to attend summer camps this year. Instead, they will be assigned to regular active duty shortly after graduation. Juniors, however, will be required to attend summer encampments. The order also stated that all individual postponements for Air Force ROTC summer camps are rescinded as of this date.

Student Union Schedule

Bitterroot room, 7 to 8, Student Christian association; 8 to 10, Phi Mu Epsilon.

Eloise Knowles room, 3 to 5, Central board; 7 to 8, Alpha Phi Omega; 8 to 10, Phi Alpha Theta. Central Board room, 4:30 to 6, Associated Women students.

Auditorium, 4 p.m., Band rehearsal; 7:30 p.m., Forester's movie.

Gold room, 5 to 6, Sponsor corps; 7:30 to 8:30, Pershing Rifles.

Lack of Funds Cancels Nevada Ski Meet at Reno

After having high hopes that Montana's skiing Grizzlies would be entrants in Nevada university's 13th annual winter carnival this week end, ski coach Jim Faurot today announced that his club will

not be a participant at the winter meet.

He explained that lack of money was the principal reason for the change. Montana, as originally invited, was to pay only for expenses to and from the winter meet. Accommodations were to be provided by the University of Nevada.

However, Montana officials were later informed by Nevada that accommodations would not be avail-

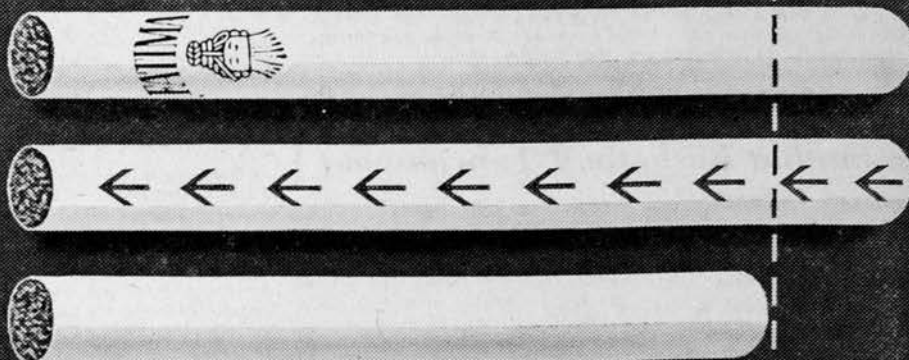
able this year for Montana skiers. Since no funds are forthcoming from the athletic department, the trip will not be possible.

SIX CENT BET NETS HOUSEWIFE \$210,000

Birmingham, Eng., Feb. 20. (AP)—A dark-haired secretary and a young mother each have won \$210,000 on their six-cent bets separate British football pools.

COMPARE FATIMA*

with any other
KING-SIZE cigarette



- 1 FATIMA filters the smoke 85 millimeters for your protection.
- 2 FATIMA'S length cools the smoke for your protection.
- 3 FATIMA'S length gives you those extra puffs—21% longer.



AND you get
an extra-mild
and soothing
smoke—plus the
protection of
FATIMA
QUALITY

* Compare Fatima with any other King-Size cigarette. If you're not convinced Fatima is better, return pack and unsmoked Fatimas by Aug. 1, '52 for money back plus postage. Fatima, Box 37, New York 1, N.Y.

Best of All KING-SIZE Cigarettes

Copyright 1952, LIGGETT & MYERS TOBACCO CO.

HECK--I DON'T NEED TO GO TO THE HOSPITAL! LOOK AT THIS SUIT! TAKE ME TO CITY CLEANERS



610 S. Higgins

CITY CLEANERS

Phone 6614

JOHN F. PATTERSON

NOW!... All Western Montana can enjoy our Fine Cleaning through Mail Order... We'll pay return postage on all orders.

CITY CLEANERS SOCIAL CALENDAR 11 A.M. MONDAY THROUGH FRIDAY—List Your Social Events
Phone 4114—or Write KXLL, Box 1503