

University of Montana

ScholarWorks at University of Montana

Montana Kaimin, 1898-present

Associated Students of the University of
Montana (ASUM)

11-21-1952

The Montana Kaimin, November 21, 1952

Associated Students of Montana State University

Follow this and additional works at: <https://scholarworks.umt.edu/studentnewspaper>

Let us know how access to this document benefits you.

Recommended Citation

Associated Students of Montana State University, "The Montana Kaimin, November 21, 1952" (1952).
Montana Kaimin, 1898-present. 2859.

<https://scholarworks.umt.edu/studentnewspaper/2859>

This Newspaper is brought to you for free and open access by the Associated Students of the University of Montana (ASUM) at ScholarWorks at University of Montana. It has been accepted for inclusion in Montana Kaimin, 1898-present by an authorized administrator of ScholarWorks at University of Montana. For more information, please contact scholarworks@mso.umt.edu.

THE MONTANA KAIMIN

Montana State University, Missoula, Montana
Volume LIV Z400 Thursday, Nov. 20, 1952 No. 30

C-Board Sanctions Increased Roster for I-M Sports Board

BY BILL JONES
Central board recognized a need, and adjusted ASMSU regulations to meet that need at their meeting Thursday afternoon. The Intramural Sports board, now composed of three members, was adjusted to include five members. Board members emphasized that one or more members should be Independents.

Don Erickson, Havre, Sports board chairman, requested Central Board delegate Dave Leuthold, Billings, to negotiate the increase because of the need for greater

Brown Band Features Own Songs

Performance and arrangement will share an equal spotlight in Tuesday night's "Band of Renown" music in the Student Union. Les Brown and his band will play for students at a concert and dance. When he wrote and chose as his theme song the tune "Sentimental Journey," Brown had no idea that he would later cover over 500,000 miles playing the same song to millions of service men and women all over the globe. He and the band have played in Guam, Saipan, Seoul, Taegu, Pyongyang, Tokyo, Paris, Berlin, Wiesbaden, and Frankfurt.

Geoff Clarkson, the composer for the band, wrote the song, "Home." Of the four trombone players, Ray Sims does most of the solo work. Bass trombone is played by Les's younger brother, Stumpy, who does the rhythm vocals and shares comedy songs with baritone saxophone player Butch Stone. Dick Noel, another member of the trombone section, is married to vocalist Lucy Ann Polk.

Tickets are now on sale in the Student Union cove store and at Hefte's Music shop. Tickets for the concert and dance are \$1.50 per person and \$1 per person for the concert.

SQUARE DANCE CLASS WILL NOT MEET TUESDAY

The intermediate square dance class will not meet this Tuesday in the Gold room as originally scheduled.



Only 86 juniors and five seniors have had their pictures taken for the Sentinel, according to Editor Helen Lenhart, Havre. Five days remain for students to pose: today, Saturday afternoon, and Monday, Tuesday, and Wednesday of next week. Pictures are taken from 9 a.m. until noon in the Make-up room, and 1 p.m. to 5:30 p.m. in the Eloise Knowles room. Kamelia Dregmont, assisted by Norm Anderson, Chinook, and Doug Anderson, Conrad, waits for Photographer Win Hunt while she poses for the Sentinel feature section.

representation on intramural sports disputes.

ASMSU president Dan Lam-bros announced that "Gripe" board, under the direction of Tom Sherlock, senior class president, will coordinate all campus efforts to establish an Activity Guidance committee. This committee would help promote more student participation in extra-curricular activities. The board also plans to change the name of "Gripe" board to a more becoming title. The legal name is Student Ideas for University Betterment committee.

Bev Henne, Traditions board chairman, announced that 75 freshmen met Wednesday night to form a rally committee. Officers elected were president, Armand Pepe, Missoula; vice-president, Bobbie Atkinson, Missoula; secretary, Nancy Schilling, Missoula; and treasurer, Denny Huggins, Kalispell.

A request by the Student Christian association to sell Christmas cards on campus was granted.

Organist's Recital Scheduled Sunday

Mrs. Florence Smith will give an organ recital at the Church of the Holy Spirit Sunday at 4 p.m. Mrs. Smith, a member of the School of Music faculty, teaches organ at the University.

Her program will include "Pavane" by Byrd; "Gagliarda" by Schmid; a group of Bach numbers, "Fantasia," "Now Let Us Sing with Joy," and "Prelude and Fugue, F Minor," and "Organ Concerto—B flat Major" by Handel. The featured number will be a musical story of the church year—advent, "Ava Maria" by Yon; Christmas, "Liebster Jesus," by Ahle-Bach; Good Friday, music from "Parsifal," by Wagner; and Easter, "Today God's Only-Gotten Son" by Bach, and "On the Evening of the Ascension" by Benoit.

One of These to Join MSU Royalty . . .



Sigma Phi Epsilon will crown one of these coeds as their "Queen of Hearts" at a ball Saturday night. Candidates, from left to right, back row, are Marie Richardson, Delta Delta Delta; Kay Wohlgemant, North; Ramona Marquardt, New; Sharon Dalling, Sigma Kappa. Front row: Joan Rowley, Synadelphic; Arlene Hoiland, Kappa Alpha Theta; Jean Bachman, Delta Gamma; Barbara Berg, Kappa Kappa Gamma; Sally Smith, Alpha Phi.

TB Drive Starts Today On Campus

The campus tuberculosis drive will be on a serve-yourself basis, according to Dr. M. P. Wright of the Health service. Dr. Wright is working with Mrs. Ella M. Stucky, chairman of the Missoula county drive, in conducting the campus drive.

The drive begins today and will continue until Christmas. Displays consisting of a box for funds, a poster, seals, and literature will be placed at the Health service, the Coke store, Main hall, and the Library.

Students are to put in some money and take some seals. Dr. Wright stressed the fact that any amount of money may be deposited. Last year \$10 was collected for the fund, and Dr. Wright said that this isn't enough for a campus this size.

The funds collected help to bring the mobile X-ray unit to the campus. Last fall 1,834 TB X-rays were taken on campus. Four probable tuberculosis cases were discovered but no active tuberculosis was found. Two possible cases of heart disease, one possible chest tumor, and one other chest abnormality were discovered from the X-rays.

"It is very worthwhile if even one active case of tuberculosis is caught on the campus," said Dr. Wright. This will protect everyone else. The films are compared from year to year, and several of last year's possible cases were found to be all right during this fall's X-ray campaign.

Phi Chi Theta Gives Rush Party

Phi Chi Theta held a rush party Thursday from 4 to 5 at the Delta Gamma house. Purpose of the party was to outline the purposes of the club to prospective members. Phi Chi Theta is the professional sorority for business administration majors with an average of at least 1.5 in business administration subjects and an over-all average of 1.

Members discussed plans for their rush party at their meeting Wednesday.

Dinner Committee Selected by Spurs

Pat O'Hare, Stevensville, appointed committees to begin work on the banquet honoring Spurs of last year which will be Dec. 3.

Spurs were urged to turn in all bills, money, and unsold tickets pertaining to Sadie Hawkins to Mary Calvert, Great Falls, as soon as possible.

The next regular meeting will be a social hour at the Delta Gamma house.

Seventy-Three Registered For Farmer-Labor Meeting

Seventy-three persons have registered for the Montana Farmer-Labor institute being conducted on the campus. The institute, which is sponsored by the Montana Federation of Labor, Montana Farmers Union and International Union of Mine, Mill and Smelter Workers, with the cooperation of the University, will last through Saturday.

At 9 a.m. today Dr. Herbert K. Abrams, medical director of the health and welfare fund of the Janitors' union of Chicago, will speak on workmen's compensation, including occupational diseases. Consultants for the discussion will be Stanley Thurston, International Typographical union, Helena, and Ernest Salvias, IUMM&SW, Butte.

The 1:30 session will have Associate Justice R. V. Bottomly of the Montana Supreme Court as main speaker on natural resources. Consultants for the discussion are William Mason, IUMM&SW, Butte,

and Al Root, MFL vice president, Somers.

Public power will be the subject of the 7:30 p.m. session. Dr. Paul J. Raver, Bonneville Power administration, will be the main speaker. Leif Erickson will be discussion leader.

The institute is the only one of its kind in the nation in which workers and farmers cooperate in a mutual educational program.

Thursday afternoon's session included a discussion on parity and price control with Prof. John Swackhamer of the University, and Prof. Carl Kraenzel of Montana State college as main speakers. Dr. Arthur Elder, director of the training institute of the International Ladies' Garment Workers union of New York spoke on taxation.

Saturday's discussion will be on legislation including health, education and social security, and a summary of the institute, with Dr. Richard A. Baisden, Institute of Industrial Relations of the University of California, Los Angeles, as main speaker.

Interest in Religion Awakened Since War, Says RE Speaker

"Since the war there has been an awakened interest in theological questions," said the Rev. Glen Bragstad yesterday at a seminar to evaluate Religious Emphasis week. Students feel a need, he said, to discuss basic religious beliefs.

Between 900 and 1,000 students were contacted by the eight religious speakers during the past week, the Rev. Bruce Wood reported.

Purpose of the seminar was to evaluate the accomplishments of this Religious Emphasis week and to make suggestions for future programs. One of the basic criticisms

of the current program is that too much emphasis is placed on the secular academic world and not enough on Christianity as such.

Msgr. James J. Donovan suggested that a campus survey be taken to find out how many students practice their religions and, if not, why. He said, "If the people practice their religions better through our efforts, then we have accomplished something."

Rabbi Albert Plotkin said that there was a definite lack of religious services during the week, and Msgr. Donovan agreed that rather than "justifying the place of religion in education and life," Religious Emphasis week should develop the concrete manifestations of religion.

Student Religious council will meet Monday at 4:10 in the Eloise Knowles room to get further student reactions and suggestions.

Pledges to Romp At Stocking Stomp

Members of pledge classes of sororities and fraternities are invited to attend the "Stocking Stomp," a get-acquainted dance sponsored by Junior Panhellenic. The dance will be tomorrow afternoon from 2 to 4 in the Copper room of the Student Union.

Marilyn Gunkel, Missoula, president of Junior Panhellenic, said that prizes will be awarded the pledges wearing the most colorful stockings. Refreshments will be served.

The Montana KAIMIN

Established 1898

The name Kaimin (pronounced Ki-meen) is derived from the original Selish Indian word and means "something written" or a "message." Published every Tuesday, Wednesday, Thursday, and Friday of the college year by the Associated Students of Montana State University. Represented for national advertising by National Advertising Service, New York, Chicago, Boston, Los Angeles, San Francisco. Entered as second-class matter at Missoula, Montana, under Act of Congress, March 3, 1879. Subscription rate \$3.00 per year.

Member,
Montana State Press Association
Member, Rocky Mountain
Intercollegiate Press Association

Editor, Lew Keim; Business Manager, Joy East; Campus Editor, Allan Rose; Copy Editor, Bill Jones; Sports Editor, Frank Norberg; Feature Editor, Betty Smith; Assistant News Editor, Carla Wetzstein; and Circulation Manager, Loy Robinson.

Printed by the University Press

Dud or Detonator . . .

Eighty people tried to explode a bomb at MSU this week. Over 2,100 witnessed the detonation party at work. Some thought it exploded, some thought it fizzled, some didn't think.

Those 80 workers tried to explode a bomb they called "Religion—Dud or Detonator?" Others had tried before them. Religious Emphasis weeks have been a campus tradition since 1946. Each has been considered a success—by those that promoted it. Yet, the true worth of a RE week cannot be termed either "success or failure" by those that promote it.

The only manner in which the week may be gauged is the resulting attitudes and behaviorisms of those who participated. And that represents a polling problem far above the capabilities of the nation's best pollsters.

For that reason the week can't be labeled good, bad, or mediocre. But rather, it can be evaluated in individual areas. The prerequisites for judgment in those areas are attendance, interest, participation, and attitude.

The most outstanding phase of the week for most students was the seminar series. The topics were geared to the basic problems in students' lives. They hit "home" with an individualistic twist. Thursday afternoon, the Bitterroot room overflowed with 175 students and faculty interested in "birth control" discussed by Protestant, Catholic, and Jewish leaders. The seminar series, because of its pertinency, was most appreciated by students.

RE week leaders said they wanted to "bring religion into the picture of education." They succeeded by placing the visiting lecturers in classrooms. MSU instructors studied speakers' backgrounds, and selected lecturers who could most aptly integrate their talk with the subject being studied. Most students appreciated it.

In living groups, speakers endeavored to present "both sides of the problem." Their talks often detonated into "all-night bull sessions." Because of those instances, and others in which students were incited to think, the Kaimin congratulates the Religious Emphasis week promoters.—B.J.

MSU's basketball schedule includes the first home game on Dec. 23 with Washington State.

Tidball Perturbed, Ponders Purpose Of Kams, Dregs

Dear Editor:

This is not a complaint or a demand. I do not propose any reforms for reform schools. I submit an inquiry in an earnest pursuit of greater "light and truth."

What is the purpose of Kams and Dregs?

I would prefer a sincere and logically conceived answer, not the usual parrot reply, "To promote school spirit." These collegiate falstaffs must realize themselves that any cause-and-effect relationship between school spirit and wiener roasts on the oval is laughingly remote. Could it be that the individual members are possessed with some perverted desire for personal notoriety?

I am led to understand that the revival of that decadent tradition of "Hello Walk" was the motivation behind Thursday's pseudo-rally. Apart from an obnoxious defacing of University property, the only apparent result was the fulfillment of an adolescent psychological drive to scribble on sidewalks.

If the primary aim of this group is to attract attention, I suggest that they hang their members one by one from the oval flagpole. I will support any suggestion that ASMSU furnish financial assistance for this project.

This letter will undoubtedly be assailed by a multitude of frowning answers condemning my censorious position toward "a swell bunch of kids" who get together to do "crazy things" and "have fun." I will contemplate any logical and coherent reply.

Gene Tidball

**Fresh Cut
Roses \$3 doz.**

Bitterroot Floral
308 South Higgins

Today's Meetings

The Montana Forum committee will meet at 12 o'clock in the Eloise Knowles room.

Alpha Kappa Psi will have a banquet and initiation Sunday at 5:30 at the Steak House. All members are urged to attend.

FLATZ Indicates Busy Schedule

Montana's migrating missionaries in the mile-high town are now convening with others of like intentions in all-day sessions. The Sigma Delta Chi journalism convention in Denver is scheduled to terminate Saturday night.

These telegrams have been received from FLATZ (Frank Norberg, Lou Keim, Allen Rose, Ted Hewett, and Ziggy Zygmund) during the past two days: "We went through cowboy land. All we saw was snow and sand; Now for a convention, The rest we won't mention!"

"The convention keeps us busy, And with the rest we're dizzy; When we finish this one, Another rhyme and we'll be done."

GOLDEN PHEASANT

11:30 A.M. TO 12 P.M. WEEKDAYS
11:30 A.M. TO 3 A.M. SATURDAYS
(Closed Wednesdays)

George Friedman, J School Grad, Hired by CBS

George Friedman, 1951 graduate of the School of Journalism, was hired by the Columbia Broadcasting System for the WBBM newsroom in Chicago, Nov. 10. His job is that of newswriter-reporter.

Mr. Friedman will receive an M.A. from Northwestern university this December. Prior to his job with CBS, he worked as a part time reporter on a weekly newspaper.

For Your Convenience—

*Drop Off Laundry
and Dry Cleaning*

at

**MISSOULA LAUNDRY
and DRY CLEANERS
SOUTH SIDE SERVICE**
814 South Higgins

YELLOW CAB

Ph. 6644

No Waiting

J. M. Lucy and Sons

COMPLETE
HOME FURNISHINGS
SINCE 1889



*Dance to the
Music of the
NOTE ABLES*
At the
Jungle Club

Dancing every Friday and
Saturday from 9 p.m. to 1 a.m.
Missoula Hotel Building

Dress Up Your Sweaters

With Year-Round Favorite
TUCKER'S

Choose from the
Three Styles at

Jim and Jack's

WAFFLE PIQUE with
TATTING TRIM

WAFFLE PIQUE with
SCALLOPED EDGE

REVERSIBLE

HOMEMADE CANDY
SANDWICHES
SODA FOUNTAIN
PALLAS CANDY COMPANY
Next to the Wilma Theater

It's HANSEN'S

for Nutritious, Delicious

Creamy MILK SHAKES

Lots of Good Eating for only 20c
ICE CREAM IS GOOD ANY TIME—

Take Home a Pint or Quart of Our Bulk Ice Cream

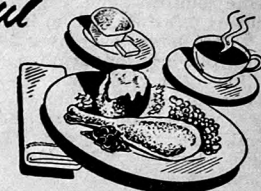
— More Than 20 Flavors to Choose From —

519 SOUTH HIGGINS

OPEN UNTIL 10 P.M.

Such Wonderful FOOD

- BREAKFAST
- LUNCH
- DINNER



- SOFT DRINKS
- COFFEE

Student Store Cafeteria

CAFETERIA HOURS—

Monday through Thursday 7:20 a.m. to 10 p.m.
Friday 7:20 a.m. to 7 p.m. Saturday 7:20 a.m. to 5 p.m.

"Discount Days"

at

Cummins
20% DISCOUNT
COATS SUITS

One group of new fall un-trimmed and fur-trimmed coats.

One group of new fall all-wool suits; also, all-season suits.

Values from 69.95 Values from 39.95

DRESSES

One group of new fall dresses in wool, rayon, crepe, taffeta, or faille.

Values from 10.95

4 SPECIAL GROUPS OF COATS

Specially Priced at

\$24⁹⁸ - \$29⁹⁸ - \$34⁹⁸ - \$39⁹⁸

Cummins
STORE FOR WOMEN

Queen of Hearts Leads Society

BY REBA TURNQUIST

The crowning of the Sigma Phi Epsilon "Queen of Hearts" Saturday night will top the social events this week end. Students, however, are looking past the week end to the concert and dance to be given by Les Brown and his "Band of Renown" Tuesday evening at the Student Union. Women have been granted one o'clock hours for the dance and concert, the second to be sponsored by ASMSU this year.

Hefte's Music shop is sponsoring Les Brown autograph party Tuesday afternoon at the store.

Tonight, Tri-Delts will entertain their dates at a fireside and roller skating party, while the Alpha Phis have their fall quarter Monte Carlo party at the chapter house.

Sigma Phi Epsilon
The Queen of Hearts candidates were serenaded at their residences Monday night. Saturday night, the candidates were honored at a fireside.

The Rev. W. J. Antisdale, Spo-

kane, spoke at the house Tuesday evening in conjunction with Religious Emphasis week.

Leighton Stubban, ex-'54, visited the chapter on his way east.

Kappa Alpha Theta
Annemarie Beatty and Joanne Angstman, both of Helena, were week-end guests. Both graduated last year and have just returned from a tour of Europe.

Joan McMahon and Ruth Finlen, Butte, visited the house on their way to Seattle university.

Phi Sigma Kappa
Annamae Kovatch, Phi Sig Moonlight girl, and her parents were guests at the house last week end.

Gene McIlroy of Hamilton is a recent pledge.

Delta Gamma
Mrs. Floyd O. Werle, Billings, was a dinner guest Friday night and a luncheon guest Saturday.

Dr. Gertrude Boyd Crane was a guest at the house during Religious Emphasis week. Dinner guests and speakers during the week were Msgr. J. Donovan, and Dr. Paul B. McCleave.

A formal reception was given for Mrs. Harold Van Bergen, house-mother, on Saturday.

Sigma Chi
Bud Bellis, Helena, and Maxine Hightower, Missoula, Alpha Phi, will be married Tuesday evening at the Methodist church.

Carl Malcolm and Gene Nooney, both of Missoula, are recent pledges. Pledge officers are: Jack Tidman, president; Dick Turbiville, vice president; George Fleming, secretary-treasurer; and Jerry Smith, social chairman.

Alpha Phi
Pat O'Hare, local Spur president, attended the Spur convention at Pullman, Wash., last week end.

New Hall
Jeanne Couture, Arlee, is wearing the Sigma Phi Epsilon pin of Matt Mattson, Missoula.

Kappa Kappa Gamma
Dorothy LaZarus, Helena, and Georgiann Strange, Stevensville, were Sunday dinner guests.

Liz Bradham, Missoula, and Gwendolyn Harper, Joyce Bippes, and Lenore Howell, Cheney, Wash., visited the house last week end. The latter three were at MSU for the Mu Phi installation.

Carol Kronmiller, Billings, received a Sigma Nu serenade Mon-

day night. She is pinned to Bob Gibson, Butte.

Donna Mithun, Missoula, had dinner at the house Monday evening.

Theta Chi
Rayner Dickey, Riverdale, N. D., is a new pledge.

The Rev. Glenn Bragstad, Bremerton, Wash., was a guest during Religious Emphasis week.

Ken Payton '51 visited the house last week end. He is employed by the Lewistown Daily News.

Synadelphic
Arden Grandy, East Helena, and Elbert Hill, Missoula, were married at the Methodist church Friday.

Sunday dinner guests were Dr. Maurine Clow, Mrs. Clow, Mrs. W. H. Thompson, Corbin hall head resident, and Harriet Miller, North hall head resident.

The quarterly get-together breakfast was Saturday morning. Two of the house members also had birthdays Saturday.

Sigma Kappa
The juniors took an unsuccessful sneak Tuesday night. Underclassmen discovered them 10 minutes before the time was up.

The Rev. Glenn Bragstad was a dinner guest and speaker at the house Wednesday.

Pledge officers are Carol Dax, president; Amy Rose Kruger, vice

president; Sharon Dalling, secretary; Adele Leonard, treasurer; Mary DeJarnette, social chairman; and Janice Burton, rush chairman.

Delta Delta Delta
Shirley Perrine, Lewistown, is wearing the Sigma Nu pin of Bill Morrison, Missoula.

The pledges pulled a successful sneak Saturday morning.

Mrs. Mildred Bowlby, district Tri-Delt president from Moscow, Ida., visited the chapter last week. The chapter honored Mrs. Bowlby at a party Tuesday night.

Mrs. Eleanor Wilson and Mrs. Adele Ratcliffe, national Mu Phi Epsilon officers from Seattle; Donna Larson, Savage; Stella Critelli, Billings; and Virginia Balkovetz, Twin Bridges, were Friday dinner guests.

Ruth Kinney, Great Falls, received a diamond from Don Talcott, Phi Delta Theta, of Great Falls.

Sigma Nu
Byron Robb, Livingston, was elected lieutenant commander at

ALASKA, HAWAII and the WEST
Exceptional Mid-year Opportunities—Western Certification Booklet with Free Life Membership. Register Now!
HUFF TEACHERS AGENCY
2120 Gerald Ave. — Phone 6653
37 Years of Service Member NATA

Consult Your College Counselor

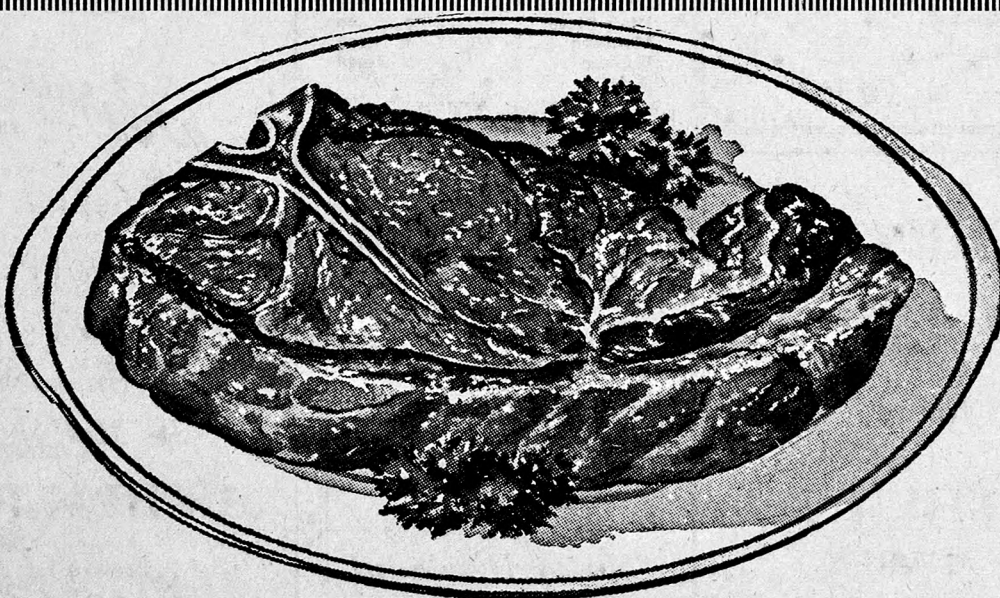
Cecil's invites you to do your gift shopping early in the holiday season. Drop in tomorrow, and let Janice help you with gift suggestions. She will show you Cecil's Christmas special on nylon nightgowns. Values up to \$16.95 are priced at \$8.95. Gowns are tailored, or lace trimmed, and come in sizes 32-40.

While at Cecil's visit the jewelry and accessory counters.

Cecil's

HAMMOND ARCADE BUILDING

Janice Ludwig, Kalispell, is this week's counselor. Janice has been active in ASMSU committee work, and was a Junior Sponsor. A Sociology major, she graduates this quarter. Janice is president of Alpha Phi.



4 B's CAFE
GUARANTEED STEAKS

the Monday active meeting, succeeding Jack Walker, Great Falls. Vince Wilson is the new faculty advisor for the chapter.

The Rev. Roger Blanchard, New York, was a guest of the fraternity this week.

Thanksgiving Living

Special Enamelled Roaster
Holds four-pound chicken...98¢
Pyrex Baster
No spattering of hot grease...59¢
• Skewers • Pie Plates
• Aluminum Foil

Barthel Hardware

Ends Saturday!

REVENGE
Aboard a Lawless Pirate Ship!
CARIBBEAN
Color by TECHNICOLOR
A PARAMOUNT RELEASE
starring, John Payne, Arlene Dahl
PAYNE • DAHL
And
YOUTH IN WAR!
FAITHFUL CITY
JAMIE SMITH, DIDI RAMATI, DINA PESKIN
A JAN BRU RADIO RELEASE

SUNDAY!
SOMETHING FOR FUN!!
Most Lovable Rascal in Washington!
Victor Mature, Patricia Neal, Edmund Gwenn
MATURE • NEAL
Edmund GWENN
SOMETHING FOR THE BIRDS
FOX

Campus
SUNDAY - WEDNESDAY
BETTY GRABLE
MACDONALD CAREY
— In —
Meet Me After the Show
TECHNICOLOR
Plus
CLIFTON WEBB
in
Mr. Belvedere Rings the Bell

Colorful cards... that vital link in each of your friendships.
Christmas Cards
Beautiful, varied display of cards... sparkling with spirited originality and traditional warmth. Personalized cards. Art work representing over 30 leading studios.
Priced from 125 (50 cards)
CHINA AND GIFT SHOP
... Street Floor
The Mercantile

Grizzlies, Lobos Battle Saturday as Twelve Seniors Play Final Game

The Montana Grizzlies left by airplane for Denver Thursday morning on the first leg of their trip to Albuquerque where they play the New Mexico Lobos Saturday afternoon. Coach Ed Chinske planned to send his men through a workout at Denver before proceeding on to the New Mexico capital city this morning.

Twelve Grizzly seniors are making their last trip under the Silvertip banner. They are Jim Murray, Mel Ingram, Gordon Jones, Bob Antonick, Bob Lamley, Bo Laird, captain Hal Maus, Don Gerlinger, Fred Mirchoff, Don Orlich, Dick Pinoneault, and Dick Shadoan. Gene Carlson, another senior, was sidelined last week when he suffered an abdominal injury in the San Jose State game.

Montana has everything to gain and nothing to lose in their last game, while New Mexico must win

in order to keep their Skyline conference championship hopes alive. The Grizzlies once again will put a revised defensive squad on the field. Don Little and Jim Burke have both been on the injury list the past week.

New Mexico's rock-ribbed defensive squad will undoubtedly slow down the Grizzly running game. If Dick Heath, Murdo Campbell, and Dick Shadoan can connect with passes, Montana could conceivably pull an upset.

The Silvertip passing game has improved considerably during the last two games with Idaho and San Jose. If the game settles down to a defensive battle with neither team going anywhere, New Mexico probably would hold the advantage with their star place-kicker and quarterback, Mike Prokopiak. Prokopiak has scored five field goals so far this season.

Skiers Elect Club Officers, Plan Auction

The University Ski club elected officers at their Wednesday meeting and made plans for an auction and a ski trip.

Harry Burnell, Kalispell, is the new president. Pat Wordal, Missoula, is secretary and Diane Reynolds, Hamilton, is photographer.

The club will auction used ski equipment and clothing Dec. 10 in the Copper room. Lew Penwell, Billings, who is in charge of the auction, asks students to contact him if they have equipment they would like to place on auction. The auction is with reserve, that is articles can be withdrawn if the owner thinks the price bid is too low.

A ski party Jan. 9-11 at Big Mountain near Whitefish is also planned. The week-end trip will cost \$19. The fee will pay for transportation, lodging Friday and Saturday, tow fees, three meals Saturday, and breakfast and lunch Sunday.

The trip will be made in private cars, and drivers will be paid \$3.25 for each person they transport.

Students interested in making the trip may contact Harry Burnell or Pat Wordal. A \$10 deposit will be required by Christmas vacation.

Harry Burnell is also taking subscriptions to a ski magazine.

KKG Leads in WAA Swimming Trials

Kappa Kappa Gamma led the seven teams, with five qualifiers, in the preliminary trials in the WAA swimming meet yesterday.

Qualifiers were: 20-yard crawl: Helen Ring, Independent; Dinny Reynolds, DG; Helen Aune, AP; and Phyl Kind, AP. Time, 12.7.

40-yard crawl: Rosie Laing, Ind.; Patty Burnett, KKG; Marilyn Hardenburgh; and Judy Adams, North. Time, 32.2.

20-yard breast stroke: Judy Harkin, DG; Phyl Kind, AP; and Betty Barbee, KKG. Time, 15.9.

40-yard breast stroke: Judy Harkin, DG; Rosie Laing, Mae

Behner, KAT; and Gayle MacDon-ald, KKG. Time, 37.2.

20-yard back stroke: Helen Aune, Dot LaZarus, Sue Kuehn, KKG; and Carolyn Porter, KAT. Time, 15.5.

40-yard back stroke: Dot LaZarus, Carolyn Porter, Jerry Huhn, KKG; and Sue Wiley, DG. Time, 35.

good-looking..

... describes this Dunbrook year-round overcoat. But it's as practical as it is handsome. For the detachable pure wool lining may be zippered in when it's cold — out when the weather is mild! So you get a warm overcoat and a smart topcoat, all at one moderate DUNBROOK price!

Made in colorful Shetlands and Tweeds. All 100% wool and a yard wide!



100% WOOL LINING ZIPS IN or OUT INSTANTLY!

Made with or without detachable lining.

AS ADVERTISED IN Esquire.

Yandt's
MEN'S WEAR

OLSON'S
BEER - MAGAZINES
Open Evenings and Sundays
2105 SOUTH HIGGINS

For ---
Fine Cleaning
For ---
Fast Service
Send Your
Cleaning
to

CITY
CLEANERS

610 South Higgins

Classified Ads ...

FOR SALE: 1940 Nash. Overdrive, R. and H. \$135. Inquire Chimney Corner Barber Shop, 3-5:30. 31c

FOUND: Two car keys on North Dakota license key chain. Claim at Student Union business office. 1c

JOAN SAYS—

Come to Les Brown's
AUTOGRAPH PARTY
4:30 Tuesday, Nov. 25

At

HEFTE'S
Music Shop

THE MUSIC CENTER
310 N. Higgins Phone 4110

Grizzlies vs. Lobos Will be Top Game in Skyline

Skyline conference attention will be focused upon the New Mexico-Montana grid game Saturday. Two other games are scheduled but have little bearing on the final conference standings.

New Mexico will have to come out of the Grizzly game with a win if it expects to win the Skyline title. Although Utah is undefeated and New Mexico has one defeat, an upset win by Utah State over Utah on Thanksgiving could throw the race into a tie. Since New Mexico plays one more conference game than Utahs, the Lobos could win the title with two straight wins, while Utah must only win from the Utahs to sew up the title.

Denver's winless Pioneers meet Utah State this week, and probably will still be winless after the game. Utah State is favored by three touchdowns. Brigham Young meets Colorado A and M in the other game.

Skyline Standings

	W	L	Pct.
Utah	4	0	1.000
New Mexico	3	1	.750
Colorado A and M	4	2	.667
Wyoming	3	3	.500
Brigham Young	3	3	.500
Utah State	2	2	.500
Montana	1	4	.200
Denver	0	5	.000

VB PRACTICAL TESTS SCHEDULED FOR TODAY

Eleven women passed the written volleyball officiating tests sponsored by the women's M club. Practical tests will be given today from 2 to 4, according to Willa Rosean, women's M club president. Tests will be continued Monday and Tuesday.



Motor Overhaul

ELI WOOD

Auto Repair Shop

303½ East Front Street

FOUNTAIN

FAIRWAY
DRIVE IN

BEER

On Highway 93 South

"Home of the Basketburger"
Minced Ham,
Chicken or Tuna Salad Sandwich

50¢

With Potato Salad

We also serve complete meals!

"Don't Drive By — Drive In"

ROUND UP THE GANG

This Week End

and Head for

THE NORTHERN

"LONGEST BAR IN THE NORTHWEST"

Dancing in the Rose Room
Hot Franks for a Light Snack

201 WEST RAILROAD

MISSOULA

MURRILL'S

Famous
Cocktail Lounge

Call 6664

DE LUXE CABS

24-HOUR SERVICE

Always Ask
for

Highlander
PREMIUM BEER

The Beer With
TASTE APPEAL

★ Rich
★ Smooth
★ Mellow

HIGHLANDER

Brewed for
Your Refreshment
By the
MISSOULA
BREWING COMPANY

