

University of Montana

ScholarWorks at University of Montana

Montana Kaimin, 1898-present

Associated Students of the University of
Montana (ASUM)

1-23-1953

The Montana Kaimin, January 23, 1953

Associated Students of Montana State University

Follow this and additional works at: <https://scholarworks.umt.edu/studentnewspaper>

Let us know how access to this document benefits you.

Recommended Citation

Associated Students of Montana State University, "The Montana Kaimin, January 23, 1953" (1953).

Montana Kaimin, 1898-present. 2880.

<https://scholarworks.umt.edu/studentnewspaper/2880>

This Newspaper is brought to you for free and open access by the Associated Students of the University of Montana (ASUM) at ScholarWorks at University of Montana. It has been accepted for inclusion in Montana Kaimin, 1898-present by an authorized administrator of ScholarWorks at University of Montana. For more information, please contact scholarworks@mso.umt.edu.

Forester's
Convo
At 9:40
This Morning

Montana
State University,
Missoula, Montana



THE MONTANA KAIMIN

Friday,
January 23, 1953
Vol. 54 No. 52

The
Bobcats
Are
Coming

Coppedge, Leuthold Resign From CB Positions; Special Replacement Elections Soon

Central board members, meeting in President McFarland's counseling room, yesterday afternoon accepted the resignations of Dave Leuthold, Molt, and Jack Coppedge, Polson.

Leuthold, junior class representative, is not on campus this quarter, and Coppedge, senior class representative, is busy with athletics.

The term of the senior delegate expires in June. That of the junior delegate lasts through a year from this June, or approximately a year and a half.

Petitions by Tuesday

Students interested in seeking election to either office can obtain petitions today at the Student Union business office. Instructions are printed on each petition. Petitions must be turned in by Tuesday, January 27, for a student to

be eligible to enter the primary election.

At the primary which takes place January 30, two candidates for each office will be selected to run in the general election February 4.

C-Board Withdraws

Also at yesterday's meeting, upon recommendation of Budget and Finance committee chairman Don Cameron, Central Board voted to withdraw from the Missoula Chamber of Commerce. By leaving the organization, Central Board retains a \$36 yearly membership fee.

Discussion of a new Student Union occupied much of the Board's time, but no decisions were reached.

Music School Nite Club Is Saturday Night

"The annual Nite Club dance, scheduled for tomorrow night in the Gold room of the Student Union, will be semi-formal (girls in formals, men in suits)," according to Asst. Prof. John Lester, director. Dancing will begin at 9 p.m.

The Nite Club atmosphere will be set in a blue and white theme, with a blue and white crepe paper canopy above the tables and a horseshoe-shaped dance floor around the band stand. In each corner there will be a large silhouette of dancers from the past, outlined by spotlights. The programs, using a ballet theme, will be yellow and black and white and black.

The floor show, Panorama in Song, which will begin about 10:30, will "trace musical styles from grandpa's time to 1953." Paul Abel, instructor of brass, has been in charge of the musical arrangements, and the entire show was produced and directed by John Lester, Gib Leibinger, and Robert Hoyem.

Reservations, which must be made in advance, may be obtained in the Student Union at \$3.00 a couple, according to Dick Fletcher, Billings. Proceeds from the dance will go into the music school's foundation loan fund.

Health Service Facilities Pressed With Overflow

Eight students are in bed in the infirmary and three in the New Hall basement with cases of flu, mumps, or measles, reported Dr. M. P. Wright of the Health Service Thursday. Butler Hut, adjoining the Health Service infirmary, is being readied for more flu patients. Those sick persons living in Missoula have been sent home.

Dr. Wright stressed the fact that the diseases "hadn't reached epidemic conditions on the campus yet."

Finding space for all the patients is a problem said H. J. Wunderlich, dean of students. "The complication arises in trying to find adequate facilities for men and women with a variety of communicable diseases." This condition has been termed an "emergency." He said space was available in the west end of South hall as well as in New Hall.

"We are badly in need of registered nurses," said Dr. Wright. "We can use only registered nurses. Two nurses and some orderlies have been hired to care for the cases."

Time-Life Man Slated for Three Lectures Monday

Foreign correspondent John Scott, a member of the editorial staff of Time and Life, speaks at MSU Monday in a series of three lectures to be given in the morning and afternoon.

Mr. Scott will discuss "Europe's Second Renaissance" at 10 o'clock and "America's Impact on Europe" at 11 o'clock. Both morning lectures will be in Main hall auditorium.

In the afternoon, he will lecture in the auditorium of the Journalism school on the topic "U. S. Journalism." This lecture will begin at 4 o'clock.

Mr. Scott lived in Russia for nine years before World War II. In 1941, he was correspondent for Time in Japan. During the war and afterwards, he worked for Time and Life in such foreign capitals as London, Stockholm, and Berlin.

The three lectures are open to the public without charge.

Hoop Team Granted \$700 More

ASMSU's Athletic board Wednesday night agreed to give the athletic department an additional \$700 so that 12 rather than 10 players might be taken on basketball trips, Danny Lambros said.

Coach "Jiggs" Dahlberg asked for more money after the MSU game with Colorado A & M. The Grizzlies lost 93-86 making 42 fouls which Colorado made count for 37 points. Dahlberg said that if more players had been available, the outcome of the game might have been different.

Lambros said that the agreement was made on the condition that a \$700 saving would be made in another part of the budget. He said it will probably come from the \$10 refunds from fees which ASMSU pays for all those having athletic scholarships. This money will be refunded at the end of the year and will amount to just about \$700.

A motion to give 31 freshmen and 37 varsity men football letters was tabled until Ed Chinske could be consulted. The ASMSU constitution as well as the Skyline conference rules say that only a total of 22 freshmen players can receive letters. Also, Lambros said that some of the board members were doubtful as to whether some varsity men had fully met the Skyline rules for receiving a letter.

The rule for awarding letters to varsity men in the Skyline conference reads as follows:

"To be eligible for a letter a player either shall have participated in a total of 90 minutes or in one-half of the total quarters of conference games and such other games of the season as his institution shall deem equivalent to conference games."

New Jumbo Hall Officers Elected

Jumbo hall elected officers last Tuesday to serve for the remainder of the year.

Jim Musgrave, Cleveland, Ohio, is the new president; Jack Hautzinger, Omaha, Neb., vice-president; Dick Neubauer, Wolf Point, secretary-treasurer; Jim Godward, Livingston, social chairman; Jack Zygmund, Havre, athletic director.

Student Union Committee Outlines Problems of New SU-Field House Merger

The New Student Union committee, headed by Peder Hoiness, Billings, met again Wednesday night with President Carl McFarland to discuss the problems of the Student Union-Field House combination.

Cyrlle Van Duser questioned the committee as to just what the students want in their Union. There are three kinds of Student Union, she said. (1) The facility type such as we have now, providing coke store, book store, offices, and ballrooms. (2) The activities type which provides for bowling, game rooms, and general group activities. (3) The curricular type which accommodates facilities, activities and a form of cultural leadership through hobby shops, outing headquarters, and art and photographic displays.

Blanket Survey

The major undertaking of the committee is to determine what the student body wants in its Student Union. A blanket survey of the

entire campus will be made next week by contacting each of the various living groups and the dorms. President McFarland said, "If some tentative judgements were made, I would be willing to take some risk . . . on the part of the administration."

Distances from the various buildings and living groups to the present Union, the Field House site, and other possible Union locations will be determined from a scale map of the campus, to compute traffic.

Non-Student Crowd

Concerning the question of keeping the non-student crowd out of the Union if it were placed in the Field House, President McFarland said, "Traffic must be directed" and a concession service for the public will be open apart from the student coke store.

"Ventilation problems will be taken care of by six large separate ventilators," he said. This would mean that no space in the Student Union need be left for heating or ventilation facilities, making available considerably more space for facilities.

A Rental Proposition

Vince Wilson, PE department, asked, "Is this just a rental proposition, or can we eventually buy it?" President McFarland answered, "I don't think that's a very realistic situation because you don't own this one . . . but I would rather have this space serve the students than anything else." You must "visualize this thing in terms you understand . . . and see what you get. The number of square feet available is the important thing," and in case Dornblaser is moved in the future, in order to make room for more buildings, the Field House will be in a central locale.

Council Invites Student Workers

The Student Religious Council would like to extend an invitation to all those students who would be interested in working with the council in making plans for next year's Religious Emphasis Week according to Betty MacLeish. For those interested there will be a council meeting Monday, January 26 at 4 p.m. in the Eloise Knowles room. Students may leave their names in the School of Religion office in the temporary office building if they cannot attend the meeting.

WOMEN'S GYM AVAILABLE FOR BASKETBALL PRACTICE

The Women's gym will be open from 1 to 5 p.m. today for women's basketball practice. Women who are participating in intramural games should sign up on the practice schedule according to Deanne Thorsrud.

STUDENTS ARE CHARGED FOR LATE CLASS CHANGES

All students turning in drop and add cards this week are being charged a \$2 fee, Registrar Leo Smith said. Any student who drops a course after next week may be subject to an "F" in the dropped course if his work has been poor.

Foresters to Honor Paul Bunyan And Babe at Today's Convo

Foresters will advertise their Forester's ball, the dance in honor of "the patron saint of lumberjacks—Paul Bunyan," at a convo this morning in the Student Union auditorium.

Entertaining lawyers and students will be Francis Kirschten, Baker, singing "The Forest Ranger." Dooyne Tank, Hettinger, N. D., will sing "Home." Don Wells, Missoula, and George Stone, Missoula, will sing a duet. Other "top entertainers" will be on hand, according to foresters.

Paul, and Babe the blue ox, are

expected in Missoula any day now. When their tracks appear on campus tickets will go on sale in Forestry 101.

The Forester's ball will be a one-night stand this year, according to Chief push Dave Kauffman, Rocky River, Ohio. The large increase in the enrollment in 1948 turned the dance into a two-night affair to accommodate all wishing to attend. With enrollment similar to the pre-war period, a one-night stand was recommended by the executive board of the Forestry club.

Frosh Quartet Makes MSU Debut . .



One group from the music school which will sing tomorrow night at the Nite Club Dance is the freshman quartet pictured above. From left to right: Don Schessler, Laurel; Lewis Knox, Helena; Tom Nelson, Great Falls, and Bob Spiwak, Rumson, N. J. Accompanying the group is Jill Hageman, Billings.

The Montana KAIMIN

Established 1898
The name Kaimin (pronounced Ki-men) is derived from the original Selish Indian word and means "something written or a message."
Published every Tuesday, Wednesday, Thursday, and Friday of the college year by the Associated Students of Montana State University. Represented for national advertising by National Advertising Service, New York, Chicago, Boston, Los Angeles, San Francisco. Entered as second-class matter at Missoula, Montana, under Act of Congress, March 3, 1879. Subscription rate \$3.00 per year.

Member,
Montana State Press Association
Member, Rocky Mountain
Intercollegiate Press Association

Editor, Lew Keim; Business Manager, Joy East; Campus Editor, Allan Rose; Copy Editor, Bill Jones; Sports Editor, Jack Zygmund; Feature Editor, Betty Smith; Assistant News Editor, Carla Wetzstein; and Circulation Manager, Loy Robinson.

Printed by the University Press 55

Father Marquette, for whom Marquette university is named, died at the age of 30.

See the
**1953 Remington
Portable**
At
WES STRANAHAN'S
**Missoula
Typewriter Co.**
511 South Higgins

Jubileers Trip Receives Praise From Listeners

A stranger walked up to President McFarland in the Plaza hotel after the Jubileers had returned from their tour and said, "You don't know me but I just wanted to tell you what a wonderful singing group the Jubileers are. I heard them the other night in Great Falls, and the University should be proud of them."

"The singing was greatly enjoyed by all who were able to attend and the program was broadcast over the hospital radio enabling bed patients to enjoy it too," was the statement made by Meredith T. Pittman in a letter to Andrew Cogswell, publicity director. Mr. Pittman is the chief of special services of the Miles City Veterans hospital.

Harley Weydt, mayor of Red Lodge wrote, "A very fine group of people; we really enjoyed them a lot and we hope to see and hear them again next year."

"It would be impossible to feature any single individual in the Jubilee singing group for each member is a soloist," Lloyd Oakland, director, said. "They all take turns singing the solo numbers."

Director Oakland said they hope to put on a program for the students sometime this year.

**Tops for Radio and
Electrical Repairs
Walford Electric**
513 S. Higgins—Ph. 3566

More Union Questions Answered by President

At dinner table discussions, executive meetings, and Coke store conversations, the new Student Union leads the talk-parade. Central Board, Student Union boards, and lesser organizations have devoted their meetings toward a study of MSU's newest problem.

Meanwhile, Pres. Carl McFarland travels from meeting to meeting, answering questions, and explaining the intricate problems that develop simultaneously with any building project. In Thursday's Kaimin the president answered seven questions. Today, he answers seven more, helping to paint a clearer picture of Student Union negotiations.

1. Would combining the Student Union with the Field House help the Field House?

"It would, definitely, in at least one respect. The attic of the additional building will make it possible to extend the balcony in the auditorium to the extent of 1,200 theater seats, which would help produce more revenue at games and entertainment."

2. Could the Union be completely closed off from the Field House?

"Yes, the additional building would be just as much of a separate structure as the present Student Union."

3. If the Student Union was built, would it be the students' own building?

"It could be just as much theirs as is the present Student Union."

4. Would the building as a whole still be called the Field House?

"It can be called almost anything suitable. I would suggest that it be called the University "Union" or "Common," or "Center."

5. Do you, yourself, favor the

combination of Union and Field House?

"I am inclined to favor it because I think students can get several times as much in this transaction than they could in any other way. But I would prefer to remain an interested bystander, even more so than during the Field House discussions."

6. Will the Field House and Union combined help to cut costs?

"Yes. Costs could be reduced most noticeably in heating and power lines being combined, one roof for both buildings, and reduction of cubic concrete needed."

7. Do you think students could

GOLDEN PHEASANT

11:30 A.M. TO 12 P.M. WEEKDAYS
11:30 A.M. TO 3 A.M. SATURDAYS
(Closed Wednesdays)

build a separate Union if they disapproved of the Union-Field House combination?

"It depends on how far students wish to go in shouldering financial obligations. The structure and furnishings for the proposed Union next to the Field House would cost nearly one million dollars if built separately. It would present a definite problem for students to undertake such a program."

**ALASKA, HAWAII
and the WEST**
Exceptional opportunities. Register now!
Western certification booklet with
Free Life Membership
HUFF TEACHERS AGENCY
2120 Gerald Ave. Phone 6653
35 Years of Service Member NATA

YELLOW CAB

Ph. 6644

No Waiting

Jim Thane Says:

IF IT'S BRAINS YOU ARE LOOKING FOR, GO SEE YOUR BUTCHER. If you want a first quality dry cleaning job with excellent service, SEE US. WE DEPEND ON PLEASING YOU TO MAKE A LIVING and we are eager to do the best job we can for you so you will tell your friends what a good deal you got here. AND YOU DON'T HAVE TO WAIT FOREVER TO GET YOUR CLOTHES BACK. Remember our slogan: "IN AT TEN DIRTY; CLEAN AT TWO THIRTY."

LET US DO YOUR DIRTY WORK.



DRIVE-IN CLEANERS 420
DIAL 3131 FOR FREE PICK-UP AND DELIVERY ORANGE

24-HOUR SERVICE

**DE LUXE
CABS**

Call 6664



Homemade Candy

Sandwiches Fountain

PALLAS CANDY COMPANY

NEXT TO THE WILMA

Today's Meetings

Faculty center, 8 p.m. preview of MSU movie, discussion of script and music possibilities by faculty attending.

Montana Forum, 12 noon, Eloise Knowles room.

School of Religion, 3 p.m., Eloise Knowles room.

Gripe Board, 4 p.m., Student Union, Sentinel picture.

Canterbury and Westminster clubs, 5 p.m., Sunday at Presbyterian church.

Lutheran Student association, Sunday, 5 p.m., St. Paul's church.

Wildlife club, 7:30 p.m., Monday, Forestry 307.

Classified Ads . . .

FOUND: Men's brown oxford in front of Corbin. Claim at Student Union business office. tf

FOR RENT: Three-room apartment at Fort Missoula housing. Partially furnished, \$22 per month. Available to faculty and qualified students. See or call Fred Henningsen. 55c

LOST: Light tan wallet in men's locker room between 3:30 and 4:30 Thursday. May keep money; please return wallet and important credentials. Call Ken Duffy at 6912. 52c

FOUND: One Parkette pen in Craig hall. Inquire 111 Corbin hall. tf

LOST: Lady Elgin wrist watch between Jumbo hall and DG house. Call 9-0733. 53p

WANTED: Three men roomers. 324 Daly. tf



**ELI WOOD
Auto Repair Shop**

303½ East Front Street



On Valentine's Day—
Your Portrait By

ROBERT M. CATLIN
HAMMOND ARCADE
Phone 5364

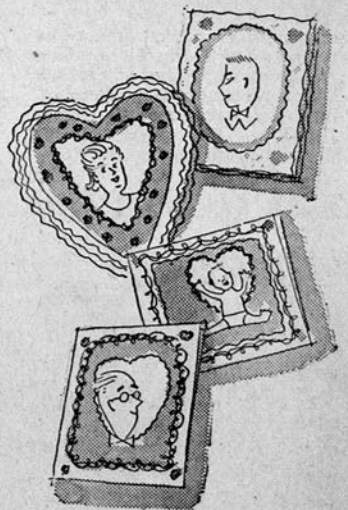
. . . a date to remember!

FOR YOUR FEB. 14 SWEETHEART

VALENTINES

So much fun to
select and receive
. . . delightful and
different Valentine
cards from our
collection. Valen-
tines for everybody
dear to your heart.

Better shop early
for widest and most
select choice.



CHINA AND GIFT SHOP . . . Street Floor

The Mercantile

State Hoop Crown at Stake In Contests With Bobcats

HEFTE'S MUSIC SHOP

Cubs, Spartans In Match Here Saturday Night

This will be the second game for the Cubs this season who have been working under the direction of Eddie Chinske. The Cubs defeated the Anaconda high five over the Christmas vacation.

FOX

IT COSTS NO MORE TO GET THE BEST

modern plant
modern methods

Ken-Mar Cleaners

2330 South Higgins

No Names Top SGE Quintet; Corbin Wins

The No Names handed SGE its first loss, 46-32, in Wednesday night intramural play. Corbin picked up its second win against one loss when it beat the Oddball's Athletic club 35-27 in the other B loop contest.

Taking a 13-5 first quarter lead, the No Name five had little trouble in keeping down the Geology crew. Ralph Cates found the basket for 20 points to taking scoring honors for the No Names, and Keith Dyas dumped in 14 for SGE.

Corbin started out with an 11-3 opening period margin, and though they let down the second half, scoring only nine points, the Odd-balls couldn't overcome Corbin's lead. Dick McDonald led the dormitory squad with 11 markers.

RETRACTION . . .

In yesterday's issue of the Kaimin, we incorrectly stated that Humanities pulled the season's upset, by defeating Air Science three straight games. The head should have read, Physical Education pulls season's upset.

Dry Skin...
turns soft in seconds!

Elizabeth Arden's
Orange Skin Cream



No need to put up with dry skin (and its threat of lines and wrinkles)! The rich, super-refined oils in Orange Skin Cream make skin petal-soft, dewy-smooth after ONE application! 1.25 plus taxes

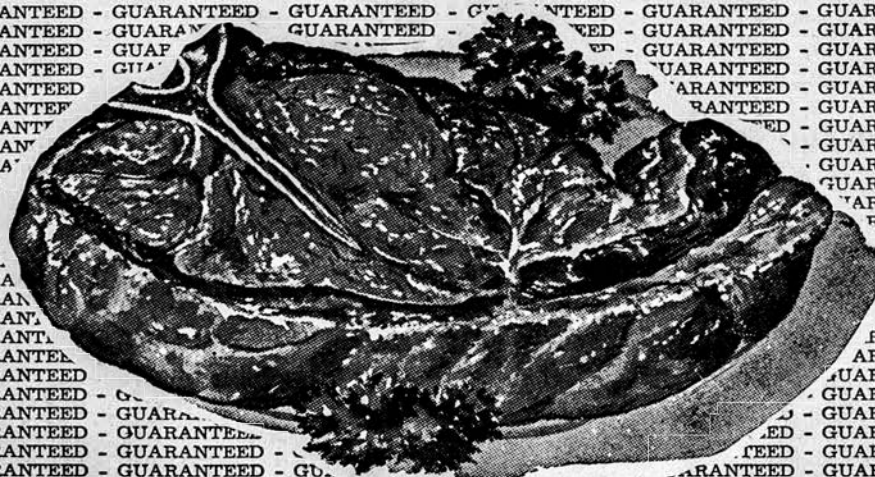
Follow this Basic Beauty Ritual

CLEANSE with Ardena Cleansing Cream, 1.00 to 6.00

REFRESH with Ardena Skin Lotion, 1.00 to 9.50

SMOOTH with Orange Skin Cream, 1.25 to 8.50 prices plus taxes

COFFEE'S
Missoula Drug
THE HOUSE OF SERVICE: *Company*



4 B's CAFE

[illegible]

Nite Club Tops Society

This weekend promises to be a busy one with the Kappa Kappa Gamma scavenger hunt, the Alpha Tau Omega fire-side, and the Nite Club dance in the Student Union.

Skiing enthusiasts have given up all hopes that more snow will fall but the Grizzly-Bobcat games on Monday and Tuesday may make them forget the weather.

Delta Gamma

Girls living in the house this quarter are: Joyce Corning, Butte; Lynn Erb, Billings; Shirley Leffler, Forsyth; Mary Lou Marsh, Sheridan, and Donna Murray, Missoula.

Delta Delta Delta

The Kappas were exchange dinner guests Wednesday.

Alpha Tau Omega

Bill Thomas, Billings, and Maynard Saurey, Columbia Falls, are recent pledges.

Kappa Kappa Gamma

Joan McKenzie, Missoula, was

a guest of her sister, Jan, last week end at the house.

Sigma Kappa

Jane Gaethke, West Salem, Ohio, is leaving Jan. 31, for Columbus, Ohio, where she will marry Bill Brandt, Columbus, on Feb. 4.

The alums met at the house Tuesday night.

The Alpha Phis were exchange dinner guests Wednesday night.

Kappa Alpha Theta

The pledges took a sneak with the Phi Delt pledges.

Phi Sigma Kappa

The Phi Sigs will have a rush party Saturday afternoon at 3 o'clock.

Sigma Alpha Epsilon

Sylvia Sprunger married John McDonald, in Virginia City Jan. 10.

Pete Densmore, Los Angeles, pinned Carol Karr, Tri Delt, Great Falls.

Sigma Nu

Approximately 30 alumni were dinner guests at the fraternity Wednesday evening. Most of them were members of the Missoula Sigma Nu alumni club.

The Sigma Nu's serenaded Marlene Cole, Missoula, at the Alpha Phi sorority Monday night. She is pinned to Byron Robb, Livingston.

Twenty-two pledges will become active Sigma Nu's following an initiation ceremony Sunday afternoon.

Sigma Chi

The 18 Sigma Chi sweetheart candidates were entertained at the Sig house Wednesday evening. Pictures were taken and there was a "get acquainted" session. There will be a jam session for the candidates Saturday afternoon from 2 to 4.

The sweetheart candidates are: Delta Gamma, Nancy Schilling and Brenda McPherson, Missoula; Delta Delta Delta, Beverly Eppe, Valier, and Kay Wohlgenant, Miles City; Alpha Phi, Gwen Dickson, Havre, and Bobette Reeder, Whitefish; Kappa Alpha Theta, Jeanne Hays, Billings, and Jean Webber, Joliet; Kappa Kappa Gamma, Mary Ellen Erickson, Missoula, and Mary Ann Burnett, Richland, Wash.; Sigma Kappa, Donna Nooney, Missoula, and Carol Dax, Billings; New Hall, Kay Nordby, Spokane, Wash., and Marianne Benson, Billings; North Hall, Marie Austin, Helena, and Virginia Van Horne, Wallace, Idaho; Synadelphic, Reva Taylor, Missoula, and Carol Grandy, East Helena.

Lt. Earl Sandvig, Denver, Colo.,

Ski Classes Begin AtDiamondToday

With some new snow at the Diamond Mountain ski area, ski classes will again meet today, said Deanne Thorsrud, PE instructor. Last week classes were cancelled.

Mrs. Thorsrud says for students to bring their equipment and to catch the bus for the ski area at 1:00 p.m. today in front of the Men's Gym.

Got a Job to Do? "Wire" for Help!

Electricity Will Do It
FAST - CHEAP



The Montana
Power Company

will marry Pat Schwarz, Theta, Missoula, this Saturday afternoon.

Peder Hoiness, Billings, is engaged to Lois Weeks.

Bill Stong, Billings, will be the Sigma Chi candidate for King of the Mardi Gras.

New pledge officers are: President, John Dunbar, Butte; vice president, Darrel Montag, Billings; secretary - treasurer, Fred Carl,

Hollywood, Calif.; social chairman, Dick Turbiville, Ekalaka.

Larry LeClaire, Great Falls, pledged this week.

For ---
Fine Cleaning
For ---
Fast Service
Send Your
Cleaning
to
**CITY
CLEANERS**
610 South Higgins

WHERE MUSICIANS
GATHER
Everything Musical
**ORVIS
MUSIC SHOP**

For a Completely Enjoyable Evening



Take
Your Date
for a
**STEAK
DINNER**
at
**DOAK'S
CAFE**
Before
The Show

DOAK'S - Next to the Fox

**M
U
R
R
I
L
'
S**
**Famous
Cocktail Lounge**

Stop
**AT
THE
93**
**For
FRENCH FRIES
AND
A COKE**

Not Much
Doin' This
Week End?
MAKE IT



THE NORTHERN

Dancing in the Rose Room
Free Shuffleboard.

Hot Franks for a Light Snack

201 W. Railroad

Missoula

**Safe
Buy
Used
Cars**

**GUARANTEED
EASY
TERMS**

**Safe
Buy
Used
Cars**

1951 Mercury 4 Door
1950 Mercury 4 Door
1949 Ford Coupe
1947 Chevrolet Coupe
1941 Plymouth Coupe

BAKKE MOTOR CO.
345 West Front
Lincoln **MERCURY**

REFRESHING

**Highlander
Beer**

Beer As It
Should Be