

University of Montana

ScholarWorks at University of Montana

Montana Kaimin, 1898-present

Associated Students of the University of
Montana (ASUM)

1-30-1953

The Montana Kaimin, January 30, 1953

Associated Students of Montana State University

Follow this and additional works at: <https://scholarworks.umt.edu/studentnewspaper>

Let us know how access to this document benefits you.

Recommended Citation

Associated Students of Montana State University, "The Montana Kaimin, January 30, 1953" (1953).

Montana Kaimin, 1898-present. 2884.

<https://scholarworks.umt.edu/studentnewspaper/2884>

This Newspaper is brought to you for free and open access by the Associated Students of the University of Montana (ASUM) at ScholarWorks at University of Montana. It has been accepted for inclusion in Montana Kaimin, 1898-present by an authorized administrator of ScholarWorks at University of Montana. For more information, please contact scholarworks@mso.umt.edu.

Forester's Ball

Foresters were dragging the last of 3,000 fir trees into the Men's gym yesterday afternoon in preparation for the Forester's ball tomorrow night from 9 to 12. Over 3,000 man hours have gone into the ball to make it the biggest dance of the year.

Tall fir trees line the walls of the gym. Wire strung from one end of the gym to the other and interwoven with cedar boughs gives the appearance of a thick forest. Trees also line a smaller room off the gym which will house the old western bar. A slab bar has been set up with thick planks for the top. The bar is an untrimmed fir rail. A rustic untrimmed rail bench sits in one corner. On the opposite side is an old honky-tonk piano. Beer kegs are placed around for atmosphere. A group of foresters in western costumes complete with string ties will serve soft drinks "on the house" to the crowd.

An exhibition room is being built off to the right of the gym. Rumor has it that it will be the interior of a logging camp bunk house complete with a pot-bellied

stove and a lumberjack's washing strung across from wall to wall. Five hammer-pounding foresters refused to verify this report so the exhibition room will remain a secret until tomorrow night.

Foresters will be serving chow consisting of doughnuts and coffee in the forestry building. True to the custom of the old West, no charge will be made for refreshments.

Entertainment during the intermission will be by the "Old Foresters," an octet from the forestry school. Prizes for the beard and costume contests will be awarded at this time. Doyne Tank, Hettlinger, N. D. will sing some forestry favorites.

Co-ordinating the 13 committees working on the ball is the job of the chief push. This year's chief push is Dave Kauffman, Rocky River, Ohio. Assisting him is Johnny Lowell, Sioux Falls, S. D.

Tickets were sold out at 5 p.m. yesterday. A limited number may be on sale at the door tomorrow night.

No smoking will be allowed during the ball except in posted areas, warned Kauffman.

Carson Likes Role of Willy Loman Because it Reflects 'Trials of Life'

BY MARGE FOOT
"I am especially fond of this part in this play because the character of Willy Loman represents some of the trials and tribulations that all of us have known directly or indirectly. Looking at Willy Loman is like looking through the keyhole at life itself."

This statement was made by Herb Carson, MSU speech instructor. He will play Willy Loman, the salesman, in the forthcoming Masquer production, "The Death of a Salesman."

Mr. Carson has had a good deal of experience acting in university

productions. As a speech and drama major at the University of Illinois, he appeared in such plays as "Midsummer Night's Dream," "Riddle Me This," "Lilliom," "Dracula," "Shadow and Substance," and "Twelfth Night."

He has also taken part in dramatic radio productions over such Illinois stations as WILL, WENR, and WBBM. During his five years at MSU he has appeared in "Our Town" and "Joan of Lorraine."

"I feel it would be a profitable experience for every college student to take part in some dramatic production," Mr. Carson said.

'Death' Players Practice . . .



This is a scene from the Masquer's next production, "Death of a Salesman," which opens next Tuesday in Simpkins Little Theatre. The play, which covers the last 24 hours in the life of Willy Loman, will run through Saturday, the 7th. Players, left to right, are Pat Koob, Missoula; Jack Shapira, New York, N. Y.; Herb Carson, Missoula; and Tom Sherlock, Great Falls.

New SU Committee Starts Survey Today

BY BEV PRAETZ

Gripe System Is Developed

Gripe board is working on a system to further student guidance in extra-curricular activities, according to chairman Tom Sherlock, Great Falls.

Every student on campus will be asked to fill out a card indicating his preferences for certain activities. The cards will then be filed in such a way as to be easily sorted according to interest. Sherlock said this will make it convenient for committees seeking workers to quickly find and contact only those who are interested in doing particular jobs.

He said that some students filled out cards during registration but for those who didn't, cards will be sent to living groups for completion.

Gripes on the Field House-Student Union have been postponed until the poll on what the students want in a Student Union is finished.

Three projects are underway in the plans for the Student Union-Field House, according to Peder Hoiness, Billings, New Student Union committee chairman. They are space studies, facility plans, and the campus survey which was taken last night.

Mary Mattson, Missoula, and Jary Nelsen, Conrad, will compile the survey and results will be in the Kaimin next

Flu Receding On Campus

The number of cases of flu on campus is decreasing, Dr. M. P. Wright, director of the Health Service, announced yesterday.

With the flu receding, Dr. Wright said, general health conditions of people on the campus is much better. There are still a couple of cases of mumps, but no measles or chicken pox.

The New hall basement is being kept ready for possible isolation cases. However, there are no patients there at present.

week. This opinion poll is designed to give the planning committees some idea of what the students want if the Student Union is combined with the Field House.

The New Student Union committee is making a list of questions to present to the Executive committee concerning the functional planning of the proposed building. Some of these questions will concern:

- (1) Financing the interior of the building.
- (2) Alternatives as to location or remodeling of the present building.
- (3) Will it be a Student Union or a community center?
- (4) Will the profits go into paying for the Field House or will they go to pay for the student part of the building?
- (5) What will be done with the old Union?
- (6) Do we have an ethical equity, and if so do we have a financial claim on the present building that we can apply to the new one?

Under the system that we have on this campus, we pay money into the building but can never actually own it. The reason that this is true is because MSU is a land grant institution, all buildings and facilities on the campus belong to the State of Montana. Then, it can be said that the only equity that the students will have in any student building is an ethical one.

'Fish Bowl' Nite Club Dance Makes Grand Opening Tonight

Attention MSU sailors, mermaids—and land-lovers too! The "Fish Bowl" nite club dance will open for the first time tonight at 9 in the Copper room of the Student Union.

The club will be open until 12:30, but the Bearpaws who are sponsoring it say, "For a few minutes or a few hours—come on over."

The new "Fish Bowl" will be open every weekend night that there is no major university function.

The club will have a regular nite club atmosphere decorated in accordance with the "Fish Bowl" theme. Hugh DeMers, Arlee, chief Grizzly, said that it will be a date or stag affair. There will be dancing, entertainment, specialty acts, and food—a dish which the Bearpaws call Neptune's Noodles—for sale. There is no cover charge.

The Copper room was redecorated especially for the nite club by the Student Union executive committee. Harry Roletto, who exhibited some of his paintings in a show at the Union last fall, painted murals on the walls. These also carry out the theme of the "Fish Bowl."

The Student Union and Bearpaws are operating the night club on a cooperative basis and will split the profits.

Petition Rules Are Outlined

Petitions for the Associated Women Students primary election February 18 are due Wednesday, February 11.

The petitions must be signed by ten women students and given to Marilyn Foster or to an AWS representative. No woman can sign more than one petition for a given office.

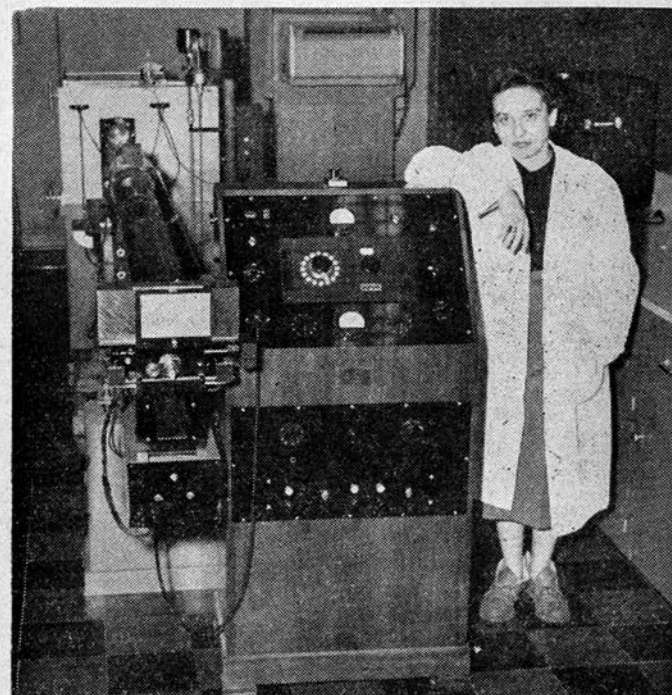
AWS presidential candidates must be of junior standing in credits, and must have served as a voting member of the AWS board for one year.

Dwyer Elected Institute Member

Edwin O. Dwyer, MSU business administration instructor, has been elected a member of the American Institute of Accountants. The institute is a national and professional organization of certified public accountants.

Dr. Dwyer has a certified public accountant certificate from the state of Montana and is a member of the Montana Society of Certified Public Accountants.

Dr. Loran and Electrophoresis . . .



Dr. Muriel R. Loran, assistant professor of pharmacy, is shown above with a \$10,000 Klett electrophoresis, which was purchased with grants from the Damon Runyon Memorial fund and the American Cancer society. The machine will open further research in animal tumor research.

Ticket Selling Contest Staged For Concert

The annual winter concert of the Mendelssohn club, Tuesday, February 3, is being aided by a ticket selling campaign between the freshman, sophomore, junior and senior class members of the A Cappella choir.

Five hundred student tickets were given to the choir by the Missoula men's singing group for the purpose of aiding the choir in its drive for funds for the coming

A Bitter Bit . . .

The education of the American girl should include four fundamentals: how to keep her character; how to keep her health; how to keep her husband; and how to keep.

trip to Bellingham, Wash.

Lloyd Oakland, director of the choir, says that the awards will be made to the winning class in the junior-senior group and the freshman-sophomore group. Losers will carry the luggage of the winners and also buy them one meal while on the trip. High individual salesman for the entire group will receive a special award.

All the money received from the sale of these tickets will be kept by the choir which has accepted an invitation to perform for the Northwest Music Educators conference in March. The invitation was extended on the basis of the choir's performance in several recent national broadcasts.

EDITORIAL—

Both Barrels For Aber Critics

Since the sun set on Aber Day last year there has been considerable discussion by various faculty members to abolish the reverend day from the ASMSU spring calendar. Whether these faculty Aber Day opponents will be able to muster the strength to defeat Aber Day is debatable.

We turn to the leaders of the Aber Day committee and reiterate their comments of Wednesday night's meeting that this year we should correct the faults of Aber Day and smooth-over faculty differences.

We also say to the Aber Day committee to load both barrels: the right barrel with tradition and student rights, the left barrel with constructive ideas, and then declare open season on faculty Aber Day foes.—LK

The Montana KAIMIN

Established 1898

The name Kaimin (pronounced Ki-men) is derived from the original Selish Indian word and means "something written or a 'message'." Published every Tuesday, Wednesday, Thursday, and Friday of the college year by the Associated Students of Montana State University. Represented for national advertising by National Advertising Service, New York, Chicago, Boston, Los Angeles, San Francisco. Entered as second-class matter at Missoula, Montana, under Act of Congress, March 3, 1979. Subscription rate \$3.00 per year.

Member,
Montana State Press Association
Member, Rocky Mountain
Intercollegiate Press Association

Editor, Lew Keim; Business Manager, Joy East; Associate Editors, Bill Jones, Betty Smith, Carla Wetzsteon, and Ray Moholt; Sports Editor, Jack Zygmund; Photographer, Ted Hewett; Circulation Manager, Dave Nelson; and Faculty Adviser, Prof. E. B. Dugan.

Printed by the University Press 55

A BITTER BIT

Obsessed with the idea that everyone was fit for college, we have tried to make the college fit for everyone.

Tops for Radio and Electrical Repairs

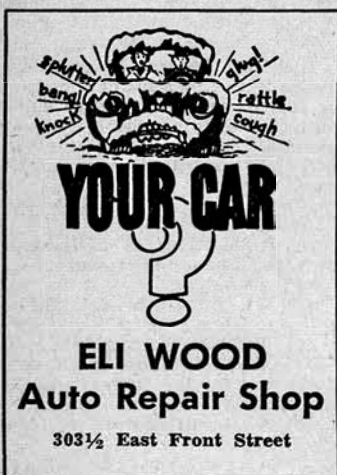
Walford Electric
513 S. Higgins—Ph. 3566

Starting Sunday!



Bing CROSBY
Bob HOPE
Dorothy LAMOUR

Road to Bali
COLOR BY TECHNICOLOR
FOX THEATRE



YOUR CAR

ELI WOOD
Auto Repair Shop
303½ East Front Street

See the
1953 Remington Portable
At
WES STRANAHAN'S
Missoula Typewriter Co.
511 South Higgins

Forum to Discuss Proposed Lease Of School Lands

The Montana forum will discuss the legislative proposals of leasing the state school lands for oil development at a meeting Feb. 5 at 8 p.m. in Journalism 304. Prof. K. P. McLaughlin will be the moderator.

Speakers will be Martin P. Moe, executive secretary of the Montana Education association; William T. Boone, Missoula lawyer on the school board legislative committee; W. M. Saxon, Pure Oil company representative; and Howard Gullickson '35, now with Shell Oil company at Casper, Wyo.

Bob Fraser is chairman of the Montana forum.

Women to Select Ski Team Monday

There will be a meeting of all women interested in being on the women's ski team Monday, Feb. 2, at 4 p.m. in the Women's gym according to Beryl Handford, Kalispell, WAA president. The team will represent MSU at the Northwest district meet at Stephen's pass Feb. 20, 21, and 22 under the sponsorship of the University of Washington. Women who cannot come to the meeting, but would like to be on the team should send someone to represent them. Five girls will be chosen for the team.

The MSU team won the Northwest district meet at Big Mountain last year. At that time the women's ski team was chosen by taking the top five times made by women in the intramural meets. Because of the lack of snow, the intramural ski meets were indefinitely postponed this year.

Charles Lindbergh attended the University of Wisconsin.

Classified Ads . . .

LOST: Pair glasses, brown case. Near Library Monday. Phone Ruth Palmer. 9-2280. 58c

FOR RENT: Attractive room for woman. Two blocks from campus. 433 McLeod. Call 7597 evenings. 58c

WANTED: Upperclassman to share apartment. 130 S. Fourth. Call Kaimin Business manager or editor. 58c

FOR SALE: Underwood champion portable. Excellent condition. \$50. See A. L. Porter, No. 11 Dawson. 58c

FOUND: An expensive pen. Can have by identifying. See Leon Conner between 7 and 10 at the Student Union. 58c

FOR SALE: Pair skis, 6½ feet with binders. Pair men's skates, size 8. Both practically new. 545 Livingston Ave. Call 4555. 58c

Our Newest Album—

"MR. PRESIDENT:
FROM F.D.R. TO
EISENHOWER"

**HEFTE'S
MUSIC SHOP**
310 North Higgins

A Love Story by
JEAN COCTEAU

"ELECTRIFYING! POWERFUL LOVE STORY OF A PASSIONATE INTIMACY!" —Newsweek

"CURRENT & CHOICE ALWAYS FASCINATING!" —Time

CAMPUS Theatre
2023 South Higgins
Curtain Times 7:00 - 9:15

"The Strange ONES"
AN EROTIC DRAMA OF BROTHER-SISTER LOVE

For
COURTEOUS

SERVICE

CALL A
DeLuxe Cab
6664
24-HOUR SERVICE

Jim Thane Says:

LADIES WHO CARE TO DROP BY AND LEAVE THEIR DRY CLEANING WILL RECEIVE PROMPT AND COURTEOUS ATTENTION. We specialize in unexcelled quality and service in a minimum of time. Remember our slogan, IN AT TEN DIRTY, CLEAN AT TWO THIRTY. We depend upon satisfied customers to make a living and we want YOUR business. Let us do your dirty work.



DRIVE-IN CLEANERS 420
DIAL 3131 FOR FREE PICK-UP AND DELIVERY ORANGE

For Forester's—

JEANS SKIRTS
PEDDLE PUSHERS BLOUSES

Sail Cloth and Denim—All new colors and combinations. Gold, black, white, red, and blue.

A Wonderful Selection
For the Forester's Ball
and Afterwear.

Cecil's

MISSOULA MENDELSSOHN CLUB

presents

8th Annual Winter Concert

Student Union Auditorium

Tuesday, Feb. 3 - 8:15 p.m.

Sale of Students Tickets by A Cappella Choir
To Finance Their Trip to Bellingham, Wash.

GENERAL ADMISSION \$1.00 — STUDENTS 50¢

REDUCED—

Study Lamps
Table Lamps
Decorative
Dresser Lamps
All for the College Room



Sale

NOW AT BIG FEBRUARY SALES—BEGINS MONDAY

Lucy's Furniture Company

Jeans Replace Formals; Foresters Invade Society

BY BILLIE JONES

Crepe paper and strapless formals are the usual decorations at collegiate functions. No doubt the Ivy league social set would consider 3,000 trees slightly uncouth as a decorative motif for dancing atmosphere. But the Ivy league crowd has never experienced an equal to MSU's Forester's ball.

Some 36 years ago fir boughs created the atmosphere as couples vended their way into the ballroom. Tomorrow night, couples will again meander through bough-decked staircases, and dance hall patrons will again snag their burp-nylons on evergreen stumps.

Unusual attacks by lawyers to hamper proceedings have been repulsed without casualties. A conversation overheard near the law school Tuesday failed to mature into reality. One voice said, "While everyone's in the

gym seeing the Bobcats being whomped, we can swipe those trees easy as McFarland can negotiate a skyscraper." The second legal-eagle replied with an apathetic grunt. The trees were untouched; the Ball, as scheduled, will roll at 9 p.m.

North Hall

Helen Peterson, Great Falls, is North hall's candidate for Mardi Gras queen. Friday night North hall girls and their dates will take part in an informal fireside.

Kappa Alpha Theta

Mrs. Hazel Bell, Spokane, is visiting at the sorority. She is the district president. A Founder's day banquet at the Palace hotel was conducted during her visit.

The Delta Gammas and Kappa Alpha Thetas sponsored exchange dinners in each other's honor Wednesday.

Pat Schwarz, Missoula, was married Saturday to Dewey Sandvig,

Denver, Sigma Chi. A reception followed at the sorority.

Sigma Alpha Epsilon

New chapter initiates are Milt Wordal, Big Timber; Ken Leuthold, and Don Erickson, Laurel; Greg Wallander, Froid; Bob Bennie, Butte; Jerry Madden, Drummond; Keith Terrell, Billings; and John Earll, Great Falls.

New officers during the coming tenure are Don Campbell, correspondent; Pat Eyer, chaplain; Jim Graff, chronicler; Don Welch, warden; Ted Cogswell, herald; and McKinley Anderson, pledge trainer.

John Dundas and Bill Dehon, both of Great Falls, are new pledges. The Alpha Phis were exchange dinner guests Wednesday.

Kappa Kappa Gamma

Cecilia Twilde, Billings, is engaged to Ben Craig, Sigma Nu, Geraldine.

Alpha Tau Omega

New actives are Bill Holt, Columbia Falls; John Alton, Columbia Falls; Paul LeRoux, Butte; John Rounds, LaFayette, Calif.; Harvey Young, Fairfield; Tom O'Brien, Danielson, Conn.; and Bob Jackson, Dillon.

Weekend guests included former president Falle Nelson, Glendive, and Leonard LeRoux, Butte.

Sigma Nu

Eighteen new men now wear the five-armed star. Those being initiated Sunday include Jim Abbott, Kalispell; Ed Argenbright, Cut Bank; Lee Bayley, Silverton, Ida.; Dick Bergsing, Livingston; Jimmy Dick, Joel Roemer, Gene Woods, and John Duncan, Missoula; Bob Lazich and Jack Peterson, Butte; Gib Leibinger and Del Mathison, Miles City; Carl Olsen, Big Fork; Al Stipe, Opportunity, Wash.; Don Swerdfeger, Fort Benton; Jack Thom, Moore; John Vohs, Williston, N. D.; and Dick Woods, Saco.

Delta Gamma

Phi Delta Theta and Delta Gamma entertained groups from the respective houses at an exchange dinner Wednesday evening.

Delta Delta Delta

Lt. and Mrs. Tony Keast, Missoula, and Mr. and Mrs. Monte Supola, Missoula, were dinner guests Thursday. Tri-Delts were guests of the Sigma Phi Epsilon fraternity Wednesday at a dessert dance.

Phi Delta Theta

Jack Evans, Great Falls, is a new pledge. H. P. Brown, Great Falls, is pinned to Kari Hjermistead, Miss Hjermistead attends Northwestern university.

Alpha Phi

Phyllis Treweek, Kalispell, re-

ceived a diamond from Bob Kirk, Sigma Nu, Kalispell.

Jamie Yule, Missoula, is wearing the Sigma Phi Epsilon pin of Ray Halubka, Great Falls.

Nineteen girls became active members Sunday. They include Maryanne Beecher, Cascade; Louise Cooper, Kalispell; Shirley DeForth, Glendive; Billie Durham, Jamie Yule, and Mary Swearingen, Missoula; Darlene Forzley, Sally Smith, Jean Stephens, and Jackie Woodahl, Great Falls; Norma Hafferman and Lois LeDuc, Libby; Jill Hageman, Billings; Annamae Kovatch and Mary Anne Wyse, Conrad; Eleanor Schmidt, Browning; Alice Utson, Polson; and Gwen Dickson, Havre.

Phi Sigma Kappa

Marvin Hobbs, Kalispell, was elected junior delegate to interfraternity council.

New pledges are Wayne Fichtel, Aurora, Ill., and John Swedberg, Kalispell.

Life is full of untapped sources of pleasure. Education should train us to discover and exploit them.

JUNIORS—

VOTE FOR

Ron Faust
FOR
Central Board Delegate

(paid political advertisement)

LET US
Check Over

Your
Auto Electrical
System

FOR
BETTER STARTING
THIS WINTER

AUTO ELECTRIC
SERVICE

218 East Main
Phone 4716

For ---
Fine Cleaning
For ---
Fast Service

Send Your
Cleaning
to

CITY
CLEANERS

610 South Higgins

Homemade Candy

Sandwiches Fountain

PALLAS CANDY COMPANY

NEXT TO THE WILMA

AMATEUR BOXING

American Legion Hall

Friday, Jan. 30 — 8:30 p.m.

BOB FRASER, Billings vs. RONNIE SNYDER, Ronan

ROCKY ROMAND, Missoula vs. DICK CARPENTER, Hamilton

MARTY BEHNER, Missoula vs. GEORGE SHERMAN, Frenchtown

TOM TIDBALL, Missoula vs. BOB BEDY, Hamilton

Plus Other Bouts—Come Out and Support Your Man

ADMISSION \$1.25 (tax incl.)

For

FORESTER'S BALL

WOOL PLAID SHIRTS

YOUR CHOICE \$7.95

Values to \$11.95

COTTON PLAID SHIRTS

AT \$2.35

Also—

Levi's and Lee's—Men's and Women's

Yandt's
MEN'S WEAR

It's Time
To Meet
Your
Friends
At

THE NORTHERN

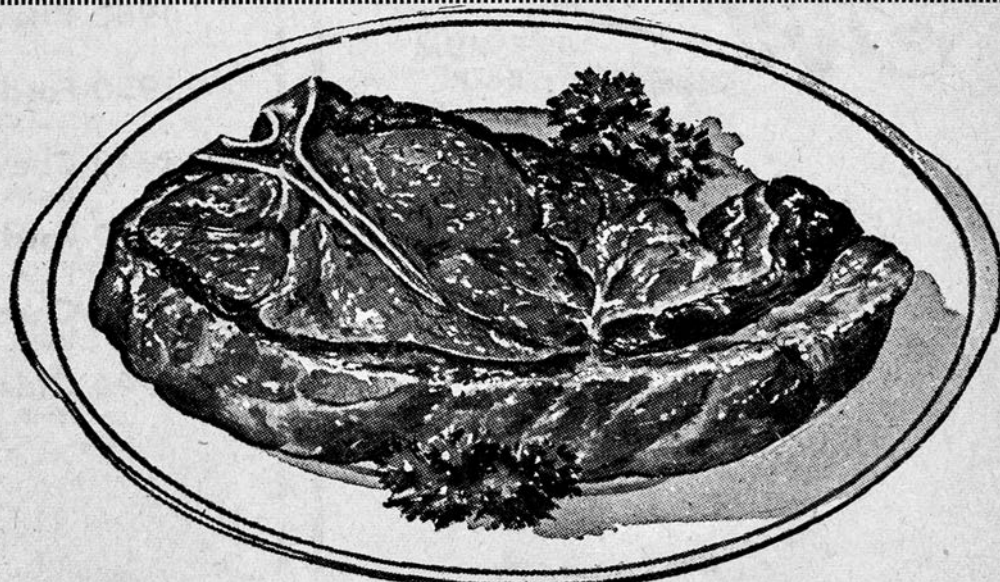
Dancing in the Rose Room

YOUR FAVORITE DRINK AT

"The Longest Bar in the Northwest"
Hot Franks a Specialty!

201 W. Railroad

Missoula



GUARANTEED STEAKS

4 B's CAFE

Grizzlies Seek Tenth Win Tonight

BY BOB CHESNOVER

It's the midway mark of the year for the Grizzlies as they encounter the toughest road trip of the season. Tonight the Grizzlies, winners in 9 of 13 games, meet BYU. Saturday night it's the Utah Redskins and on Monday the Utah Aggies.

Radio station KGVO will broadcast only Friday night's game with BYU. None of the other games will be broadcast over local stations.

The Grizzlies will find it tough going in Provo when they meet the BYU Cougars. Montana beat the Cougars here two weeks ago, 56-51, but the Cougars were without Joe Richey, their top scorer. This week end the Cougars will not only have Richey back in the line up, but

will also have the home floor advantage.

Their potentiality was proved last weekend when they blasted the league leading Wyoming Cowboys 71-42. This stopped Wyoming's 17-game conference winning streak. The Cougars also topped Colorado A & M 75-47 on their home floor last weekend.

This weekend the Cougars have a good chance to gain more ground on the league-leading Wyoming Cowboys. After meeting Montana on Friday night the Cougars take on Utah State.

Saturday night the Grizzlies meet the cellar-dwelling Utah Redskins. With Kent Bates and Bruce Goodrich, the two top Utes, operating on their home floor, the Utes will be looking

for their second conference win of the year.

Montana had an easy evening with the Utah team here two weeks ago, winning from the Utes 83-72.

On Monday the Grizzlies meet the Utah Farmers at Logan for the first time this season. The Aggies have won one contest and lost three. Last year the Aggies wound up third in the conference.

Skyline Standing:

	W	L
Wyoming	7	1
BYU	5	1
Colo. A&M	3	3
Montana	2	2
New Mexico	2	4
Utah State	1	3
Denver	1	3
Utah	1	5

ALASKA, HAWAII and the WEST
Exceptional opportunities. Register now!
Western certification booklet with
Free Life Membership
HUFF TEACHERS AGENCY
2120 Gerald Ave. Phone 6653
35 Years of Service Member NATA



AT
THE
93

For
FRENCH FRIES
AND
A COKE

SAE's Top Rodeo Club; Sig's Protest Allowed

The Sigma Alpha Epsilon quint continued on its winning way as it downed Rodeo club, 50-24, Wednesday night in the only intramural hoop game played this week.

Alpha Tau Omega and the Sooners were both handed a loss due to their failure to play the other game scheduled. The Sooners now have a two and two record, and the ATOs have but one win against three losses.

SAE had little trouble with the winless rodeo five. They took a 12-6 lead in the first period and ran it to 20-13 at the half. The SAE squad racked in 30 counters the last half, holding Rodeo club to three points in the third frame and eight in the last period, for the victory. Dale Kisling led the winners with 12, and his teammate Hans Hansen dumped in 12. Ray

Frank was high for Rodeo with six.

In Thursday afternoon's intramural managers meeting, Sigma Chi was awarded a reversal on their protested loss to the Blues. Hal Snippen of the Blues was ruled ineligible as he had been a member of the varsity squad and failed to drop out before the first regularly scheduled game.

George Cross, intramural director, stated that each team is to furnish a scorer and a timer for their own games and that teams which fail to do this cannot protest the game.

As it is now planned, the top four teams in each league will play in a single elimination tourney to determine the championship.

The Schedule

Monday, February 2—6 p.m., Corbin vs. No Names. 7 p.m., Ski club vs. PEK. Officials: Abbott and Heath. 8 p.m.—Deacons vs. South hall. 9 p.m.—Sigma Chi vs. Rodeo club. Officials: Wilson and Rohnke.

Tuesday, February 3—8 p.m., Phi Sigma Kappa vs. Sooners. 9 p.m., Sigma Alpha Epsilon vs. PEK. Officials: Kann and Milne.

Wednesday, February 4—8 p.m., Alpha Tau Omega vs. Strips No. 2. 9 p.m., Blues vs. Foresters. Officials: Kirk and Clark.

Thursday, February 5—8 p.m., Jumbo vs. Ski club. 9 p.m., Jumbolaya vs. Oddball's Athletic club. Officials: Zygmund and McCrea.

After FORESTER'S Ball

It's the

BLACKFOOT TAVERN

"In the Midst of the Pines"

RELAXATION
RECREATION
REFRESHMENTS

Just a Short
Drive
Up the Blackfoot Valley

CLAUDE JONES, Prop.

USED CAR SALE

Thurs. - Fri. - Sat.

This Week

SPECIALS

All Models Cut Price

- 1950 Chevrolet 2-Door Deluxe - - - \$390 down
Radio, Heater, Seat Covers
- 1950 Ford 4-Door Deluxe - - - - - \$365 down
Seat Covers, Heater, New Tires
- 1949 Chevrolet 2-Door Special - - - \$325 down
Heater, Seat Covers, New Paint
- 1949 Ford 4-Door Deluxe - - - - - \$325 down
Radio, Heater, New Motor
- 1948 Chevrolet 4-Door Deluxe - - - \$265 down
Radio, Heater, Low Mileage
- 1946 Oldsmobile 2-Door Sedan - - - \$215 down
Radio, Heater, Many Extras

Many More to Choose from,
All at Special Prices

THIS ADVERTISEMENT IS WORTH 50 GALLONS OF GASOLINE
WITH ANY USED CAR PURCHASE

KRAABEL CHEV. CO.

YELLOW
CAB

Ph. 6644



No Waiting

Highlander
PREMIUM
BEER



Scientifically Brewed
To Be ENJOYED!