

University of Montana

ScholarWorks at University of Montana

Montana Kaimin, 1898-present

Associated Students of the University of
Montana (ASUM)

3-12-1953

The Montana Kaimin, March 12, 1953

Associated Students of Montana State University

Follow this and additional works at: <https://scholarworks.umt.edu/studentnewspaper>

Let us know how access to this document benefits you.

Recommended Citation

Associated Students of Montana State University, "The Montana Kaimin, March 12, 1953" (1953).

Montana Kaimin, 1898-present. 2907.

<https://scholarworks.umt.edu/studentnewspaper/2907>

This Newspaper is brought to you for free and open access by the Associated Students of the University of Montana (ASUM) at ScholarWorks at University of Montana. It has been accepted for inclusion in Montana Kaimin, 1898-present by an authorized administrator of ScholarWorks at University of Montana. For more information, please contact scholarworks@mso.umt.edu.

Classes Excused
for
Ground Breaking
at 11:45

Montana
State University,
Missoula, Montana



THE MONTANA

KAIMIN

Thursday,
March 12, 1953
Vol. 54 No. 79

Tomorrow...
Keim Says
Goodbye—
Jones Takes Over

Field House Construction Starts

Field House Indicative of MSU's Attempt to Enter Big Collegiate-League Play

BY BILL JONES

Hands that have felt the smoothness of a pitchfork handle, the roughness of oil machinery, and the coldness of a legislative pen will grasp a spade this morning. Those hands will push that spade into what was once an Indian camping ground, then turn over a mound of dirt. It will be a simple gesture. Yet in the nine months that follow, a building, large enough to contain six Craig halls, will take shape on that ancient Indian camping ground.

The ground-breaking ritual, led this morning by Gov. J. Hugo Aronson, will be the beginning of a new era. It will mark the initial step by the MSU administration to distinguish this school as a "comer" in the "big-school" league. A new music school, dormitory, and business administration school paved the way for that entrance. With the construction of a field house, MSU leaders have, in effect, served notice that days of contentedness with mediocrity are over. When the influx of war-babies and veterans pushes MSU's enrollment over the 6,000 mark, facilities will be ready. Those facilities, coupled

with the increased enrollment, should insure MSU a starting berth on the big collegiate-league roster.

This field house has been a dream in officials' minds ever since eastern and mid-western schools proved they can be made to pay for themselves. Yet no action was taken until the 1951 Montana legislature authorized the construction.

In the years that followed, Pres. Carl McFarland left no blueprint unturned in his search for the most applicable structure for MSU's purposes. When an intricate financial system was devised to subsidize the structure, the President presented the entire plan to the alumni, faculty, Missoula Chamber of Commerce, and student body. Each faction gave its sanction.

This morning's ceremony marks the start of the actual construction. At one time President McFarland said, "The field house can be used for basketball the winter of 1953-54." If his soothsaying is accurate, MSU, plus six other Skyline Eight schools, will have field houses in which to stage spectacles the coming winter season.

\$2 Million Annual Budget To Be Considered at Meet Of Education Board in April

MSU will operate for the next two years on a budget of approximately \$2 million per year. Pres. Carl McFarland, who returned Tuesday night from a finance session at Helena, said the budget will not be final until the Board of Education meets in late April to consider detailed recommendations of each institution of higher education.

At that board meeting, faculty and administration officials from the six units of the Greater University of Montana will recommend their needs to the board. The board in the past has usually accepted the recommendations adopted and the internal budget distributions with a minimum of debate.

The Montana legislative session that closed shop last week end ap-

propriated \$13,258,000 for the six units of the University. This figure is misleading, however, because it includes the many experiment and substations throughout the state under auspices of Montana State college as well as other non-teaching functions at the other institutions.

When Montana State University officials attend a board meeting in April, their recommendations must coincide with a budget that, according to President McFarland,

Breaks Ground...



GOV. HUGO ARONSON

Governor to Break Ground For Fifth New Structure In MSU Building Program

Another ground-breaking ceremony, the fifth in less than a year, will be enacted on the Montana State University campus this morning at 11:45. Classes in every University department will be cut short at 11:45 a.m. to permit students and faculty to attend the traditional rite. This time it's an \$800,000 Field House earmarked for construction.

Gov. J. Hugo Aronson, principal actor in this morning's ceremony, arrived in Missoula from the state capital in Helena early today. This morning's ground breaking will be the first such program to be conducted at MSU with Governor Aronson officiating. Ex-Gov. John Bonner split the sod for

MSU buildings occasionally during his tenure.

The University band, directed by J. Justin Gray, and the color guard will assemble in front of Main hall at 11:40 a.m. This ensemble will precede the Governor's party to the corner of Van Buren and Eddy.

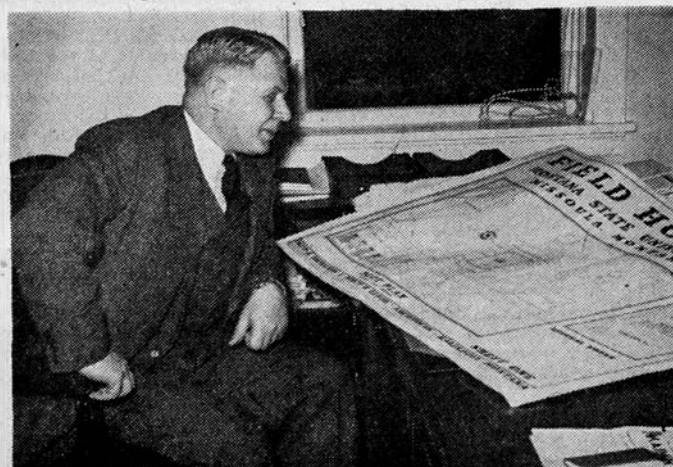
When the official party, plus the train of faculty and students, reaches the Field House site, the atmosphere will be split by a trumpet call to the colors, played by Sam Davis, Dillon. The ROTC color guard will present the American and Montana flags.

The University band will play "The Star Spangled Banner," and Sousa's "Washington Post March."

Pres. Carl McFarland will speak briefly, then introduce Montana's Republican governor, J. Hugo Aronson. Besides turning the traditional shovelful of dirt, the Governor will, according to President McFarland, deliver a ten-minute address.

Following the Governor's remarks, the MSU Band will play the "Montana Booster's March." The entire program, according to the President, will last less than thirty minutes.

Planning for Today...



MSU's progress-minded president, Dr. Carl McFarland, is shown studying architects' drawings of the Field House that will begin to become a reality this morning at ground-breaking ceremonies.

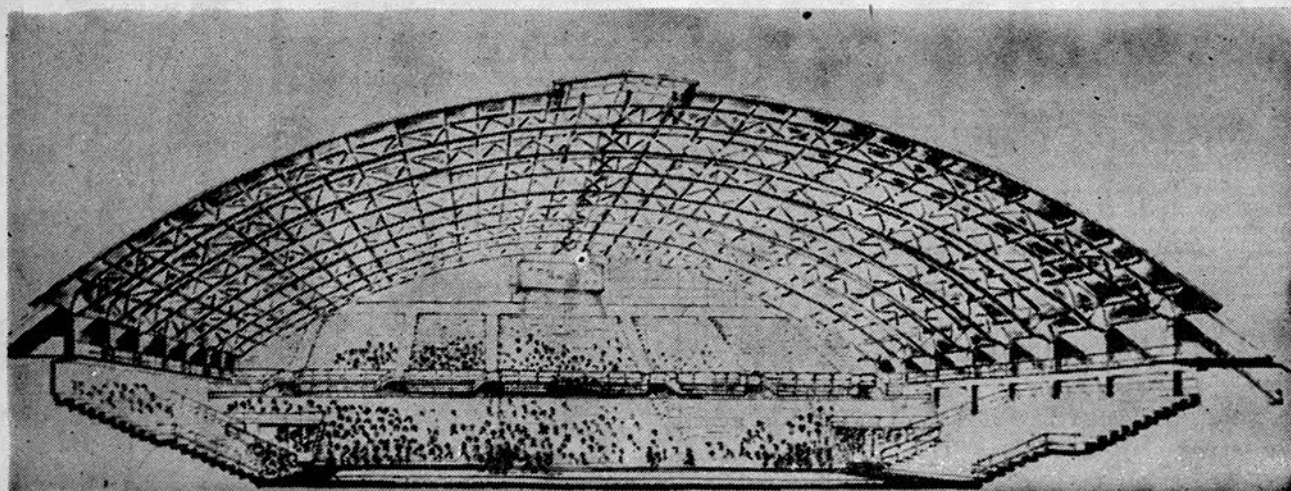
The president has been thinking of field house possibilities since 1948, when ex-president James McCain told him in Washington, D. C. of the MSU field house need.

"allows MSU 11 per cent less funds than the board originally recommended to the Legislature."

President McFarland said the Board of Education felt MSU warranted at least 11 per cent more monies than the \$2 million appropriated for each of the next two

years. "The budget is understandably disappointing to the faculty and administration," President McFarland said. "The net result is that the budget leaves us just where we are. This appropriation," he continued, "affords us no funds to meet new and increased costs."

Ground Breaking Today—Next Year, a Building...



The drawing above shows the south portion of the interior of the new Field House. Construction will start after ground-breaking ceremonies this morning at 11:45. A maximum of 6,000 will be able to view basketball games and 3,000 can be seated for concerts, shows, and similar productions. Included in this number are 1,600 theater-

type seats in the balcony.

The Field House issue, which drew much student interest this quarter, included a student vote of confidence, a Field House convo, and a special Kaimin Field House issue. MSU students voted 637-169 in favor of the Field House.

Skiers to Compete In Bozeman Meet

For the last meet of the season, MSU skiers will travel to Bozeman this week end to compete in an event sponsored by Montana State college.

Because of final examinations next week, only four of the six-man team will make the trip, said Coach Joe Saltsman. They are Cliff Wordal, Missoula; Ray Ruana, Bonner; Dick Solberg, Missoula, and Paul Maxwell, Butte.

The events will be held at the Bozeman ski hill and will consist of the usual four-way downhill, slalom, cross-country and jumping events, with possibly a giant slalom substituted for the longer downhill.

Winter Quarter in Retrospect

Cramming, Skiers' Curses Mark End of Quarter

BY BARBARA SHEFFELS

With a sigh of relief and one last crack at the books (We've got to cool those finals!) another winter quarter ends.

Disappointed skiers pack away boots, poles, and hickory slats, with a prayer that next year we'll have some snow.

Old bug notes, econ quizzes, and history papers are eagerly collected for last-minute cramming and then even more eagerly discarded.

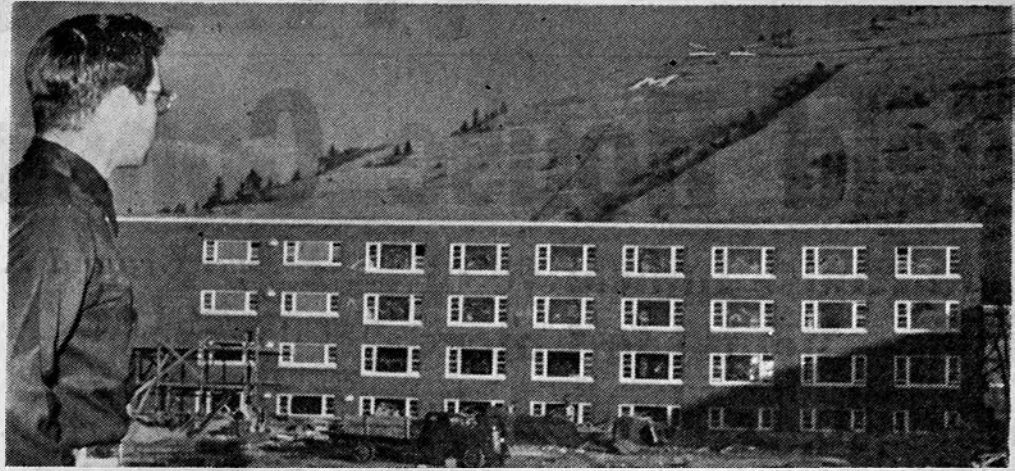
Dance programs, toothpicks, and paper napkins are pasted in scrap-books as the sentimentalists remember the brighter side of winter quarter . . .

Because in spite of the many long hours of studying (or being quiet while your roommates were) winter quarter did have its

brighter, more eventful side . . .

The Grizzly hoopsters captured the State Intercollegiate Basketball crown for 1953 and finished the Skyline conference in fourth place, by defeating Utah State in the last game of the season, 76-61. Jim Murray, Grizzly linebacker and tackle, was awarded the "most valuable player" trophy for the

We've Watched MSU Grow . . .



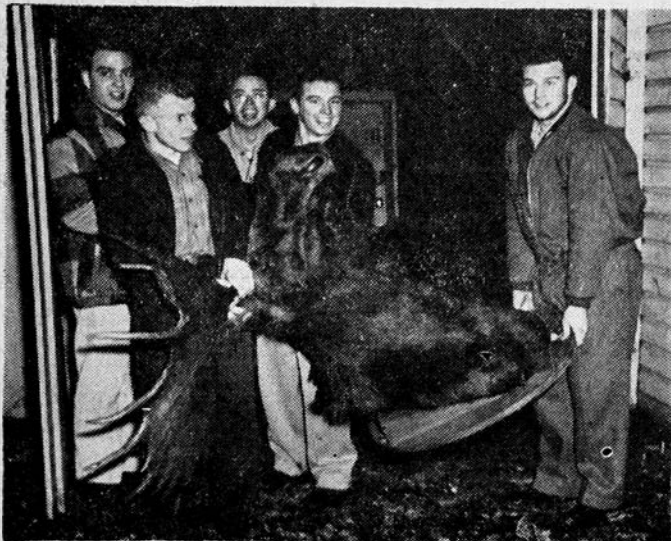
During the past quarter, the students of MSU have watched their University grow as four new structures have given evidence of MSU's building boom. This men's dorm was dedicated Feb. 17 during the festivities for MSU's 60th Charter day. The new dorm was named Craig hall after MSU's first president.

Sibley Award Committee . . .



A committee of Pres. Carl McFarland, Dan Lambros, and Bev Henne, will present the Sibley award spring quarter to the student doing the most "to forward the traditions and aspirations of the University." The committee received nominations during winter quarter.

The Missing Moose . . .



This group of foresters recovered the pride and joy of the Forestry school from the garage of a Law school student. This incident is just one phase of the Forester-Lawyer feud that raged during the quarter. Both schools staged successful dances during the quarter, however.

1952 grid season during the half-time of the game.

A six-man Grizzly ski team traveled to Winter Park, Colo., the Northwestern Intercollegiate meet at Kimberly, B. C., and the Denver Invitational.

MSU students voted "Yes!" to a new Field House (637-169) and "No!" to a proposition that the Field House be combined with a new Student Union. Governor Aronson digs the first shovelful of dirt for the foundation of the Field House in a ceremony today.

The Jubileers toured ten Montana cities on behalf of the University—and introduced Gib Leibinger's "I'm in Love With an Angel" as part of their program.

John Imsande, Theta Chi, was elected president of Interfraternity council. Jack Belland, Phi Sigma Kappa, was chosen vice-president, and Lionel Bogut, Alpha Tau Omega, secretary-treasurer.

Enrollment went down only 53

students from fall to winter quarter—the usual decrease is 150. Winter quarter registration totaled 2,062.

The Night Club dance Jan. 24 featured "Panorama in Song," a floor show tracing musical styles from "Grandpa's time to 1953" put on by the University music school.

John Scott, a member of the Life and Time editorial staff, lectured on the European situation, Russia, and symbolistic journalism in Main hall and the journalism auditorium.

"Art movies" were introduced by the Campus theater, with classical music played during intermission.

In contrast, the Snake River Boys caused a major dispute between the "cultured" and "Western" factions at MSU, playing western-style music to a standing-room-only crowd in the Student Union.

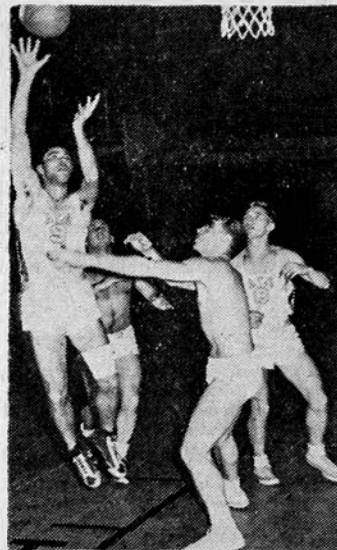
Three thousand fir trees decorated the men's gym for the annual Forester's ball Jan. 31. Orangeade and coke flowed like water, plus other various and sundry refreshments.

The "Fish Bowl" night club dances opened in the Copper room Jan. 30, sponsored by the Bear Paws.

"Death of a Salesman," starring Herb Carson, speech instructor, as Willie Loman opened Feb. 3 in Simpkins Little theater for a successful five-day run.

Stan Kenton and his "Artistry in Rhythm" ensemble presented a concert and dance in the Student Union Feb. 24, complete with a nationwide hookup over NBC (please see page four)

I-M Action . . .



Intramural basketball went through an active quarter with 26 teams competing. Championship finals will mark the opening week of spring quarter.

Nominee . . .



William J. Jameson, a graduate of MSU's law school and a recipient of an MSU honorary doctor of law degree, was nominated during the past quarter for president of the American Bar association.



WRESTLING AGAIN
At the AMERICAN LEGION
Thursday Night, March 12, 8:30 p.m.

Main Event—
FOREMOST JAPANESE JUDO ARTISTS
—Also—
TAG TEAM WRESTLING MATCH

For ---
Fine Cleaning
For ---
Fast Service

Send Your
Cleaning
to

**CITY
CLEANERS**

610 South Higgins

**Safe
Buy
Used
Cars**

**GUARANTEED
EASY
TERMS**

**Safe
Buy
Used
Cars**

1951 Mercury 6 Passenger
Coupe Overdrive Radio
& Heater
1949 Nash 600 4 Door Over-
drive Radio & Heater
1948 Olds 2 Door Radio &
Heater
1947 Mercury R & H
1939 Mercury 4 Door

BAKKE MOTOR CO.

345 West Front

Lincoln

MERCURY

Tracksters Point for BYU Debut

With spring officially only a week away, Montana athletes in track and field are beginning preparation for their April 18 debut with Brigham Young university here in Missoula. Track and field candidates have answered an informal call by Coach Larry Adams, acting athletic director, and are in a period of preliminary conditioning. With spring-like weather the last week the trackmen will get an opportunity to get outside next week.

"Freshmen will be eligible for varsity competition in track, golf and tennis if they have completed two quarters of satisfactory scholastic work prior to spring quarter," Adams said.

Last year the Grizzly track team scored 34 points in the Skyline conference meet and finished third behind Colorado A & M and Utah university.

The Grizzlies opened last year's season with a 69-62 win over Brigham Young university. The next meet they scored 109 points in a meet on Dornblaser field with USC, Western Montana, Eastern Montana, and Rocky Mountain college. Next the Grizzlies made easy prey of the Utah Aggies 76-55 in dual meet at Logan, Utah.

In one of the most exciting finishes seen on Dornblaser field in many years the Redskins of Utah university upset the Grizzlies 66 5/6 to 64 1/6 by winning the last event of the meet, the mile relay, by a close margin. This closed out the regular 1952 season for the Grizzlies and then they went on to take second place in the Western division meet behind Utah university and then a third place in the Skyline conference meet.

Fourteen veterans return this year to Coach Adams' team. They are Bob Beach, Missoula, shot put-

Air Science Lead Cut to 5 Games; Bus Ad Moves Up

Business Administration moved to within five games of league-leading Air Science Tuesday night in faculty bowling. The Business quad downed Liberal Arts three games while military lost one and won two over Physical Education.

In other games seventh place Journalism continued their winning streak started last week after two-month slump, by defeating fourth-place Administration two out of three. Third-place Botany-Chemistry won two out of three from last-place Humanities.

Journalism's advance to a sixth place tie with Liberal Arts was the only change in league standings from last week.

Business Administration repeated their all-around performance of last week by rolling a high team series of 2490 and a high team game of 866. Ted Smith led B.A. to victory and topped individual scoring honors with a 600 series and a 237 single game. These high scores nearly broke two individual season records. His 600 series was second to Din Alcorn's 606 earlier in the season. Alcorn bowls for Journalism. Smith's 237 single game tied the record held by Major Zeuty.

League Standings

	W	L
Air Science	42	21
Business Administration	37	26
Botany-Chemistry	35	28
Administration	30	33
Physical Education	30	33
Journalism	27	36
Liberal Arts	27	36
Humanities	24	39

ter; Don Brant, Glendive, sprinter; Leon Conner, Victor, team captain, 440 runner and anchor on the mile relay team; Jack Coppedge, Missoula, high-jumper and hurdler; Doug Delaney, pole-vaulter; Don Enebo, Stevensville, 440 man; George Tarrant, Butte, pole vault. Billy Gue, Great Falls, sprinter; Jim Haslip, Helena, 220, 440, and 880 relay; Bob Hudson, Alberton, broad-jumper; Rich Johnson, Helena, broad-jumper; Jack Luckman, Glasgow, broad-jumper, high-jumper, shot, and discus; Hal Maus, Hamilton, discus; Marvin Reynolds, Missoula, 440; and Bill Rife, Miles City, mile and 2-mile.

Gone from last year's squad are John Badgley, Mike Fleming, Joe Luckman, Bob Ripke, and Jack Rothwell, graduates. Bob Ghiglieri, two-miler, is in the service.

Freshmen and non-veterans who may add strength to the team are Don Halverson, Helena; Don Bissell, Belt; Walt Lonner, Butte; Floyd Smith, Fort Benton; Jerry Koon and Rudy Weishaar, Missoula; Paul Weskamp, Ronan; Dee Stringham, Monrovia, Calif.; Ronnie Van Hee, Lewistown; and Ray Dunn, Missoula.

The Grizzly track schedule: April 18—Brigham Young at Missoula. May 2—Utah State at Missoula. May 9—Utah university at Salt Lake. May 16—Western Division at Provo, Utah. May 22-23—Skyline conference meet at Salt Lake. May 30—Montana State at Bozeman. June 19-20—National Intercollegiate meet at Lincoln, Neb.

Lawyers Win Bowling Title By 9 Games

The student intramural league bowling season officially ended Saturday with Law school taking the title by nine games.

Saturday the lawyers triumphed over SAE two out of three games. The lawyers took scoring honors with a high team series of 2422 pins. The individual scoring honors, however, went to Ralph Rundle, Theta Chi, with a high game of 225 and an individual series of 552.

Sigma Chi came within a half-game of second place when they swept their series with Phi Delta Theta. By trouncing Sigma Phi Epsilon, Sigma Nu not only gained a fourth-place tie with SAE but aided Phi Sigma Kappa in keeping out of the cellar.

League Standings

	W	L
Law	37	8
Phi Delta Theta	28	17
Sigma Chi	27 1/2	17 1/2
Sigma Alpha Epsilon	27	18
Sigma Nu	27	18
Theta Chi	17 1/2	27 1/2
Phi Sigma Kappa	15	30
Sigma Phi Epsilon	14	31

I-M Hoop Sked

Saturday, March 14—9 a.m., PEK vs. ATO; 10 a.m., Sooners vs. Sigma Chi; 11 a.m., PSK vs. South hall. Referees, 9 a.m., Abbott and Milne; 10 a.m., Abbott and Kann; 11 a.m., Milne and Kann. 1 p.m., Sigma Nu vs. Oddballs; 2 p.m., SPE vs. PDT; 3 p.m., S.A. Scrounges vs. Mel's Rejects. Referees, 1 p.m., Zygmund and Dorsett; 2 p.m., Zygmund and Shreeve; 3 p.m., Shreeve and Dorsett.

Phi Delts Score Easy Win; Blues, Jumbo Move Into Race

Phi Delta Theta easily survived an attempt on their B-league leadership Tuesday night when they romped over Jumbolaya, 77-39, for their ninth straight win.

PDT	fg	ft	tp	Jumbolaya	fg	ft	tp
Skates	5	0	10	Campbell	4	7	15
Malmstad	7	3	17	Boland	2	1	5
Gue	4	0	3	Palmer	3	0	6
Hines	2	1	5	Milne	1	4	6
Munger	4	4	12	Bofto	1	3	5
Currell	3	1	7	Rood	0	2	2
Boifeuillet	8	2	18				

Totals 33 11 77 Totals 11 17 39

The Blues eased by Strips No. 2, 51-48, for their sixth win, and moved into fourth place ahead of the Strips in League A. It was the Strips' fifth loss of the year against eight wins.

Blues	fg	ft	tp	Strips	fg	ft	tp
LeBlanc	5	2	12	Stern	9	7	25
Anderson	0	5	6	Fowler	2	5	9
Ryan	4	3	11	Estey	2	2	6
Boileau	3	4	10	Marks	2	2	6
Heath	4	5	13	Knutson	1	0	2

Totals 16 19 51 Totals 16 18 48

Jumbo hall easily downed the Foresters, 59-36, in an A-loop contest.

Jumbo	fg	ft	tp	Foresters	fg	ft	tp
Harger	5	3	13	Lantz	2	3	7
Elison	5	1	11	Almen	3	0	6
Wolf	3	0	6	Fichtel	2	2	6
Roots	4	2	10	Johnson	3	3	9
Zygmund	6	5	17	McNutt	1	2	4
Underwood	1	0	2	Smith	2	0	4

Totals 24 11 59 Totals 13 10 36

Ski club took an easy win over the Deacons, 50-25.



Everything Musical

ORVIS
MUSIC SHOP

Ski	fg	ft	tp	Dcacons	fg	ft	tp
Burton	0	1	1	Smith	3	2	8
Brott	4	4	12	Potter	3	0	6
Laird	3	1	7	Hoff	1	0	2
Imer	2	2	6	Malcolm	1	0	2
Pinsoneault	4	3	11	DeLuca	3	1	7
Jankovich	5	1	11				
Deuchler	1	0	2				

Totals 19 12 50 Totals 11 3 25

Classified Ads . . .

LOST: Will individual that borrowed my statistics from coat rack near northwest entrance South hall please return to said coat rack, George McCammon.

FOR SALE: New Bel Air sewing machine. One-third off new price. Lowell Burgett, 204 S. Ave. E. 80c

FOR SALE: Underwood portable. \$50 L. H. Vierhaus, 9-1235, from 12 to 1 p.m.

FOR RENT: Single and double rooms. 340 Daly. Call 2498. 12

SPECIALIZED SERVICE

- CARBURETORS
- SPEEDOMETERS
- MAGNETOS
- STARTERS
- GENERATORS
- IGNITIONS
- EXCHANGE UNITS

AUTO ELECTRIC SERVICE

218 East Main
Phone 4716



SPEND YOUR
SPRING VACATION

in a

CAPPS
Tweed or Flannel
Convertible
SPORT SUIT

2 Button Patch Pockets

\$50 up

Yandt's
MEN'S WEAR



EXTRA!

CLASSIFIED ADS

Give Extra Service

Fast—

Mrs. Thomas Fletcher, 17 Ravalli, Missoula, sold a tuxedo through a Kaimin Class Ad in ONE HOUR.

Thrifty—

Reach 2,100 students, plus faculty and maintenance people, for only 20 cents a line (5 words). Lower rates for ads running more than once.

Phone or Bring Your Ad in Today!

THE MONTANA KAIMIN

JOURNALISM BUILDING

'Toast of the Town!'

Delicious! Nutritious!



BAKED BY
BON TON

Quarter in Retrospect . . .

(continued from page two)

broadcasting his "Concert in Miniature."

Bev Henne, Butte, and Norman Anderson, Chinook, were elected senior and junior delegates, respectively, to Central board.

Bill Stong, Billings, Sigma Chi, and Berta Huebl, Glendive, New hall, were chosen king and queen of the Mardi Gras at the annual celebration Feb. 6.

Marie Austin, Helena, was crowned "Sweetheart of Sigma Chi" at the ninth annual Sweetheart ball Feb. 21.

"Craig hall," new men's dormitory, was dedicated in honor of the University's first president, Oscar Craig.

Scabbard and Blade pledges were tapped at the 14th annual Military ball Feb. 21 in the Mayfair room of the Florence hotel.

Alpha Phi Omega sponsored an Anatomy Anonymous contest with pictures of the most tantalizing torsos from each women's living group (minus the head) posted in the Student Union. Proceeds went to the Red Cross.

Bill Jones, Miles City, was

chosen next editor of the Kaimin. Winnie Dinn, Butte, is the new business manager.

Marilyn Foster was elected president of the Associated Women Students. Nan Hubbard was chosen vice-president, Davis Watson, secretary, and Janet McKenzie, treasurer.

The Miss Montana contest and pageant was dropped from the agenda for this year when AWS voted 15 to 1 not to sign the franchise.

Joann Hattle, Missoula, Kappa Kappa Gamma, was chosen "Miss Photogenic" at the Royaleer's dance March 6.

Picture Mural To Be Hung In SU Store

A mural depicting various phases of campus life will be hung on the east wall of the Student Union store between quarters, according to Jack Cuthbert, manager.

The 9 by 6 foot mural is made up of photographs blended together and is being made by Catlin's studio. Mr. Cuthbert explained. The mural is composed of 11 scenes including photographs of football, the opera "La Boheme," the MSU band, the Aber barbeque, skiing, smoke jumpers, Central board, and the Homecoming queen crowning.

Graduate Studies Mink Populations

Robert R. Lechleitner, graduate assistant in zoology, is conducting a population study of mink. The purpose of his study is to find a way to distinguish the young from the old animals in the mink population.

He is analyzing approximately 350 carcasses of ranch mink and 200 carcasses of wild mink for differences in such things as body weights, body lengths, and femur and skull characters.

Choral Groups To Stage Benefit Sunday

The MSU choir, Jubileers, women's sextet, and men's quartet will stage a Benefit Choral production in the Student Union auditorium, Sunday, March 15, at 4 p.m. The proceeds from the show will help finance the a cappella choir's trip to Bellingham, Wash., for the Northwest Music Educator's conference, March 19-22.

The musical groups, directed by Lloyd Oakland, will sing folk songs, light opera, popular, and original songs. The numbers will be staged in settings designed to fit the type of music being sung. These settings include a revolving stage for the quartet and sextet, and special lighting effects, planned by production manager David Weiss.

The Jubileers will sing three of Gib Leibinger's original compositions: "Gotta Get Me a Man," "Hey! Hey! You're Playin' with Fire," and "I'm in Love with an Angel." Leibinger is the accompanist and arranger for the show.

The choir has received \$600 from the MSU student treasury, and \$160 from their sale of tickets to the Mendelssohn Club's concert for their trip, which will cost approxi-

Today's Meetings—

Central board, 4 p.m., Eloise Knowles room.

Student Christian association, 4 p.m., Central Board room.

Red Cross, 5 p.m., Central Board room.

Christian Science organization, 7 p.m., Bitterroot room.

Intervarsity Christian fellowship, 7 p.m., Eloise Knowles room.

Alpha Kappa Psi, 7 p.m., Copper room.

Phi Chi Theta, 4 p.m., BE 301.

mately \$1,300, according to Professor Oakland. They need at least \$600 more to pay for transportation and hotel expenses.

Tickets for Sunday's show may be purchased from any member of the choir, Jubileers, quartet, or sextet. Student prices are 50 cents, adults, \$1.

Sigma Delta Chi Smoker Slated

Members of Sigma Delta Chi professional journalism fraternity will have a smoker in the Eloise Knowles room, Friday at 7:30 p.m. to pledge new members, according to Pres. Dave Pugh.

To be pledged are Bob Newlin, Lewistown; Ray Moholt, Glendive; Arthur Mathison, Deer Lodge; and Jack Seigle, Detroit.

Lenten Meditation Scheduled by SCA

Lee Ann Stewart, Christian faith chairman of the Student Christian association, announced Wednesday that lenten meditations will be sponsored every Wednesday at 12:45 p.m. through the lenten season.

She said that the meditations will be conducted in the Make-up room of the Student Union. During Easter week, the meditations will be conducted every noon, she added.

The Montana KAIMIN

Established 1898

The name Kaimin (pronounced Kimeen) is derived from the original Selah Indian word and means "something written or a message."

Published every Tuesday, Wednesday, Thursday, and Friday of the college year by the Associated Students of Montana State University. Represented for national advertising by National Advertising Service, New York, Chicago, Boston, Los Angeles, San Francisco. Entered as second-class matter at Missoula, Montana, under Act of Congress, March 3, 1879. Subscription rate \$5.00 per year.

Member, Montana State Press Association
Member, Rocky Mountain Intercollegiate Press Association

Editor, Lew Keim; Business Manager, Joy East; Associate Editors, Bill Jones, Betty Smith, Carla Wetzstein, and Ray Moholt; Sports Editor, Jack Zygmund; Photographer, Ted Hewett; Circulation Manager, Pat Eyer; and Faculty Adviser, Prof. E. B. Dugan.

Printed by the University Press

65

The PENNANT

125 West Spruce

Missoula's
Most Modern
Billiard Parlor
Lunch Counter

TAKE CARE OF YOUR CAR and It Will Take Care of YOU

See the Auto "Physicians" at

TUCKER MOTOR CO.

1953

Chryslers - Plymouths on Display

SOUTH OF COURTHOUSE

Only Time will Tell...



Only time will tell about a new restaurant. And only time will tell about a cigarette! Take your time...

Test
CAMELS
for 30 days
for **MILDNESS**
and **FLAVOR!**

THERE MUST BE A REASON WHY Camel is America's most popular cigarette—leading all other brands by billions! Camels have the two things smokers want most—rich, full flavor and cool, cool mildness...pack after pack! Try Camels for 30 days and see how mild, how flavorful, how thoroughly enjoyable they are as your steady smoke!



More People Smoke Camels THAN ANY OTHER CIGARETTE!