

University of Montana

ScholarWorks at University of Montana

Montana Kaimin, 1898-present

Associated Students of the University of
Montana (ASUM)

10-21-1953

The Montana Kaimin, October 21, 1953

Associated Students of Montana State University

Follow this and additional works at: <https://scholarworks.umt.edu/studentnewspaper>

Let us know how access to this document benefits you.

Recommended Citation

Associated Students of Montana State University, "The Montana Kaimin, October 21, 1953" (1953).

Montana Kaimin, 1898-present. 2962.

<https://scholarworks.umt.edu/studentnewspaper/2962>

This Newspaper is brought to you for free and open access by the Associated Students of the University of Montana (ASUM) at ScholarWorks at University of Montana. It has been accepted for inclusion in Montana Kaimin, 1898-present by an authorized administrator of ScholarWorks at University of Montana. For more information, please contact scholarworks@mso.umt.edu.



the Montana Kaimin

Montana State University, Missoula, Montana

Volume LV. Z400

Wednesday, Oct. 21, 1953

No 12

New Campus Walks Save Grass, Students' Tempers

"Our policy in putting in sidewalks is to lay them wherever students make paths leading from one building to another," said T. G. Swearingen, maintenance engineer.

Former students have probably noticed all of the new sidewalks on campus which have practically eliminated the necessity of taking "short-cuts" in order to make class on time.

There are new sidewalks around the Music, Art, and Business-Education buildings. New sidewalks run from the Chem-Pharm building to the Oval, and past the forestry greenhouse to South hall. Besides the new walks, much curbing has been put in and repaired. New walks will be put around the Field House, and the Liberal Arts building when these are completed.

Many new lawns were planted around the campus also. Frustrated drivers have probably more than once missed the street entering the Oval from Van Buren street. Students no longer need worry about being run over by a car while walking over this intersection, because now grass has taken the place of burning rubber.

There are now new lawns around

SCA Sponsored Discussion Groups Begin Wednesday

Four study and discussion groups, led by campus religious leaders, will begin this week, according to the Student Christian association.

The programs include: "The History of Christian Thought," conducted by Mrs. Ruth Berry in her South hall apartment, 9 p.m. Wednesday; "The Unfolding Drama of the Bible," by the Rev. Bruce Wood in the Student Union Bitterroot room, 9 p.m. Wednesday; "A Worship Workshop," by the Rev. Guy Barnes in the Eloise Knowles room, 9 p.m. Thursday; and "Love and Marriage," by the Rev. Clara Wood in the Bitterroot room, 9 p.m. Thursday.

SCA has scheduled a general meeting every second week to provide opportunity for group work and to give continuity to the program by sharing different study group ideas.

Students and faculty have been invited to attend by SCA.

Imer, Heath Rank High in Nation

Dick Imer, Grizzly halfback, stepped up from third to second in the nation in rushing this week. J. C. Caroline of Illinois is first with 668 yards in 80 trips. Imer has packed the ball 70 times for 539 yards. Dick Heath and Imer rank ninth and 11th nationally in total offense with 542 and 539 yards. Montana is the only school in the nation with two men among the top 20 in total offense.

Today's Weather—

Partly cloudy Wednesday. Clear Wednesday night. High Wednesday 50-55.

Yesterday in Missoula:
Maximum 47 Minimum 24

Half of Frosh Students Select Ten Candidates

Student Committee Interviews Seven For SU President

Mary Helen Pemberton, Broadus; Gertrude Stene, Big Timber; and Tom VanMeter, Ogden, Utah, were selected to run for Student Union president by the Student Union Executive committee yesterday.

Students will select a president from one of these three candidates in a general election tomorrow. Voting will be with freshman elections in the Student Union.

The Executive committee interviewed seven candidates and selected the trio for tomorrow's ballot on a basis of leadership experience in college activities, general scholastic ability, and interest in Student Union activities.

Members of the Student Union Executive committee are Beverly Praetz, Chinook; Lou Marilyn Vierhus, Stratford, Calif.; Bob Lawrence, Missoula; Cyrille Van Duser; Asst. Prof. Vincent Wilson; Dean of Students Herbert Wunderlich; and Prof. Ed Dugan. ASMSU Pres. Norm Anderson helped with the interviews.

Johnson Explains Mapping Methods

Another in a series of talks will be given before Sigma Gamma Epsilon, professional geology fraternity, members today at noon at Main hall basement, according to Tom Pullen, president.

Methods of mapping used by the United States Geological Survey in northern Montana will be explained by Durwood Johnson, MSU student, who worked with the USGS under V. K. Koskinen and W. A. Rohrer, MSU graduates.

Last week's speaker was George Sweeney '50, who discussed his work with the U. S. Corps of Engineers in preparing a dam site near The Dalles, Ore.

Sponsor Corps Plans Interviews

Any freshman girl living on the campus or in Missoula who is interested in becoming a member of the ROTC Sponsor Corps should pick up her application at the Corbin or North hall offices.

These applications must be turned in by Friday noon at these same offices.

Interviews will begin Saturday at 9 a.m. in the ROTC building in room 3.

Interviews will be conducted by five Sponsor Corps officers and eight men representing the freshman, sophomore, junior, and senior air and ground ROTC classes.

MSU POLIO VICTIM BEGINS PHYSICAL THERAPY TREATMENT

Polio victim Warren Hodous, Billings, began physical therapy Monday in the Hubbard tank at St. Patrick's hospital.

The tank is a form of water therapy in which the patient is completely submerged in constantly churning, warm water. Hodous' legs and right arm are paralyzed but he now can move his toes. He is out of isolation and can have visitors.

Today's Meetings—

Off Campus Women, 12, Eloise Knowles room.

Mortar board, 12, Bitterroot room.

Central board, 4 p.m., Eloise Knowles room.

Square dancing, 7 p.m., Gold room.

Kappa Psi, 7:30 p.m., Eloise Knowles room.

New Student Union committee, 9 p.m., Activities room.

Freshmen, with a 50 per cent vote, selected 10 candidates for Thursday's final election in yesterday's primary.

Bear Paw Jim Abbott, Kalispell, reported the voting results late yesterday afternoon. Two candidates with the most votes will compete for each office in tomorrow's election.

Votes were tabulated as follows:

President—Ray Howard, Helena, 180; John Fowler, Missoula, 59; Fred Brautigan, Billings, 41; Terry Nobles, Billings, 14; and Don Clark, Sidney, 7.

Vice-president—Connie Jessen, Hamilton, 95; Cece Clark, Great Falls, 75; Dan Freund, Laurel, 64; Billea Ray Carver, Fort Benton, 38; Dorothy Stahl, Billings, 30.

Secretary—Shirley Seibert, Wolf

Point, 177, and Janet Fowler, Lewistown, 118.

Treasurer—Norma Beatty, Helena, 206, and Despina Loubis, Missoula, 84.

Central board delegate—George Lambros, Missoula, 120; Conrad Orr, Missoula, 70; Maury Colberg, Billings (write-in), 42; Bill Cogswell, Missoula, 28; Gerald Rutan, Great Falls, 18; and Diane Baker, Libby, 17.

Students Get Scholarships

Sixteen scholarships awarded to outstanding Montana high school graduates were announced Thursday afternoon by the board of trustees of the Endowment Foundation of MSU after its annual meeting on campus.

The scholarship winners are James Beadle, Donna Bailey and Shirley Brown, Red Lodge; William Boehler, Opheim; Arlys Engdahl, Jordan; Ellen Haugen, Chinook; Grace Howe, Plevna; Sharon Johnson, Anaconda; Mrs. Jeanne Richardson Moe and Sheila McDorney, Missoula; Carol Jean Peterson, Lewistown; Nita Alexandra Robbin, Bigfork; Patty Schaeffer, Scooby; Ole Vik, Reserve; Emily Louise Wherley, Florence-Carlton; Donald Andrew Trunk, Big Sandy.

Last summer, the scholarships were authorized by the executive committee of the board after recommendation by a faculty scholarship committee. All recipients are presently enrolled at the University.

A membership meeting of the Foundation was held at 9 a.m. Friday to elect six trustees. The new board conducted a brief organizational meeting afterward.

Present at the trustee meeting were Sid G. Stewart, Anaconda, president; Guy E. Sheridan, Missoula, secretary-treasurer; J. E. Corette Jr., Butte; A. T. Hibbard, Helena; T. E. Hodges, Great Falls; D. Gordon Rognlien, Kalispell; Dr. Carl McFarland, MSU president, Missoula; Claget T. Sanders, Billings; Marcus Bourke, Lewistown.

Marines Schedule Interviews Today

A Marine Corps officer procurement team will be at MSU on Wednesday and Thursday of this week, according to Dean Wunderlich.

Two programs are currently available to undergraduates. Freshmen, sophomores and juniors may qualify for the platoon leaders class and seniors may qualify for the officer candidate course.

Requirements for enrolling in either program include a C average, passage of a mental test, and proof that a 1-D deferment has not been received from an ROTC or reserve unit. Seniors interested in the officer candidate course must graduate prior to March, 1954.

Pershing Rifles Gives Promotions

The Pershing Rifles officers' staff awarded senior non-commissioned ranks to the following members at its regular meeting last Wednesday.

James H. Walker, first sergeant; Clayton R. Gerstenberger, sergeant first class; Thomas E. Nelson, Ronald P. Richards, and James R. Oliver, sergeants.

The following were awarded promotions to the grade of corporal: Walter Sundelius, Forest Leibe, Donald E. Nicholson, and Rex Chamberlain.

Sergeant Nelson was appointed social sergeant, and Sergeant Oliver supply sergeant.

LITTLE MAN ON CAMPUS BY DICK BIBLER



"I got an 'F' in his lecture course but at the same time he gave me an 'A' on my knitting."

How Would You Like to Study . . .

Bug Science in Bed

There used to be a crazy, mixed-up kid in Jumbo hall whose speed was a campus legend. He wasn't as fast as "Shane"; in fact, he didn't deal with triggers. His reputation came from his ability to wake up just as the old Main hall bell tolled the eighth time, and still make it to an eight o'clock.

But occasionally he never yawned until 8:09 a.m. He was fast, but not that fast. On those days he'd squelch his yawn and decide to catch up on his sleep in bed instead of the classroom. Now if he'd lived in Jumbo hall's counterpart at the University of Houston he could still have made it to class. All that he'd need was a quick flick of the TV dial.

For Once Texas Was Actually First . . .

Some 243 television channels have been set aside for educational TV in the United States. Ten universities have applied for the channel grants and 27 are in the process of filing. The University of Houston was the first to actually begin telecasting. Seven courses, including biology, history, economics, and humanities, are available to tele-collegians at Houston this fall.

When the federal communication commission parceled out TV channels in Montana, they allotted three to Missoula. One of these, number 11, was specified for educational, non-commercial, television. Logically the University would be the physical plant most likely to speak for the educational channel. So far it hasn't. Here are some reasons why it hasn't, why it probably won't for a decade or more, but why it probably will ultimately.

The Dollars Dance While the Screen Flicks . . .

Cost is the most important factor when discussing TV. Missoula's first station, KGVO-TV, will probably be in operation by July 1, 1954 according to TV program director Dick Coon. Coon was formerly an English graduate-assistant at MSU. He worked last year with television at Roanoke, Va. It will cost \$250,000 to start KGVO-TV, estimates Coon.

Once KGVO-TV is in operation the expenses run between \$10,000 and \$20,000 each month. The station will be operated as a commercial business, with advertising revenue coming from Missoula, the valley cities, Polson, and possibly Kalispell.

To a person acquainted with the University's contemporary financial condition, it doesn't seem probable that the administration will kick through with the \$250,000 requisite to buying the original TV equipment. And since the University doesn't seem too anxious to start KMSU-TV, that brings up the possibility of an additional allotment from the legislature. To those acquainted with the legislature's attitude toward the University in the recent past it's obvious that the Eisenhower "austerity regime" philosophy has crept westward.

It's Just as Sure as Death, Taxes, and ROTC . . .

Be that as it may, the prospects for a University operated educational TV station are not all disheartening. Although it may take \$250,000 to establish a station the operating costs would not equal that of a commercial station because of the free talent available and the comparatively few hours of production.

If some 37 colleges are now negotiating for TV stations, it stands to reason that the Montana legislature and its subordinate board of education will either be exposed to or hear of educational TV. And if the legislature and MSU's president continue to believe in progress, as symbolized by five new buildings, it likewise follows that Missoula's channel number 11 will someday be utilized by the University.—B.J.

Social Standards and Customs Same In Islands as in U.S., Says Francis

BY JOAN KILBURN

Thelma Francis, Virgin Islands, is Kermit Severson's new assistant in the MSU Counseling center. This is her first time in the United States.

In three years and two summers Thelma received her B.A. degree from the Polytechnic institute, Puerto Rico, in psychology. After graduation she went back to St. Thomas, V.I., where her home is, and worked as child welfare worker for a year. It had always been her dream to work

in the United States in some sort of welfare work. Her chance came this year when the assistantship job in the Counseling center was open.

Social standards and customs are much the same in the Virgin Islands as here, said Thelma. Life in the Islands is not much different except that there the climate is tropical.

"In Puerto Rico," said Thelma, "we had to be chaperoned when we went downtown or out at night."

This custom, however, is breaking down, she hinted. Many of the girls do not follow the custom. Thelma's sister also went to college in Puerto Rico and when she was there the boys and girls had to use separate stairs in school.

There is a much higher standard of living in the United States, she said. The average home in the Islands does not have the modern facilities of the American home. The Islands do not raise enough food for their population. They import mostly from the U.S.

Clothes are imported largely from the U. S. The Islands get perfume from France and powder and cologne from England, and silver from Denmark. Most of the magazine are American ones like "Life," "Time," "Seventeen," and "Charm."

The main industry in the Islands is making and exporting rum. The tourist trade is also a vital part of the income. The natives make straw bags, purses, and slippers to sell to the tourists. They make earrings and pins from sea shells and coconut shells, and bracelets from silver.

"There are two unions in the

Virgin Islands, one for taxi drivers and one for plain labor. The unions are strong, but as yet have never gone on strike," said Thelma. The minimum wage is 40 cents an hour.

Thelma thinks she is going to like the West. "It is not so crowded here as in the east, and there is not so much noise and confusion," she said.



For Fast Service

It's
**CITY
CLEANERS**

In Plant by Noon

Ready at 4

or Delivered at 6

610-12 SOUTH HIGGINS

The Montana KAIMIN

Established 1898

The name Kaimin (pronounced Kimeen) is derived from the original Selish Indian word and means "something written or a 'message'."

Published every Tuesday, Wednesday, Thursday, and Friday of the college year by the Associated Students of Montana State University. Represented for national advertising by National Advertising Service, New York, Chicago, Boston, Los Angeles, San Francisco. Entered as second-class matter at Missoula, Montana, under Act of Congress, March 3, 1879. Subscription rate \$3.00 per year.

Printed by the University Press

Member,
Montana State Press Association
Member, Rocky Mountain
Intercollegiate Press Association

Editor, Bill Jones; Business Manager, Winnie Dinn; Associate Editors, Joan Brooks, Shirley DeForth, Carla Hewett, Ray Moholt, Bob Newlin; Photographer, Glenn Chaffin Jr.; Circulation, Pat Eyer; Faculty Adviser, E. B. Dugan.

MONTANA'S
OLDEST BANK
**FIRST
NATIONAL
BANK**
MISSOULA'S
INDEPENDENT BANK

'Homarts' Boost Annual Taffy Pull

The annual taffy pull, sponsored by the Homarts club, will be today from 3:30 to 4:30 p.m.

All home economics majors and minors are invited to attend this session any time during the hour in the cooking lab of the Natural Science building.

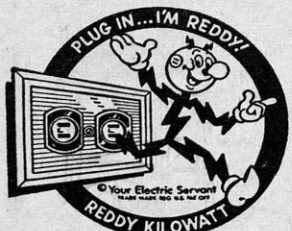
GEOLOGY HONORARY HAS COFFEE HOUR

Sigma Gamma Epsilon, geology honorary fraternity, has resumed its regular Wednesday noon coffee and discussion hour.

Papers and subjects are presented by the members and professors.

Got a Job to Do? "Wire" for Help!

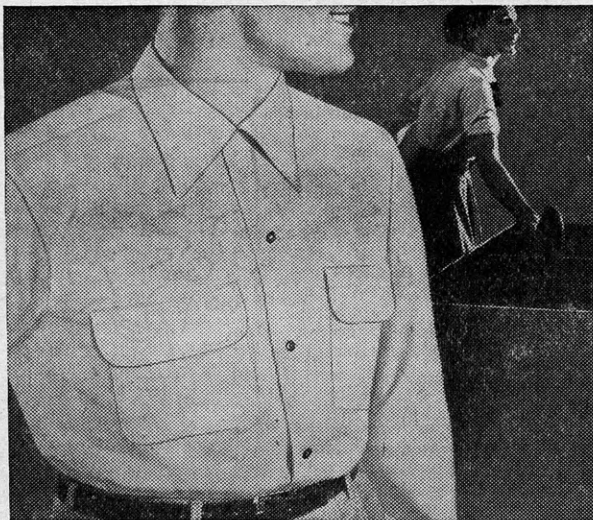
Electricity Will Do It
FAST - CHEAP



The Montana
Power Company

College Men Look "Smoother" Thanks To Arrow Gabanaro

Trim-Fitting Sports Shirt
Further New Trend
To Neatness



One of the most marked changes in campus fashions this year is the switch to the neat sports shirt that fits as well . . . looks as trim . . . as a regular shirt. This change has been brought about by Arrow Gabanaro—a washable rayon gabardine sports shirt in exact collar sizes and sleeve lengths . . . Sanforset® to keep its perfect fit. Available at all Arrow dealers!

ARROW
TRADE MARK

SHIRTS • TIES • UNDERWEAR • HANDKERCHIEFS • SPORTS SHIRTS

Shop at

K and W Grocers, Inc.

FOR THE BEST IN FRESH AND SMOKED
MEATS, STAPLE AND FANCY GROCERIES

PHONE 2-2164

541 SOUTH HIGGINS

FOR ARROW UNIVERSITY STYLES

You look better...feel better in
Arrow "Gabanaro" • in your exact collar size
• your exact sleeve length
6.50 • Sanforset® for lasting fit



Get that smart neat look with Arrow Gabanaro . . . America's #1 sports shirt. Washable rayon gabardine . . . Sanforset® to keep its fit. With exclusive Arafold collar that brings you extra comfort, extra smartness, worn with a tie or without. Stop in today . . . choose from many handsome colors in your exact size.

The Mercantile
MEN'S DEPARTMENT

Jumbolaya Downs ATO 43-0; PSK Forfeits to PDT

Jumbolaya swamped Alpha Tau Omega in the only intramural touch football game played on the Clover bowl yesterday afternoon. Phi Delta Theta was awarded a forfeit decision as Phi Sigma Kappa could not produce a full team.

Jumbolaya, led by the passing arm of little Bobby Hendricks, registered win No. 4 as they breezed through a chilly 43-0 triumph. Displaying his usual effectiveness, Hendricks tossed for six TDs and a pair of extra points with Tom Pomroy (2), Dick Bork, Bob Murray, Bill McNutt, and Dan Casey his scoring receivers. Walt Lonner split the posts on two after touchdown kick attempts.

Undeclared Jumbolaya showed a keen knowledge and operation of inside football throughout the one-sided romp.

Today's Touchball

Sigma Chi and Forestry will play off a league A second-place tie on field one at 4:30 p.m. Officials are Neil Eliason and George Tarrant.

INTRAMURAL NOTICES

Thursday afternoon at 4 is the deadline for tennis rosters in the I-M offices. Tennis singles contests will be played as long as we have good weather. There is a maximum of seven and a minimum of two names on each roster.

Volleyball will start next Tuesday at 4:30 p.m. All football team rosters are automatically transferred to volleyball, but if an organization enters more than one team new rosters must be submitted.

Individual Performance on Grizzly Squad Ranks High

The Montana Grizzlies are trailing their opponents in total team figures after five games this season, but individual performances by MSU players rank high.

Montana has gained 1,154 yards on running plays to its opponents 1,249. Dick Heath has passed for 518 yards while opposing quarterbacks have picked up 483 yards. The total net yards gained from running and passing by the Grizzly opponents is 1,653 compared to 1,485 for MSU. Montana has picked up 77 first downs to their competitors' 66.

The Silvertips have punted 10 more times than their rivals. Eddie Anderson has punted 26 times,

Heath twice, and Murdo Campbell one, for a total of 981 yards. Opponents have punted 19 times for a 684-yard total.

Grizzly gridders have fallen behind in the scoring department due to their three losses and two wins. They have crossed the goal line 13 times and their rivals have scored 18 times. Montana has completed six extra point attempts and the opponents have made 11.

Dick Imer leads Grizzly ball carriers with a total of 544 yards and a 7.7 average per carry. Murdo Campbell has packed the pigskin 217 yards for a 5.3 average. Dale Shupe is third in the rushing department with 100 yards and a 3.7 average.

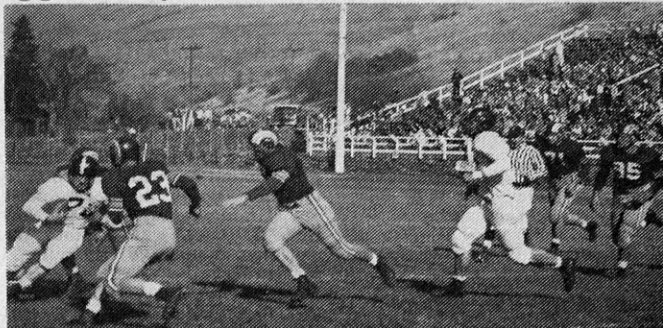
Dick Heath has been doing all the passing for the Grizzlies. He has completed 36 of 90 for a 40.0 average and a total gain of 518 yards.

Imer, Campbell and Anderson are Nos. 1, 2, and 3 in the pass receiving department. Imer has caught six passes for 150 yards and two touchdowns. Campbell pulled in seven passes for 84 yards and one TD. Anderson received four passes for 70 yards and one TD.

Imer has picked up 149 yards on nine kickoff returns for a 16.6 yard average. Campbell has a 19.3 average with 77 yards in four returns. Dick Heath has lugged the ball back twice, picking up 47 yards and a 23.5 average.

Imer leads the scoring for MSU with 38 points. Campbell and Heath have each picked up 12 points and Bill Gue scored six. Tom O'Brien has completed two of three conversion attempts, Joe DeLuca has hit two for four and Dick Imer two out of five.

Aggies Say 'Let Me at 'em' . . .



Dick Imer (70) Grizzly halfback, is trapped by three Aggie tacklers in the Homecoming game last Saturday. Owen Deuchler of Montana runs in to assist Imer.

Don't Miss

The Virginia City Players

Friday—THE FARMER'S DAUGHTER

Student Union Theater

Saturday—THE VIRGINIA CITY CABARET

Gold Room

STUDENT TICKETS 60¢ CURTAIN TIME 8:15 P.M.



MURDO CAMPBELL

If an injury occurs to anyone in the Montana backfield this year, Murdo Campbell is ready to step in and take over. Murdo has played all four backfield positions this season, as he was shifted from quarterback to make use of his excellent running ability. In the Grizzlies' first five games this season, "Tub" has rushed for 217 yards in 40 tries for a 5.3 average. The five foot 11 inch 170 pound junior is second in pass receiving with seven catches for 147 yards, has returned 4 kickoffs for 77 yards, and has run back four punts for 38 yards.

In Saturday's 32-31 Homecoming victory, "Mr. Versatile" scored the first two Grizzly touchdowns and played a bang-up game as defensive safety man.

Murdo is a 20 year old journalism major from Great Falls.

WALFORD ELECTRIC COMPANY

RADIO and ELECTRIC REPAIRS

Phone 3-3566

Our Special Concern . . .

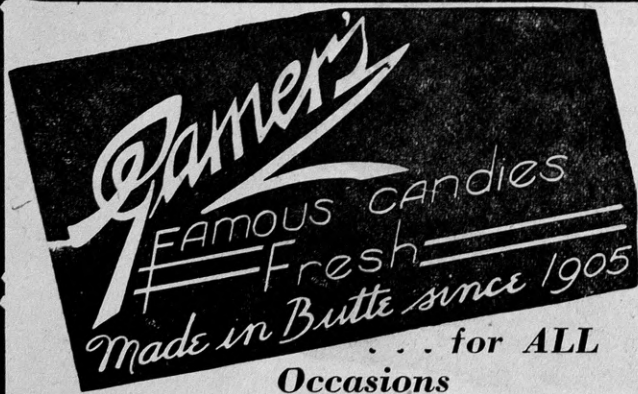
STUDENT PRINTING NEEDS

Delaney's

Bureau of Printing

Palace Hotel Building

Phone 4-4079



for ALL Occasions

BOXED SELECTIONS AND PAN CANDIES One to Five-Pound Boxes

MISSOULA DRUG CO.

When you know your beer . . . IT'S BOUND TO BE BUD

Budweiser is beer at its best for a very good reason . . . it is brewed and aged by the costliest process known to give Budweiser the distinctive taste that has pleased more people, by far, than any other beer in history.



Forty States, 11 Foreign Nations Featured at 'Campus Crossroads'

BY ED STENSON

The campus oval, with its proposed cemented diameter currently receiving the pro and con treatment, is a fine showcase for any automobile dealer. Not only does it display the extremes from antiquity to streamline, but also it stages a surprising cross section of adventurous book learners.

In one circular spin, the sight-seer may observe 10,000 lakes, the famous Idaho spud, and a little dairyland flavor sprinkled among the "Treasures." Occasionally one is reminded that wheat and Kansas are synonymous. Those who are not already aware of it may be interested to know that New Mexico is the "Land of Enchantment."

"It isn't worth a continental" wasn't phrased for MSU. Here is an intermingling enrollment, larger by 68 than last year's total, which includes representatives from 40 of the 48 states, Washington, D. C., Alaska, and Hawaii. Brogues which are characteristic of 11 foreign countries create an international atmosphere.

A survey at the office of the Deans reveals that the "University Crossroads" credits the "Treasure State" with 85 per cent of the fall quarter enroll-

ment. One-fourth of the Montanans are from Missoula.

Californians rank second in campus population with 42. Completing the "Top 10" in representation are Illinois, Washington, North Dakota, Idaho, South Dakota, Wisconsin, Canada and Wyoming, in that order.

Nations outside the U. S., in addition to Canada, which are represented include Afghanistan, Arabia, Canal Zone, Denmark, Formosa, France, Greece, Honduras, Peru, and Sweden.

The greatest distance from his home within the continental U. S. is John S. Spencer Jr. of Orlando, Fla. He is enrolled in the School of Forestry.

Mohammad Yassin Azim, an exchange student from Kahul, Afghanistan, has traveled the greatest distance internationally for educational advancement.

The survey, which includes 202 veterans with Korean service, also supports the national statistical report that more men than women are enrolled in U. S. colleges and universities. The MSU enrollment exceeds a 2-1 ratio.

Kindergarten Class Is Discontinued

The kindergarten class of the child development course has been discontinued for lack of room in the new Women's Center-Home Economics building.

The kindergarten, with the Nursery school, forms the child development unit of the home economics department. The child development unit facilities are open to majors in sociology, education, psychology, and music, along with home economics majors.

Stressing proper guidance for the normal development of the child, the kindergarten formed a necessary companion to the Nursery school. Helen Gleason of the home economics department hopes to be able to revive the kindergarten school at some later date.

PAT Will Sponsor History-P. Science Club for Students

Phi Alpha Theta, history honorary, will sponsor a history-political science club, Howard Bryan, club president, said Tuesday.

The chapter has finished outlining general qualifications. Those who are not history majors but wish to join the club should have had 15 hours of history or political science. All departmental majors from freshmen through graduates will be considered.

Eleven students have been elected to membership and will be notified this week. Invitations to potentially interested and qualified persons will be distributed before the end of the month. New initiates will be honored by a Phi Alpha Theta banquet during the year.

Classified Ads . . .

BOOTHS FOR LADIES! The Virginia City Cabaret opens Student Union Gold room, Saturday, 8:15 p.m. 14c

Pharmacists Plan Informal Smoker

Kappa Psi, national pharmacy fraternity, is sponsoring a get-acquainted smoker for all pharmacy upperclassmen tonight at 8 o'clock in the Eloise Knowles room. Jack E. Orr, dean of pharmacy, promises entertainment and refreshments for all who attend.

A business meeting for active members will be held at 7:30, preceding the smoker.

Traditions Picks Yell King, Queen

Traditions board selected Glenn E. Walthall, Los Angeles, Calif., as yell king and Jo Ann La Duke, Ronan, as yell queen for the year 1953-54.

Shirley Thompson, Pat High, Carol Cain, and Marilyn Shope, all of Missoula, have been selected as cheerleaders.

These yell leaders will be awarded emblems and sweaters at the close of spring quarter.

KAIMIN WANT ADS PAY!

UNIVERSITY GROCERY

GROCERIES
MEATS
VEGETABLES

Close to the Campus—
1221 Helen Avenue

COUNSELORS WILL TELL FROSH HOW TO STUDY

Dean Herbert J. Wunderlich and Kermit Severson, counselor and instructor, will speak to the men of Craig hall tonight and tomorrow night at 7 o'clock in the hall lounges.

They will give the freshmen boys conferences on "How to Study," said Dean Wunderlich.

PLAYERS STILL NEEDED FOR BRIDGE SESSIONS

More people are needed to sign up for bridge lessons which will begin October 25. Anyone interested should sign up in Cyrille Van Duser's office in the Student Union.

Anyone interested in learning how to play duplicate bridge or chess should sign up too.

BROWNIE'S IN 'N OUT

Is the Place to Go for

- SHAKES
- CHEESEBURGERS
- COFFEE
- COKES
- HAMBURGERS

1640 West Broadway

Jim Thane Says:

IT IS PRETTY DARN SELDOM THAT YOU CAN FIND A JOINT THAT OFFERS A COMBINATION OF SPEED AND QUALITY LIKE WE DO. Usually you find that where they are long on quality it takes forever to get results. And where speedy service is offered more often than not the quality of the product suffers. We are proud to be able, due to our special NO-SHRINK, NO-STINK PROCESS and our courteous, efficient employees, to offer SPECIAL SERVICE AT REGULAR PRICES, TOGETHER WITH OUT-OF-THIS-WORLD QUALITY. IN AT TEN DIRT, CLEAN AT TWO THIRTY. GIVE US A TRY.



DRIVE-IN CLEANERS

420
Orange

DIAL 3-3131 FOR FREE PICKUP AND DELIVERY

GLASSES FITTED . . . ALL OPTICAL REPAIRS

DR. L. R. BARNETT
DR. D. R. BARNETT
DR. Wm. BARNETT

Optometrists

129 EAST BROADWAY
MISSOULA, MONTANA

SEE YOUR Oldsmobile Dealer

For the Best in Used Cars
Service Facilities
Body and Paint Work
'53 Rocket Oldsmobiles

Turmell Motor Co.
224 W. Main Phone 2-2683

EVERYBODY WEARS 'EM

... BECAUSE
THEY WEAR!



LEVI'S

AMERICA'S FINEST OVERALL
SINCE 1850 A.T.M. REG. U.S. PAT. OFF.

Dragstedt's

EVERYTHING MEN WEAR
ON CIRCLE SQUARE

DON'T SAY ORANGE, SAY

Desbitt's

a soft drink
made from
real oranges



ZIP BEVERAGE COMPANY

MANUFACTURERS AND JOBBERS

Phone 4-4356

GUARANTEED STEAKS



4 B's CAFE

GENUINE REGISTERED
Keepsake
DIAMOND RINGS

**Make Her Dreams
Come True with a
Keepsake
Matched Set**



KEEPSAKE

ENGAGEMENT RINGS \$50 up

WEDDING RINGS \$7.50 up

BOB WARD AND SONS