

University of Montana

ScholarWorks at University of Montana

Montana Kaimin, 1898-present

Associated Students of the University of
Montana (ASUM)

1-22-1954

The Montana Kaimin, January 22, 1954

Associated Students of Montana State University

Follow this and additional works at: <https://scholarworks.umt.edu/studentnewspaper>

Let us know how access to this document benefits you.

Recommended Citation

Associated Students of Montana State University, "The Montana Kaimin, January 22, 1954" (1954).

Montana Kaimin, 1898-present. 2971.

<https://scholarworks.umt.edu/studentnewspaper/2971>

This Newspaper is brought to you for free and open access by the Associated Students of the University of Montana (ASUM) at ScholarWorks at University of Montana. It has been accepted for inclusion in Montana Kaimin, 1898-present by an authorized administrator of ScholarWorks at University of Montana. For more information, please contact scholarworks@mso.umt.edu.



Montana Kaimin

Montana State University, Missoula, Montana

Volume LV Z400 Friday, January 22, 1954 No. 49

Colonel Hays Indicates Reds Could Invade East Germany in 30 Minutes

BY BILL HEINTZ

"It would take the Russian army in East Germany only 30 minutes to move by truck into the western sector of Germany" and begin a third world war. It would take them only two hours to reach into the very center of West Germany and prevent that country from being our first bulwark in the event of war.

These facts, which might stir many an American out of a false feeling of security, were presented last night by Lt. Col. S. H. Hays, professor of military science and tactics at MSU. He spoke before an open meeting of the International Relations club in the Liberal Arts building, on the subject of rearming West Germany.

From the political point of view, the battle line should be on the Elbe river, "but we can't do it with the strength we have now," Colonel Hays said. The U. S. has only two divisions in Germany, with a few more being made up from countries such as

England and France, but these are almost nothing compared to the 18 divisions that are available now in East Germany.

Hays, who has spent more than six years in Germany at different periods, and who left there in the spring of 1953, said that the U. S. has three major policies in Europe: One, to prevent the USSR from attacking; two, to prevent repetition and spread of communism such as occurred in some of the eastern European countries; and three, to win the cold war. German rearmament would be part of the answer in helping carry out these objectives.

Today's Weather—

Cloudy with snow today and tonight. Moderating temperature with maximum this afternoon expected 25-30. Possibility of freezing rain this afternoon.

Yesterday in Missoula:

Maximum 7 at 9:30 p.m.
Minimum -12 at 12 midnight

'Gib's' Cafe Parisian Show Best Yet, Says Lester

BY FRANK MILBURN

"It's the best yet!" John Lester, professor of music, said yesterday of Gib Leibinger's "Cafe Parisian," this year's annual Nite Club dance show sponsored by the School of Music.

Leibinger, Miles City, graduate student in music, is co-producing the show with Lester, who has directed 13 past Nite Club dance shows.

The 50-minute comedy is to be presented twice on Jan. 30 in the Governor and Mayfair rooms of the Florence hotel at 8:15 p.m. and 10:15 p.m. Dancing will begin at 9 p.m. in the Bitter Root room, formerly called the Florentine Gardens.

Though Leibinger has composed music for past Nite Club shows, "Cafe Parisian" is the

group he has composed songs and made choral arrangements.

The comedy's plot concerns the experiences of a Texas oilman and his cousin on a Paris vacation. The story revolves around the Cafe Parisian where the French become more Texan and the oilman becomes more Parisian.

Jim Cole, former graduate student, will play the part of Pierre Marchand, proprietor of the cafe. Beverly Herman, Sidney, will take the role of his daughter, Colette.

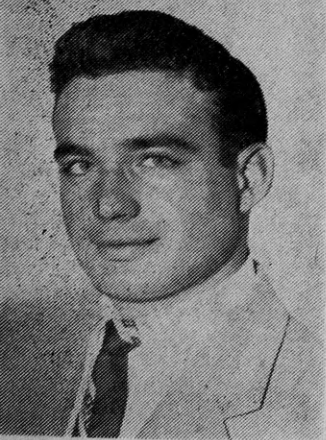
Jim Howe, the wealthy oilman, will be played by Ronald Lundquist, Billings, and his cousin, Connie, by Jeanne Couture, Arlee. The part of Paul Duval will be enacted by Robert Hoyem, Missoula. James Uglun, Bozeman, will be the narrator.

Others in the cast include Gordon Travis, Moberge, S. Dak.; Kim Forman, Miles City; Gary Reese, Kalispell; Don Schessler, Laurel, and Tom Needham, Ronan. The 28-piece orchestra and the 20-voice chorus, the Jubileers, are under the direction of Lloyd Oakland, professor of music.

LeRoy Hinz, assistant professor of English, is directing the show. Abe Wollock, instructor in English, is in charge of lighting and technical work.

The score was orchestrated by Judson Maynard, Ravalli, and Arnold Carruthers, Kalispell. The vocal and choral arrangements were done by Leibinger.

Tickets for the dance show may be obtained at the Coke store in the Student Union from 9 to 11 a.m. and from 1 to 4 p.m. beginning Monday, Jan. 25. The price is \$3 per couple, and all tickets must be bought in advance. There will be no table reservations.



GILBERT LEIBINGER

first that he has written entirely. Originally intended as a full-length stage production, the time limitations have made necessary the use of a narrator who will fill in the continuity of the plot.

Leibinger is the director of the freshman women's sextette, the Elks boy's choir, and accompanist for the Jubileers. For the latter

Board Approves Negotiations for Big Name Bands

Central board; in its lengthy meeting earlier this week, gave Pres. Norm Anderson, Chinook, the go-ahead to negotiate for two big name bands, one each for winter and spring quarters.

The Louis Armstrong and Buddy Morrow bands received unanimous approval from the board, and Anderson will begin the initial arrangements immediately.

"Armstrong will sell any time," Anderson said in discussing an early or mid-February performance. The Buddy Morrow performance, if it materializes, will be either March 23 or 24, he said.

Preliminary plans for Aber day, the newly organized card section, and the possibilities of an MSU snow carnival were also discussed by the board.

Jim Burke, Livingston, Aber day committee chairman, reported that plans are underway to organize a student-faculty committee.

"The committee will include five or six students and three faculty members, according to present plans," Burke said. He said that the M club president, Traditions board chairman, and the AWS president would be on the committee.

COPPER ROOM SCHEDULED SITE FOR SENTINEL PIX

Following is the schedule of Sentinel pictures which will be taken in the Student Union Copper room today:

3:00 p.m.—Phi Epsilon Kappa
3:30 p.m.—Venture staff
3:45 p.m.—Store board
4:00 p.m.—Convocations committee.
4:15 p.m.—Outside Entertainment committee.
4:30 p.m.—Bear Paw
4:40 p.m.—Education club
4:45 p.m.—Grizzly Growlers
5:00 p.m.—M-book committee
5:10 p.m.—Cheerleaders
5:15 p.m.—Kams and Dregs
5:30 p.m.—Student Religious council (last fall's group).

Forum to Discuss Social Standards

Dean Maurine Clow, Gordon Browder and Dean Herbert Wunderlich will be special guests of the Montana Forum today noon in the Eloise Knowles room of the Student Union.

Members of the social standards committee will also be guests of the forum which will discuss University rules and regulations. Andrew Browman, Missoula, will have charge of the program for the meeting.

SX Announces Candidates for '54 Sweetheart

Sigma Chi announced the 1954 "Sweetheart" candidates Tuesday. Each women's living group initially nominated five girls from its house or hall. The Sigma Chis chose two girls from the five to represent each group.

The candidates are: Sallie Hollecker, Great Falls, and Rosie Aker, Kalispell, Alpha Phi; Ruth Franz, Kalispell, and Carol Hestekin, Billings, Kappa Alpha Theta; Lexie Shellebarger, Seattle, Wash., and Gayle MacDonald, Balboa, Canal Zone, Kappa Kappa Gamma.

Joan Bachman, Missoula, and Dorothy Stahl, Billings, Delta Gamma; Roberta Gilbert, Helena, and Janice Smidt, Helena, North Hall; Helen Vidal, Helena, and Beverly Lahn, Miles City, New Hall; Paula Sutherland, Corvallis, and Roberta Camp, Hamilton, Synadelpic; Sharon Dalling, Butte, and Cheryl King, Gardiner, Sigma Kappa; Judy Keil, Billings, and Kim Williamson, Charlo, Corbin Hall.

The girls will be entertained at the Sigma Chi house the next three Wednesday evenings. The Sunday before the Sweetheart ball the five finalists will be chosen. The "Sweetheart of Sigma Chi" will be crowned at the ball February 13.

New Orleans 'Era of Jazz' Depicted in 'Hey Mac!' Play; Auditions Start Monday

Auditions for "Hey, Mac!" will begin next week to fill dancing, singing and reading parts.

"Hey, Mac!" is being presented in the near future by the Student Union Theater Activities committee. Jimmie Dick, Missoula, Alan Goddard, Butte, and Carol McManaway, Helena, wrote the play from an original story by Goddard.

"Hey, Mac!" takes place about 1929 in New Orleans along with the jazz era, prohibition, and bootleggers. The plot is essentially dramatic, yet there is humor, said Goddard.

Fourteen original songs written by Don Stagg, Butte, will be presented in this play. Fourteen dance routines also will be featured.

Everybody is invited to audition as this is an all-student play and there are many varied and different parts, both comedy

and dramatic, according to Goddard. Auditions will be in the Student Union auditorium at the following times:

Monday, 3-5:30—singing.
Monday, 7-9—dancing.
Tuesday, 7-9—singing.
Wednesday, 3-5:30—reading.
Wednesday, 7-9—reading.
Thursday, 3-5:30—singing and dancing.
Thursday, 7-9—reading.
Friday, 3-5:30—final auditions.
Friday, 7-9—final auditions.

Jesse Plans Retirement At Spring Quarter's End

Dr. Richard H. Jesse, professor and chairman of the Chemistry department for the past 42 years, will retire at the end of this spring quarter. He has also been dean of the college of arts and sciences and vice-president of MSU since 1945.

Dr. Jesse has taught such outstanding American chemists as Harold Urey, Nobel prize winner; Raleigh Gilchrist, of the bureau of standards; Reynold Fuson, associate editor of the Journal of American Chemistry, and many others.

He entered the University of Missouri at the age of 14, and graduated four years later in Latin and Greek. He played tackle on the Missouri football team for three years. He made Phi Beta Kappa;

studied three years at Harvard, where he received M.A. and Ph.D. degrees in chemistry. He held fellowships for three years.

Dr. Jesse is a member of many professional groups and is a contributor to chemical journals.

As for his future plans, Dr. Jesse said, "I expect to stay in Missoula and read and garden. I also expect to converse with my friends."

Dr. Jesse said he has a garden in his yard and also one in back of the Co-op housing unit. He gets his best results with raspberries, dahlias, and zinnias.

When asked to compare the older generation of students with the younger, he said, "The good old days are very much the same. This generation and that are equally good and bad."



DR. R. H. JESSE

Phi Lambda Upsilon, professional chemical society; Sigma Xi, scientific honorary; Gamma Alpha, general scientific fraternity; and Alpha Chi Sigma, chemistry society. His father was Dr. R. H. Jesse Sr., president of the University of Missouri.

After Missouri he worked a year in a St. Louis chemical house, then

Wildlife Members To See Two Films

Wildlife club members will see two Forest Service films Monday at 7:30 p.m. in N307, according to Martin Onishuk, president.

"Avalanches to Order," a color movie, emphasizes the importance of skiers doing their part in obeying avalanche warning signs. The film is narrated by Lowell Thomas, who has frequently skied at national forest winter sports areas.

KAM, DREG MEET SET

All Kams and Dregs will report to the Student Union Copper room at 4:15 p.m. They are to bring with them a white shirt and tie and an individual costume, said Jim Ryan, Anchorage, Alaska, president.



Society

Hats, Silhouettes, Glasses Set Atmosphere for Dance

BY PAT O'HARE AND ELAINE ALMOS

Top hats, silhouettes of the New York skyline and cocktail glasses will set the mood Saturday night for "Manhattan Serenade," a freshman class sponsored, all-University dance.

Phi Sig "Coffee Dan's," ATO "Prohibition Ball," and a Sigma Nu fireside will be the Greek functions this week end.

Freshman Class "Manhattan Serenade" will be held from 9 p.m. to 12 p.m. Saturday (please see page four).

**ALASKA, HAWAII
and the WEST**
Exceptional opportunities. Register
now. Western certification booklet
with Free Life Membership.
HUFF TEACHERS AGENCY
2120 Gerald Ave. Phone 6-6653
39 Years of Service Member NATA

**WALFORD
ELECTRIC
COMPANY**
RADIO AND ELECTRIC
REPAIRS
Phone 3-3566

BEDARDS
CHICKEN
TO
GO
HAMBURGERS
(Deluxe)
TO
GO
Phone 9-9903
AND WE'LL HAVE
YOUR ORDER
READY
BEDARDS
223 West Front

KAIMIN CLASS ADS PAY!

Shop at
K and W Grocers, Inc.

FOR THE BEST IN FRESH AND SMOKED
MEATS, STAPLE AND FANCY GROCERIES

PHONE 2-2164

541 SOUTH HIGGINS



Eddy's Butter Potato Bread
Made with REAL BUTTER

JIM THANE SAYS:

I REMINDED PEOPLE IN THE AD THE OTHER DAY THAT SPRING IS JUST AROUND THE CORNER. Some nice lady up on the east side called me up this morning and said she hoped I was a better dry cleaner than I am a weatherman. She said "YOU CRAZY MIXED UP MAN — IF YOU THINK SPRING IS JUST AROUND THE CORNER YOU JUST HOP IN THAT CLEANING TRUCK AND BUZZ UP AROUND THIS NECK OF THE WOODS! SPRING IS A LONG WAY OFF." Oh, well, we can't be right all the time, but we do think we are on the right track when we say it's time to get that spring wardrobe ready for the day when the snow melts and the sun shines. Why not call us or drop in today?

DRIVE-IN CLEANERS
420 ORANGE
DIAL 3-3131
FOR FREE PICKUP
AND DELIVERY

**STUDENTS ASKED TO SIGN
LIST FOR INDIVIDUAL PIX**

Students who wish to have their individual pictures taken for the Sentinel are asked to sign the list in the Student Union business office by Friday, according to Doug Anderson, Conrad, Sentinel editor. If enough students are interested, the Sentinel will make arrangements with the photographer.

YELLOW CAB

TAXI
6-6644

"The Thinking Fellow
Calls a Yellow"

*For Your
Parties, Dances,
and Firesides*

We Can Supply You
With

COCA-COLA
and
**MISSION
ORANGE**

Also

Mission Root Beer, Grape
Drink, Lemonade, Creme
Soda, Strawberry, Grapefruit,
Black Cherry and Ginger Ale.

We Deliver

**COCA-COLA BOTTLING
COMPANY of MISSOULA**
Phone 3-3352

Baroque Duo Plays Sunday

The Baroque Duo—Otto Huttenbach, viola da gamba, and John Hamilton, harpsichord—will present a lecture-recital Sunday at 4 p.m. in the recital hall of the School of Music.

Playing on the typical instruments of the 17th and 18th centuries, Huttenbach and Hamilton will devote their program entirely to music of the baroque period. Huttenbach plays the tenor viol as well as the viola da gamba. Hamilton performs on one of the largest harpsichords in the country.

This concert is the second of the recital and chamber music series sponsored by the Music School foundation. The Hungarian String Quartet, the MSU Trio, George Larkham Scott, organist, and a

Today's Meetings—

Montana Forum committee, noon, Eloise Knowles room.

Inter Varsity Christian fellowship, 1 p.m., Eloise Knowles room.

Kams and Dregs, 4:15 p.m., Copper room.

Newman club, 5 p.m., Copper room.

REC, 4 p.m. Monday, Eloise Knowles room.

Newman club, 5 p.m. Monday, Copper room.

Sponsor corps, 5 p.m. Monday, Gold room.

I-M HOOP SCHEDULE

The third week of Intramural basketball competition begins Monday with Education club playing Kappa Psi at 6:30 p.m.; Geology scrapping with Oddballs at 7:30; South hall teaming against No Names at 8:30; and Deacons matching shots with Phi Epsilon Kappa at 9:30. All teams are entered in League B.

Eliason and Olsen, Gilmore and Kann will take turns with the whistles.

Classified Ads . . .

FOUND: Pink shell horn rimmed glasses in Journalism 306. Call for in Dean Ford's office. tf

FOUND: Two cigarette lighters and pair of eye glasses. Identify at Student Union business office. tf

LESSONS: Beginning guitar lessons. Phone 9-2310. 49c

LOST: Small rawhide purse in or around the B-E building Monday. Containing pair of horn rimmed glasses. If found, please call Beth O'Hanlon, 9-7440. 49c

FOR SALE: One tuxedo. Size 39. Good condition and good style. Phone 4-4176. 49c

FOUND: Rhinestone earring by the Law school. Owner may have by calling 9-2858. tf

The Montana KAIMIN

Established 1898

The name Kaimin (pronounced Ki-meen) is derived from the original Selish Indian word and means "something written or a 'message'."

Published every Tuesday, Wednesday, Thursday, and Friday of the college year by the Associated Students of Montana State University. Represented for national advertising by National Advertising Service, New York, Chicago, Boston, Los Angeles, San Francisco. Entered as second-class matter at Missoula, Montana, under Act of Congress, March 3, 1879. Subscription rate \$5.00 per year.

Printed by the University Press
55

Member,
Montana State Press Association
Member, Rocky Mountain
Intercollegiate Press Association

Editor, Bill Jones; Business Manager, Winnie Dinn; Associate Editors, Joan Brooks, Shirley DeForth, Carla Hewett, Art Mathison, Bob Newlin; Photographer, Glenn Charlin Jr.; Circulation, Pat Eyer; Faculty Adviser, E. B. Dugan.

DROP IN
AND LISTEN TO

"Show Biz"

Narrated by
George Jessel

The Music Center

(310 North Higgins)

sonata recital by Harry Adaskin and Frances Marr are still to be presented.

Season tickets are available at

the office of the music school for \$5. Single tickets for this performance may be obtained at the box office Sunday at 3:30 p.m. for \$1.50.

*The Big Furniture Sale at Lucy's
Starts*

Monday, January 25

J. M. Lucy and Sons

Since 1889

93
Stop and Go

★ **HOT COFFEE**

- HOT CHILI
- BEEFBURGERS
(We Grind Our Own Beef)
- FRENCH FRIES
- MALTS

**NEWLY REMODELED
TO SERVE YOU BETTER**
SOUTH ON HIGHWAY 93

LITTLE BOY
Shirts
WITH A FEMININE AIR



They're the rage of the season—these pert, boy-shirts with their crisply-tailored look! You'll adore their winter-bright colors, their smart French cuffs, and their borrowed-from-brother styling!



Fresh-looking stripes and prints in a wide range of colors to go with everything!
Try the little-boy look in plain colored broadcloth! White and pastel colors.

\$3.50
and Up



Cecil's

MONTANA'S
OLDEST BANK
**FIRST
NATIONAL
BANK**
MISSOULA'S
INDEPENDENT BANK

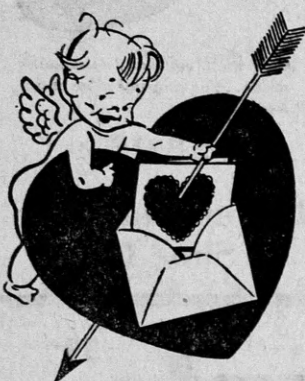
UNIVERSITY GROCERY

1221 Helen Avenue

**Snacks for Your
Convenience**

—NEAREST THE CAMPUS—

YOU CAN'T MISS!



Finding just the
right kind of

GIBSON
Valentines

in our big display.
Best selections now!

**Office Supply
Company**

Play Continues in WRA Round Robin

Kay Calvin, Miles City, is high scorer in the women's basketball round-robin, having made 34 points for North hall in three games. Sue Blake, Missoula, is second and has made 32 points for the Independents.

The Independents, North hall, and the Tri Delts are the three leading teams, each winning two games.

The Tri Delts beat Alpha Phi, 16 to 15, and Kappa Kappa Gamma forfeited to Corbin hall in the games Tuesday afternoon.

North hall won over the Independents, 25 to 15, Wednesday afternoon.

Monday, the Independents will play the Kappas at 4:15 p.m. and North hall will play Kappa Alpha Theta at 5 p.m.

FOR A PLEASANT AFTERNOON

*Relaxing
and
Healthful*

**LIBERTY
Bowling Center**

DIXIE CUPS

*For Your
Week-end
Parties*

**HANSENS' ICE
CREAM STORE**

519 South Higgins
Open 'til 10 p.m.

Johnson Still Up In Skyline Race

Montana's Grizzly basketball team will play against the Skyline conference leading scorer, Dean Larsen, Friday night when they tangle with the BYU Cougars at Provo, Utah. Saturday the local cagers seek victory over the Utah Redskins at Salt Lake City and Monday night they play a non-conference game with the Idaho State Bengals at Pocatello.

Ritch Johnson, MSU basketball co-captain, retained his lead in field goal percentages in Skyline play, hitting on 10 of 17 shots in four games for a .588 percentage.

Co-captain Ed Anderson, Grizzly forward, is 12th in conference scoring with 23 field goals in 52 attempts for a percentage of .442, fifth best in the Skyline. Ed has also connected on six of seven free throws for a total of 52 points and a per game average of 13 points.

Ed Argenbright holds 16th spot in scoring by connecting on 15 of 59 shots for a .254 percentage. The sophomore guard has scored on 14 of 17 free throws for a total of 44 points and an average of 11 points per game.

Frosh Hoopsters To Meet Gonzaga In Kalispell Battle

Montana University Cubs travel to Kalispell tomorrow for their basketball encounter with the Gonzaga Frosh at the Flathead County High gym Saturday night.

Coach Bob Byrne's Yearlings will face stiff competition with the Spokane crew. The Gonzaga squad sports a 12-1 record this season and is being acclaimed as one of the finest frosh teams in the school's history.

The unbeaten Cubs are led by tall Ray Howard, who has scored 97 points in five games for a healthy 19.4 average. "Zip" Rhoades is second in Cub scoring with 58 points and a 11.6 average. Al Dunham has rimmed 55 points, Bob Powell 47, Jim Peterson 45, Maury Colberg 27, "Lefty" Monson 17, Haynes Byerly 16, and Pete Muri 13. The Cubs have averaged 79.6 points per game to their opponents 55.2 in the five tilts.

The 10-man squad that will leave for Kalispell at noon Saturday includes Howard, Rhoades, Dunham, Powell, Peterson, Colberg, Monson, Byerly, Muri, and Breckinridge.

Two Close Games Mark I-M Action

Intramural basketball fans got a taste of close games and runaways in Wednesday night's play. Schooners and Pinetoppers fought to a 36-35 finish, with the Pinetoppers closing fast. Marvin Nelson led the Pinetoppers with 12 points while Jim Sinclair scored 11 for the Schooners.

Seagram "7" jumped into a 20-7 lead and then added 28 more in the last half to win over the Scrounges 48-24. High scorers were Richard Spalding with 10 for the Scrounges and Seagram's Danny Rieder with 22 points—high for the night.

Sodbusters took the Simonizers in a close 38-33 game. Roger Rouse made 13 for the Simonizers; Sodbusters' Welch had 16.

The Kubabes, paced by Ed Stiles' 18 points and by Don Pehlke's 14, overran the Tommy Hawks to the tune of 83-32. Kubabes scored 36 points in the first half and poured through another 47 in the second half. Gary Sorensen and Lino Marsillo each made 9 to lead the Tommy Hawks.

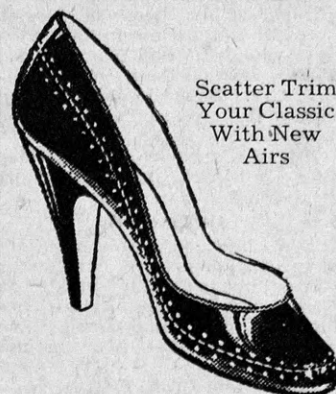
HAVE YOUR HAIR CUT

*The Way
You Like It*

Prompt, Courteous
Service

**PALACE HOTEL
BARBER SHOP**

PENNEY'S
ALWAYS FIRST QUALITY!



Scatter Trim
Your Classic
With New
Airs

Perfect for
an evening
of dancing

6⁹⁰

Pretty foot picture! Here, your classic with new airs in the scatter-trim all-around. Black patent, with white trim. AAA to B, 5 to 9. Sanitized* for cleaner, better wear!

*Registered Trade Mark



FRAUESSI FRENCH
VALENTINES 5¢-15¢

Miniature Animals
25¢ - \$1.00

WEE SHOPPE

131 Brooks

Open Until 9 Each Evening

— The Only Gift Shop "Your" Side of the River —



THE FRESHMAN CLASS
presents

The All-University Dance

**"Manhattan
Serenade"**

Saturday, Jan. 23

FISH BOWL

FEATURING A FOUR-PIECE COMBO

FLOOR SHOW

\$1 per couple

9-12

Tickets Sold at Door

Sav Girls . . .

GET TOGETHER AND GIVE
A FINE APPLIANCE AS A
WEDDING GIFT. SEE THEM AT

THE ELECTRICAL SHOP

225 W. Broadway

Opposite the Courthouse



THE
WILMA THEATRE
presents
**JOSEF MARAIS
and
MIRANDA**

INTERNATIONAL
BALLADEERS . . .

Sophisticated
performers of folk
art . . .

Wed., Jan. 27

Curtain Time
8:15 p.m.

UNIVERSITY AND HIGH SCHOOL STUDENTS

with Student Movie Cards - - \$1.20 (Tax Inc.)

UNRESERVED SECTION ON SALE NOW

At the Wilma Office

Try It— A TRULY GREAT BEER

★ **SPARKLING
FLAVOR**

★ **RICHER,
MELLOWER**

Brewed for Your
Refreshment
By

**MISSOULA
BREWING COMPANY**



High Society Continued

(continued from page one)

day in the Fish Bowl at the Student Union. The dance will be informal and \$1 per couple. Music will be by a four-piece combo.

Kappa Alpha Theta

Judy Adams, Missoula, is pinned to John Beam, Theta Chi, Missoula.

Bette Dean Jones, ex-'54, was married Sunday, Jan. 17, to Donald Haugen, Missoula.

Sigma Alpha Epsilon

The SAEs have elected new officers, headed by Don Enebo, Stevensville, as eminent archon. Other officers are Jim Ford, Missoula,

deputy; John Earll, Great Falls, treasurer; Bill Hammer, Stanford, recorder; Greg Wallander, Froid, chronicler; Ken Leuthold, Laurel, warden; Dale Schneidmiller, Forsyth, chaplain; Bill Dehon, Great Falls, correspondent; John Dundas, Great Falls, herald; and Ted Cogswell, Great Falls, pledge trainer.

The SAEs have a new pledge, Stan Nordwick, freshman from Poplar.

Corbin Hall

Miss Maurine Clow, associate dean of students, and her mother were Sunday dinner guests at Corbin hall. After dinner the Corbin hall girls entertained their guests at a coffee hour in the lounge.

Corbin and Craig hall are having an exchange fireside Friday evening, Jan. 22.

Alpha Phi

The Alpha Phi pledges were guests at the house for lunch Saturday, Jan. 16.

The Sigma Kappas and Alpha Phis had an exchange dinner Wednesday evening, Jan. 20.

The Sigma Chis and Alpha Phis had their traditional snowball fight Saturday, Jan. 16, and this Saturday they will have a party at the Alpha Phi house in honor of the winners of the battle, Alpha Phi.

Delta Delta Delta

Agnes McGowan, Florence, is living in the house this quarter.

The Tri Deltas had a birthday party for Pat Grant, Butte, after dinner Sunday, Jan. 17.

Sigma Chi

The Sigma Chis entertained the "Sweetheart" candidates at the house Wednesday evening.

Bob Brown from Noyes university has transferred to MSU and is living in the house.

Phi Delta Theta

George Phelps, Missoula, was elected warden.

Bob Skates, Billings, is pinned to Leila Southworth, Park City.

Delta Gamma

Monday night the seniors successfully took their traditional sneak.

Dinner guests Tuesday were

pledges Marlene Severud, Hingham, and Marty Lowe, Missoula.

Delta Gammas had a dessert dance with Phi Sigma Kappa Wednesday.

Theta Chi

Guests this week were Richard Tracy, Stevensville, and Al Widenhofer, ex-'51, Helena.

Sigma Kappa

Caroline Thompson, Butte, was a house guest during the past week.

Phi Sigma Kappa

The Phi Sigs held a pledge-active smoker in the house last Friday after the BYU-Grizzly game.

WHY WALK

WHEN YOU CAN RIDE
IN A GOOD
LOW PRICED CAR

See These Soon

'46 NASH	195.00
'41 DODGE	195.00
'41 BUICK	195.00
'39 DeSOTO	145.00
'38 CHEV	145.00

**OLNEY
MOTORS**

300 West Main Phone 2-2101

WISE UP, BOY

As

Anyone

Knows ...

THE COLDEST

BEER IS AT

THE NORTHERN BAR

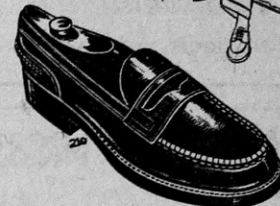
THE LONGEST BAR IN THE NORTHWEST



"Pick of the Field"

for **STYLE**
QUALITY
VALUE

Put new spring
in your step!
Come in and
select YOUR
favorite from
our complete
line.



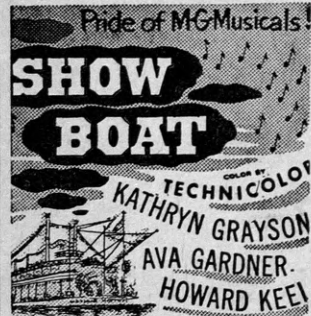
Only one of our many outstanding
styles ... an unusual value at this
low price

\$8.95

**Dixon and Hoon
Shoe Co.**

WILMA

FRIDAY and SATURDAY



STARTS SUNDAY



Four great NEW "Firsts" in Chevrolet for '54!

Count on Chevrolet to bring you the newest features first. Once again Chevrolet is first in its field with these four great advances for '54!

These other famous Chevrolet
"Firsts" in the low-price field
offer you more than ever today!

FIRST OVERHEAD VALVE ENGINE
... finest ones today

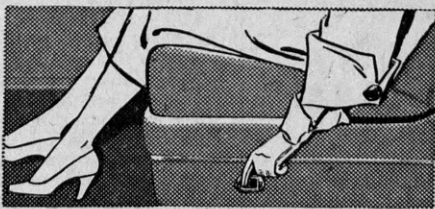
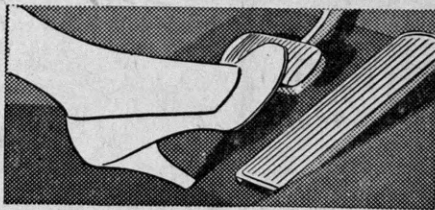
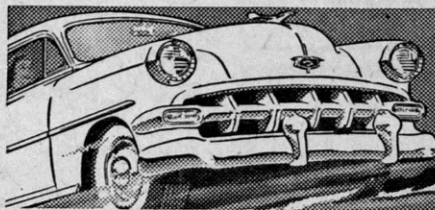
FIRST AUTOMATIC TRANSMISSION*
... most advanced one today

FIRST POWER STEERING*
... lower priced today

FIRST "HARD-TOP" COUPE
... most beautiful one today

FIRST UNITIZED KNEE-ACTION
... only one today

FIRST IN OVER-ALL ECONOMY
... lowest priced line today!



1 NEW HIGH-COMPRESSION POWER

Two more powerful high-compression engines in Chevrolet for '54! Both of these great valve-in-head engines deliver finer, smoother, more quiet performance with important gas savings!

2 NEW POWER BRAKES

You simply swing your foot from accelerator to brake pedal for a smooth, amazingly easy stop. Optional at extra cost on all models equipped with Powerglide automatic transmission.

3 NEW AUTOMATIC SEAT CONTROL

You just touch a button to move the front seat up and forward or down and back! Optional at extra cost on Bel Air and "Two-Ten" models in combination with Automatic Window Controls.

4 NEW AUTOMATIC WINDOW CONTROLS

Touch another button to adjust front windows to suit your liking! Optional at extra cost on Bel Air and "Two-Ten" models in combination with Automatic Seat Control.

*Optional at extra cost.



SEE YOUR CHEVROLET DEALER FOR ALL YOUR AUTOMOTIVE NEEDS!

Conveniently listed under "Automobiles" in your local classified telephone directory