

University of Montana

## ScholarWorks at University of Montana

---

Montana Kaimin, 1898-present

Associated Students of the University of  
Montana (ASUM)

---

10-7-1954

### The Montana Kaimin, October 7, 1954

Associated Students of Montana State University

Follow this and additional works at: <https://scholarworks.umt.edu/studentnewspaper>

**Let us know how access to this document benefits you.**

---

#### Recommended Citation

Associated Students of Montana State University, "The Montana Kaimin, October 7, 1954" (1954).

*Montana Kaimin, 1898-present*. 3021.

<https://scholarworks.umt.edu/studentnewspaper/3021>

This Newspaper is brought to you for free and open access by the Associated Students of the University of Montana (ASUM) at ScholarWorks at University of Montana. It has been accepted for inclusion in Montana Kaimin, 1898-present by an authorized administrator of ScholarWorks at University of Montana. For more information, please contact [scholarworks@mso.umt.edu](mailto:scholarworks@mso.umt.edu).



# Montana Kaimin

Montana State University, Missoula, Montana

Volume LVI Z400

Thursday, October 7, 1954 No. 5

## Dick Jurgens' Band Plays For Dance In F-H Tonight

### Today's Weather—



TODAY'S  
MAXIMUM

Near

70°

The 16-piece Jurgens band will arrive today at noon and will stage a dance in the Field House tonight from 9 p.m. to 1 a.m.

Admission to the dance is \$1. This entitles the ticket holder to either dance or to sit in the south balcony of the Field House and listen to the band. There will be no concert before the dance.

Tickets are on sale in the Student Union and at the Field House ticket office.

#### Jurgens Composer-Engineer

Bandleader Jurgens, besides leading a band, is also a composer, having written such tunes as "Careless" and "Elmer's Tune."

He also wrote his theme song, "Day Dreams Come True at Night." The song was written several years ago while Jurgens was a music student at Sacramento Junior college in California. It was written as a term paper for one of his music courses.

The band is equipped with something that few bands have. Jurgens, whose hobby is radio engineering, has built a recording and public address system that he uses for auditions and study of new arrangements. It is valued at \$7,000.

#### 1 a.m. Hours

Hours for university women have been extended by AWS until 1 a.m. for the dance.

This will be the first time that the huge portable Field House dance floor has been used. According to Robert W. Breen, Field House director, it is the largest in the world.

## ROTC Pay Checks Arrive in October

Summer period Army ROTC pay checks for senior Army ROTC cadets will arrive the middle of October, according to Maj. Charles Ray, Army ROTC department.

The payroll was sent in Thursday and it takes approximately 15 days for the checks to be received. The checks, between \$70 and \$80 in amount, will include all of the summer period except that time spent at summer camp. Pay for that period is paid during the six week camp.

## Navy ROTC Exam Set for December

Applications for the Navy's ninth competitive examination for its ROTC college training program are now available.

The examination is scheduled for December 11, 1954, and all male citizens of the United States between the ages of 17 and 21 are eligible.

Those who can successfully qualify for the Navy's training program may attend the college of their choice, and will take, in addition to the normal college curriculum, a course in Naval science. All tuition, fees and books will be furnished by the Navy.

Application forms and descriptive materials can be obtained from Dr. Severson at the Counseling center, 208 University hall. Nov. 20, 1954, is the deadline for receipt of all applications.

#### FROSH DANCE SATURDAY

Joe Knucky's Serenaders, new freshman orchestra, will play for a freshman dance Saturday night in the Gold room of the Student Union. Dancing will be from 9 to 12. No admission will be charged, but only freshmen are invited.

## Geology Honorary Will Sponsor Field Trip

Sigma Gamma Epsilon, geology honorary, will sponsor a field trip to the Jo Anderson phosphate mine near Garrison Saturday, Oct. 9.

The trip will start at 6:45 a.m. from the Old Science building and all geology majors interested in making the trip may sign up for it on the bulletin board in that building.

The purpose of the trip is to observe surface geology associated with the phosphate deposits.

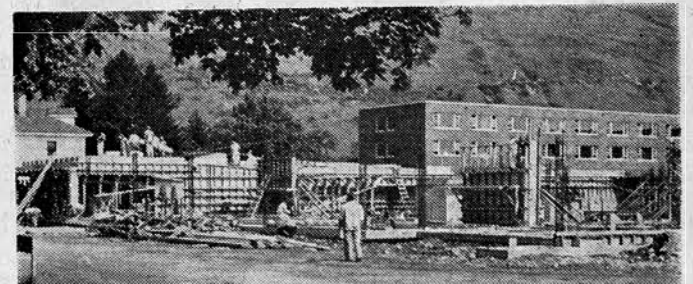
## Errors Corrected On Budget Story

The story entitled "Registration Fees Swell ASMSU Activity Budgets" in yesterday's Kaimin was erroneous in three different places. The column listing the actual amount of money each campus activity will receive was based on the total fall quarter enrollment, or 2,432 students. Actually the 2,432 students are not all activity-fee-paying students. Special and graduate students don't have to pay activity fees.

Secondly, the enrollment usually decreases winter and spring quarters so it is not accurate to expect the entire fall quarter enrollment to pay \$30 for the year on a \$10 per quarter basis.

The third error was caused by a mix up in figures in the estimated amounts of last spring. The estimated budget for the Sentinel was \$1,776, not \$1,188, and for the band \$1,188 not \$7,776. These figures were based on an enrollment of 1800 activity-fee-paying students.

## As It Was and As It Is . . .



Work on the Student Union-Food Commons building has come a long way since last spring when framework was being set up. The upper picture shows early construction work last spring. The lower picture shows the building as it now stands, 75 per cent complete.

## 1954 Homecoming Decorations Call for Originality for Floats

Tuesday night the Alum Homecoming committee, chaired by William F. Campbell, met with Traditions board, and Andy Cogswell, to make final homecoming preparations. They decided that there will be no theme for this year's homecoming, and that floats will be judged on originality.

As in the past years there will be no decorations on lawns, and the living groups will work together on the floats. Two cups will be given for first place, one each to the winning women's group and men's group. Sixteen members from each living group, 32 in all, will march with their float in the parade. It was suggested that those marching dress similarly to the theme of their

float or wear fraternity and sorority jackets.

Since Homecoming is strictly a University affair, sponsored by the Alums, no off-campus group floats may be entered. However, each department and school is asked to enter a float in a competition to be judged separately. A cup will also be given for the best float in this division.

There will be no variety show this year, the group decided, but a pre-game bonfire and rally will be held at the fieldhouse Friday evening. At the rally the members of the teams, coaches, and cheerleaders will be introduced. Traditions board also set Wednesday and Thursday, October 13 and 14, as the days for MSU men

students to vote for Homecoming queen.

After the joint meeting, Traditions board met to draw for the living groups that will work together on the floats. They are: North hall and Sigma Chi; Corbin hall and Phi Delta Theta; Synadelphic and Theta Chi; New hall and Sigma Phi Epsilon; Alpha Phi and Sigma Nu; Delta Gamma and Alpha Tau Omega; Delta Delta Delta, Jumbo, and Craig halls; Kappa Alpha Theta and Sigma Alpha Epsilon; Sigma Kappa and South hall; KKG and PSK.

Traditions Board also announced that cheerleader try-outs will be today at 4 p.m. in the Gold room, for freshmen only. Grizzly Growlers are invited to help cheer.

## Spurs Tap New Member Sunday

Pam Brechbill, Missoula, a music major and concert-mistress of the MSU orchestra, was formally tapped for membership in Tanan of Spur early Sunday morning. Following the tapping at her home, members of the organization held a breakfast in Miss Brechbill's honor. Initiation will be held at the regular Spur meeting Tuesday, Oct. 12.

Miss Brechbill is a member of Alpha Lambda Delta, Mu Phi, 4-H, and frequent violin soloist.

## Today's Meetings

Mortar Board: 12 noon, Eloise Knowles room.

Cheerleaders: 1 p.m., Gold room.

Central Board: 4 p.m., Eloise Knowles room.

Christian Science organization: 6:30, LA 102.

## Expect New Union Building To Be Finished Early '55

Noises coming from the lot adjacent to the health center have changed their tune drastically since last winter when it was the site of the music practice building. Present noises of hammers, drills, and saws indicate the near-completion of the new \$600,000 Student Union-Food Commons building.

The building is 75 per cent complete, according to the contractors, Hightower and Lubrecht construction company. If progress continues on schedule, as it has been, hopes are that the food service portion will be finished the first of January and that the union part will be finished soon afterward. Work started April 1.

#### Tile Work Progressing

The outside of the building is getting a finished look, with the

roofing nearly completed, the specially-treated Tim Deck orange cedar siding on the upper level and masonry on the lower level. Sidewalks are being laid. Glass has already been installed in portions of the building. Inside, certain tile work is entirely laid. Next week quarry tile will be laid. In the kitchen area there will be both a tile and brick floor.

#### Room for Varied Activities

The modern, "half-level" structure is designed in such a way as to provide five floors, even though it is only two stories high. In the basement will be a game room 80 by 40 feet. A lounge as large as the game room will extend along University avenue on the ground floor level. In this area are an open check room, the manager's office and an information desk. The coke store, with a 20-foot stone fireplace, opens from the lounge and is a half-level below it. On the two levels of the second floor will be student offices, meeting rooms, a browsing room, and a room for dining and dancing. The space can be divided into three private dining and meeting rooms by use of sliding doors.

Kitchen facilities are about twice the size of the game room facilities and are on the lower floor of the food service portion of the building. Also on this floor will be storage space and offices for dieticians. A dining area 120 by 80 feet, large enough to handle the food service for all residence halls, is on the top floor.

Contractors on the job besides Hightower and Lubrecht are Lemke Plumbing company and the Walford Electric company.

## Bear Paw Fish Bowl Set For Friday Evening

The Bear Paws will hold their first fish bowl in the copper room of the Student Union Friday night from 9-12. This was decided at the first Bear Paw meeting of the year in the Eloise Knowles room last night.

The sophomore service honorary also decided to conduct a vigorous campaign to keep students from cutting across the oval, according to Lee Bayley, outgoing Chief Grizzly for the organization.

## LITTLE MAN ON CAMPUS BY DICK BIBLER



"I'm afraid Worthal has flunked his final."



## Foresters Overrun Oval-Survey Pond

If you've been wondering who the people are that have been running all over the MSU oval with little painted sticks these autumn afternoons, it's Instructor Louis Powell's sophomore forestry surveying class.

Forestry surveying classes, which are held during fall and spring quarters, use the oval, along with Pattee canyon and the little league baseball diamond near the strip houses, for instructional purposes.

At last report, neither the oval nor the imaginary pond in the middle of it has moved an inch.

### SPECIAL

A \$10 All-Metal typewriter stand for only 1.00 with the purchase of a portable typewriter.

## Smith-Corona PORTABLE



## BIG MACHINE PERFORMANCE!

★ It's the Silent-Super—with Keyset Tabulator! The world's first, fastest and most complete portable typewriter. It will give years of trouble-free service. Easy to buy. See it demonstrated.

The Office Supply Co.  
115-119 West Broadway  
Phone 4-4281

## 'bout the Size of It

Freshmen women majoring and minoring in physical education, including those in physical therapy, will meet today at 4:10 p.m. in room 107 of the Women's Center. The meeting is under the direction of Miss Agnes Stoodley, Health and Physical Education department.

### NATIONAL PHARMACY WEEK

National Pharmacy Week, Oct. 3-9, 1954, is now being observed by the American Pharmaceutical association. The theme is "Your Pharmacist Works for Better Community Health." A national effort is being made by this profession to focus attention of the public on the need for better health care, more frequent medical examinations and to point out the continuing health services of the modern pharmacy.

### Orr Announces Opening Of Student Pharmacy

Dr. J. E. Orr, dean of the pharmacy school, has announced the reopening of the school pharmacy, with special rates to University students.

The store, located in room 104 of the Chemistry - Pharmacy building, is operated by fifth-year pharmacy students under the supervision of staff members.

Orr said that 1700 new prescriptions and 300 refills were dispensed from the store during the last school year.

The store will be open from 11 a.m. until noon and from 1 p.m. to 3 p.m. Monday through Friday. Only students and their families are eligible to use the facilities.

## LITTLE MAN ON CAMPUS BY DICK BIBLER



"My date was polite, considerate and intellectual—but I'm glad to see that someone had a good time."

### Today's CB Slate

Set up of Student Union committee.

Foreign student program.

Honor system.

Homecoming and Traditions board report.

Budget-Finance report.

Social committee report.

### Phi Kappa Phi Chapter To Be Installed at MSU

A chapter of Phi Kappa Phi, national honor society, will be installed at Montana State University Oct. 18, according to Dr. Roy J. W. Ely, economics department chairman.

Ely said MSU was granted a charter after 26 University faculty members petitioned the national group last March for the establishment of a campus chapter.

Phi Kappa Phi was established in 1897, and there are now 64 active chapters at the nations' major colleges.

### Classified Ads . . .

FOUND: Dark plastic framed glasses in brown case at First National Bank. Inquire at Kaimin office.

FOR PRIVATE STUDY: Foreign languages, see W. P. Clark at 310 McLeod or Jumbo Hall E 314. Phone 2-2949. 6c

FOUND: One pair brown gloves, left in 203, J-school. Inquire J-school library.

FOR SALE: Tuxedo, medium size, perfect condition. \$15. Call 4-4996 on Saturday. 6c

## Five New Appointees Chosen for 'Law Review'

Daniel Boos, editor of the "Law Review," yesterday announced the names of five new appointees to the publication board.

The "Law Review" is a yearly publication edited by MSU students and serves as a medium for discussion of current law problems of interest to both students and attorneys.

The new appointees, chosen for their high scholastic standing, include Larry Gaughan and Leonard Zipperian, Missoula; John Potter, White Sulphur Springs; Jim Robischon, Kalispell, and Bob Emmons, Anaconda.

### GLASSES FITTED... ALL OPTICAL REPAIRS

DR. L. R. BARNETT  
DR. D. R. BARNETT  
DR. Wm. BARNETT  
Optometrists

129 EAST BROADWAY  
MISSOULA, MONTANA

## OUR SPECIALIZED SERVICE will save you MONEY

- Motor Tuneup
- Carburetors
- Ignition
- Starting Motors
- Generators and Regulators
- Speedometers
- Magnetos

### Auto Electric Service

218 East Main — Phone 4-4716

## 93 Stop and Go

South on Highway 93

The place to go for that snack  
after the  
**DICK JURGENS**  
dance  
The Best Costs  
No More!



## BOWLING

Meet Your  
Friends at  
the

**Liberty Bowling Center**  
241 East Main

### Before the Jurgens Dance Tonight



It's . . .

at the  
**MONTMARTRE CAFE**

IN THE MISSOULA HOTEL  
All you can eat for \$1.25

## The Montana KAIMIN

Established 1898

The name Kaimin (pronounced Kimeen) is derived from the original Salish Indian word and means "something written" or a "message".

Published every Tuesday, Wednesday, Thursday, and Friday of the college year by the Associated Students of Montana State University. Represented for national advertising by National Advertising Service, New York, Chicago, Boston, Los Angeles, San Francisco. Entered as second-class matter at Missoula, Montana, under Act of Congress, March 3, 1879. Subscription rate \$3.00 per year.

Printed by the University Press

Member,  
Montana State Press Association  
Member, Rocky Mountain  
Intercollegiate Press Association

Editor, Bob Newlin; Business Manager, Joan Brooks; News Editor, Ed Stenson; Campus Editor, Kim Forman; Society Editor, Pat O'Hare; Sports Editor, Art Madsen; Photographer, Hoover Ogata; Circulation, Richard Spaulding; Faculty Advisor, E. B. Dugan.

YOU ARE ALWAYS  
WELCOME AT THE

**Western Montana  
National Bank**

"FRIENDLY SERVICE  
SINCE 1889"

New  
**Lassie Jr.  
and  
Lassie Maid  
COATS**

as advertised  
in leading  
fashion magazines

Tweed  
Alpaca  
Chinchilla  
Veldora  
Levmoor

Priced from \$49.95

at

**Cummins**  
STORE FOR WOMEN

a new Sterling  
pattern for  
romantic young  
moderns . . .



\$29.75

INC. FED. TAX  
six pc. place setting

in  
**WALLACE  
STERLING**

See Wishing Star now at

B & H Jewelry Co.  
140 No. Higgins Ave.



# More Angles Than One To MSU Cubs

By GENELL JACKSON

Four Cubs, all ends, went on the list of the injured during scrimmages Tuesday afternoon, but all are expected to recuperate in time for their next game.

Oddly enough, two of the injured players hail from Elmhurst, Ill.—Ron Broker and Fred Kraepelin. The other two, Bob Palin and Forrest Hirst, were Montana Class B prep stars, playing at Valier and Polson respectively.

Freshman coach Bob Byrne pointed out several other interesting items today. For example, Don Williamson, Butte and Ron Johnson, Elmhurst, Ill., are two of the best kickers to come to MSU in recent years. "In fact I believe that by next year, they will surpass everyone on the present varsity in this department," he asserted.

Hal Erickson, who was an all-state football and basketball

player at Sioux Falls, S. D., last season, has never played in a losing football game. His high school team won 34 consecutive games. His coach there was named Robert Burns and his first MSU mentor is Robert Byrne.

The Cubs have a tackle who weighed nearly 300 pounds when he was 14 years old. But now he is down to 207, and has been cited by Byrne as one of the outstanding frosh linemen. He is Mike Barone from Elizabeth, N. J., a brother of Vince, junior letterman tackle of last season, who is now in the service.

Harry Freebourn, a former Butte Central griddier, had his jaw broken in three places during the East-West Shrine game in Great Falls this summer. Despite this, he was one of the first freshmen to report for football at MSU this fall.

"Another unusual thing about this team," Byrne pointed out, "is that they are all single." This will be changed Saturday, however, when John Paladichuk, a Sidney all-state football and basketball star, marries a home town girl.

KAIMIN WANT ADS PAY

## MSU Homecomers Will Recall Eso, A Gridiron Great

By BILL LARCOMBE

Homecoming is little more than a week away, and wherever alumni gather during the festive occasion, chances are that conversation will turn to football and the feats of Grizzly athletes who performed on the gridiron.

One Grizzly who will no doubt be spoken of is Eso Naranche, who played on Doug Fessenden's 1939-40-41 elevens.

Naranche played his high school football for Butte Public, and came to the University in 1938 as an all-state fullback. He played a lot of ball as a substitute fullback during his sophomore year and moved into the number one spot during his junior and senior years.

"Naranche was a fine fullback, a credit to his hometown, the University, and the state," says



ESO NARANACHE was a fine fullback, a credit to the University and the state.

"Jiggs" Dahlberg, MSU athletic director, in recalling the activity of the Butte lad. "We wish we had fellows like Eso playing for us every year."

During his junior year, Naranche injured his knee and wasn't in top form that season, but he came back in sound shape his senior year to score his greatest successes.

On January 1, 1942, Naranche played for the West in the East-West Shrine game in San Francisco, and was a standout performer for his team. Following graduation, Naranche entered the service and was killed in action in July, 1943.

It is in his memory that Butte high school dedicated its Naranche stadium.

## Administration Tops in Bowling

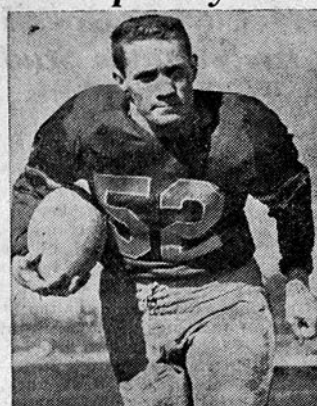
The Administration team emerged from Tuesday night bowling as the only undefeated faculty league team by taking three games from the Air Science leggers.

The Chemistry-Pharmacy team turned in the high series with 2317 pins and also won the high team game with 789.

R. A. Diettert of the Natural Science team, bowled a high 555 series and Leland Yates, Chemistry-Pharmacy won the high individual series with 208.

The standings are: Administration won 6, lost 0; Physical Education won 3, lost 3; Journalism won 3, lost 3; Chemistry-Pharmacy won 3, lost 3; Natural Science won 3, lost 3; Business Ad won 2, lost 4; and Forestry won 0, lost 6.

## He Tops Skyline



Fred Tesone, 170-pound Denver university halfback and the Skyline's leading ball carrier, ranks sixth in the nation in rushing. Tesone, who will spearhead Denver's attack against the Grizzlies Friday night, has gained 256 yards in 39 carries.

## Fans to See Cubs In Intra-Squad Game Friday


Football fans will be able to see the MSU Cubs, who have been acclaimed the best freshman squad in years, in action this Friday.

The Silvers and Maroons will meet in an intra-squad contest on Dornblaser field at 4 p.m. and all students are invited to the game. As the Cubs have no home games this season, this will be the only opportunity to see the frosh play.

Their next and final contest will be played Nov. 12 at Moscow, Ida., when they meet the highly-rated University of Idaho freshmen. "They have a new coach, a new system and one of the best freshman teams in years," Byrne said. "I'm a bit worried, but then we have a month and five days to prepare for them," he added.

The Cubs will scrimmage against the Grizzlies the first part of next week. "They are looking forward to meeting their 'big brothers' on the field, and it should be an interesting session," Byrne commented.

**WHISTLE STOP**  
South on Hiway 93  
Hamburgers Malts  
French Fries Toast-tites

THURS.-FRI.-SAT.  
  
**THE LIVING DESERT**  
Disney's "BEN AND ME"  
**THE CAMPUS**  
South Higgins Students 50c

Chicken in the Ruff  
**\$1.00**  
Chicken to Go  
**\$1.00**  
**THE SHACK**  
Phone 9-9903 West Front  
STEAKS - BEVERAGES  
SANDWICHES

Featuring . . .  
**ARROW**  
★ Sportswear  
★ Dress Shirts  
★ Underwear  
★ Handkerchiefs  
★ Ties  
at  
**Yandt's**  
MEN'S WEAR  
The Store for Men and Women Who Buy for Men

For Your School Needs  
**SEE US!**  
Typewriter Service & Supply  
314 North Higgins

  
**A SPECIAL DEAL FOR UNIVERSITY STUDENTS\***  
\*One copy of this "ad" is worth \$1.00 on any lube job or wash job during the week of Sept. 6-13.  
**GORDON'S 66 SERVICE**  
631 So. Higgins Phone 9-9923

Fellas! Why Not Bring the Gals  
out for a snack after the Dick Jurgens dance?  
**FAIRWAY DRIVE-IN**  
Home of the Basketburger  
7 a.m. to 1 a.m. weekdays Vince and Freda Farnum  
Saturdays 'til 3 a.m. South on Highway 93

Enjoy Missoula's Indian Summer!  
  
If you're looking for autumn picnic supplies, Olson's Grocery is the place to go.  
— OPEN —  
Evenings, Sundays, Holidays  
**OLSON'S GROCERY**  
South Higgins

JUST RECEIVED . . .  
Shipments of Cocktail and Formal Gowns  
**\$18.75 to 29.75**  
Lillian J. English  
APPAREL  
317 N. Pattee  
Next to the Library



## Color + collar + comfort = The right ARROW Shirt for you!

You don't have to be a math major to figure it out. Arrow shirts offer you so many fine colors and patterns in your favorite collars, that it's a breeze to have plenty of style in your wardrobe.

Shown above are, the Sussex button-down in a neat tattersol check, and the smooth Radnor "E" in solid colors. Both \$5.00. The goodlooking Arrow Sussex in a well-bred stripe, \$4.50. They're comfortable, "correct"-thrifty too.

**ARROW SHIRTS & TIES**  
UNDERWEAR • HANDKERCHIEFS • CASUAL WEAR



### Million Trees, Shrubs Prepared By Nursery

One million trees and shrubs, more than double last year's total, will be made available to Montana's farmers and ranchers next spring by the state forest nursery, located here on the campus.

Last spring 400,000 plants were sent throughout the state to be used for windbreaks and reforestation purposes by the nursery as a part of a new state-wide tree planting program, according to Don Baldwin, nurseryman and forest supervisor.

### BUILDINGS PROGRESSING, SLATED FOR NEXT QUARTER

The annexation to Craig hall and the new Student Union building are progressing according to schedule, according to T. G. Swearingen, maintenance engineer. Tentative plans are to have the buildings ready for use next quarter.

For the Best in Radio

**KGVO-CBS**

1290 on your dial

Montana's Most Powerful TV Station

**KGVO-TV**

Channel 13; 4 p.m. to 10 p.m.

For Your Future Home, Plan Now for

**FAR VIEWS HOMESITES**

OFFICES

Radio Central Building

127 E. Main

**MOSBY'S, INC.**

OWNERS

## McCarthy Goes Modern at MSU, Investigates Students "A la-Kinsey"

By TOM MCCARTHY

In recent years Indiana University, through its remarkable Dr. Kinsey, has offered the means for finding the ultimate truth in any psychological or social field.

Kinsey's probe into the mating habits of humans offers an understanding that has never before been approached. And he did it by merely asking questions.

Dr. Kinsey discovered his truths by asking questions of 20 thousand persons out of the approximately 160 million in the United States. Therefore, using the same ratio and asking questions of 1/8000 of the people, the nature of Montana State University could be examined.

This I did. But just to be fair I talked with five sets of three persons each.

### Student Origin

My first question, asked in the Student Union cafeteria at noon, concerned the origin of the stu-

dents. I asked, "Where do you live?" The results were amazing.

Two of them were from Butte, and the third, a freshman, was from Kappa Alpha Theta.

The next three persons interviewed were playing cards in Jumbo Hall. I asked their ages. The first was 47, the second 84, the third was 18. Astounding.

Desiring to obtain broad results, I called on the sorority houses to determine the female opinion. My first question was, "What is your occupation?" All were students.

### New Study

I then asked the girls what they were studying. The first was enrolled in the music school, the second in the forestry school, and the third said something about a football coach.

Still searching for facts, I entered the Liberal Arts building. I asked the first three people why they chose MSU.

Two persons were lost and the third was a football scout from Iowa.

I then asked "What interests you most during your spare time?" One said, "Men." One said "Women." One said, "Studying."

### Janitors Join Ranks

I next moved to Main hall to ask, "What year are you in school?" Disregarding the first reply which was, "None of your d--- business!" I discovered that the first was a junior, the second a senior, and the third a janitor.

The completion of research shows that this is a remarkable school in that our student body is made up of 66% Butte residents and 34% Kappa Alpha Theta residents who are 43 years of age. Also, I find that every one of us is a student.

Further, I find that the state is wasting much of its money supporting a college of education, business, pharmacy and art.

Why should MSU have these schools when everyone here is studying music, football coaches,

## Chamberlain Receives Full Pilot Rating

Karl Chamberlain, Missoula, flew the required 40 hours for his private pilot license this summer, making the fifth full-fledged pilot for MSU's Flying club. Faith Kreider, Sand Springs, only girl member, also soloed this summer.

The first meeting of the Flying club will be an open house Wednesday night at 7:30 in the ROTC building, according to Joe Jenkins, president.

or trees. And, in two years there won't be any junior or senior classes—only janitors.

So there are the compilations of a great deal of research. The results aren't as interesting as Kinsey's, but then compare topics.

## For Fast Service

It's

**CITY CLEANERS**

In Plant By Noon

Ready at 4

or Delivered at 6

610-12 SOUTH HIGGINS

## Can't Dance? Learn Now!

Special classes for college students starting Tuesday, Oct. 5, at 8:30 p.m. and Thursday, Oct. 14 at 7:30 p.m. Only \$1.25 per lesson; minimum 5% per month paid in advance. LEARN TO WALTZ, FOX TROT, RUMBA, SAMBA, TANGO, MAMBO AND JITTERBUG.

ENROLL NOW AT . . .

**Jean's School of Dancing**

Phone 3-3929

or contact Bob Lawrence at 4-4058

## STEP Lightly



### Cush-N-Crepe Soles

Smartly designed long-wearing, soft, pliable leather uppers. You'll like the unusual comfort you get from these light-as-air, wedge-type, CUSH-N-CREPE soles with natural, walking-height heel. Built with the famous Red Wing sweat-proof insole . . . won't crack . . . won't curl . . . absorbs perspiration like a blotter. Want a real comfort treat and added wear?

Come in, try on a pair today. They're TOPS!

*Dragstedt's*

## RENTALS!

- ADDING MACHINES
- TYPEWRITERS

Call 9-8995

For Delivery



**The BUSINESS MACHINES Co.**  
OFFICE & STORE EQUIPMENT  
MISSOULA, MONTANA

225 E. Broadway

# Here's That Band Again!

# DICK JURGENS

and His 16-Piece  
Nationally  
Famous  
Band



October 7

# TONITE

# MSU Field House

## Sweet-Swing-Novelties

The best in dance music from one of the country's outstanding bands on the new dance floor.

Admission

**\$1.00**  
per person

Dancing from  
9 p.m. to 1 a.m.

**GIRLS HAVE  
LATE PERMIT**

Composer of — "One Dozen  
Roses," "Careless," "Elmer's  
Tune," "If I Knew Then," "A  
Million Dreams Ago"

152 weeks at the Hotel Claremont  
13 weeks Coca-Cola Spotlight Review  
8 weeks Hollywood Palladium  
42 weeks in Chicago